



SPARE PARTS LIST

EARLY ENTRY SAWS

SOFF CUT 2500, 2015-06

Go to Discount-Equipment.com to order your parts



PARTS FINDER

**Search Website
by Part Number**



**Search Manual
Library For Parts
Manual & Lookup Part
Numbers – Purchase
or Request Quote**

Search Manuals

Enter your information to help us find the right parts manual for your machine.

* Brand:

* Model:

* Serial:

* Part Number:

SEARCH

**Can't Find Part or
Manual? Request Help
by Manufacturer,
Model & Description**

Parts Order Form

Please fill in the following information to help us find the right part for your machine.

Manufacturer:	<input type="text"/>
Model:	<input type="text"/>
Description:	<input type="text"/>
Part Number:	<input type="text"/>
Quantity:	<input type="text"/>
Notes:	<input type="text"/>

Discount-Equipment.com is your online resource for quality parts & equipment.

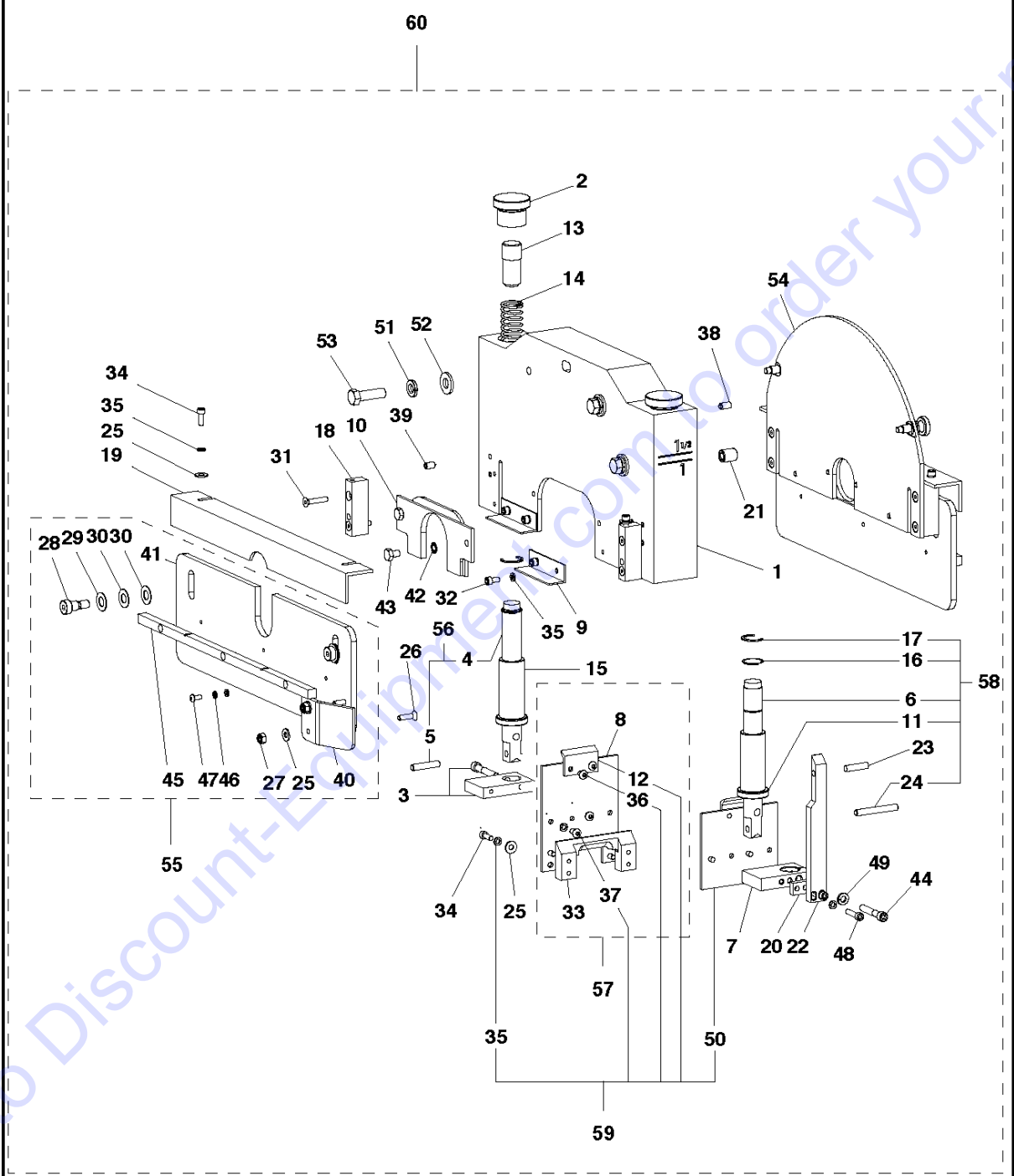
Florida: **561-964-4949** Outside Florida TOLL FREE: **877-690-3101**

Need parts?

Click on this link: <http://www.discount-equipment.com/category/5443-parts/> and choose one of the options to help get the right parts and equipment you are looking for. Please have the machine model and serial number available in order to help us get you the correct parts. If you don't find the part on the website or on one of the online manuals, please fill out the request form and one of our experienced staff members will get back to you with a quote for the right part that your machine needs.

We sell worldwide for the brands: Genie, Terex, JLG, MultiQuip, Mikasa, Essick, Whiteman, Mayco, Toro Stone, Diamond Products, Generac Magnum, Airman, Haulotte, Barreto, Power Blanket, Nifty Lift, Atlas Copco, Chicago Pneumatic, Allmand, Miller Curber, Skyjack, Lull, Skytrak, Tsurumi, Husquvarna Target, Stow, Wacker, Sakai, Mi-T-M, Sullair, Basic, Dynapac, MBW, Weber, Bartell, Bennar Newman, Haulotte, Ditch Runner, Menegotti, Morrison, Contec, Buddy, Crown, Edco, Wyco, Bomag, Laymor, EZ Trench, Bil-Jax, F.S. Curtis, Gehl Pavers, Heli, Honda, ICS/PowerGrit, IHI, Partner, Imer, Clipper, MMD, Koshin, Rice, CH&E, General Equipment, Amida, Coleman, NAC, Gradall, Square Shooter, Kent, Stanley, Tamco, Toku, Hatz, Kohler, Robin, Wisconsin, Northrock, Oztec, Toker TK, Rol-Air, APT, Wylie, Ingersoll Rand / Doosan, Innovatech, Con X, Ammann, Mecalac, Makinex, Smith Surface Prep, Small Line, Wanco, Yanmar

L SOFF CUT X2500
BLADE BLOCK ASSEMBLY

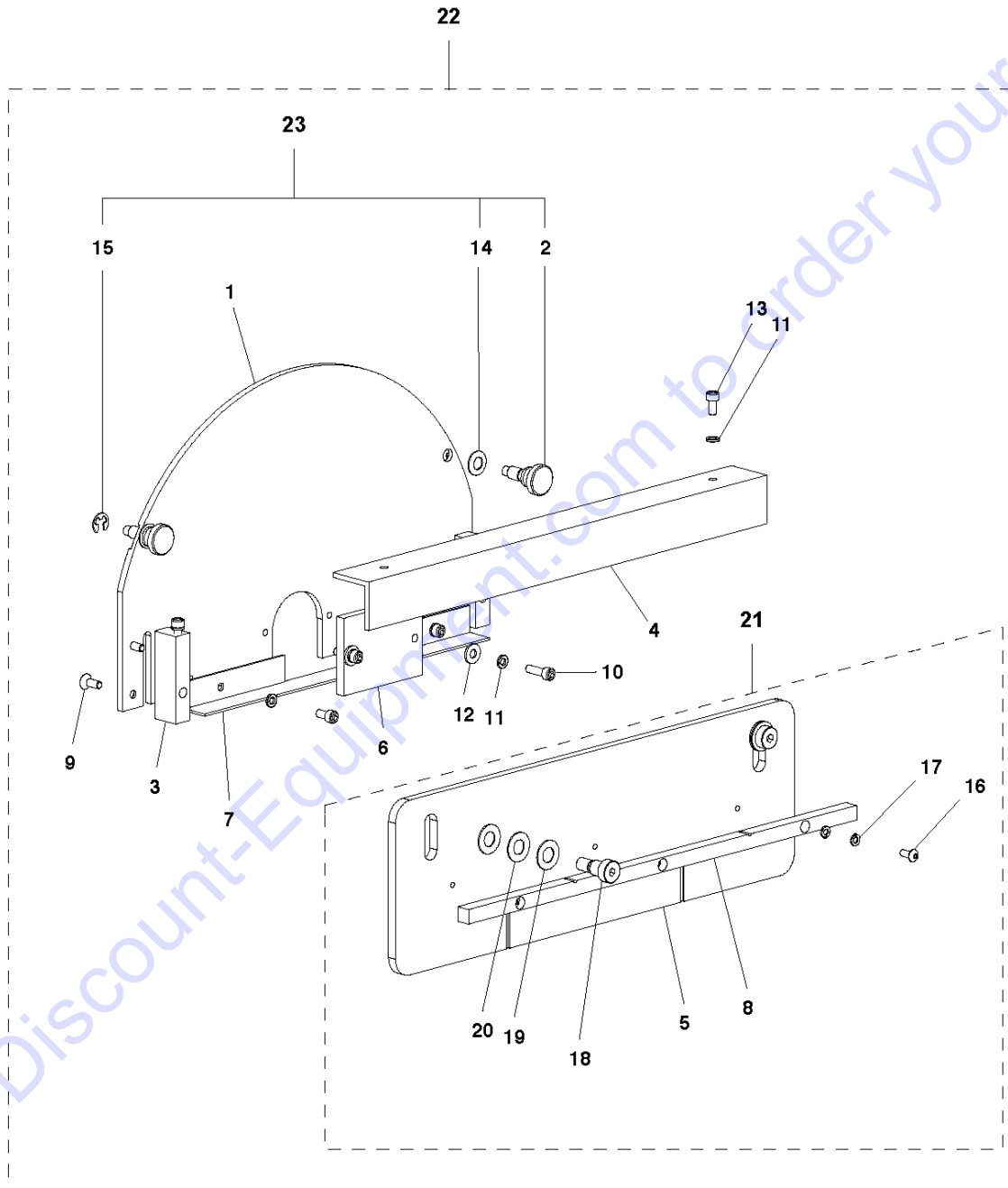


BLADE BLOCK

SOFF CUT 2500, 2015-06

Ref	Part No	Description	Remark	QTY KIT
1	505 70 90-01	BLOCK. BLADE		1
2	505 70 92-01	KNOB		2
3	505 87 43-01	G1/G2/G8 FRONT ROD CLAMP		1
4	505 70 94-01	ROD. BLADE BLOCK (FRONT)		1
5	505 77 40-01	PRECISION DOW PIN 1/4 X 1 1/4		1
6	505 70 93-01	ROD. BLADE BLOCK (REAR)		1
7	505 87 93-01	G2000 REAR ROD CLAMP		1
8	505 70 98-01	DIVERTER. PLT FRNT/CHGE NXT PO		1
9	505 71 17-01	ANGLE DIVERTER (INNER)SMALL		2
10	505 71 82-01	INSERT		1
11	505 73 80-01	SEAL DUST		2
12	505 71 40-01	BATTERY SUPPORT PLATE		2
13	505 70 95-01	ROD. SPRING GUIDE B.B.		2
14	505 73 72-01	SPRING		2
15	505 66 76-01	G2000 3/4 X 1 X 2 3/8 BUSHING		2
16	505 74 84-01	SPIRAL RETAINING RING		2
17	505 73 36-01	SNAP RING		2
18	505 71 02-01	BLOCK DIVERTER MTG (INNER)		2
19	505 71 06-01	ANGLE BRACKET		1
20	505 76 07-01	DEPTH POINTER SPACER		1
21	505 74 83-01	THREADED INSERT S.S.		2
22	505 60 14-01	DEPTH GAUGE ARM		1
23	505 78 79-01	1/4 X 1 MAGNET		1
24	505 77 54-01	SNAPPER PIN 1/4 X 2 1/2		1
25	505 63 53-01	FLAT WASH #10 S.S		8
26	505 77 29-01	FHC 10-24 X 3/4 SS		2
27	505 63 04-01	NYLOC NUT #10-24 CAD.PL.		2
28	505 72 61-01	SHSB 3/8 X 3/8 BLK STL		2
29	505 63 42-01	FLAT WSHR.750 X .375 X .031 SS		2
30	505 63 45-01	FLAT WSHR .750X.379 X.031 DEL		4
31	505 73 00-01	FHS 10-32-1 S.S.		4
32	505 62 77-01	SHC 10-32-3/8 S.S. NF		4
33	505 71 03-01	DIVERTER BLOCK (FRONT) G2&G1 N		1
34	505 72 96-01	SHC 10-32 X 1/2 S.S. CBL MTS		6
35	505 63 31-01	LK WASH #10 SPLIT SS		16
36	505 62 95-01	BHS 10-32-1/4 S.S.		4
37	505 62 91-01	BHS 10-32-3/8 S.S.		4
38	505 63 00-01	FULL DOG SET SCREW S.S.1/4-20		2
39	505 73 41-01	ST.SCRW BLK CONE PT 1/4-20X1/2		4
40	505 76 15-01	LEXAN SHIELD DIVERTER-THICKER		1
41	505 71 00-01	DIVERTER. INNER (LEXAN)		1
42	505 73 18-01	LK WASH 1/4 EXT TOOTH		2
43	505 62 73-01	HEX BOLT 1/4-20-3/8 S.S.		2
44	505 72 88-01	SHC 1/4-20-1 1/2 S.S.		2
45	505 71 88-01	STIFFENER. LEXAN PNL		1
46	505 63 27-01	LK WASH #8 SPLIT S.S.		6
47	505 62 93-01	BHS 8-32-3/8 S.S.		3
48	505 77 28-01	SHC 10-32 X 7/8 SS		2
49	505 63 28-01	LK WASH 1/4 SPLIT SS		1
50	505 67 31-01	DIVERTER. PLATE (REAR)		1
51	505 73 10-01	LK WASH 3/8 SPLIT SS		3
52	510 30 10-01	WASHER		3
53	505 72 76-01	HEX BOLT 3/8-16X1 1/4 CAD GR 5		3
54	505 85 76-01	BLADE BLOCK COVER FOR G2000		1
55	505 88 27-01	X2500 INNER LEXAN		1
56	505 87 91-01	G2000 FRNT BLD BLK SHAFT		1
57	505 87 95-01	G2000 FRNT DIVERTER PLT ASSMBL		1
58	505 87 90-01	G2000 REAR BLD BLK SHAFT		1
59	505 87 94-01	G2000 REAR DIVRTOR PLT ASSMBLY		1
60	510 27 21-05	ASSEMBLY		1

M SOFF CUT X2500
BLADE BLOCK COVER



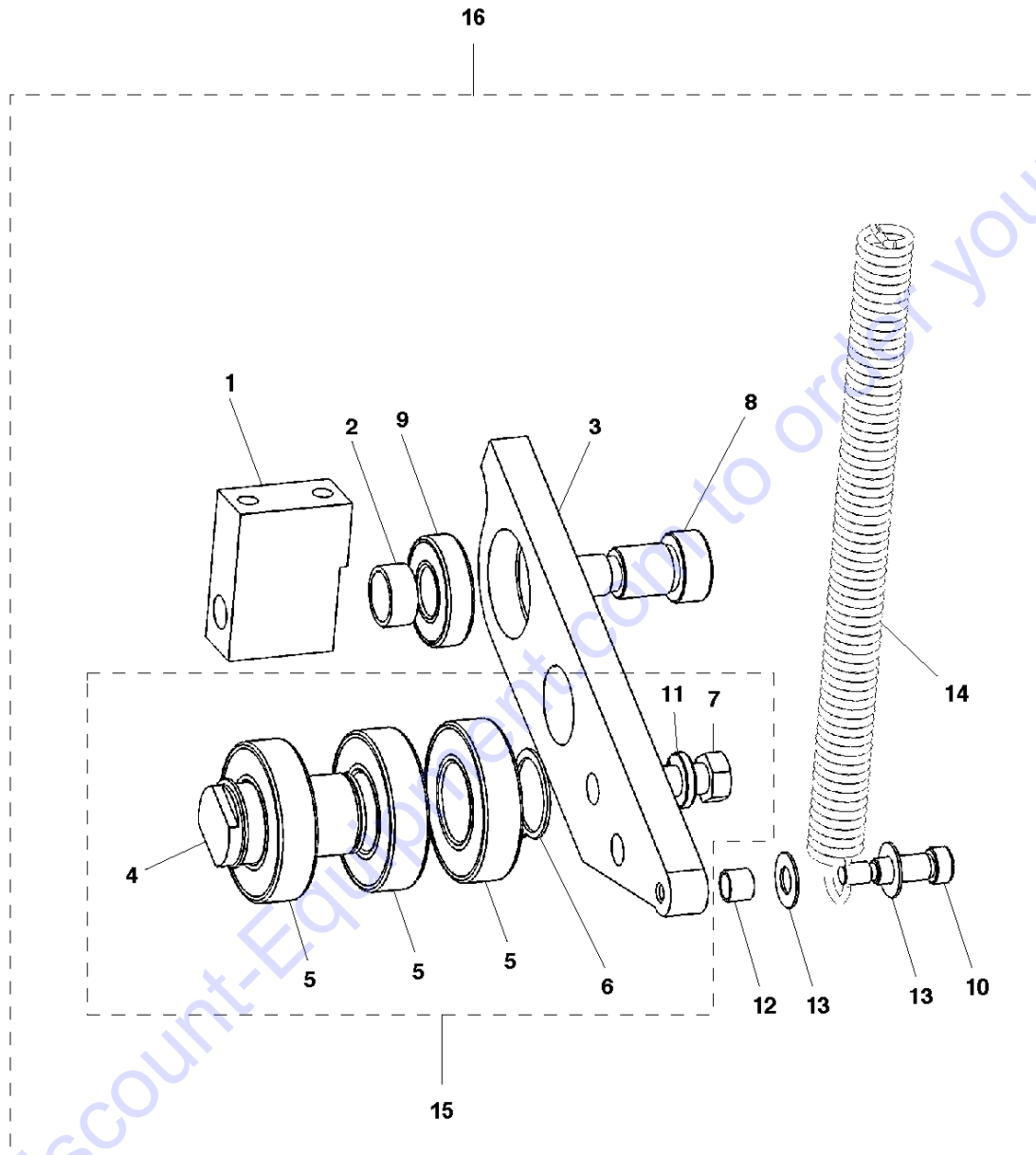
BLADE BLOCK COVER

SOFF CUT 2500, 2015-06

Ref	Part No	Description	Remark	QTY	KIT
1	505 70 91-01	COVER		1	22
2	505 53 63-01	KNOB		2	22
3	505 71 01-01	BLOCK DIVERTER MTG (OUTER)		2	22
4	505 71 05-01	ANGLE BRACKET		1	22
5	505 70 99-01	DIVERTER. OUTER (LEXAN)		1	21,22
6	505 72 11-01	EXTENSION PLATE/BLADE COVER		1	21,22
7	505 71 16-01	AGL DVTR BLD CVR NOTCHED		1	22
8	505 71 88-01	STIFFENER. LEXAN PNL		1	21,22
9	505 72 99-01	FHS 10-32-1/2 S.S.		4	22
10	505 72 97-01	SHC 10-32 X 5/8 S.S.		2	22
11	505 63 31-01	LK WASH #10 SPLIT SS		6	22
12	505 63 53-01	FLAT WASH #10 S.S		2	22
13	505 62 77-01	SHC 10-32-3/8 S.S. NF		4	22
14	505 53 64-01	WASHER		2	22
15	505 53 65-01	E-CLIP		2	22
16	505 62 93-01	BHS 8-32-3/8 S.S.		3	21,22
17	505 63 27-01	LK WASH #8 SPLIT S.S.		6	21,22
18	505 72 61-01	SHSB 3/8 X 3/8 BLK STL		2	21,22
19	505 63 42-01	FLAT WSHR.750 X .375 X .031 SS		2	21,22
20	505 63 45-01	FLAT WSHR .750X.379 X.031 DEL		4	21,22
21	505 87 96-01	G2000 OUTER LEXAN		1	22
22	505 85 76-01	BLADE BLOCK COVER FOR G2000		1	
23	505 48 29-01	KNOB		1	22

Go to Discount-Equipment.com to order your parts

D SOFF CUT X2500
BLADE IDLER PULLEY



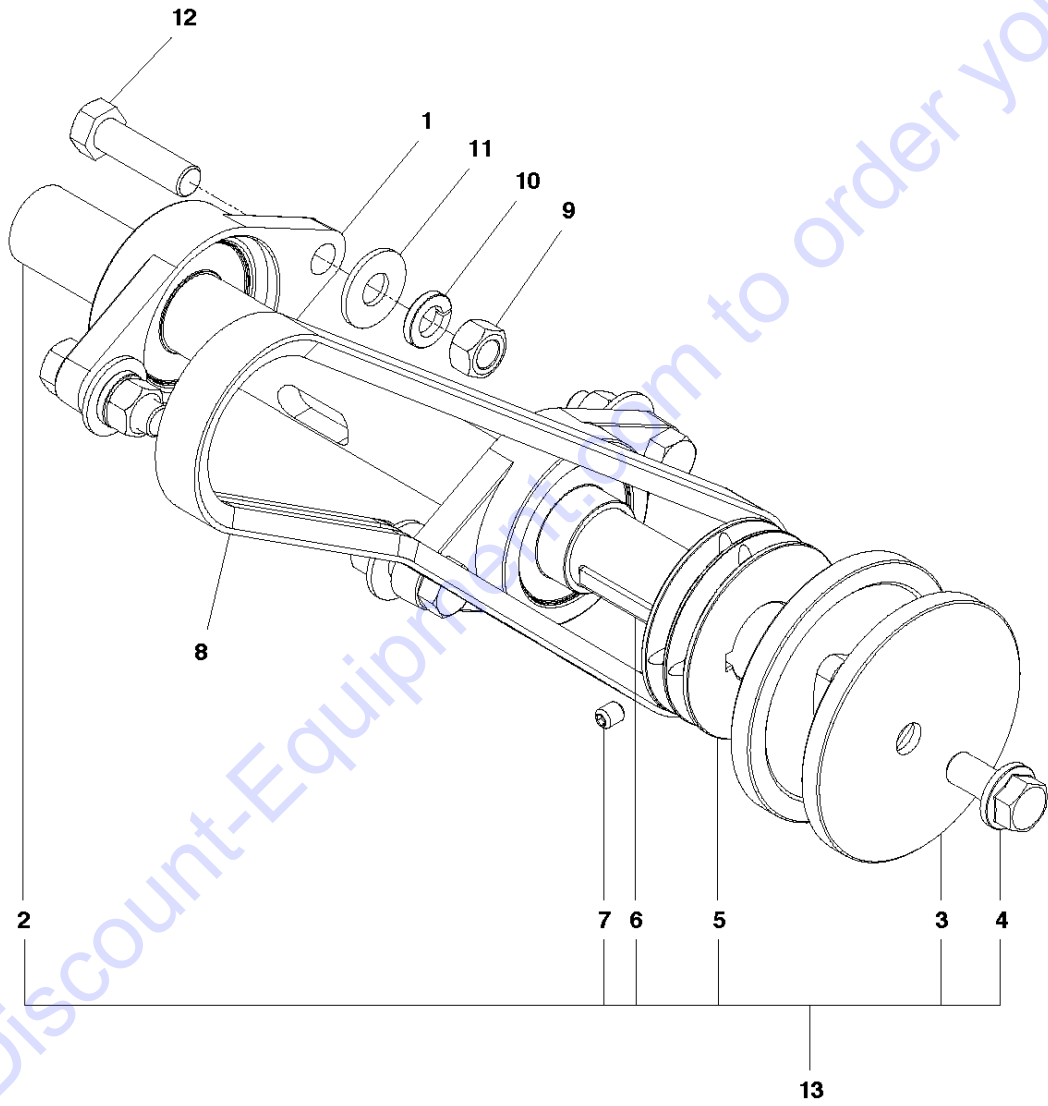
BLADE IDLER PULLEY

SOFF CUT 2500, 2015-06

Ref	Part No	Description	Remark	QTY KIT
1	505 71 48-01	MTG BLOCK - BLADE IDLER PULLEY		1
2	505 71 46-02	SPACER		1
3	505 70 69-01	PUMP ARM IDLER PULLEY		1
4	505 70 68-01	SHAFT. BLADE BELT TENSIONER (P		1
5	505 73 63-01	10"WHEEL/ BLK SEAL SINLE LIP		3
6	542 20 62-05	SNAP RING		2
7	539 97 69-41	SCREW		1
8	505 72 62-01	SHSB 5/8 X 3/4 BLK STL		1
9	505 73 60-01	IDLER PULLEYS BLK SEAL SGL LIP		1
10	505 72 64-01	SHSB 5/16 X 3/4 BLK STL		1
11	505 73 10-01	LK WASH 3/8 SPLIT SS		1
12	505 71 79-01	BUSHING.G.A.(.315 SPACER)		1
13	505 72 52-01	WASHER		2
14	505 73 73-01	SPRING		1
15	505 48 34-01	PULLEY		1
16	510 27 17-05	ASSEMBLY		1

Go to Discount-Equipment.com to order your parts

F SOFF CUT X2500
BLADE SHAFT ASSEMBLY



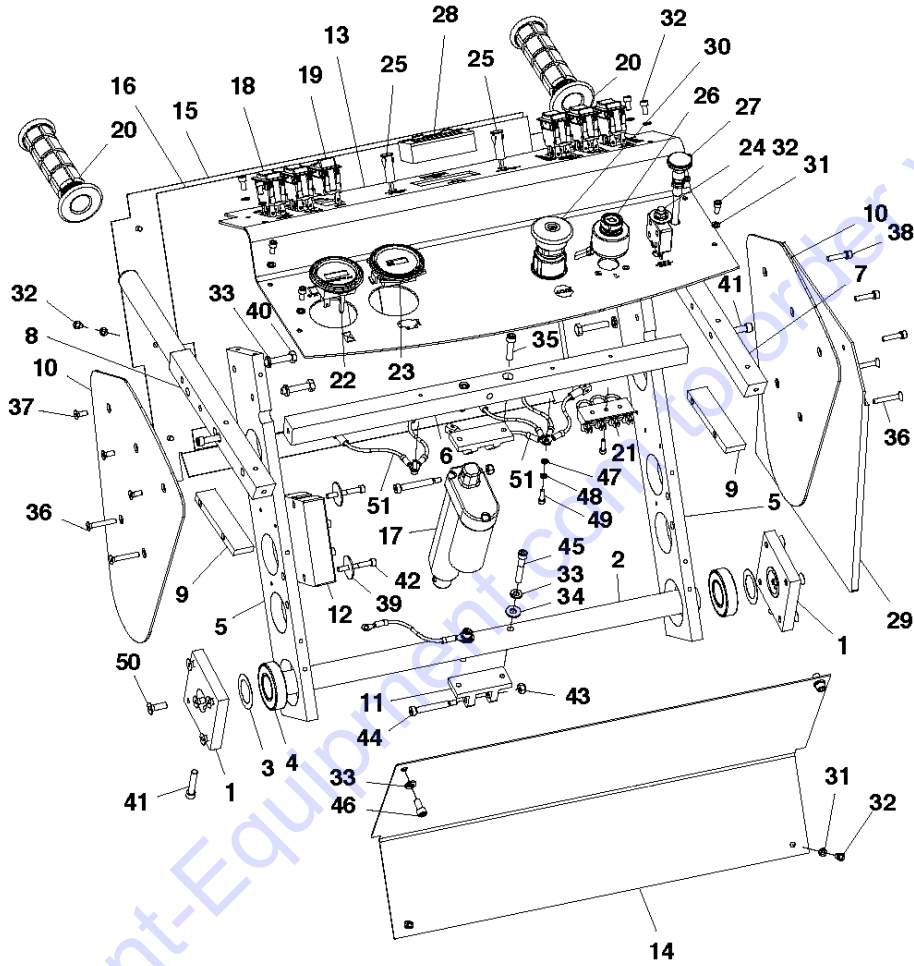
BLADE SHAFT

SOFF CUT 2500, 2015-06

Ref	Part No	Description	Remark	QTY KIT
1	505 73 65-01	BLADE SHAFT		2
2	505 57 32-03	SHAFT		1
3	505 49 15-04	WASHER		1
4	505 48 37-01	BOLT		1
5	587 92 97-01	PULLEY		1
6	510 31 81-01	KEY		1
7	510 34 34-01	SET SCREW KNURLED 5/16-18X 3/8		4
8	505 74 04-01	BELT		1
9	541 20 48-36	NUT		4
10	505 73 11-01	LK WASH 1/2 SPLIT SS		4
11	505 73 14-01	FLAT WASH 1/2 X 1 1/4 O.D. S.S		4
12	505 72 70-01	HEX BOLT 1/2-20-1 3/4 GR 8		4
13	505 88 07-01	BLADE SHAFT		1

Go to Discount-Equipment.com to order your parts

K SOFF CUT X2500
CONTROL PANEL ASSEMBLY



Go to Discount-Equipment.com for your parts

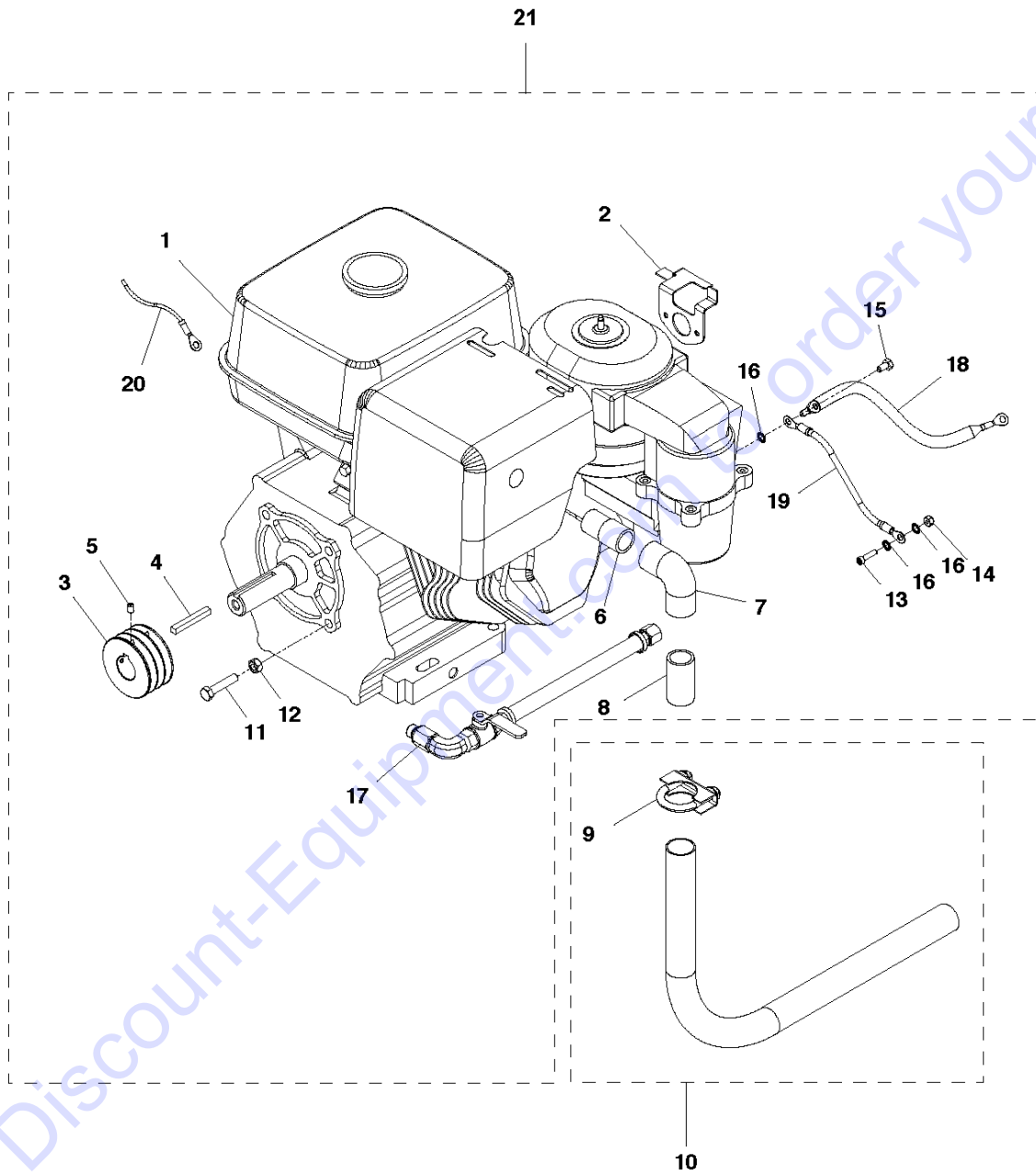
CONTROL PANEL

SOFF CUT 2500, 2015-06

Ref	Part No	Description	Remark	QTY KIT
1	505 71 21-01	PLATE SUPPORT. HANDLE SHAFT		2
2	505 71 20-01	SHAFT HANDLE (1" DIA. AL)		1
3	505 73 69-01	SHIM S.S. HANDLE		2
4	505 73 63-01	10"WHEEL/ BLK SEAL SINLE LIP		2
5	505 71 18-01	PLATE SUPPORT HANDLE		2
6	505 70 84-01	CROSS BAR (KEY DASH/ACT. PANEL		1
7	505 70 88-01	HANDLE BAR		1
8	505 70 89-01	HANDLE BAR		1
9	505 60 71-01	SPACER BAR HANDLE		2
10	505 71 19-01	SIDE COVER HANDLE (INTERCHANGE		2
11	505 70 66-01	ACT. BRKT AGLE /HDLE/MN FRAME		2
12	505 69 19-01	VOLTAGE REGULATOR/RECTIFIER		1
13	505 60 89-01	CONTROL PANEL SYSTEM		1
14	505 60 64-01	PAN		1
15	505 70 71-01	PANEL. COVER (HANDLE ACT.)		1
16	505 72 02-01	RUBBER FOR 1523		1
17	505 84 49-01	ACTUATOR		1
18	505 75 07-01	ACTUATOR		5
19	505 75 08-01	SWITCH LIGHTS		1
20	505 60 11-01	HANDLE GRIP		2
21	505 75 27-01	TERMINAL BLOCK FOR G2000		1
22	505 70 43-01	VOLT/HOUR METER		1
23	516 02 77-01	KIT		1
24	505 60 51-01	25 AMP. CIRCUIT BREAKER		1
25	505 84 60-01	G2/G1/GX3000 LED LIGHT		2
26	576389003	TBD		1
27	505 69 50-01	CHOKE CABLE		1
28	505 60 50-01	COMBO METER/TOTALIZER		1
29	505 72 15-01	JOINT		1
30	505 70 44-01	E-STOP		1
31	505 63 31-01	LK WASH #10 SPLIT SS		19
32	505 62 77-01	SHC 10-32-3/8 S.S. NF		16
33	505 63 28-01	LK WASH 1/4 SPLIT SS		8
34	505 63 20-01	WASHER		2
35	505 62 79-01	SHC 1/4-20-1 S.S.		2
36	505 72 98-01	FHS 10-24-1 1/4 S.S.		4
37	505 72 99-01	FHS 10-32-1/2 S.S.		3
38	505 77 28-01	SHC 10-32 X 7/8 SS		3
39	505 72 48-01	FLAT WASH #10 X 1"O.D.FENDER		2
40	505 72 74-01	HEX BOLT 1/4-20 X 1 1/4 GR. 8		4
41	505 62 80-01	SHC 1/4-20-1 1/4 S.S.		4
42	505 72 92-01	SHC 10-24 X 1 1/2 STAINLESS S		2
43	505 63 04-01	NYLOC NUT #10-24 CAD.PL.		2
44	505 72 60-01	SHSB 1/4 X 1 1/2 BLK STL		2
45	505 72 88-01	SHC 1/4-20-1 1/2 S.S.		2
46	505 72 23-01	SHC 1/4-20-1/2 S.S		2
47	505 73 17-01	LK WASH #8 EXT TOOTH		2
48	505 63 27-01	LK WASH #8 SPLIT S.S.		2
49	505 62 82-01	SHC 8-32 X 1/2 S.S.		3
50	505 62 86-01	FHS 1/4-20-3/4 S.S.		10
51	575 44 66-02	KIT		6

Go to [Disassembly.com](http://www.Disassembly.com) to order your parts

A SOFF CUT X2500
ENGINE ASSEMBLY



ENGINE

SOFF CUT 2500, 2015-06

Ref	Part No	Description	Remark	QTY	KIT
1	577 96 12-02	ENGINE		1	21
2	505 74 13-01	REMOTE CHOKE BRACKET(MODIFIED)		1	21
3	505 74 01-01	PULLEY		1	21
4	539 91 02-10	KEY		1	21
5	542 02 05-41	SHSS,.25-20 X.375 CUP HK/CONCR		4	21
6	505 61 14-01	EX NIPPLE FOR X2500 GROUND DOW		1	21
7	505 74 30-01	ELBOW		1	21
8	505 74 29-01	3/4" X 2" NIPPLE GALVANISED (1	21
9	505 74 32-01	MUFFLER CLAMP 1 1/8"		1	10
10	505 86 78-01	G2000 MUFFLER TUBING		1	
11	505 72 78-01	HEX BOLT 5/16-24-1 1/2 CAD GR		2	21
12	505 73 28-01	5/16-24 HEX JAM NUT ZINC		2	21
13	505 72 95-01	SHC 10-24 X 3/4 SS(G1 BATTERY)		1	21
14	505 63 04-01	NYLOC NUT #10-24 CAD.PL.		1	21
15	725 23 66-71	SCREW EHHM		1	21
16	505 73 18-01	LK WASH 1/4 EXT TOOTH		3	21
17	505 85 75-05	KIT		1	21
18	575 44 66-03	KIT		1	21
19	575 44 66-04	KIT		1	21
20	575 47 79-01	HARNESS		1	21
21	510 27 16-05	ASSEMBLY	Assembled	1	

Go to Discount-Equipment.com to order your parts

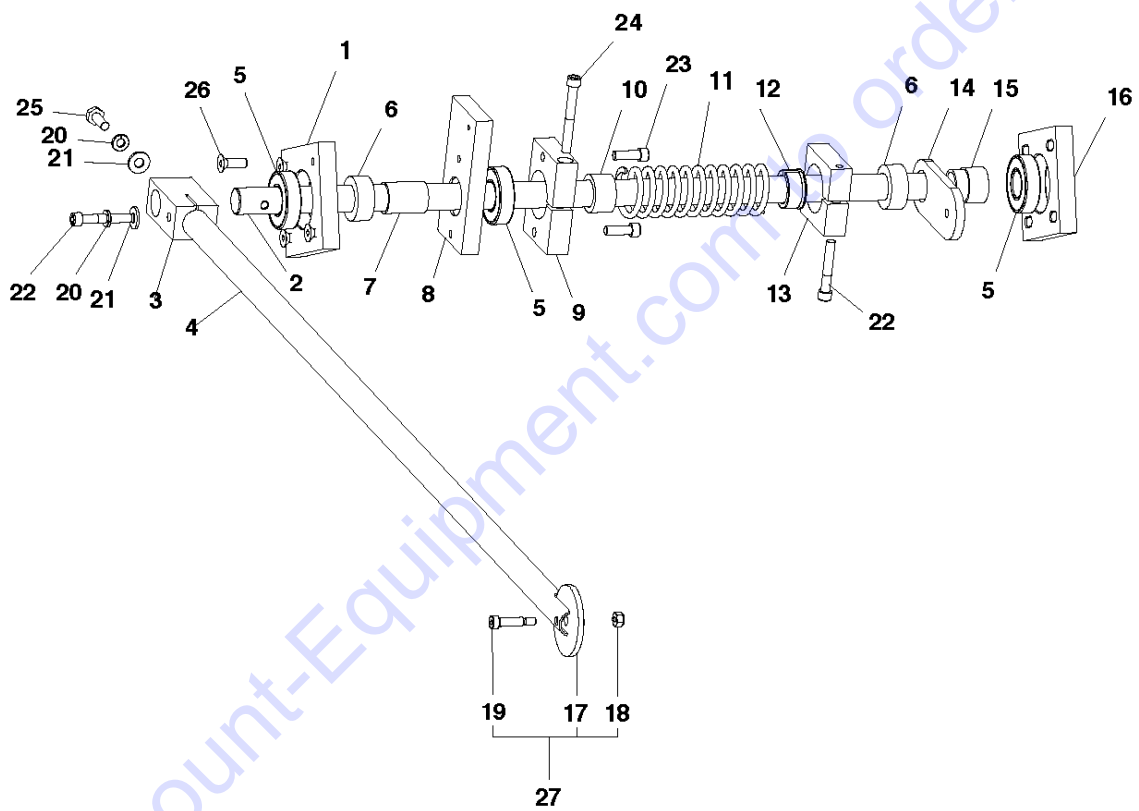
FRONT WHEEL CARRIAGE

SOFF CUT 2500, 2015-06

Ref	Part No	Description	Remark	QTY KIT
1	505 60 72-01	FRONT WHEEL CARRIAGE		1
2	505 65 51-01	DELRIN BUSHING - AXLE		2
3	505 71 39-01	AXLE		1
4	505 86 62-01	G2000 4 X 3 FRONT WHEEL		2
5	505 70 62-01	ACTUATOR		1
6	505 63 28-01	LK WASH 1/4 SPLIT SS		4
7	505 62 74-01	HEX BOLT 1/4-20-5/8 S.S.		2
8	505 73 35-01	SNAP RING		2
9	505 72 73-01	HEX BOLT 1/4-20-1 STAINLESS ST		2
10	505 63 19-01	JAM NUT 1/4-20 STAINLESS STEEL		2
11	505 73 61-01	FRONT WHL G2/ BLK SEAL SGL LIP		4

Go to Discount-Equipment.com to order your parts

N SOFF CUT X2500
GUIDE ARM ASSEMBLY



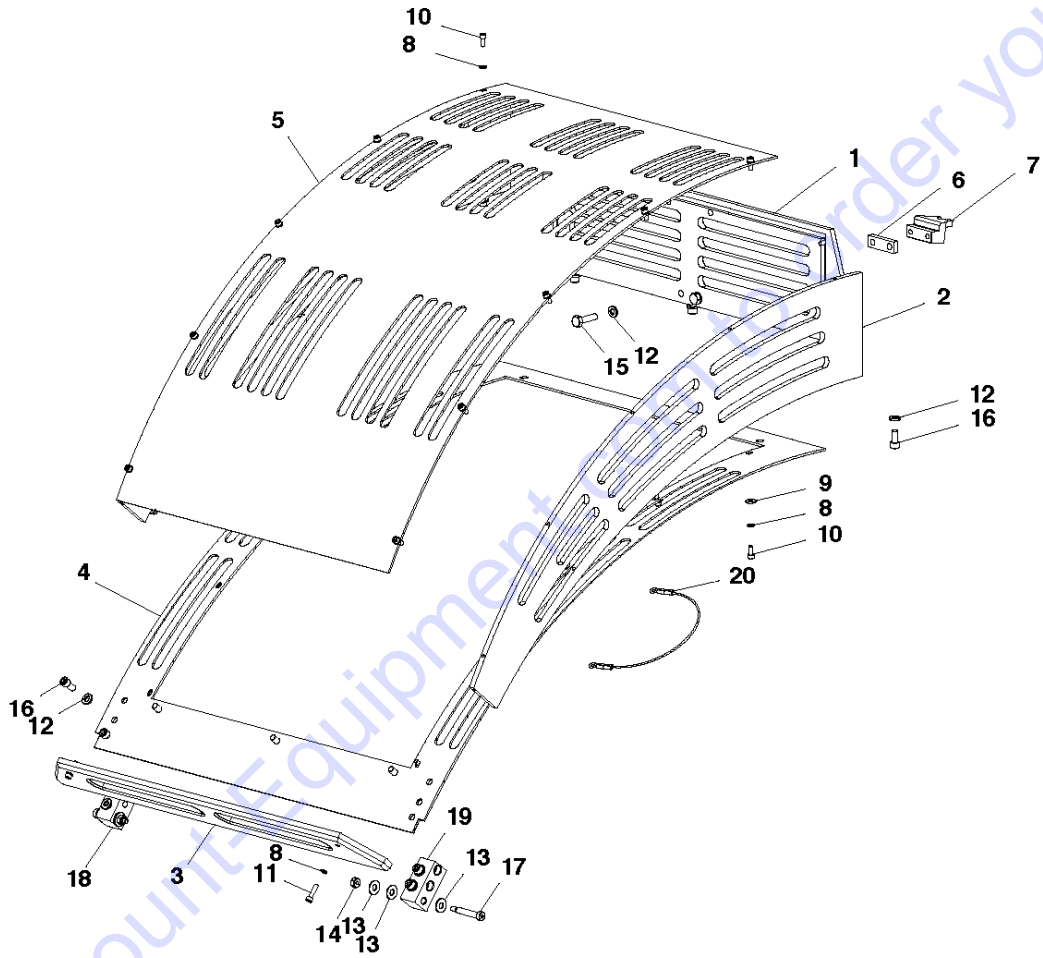
GUIDE ARM ASSEMBLY

SOFF CUT 2500, 2015-06

Ref	Part No	Description	Remark	QTY	KIT
1	505 71 37-01	PLATE MOUNTING GUIDE ARM		1	
2	505 71 36-01	SHAFT. GUIDE ARM 3/4" DIA		1	
3	505 70 70-01	BLOCK TUBE MTG G.A.		1	
4	505 71 35-01	TUBE. GUIDE ARM		1	
5	505 73 61-01	FRONT WHL G2/ BLK SEAL SGL LIP		3	
6	505 71 84-01	SHAFT. COLLAR 3/4"		2	
7	505 71 62-01	BUSHING		1	
8	505 71 71-01	SPRING		1	
9	505 71 72-01	BLOCK		1	
10	505 71 75-01	BUSHING		1	
11	505 73 75-01	SPRING		1	
12	505 71 74-01	BUSHING		1	
13	505 71 73-01	BLOCK		1	
14	505 71 91-01	PLATE.HOOD SUPPORT		1	
15	505 71 93-01	BUSHING DELRIN.HOOD SUPPORT		1	
16	505 71 38-01	PLATE MOUNT/GUIDE ARM ADJ.		1	
17	505 61 42-01	G.M.WHEEL (YEL)		1	27
18	505 63 04-01	NYLOC NUT #10-24 CAD.PL.		1	27
19	505 72 58-01	SHSB 1/4 X 3/4 BLK STL		1	27
20	505 63 28-01	LK WASH 1/4 SPLIT SS		2	
21	505 63 20-01	WASHER		2	
22	505 72 88-01	SHC 1/4-20-1 1/2 S.S.		2	
23	505 62 78-01	SHC 1/4-20-3/4 S.S.		2	
24	505 72 89-01	SHC 1/4-20-2 S.S.		1	
25	505 62 75-01	HEX BOLT 1/4-20-3/4 S.S.		1	
26	505 62 86-01	FHS 1/4-20-3/4 S.S.		4	
27	505 87 77-01	G2000 GUIDE TUBE WHEEL		1	

Go to Discount-Equipment.com to order your parts

T SOFF CUT X2500
HOOD ASSEMBLY



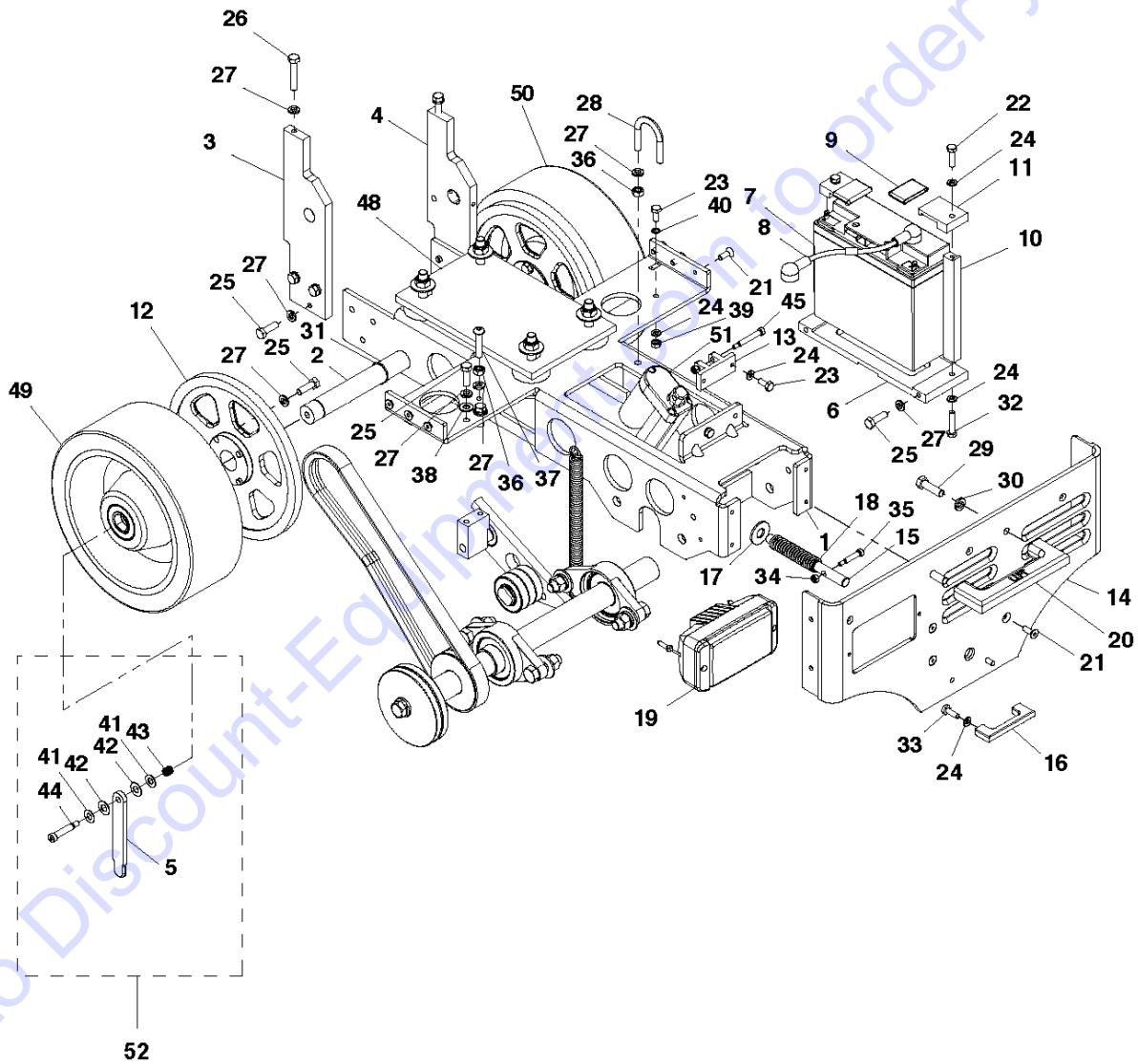
HOOD

SOFF CUT 2500, 2015-06

Ref	Part No	Description	Remark	QTY KIT
1	505 71 25-01	REAR PLATE HOOD		1
2	505 60 85-01	SIDE HOOD PANEL		2
3	505 71 24-01	FRONT PLATE HOOD		1
4	505 60 84-01	HOOD		1
5	505 60 83-01	HOOD		1
6	505 64 34-01	SPACER		1
7	505 71 95-01	BLOCK.HOOD LATCH		1
8	505 63 27-01	LK WASH #8 SPLIT S.S.		24
9	505 82 26-01	FLAT WASH. #8 SAE 18-8 SS		10
10	505 62 81-01	SHC 8-32 X 3/8 S.S.		20
11	505 72 91-01	SHC 8-32-5/8 S.S.		4
12	505 63 28-01	LK WASH 1/4 SPLIT SS		12
13	505 63 44-01	WASHER		6
14	505 63 04-01	NYLOC NUT #10-24 CAD.PL.		2
15	505 72 73-01	HEX BOLT 1/4-20-1 STAINLESS ST		2
16	505 72 23-01	SHC 1/4-20-1/2 S.S		10
17	505 81 17-01	SHSB 1/4 X 1 1/4		2
18	505 71 31-01	BLOCK. HOOD MOUNTING (RIGHT)		1
19	505 71 30-01	BLOCK. HOOD MOUNTING (LEFT)		1
20	505 86 52-01	X2500 HOOD STOP WIRE		1

Go to Discount-Equipment.com to order your parts

P SOFF CUT X2500
MAINFRAME ASSEMBLY



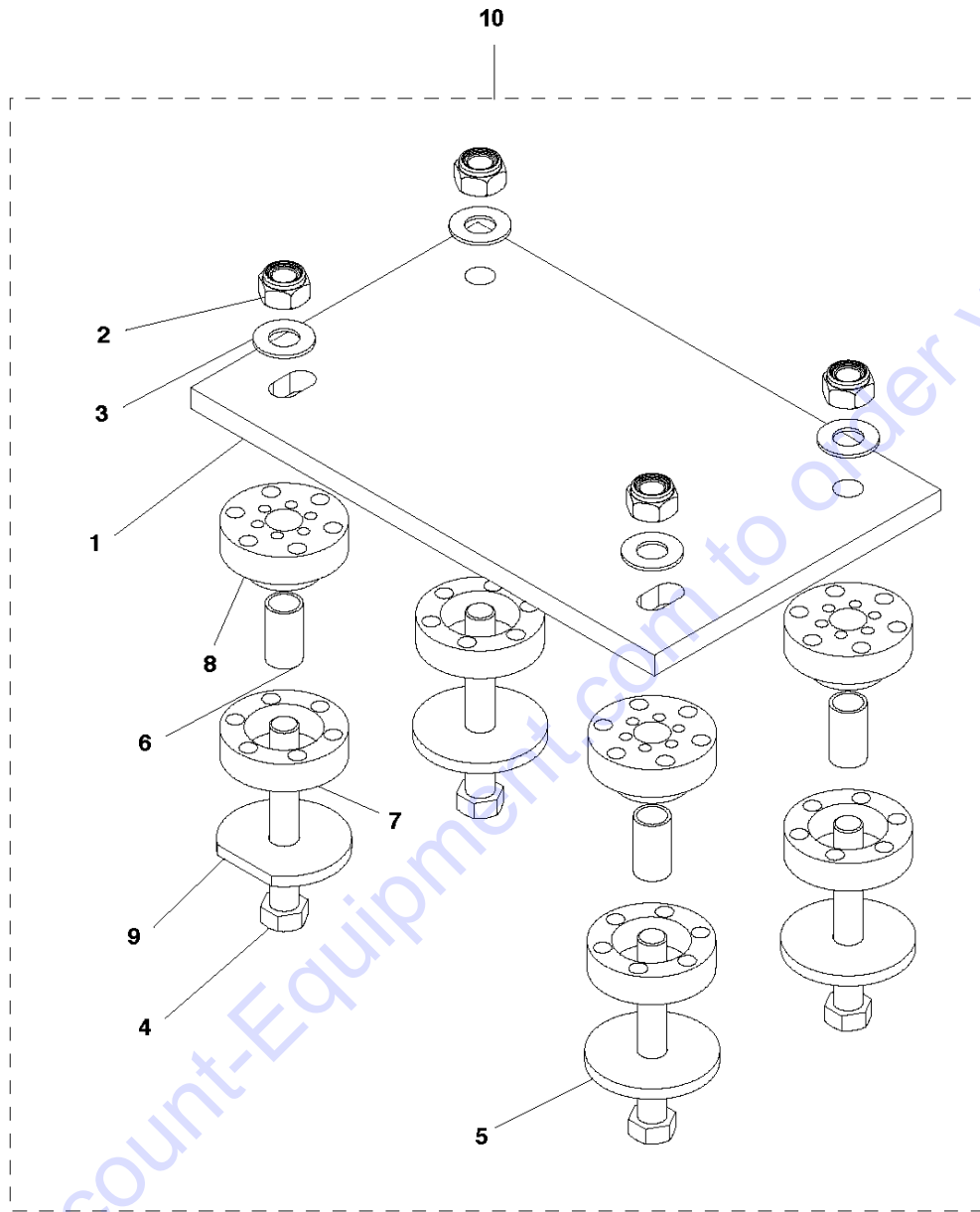
MAINFRAME

SOFF CUT 2500, 2015-06

Ref	Part No	Description	Remark	QTY KIT
1	505 60 94-01	MAINFRAME. CE		1
2	505 60 54-01	AXLE		1
3	505 70 53-01	PUMP SUPPORT ARM (RIGHT)		1
4	505 60 74-01	PUMP SUPPORT ARM LEFT		1
5	505 71 85-01	REAR GUIDE ARM		1
6	505 71 40-01	BATTERY SUPPORT PLATE		1
7	505 74 99-01	BATTERY		1
8	575 47 78-01	WIRE ASSY		1
9	505 74 70-01	BATTERY CLAMP COVERS(BLACK)(2)		2
10	505 71 80-01	ARM		2
11	505 71 81-01	BLOCK.BATTERY G2000 & GS1000		2
12	505 86 50-01	X2500 REAR WHEEL GEAR		2
13	505 70 66-01	ACT. BRKT AGLE /HDLE/MN FRAME		1
14	505 60 52-01	FRONT PLATE		1
15	505 71 41-01	SHAFT		1
16	505 71 42-01	GUARD ARBOR LOCK SHAFT		1
17	505 73 14-01	FLAT WASH 1/2 X 1 1/4 O.D. S.S		1
18	505 73 74-01	SPRING		1
19	505 48 50-01	HEADLAMP		1
20	505 71 69-01	HANDLES		1
21	505 62 86-01	FHS 1/4-20-3/4 S.S.		10
22	505 72 73-01	HEX BOLT 1/4-20-1 STAINLESS ST		2
23	505 62 74-01	HEX BOLT 1/4-20-5/8 S.S.		3
24	505 63 28-01	LK WASH 1/4 SPLIT SS		9
25	539 99 02-09	SCREW		18
26	505 72 85-01	HEX BOLT 5/16-18 X 1 3/4 GRADE		2
27	505 63 30-01	LK WASH 5/16 SPLIT SS		23
28	575 42 13-01	CLAMP		1
29	539 97 69-41	SCREW		2
30	505 73 10-01	LK WASH 3/8 SPLIT SS		2
31	542 20 62-05	SNAP RING		3
32	505 72 74-01	HEX BOLT 1/4-20 X 1 1/4 GR. 8		2
33	505 62 75-01	HEX BOLT 1/4-20-3/4 S.S.		2
34	505 63 04-01	NYLOC NUT #10-24 CAD.PL.		2
35	505 72 59-01	SHSB 1/4 X 1 BLK STL		1
36	505 73 24-01	NUT		3
37	505 72 28-01	BHS 5/16-18-1 1/2 S.S.		1
38	539 99 01-88	WASHER		2
39	505 63 19-01	JAM NUT 1/4-20 STAINLESS STEEL		1
40	505 73 18-01	LK WASH 1/4 EXT TOOTH		1
41	505 72 52-01	WASHER		2
42	505 63 45-01	FLAT WSHR .750X.379 X.031 DEL		2
43	505 63 60-01	SPRING		1
44	505 72 66-01	SHSB 5/16 X 1 1/4 BLK STL		1
45	505 72 60-01	SHSB 1/4 X 1 1/2 BLK STL		1
48	505 85 78-01	SNUBBING MOTOR MNT KIT		1
49	505 86 53-01	X2500 RIGHT REAR WHEEL		1
50	505 86 54-01	X2500 LEFT REAR WHEEL		1
51	505 84 47-01	BLADE		1
52	505 85 79-01	REAR GUIDE ARM FOR G2000		1

Go to [DiscountParts.com](http://www.discountparts.com) to order your parts

B SOFF CUT X2500
MOTOR MOUNT BUSHING



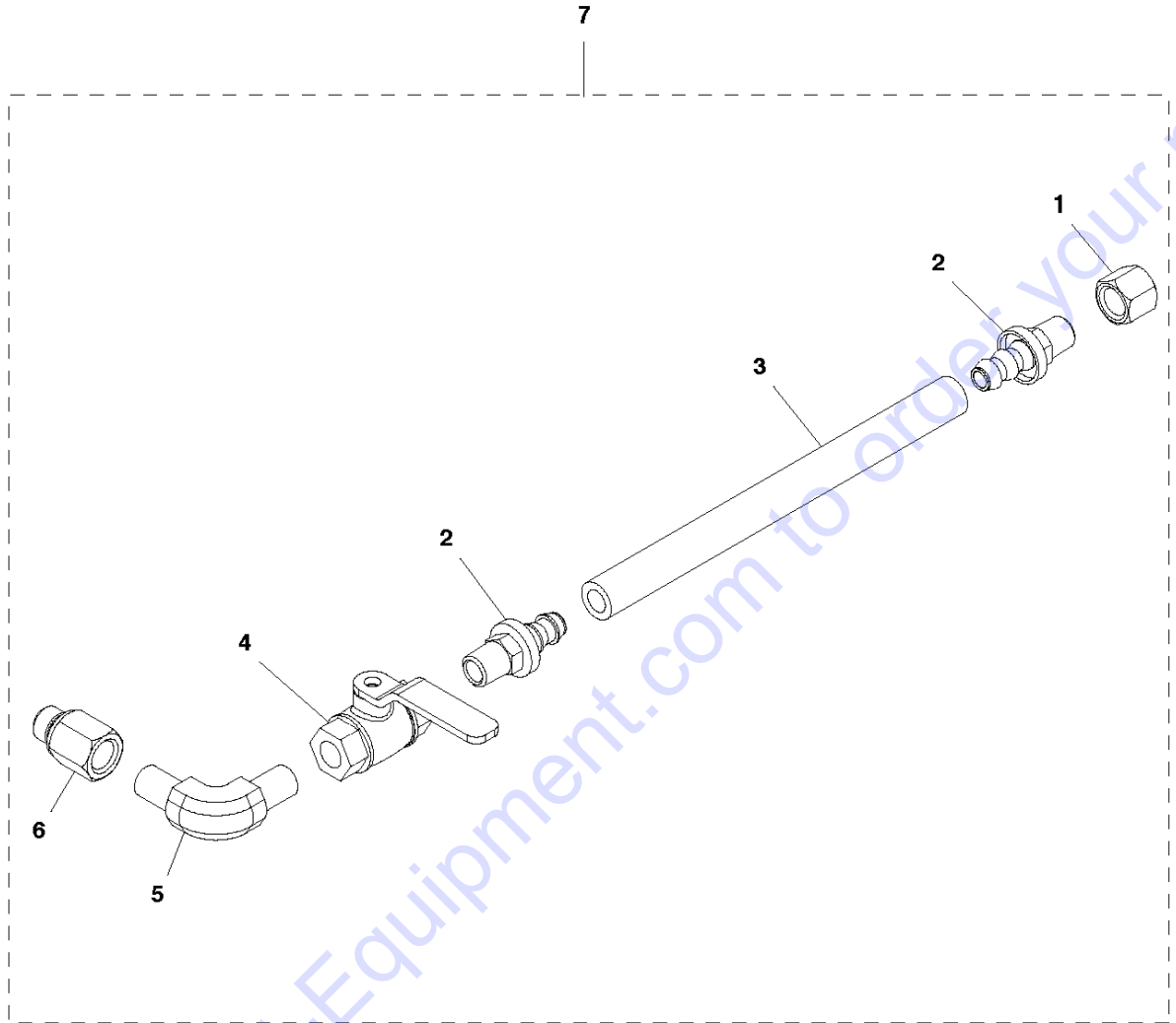
MOTOR MOUNT BUSHING

SOFF CUT 2500, 2015-06

Ref	Part No	Description	Remark	QTY	KIT
1	505 60 92-02	PLATE		1	10
2	541 20 57-26	NUT		4	10
3	510 30 21-01	WASHER		4	10
4	510 31 76-01	HEX BOLT 7/16-14 X 3 1/4 GRD 8		4	10
5	505 60 99-01	SNUBBING WASHER (X2509)		3	10
6	505 60 98-01	SPACER		4	10
7	505 61 02-01	RING		4	10
8	505 61 03-01	BUSHING		4	10
9	505 61 01-01	SNUBBING WASHER W/FLAT (X2509)		1	10
10	505 85 78-01	SNUBBING MOTOR MNT KIT		1	

Go to Discount-Equipment.com to order your parts

C SOFF CUT X2500
OIL DRAIN



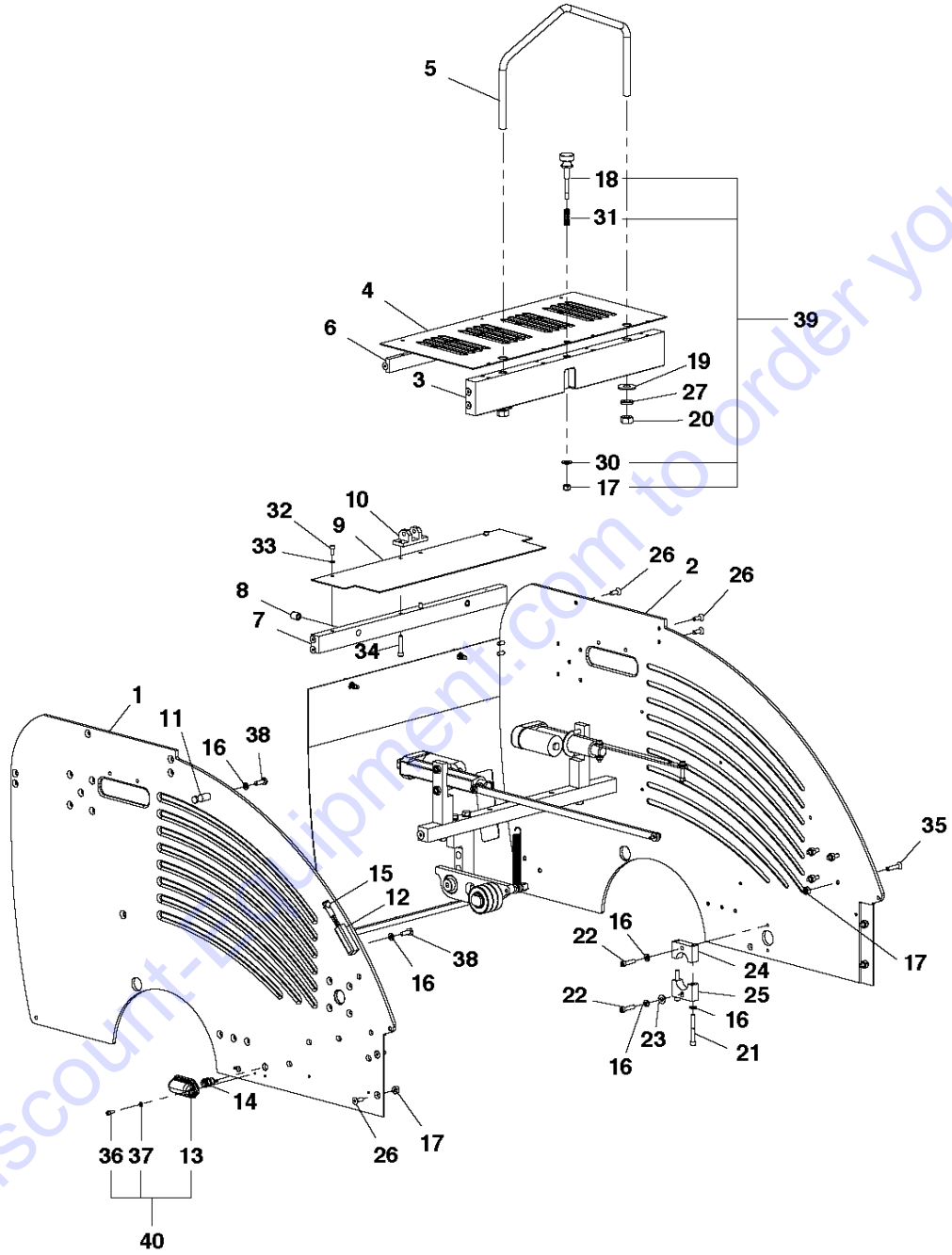
OIL DRAIN

SOFF CUT 2500, 2015-06

Ref	Part No	Description	Remark	QTY	KIT
1	505 77 66-01	DUST CAP FOR OIL DRAIN-RP85123		1	7
2	505 73 86-01	GATES 6LOC-4RMP PUSH ON FITTIN		2	7
3	505 73 85-01	GATES 6 LOLA+ 3/8 I.D. HOSE		1	7
4	505 73 89-01	LHA BALL VALVE BV-04N		1	7
5	505 73 87-01	HCI ADAPTER MP-MP90-4-4		1	7
6	505 73 88-01	PM0412 1/4 NPT TO 12MM METRIC		1	7
7	505 85 75-05	KIT		1	

Go to Discount-Equipment.com to order your parts

S SOFF CUT X2500
PANEL ASSEMBLY



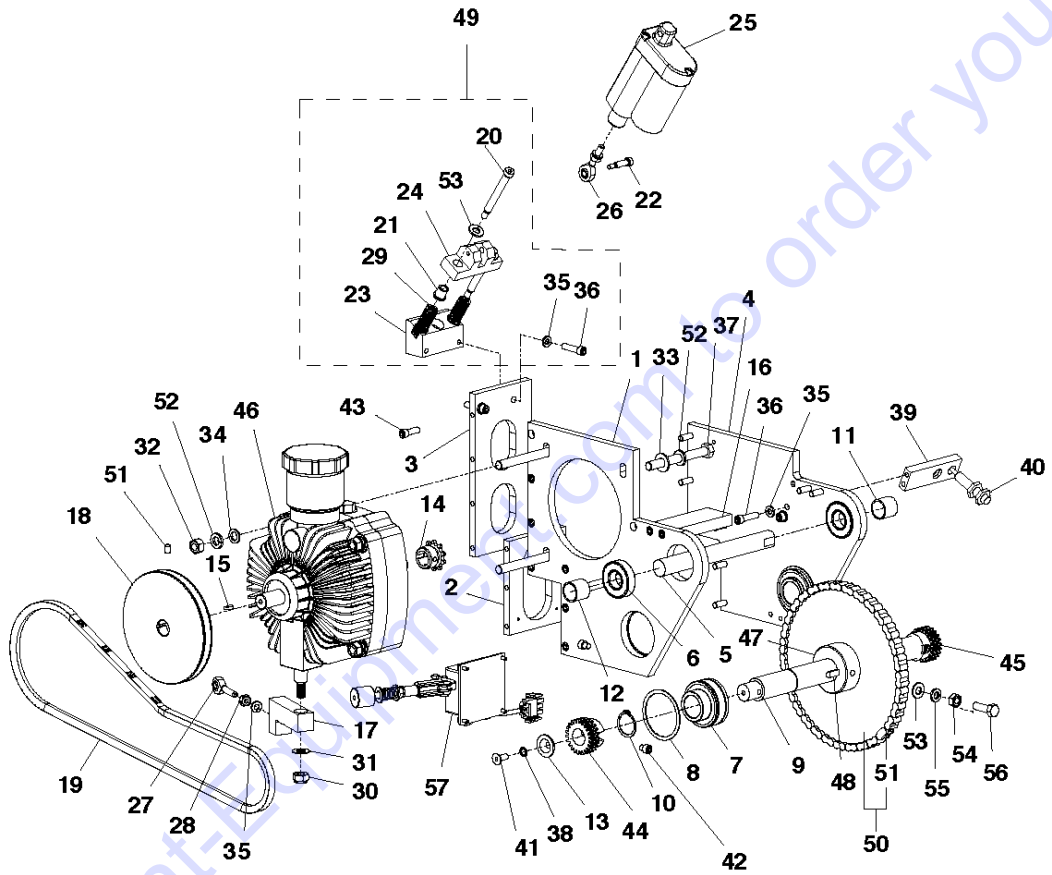
PANEL ASSEMBLY

SOFF CUT 2500, 2015-06

Ref	Part No	Description	Remark	QTY KIT
1	505 60 65-01	SIDE PLATE (RIGHT)		1
2	505 60 66-01	SIDE PLATE (LEFT)		1
3	505 60 69-01	CROSSBAR		1
4	505 60 68-01	PAN		1
5	505 60 70-01	LIFTING HOOK		1
6	505 70 86-01	CROSS BAR (SIDE PANEL SUPPORT)		1
7	505 70 85-01	CROSS BAR (REAR ACCESS PANEL)		1
8	505 74 83-01	THREADED INSERT S.S.		3
9	505 70 73-01	PANEL. COVER (HANDLE ACT. CROS		1
10	505 70 65-01	ACTUATOR		1
11	505 71 86-01	ROD G.A. STOP		1
12	505 71 77-01	HOUSING		1
13	505 75 25-01	LIGHT. SIDE		1
14	505 78 78-01	SENSOR FOR FPM GAUGE		1
15	505 84 60-01	G2/G1/GX3000 LED LIGHT		1
16	505 63 28-01	LK WASH 1/4 SPLIT SS		6
17	505 63 05-01	NYLOC NUT 1/4-20 CAD PL.		9
18	505 76 72-01	HOOD		1
19	505 73 14-01	FLAT WASH 1/2 X 1 1/4 O.D. S.S		2
20	505 73 33-01	1/2-13 HEX NUT GOLD GR.8		2
21	505 72 89-01	SHC 1/4-20-2 S.S.		2
22	505 62 79-01	SHC 1/4-20-1 S.S.		2
23	505 63 20-01	WASHER		1
24	505 71 67-01	PLATE. MUFFLER EXT. CLP TOP		1
25	505 71 68-01	PLATE. MUFFLER EXT. CLP BOTTOM		1
26	505 62 86-01	FHS 1/4-20-3/4 S.S.		14
27	505 73 11-01	LK WASH 1/2 SPLIT SS		2
30	505 72 55-01	FLAT WASH 1/4 PFC9 SAE ZINC		1
31	505 73 71-01	#520 SPRG THRD KNB/11/21/97		9
32	505 72 96-01	SHC 10-32 X 1/2 S.S. CBL MTS		2
33	505 63 31-01	LK WASH #10 SPLIT SS		2
34	505 62 80-01	SHC 1/4-20-1 1/4 S.S.		2
35	505 77 34-01	1/4-20 X 1 1/4 FLAT SOCKET SS		4
36	505 62 82-01	SHC 8-32 X 1/2 S.S.		2
37	505 63 27-01	LK WASH #8 SPLIT S.S.		2
38	505 62 75-01	HEX BOLT 1/4-20-3/4 S.S.		2
39	505 88 66-01	G2000.G1000.GX3000-HOOD KNOB		1
40	505 48 69-01	LAMP		1

Go to Discount-Equipment.com to order your parts

H SOFF CUT 2500
PUMP ASSEMBLY

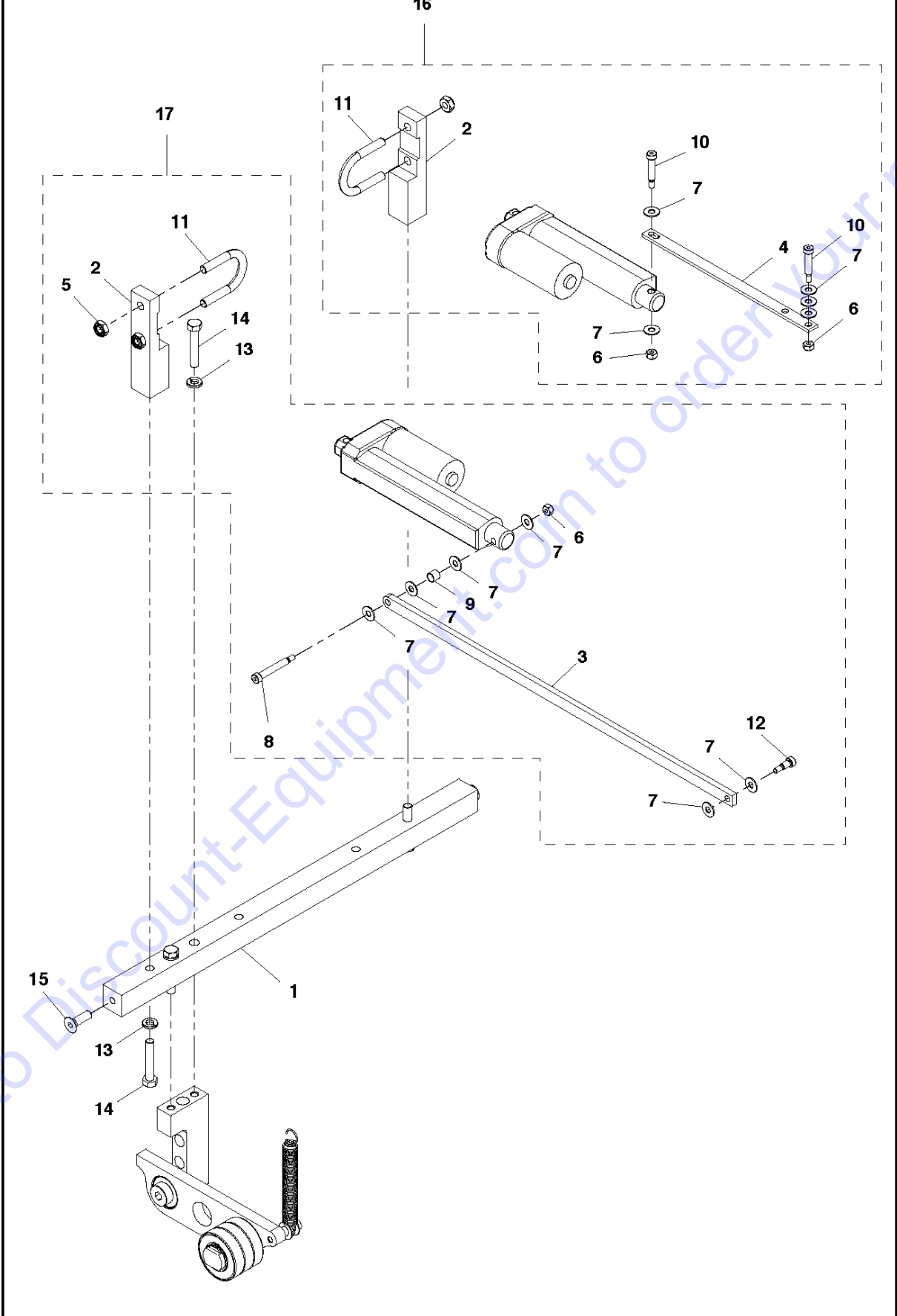


PUMP

SOFF CUT 2500, 2015-06

Ref	Part No	Description	Remark	QTY	KIT
1	505 70 59-01	PUMP SUPPORT PLATE(RIGHT)		1	
2	505 70 61-01	PUMP REAR BRACE PLATE		1	
3	505 70 60-01	ACTUATOR		1	
4	505 60 76-01	PUMP SUPPORT PLATE LEFT		1	
5	505 60 55-01	SHAFT		1	
6	505 73 61-01	FRONT WHL G2/ BLK SEAL SGL LIP		2	
7	505 68 94-01	PUMP/DRIVE SHAFT BEARING		2	
8	505 69 02-01	SNAP RING		4	
9	505 60 53-01	DRIVE SHAFT		1	
10	542 20 62-05	SNAP RING		2	
11	505 60 57-01	PUMP SPACER		1	
12	505 71 60-01	BUSHING		1	
13	505 76 48-01	SS WASHER FOR DRIVE SHAFT		2	
14	587 65 99-01	SPROCKET		1	
15	539 30 07-49	KEY, #3 WOODRUFF		1	
16	505 75 67-01	ACTUATOR		1	
17	505 71 49-01	PUMP CONTROL ARM GS1000 & G20		1	
18	505 73 98-01	PULLEY PUMP 1/3V 5.00 X 17 MM		1	
19	505 48 40-04	BELT		1	
20	505 81 19-01	SHSB 5/16 X 2 1/4 (GUIDE)		2	49
21	505 60 22-01	FLANGED SLEEVE BEARING. BRONZE		2	49
22	505 72 58-01	SHSB 1/4 X 3/4 BLK STL		1	
23	505 71 87-01	PUMP SPRING BLOCK G2000 & GS10		1	49
24	580882801	TBD		1	49
25	505 84 46-01	ACTUATOR		1	
26	505 74 34-01	ROD END 1/4" PLATED		1	
27	505 74 34-01	ROD END 1/4" PLATED		1	
28	505 73 29-01	1/4-28 HEX JAM NUT ZINC		2	
29	505 60 29-01	SPRING		2	49
30	539 97 69-79	NUT		1	
31	505 63 42-01	FLAT WSHR.750 X .375 X .031 SS		1	
32	539 99 01-30	NUT		4	
33	539 99 05-17	WASHER		4	
34	505 72 40-01	FLAT WASH 3/8 AN 960 WASHERS U		4	
35	505 63 28-01	LK WASH 1/4 SPLIT SS		6	49
36	505 62 79-01	SHC 1/4-20-1 S.S.		4	49
37	505 72 77-01	HEX BOLT 3/8-16-3 1/2 CAD GR 5		4	
38	505 73 18-01	LK WASH 1/4 EXT TOOTH		2	
39	505 60 75-01	SENSOR BRACKET		1	
40	505 75 41-01	PROX SW/COUNTER		1	
41	505 73 05-01	FHS 1/4-20 X 5/8 SS		2	
42	505 77 27-01	1/4-20 X 1/4 SHCS SS		4	
43	505 62 78-01	SHC 1/4-20-3/4 S.S.		17	
44	505 77 71-01	1623 SPR GER/1 1/2-3")LEFT SID		1	
45	505 60 24-01	S1622 SPUR GEAR		1	
46	505 73 83-01	HYDROSTATIC PUMP		1	
47	505 73 94-01	SPROCKET		1	
48	510 31 81-01	KEY		1	
49	505 88 29-01	X2500 PUMP SPRING BLOCK		1	
50	505 86 72-01	G2/G1000 DRIVE CHAIN 26"		1	
51	542 02 05-41	SHSS,.25-20 X.375 CUP HK/CONCR		2	
52	505 73 10-01	LK WASH 3/8 SPLIT SS		8	
53	539 99 01-88	WASHER		3	49
54	539 99 01-30	NUT		1	
55	505 63 30-01	LK WASH 5/16 SPLIT SS		1	
56	539 99 02-09	SCREW		1	
57	505 84 51-01	SPEED CONTROL ACT. FOR ALL GAS		1	

Q SOFF CUT X2500
PUMP CROSS BAR ASSEMBLY



Go to Discount-Equipment.com to order your parts

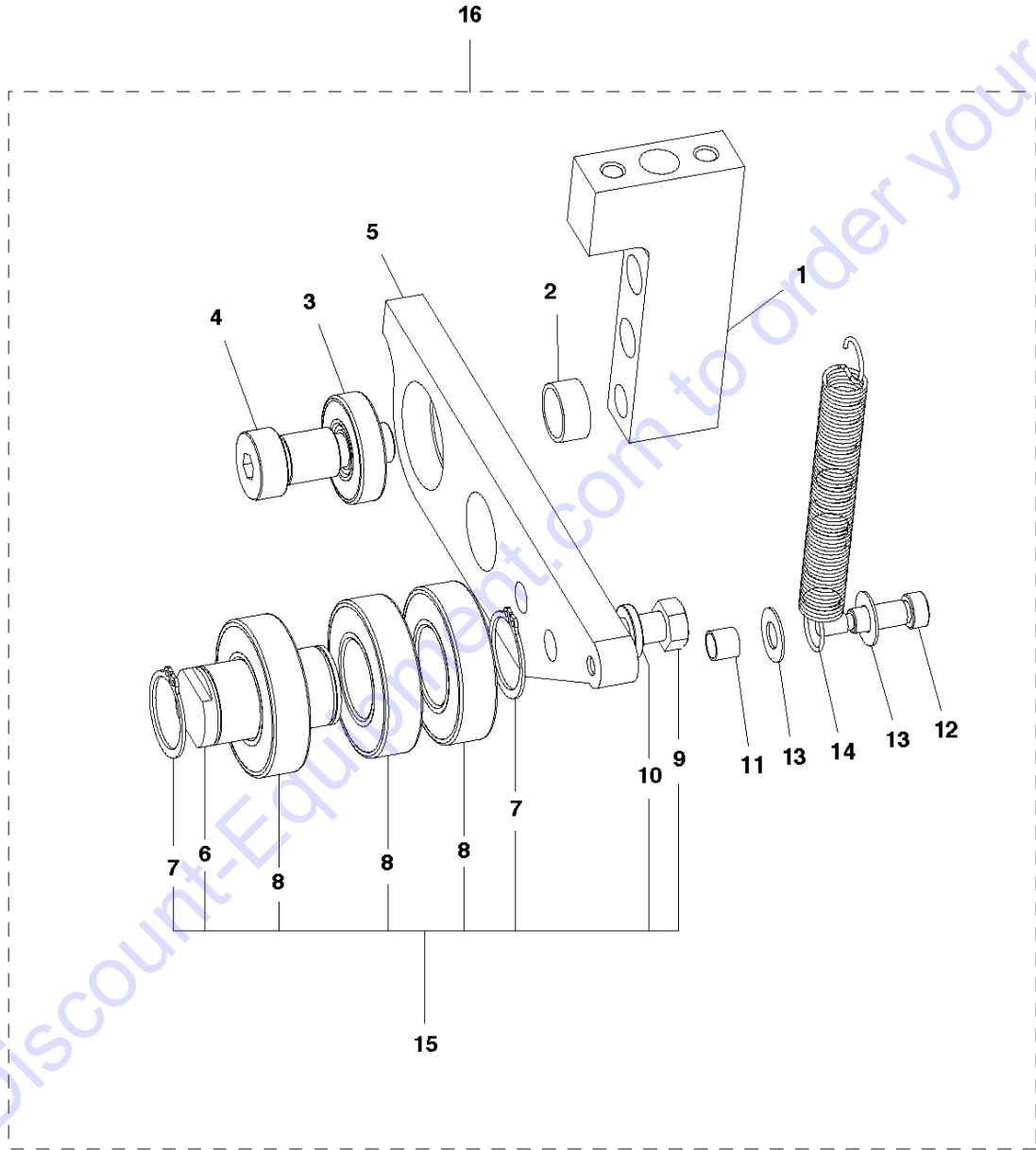
PUMP CROSS BAR ASSEMBLY

SOFF CUT 2500, 2015-06

Ref	Part No	Description	Remark	QTY	KIT
1	505 60 58-01	CROSSBAR		1	
2	505 61 10-01	ACTUATOR		2	17
3	505 61 11-01	ACTUATOR		1	17
4	505 71 58-01	G2/X2500 THRTL ARM W/SLOT		1	16
5	505 63 17-01	NYLOC NUT 5/16-18 .265"HT.		4	17
6	505 63 04-01	NYLOC NUT #10-24 CAD.PL.		3	16,17
7	505 63 44-01	WASHER		11	16
8	505 72 60-01	SHSB 1/4 X 1 1/2 BLK STL		1	17
9	505 71 79-01	BUSHING.G.A.(.315 SPACER)		1	17
10	505 72 59-01	SHSB 1/4 X 1 BLK STL		2	16
11	575 42 13-01	CLAMP		2	16,17
12	505 68 64-01	SHSB 1/4 X 3/8 BLK STL		1	17
13	505 63 30-01	LK WASH 5/16 SPLIT SS		4	17
14	505 72 85-01	HEX BOLT 5/16-18 X 1 3/4 GRADE		4	17
15	505 73 01-01	FHS 5/16-18-1 S.S.		2	
16	505 84 48-01	ACTUATOR		1	
17	505 84 50-01	ACTUATOR		1	

Go to Discount-Equipment.com to order your parts

E SOFF CUT X2500
PUMP IDLER PULLEY



Go to Discount-Equipment.com to order your parts

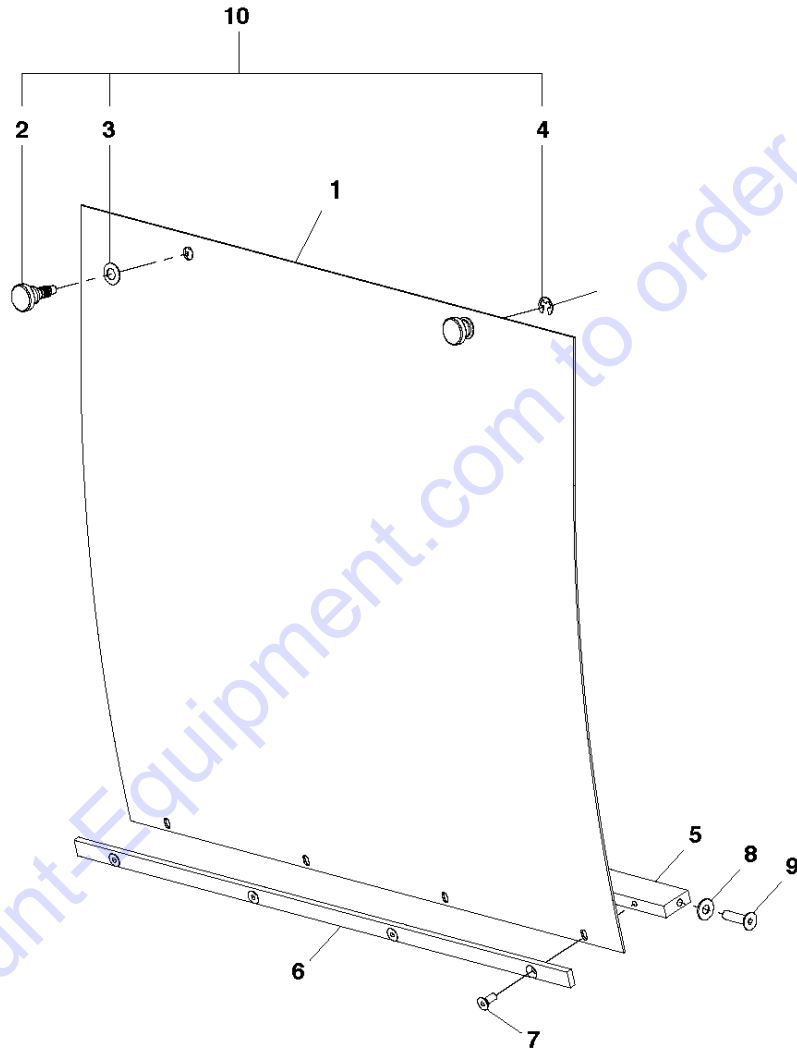
PUMP IDLER PULLEY

SOFF CUT 2500, 2015-06

Ref	Part No	Description	Remark	QTY	KIT
1	505 71 44-01	MTG BLOCK PUMP IDLER PULLEY		1	16
2	505 71 46-02	SPACER		1	16
3	505 73 60-01	IDLER PULLEYS BLK SEAL SGL LIP		1	16
4	505 72 62-01	SHSB 5/8 X 3/4 BLK STL		1	16
5	505 70 69-01	PUMP ARM IDLER PULLEY		1	16
6	505 70 68-01	SHAFT. BLADE BELT TENSIONER (P		1	15,16
7	542 20 62-05	SNAP RING		2	15,16
8	505 73 63-01	10"WHEEL/ BLK SEAL SINLE LIP		3	15,16
9	539 97 69-41	SCREW		1	15,16
10	505 73 10-01	LK WASH 3/8 SPLIT SS		1	15,16
11	505 71 79-01	BUSHING.G.A.(.315 SPACER)		1	16
12	505 72 64-01	SHSB 5/16 X 3/4 BLK STL		1	16
13	505 72 52-01	WASHER		2	16
14	505 73 79-01	SPRING		1	16
15	505 48 34-01	PULLEY		1	16
16	505 85 74-01	G2000 & G3000 PUMP PULLEY KIT		1	

Go to Discount-Equipment.com to order your parts

R SOFF CUT X2500
REAR ACCESS ASSEMBLY



Go to Discount-Equipment.com to order your parts

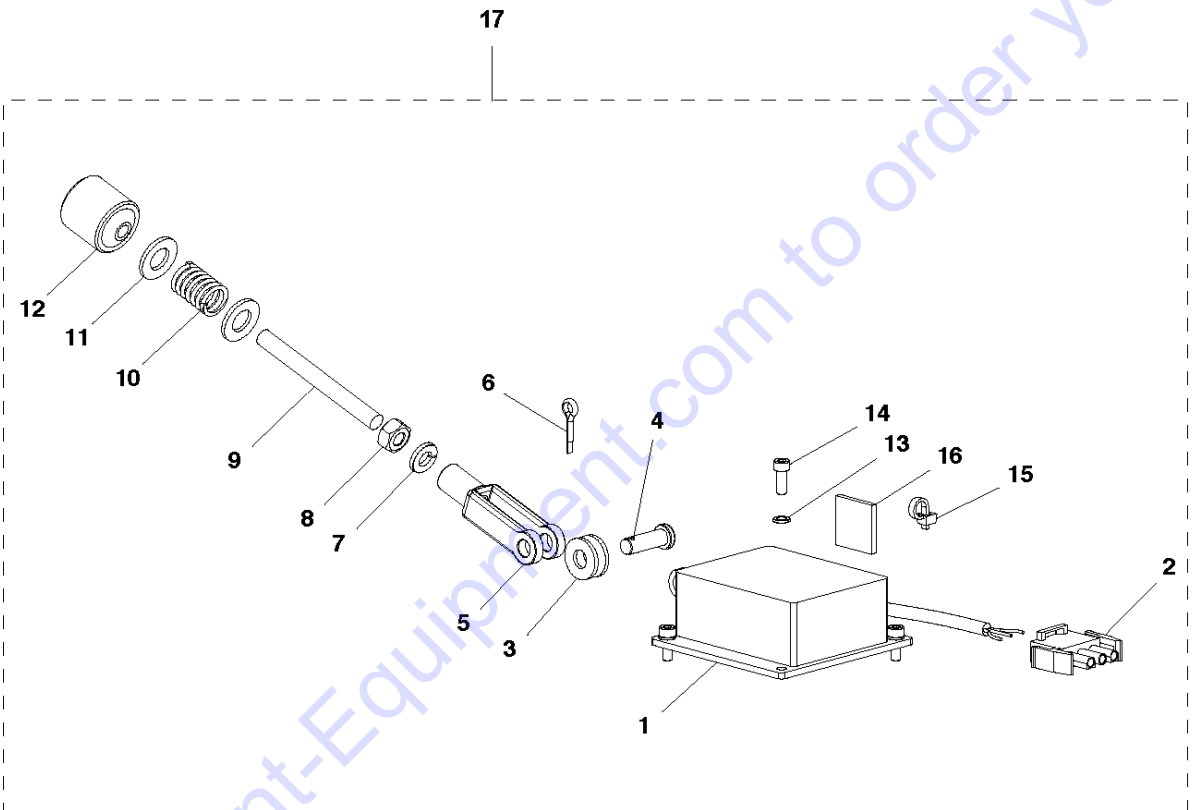
REAR ACCESS ASSEMBLY

SOFF CUT 2500, 2015-06

Ref	Part No	Description	Remark	QTY KIT
1	505 60 96-01	PANEL. REAR ACCESS. CE		1
2	505 53 63-01	KNOB		2
3	505 53 64-01	WASHER		2
4	505 53 65-01	E-CLIP		2
5	505 71 70-01	CROSSBAR		1
6	505 71 94-01	REAR ACCESS PANEL BRACE		1
7	505 72 99-01	FHS 10-32-1/2 S.S.		4
8	505 63 44-01	WASHER		2
9	505 62 87-01	FHS 1/4-20-1 S.S.		2
10	505 48 29-01	KNOB		1

Go to Discount-Equipment.com to order your parts

J SOFF CUT X2500
SPEED CONTROL ACTUATOR



SPEED CONTROL

SOFF CUT 2500, 2015-06

Ref	Part No	Description	Remark	QTY	KIT
1	505 84 51-01	SPEED CONTROL ACT. FOR ALL GAS		1	17
2	505 75 16-01	CONN 3 PIN PLUG		1	17
3	505 63 20-01	WASHER		2	17
4	505 74 35-01	CLEVIS		1	17
5	505 74 33-01	YOKE END FEM.TH D		1	17
6	505 73 97-01	COTTER PIN		1	17
7	505 63 28-01	LK WASH 1/4 SPLIT SS		1	17
8	505 73 29-01	1/4-28 HEX JAM NUT ZINC		1	17
9	505 77 08-01	1/4-28 X 2 1/2 STUD-SPD CTRL		1	17
10	505 77 51-01	#510 SPRG FOR STUD/SPD CTRL		1	17
11	505 72 55-01	FLAT WASH 1/4 PFC9 SAE ZINC		2	17
12	505 75 52-01	ADJUSTER		1	17
13	505 63 24-01	LK WASH #6 SPLIT S.S.		4	17
14	505 62 76-01	SHC 6-32 X 3/8 S.S.		4	17
15	510 33 17-01	TIE WRAP		1	17
16	510 33 16-02	TIE WRAP		1	17
17	505 84 51-01	SPEED CONTROL ACT. FOR ALL GAS		1	

Go to Discount-Equipment.com to order your parts

PARTS FINDER

**Search Website
by Part Number**



**Search Manual
Library For Parts
Manual & Lookup Part
Numbers – Purchase
or Request Quote**

Search Manuals

Enter your information to help us find the right parts manual for your machine.

* Brand:

* Model:

* Serial:

* Part Number:

SEARCH

**Can't Find Part or
Manual? Request Help
by Manufacturer,
Model & Description**

Parts Order Form

Please fill in the following information to help us find the right part for your machine.

Manufacturer:	<input type="text"/>
Model:	<input type="text"/>
Description:	<input type="text"/>
Part Number:	<input type="text"/>
Quantity:	<input type="text"/>
Notes:	<input type="text"/>

Submit

Discount-Equipment.com is your online resource for quality parts & equipment.

Florida: **561-964-4949** Outside Florida TOLL FREE: **877-690-3101**

Need parts?

Click on this link: <http://www.discount-equipment.com/category/5443-parts/> and choose one of the options to help get the right parts and equipment you are looking for. Please have the machine model and serial number available in order to help us get you the correct parts. If you don't find the part on the website or on one of the online manuals, please fill out the request form and one of our experienced staff members will get back to you with a quote for the right part that your machine needs.

We sell worldwide for the brands: Genie, Terex, JLG, MultiQuip, Mikasa, Essick, Whiteman, Mayco, Toro Stone, Diamond Products, Generac Magnum, Airman, Haulotte, Barreto, Power Blanket, Nifty Lift, Atlas Copco, Chicago Pneumatic, Allmand, Miller Curber, Skyjack, Lull, Skytrak, Tsurumi, Husquvarna Target, Stow, Wacker, Sakai, Mi-T-M, Sullair, Basic, Dynapac, MBW, Weber, Bartell, Bennar Newman, Haulotte, Ditch Runner, Menegotti, Morrison, Contec, Buddy, Crown, Edco, Wyco, Bomag, Laymor, EZ Trench, Bil-Jax, F.S. Curtis, Gehl Pavers, Heli, Honda, ICS/PowerGrit, IHI, Partner, Imer, Clipper, MMD, Koshin, Rice, CH&E, General Equipment, Amida, Coleman, NAC, Gradall, Square Shooter, Kent, Stanley, Tamco, Toku, Hatz, Kohler, Robin, Wisconsin, Northrock, Oztec, Toker TK, Rol-Air, APT, Wylie, Ingersoll Rand / Doosan, Innovatech, Con X, Ammann, Mecalac, Makinex, Smith Surface Prep, Small Line, Wanco, Yanmar