



SPARE PARTS LIST

SURFACE PREPARATION EQUIPMENT

PG 820, To machine number 1108-8,
2008-09

Go to Discount-Equipment.com to order your parts



PARTS FINDER

**Search Website
by Part Number**



**Search Manual
Library For Parts
Manual & Lookup Part
Numbers – Purchase
or Request Quote**

Search Manuals

Enter your information to help us find the right parts manual for your machine.

* Brand:

* Model:

* Serial:

* Part Number:

SEARCH

**Can't Find Part or
Manual? Request Help
by Manufacturer,
Model & Description**

Parts Order Form

Please fill in the following information to help us find the right part for your machine.

Manufacturer:	<input type="text"/>
Model:	<input type="text"/>
Description:	<input type="text"/>
Part Number:	<input type="text"/>
Quantity:	<input type="text"/>
Notes:	<input type="text"/>

Submit

Discount-Equipment.com is your online resource for quality parts & equipment.

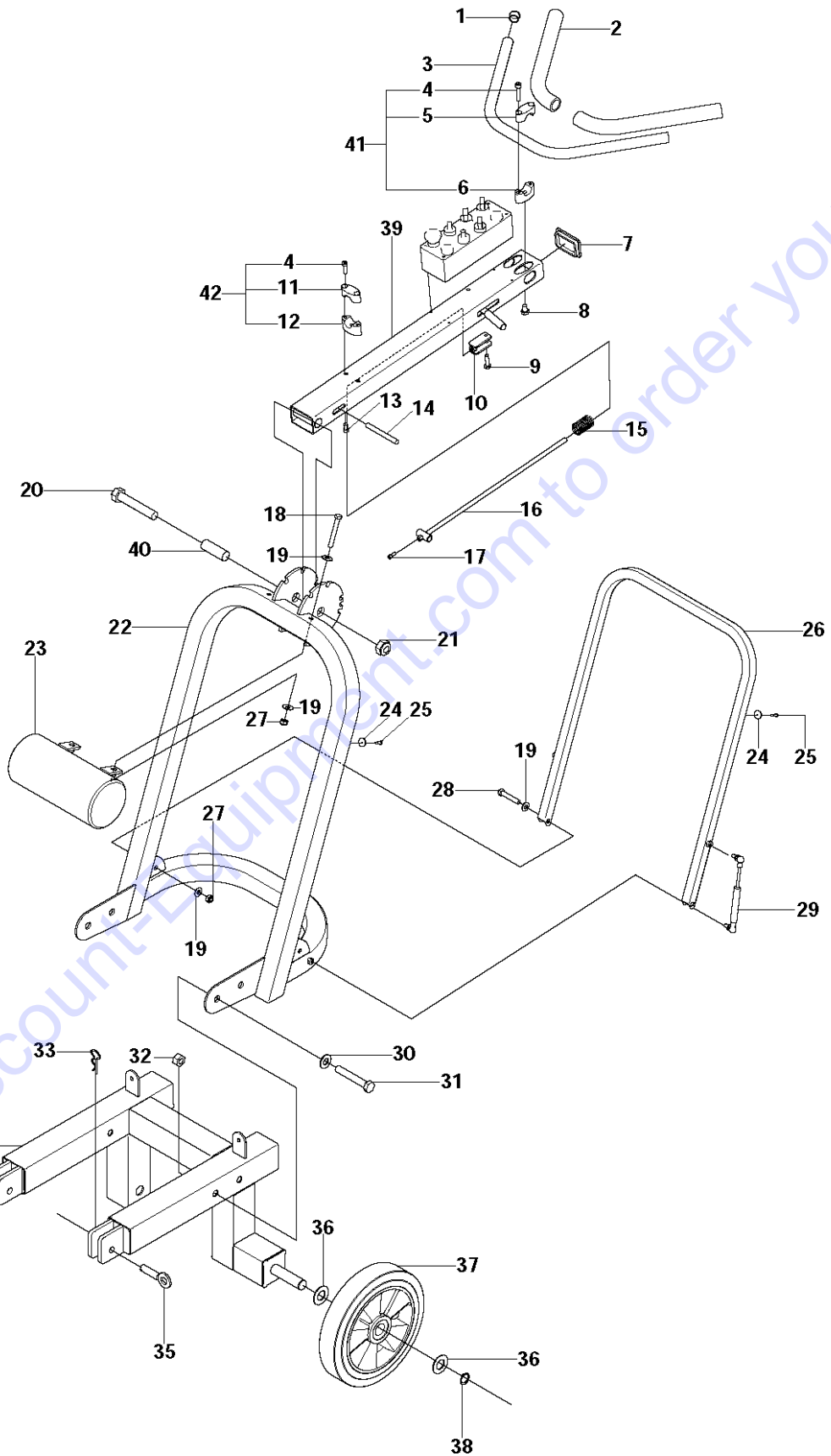
Florida: **561-964-4949** Outside Florida TOLL FREE: **877-690-3101**

Need parts?

Click on this link: <http://www.discount-equipment.com/category/5443-parts/> and choose one of the options to help get the right parts and equipment you are looking for. Please have the machine model and serial number available in order to help us get you the correct parts. If you don't find the part on the website or on one of the online manuals, please fill out the request form and one of our experienced staff members will get back to you with a quote for the right part that your machine needs.

We sell worldwide for the brands: Genie, Terex, JLG, MultiQuip, Mikasa, Essick, Whiteman, Mayco, Toro Stone, Diamond Products, Generac Magnum, Airman, Haulotte, Barreto, Power Blanket, Nifty Lift, Atlas Copco, Chicago Pneumatic, Allmand, Miller Curber, Skyjack, Lull, Skytrak, Tsurumi, Husquvarna Target, Stow, Wacker, Sakai, Mi-T-M, Sullair, Basic, Dynapac, MBW, Weber, Bartell, Bennar Newman, Haulotte, Ditch Runner, Menegotti, Morrison, Contec, Buddy, Crown, Edco, Wyco, Bomag, Laymor, EZ Trench, Bil-Jax, F.S. Curtis, Gehl Pavers, Heli, Honda, ICS/PowerGrit, IHI, Partner, Imer, Clipper, MMD, Koshin, Rice, CH&E, General Equipment, Amida, Coleman, NAC, Gradall, Square Shooter, Kent, Stanley, Tamco, Toku, Hatz, Kohler, Robin, Wisconsin, Northrock, Oztec, Toker TK, Rol-Air, APT, Wylie, Ingersoll Rand / Doosan, Innovatech, Con X, Ammann, Mecalac, Makinex, Smith Surface Prep, Small Line, Wanco, Yanmar

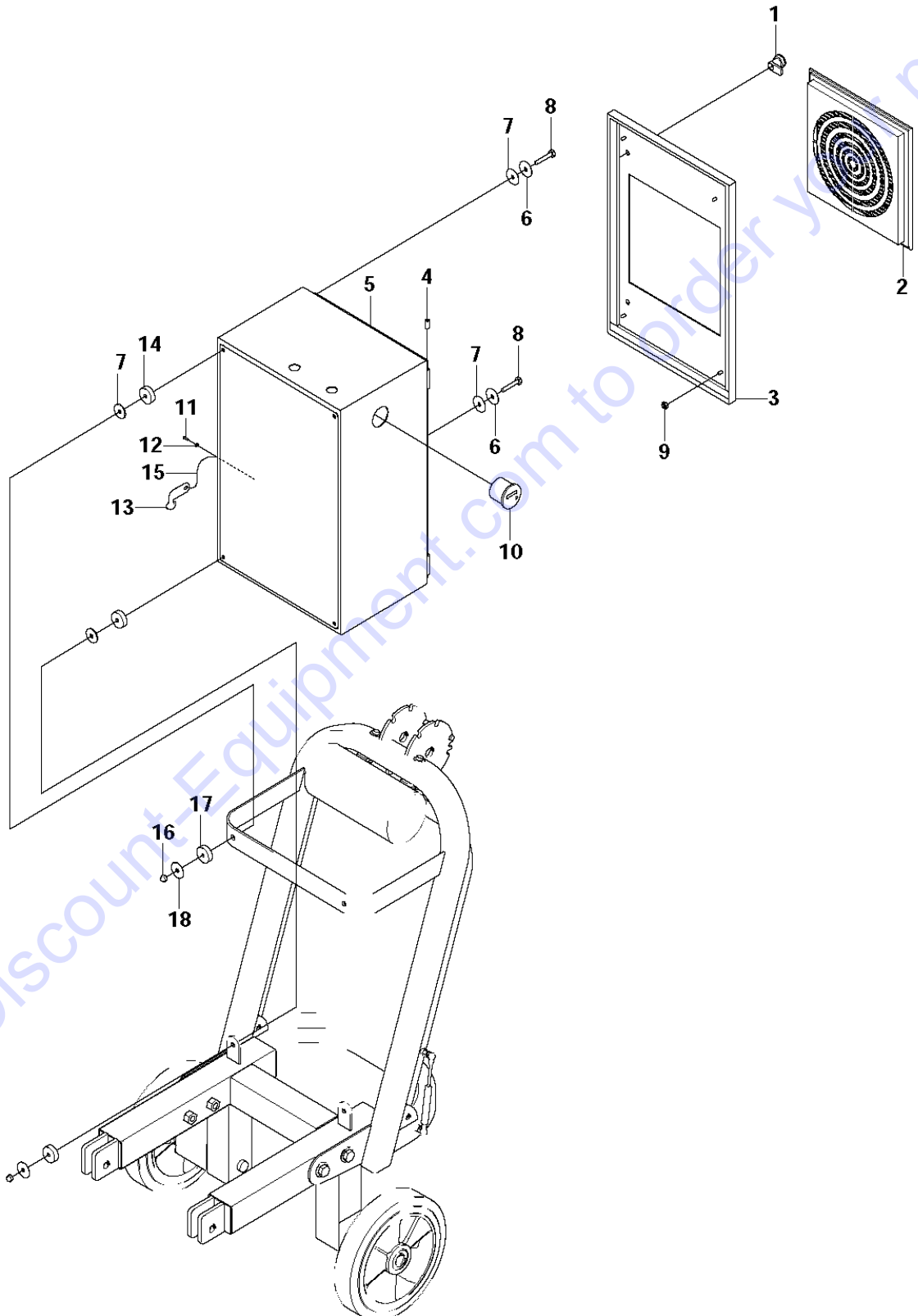
B1



Ref	Part No	Description	Remark	QTY KIT
1	516 05 87-01	HUB CAP		2
2	502 54 49-22	RUBBER COVER		2
3	502 54 49-20	HANDLE TUBE		1
4	521 88 75-01	SCREW		6
5	516 05 88-01	CLAMP		2
6	516 05 89-01	CLAMP		2
7	516 05 90-01	HUB CAP		1
8	725 24 89-71	SCREW EHHM		2
9	725 24 55-76	SCREW EHHM		1
10	502 54 49-05	BRACKET		1
11	516 05 91-01	CLAMP		1
12	516 05 92-01	CLAMP		1
13	725 54 45-01	SCREW IHSCM		2
14	516 05 93-01	PIN		1
15	502 54 49-27	COMPRESSION SPRING		1
16	516 05 95-01	ROD		1
17	725 53 66-01	SCREW IHSCM		1
18	725 25 07-51	SCREW EHHM		2
19	734 11 72-01	WASHER		8
20	504 75 07-01	SCREW		1
21	504 75 06-01	LOCK NUT		1
22	502 54 47-01	CHASSIS		1
23	504 73 04-01	WEIGHT		1
24	516 05 96-01	BUMPER		4
25	521 88 65-01	SCREW		4
26	502 54 47-07	BAR		1
27	732 25 20-01	HEXAGON LOCKING NUT		4
28	725 25 02-51	SCREW EHHM		2
29	502 54 47-11	GAS STRUT		2
30	734 11 86-01	WASHER		4
31	504 75 13-01	SCREW EHHM		4
32	731 23 24-01	HEXAGON NUT		2
33	721 68 02-51	SPRING COTTER		2
34	502 54 48-01	CHASSIS		1
35	504 72 97-01	PIN		2
36	504 75 14-01	WASHER		4
37	502 54 50-01	WHEEL		2
38	735 31 26-00	CIRCLIP		2
39	502 54 49-02	HANDLEBAR ASSY		1
40	516 05 97-01	SLEEVE		1
41	502 54 49-25	HANDLE BAR		2
42	502 54 49-26	HANDLE BAR		1

Go to Discount Equipment.com to order your parts

B2



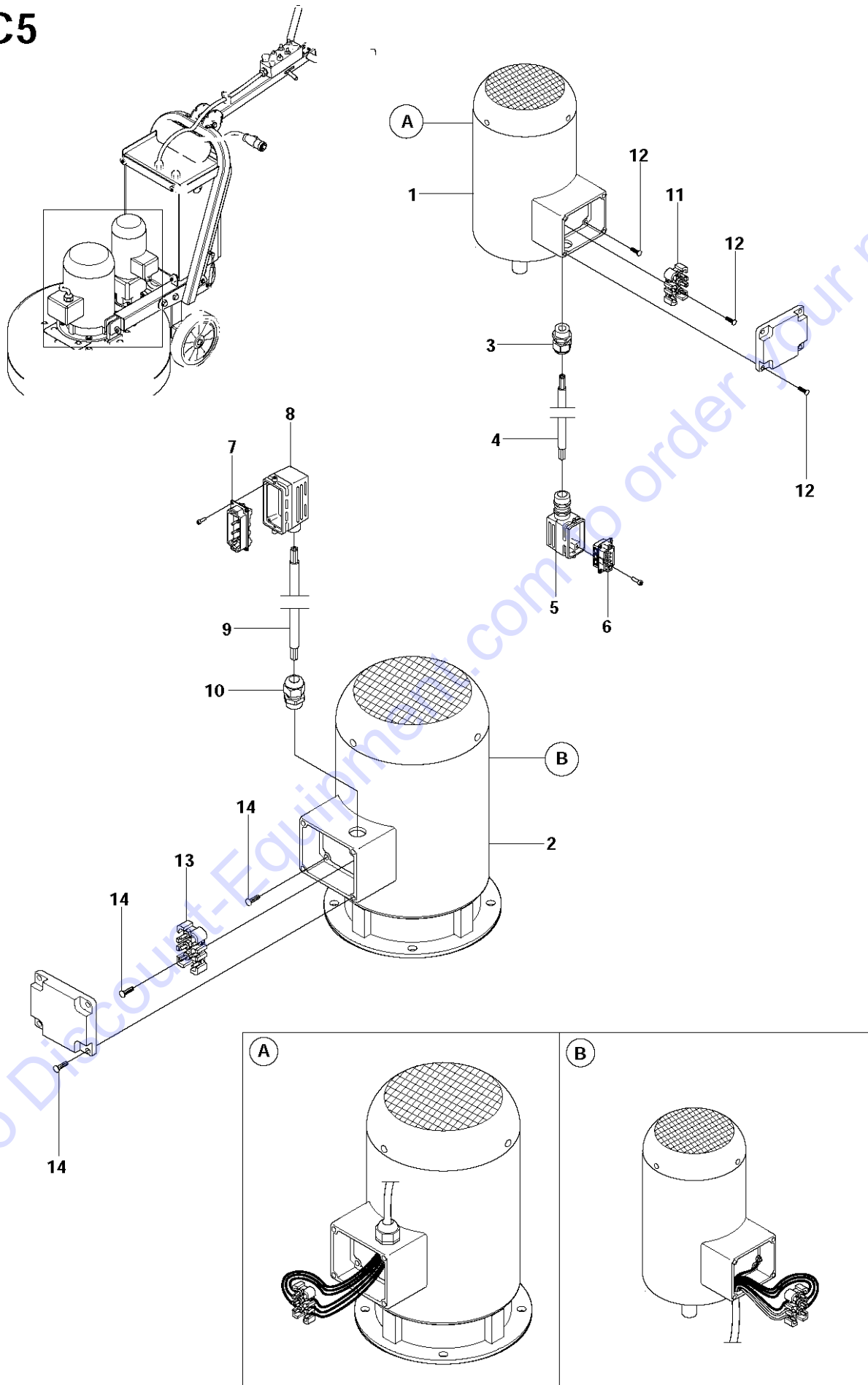
ELECTRICAL BOX EXTERNALS

PG 820, To machine number 1108-8, 2008-09

Ref	Part No	Description	Remark	QTY KIT
1	516 05 98-01	LATCH		2
2	502 54 41-01	VENT KIT		1
3	516 05 99-01	ELECTRIC BOX		1
4	516 06 00-01	PIN		2
5	502 54 43-01	ENCLOSURE		1
6	504 74 73-01	WASHER		4
7	516 06 01-01	WASHER		8
8	725 24 61-76	SCREW EHHM		4
9	732 25 16-01	HEXAGON LOCKING NUT		1
10	504 74 13-01	HOUR METER		1
11	521 88 64-01	SCREW		1
12	734 11 52-01	WASHER		1
13	516 06 02-01	KEY		1
14	502 53 39-01	WASHER		4
15	516 06 03-01	CABLE		1
16	504 75 30-01	FASTENER		4
17	515 98 41-01	WASHER		4
18	521 88 67-01	WASHER		4

Go to Discount-Equipment.com to order your parts

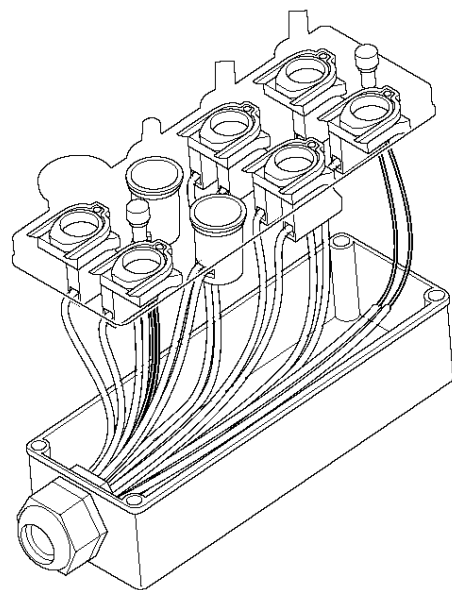
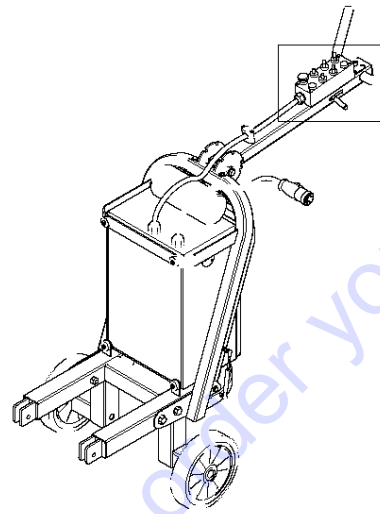
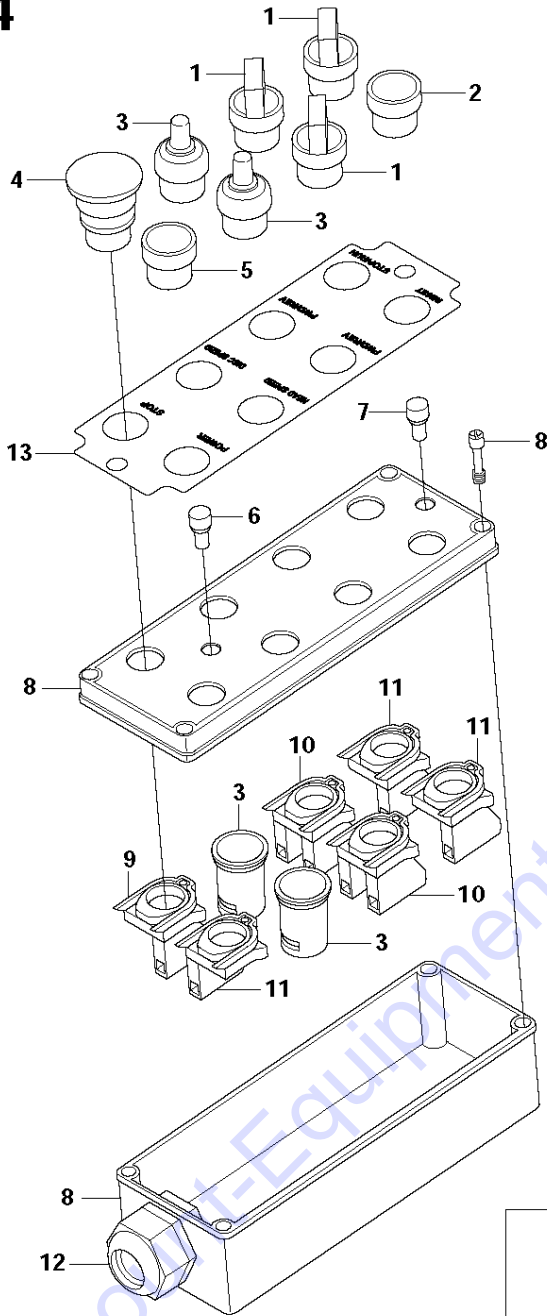
C5



Ref	Part No	Description	Remark	QTY KIT
1	502 53 57-01	ELECTRIC MOTOR		1
2	502 53 52-01	ELECTRIC MOTOR		1
3	516 06 12-01	GROMMET		1
4	504 74 03-01	POWER CABLE		1
5	516 06 13-01	HOOD		1
6	516 06 14-01	CONNECTOR		1
7	516 06 15-01	CONNECTOR		1
8	516 06 16-01	HOOD		1
9	516 06 17-01	CABLE		1
10	516 06 18-01	GROMMET		1
11	516 06 19-01	TERMINAL BLOCK		1
12	521 88 69-01	SCREW		9
13	516 06 20-01	TERMINAL BLOCK		1
14	521 88 70-01	SCREW		9

Go to Discount-Equipment.com to order your parts

C4

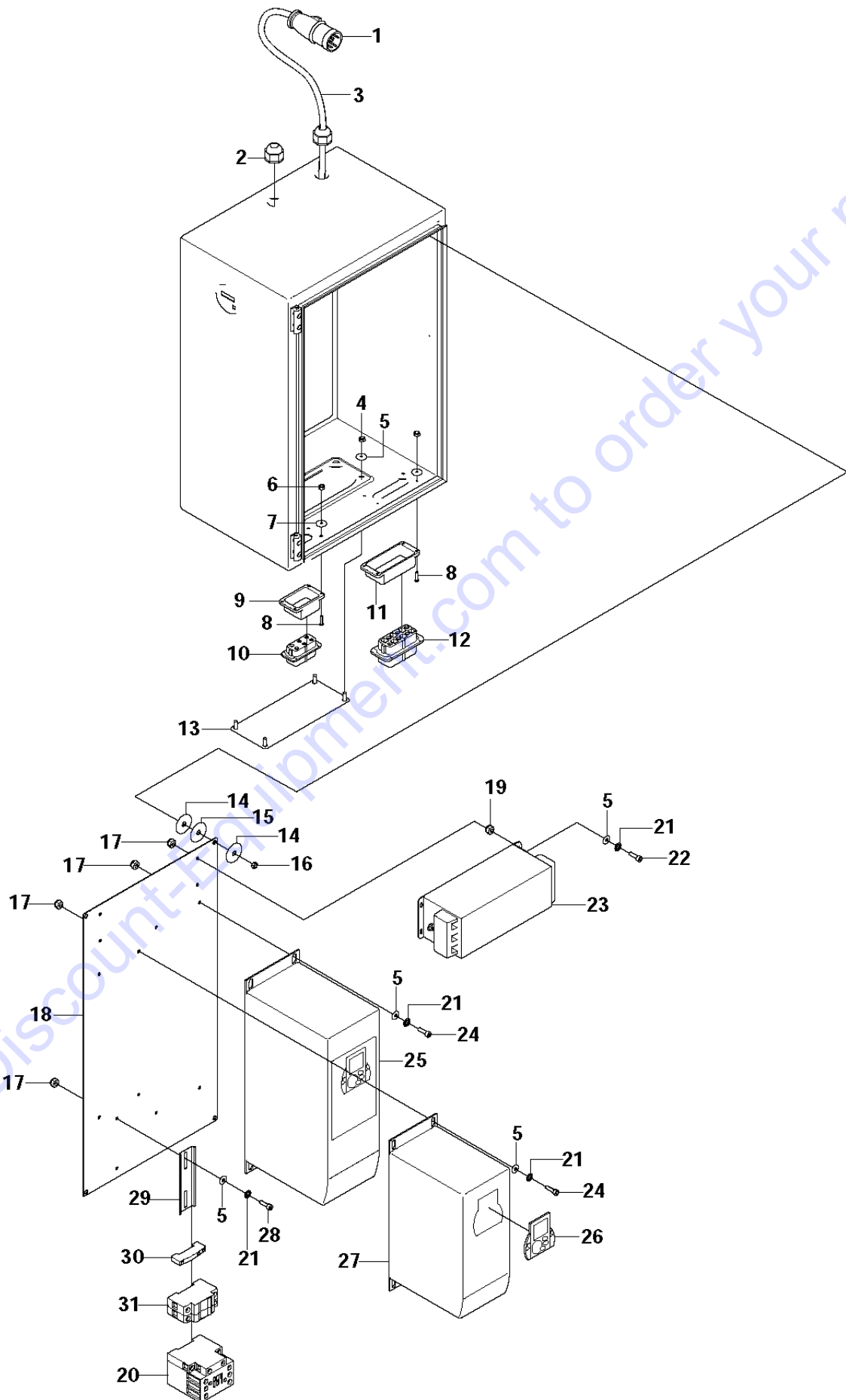


Go to Discount-Equipment.com to order your parts

Ref	Part No	Description	Remark	QTY KIT
1	504 73 86-01	SWITCH		3
2	504 73 88-01	PUSH BUTTON		1
3	502 54 29-01	POTENTIOMETER		2
4	504 73 94-01	BUTTON		1
5	504 73 90-01	PUSH BUTTON		1
6	504 73 97-01	LAMP		1
7	504 73 96-01	LAMP		1
8	502 54 46-01	ELECTRIC BOX		1
9	504 73 95-01	BUTTON BODY		1
10	504 73 87-01	BUTTON BODY		2
11	504 73 89-01	BUTTON BODY		3
12	502 55 51-01	ENCLOSURE		1
13	502 54 33-01	DECAL		1

Go to Discount-Equipment.com to order your parts

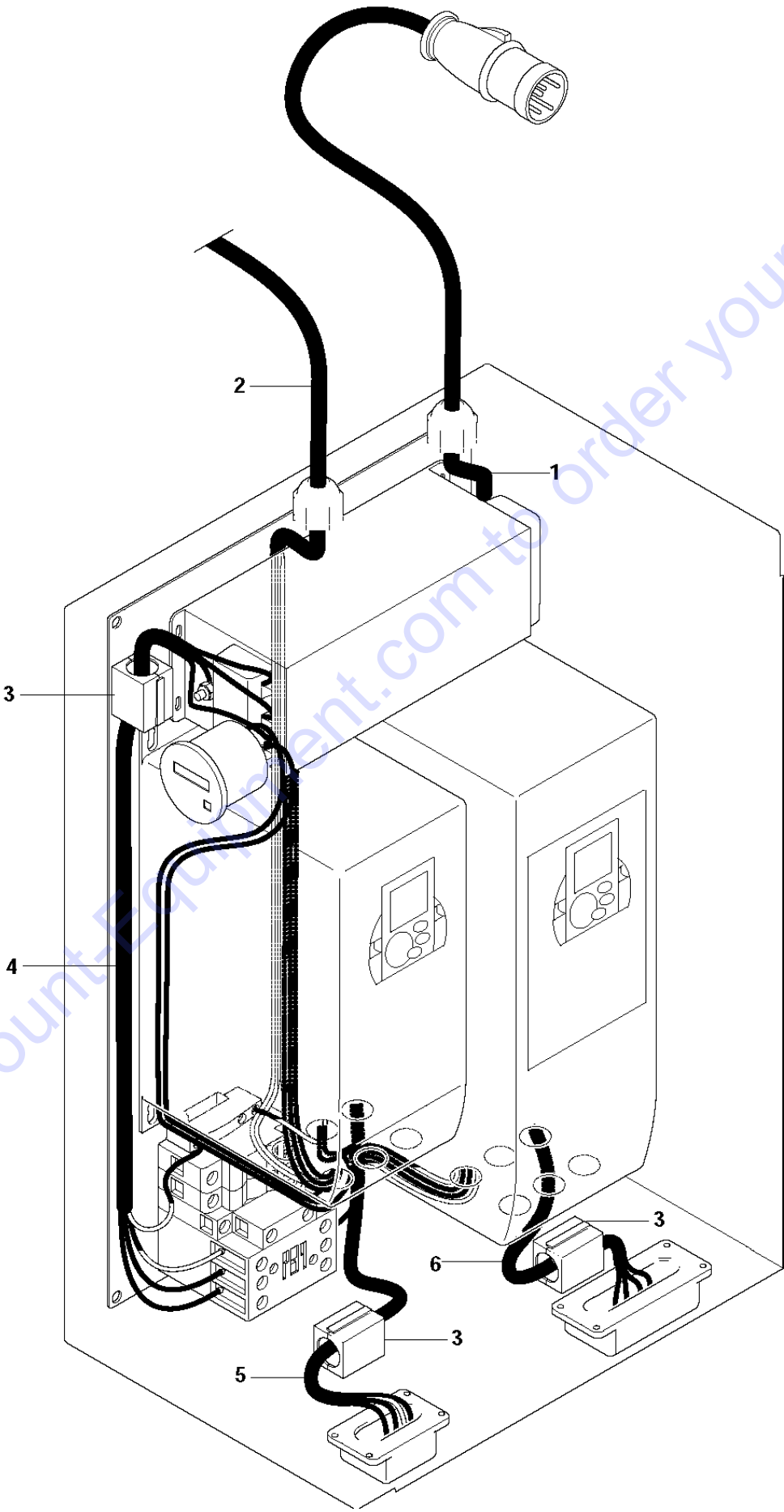
C3



Ref	Part No	Description	Remark	QTY KIT
1a	502 54 40-01	PLUG	32AMP 4 PIN MALE PLUG	1
1b	515 98 55-01	PLUG	AUS (400V)	1
1c	531 11 71-36	PLUG	32AMP 4 PIN MALE PLUG	1
1d	515 98 56-01	PLUG	CAN (600V)	1
2	502 54 39-01	GROMMET	32AMP 5 PIN MALE PLUG	2
3	504 74 02-01	POWER CABLE	EU (400V)	1
4	732 25 16-01	HEXAGON LOCKING NUT	63AMP 4 PIN MALE PLUG	4
5	734 11 52-01	WASHER	JPN/USA (200V)	18
6	732 25 12-01	HEXAGON LOCKING NUT		8
7	734 11 37-41	WASHER		8
8	521 88 74-01	SCREW CRPANM		8
9	516 06 04-01	HOUSING		1
10	516 06 05-01	CONNECTOR		1
11	516 06 06-01	HOUSING		1
12	516 06 07-01	CONNECTOR		1
13	516 06 08-01	PLATE		1
14	504 74 73-01	WASHER		8
15	516 06 01-01	WASHER		4
16	732 25 18-01	HEXAGON LOCKING NUT		4
17	521 88 66-01	RIVET		14
18	516 06 09-01	PLATE		1
19	502 53 40-14	SPACER		8
20	502 54 36-01	CONTACTOR		1
21	735 21 53-01	LOCK WASHER		18
22	521 88 76-01	SCREW		4
23	504 71 71-01	FILTER		1
24	725 53 70-51	SCREW IHSCM		8
25	502 54 25-01	FREQUENCY INVERTER		1
26a	516 06 10-01	PANEL	NXL DISPLAY PANEL	2
26b	505 46 40-01	KEYBOARD	NXS DISPLAY PANEL	2
27	502 54 26-01	FREQUENCY INVERTER		1
28	541 40 51-78	SCREW IH PANM		2
29	516 06 11-01	RAIL		1
30	502 54 38-01	TERMINAL BLOCK		1
31	502 54 37-01	CIRCUIT BREAKER		1

Go to Discount-Equipment.com to order your parts

C2



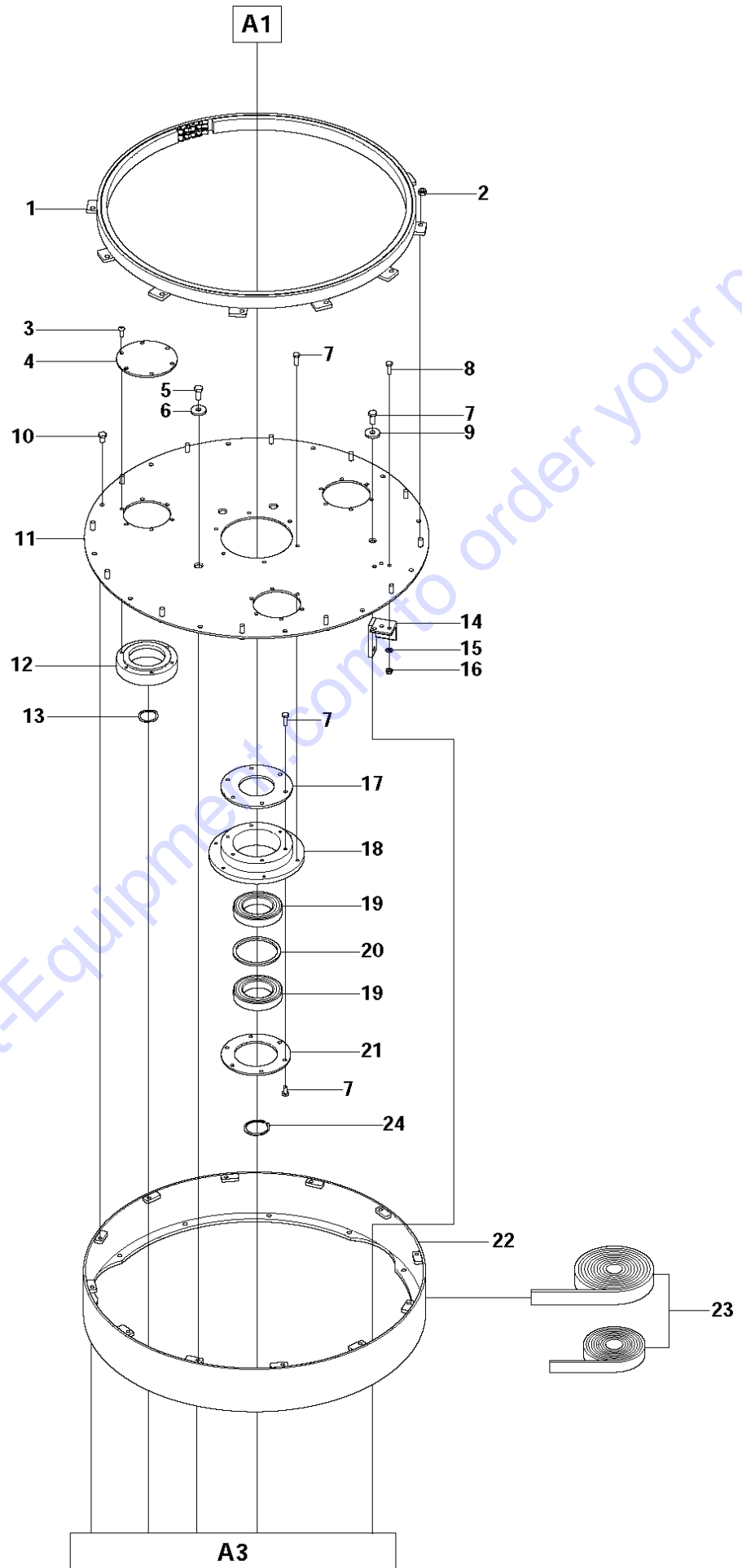
Ref	Part No	Description	Remark	QTY KIT
1	504 74 02-01	POWER CABLE		1
2	502 54 42-01	WIRING		1
3	504 71 72-01	FERRITE		3
4	516 05 77-01	CABLE		1
5	516 05 76-01	CABLE		1
6	516 05 75-01	CABLE		1

Go to Discount-Equipment.com to order your parts

Ref	Part No	Description	Remark	QTY KIT
1	516 05 68-01	COVER		1
2	516 05 70-01	FAN		1
3	516 05 71-01	PIN		1
4	502 53 56-01	GEARBOX		1
5	734 11 63-01	WASHER		10
6	735 11 64-01	SPRING WASHER		8
7	732 25 18-01	HEXAGON LOCKING NUT		10
8	725 24 53-76	SCREW EHHM		6
9	725 24 89-71	SCREW EHHM		4
10	734 11 72-01	WASHER		12
11	502 53 81-01	PLATE		1
12	725 64 55-01	SCREW IHCSFM		4
13	502 54 24-01	DRIVE SPROCKET ASSY		1
14	728 54 51-05	SCREW IHSETM		2
15	725 24 97-71	SCREW EHHM		8
16	502 53 80-01	BRACKET		1
17	725 25 42-71	SCREW EHHM		2
18	504 72 63-04	WASHER		19
19	504 72 63-03	WASHER		5
20	504 72 90-01	LIFTING LUG		2
21	725 25 34-71	SCREW EHHM		13
22	734 11 78-01	WASHER		13
23	504 72 93-01	COVER PLATE		1
24	502 53 85-01	VELCRO		1
25	504 72 98-02	COUPLING		1
26	724 33 70-51	SCREW CRCSFM		3
27	504 72 98-03	BRACKET		1
28	732 25 16-01	HEXAGON LOCKING NUT		3
29	516 05 72-01	COVER		1
30	516 05 73-01	FAN		1
31	516 05 74-01	PIN		1
32	521 88 71-01	SCREW		7
33	502 53 76-01	PLATE		1
34	516 05 78-01	SEAL		1
35	502 53 84-01	COVER		1
36	504 72 98-01	PORT		1
37	516 05 79-01	COVER		1

Go to Discount-Equipment.com to order your parts

A2



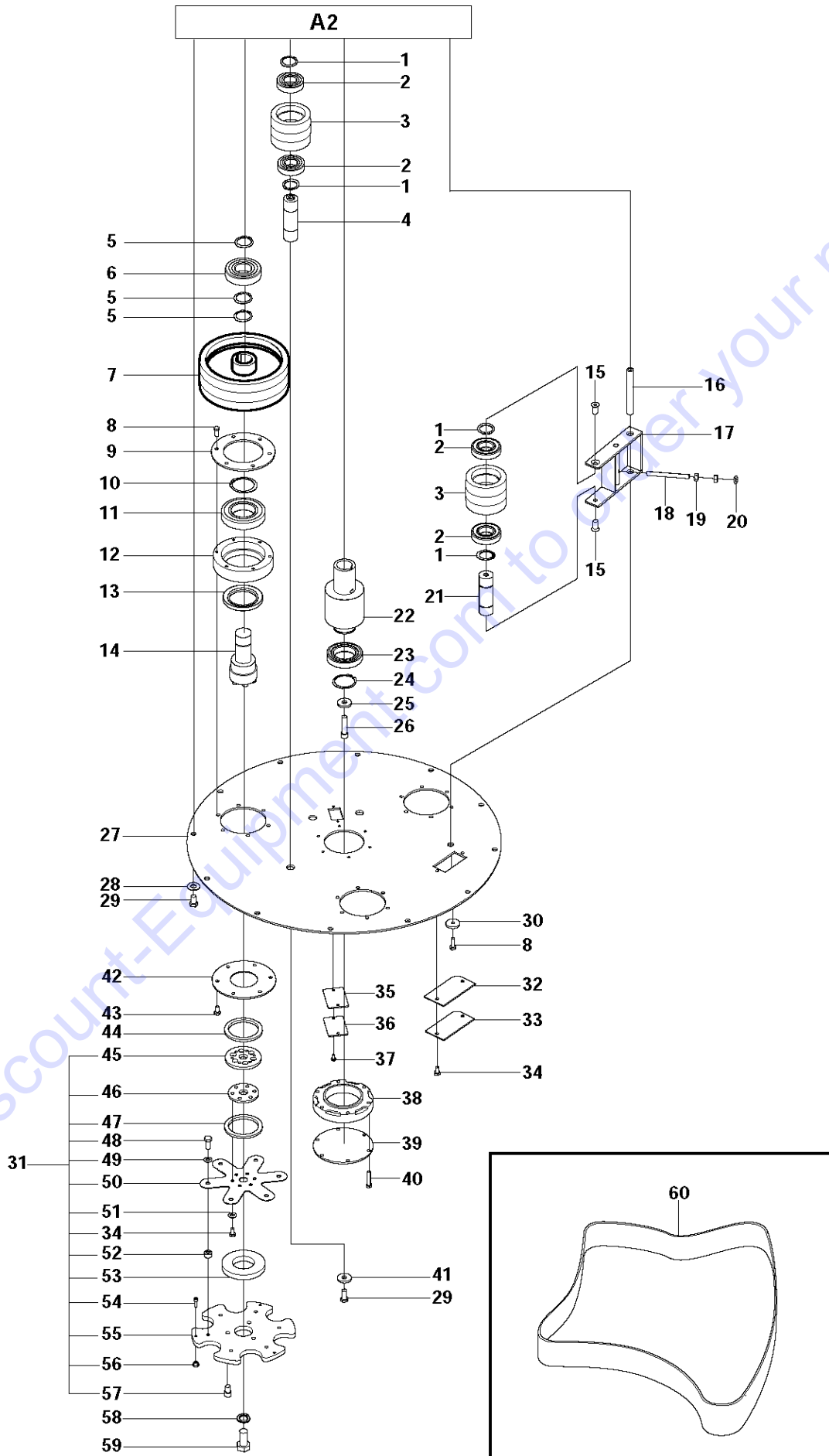
GRINDING HEAD 2

PG 820, To machine number 1108-8, 2008-09

Ref	Part No	Description	Remark	QTY KIT
1	502 53 86-01	CHAIN RING		1
2	732 25 20-01	HEXAGON LOCKING NUT		12
3	504 75 02-01	SCREW IHANM		18
4	502 53 79-01	COVER PLATE		3
5	725 25 32-71	SCREW EHHM		3
6	504 72 95-01	WASHER		3
7	725 24 51-76	SCREW EHHM		19
8	725 24 53-76	SCREW EHHM		3
9	504 74 73-01	WASHER		2
10	725 24 89-71	SCREW EHHM		12
11	502 53 74-01	TOP PLATE		1
12	502 53 71-01	BEARING HOUSING		3
13	502 53 99-01	WAVE WASHER		3
14	504 72 99-01	STRUT		1
15	734 11 63-01	WASHER		3
16	732 25 18-01	HEXAGON LOCKING NUT		3
17	504 72 82-01	PLATE		1
18	502 53 72-01	BEARING HOUSING		1
19	502 53 89-01	BALL BEARING		2
20	504 72 88-01	SPACER		1
21	504 72 81-01	PLATE		1
22	502 53 83-01	RIM		1
23	502 53 48-01	PLANETARY SEAL RUBBER		1
24	502 53 90-01	CIRCLIP		1

Go to Discount-Equipment.com to order your parts

A3



Ref	Part No	Description	Remark	QTY KIT
1	502 53 92-01	CIRCLIP		8
2	502 53 91-01	BALL BEARING		8
3	502 53 68-01	PULLEY		4
4	502 53 67-01	SHAFT		3
5	502 53 94-01	CIRCLIP		9
6	502 53 93-01	BALL BEARING		3
7	502 53 64-01	PULLEY		3
8	725 24 51-76	SCREW EHHM		19
9	502 53 77-01	PLATE		3
10	502 53 96-01	CIRCLIP		3
11	502 53 95-01	BALL BEARING		3
12	502 53 70-01	BEARING HOUSING		3
13	502 53 97-01	RADIAL SEAL		3
14	502 53 66-01	PULLEY SHAFT		3
15	725 64 93-01	SCREW IHCSFM		2
16	516 05 81-01	SHAFT		1
17	502 53 82-01	FRAME		1
18	516 05 82-01	ROD		1
19	731 23 20-01	HEXAGON NUT		2
20	734 11 72-01	WASHER		1
21	502 53 69-01	SHAFT		1
22	502 53 65-01	PULLEY		1
23	502 53 87-01	BALL BEARING		1
24	502 53 88-01	CIRCLIP		1
25	504 72 63-03	WASHER		1
26	504 74 88-01	SCREW IHSCM		1
27	502 53 75-01	BOTTOM PLATE		1
28	734 11 78-01	WASHER		12
29	725 25 32-71	SCREW EHHM		15
30	504 72 86-01	WASHER		1
31	502 53 40-01	SPRING STEEL SYSTEM		3
32	516 05 84-01	SEAL		1
33	504 72 78-01	COVER PLATE		1
34	725 24 49-76	SCREW EHHM		20
35	516 05 85-01	SEAL		1
36	504 72 79-01	COVER PLATE		1
37	725 23 66-71	SCREW EHHM		2
38	502 53 73-01	BEARING HOUSING		1
39	502 53 78-01	COVER PLATE		1
40	725 24 60-51	SCREW EHHM		6
41	504 72 95-01	WASHER		3
42	504 72 80-01	COVER PLATE		3
43	725 24 53-76	SCREW EHHM		18
44	502 53 98-01	SEAL		3
45	502 53 40-06	HUB		3
46	502 53 40-04	SPACER PLATE		3
47	502 53 40-05	RUBBER RING		3
48	725 24 93-76	SCREW EHHM		18
49	734 11 72-01	WASHER		18
51	502 53 42-01	SPRING PLATE		3
52	734 11 63-01	WASHER		18
53	502 53 40-14	SPACER		18
54	502 53 43-01	RING		3
55	725 53 70-51	SCREW IHSCM		9
56	502 53 40-02	PLATE		3
57	502 53 44-01	LOCK		3
58	502 54 23-01	DRIVE BELT		3
59	504 74 84-01	SCREW IHSCM		9
60	504 74 96-03	LOCK WASHER		9
50	504 74 89-01	SCREW EHHM		1

PARTS FINDER

**Search Website
by Part Number**



**Search Manual
Library For Parts
Manual & Lookup Part
Numbers – Purchase
or Request Quote**

Search Manuals

Enter your information to search for a manual or to purchase a manual or parts.

* Brand:

* Model:

* Serial:

* Part Number:

SEARCH

**Can't Find Part or
Manual? Request Help
by Manufacturer,
Model & Description**

Parts Order Form

Please fill in the following information:

Manufacturer:

Model:

Description:

Quantity:

Part Number:

Part Name:

Part Description:

Part Category:

Part Location:

Part Status:

Part Condition:

Part Material:

Part Color:

Part Weight:

Part Dimensions:

Part Price:

Part Notes:

Submit

Discount-Equipment.com is your online resource for quality parts & equipment.

Florida: **561-964-4949** Outside Florida TOLL FREE: **877-690-3101**

Need parts?

Click on this link: <http://www.discount-equipment.com/category/5443-parts/> and choose one of the options to help get the right parts and equipment you are looking for. Please have the machine model and serial number available in order to help us get you the correct parts. If you don't find the part on the website or on one of the online manuals, please fill out the request form and one of our experienced staff members will get back to you with a quote for the right part that your machine needs.

We sell worldwide for the brands: Genie, Terex, JLG, MultiQuip, Mikasa, Essick, Whiteman, Mayco, Toro Stone, Diamond Products, Generac Magnum, Airman, Haulotte, Barreto, Power Blanket, Nifty Lift, Atlas Copco, Chicago Pneumatic, Allmand, Miller Curber, Skyjack, Lull, Skytrak, Tsurumi, Husquvarna Target, Stow, Wacker, Sakai, Mi-T-M, Sullair, Basic, Dynapac, MBW, Weber, Bartell, Bennar Newman, Haulotte, Ditch Runner, Menegotti, Morrison, Contec, Buddy, Crown, Edco, Wyco, Bomag, Laymor, EZ Trench, Bil-Jax, F.S. Curtis, Gehl Pavers, Heli, Honda, ICS/PowerGrit, IHI, Partner, Imer, Clipper, MMD, Koshin, Rice, CH&E, General Equipment, Amida, Coleman, NAC, Gradall, Square Shooter, Kent, Stanley, Tamco, Toku, Hatz, Kohler, Robin, Wisconsin, Northrock, Oztec, Toker TK, Rol-Air, APT, Wylie, Ingersoll Rand / Doosan, Innovatech, Con X, Ammann, Mecalac, Makinex, Smith Surface Prep, Small Line, Wanco, Yanmar