



SPARE PARTS LIST

DEMOLITION ROBOTS

DXR140, Valid for machine 1 and forward,
2013-08

Go to Discount-Equipment.com to order your parts



PARTS FINDER

**Search Website
by Part Number**



**Search Manual
Library For Parts
Manual & Lookup Part
Numbers – Purchase
or Request Quote**

Search Manuals

Enter your information to help us find the right parts manual for your machine.

* Brand:

* Model:

* Serial:

* Part Number:

SEARCH

**Can't Find Part or
Manual? Request Help
by Manufacturer,
Model & Description**

Parts Order Form

Please fill in the following information to help us find the right part for your machine.

Manufacturer:	<input type="text"/>
Model:	<input type="text"/>
Description:	<input type="text"/>
Part Number:	<input type="text"/>
Quantity:	<input type="text"/>
Notes:	<input type="text"/>

Submit

Discount-Equipment.com is your online resource for quality parts & equipment.

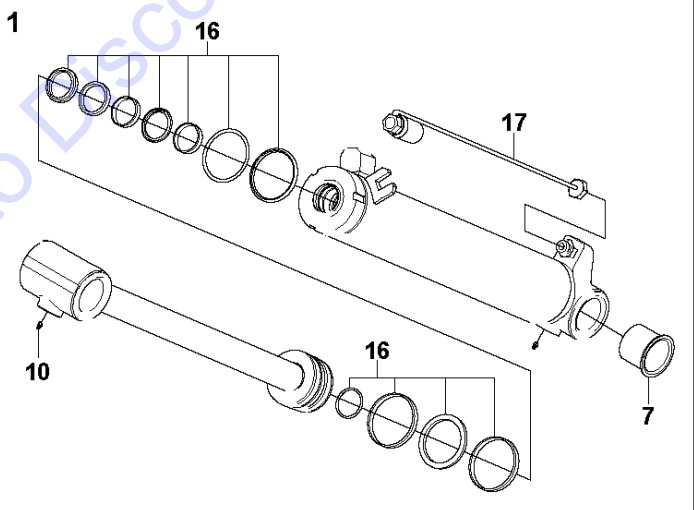
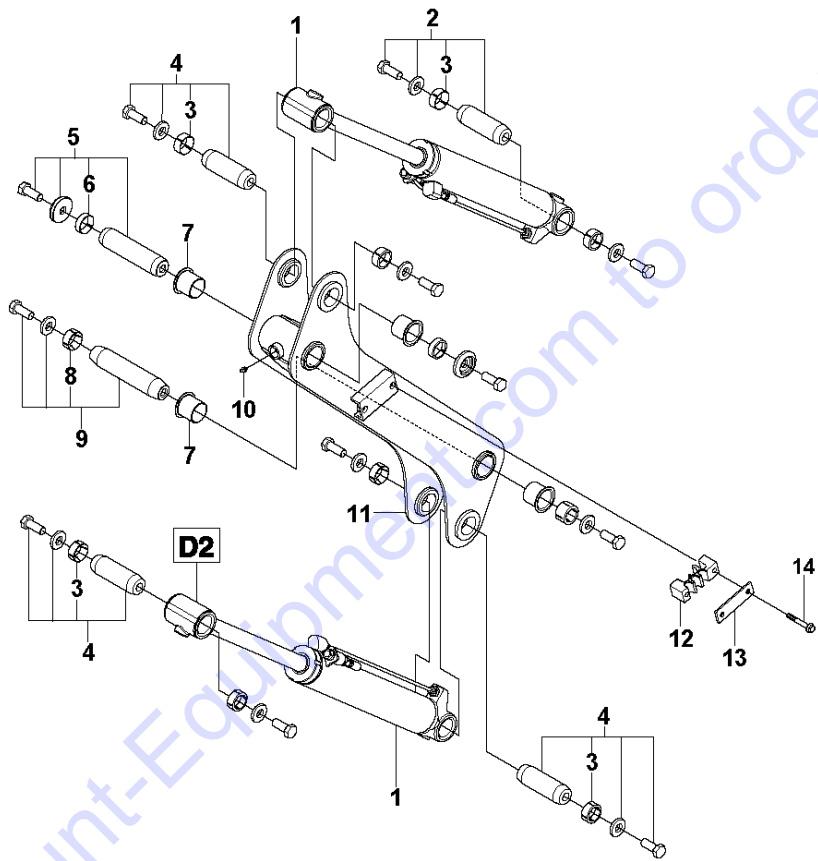
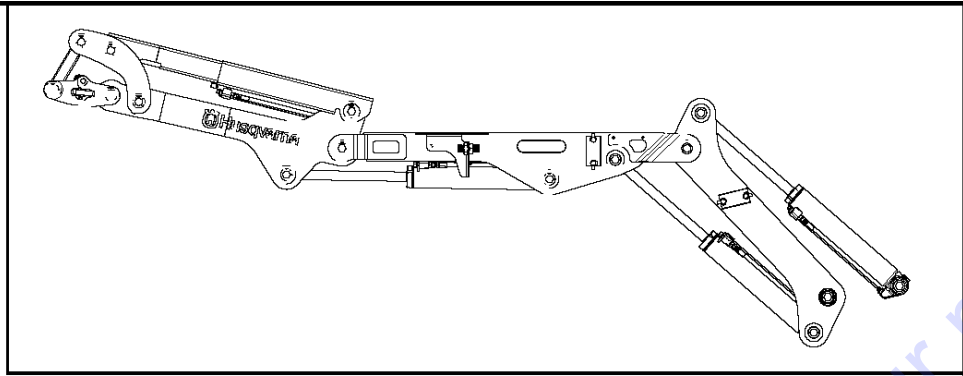
Florida: **561-964-4949** Outside Florida TOLL FREE: **877-690-3101**

Need parts?

Click on this link: <http://www.discount-equipment.com/category/5443-parts/> and choose one of the options to help get the right parts and equipment you are looking for. Please have the machine model and serial number available in order to help us get you the correct parts. If you don't find the part on the website or on one of the online manuals, please fill out the request form and one of our experienced staff members will get back to you with a quote for the right part that your machine needs.

We sell worldwide for the brands: Genie, Terex, JLG, MultiQuip, Mikasa, Essick, Whiteman, Mayco, Toro Stone, Diamond Products, Generac Magnum, Airman, Haulotte, Barreto, Power Blanket, Nifty Lift, Atlas Copco, Chicago Pneumatic, Allmand, Miller Curber, Skyjack, Lull, Skytrak, Tsurumi, Husquvarna Target, Stow, Wacker, Sakai, Mi-T-M, Sullair, Basic, Dynapac, MBW, Weber, Bartell, Bennar Newman, Haulotte, Ditch Runner, Menegotti, Morrison, Contec, Buddy, Crown, Edco, Wyco, Bomag, Laymor, EZ Trench, Bil-Jax, F.S. Curtis, Gehl Pavers, Heli, Honda, ICS/PowerGrit, IHI, Partner, Imer, Clipper, MMD, Koshin, Rice, CH&E, General Equipment, Amida, Coleman, NAC, Gradall, Square Shooter, Kent, Stanley, Tamco, Toku, Hatz, Kohler, Robin, Wisconsin, Northrock, Oztec, Toker TK, Rol-Air, APT, Wylie, Ingersoll Rand / Doosan, Innovatech, Con X, Ammann, Mecalac, Makinex, Smith Surface Prep, Small Line, Wanco, Yanmar

D1 DXR 140



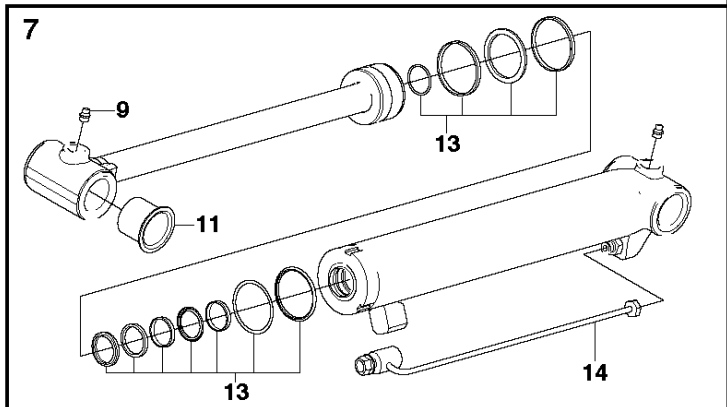
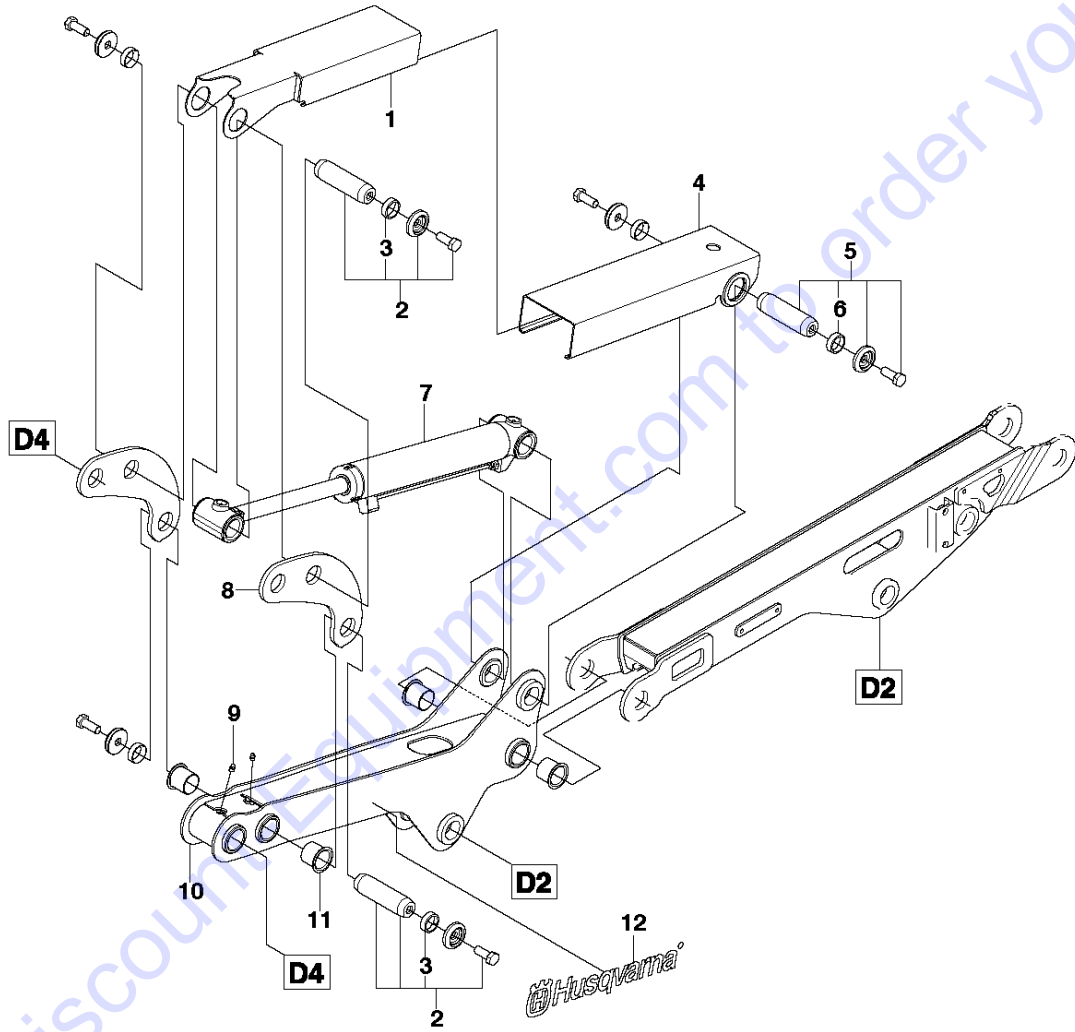
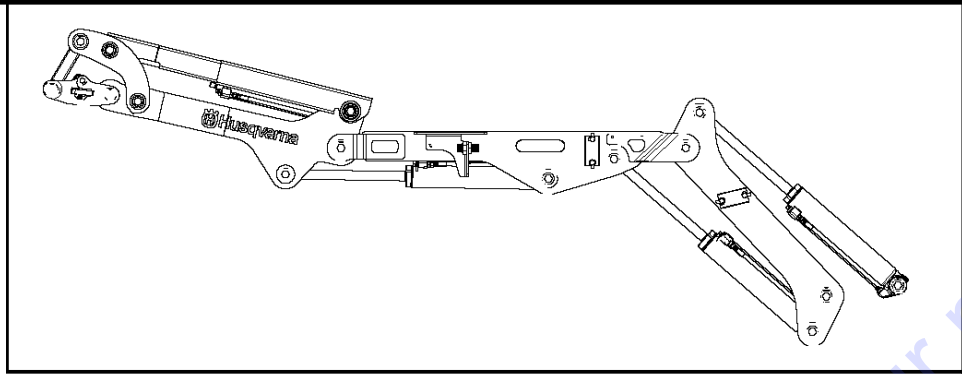
ARM ONE

DXR140, Valid for machine 1 and forward, 2013-08

Ref	Part No	Description	Remark	QTY	KIT
1	525 57 13-01	CYLINDER		2	
2	525 76 32-01	SHAFT		1	
3	522 84 12-01	SLEEVE		6	2,4
4	525 76 22-01	SHAFT		3	
5	525 76 06-01	SHAFT		1	
6	522 84 11-01	SLEEVE		2	5
7	505 25 08-01	BEARING BUSH		12	1,11
8	522 84 15-01	SLEEVE		4	9
9	525 76 39-01	SHAFT		1	
10	504 89 53-01	LUBRICATION NIPPLE		6	1,11
11	525 43 03-01	ARM		1	
12	588 89 95-01	HOSE CLAMP		2	
13	588 90 10-01	PLATE		2	
14	725 25 03-55	SCREW EHHM		4	
16	576 45 42-01	SEAL		2	1
17	576 45 43-01	HYDRAULIC PIPE		2	1

Go to Discount-Equipment.com to order your parts

D3 DXR 140

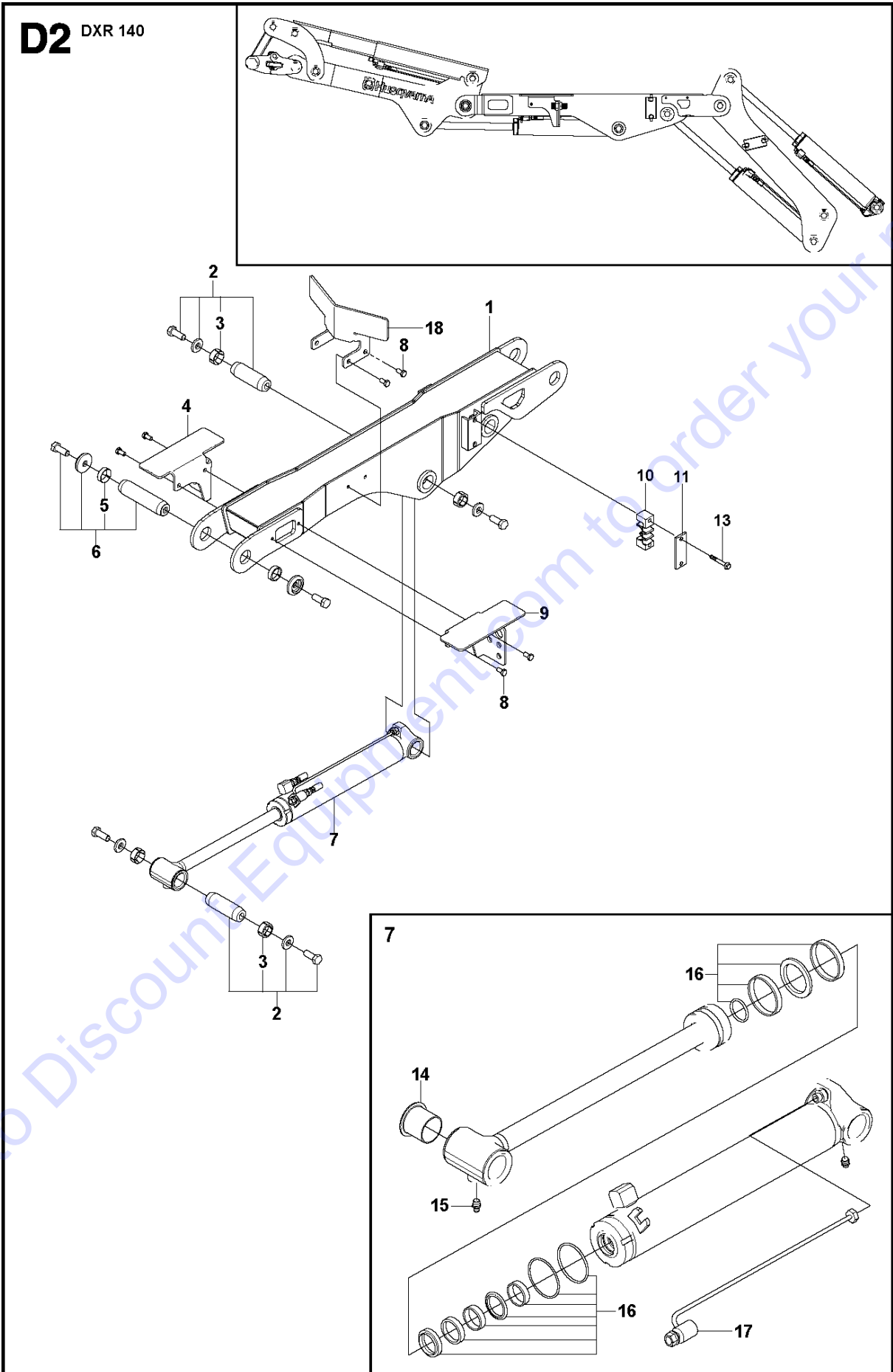


ARM THREE

DXR140, Valid for machine 1 and forward, 2013-08

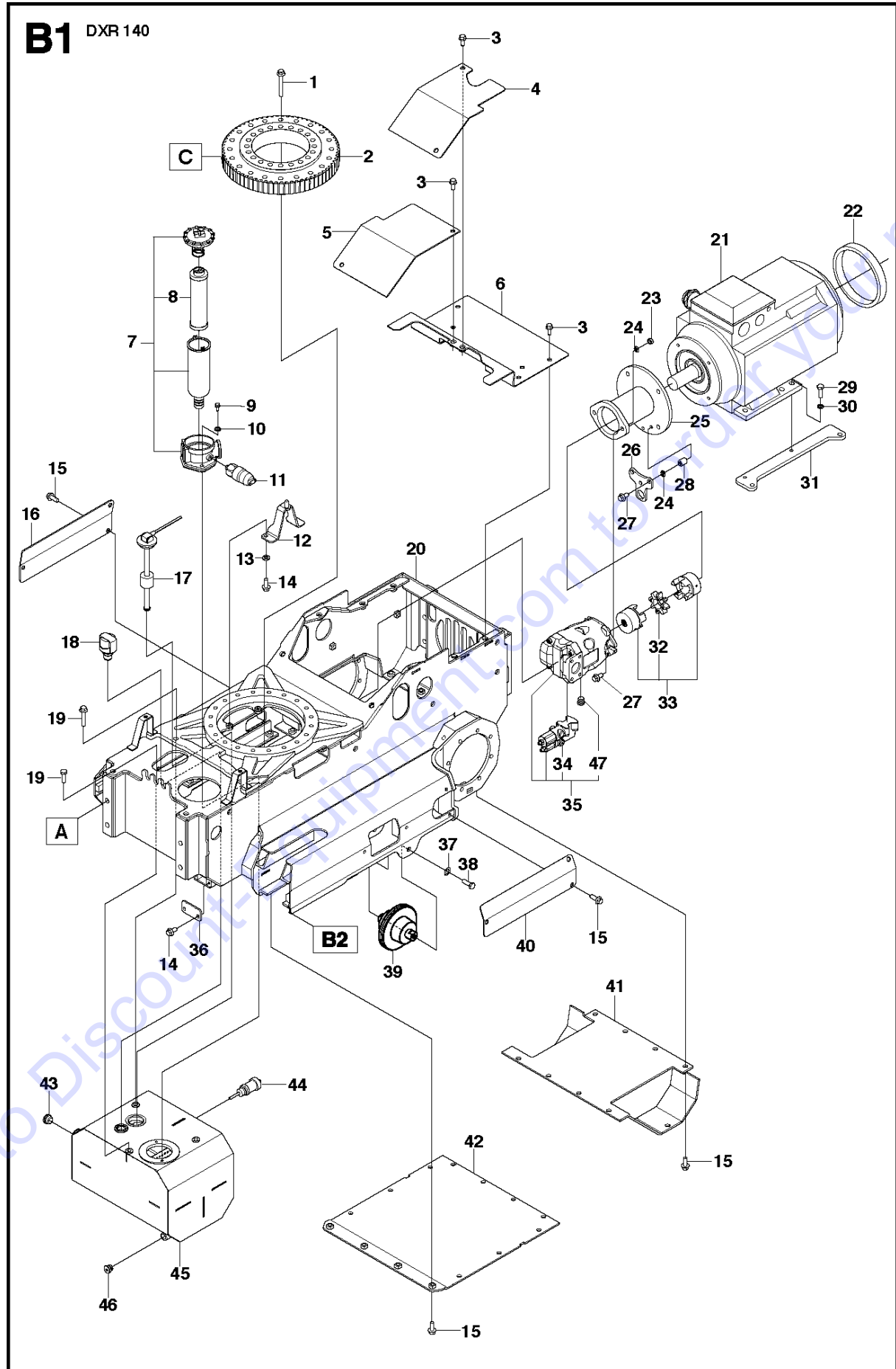
Ref	Part No	Description	Remark	QTY	KIT
1	582 65 28-01	PROTECTION		1	
2	525 76 27-01	SHAFT		2	
3	522 84 11-01	SLEEVE		4	2
4	582 65 30-01	PROTECTION		1	
5	525 75 98-01	SHAFT		1	
6	522 84 13-01	SLEEVE		2	5
7	525 57 13-01	CYLINDER		1	
8	525 47 66-01	PLATE		2	
9	504 89 53-01	LUBRICATION NIPPLE		5	
10	525 45 74-01	ARM		1	
11	505 25 08-01	BEARING BUSH		8	10
12	525 75 39-02	STICKER		1	
13	576 45 42-01	SEAL		1	7
14	576 45 43-01	HYDRAULIC PIPE		1	7

Go to Discount-Equipment.com to order your parts



Ref	Part No	Description	Remark	QTY	KIT
1	525 44 08-01	ARM		1	
2	525 76 22-01	SHAFT		2	
3	522 84 12-01	SLEEVE		4	2
4	580 28 39-01	COVER		1	
5	522 84 11-01	SLEEVE		2	6
6	525 76 06-01	SHAFT		1	
7	525 57 13-01	CYLINDER		1	
8	574 25 89-01	SCREW EHHFM		4	
9	580 28 38-01	COVER		1	
10	588 89 95-01	HOSE CLAMP		2	
11	588 90 10-01	PLATE		2	
13	725 25 03-55	SCREW EHHM		4	
14	505 25 08-01	BEARING BUSH		4	7
15	504 89 53-01	LUBRICATION NIPPLE		2	7
16	576 45 42-01	SEAL		1	7
17	576 45 43-01	HYDRAULIC PIPE		1	7
18	581 87 88-01	PLATE		1	

Go to Discount-Equipment.com to order your parts



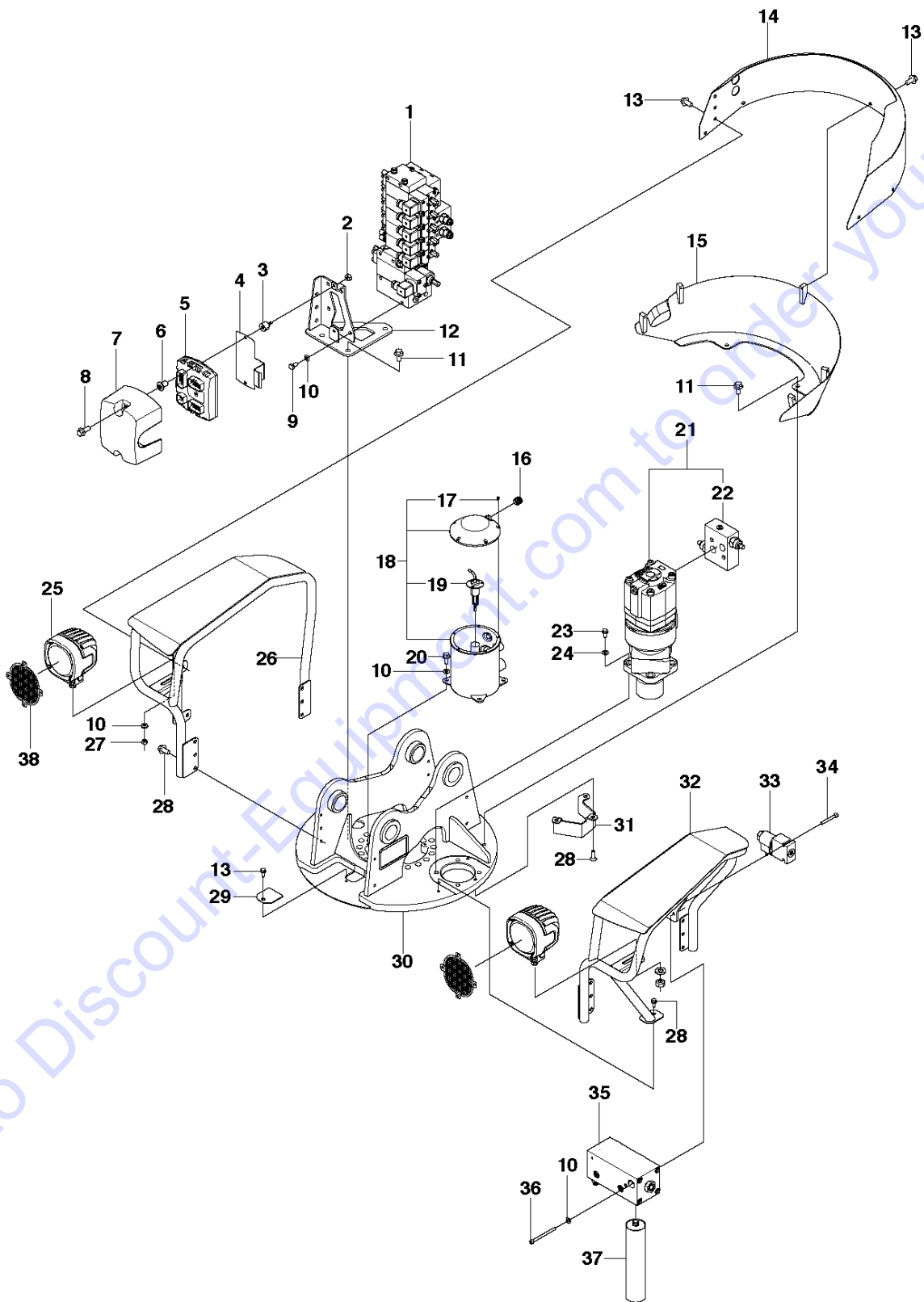
BASE PLATE

DXR140, Valid for machine 1 and forward, 2013-08

Ref	Part No	Description	Remark	QTY	KIT
1	575 28 66-01	SCREW EHHM		20	
2	525 75 61-01	BEARING		1	
3	574 25 89-01	SCREW EHHFM		6	
4	529 29 22-01	COVER		1	
5	574 62 31-01	COVER		1	
6	529 29 15-01	COVER		1	
7	576 38 86-01	KIT		1	
8	573 95 16-01	FILTER		1	
9	725 54 53-01	SCREW IHSCM		2	
10	502 40 71-03	WASHER		2	
11	510 14 17-01	SWITCH		1	
12	529 27 80-01	BRACKET		1	
13	576 74 41-01	WASHER		2	
14	522 66 87-01	SCREW EHHFM		2	
15	522 70 66-01	SCREW EHHFM		14	
16	575 43 69-01	COVER		1	
17	573 95 18-01	LEVEL GLASS		1	
18	505 29 06-01	AIR FILTER		1	
19	575 65 09-01	SCREW EHHFM		3	
20	583 96 43-01	MAIN BODY	Valid for machine S/N 1-254	1	
20	579 67 34-01	MAIN BODY	Valid for machine S/N 255-forward	1	
21	587 97 78-01	MOTOR	15 kW	1	
22	575 85 05-02	SEALING STRIP		1	
23	522 66 95-01	LOCK NUT		2	
24	522 67 17-01	WASHER		4	
25	574 71 34-01	BRACKET		1	
26	574 71 71-01	BRACKET		1	
27	574 25 11-01	SCREW EHHFM		9	
28	522 51 65-01	SLEEVE		2	
29	725 24 95-76	SCREW EHHM		4	
30	522 44 98-01	WASHER		4	
31	529 31 72-01	BRACKET		2	
32	525 75 50-01	COUPLING		1	
33	525 75 41-01	COUPLING		1	
34	576 37 89-01	REGULATOR		1	
35	525 75 53-01	HYDRAULIC PUMP		1	
36	575 84 94-01	COVER		1	
37	510 24 36-01	WASHER		4	
38	574 25 59-01	SCREW EHHM		4	
39	525 80 08-01	SUPPORT ROLLER	Valid for machine S/N 1-128	1	
39	505 26 86-01	SUPPORT ROLLER	Valid for machine S/N 129-forward	1	
40	575 42 63-01	COVER	Valid for machine S/N 1-128	1	
40	583 95 83-01	COVER	Valid for machine S/N 129-forward	1	
41	529 28 64-01	PLATE		1	
42	529 28 99-01	PLATE		1	
43	574 71 40-01	INDICATOR		1	
44	510 19 58-02	GAUGE		1	
45	525 51 19-01	HYDRAULIC TANK		1	
46	589 02 17-01	PLUG		1	
47	578 39 18-01	PLUG	60 Hz	1	35

Go to Discount Equipment.com to Order your parts

C1 DXR 140



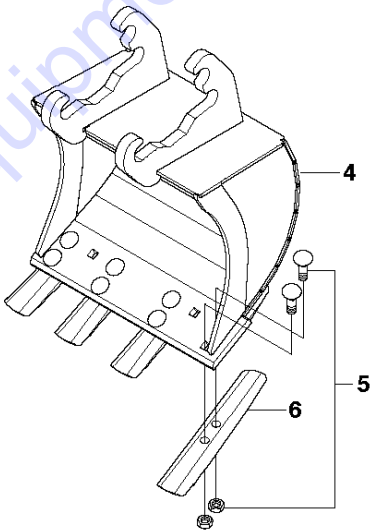
BASE PLATE

DXR140, Valid for machine 1 and forward, 2013-08

Ref	Part No	Description	Remark	QTY KIT
1	585 45 09-01	BLOCK		1
2	576 15 67-01	NUT		2
3	575 72 78-01	DAMPER		2
4	574 70 14-01	BRACKET		1
5	576 73 75-02	ELECTRONIC BOX		1
6	574 70 15-01	SCREW		2
7	574 66 49-01	PROTECTION		1
8	522 66 86-01	SCREW EHHFM		2
9	522 66 78-01	SCREW EHHM		2
10	734 11 63-01	WASHER		10
11	522 70 66-01	SCREW EHHFM		5
12	525 85 98-01	CONSOLE		1
13	522 66 84-01	SCREW EHHFM		1
14	576 34 29-01	COVER		1
15	576 34 42-01	COVER		1
16	576 67 61-01	CABLE		1
17	576 67 60-01	SCREW IHSCM		5
18	579 65 31-01	SWIVEL		1
19	576 67 59-01	SWIVEL		1
20	725 54 53-01	SCREW IHSCM		4
21	579 42 83-01	SLEWING DRIVE		1
22	576 37 93-01	VALVE		1
23	510 24 12-01	SCREW IHSCM		4
24	510 24 36-01	WASHER		4
25	588 12 61-01	LIGHT		2
25	573 96 49-01	HEADLIGHT		1
26	588 11 04-01	FRAME		1
27	522 66 94-01	LOCK NUT		2
28	522 70 71-02	SCREW EHHFM		13
29	576 43 49-01	COVER		1
30	525 84 61-01	BASEPLATE		1
31	575 81 45-01	PROTECTION		1
32	588 15 98-01	FRAME		1
33	522 74 00-01	CONTROL VALVE		1
34	503 20 00-33	SCREW EHHFM		2
35	505 27 78-01	PUMP		1
36	576 15 49-01	SCREW		2
37	521 91 77-01	GREASE		1
38	588 90 38-01	LENS	For old work light, 573 96 49-01	1
38	588 90 36-01	LENS	For new work light, 588 12 61-01	1

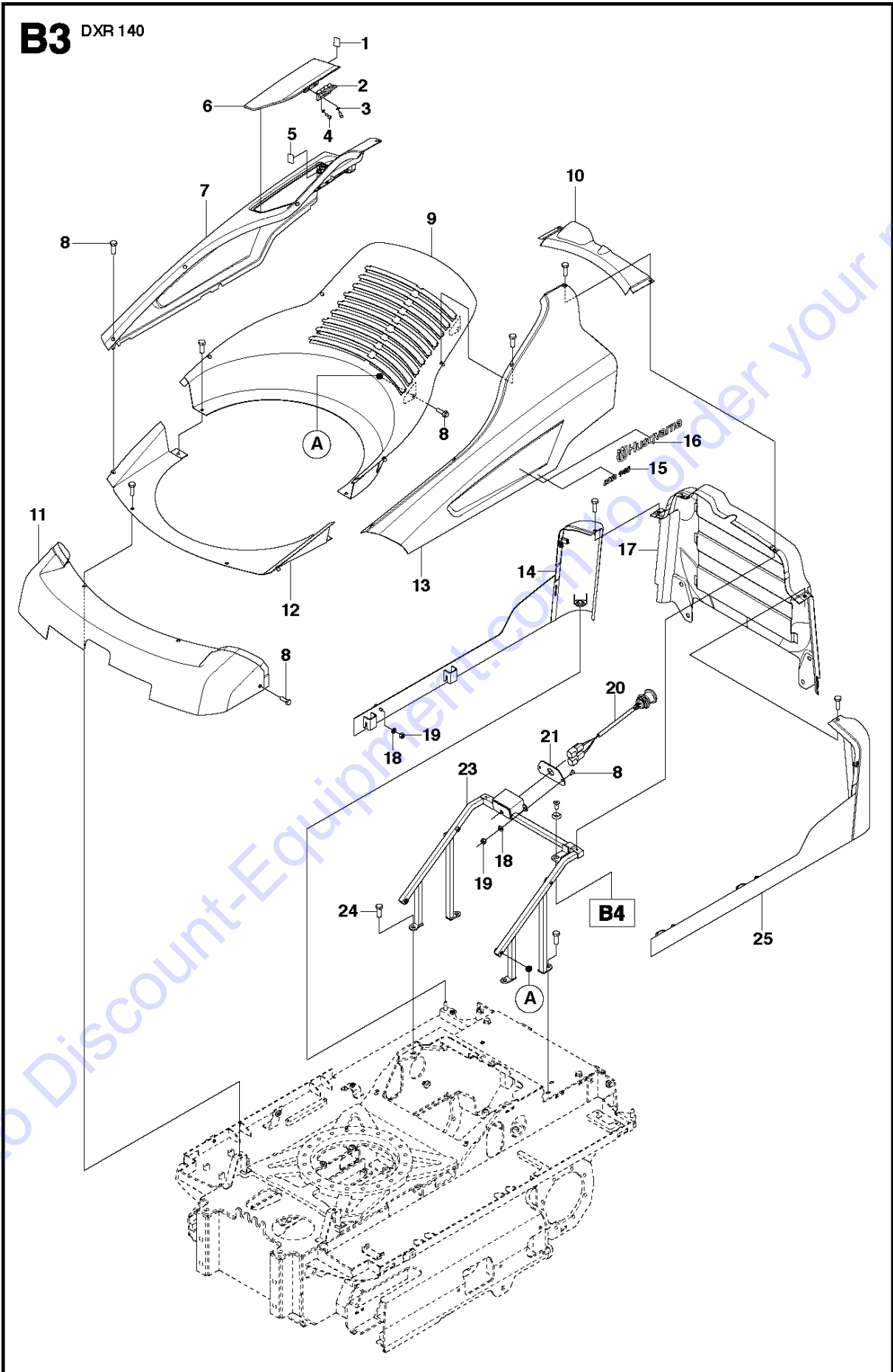
Go to Discount-Equipment.com to order your parts

H DXR 140



Ref	Part No	Description	Remark	QTY KIT
4	575 35 83-01	TOOL		1
5	576 70 34-01	KIT		2
6	576 70 33-01	TOOTH		1

Go to Discount-Equipment.com to order your parts



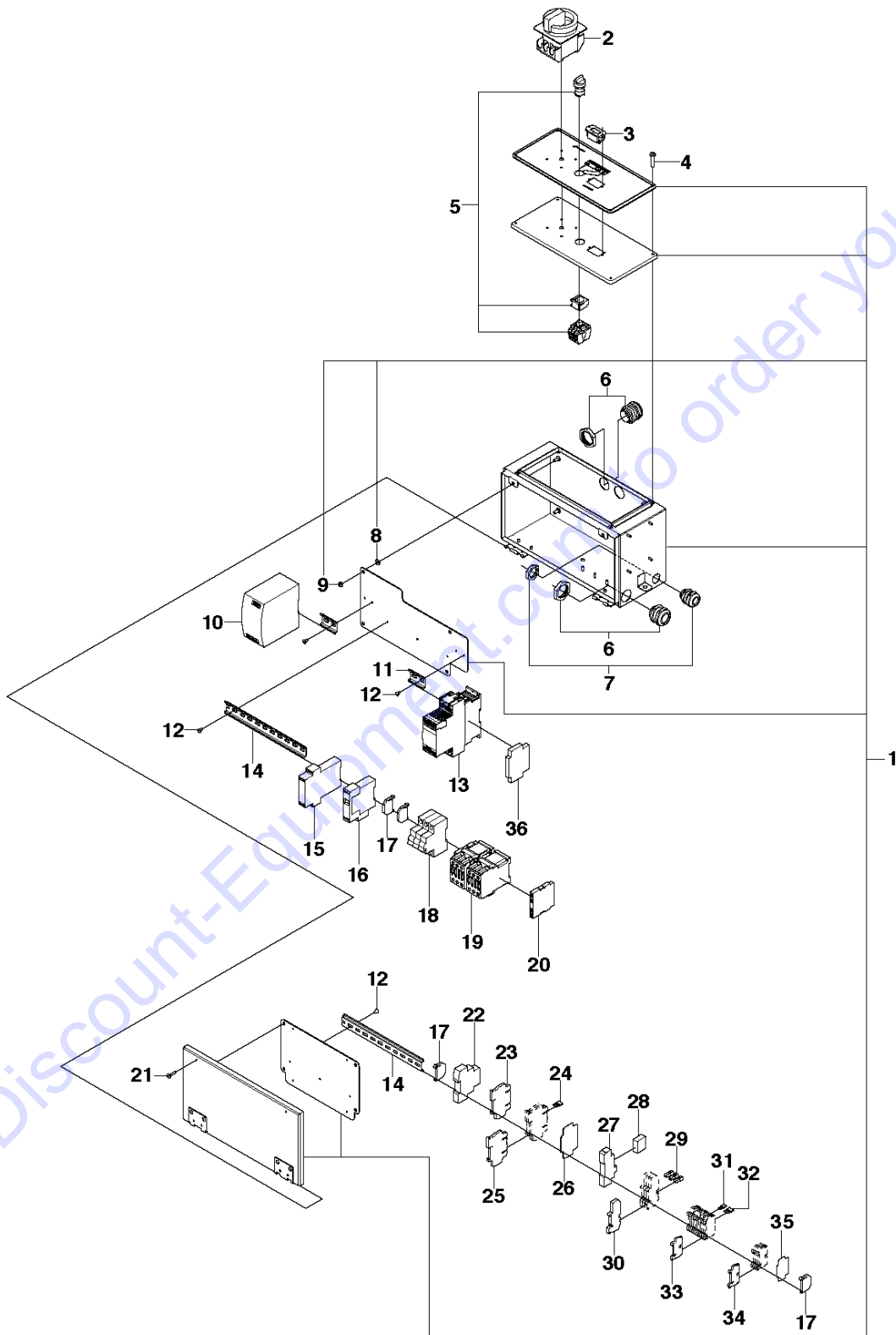
COVER

DXR140, Valid for machine 1 and forward, 2013-08

Ref	Part No	Description	Remark	QTY KIT
1	575 78 31-01	LATCH		1
2	510 36 21-01	HINGE		1
3	576 41 78-01	WASHER		4
4	725 53 27-01	SCREW IHSCM		4
5	574 71 62-01	MAGNET		1
6	574 62 63-01	COVER		1
7	574 52 49-01	COVER		1
8	522 66 86-01	SCREW EHHFM		14
9	577 02 80-01	COVER		1
10	574 52 90-01	COVER		1
11	574 53 15-01	COVER		1
12	577 01 74-01	COVER		1
13	574 56 28-01	COVER		1
14	574 52 35-01	COVER		1
15	575 34 82-01	STICKER		1
16	525 75 39-03	STICKER		1
17	574 52 91-01	COVER		1
18	522 67 15-01	WASHER		8
19	522 66 93-02	LOCK NUT		10
20	584 85 16-01	SWITCH		1
21	574 68 37-01	LID		1
23	574 65 12-01	BRACKET		1
24	574 25 11-01	SCREW EHHFM		4
25	574 56 24-01	COVER		1

Go to Discount-Equipment.com to order your parts

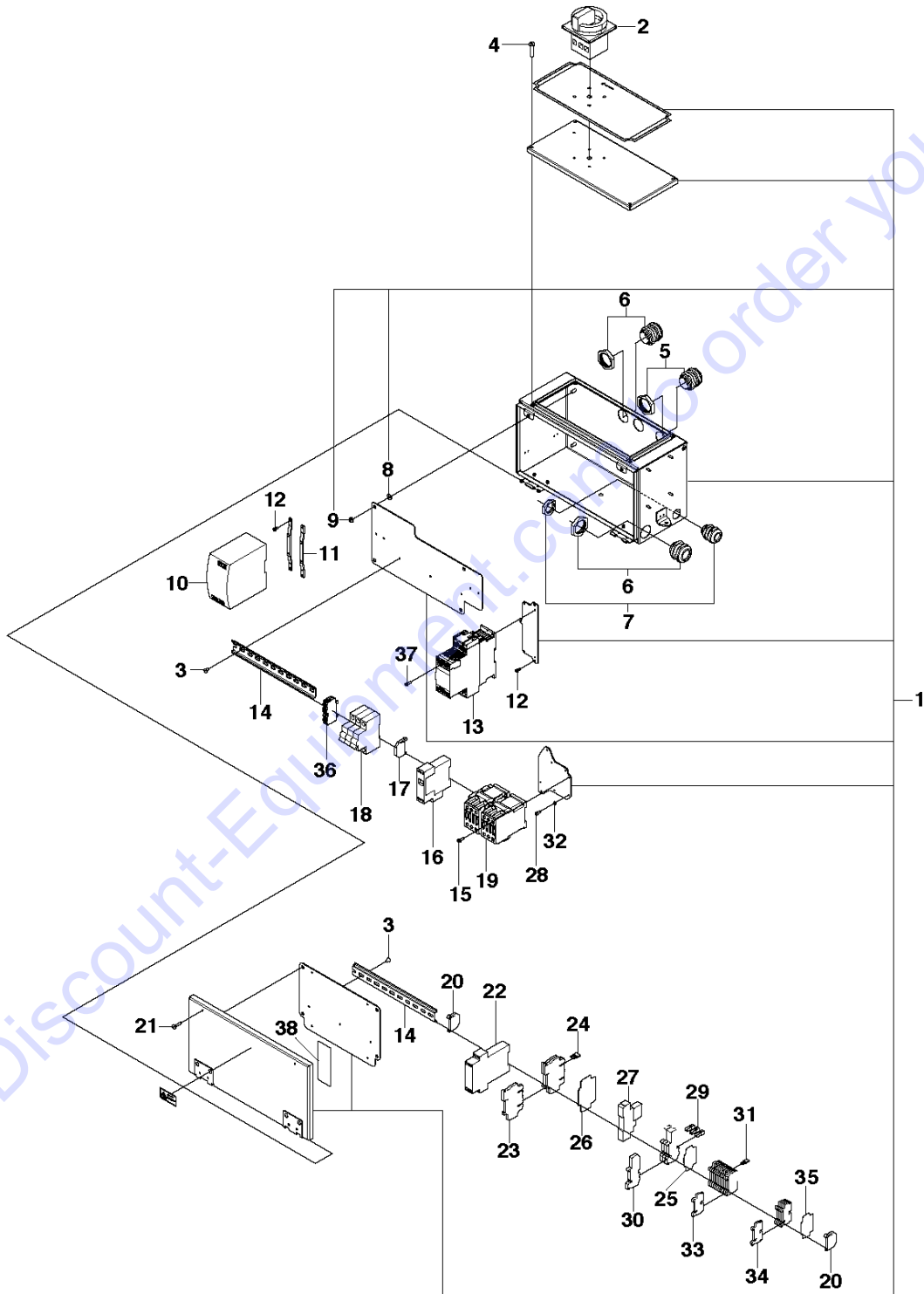
F1 DXR 140



Ref	Part No	Description	Remark	QTY	KIT
1	576 29 46-01	BOX		1	
2	522 87 14-01	MAIN SWITCH		1	1
3	510 28 49-01	HOUR METER		1	1
4	725 23 33-51	SCREW EHHM		4	1
5	575 88 81-01	SWITCH		1	1
6	523 05 74-01	CABLE		3	1
7	523 05 75-01	CABLE		1	1
8	576 29 40-01	WASHER		8	1
9	576 29 36-01	NUT		8	1
10	505 52 74-01	TRANSFORMER	T1	1	1
11	523 05 53-04	RAIL		2	1
12	576 29 32-01	SCREW IHSCM		10	1
13	525 51 31-01	STARTER	T2	1	1
14	523 05 53-05	RAIL		2	1
15	522 91 16-01	RELAY	B1, Safety relay	1	1
16	522 86 92-01	RELAY	K1, Phase sequence relay	1	1
17	522 92 21-01	STOP		4	1
18	522 91 18-01	FUSE		1	1
19	525 51 30-01	CONTACTOR		1	1
20	576 71 61-01	RELAY	Auxiliary relay	1	1
21	725 23 29-71	SCREW EHHM		2	1
22	575 46 49-02	CONTROL	T3, Fan control relay	1	1
23	522 92 25-01	RELAY		1	1
24	575 89 44-01	BAR		1	1
25	575 88 78-01	RELAY	K2, K3, K4, K5, K7	3	1
26	575 89 49-01	PLATE		1	1
27	575 88 91-01	RELAY	K6, Start relay	1	1
28	575 88 90-01	RELAY		1	1
29	575 89 42-01	JUMPER BAR		3	1
30	522 92 18-01	FUSE HOLDER		4	1
31	575 89 45-01	JUMPER BAR		1	1
32	575 89 46-01	JUMPER BAR		1	1
33	575 88 79-01	TERMINAL BLOCK		9	1
34	575 88 80-01	TERMINAL BLOCK		5	1
35	522 92 65-01	TERMINAL BLOCK		5	1
36	577 97 80-01	RELAY	Auxiliary relay	1	

Go to Discount-Equipment.com to order your parts

F1 DXR 140

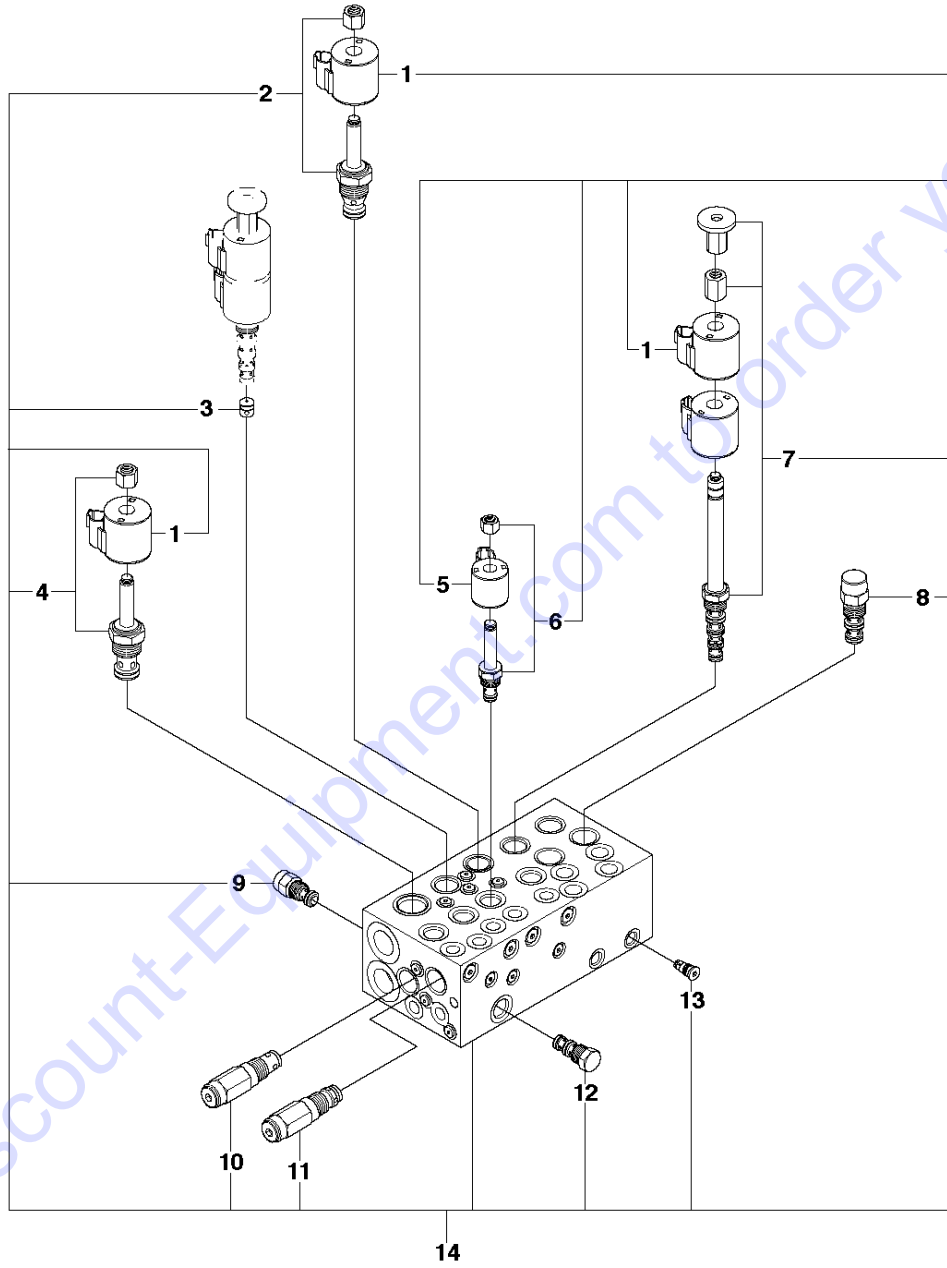


ELECTRICAL, Valid for machine 122 and forward DXR140, Valid for machine 1 and forward, 2013-08

Ref	Part No	Description	Remark	QTY KIT
1	584 81 04-01	ELECTRONIC BOX		1
2	522 87 14-01	MAIN SWITCH		1
3	581 31 05-01	SCREW IHANM		11
4	725 23 33-51	SCREW EHHM		4
5	523 05 73-01	CABLE		2
6	523 05 74-01	CABLE		3
7	523 05 75-01	CABLE		1
8	576 29 40-01	WASHER		8
9	576 29 36-01	NUT		8
10	505 52 74-01	TRANSFORMER	T1	1
11	581 28 66-01	BRACKET		2
12	725 52 87-01	SCREW IHSCM		4
13	577 97 79-01	STARTER		1
14	523 05 53-05	RAIL	250mm	1
14	523 05 53-08	RAIL	100mm	1
15	585 27 89-01	SCREW IHSCFM		4
16	522 86 92-01	RELAY	K1, Phase sequence relay	1
17	522 92 21-01	STOP		1
18	522 91 18-01	FUSE		1
19	584 80 52-01	CONTACTOR		1
20	584 82 16-01	TERMINAL BLOCK		2
21	725 23 29-71	SCREW EHHM		2
22	584 82 54-01	RELAY	B1, Safety relay	1
23	522 92 25-01	RELAY	K2, K3, K4, K5	4
24	575 89 44-01	BAR		1
25	584 82 12-01	TERMINAL BLOCK		1
26	575 89 49-01	PLATE		1
27	575 88 88-01	RELAY	K6, Start relay	1
28	725 52 89-01	SCREW IHSCM		4
29	584 81 95-01	TERMINAL BLOCK		2
30	584 80 60-01	FUSE HOLDER		7
31	584 81 00-01	TERMINAL BLOCK		1
32	585 27 84-01	WASHER		4
33	584 80 57-01	TERMINAL BLOCK		7
34	584 85 32-01	TERMINAL BLOCK		2
35	584 85 35-01	TERMINAL BLOCK		1
36	579 70 53-01	TERMINAL BLOCK		2
37	725 52 91-01	SCREW IHSCM		4
38	580 36 71-01	STICKER		1

Go to Discount-Equipment.com to order your parts

C3 DXR 140

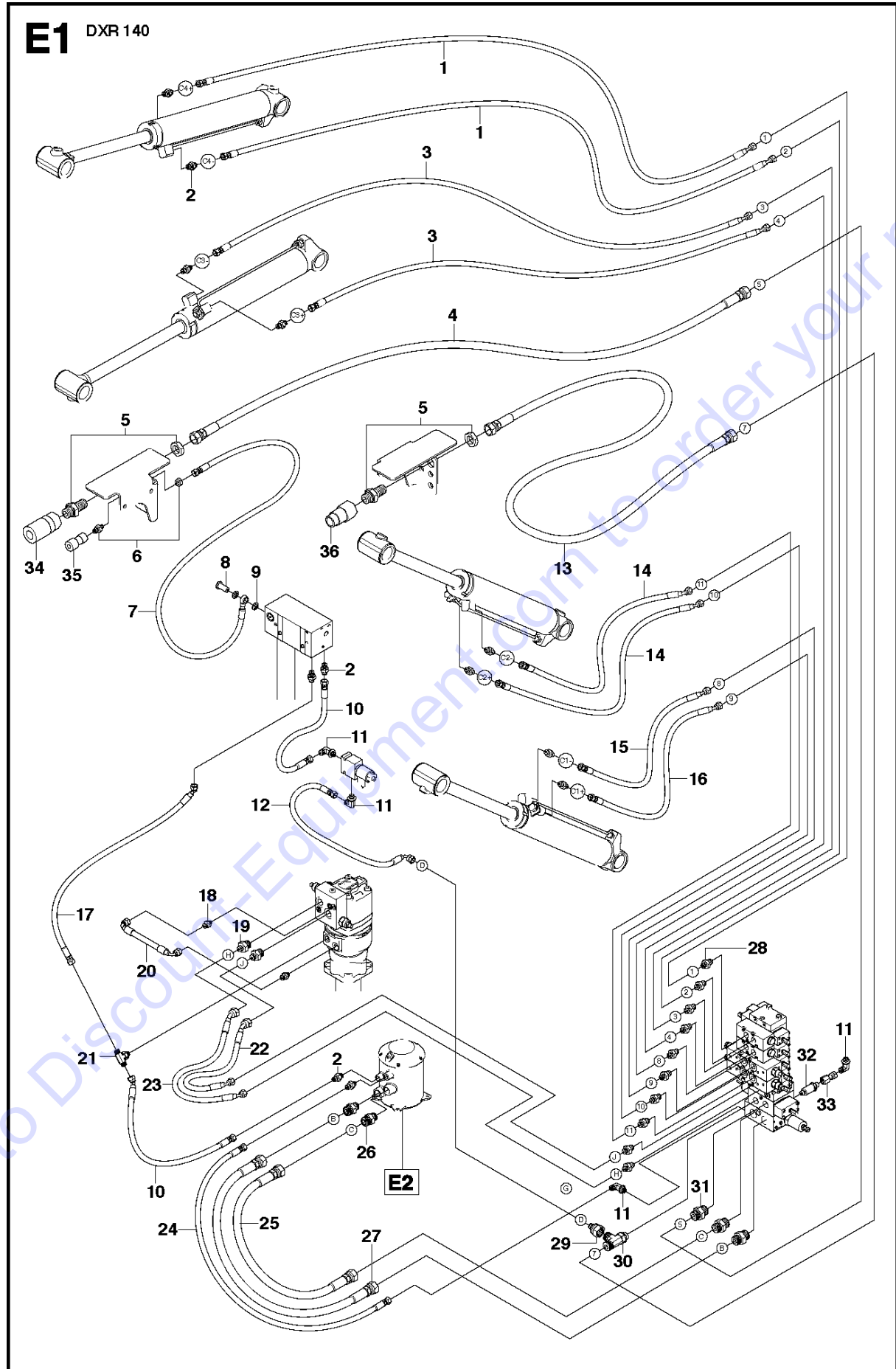


HYDRAULIC BLOCK

DXR140, Valid for machine 1 and forward, 2013-08

Ref	Part No	Description	Remark	QTY	KIT
1	576 33 90-01	SOLENOID		9	14
2	576 34 75-01	VALVE		1	14
3	576 34 67-01	VALVE		1	14
4	576 33 88-01	VALVE		1	14
5	576 34 70-01	SOLENOID		4	14
6	576 34 69-01	VALVE		4	14
7	576 33 89-01	VALVE		3	14
8	576 34 68-01	VALVE		2	14
9	576 34 76-01	VALVE		1	14
10	576 34 72-01	VALVE		1	14
11	576 34 71-01	VALVE		1	14
12	576 34 74-01	VALVE		1	14
13	576 34 73-01	VALVE		2	14
14	573 96 47-01	VALVE ASSY		1	

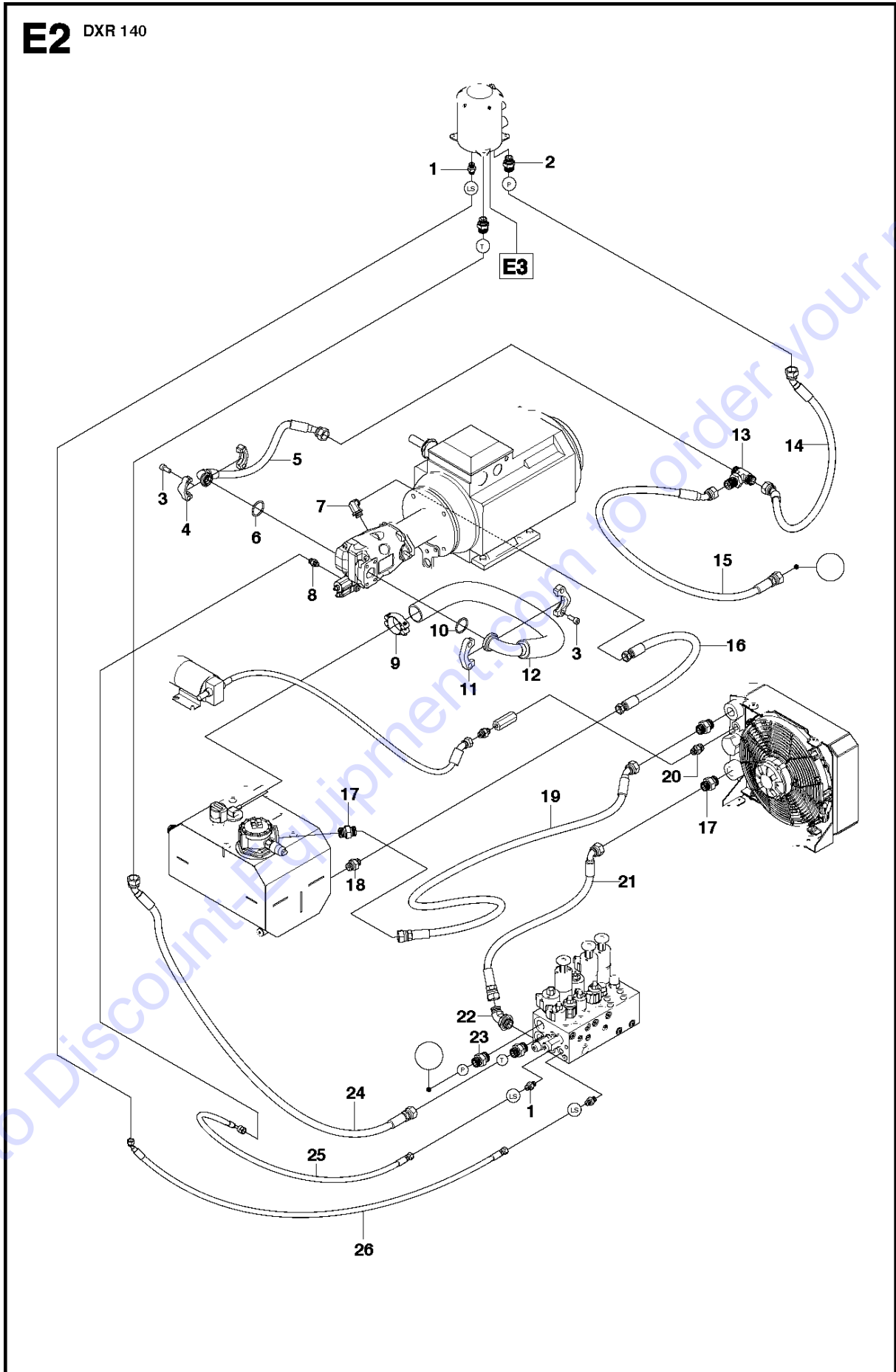
Go to Discount-Equipment.com to order your parts



Ref	Part No	Description	Remark	QTY KIT
1	510 23 48-13	HOSE ASSY		2
2	510 24 57-01	ADAPTER		12
3	510 23 48-08	HOSE ASSY		2
4	574 24 57-04	HOSE ASSY		1
5	574 68 73-01	ADAPTER		2
6	510 25 79-01	ADAPTER		1
7	576 54 40-01	HOSE ASSY		1
8	576 48 51-01	ADAPTER		1
9	574 66 42-01	WASHER		2
10	510 25 18-12	HOSE ASSY		1
11	510 26 54-01	ADAPTER		2
12	522 67 25-17	HOSE ASSY		1
13	574 24 32-05	HOSE ASSY		1
14	510 23 48-07	HOSE ASSY		2
15	510 23 48-12	HOSE ASSY		1
16	510 23 48-11	HOSE ASSY		1
17	522 67 25-08	HOSE ASSY		1
18	514 37 34-01	ADAPTER		2
19	510 25 90-01	ADAPTER		2
20	574 45 33-01	HOSE ASSY		1
21	574 75 36-01	ADAPTER		1
22	574 79 45-01	HOSE ASSY		1
23	574 79 45-02	HOSE ASSY		1
24	510 25 18-13	HOSE ASSY		1
25	574 24 57-01	HOSE ASSY		1
26	574 24 60-01	ADAPTER		3
27	574 24 57-02	HOSE ASSY		1
28	522 73 00-01	ADAPTER		10
29	522 83 74-01	ADAPTER		1
30	522 61 36-01	ADAPTER		1
31	574 24 61-01	ADAPTER		3
32	522 49 53-02	SENSOR		1
33	510 40 87-01	ADAPTER		1
34	510 26 81-01	QUICK COUPLING		1
35	510 26 79-01	QUICK COUPLING		1
36	510 26 80-01	QUICK COUPLING		1

Go to Discount-Equipment.com to order your parts

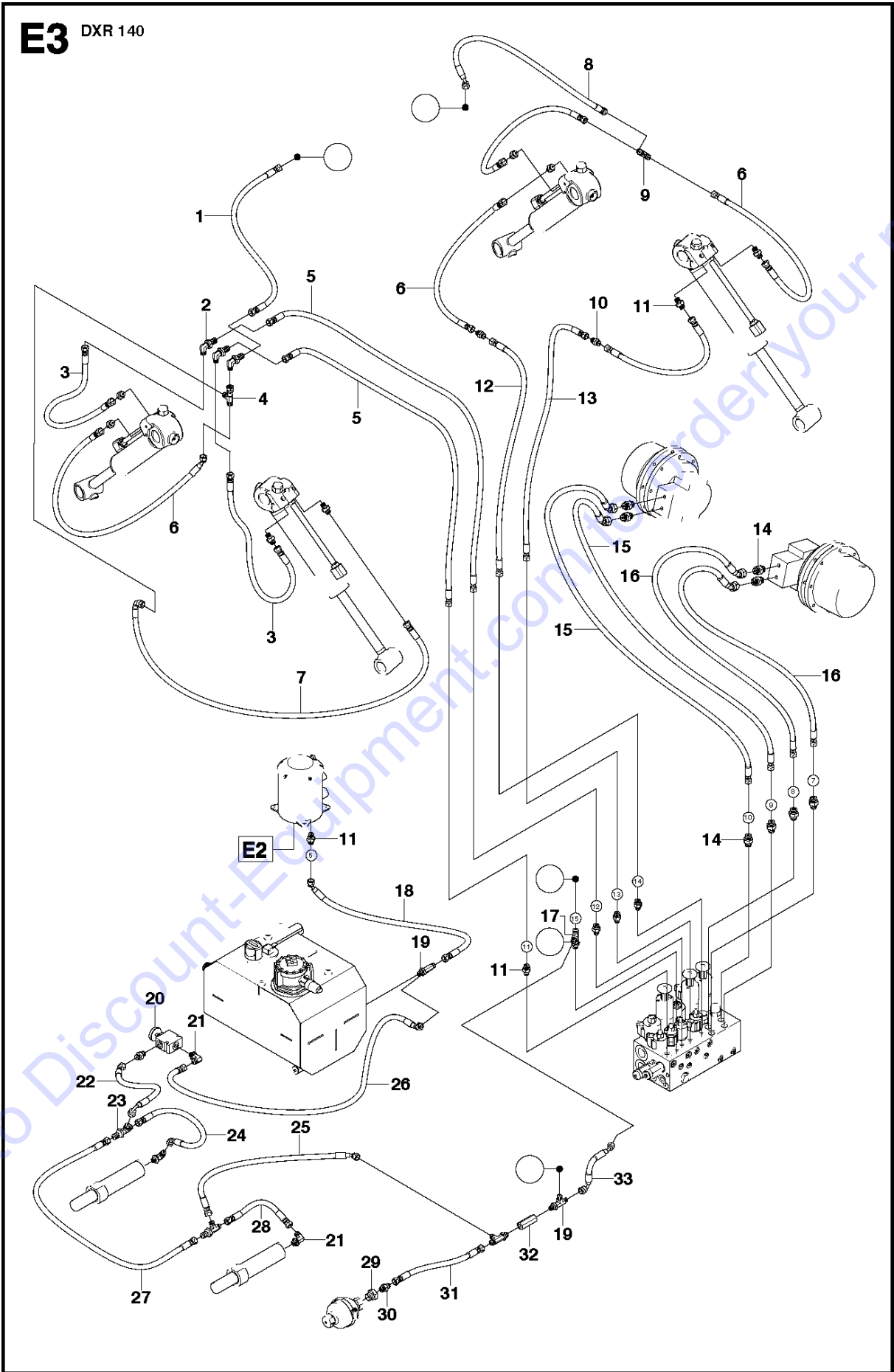
E2 DXR 140



Ref	Part No	Description	Remark	QTY KIT
1	510 24 57-01	ADAPTER		19
2	574 24 60-01	ADAPTER		2
3	725 24 95-76	SCREW EHHM		8
4	574 24 12-01	FLANGE		2
5	576 03 42-01	HOSE ASSY		1
6	510 36 31-04	O-RING		1
7	574 89 08-01	ADAPTER		1
8	510 26 47-01	ADAPTER		1
9	510 36 32-02	HOSE CLAMP		1
10	510 36 31-03	O-RING		1
11	574 24 11-01	FLANGE		2
12	574 24 55-03	HOSE ASSY		1
13	574 68 74-01	ADAPTER		1
14	574 24 30-01	HOSE ASSY		1
15	574 24 32-04	HOSE ASSY		1
16	576 03 54-01	HOSE ASSY		1
17	510 26 46-01	ADAPTER		4
18	510 25 85-01	ADAPTER		1
19	510 19 53-03	HOSE ASSY		1
20	510 26 11-01	ADAPTER		1
21	576 03 53-01	HOSE ASSY		1
22	576 12 56-01	ADAPTER		1
23	574 24 61-01	ADAPTER		1
24	576 03 52-01	HOSE ASSY		1
25	522 67 25-11	HOSE ASSY		1
26	510 23 48-16	HOSE ASSY		1

Go to Discount-Equipment.com to order your parts

E3 DXR 140

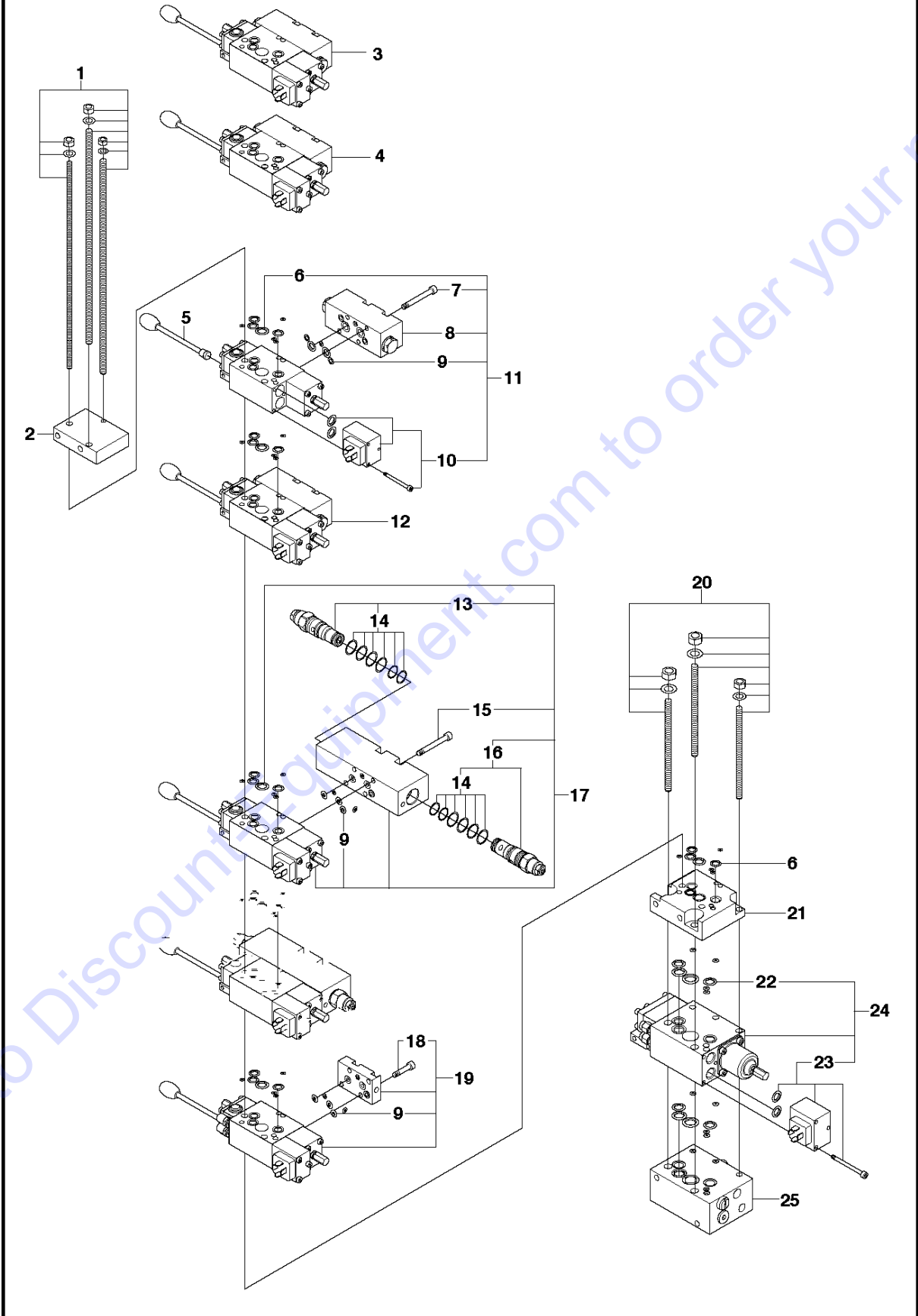


HYDRAULIC HOSES TRACKS & SUPPORT LEGS DXR140, Valid for machine 1 and forward, 2013-08

Ref	Part No	Description	Remark	QTY KIT
1	522 67 25-16	HOSE ASSY		1
2	574 68 75-01	ADAPTER		3
3	510 25 18-23	HOSE ASSY		2
4	514 37 35-01	ADAPTER		1
5	510 25 18-22	HOSE ASSY		1
6	510 23 48-14	HOSE ASSY		1
7	522 67 25-17	HOSE ASSY		1
8	510 23 48-06	HOSE ASSY		1
9	510 24 73-01	ADAPTER		2
10	576 12 55-01	ADAPTER		4
11	510 24 57-01	ADAPTER		19
12	510 25 18-01	HOSE ASSY		1
13	510 25 18-20	HOSE ASSY		1
14	510 24 58-01	ADAPTER		4
15	510 16 97-03	HOSE ASSY		2
16	510 16 97-02	HOSE ASSY		2
17	575 30 03-01	ADAPTER		1
18	510 23 48-15	HOSE ASSY		1
19	510 24 57-01	ADAPTER		1
19	575 30 03-01	ADAPTER	Hydraulic Tension	1
20	575 59 66-01	CONTROL VALVE		4
21	510 26 54-01	ADAPTER		1
22	574 24 34-03	HOSE ASSY		1
23	575 59 54-01	ADAPTER		2
24	575 64 99-04	HOSE ASSY		1
25	575 64 99-02	HOSE ASSY		1
26	575 64 99-03	HOSE ASSY		1
27	510 25 18-14	HOSE ASSY		1
28	510 25 18-26	HOSE ASSY		1
29	575 59 57-01	PLUG		1
30	510 24 57-01	ADAPTER		2
31	510 25 18-25	HOSE ASSY		1
32	575 59 62-01	CHECK VALVE		1
33	574 24 34-01	HOSE ASSY		1

Go to Discount-Equipment.com to order your parts

C2 DXR 140

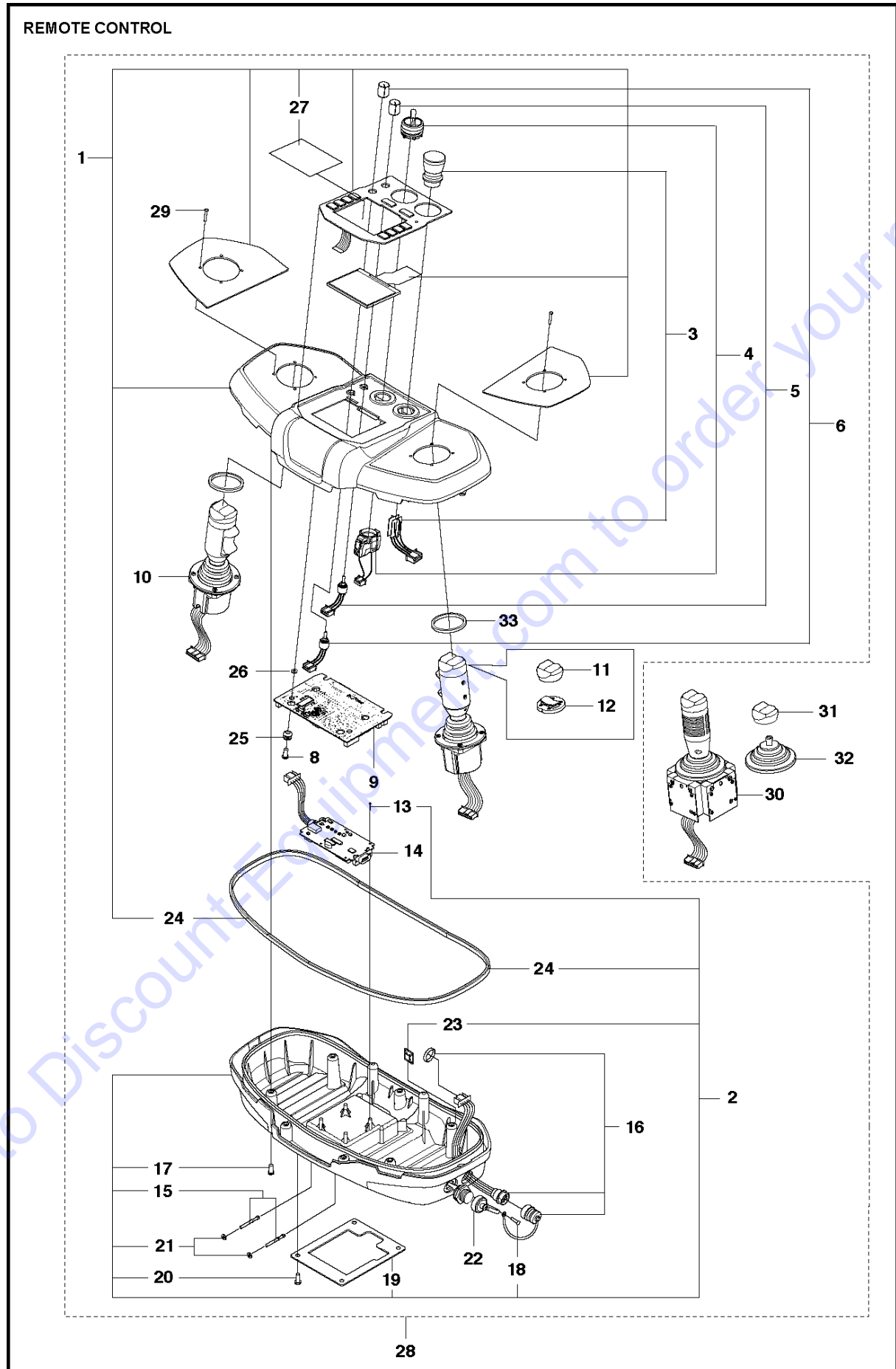


HYDRAULIC STACK

DXR140, Valid for machine 1 and forward, 2013-08

Ref	Part No	Description	Remark	QTY	KIT
1	522 96 34-01	TAP	5 sections	1	
1	523 06 20-01	TAP	Extra hydraulic function 1 (6 sections)	1	
1	523 06 24-01	TAP	Extra hydraulic function 2 (7 sections)	1	
2	522 80 04-01	VALVE		1	
3	576 38 72-01	VALVE		1	
4	576 38 72-01	VALVE		1	
5	576 70 11-01	HANDLE		7	
6	522 96 14-01	O-RING		1	11
7	725 53 78-51	SCREW IHSCM		8	11
8	522 96 25-01	VALVE		2	11
9	522 96 16-01	O-RING		1	11,19
10	522 96 13-01	SOLENOID		1	11
11	576 30 36-01	VALVE		1	
12	576 30 15-01	VALVE		1	
13	522 96 23-01	VALVE		1	17
14	522 96 24-01	O-RING		2	13,17
15	725 53 80-51	SCREW IHSCM		8	17
16	522 96 22-01	VALVE		1	17
17	576 29 70-01	VALVE		2	
18	725 53 68-01	SCREW IHSCM		1	19
19	576 30 61-01	VALVE		1	
20	522 96 33-01	TAP		1	
21	522 79 98-01	VALVE		1	
22	522 96 19-01	O-RING		1	24
23	522 96 18-01	SOLENOID		1	24
24	576 31 14-01	VALVE		1	
25	576 31 23-01	VALVE		1	

Go to Discount-Equipment.com to order your parts



REMOTE CONTROL

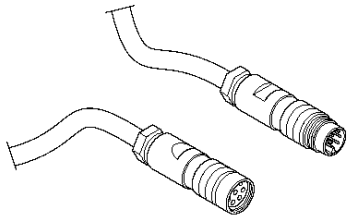
DXR140, Valid for machine 1 and forward, 2013-08

Ref	Part No	Description	Remark	QTY	KIT
1	587 36 11-01	COVER KIT		1	28
2	587 36 61-01	COVER KIT		1	28
3	510 36 33-01	SWITCH	Machine stop	1	28
4	510 36 35-01	SWITCH	Main switch, ON/OFF	1	28
5	522 96 65-01	POTENTIOMETER	Tool	1	28
6	522 96 66-01	POTENTIOMETER	Machine	1	28
8	522 66 89-01	SCREW CRPANT		4	28
9	510 21 73-07	CONTROL BOARD	No firmware installed	1	28
10	582 45 09-01	JOYSTICK		1	28
11	582 42 18-01	PROTECTION		1	10
12	582 42 10-01	BUTTON KIT		1	10
13	522 79 66-01	SCREW CCRPANT		4	2,28
14	510 21 78-01	CONTROL BOARD	Bluetooth	1	28
15	510 22 26-01	SPRING PIN		2	2,28
16	522 96 67-01	CONNECTION	Communication cable	1	28
17	503 21 74-16	SCREW IHSCT		9	2,28
18	523 00 50-01	SCREW CRPANT		1	2,28
19	510 10 85-01	PLATE		1	2,28
20	586 18 79-01	SCREW CRPANT		4	2,28
21	734 11 24-01	WASHER		1	2,28
22	586 14 66-01	CONTACT	USB	1	28
23	577 96 36-01	CABLE HOLDER		1	2,28
24	576 88 80-05	SEALING STRIP		1	1,2,28
25	510 21 76-01	BUSHING		1	28
26	734 11 36-60	WASHER		1	28
27	585 30 68-01	PROTECTION		1	1,28
28	585 16 11-01	REMOTE CONTROL		1	
29	582 42 06-02	SCREW		1	28
30	510 21 40-01	JOYSTICK	LEFT	1	
30	510 21 40-02	JOYSTICK	RIGHT	1	
31	576 63 31-01	SEAL		2	30
32	576 63 32-01	SEAL		2	30
33	589 75 28-01	WASHER		1	28

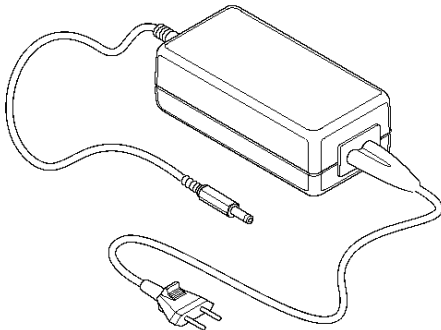
Go to Discount-Equipment.com to order your parts

F2 REMOTE CONTROL ACCESSORIES

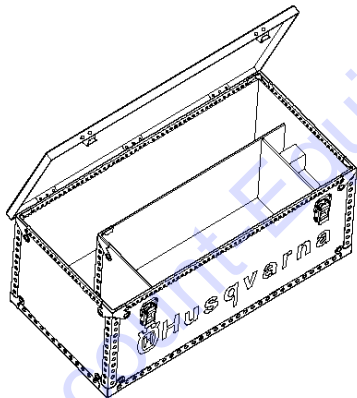
3



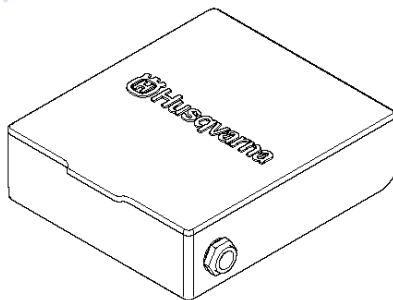
4



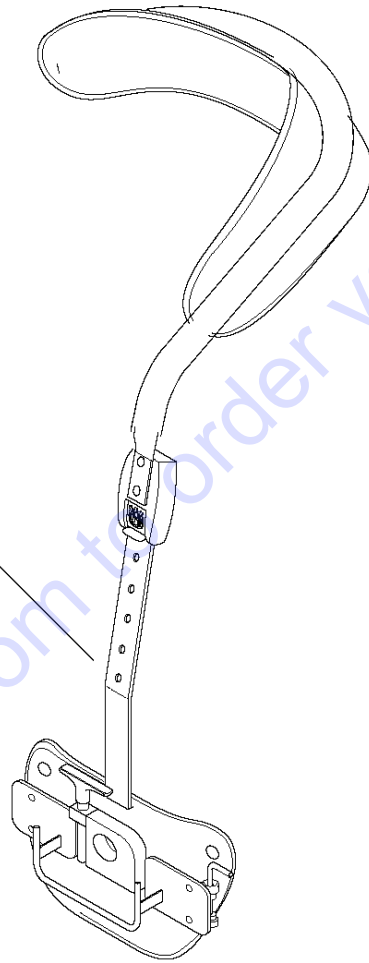
5



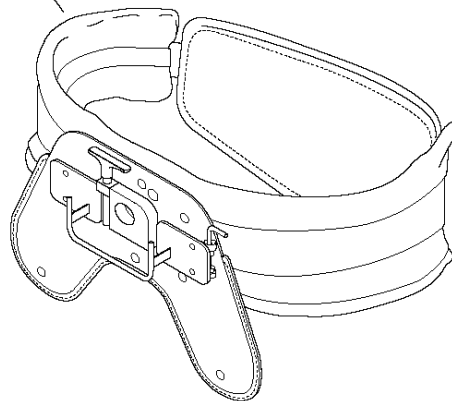
6



1



2

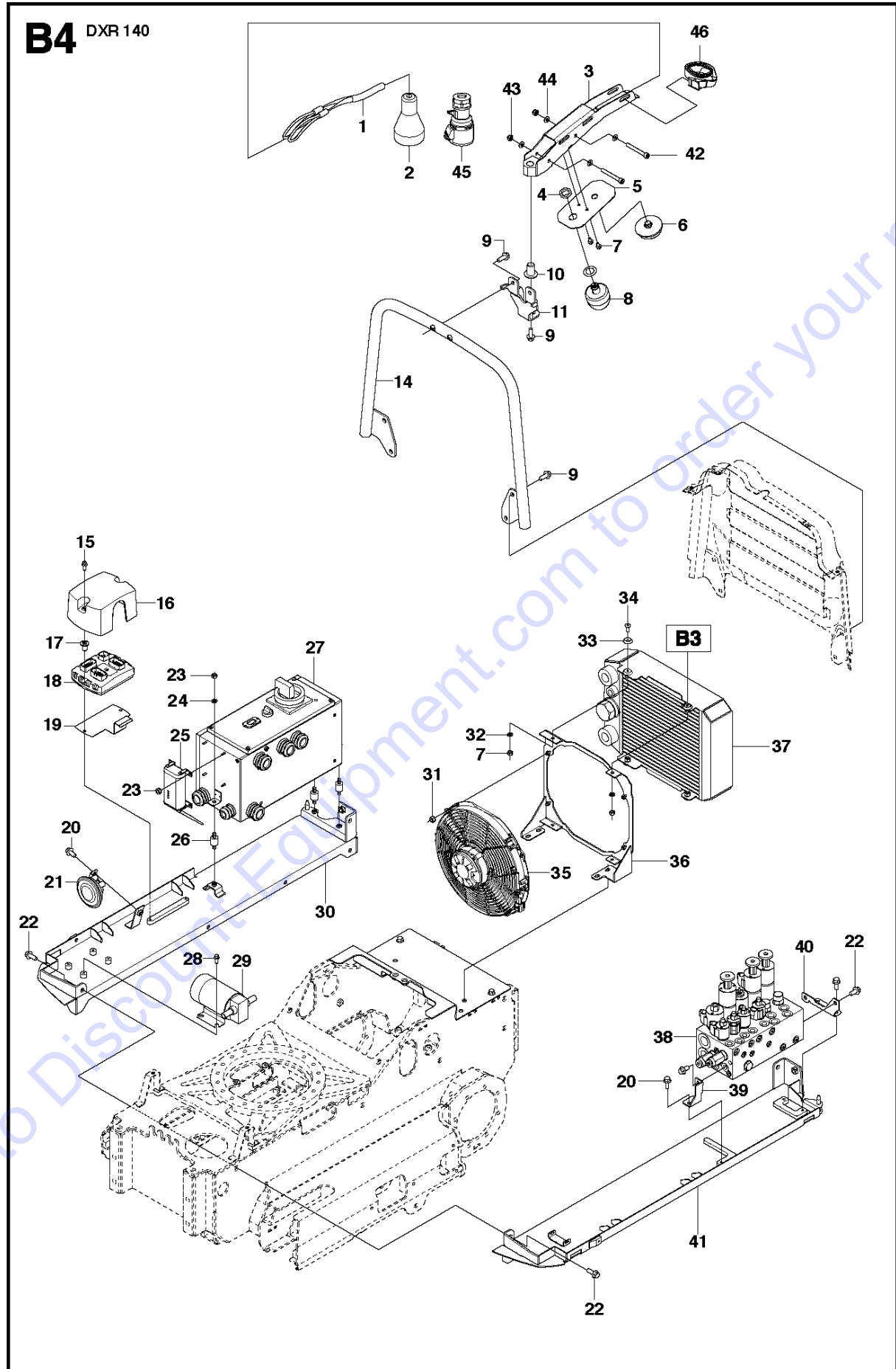


REMOTE CONTROL ACCESSORIES

DXR140, Valid for machine 1 and forward, 2013-08

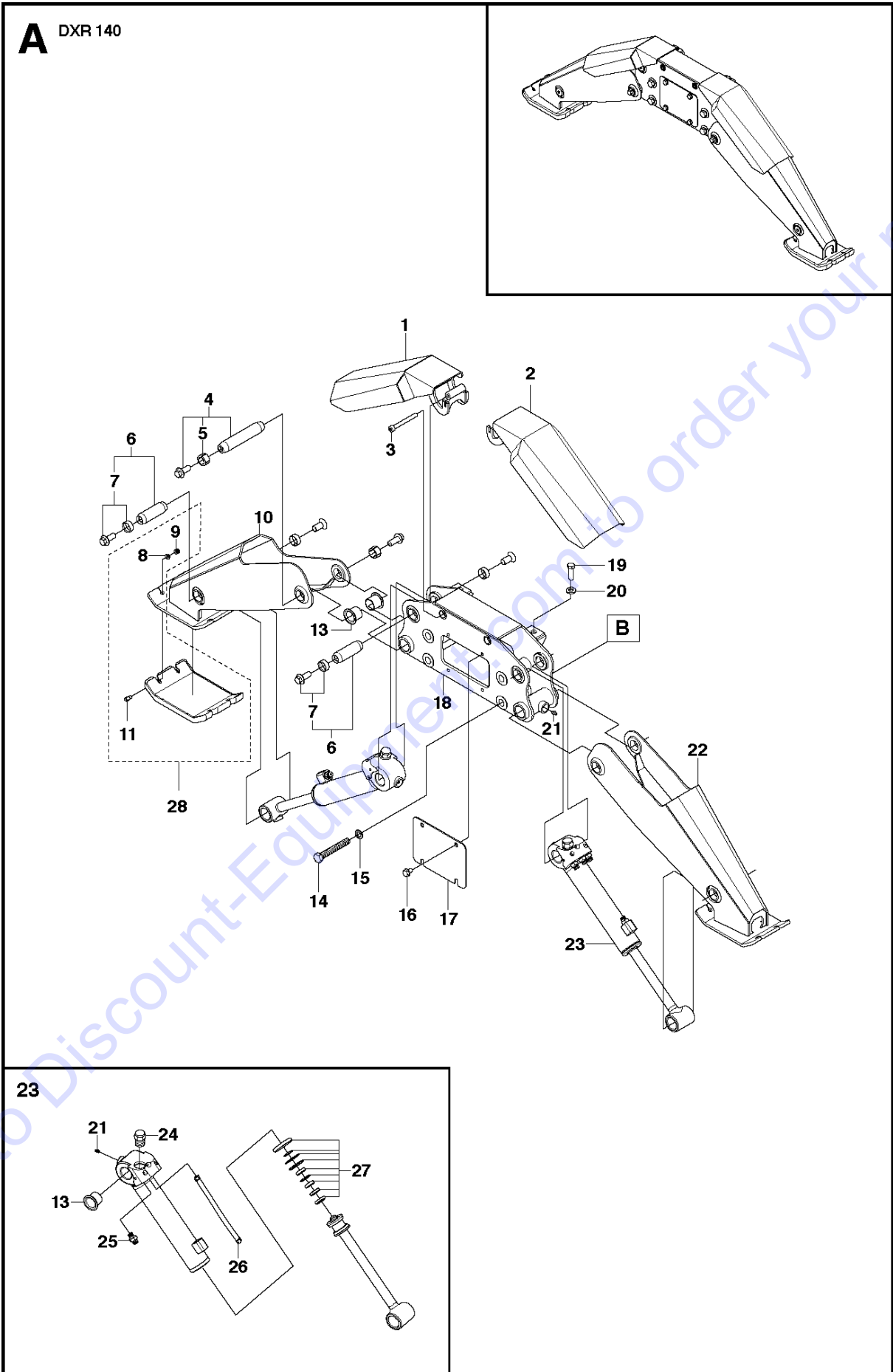
Ref	Part No	Description	Remark	QTY KIT
1	501 79 30-01	HARNESS		1
2	501 79 31-01	HARNESS		1
3	510 28 20-01	CABLE		1
4	510 28 50-03	CHARGER		1
5	525 74 75-01	PACKING		1
6	587 31 16-01	BATTERY		1

Go to Discount-Equipment.com to order your parts



Ref	Part No	Description	Remark	QTY KIT
1	574 66 78-01	CABLE CLAMP		1
2	510 27 77-02	CABLE		1
3	581 56 63-01	ARM		1
4	581 48 08-01	NUT		1
5	581 59 08-01	BRACKET		1
6	580 28 92-01	ANTENNA		1
7	522 66 94-01	LOCK NUT		2
8	581 10 35-01	LIGHT		1
9	574 25 89-01	SCREW EHHFM		3
10	574 71 30-01	PIN		1
11	581 59 15-01	BRACKET		1
14	576 56 64-01	PROTECTOR BAR		1
15	522 66 86-01	SCREW EHHFM		2
16	574 66 49-01	PROTECTION		1
17	574 70 15-01	SCREW		2
18	576 73 75-01	ELECTRONIC BOX		1
19	574 70 14-01	BRACKET		1
20	725 24 47-51	SCREW		4
21	510 12 60-01	HORN		1
22	522 70 66-01	SCREW EHHFM		10
23	732 25 12-01	HEXAGON LOCKING NUT		7
24	522 67 15-01	WASHER		3
25	505 27 45-01	ELECTRIC BOX		1
26	575 72 77-01	DAMPER		3
27	584 81 03-01	ELECTRONIC BOX		1
28	522 66 84-01	SCREW EHHFM		4
29	588 83 87-01	OIL PUMP	Valid for machine S/N 255- forward	1
29	589 38 14-01	OIL PUMP	Valid for machine S/N 1- 254	1
30	573 97 24-01	BOX		1
31	522 66 93-01	LOCK NUT		4
32	522 67 16-01	WASHER		4
33	523 04 24-01	WASHER		4
34	725 64 51-01	SCREW IHCSFM		4
35	523 03 20-01	FAN		1
36	574 71 07-01	BRACKET		1
37	523 03 21-01	OIL COOLER		1
38	573 96 47-01	VALVE ASSY	Valid for machine S/N 1- 254	1
38	590 21 76-01	VALVE ASSY	Valid for machine S/N 255- forward	1
39	574 69 25-01	BRACKET		1
40	574 69 26-01	BRACKET		1
41	573 97 23-01	BOX		1
42	587 15 87-01	SCREW EHHM		2
43	522 66 94-01	LOCK NUT		2
44	522 67 16-01	WASHER		4
45	531 11 71-31	SOCKET		1
46	522 73 36-01	STRAP		1

Go to Disrepair.com to order your parts



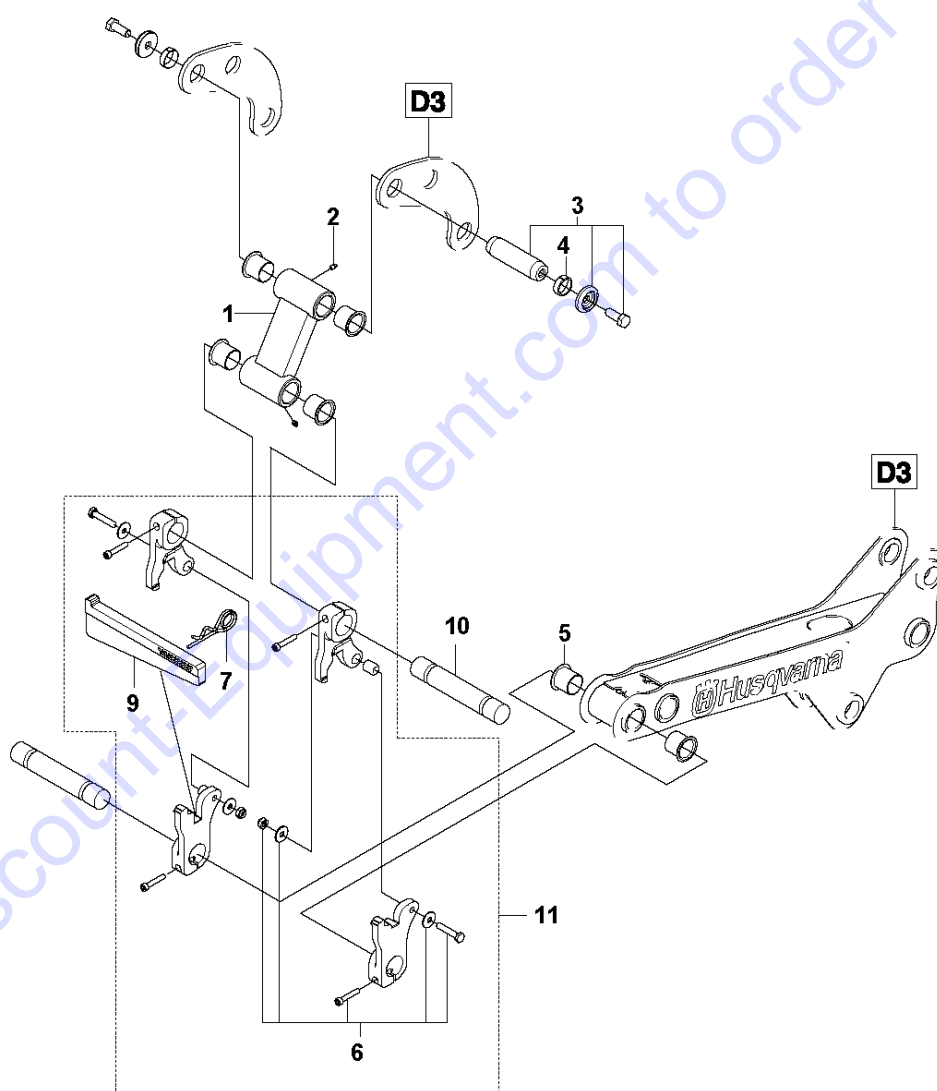
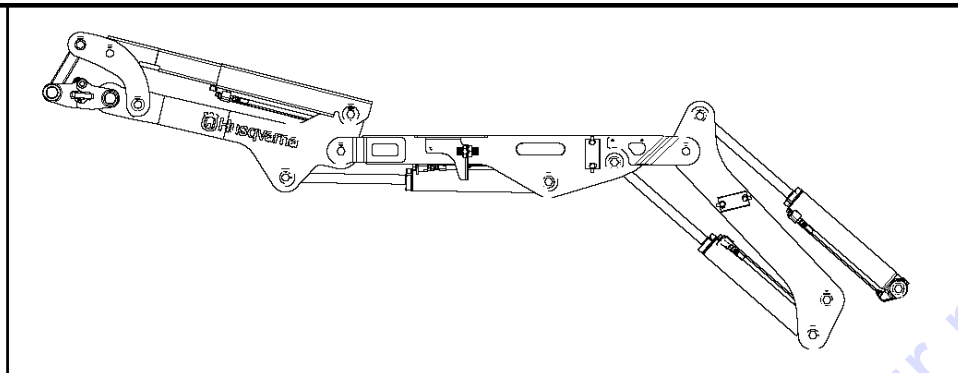
SUPPORT LEGS

DXR140, Valid for machine 1 and forward, 2013-08

Ref	Part No	Description	Remark	QTY	KIT
1	575 43 35-01	COVER		2	
2	575 43 36-01	COVER		2	
3	725 55 09-55	SCREW IHSCM		4	
4	525 80 38-01	SHAFT		4	
5	529 29 92-01	SLEEVE		8	4
6	586 11 98-01	SHAFT		4	
7	586 16 33-01	LOOSE PARTS KIT		8	6
8	522 67 17-01	WASHER		16	
9	522 66 95-01	LOCK NUT		16	
10	529 27 36-01	SUPPORT LEG		2	
11	522 66 72-02	SCREW IHSCM		16	
13	525 80 24-01	BEARING BUSH		8	
14	575 29 32-01	SCREW EHHM		8	
15	522 67 19-01	WASHER		8	
16	575 65 97-01	SCREW EHHFM		4	
17	575 65 98-01	PLATE		1	
18	575 48 77-01	BRACKET	REAR	1	
18	575 48 75-01	BRACKET	FRONT	1	
19	574 25 75-01	SCREW EHHM		2	
20	525 39 55-01	WASHER		2	
21	504 89 53-01	LUBRICATION NIPPLE		2	
22	529 27 35-01	SUPPORT LEG		2	
23	525 57 14-03	CYLINDER		4	
24	576 37 88-01	VALVE		4	23
25	510 24 57-01	ADAPTER		6	23
26	510 25 18-10	HOSE ASSY		4	23
27	575 76 20-01	SEAL		4	23
28	587 18 63-02	FOOTPLATE		1	8,9,11,12

Go to Discount-Equipment.com to order your parts

D4 DXR 140



Go to DiscountedEquipment.com to order your parts

TOOLS

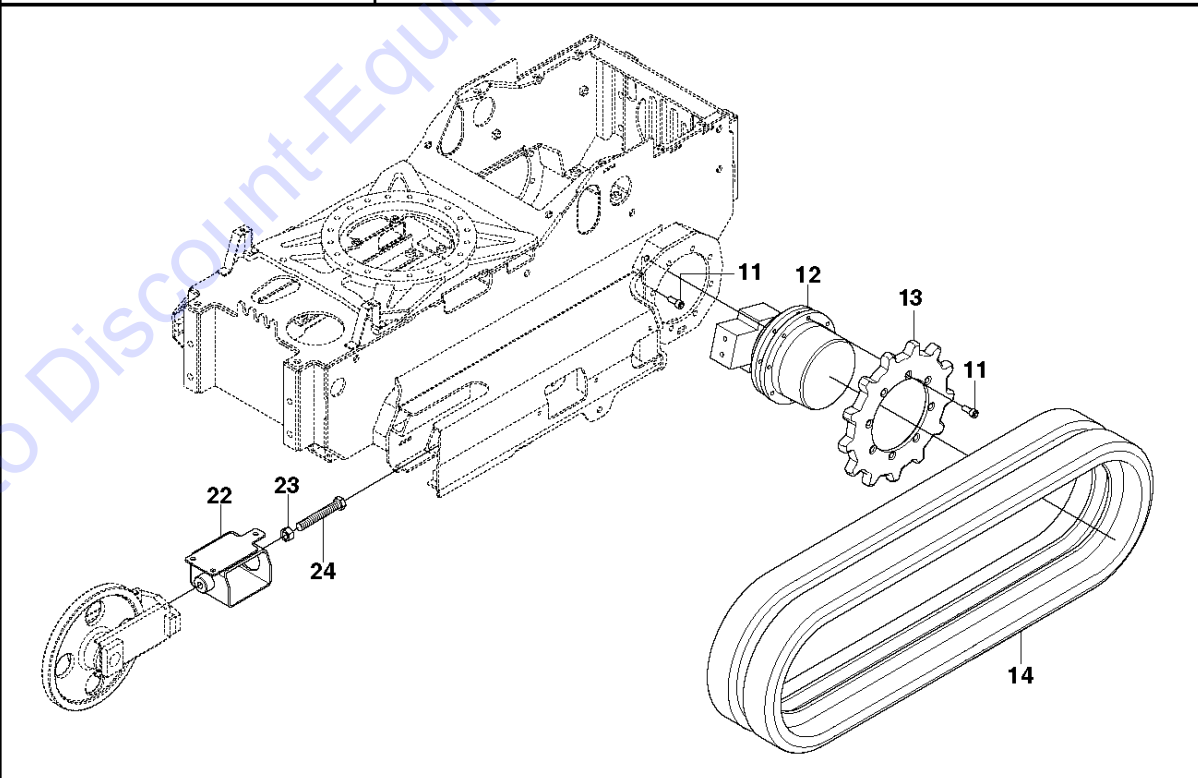
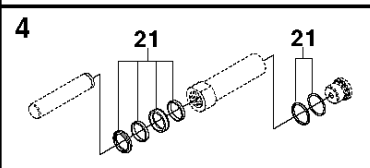
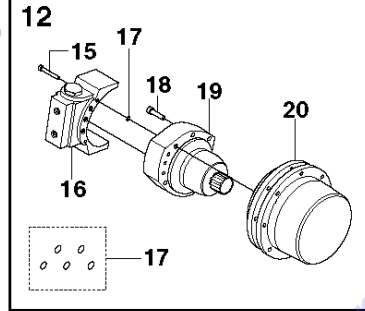
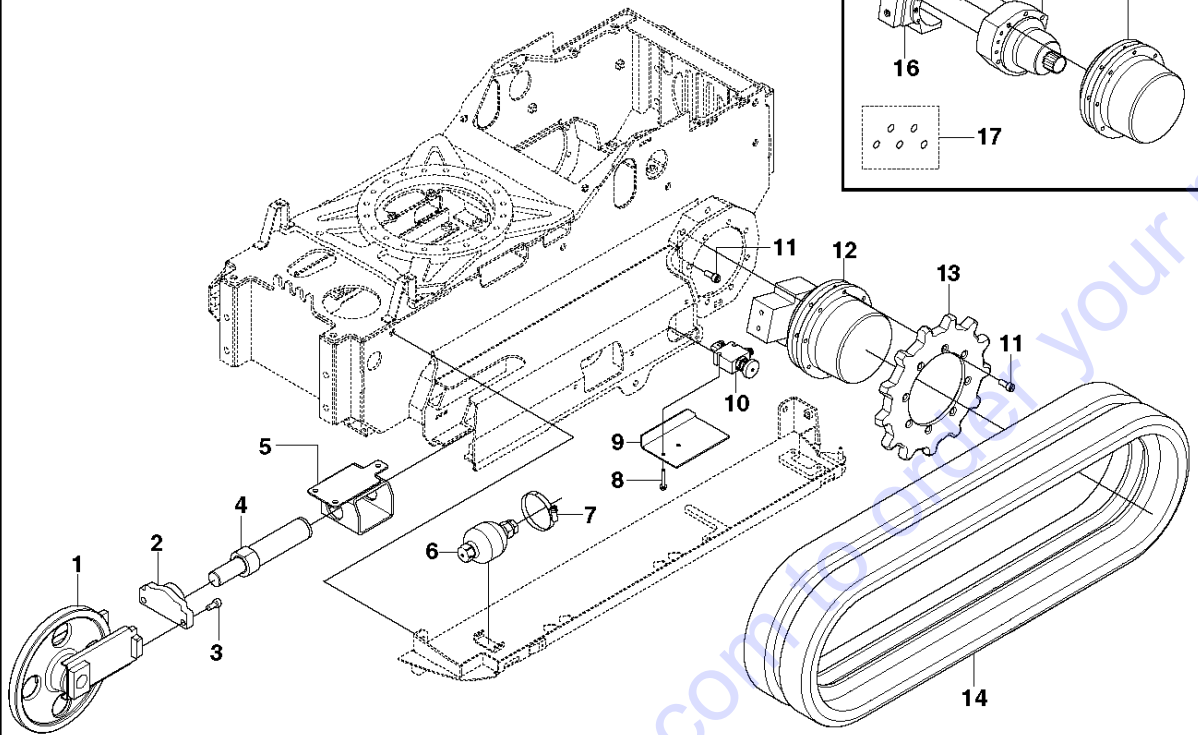
DXR140, Valid for machine 1 and forward, 2013-08

Ref	Part No	Description	Remark	QTY	KIT
1	525 47 67-01	ARM		1	
2	504 89 53-01	LUBRICATION NIPPLE		2	
3	525 76 27-01	SHAFT		1	
4	522 84 11-01	SLEEVE		2	3
5	505 25 08-01	BEARING BUSH		6	1
6	582 60 61-01	LOOSE PARTS KIT		1	11
6	576 45 62-01	KIT	valid for old tool hitch	1	11
7	588 93 82-01	COTTER		1	11
7	505 32 30-01	CLIP	valid for old tool hitch	1	11
	522 70 65-01	SCREW IHSETM	valid for old tool hitch	4	11
9	586 37 71-01	WEDGE		1	11
9	505 32 26-01	WEDGE	valid for old tool hitch	1	11
10	579 67 82-01	SHAFT		1	
10	525 84 51-01	SHAFT	valid for old tool hitch	2	
11	588 97 89-01	HITCH		1	
11	575 88 44-01	HITCH	valid for old tool hitch	1	

Go to Discount-Equipment.com to order your parts

B2 Hydraulic track tension

DXR 140



TRACK SYSTEM

DXR140, Valid for machine 1 and forward, 2013-08

Ref	Part No	Description	Remark	QTY	KIT
1	525 80 09-01	TENSION ROLLER		2	
2	579 31 77-01	PLATE		2	
3	725 54 95-01	SCREW IHSCM		4	
4	505 26 74-01	CYLINDER		2	
5	575 38 91-01	TUBE		1	
5	575 38 96-01	TUBE		1	
6	575 59 56-01	ACCUMULATOR		1	
7	575 61 14-01	HOSE CLAMP		1	
8	522 70 70-01	SCREW EHHFM		2	
9	575 39 13-01	PROTECTION		1	
10	575 59 66-01	CONTROL VALVE		1	
11	501 06 21-01	SCREW IHSCM		16	
12	574 70 11-01	DRIVE MOTOR		2	
13	525 79 75-01	SPROCKET		2	
14	579 32 84-01	RUBBER TRACKS		2	
15	725 54 67-51	SCREW IHSCM		4	
16	522 96 49-01	VALVE KIT		2	
17	522 96 50-01	SEAL		2	10
18	725 54 61-51	SCREW IHSCM		14	
18	725 54 57-51	SCREW IHSCM		8	
19	576 29 52-01	HYDRAULIC MOTOR		2	
20	522 96 48-01	GEARBOX		2	
21	522 85 76-01	SEAL		2	
22	574 71 77-01	TUBE	LH	1	
22	574 71 79-01	TUBE	RH	1	
23	575 29 29-01	NUT		2	
24	575 29 31-01	SCREW EHHM		2	

Go to Discount-Equipment.com to order your parts

PARTS FINDER

**Search Website
by Part Number**



**Search Manual
Library For Parts
Manual & Lookup Part
Numbers – Purchase
or Request Quote**

Search Manuals

Enter your information to help us find the right parts manual for your machine.

* Brand:

* Model:

* Serial:

* Part Number:

SEARCH

**Can't Find Part or
Manual? Request Help
by Manufacturer,
Model & Description**

Parts Order Form

Please fill in the following information to help us find the right part for your machine.

Manufacturer:	<input type="text"/>
Model:	<input type="text"/>
Description:	<input type="text"/>
Part Number:	<input type="text"/>
Quantity:	<input type="text"/>
Notes:	<input type="text"/>

Submit

Discount-Equipment.com is your online resource for quality parts & equipment.

Florida: **561-964-4949** Outside Florida TOLL FREE: **877-690-3101**

Need parts?

Click on this link: <http://www.discount-equipment.com/category/5443-parts/> and choose one of the options to help get the right parts and equipment you are looking for. Please have the machine model and serial number available in order to help us get you the correct parts. If you don't find the part on the website or on one of the online manuals, please fill out the request form and one of our experienced staff members will get back to you with a quote for the right part that your machine needs.

We sell worldwide for the brands: Genie, Terex, JLG, MultiQuip, Mikasa, Essick, Whiteman, Mayco, Toro Stone, Diamond Products, Generac Magnum, Airman, Haulotte, Barreto, Power Blanket, Nifty Lift, Atlas Copco, Chicago Pneumatic, Allmand, Miller Curber, Skyjack, Lull, Skytrak, Tsurumi, Husquvarna Target, Stow, Wacker, Sakai, Mi-T-M, Sullair, Basic, Dynapac, MBW, Weber, Bartell, Bennar Newman, Haulotte, Ditch Runner, Menegotti, Morrison, Contec, Buddy, Crown, Edco, Wyco, Bomag, Laymor, EZ Trench, Bil-Jax, F.S. Curtis, Gehl Pavers, Heli, Honda, ICS/PowerGrit, IHI, Partner, Imer, Clipper, MMD, Koshin, Rice, CH&E, General Equipment, Amida, Coleman, NAC, Gradall, Square Shooter, Kent, Stanley, Tamco, Toku, Hatz, Kohler, Robin, Wisconsin, Northrock, Oztec, Toker TK, Rol-Air, APT, Wylie, Ingersoll Rand / Doosan, Innovatech, Con X, Ammann, Mecalac, Makinex, Smith Surface Prep, Small Line, Wanco, Yanmar