



SPARE PARTS LIST

EARLY ENTRY SAWS

Soff-Cut 150 D, Valid from machine 2010
3000001, 2010-10

Go to Discount-Equipment.com to order your parts



PARTS FINDER

**Search Website
by Part Number**



**Search Manual
Library For Parts
Manual & Lookup Part
Numbers – Purchase
or Request Quote**

Search Manuals

Enter your information to help us find the right parts manual for your equipment.

* Brand:

* Model:

* Serial:

* Part Number:

SEARCH

**Can't Find Part or
Manual? Request Help
by Manufacturer,
Model & Description**

Parts Order Form

Please fill in the following information to help us find the right part for your equipment.

MANUFACTURER:

MODEL:

DESCRIPTION:

DATE:

TIME:

PHONE:

EMAIL:

ADDRESS:

CITY:

STATE:

ZIP:

SEARCH

Discount-Equipment.com is your online resource for quality parts & equipment.

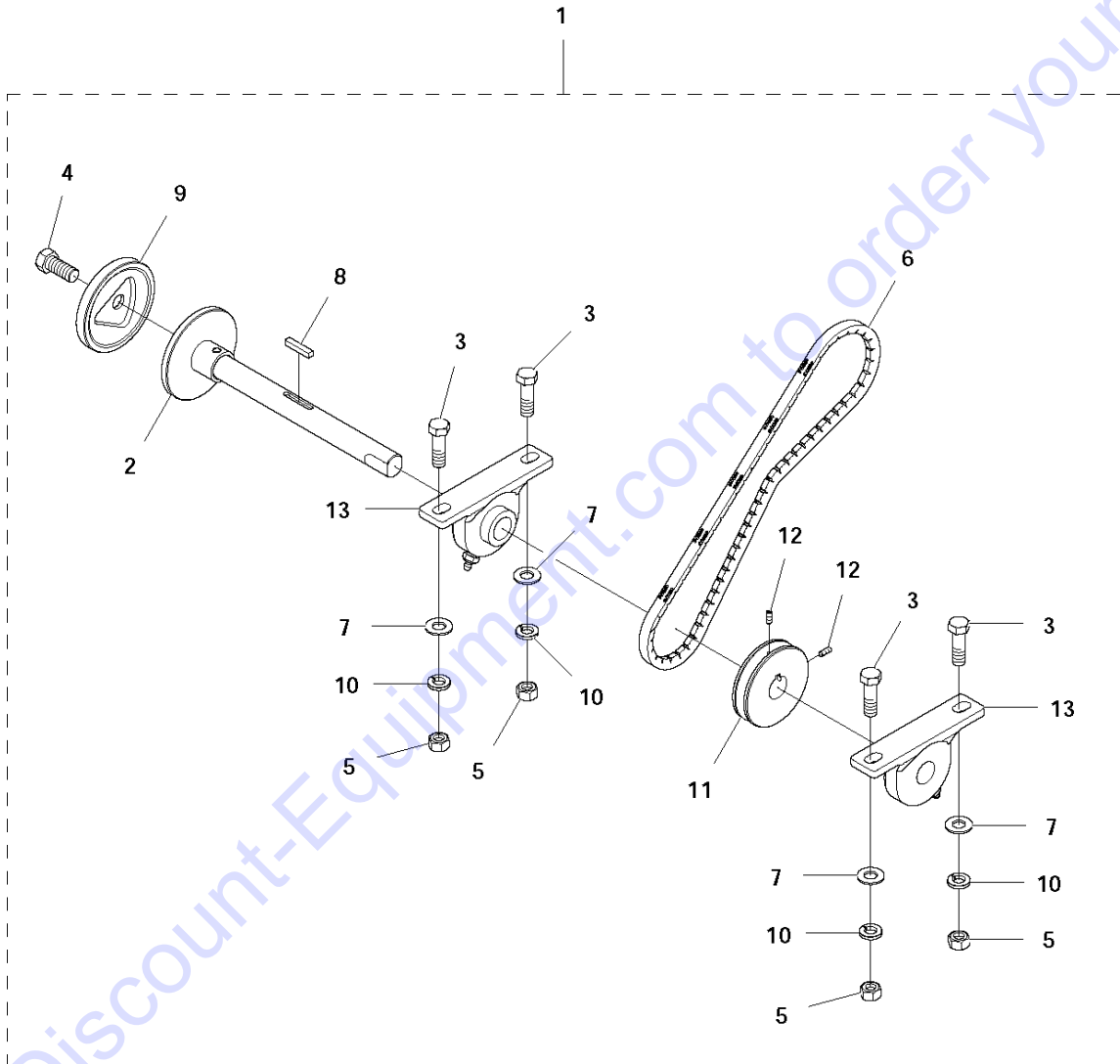
Florida: **561-964-4949** Outside Florida TOLL FREE: **877-690-3101**

Need parts?

Click on this link: <http://www.discount-equipment.com/category/5443-parts/> and choose one of the options to help get the right parts and equipment you are looking for. Please have the machine model and serial number available in order to help us get you the correct parts. If you don't find the part on the website or on one of the online manuals, please fill out the request form and one of our experienced staff members will get back to you with a quote for the right part that your machine needs.

We sell worldwide for the brands: Genie, Terex, JLG, MultiQuip, Mikasa, Essick, Whiteman, Mayco, Toro Stone, Diamond Products, Generac Magnum, Airman, Haulotte, Barreto, Power Blanket, Nifty Lift, Atlas Copco, Chicago Pneumatic, Allmand, Miller Curber, Skyjack, Lull, Skytrak, Tsurumi, Husquvarna Target, Stow, Wacker, Sakai, Mi-T-M, Sullair, Basic, Dynapac, MBW, Weber, Bartell, Bennar Newman, Haulotte, Ditch Runner, Menegotti, Morrison, Contec, Buddy, Crown, Edco, Wyco, Bomag, Laymor, EZ Trench, Bil-Jax, F.S. Curtis, Gehl Pavers, Heli, Honda, ICS/PowerGrit, IHI, Partner, Imer, Clipper, MMD, Koshin, Rice, CH&E, General Equipment, Amida, Coleman, NAC, Gradall, Square Shooter, Kent, Stanley, Tamco, Toku, Hatz, Kohler, Robin, Wisconsin, Northrock, Oztec, Toker TK, Rol-Air, APT, Wylie, Ingersoll Rand / Doosan, Innovatech, Con X, Ammann, Mecalac, Makinex, Smith Surface Prep, Small Line, Wanco, Yanmar

B Soff-Cut 150 D
BLADE SHAFT ASSEMBLY



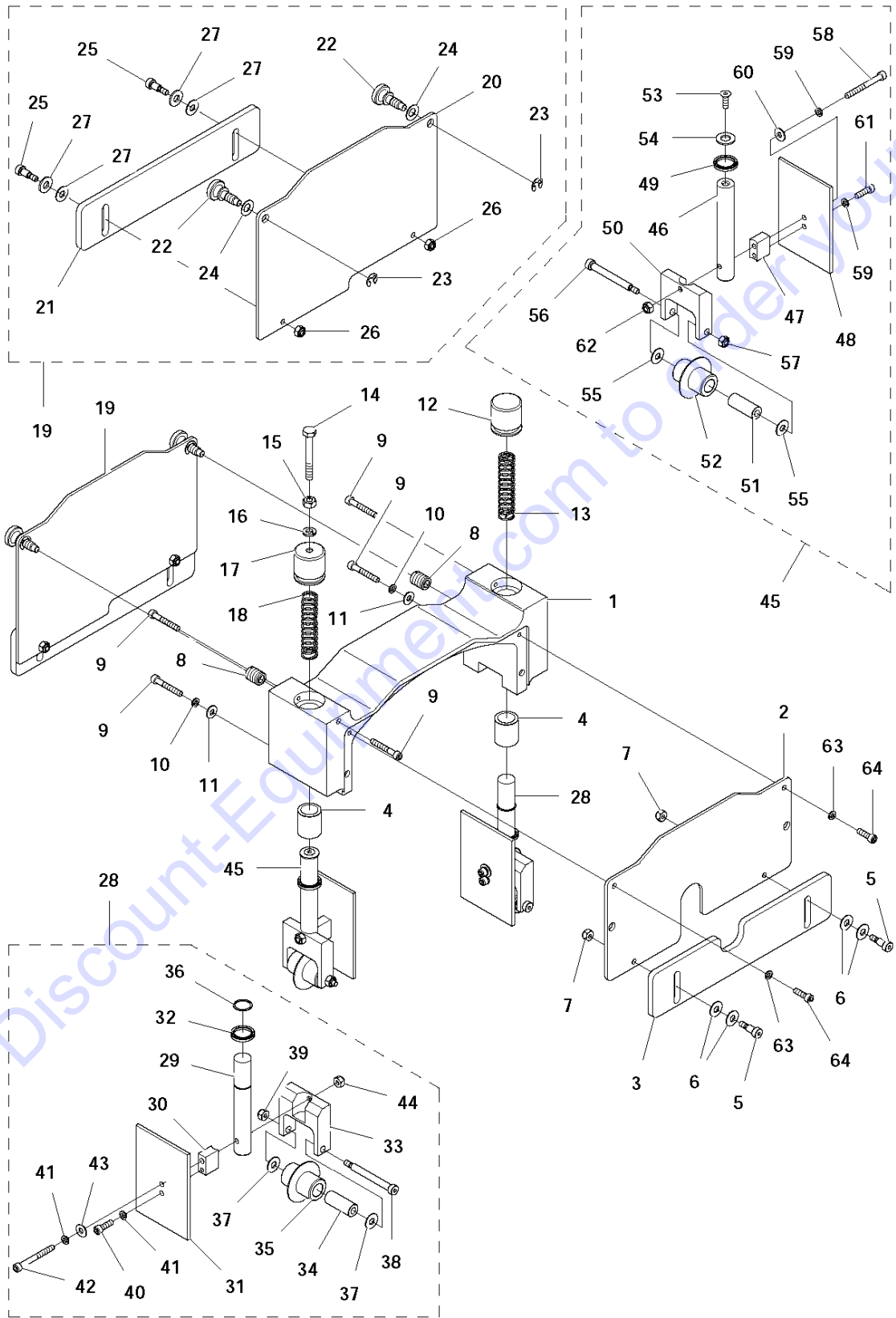
BLADE ARM

Soff-Cut 150 D, Valid from machine 2010 3000001, 2010-10

Ref	Part No	Description	Remark	QTY	KIT
1	510 27 22-11	ASSEMBLY		1	
2	505 58 84-01	BLADE SHAFT		1	1
3	505 72 76-01	HEX BOLT 3/8-16X1 1/4 CAD GR 5		4	1
4	505 57 34-01	BOLT		1	1
5	505 73 21-01	NUT		4	1
6	505 59 21-01	BELT. BLADE 3VX280		1	1
7	505 72 46-01	FLAT WASH 3/8 STL CAD		4	1
8	510 31 73-01	KEY		1	1
9	505 49 15-02	WASHER		1	1
10	505 73 10-01	LK WASH 3/8 SPLIT SS		4	1
11	505 59 32-01	1/3V265JA SHEAVE		1	1
12	505 63 01-01	SET SCREW S.S. 10-32 X 1/2		2	1
13	505 59 20-01	BLADE SHAFT BEARINGS FOR X150		2	1

Go to Discount-Equipment.com to order your parts

D Soff-Cut 150 D
BLADE BLOCK ASSEMBLY

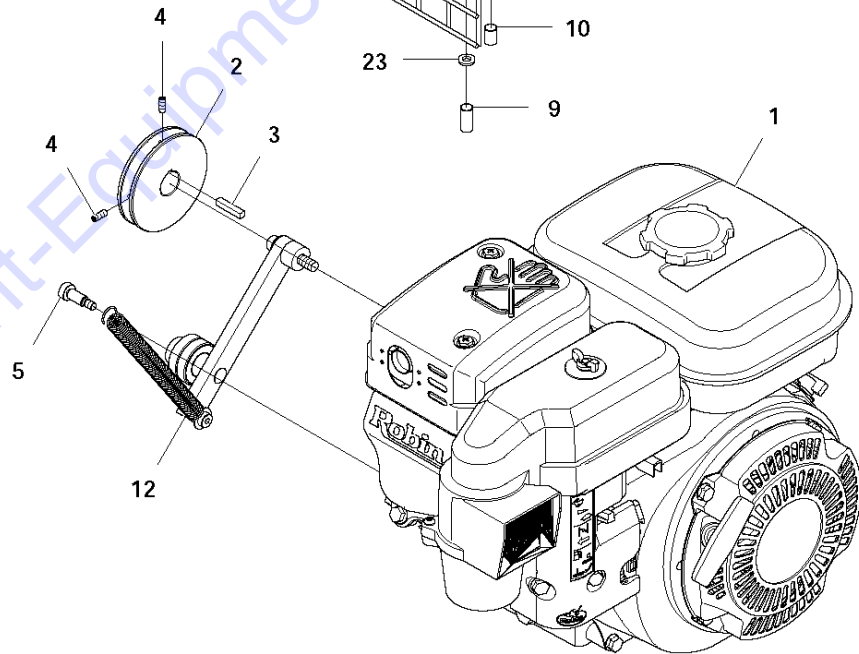
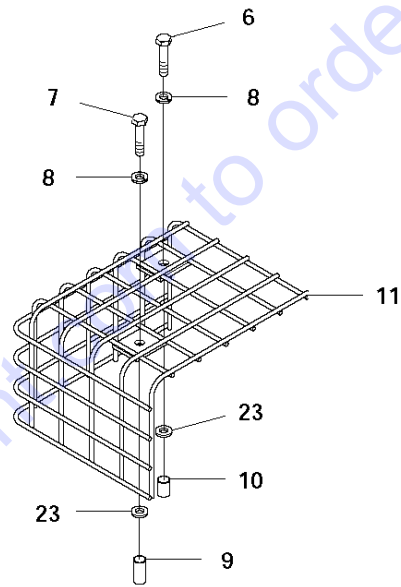
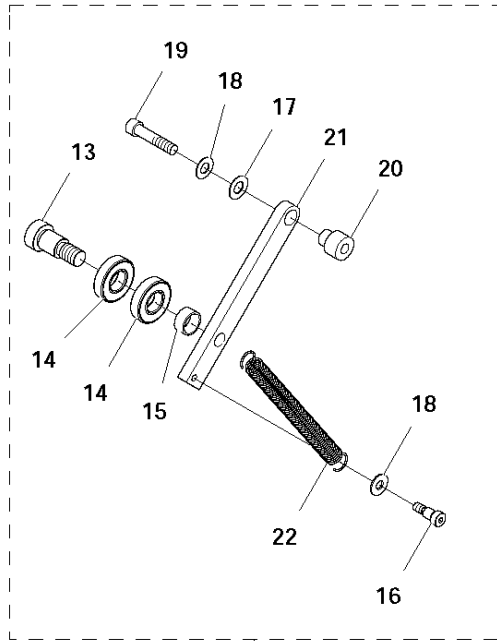


BLADE BLOCK

Soff-Cut 150 D, Valid from machine 2010 3000001, 2010-10

Ref	Part No	Description	Remark	QTY KIT
1	505 59 01-01	HOUSING. BLADE X-150D		1
2	505 58 76-01	REAR COVER. B.B. NEW		1
3	505 58 79-01	LEXAN. INNER		1
4	505 59 36-01	BRONZE BUSHING X150D		2
5	505 68 64-01	SHSB 1/4 X 3/8 BLK STL		2
6	505 63 44-01	FLAT WASHER .600 X .253 X .040		4
7	505 63 04-01	NYLOC NUT #10-24 CAD.PL.		2
8	505 74 83-01	THREADED INSERT S.S.		2
9	505 59 14-01	SHC 10-32X1 1/4 S.S.		5
10	505 63 31-01	LK WASH #10 SPLIT SS		2
11	505 63 53-01	FLAT WASH #10 S.S		2
12	505 59 08-01	CAP. BB REAR X150D		1
13	505 59 30-01	SPRING		1
14	505 72 81-01	HEX BOLT 1/4-20-2 S.S. ALL THR		1
15	505 63 19-01	JAM NUT 1/4-20 STAINLESS STEEL		1
16	505 63 28-01	LK WASH 1/4 SPLIT SS		1
17	505 59 05-01	CAP. BB X150D V-BLADE		1
18	505 59 31-01	SPRING		1
19	574 23 49-11	ASSEMBLY		1
20	505 58 74-01	FRONT COVER. B.B.		1 19
21	505 58 80-01	LEXAN. OUTER		1 19
22	505 53 63-01	KNOB		2 19
23	505 53 65-01	E-CLIP		2 19
24	505 53 64-01	WASHER		2 19
25	505 68 64-01	SHSB 1/4 X 3/8 BLK STL		2 19
26	505 63 04-01	NYLOC NUT #10-24 CAD.PL.		2 19
27	505 63 44-01	FLAT WASHER .600 X .253 X .040		4 19
28	505 87 66-01	X150D REAR B.B. ROD KIT		1
29	505 59 04-01	SHAFT		1 28
30	505 58 97-01	SPACER		1 28
31	505 59 00-01	DIVERTER. FRONT SST		1 28
32	505 59 38-01	DUST SEAL X150D		1 28
33	505 58 96-01	BLOCK. GUIDE WHEEL MOUNT		1 28
34	505 59 37-01	BRONZE BUSHING 1/4 X 1/2 X 1 1		1 28
35	505 59 02-01	GUIDE WHEEL. V-BLADE 1/8" PILO		1 28
36	505 59 24-01	RETAINING RING. .625" ID		1 28
37	505 63 44-01	FLAT WASHER .600 X .253 X .040		2 28
38	505 77 12-01	SHSB 1/4 X 2		1 28
39	505 63 04-01	NYLOC NUT #10-24 CAD.PL.		1 28
40	505 72 97-01	SHC 10-32 X 5/8 S.S.		1 28
41	505 63 31-01	LK WASH #10 SPLIT SS		2 28
42	505 59 18-01	SHC 10-32 X 1 3/4		1 28
43	505 63 53-01	FLAT WASH #10 S.S		1 28
44	505 82 22-01	NYLOC NUT 10-32 S.S.		1 28
45	505 87 65-01	X150D FRONT B.B. ROD KIT		1
46	505 59 03-01	SHAFT		1 45
47	505 58 97-01	SPACER		1 45
48	505 59 00-01	DIVERTER. FRONT SST		1 45
49	505 59 38-01	DUST SEAL X150D		1 45
50	505 58 96-01	BLOCK. GUIDE WHEEL MOUNT		1 45
51	505 59 37-01	BRONZE BUSHING 1/4 X 1/2 X 1 1		1 45
52	505 59 02-01	GUIDE WHEEL. V-BLADE 1/8" PILO		1 45
53	505 72 99-01	FHS 10-32-1/2 S.S.		1 45
54	734 11 54-41	WASHER		1 45
55	505 63 44-01	FLAT WASHER .600 X .253 X .040		2 45
56	505 77 12-01	SHSB 1/4 X 2		1 45
57	505 63 04-01	NYLOC NUT #10-24 CAD.PL.		1 45
58	505 59 18-01	SHC 10-32 X 1 3/4		1 45
59	505 63 31-01	LK WASH #10 SPLIT SS		2 45
60	505 63 53-01	FLAT WASH #10 S.S		1 45
61	505 82 22-01	NYLOC NUT 10-32 S.S.		1 45
62	505 72 97-01	SHC 10-32 X 5/8 S.S.		1 45
63	505 63 31-01	LK WASH #10 SPLIT SS		2
64	505 72 97-01	SHC 10-32 X 5/8 S.S.		2

A Soff-Cut 150 D
ENGINE ASSEMBLY



Go to Discount-Equipment.com to order your parts

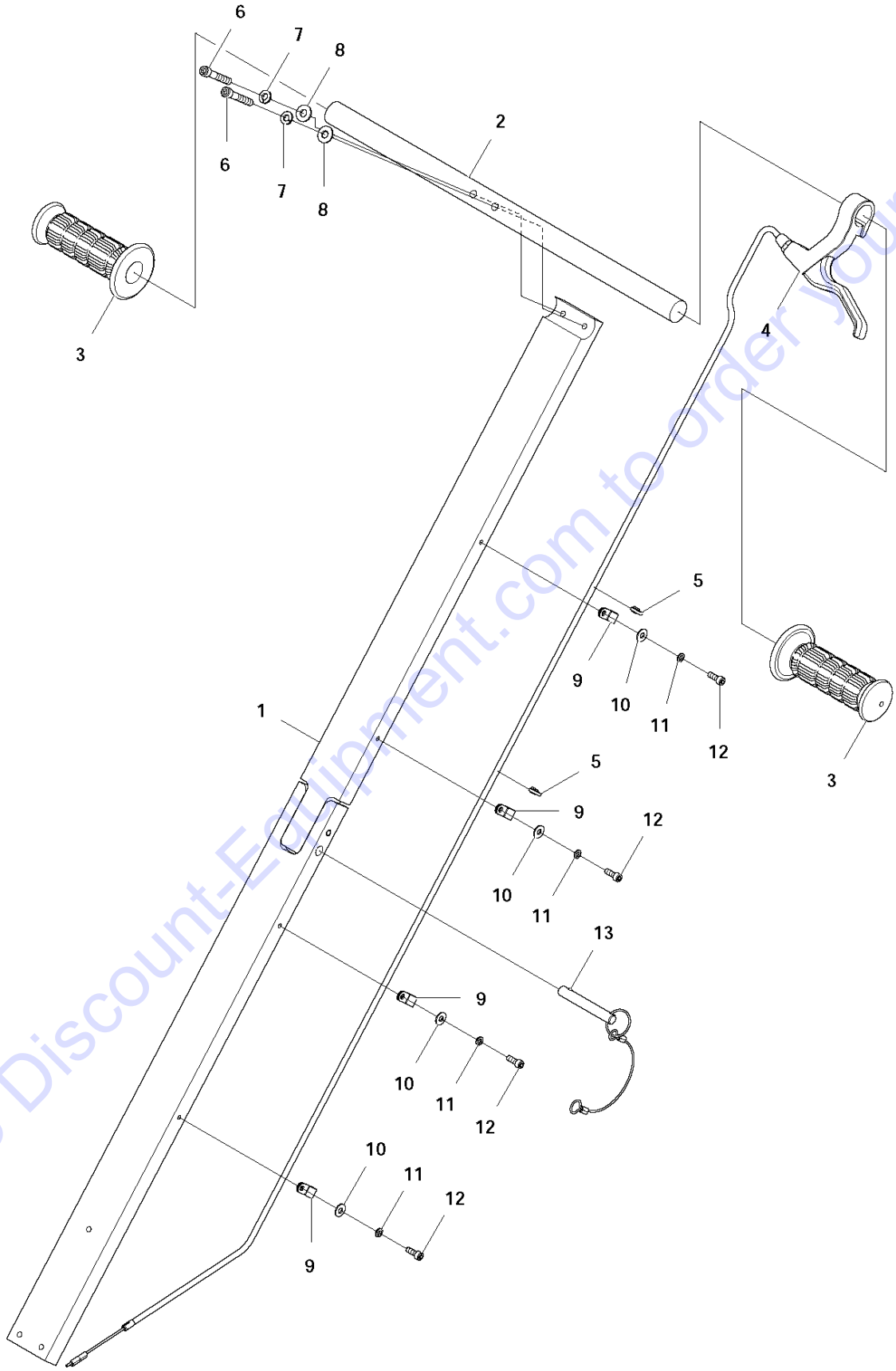
ENGINE

Soff-Cut 150 D, Valid from machine 2010 3000001, 2010-10

Ref	Part No	Description	Remark	QTY	KIT
1	505 59 39-01	X150 ENGINE		1	
2	505 59 33-01	1/3V315JA SHEAVE		1	
3	510 31 73-01	KEY		1	
4	505 63 01-01	SET SCREW S.S. 10-32 X 1/2		2	
5	505 59 15-01	SHSB M8 X 16		1	
6	725 23 74-71	SCREW EHHM		1	
7	725 23 76-71	SCREW EHHM		1	
8	505 63 28-01	LK WASH 1/4 SPLIT SS		2	
9	505 68 44-01	3/8 O.D. X .770 LONG X .028 WA		1	
10	510 34 61-01	SPACER. 5/16" ID X .500" L		1	
11	505 84 16-01	MUFFLER GUARD		1	
12	510 27 17-11	ASSEMBLY		1	
13	505 72 62-01	SHSB 5/8 X 3/4 BLK STL		1	12
14	505 73 60-01	IDLER PULLEYS BLK SEAL SGL LIP		2	12
15	505 71 46-02	SPACER		1	12
16	505 72 65-01	SHSB 5/16 X 3/8 BLK STL		1	12
17	505 63 45-01	FLAT WSHR .750X.379 X.031 DEL		1	12
18	505 72 52-01	.625 X .312 X .032 SS WASHER F		2	12
19	505 59 19-01	SHC 5/16-24 X 1 1/2 S.S.		1	12
20	505 58 90-01	SPACER		1	12
21	505 58 73-01	IDLER ARM		1	12
22	505 73 79-01	SPRING		1	12
23	505 63 20-01	FLAT WASHER 1/4 X .062 AN960C4		2	

Go to Discount-Equipment.com to order your parts

F Soff-Cut 150 D
HANDLE ASSEMBLY



Go to Discount-Equipment.com to order your parts

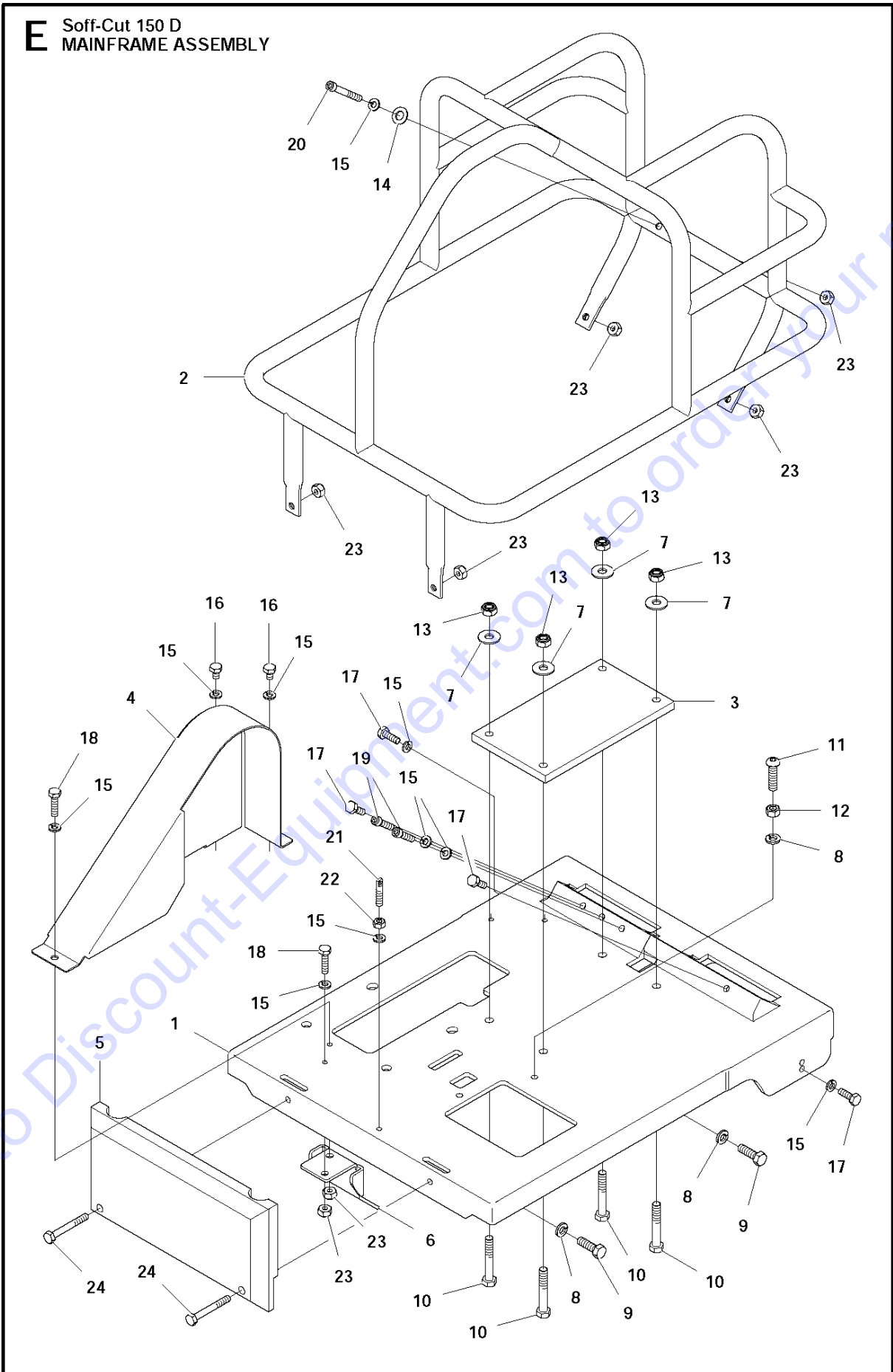
HANDLE

Soff-Cut 150 D, Valid from machine 2010 3000001, 2010-10

Ref	Part No	Description	Remark	QTY KIT
1	505 87 58-01	X150 HANDLES UPPER/LOWER		1
2	505 58 83-01	HANDLE TUBE		1
3	505 60 11-01	HANDLE GRIP		2
4	505 48 27-01	CABLE		1
5	510 33 17-01	TIE WRAP		2
6	505 72 88-01	SHC 1/4-20-1 1/2 S.S.		2
7	505 63 28-01	LK WASH 1/4 SPLIT SS		2
8	505 63 20-01	FLAT WASHER 1/4 X .062 AN960C4		2
9	587 05 74-01	CABLE CLAMP		4
10	505 63 53-01	FLAT WASH #10 S.S		4
11	505 63 31-01	LK WASH #10 SPLIT SS		4
12	505 72 97-01	SHC 10-32 X 5/8 S.S.		4
13	574 71 98-01	KIT		1

Go to Discount-Equipment.com to order your parts

E Soff-Cut 150 D
MAINFRAME ASSEMBLY



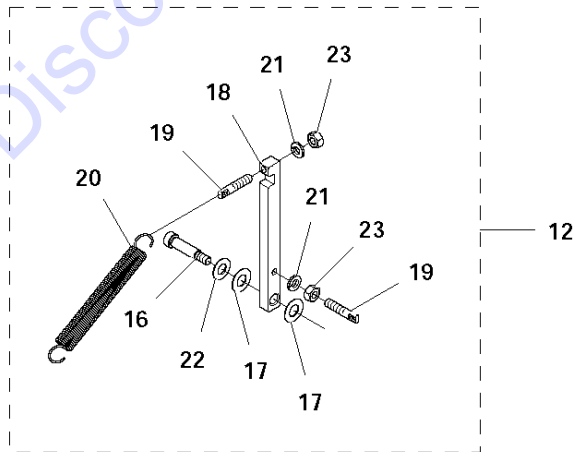
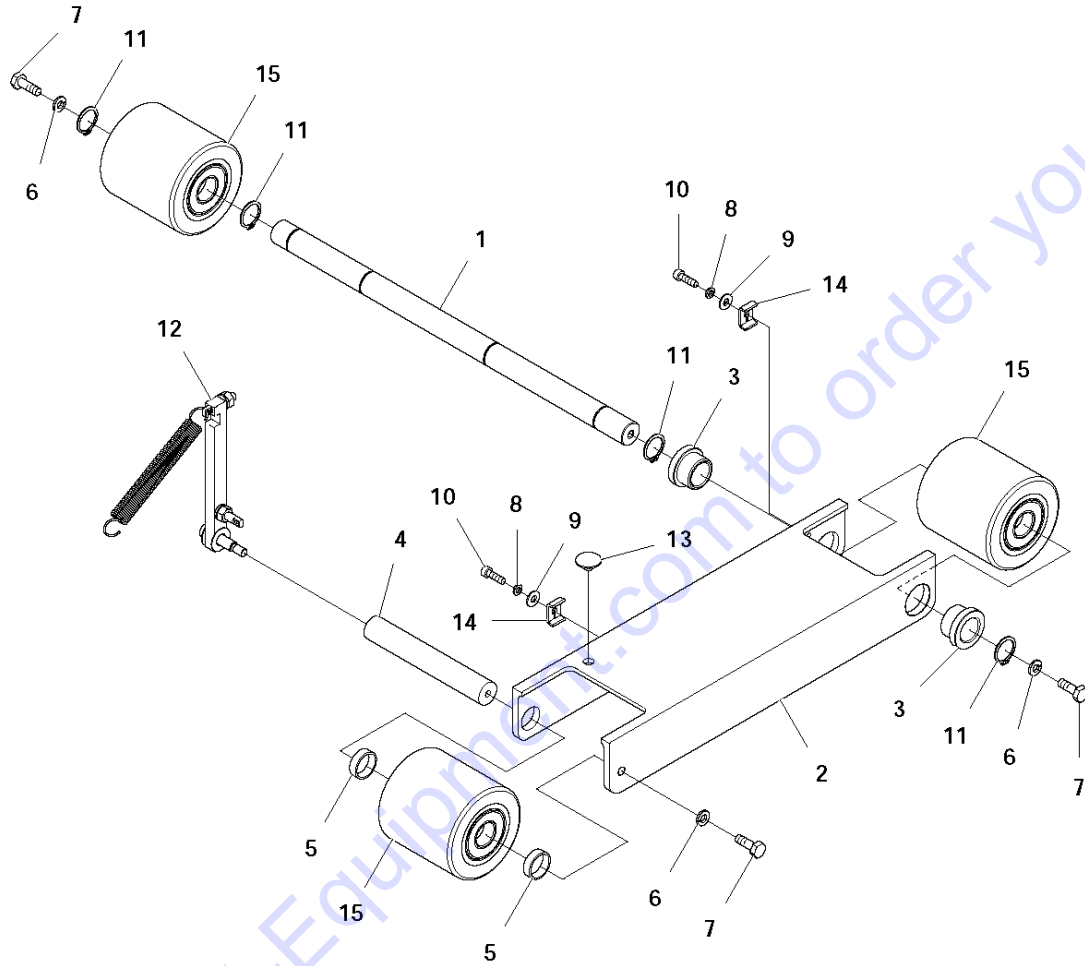
MAINFRAME

Soff-Cut 150 D, Valid from machine 2010 3000001, 2010-10

Ref	Part No	Description	Remark	QTY KIT
1	505 58 65-01	BOTTOM PLATE		1
2	505 58 66-01	ROLL CAGE		1
3	505 65 54-01	MOTOR BUSHING		1
4	505 60 13-01	BELT GUARD		1
5	505 58 98-01	PLATE. WEIGHT X-150D DECO SAW		1
6	505 58 95-01	PULLEY COVER		1
7	505 68 61-01	FLAT WASH 5/16 USS ENGINE/BIG		4
8	505 63 30-01	LK WASH 5/16 SPLIT SS		3
9	505 72 75-01	HEX BOLT 5/16-18-1 CAD GR 5		2
10	505 68 77-01	HEX BOLT 5/16-18 X 2 GRADE 8		4
11	505 62 97-01	BHS 5/16-18-1 1/4 S.S.		1
12	505 73 24-01	NUT		1
13	505 63 06-01	NYLOC NUT 5/16-18 CAD PL.		4
14	505 63 20-01	FLAT WASHER 1/4 X .062 AN960C4		2
15	505 63 28-01	LK WASH 1/4 SPLIT SS		10
16	505 62 73-01	HEX BOLT 1/4-20-3/8 S.S.		2
17	505 62 75-01	HEX BOLT 1/4-20-3/4 S.S.		4
18	505 72 73-01	HEX BOLT 1/4-20-1 STAINLESS ST		2
19	505 62 80-01	SHC 1/4-20-1 1/4 S.S.		2
20	505 72 89-01	SHC 1/4-20-2 S.S.		1
21	505 77 45-01	SPRING ANCHORS		1
22	505 63 19-01	JAM NUT 1/4-20 STAINLESS STEEL		2
23	505 63 05-01	NYLOC NUT 1/4-20 CAD PL.		5
24	505 72 81-01	HEX BOLT 1/4-20-2 S.S. ALL THR		2

Go to Discount-Equipment.com to order your parts

C Soff-Cut 150 D
WHEEL CARRIAGE ASSEMBLY



Go to Discount-Equipment.com to order your parts

WHEELS & TIRES

Soff-Cut 150 D, Valid from machine 2010 3000001, 2010-10

Ref	Part No	Description	Remark	QTY	KIT
1	505 58 67-01	REAR AXLE		1	
2	505 58 68-01	FRAME. FRONT WHEEL CARRIAGE		1	
3	505 58 69-01	BUSHING		2	
4	505 58 81-01	FRONT AXLE		1	
5	505 58 89-01	SPACER		2	
6	505 63 28-01	LK WASH 1/4 SPLIT SS		3	
7	505 62 75-01	HEX BOLT 1/4-20-3/4 S.S.		3	
8	505 63 31-01	LK WASH #10 SPLIT SS		2	
9	505 63 53-01	FLAT WASH #10 S.S		2	
10	505 72 97-01	SHC 10-32 X 5/8 S.S.		2	
11	505 73 35-01	SNAP RING		4	
12	510 27 27-11	ASSEMBLY		1	
13	505 62 53-01	S.S. BUTTON *****		1	
14	505 64 89-01	BOLT		2	
15	505 86 34-01	G1000 FRONT WHEEL		3	
16	505 72 67-01	SHSB 5/16 X 1 BLK STL		1	12
17	505 63 45-01	FLAT WSHR .750X.379 X.031 DEL		2	12
18	505 58 70-01	BLADE RELEASE LEVER		1	12
19	505 77 45-01	SPRING ANCHORS		2	12
20	505 73 79-01	SPRING		1	12
21	505 63 28-01	LK WASH 1/4 SPLIT SS		2	12
22	505 72 52-01	.625 X .312 X .032 SS WASHER F		1	12
23	505 63 19-01	JAM NUT 1/4-20 STAINLESS STEEL		2	12

Go to Discount-Equipment.com to order your parts

PARTS FINDER

**Search Website
by Part Number**



**Search Manual
Library For Parts
Manual & Lookup Part
Numbers – Purchase
or Request Quote**

Search Manuals

Enter your information to help us find the right parts manual for your machine.

* Brand:

* Model:

* Serial:

* Part Number:

SEARCH

**Can't Find Part or
Manual? Request Help
by Manufacturer,
Model & Description**

Parts Order Form

Please fill in the following information to help us find the right part for your machine.

Manufacturer:	<input type="text"/>
Model:	<input type="text"/>
Description:	<input type="text"/>
Part Number:	<input type="text"/>
Quantity:	<input type="text"/>
Notes:	<input type="text"/>

Discount-Equipment.com is your online resource for quality parts & equipment.

Florida: **561-964-4949** Outside Florida TOLL FREE: **877-690-3101**

Need parts?

Click on this link: <http://www.discount-equipment.com/category/5443-parts/> and choose one of the options to help get the right parts and equipment you are looking for. Please have the machine model and serial number available in order to help us get you the correct parts. If you don't find the part on the website or on one of the online manuals, please fill out the request form and one of our experienced staff members will get back to you with a quote for the right part that your machine needs.

We sell worldwide for the brands: Genie, Terex, JLG, MultiQuip, Mikasa, Essick, Whiteman, Mayco, Toro Stone, Diamond Products, Generac Magnum, Airman, Haulotte, Barreto, Power Blanket, Nifty Lift, Atlas Copco, Chicago Pneumatic, Allmand, Miller Curber, Skyjack, Lull, Skytrak, Tsurumi, Husquvarna Target, Stow, Wacker, Sakai, Mi-T-M, Sullair, Basic, Dynapac, MBW, Weber, Bartell, Bennar Newman, Haulotte, Ditch Runner, Menegotti, Morrison, Contec, Buddy, Crown, Edco, Wyco, Bomag, Laymor, EZ Trench, Bil-Jax, F.S. Curtis, Gehl Pavers, Heli, Honda, ICS/PowerGrit, IHI, Partner, Imer, Clipper, MMD, Koshin, Rice, CH&E, General Equipment, Amida, Coleman, NAC, Gradall, Square Shooter, Kent, Stanley, Tamco, Toku, Hatz, Kohler, Robin, Wisconsin, Northrock, Oztec, Toker TK, Rol-Air, APT, Wylie, Ingersoll Rand / Doosan, Innovatech, Con X, Ammann, Mecalac, Makinex, Smith Surface Prep, Small Line, Wanco, Yanmar