



# SPARE PARTS LIST

EARLY ENTRY SAWS

Soff-Cut 150, 2015-02

Go to [Discount-Equipment.com](http://Discount-Equipment.com) to order your parts



# PARTS FINDER

**Search Website  
by Part Number**



**Search Manual  
Library For Parts  
Manual & Lookup Part  
Numbers – Purchase  
or Request Quote**

**Search Manuals**

Enter your information to help us find the right parts manual for your machine.

\* Brand:

\* Model:

\* Serial:

\* Part Number:

SEARCH

**Can't Find Part or  
Manual? Request Help  
by Manufacturer,  
Model & Description**

**Parts Order Form**

Please fill in the following information to help us find the right part for your machine.

Manufacturer:	<input type="text"/>
Model:	<input type="text"/>
Description:	<input type="text"/>
Part Number:	<input type="text"/>
Quantity:	<input type="text"/>
Notes:	<input type="text"/>

Submit

Discount-Equipment.com is your online resource for quality parts & equipment.

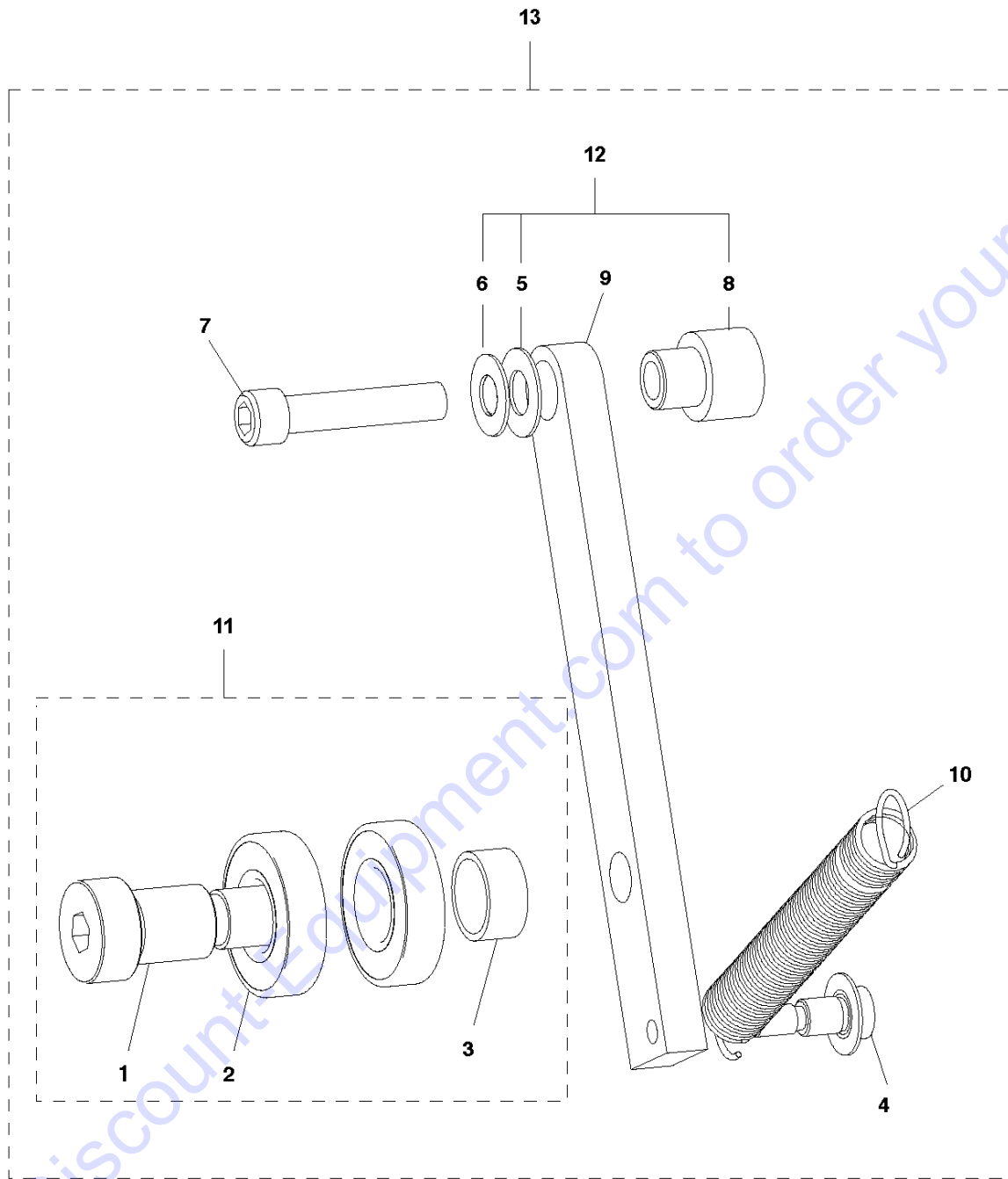
Florida: **561-964-4949** Outside Florida TOLL FREE: **877-690-3101**

**Need parts?**

Click on this link: <http://www.discount-equipment.com/category/5443-parts/> and choose one of the options to help get the right parts and equipment you are looking for. Please have the machine model and serial number available in order to help us get you the correct parts. If you don't find the part on the website or on one of the online manuals, please fill out the request form and one of our experienced staff members will get back to you with a quote for the right part that your machine needs.

We sell worldwide for the brands: Genie, Terex, JLG, MultiQuip, Mikasa, Essick, Whiteman, Mayco, Toro Stone, Diamond Products, Generac Magnum, Airman, Haulotte, Barreto, Power Blanket, Nifty Lift, Atlas Copco, Chicago Pneumatic, Allmand, Miller Curber, Skyjack, Lull, Skytrak, Tsurumi, Husquvarna Target, Stow, Wacker, Sakai, Mi-T-M, Sullair, Basic, Dynapac, MBW, Weber, Bartell, Bennar Newman, Haulotte, Ditch Runner, Menegotti, Morrison, Contec, Buddy, Crown, Edco, Wyco, Bomag, Laymor, EZ Trench, Bil-Jax, F.S. Curtis, Gehl Pavers, Heli, Honda, ICS/PowerGrit, IHI, Partner, Imer, Clipper, MMD, Koshin, Rice, CH&E, General Equipment, Amida, Coleman, NAC, Gradall, Square Shooter, Kent, Stanley, Tamco, Toku, Hatz, Kohler, Robin, Wisconsin, Northrock, Oztec, Toker TK, Rol-Air, APT, Wylie, Ingersoll Rand / Doosan, Innovatech, Con X, Ammann, Mecalac, Makinex, Smith Surface Prep, Small Line, Wanco, Yanmar

**B** SOFF CUT X150  
BELT TENSIONER



Go to DiscountEquipment.com to order your parts

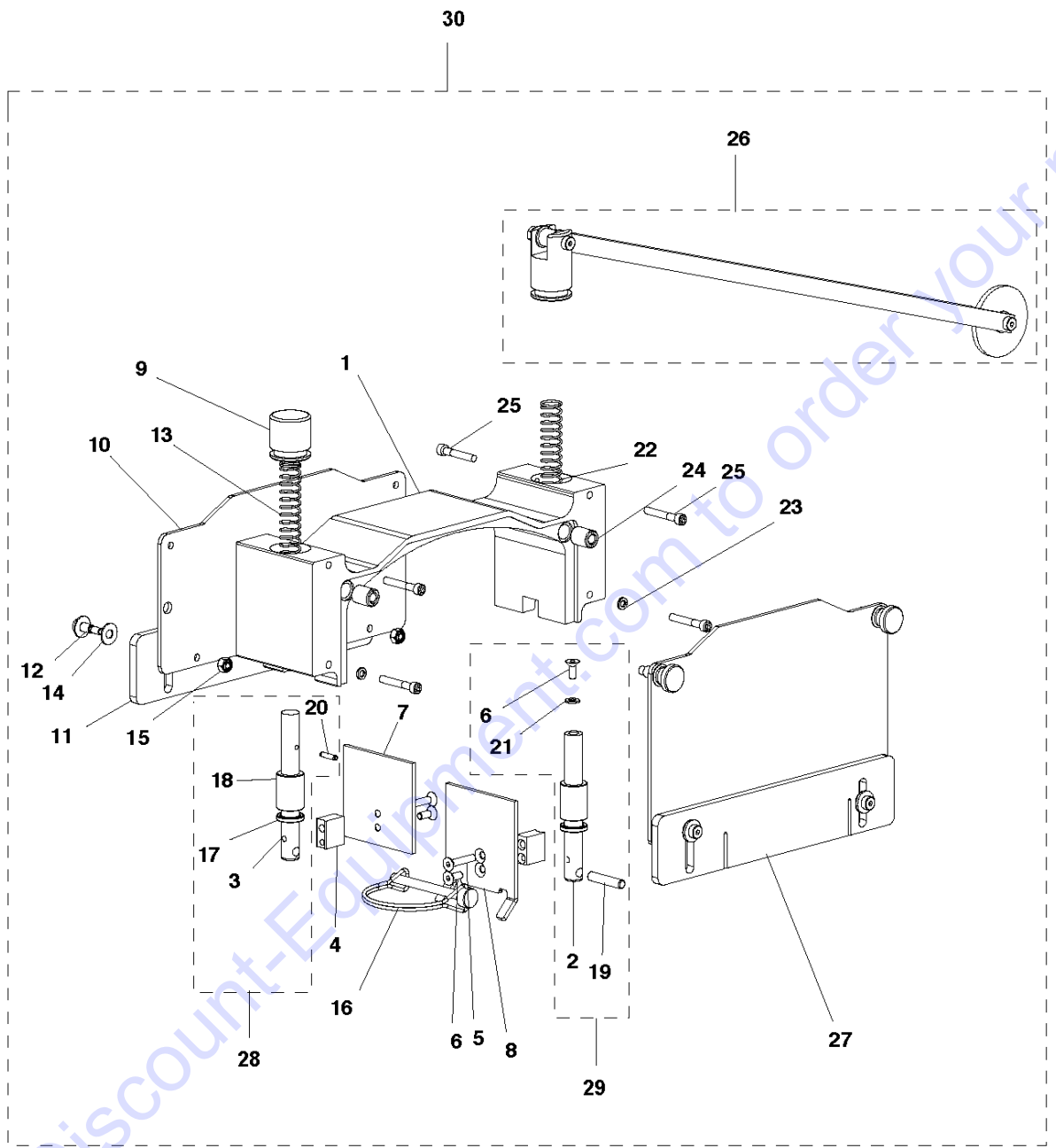
## BELT

Soff-Cut 150, 2015-02

Ref	Part No	Description	Remark	QTY	KIT
1	505 72 62-01	SHSB 5/8 X 3/4 BLK STL		1	11
2	505 73 60-01	IDLER PULLEYS BLK SEAL SGL LIP		2	11
3	505 71 46-02	SPACER		1	11
4	505 72 65-01	SHSB 5/16 X 3/8 BLK STL		1	
5	505 63 45-01	FLAT WSHR .750X.379 X.031 DEL		1	12
6	505 72 52-01	.625 X .312 X .032 SS WASHER F		2	12
7	505 59 19-01	SHC 5/16-24 X 1 1/2 S.S.		1	
8	505 58 90-01	SPACER		1	12
9	505 58 73-01	IDLER ARM		1	
10	505 73 79-01	SPRING		1	
11	505 85 66-01	X150 BELT TENSIONER PULLEY KIT		1	
12	505 85 65-01	X150 BELT TENSIONER ARM KIT		1	
13	505 87 59-01	X150 BELT TENSIONER COMPLETE	Complete		

Go to [Discount-Equipment.com](http://Discount-Equipment.com) to order your parts

**G** SOFF CUT X150  
BLADE BLOCK ASSEMBLY



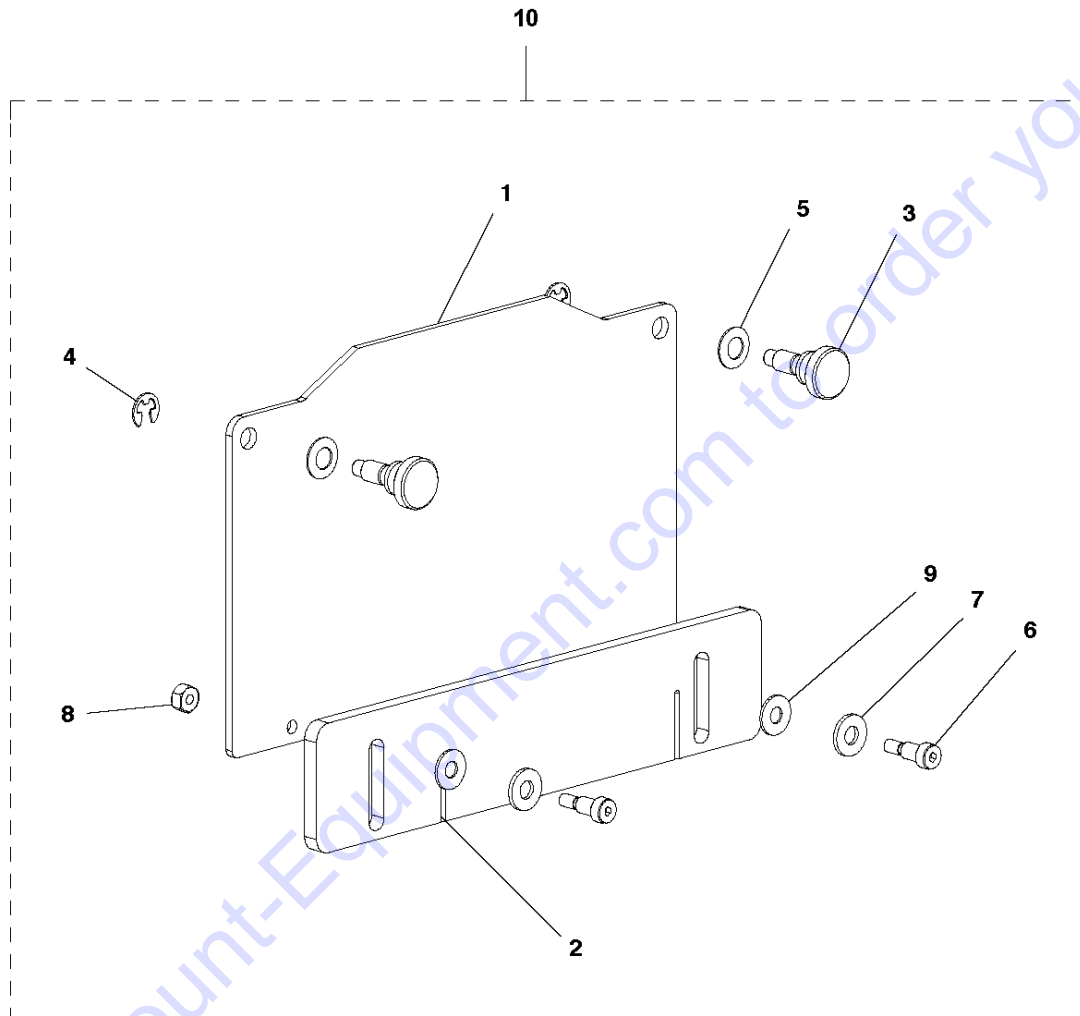
## BLADE BLOCK

Soff-Cut 150, 2015-02

Ref	Part No	Description	Remark	QTY	KIT
1	505 58 78-01	BLADE BLOCK		1	
2	505 58 82-01	FRONT SHAFT. B.B.		1	29
3	505 58 85-01	REAR SHAFT. B.B.		1	28
4	505 58 88-01	SPACER		2	
5	505 73 00-01	FHS 10-32-1 S.S.		2	
6	505 72 99-01	FHS 10-32-1/2 S.S.		3	
7	505 58 77-01	REAR DIVERTER		1	
8	510 33 77-01	PLATE		1	
9	505 58 86-01	CAP BLD. BLOCK SHAFT		1	
10	505 58 76-01	REAR COVER. B.B. NEW		1	
11	505 58 79-01	LEXAN. INNER		1	
12	505 68 64-01	SHSB 1/4 X 3/8 BLK STL		2	
13	505 59 30-01	SPRING		1	
14	505 63 44-01	FLAT WASHER .600 X .253 X .040		4	
15	505 63 04-01	NYLOC NUT #10-24 CAD.PL.		2	
16	505 77 54-01	SNAPPER PIN 1/4 X 2 1/2		1	
17	505 59 35-01	DUST SEAL X150		2	28
18	505 59 34-01	BRONZE BUSHING X150 B.B.		2	28
19	505 77 40-01	PRECISION DOW PIN 1/4 X 1 1/4		1	29
20	505 59 27-01	ROLL PIN 1/8" X 9/16"		1	
21	734 11 46-01	WASHER		1	
22	505 59 31-01	SPRING		1	
23	505 63 31-01	LK WASH #10 SPLIT SS		2	
24	505 74 83-01	THREADED INSERT S.S.		2	
25	505 59 14-01	SHC 10-32X1 1/4 S.S.		4	
26	505 87 63-01	GUIDE ARM. X150		1	
27	505 85 67-01	X150 BLADE BLOCK COVER		1	
28	505 87 62-01	B.B. REAR SHAFT. X150		1	
29	505 85 67-01	X150 BLADE BLOCK COVER		1	
30	505 85 67-01	X150 BLADE BLOCK COVER	Complete		

Go to Discount-Equipment.com to order your parts

**H** SOFF CUT X150  
BLADE BLOCK COVER



Go to Discount-Equipment.com to order your parts

## BLADE BLOCK COVER

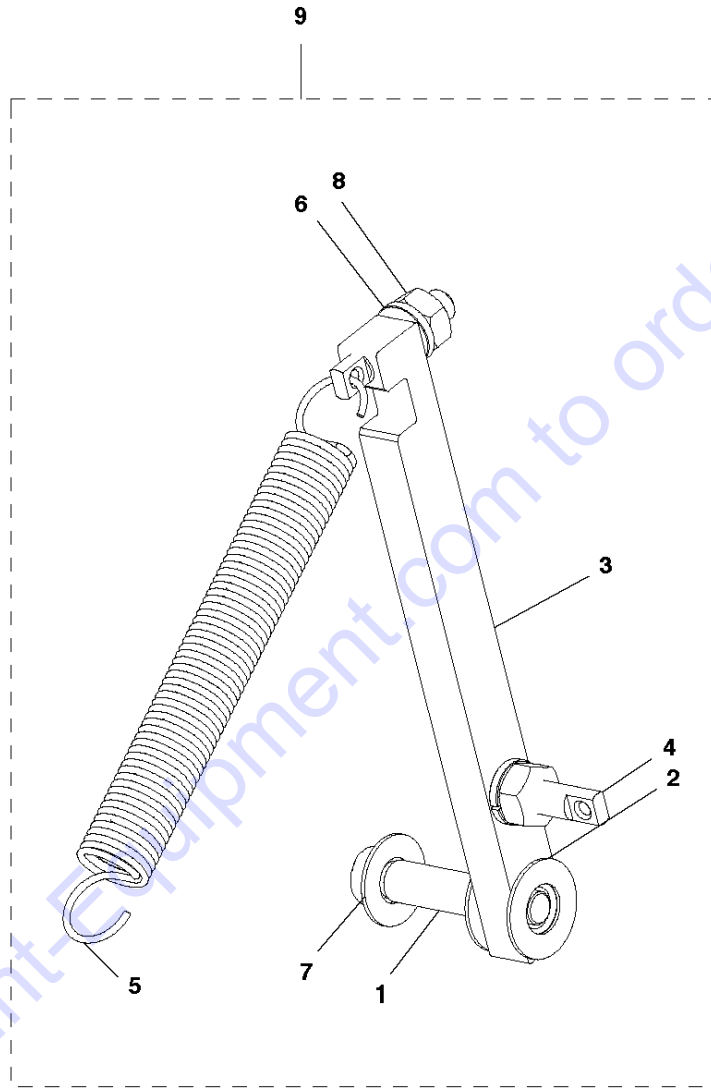
Soff-Cut 150, 2015-02

Ref	Part No	Description	Remark	QTY KIT
1	505 58 74-01	FRONT COVER. B.B.		1
2	505 58 80-01	LEXAN. OUTER		1
3	505 53 63-01	KNOB		2
4	505 53 65-01	E-CLIP		2
5	505 53 64-01	WASHER		2
6	505 68 64-01	SHSB 1/4 X 3/8 BLK STL		2
7	505 63 20-01	FLAT WASHER 1/4 X .062 AN960C4		2
8	505 63 04-01	NYLOC NUT #10-24 CAD.PL.		2
9	505 63 44-01	FLAT WASHER .600 X .253 X .040		2
10	505 85 67-01	X150 BLADE BLOCK COVER	Complete	

Go to [Discount-Equipment.com](http://Discount-Equipment.com) to order your parts



**E** SOFF CUT X150  
BLADE RELEASE ARM



Go to Discount-Equipment.com to order your parts

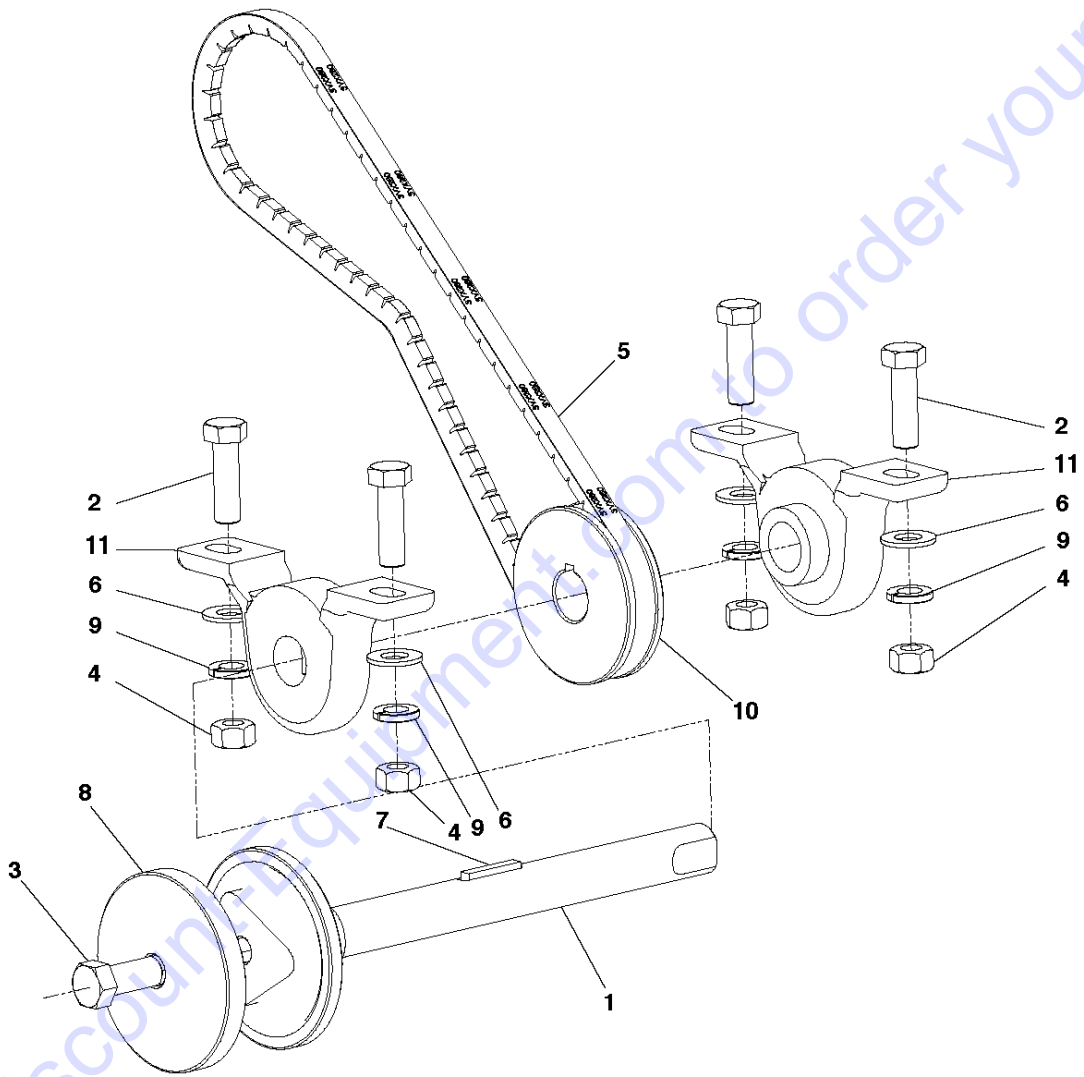
## BLADE RELEASE ARM

Soff-Cut 150, 2015-02

Ref	Part No	Description	Remark	QTY KIT
1	505 72 67-01	SHSB 5/16 X 1 BLK STL		1
2	505 63 45-01	FLAT WSHR .750X.379 X.031 DEL		2
3	505 58 70-01	BLADE RELEASE LEVER		1
4	505 77 45-01	SPRING ANCHORS		2
5	505 73 79-01	SPRING		1
6	505 63 28-01	LK WASH 1/4 SPLIT SS		2
7	505 72 52-01	.625 X .312 X .032 SS WASHER F		1
8	505 63 19-01	JAM NUT 1/4-20 STAINLESS STEEL		2
9	510 27 27-11	ASSEMBLY	Complete	

Go to [Discount-Equipment.com](http://Discount-Equipment.com) to order your parts

**C** SOFF CUT X150  
BLADE SHAFT ASSEMBLY



Go to DiscountEquipment.com to order your parts

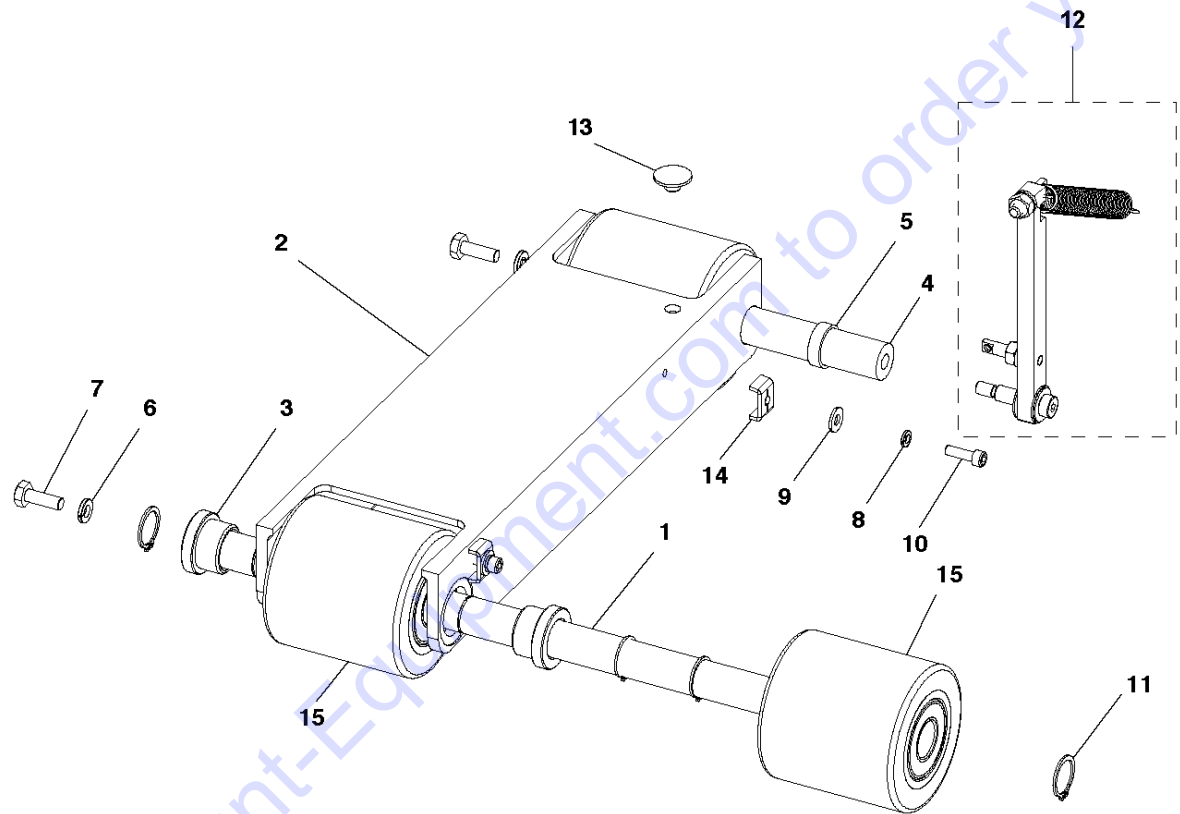
## BLADE SHAFT

Soff-Cut 150, 2015-02

Ref	Part No	Description	Remark	QTY KIT
1	505 58 84-01	BLADE SHAFT		1
2	539 97 69-41	SCREW		4
3	505 57 34-01	BOLT		1
4	539 99 01-30	NUT		4
5	541 20 15-69	V-BELT		1
6	539 99 05-17	WASHER		4
7	510 31 73-01	KEY		1
8	505 49 15-02	WASHER		1
9	505 73 10-01	LK WASH 3/8 SPLIT SS		4
10	505 59 32-01	1/3V265JA SHEAVE		1
11	505 59 20-01	BLADE SHAFT BEARINGS FOR X150		2

Go to [Discount-Equipment.com](http://Discount-Equipment.com) to order your parts

**D** SOFF CUT X150  
WHEEL CARRIAGE ASSEMBLY



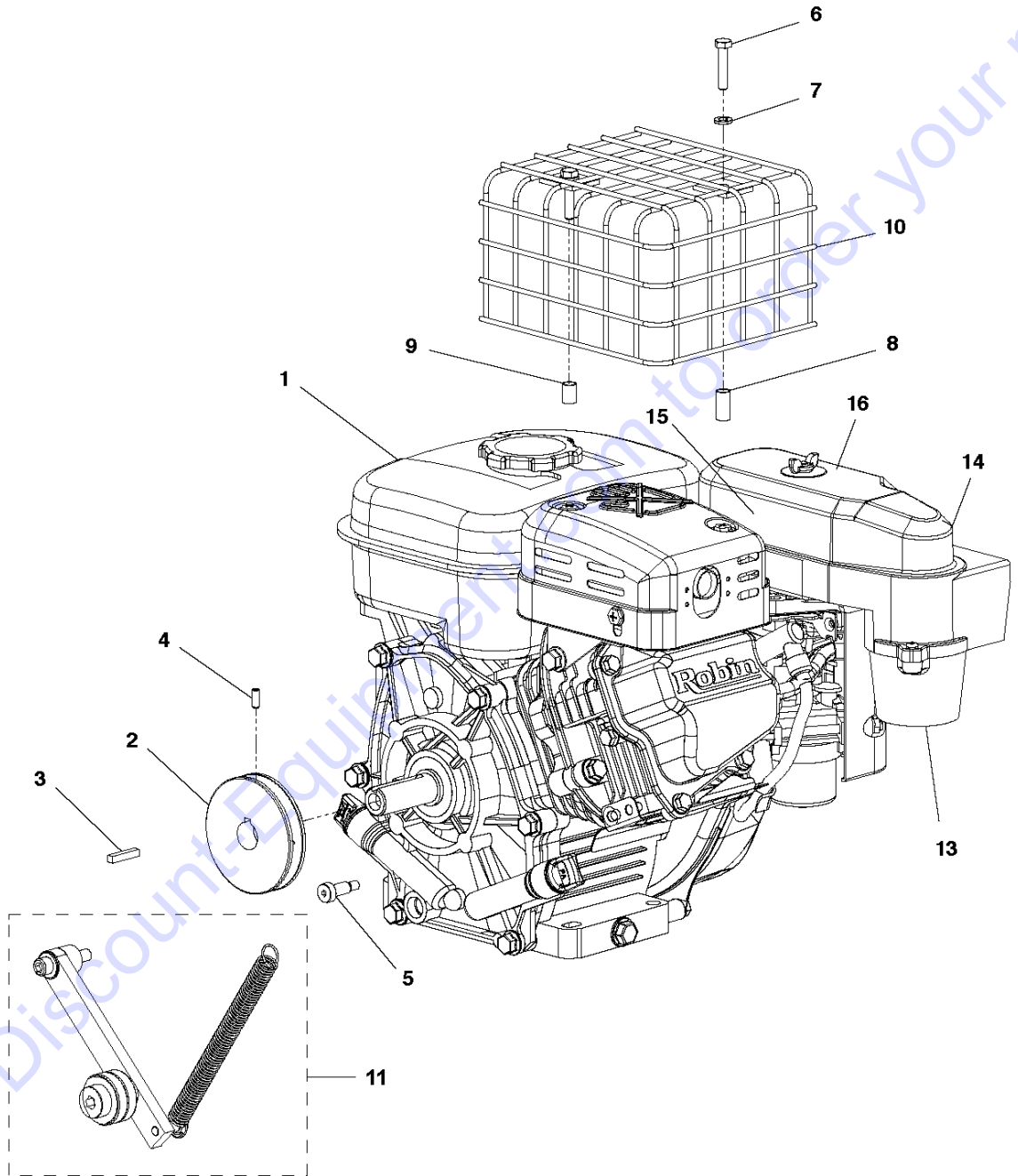
## CARRIAGE

Soff-Cut 150, 2015-02

Ref	Part No	Description	Remark	QTY KIT
1	505 58 67-01	REAR AXLE		1
2	505 58 68-01	FRAME. FRONT WHEEL CARRIAGE		1
3	505 58 69-01	BUSHING		2
4	505 58 81-01	FRONT AXLE		1
5	505 58 89-01	SPACER		2
6	505 63 28-01	LK WASH 1/4 SPLIT SS		2
7	505 62 75-01	HEX BOLT 1/4-20-3/4 S.S.		2
8	505 63 31-01	LK WASH #10 SPLIT SS		2
9	505 63 53-01	FLAT WASH #10 S.S		2
10	505 72 97-01	SHC 10-32 X 5/8 S.S.		2
11	505 73 35-01	SNAP RING		4
12	510 27 27-11	ASSEMBLY		1
13	505 62 53-01	S.S. BUTTON *****		1
14	505 64 89-01	BOLT		2
15	505 86 34-01	G1000 FRONT WHEEL		3

Go to Discount-Equipment.com to order your parts

**A** SOFF CUT X150  
SUB ASSEMBLY



## ENGINE

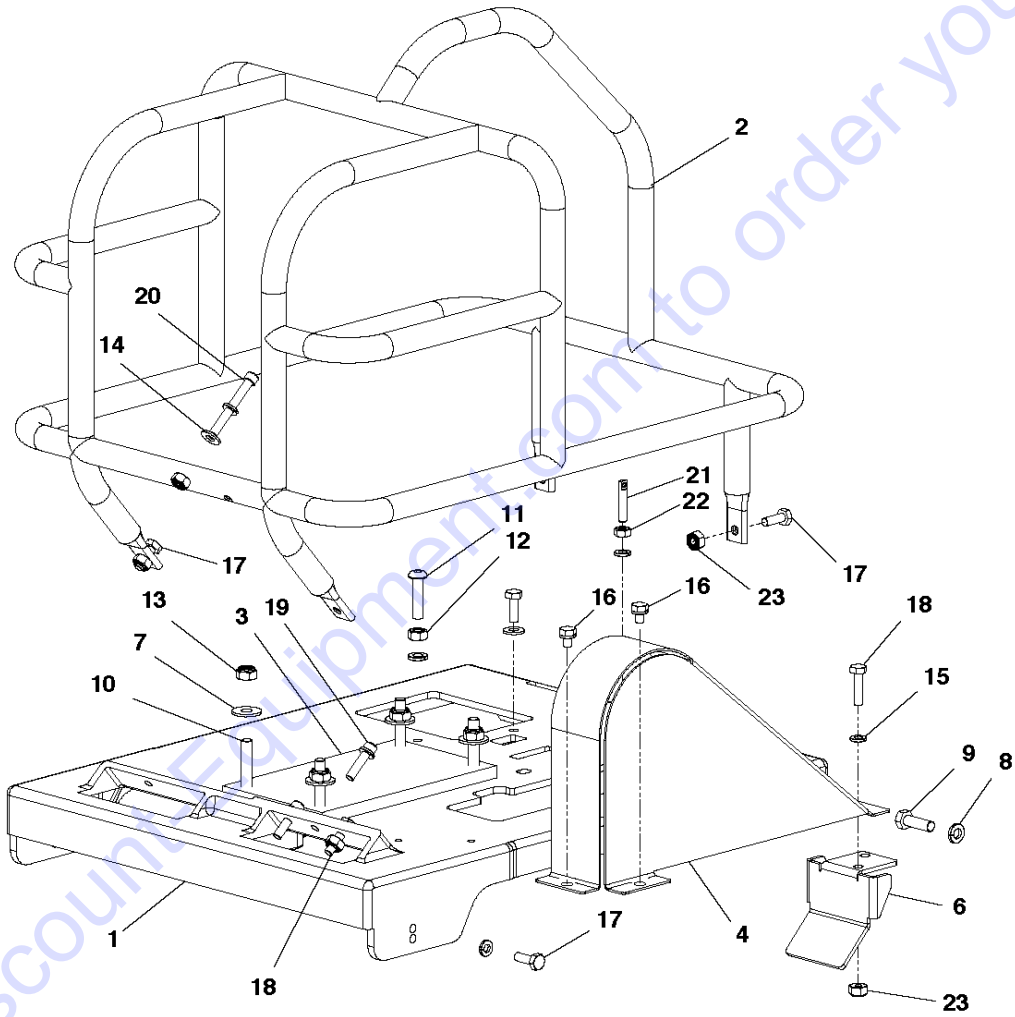
Soff-Cut 150, 2015-02

Ref	Part No	Description	Remark	QTY KIT
1	505 59 39-01	X150 ENGINE		1
2	505 59 33-01	1/3V315JA SHEAVE		1
3	510 31 73-01	KEY		1
4	505 63 01-01	SET SCREW S.S. 10-32 X 1/2		2
5	505 59 15-01	SHSB M8 X 16		1
6	725 23 74-51	SCREW EHHM		2
7	505 63 28-01	LK WASH 1/4 SPLIT SS		2
8	505 68 44-01	3/8 O.D. X .770 LONG X .028 WA		1
9	510 34 61-01	SPACER. 5/16" ID X .500" L		1
10	505 84 16-01	MUFFLER GUARD		1
11	505 87 59-01	X150 BELT TENSIONER COMPLETE		1
13	505 60 06-01	ROTARY BLADE. CUP		1
14	505 89 01-01	X150 CYCLONE COVER	Complete Cover	1
15	505 59 94-01	AIR FILTER		1
16	505 59 40-01	RECOIL STARTER		1

Go to [Discount-Equipment.com](http://Discount-Equipment.com) to order your parts



**K** SOFF CUT X150  
MAIN FRAME ASSEMBLY



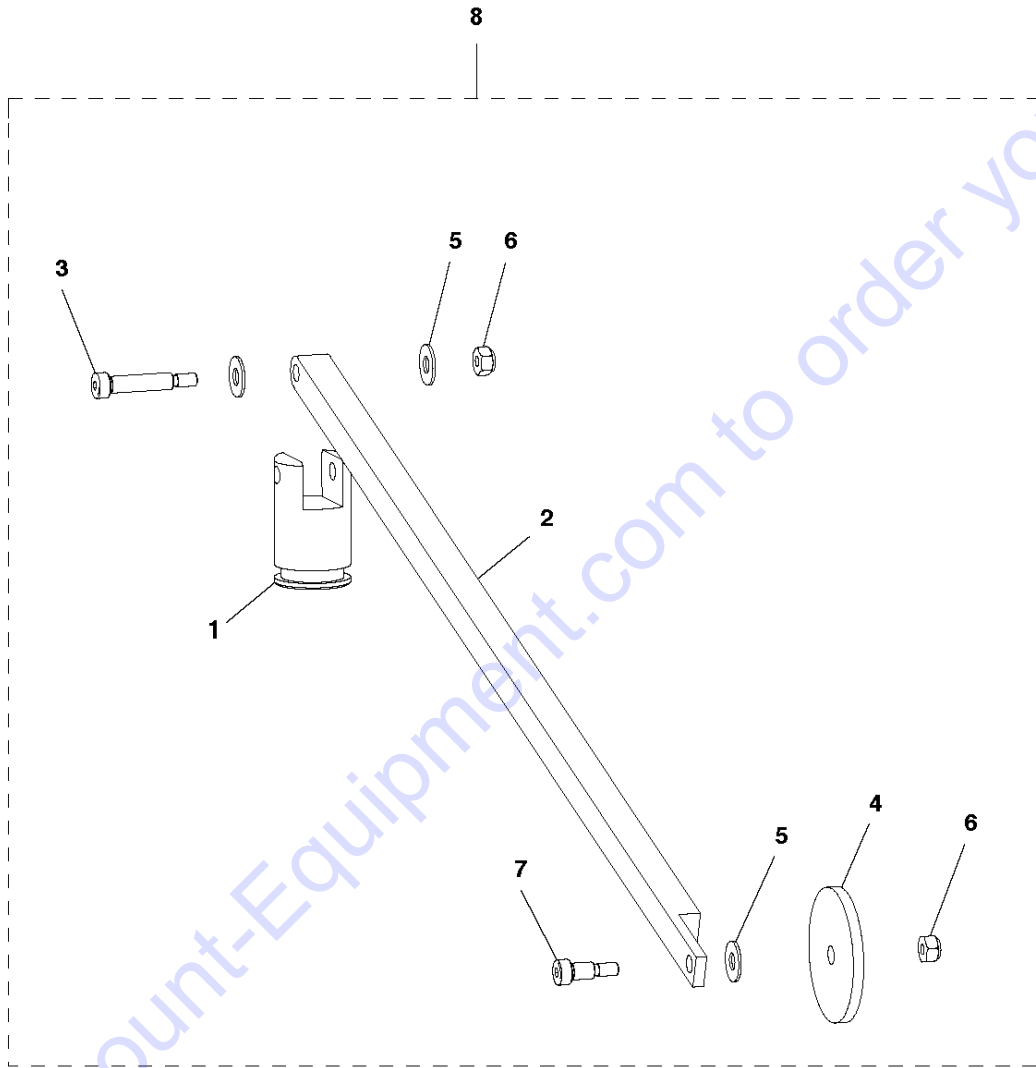
## FRAME

Soff-Cut 150, 2015-02

Ref	Part No	Description	Remark	QTY KIT
1	505 58 65-01	BOTTOM PLATE		1
2	581 26 27-01	GUARD		1
3	505 65 54-01	MOTOR BUSHING		1
4	505 60 13-01	BELT GUARD		1
6	505 58 95-01	PULLEY COVER		1
7	541 20 47-80	FLATWASHER. 5/16 PLTD		4
8	505 63 30-01	LK WASH 5/16 SPLIT SS		3
9	539 99 02-09	SCREW		2
10	505 68 77-01	HEX BOLT 5/16-18 X 2 GRADE 8		4
11	505 62 97-01	BHS 5/16-18-1 1/4 S.S.		1
12	539 99 01-96	NUT		1
13	539 99 07-17	NUT		4
14	505 63 20-01	FLAT WASHER 1/4 X .062 AN960C4		1
15	505 63 28-01	LK WASH 1/4 SPLIT SS		11
16	505 62 73-01	HEX BOLT 1/4-20-3/8 S.S.		2
17	505 62 75-01	HEX BOLT 1/4-20-3/4 S.S.		5
18	505 72 73-01	HEX BOLT 1/4-20-1 STAINLESS ST		3
19	505 62 79-01	SHC 1/4-20-1 S.S.		2
20	505 72 89-01	SHC 1/4-20-2 S.S.		1
21	505 77 45-01	SPRING ANCHORS		1
22	505 63 19-01	JAM NUT 1/4-20 STAINLESS STEEL		2
23	505 63 05-01	NYLOC NUT 1/4-20 CAD PL.		7

Go to Discount-Equipment.com to order your parts

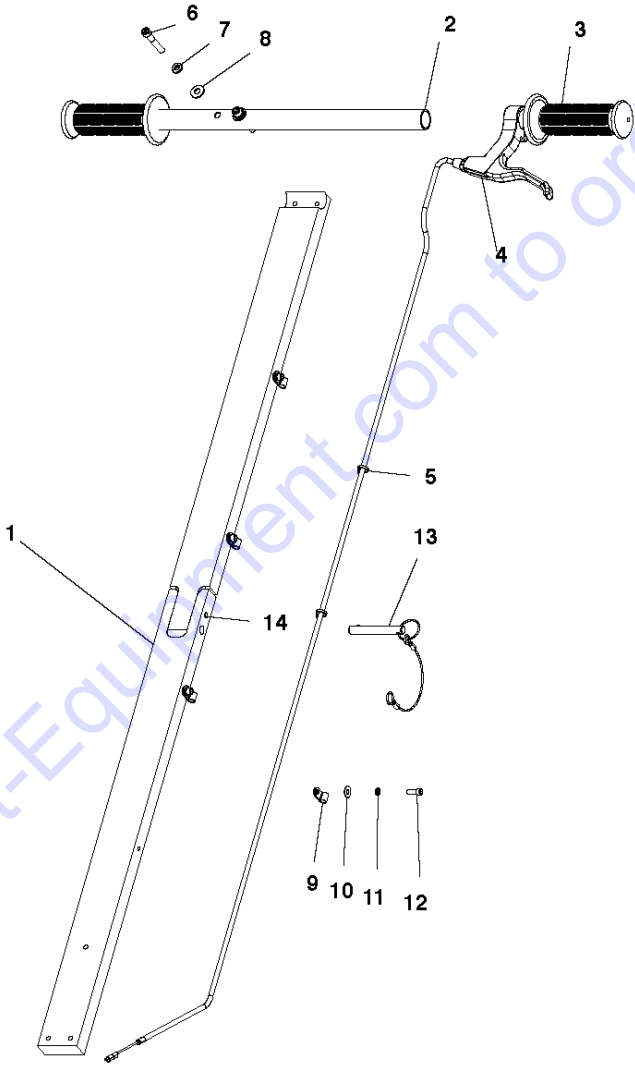
**J** SOFF CUT X150  
GUIDE ARM ASSEMBLY



Ref	Part No	Description	Remark	QTY KIT
1	505 58 87-01	FRONT CAP BLD. BLOCK SHAFT		1
2	505 57 30-01	ARM		1
3	505 72 59-01	SHSB 1/4 X 1 BLK STL		1
4	505 61 42-01	G.M.WHEEL (YEL)		1
5	505 63 44-01	FLAT WASHER .600 X .253 X .040		3
6	505 63 04-01	NYLOC NUT #10-24 CAD.PL.		2
7	505 68 64-01	SHSB 1/4 X 3/8 BLK STL		1
8	506 87 63-01	BRACKET	Complete	

Go to [Discount-Equipment.com](http://Discount-Equipment.com) to order your parts

**F** SOFF CUT X150  
HANDLE ASSEMBLY



Go to Discount-Equipment.com to order your parts

## HANDLE

Soff-Cut 150, 2015-02

Ref	Part No	Description	Remark	QTY KIT
1	505 87 58-01	X150 HANDLES UPPER/LOWER		1
2	505 58 83-01	HANDLE TUBE		1
3	505 60 11-01	HANDLE GRIP		2
4	505 48 27-01	CABLE		1
5	510 33 17-01	TIE WRAP		2
6	505 72 88-01	SHC 1/4-20-1 1/2 S.S.		2
7	505 63 28-01	LK WASH 1/4 SPLIT SS		2
8	505 63 20-01	FLAT WASHER 1/4 X .062 AN960C4		2
9	505 63 97-01	CBL CLAMP/PROXIMITY 1/4		4
10	505 72 53-01	.500 OD X .190 ID X .030 THICK		4
11	505 63 31-01	LK WASH #10 SPLIT SS		4
12	505 72 96-01	SHC 10-32 X 1/2 S.S. CBL MTS		4
13	574 71 98-01	KIT		1
14	505 59 13-01	PREC DOWEL PIN 1/4 X 2		1

Go to [Discount-Equipment.com](http://Discount-Equipment.com) to order your parts

# PARTS FINDER

**Search Website  
by Part Number**



**Search Manual  
Library For Parts  
Manual & Lookup Part  
Numbers – Purchase  
or Request Quote**

**Search Manuals**

Enter your information to help us find the right parts manual for your machine.

\* Brand:

\* Model:

\* Serial:

\* Part Number:

SEARCH

**Can't Find Part or  
Manual? Request Help  
by Manufacturer,  
Model & Description**

**Parts Order Form**

Please fill in the following information to help us find the right part for your machine.

Manufacturer:	<input type="text"/>
Model:	<input type="text"/>
Description:	<input type="text"/>
Part Number:	<input type="text"/>
Quantity:	<input type="text"/>
Notes:	<input type="text"/>

Submit

Discount-Equipment.com is your online resource for quality parts & equipment.

Florida: **561-964-4949** Outside Florida TOLL FREE: **877-690-3101**

**Need parts?**

Click on this link: <http://www.discount-equipment.com/category/5443-parts/> and choose one of the options to help get the right parts and equipment you are looking for. Please have the machine model and serial number available in order to help us get you the correct parts. If you don't find the part on the website or on one of the online manuals, please fill out the request form and one of our experienced staff members will get back to you with a quote for the right part that your machine needs.

We sell worldwide for the brands: Genie, Terex, JLG, MultiQuip, Mikasa, Essick, Whiteman, Mayco, Toro Stone, Diamond Products, Generac Magnum, Airman, Haulotte, Barreto, Power Blanket, Nifty Lift, Atlas Copco, Chicago Pneumatic, Allmand, Miller Curber, Skyjack, Lull, Skytrak, Tsurumi, Husquvarna Target, Stow, Wacker, Sakai, Mi-T-M, Sullair, Basic, Dynapac, MBW, Weber, Bartell, Bennar Newman, Haulotte, Ditch Runner, Menegotti, Morrison, Contec, Buddy, Crown, Edco, Wyco, Bomag, Laymor, EZ Trench, Bil-Jax, F.S. Curtis, Gehl Pavers, Heli, Honda, ICS/PowerGrit, IHI, Partner, Imer, Clipper, MMD, Koshin, Rice, CH&E, General Equipment, Amida, Coleman, NAC, Gradall, Square Shooter, Kent, Stanley, Tamco, Toku, Hatz, Kohler, Robin, Wisconsin, Northrock, Oztec, Toker TK, Rol-Air, APT, Wylie, Ingersoll Rand / Doosan, Innovatech, Con X, Ammann, Mecalac, Makinex, Smith Surface Prep, Small Line, Wanco, Yanmar