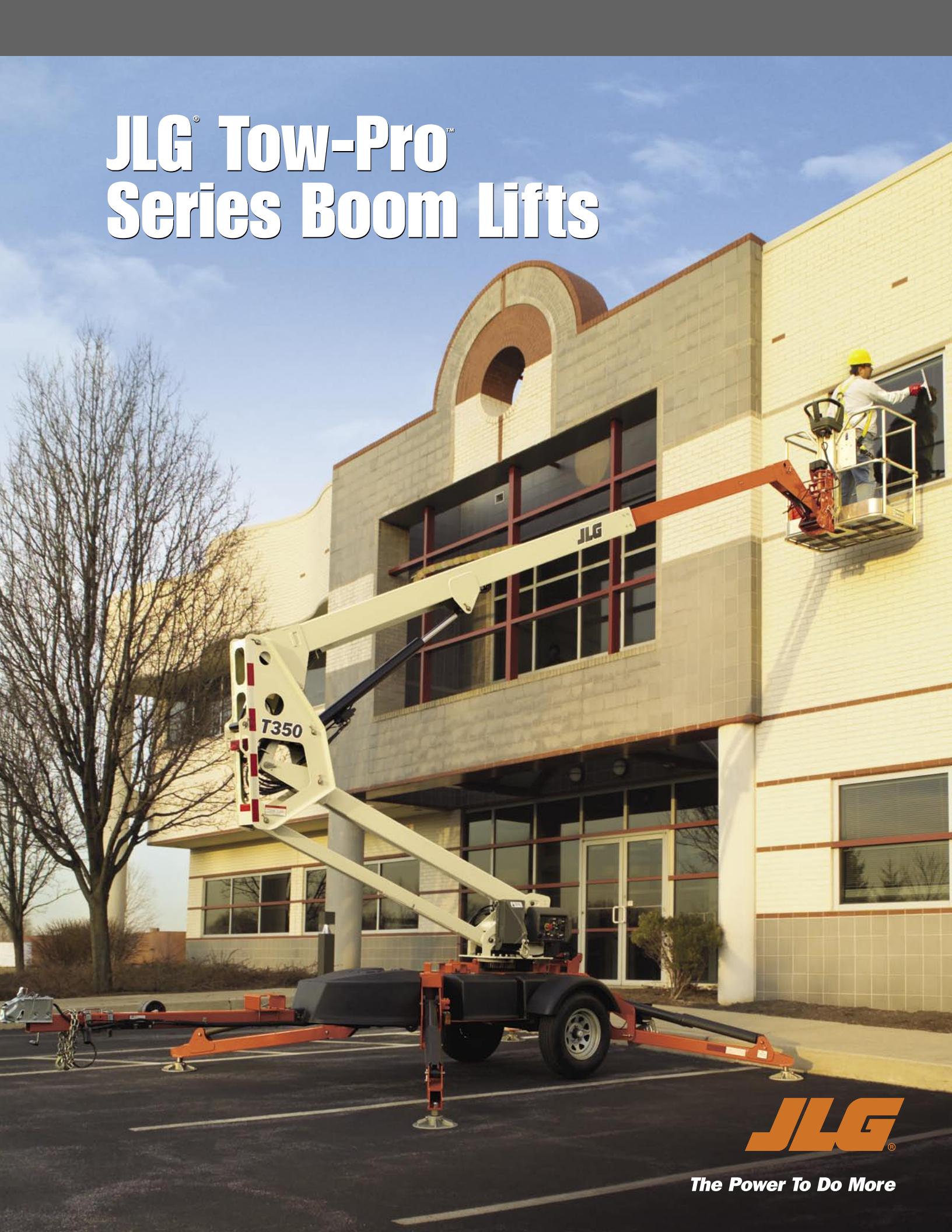


# JLG® Tow-Pro™ Series Boom Lifts



**JLG**®

**The Power To Do More**



# More of What You Need...

Only the world leader in aerial access equipment can offer you this much quality and performance at such an incredible value. With the rugged construction, advanced features and a proven boom design, you can be sure that the Tow-Pro™ Series boom lifts from JLG® will deliver the power to do more.

## MORE control

With a compact size, efficient proportional controls, automatic self-leveling, and exclusive accessories, the Tow-Pro Series was designed to handle an amazing variety of tasks and put more power under your control.

## MORE rigidity

Nothing boosts the confidence of workers on the job like the strength and reliability of a JLG boom. Our proven telescopic boom design provides a more rigid platform feel and has the strength to handle a variety of productivity enhancing accessories.

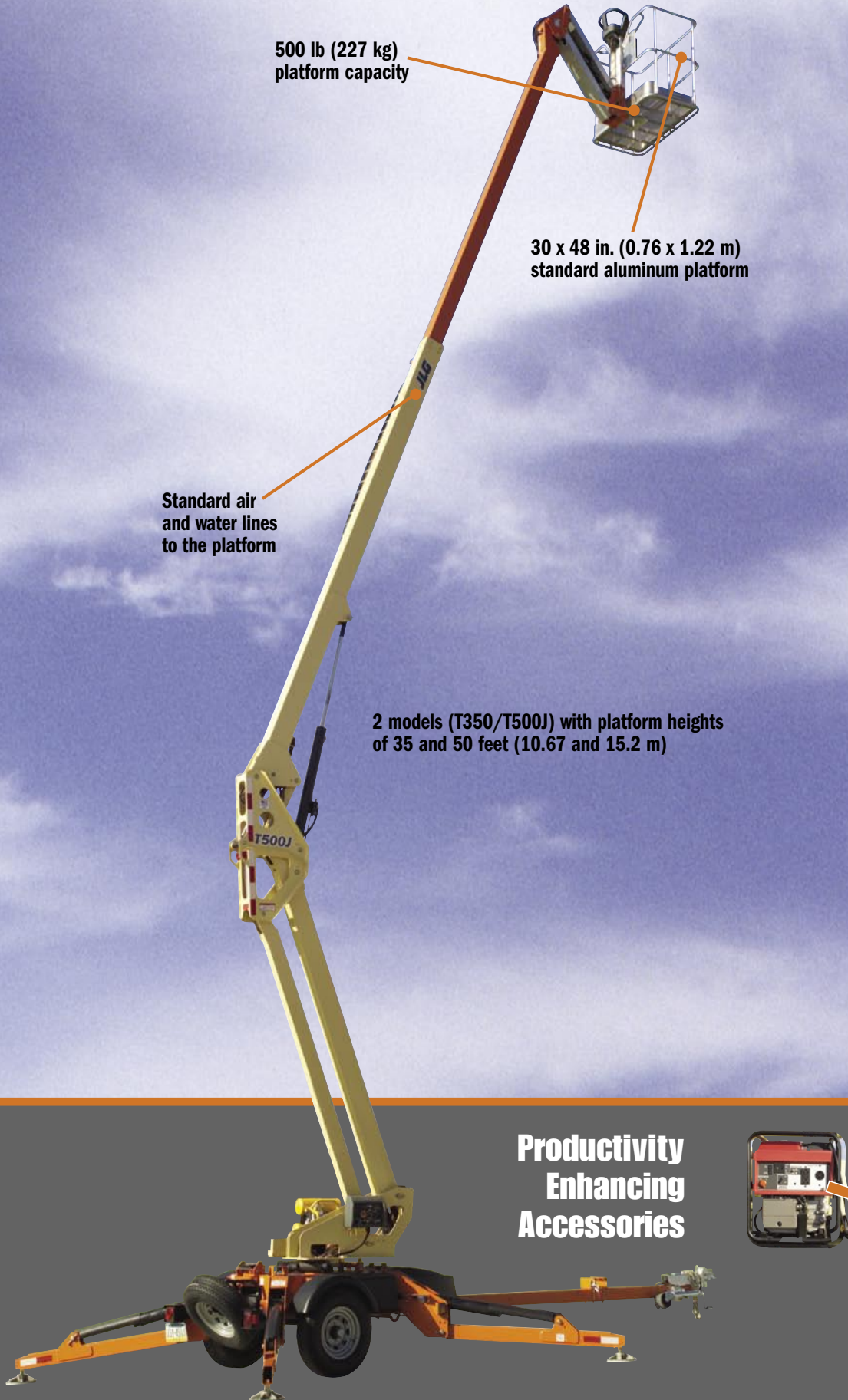
## MORE speed

Easy to transport and easier to set up, the Tow-Pro Series helps make quick work of any job. With a standard combination hitch, industry leading 65 mph (105 kmph) rated towing speed, and hydraulic auto-leveling outriggers, the Tow-Pro can be on the job, set up, and working in no time at all.





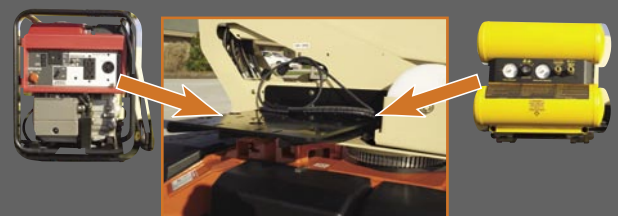
# Tackle the Tough Jobs.



## Ideal for :

- residential construction
- gutter cleaning
- tree trimming
- pressure washing
- decorating
- lighting
- painting
- remodeling
- schools/universities
- museums
- parking decks
- sign companies
- roofers
- landscapers
- shopping malls
- park services
- golf courses
- and more

## Productivity Enhancing Accessories



- Standard accessory mounting tray for optional generator, air compressor or pressure washer

# Just Hitch and Go!



Easy to transport with a standard combination hitch and adjustable height coupler



Easier to set up with hydraulic auto-leveling outriggers



Boom orientation helps protect basket during towing (basket stows over the hitch side)

## Special Features

- 35 ft (10.67 m) and 50 ft (15.24 m) models
- Hydraulic auto-leveling outriggers for faster and easier set up
- Industry leading 65 mph (105 kmph) rated towing speed
- 24V DC electric or gas powered engine
- Platform controls with one-hand operation of boom functions
- Accessory mounting tray accommodates customer-provided generator, air compressor or pressure washer
- Standard air and water lines to the platform



- Optional drive and outrigger set from the platform



- Optional bolt-on material handling hook



- Optional non-marking outrigger pads



# Work More Places.

**Tree Trimming**



**Power Washing**



**Repairs**



**Lighting**



**Residential Construction**



**Decorating**



## Innovative controls



Detachable platform controls provide faster and more efficient boom positioning with one-hand operation of all boom functions. Ground control buttons and switches feature high contrast graphics. Graphical symbols make the controls easier to identify and help reduce operator training time.



Articulating jib (Model T500J) provides easier access to hard-to-reach areas

# Standard Features

- Telescopic Upper Boom
- 4 ft (1.22 m) Jib (T500J Only)
- Side Entry Platform
- 30 x 48 in. (0.76 x 1.22 m)
- Proportional Controls
- 110V-AC Receptacle in the Platform
- Auto-Leveling Hydraulic Outriggers
- Motion Alarm
- Tilt Alarm/Indicator Light
- Hourmeter
- Four 6V 220 Amp-Hour Batteries
- Battery Condition Indicator
- Parking Brake
- Combination Hitch with Adjustable Height Coupler

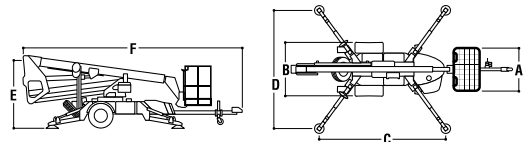
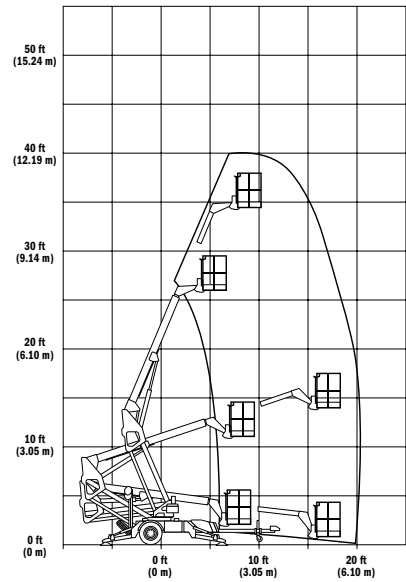
# Available Options

- Platform Rotator
- Material Hook – 500 lb (227 kg) capacity
- Drive and Outrigger Set
- Platform Mounted Glass/Panel Tray
- Non-Marking Outrigger Pads
- Full-Size Spare Tire
- Flashing Amber Beacon

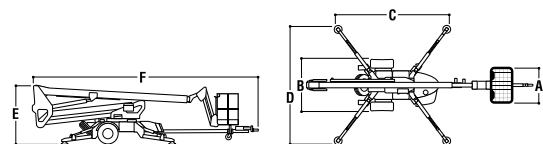
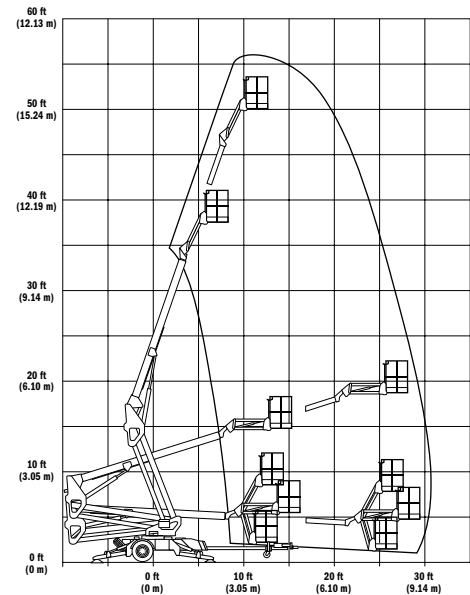
## Specifications

|                                      | T350                        | T500J                       |
|--------------------------------------|-----------------------------|-----------------------------|
| <b>Platform Height</b>               | 35 ft (10.67 m)             | 50 ft (15.24 m)             |
| <b>Horizontal Outreach</b>           |                             |                             |
| Working Outreach                     | 20 ft 2 in. (6.15 m)        | 31 ft 6 in. (9.6 m)         |
| Centerline to Platform Edge          | 18 ft 8 in. (5.69 m)        | 30 ft (9.14 m)              |
| From Outrigger Pad Edge              | 13 ft 6 in. (4.11 m)        | 23 ft 5 in. (7.14 m)        |
| <b>Up and Over Height</b>            | 15 ft (4.57 m)              | 18 ft (5.49 m)              |
| <b>Swing</b>                         | 410° Non-Continuous         | 410° Non-Continuous         |
| <b>Platform Capacity</b>             | 500 lb (227 kg)             | 500 lb (227 kg)             |
| <b>Platform Capacity w/Rotator</b>   | 440 lb (200 kg)             | 440 lb (200 kg)             |
| <b>Material Hook Capacity</b>        | 500 lb (227 kg)             | 500 lb (227 kg)             |
| <b>Platform Rotator (Optional)</b>   | 90° Manual                  | 90° Manual                  |
| <b>Jib Length</b>                    | N/A                         | 4 ft (1.22 m)               |
| <b>Jib Vertical Motion</b>           | N/A                         | 130 degrees (+75, -55)      |
| <b>A. Platform Size</b>              | 30 x 48 in. (0.76 x 1.22 m) | 30 x 48 in. (0.76 x 1.22 m) |
| <b>B. Overall Width</b>              | 4 ft 9 in. (1.44 m)         | 5 ft 7 in. (1.7 m)          |
| <b>C. Outrigger Footprint—Length</b> | 11 ft 6 in. (3.51 m)        | 13 ft (3.96 m)              |
| <b>D. Outrigger Footprint—Width</b>  | 10 ft 5 in. (3.18 m)        | 13 ft (3.96 m)              |
| <b>E. Stowed Height</b>              | 6 ft 6 in. (1.98 m)         | 6 ft 6 in. (1.98 m)         |
| <b>F. Stowed Length</b>              | 21 ft 4 in. (6.5 m)         | 26 ft 10 in. (8.18 m)       |
| <b>Entry Height—extended</b>         | 10 in. (25.4 cm)            | 15 in. (38 cm)              |
| <b>Leveling Capability</b>           | 11°                         | 11°                         |
| <b>Gross Vehicle Weight</b>          | 3,400 lb (1,542 kg)         | 4,800 lb (2,177 kg)         |
| <b>Towing Speed Rating</b>           | 65 mph (105 kmph)           | 65 mph (105 kmph)           |
| <b>Tongue Weight</b>                 | 242 lb (110 kg)             | 350 lb (159 kg)             |
| <b>Brakes</b>                        | Hydraulic Surge             | Hydraulic Surge             |
| <b>Parking Brakes</b>                | Std.                        | Std.                        |
| <b>Tire Size/Type</b>                | 205/75 R14 Pneumatic        | 225/75 R15 Pneumatic        |
| <b>DC Power</b>                      | 24V DC                      | 24V DC                      |
| <b>Batteries</b>                     | 4 x 6V 220 amp-hr           | 4 x 6V 220 amp-hr           |
| <b>Gasoline Engine (Optional)</b>    | Honda GX 270—9 hp           | Honda GX 270—9 hp           |

## T350 SERIES



## T500J SERIES



JLG Industries, Inc. provides coverage on all products for one (1) full year, and covers all specified major structural components for five (5) full years. Due to continuous product improvements, we reserve the right to make specification and/or equipment changes without prior notification. This machine meets or exceeds applicable OSHA Regulations in 29 CFR 1910.67, 29 CFR 1926.453 and ANSI A92.2-2001 as originally manufactured for intended applications.