

STEP-UP 120 SINGLE PHASE

PROGRESSIVE CAVITY PUMP: SCREW PUMP FOR PUMPING AND SPRAYING APPLICATIONS

TOGETHER WE BUILD



STEP-UP 120 | Model # 1106180 | 220V/60Hz, 3 HP, Single-Phase

THE STEP-UP 120 SERIES OF SPRAY AND GROUT PUMPS

When you need more power to push through stiffer material or need more volume, then look no further than the Step-Up 120 series of pumps. The Step-Up 120 is a towable but very compact pump suited for unique pumping situations and environments. These pumps are extremely versatile. Pump or spray mortars, stuccos, grouts, restoration mortars, underlayments, fireproofing, waterproofings, along with many other materials. Shown with the Step-Up 120 pan mixer for continuous mixing and pumping.



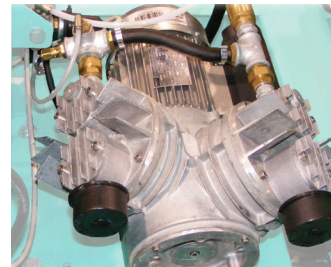
DUST GRATE FOR ADDED SAFETY

Take control of dust. Easily attach IMER's iDUST® dust grate and attach a vacuum, watch the dust pull downward, away from operators.



COMPRESSOR

The dual-diaphragm "V" stroke compressor provides ample air for spray applications - Continuous duty rated and maintenance-free.



Technical specifications

| | STEP-UP 120 1P |
|---------------------------------|-----------------------|
| Motor power rate | 3 hp |
| Mixer power rate | 2 hp |
| Electric compressor | 1 hp / 9 cfm |
| Max aggregate size | 1/4 in |
| Maximum flow rate | 1.5 cu yd |
| Horizontal pumping distance (*) | 200 ft |
| Vertical pumping distance (*) | 100 ft |
| Hopper capacity | 4.25 cu ft |
| Dimensions | 33 W x 80 L x 38 H in |
| Weight | 616 lbs |

(*) The pumping distance will vary depending upon the type of material being used.

STEP-UP 120 SINGLE PHASE



PROGRESSIVE CAVITY PUMP: SCREW PUMP FOR PUMPING AND SPRAYING APPLICATIONS

TOGETHER WE BUILD

STEP-UP 120 APPLICATIONS

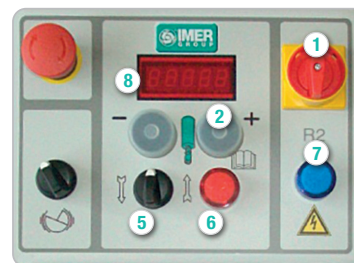
| Product / Part # | A | B | C |
|---|--|-----------------------|--|
|  STANDARD ROTOR / STATOR IM25L Rotor Part # 1107111 IM25L Stator Part # 1107110 | Pumping of grouts, self-leveling underlayers | Spraying fireproofing | Spraying mortar, stucco base coat (1/8" or more of build-up) |
|  Dual-diaphragm compressor Part # 1107602 | | ✓ | ✓ |
|  53' x 13 mm Air hose w/Geka - 1107532 33' x 25 mm Air hose w/Geka - 1107531 | | ✓ | ✓ |
|  Non-towing wheel kit Part # 1107633 | ✓ | ✓ | ✓ |
|  Step-Up 120 pan mixer, Single Phase Part # 1107596 | ✓ | ✓ | ✓ |
|  120' Remote control Part # 1107574 | ✓ | ✓ | ✓ |
|  Remote control extension cable Part # 1107544 | ✓ | ✓ | ✓ |
|  Spin 30 continuous mixer with iDust grate - Part # 1106152 | ✓ | ✓ | ✓ |
|  33' x 35 mm Material hose Part # 1107528 | ✓ | ✓ | ✓ |
|  50 mm to 35 mm material hose reducer Part # 1106178 | ✓ | ✓ | ✓ |
|  Vibrating grate Part # 1107592 | ✓ | | ✓ |
|  2L6 Rotor/stator kit Part # 1107088 | ✓ | ✓ | ✓ |
|  Spray gun Step-Up 120 Part # 1107577 | | ✓ | ✓ |
|  Pintle tow ring Part # 1107161 | ✓ | ✓ | ✓ |
|  5' Overhead wand - Part #1107549 (requires reducer hose - part # 1107074) | | ✓ | ✓ |
|  16' x 35 mm male to 25 mm male hose Part #1107074 | | ✓ | ✓ |

✓ Required ✓ Optional

STANDARD EQUIPMENT SINGLE-PHASE

- 3 HP Single-Phase 100% duty-cycle motor
- IM25L Rotor/stator
- Inverter Control panel
- 66' power cord
- Remote control ready
- Tow kit
- Grate for premixed materials
- Accessory toolbox

CONTROL PANEL SINGLE-PHASE



- 1 On/Off switch
- 2 Rotor/stator speed control
- 3 Emergency stop button
- 4 Vibrating grate switch
- 5 Rotor/stator forward/reverse
- 6 Safety default light
- 7 Current supply light
- 8 Diagnostic display