



PARTS LIST MANUAL

FLOOR TILE STRIPPER



MODEL TS-14

PART # 94700



A Division of Equipment Development Company, Inc.

PARTS FINDER

**Search Website
by Part Number**



**Search Manual
Library For Parts
Manual & Lookup Part
Numbers – Purchase
or Request Quote**

Search Manuals

Enter your information to help us find the right parts manual for your machine.

* Brand:

* Model:

* Serial:

* Part Number:

SEARCH

**Can't Find Part or
Manual? Request Help
by Manufacturer,
Model & Description**

Parts Order Form

Please fill in the following information to help us find the right part for your machine.

Manufacturer:	<input type="text"/>
Model:	<input type="text"/>
Description:	<input type="text"/>
Part Number:	<input type="text"/>
Quantity:	<input type="text"/>
Notes:	<input type="text"/>

Submit

Discount-Equipment.com is your online resource for quality parts & equipment.

Florida: **561-964-4949** Outside Florida TOLL FREE: **877-690-3101**

Need parts?

Click on this link: <http://www.discount-equipment.com/category/5443-parts/> and choose one of the options to help get the right parts and equipment you are looking for. Please have the machine model and serial number available in order to help us get you the correct parts. If you don't find the part on the website or on one of the online manuals, please fill out the request form and one of our experienced staff members will get back to you with a quote for the right part that your machine needs.

We sell worldwide for the brands: Genie, Terex, JLG, MultiQuip, Mikasa, Essick, Whiteman, Mayco, Toro Stone, Diamond Products, Generac Magnum, Airman, Haulotte, Barreto, Power Blanket, Nifty Lift, Atlas Copco, Chicago Pneumatic, Allmand, Miller Curber, Skyjack, Lull, Skytrak, Tsurumi, Husquvarna Target, Stow, Wacker, Sakai, Mi-T-M, Sullair, Basic, Dynapac, MBW, Weber, Bartell, Bennar Newman, Haulotte, Ditch Runner, Menegotti, Morrison, Contec, Buddy, Crown, Edco, Wyco, Bomag, Laymor, EZ Trench, Bil-Jax, F.S. Curtis, Gehl Pavers, Heli, Honda, ICS/PowerGrit, IHI, Partner, Imer, Clipper, MMD, Koshin, Rice, CH&E, General Equipment, Amida, Coleman, NAC, Gradall, Square Shooter, Kent, Stanley, Tamco, Toku, Hatz, Kohler, Robin, Wisconsin, Northrock, Oztec, Toker TK, Rol-Air, APT, Wylie, Ingersoll Rand / Doosan, Innovatech, Con X, Ammann, Mecalac, Makinex, Smith Surface Prep, Small Line, Wanco, Yanmar

READ AND UNDERSTAND THE OPERATORS INSTRUCTION MANUAL *THOROUGHLY* BEFORE ATTEMPTING TO OPERATE THIS EQUIPMENT.



Death or serious injury could occur if this machine is used improperly.



SAFETY MESSAGES

- Safety Instructions are preceded by a graphic alert symbol of DANGER, WARNING, or CAUTION.



Indicates an imminent hazard which, if not avoided, will result in death or serious injury.



Indicates an imminent hazard which, if not avoided, can result in death or serious injury.



Indicates hazards which, if not avoided, could result in serious injury and or damage to the equipment.

GASOLINE/PROPANE POWERED EQUIPMENT



- Engine exhaust from this product contains chemicals known to the State of California to cause cancer, birth defects or other reproductive harm.



- Gasoline is extremely flammable and poisonous. It should only be dispensed in well ventilated areas, and with a cool engine.

- Small gasoline engines produce high concentrations of carbon monoxide (CO) example: a 5 HP 4 cycle engine operation in an enclosed 100,000 cu. ft. area with only one change of air per hour is capable of providing deadly concentrations of CO in less than fifteen minutes. Five changes of air in the same area will produce noxious fumes in less than 30 minutes. Gasoline or propane powered equipment should not be used in enclosed or partially enclosed areas. Symptoms of CO poisoning include, headache, nausea, weakness, dizziness, visual problems and loss of consciousness. If symptoms occur - get into fresh air and seek medical attention immediately.

ELECTRICAL POWERED EQUIPMENT



Extreme care must be taken when operating electric models with water present: Ensure power cord is properly grounded, is attached to a Ground-Fault-Interrupter (GFI) outlet, and is undamaged.

- Check all electrical cables - be sure connections are tight and cable is continuous and in good condition. Be sure cable is correctly rated for both the operating current and voltage of this equipment.
- Improper connection of the equipment-grounding conductor can result in a risk of electric shock. Check with qualified electrician or service person if there is any doubt as to whether the outlet is properly grounded. Adhere to all local codes and ordinances.
- **NOTE:** In the event of a malfunction or breakdown, grounding provides a path of least resistance for the electric current to dissipate. The motor is equipped with a grounded plug and must be connected to an outlet that is properly installed and properly grounded. DO NOT modify the plug provided on the motor. If the plug does not fit the outlet have a qualified electrician install the proper receptacle.
- Switch motor OFF **before** disconnecting power.

- Do not disconnect power by pulling cord. To disconnect, grasp the plug, not the cord.
- Unplug power cord at the machine when not in use and before servicing.

GENERAL INSTRUCTIONS

- Equipment should only be operated by trained personnel in good physical condition and mental health (not fatigued). The operator and maintenance personnel must be physically able to handle the bulk weight and power of this equipment.
- This is a one person tool. Maintain a safe operating distance to other personnel. It is the **operators' responsibility** to keep other people (workers, pedestrians, bystanders, etc.) away during operation. Block off the work area in all directions with roping, safety netting, etc. for a safe distance. Failure to do so may result in others being injured by flying debris or exposing them to harmful dust and noise.
- This equipment is intended for commercial use only.
- For the operator's safety and the safety of others, always keep all guards in place during operation.
- Never let equipment run unattended.



- Personal Protection Equipment and proper safety attire must be worn when operating this machinery. The operator must wear approved safety equipment appropriate for the job such as hard hat and safety shoes when conditions require. Hearing protection **MUST** be used (operational noise levels of this equipment may exceed 85db). Eye protection **MUST** be worn at all times.



Keep body parts and loose clothing away from moving parts. Failure to do so could result in dismemberment or death.

- Do not modify the machine.
- Stop motor/engine when adjusting or servicing this equipment.



Maintain a safe operating distance from flammable materials. Sparks from the cutting-action of this machine can ignite flammable materials or vapors.

DUST WARNING



Some dust created by power sanding, sawing, grinding, drilling, and other construction activities contains chemicals known to cause cancer, birth defects, or other reproductive harm. Some examples of these chemicals are:

- Lead from lead-based paints, and
 - Crystalline silica from bricks and concrete and other masonry products.
- Your risk of exposure to these chemicals varies depending on how often you do this type of work. To reduce your risk: work in a well ventilated area, use a dust control system, such as an industrial-style vacuum, and wear approved personal safety equipment, such as a dust/particle respirator designed to filter out microscopic particles.

PARTS LIST MANUAL

FLOOR TILE STRIPPER

MODEL TS14

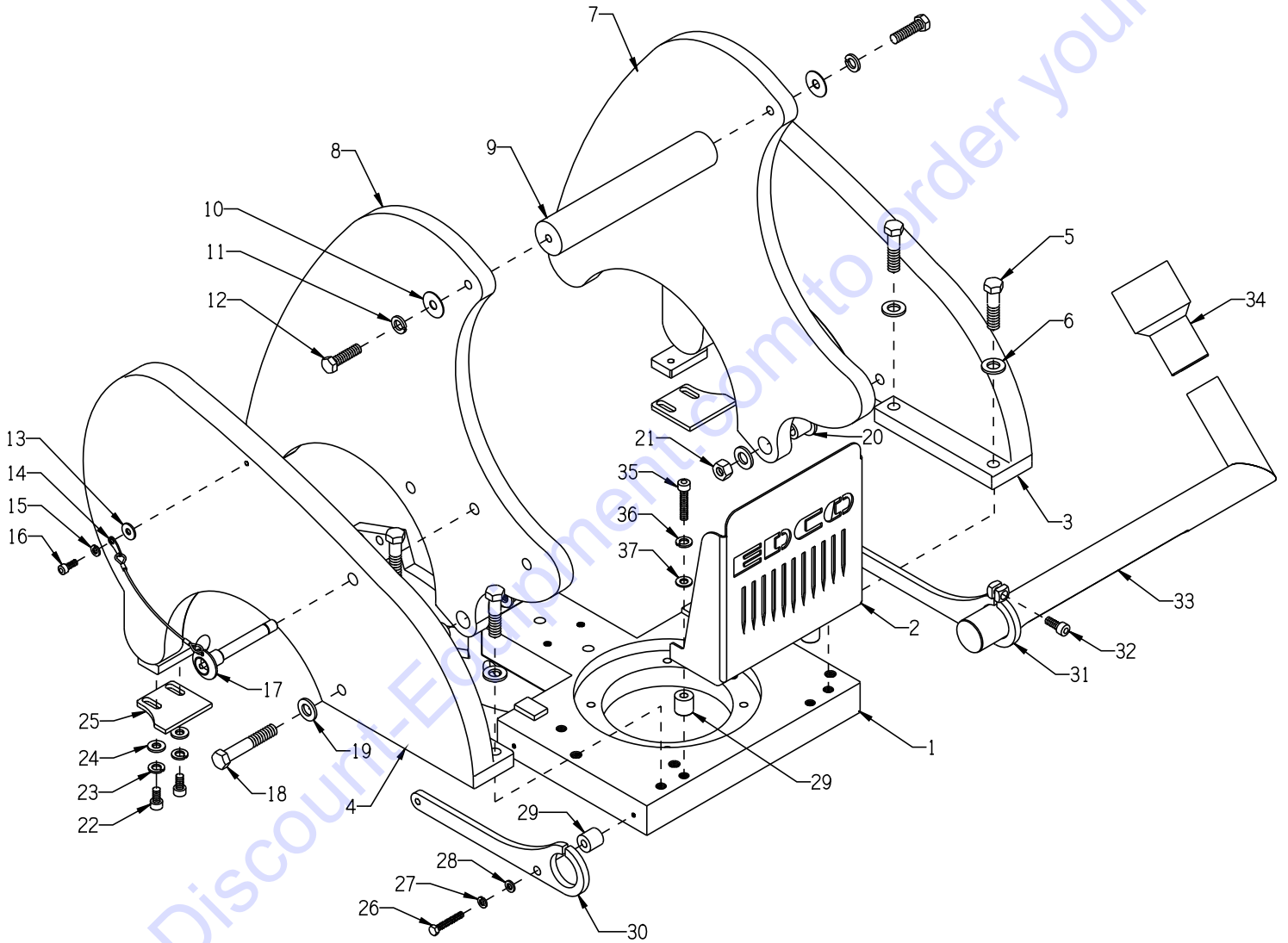
TABLE OF CONTENTS

<u>Section</u>	<u>Page Number</u>
Safety Messages and General Instructions	2
How To Order Replacement Parts	3
Illustration 1: Main Grouping	4, 5
Illustration 2: Blade Holder, Eccentric & Connector Grouping	6, 7
Illustration 3: Wheel & Axle Grouping	8, 9
Illustration 4: Drive Motor Mount & Adjustment Lever Grouping	10, 11
Illustration 5: Handle Assembly	12, 13
Illustration 6: Switchbox Assembly	14, 15
Illustration 7: Motor Grouping	16, 17
Illustration 8: Wiring Diagram	18
Notes	19
Limited Equipment Warranty of Sale - Terms & Conditions	20 (Back Page)



A Division of Equipment Development Company, Inc.

ILLUSTRATION 1: MAIN GROUPING



PARTS LISTING - ILLUSTRATION 1 : MAIN GROUPING			
ITEM #	PART #	DESCRIPTION	QTY.
1	CNA-27-10-01-00	MAIN PLATE	1
2	CNA-27-10-15-00-EC	FENDER, MOTOR	1
3	CNA-27-10-04-01-L	WEIGHT OUTSIDE LEFT	1
4	CNA-27-10-04-01-R	WEIGHT OUTSIDE RIGHT	1
5	11778	SCREW, CAP M12-1.75 X 50MM	4
6	11755	WASHER, FLAT M12 ZINC	4
7	CNA-27-10-02-01-L	WEIGHT INSIDE LEFT	1
8	CNA-27-10-02-01-R	WEIGHT INSIDE RIGHT	1
9	CNA-27-10-05-00	WEIGHT CONNECTOR	1
10	11766	WASHER, LG. DIA. M10 X 30MM ZINC	2
11	11631	WASHER, LOCK M10 ZINC	2
12	11775	SCREW, CAP M10-1.5 X 40MM	2
13	11752	WASHER, FLAT M6 ZINC	1
14	CNA-GN-111-20-14-B	RETAINING CABLE, LOCK PIN	1
15	11636	WASHER, LOCK M6 ZINC	1
16	11783	SCREW, SKT. HD. M6-1.0 X 16MM	1
17	CNA-GN-114-10-70	LOCK PIN FOR WEIGHT ADJUSTMENT	1
18	11779	SCREW, CAP M12-1.75 X 75MM	2
19	11755	WASHER, FLAT M12 ZINC	4
20	CNA-27-10-16-08	AXIS INNER, WEIGHT	2
21	11793	NUT, HEX NYLON LOCK M12-1.75	2
22	11784	SCREW, SKT. HD. M8-1.25 X 16MM	4
23	11757	WASHER, LOCK M8 ZINC	4
24	11753	WASHER, FLAT M8 ZINC	4
25	CNA-27-10-17-00	SCRAPER, WHEEL	2
26	11770	SCREW, CAP M6-1.0 X 40MM	4
27	11636	WASHER, LOCK M6 ZINC	4
28	11752	WASHER, FLAT M6 ZINC	4
29	28504	SPACER, STEEL 8.5MM X 20MM X 20MM	6
30	28502	BRACKET, RIGHT, VACUUM PORT, TS-14	2
31	28503	BRACKET, LEFT, VACUUM PORT, TS-14	1
32	10878	SCREW, SKT. HD. CAP 3/8-24 X 1 ZINC	1
33	28501	VACUUM PORT, TS-14	1
34	ED5014D	HOSE CUFF, 2.0"HOSE X 1.5"CONN.	1
35	11786	SCREW, SKT. HD. M8-1.25 X 35MM	2
36	11757	WASHER, LOCK M8 ZINC	2
37	11753	WASHER, FLAT M8 ZINC	2



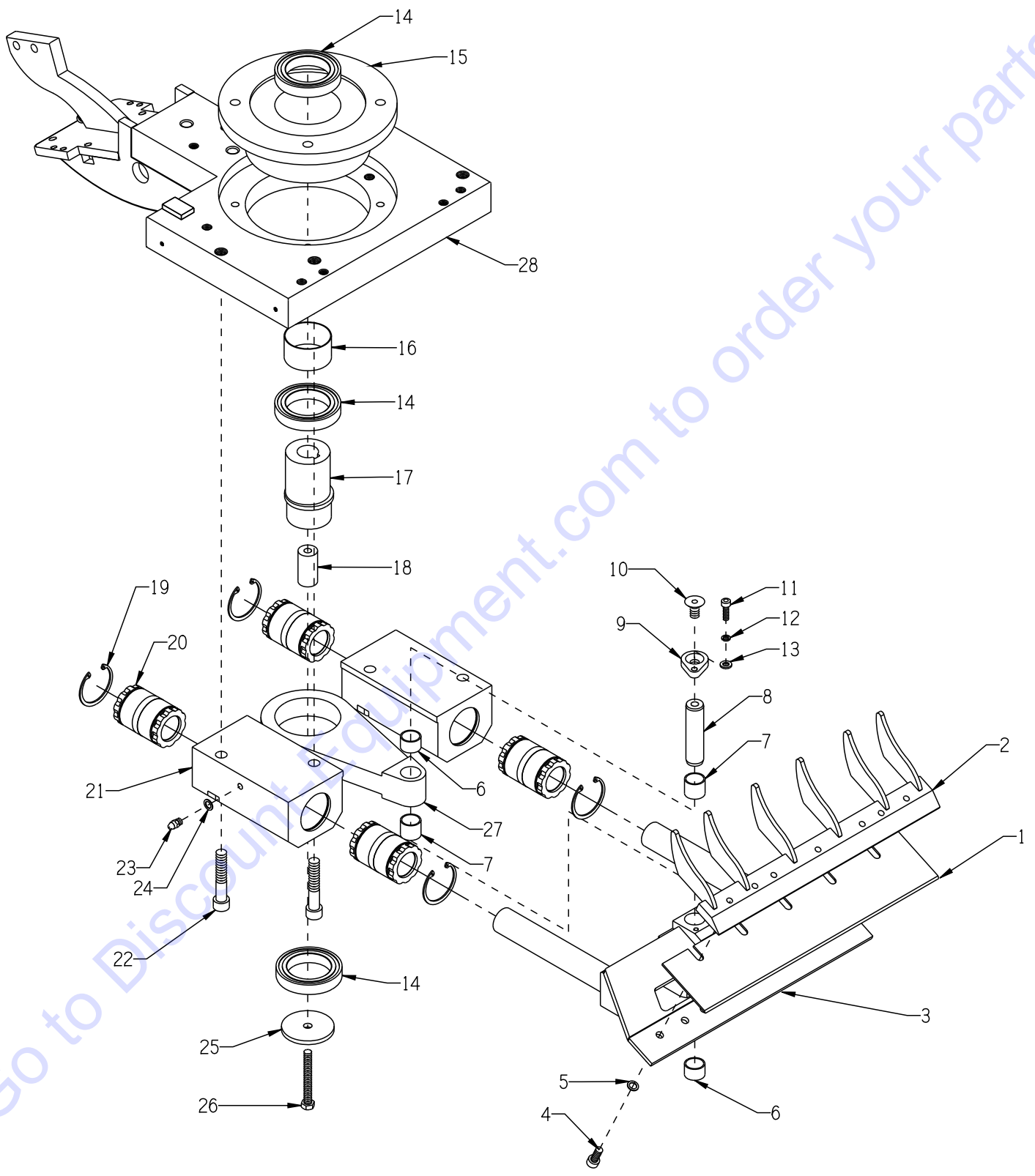
A Division of Equipment Development Company, Inc.

Printed in USA

JWA ©2014

Page 5

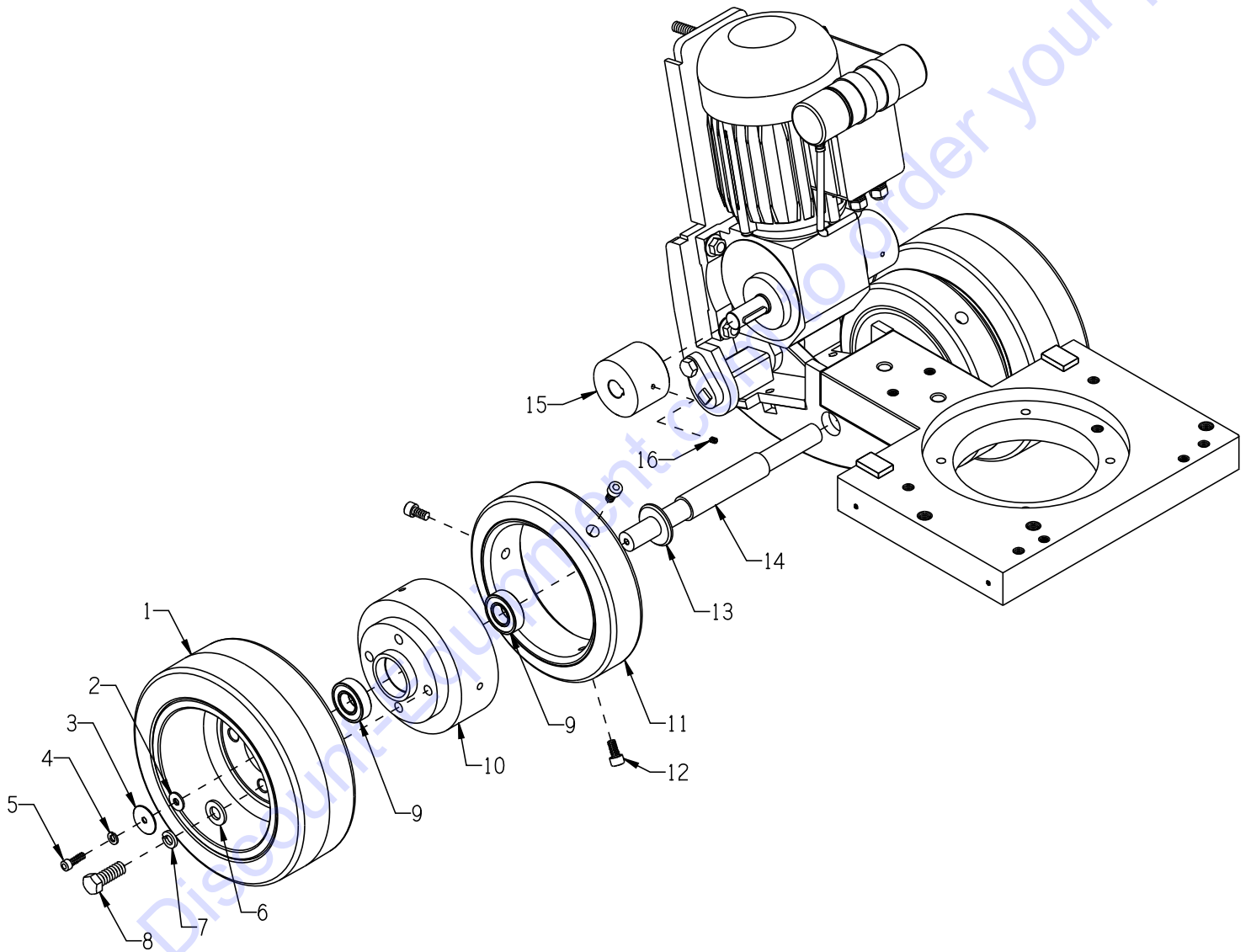
ILLUSTRATION 2: BLADE HOLDER, ECCENTRIC & CONNECTING ROD GROUPING



PARTS LISTING - ILLUSTRATION 2: BLADE HOLDER, ECCENTRIC & CONNECTING ROD GROUPING			
ITEM #	PART #	DESCRIPTION	QTY.
1	28520 28530 28540	BLADE - PACK OF 5 SCRAPER BLADE 14.5 X 3 X 0.063 (INCLUDED) SCRAPER BLADE 7.5 X 3 X 0.063 (OPTIONAL) SLICER BLADE 14.5 X 4 X 0.063 (OPTIONAL)	1PK.
2	CNA-27-10-17-03	BRACKET FOR BLADE 350mm	1
3	CNA-27-10-12-00	BLADE HOLDER	1
4	11785	SCREW, SKT. HD. M8-1.25 X 20MM	5
5	11762	WASHER, SERRATED 5/16 (M8)	5
6	CNA-84-83-23-10	SLIDE BUSHING 10mm	2
7	CNA-84-83-23-15	SLIDE BUSHING 15mm	2
8	CNA-27-10-16-09	ROD AXIS	1
9	CNA-27-10-11-11	ROD PIN BRACKET	1
10	11790	SCREW, SKT. FLAT HD. M10-1.5 X 16MM	1
11	11785	SCREW, SKT. HD. M8-1.25 X 20MM	1
12	11636	WASHER, LOCK M6 ZINC	1
13	11752	WASHER, FLAT, M6 ZINC	1
14	CNA-61-60-10-2Z-C3	MAIN/ROD BEARING	3
15	CNA-27-10-16-01	MAIN BEARING HOUSING	1
16	CNA-27-11-22-58	SPACER BEARING HOUSING	1
17	CNA-27-10-16-02-US	ECCENTRIC DRIVE SHAFT	1
18	CNA-27-10-16-03	DRIVE SHAFT SPACER	1
19	36112	RETAINING RING, INT. 47MM	4
20	CNA-LBCD30A-2LS	LINEAR BEARING 30MM X 47MM X 68MM	4
21	CNA-61-20-01-30	LINEAR BEARING HOUSING	2
22	11788	SCREW, SKT. HD. M12-1.75 X 65MM	4
23	CNA-61-21-01-30	FITTING, GREASE M8	2
24	11762	WASHER, SERRATED 5/16 (M8)	2
25	CNA-27-10-17-04	ROD BEARING WASHER 8MM X 60MM X 5MM	1
26	11772	SCREW, CAP M8-1.25 X 70MM FULL THREAD	1
27	CNA-27-10-16-04	CONNECTING ROD	1
28	CNA-27-10-01-00	MAIN PLATE	1



ILLUSTRATION 3: WHEEL & AXLE GROUPING



PARTS LISTING - ILLUSTRATION 3: WHEEL & AXLE GROUPING			
ITEM #	PART #	DESCRIPTION	QTY.
1	CNA-80-20-20-51	DRIVE WHEEL	2
2	11752	WASHER, FLAT M6 ZINC	2
3	11764	WASHER, LG. DIA. M6 X 30MM ZINC	2
4	11636	WASHER, LOCK M6 ZINC	2
5	11771	SCREW, CAP M6-1.0 X 20MM	2
6	11755	WASHER, FLAT M12 ZINC	8
7	11758	WASHER, LOCK M12 ZINC	8
8	11777	SCREW, CAP M12-1.75 X 35MM	8
9	CNA-61-20-60-04	BEARING	4
10	CNA-27-10-16-07	COLLAR	2
11	CNA-80-20-20-50	BINDING WHEEL	2
12	11784	SCREW, SKT. HD. M8-1.25 X 16MM	6
13	11756	WASHER, FLAT M20 ZINC	2
14	CNA-27-10-16-05	WHEEL AXIS	1
15	CNA-27-10-16-06	WHEEL ON DRIVE MOTOR	2
16	11791	SCREW, SET M5-0.8 X 6MM	2



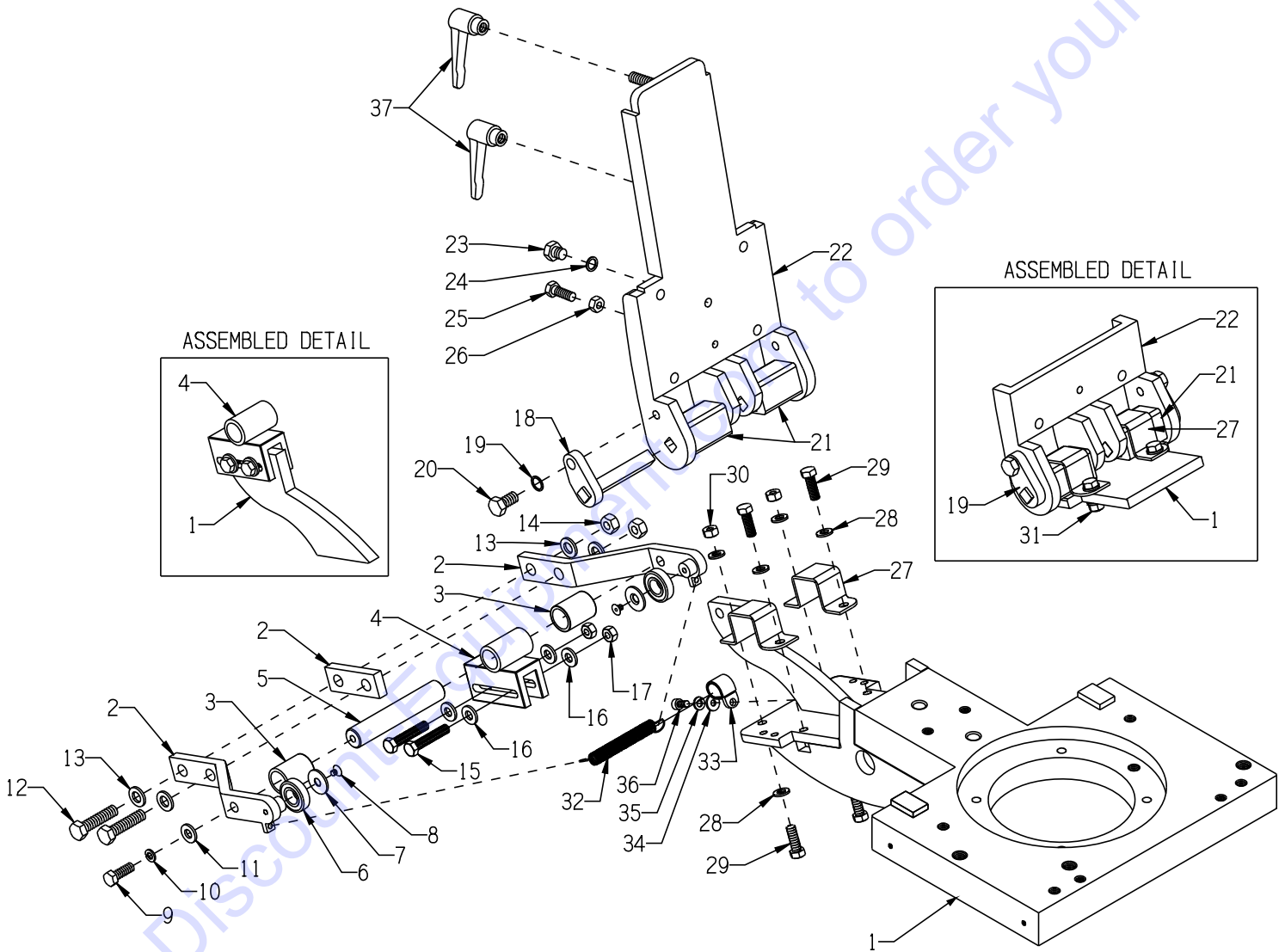
A Division of Equipment Development Company, Inc.

Printed in USA

JWA ©2014

Page 9

ILLUSTRATION 4: DRIVE MOTOR MOUNT & ADJUSTMENT LEVER GROUPING

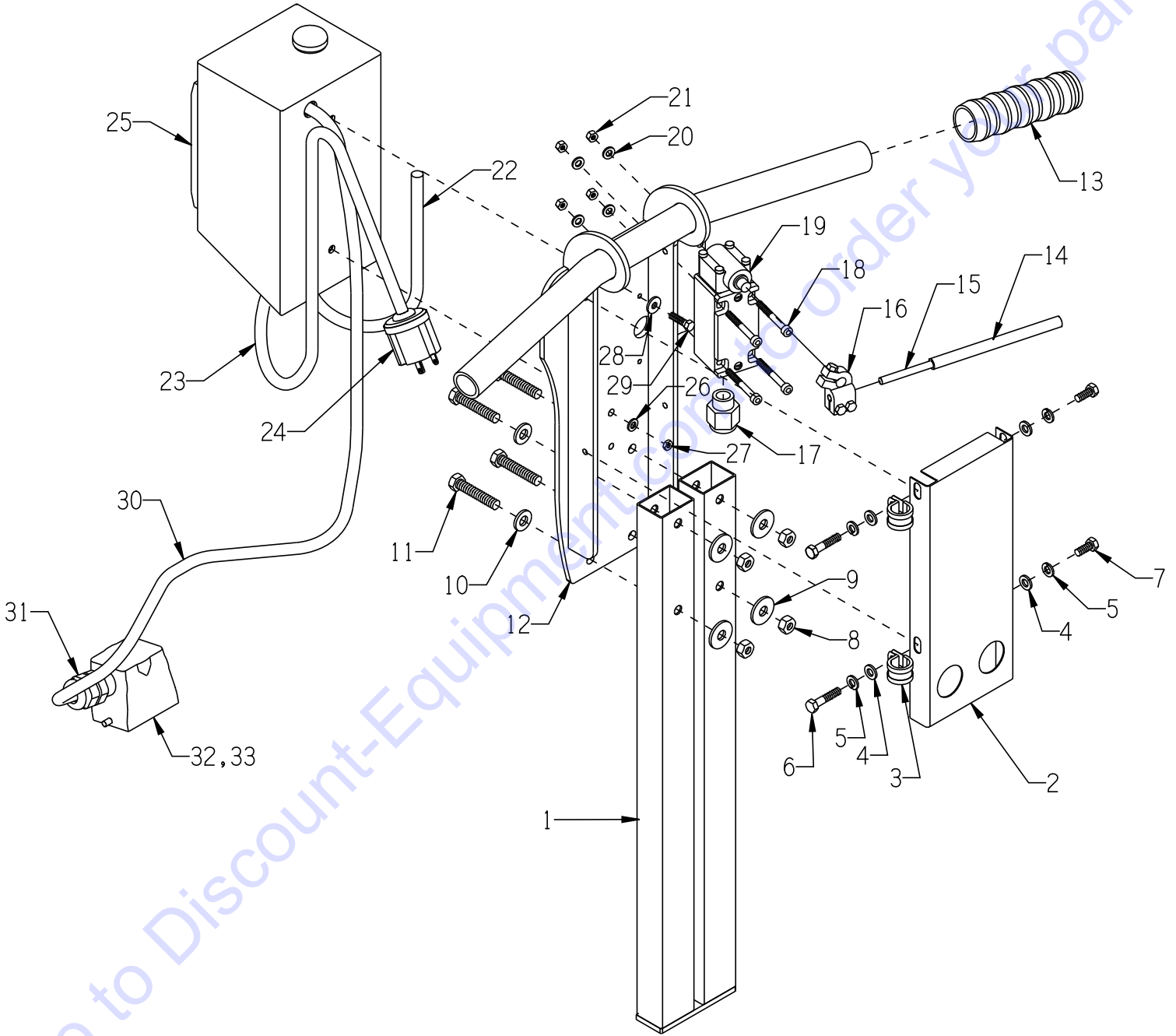


**PARTS LISTING - ILLUSTRATION 4:
DRIVE MOTOR MOUNT & ADJUSTMENT LEVER GROUPING**

ITEM #	PART #	DESCRIPTION	QTY.
1	CNA-27-10-01-00	MAIN PLATE	1
2	CNA-27-10-08-00	DRIVE ADJUSTMENT LEVER (3 PARTS)	1
3	CNA-27-10-08-01	SPACER DRIVE ADJUSTMENT	2
4	CNA-27-10-09-00	BRACKET FOR DRIVE ADJUSTMENT	1
5	CNA-27-10-08-02	SHAFT DRIVE ADJUSTMENT	1
6	CNA-61-20-60-02	BEARING	2
7	11767	WASHER, LG. DIA. M8 COUNTERSINK	2
8	11789	SCREW, FLAT HD SKT M5-0.8 X 8MM	2
9	77263	SCREW, CAP M8-1.25 X 25MM	2
10	11757	WASHER, LOCK M8 ZINC	2
11	11753	WASHER, FLAT M8 ZINC	2
12	11780	SCREW, CAP M10-1.5 X 45MM	4
13	11754	WASHER, FLAT M10 ZINC	4
14	11795	NUT, HEX M10-1.5 ZINC	4
15	11797	SCREW, CAP M8-1.25 X 45MM	2
16	11753	WASHER, FLAT M8 ZINC	4
17	11796	NUT, HEX NYLON LOCK M8-1.25 ZINC	2
18	CNA-27-10-06-03	SQUARE BRACKET	2
19	11763	WASHER, SERRATED 3/8 (M10)	2
20	11774	SCREW, CAP M10-1.5 X 20MM	2
21	CNA-70-26-18-50	RUBBER BLOCK	2
22	CNA-27-10-06-00	MOTOR MOUNTING PLATE	1
23	11773	SCREW, CAP M10-1.5 X 12MM	1
24	11763	WASHER, SERRATED 3/8 (M10)	1
25	77263	SCREW, CAP M8-1.25 X 25MM	1
26	93459	NUT, HEX M8-1.25 ZINC	1
27	CNA-70-26-18-00	BRACKET, RUBBER BLOCK	2
28	11753	WASHER, FLAT M8 ZINC	6
29	77263	SCREW, CAP M8-1.25 X 25MM	4
30	11796	NUT, HEX NYLON LOCK M8-1.25 ZINC	2
31	93459	NUT, HEX M8-1.25 ZINC	2
32	CNA-61-41-10-50	TENSION SPRING	1
33	CNA-05-42-18-12	CLAMP, LOOM, 18MM	1
34	11752	WASHER, FLAT M6 ZINC	1
35	11636	WASHER, LOCK M6 ZINC	1
36	11782	SCREW, SKT. HD. M6-1.0 X 12MM	1
37	CNA-GN604-95-10-I	CLAMPING LEVER	2



ILLUSTRATION 5: HANDLE ASSEMBLY

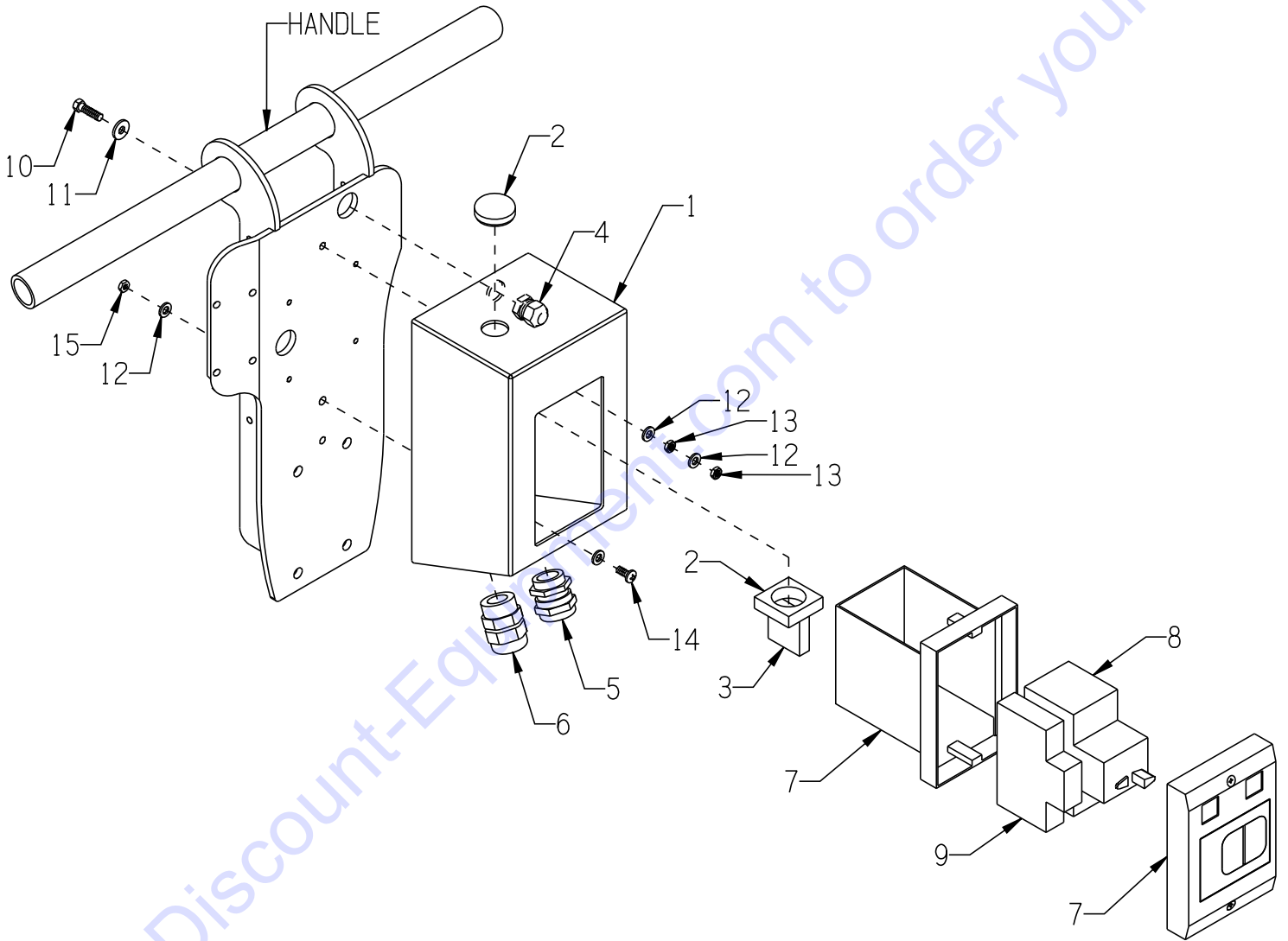


Go to Discount-Equipment.com to order your parts

PARTS LISTING - ILLUSTRATION 5: HANDLE ASSEMBLY			
ITEM #	PART #	DESCRIPTION	QTY.
1	CNA-27-10-07-00	HANDLE BRACKET	1
2	CNA-27-10-36-00	HANDLE COVER	1
3	28514	CLAMP, LOOM, 12MM	2
4	11752	WASHER, FLAT M6 ZINC	4
5	11636	WASHER, LOCK M6 ZINC	4
6	51229	SCREW, CAP M6-1.0 X 30MM	2
7	11769	SCREW, CAP M6-1.0 X 16MM	2
8	93459	NUT, HEX M8-1.25 ZINC	4
9	11765	WASHER, LG. DIA. M8 X 25MM ZINC	4
10	11753	WASHER, FLAT M8 ZINC	4
11	11797	SCREW, CAP M8-1.25 X 45MM	4
12	CNA-27-10-35-00	HANDLE	1
13	CNA-70-21-26-10	RUBBER GRIP	2
14	28516	RUBBER GRIP 6MM X 10MM X 125MM	1
15	CNA-30-10-03-04	DRIVE UNIT LEVER	1
16	CNA-50-20-10-02	DRIVE UNIT SWITCH HEAD	1
17	28506	CORD GRIP, PLASTIC M20-1.5	1
18	11781	SCREW, SKT. HD. M5-0.8 X 45MM	4
19	CNA-50-20-10-01	DRIVE UNIT SWITCH COMPLETE	1
20	11751	WASHER, FLAT M5 ZINC	4
21	93457	NUT, HEX NYLON LOCK M5-0.8 ZINC	4
22	28511	SLEEVE, BRAIDED 300MM LOA, TS-14	1
23	28519	POWER CORD 2.5MM/3 X 900MM(36") NOTE: WIRES ARE BLUE, BROWN & YELLOW W/ GREEN STRIPE.	1
24	78114	PLUG, STRAIGHT 15A/125V NEMA 5-15P	1
25	-----	SWITCH BOX ASSEMBLY (SEE ILLUS. 6)	1
26	11760	WASHER, SERRATED #10 (M5)	1
27	93457	NUT, HEX NYLON LOCK M5-0.8 ZINC	1
28	11751	WASHER, FLAT M5 ZINC	1
29	77223	SCREW, CAP M5-0.8 X 20MM	1
30	28513	SLEEVE, BRAIDED 1000MM LOA, TS-14	1
31	28506	CORD GRIP, PLASTIC M20-1.5	1
32	CNA-50-20-20-13	SOCKET HOUSING W/ GLAND (HOOD P712 606 MV)	1
33	CNA-50-20-20-121	JACK IN HOUSING (FEMALE SCREW TERMINAL INSERT 710 106)	1



ILLUSTRATION 6: SWITCHBOX ASSEMBLY



PARTS LISTING - ILLUSTRATION 6: SWITCHBOX ASSEMBLY

ITEM #	PART #	DESCRIPTION	QTY.
1	CNA-27-10-36-01	SWITCHBOX	1
2	CNA-216773	INDICATOR LIGHT	1
3	CNA-50-20-33-061	LED ELEMENT	1
4	28505	CORD GRIP, PLASTIC M16-1.5	1
5	28508	CORD GRIP, S.S. M25-1.5	1
6	28507	CORD GRIP, PLASTIC M25-1.5	1
7	CNA-51-11-11-11	SWITCH HOLDER & COVER	1
8	CNA-51-11-11-20-US	MOTOR PROTECTIVE CIRCUIT BREAKER EATON PKZM01-20	1
9	CNA-51-20-30-01-US	LOW VOLTAGE PROTECTIVE EATON U-PKZ0 UNDERVOLTAGE TRIP	1
10	77223	SCREW, CAP M5-0.8 X 20MM	1
11	11751	WASHER, FLAT M5 ZINC	1
12	11760	WASHER, SERRATED #10 (M5)	4
13	11794	NUT, HEX JAM M5-0.8 ZINC	2
14	11792	SCREW, MACHINE M5-0.8 X 12MM PHILLIPS HD	1
15	93457	NUT, HEX NYLON LOCK M5-0.8 ZINC	1



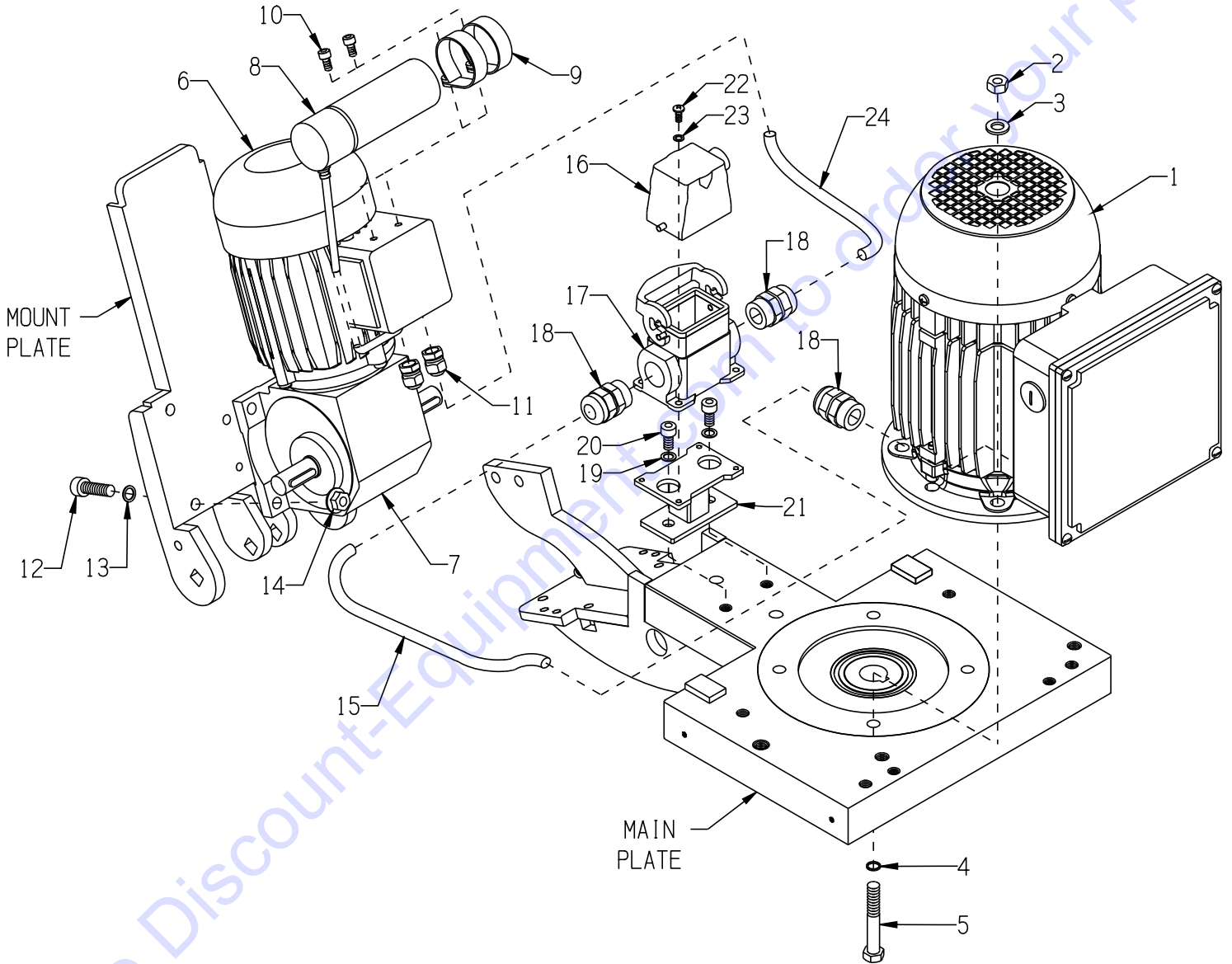
A Division of Equipment Development Company, Inc.

Printed in USA

JWA ©2014

Page 15

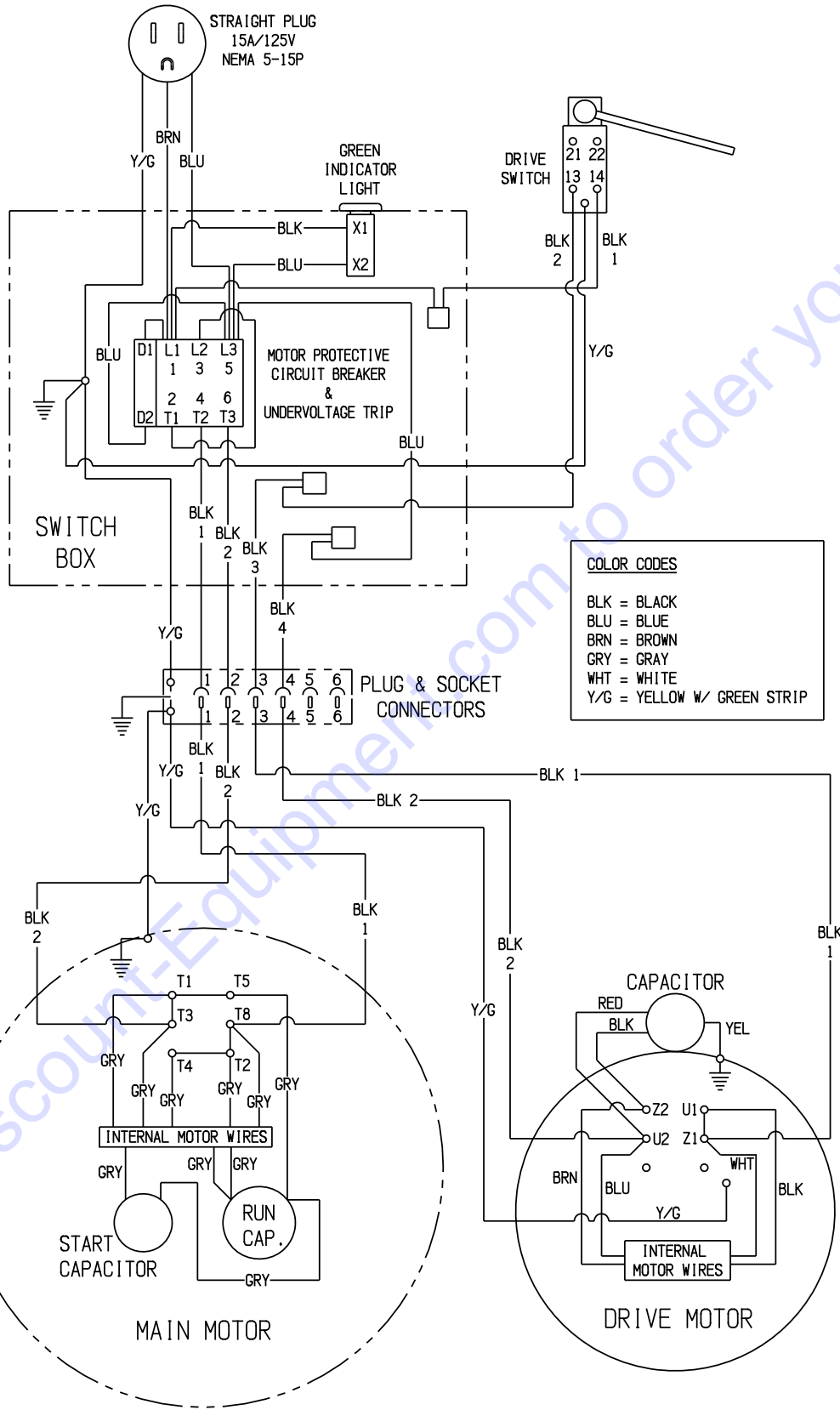
ILLUSTRATION 7: MOTOR GROUPING



PARTS LISTING - ILLUSTRATION 7: MOTOR GROUPING			
ITEM #	PART #	DESCRIPTION	QTY.
1	CNA-55-03-11-20-US 28517 28518	MOTOR, WEG 1.1KW 110/220V 60Hz (MAIN) REPLACEMENT PARTS: START CAPACITOR RUN CAPACITOR	1
2	11795	NUT, HEX M10-1.5 ZINC	4
3	11754	WASHER, FLAT M10 ZINC	4
4	11763	WASHER, SERRATED 3/8" (M10)	4
5	11776	SCREW, CAP M10-1.5 X 70MM	4
6	CNA-50-21-22-41-US	MOTOR, WEG 0.37KW 110V 60Hz (DRIVE)	1
7	CNA-50-20-20-41-G	GEARBOX	1
8	CNA-50-21-23-41-US	CAPACITOR	1
9	28515	CLAMP, LOOM, 40MM	2
10	11782 28026	SCREW, SKT. HD. M6-1.0 X 12MM NUT, HEX NYLON LOCK M6-1.0 (INSIDE BOX, NOT SHOWN)	2 2
11	28505	CORD GRIP, PLASTIC M16-1.5	2
12	11787	SCREW, SKT. HD. M10-1.5 X 35MM	4
13	11763	WASHER, SERRATED 3/8 (M10)	4
14	11807	NUT, SERRATED FLANGE M10-1.5 ZINC	4
15	28512	SLEEVE, BRAIDED 350MM LOA	
16	CNA-50-20-20-13 CNA-50-20-20-121	SOCKET HOUSING W/ GLAND (HOOD P712 606 MV) JACK IN HOUSING (FEMALE SCREW TERMINAL INSERT 710 106)	1
17	CNA-21-23-13 CNA-50-20-20-131	PLUG HOUSING (P751 424 MS) PLUG PIN MOUNTING (MALE SCREW TERMINAL INSERT 710 206)	1
18	28507	CORD GRIP, PLASTIC M25-1.5	3
19	11762	WASHER, SERRATED 5/16 (M8)	2
20	11784	SCREW, SKT. HD. M8-1.25 X 16MM	2
21	CNA-27-10-32-04	CONNECTION BRACKET	1
22	11792	SCREW, MACHINE M5-0.8 X 12MM	4
23	11760	WASHER, SERRATED #10 (M5)	4
24	28510	SLEEVE, BRAIDED 250MM LOA, TS-14	1



WIRING DIAGRAM



Go to DiscountEquipment.com to order your parts

PARTS FINDER

**Search Website
by Part Number**



**Search Manual
Library For Parts
Manual & Lookup Part
Numbers – Purchase
or Request Quote**

Search Manuals

Enter your information to help us find the right parts manual for your machine.

* Brand:

* Model:

* Serial:

* Part Number:

SEARCH

**Can't Find Part or
Manual? Request Help
by Manufacturer,
Model & Description**

Parts Order Form

Please fill in the following information to help us find the right part for your machine.

Manufacturer:	<input type="text"/>
Model:	<input type="text"/>
Description:	<input type="text"/>
Part Number:	<input type="text"/>
Quantity:	<input type="text"/>
Notes:	<input type="text"/>

Submit

Discount-Equipment.com is your online resource for quality parts & equipment.

Florida: **561-964-4949** Outside Florida TOLL FREE: **877-690-3101**

Need parts?

Click on this link: <http://www.discount-equipment.com/category/5443-parts/> and choose one of the options to help get the right parts and equipment you are looking for. Please have the machine model and serial number available in order to help us get you the correct parts. If you don't find the part on the website or on one of the online manuals, please fill out the request form and one of our experienced staff members will get back to you with a quote for the right part that your machine needs.

We sell worldwide for the brands: Genie, Terex, JLG, MultiQuip, Mikasa, Essick, Whiteman, Mayco, Toro Stone, Diamond Products, Generac Magnum, Airman, Haulotte, Barreto, Power Blanket, Nifty Lift, Atlas Copco, Chicago Pneumatic, Allmand, Miller Curber, Skyjack, Lull, Skytrak, Tsurumi, Husquvarna Target, Stow, Wacker, Sakai, Mi-T-M, Sullair, Basic, Dynapac, MBW, Weber, Bartell, Bennar Newman, Haulotte, Ditch Runner, Menegotti, Morrison, Contec, Buddy, Crown, Edco, Wyco, Bomag, Laymor, EZ Trench, Bil-Jax, F.S. Curtis, Gehl Pavers, Heli, Honda, ICS/PowerGrit, IHI, Partner, Imer, Clipper, MMD, Koshin, Rice, CH&E, General Equipment, Amida, Coleman, NAC, Gradall, Square Shooter, Kent, Stanley, Tamco, Toku, Hatz, Kohler, Robin, Wisconsin, Northrock, Oztec, Toker TK, Rol-Air, APT, Wylie, Ingersoll Rand / Doosan, Innovatech, Con X, Ammann, Mecalac, Makinex, Smith Surface Prep, Small Line, Wanco, Yanmar