



WEDGELESS DUAL-DISC FLOOR GRINDER

REDESIGNED EDCO CONCRETE FLOOR GRINDERS!!

Grind Wedge-Less: The need for wooden wedges goes away with EDCO's new wedge-less Grinders and Dyma-Slider accessories. Using only redesigned holding cases, the profitable Dyma-Serts and PCDyma-Serts slide onto the new grinders. No tools required. New grinding and resurfacing accessories are also available, making EDCO Floor Grinders more versatile.

- Grind Level: Using EDCO's exclusive Leveling System you can adjust the machine's height, use a wide range of accessories, and truly grind level. Level grinding is quick, smoother, easy on the operator, and increases accessory production.
- Velcro Dust Shroud: The new heavy-duty Velcro Dust Shroud increases dust containment. Simply adjust according to accessory height.
- Multi-Vac Port: EDCO's Multi-Vac Port is compatible with both a 2" or 3" vacuum hose, leading to more dust prevention options. EDCO Vacuum Systems eliminate airborne dust and shorten clean up times.
- New Laser Cut Weight Trays: Built-in weight trays accept up to 80lbs of extra weight, increasing production.



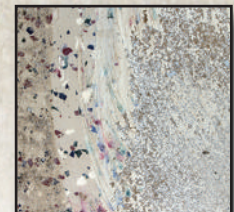
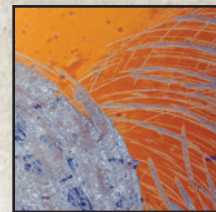
PRODUCTION RATE: 22" Working Width will grind approximately 400 - 500 Sq. ft. per hour at 1/32" depth with EDCO Dyma-Serts™

INCLUDES: 2 - New Slide-On Multi-Accessory Discs, which accept Dyma-Serts, Strip-Serts and all other DYMA-SLIDER accessories, 2" - 3" Multi-Vacuum Port and Water Port, Electric models have 115/230 Voltage Selector Switch

REQUIRES: 6 - Grinding Accessories required per loading

IDEAL FOR: Production grinding and floor cleaning in large or small areas such as airports, warehouses, parking decks, manufacturing plants, malls and sports arenas

- Light grinding or cleaning of concrete surfaces
- Leveling uneven joints
- Removing mastics, thin-set, high spots, epoxies and urethanes
- Lightly texturing slippery concrete surfaces



Wedge-less Dual-Disc Floor Grinder

MODEL #	PART #	POWER	HORSE POWER	PHASE	AMPS	*RPM's	BELTS	LENGTH	WIDTH	HEIGHT	WEIGHT
2EC-NG-1.5	59200	Electric	1.5 HP, 115/230 V	Single	16/8	231	Std "V" Belt	46"	27"	37"	258 lbs
2GC-NG-11H	59300	Gasoline	**11 HP	NA	NA	562	Std "V" Belt	46"	27"	37"	282 lbs

* RPM's are based on the machine's accessory speed. * NET HORSEPOWER STATEMENT - *As rated by the engine manufacturer. The power rating of the engine indicated in this document is the net power output tested on a production engine for the engine model and measured in accordance with SAE J1349 at 3600 rpm. Mass production engines may vary from this value. Actual power output for the engine installed in the final machine will vary depending on numerous factors, including the opening speed of the engine in application, environmental conditions, maintenance, and other variables. ** Call for availability.



TO PURCHASE THIS PRODUCT PLEASE CONTACT US



**Equipment Financing and
Extended Warranties Available**



**Discount-Equipment.com is your online resource for
commercial and industrial quality parts and equipment sales.**

561-964-4949

visit us on line @ www.discount-equipment.com

Select an option below to find your Equipment

Search by Manufacturer

Search by Product Type

Request a Quote

We sell worldwide for the brands: Genie, Terex, JLG, MultiQuip, Mikasa, Essick, Whiteman, Mayco, Toro Stone, Diamond Products, Generac Magnum, Airman, Haulotte, Barreto, Power Blanket, Nifty Lift, Atlas Copco, Chicago Pneumatic, Allmand, Miller Curber, Skyjack, Lull, Skytrak, Tsurumi, Husquvarna Target, Stow, Wacker, Sakai, Mi-T-M, Sullair, Basic, Dynapac, MBW, Weber, Bartell, Bennar Newman, Haulotte, Ditch Runner, Menegotti, Morrison, Contec, Buddy, Crown, Edco, Wyco, Bomag, Laymor, EZ Trench, Bil-Jax, F.S. Curtis, Gehl Pavers, Heli, Honda, ICS/PowerGrit, IHI, Partner, Imer, Clipper, MMD, Koshin, Rice, CH&E, General Equipment, Amida, Coleman, NAC, Gradall, Square Shooter, Kent, Stanley, Tamco, Toku, Hatz, Kohler, Robin, Wisconsin, Northrock, Oztec, Toker TK, Rol-Air, APT, Wylie, Ingersoll Rand / Doosan, Innovatech, Con X, Ammann, Mecalac, Makinex, Smith Surface Prep, Small Line, Wanco, Yanmar