



REVISED STARTING
SERIAL #17071723

PARTS LIST MANUAL

VAC-290



290 CFM HEPA MAXX VACUUM

PART #	MODEL #	POWER OPTION
ED33280K	WS2320	TRIPLE MOTOR, 4.0 HP 120V 19A



PARTS FINDER

**Search Website
by Part Number**



**Search Manual
Library For Parts
Manual & Lookup Part
Numbers – Purchase
or Request Quote**

Search Manuals

Enter your information to help us find the right parts manual for your machine.

* Brand:

* Model:

* Serial:

* Part Number:

SEARCH

**Can't Find Part or
Manual? Request Help
by Manufacturer,
Model & Description**

Parts Order Form

Please fill in the following information to help us find the right part for your machine.

Manufacturer:

Model:

Description:

Quantity:

Part Number:

Part Name:

Part Description:

Part Category:

Part Location:

Part Status:

Part Condition:

Part Material:

Part Color:

Part Weight:

Part Dimensions:

Part Price:

Part Lead Time:

Part Availability:

Part Notes:

Submit

Discount-Equipment.com is your online resource for quality parts & equipment.

Florida: **561-964-4949** Outside Florida TOLL FREE: **877-690-3101**

Need parts?

Click on this link: <http://www.discount-equipment.com/category/5443-parts/> and choose one of the options to help get the right parts and equipment you are looking for. Please have the machine model and serial number available in order to help us get you the correct parts. If you don't find the part on the website or on one of the online manuals, please fill out the request form and one of our experienced staff members will get back to you with a quote for the right part that your machine needs.

We sell worldwide for the brands: Genie, Terex, JLG, MultiQuip, Mikasa, Essick, Whiteman, Mayco, Toro Stone, Diamond Products, Generac Magnum, Airman, Haulotte, Barreto, Power Blanket, Nifty Lift, Atlas Copco, Chicago Pneumatic, Allmand, Miller Curber, Skyjack, Lull, Skytrak, Tsurumi, Husquvarna Target, Stow, Wacker, Sakai, Mi-T-M, Sullair, Basic, Dynapac, MBW, Weber, Bartell, Bennar Newman, Haulotte, Ditch Runner, Menegotti, Morrison, Contec, Buddy, Crown, Edco, Wyco, Bomag, Laymor, EZ Trench, Bil-Jax, F.S. Curtis, Gehl Pavers, Heli, Honda, ICS/PowerGrit, IHI, Partner, Imer, Clipper, MMD, Koshin, Rice, CH&E, General Equipment, Amida, Coleman, NAC, Gradall, Square Shooter, Kent, Stanley, Tamco, Toku, Hatz, Kohler, Robin, Wisconsin, Northrock, Oztec, Toker TK, Rol-Air, APT, Wylie, Ingersoll Rand / Doosan, Innovatech, Con X, Ammann, Mecalac, Makinex, Smith Surface Prep, Small Line, Wanco, Yanmar

READ AND UNDERSTAND THE OPERATORS INSTRUCTION MANUAL THOROUGHLY BEFORE ATTEMPTING TO OPERATE THIS EQUIPMENT.



Death or serious injury could occur if this machine is used improperly.



SAFETY MESSAGES

- Safety Instructions are preceded by a graphic alert symbol of DANGER, WARNING, or CAUTION.



Indicates an imminent hazard which, if not avoided, will result in death or serious injury.



Indicates an imminent hazard which, if not avoided, can result in death or serious injury.



Indicates hazards which, if not avoided, could result in serious injury and or damage to the equipment.

GASOLINE/PROPANE POWERED EQUIPMENT



- Engine exhaust from this product contains chemicals known to the State of California to cause cancer, birth defects or other reproductive harm.



- Gasoline is extremely flammable and poisonous. It should only be dispensed in well ventilated areas, and with a cool engine.

- Small gasoline engines produce high concentrations of carbon monoxide (CO) example: a 5 HP 4 cycle engine operation in an enclosed 100,000 cu. ft. area with only one change of air per hour is capable of providing deadly concentrations of CO in less than fifteen minutes. Five changes of air in the same area will produce noxious fumes in less than 30 minutes. Gasoline or propane powered equipment should not be used in enclosed or partially enclosed areas. Symptoms of CO poisoning include, headache, nausea, weakness, dizziness, visual problems and loss of consciousness. If symptoms occur - get into fresh air and seek medical attention immediately.

ELECTRICAL POWERED EQUIPMENT



Extreme care must be taken when operating electric models with water present: Ensure power cord is properly grounded, is attached to a Ground-Fault-Interrupter (GFI) outlet, and is undamaged.

- Check all electrical cables - be sure connections are tight and cable is continuous and in good condition. Be sure cable is correctly rated for both the operating current and voltage of this equipment.
- Improper connection of the equipment-grounding conductor can result in a risk of electric shock. Check with qualified electrician or service person if there is any doubt as to whether the outlet is properly grounded. Adhere to all local codes and ordinances.
- **NOTE:** In the event of a malfunction or breakdown, grounding provides a path of least resistance for the electric current to dissipate. The motor is equipped with a grounded plug and must be connected to an outlet that is properly installed and properly grounded. DO NOT modify the plug provided on the motor. If the plug does not fit the outlet have a qualified electrician install the proper receptacle.
- Switch motor OFF **before** disconnecting power.

- Do not disconnect power by pulling cord. To disconnect, grasp the plug, not the cord.
- Unplug power cord at the machine when not in use and before servicing.

GENERAL INSTRUCTIONS


- Equipment should only be operated by trained personnel in good physical condition and mental health (not fatigued). The operator and maintenance personnel must be physically able to handle the bulk weight and power of this equipment.
- This is a one person tool. Maintain a safe operating distance to other personnel. It is the **operators' responsibility** to keep other people (workers, pedestrians, bystanders, etc.) away during operation. Block off the work area in all directions with roping, safety netting, etc. for a safe distance. Failure to do so may result in others being injured by flying debris or exposing them to harmful dust and noise.
- This equipment is intended for commercial use only.
- For the operator's safety and the safety of others, always keep all guards in place during operation.
- Never let equipment run unattended.



- Personal Protection Equipment and proper safety attire must be worn when operating this machinery. The operator must wear approved safety equipment appropriate for the job such as hard hat and safety shoes when conditions require. Hearing protection **MUST** be used (operational noise levels of this equipment may exceed 85db). Eye protection **MUST** be worn at all times.



- Keep body parts and loose clothing away from moving parts. Failure to do so could result in dismemberment or death.

- Do not modify the machine.
- Stop motor/engine when adjusting or servicing this equipment.
-  Maintain a safe operating distance from flammable materials. Sparks from the cutting-action of this machine can ignite flammable materials or vapors.

DUST WARNING



Some dust created by power sanding, sawing, grinding, drilling, and other construction activities contains chemicals known to cause cancer, birth defects, or other reproductive harm. Some examples of these chemicals are:

- Lead from lead-based paints, and
- Crystalline silica from bricks and concrete and other masonry products.

Your risk of exposure to these chemicals varies depending on how often you do this type of work. To reduce your risk: work in a well ventilated area, use a dust control system, such as an industrial-style vacuum, and wear approved personal safety equipment, such as a dust/particle respirator designed to filter out microscopic particles.

PARTS LIST MANUAL

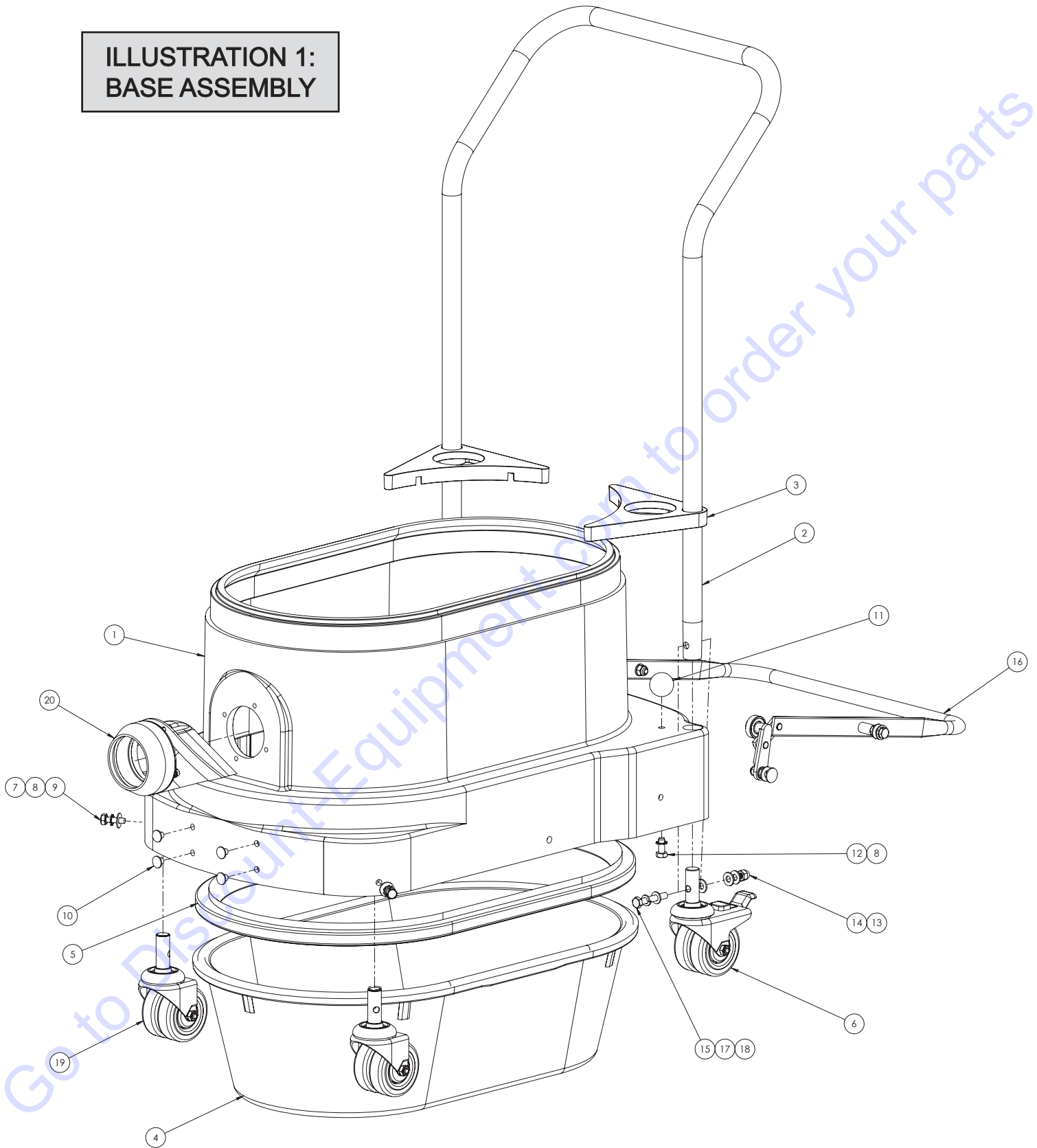
VAC-290

290 CFM HEPA MAXX VACUUM

TABLE OF CONTENTS

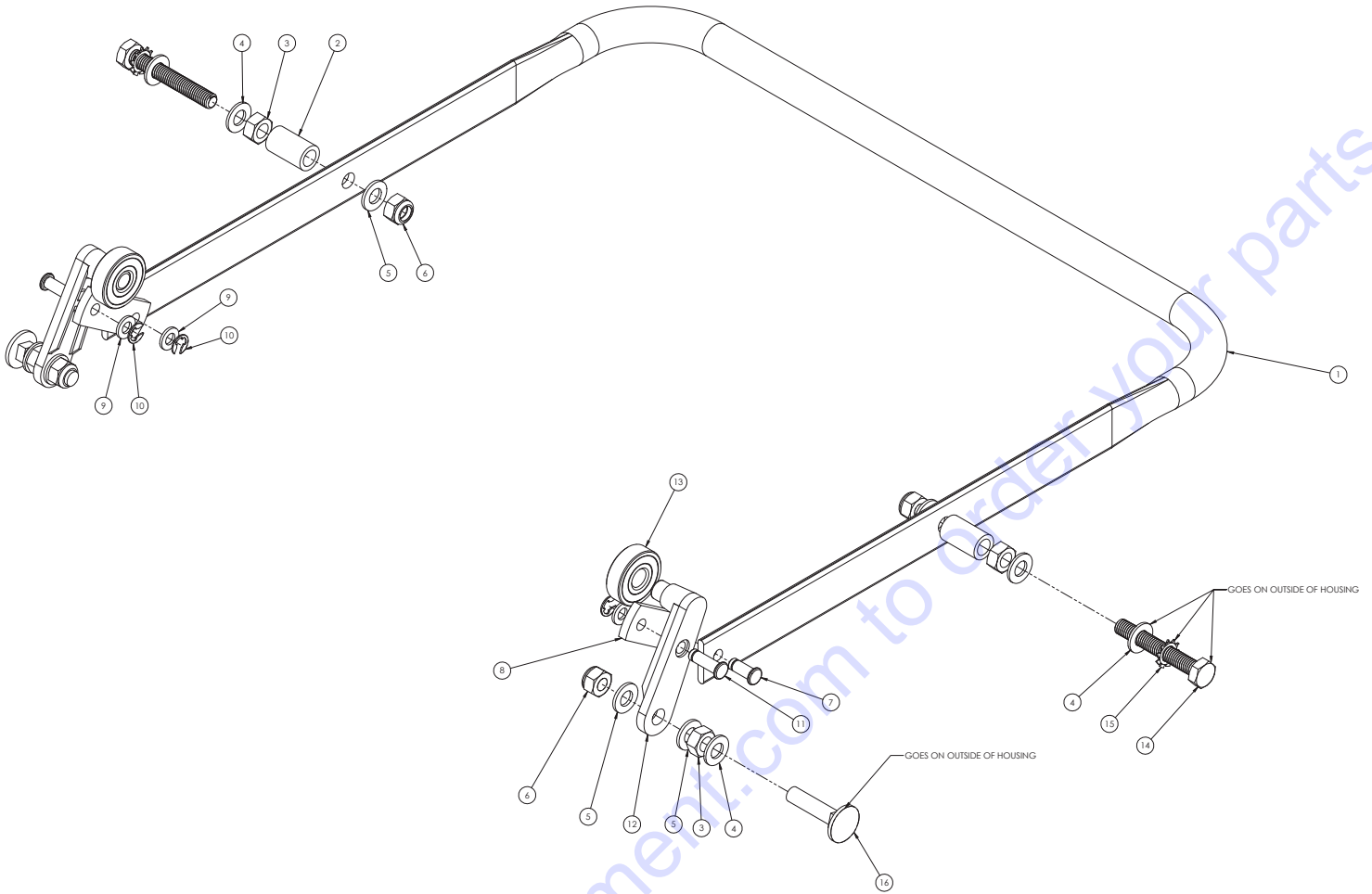
<u>Section</u>	<u>Page Number</u>
Safety Messages and General Instructions	2
How To Order Replacement Parts	3
Illustration 1: Base Assembly	4, 5
Illustration 2: Dustpan Lever Assembly	6
Illustration 3: 70mm Inlet Assembly	7
Illustration 4: 2.6M Filter & Manual Shaker Assembly	8, 9
Illustration 5: HEPA Maxx Filter Assembly	10, 11
Illustration 6: Hose and Connector	12
Illustration 7: Silencer Assembly	13
Illustration 8: Motor Deck Assembly	14, 15
Illustration 9: Motor Switch Assembly, 120V	16
Wiring Schematic	17
Decal Sheet	18
Limited Equipment Warranty of Sale - Terms & Conditions	19

**ILLUSTRATION 1:
BASE ASSEMBLY**



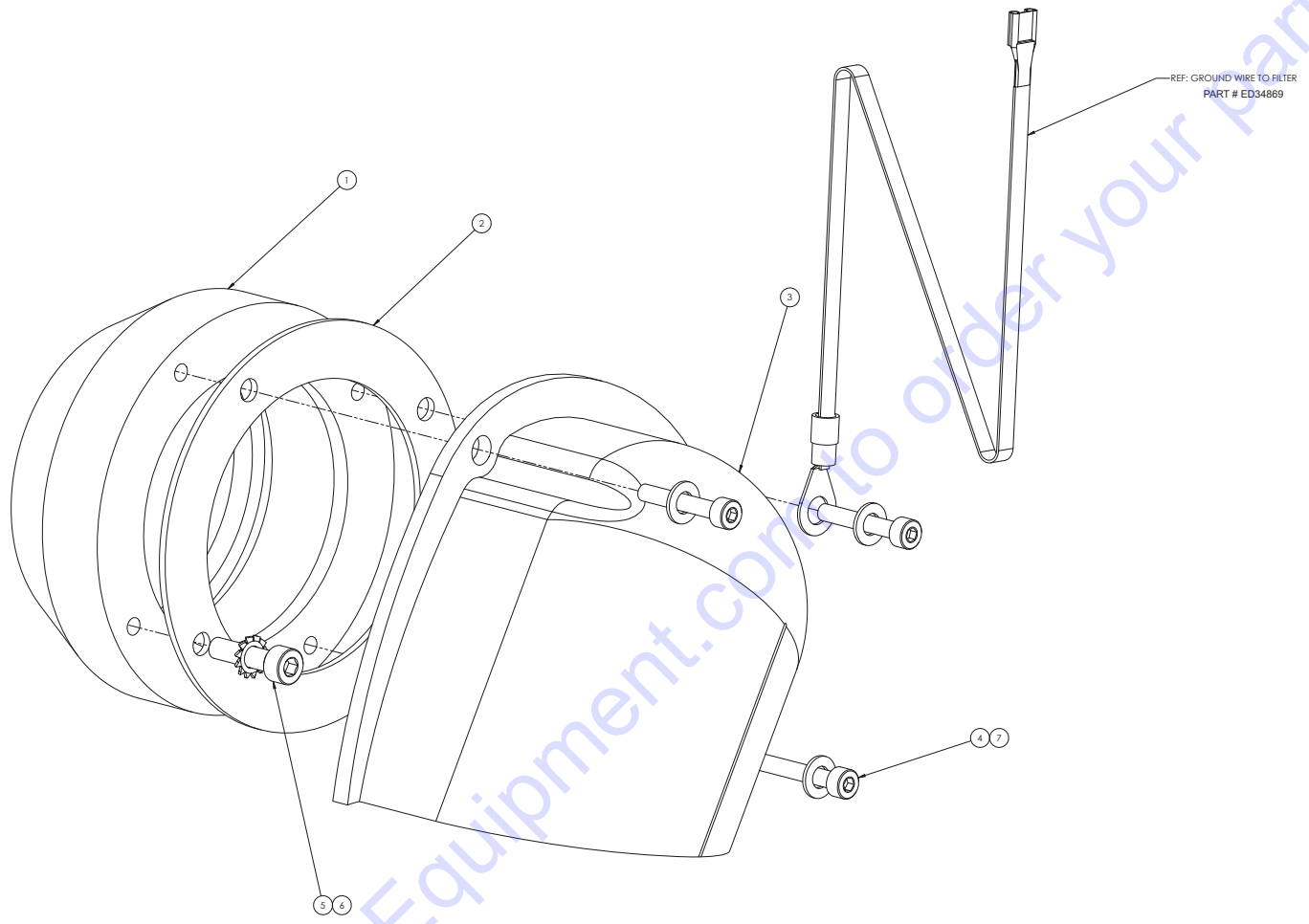
DUSTPAN GASKET #ED2509865

PARTS LISTING - ILLUSTRATION 1: BASE ASSEMBLY			
ITEM #	PART #	DESCRIPTION	QTY.
1	ED34808003	LOWER HOUSING, 70MM, RED	1
2	ED25080	PUSH HANDLE	1
3	ED32039R	HANDLE SUPPORT, PLASTIC	2
4	ED34813	DUSTPAN WITH GASKET, RED	1
	ED2509865	DUST PAN REPLACEMENT GASKET	1
5	ED20070	GASKET, LOWER HOUSING	1
6	ED25085	CASTER, DUAL, FIXED, 75MM, W/BRAKE	2
7	ED34882	M8 FLAT WASHER, 8.4 X 20 X 1.3	2
8	ED25037	WASHER EXT STAR M8 ZINC	3
9	ED25054	HEX BOLT M8 X 25 ZINC	2
10	ED22120	PLUG, 8MM, BLACK	4
11	ED25060	KNOB, BLACK, 8MM	1
12	ED25038	SCREW, CAP M8-1.25 X 20MM ZINC	1
13	ED200190	WASHER, M8 BLACK NYLON	6
14	ED32927	NUT, ACORN M8	2
15	ED34810	BOLT, HEX M8 X 50	2
16	ED20010A	DUST PAN LEVER ASSY., DS1 (REFER TO ILLUS. 2 FOR BREAKDOWN)	1
17	ED20050	WASHER SPLIT LOCK M8	2
18	ED25061	WASHER, FLAT M8 ZINC	2
19	ED25084	CASTER, DUAL, SWIVEL, 75MM	2
20	ED30007A	INLET KIT, 70MM, ALUMINUM (REFER TO ILLUS. 3 FOR BREAKDOWN)	1

ILLUSTRATION 2: DUSTPAN LEVER ASSEMBLY

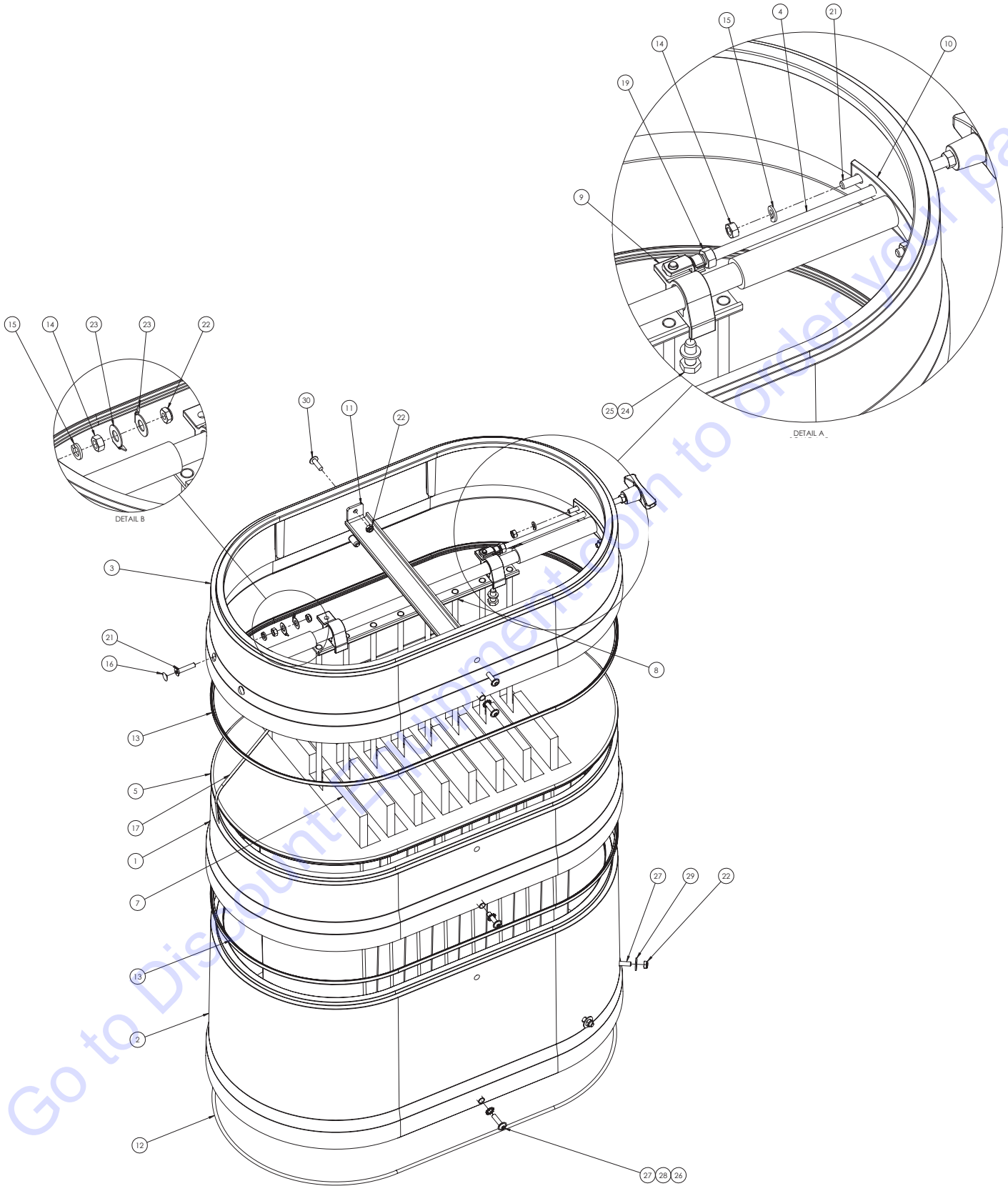
ITEM #	PART #	DESCRIPTION	QTY.
1	ED20010	FOOT LEVER	1
2	ED34812	SPACER FOR FOOT LEVER	2
3	ED20044	NUT, HEX M8 ZINC	4
4	ED34882	WASHER, FLAT M8 ZINC 8.4 X 20 X 1.3	6
5	ED25061	WASHER, FLAT M8 ZINC	6
6	ED30029	NUT, LOCK M8	4
7	ED34921	PIN D6X15	2
8	ED20027	FLAT STEEL PIVOT	2
9	ED25067	WASHER, FLAT M6	4
10	ED34923	C SPRING CLIP	4
11	ED34922	PIN, D6 X 19MM	2
12	ED34852*	DUST PAN TENSION LEVER (*USE ED34852A FOR KIT)	2
13	ED34853*	DUST PAN LEVER BEARING (*USE ED34852A FOR KIT)	2
14	ED34811	BOLT, HEX M8 X 55	2
15	ED25037	WASHER EXT STAR M8 ZINC	2
16	ED25053	BOLT, CARRAIGE M8 X 35	2

ILLUSTRATION 3: 70mm INLET ASSEMBLY



ITEM #	PART #	DESCRIPTION	QTY.
1	ED30007	INLET, 70MM, ALUMINUM	1
2	ED34821	GASKET, 70MM INLET	1
3	ED32958	INLET DEFLECTOR, 70MM, ALUM	1
4	ED328661	SCREW, SOC HD CAP M5 X 25 BLKCOX	3
5	ED32863	SCREW, SOC HD CAP M5 X 20 BLKCOX	1
6	ED32867	WASHER, EXT. STAR, M5, ZINC	1
7	ED328669	WASHER, FLAT, M5, SS	3

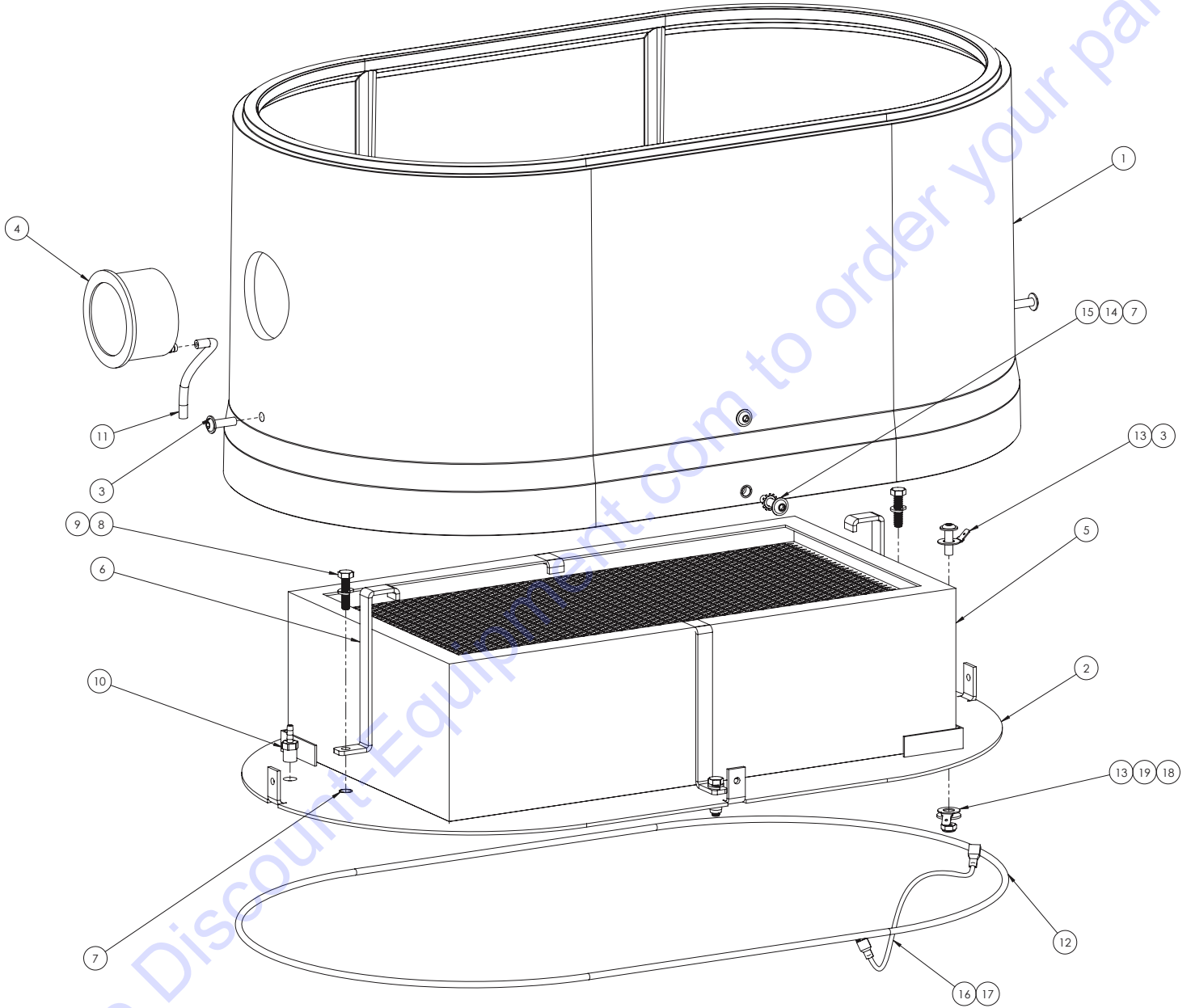
ILLUSTRATION 4: 2.6M FILTER & MANUAL SHAKER ASSEMBLY



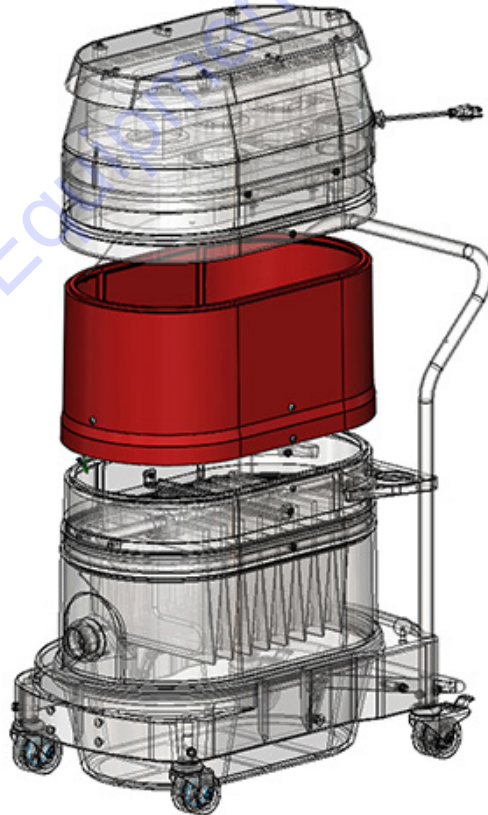
PARTS LISTING - ILLUSTRATION 4: 2.6M FILTER & MANUAL SHAKER ASSEMBLY			
ITEM #	PART #	DESCRIPTION	QTY.
1	ED34823001	HOUSING SPACER, D1, SMALL, RED	1
2	ED34820005	HOUSING SPACER, D1, LRG, RED, HANDLE SUPPORT HOLES	1
3	ED34823003	HOUSING SPACER,D1,PORT,SMALL,RED	1
4	ED22565	SHAKER BAR W/ SWIVEL HANDLE	1
5	ED30091	FILTER, 28 SQ/FT, 2.6M	1
6	ED25047	CLEVIS, DIN 71752G, STEEL	1
7	ED30091F	FILTER INSERT, 2.6M	8
8	ED34807	FILTER SHAKER INSERT, 2.6M	1
9	ED34802	SLIDE ASSEMBLY, W/ HOOK	2
10	ED34806	SHAKER ROD MOUNTING SUPPORT	2
11	ED30095	FILTER BAR SUPPORT, DS1/W2	1
12	ED31376002	GASKET, NEOPRENE, .188", 4.5FT LG	1
13	ED3137766	GASKET, NITRILE SPONGE FOR D1	2
14	ED20040	NUT, HEX M8-8, DIN 934, ZINC	4
15	ED20039	WASHER, SPLIT LOCK, M6 DIN 7980	4
16	ED34871	PLASTIC PLUG 4.5/13	4
17	ED34869	GROUND, DEFLECTOR, 2.6 FILTER	1
18	ED34804	SLIDE BAR, FILTER MANUAL SHAKER	1
19	ED20044	NUT, HEX M8-8, DIN 934, ZINC	1
20	ED20045	NUT, SQUARE, M8, ZINC	2
21	ED34815	SCREW, SOC FH CAP M6 X 30	4
22	ED34876	NUT, LOCK M6 ZINC	7
23	ED34998	GROUND CONNECTION, FOR BOLT	2
24	ED25038	BOLT, HEX, M8 X 20, DIN 933, ZINC	2
25	ED20050	WASHER, SPLIT LOCK, M8	2
26	ED34817A	M6 BLIND PEM	6
27	ED3481701	SCREW, BH SOC, FLANGED, M6 X 25	10
28	ED25000	WASHER, EXT. STAR 1/4"	6
29	ED34819	WASHER, FENDER, M6	4
30	ED34817	SCREW, SOC BH, ULS, M6 X 20	2
31	ED34805	HOSE, 3/4 ID CLEAR	2
32	ED34879	SPRING CLIP, 6 X 12, CLEVIS YOKE	1

ILLUSTRATION 5: HEPA MAXX FILTER ASSEMBLY

PART # ED35192



PARTS LISTING - ILLUSTRATION 5: HEPA MAXX FILTER ASSEMBLY			
ITEM #	PART #	DESCRIPTION	QTY.
1	ED34820002	LRG. HOUSING SPACER, D1-WS, HEPA, RED	1
2	ED34947	HEPA ADAPTER PLATE, DS1	1
3	ED34817	SCREW, SOC BH, ULS, M6 X 20	5
4	ED25143	MINIHELIC, WITH MTG BRKT 10"WC	1
5	ED35211	HEPA FILTER 40 SQ FOOT, WS, DS1	1
6	ED34949	HEPA HOLD DOWN BRACKET, WS	4
7	ED34817A	M6 BLIND PEM	6
8	ED34854	BOLT, HEX, M6 X 25 ZINC	4
9	ED20039	WASHER, SPLIT LOCK, M6 DIN 7980	4
10	ED31632	HOSE BARB, .125 NPT X .25 BARB	1
11	ED34800	HOSE, CLEAR, 1/8" INSTRUMENT	1FT
12	ED31376	GASKET, 3/16 DIA. (6 FT. PIECE)	1
13	ED34998	GROUND CONNECTION, FOR BOLT	2
14	ED25000	WASHER, EXT. STAR 1/4"	2
15	ED3481701	SCREW, BH SOC, FLANGED, M6 X 25	2
16	ED34993	GROUND CABLE, 16 GAUGE, GREEN	8IN
17	ED31713	TERMINAL, 16/14 GA., PUSHON BLUE NYLON	2
18	ED34876	NUT, LOCK M6 ZINC	1
19	ED34819	WASHER, FENDER, M6	1



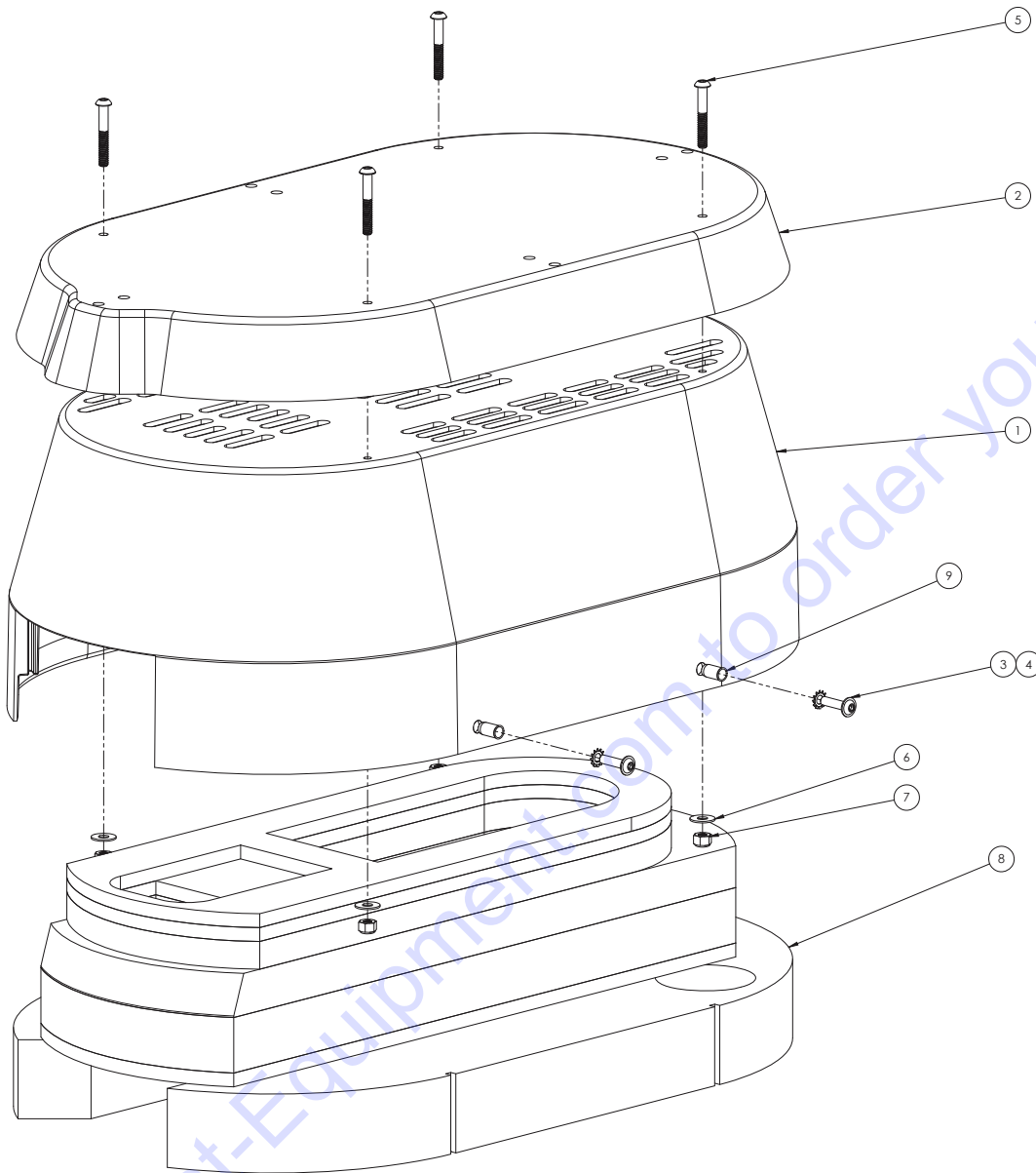
**ILLUSTRATION 6:
HOSE AND CONNECTOR**



ITEM #	PART #	DESCRIPTION	QTY.
1	ED701225	STANDARD HOSE, 3" X 25', CRUSH-PROOF W/ CUFFS	1
	ED7012B	REPLACEMENT 3" HOSE CUFF ONLY	2
	ED501425	*OPTIONAL HOSE, 2" X 25', CRUSH-PROOF (NOT SHOWN)	1
	ED5014B	REPLACEMENT 2" HOSE CUFF ONLY	2
2	ED7018-BL	STANDARD HOSE CONNECTOR 3"BL TO 3" HOSE	1
3	ED5220-BL	OPTIONAL HOSE CONNECTOR 2"BL TO 2" HOSE	1
4	ED30009-BL	OPTIONAL ADAPTER, 3" INLET TO 2" INLET	1
*NOTE: OPTIONAL 2" HOSE REQUIRES ITEMS 3 AND 4.			

ILLUSTRATION 7: SILENCER ASSEMBLY

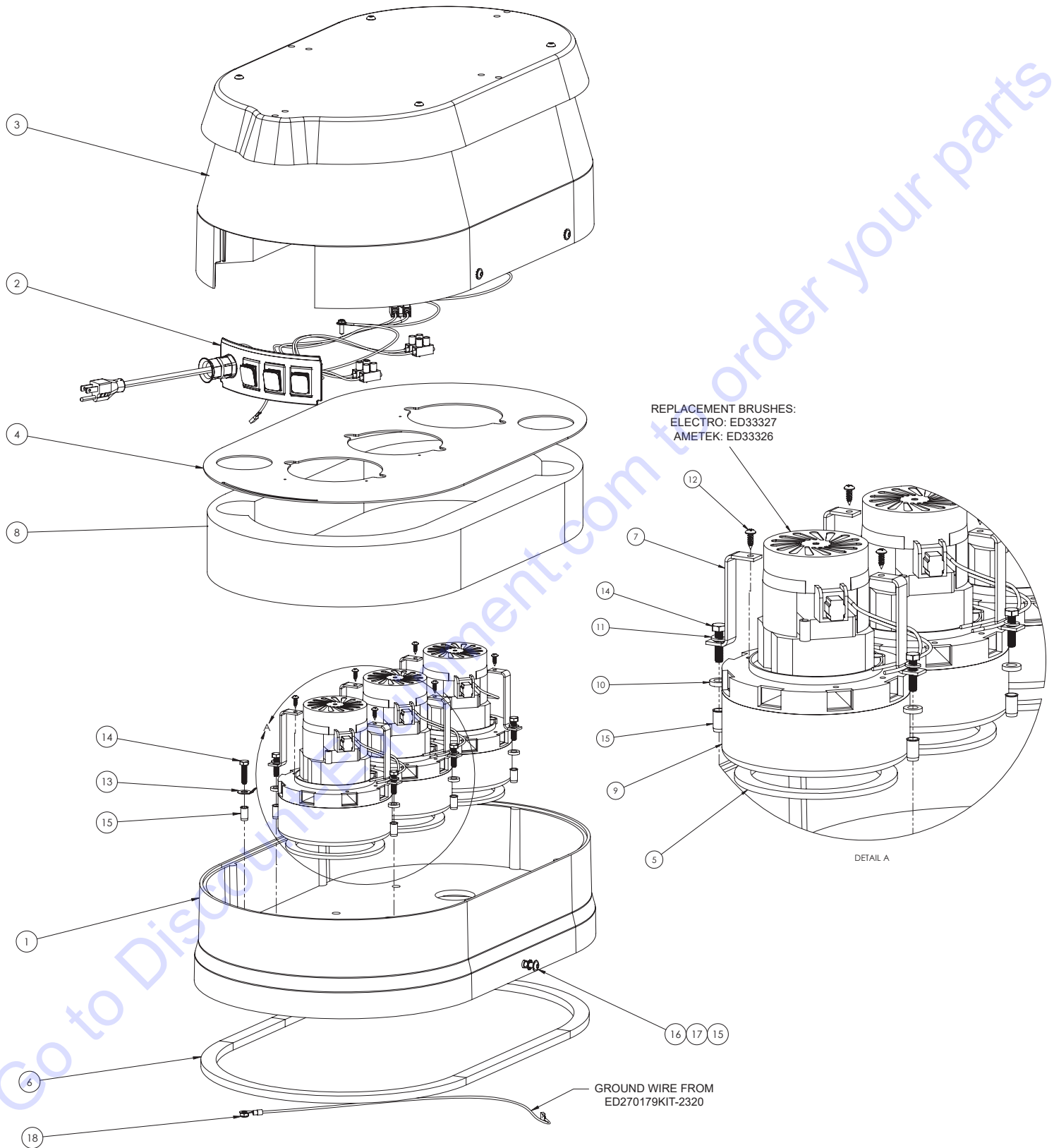
E-VAC290-PL-1117



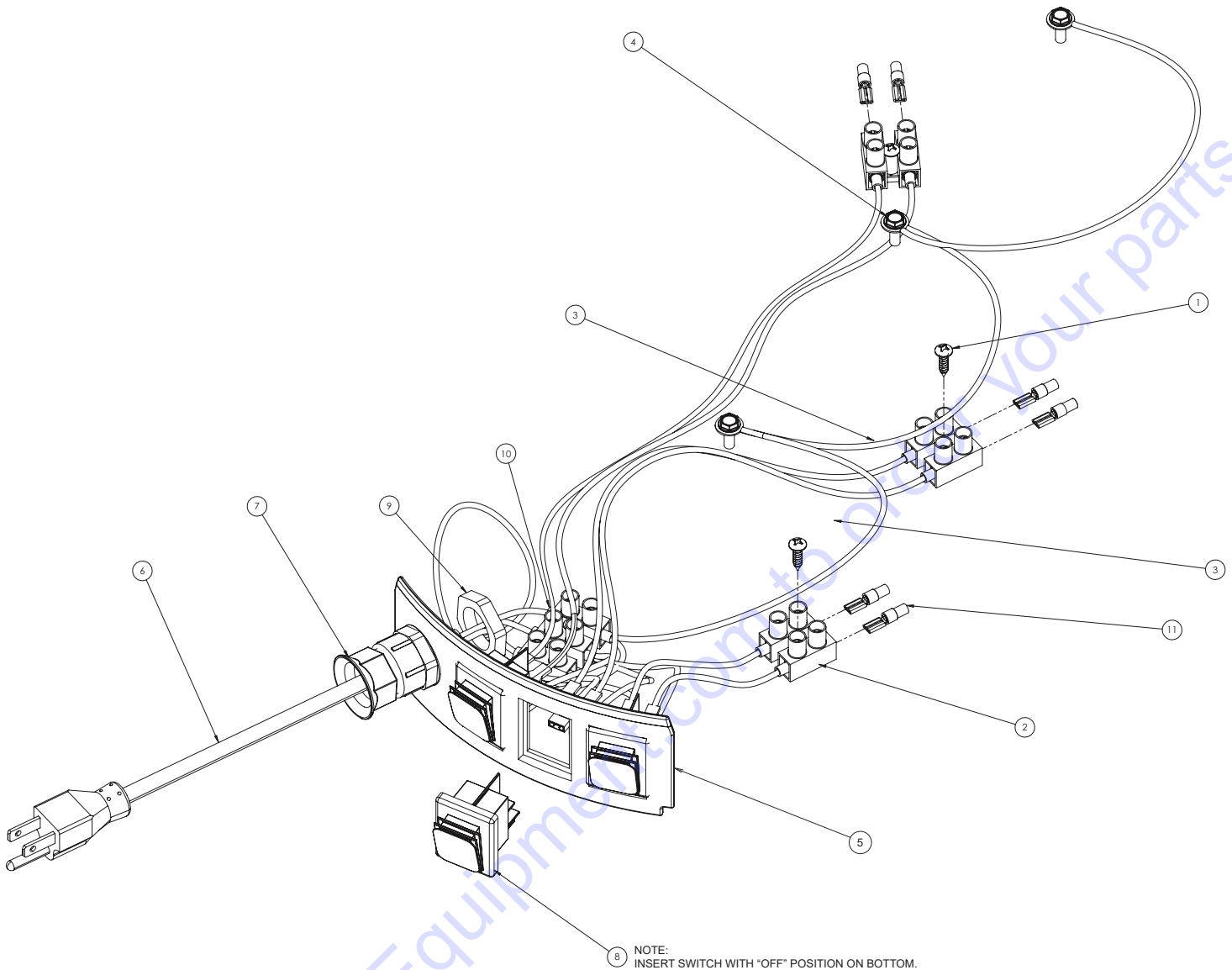
ITEM #	PART #	DESCRIPTION	QTY.
1	ED349802	SILENCER HOOD WITH HOLES, 2 MOTOR RED	1
2	ED32986	RAIN GUARD	1
3	ED3481701	SCREW, BH SOC, FLANGED, M6 X 25	4
4	ED25000	WASHER, EXT. STAR 1/4"	4
5	ED25008	SCREW, BH CAP .25-20X 1.75 SS. PAR. THD.	4
6	ED200180	WASHER, FLAT .25 (.688OD) SS	4
7	ED250025S	NUT, LOCK 1/4-20 SS	4
8	ED34982	SILENCER FOAM ASSEMBLY	1
9	ED34817A	M6 BLIND PEM	4



ILLUSTRATION 8: MOTOR DECK ASSEMBLY



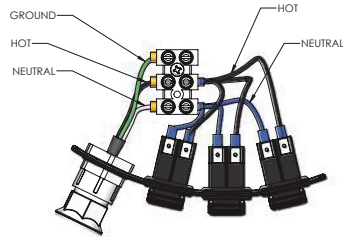
PARTS LISTING - ILLUSTRATION 8: MOTOR DECK ASSEMBLY			
ITEM #	PART #	DESCRIPTION	QTY.
1	ED34983002	MOTOR DECK, 3 HOLES, RED, WS	1
2	N/A	SWITCH ASSEMBLY (REFER TO ILLUS. 9 FOR BREAKDOWN)	1
3	N/A	SILENCER ASSEMBLY (REFER TO ILLUS. 7 FOR BREAKDOWN)	1
4	ED34986	AIR CHANNEL PLATE, 3 MOTOR	1
5	ED32967	GASKET, MOTOR HEAD, LOWER, 3/16"THK	3
6	ED32934002	GASKET, .375IN X .75IN, 63IN LG	1
7	ED34826	MOTOR HOLD DOWN BRACKET, WS	6
8	ED34984	SILENCER FOAM, W2, LOWER	1
9	ED119514	MOTOR, 120V, 800 WATT	3
	ED33327	REPLACEMENT BRUSHES: BRUSH SET, ELECTRO MOTOR	3
	ED33326	BRUSH SET, AMETEK MOTOR	3
10	ED200432	NYLON WASHER/SPACER	6
11	ED20039	WASHER, SPLIT LOCK, M6 DIN 7980	6
12	ED27012	SCREW #8 X 1/2" PHIL PAN HEAD, ZINC	6
13	ED34998	GROUND CONNECTION, FOR BOLT	1
14	ED34854	BOLT, HEX, M6 X 25 ZINC	7
15	ED34817A	M6 BLIND PEM	9
16	ED348701	SCREW, BH SOC, FLANGED, M6 X 25	2
17	ED25000	WASHER, EXT. STAR 1/4"	2
18	ED34876	NUT, LOCK M6 ZINC	1

ILLUSTRATION 9: MOTOR SWITCH ASSEMBLY, 120V

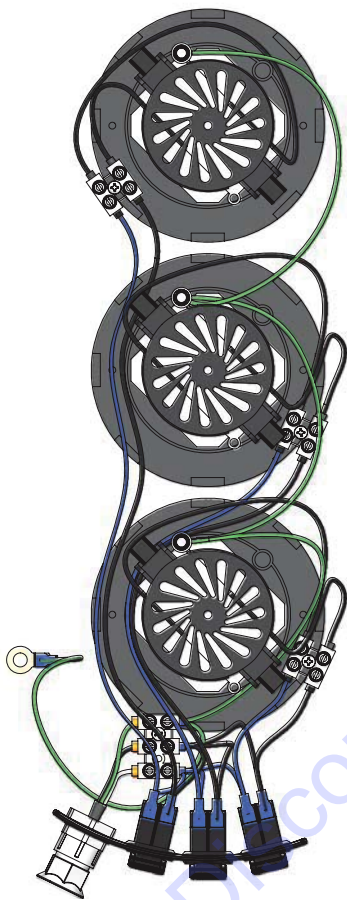
ITEM #	PART #	DESCRIPTION	QTY.
1	ED25064	SCREW PHIL PH #8 X 5/8" ZINC	4
2	ED349885	TERMINAL BLOCK, 8-18 WIRE RANGE	9
3	ED270179KIT-2320	WIRE ASSEMBLY KIT, WS 2320	1
4	ED32989	SCREW #10-16 X 5/8 HEX WASHER TEK	3
5	ED34987	SWITCH MOUNT	1
6	ED2005531	POWER CORD, 12/3 SJO W/MOLDED PLUG	1
7	ED34955	CABLE GRIP, PG16, WITH WIRE CLAMP	1
8	ED27017L	SWITCH, ROCKER, WS, CLEAR	3
9	ED34955-1	NUT, PG16	1
10	ED12270	INSULATED FERRULE, ORANGE, 4MM	3
11	ED21097	INSULATED FERRULE, GREY, 2.2MM ID, 14MM LG	6

WIRING SCHEMATIC

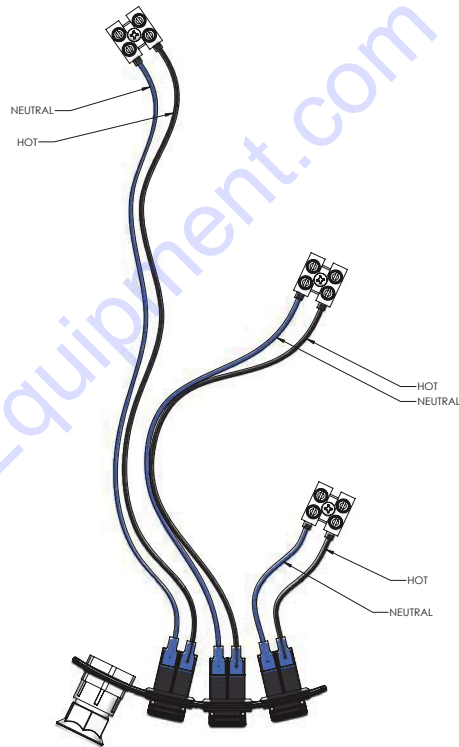
HOT- - - - -BLACK
NEUTRAL- - - - -WHITE/BLUE
GROUND- - - - -GREEN



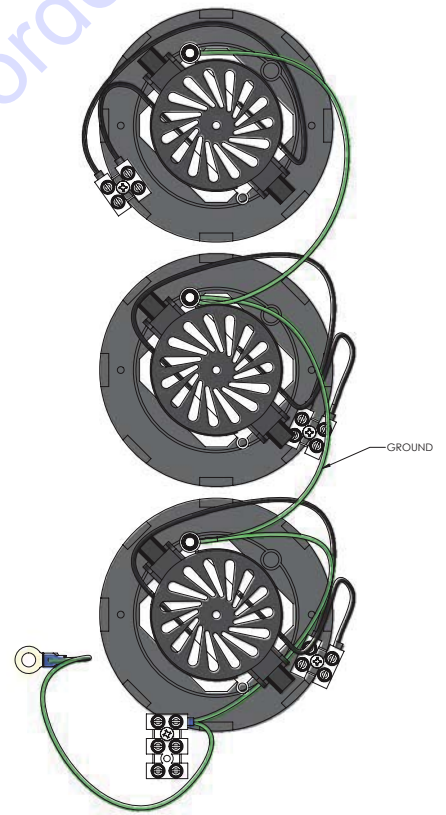
POWER TO SWITCHES



COMPLETED ASSEMBLY



SWITCHES TO TERMINAL BLOCKS



GROUND AND MOTOR

PARTS FINDER

**Search Website
by Part Number**



**Search Manual
Library For Parts
Manual & Lookup Part
Numbers – Purchase
or Request Quote**

Search Manuals

Enter your information to help us find the right parts manual for your machine.

* Brand:

* Model:

* Serial:

* Part Number:

SEARCH

**Can't Find Part or
Manual? Request Help
by Manufacturer,
Model & Description**

Parts Order Form

Please fill in the following information to help us find the right part for your machine.

Manufacturer:	<input type="text"/>
Model:	<input type="text"/>
Description:	<input type="text"/>
Part Number:	<input type="text"/>
Quantity:	<input type="text"/>
Notes:	<input type="text"/>

Submit

Discount-Equipment.com is your online resource for quality parts & equipment.

Florida: **561-964-4949** Outside Florida TOLL FREE: **877-690-3101**

Need parts?

Click on this link: <http://www.discount-equipment.com/category/5443-parts/> and choose one of the options to help get the right parts and equipment you are looking for. Please have the machine model and serial number available in order to help us get you the correct parts. If you don't find the part on the website or on one of the online manuals, please fill out the request form and one of our experienced staff members will get back to you with a quote for the right part that your machine needs.

We sell worldwide for the brands: Genie, Terex, JLG, MultiQuip, Mikasa, Essick, Whiteman, Mayco, Toro Stone, Diamond Products, Generac Magnum, Airman, Haulotte, Barreto, Power Blanket, Nifty Lift, Atlas Copco, Chicago Pneumatic, Allmand, Miller Curber, Skyjack, Lull, Skytrak, Tsurumi, Husquvarna Target, Stow, Wacker, Sakai, Mi-T-M, Sullair, Basic, Dynapac, MBW, Weber, Bartell, Bennar Newman, Haulotte, Ditch Runner, Menegotti, Morrison, Contec, Buddy, Crown, Edco, Wyco, Bomag, Laymor, EZ Trench, Bil-Jax, F.S. Curtis, Gehl Pavers, Heli, Honda, ICS/PowerGrit, IHI, Partner, Imer, Clipper, MMD, Koshin, Rice, CH&E, General Equipment, Amida, Coleman, NAC, Gradall, Square Shooter, Kent, Stanley, Tamco, Toku, Hatz, Kohler, Robin, Wisconsin, Northrock, Oztec, Toker TK, Rol-Air, APT, Wylie, Ingersoll Rand / Doosan, Innovatech, Con X, Ammann, Mecalac, Makinex, Smith Surface Prep, Small Line, Wanco, Yanmar