



PARTS LIST MANUAL

GASOLINE POWERED VACUUM



**Vortex
300**

MODEL VAC-300

PART NO. ED33725K



PARTS FINDER

**Search Website
by Part Number**



**Search Manual
Library For Parts
Manual & Lookup Part
Numbers – Purchase
or Request Quote**

Search Manuals

Enter your information to help us find the right parts manual for your machine.

* Brand:

* Model:

* Serial:

* Part Number:

SEARCH

**Can't Find Part or
Manual? Request Help
by Manufacturer,
Model & Description**

Parts Order Form

Please fill in the following information to help us find the right part for your machine.

MANUFACTURER:

MODEL:

DESCRIPTION:

DATE:

NAME:

PHONE:

EMAIL:

ADDRESS:

CITY:

STATE:

ZIP:

SEARCH

Discount-Equipment.com is your online resource for quality parts & equipment.

Florida: **561-964-4949** Outside Florida TOLL FREE: **877-690-3101**

Need parts?

Click on this link: <http://www.discount-equipment.com/category/5443-parts/> and choose one of the options to help get the right parts and equipment you are looking for. Please have the machine model and serial number available in order to help us get you the correct parts. If you don't find the part on the website or on one of the online manuals, please fill out the request form and one of our experienced staff members will get back to you with a quote for the right part that your machine needs.

We sell worldwide for the brands: Genie, Terex, JLG, MultiQuip, Mikasa, Essick, Whiteman, Mayco, Toro Stone, Diamond Products, Generac Magnum, Airman, Haulotte, Barreto, Power Blanket, Nifty Lift, Atlas Copco, Chicago Pneumatic, Allmand, Miller Curber, Skyjack, Lull, Skytrak, Tsurumi, Husquvarna Target, Stow, Wacker, Sakai, Mi-T-M, Sullair, Basic, Dynapac, MBW, Weber, Bartell, Bennar Newman, Haulotte, Ditch Runner, Menegotti, Morrison, Contec, Buddy, Crown, Edco, Wyco, Bomag, Laymor, EZ Trench, Bil-Jax, F.S. Curtis, Gehl Pavers, Heli, Honda, ICS/PowerGrit, IHI, Partner, Imer, Clipper, MMD, Koshin, Rice, CH&E, General Equipment, Amida, Coleman, NAC, Gradall, Square Shooter, Kent, Stanley, Tamco, Toku, Hatz, Kohler, Robin, Wisconsin, Northrock, Oztec, Toker TK, Rol-Air, APT, Wylie, Ingersoll Rand / Doosan, Innovatech, Con X, Ammann, Mecalac, Makinex, Smith Surface Prep, Small Line, Wanco, Yanmar

READ AND UNDERSTAND THE OPERATORS INSTRUCTION MANUAL THOROUGHLY BEFORE ATTEMPTING TO OPERATE THIS EQUIPMENT.



Death or serious injury could occur if this machine is used improperly.



SAFETY MESSAGES

- Safety Instructions are preceded by a graphic alert symbol of DANGER, WARNING, or CAUTION.



Indicates an imminent hazard which, if not avoided, will result in death or serious injury.



Indicates an imminent hazard which, if not avoided, can result in death or serious injury.



Indicates hazards which, if not avoided, could result in serious injury and or damage to the equipment.

GASOLINE/PROPANE POWERED EQUIPMENT



- Engine exhaust from this product contains chemicals known to the State of California to cause cancer, birth defects or other reproductive harm.



Gasoline is extremely flammable and poisonous. It should only be dispensed in well ventilated areas, and with a cool engine.

- Small gasoline engines produce high concentrations of carbon monoxide (CO) example: a 5 HP 4 cycle engine operation in an enclosed 100,000 cu. ft. area with only one change of air per hour is capable of providing deadly concentrations of CO in less than fifteen minutes. Five changes of air in the same area will produce noxious fumes in less than 30 minutes. Gasoline or propane powered equipment should not be used in enclosed or partially enclosed areas. Symptoms of CO poisoning include, headache, nausea, weakness, dizziness, visual problems and loss of consciousness. If symptoms occur - get into fresh air and seek medical attention immediately.

ELECTRICAL POWERED EQUIPMENT



Extreme care must be taken when operating electric models with water present: Ensure power cord is properly grounded, is attached to a Ground-Fault-Interrupter (GFI) outlet, and is undamaged.

- Check all electrical cables - be sure connections are tight and cable is continuous and in good condition. Be sure cable is correctly rated for both the operating current and voltage of this equipment.
- Improper connection of the equipment-grounding conductor can result in a risk of electric shock. Check with qualified electrician or service person if there is any doubt as to whether the outlet is properly grounded. Adhere to all local codes and ordinances.
- **NOTE:** In the event of a malfunction or breakdown, grounding provides a path of least resistance for the electric current to dissipate. The motor is equipped with a grounded plug and must be connected to an outlet that is properly installed and properly grounded. DO NOT modify the plug provided on the motor. If the plug does not fit the outlet have a qualified electrician install the proper receptacle.
- Switch motor OFF **before** disconnecting power.

- Do not disconnect power by pulling cord. To disconnect, grasp the plug, not the cord.
- Unplug power cord at the machine when not in use and before servicing.

GENERAL INSTRUCTIONS

- Equipment should only be operated by trained personnel in good physical condition and mental health (not fatigued). The operator and maintenance personnel must be physically able to handle the bulk weight and power of this equipment.
- This is a one person tool. Maintain a safe operating distance to other personnel. It is the **operators' responsibility** to keep other people (workers, pedestrians, bystanders, etc.) away during operation. Block off the work area in all directions with roping, safety netting, etc. for a safe distance. Failure to do so may result in others being injured by flying debris or exposing them to harmful dust and noise.
- This equipment is intended for commercial use only.
- For the operator's safety and the safety of others, always keep all guards in place during operation.
- Never let equipment run unattended.



- Personal Protection Equipment and proper safety attire must be worn when operating this machinery. The operator must wear approved safety equipment appropriate for the job such as hard hat and safety shoes when conditions require. Hearing protection **MUST** be used (operational noise levels of this equipment may exceed 85db). Eye protection **MUST** be worn at all times.



Keep body parts and loose clothing away from moving parts. Failure to do so could result in dismemberment or death.

- Do not modify the machine.
 - Stop motor/engine when adjusting or servicing this equipment.
- Maintain a safe operating distance from flammable materials. Sparks from the cutting-action of this machine can ignite flammable materials or vapors.



DUST WARNING



Some dust created by power sanding, sawing, grinding, drilling, and other construction activities contains chemicals known to cause cancer, birth defects, or other reproductive harm. Some examples of these chemicals are:

- Lead from lead-based paints, and
 - Crystalline silica from bricks and concrete and other masonry products.
- Your risk of exposure to these chemicals varies depending on how often you do this type of work. To reduce your risk: work in a well ventilated area, use a dust control system, such as an industrial-style vacuum, and wear approved personal safety equipment, such as a dust/particle respirator designed to filter out microscopic particles.

PARTS LIST MANUAL

Vortex 300

GASOLINE POWERED VACUUM

TABLE OF CONTENTS

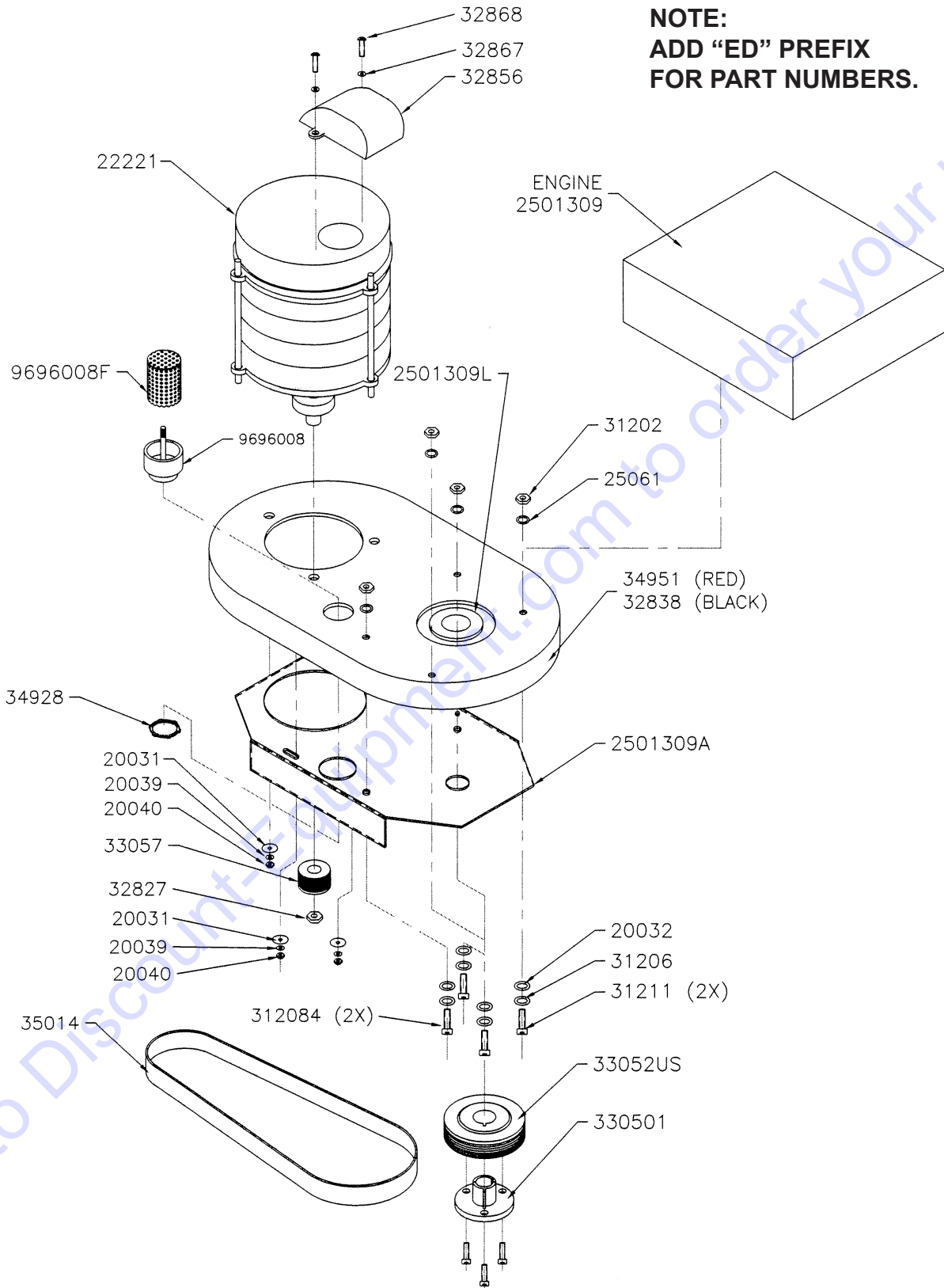
<u>Section</u>	<u>Page Number</u>
Safety Messages and General Instructions	2
How To Order Replacement Parts	3
Illustration 1: Engine Deck Assembly	4, 5
Illustration 2: Filter Assembly for 1.2m Filter (Black)	6, 7
Illustration 3: Filter Assembly for 2.6m Filter (Black)	8, 9
Illustration 4: Caster Frame Assembly	10, 11
Illustration 5: Caster Frame Assembly Details	12, 13
Illustration 6: 70mm Inlet Assembly	14
Accessories	15
Limited Equipment Warranty of Sale - Terms & Conditions	16 (Back Page)

Go to Discount-Equipment.com to order your parts



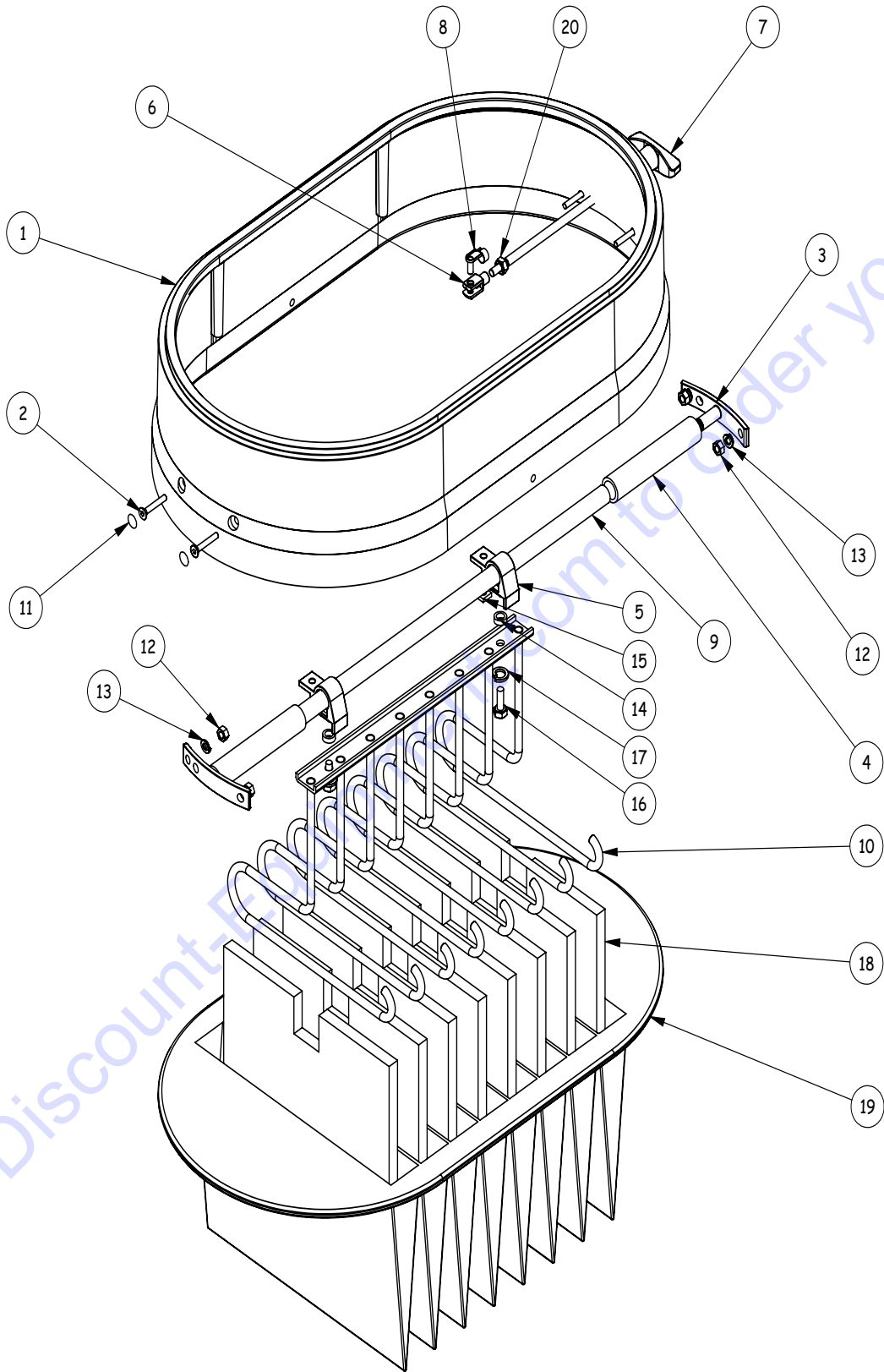
ILLUSTRATION 1: ENGINE DECK ASSEMBLY

NOTE:
ADD "ED" PREFIX
FOR PART NUMBERS.



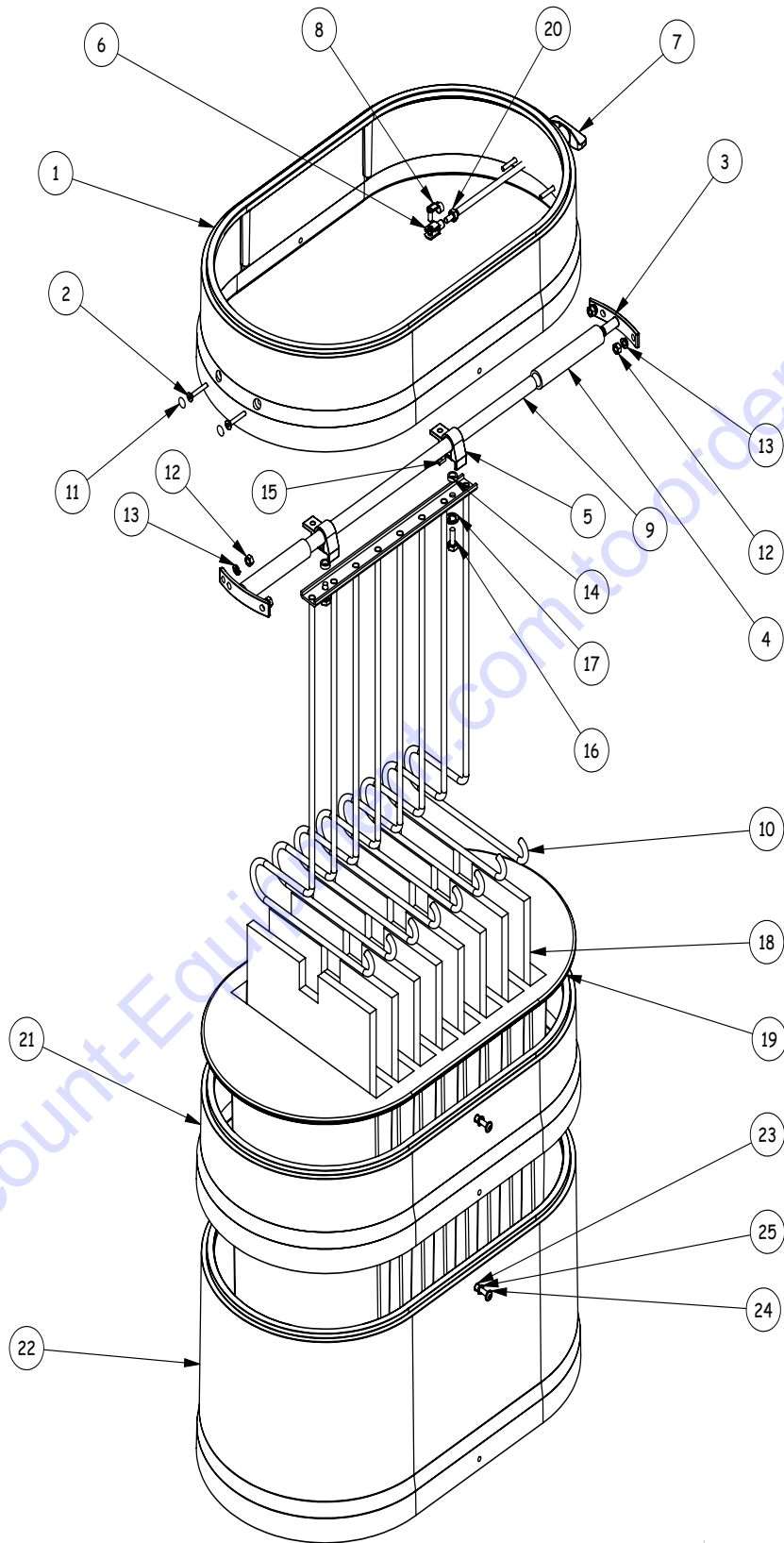
PARTS LISTING - ILLUSTRATION 1: ENGINE DECK ASSEMBLY		
PART #	DESCRIPTION	QTY.
ED20031	FENDER WASHER, ZINC	3
ED20032	FENDER WASHER 5/16 X 1-1/2	4
ED20039	M6 SPLIT LOCK WASHER, ZINC	3
ED20040	M6-8 HEX NUT, ZINC	3
ED22221	TURBINE, 4.0 KW	1
ED2501309	10 HP ENGINE, HONDA GX340	1
ED2501309A	MOTOR DECK SUPPORT PLATE	1
ED2501309L	SPACER, PVC, 6V MOTOR DECK	1
ED25061	M8 FLAT WASHER, ZINC	4
ED31202	5/16-18 NYL. LOCK NUT	4
ED31206	5/16 SPLIT LOCK WASHER	4
ED312084	5/16-24 X 1-1/4 HEX CAP BOLT	2
ED31211	5/16-18 X 2 HEX CAP BOLT	2
ED32827	LEFT HAND NUT FOR TURBINE	1
ED32838	MOTOR/TURBINE DECK (BLACK)	1
ED32856	EXHAUST DEFLECTOR, TURBINE	1
ED32867	M5 EXT TOOTH LOCK WASHER ZINC	2
ED32868	M5 X 16 SOCKET HEAD CAP SCREW	2
ED330501	BUSHING, PIXI	1
ED33052US	SHEAVE, 125MM, 10 GROOVE POLY V	1
ED33057	PULLEY, POLY V, 10 GROOVE 48MM	1
ED34951	MOTOR/TURBINE DECK (RED)	1
ED34928	1-1/2" LOCKNUT	1
ED35014	330J, 10 GROOVE POLY V BELT	1
ED9696008	1-1/2" RELIEF VALVE, ADJ. NEGATIVE PRESSURE	1
ED9696008F	RELIEF VALVE COVER, SS	1

ILLUSTRATION 2: FILTER ASSEMBLY FOR 1.2m FILTER (BLACK)



PARTS LISTING - ILLUSTRATION 2: FILTER ASSEMBLY FOR 1.2m FILTER (BLACK)			
ITEM #	PART #	DESCRIPTION	QTY.
1	ED32834	HOUSING SPACER, SMALL, BLACK	1
2	ED34815	M6 X 30 SOCKET CAP SCREW	4
3	ED34806	SHAKER ROD MOUNTING SUPPORT	2
4	ED34805	CLEAR HOSE, 3/4"ID	2
5	ED34802	FILTER SLIDE ASSEMBLY, W/HOOK	2
6	ED25047	STEEL YOKE END, FILTER SHAKER	1
7	ED22565	SHAKER BAR WITH SWIVEL HANDLE	1
8	ED34879	SPRING CLIP, 6X12	1
9	ED34804	SLIDE BAR	1
10	ED25056	FILTER SHAKER INSERT (CAGE), 1.2M	1
11	ED34871	PLASTIC PLUG 4.5/13	4
12	ED20040	M6 HEX NUT, ZINC	4
13	ED20039	M6 SPLIT LOCK WASHER, ZINC	4
14	ED200656	SPACER, FILTER CAGE	2
15	ED20045	SQUARE NUT, 8MM, ZINC	2
16	ED25038	M8 HEX CAP-1.25X20 ZINC	2
17	ED20050	M8 SPLIT LOCK WASHER, ZINC	2
18	ED20091F	FILTER INSERT, 1.2M	8
19	ED20091	FILTER, 13 SQ/FT, 1.2M	1
20	ED20044	M8 HEX NUT-8 ZINC	1

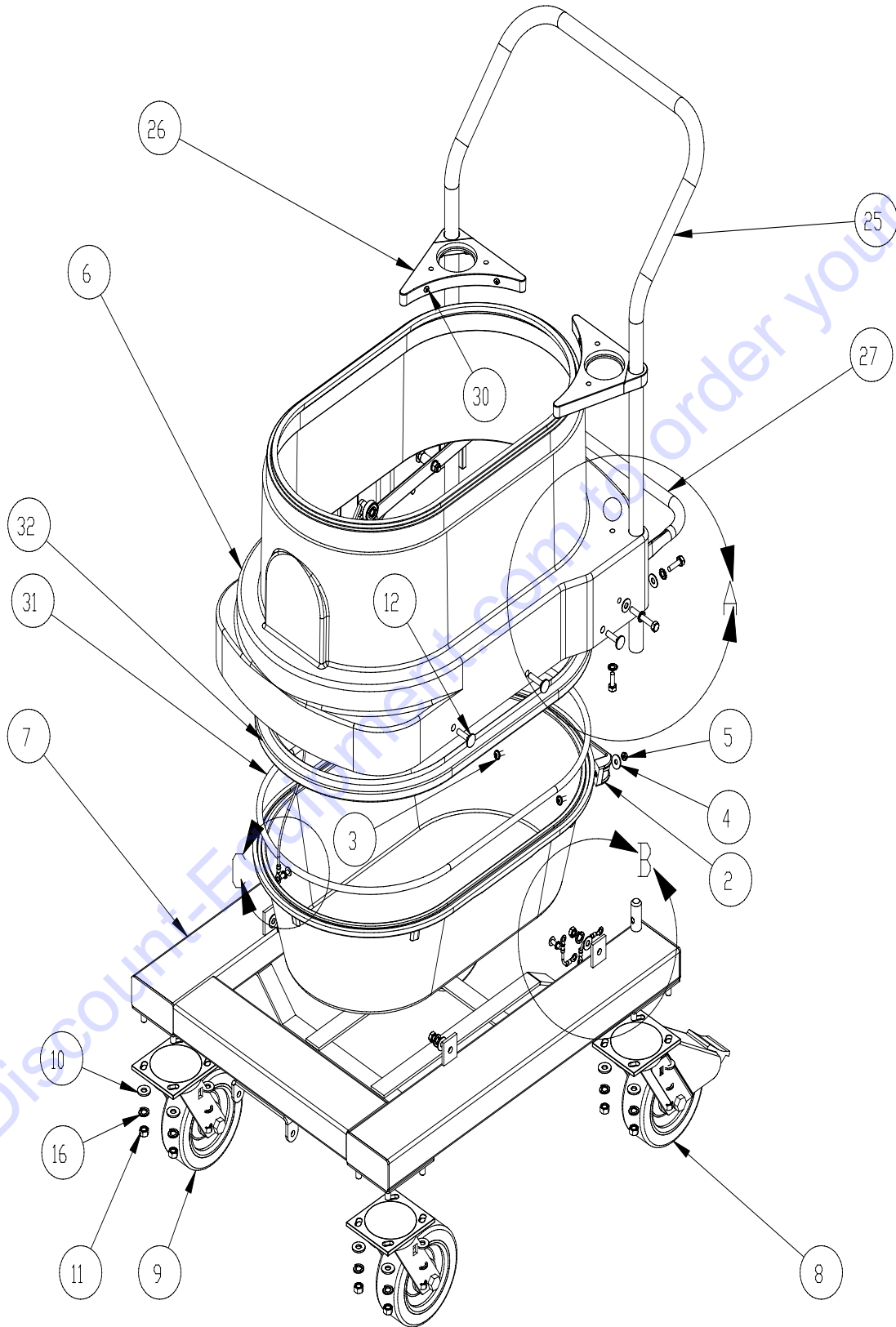
ILLUSTRATION 3: FILTER ASSEMBLY FOR 2.6m FILTER (BLACK)



PARTS LISTING - ILLUSTRATION 3: FILTER ASSEMBLY FOR 2.6m FILTER (BLACK)

ITEM #	PART #	DESCRIPTION	QTY.
1	ED32834	HOUSING SPACER, SMALL, BLACK	1
2	ED34815	M6 X 30 SOCKET CAP SCREW	4
3	ED34806	SHAKER ROD MOUNTING SUPPORT	2
4	ED34805	CLEAR HOSE, 3/4"ID	2
5	ED34802	FILTER SLIDE ASSEMBLY, W/HOOK	2
6	ED25047	STEEL YOKE END, FILTER SHAKER	1
7	ED22565	SHAKER BAR WITH SWIVEL HANDLE	1
8	ED34879	SPRING CLIP, 6X12	1
9	ED34804	SLIDE BAR	1
10	ED34807	FILTER SHAKER INSERT, 2.6M	1
11	ED34871	PLASTIC PLUG 4.5/13	4
12	ED20040	M6 HEX NUT, ZINC	4
13	ED20039	M6 SPLIT LOCK WASHER, ZINC	4
14	ED200656	SPACER, FILTER CAGE	2
15	ED20045	SQUARE NUT, 8MM, ZINC	2
16	ED25038	M8 HEX CAP-1.25X20 ZINC	2
17	ED20050	M8 SPLIT LOCK WASHER, ZINC	2
18	ED30091F	FILTER INSERT, 2.6M	8
19	ED30091	FILTER, 28 SQ/FT, 2.6M	1
20	ED20044	M8 HEX NUT-8 ZINC	1
21	ED32834	HOUSING SPACER, SMALL, BLACK	1
22	ED32835	HOUSING SPACER, LARGE, BLACK	1
23	ED34817A	M6 BLIND PEM	4
24	ED3481701	M6X25 ALLEN HEAD SCREW	4
25	ED25000	1/4" EXTERNAL STAR WASHER	4

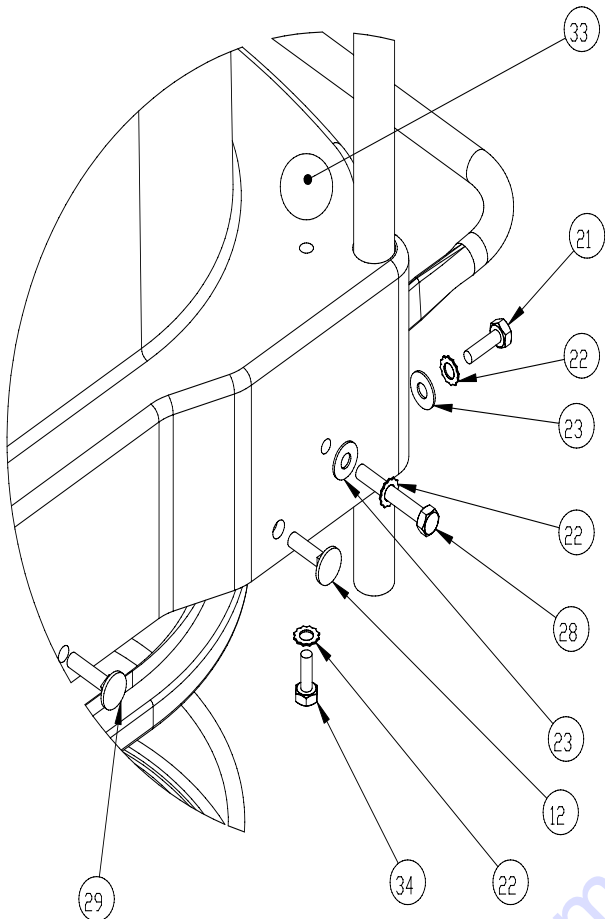
ILLUSTRATION 4: CASTER FRAME ASSEMBLY



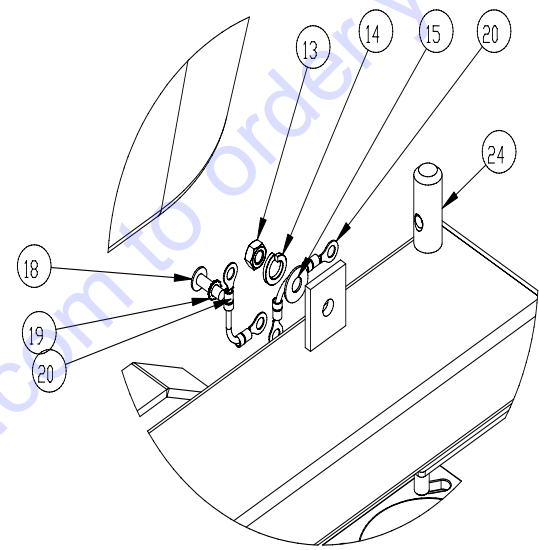
PARTS LISTING - ILLUSTRATION 4: CASTER FRAME ASSEMBLY			
ITEM #	PART #	DESCRIPTION	QTY.
1	ED32837	DUST PAN, 35 LITER, BLACK	1
2	ED21658-28	HANDLE, BLACK	1
3	ED21464	M6 X 30 ALLEN HEAD SCREW	2
4	ED34819	M6 FENDER WASHER	2
5	ED34876	M6 LOCK NUT, ZINC	2
6	ED32836	LOWER HOUSING , BLACK	1
7	ED302120A	CASTER FRAME, SERIES 1	1
8	ED30211	CASTER, RIGID W/ BRAKE 6"	2
9	ED30210	CASTER, SWIVEL 6"	2
10	ED31205	FLAT WASHER, 5/16", ZINC	16
11	ED37502	HEX NUT, 3/8"	16
12	ED25030	CARRIAGE BOLT, M8 X 30	4
25	ED25080	PUSH HANDLE	1
26	ED32039	HANDLE SUPPORT, PLASTIC	2
27	ED20010A	DUST PAN LEVER ASSY., DS1	1
30	ED32988	#8 X 1 PHIL TRUSS HEAD, ZINC	4
31	ED2509865	DUST PAN REPLACEMENT GASKET 10MM DIA. X 68.5"L	1
32	ED20070	GASKET, DUST PAN/LOWER HOUSING 20 X 15 MM	1

NOTE: REFER TO ILLUSTRATION 5 FOR DETAILS A, B, & C.

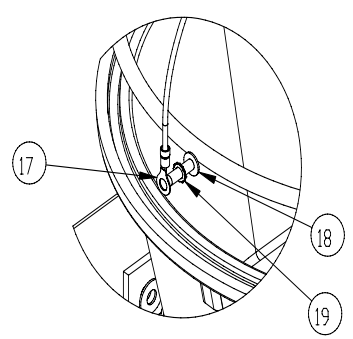
ILLUSTRATION 5: CASTER FRAME ASSEMBLY DETAILS



DETAIL "A"



DETAIL "B"



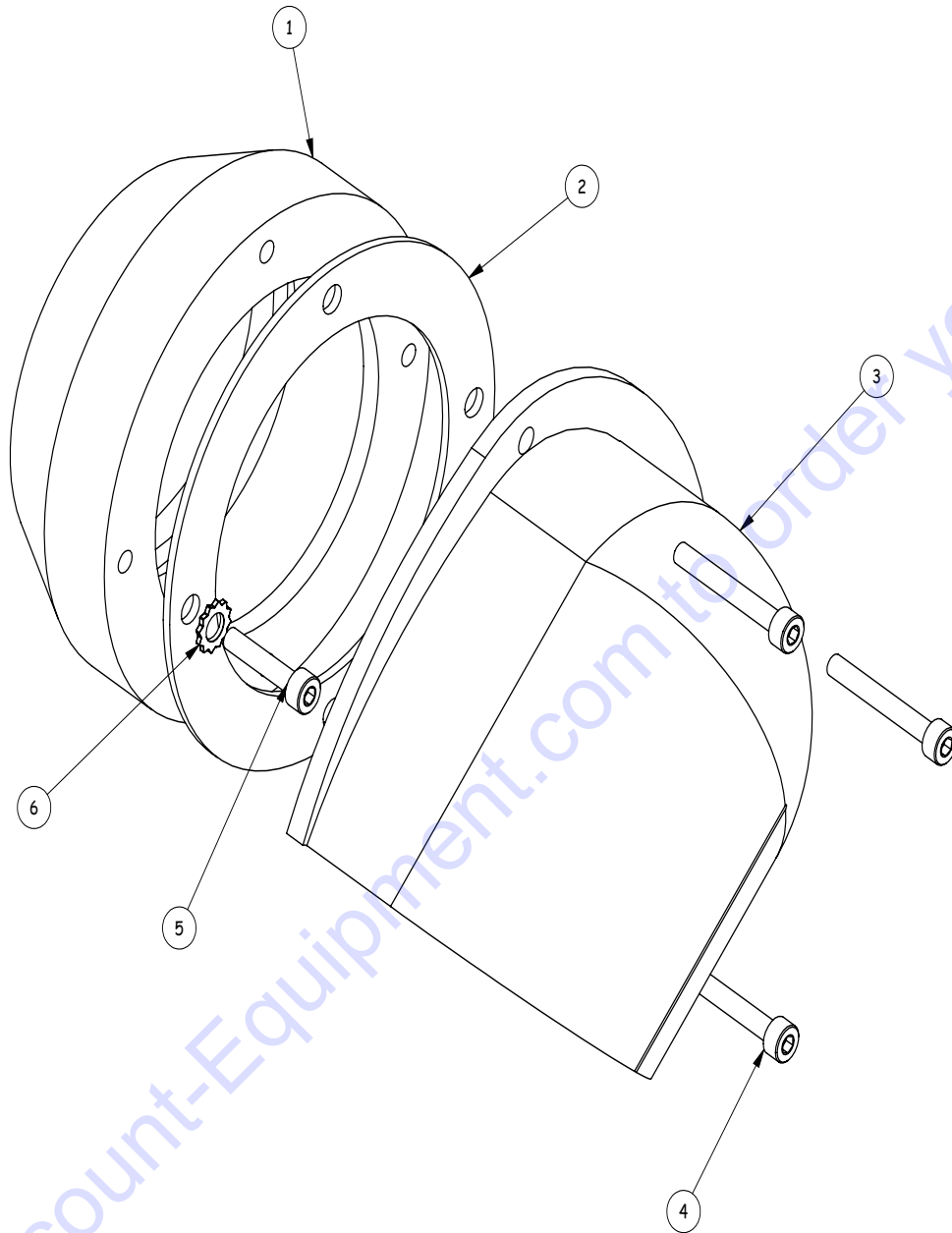
DETAIL "C"

Go to Discount-Equipment.com to order your parts

PARTS LISTING - ILLUSTRATION 5: CASTER FRAME ASSEMBLY DETAILS

ITEM #	PART #	DESCRIPTION	QTY.
12	ED25030	CARRIAGE BOLT, M8 X 30	4
13	ED20044	M8 HEX NUT-8 ZINC	4
14	ED20050	M8 SPLIT LOCK WASHER, ZINC	4
15	ED25061	M8 FLAT WASHER, ZINC	4
16	ED37501	SPLIT LOCK WASHER, 3/8"	16
17	ED34859	CASTER FRAME GROUND TO INLET, FOR EX MACHINES	1
18	ED34817	M6 X 20 ALLEN HEAD SCREW	2
19	ED25000	1/4" EXTERNAL STAR WASHER	2
20	ED34860	GROUND WIRE, FOOTLEVER-HANDLE BAR/ FOOTLEVER-FRAME	2
21	ED25054	M8 X 25 HEX BOLT, ZINC	2
22	ED25037	M8 WASHER	5
23	ED34882	M8 FLAT WASHER, 8.4 X 20 X 1.3	4
24	ED31805	M1 X 40 REINFORCEMENT CASTER PEG	2
25	ED25080	PUSH HANDLE	1
29	ED25053	M8 X 35 CARRIAGE SCREW	2
33	ED25060	KNOB, BLACK, 8MM	1
34	ED25038	SCREW, CAP M8-1.25P X 20MM ZINC	1

ILLUSTRATION 6: 70mm INLET ASSEMBLY



ITEM #	PART #	DESCRIPTION	QTY.
1	ED30007	INLET, 70MM, ALUMINUM	1
2	ED24821	GASKET, 70MM INLET	1
3	ED32958	DEFLECTOR, 70MM., ALU.	1
4	ED32866	M5-.8X30 SOCKET CAP, ALLEN HEAD	3
5	ED32863	M5-.8X20 SOCKET CAP SCREW	1
6	ED32867	M5 EXT TOOTH LOCK WASHER ZINC	1

ACCESSORIES

PART #	DESCRIPTION	QTY.
* ED701225	HOSE W/ CUFFS 3" X 25', CRUSH-PROOF PLASTIC	1
* ED7018-BL	HOSE CONNECTOR 3"BL(BUTTON-LOCK) TO 3" HOSE	1
* ED30009-BL	ADAPTER, 3" INLET TO 2" INLET	1
* ED5004	WAND, 56" CHROME STEEL, DOUBLE BEND	1
* ED-3512N	FLOOR TOOL W/ NYLON BRISTLES 1.5" X 14"	1
** ED5003K	PRO WAND KIT (OPTIONAL) INCLUDES:	1
ED5003	WAND, 45" CHROME STEEL. SINGLE BEND	1
ED5060	FLOOR TOOL, 20". W/ ROLLERS	1
** ED5060A	REPLACEMENT PARTS FOR ED5060 FLOOR TOOL: RUBBER STRIP FOR FLOOR TOOL	1
ED5060B	SETTING SCREW	2
ED5060C	SPRING FOR FLOOR TOOL WHEEL	2
ED5060E	WHEEL, PLASTIC, FOR FLR TOOL RUWAC	2
ED5060F	AXLE FOR FLOOR TOOL WHEEL	2
ED5060H	WASHER, PLASTIC, 20/6 X 1.5	2
ED5060I	C-CLIP FOR FLOOR TOLL WHEEL	2
ED5060W	WHEEL COMPLETE FOR RUWAC FLOOR TOOL (INCLUDES ED5060E, ED5060F, & ED5060I)	2
* INCLUDED WITH VAC-300 ** OPTIONAL ACCESSORIES		

PARTS FINDER

**Search Website
by Part Number**



**Search Manual
Library For Parts
Manual & Lookup Part
Numbers – Purchase
or Request Quote**

Search Manuals

Enter your information to help us find the right parts manual for your machine.

* Brand:

* Model:

* Serial:

* Part Number:

SEARCH

**Can't Find Part or
Manual? Request Help
by Manufacturer,
Model & Description**

Parts Order Form

Please fill in the following information to help us find the right part for your machine.

Manufacturer:	<input type="text"/>
Model:	<input type="text"/>
Description:	<input type="text"/>
Part Number:	<input type="text"/>
Quantity:	<input type="text"/>
Notes:	<input type="text"/>

Discount-Equipment.com is your online resource for quality parts & equipment.

Florida: **561-964-4949** Outside Florida TOLL FREE: **877-690-3101**

Need parts?

Click on this link: <http://www.discount-equipment.com/category/5443-parts/> and choose one of the options to help get the right parts and equipment you are looking for. Please have the machine model and serial number available in order to help us get you the correct parts. If you don't find the part on the website or on one of the online manuals, please fill out the request form and one of our experienced staff members will get back to you with a quote for the right part that your machine needs.

We sell worldwide for the brands: Genie, Terex, JLG, MultiQuip, Mikasa, Essick, Whiteman, Mayco, Toro Stone, Diamond Products, Generac Magnum, Airman, Haulotte, Barreto, Power Blanket, Nifty Lift, Atlas Copco, Chicago Pneumatic, Allmand, Miller Curber, Skyjack, Lull, Skytrak, Tsurumi, Husquvarna Target, Stow, Wacker, Sakai, Mi-T-M, Sullair, Basic, Dynapac, MBW, Weber, Bartell, Bennar Newman, Haulotte, Ditch Runner, Menegotti, Morrison, Contec, Buddy, Crown, Edco, Wyco, Bomag, Laymor, EZ Trench, Bil-Jax, F.S. Curtis, Gehl Pavers, Heli, Honda, ICS/PowerGrit, IHI, Partner, Imer, Clipper, MMD, Koshin, Rice, CH&E, General Equipment, Amida, Coleman, NAC, Gradall, Square Shooter, Kent, Stanley, Tamco, Toku, Hatz, Kohler, Robin, Wisconsin, Northrock, Oztec, Toker TK, Rol-Air, APT, Wylie, Ingersoll Rand / Doosan, Innovatech, Con X, Ammann, Mecalac, Makinex, Smith Surface Prep, Small Line, Wanco, Yanmar