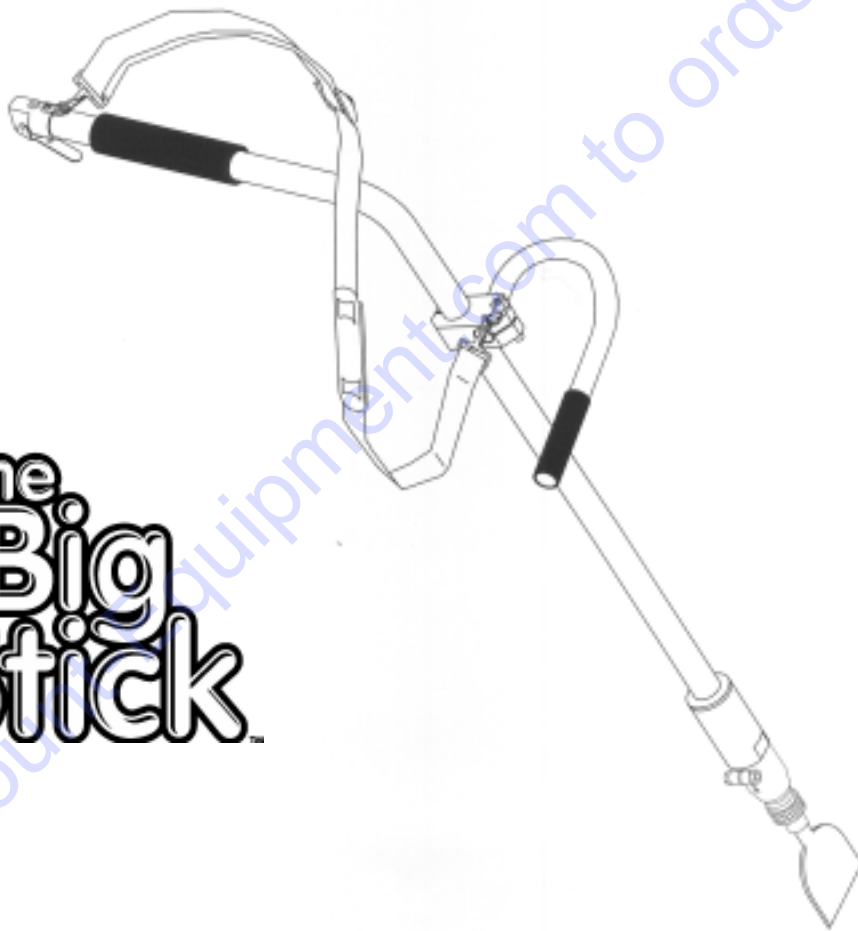


Revised Starting Serial # 26400



INSTRUCTIONS AND PARTS LIST MANUAL

Model ALR-BS



The  
Big  
Stick<sup>™</sup>

Chisel Scaler



# PARTS FINDER

**Search Website  
by Part Number**



**Search Manual  
Library For Parts  
Manual & Lookup Part  
Numbers – Purchase  
or Request Quote**

**Search Manuals**

Enter your information to help us find the right parts manual for your machine.

\* Brand:

\* Model:

\* Serial:

\* Part Number:

SEARCH

**Can't Find Part or  
Manual? Request Help  
by Manufacturer,  
Model & Description**

**Parts Order Form**

Please fill in the following information to help us find the right part for your machine.

Manufacturer:	<input type="text"/>
Model:	<input type="text"/>
Description:	<input type="text"/>
Part Number:	<input type="text"/>
Quantity:	<input type="text"/>
Notes:	<input type="text"/>

Submit

Discount-Equipment.com is your online resource for quality parts & equipment.

Florida: **561-964-4949** Outside Florida TOLL FREE: **877-690-3101**

**Need parts?**

Click on this link: <http://www.discount-equipment.com/category/5443-parts/> and choose one of the options to help get the right parts and equipment you are looking for. Please have the machine model and serial number available in order to help us get you the correct parts. If you don't find the part on the website or on one of the online manuals, please fill out the request form and one of our experienced staff members will get back to you with a quote for the right part that your machine needs.

We sell worldwide for the brands: Genie, Terex, JLG, MultiQuip, Mikasa, Essick, Whiteman, Mayco, Toro Stone, Diamond Products, Generac Magnum, Airman, Haulotte, Barreto, Power Blanket, Nifty Lift, Atlas Copco, Chicago Pneumatic, Allmand, Miller Curber, Skyjack, Lull, Skytrak, Tsurumi, Husquvarna Target, Stow, Wacker, Sakai, Mi-T-M, Sullair, Basic, Dynapac, MBW, Weber, Bartell, Bennar Newman, Haulotte, Ditch Runner, Menegotti, Morrison, Contec, Buddy, Crown, Edco, Wyco, Bomag, Laymor, EZ Trench, Bil-Jax, F.S. Curtis, Gehl Pavers, Heli, Honda, ICS/PowerGrit, IHI, Partner, Imer, Clipper, MMD, Koshin, Rice, CH&E, General Equipment, Amida, Coleman, NAC, Gradall, Square Shooter, Kent, Stanley, Tamco, Toku, Hatz, Kohler, Robin, Wisconsin, Northrock, Oztec, Toker TK, Rol-Air, APT, Wylie, Ingersoll Rand / Doosan, Innovatech, Con X, Ammann, Mecalac, Makinex, Smith Surface Prep, Small Line, Wanco, Yanmar

# EDCO AIR-RAM LONG REACH CHISEL SCALER - MODEL ALR-BS









## OPERATORS INSTRUCTIONS



READ AND UNDERSTAND THE OPERATORS INSTRUCTION MANUAL THOROUGHLY BEFORE ATTEMPTING TO OPERATE THIS EQUIPMENT. Death or serious injury could occur if this machine is used improperly.



- 1 When operating this equipment, the operator must wear approved job related safety attire. Eye and hearing protection must be worn at all times while equipment is in use as sound levels exceed 92 dBA. Steel toe safety shoes should be worn. Head protection is required if work is performed overhead. Wear proper dust mask based on material being removed.
 









- 2 Use the correct size air hose for the tool, 1/2" diameter (minimum). Hose and fittings must be rated for safe handling in excess of 100 PSI pressure. The working pressure of this tool is 80-90 PSI and should never be allowed to exceed 100 PSI.
- 3 Limit the hose length to 30 feet (10 meters) maximum. Note: The pressure drop of 1/2" diameter hose is approximately 1 PSI per 90 linear feet.
- 4 A filter/water separator must be provided on the air source to afford an adequate supply of clean, dry air to this tool. A lubricator should also be used. If a lubricator is unavailable, lubricate the tool daily by putting 6 to 7 drops of lightweight machine oil in the hose connector opening prior to connecting the air supply. In cold weather, use graphite oil for lubrication.
- 5 **WARNING** Disconnect the air supply before removing or installing a chisel or accessory. Squeeze the hand lever to release all compressed air from the tool. Use only genuine EDCO chisels and accessories with this equipment. Failure to do so may result in serious bodily injury or death.
- 6 To install or remove chisel: Disconnect the air supply. Squeeze the hand lever to release all compressed air. Pull back on the spring loaded locking collar and hold while removing the chisel. Hold back on the spring loaded locking collar while firmly seating the new chisel in the holder. Release collar to retain the chisel.
- 7 The appropriate accessory must be used for the job at hand. **DO NOT** force the tool into the work. The hammering action of the tool will perform the work for you. **NEVER USE THE TOOL AS A PRY BAR.** Damage to the equipment will result. If the tool does not seem to perform the work to your specifications, try another accessory or Contact Discount-equipment
- 8 To activate tool, attach the air source, firmly grip the tool then squeeze the hand lever on the air valve.
- 9 **CAUTION** After releasing the air valve hand lever, the tool will continue to operate for up to 15 seconds. This is a normal result of stored pressure in the tool casing being released gradually. **Be sure to firmly grip the tool until ALL air leaves the chamber.**
- 10 Remove the air source from the tool when not in use.
- 11 **WARNING** This equipment will create dust from the material being removed. That dust may contain a chemical known to the state of California to cause cancer and/or birth defects or other reproductive harm. As an example, paints and concrete contain chemicals known to the state of California to cause cancer and/or birth defects or other reproductive harm. Check the chemical properties of the materials to be removed.
- 12 **CAUTION** It is the operator's responsibility to keep other people (workers, pedestrians, bystanders, etc.) away during operation. Block off the work area in all directions with roping, safety netting, etc. for a safe distance. Failure to do so may result in others being injured by flying debris or exposing them to harmful dust and noise.



## ALR-BS Chisel Scaler Maintenance Instructions

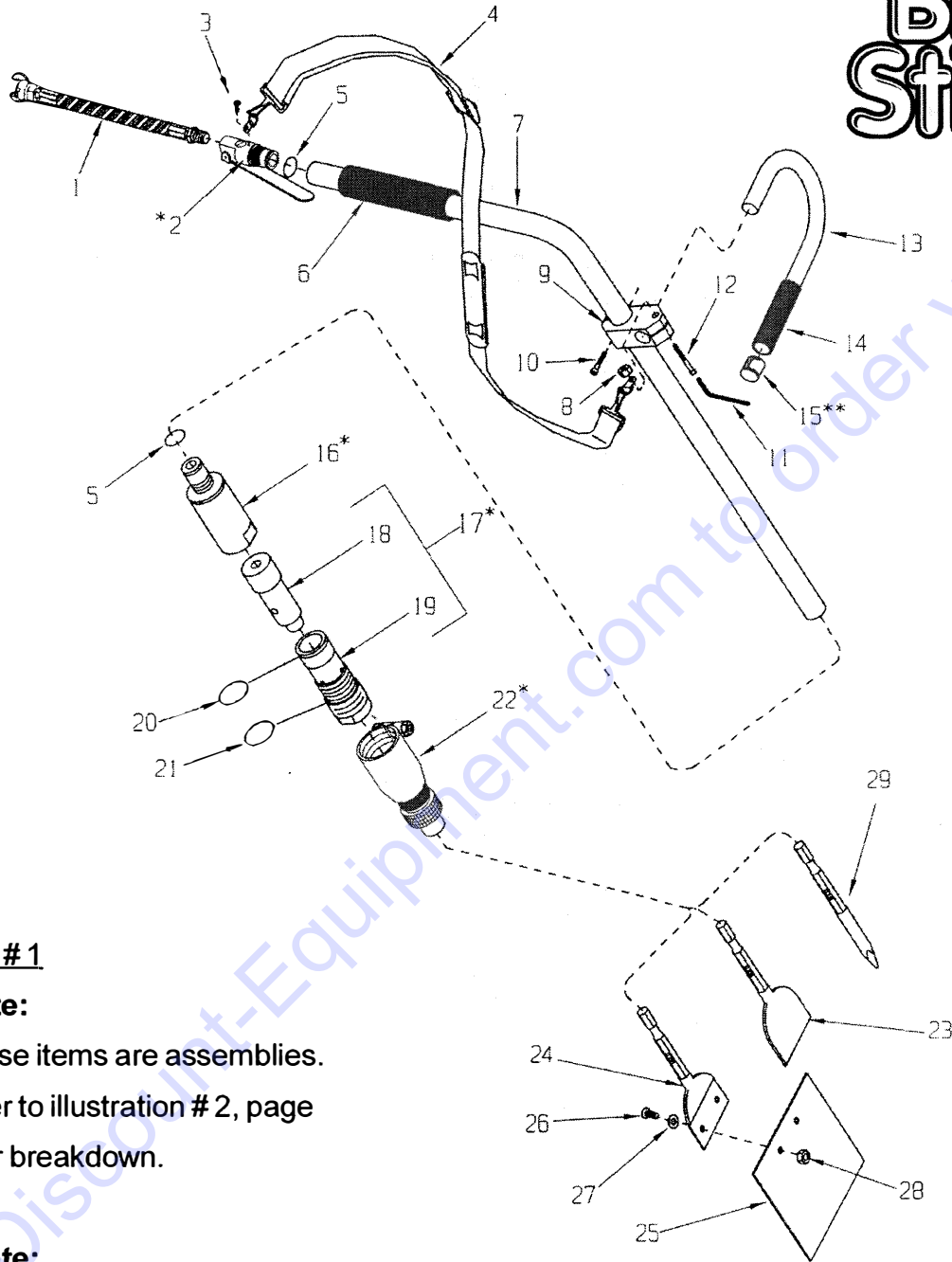


1. Remove air source and chisel accessory from tool before performing any maintenance.
2. Clean tool daily and keep it clean and lubricated. If a lubricator is provided with the air source, it should be adequate. If you are unsure or no lubricator is provided, lubricate the tool daily before use by putting 6 to 7 drops of lightweight machine oil in the hose connector opening. If tool is operated in cold weather (near or below freezing), use a graphite oil instead of the lightweight machine oil as described above.
3. After every 100 hours of use, flush the tool thoroughly with an environmentally safe, nonflammable and non-caustic solvent to clean out any oil/residue buildup in the tool. Oil tool immediately after flushing.
4. Replace any damaged parts immediately. Use only genuine EDCO parts.

### SPECIFICATIONS

Weight.....	22lb. (9.8kg)w/o chisel
Length.....	65.5 in. Assembled
Blows per minute.....	3500 (approximate)
Stroke.....	1.595 in (40.5mm)
Bore.....	1.902 in (48.3mm)
Air Flow Rate.....	12-15 CFM @ 90 PSI
Working Pressure.....	80-90 PSI (5.5-6.2 BAR) 100 PSI max.
Noise Level During Operation.....	Exceeds 92 dB (A) Hearing Protection Must Be Worn!
CAUTION.....	Approximately 15 seconds pressure is stored in the case after air valve is released.
NOTE.....	Specifications are subject to change at any time.

# The Big Stick



## Illustration # 1

### **\*Note:**

These items are assemblies.  
Refer to illustration # 2, page  
6, for breakdown.

### **\*\*Note:**

Foam Grip (#14) overlaps cap  
plug (#15).

## PARTS LISTING - ILLUSTRATION # 1

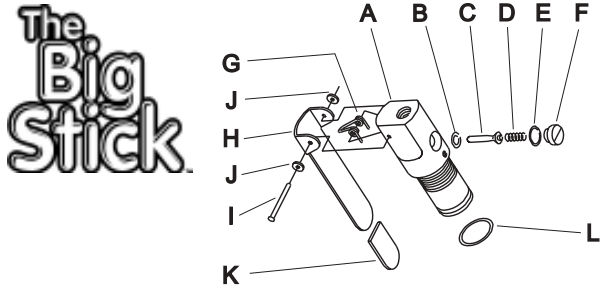
ITEM#	PART#	DESCRIPTION	QTY.	ITEM#	PART#	DESCRIPTION	QTY.
1	27025	WHIP HOSE ASSEMBLY 12"	1	22	27014	CHISEL HOLDER ASSEMBLY, 7/8" HEX SHANK (REFER TO ILLUS. #2)	1
2	27001	VALVE BODY ASSEMBLY (REFER TO ILLUS. #2)	1	23		CHISEL, 7/8" SHANK	1
3	11578	SCREW, SKT. BUTTON HEAD 1/4-20 x 1/2	1	27033		BS-3 3" SINGLE BEVEL (STANDARD)	
4	24040	STRAP, SHOULDER (INCLUDES SHOULDER PAD, 2 D-RINGS, 2 BRACKETS)	1	27031		BS-2 2" SINGLE BEVEL (OPTIONAL)	
5	27020	O-RING 2 x 30mm	2	27032		BS-2D 2" DOUBLE BEVEL (OPTIONAL)	
6	27026	GRIP, FOAM 1-1/2" ID x 12" L	1	24	27034	BS-3M 3" MILLED CHISEL, 7/8" SHANK (OPTIONAL)	
7	27006	CASING, ERGONOMIC STEEL	1	25		SCRAPER BLADES (TO BE USED w/ # 27034 MILLED CHISEL)	
8	10015	NUT, LOCK , 1/4-20	1	27035		BS-6S 6" STANDARD (5-PACK)	
9	27007	CLAMP, HANDLE	1	27036		BS-6B 6" w/ BEVEL (5- PACK)	
10	10856	SCREW, SKT. HD. CAP 1/4-20 x 1-1/2	1	26	10855	SCREW, SKT. BUTTON HEAD 3/8-24 x 1	2
11	66045	WRENCH, HEX KEY 3/16 in.	1	27	10025	WASHER, FLAT 3/8	2
12	10856	SCREW, SKT. HD. CAP 1/4-20 x 1-1/2	1	28	10152	NUT, NYLON LOCK 3/8-24	2
13	C10588	HANDLE, U-SHAPED	1	29	27037	BS-MPT CHIPPING POINT (OPTIONAL)	
14	61067	GRIP, FOAM 7/8" ID x 5" L	1				
15	C10598	PLUG, CAP 1"	1				
*16	27008	CYLINDER HOUSING ASSY. (REFER TO ILLUS.#2)	1				
*17	27028	PISTON & CYLINDER ASSY. (INCLUDES ITEMS 18 TO 21)					
18	27013	PISTON	1				
19	27012	CYLINDER	1				
20	27021	O-RING 2 x 52mm	1				
21	27022	O-RING 2 x 55mm	1				

**\* NOTE:** TO ORDER KIT OF ALL O-RINGS (8 TOTAL) USE PART # 27030. THIS KIT INCLUDES ITEMS # 5, 20, & 21 FROM ILLUSTRATION # 1 AND ITEMS 2-B, 2-E, 13-D, 13-E, & 13-F FROM ILLUSTRATION # 2.



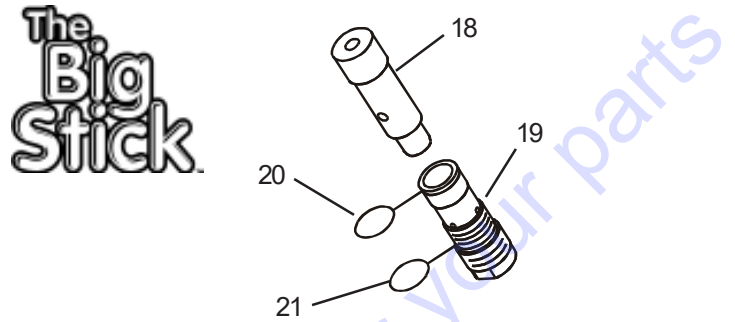
## PARTS LISTING - ILLUSTRATION # 2

### ITEM # 2 27001 VALVE BODY ASSEMBLY



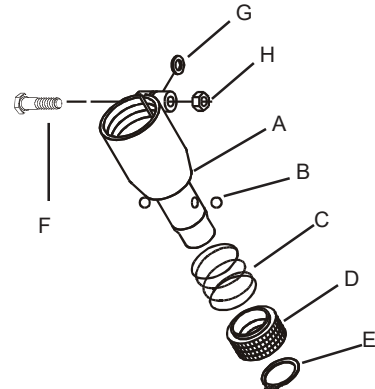
ITEM	PART#	DESCRIPTION	QTY.
2-A	27002	VALVE BODY	1
2-B	27038	O-RING, #112,3/32 x 1/2"ID	1
2-C	27003	VALVE STEM	1
2-D	C10607	SPRING, VALVE STEM	1
2-E	27039	O-RING, 2 x 18mm	1
2-F	27004	VALVE STEM RETAINER	1
2-G	C10607	SPRING, DOUBLE TORSION	1
2-H	27027	LEVER, AIR VALVE 6-1/2"	1
2-I	11556	RIVET, 1/8x1-1/2 OVAL HEAD	1
2-J	11557	WASHER, RIVET 1/8"IDx3/8"OD	2
2-K	C10569	GRIP, FLAT RED .125x.75x1.5L	1
2-L	27020	O-RING, 2 x 30mm	1

### ITEM # 17 27028 PISTON & CYLINDER ASSEMBLY



ITEM	PART#	DESCRIPTION	QTY.
18	27013	PISTON (HAMMER)	1
19	27012	CYLINDER	1
20	27021	O-RING 2 x 52mm	1
21	27022	O-RING 2 x 55mm	1

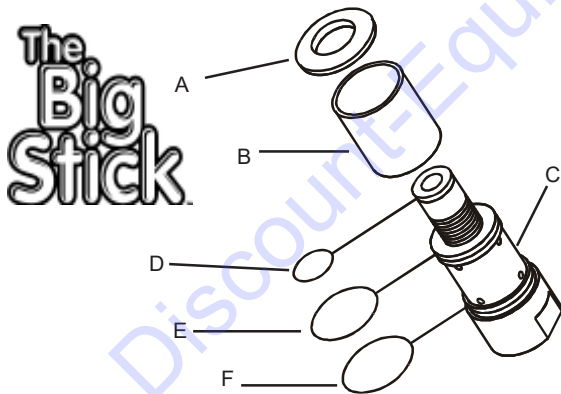
### ITEM # 22 27014 CHISEL HOLDER ASSEMBLY



ITEM	PART#	DESCRIPTION	QTY.
22-A	27015	CHUCK BODY	1
22-B	27017	BALL, CHROME 3/8"	1
22-C	27018	SPRING, COMP. 1.906"OD x 1.41"FL	1
22-D	27016	COLLAR, KNURLED, BALL LOCKING	1
22-E	27019	RETAINING RING, EXT. 1-1/2"	1
22-F	27029	SCREW, CAP 3/8-16 x 1-3/4	1
22-G	10025	WASHER, FLAT 3/8	1
22-H*	10810	NUT, LOCK 3/8-16	1

\*NOTE: Item H is used as a Jam Nut to prevent the Cap Screw (F) from loosening during operation.

### ITEM # 16 27008 CYLINDER HOUSING ASSEMBLY



ITEM	PART#	DESCRIPTION	QTY.
16-A	27011	CYLINDER HOUSING CAP	1
16-B	27010	CYLINDER HOUSING SLEEVE	1
16-C	27009	CYLINDER HOUSING MAIN BODY	1
16-D	27020	O-RING 2 x 30mm	1
16-E	27023	O-RING 2 x 65mm	1
16-F	27024	O-RING 2 x 67mm	1

## TO DISASSEMBLE THE EDCO BIG STICK CHISEL SCALER MODEL ALR – BS

NOTE: Items #2, #16, #17 and #22 can be replaced as assemblies.

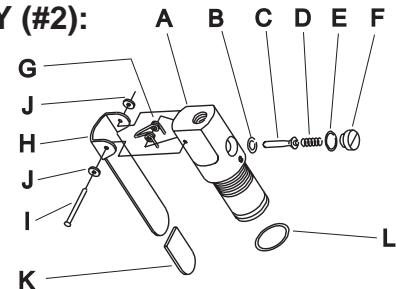
NOTE: All threaded parts are standard right-hand threads.

1. Place Cylinder Housing (#16) in a vice and clamp on the flat ends.
2. To remove Chisel Holder Chuck (#22), loosen Lock Nut (#22-H) and Capscrew (#22-F) then unscrew the Chisel Holder from the Cylinder (#19).
3. Unscrew Piston & Cylinder Assembly (#17) from Cylinder Housing (#16). Cylinder (#19) contains the Piston (#18). Piston is removed by gently tapping on the small end and lifting Piston (#18) up and out of the Cylinder (#19).
4. Cylinder Housing (#16) is not an operating part and rarely needs to be removed. If an air leak is detected, the “ O “ rings (#5, D, E & F) may need to be replaced.
5. Casing (#7) if damaged, may be unscrewed from the Cylinder Housing (#16) and Valve Assembly (#2). There are no moving parts in the Casing (#7).
6. To remove the Valve Assembly (#2) simply unthread from the upper end of the Casing (#7).
7. To replace Rubber Hand Grip (#6), remove Air Valve Assembly (#2), moisten grip with water and slide to a comfortable position on Casing (#7).

### STEPS TO DISASSEMBLE THE AIRVALVE BODY ASSEMBLY (#2):

1. To remove Internal Valve Parts:

E – “O” ring  
 D – Compression Spring  
 C – Valve Stem  
 B – “O” Ring



First remove the Capping Screw (F). Note that the Valve Stem (C) should be replaced if it is worn and loose in Valve Body (A).

2. The “ O “ Ring for the Valve Stem (B) may become unseated due to excess air pressure. Check this item if tool fails to stop running when valve handle is released.
3. The Valve Lever (H) is held in place by the Rivet (I) and two Washers (J).

The “ O “ Ring (L) must be in place on Valve Assembly (A) to prevent air leaks when assembly is threaded into casing (#7).

NOTE: All “O” Rings should be inspected and replaced if air leakage or damage is detected.



# PARTS FINDER

**Search Website  
by Part Number**



**Search Manual  
Library For Parts  
Manual & Lookup Part  
Numbers – Purchase  
or Request Quote**

**Search Manuals**

Enter your information to help us find the right parts manual for your machine.

\* Brand:

\* Model:

\* Serial:

\* Part Number:

SEARCH

**Can't Find Part or  
Manual? Request Help  
by Manufacturer,  
Model & Description**

**Parts Order Form**

Please fill in the following information to help us find the right part for your machine.

Manufacturer:	<input type="text"/>
Model:	<input type="text"/>
Description:	<input type="text"/>
Part Number:	<input type="text"/>
Quantity:	<input type="text"/>
Notes:	<input type="text"/>

Discount-Equipment.com is your online resource for quality parts & equipment.

Florida: **561-964-4949** Outside Florida TOLL FREE: **877-690-3101**

**Need parts?**

Click on this link: <http://www.discount-equipment.com/category/5443-parts/> and choose one of the options to help get the right parts and equipment you are looking for. Please have the machine model and serial number available in order to help us get you the correct parts. If you don't find the part on the website or on one of the online manuals, please fill out the request form and one of our experienced staff members will get back to you with a quote for the right part that your machine needs.

We sell worldwide for the brands: Genie, Terex, JLG, MultiQuip, Mikasa, Essick, Whiteman, Mayco, Toro Stone, Diamond Products, Generac Magnum, Airman, Haulotte, Barreto, Power Blanket, Nifty Lift, Atlas Copco, Chicago Pneumatic, Allmand, Miller Curber, Skyjack, Lull, Skytrak, Tsurumi, Husquvarna Target, Stow, Wacker, Sakai, Mi-T-M, Sullair, Basic, Dynapac, MBW, Weber, Bartell, Bennar Newman, Haulotte, Ditch Runner, Menegotti, Morrison, Contec, Buddy, Crown, Edco, Wyco, Bomag, Laymor, EZ Trench, Bil-Jax, F.S. Curtis, Gehl Pavers, Heli, Honda, ICS/PowerGrit, IHI, Partner, Imer, Clipper, MMD, Koshin, Rice, CH&E, General Equipment, Amida, Coleman, NAC, Gradall, Square Shooter, Kent, Stanley, Tamco, Toku, Hatz, Kohler, Robin, Wisconsin, Northrock, Oztec, Toker TK, Rol-Air, APT, Wylie, Ingersoll Rand / Doosan, Innovatech, Con X, Ammann, Mecalac, Makinex, Smith Surface Prep, Small Line, Wanco, Yanmar