

REVISED STARTING SERIAL# 3522



ELECTRIC TILE SAW

PARTS LIST MANUAL



Model TMS-10

(SHOWN WITH OPTIONAL FOLDING STAND)



PARTS FINDER

**Search Website
by Part Number**



**Search Manual
Library For Parts
Manual & Lookup Part
Numbers – Purchase
or Request Quote**

Search Manuals

Enter your information to help us find the right parts manual for your machine.

* Brand:

* Model:

* Serial:

* Part Number:

SEARCH

**Can't Find Part or
Manual? Request Help
by Manufacturer,
Model & Description**

Parts Order Form

Please fill in the following information to help us find the right part for your machine.

Manufacturer:	<input type="text"/>
Model:	<input type="text"/>
Description:	<input type="text"/>
Part Number:	<input type="text"/>
Quantity:	<input type="text"/>
Notes:	<input type="text"/>

Submit

Discount-Equipment.com is your online resource for quality parts & equipment.

Florida: **561-964-4949** Outside Florida TOLL FREE: **877-690-3101**

Need parts?

Click on this link: <http://www.discount-equipment.com/category/5443-parts/> and choose one of the options to help get the right parts and equipment you are looking for. Please have the machine model and serial number available in order to help us get you the correct parts. If you don't find the part on the website or on one of the online manuals, please fill out the request form and one of our experienced staff members will get back to you with a quote for the right part that your machine needs.

We sell worldwide for the brands: Genie, Terex, JLG, MultiQuip, Mikasa, Essick, Whiteman, Mayco, Toro Stone, Diamond Products, Generac Magnum, Airman, Haulotte, Barreto, Power Blanket, Nifty Lift, Atlas Copco, Chicago Pneumatic, Allmand, Miller Curber, Skyjack, Lull, Skytrak, Tsurumi, Husquvarna Target, Stow, Wacker, Sakai, Mi-T-M, Sullair, Basic, Dynapac, MBW, Weber, Bartell, Bennar Newman, Haulotte, Ditch Runner, Menegotti, Morrison, Contec, Buddy, Crown, Edco, Wyco, Bomag, Laymor, EZ Trench, Bil-Jax, F.S. Curtis, Gehl Pavers, Heli, Honda, ICS/PowerGrit, IHI, Partner, Imer, Clipper, MMD, Koshin, Rice, CH&E, General Equipment, Amida, Coleman, NAC, Gradall, Square Shooter, Kent, Stanley, Tamco, Toku, Hatz, Kohler, Robin, Wisconsin, Northrock, Oztec, Toker TK, Rol-Air, APT, Wylie, Ingersoll Rand / Doosan, Innovatech, Con X, Ammann, Mecalac, Makinex, Smith Surface Prep, Small Line, Wanco, Yanmar

READ AND UNDERSTAND THE OPERATORS INSTRUCTION MANUAL THOROUGHLY BEFORE ATTEMPTING TO OPERATE THIS EQUIPMENT. Death or serious injury could occur if this machine is used improperly.



SAFETY MESSAGES



The safety instructions are preceded by a graphic alert message of DANGER, WARNING, or CAUTION.



Indicates an imminent hazard which, if not avoided, will result in death or serious injury.



Indicates an imminent hazard which, if not avoided, can result in death or serious injury.



Indicates hazards which, if not avoided, could result in serious injury and or damage to the equipment.

GASOLINE

Powered Equipment



- Do not operate gasoline powered equipment without adequate ventilation. Carbon monoxide is an invisible, odorless gas that can kill.

ELECTRICAL

Powered Equipment



- ELECTRICAL HAZARD** - Be sure equipment is properly grounded. Failure to comply could kill or result in serious injury.



The engine exhaust from this product contains chemicals known to the State of California to cause cancer, birth defects or other reproductive harm.

GENERAL INSTRUCTIONS



- You must read and understand the operators instruction manual and all other manuals associated with this machine. For your safety and the safety of others around you, it is extremely important to fully understand how to operate this machine in the way it was intended. Different model machines or older/newer versions of the same model may have different parts and controls that you need to understand. If instructions are not readable or available DO NOT USE this machine and contact Discount-equipment for a replacement Manual.
- You must be able to physically handle the bulk weight and power of this machine. If not properly controlled this machine can cause death or serious injury.
- Do not operate this machine in an impaired mental state. You must be able to exercise good judgement and reactions to maintain a safe working environment.
- This is a "one person" machine which means only one operator can be operating the machine at any one time. For the safety of others, maintain a safe operating distance to other personnel. Your work area should be defined and appropriately marked so bystanders and coworkers do not stand or walk near this machine and end up seriously injured by flying debris or exposing them to harmful noise or dust.
- This equipment is for Commercial use. Although this is a "one person" machine your work team should understand how to shut this machine off and quickly get medical help if an accident strikes the operator.
- Keep all guards in place during operation. The guards are to provide protection from inadvertent contact with dangerous moving parts, pinch points, or hot surfaces.
- Wear appropriate Personal Protective Equipment (PPE) including safety glasses, safety boots, work gloves, respiratory protection,

hearing protection, and head protection. Do not wear loose clothing that can get tangled in moving parts. Failure to do so could result in dismemberment or death. **Wear an approved respirator when removing hazardous materials or when grinding/cutting dry materials. Some dust particles such as concrete dust can contain silicate particles which can cause silicosis (a very serious lung disease). Contact NIOSH or OSHA for further details. When wet grinding/cutting, avoid contact with the concrete/asphalt slurry which can cause serious skin irritations.**

- You must maintain this machine per the maintenance schedule in the operator manual. Remember before adjusting, servicing, or fueling this machine, disconnect the source of power to the machine by disconnecting the spark plug (Gas models), or by unplugging the electrical power cord (electric models) or air hose (Pneumatic models) AT THE MACHINE so you can assure yourself it remains unplugged while you are working on it. Do not modify this machine. Use only genuine EDCO parts and accessories. Repairs and service should be performed by approved EDCO dealers or authorized technicians.
- You should look carefully around the area before you begin work so you can identify potential hazards such as deck inserts, pipes, columns, openings, electrical cords or outlets, or any other objects protruding from the slab surface.
- This machine has no brain so you must use your own. There is no substitute for safety. The safety decals on the machine are to serve as a reminder for information you must already know before you begin using this machine. Take a moment to reread the safety decals each time you use the machine. If your machine is missing any decals, contact Discount-equipment for a replacement.

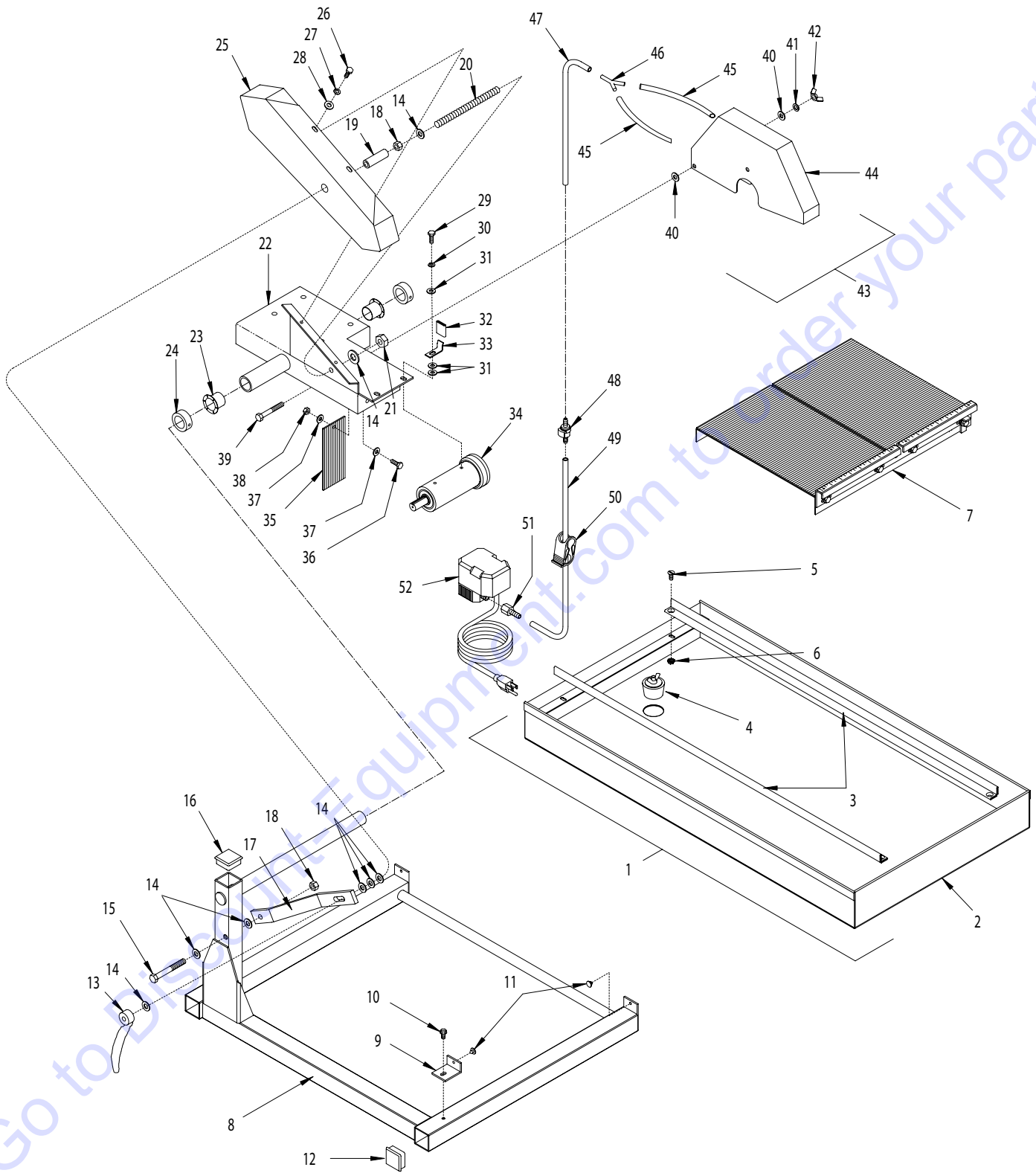
PARTS LIST MANUAL

EDCO MODEL TMS-10

Section	Page Number
Safety Messages / General Instructions	2
How To Order Replacement Parts	3
Illustration 1: Main Grouping	4,5
Illustration 2: Rolling Table Assembly Grouping	6
Illustration 3: Arbor Assembly Grouping	7
Illustration 4: Motor & Belt Drive Grouping	7
Limited Equipment Warranty	back cover

TMS-10 TILE SAWS		
PART NO.	MODEL	MOTOR OPTION
24100	TMS10-1L	LEESON 1.0 HP, 1 PHASE, 60 HZ, 115V
24200	TMS10-1.5L	LEESON 1.5 HP, 1 PHASE, 60 HZ, 115V

ILLUSTRATION 1 : MAIN GROUPING

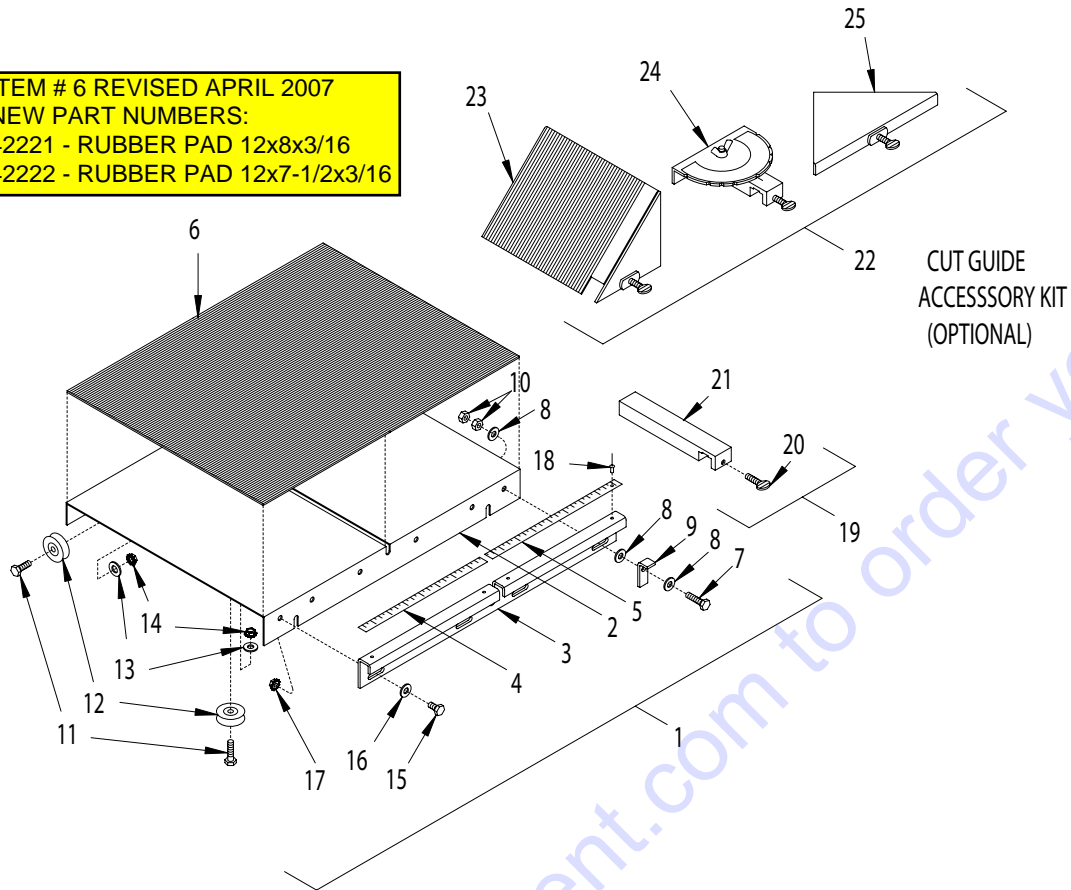


ARBOR HEIGHT LOCKING BAR ASSEMBLY HAS CHANGED - CLICK HERE FOR CHANGES

PARTS LISTING - ILLUSTRATION 1 : MAIN GROUPING							
ITEM#	PART#	DESCRIPTION	QTY.	ITEM#	PART#	DESCRIPTION	QTY.
1	42101A	PAN ASSY. W/ RAILS & STOPPER (INCLUDES ITEMS 2-6)	1	27	10038	WASHER, LOCK 1/4	2
2	42101	PAN	1	28	10602	WASHER, FLAT 1/4	2
3	42102B	TRACK RAIL 33-3/4"L	2	29	10834	SCREW, CAP 1/4-20 x 1/2	3
4	40378	STOPPER ASSEMBLY 1-1/2"	1		10018	SCREW, CAP 1/4-20 x 3/4	1
5	11540	SCREW, FLAT HEAD SLOTTED 1/4-20 x 5/8	4	30	10038	WASHER, LOCK 1/4	4
6	10861	NUT, KEPS 1/4-20	4	31	10602	WASHER, FLAT 1/4	4
7	42170	TABLE COMPLETE, ROLLING (REFER TO ILLUS. 2 FOR BREAKDOWN)	1	32	42144	COVER, VIBRATION	1
8	42107	BASE AND POST ASSEMBLY	1	33	42128	BRACKET, BLADE GUARD RETAINER	1
9	42126	BRACKET, NYLON RIVET	2	34	42114T	ARBOR ASSY. COMPLETE (REFER TO ILLUS. 3 FOR BREAKDOWN)	1
10	10846	SCREW, CAP STSHW 1/4-20 x 1/2	2	35	42161	FLAP, SPLASH 2-1/2x5-1/2	1
11	42127	RIVET, NYLON PUSH-IN PANEL	4	36	10018	SCREW, CAP 1/4-20 x 3/4	1
12	42123	PLUG, SQ. TUBE 1-1/2 x 14 GA., BLK.	2	37	10602	WASHER, FLAT 1/4	2
13	40044	NUT, TAIL HANDLE 3/8-16	1	38	10861	NUT, KEPS 1/4-20	1
14	10025	WASHER, FLAT 3/8 (*SHIM AS REQ'D TO ALIGN DECK PROPERLY)	*	39	10341	SCREW, CAP 5/16-18 x 2-1/4	1
15	10030	SCREW, CAP 3/8-24x2	1	40	10213	WASHER, FLAT 5/16	2
16	42148	PLUG, SQ. TUBE 1-1/2 x 11 GA., BLK.	1	41	10801	WASHER, LOCK 5/16	1
17	42162	LOCKING BAR, ARBOR HEIGHT	1	42	10902	NUT, WING 5/16-18	1
18	10004	NUT, LOCK 3/8-24	2	43	42113T	GUARD SUBASSEMBLY, BLADE (INCLUDES ITEMS 45-51)	1
19	42163	SPACER, ARBOR HEIGHT LOCKING BAR	1	44	42113	GUARD, BLADE 10"	1
20	42164	ALLTHREAD ROD 3/8-16 X 4-1/4 5	1	45	42141	HOSE 1/4"ID x 8"L	2
21	10156	NUT, HEX NYLON LOCK 3/8-16	1	46	99323	BARBED FITTING, "Y" 1/4"HOSE	1
22	42108N	DECK, MOTOR & ARBOR	1	47	42142	HOSE 1/4"ID X 12"L	1
23	41123	BEARING, SLEEVE 1"ID NYLON FLANGED	2	48	42134	COUPLING, QUICK-DISCONNECT 1/4"	1
24	10427	COLLAR, LOCKING 1"ID	2	49	42143	HOSE 1/4"ID x 18"L	1
25	42112	COVER, BELT	1	50	42131	CLAMP, TUBE, FLOW CONTROL 3/4"	1
26	10834	SCREW, CAP 1/4-20 x 1/2	2	51	40415	BARB, 1/4HOSE x 1/4FPT	1
				52	40017	PUMP, WATER, 115VAC, SUBMERSIBLE	1

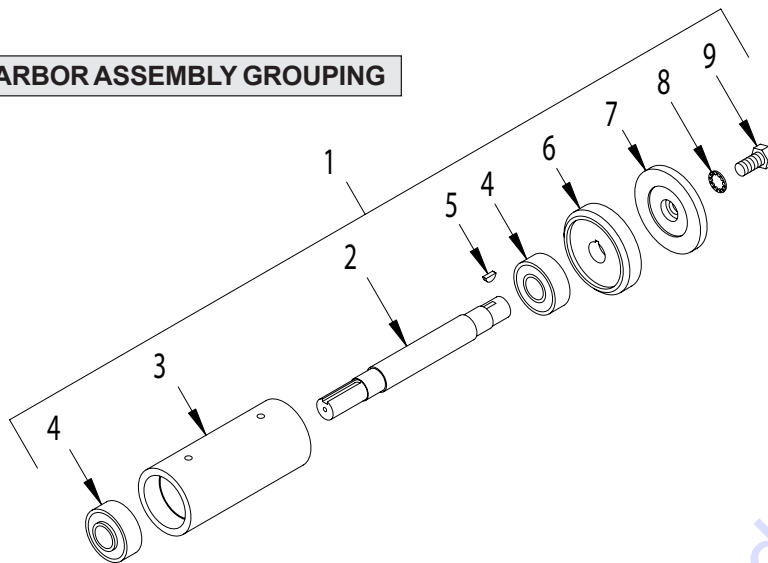
ILLUSTRATION 2 : ROLLING TABLE ASSEMBLY GROUPING

**ITEM # 6 REVISED APRIL 2007
NEW PART NUMBERS:
42221 - RUBBER PAD 12x8x3/16
42222 - RUBBER PAD 12x7-1/2x3/16**



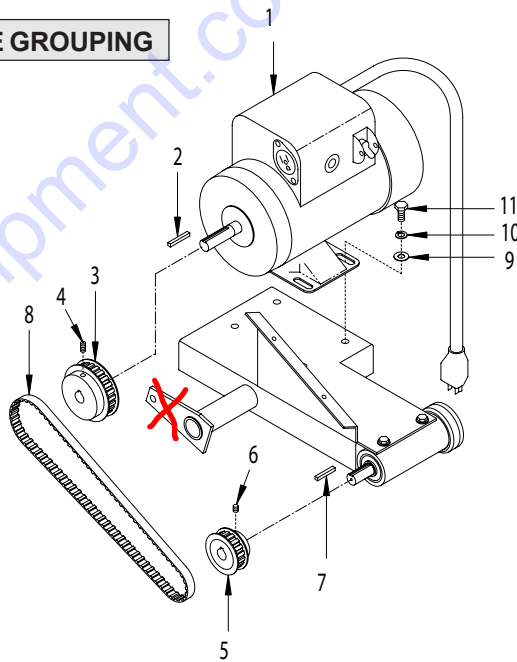
ITEM#	PART#	DESCRIPTION	QTY.
1	42170	TABLE COMPLETE, ROLLING (INCLUDES ITEMS 2-18)	1
2	42171	TABLE, ROLLING	1
3	42172	TABLE FRONT PANEL, ROLLING	1
4	42137	RULE, ADHESIVE-BACKED, 1-7, R-L	1
5	42136	RULE, ADHESIVE-BACKED, 1-8, L-R	1
6	42175	RUBBER PAD 12-1/4 X 17 X 1/8	1
7	10018	SCREW, CAP 1/4-20x3/4	1
8	10602	WASHER, FLAT 1/4	3
9	42106	LATCH, ROLLING TABLE	1
10	10015	NUT, LOCK 1/4-20	2
11	10031	SCREW, CAP 1/4-20x1	6
12	14082	PULLEY BEARING 1-1/4DIA.x1/4BORE	6
13	10602	WASHER, FLAT 1/4	6
14	10861	NUT, KEPS 1/4-20	6
15	10834	SCREW, CAP 1/4-20x1/2	3
16	10602	WASHER, FLAT 1/4	3
17	10861	NUT, KEPS 1/4-20	3
18	11571	RIVET, BLIND 1/8 X .640"L X .250"HD	4
19	42160	GUIDE ASSY., STRAIGHT CUT	1
20	42133	SCREW, THUMB, SPADE HEAD 1/4-20 X 3/4	1
21	42132	GUIDE ONLY, STRAIGHT CUT	1
22	42149	ACCESSORY PACKAGE (INCLUDES ITEMS 22-24)	1
23	42155	GUIDE ASSY., 45 DEG. MITER	1
24	42150	GUIDE ASSY., ADJ. PROTRACTOR	1
25	42153	GUIDE ASSY., DUAL 45D ANGLE	1

ILLUSTRATION 3 : ARBOR ASSEMBLY GROUPING



ITEM#	PART#	DESCRIPTION	QTY.	ITEM#	PART#	DESCRIPTION	QTY.
1	42114T	ARBORASSEMBLY COMPLETE (INCLUDES ITEMS 2-9)	1	5	40036	KEY, WOODRUFF 1/8x3/8 (#403)	1
2	42115	ARBOR SHAFT 6-3/4"L	1	6	42117	ARBOR BACKING PLATE 2-1/2"	1
3	42116	ARBOR HOUSING	1	7	42118	ARBOR BLADE CAP 2-1/2"	1
4	42119	BEARING, RADIAL BALL 17x40x.563	2	8	10453	WASHER, LOCK, INT. TOOTH 3/8"	1
				9	10021	SCREW, CAP 3/8-24x1	1

ILLUSTRATION 4 : MOTOR & BELT DRIVE GROUPING



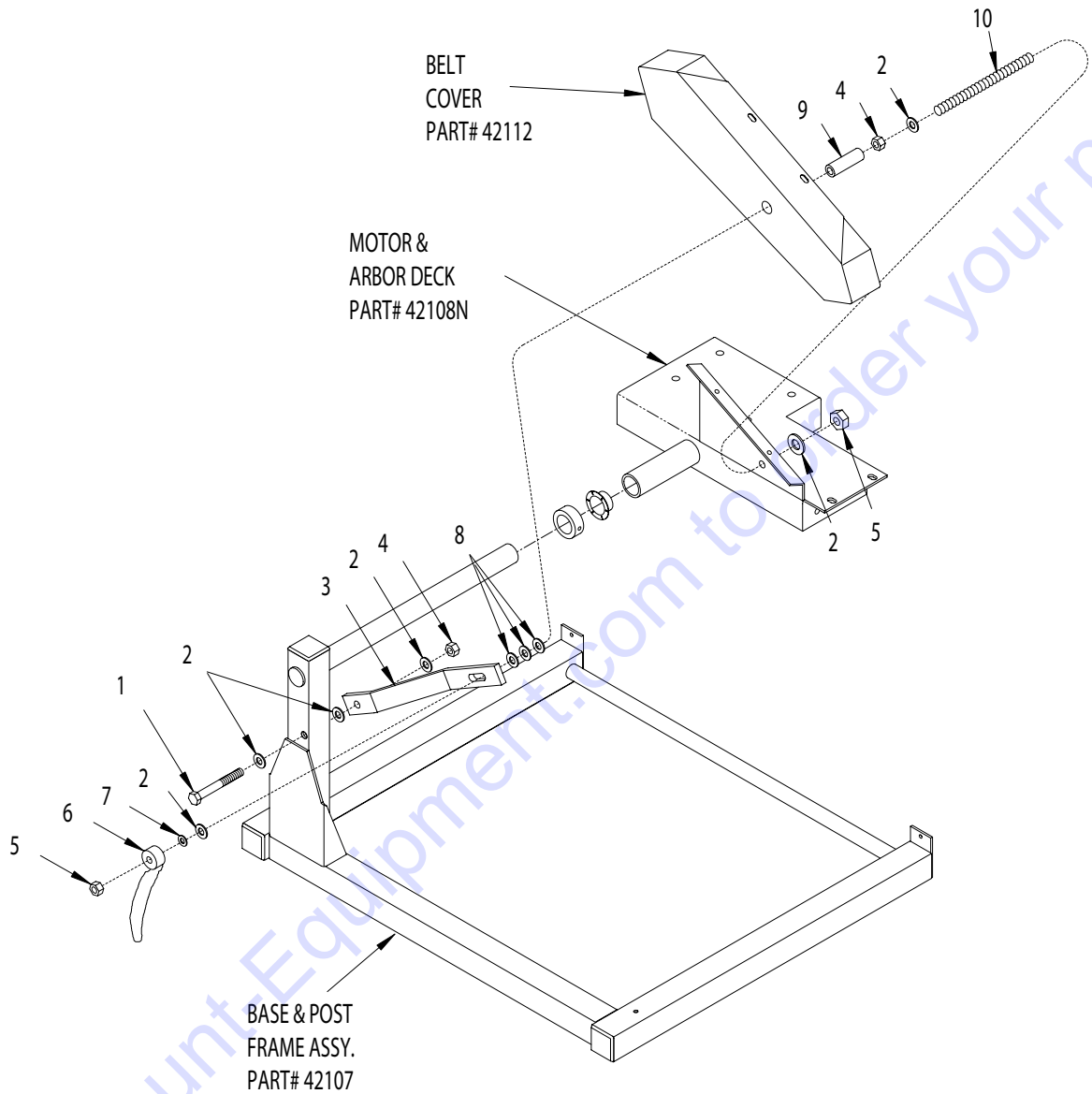
ITEM#	PART#	DESCRIPTION	QTY.	ITEM#	PART#	DESCRIPTION	QTY.
1	MOTOR, LEESON		1	6	10139	SCREW, SET 1/4-20x5/16	1
	16031	1HP-1PHASE-60HZ-1650RPM		7	10060	KEY 3/16 SQ.x1-1/4	1
	16036	1.5HP-1PHASE-60HZ-1650RPM		8	42124	BELT, TIMING 300L050	1
2	-----	KEY 3/16SQ.x1-3/8 (INCLUDED W/ MOTOR)	1	9	10213	WASHER, FLAT 5/16	4
3	42120	PULLEY, TIMING, 24L050x5/8" BORE	1	10	10801	WASHER, LOCK 5/16	4
4	10162	SCREW, SET 1/4-20x1/2	1	11	10053	SCREW, CAP 5/16-18x3/4	4
5	42121	PULLEY, TIMING, 17L050 X 5/8"BORE	1				



MODEL TMS-10

REVISED ARBOR HEIGHT LOCKING BAR ASSEMBLY

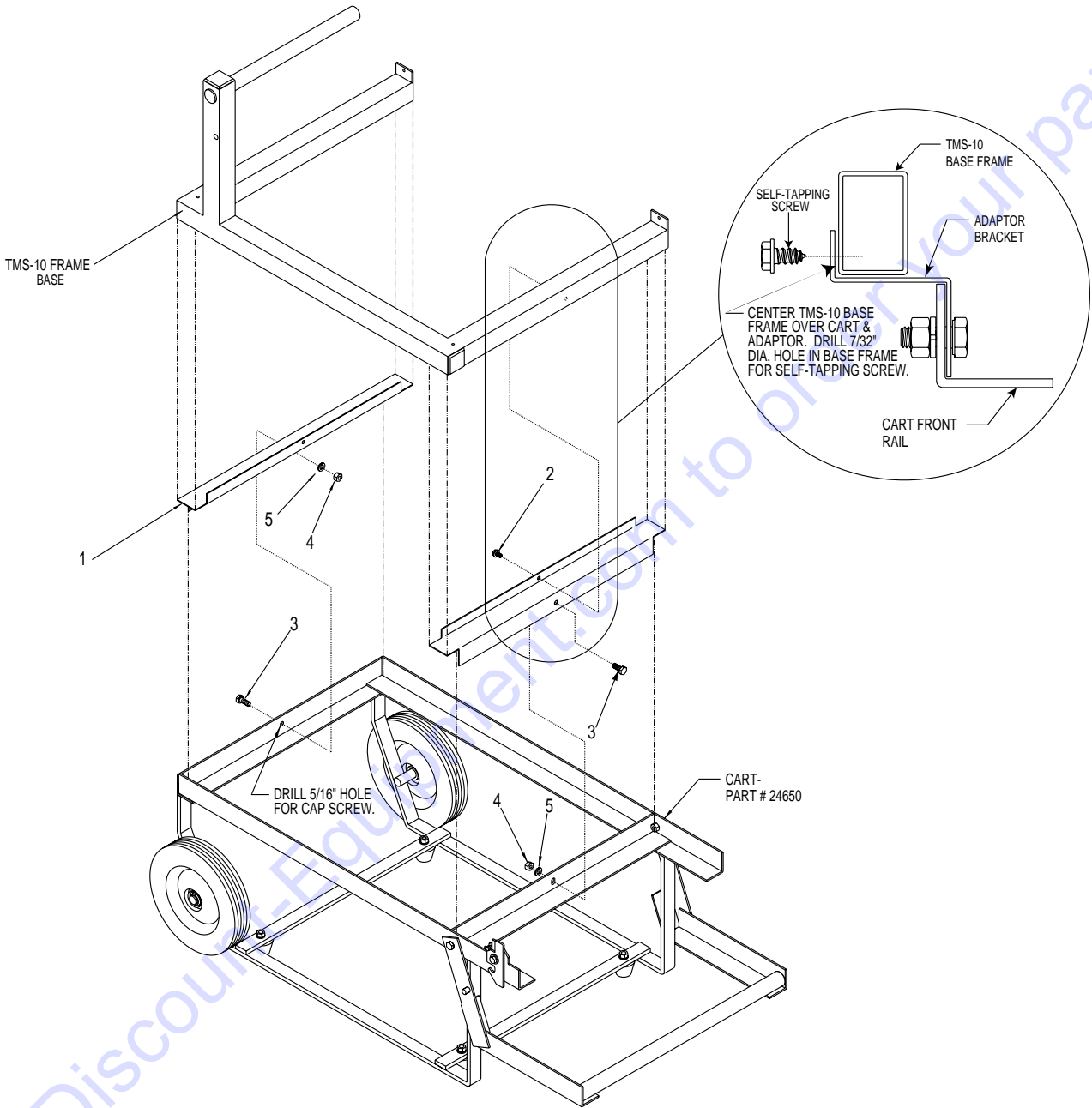
REV. STARTING SERIAL # 3527



ITEM#	PART#	DESCRIPTION	QTY.
1	10393	SCREW, CAP 3/8-24 X 2-1/2	1
2	10025	WASHER, FLAT 3/8	6
3	42162	LOCKING BAR, ARBOR HEIGHT	1
4	10004	NUT, LOCK 3/8-24	2
5	10156	NUT, HEX NYLON LOCK 3/8-16	2
6	40044	NUT, TAIL HANDLE 3/8-16	1
7	10453	WASHER, LOCK, INT. TOOTH 3/8"	3
8	10025	WASHER, FLAT 3/8 (*SHIM AS REQ'D TO ALIGN DECK PROPERLY)	*
9	42163	SPACER, ARBOR HEIGHT LOCKING BAR	1
10	42164	ROD, ALLTHREAD 3/8-16 X 5	1



**MODEL TMS-10
CART ADAPTER BRACKET KIT
PART NO. 24656**



ITEM#	PART#	DESCRIPTION	QTY.
1	24655	BRACKET, ADAPTER	2
2	10846	SCREW, SELF-TAP HEX WASHER 1/4-20 x 1/2	2
3	10053	SCREW, CAP 5/16-18 x 3/4	2
4	10054	NUT 5/16-18	2
5	10801	WASHER, LOCK 5/16	2



PARTS FINDER

**Search Website
by Part Number**



**Search Manual
Library For Parts
Manual & Lookup Part
Numbers – Purchase
or Request Quote**

Search Manuals

Enter your information to help us find the right parts manual for your machine.

* Brand:

* Model:

* Serial:

* Part Number:

SEARCH

**Can't Find Part or
Manual? Request Help
by Manufacturer,
Model & Description**

Parts Order Form

Please fill in the following information to help us find the right part for your machine.

Manufacturer:	<input type="text"/>
Model:	<input type="text"/>
Description:	<input type="text"/>
Part Number:	<input type="text"/>
Quantity:	<input type="text"/>
Notes:	<input type="text"/>

Submit

Discount-Equipment.com is your online resource for quality parts & equipment.

Florida: **561-964-4949** Outside Florida TOLL FREE: **877-690-3101**

Need parts?

Click on this link: <http://www.discount-equipment.com/category/5443-parts/> and choose one of the options to help get the right parts and equipment you are looking for. Please have the machine model and serial number available in order to help us get you the correct parts. If you don't find the part on the website or on one of the online manuals, please fill out the request form and one of our experienced staff members will get back to you with a quote for the right part that your machine needs.

We sell worldwide for the brands: Genie, Terex, JLG, MultiQuip, Mikasa, Essick, Whiteman, Mayco, Toro Stone, Diamond Products, Generac Magnum, Airman, Haulotte, Barreto, Power Blanket, Nifty Lift, Atlas Copco, Chicago Pneumatic, Allmand, Miller Curber, Skyjack, Lull, Skytrak, Tsurumi, Husquvarna Target, Stow, Wacker, Sakai, Mi-T-M, Sullair, Basic, Dynapac, MBW, Weber, Bartell, Bennar Newman, Haulotte, Ditch Runner, Menegotti, Morrison, Contec, Buddy, Crown, Edco, Wyco, Bomag, Laymor, EZ Trench, Bil-Jax, F.S. Curtis, Gehl Pavers, Heli, Honda, ICS/PowerGrit, IHI, Partner, Imer, Clipper, MMD, Koshin, Rice, CH&E, General Equipment, Amida, Coleman, NAC, Gradall, Square Shooter, Kent, Stanley, Tamco, Toku, Hatz, Kohler, Robin, Wisconsin, Northrock, Oztec, Toker TK, Rol-Air, APT, Wylie, Ingersoll Rand / Doosan, Innovatech, Con X, Ammann, Mecalac, Makinex, Smith Surface Prep, Small Line, Wanco, Yanmar