



PARTS LIST MANUAL

MODEL KL14



14" DOWNCUT - CONCRETE AND ASPHALT WALK BEHIND SAW

SKU #	MODEL #	POWER OPTION
39200	KL14-6.5H	HONDA GASOLINE ENGINE MODEL GX200

**READ AND UNDERSTAND THE OPERATOR'S SAFETY MANUAL
THOROUGHLY BEFORE ATTEMPTING TO OPERATE THIS EQUIPMENT.**

Death or serious injury could occur if this machine is used improperly.

READ AND UNDERSTAND THE ENGINE MANUFACTURERS INSTRUCTIONS AND OPERATORS MANUAL BEFORE OPERATION.



PARTS FINDER

**Search Website
by Part Number**



**Search Manual
Library For Parts
Manual & Lookup Part
Numbers – Purchase
or Request Quote**

Search Manuals

Enter your information to help us find the right parts manual for your machine.

* Brand:

* Model:

* Serial:

* Part Number:

SEARCH

**Can't Find Part or
Manual? Request Help
by Manufacturer,
Model & Description**

Parts Order Form

Please fill in the following information to help us find the right part for your machine.

Manufacturer:	<input type="text"/>
Model:	<input type="text"/>
Description:	<input type="text"/>
Part Number:	<input type="text"/>
Quantity:	<input type="text"/>
Notes:	<input type="text"/>

Submit

Discount-Equipment.com is your online resource for quality parts & equipment.

Florida: **561-964-4949** Outside Florida TOLL FREE: **877-690-3101**

Need parts?

Click on this link: <http://www.discount-equipment.com/category/5443-parts/> and choose one of the options to help get the right parts and equipment you are looking for. Please have the machine model and serial number available in order to help us get you the correct parts. If you don't find the part on the website or on one of the online manuals, please fill out the request form and one of our experienced staff members will get back to you with a quote for the right part that your machine needs.

We sell worldwide for the brands: Genie, Terex, JLG, MultiQuip, Mikasa, Essick, Whiteman, Mayco, Toro Stone, Diamond Products, Generac Magnum, Airman, Haulotte, Barreto, Power Blanket, Nifty Lift, Atlas Copco, Chicago Pneumatic, Allmand, Miller Curber, Skyjack, Lull, Skytrak, Tsurumi, Husquvarna Target, Stow, Wacker, Sakai, Mi-T-M, Sullair, Basic, Dynapac, MBW, Weber, Bartell, Bennar Newman, Haulotte, Ditch Runner, Menegotti, Morrison, Contec, Buddy, Crown, Edco, Wyco, Bomag, Laymor, EZ Trench, Bil-Jax, F.S. Curtis, Gehl Pavers, Heli, Honda, ICS/PowerGrit, IHI, Partner, Imer, Clipper, MMD, Koshin, Rice, CH&E, General Equipment, Amida, Coleman, NAC, Gradall, Square Shooter, Kent, Stanley, Tamco, Toku, Hatz, Kohler, Robin, Wisconsin, Northrock, Oztec, Toker TK, Rol-Air, APT, Wylie, Ingersoll Rand / Doosan, Innovatech, Con X, Ammann, Mecalac, Makinex, Smith Surface Prep, Small Line, Wanco, Yanmar



SAFETY INFORMATION



SAFETY MESSAGES

• Safety Instructions are preceded by a graphic alert symbol of DANGER, WARNING, or CAUTION.

DANGER

Indicates an imminent hazard which, if not avoided, will result in death or serious injury.

WARNING

Indicates an imminent hazard which, if not avoided, can result in death or serious injury.

CAUTION

Indicates hazards which, if not avoided, could result in serious injury and or damage to the equipment.

GASOLINE / PROPANE POWERED EQUIPMENT

WARNING

• Engine exhaust from this product contains chemicals known to the State of California to cause cancer, birth defects or other reproductive harm.

WARNING

• Tilting a gasoline powered machine fitted with an EPA approved vented charcoal filter gas cap, beyond 20° can cause fuel leakage. If a leak occurs, do not start or run the engine until the leak is fixed. Eliminate all other ignition sources in the immediate area (no smoking, flares, sparks or flames). Use approved gasoline absorbing material to contain the fuel leakage. Then use clean, non-sparking tools to collect absorbed materials then dispose of these contaminants properly.



• Gasoline is extremely flammable and poisonous. It should only be dispensed in well ventilated areas, and with a cool engine.

• Small gasoline engines produce high concentrations of carbon monoxide (CO) example: a 5 HP 4 cycle engine operation in an enclosed 100,000 cu. ft. area with only one change of air per hour is capable of providing deadly concentrations of CO in less than fifteen minutes. Five changes of air in the same area will produce noxious fumes in less than 30 minutes. Gasoline powered equipment should not be used in enclosed or partially enclosed areas. Symptoms of CO poisoning include, head-ache, nausea, weakness, dizziness, visual problems and loss of consciousness. If symptoms occur - get into fresh air and seek medical attention immediately.

- Never refuel a hot engine or an engine while it is running.
- Engines are shipped from factory without fuel/oil.



• Propane is extremely flammable and is heavier than air and tends to settle in low areas where a spark or flame could ignite gas. DO NOT start or operate this propane engine in a poorly ventilated area where leaking propane gas could accumulate and endanger safety of persons in area. If headache develops, shut off machine. Have it checked for carbon monoxide emissions by a qualified technician before using it again. To ensure personal safety, installation and repair of propane fuel supply systems must be performed only by qualified technicians. Carbon monoxide emissions from this machine are greatly increased due to a dirty combustion air cleaner.

ELECTRICAL POWERED EQUIPMENT



Extreme care must be taken when operating electric models with water present: Ensure power cord is properly grounded, is attached to a Ground-Fault-Interrupter (GFI) outlet, and is undamaged.

- Check all electrical cables - be sure connections are tight and cable is continuous and in good condition. Be sure cable is correctly rated for both the operating current and voltage of this equipment.
- Improper connection of the equipment grounding conductor can result in a risk of electric shock. Check with qualified electrician or service person if there is any doubt as to whether the outlet is properly grounded. Adhere to all local codes and ordinances.
- NOTE: In the event of a malfunction or breakdown, grounding provides a path of least resistance for the electric current to dissipate. The motor is equipped with a grounded plug and must be connected to an outlet that is properly installed and properly grounded. DO NOT modify the plug provided on the motor. If the plug does not fit the outlet have a qualified electrician install the proper receptacle.

ELECTRICAL POWERED EQUIPMENT CONTINUED

- Do not disconnect power by pulling cord. To disconnect, grasp the plug, not the cord.
- Unplug power cord at the machine when not in use and before servicing.
- Switch motor OFF before disconnecting power.
- Never use frayed, damaged, taped or under rated extension cords. Electrical shock could result in death or serious injury to the operator and damage to the equipment.
- Assure you are using the proper extension cord length.

GENERAL INSTRUCTIONS

- Equipment should only be operated by trained personnel in good physical condition and mental health (not fatigued). The operator and maintenance personnel must be physically able to handle the bulk weight and power of this equipment.
- This is a one person tool. Maintain a safe operating distance to other personnel. It is the operators' responsibility to keep other people (workers, pedestrians, bystanders, etc.) away during operation. Block off the work area in all directions with roping, safety netting, etc. Failure to do so may result in others being injured by flying debris or exposing them to harmful dust and noise.
- This equipment is intended for commercial use only.
- For the operator's safety and the safety of others, always keep all guards in place during operation.
- Never let equipment run unattended.



- Personal Protection Equipment and proper safety attire must be worn when operating this machinery. The operator must wear approved safety equipment appropriate for the job such as hard hat and safety shoes when conditions require. Hearing protection MUST be used when operational noise levels of this equipment may exceed 85db. Eye protection MUST be worn at all times.



Keep body parts, loose clothing and accessories away from moving parts. Failure to do so could result in dismemberment or death.

- Do not modify the machine.
- Stop motor/engine when adjusting or servicing this equipment. Maintain a safe operating distance from flammable materials. Sparks from the cutting-action of this machine can ignite flammable materials or vapors.



DUST WARNING

WARNING

Some dust created by power sanding, sawing, grinding, drilling, and other construction activities contains chemicals known to cause cancer, birth defects, or other reproductive harm. Materials being removed can be toxic or hazardous. A breathing respirator is required to help protect the operator.

- Some examples of these chemicals are:
- Lead from lead-based paints.
 - Crystalline silica from bricks, concrete and other masonry products. Your risk of exposure to these chemicals varies depending on how often you do this type of work. To reduce your risk: work in a well ventilated area, use a dust control system, such as an industrial-style vacuum, and wear approved personal safety equipment, such as a dust/particle respirator designed to filter out microscopic particles.
 - See more on the importance of dust prevention and silica warnings at: osha.gov/silica

PARTS LIST MANUAL

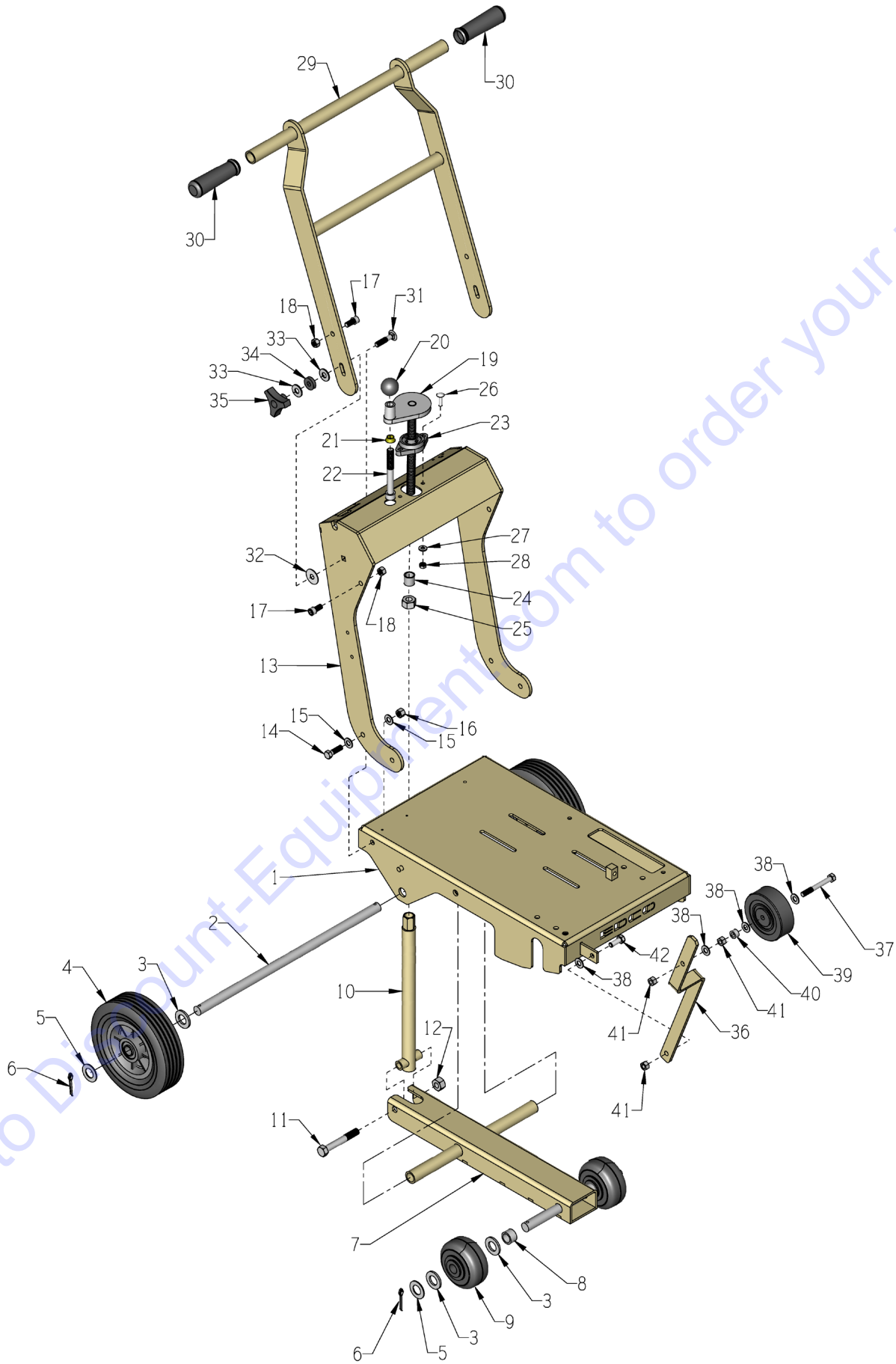
MODEL KL14

14" DOWNCUT - COMPACT WALK BEHIND SAW

TABLE OF CONTENTS

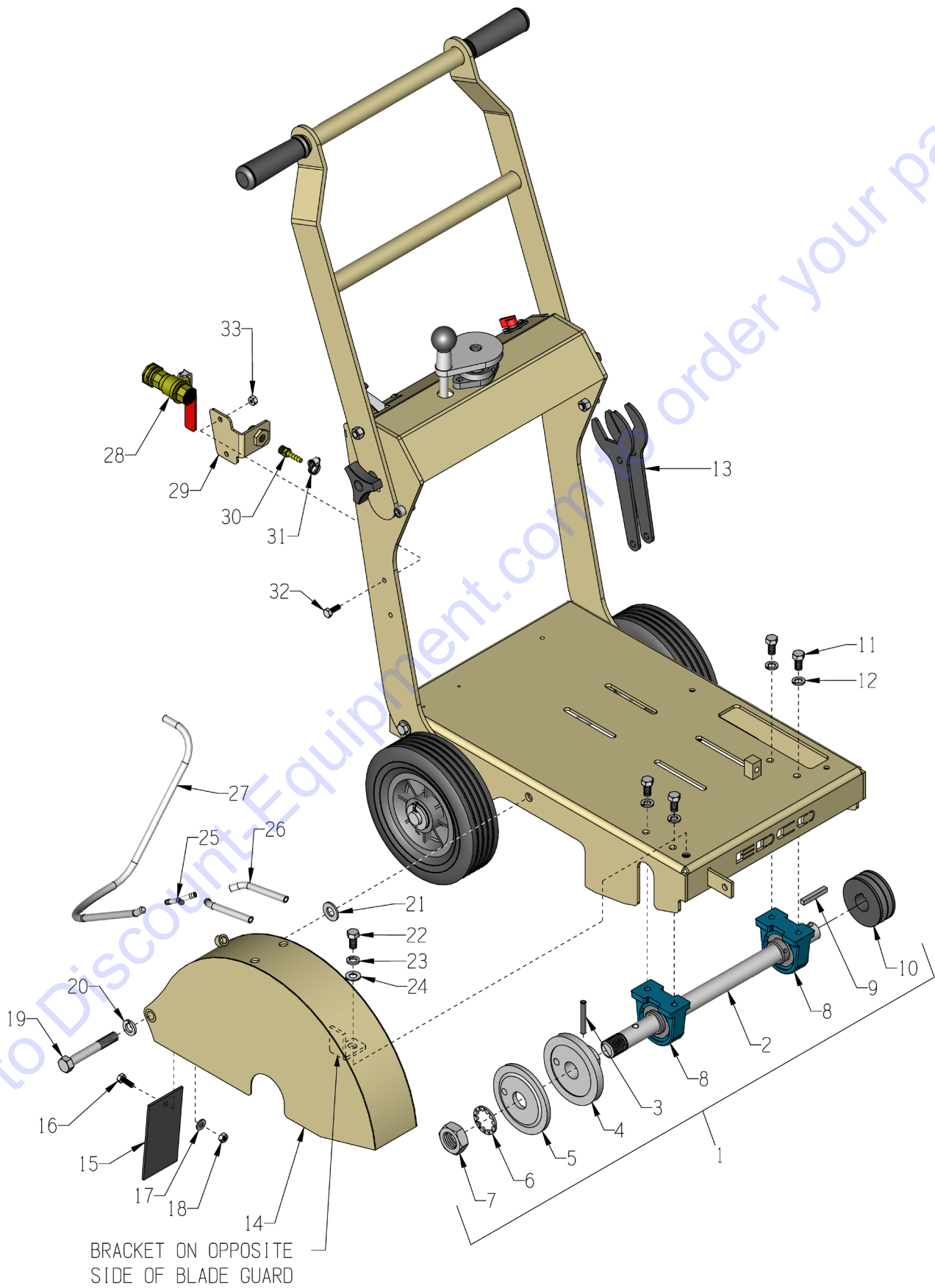
<u>Section</u>	<u>Page Number</u>
Safety Information	2
How To Order Replacement Parts	3
Illustration 1: Main Grouping	4, 5
Illustration 2: Arbor & Blade Guard Grouping	6, 7
Illustration 3: Engine & Belt Drive Grouping	8, 9
Illustration 4: Optional Water Tank Assembly	10, 11
Switch & Engine Wiring Diagram	12
Decal Sheet	13
Notes	14
Limited Equipment Warranty of Sale	15
STOP - Before Using This Product	16

ILLUSTRATION 1: MAIN GROUPING



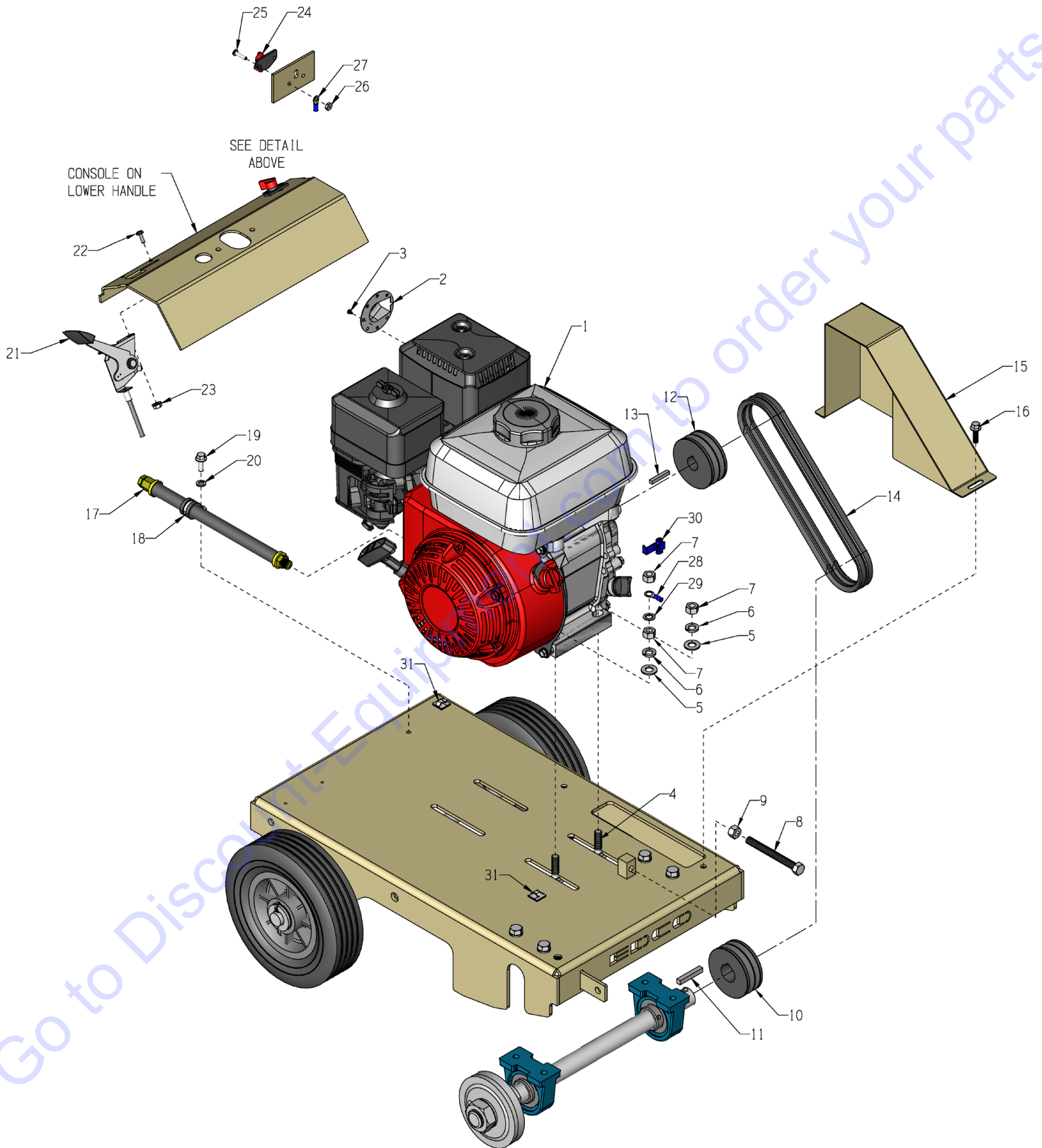
PARTS LISTING - ILLUSTRATION 1: MAIN GROUPING			
ITEM #	PART #	DESCRIPTION	QTY.
1	54001	MAIN FRAME, KL-14	1
2	54010	AXLE SHAFT, 3/4DIA. X 19, KL14	1
3	10009	WASHER, FLAT 3/4 SAE ZINC	6
4	79013	WHEEL, 8 X 2-1/2 X 3/4"BRG.POLY HUB	2
5	11597	WASHER .755"ID X 1.25"OD X .060"THK	4
6	10306	PIN, COTTER 3/16 X 1-1/2	4
7	54006	FORK, KL-14	1
8	54031	FORK WHEEL SPACER, KL14	2
9	54026	WHEEL, 4 X 2 X 3/4 W/ ROLLER BRG.	2
10	54005	CUT CONTROL, LINKAGE WELDMENT KL14	1
11	10202	SCREW, CAP 1/2-20 X 3	1
12	10205	NUT, HEX LOCK 1/2-20 ZINC	1
13	54002	LOWER HANDLE, KL-14	1
14	10021	SCREW, CAP 3/8-24 X 1	2
15	10025	WASHER, FLAT 3/8 SAE ZINC	4
16	10058	NUT, HEX LOCK 3/8-24 W/ NYLON PATCH	2
17	11851	SCREW, SKT. HD. CAP 3/8-24 X 3/4 SS	4
18	10152	NUT, HEX NYLON LOCK 3/8-24 ZINC	4
19	80008	HANDWHEEL, SMALL W/ 5/8-11 X 12"ROD	1
20	14023	KNOB, BALL 1-3/8 W/ 1/2-13THD, BLK.	1
21	50550	SLEEVE, BRASS 1/2" TAPERED	1
22	10411	SCREW, SKT. HD. CAP 1/2-13 X 4 ZINC	1
23	80009	BEARING, BALL 5/8" 2-HOLE (NO G.F.)	1
24	55010	SPACER, HANDWHEEL 5/8"ID X 3/4"L	1
25	10046	NUT, HEX 5/8-11 ZINC	1
26	10412	BOLT, CARRIAGE 1/4-20 X 1	2
27	10602	WASHER, FLAT 1/4 SAE ZINC	2
28	10861	NUT, KEPS LOCK 1/4-20 ZINC	2
29	54003	UPPER HANDLE, KL-14	1
30	10608	GRIP, HAND 1" MODEL AT	2
31	10087	BOLT, CARRIAGE 3/8-16 X 1-3/4	2
32	28133	WASHER, FLAT 13/32 X 1-1/4 X .047	2
33	10025	WASHER, FLAT 3/8 SAE ZINC	4
34	56018	BUSHING, RUBBER 1"OD X 3/8"ID X 1/4	2
35	80011	KNOB, 3-PRONG W/ 3/8-16 THD.	2
36	54008	GUIDE BAR, KL-14	1
37	10885	SCREW, CAP 3/8-24 X 3	1
38	10025	WASHER, FLAT 3/8 SAE ZINC	4
39	50024	WHEEL 4 X 1-3/8 X 3/8"BORE	1
40	10011	SPACER, STEEL 5/8OD X 3/8ID X 3/8T	1
41	10058	NUT, HEX LOCK 3/8-24 W/ NYLON PATCH	3
42	10021	SCREW, CAP 3/8-24 X 1	1

ILLUSTRATION 2: ARBOR & BLADE GUARD GROUPING



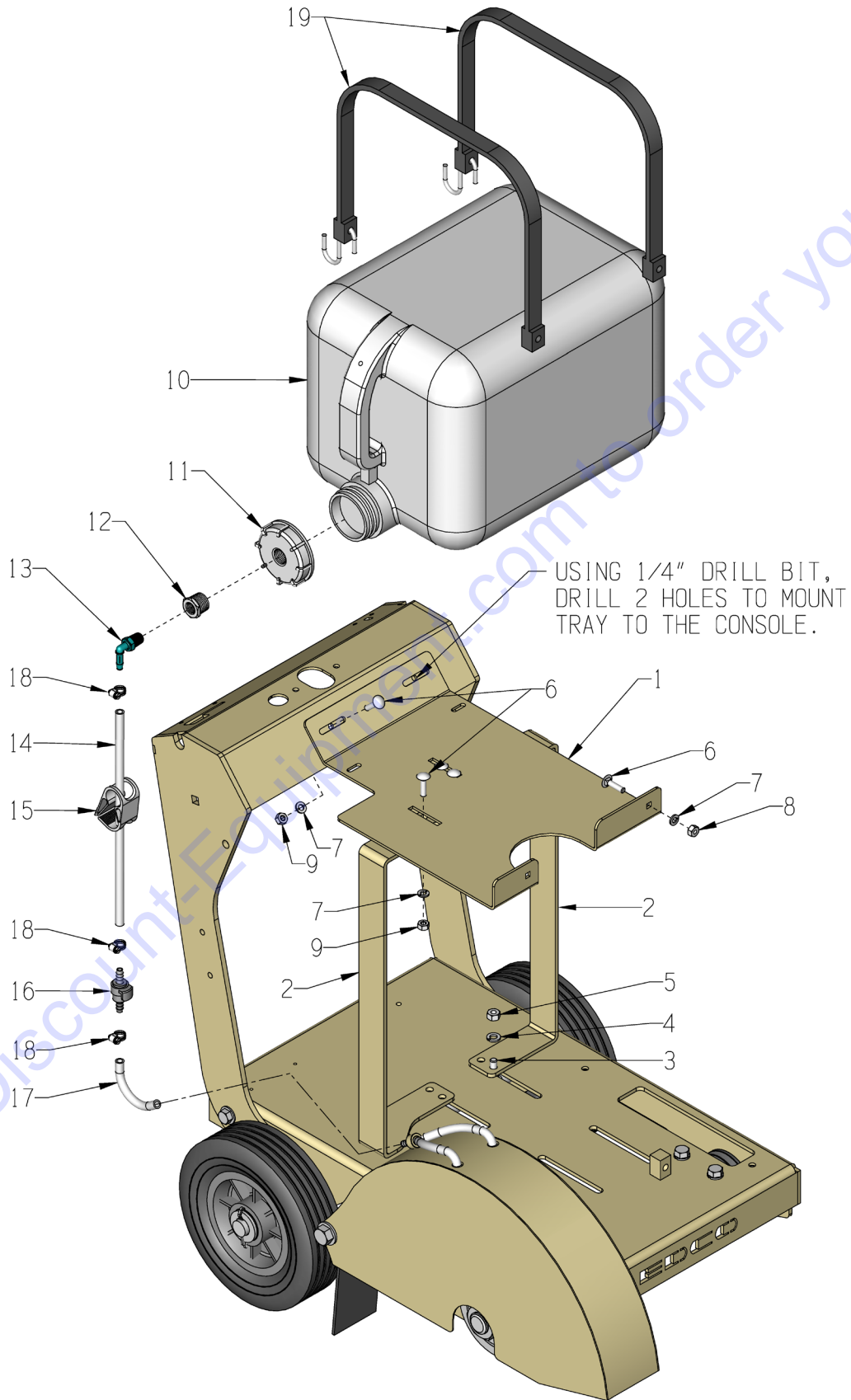
PARTS LISTING - ILLUSTRATION 2: ARBOR & BLADE GUARD GROUPING			
ITEM #	PART #	DESCRIPTION	QTY.
1	54011A	ARBOR ASSY. COMPLETE, KL-14 (ITEMS 2 -10)	1
2	54011	ARBOR SHAFT, KL-14	1
3	10211	PIN, ROLL 5/16 X 2	1
4	56026	ARBOR BACKING PLATE 4"	1
5	56025	ARBOR BLADE CAP 4"OD W/1"HOLE	1
6	55009	WASHER, LOCK, INT. TOOTH 1"	1
7	50019	NUT, HEX JAM 1-14 ZINC GRADE A	1
8	50222	BEARING, BALL 1" TPB NOTE: COLLARS FACE INWARD	2
9	40317	KEY 1/4SQ X 1-5/8	1
10	52125	SHEAVE 2.75"OD X 2GR.3V X 1"BORE	1
11	10907	SCREW, CAP 3/8-16 X 3/4	4
12	10811	WASHER, LOCK 3/8 ZINC	4
13	54024	WRENCH, KL-14	2
14	54034	GUARD, BLADE 14", KL-14	1
15	54025	FLAP, SPLASH 2-1/2 X 5	1
16	11811	BOLT, FLANGE 1/4-20 X 3/4 ZINC	1
17	10602	WASHER, FLAT 1/4 SAE ZINC	1
18	10150	NUT, HEX NYLON LOCK 1/4-20 ZINC	1
19	10386	SCREW, CAP 1/2-13 X 4-1/2	1
20	10045	WASHER, LOCK 1/2 ZINC	1
21	10040	WASHER, GARRET 17/32 X 1 X .054	1
22	10907	SCREW, CAP 3/8-16 X 3/4	1
23	10811	WASHER, LOCK 3/8 ZINC	1
24	10025	WASHER, FLAT 3/8 SAE ZINC	1
25	99323	BARBED FITTING, "Y" 1/4"HOSE	1
26	54015	HOSE, WATER 1/4"ID X 4.75", KL-14	2
27	54016	HOSE, WATER 1/4"ID X 14", KL-14	1
28	10711A	VALVE & HOSE CONNECTOR ASSY.	1
29	54017	BRACKET, WATER VALVE, KL-14	1
30	97034	BARB, 1/4HOSE X 1/4MPT (BRASS)	1
31	10714	CLAMP, HOSE, SAE #4, ADJ. TO 5/8"	1
32	11811	BOLT, FLANGE 1/4-20 X 3/4 ZINC	2
33	10861	NUT, KEPS LOCK 1/4-20 ZINC	2

ILLUSTRATION 3: ENGINE & BELT DRIVE GROUPING



PARTS LISTING - ILLUSTRATION 3: ENGINE & BELT DRIVE GROUPING			
ITEM #	PART #	DESCRIPTION	QTY.
1	15054	ENGINE, HONDA GX200UT2QX2	1
2	15303	MUFFLER CAP, HONDA #18331-883-810	1
3	11872	SCREW, MACHINE M4-0.7 X 6MM PHP	2
4	10817	BOLT, CARRIAGE 5/16-18 X 1-1/2	3
	10918	BOLT, CARRIAGE 5/16-18 X 1-3/4	1
5	10213	WASHER, FLAT 5/16 SAE ZINC	4
6	10801	WASHER, LOCK 5/16 ZINC	4
7	10807	NUT, HEX LOCK 5/16-18 ZINC	5
8	52015	BOLT, TAP 3/8-16 X 3-1/2(FULL THD.)	1
9	10404	NUT, HEX 3/8-16 ZINC	1
10	52125	SHEAVE 2.75"OD X 2GR.3V X 1"BORE	1
11	40317	KEY 1/4SQ X 1-5/8	1
12	40694	SHEAVE 2.75"OD X 2GR.3V X 3/4"BORE	1
13	10170	KEY 3/16SQ X 1-3/4 (INCLUDED WITH ENGINE)	1
14	36921	BELT 3VX-250 COG	2
15	54009	BELT GUARD, KL-14	1
16	11811	BOLT, FLANGE 1/4-20 X 3/4 ZINC	2
17	54028	OIL DRAIN KIT, KL14-6.5H HONDA	1
18	11565	CLAMP, LOOM, 5/8" (SAE SIZE 10)	1
19	10846	SCREW, CAP STSHW 1/4-20 X 5/8	1
20	10038	WASHER, LOCK 1/4 ZINC	1
21	54019H	LEVER CONTROL, THROTTLE, KL14-6.5H	1
22	10830	SCREW, MACHINE PPH 10-32 X 1/2	2
23	10832	NUT, KEPS LOCK 10-32 ZINC	2
24	54004	SWITCH, POWER FOR SUBARU SP210	1
25	10362	SCREW, MACHINE 8-32 X 3/4	2
26	10462	NUT, KEPS LOCK 8-32 ZINC	2
27	50084	TERM., RING #10 16-14GA. INSULATED	1
28	10968	TERM., RING 5/16 16-14GA. INSULATED	1
29	10452	WASHER, LOCK, INT. TOOTH 5/16"	1
30	10970	CONN., WIRE QUICK-SPLICE 18-14 GA.	1
31	36042	ADHESIVE CORD CLIP 5/8"SQ.	5

**ILLUSTRATION 4:
OPTIONAL WATER TANK ASSEMBLY
PART # 300093**



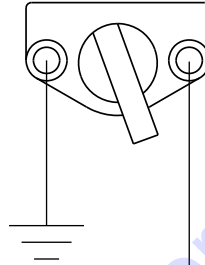
PARTS LISTING - ILLUSTRATION 4: OPTIONAL WATER TANK ASSEMBLY PART # 300093			
ITEM #	PART #	DESCRIPTION	QTY.
1	100500	TRAY, WATER TANK, KL14	1
2	100499	UPRIGHT, WATER TANK, KL14	2
3	10819	BOLT, CARRIAGE 5/16-18 X 1	4
4	10801	WASHER, LOCK 5/16 ZINC	4
5	10054	NUT, HEX 5/16-18 ZINC	4
6	10412	BOLT, CARRIAGE 1/4-20 X 1	8
7	10038	WASHER, LOCK 1/4 ZINC	8
8	10150	NUT, HEX NYLON LOCK 1/4-20 ZINC	2
9	10861	NUT, KEPS LOCK 1/4-20 ZINC	6
10	52031	DRUM, PLASTIC 5 GALLON, 3/4NPT CAP	1
11	52031-1	DRUM, CAP (INCLUDED W/ ITEM # 10)	1
12	52034	BUSHING, HEX 3/4 X 1/4 NPT NYLON	1
13	54035	BARB, 1/4" TUBE X 1/4 NPT MALE, 90°	1
14	54036	HOSE, WATER 1/4"ID X 11"L	1
15	42131	CLAMP, TUBE, FLOW CONTROL 3/4"	1
16	42134	COUPLING, QUICK-DISCONNECT 1/4"	1
17	54037	HOSE, WATER 1/4"ID X 3"L	1
18	10714	CLAMP, HOSE, SAE #4, ADJ. TO 5/8"	3
19	52035	TIE-DOWN STRAP, MOLDED RUBBER 24"	2

SWITCH & ENGINE WIRING DIAGRAM

WIRE COLORS
 BL = BLACK
 R = RED
 Y = YELLOW

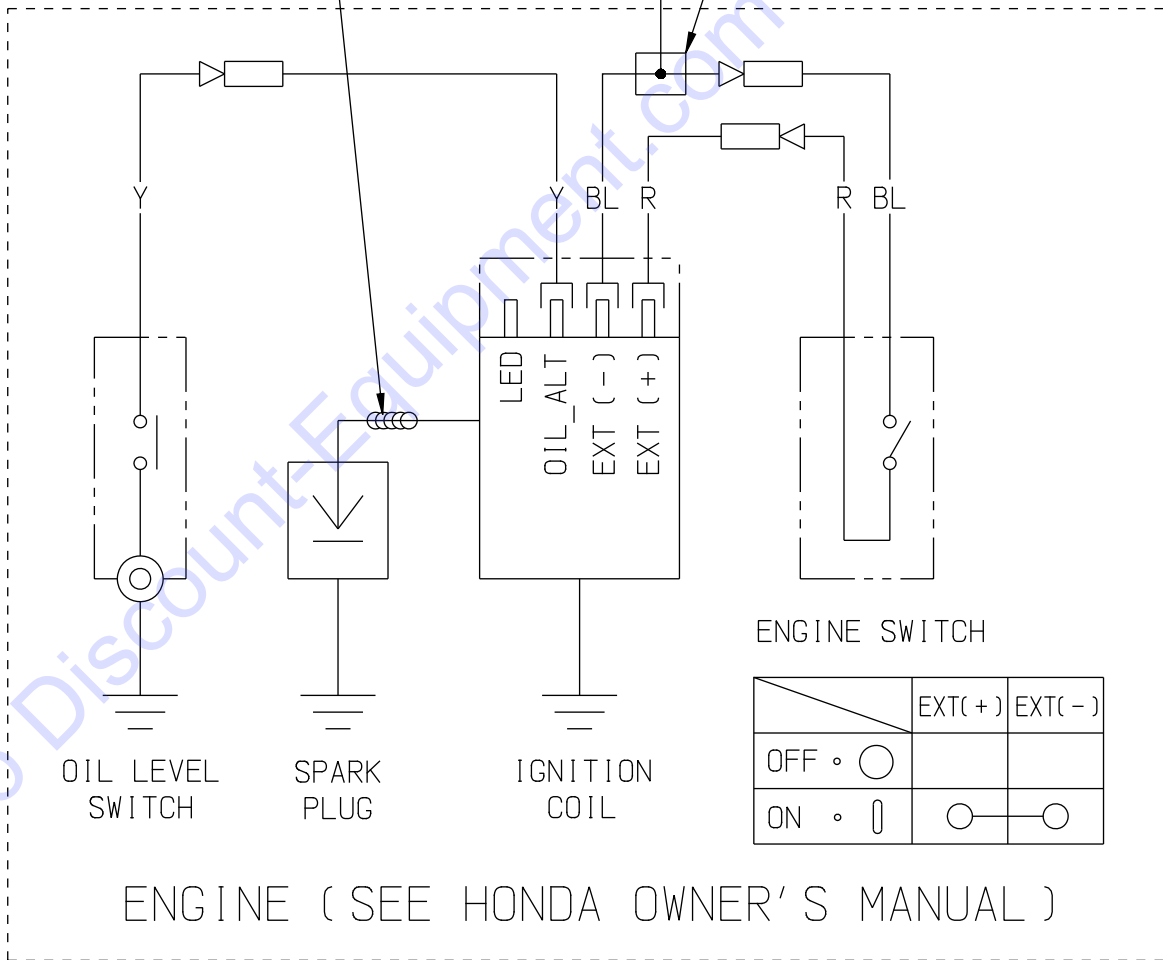
ON-OFF SWITCH
 P/N 54004

OFF ON



WRAP 4 OR 5
 TIMES & SECURE
 WITH TIE WRAP

QUICK-SPLICE
 WIRE CONNECTOR
 P/N 10970



ENGINE SWITCH

	EXT(+)	EXT(-)
OFF • ○		
ON •	○ — ○	

ENGINE (SEE HONDA OWNER'S MANUAL)

PARTS FINDER

**Search Website
by Part Number**



**Search Manual
Library For Parts
Manual & Lookup Part
Numbers – Purchase
or Request Quote**

Search Manuals

Enter your information to help us find the right parts manual for your machine.

* Brand:

* Model:

* Serial:

* Part Number:

SEARCH

**Can't Find Part or
Manual? Request Help
by Manufacturer,
Model & Description**

Parts Order Form

Please fill in the following information to help us find the right part for your machine.

Manufacturer:	<input type="text"/>
Model:	<input type="text"/>
Description:	<input type="text"/>
Part Number:	<input type="text"/>
Quantity:	<input type="text"/>
Notes:	<input type="text"/>

Submit

Discount-Equipment.com is your online resource for quality parts & equipment.

Florida: **561-964-4949** Outside Florida TOLL FREE: **877-690-3101**

Need parts?

Click on this link: <http://www.discount-equipment.com/category/5443-parts/> and choose one of the options to help get the right parts and equipment you are looking for. Please have the machine model and serial number available in order to help us get you the correct parts. If you don't find the part on the website or on one of the online manuals, please fill out the request form and one of our experienced staff members will get back to you with a quote for the right part that your machine needs.

We sell worldwide for the brands: Genie, Terex, JLG, MultiQuip, Mikasa, Essick, Whiteman, Mayco, Toro Stone, Diamond Products, Generac Magnum, Airman, Haulotte, Barreto, Power Blanket, Nifty Lift, Atlas Copco, Chicago Pneumatic, Allmand, Miller Curber, Skyjack, Lull, Skytrak, Tsurumi, Husquvarna Target, Stow, Wacker, Sakai, Mi-T-M, Sullair, Basic, Dynapac, MBW, Weber, Bartell, Bennar Newman, Haulotte, Ditch Runner, Menegotti, Morrison, Contec, Buddy, Crown, Edco, Wyco, Bomag, Laymor, EZ Trench, Bil-Jax, F.S. Curtis, Gehl Pavers, Heli, Honda, ICS/PowerGrit, IHI, Partner, Imer, Clipper, MMD, Koshin, Rice, CH&E, General Equipment, Amida, Coleman, NAC, Gradall, Square Shooter, Kent, Stanley, Tamco, Toku, Hatz, Kohler, Robin, Wisconsin, Northrock, Oztec, Toker TK, Rol-Air, APT, Wylie, Ingersoll Rand / Doosan, Innovatech, Con X, Ammann, Mecalac, Makinex, Smith Surface Prep, Small Line, Wanco, Yanmar