



**ARTICULATING & TELESCOPIC
BOOMS**

CUSTOMERS FIRST. ALWAYS.

PARTNERING FOR SUCCESS

Our dedication to lifting you higher extends well beyond the physical reach of our products. We thrive on building satisfying customer relationships founded on the idea of partnership. Because you, our customer, are at the center of everything we do.

Since 1966, we've been developing products to solve your worksite challenges — and that process never ends. Our team of product managers and engineers uses your input to design new products, featuring the latest technology to meet your changing needs. Then we manufacture those products to stringent standards that help increase quality, lower costs and give you exceptional value for years to come.

PROVIDING SUPERIOR VALUE

Our commitment doesn't end with the sale. Our dedicated service teams are available 24 hours a day, 365 days a year to provide support when you need it most. Our extensive parts network ships most parts within 24 hours, too. Simply put, we're always working to help maximize your "up time" so you can be more successful.

Genie is driven by one goal: doing the right thing, at the right time for our customers. That's not just what we do; it's who we are. So tell us what you need. We're listening.



Genie
A TEREX COMPANY

SETTING THE STANDARD

Genie manufactures some of the most advanced, highest-valued lift equipment in the industry. Genie distinctive blue lifts set the standard for performance and durability — not to mention support from people who understand your business.



REACH AND PERFORMANCE FOR EVERY JOB

Get the reach and reliable performance you need to get the job done from the ever-growing line of Genie® articulating and telescopic booms. Electric, bi-energy or engine-powered — for indoor, outdoor or rough terrain applications — there's a Genie lift for every job.

Genie® articulating Z™-booms provide the ultimate in versatility with up, out and over positioning capabilities for hard-to-access work areas. Genie® telescopic S™-booms are engineered to enhance working efficiency and offer greater horizontal outreach than any other type of aerial platform. And all of the booms can be customized with a variety of options and packages to fit your individual job site needs.

Genie revolutionized the industry with the first articulating boom and remains a world leader in lifts.

NARROW ACCESS SOLUTIONS

Drive through standard doorways, work close to buildings or around obstacles, and access overhead work from aisles and other congested areas. It's all possible with Genie® narrow electric lifts. From tight turning to a rotating platform, they're designed with features that make it easy to maneuver precisely where you need to work. Working heights range from 36 ft (11.14 m) to 46 ft 5 in (14.32 m).

TIGHT ACCESS MANEUVERABILITY

The electric boom line includes a variety of narrow models ideal for the tightest, most confined work areas. These compact designs feature a tight turning radius with zero tailswing on most models for easy maneuvering through narrow aisles and standard doors.



EXCEPTIONAL CONTROL

Proportional lift and drive controls allow precise positioning of the boom and smooth drive performance. For added flexibility, the energy-saving new Z™-40/23N control system allows efficient operation of multiple functions at the same time — which allows you to get where you need to go faster.

The Genie® Z™-40/23N models are the first in the industry to feature the efficient new AC drive system.

PRECISE POSITIONING

The self-leveling platform rotates 90° to either side, while the jib boom moves 130° to 139° vertically, depending on the model. The 4 ft (1.22 m) jib moves horizontally 180° on rotating jib (RJ) models for extra working range. Proportional controls allow you to control the speed of each function and make smooth, precise adjustments in tight areas.



RELIABLE ELECTRIC DRIVE SYSTEMS

Several models feature a 48V DC electric drive system, which can be freely used in areas where quiet, emission-free operation is important. The Z™-40/23N models are the first in the industry to feature Genie's new AC drive system, which combines DC batteries with 3-phase AC drive motors for quiet, more energy efficient operation and longer battery life. This advanced system yields better drive speed and gradeability, and the drive wheels work independently for excellent traction control.



NARROW MODELS AVAILABLE

Z™-30/20N

Z™-30/20N RJ

Z™-34/22N

Z™-40/23N

Z™-40/23N RJ

DC POWER OPTIONS

FOR DEMANDING JOBS

Genie's efficient DC machines offer quiet, emission-free operation in the most sensitive work environments. For industrial applications where the machine must be driven significant distances, the Genie bi-energy system combines the benefits of a 48V DC machine with the versatility of a diesel-powered generator. These units handle challenging jobs all day long, giving you the power to get where you need to go quickly and easily with soft-riding pneumatic tires, excellent maneuverability and zero tailswing. Optional non-marking air- and foam-filled tires also make these models great for industrial applications. Working heights range from 40 ft 6 in (12.52 m) to 51 ft 9 in (15.94 m).



POWER WHEN YOU NEED IT

Lift, maneuver and travel all day with the bi-energy model. The on-board diesel-powered generator acts like a 100 amp battery charger to provide enough electrical power to operate all boom functions, even when the batteries are fully discharged.

Multiple power options meet the demands of a variety of indoor and outdoor applications.

PRECISE POSITIONING AND CONTROL

The self-leveling platform rotates 90° to either side on non-jib models. On jib models, the jib moves 135° to 139° vertically, depending on the model, and rotates 80° to either side. Proportional lift and drive controls allow you to determine the speed of each function and make smooth, precise movements to position yourself exactly where you need to work.



ACCESS AND MANEUVERABILITY

These models offer ideal up and over reach in confined work spaces. Zero tailswing means there's no need to reposition the lift when rotating the turntable in crowded areas. And the compact size suits applications where a lower machine weight is needed.

ON-BOARD BATTERY CHARGING

The direct electric, 48V drive system provides outstanding battery life between charges. For overnight charging, an on-board 25 amp AC charger comes standard on each unit.



DC MODELS AVAILABLE

Z™-34/22 DC

Z™-34/22 BI-ENERGY

Z™-45/25 DC

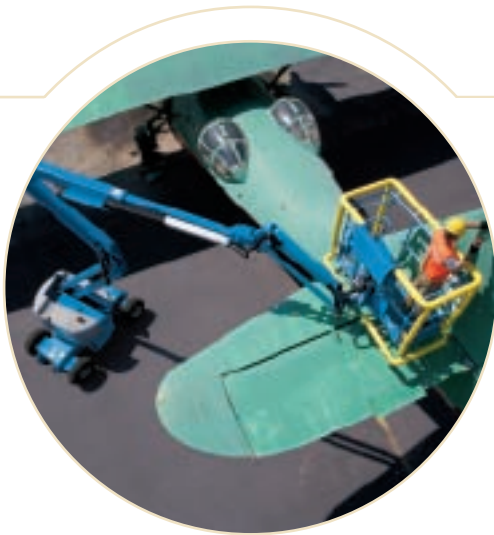
Z™-45/25 BI-ENERGY

Z™-45/25J DC

Z™-45/25J BI-ENERGY

EXCELLENT POSITIONING MEETS SUPERIOR HANDLING

Genie® engine-powered articulating Z™-booms provide lifting versatility with a stunning combination of up, out and over positioning capabilities and extensive outreach. They also offer high ground clearance, two- or four-wheel drive options and rough terrain features for easy travel over irregular ground. Ideal for outdoor construction and industrial applications, these units have working heights between 40 ft 6 in (12.52 m) and 66 ft 4 in (20.39 m) and reach out a maximum of 22 ft 3 in (6.78 m) to 36 ft 3 in (11.05 m).



JOB SITE ACCESS

The Z™-boom design provides lifting versatility with “up and over” positioning and excellent outreach. A tight turning radius and zero tailswing allow unmatched maneuverability in confined work areas.



PERFORMANCE AND TERRAINABILITY

Get the job done faster and more efficiently with a powerful combination of speed and gradeability. Genie’s full-time positive drive traction system and active oscillating axle work together based on ground conditions to help keep the machine moving without losing traction on rough terrain (oscillating axle optional on some models. Not available on Z™-34/22 IC).

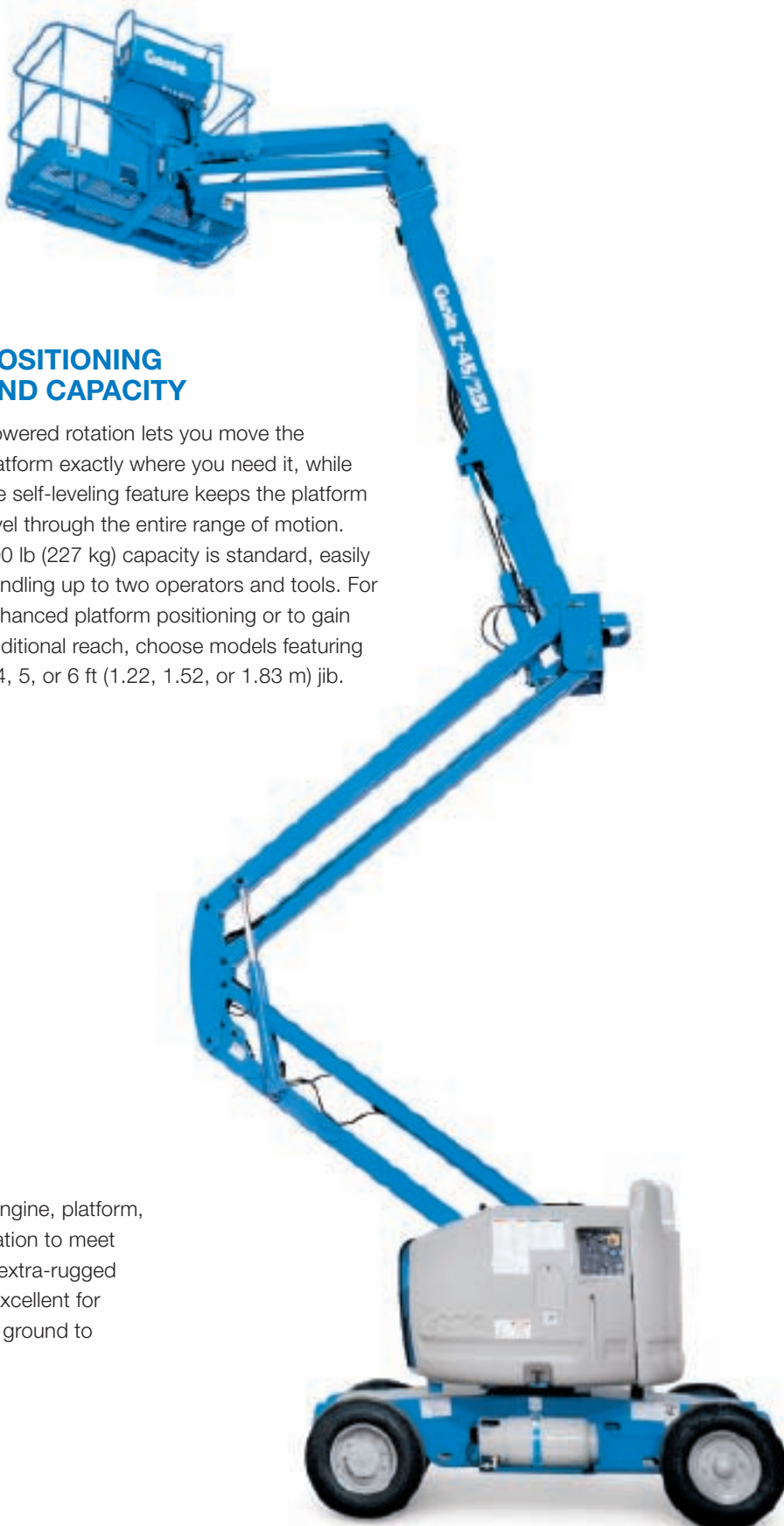


Genie was the first in the industry to introduce the rotating jib.



POSITIONING AND CAPACITY

Powered rotation lets you move the platform exactly where you need it, while the self-leveling feature keeps the platform level through the entire range of motion. 500 lb (227 kg) capacity is standard, easily handling up to two operators and tools. For enhanced platform positioning or to gain additional reach, choose models featuring a 4, 5, or 6 ft (1.22, 1.52, or 1.83 m) jib.



CHOICE AND VERSATILITY

Choose from two- and four-wheel drive, engine, platform, axle and tire options for the best configuration to meet your specific job site requirements. Need extra-rugged performance? Rough terrain models are excellent for traveling (stowed) over irregular or bumpy ground to a worksite.

ROUGH TERRAIN MODELS AVAILABLE

Z™-34/22 IC

Z™-45/25 IC
NARROW

Z™-45/25J IC
NARROW

Z™-45/25 RT

Z™-45/25J RT

Z™-60/34

ULTIMATE LIFTING VERSATILITY

The largest of the Genie® engine-powered articulating Z™-booms, these models have outstanding range of motion — with features like a telescoping jib and 360° continuous turntable rotation. Powerful engine options, plus four-wheel drive and four-wheel steer take you to the work area efficiently, even over rough terrain. And the Z™-boom design provides excellent up and over positioning from 29 ft (8.83 m) on the Z™-80/60 to 75 ft 6 in (23.01 m) on the Z™-135/70.

EXCLUSIVE XCHASSIS™ AXLE DESIGN

The XChassis™ expanding axle revolutionizes the mechanism for extending and retracting the axles to and from the stowed position. It combines outstanding stability with the flexibility for easy transport at a stowed machine width of just 8 ft 1 in (2.46 m) on the Z™-135/70. The Z™-80/60 offers fixed-width axles for convenient transport.

ADVANCED CONTROLS

The ALC 1000 electronic control system provides menu-based adjustments for machine and component calibration as well as on-screen multi-language system diagnostics.



TRACTION FOR IRREGULAR TERRAIN

Four-wheel drive with full-time positive traction handles rough ground conditions to enhance the smoothness of the ride. The full time active oscillating axle on the Z™-80/60 maximizes wheel contact on irregular terrain. Four-wheel steer comes standard on the Z™-135/70, with front wheel, rear wheel, crab and coordinated steer options available to provide additional maneuverability.

POWERFUL ENGINE OPTIONS

Quiet diesel engines like the turbocharged Deutz option give you more power and increased performance at higher altitudes, as well as plenty of torque for superior gradeability and terrainability. Dual fuel options are available on the Z™-80/60.

The Genie® Jib-Extend™ telescoping jib extends from 12 to 20 ft (3.66 to 6.10 m)- providing outstanding reach and up-and-over clearance.

OUTSTANDING REACH AND UP-AND-OVER CLEARANCE

The Jib-Extend™ telescoping jib on the Z™-135/70 model extends from 12 to 20 ft (3.66 to 6.10 m) and provides a 110° vertical range of motion to reach “up, over and in” applications inaccessible by a traditional jib. The Z™-80/60 has an innovative reverse-articulating secondary boom for 29 ft (8.83 m) of up and over reach with zero front arm swing.

GENIE FAST MAST™ SYSTEM

The Genie Fast Mast™ system allows you to lower the platform to the ground without having to lower the secondary boom — so operators can ascend and descend quickly and efficiently. In addition, this timesaving design raises both primary and secondary booms simultaneously to help the operator reach full elevation fast and maximize productivity.



QUICK, FLEXIBLE POSITIONING

Both models have 360° continuous rotation turntables for fast, easy positioning. The platform also hydraulically rotates a full 160° and stays level throughout the entire range of motion. Choose 6- or 8-ft (1.83 or 2.44 m) front-entry platforms with 500 to 600 lbs (227 to 272 kg) of capacity for operators and tools.



ROUGH TERRAIN MODELS AVAILABLE

Z™-80/60

Z™-135/70

OUTSTANDING HORIZONTAL OUTREACH

Telescopic booms offer greater horizontal outreach than any other type of aerial platform — perfect for areas with limited access in construction and industrial applications. Genie® telescopic S™-booms are also designed for productivity with the traction and drive speed you need to get around the job site and to the work area. These models reach out horizontally between 31 ft 8 in (9.65 m) and 77 ft 5 in (23.60 m), with working heights of 46 ft (14.20 m) to 91 ft (27.90 m).

GREAT FOR TIGHT SPACES

The 360° continuous rotation turntable rotates full circle for quick and flexible positioning. Minimal tailswing allows you to maneuver in tight work spaces.

DUAL-FUEL ENGINE OPTIONS

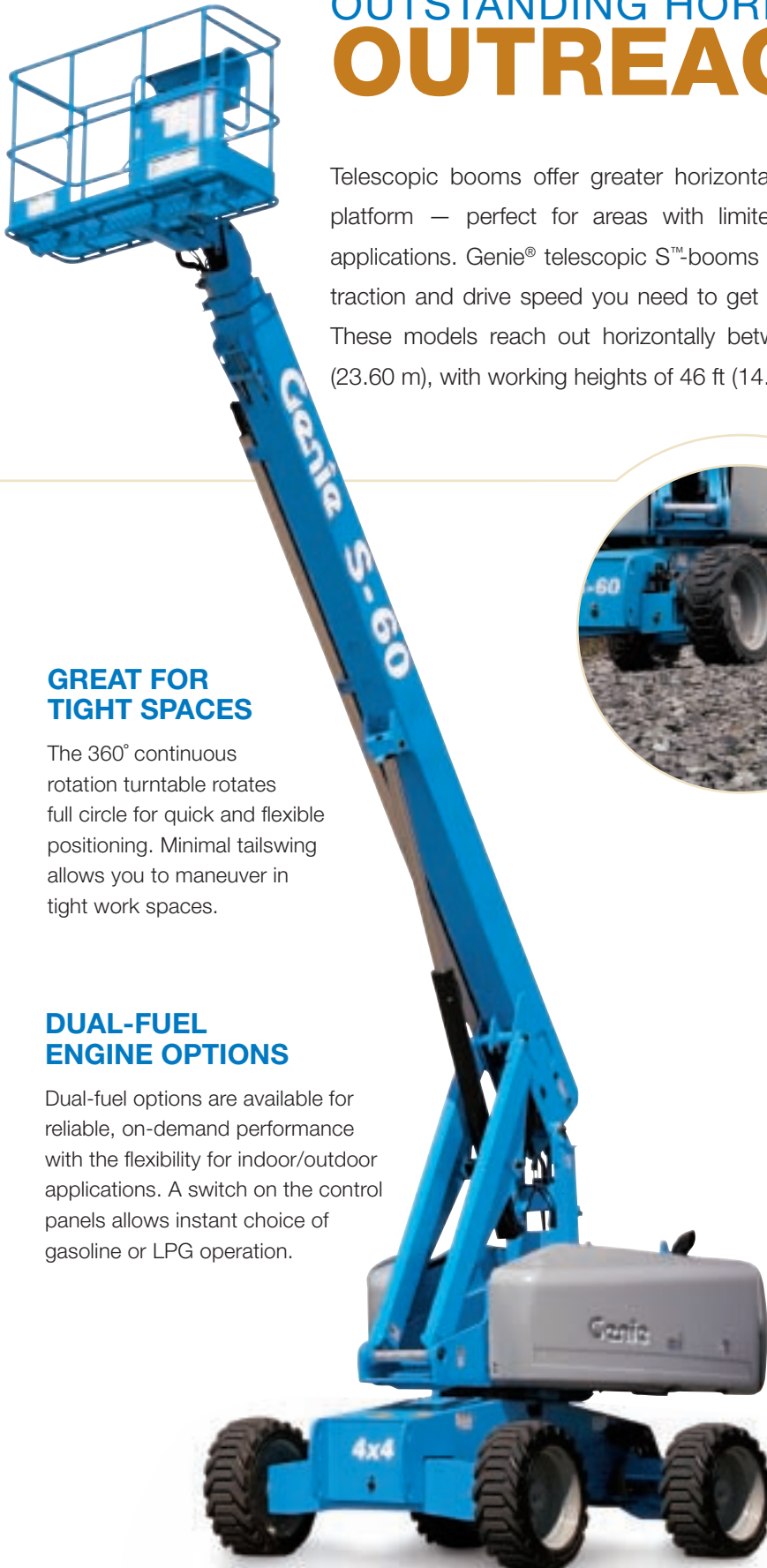
Dual-fuel options are available for reliable, on-demand performance with the flexibility for indoor/outdoor applications. A switch on the control panels allows instant choice of gasoline or LPG operation.



OUTSTANDING TERRAINABILITY

A revolutionary patented system automatically senses the terrain and adjusts the axle position based on ground conditions. Positive traction drive maintains equal power to all drive wheels, even if one wheel loses traction in mud, snow or sand. And two- or four-wheel drive options make it easy to drive up loading ramps for transport.

Genie's revolutionary patented active oscillation system automatically senses the terrain and adjusts the axle position based on ground conditions.





SUPERIOR REACH AND POSITIONING

Exceptional horizontal outreach and a rotating, self-leveling platform allow precise positioning exactly where you need to work. For added flexibility, the articulating jib boom option gives you an extra 5 ft (1.52 m) of horizontal or vertical reach and 135° of working range.

INDUSTRY-LEADING CAPACITY

Increase productivity with the high-capacity S™-60 HC. Its three-person capacity platform holds 750 lbs (340 kg) at the maximum horizontal outreach of 50 ft 10 in (15.48 m) or 1,250 lbs (567 kg) up to 40 ft 8 in (12.39 m). Built-in platform load and position sensing provides automatic active envelope control and peace of mind. The Genie S™-60 and S™-80 models also offer an optional 750 lb (340 kg) capacity configuration with unrestricted outreach of 50 ft 10 in (15.48 m) on the S™-60 and 72 ft 5 in (22.07 m) on the S™-80.



MAXIMIZE PRODUCTIVITY YEAR-ROUND

Featuring a fixed, four-point track system, the S™-60 Trax and S™-65 Trax models allow operators to maneuver in a diverse range of conditions. The rubber tracks provide increased flotation and traction for traveling in mud, sand, snow, gravel, in wet or rough terrain environments, and even on sensitive outdoor surfaces. Because the new Trax models are fixed with four independent tracks, they steer like a wheeled machine to allow maneuvering close to walls and foundations. Plus, each track flexes 23° up and down for a smooth ride during operation and travel. Thanks to a machine width of 8 ft 6 in, Trax models can be transported without over-width permits.

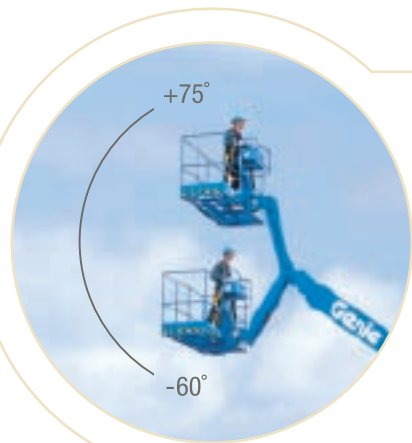


ENGINE-POWERED MODELS AVAILABLE

- S™-40
- S™-45
- S™-60
- S™-60 TRAX
- S™-60 HC
- S™-65
- S™-65 TRAX
- S™-80
- S™-85

POWER AND TERRAINABILITY

Genie® Super Booms™ combine maximum reach with exceptional maneuverability. They feature rugged diesel engine options, four-wheel drive and four-wheel steer capabilities, and foam-filled rough terrain tires to quickly position you where you need to work. With horizontal outreach between 75 ft (22.86 m) and 80 ft (24.38 m) and working heights of 106 ft (32.48 m) to 131 ft 2 in (40.15 m), these machines set performance and operation standards for other booms on the market.



EXTRA WORKING RANGE

The out-and-up articulating jib boom option gives you an additional 5 ft (1.52 m) of horizontal reach and height plus 135° of working range.

GREAT FOR TIGHT SPACES

The 360° continuous rotation turntable swings full circle for quick and flexible positioning. Minimal tailswing allows you to maneuver in tight workspaces.

DIESEL ENGINE OPTIONS

These models feature quiet diesel engines for more power and increased performance, even at high altitudes. Choose from three diesel engine options on these models: Deutz 74 hp (55 kW), Perkins 83 hp (62 kW) or Cummins 80 hp (60 kW).

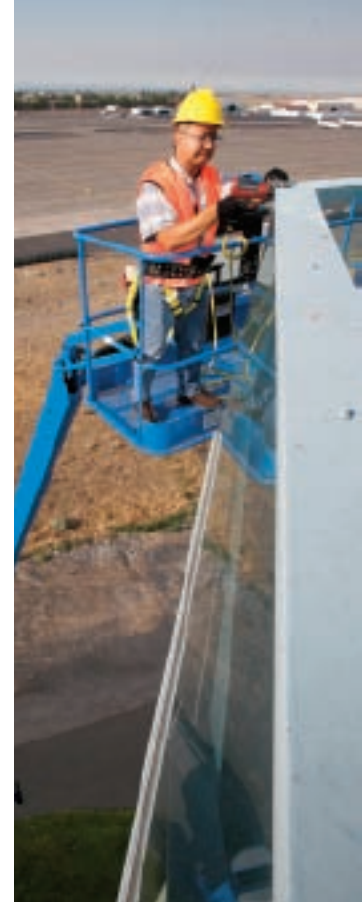


The horizontal outreach of the Genie® Super Boom™ line is among the industry's best at 75 to 80 ft (22.86 to 24.38 m), depending on the model.



PRECISE PLATFORM POSITIONING

Standard 8 ft (2.44 m) front-entry platforms can be rotated to exactly where you need to work and are self-leveling throughout the range of motion.



OUTSTANDING TERRAINABILITY

Models S™-100 and up come standard with four-wheel drive and four-wheel steer to meet the demands of rugged outdoor use. They also feature rough-terrain foam-filled tires for maximum terrainability, traction and durability. Extendable axles allow you to extend or retract axles from the platform while driving for stability, ease of operation and convenient transport.

ENGINE-POWERED MODELS AVAILABLE

S™-100

S™-105

S™-120

S™-125



CUSTOMIZE YOUR BOOM

FOR SPECIFIC JOB SITE NEEDS



AUXILIARY TOP RAILING



PIPE CRADLE

PLATFORMS

Choose from 4, 5, 6 and 8 ft (1.22, 1.52, 1.83 and 2.44 m) steel platforms. Other options include a swing gate that replaces the standard sliding mid-rail for walk-in access to the platform, an auxiliary top rail, and a tri-entry configuration. Available on both 6 and 8 ft (1.83 and 2.44 m) platforms, the tri-entry option provides sliding midrail entries on both ends of the platform as well as the front of the platform.

PLATFORM ACCESSORIES INCLUDE:

Auxiliary Top Railing	Half-Height Mesh
Plate Glass and Panel Cradle Package	Pipe Cradle
Platform Control Box Cover	Platform Work Lights
Air Line to Platform	Tool Tray
Fluorescent Tube Caddy	Rocker Steer Joystick
Welder Leads	
Travel Alarms and Flashing Beacon	

POWER

WELDER PACKAGE

The ARC Pro 275 heavy-duty welder package is powered by a hydraulically driven 208V AC 3-phase generator driven by a closed-loop hydraulic system. It produces 12,500 continuous and 13,500 peak watts. It is available as a Full Welder Package, including a high quality Lincoln Welder, or as a Welder-Ready Package, without the Lincoln Welder.

GENERATOR

Choose hydraulic-driven or belt-driven generator options that supply power to the platform for operating tools without relying on an outside power source and extension cords.

800 WATT INVERTER*

The inverter converts 48V DC to 120V AC (60 Hz) power to allow the operator to utilize a variety of power tools on the platform while elevated (for DC machines only.)

POWER SYSTEM OPTIONS* INCLUDE:

Battery Charge Indicator	Hydraulic Oil Cooler
Additional LPG Tank and/or LPG Tank with Carrier	Low Voltage Interrupt with Battery Charge Indicator
Second Battery	Cold Weather Package
Diesel Scrubber Muffler	Arctic Package
Spark Arrestor Muffler	



WELDER PACKAGE



GENERATOR



800 WATT INVERTER

DRIVE, STEER AND TRACTION

Choose from two- and four-wheel drive and two- and four-wheel steer options (four-wheel steer not available on all models).

TIRE OPTIONS

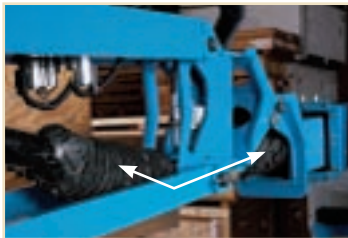
Air-filled: Rough terrain, high flotation, industrial and sealant treated

Foam-filled: Rough terrain and industrial

Non-marking: Standard on solid rubber models (Z™-30, Z™-34 and Z™-40 families). Optional on all air or foam-filled models (except high flotation).



SOLID RUBBER TIRES



HOSTILE ENVIRONMENT PACKAGE

JOB SITE PROTECTION

HOSTILE ENVIRONMENT PACKAGE

The Basic kit includes cylinder bellows, boom wiper seals and a control box cover to protect the most critical boom and chassis areas from loose job site debris. The Deluxe kit adds a center turntable shield, air intake pre-cleaner, cable track protection, and covers for vents and openings, for added protection from loose job site debris in applications such as sandblasting or painting.



AIRCRAFT PROTECTION SYSTEM

AIRCRAFT PROTECTION SYSTEM

The Standard kit includes a motion-shutoff, proximity-sensing mechanism under the platform to help protect sensitive surfaces from damage. The Deluxe kit adds high-visibility, dense foam padding on the railings for additional protection. Platform capacity is downgraded to 440 lbs (200 kg).

ENGINE

ENGINE OPTIONS

Gasoline/LPG engine options include Ford, Kubota and Continental. Diesel engine options include Deutz, Perkins, Kubota or Cummins. (Engine options depend on model.)

COLD WEATHER PACKAGE

Components vary depending on engine, but include synthetic engine oil, 110V battery blanket and more. See sale representative for additional details.

ARCTIC PACKAGE

Includes all the components of the Cold Weather Package plus arctic hoses (mast and select drive hoses), platform control board heater, and oversized foot switch cover.

ADDITIONAL OPTIONS

CHASSIS

Driving lights are available.

TOW PACKAGE

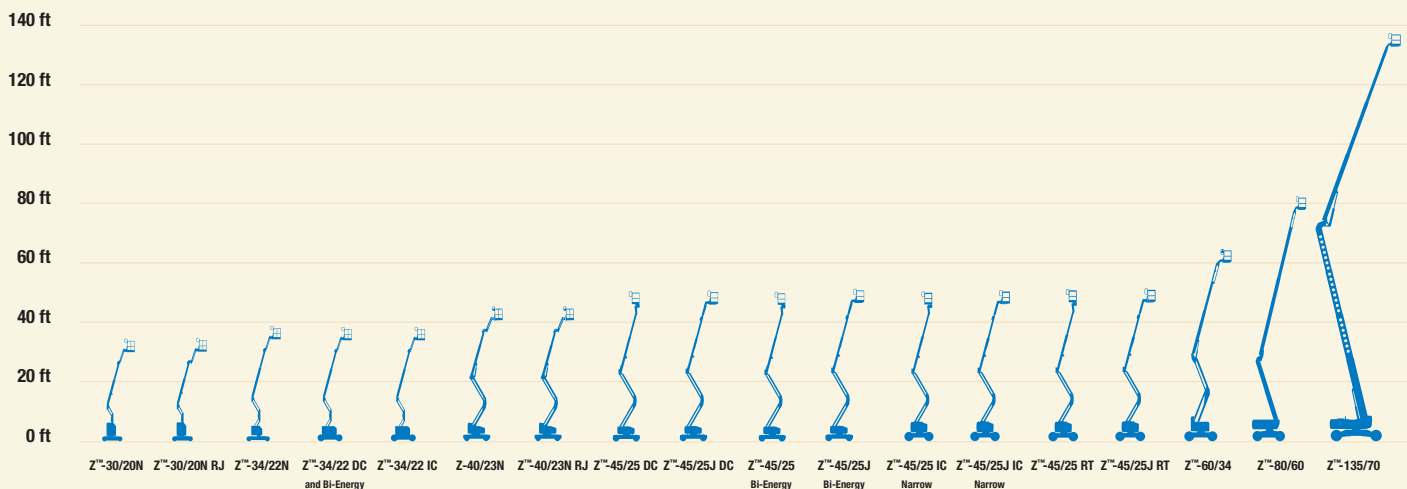
Allows the machine to be towed by another vehicle (the machine does not have use of its brakes when being towed and can only be towed at very low speeds). This package includes a tow bar, steering float valve and tow bar storage bracket.

SPECIFICATIONS

ARTICULATING Z™-BOOMS

MODEL	WORKING HEIGHT		WIDTH		HORIZONTAL REACH		UP & OVER CLEARANCE		LIFT CAPACITY	
	US	Metric	US	Metric	US	Metric	US	Metric	US	Metric
NARROW ARTICULATING Z™-BOOMS										
Z™-30/20N	36 ft	11.14 m	3 ft 11 in	1.19 m	21 ft 5 in	6.53 m	12 ft 8 in	3.86 m	500 lbs	227 kg
Z™-30/20N RJ	35 ft 2 in	10.89 m	3 ft 11 in	1.19 m	20 ft 6 in	6.25 m	12 ft 8 in	3.86 m	500 lbs	227 kg
Z™-34/22N	40 ft 6 in	12.52 m	4 ft 10 in	1.47 m	22 ft 3 in	6.78 m	15 ft 2 in	4.62 m	500 lbs	227 kg
Z™-40/23N	46 ft 5 in	14.32 m	4 ft 11 in	1.50 m	22 ft 8 in	6.91 m	21 ft 3 in	6.48 m	500 lbs	227 kg
Z™-40/23N RJ	46 ft 5 in	14.32 m	4 ft 11 in	1.50 m	22 ft 8 in	6.91 m	21 ft 3 in	6.48 m	500 lbs	227 kg
DC AND BI-ENERGY ARTICULATING Z™-BOOMS										
Z™-34/22 DC	40 ft 6 in	12.52 m	5 ft 8 in	1.73 m	22 ft 3 in	6.78 m	15 ft	4.57 m	500 lbs	227 kg
Z™-34/22 BI-ENERGY	40 ft 6 in	12.52 m	5 ft 8 in	1.73 m	22 ft 3 in	6.78 m	15 ft	4.57 m	500 lbs	227 kg
Z™-45/25 DC	51 ft 6 in	15.87 m	5 ft 10.3 in	1.79 m	25 ft	7.62 m	23 ft 1 in	7.04 m	500 lbs	227 kg
Z™-45/25J DC	51 ft 8 in	15.92 m	5 ft 10.3 in	1.79 m	25 ft 1 in	7.65 m	22 ft 1 in	6.73 m	500 lbs	227 kg
Z™-45/25 BI-ENERGY	51 ft 6 in	15.87 m	5 ft 10.3 in	1.79 m	25 ft	7.62 m	23 ft 1 in	7.04 m	500 lbs	227 kg
Z™-45/25J BI-ENERGY	51 ft 8 in	15.92 m	5 ft 10.3 in	1.79 m	25 ft 1 in	7.65 m	22 ft 1 in	6.73 m	500 lbs	227 kg
ENGINE-POWERED ARTICULATING Z™-BOOMS										
Z™-34/22 IC (2 WD)	40 ft 6 in	12.52 m	5 ft 8 in	1.73 m	22 ft 3 in	6.78 m	14 ft 11 in	4.55 m	500 lbs	227 kg
Z™-34/22 IC (4 WD)	40 ft 10 in	12.62 m	6 ft 1 in	1.85 m	22 ft 3 in	6.78 m	15 ft	4.57 m	500 lbs	227 kg
Z™-45/25 IC NARROW	51 ft 6 in	15.87 m	5 ft 10.3 in	1.79 m	25 ft	7.62 m	23 ft 1 in	7.04 m	500 lbs	227 kg
Z™-45/25J IC NARROW	51 ft 9 in	15.94 m	5 ft 10.3 in	1.79 m	25 ft 1 in	7.65 m	22 ft 1 in	6.73 m	500 lbs	227 kg
Z™-45/25 RT	51 ft 11 in	16.00 m	7 ft 6 in	2.29 m	25 ft	7.62 m	23 ft 6 in	7.16 m	500 lbs	227 kg
Z™-45/25J RT	52 ft 2 in	16.07 m	7 ft 6 in	2.29 m	25 ft 1 in	7.65 m	23 ft 6 in	7.16 m	500 lbs	227 kg
Z™-60/34	66 ft 4 in	20.39 m	8 ft 1 in	2.46 m	36 ft 3 in	11.05 m	27 ft	8.23 m	500 lbs	227 kg
Z™-80/60	84 ft	25.77 m	8 ft 2 in	2.49 m	60 ft	18.29 m	29 ft	8.83 m	500 lbs	227 kg
Z™-135/70	141 ft	43.15 m	8 ft 1 in*	2.46 m*	69 ft 9 in	21.26 m	75 ft 6 in	23.01 m	600 lbs	272 kg

*Axles retracted



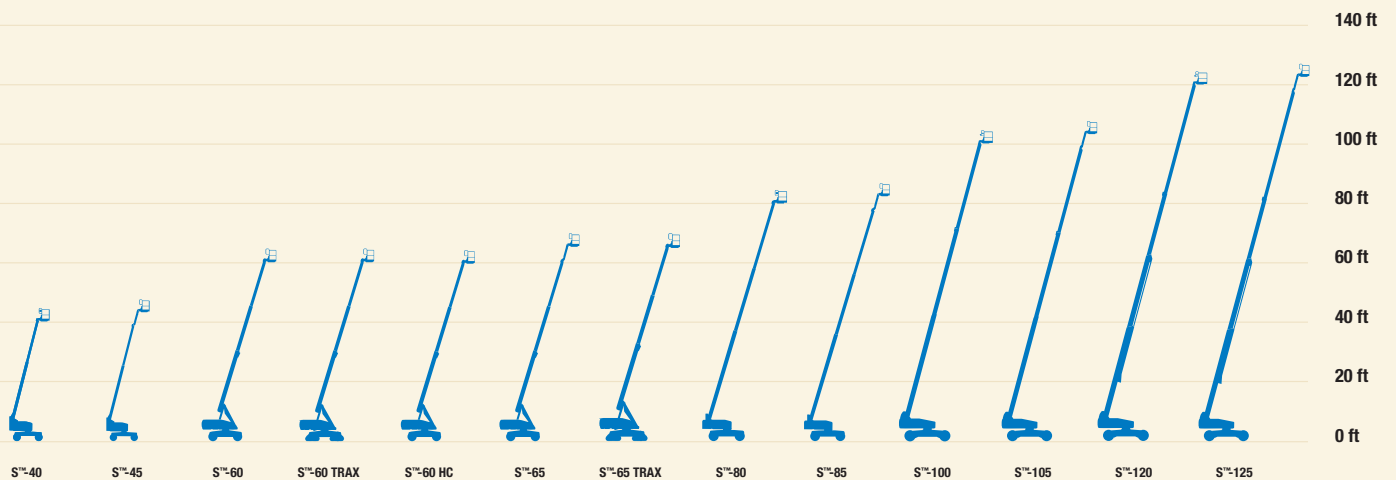
SPECIFICATIONS

TELESCOPIC S™-BOOMS

MODEL	WORKING HEIGHT		WIDTH		HORIZONTAL REACH		LIFT CAPACITY	
	US	Metric	US	Metric	US	Metric	US	Metric
STICK TELESCOPIC S™-BOOMS								
S™-40	46 ft	14.20 m	7 ft 6 in	2.30 m	31 ft 8 in	9.65 m	500 lbs	227 kg
S™-45	51 ft	15.72 m	7 ft 6 in	2.30 m	36 ft 8 in	11.18 m	500 lbs	227 kg
S™-60	66 ft	20.30 m	8 ft 2 in	2.49 m	50 ft 10 in	15.48 m	500 lbs	227 kg
S™-60 TRAX	66 ft 2 in	20.34 m	8 ft 6 in	2.59 m	50 ft 10 in	15.48 m	500 lbs	227 kg
S™-60 HC	64 ft 4 in	19.78 m	8 ft 2 in	2.49 m	50 ft 10 in	15.48 m	750/1,250 lbs**	340/567 kg**
S™-65	71 ft	21.80 m	8 ft 2 in	2.49 m	56 ft 2 in	17.10 m	500 lbs	227 kg
S™-65 TRAX	71 ft 2 in	21.86 m	8 ft 6 in	2.59 m	56 ft 2 in	17.10 m	500 lbs	227 kg
S™-80	86 ft	26.38 m	8 ft*	2.44 m*	72 ft 5 in	22.07 m	500 lbs	227 kg
S™-85	91 ft	27.90 m	8 ft*	2.44 m*	77 ft 5 in	23.60 m	500 lbs	227 kg
SUPER TELESCOPIC S™-BOOMS								
S™-100	106 ft	32.48 m	8 ft 2 in*	2.49 m*	75 ft	22.86 m	750 lbs	340 kg
S™-105	111 ft	34.00 m	8 ft 2 in*	2.49 m*	80 ft	24.38 m	500 lbs	227 kg
S™-120	126 ft	38.58 m	8 ft 2 in*	2.49 m*	75 ft	22.86 m	750 lbs	340 kg
S™-125	131 ft 2 in	40.15 m	8 ft 2 in*	2.49 m*	80 ft	24.38 m	500 lbs	227 kg

* Axles retracted

** Maximum outreach zone / maximum capacity zone





GENIE HAS YOU COVERED



www.genieindustries.com

GENIE CORPORATE HEADQUARTERS

18340 NE 76th Street, P.O. Box 97030, Redmond, Washington 98073-9730
Telephone **+1 (425) 881-1800** • Toll Free in USA/Canada **+1 (800) 536-1800** • Fax +1 (425) 883-3475

WORLDWIDE MANUFACTURING AND DISTRIBUTION

Australia • Brazil • Caribbean • Central America • China • France • Germany • Italy • Japan • Korea • Mexico
Southeast Asia • Spain • Sweden • United Arab Emirates • United Kingdom • United States

Effective Date: July, 2008. Product specifications and prices are subject to change without notice or obligation. The photographs and/or drawings in this document are for illustrative purposes only. Refer to the appropriate Operator's Manual for instructions on the proper use of this equipment. Failure to follow the appropriate Operator's Manual when using our equipment or to otherwise act irresponsibly may result in serious injury or death. The only warranty applicable to our equipment is the standard written warranty applicable to the particular product and sale and we make no other warranty, express or implied. Products and services listed may be trademarks, service marks or trade-names of Terex Corporation, Genie Industries, Inc. and/or their subsidiaries in the U.S.A. and many other countries. All rights are reserved. Terex® is a Registered Trademark of Terex Corporation in the U.S.A. and many other countries. Genie® is a Registered Trademark of Genie Industries, Inc. in the U.S.A. and many other countries. Genie is a Terex Company. © 2008 Terex Corporation. Boom Family 5K 0708L. Part No. 109301.