



Revolutionary New Heat Spreading Technology

- Thaws Faster
- Cures Harder
- Heats Evenly

HEATING INNOVATION:

Flatwork Technology's patented powerblanket brand of electrically heated exterior blankets are the ideal heat solution for ground thaw, concrete cure and most cold weather construction needs.

The powerblanket is the revolutionary heating blanket. With our patented heat spreading technology, it is finally possible to achieve an even, consistent directional heat. Using only 120V or 12V, it's the most efficient and energy saving solution on the market today. The powerblanket is lightweight and durable, requiring virtually no maintenance, saving time, money & labor.



CONCRETE CURING:

Powerblanket provides the ideal environment for most concrete curing applications. It's innovative directional heat design spreads heat evenly across the surface, maintaining the optimal cure temperatures of 60-70 degrees.

POWERBLANKET ADDS AND MAINTAINS HEAT THROUGHOUT THE ENTIRE CURING PROCESS REDUCING CURE TIME.

Achieve recommended psi strength earlier than conventional methods.

18 MILL RIP STOP VINYL

Durable, UV protected and tear resistant.
Holds up in extreme cold conditions (down to -20 F)

MAINTAINS MOISTURE IN THE CONCRETE

Prevents rapid drying, which helps to reduce cracking.

LIGHTWEIGHT

Easy for one person to transport and set up.
No heavy machinery required.

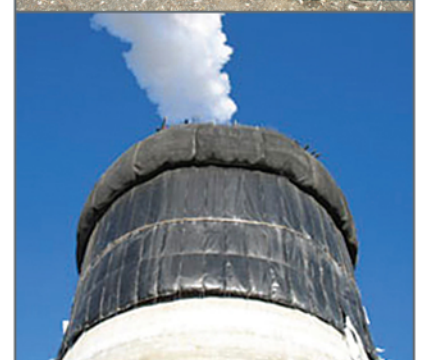
120 VOLT

Low energy consumption compared to conventional heating methods.
240 Volt single phase units available upon request.

WATER RESISTANT

REDUCES STAINING OR DISCOLORING OF CONCRETE

PLUG MULTIPLE BLANKETS TOGETHER ON THE SAME CIRCUIT



For More Information
Call Toll Free:
(877) 927-6432

Distributed By:



1997 South 5070 West

Salt Lake City, Utah 84104

www.flatwork.com

ELECTRICAL SPECIFICATIONS

FLAT BLANKET						
Product Category	Model Number	Size in feet	Voltage	Wattage	Amps	# of Blankets per 20 amp Circuit
Concrete Curing	CC1123	11'x23'	120V	1,197	9.98	2
	CC0625	6'x25'	120V	1,140	9.50	2
Multi-Duty	MD1123	11'x23'	120V	2,400	20.00	1
	MD0625	6'x25'	120V	1,200	10.00	2
	MD1010	10'x10'	120V	1,200	10.00	2
	MD0325	3'x25'	120V	1,140	9.50	2
	MD0404-12V	4'x4'	12V	240	20	N/A
	MD0202-12V	2'x2'	12V	96	8	N/A
Extra-Hot	EH0612	6'x12'	120V	1,750	14.58	1
	EH0409	4'x9'	120V	1,300	10.90	2
	EH0405	4'x5'	120V	310	2.60	8
	EH0202	2'x2'	120V	90	0.75	20

BARRELL, BUCKET, TOTE & HOT BOX						
Product Category	Model Number	Size in Gallons	Voltage	Wattage	Amps	# of Blankets per 20amp Circuit
55 Gallon Drum	BH55-90	55gal 90°	120V	400	3.33	5
	BH55-110	55gal 110°	120V	400	3.33	5
	BH55-130	55gal 130°	120V	522	4.35	4
	BH55-160	55gal 160°	120V	522	4.35	4
	BH55-M	55gal (Mason)	120V	1,140	10.00	2
30 Gallon Drum	BH30-90	30gal 90°	120V	400	3.33	5
	BH30-110	30gal 110°	120V	400	3.33	5
	BH30-130	30gal 130°	120V	400	3.33	5
	BH30-160	30gal 160°	120V	400	3.33	5
	BH30-M	30gal (Mason)	120V	522	4.35	4
5 Gallon Bucket	BH05-90	5gal 90°	120V	90	0.75	20
	BH05-110	5gal 110°	120V	90	0.75	20
	BH05-130	5gal 130°	120V	144	1.20	16
	BH05-160	5gal 160°	120V	144	1.20	16
Tote Heater	TH330	330gal	120V	1,300	10.90	2
	TH275	275gal	120V	1,300	10.90	2