

STARTING WITH
SERIAL #071210077

PARTS LIST MANUAL



SHOWN WITH OPTIONAL PROCART

14" HARDSCAPE SAWS

| SKU NO. | MODEL | POWER OPTION |
|---------|------------|--|
| 28500 | HSS14-6S | SUBARU ROBIN ENGINE EX17D W/ CYCLONE AIR CLEANER |
| 28600 | HSS14-5.5H | HONDA ENGINE GX160U1-QXC9 W/ CYCLONE AIR CLEANER |

PARTS FINDER

**Search Website
by Part Number**



**Search Manual
Library For Parts
Manual & Lookup Part
Numbers – Purchase
or Request Quote**

Search Manuals

Enter your information to search for a manual or to purchase a manual or parts.

* Brand:

* Model:

* Serial:

* Part Number:

SEARCH

**Can't Find Part or
Manual? Request Help
by Manufacturer,
Model & Description**

Parts Order Form

Please fill in the following information to request help finding a part or manual.

Manufacturer:

Model:

Description:

Quantity:

Part Number:

Part Name:

Part Description:

Part Category:

Part Location:

Part Status:

Part Condition:

Part Material:

Part Color:

Part Weight:

Part Dimensions:

Part Price:

Part Availability:

Part Lead Time:

Part Notes:

Submit

Discount-Equipment.com is your online resource for quality parts & equipment.

Florida: **561-964-4949** Outside Florida TOLL FREE: **877-690-3101**

Need parts?

Click on this link: <http://www.discount-equipment.com/category/5443-parts/> and choose one of the options to help get the right parts and equipment you are looking for. Please have the machine model and serial number available in order to help us get you the correct parts. If you don't find the part on the website or on one of the online manuals, please fill out the request form and one of our experienced staff members will get back to you with a quote for the right part that your machine needs.

We sell worldwide for the brands: Genie, Terex, JLG, MultiQuip, Mikasa, Essick, Whiteman, Mayco, Toro Stone, Diamond Products, Generac Magnum, Airman, Haulotte, Barreto, Power Blanket, Nifty Lift, Atlas Copco, Chicago Pneumatic, Allmand, Miller Curber, Skyjack, Lull, Skytrak, Tsurumi, Husquvarna Target, Stow, Wacker, Sakai, Mi-T-M, Sullair, Basic, Dynapac, MBW, Weber, Bartell, Bennar Newman, Haulotte, Ditch Runner, Menegotti, Morrison, Contec, Buddy, Crown, Edco, Wyco, Bomag, Laymor, EZ Trench, Bil-Jax, F.S. Curtis, Gehl Pavers, Heli, Honda, ICS/PowerGrit, IHI, Partner, Imer, Clipper, MMD, Koshin, Rice, CH&E, General Equipment, Amida, Coleman, NAC, Gradall, Square Shooter, Kent, Stanley, Tamco, Toku, Hatz, Kohler, Robin, Wisconsin, Northrock, Oztec, Toker TK, Rol-Air, APT, Wylie, Ingersoll Rand / Doosan, Innovatech, Con X, Ammann, Mecalac, Makinex, Smith Surface Prep, Small Line, Wanco, Yanmar

READ AND UNDERSTAND THE OPERATORS INSTRUCTION MANUAL THOROUGHLY BEFORE ATTEMPTING TO OPERATE THIS EQUIPMENT. Death or serious injury could occur if this machine is used improperly.



SAFETY MESSAGES



The safety instructions are preceded by a graphic alert message of DANGER, WARNING, or CAUTION.



Indicates an imminent hazard which, if not avoided, will result in death or serious injury.



Indicates an imminent hazard which, if not avoided, can result in death or serious injury.



Indicates hazards which, if not avoided, could result in serious injury and or damage to the equipment.

GASOLINE Powered Equipment



- Do not operate gasoline powered equipment without adequate ventilation. Carbon monoxide is an invisible, odorless gas that can kill.

ELECTRICAL Powered Equipment



- ELECTRICAL HAZARD** - Be sure equipment is properly grounded. Failure to comply could kill or result in serious injury.



The engine exhaust from this product contains chemicals known to the State of California to cause cancer, birth defects or other reproductive harm.

GENERAL INSTRUCTIONS



- You must read and understand the operators instruction manual and all other manuals associated with this machine. For your safety and the safety of others around you, it is extremely important to fully understand how to operate this machine in the way it was intended. Different model machines or older/newer versions of the same model may have different parts and controls that you need to understand. If instructions are not readable or available DO NOT USE this machine and contact Discount-equipment for a replacement Manual.
- You must be able to physically handle the bulk weight and power of this machine. If not properly controlled this machine can cause death or serious injury.
- Do not operate this machine in an impaired mental state. You must be able to exercise good judgement and reactions to maintain a safe working environment.
- This is a "one person" machine which means only one operator can be operating the machine at any one time. For the safety of others, maintain a safe operating distance to other personnel. Your work area should be defined and appropriately marked so bystanders and coworkers do not stand or walk near this machine and end up seriously injured by flying debris or exposing them to harmful noise or dust.
- This equipment is for Commercial use. Although this is a "one person" machine your work team should understand how to shut this machine off and quickly get medical help if an accident strikes the operator.
- Keep all guards in place during operation. The guards are to provide protection from inadvertent contact with dangerous moving parts, pinch points, or hot surfaces.
- Wear appropriate Personal Protective Equipment (PPE) including safety glasses, safety boots, work gloves, respiratory protection, hearing protection, and head protection. Do not wear loose clothing that can get tangled in moving parts. Failure to do so could result

in dismemberment or death. **Wear an approved respirator when removing hazardous materials or when grinding/cutting dry materials. Some dust particles such as concrete dust can contain silicate particles which can cause silicosis (a very serious lung disease). Contact NIOSH or OSHA for further details. When wet grinding/cutting, avoid contact with the concrete/asphalt slurry which can cause serious skin irritations.**

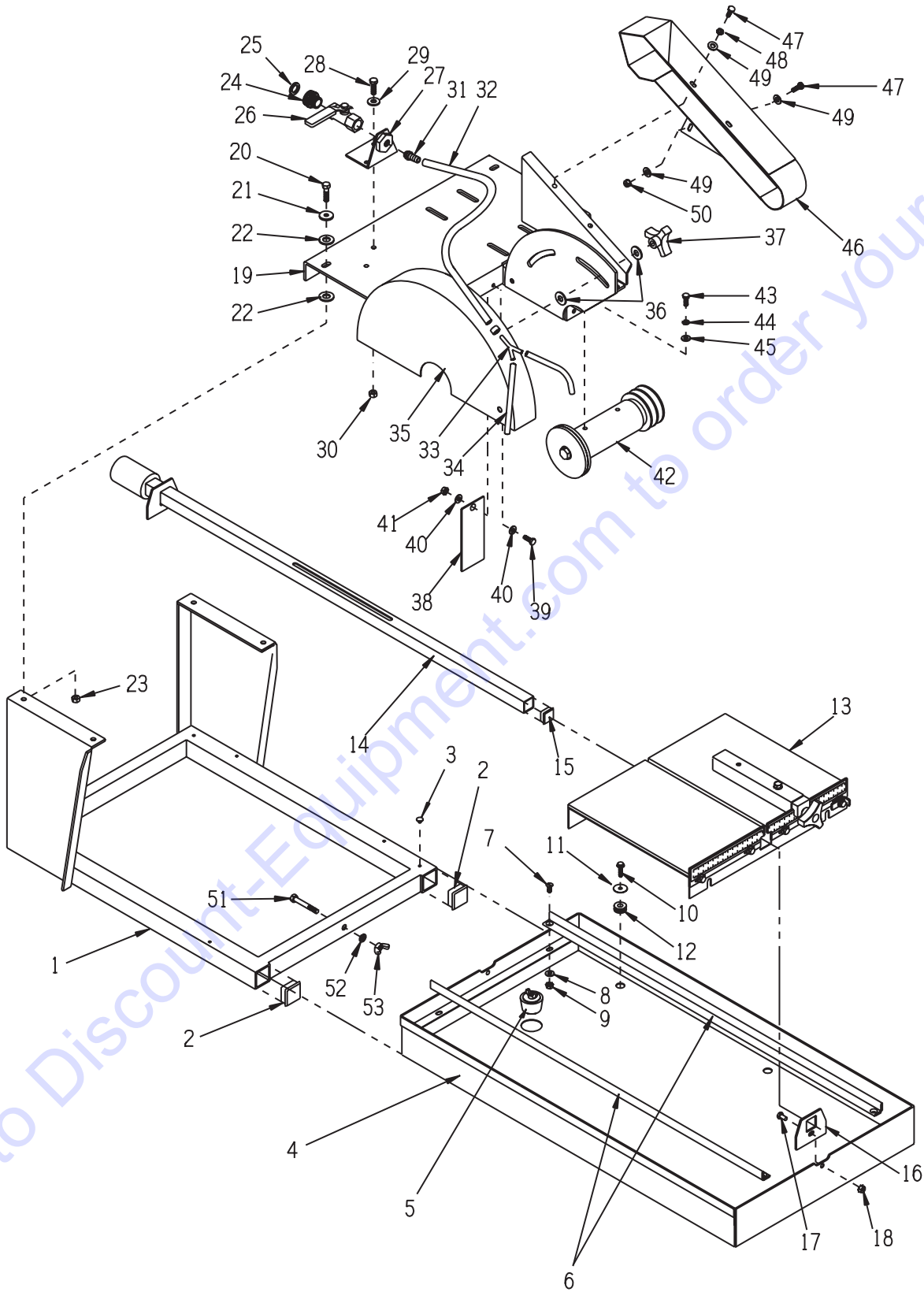
- You must maintain this machine per the maintenance schedule in the operator manual. Remember before adjusting, servicing, or fueling this machine, disconnect the source of power to the machine by disconnecting the spark plug (Gas models), or by unplugging the electrical power cord (electric models) or air hose (Pneumatic models) AT THE MACHINE so you can assure yourself it remains unplugged while you are working on it. Do not modify this machine. Use only genuine EDCO parts and accessories. Repairs and service should be performed by approved EDCO dealers or authorized technicians.
- You should look carefully around the area before you begin work so you can identify potential hazards such as deck inserts, pipes, columns, openings, electrical cords or outlets, or any other objects protruding from the slab surface.
- This machine has no brain so you must use your own. There is no substitute for safety. The safety decals on the machine are to serve as a reminder for information you must already know before you begin using this machine. Take a moment to reread the safety decals each time you use the machine. If your machine is missing any decals, contact Discount-equipment for a replacement.

PARTS LIST MANUAL

MODEL HSS14 14" HARDSCAPE SAW

| <u>Section</u> | <u>Page Number</u> |
|--|--------------------|
| Safety Messages and General Instructions | 2 |
| How To Order Replacement Parts | 3 |
| Illustration 1: Main Grouping | 4,5 |
| Illustration 2: Rolling Table Assembly | 6 |
| Illustration 3: Arbor Assembly | 7 |
| Illustration 4: Engine Grouping | 8 |
| Illustration 5: Optional Drain Assembly | 9 |
| Illustration 6: Optional ProCart | 10 |
| Illustration 7: Optional Folding Stand | 11 |
| Limited Equipment Warranty of Sale | Back Page |

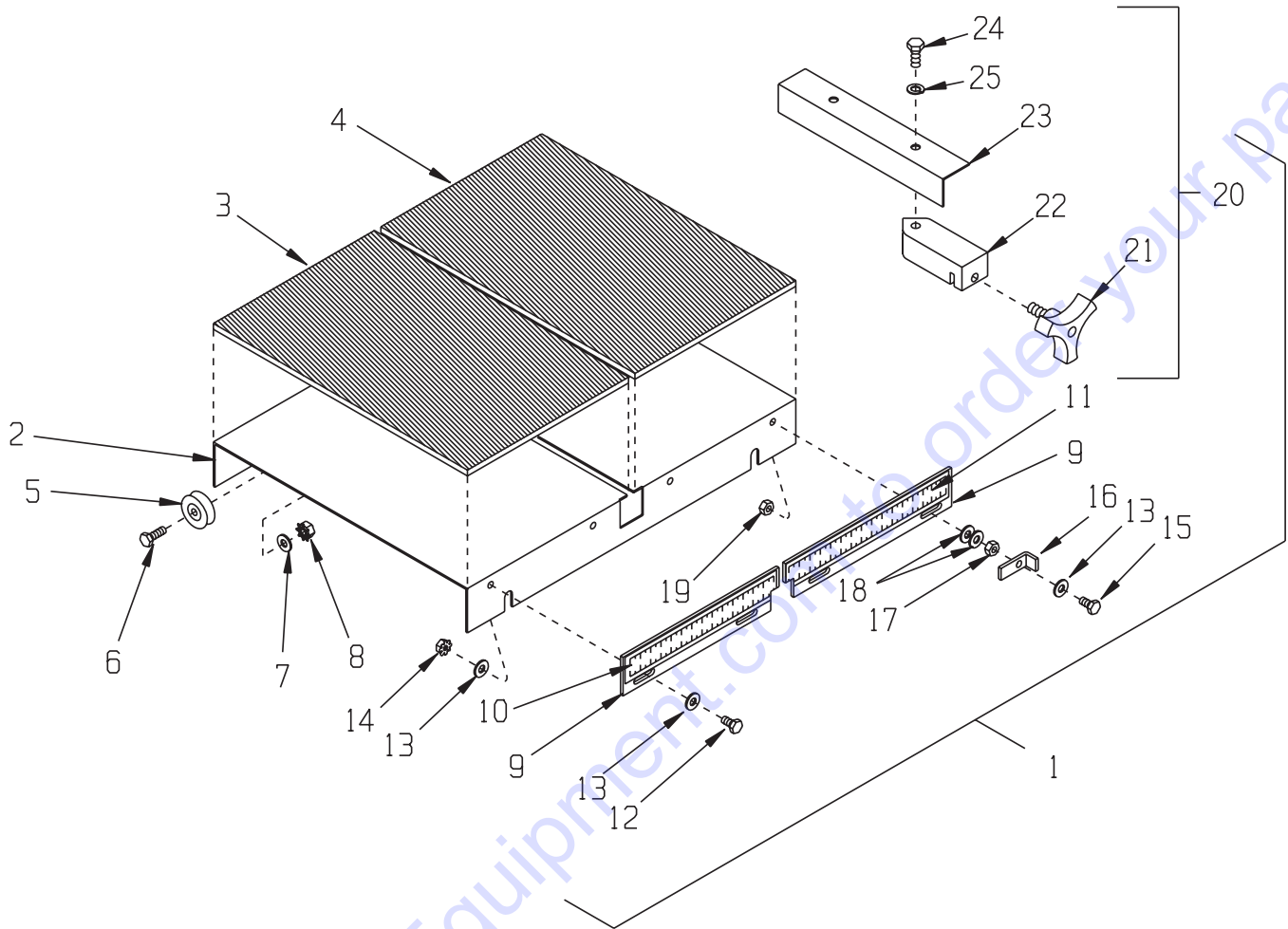
ILLUSTRATION 1 : MAIN GROUPING



PARTS LISTING - ILLUSTRATION 1: MAIN GROUPING

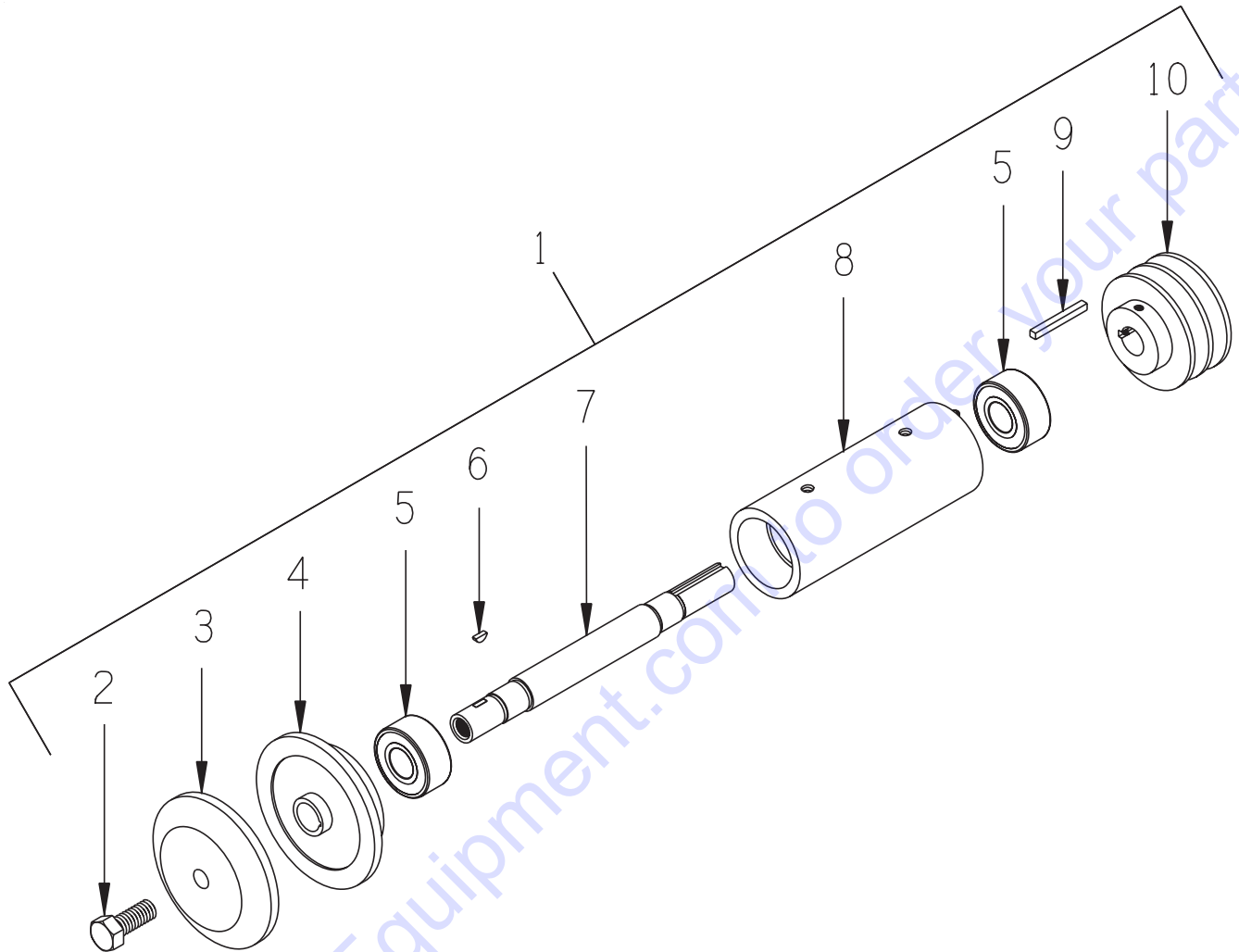
| ITEM # | PART # | DESCRIPTION | QTY. | ITEM # | PART # | DESCRIPTION | QTY. |
|--------|--------|---|------|--------|--------|--|------|
| 1 | 42301 | MAIN FRAME | 1 | 27 | 42310 | BRACKET, WATER VALVE, HSS-14 | 1 |
| 2 | 42148 | PLUG, SQ. TUBE 1-1/2 X 11 GA., BLK | 2 | 28 | 10053 | SCREW, CAP 5/16-18 X 3/4 | 2 |
| 3 | 42127 | RIVET, NYLON PUSH-IN PANEL | 4 | 29 | 10213 | WASHER, FLAT 5/16 SAE | 2 |
| 4 | 42303 | PAN, HSS-14 | 1 | 30 | 10807 | NUT, LOCK 5/16-18 | 2 |
| 5 | 40378 | STOPPER ASSEMBLY 1-1/2" | 1 | 31 | 42312 | BARB, 5/16HOSE X 1/4MPT | 1 |
| 6 | 42304 | TRACK RAIL 36-3/4"L, HSS-14 | 2 | 32 | 42313 | HOSE 1/4"ID X 24"L, HSS-14 | 1 |
| 7 | 11540 | SCREW, FLAT HD SLT 1/4-20 X 5/8 | 4 | 33 | 99323 | BARBED FITTING, "Y" 1/4"HOSE | 1 |
| 8 | 10602 | WASHER, FLAT 1/4 SAE | 4 | 34 | 42314 | HOSE 1/4"ID X 6"L, HSS-14 | 2 |
| 9 | 10861 | NUT, KEPS 1/4-20 | 4 | 35 | 42305 | GUARD, BLADE 14", HSS-14 | 1 |
| 10 | 42308 | SCREW, SDHW 1/4 X 1 S.S. | 4 | 36 | 10025 | WASHER, FLAT 3/8 SAE | 4 |
| 11 | 42309 | WASHER, FENDER 1/4 X 1"OD (S.S.) | 4 | 37 | 80011 | KNOB, 3-PRONG W/ 3/8-16 THD. | 2 |
| 12 | 57148 | GROMMET 3/8ID X 1/8GRV. X 5/8GD | 4 | 38 | 40012 | FLAP, SPLASH 2-1/2 X 7 | 1 |
| 13 | 42315 | TABLE COMPLETE, ROLLING, HSS-14 (REFER TO ILLUS. 2 FOR BREAKDOWN) | 1 | 39 | 10018 | SCREW, CAP 1/4-20 X 3/4 | 1 |
| 14 | 42307 | VACUUM PORT TUBE, HSS-14 | 1 | 40 | 10602 | WASHER, FLAT 1/4 SAE | 2 |
| 15 | 51078 | PLUG, SQ. TUBE 1 X 14 GA., BLACK | 1 | 41 | 10861 | NUT, KEPS 1/4-20 | 1 |
| 16 | 42229 | MOUNTING BRKT., VACUUM PORT TUBE | 1 | 42 | 40056 | ARBOR ASSY. W/ SHEAVE, 14" SAWS (REFER TO ILLUS. 3 FOR BREAKDOWN) | 1 |
| 17 | 10834 | SCREW, CAP 1/4-20 X 1/2 | 2 | 43 | 10048 | SCREW, CAP 5/16-24 X 3/4 | 4 |
| 18 | 10861 | NUT, KEPS 1/4-20 | 2 | 44 | 10801 | WASHER, LOCK 5/16 | 4 |
| 19 | 42302 | DECK, ENGINE & ARBOR, HSS-14 | 1 | 45 | 10213 | WASHER, FLAT 5/16 SAE | 4 |
| 20 | 10021 | SCREW, CAP 3/8-24 X 1 | 4 | 46 | 42306 | COVER, BELT, HSS-14 | 1 |
| 21 | 10025 | WASHER, FLAT 3/8 SAE | 4 | 47 | 10018 | SCREW, CAP 1/4-20 X 3/4 | 3 |
| 22 | 10312 | WASHER, FLAT 1/2 SAE (USED AS A SHIM WHEN REQ'D. - QTY. 2) | 4 | 48 | 10038 | WASHER, LOCK 1/4 | 2 |
| 23 | 10004 | NUT, LOCK 3/8-24 | 4 | 49 | 10602 | WASHER, FLAT 1/4 SAE | 4 |
| 24 | 80021 | CONN., SWIVEL FEM. 3/4HOSE X 1/2MPT (INCLUDES ITEM 25 - HOSE WASHER) | 1 | 50 | 10861 | NUT, KEPS 1/4-20 | 1 |
| 25 | 10070 | WASHER, HOSE 3/4 | 1 | 51 | 10341 | SCREW, CAP 5/16-18 X 2-1/4 | 1 |
| 26 | 10711 | VALVE, BALL 1/2 FPT | 1 | 52 | 10801 | WASHER, LOCK 5/16 | 1 |
| | | | | 53 | 10902 | NUT, WING 5/16-18 | 1 |

ILLUSTRATION 2: ROLLING TABLE ASSEMBLY



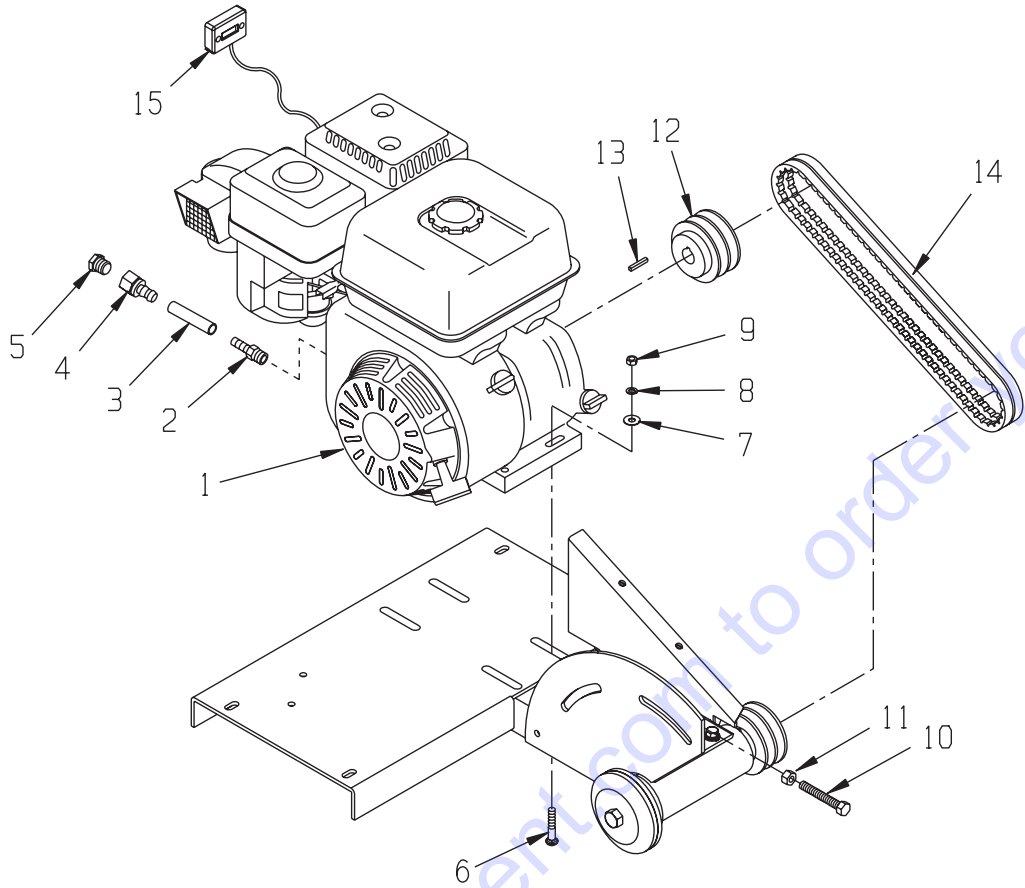
| ITEM # | PART # | DESCRIPTION | QTY. | ITEM # | PART # | DESCRIPTION | QTY. |
|--------|--------|--|------|--------|--------|---|------|
| 1 | 42315 | TABLE COMPLETE, ROLLING, HSS-14 (INCLUDES ITEMS 2 THRU 25) | 1 | 13 | 10602 | WASHER, FLAT 1/4 SAE | 7 |
| 2 | 42226 | TABLE, ROLLING, GMS-10 & HSS-14 | 1 | 14 | 10861 | NUT, KEPS 1/4-20 | 3 |
| 3 | 42222 | RUBBER PAD 12 X 7-1/2 X 3/16 | 1 | 15 | 10031 | SCREW, CAP 1/4-20 X 1 | 1 |
| 4 | 42221 | RUBBER PAD 12 X 8 X 3/16 | 1 | 16 | 42106 | LATCH, ROLLING TABLE | 1 |
| 5 | 14082 | PULLEY BEARING 1-1/4DIA. X 1/4BORE (A.K.A. TRACK WHEEL) | 4 | 17 | 10013 | NUT 1/4-20 | 1 |
| 6 | 10031 | SCREW, CAP 1/4-20 X 1 | 4 | 18 | 11704 | WASHER, FLAT .257 X .624 X .060THK | 2 |
| 7 | 10602 | WASHER, FLAT 1/4 SAE | 4 | 19 | 10015 | NUT, LOCK 1/4-20 | 1 |
| 8 | 10861 | NUT, KEPS 1/4-20 | 4 | 20 | 40689A | GUIDE ASSY., CUT, UNIVERSAL (INCLUDES ITEMS 21 THRU 25) | 1 |
| 9 | 42311 | TABLE FRONT PANEL, HSS-14 (2 PCS.) | 1 | 21 | 40425 | KNOB, 3-PRONG W/ 3/8-16 X 5/8 STUD | 1 |
| 10 | 40423 | RULE, ADHESIVE-BACKED, 1-13, R-L | 1 | 22 | 42015 | BLOCK, CUT GUIDE, MASONRY SAW | 1 |
| 11 | 40424 | RULE, ADHESIVE-BACKED, 1-7, L-R | 1 | 23 | 40689 | BRACKET, CUT GUIDE, UNIVERSAL | 1 |
| 12 | 10018 | SCREW, CAP 1/4-20 X 3/4 | 3 | 24 | 10053 | SCREW, CAP 5/16-18 X 3/4 | 1 |
| | | | | 25 | 10801 | WASHER, LOCK 5/16 | 1 |

ILLUSTRATION 3: ARBOR ASSEMBLY



| ITEM # | PART # | DESCRIPTION | QTY. |
|--------|--------|---|------|
| 1 | 40056 | ARBOR ASSY. W/ SHEAVE (INCLUDES ITEMS 2 - 10) | 1 |
| 2 | 10321 | SCREW, CAP 1/2-20 X 1-1/4 | 1 |
| 3 | 40023 | ARBOR BLADE CAP 4", MASONRY SAW | 1 |
| 4 | 40022 | ARBOR BACKING PLATE 4", MASONRY SAW | 1 |
| 5 | 40018 | BEARING, RADIAL BALL 20X47X20.6MM | 2 |
| 6 | 40036 | KEY, WOODRUFF 1/8 X 3/8 (#403) | 1 |
| 7 | 40021 | ARBOR SHAFT 8-7/8"L | 1 |
| 8 | 40020 | ARBOR HOUSING | 1 |
| 9 | 10170 | KEY 3/16SQ X 1-3/4 | 1 |
| 10 | 40005 | SHEAVE 3"OD X 2 GR.A X 3/4"BORE | 1 |

ILLUSTRATION 4: ENGINE GROUPING



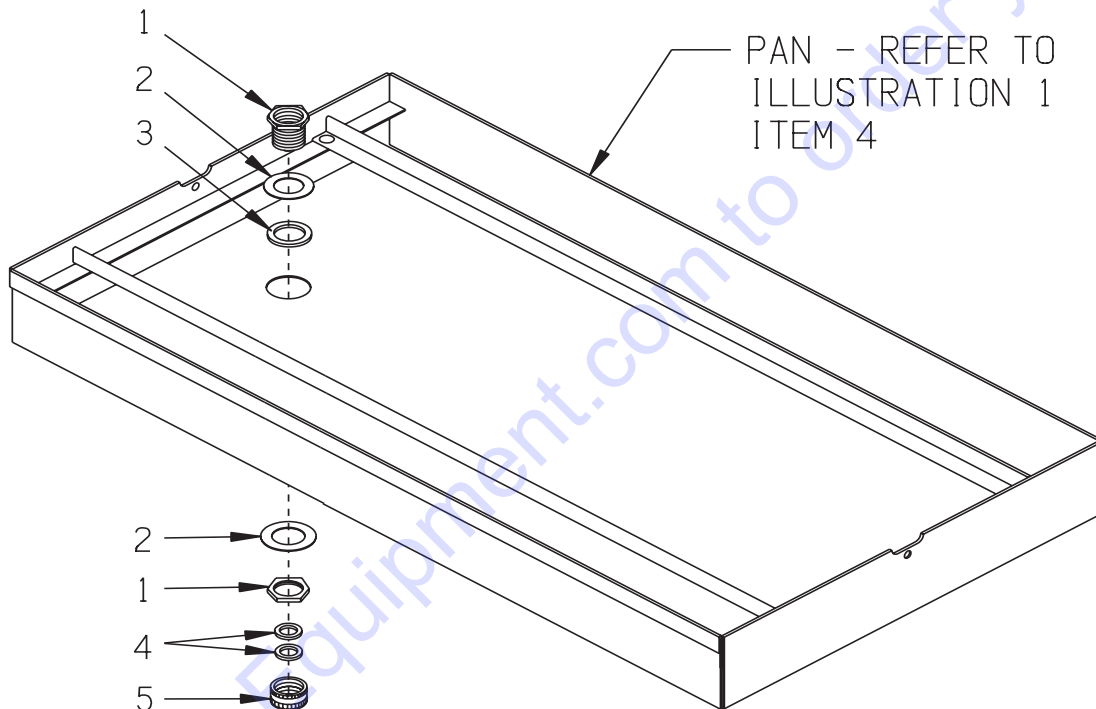
| ITEM # | PART # | DESCRIPTION | QTY. |
|--------|--------|---|------|
| 1 | | ENGINE W/ CYCLONE AIR CLEANER | 1 |
| | 15061 | SUBARU ROBIN EX17D CYC. A.C. | |
| | 40387 | HONDA GX160U1-QXC9 CYC.A.C. (SHOWN) | |
| 2 | | BARB, PUSH-ON | 1 |
| | 10657 | 3/8"HOSE X 1/4MPT (SUBARU) | |
| | 11541 | 3/8"HOSE X 10mm X 1.25 MALE THD. (HONDA) | |
| 3 | 56116 | HOSE, PUSH-ON 3/8"ID X 3"L | 1 |
| 4 | 11544 | BARB, PUSH-ON 3/8 HOSE X 1/4FPT | 1 |
| 5 | 10776 | PIPE PLUG 1/4 NPT (BRASS) | 1 |
| 6 | 10918 | BOLT, CARRIAGE 5/16-18 X 1-3/4 F.T. | 4 |
| 7 | 10213 | WASHER, FLAT 5/16 SAE | 4 |
| 8 | 10801 | WASHER, LOCK 5/16 | 4 |
| 9 | 10054 | NUT 5/16-18 | 4 |
| 10 | 10410 | BOLT, TAP 3/8-16 X 2-1/2 (FULL THD) | 1 |
| 11 | 10404 | NUT 3/8-16 | 1 |
| 12 | 40005 | SHEAVE 3"OD X 2 GR.A X 3/4"BORE | 1 |
| 13 | ---- | KEY 3/16"SQ. (INCLUDED W/ ENGINE) | 1 |
| 14 | 10233 | BELT AX-34 | 2 |
| 15 | 15138 | METER, HOUR, REDINGTON INDUCTIVE (OPTIONAL) | 1 |

ILLUSTRATION 5: OPTIONAL DRAIN ASSEMBLY

PART# 42250

INCLUDES ITEMS SHOWN BELOW

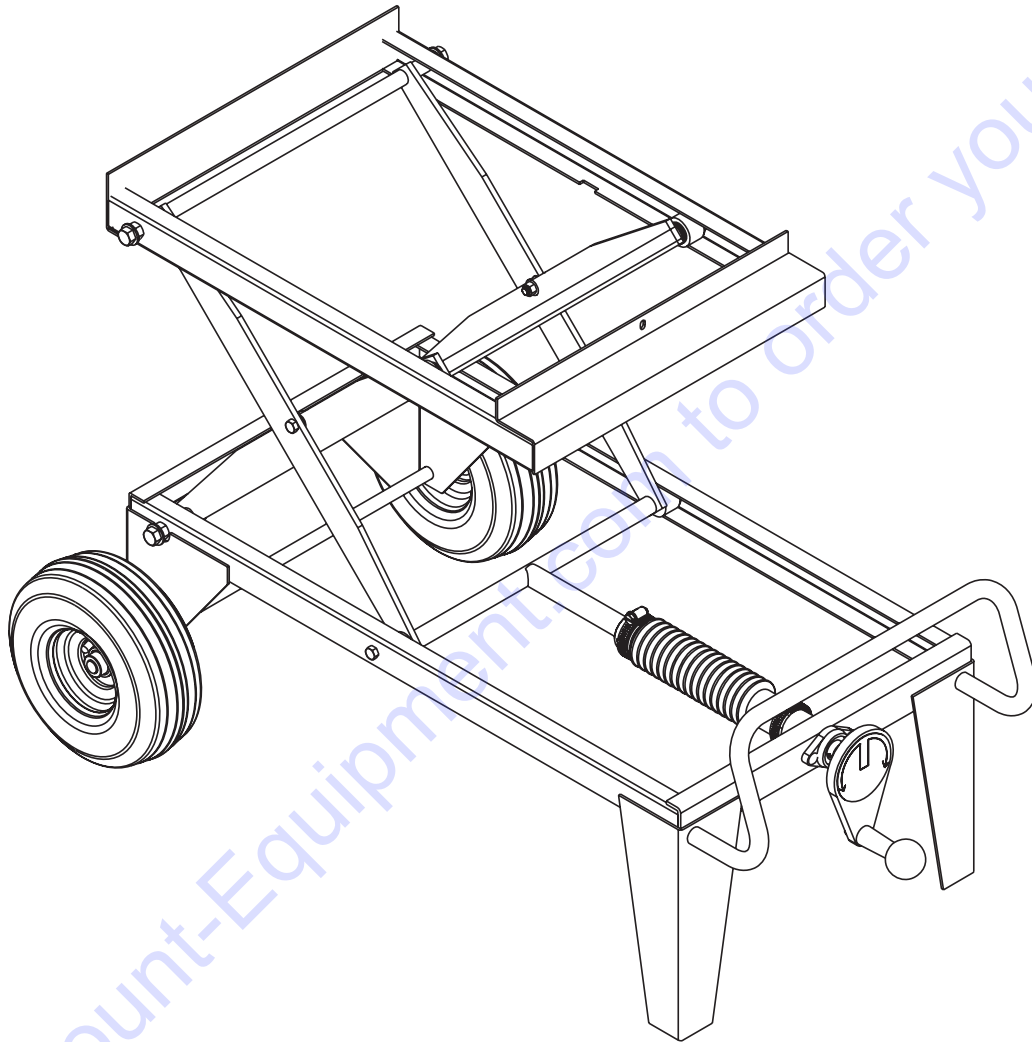
USE IN PLACE OF DRAIN PLUG
(ILLUSTRATION 1 - ITEM 5)



| ITEM # | PART # | DESCRIPTION | QTY. |
|--------|--------|--|------|
| 1 | 42251 | FITTING, DRAIN 3/4NH X 1/2FPT (BRASS) (INCLUDES THIN JAM NUT) | 1 |
| 2 | 10444 | WASHER, ALUM. 1.885ODX1.060IDX .040 | 2 |
| 3 | 42252 | WASHER, RUBBER 1-1/16IDX1-1/2ODX1/8 | 1 |
| 4 | 10070 | WASHER, HOSE 3/4 | 2 |
| 5 | 42253 | CAP, HOSE END (BRASS) | 1 |

ILLUSTRATION 6: OPTIONAL PROCART

PART# 24750

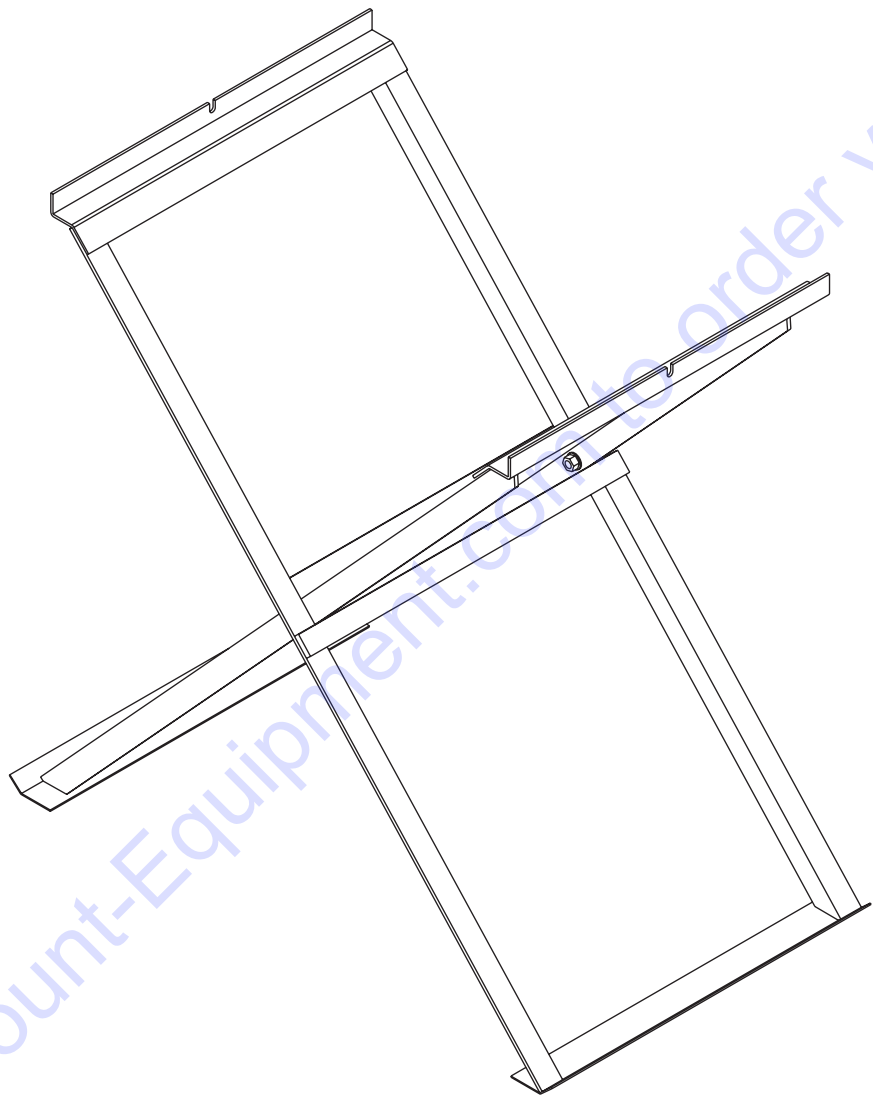


ADJUSTABLE SCISSOR STYLE CART

REFER TO THE PROCART PARTS LIST MANUAL
FOR THE PARTS BREAKDOWN INFORMATION

ILLUSTRATION 7: OPTIONAL FOLDING STAND

PART# 24150



Go to Discount-Equipment.com to order your parts

PARTS FINDER

**Search Website
by Part Number**



**Search Manual
Library For Parts
Manual & Lookup Part
Numbers – Purchase
or Request Quote**

Search Manuals

Enter your information to help us find the right parts manual for your machine.

* Brand:

* Model:

* Serial:

* Part Number:

SEARCH

**Can't Find Part or
Manual? Request Help
by Manufacturer,
Model & Description**

Parts Order Form

Please fill in the following information to help us find the right part for your machine.

| | |
|---------------|----------------------|
| Manufacturer: | <input type="text"/> |
| Model: | <input type="text"/> |
| Description: | <input type="text"/> |
| Part Number: | <input type="text"/> |
| Quantity: | <input type="text"/> |
| Notes: | <input type="text"/> |

Discount-Equipment.com is your online resource for quality parts & equipment.

Florida: **561-964-4949** Outside Florida TOLL FREE: **877-690-3101**

Need parts?

Click on this link: <http://www.discount-equipment.com/category/5443-parts/> and choose one of the options to help get the right parts and equipment you are looking for. Please have the machine model and serial number available in order to help us get you the correct parts. If you don't find the part on the website or on one of the online manuals, please fill out the request form and one of our experienced staff members will get back to you with a quote for the right part that your machine needs.

We sell worldwide for the brands: Genie, Terex, JLG, MultiQuip, Mikasa, Essick, Whiteman, Mayco, Toro Stone, Diamond Products, Generac Magnum, Airman, Haulotte, Barreto, Power Blanket, Nifty Lift, Atlas Copco, Chicago Pneumatic, Allmand, Miller Curber, Skyjack, Lull, Skytrak, Tsurumi, Husquvarna Target, Stow, Wacker, Sakai, Mi-T-M, Sullair, Basic, Dynapac, MBW, Weber, Bartell, Bennar Newman, Haulotte, Ditch Runner, Menegotti, Morrison, Contec, Buddy, Crown, Edco, Wyco, Bomag, Laymor, EZ Trench, Bil-Jax, F.S. Curtis, Gehl Pavers, Heli, Honda, ICS/PowerGrit, IHI, Partner, Imer, Clipper, MMD, Koshin, Rice, CH&E, General Equipment, Amida, Coleman, NAC, Gradall, Square Shooter, Kent, Stanley, Tamco, Toku, Hatz, Kohler, Robin, Wisconsin, Northrock, Oztec, Toker TK, Rol-Air, APT, Wylie, Ingersoll Rand / Doosan, Innovatech, Con X, Ammann, Mecalac, Makinex, Smith Surface Prep, Small Line, Wanco, Yanmar