

REVISED STARTING
SERIAL # 151110141



PARTS LIST MANUAL

MODEL SS26-15B



Electric Powered Self-Propelled Concrete & Asphalt Saw

SAW SET-UP OPTIONS

SKU NUMBER	BLADE GUARD SIZE	BLADE SPEED
34300-30-460	30 INCH	1755 RPM
34300-30-50/415	30 INCH	1450 RPM



PARTS FINDER

**Search Website
by Part Number**



**Search Manual
Library For Parts
Manual & Lookup Part
Numbers – Purchase
or Request Quote**

Search Manuals

Enter your information to help us find the right parts manual for your machine.

* Brand:

* Model:

* Serial:

* Part Number:

SEARCH

**Can't Find Part or
Manual? Request Help
by Manufacturer,
Model & Description**

Parts Order Form

Please fill in the following information to help us find the right part for your machine.

Manufacturer:	<input type="text"/>
Model:	<input type="text"/>
Description:	<input type="text"/>
Part Number:	<input type="text"/>
Quantity:	<input type="text"/>
Notes:	<input type="text"/>

Submit

Discount-Equipment.com is your online resource for quality parts & equipment.

Florida: **561-964-4949** Outside Florida TOLL FREE: **877-690-3101**

Need parts?

Click on this link: <http://www.discount-equipment.com/category/5443-parts/> and choose one of the options to help get the right parts and equipment you are looking for. Please have the machine model and serial number available in order to help us get you the correct parts. If you don't find the part on the website or on one of the online manuals, please fill out the request form and one of our experienced staff members will get back to you with a quote for the right part that your machine needs.

We sell worldwide for the brands: Genie, Terex, JLG, MultiQuip, Mikasa, Essick, Whiteman, Mayco, Toro Stone, Diamond Products, Generac Magnum, Airman, Haulotte, Barreto, Power Blanket, Nifty Lift, Atlas Copco, Chicago Pneumatic, Allmand, Miller Curber, Skyjack, Lull, Skytrak, Tsurumi, Husquvarna Target, Stow, Wacker, Sakai, Mi-T-M, Sullair, Basic, Dynapac, MBW, Weber, Bartell, Bennar Newman, Haulotte, Ditch Runner, Menegotti, Morrison, Contec, Buddy, Crown, Edco, Wyco, Bomag, Laymor, EZ Trench, Bil-Jax, F.S. Curtis, Gehl Pavers, Heli, Honda, ICS/PowerGrit, IHI, Partner, Imer, Clipper, MMD, Koshin, Rice, CH&E, General Equipment, Amida, Coleman, NAC, Gradall, Square Shooter, Kent, Stanley, Tamco, Toku, Hatz, Kohler, Robin, Wisconsin, Northrock, Oztec, Toker TK, Rol-Air, APT, Wylie, Ingersoll Rand / Doosan, Innovatech, Con X, Ammann, Mecalac, Makinex, Smith Surface Prep, Small Line, Wanco, Yanmar

READ AND UNDERSTAND THE OPERATORS INSTRUCTION MANUAL *THOROUGHLY* BEFORE ATTEMPTING TO OPERATE THIS EQUIPMENT.



Death or serious injury could occur if this machine is used improperly.



SAFETY MESSAGES

- Safety Instructions are preceded by a graphic alert symbol of DANGER, WARNING, or CAUTION.



Indicates an imminent hazard which, if not avoided, will result in death or serious injury.



Indicates an imminent hazard which, if not avoided, can result in death or serious injury.



Indicates hazards which, if not avoided, could result in serious injury and or damage to the equipment.

GASOLINE/PROPANE POWERED EQUIPMENT



- Engine exhaust from this product contains chemicals known to the State of California to cause cancer, birth defects or other reproductive harm.



- Gasoline is extremely flammable and poisonous. It should only be dispensed in well ventilated areas, and with a cool engine.

- Small gasoline engines produce high concentrations of carbon monoxide (CO) example: a 5 HP 4 cycle engine operation in an enclosed 100,000 cu. ft. area with only one change of air per hour is capable of providing deadly concentrations of CO in less than fifteen minutes. Five changes of air in the same area will produce noxious fumes in less than 30 minutes. Gasoline or propane powered equipment should not be used in enclosed or partially enclosed areas. Symptoms of CO poisoning include, headache, nausea, weakness, dizziness, visual problems and loss of consciousness. If symptoms occur - get into fresh air and seek medical attention immediately.

ELECTRICAL POWERED EQUIPMENT



Extreme care must be taken when operating electric models with water present: Ensure power cord is properly grounded, is attached to a Ground-Fault-Interrupter (GFI) outlet, and is undamaged.

- Check all electrical cables - be sure connections are tight and cable is continuous and in good condition. Be sure cable is correctly rated for both the operating current and voltage of this equipment.
- Improper connection of the equipment-grounding conductor can result in a risk of electric shock. Check with qualified electrician or service person if there is any doubt as to whether the outlet is properly grounded. Adhere to all local codes and ordinances.
- **NOTE:** In the event of a malfunction or breakdown, grounding provides a path of least resistance for the electric current to dissipate. The motor is equipped with a grounded plug and must be connected to an outlet that is properly installed and properly grounded. DO NOT modify the plug provided on the motor. If the plug does not fit the outlet have a qualified electrician install the proper receptacle.
- Switch motor OFF **before** disconnecting power.

- Do not disconnect power by pulling cord. To disconnect, grasp the plug, not the cord.
- Unplug power cord at the machine when not in use and before servicing.

GENERAL INSTRUCTIONS

- Equipment should only be operated by trained personnel in good physical condition and mental health (not fatigued). The operator and maintenance personnel must be physically able to handle the bulk weight and power of this equipment.
- This is a one person tool. Maintain a safe operating distance to other personnel. It is the **operators' responsibility** to keep other people (workers, pedestrians, bystanders, etc.) away during operation. Block off the work area in all directions with roping, safety netting, etc. for a safe distance. Failure to do so may result in others being injured by flying debris or exposing them to harmful dust and noise.
- This equipment is intended for commercial use only.
- For the operator's safety and the safety of others, always keep all guards in place during operation.
- Never let equipment run unattended.



- Personal Protection Equipment and proper safety attire must be worn when operating this machinery. The operator must wear approved safety equipment appropriate for the job such as hard hat and safety shoes when conditions require. Hearing protection **MUST** be used (operational noise levels of this equipment may exceed 85db). Eye protection **MUST** be worn at all times.



Keep body parts and loose clothing away from moving parts. Failure to do so could result in dismemberment or death.

- Do not modify the machine.
 - Stop motor/engine when adjusting or servicing this equipment.
- Maintain a safe operating distance from flammable materials. Sparks from the cutting-action of this machine can ignite flammable materials or vapors.



DUST WARNING



Some dust created by power sanding, sawing, grinding, drilling, and other construction activities contains chemicals known to cause cancer, birth defects, or other reproductive harm. Some examples of these chemicals are:

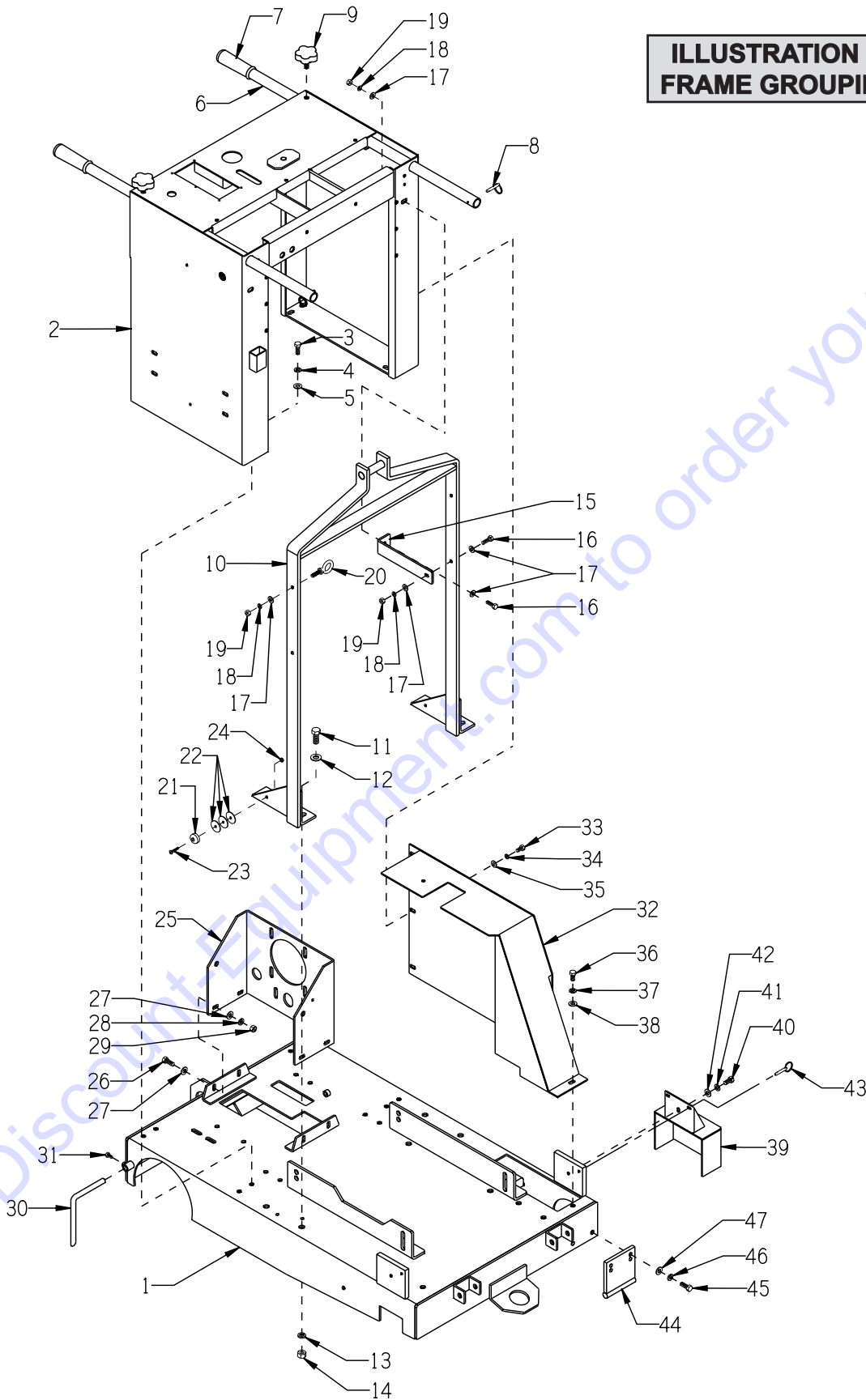
- Lead from lead-based paints, and
 - Crystalline silica from bricks and concrete and other masonry products.
- Your risk of exposure to these chemicals varies depending on how often you do this type of work. To reduce your risk: work in a well ventilated area, use a dust control system, such as an industrial-style vacuum, and wear approved personal safety equipment, such as a dust/particle respirator designed to filter out microscopic particles.

PARTS LIST MANUAL FOR MODEL SS26-15B

TABLE OF CONTENTS

<u>Section</u>	<u>Page Numbers</u>
Safety Messages & General Instructions	2
How To Order Replacement Parts	3
Illustration 1: Frame Grouping	4, 5
Illustration 2: Lift Grouping	6, 7
Illustration 3: Rear Axle Grouping	8, 9
Illustration 4: Transmission, Drive Lever & Linkage Grouping	10, 11
Illustration 5: Clutch Lever & Linkage Grouping	12, 13
Illustration 6: Clutch Grouping	14, 15
Illustration 7: Arbor Grouping	16, 17
Illustration 8: Blade Guard Grouping	18, 19
Illustration 9: Water Pump Grouping	20, 21
Illustration 10: Instrument Panel, Console Front & Rear Panel Grouping	22
Illustration 11: Blade Depth Gauge Grouping	23
Illustration 12: Operating Controls	24
Illustration 13: Guide Bar Assembly	25
Illustration 14: Motor & Mount Grouping	26, 27
Illustration 15: Alternator Grouping	28
Illustration 16: Battery Grouping	29
Illustration 17: Belt Drive Grouping	30, 31
Illustration 18: Starter & E-Stop Switch Grouping	32, 33
Illustration 19: Emergency Stop Switch	34
This Page Left Blank Intentionally	35
Wiring Diagram for 60Hz Model	36
Wiring Diagram for 60Hz Motor	37
Wiring Diagram for 50Hz Model	38
Wiring Diagram for 50Hz Motor	39
Decals Sheets	40, 41, 42
Notes	43
Limited Equipment Warranty of Sale - Terms & Conditions	44 Back Cover

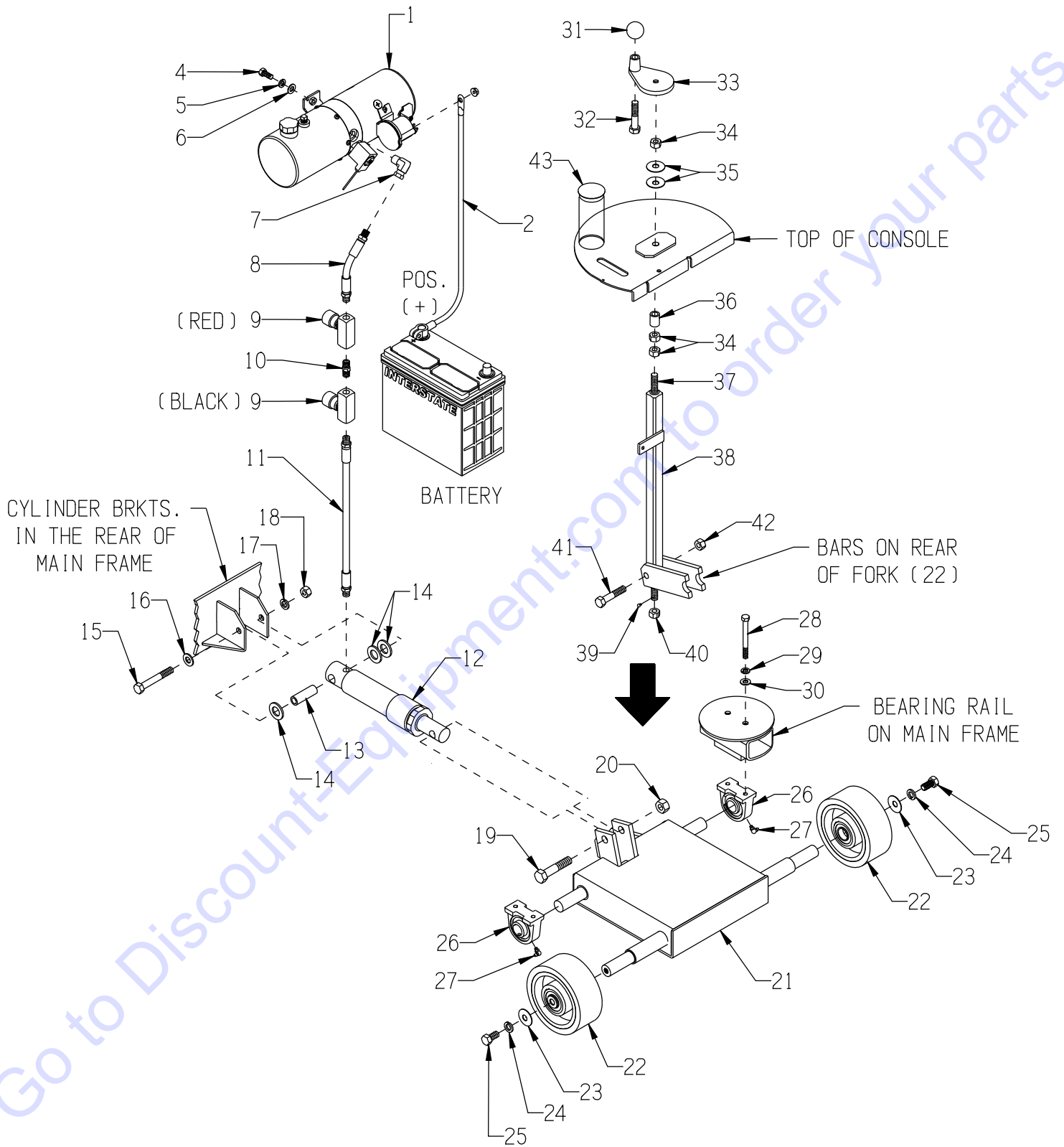
**ILLUSTRATION 1:
FRAME GROUPING**



PARTS LISTING - ILLUSTRATION 1: FRAME GROUPING

ITEM #	PART #	DESCRIPTION	QTY.	ITEM #	PART #	DESCRIPTION	QTY.
1	50701	MAIN FRAME, SS-26	1	24	10832	NUT, KEPS LOCK 10-32 ZINC	1
2	50650	CONSOLE, SS-26/35	1	25	50508	MOUNT, TRANSMISSION, SS-26	1
3	10055	SCREW, CAP 3/8-16 X 1	8	26	10021	SCREW, CAP 3/8-24 X 1	4
4	10811	WASHER, LOCK 3/8 ZINC	8	27	10025	WASHER, FLAT 3/8 SAE ZINC	8
5	10025	WASHER, FLAT 3/8 SAE ZINC	8	28	10811	WASHER, LOCK 3/8 ZINC	4
6	50522	HANDLE BAR 36", SS-26	2	29	10014	NUT, HEX 3/8-24 ZINC	4
7	10608	GRIP, HAND 1" MODEL AT	2	30	51011	GUIDE POINTER, REAR	1
8	10145	PIN, DETENT RING 3/16 X 1-5/16	2	31	10834	SCREW, CAP 1/4-20 X 1/2 ZINC	1
9	51230	KNOB, STAR CLAMPING 3/8-16 X 1"STUD	2	32	50670	BELT COVER, SS26E	1
10	50606E	BAIL, LIFTING	1	33	10053	SCREW, CAP 5/16-18 X 3/4	3
11	10321	SCREW, CAP 1/2-20 X 1-1/4	4	34	10801	WASHER, LOCK 5/16 ZINC	3
12	10312	WASHER, FLAT 1/2 SAE ZINC	4	35	10213	WASHER, FLAT 5/16 SAE ZINC	3
13	10045	WASHER, LOCK 1/2 ZINC	4	36	10907	SCREW, CAP 3/8-16 X 3/4	1
14	10072	NUT, HEX 1/2-20 ZINC	4	37	10811	WASHER, LOCK 3/8 ZINC	1
15	50711E	BRACE, LIFTING BAIL	2	38	10025	WASHER, FLAT 3/8 SAE ZINC	1
16	10806	SCREW, CAP 5/16-18 X 1	4	39	50704	COVER, ARBOR, SS-26	1
17	10213	WASHER, FLAT 5/16 SAE ZINC	9	40	10907	SCREW, CAP 3/8-16 X 3/4	1
18	10801	WASHER, LOCK 5/16 ZINC	5	41	10811	WASHER, LOCK 3/8 ZINC	1
19	10054	NUT, HEX 5/16-18 ZINC	5	42	10025	WASHER, FLAT 3/8 SAE ZINC	1
20	11593	BOLT, EYE SHOULDER 5/16-18 X 1-1/8	1	43	49016	PIN, DETENT RING 1/4 X 1 E.L.	1
21	52022	BUMPER, RUBBER	1	44	50703	GUARD, LOWER PULLEY, SS-26	1
22	40378-S1	WASHER, FENDER 1/4ID X 1-1/4OD S.S.	3	45	10055	SCREW, CAP 3/8-16 X 1	2
23	10384	SCREW, MACHINE 10-32 X 1	1	46	10811	WASHER, LOCK 3/8 ZINC	2
				47	10025	WASHER, FLAT 3/8 SAE ZINC	2

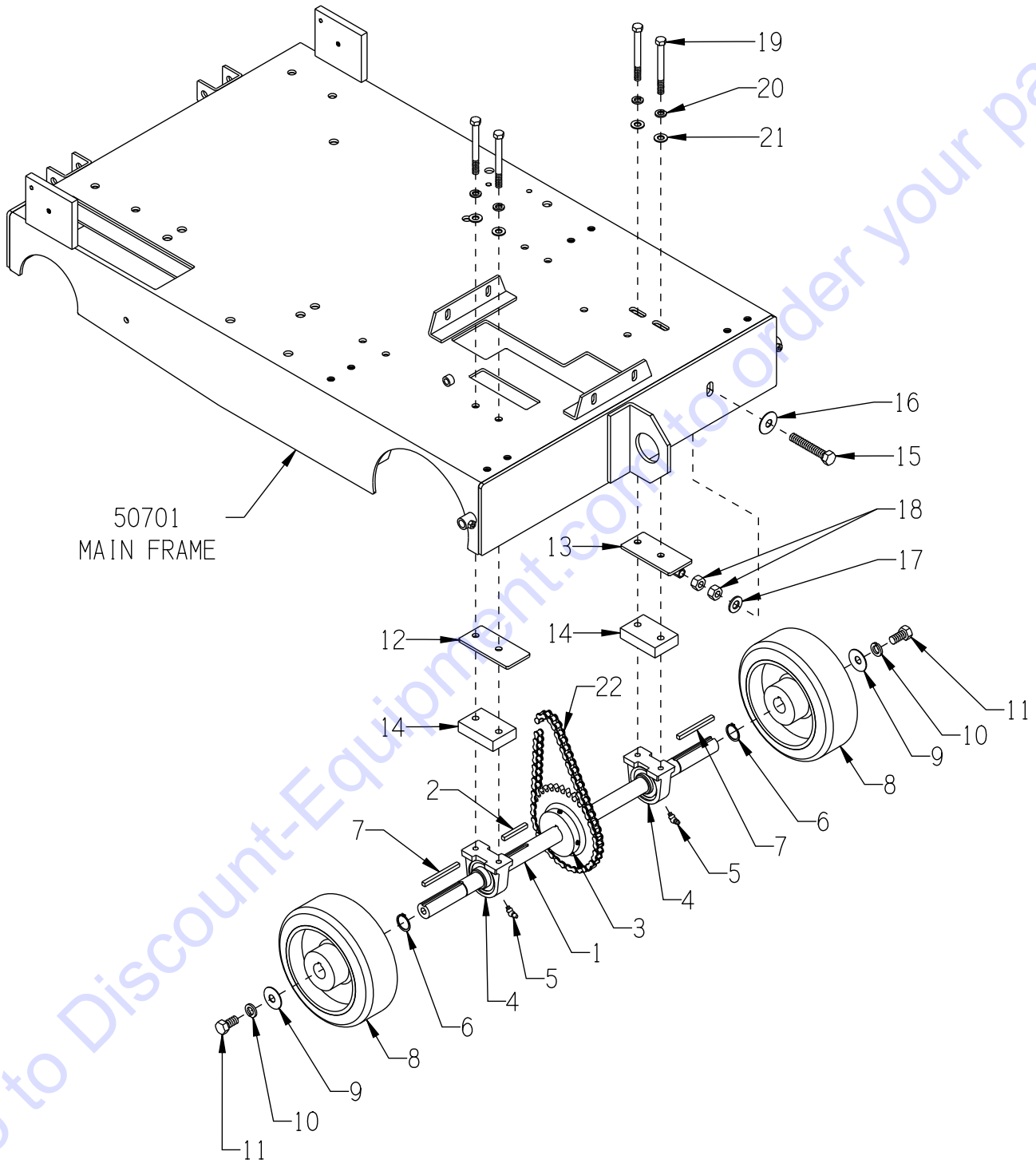
ILLUSTRATION 2: LIFT GROUPING



PARTS LISTING - ILLUSTRATION 2: LIFT GROUPING

ITEM #	PART #	DESCRIPTION	QTY.	ITEM #	PART #	DESCRIPTION	QTY.
1	50620	PUMP, HYDRAULIC ELEC., 12VDC M-319 REPLACEMENT PARTS FOR PUMP:	1	21	50502	FORK, SS-26	1
	50620-1	SOLENOID		22	50439	WHEEL 6 X 2-1/2 X 1"BRG., RED POLY	2
	50620-2	VALVE		23	10433	WASHER, BELLEVILLE 1/2ID X 3/32THK	2
	50620-12	COIL		24	10045	WASHER, LOCK 1/2 ZINC	2
	50620-42	PLUG, VENT (PLASTIC) 01143		25	10914	SCREW, CAP 1/2-13 X 1	2
	50620-43	PLUG, SQUARE HEAD, 1/4 NPT		26	50222	BEARING, BALL 1" TPB	2
2	50324R	CABLE, BATTERY 4GA. X 24" (RED)	1	27	10961	FITTING, GREASE 1/4-28 X 90°	2
3	-----	NO ITEM	-	28	10868	SCREW, CAP 3/8-16 X 3-1/2	4
4	10055	SCREW, CAP 3/8-16 X 1	2	29	10811	WASHER, LOCK 3/8 ZINC	4
5	10811	WASHER, LOCK 3/8 ZINC	2	30	10025	WASHER, FLAT 3/8 SAE ZINC	4
6	10025	WASHER, FLAT 3/8 SAE ZINC	2	31	14023	KNOB, BALL 1-3/8 W/ 1/2-13THD	1
7	10794	FITTING, SWIVEL 90D, 3/8 X 1/4 NPT	1	32	10323	SCREW, CAP 1/2-13 X 2-1/2	1
8	57078	HOSE, HYDRAULIC 1/4NPT X 6-1/2"LOA	1	33	57016	HANDWHEEL, SMALL W/ 1/2-13 THD.	1
9	61116	VALVE, FLOW CONTROL	2	34	10417	NUT, HEX 1/2-13 ZINC	3
10	10717	NIPPLE, HEX 1/4 NPT (BRASS)	1	35	10426	WASHER, BELLEVILLE 1/2ID X 3/64THK	2
11	50527	HOSE, HYDRAULIC 1/4NPT X 15-1/2"LOA	1	36	50526	SPACER, STEEL 1/2"ID X 1"LG	1
12	61020	CYLINDER, HYDRAULIC	1	37	50409	ROD, ALLTHREAD LINKAGE 1/2-13 X 22"	1
13	61021	SPACER, CYL.REAR 1/2"ID X 2-1/4	1	38	50412	LINKAGE LOWER TUBE, SS-26	1
14	10009	WASHER, FLAT 3/4 SAE ZINC	3	39	10127	SCREW, DRIVE 1/8 X 1/4"L	1
15	10324	SCREW, CAP 1/2-13 X 3-1/2	1	40	50455	NUT 1/2-13, SPECIAL	1
16	10312	WASHER, FLAT 1/2 SAE ZINC	1	41	10343	SCREW, CAP 1/2-20 X 2-1/2	1
17	10045	WASHER, LOCK 1/2 ZINC	1	42	10809	NUT, HEX LOCK 5/8-11 ZINC	1
18	10417	NUT, HEX 1/2-13 ZINC	1	43	65022	PLUG, HOLE 2"	1
19	10326	SCREW, CAP 5/8-11 X 3	1				
20	10809	NUT, HEX LOCK 5/8-11 ZINC	1				

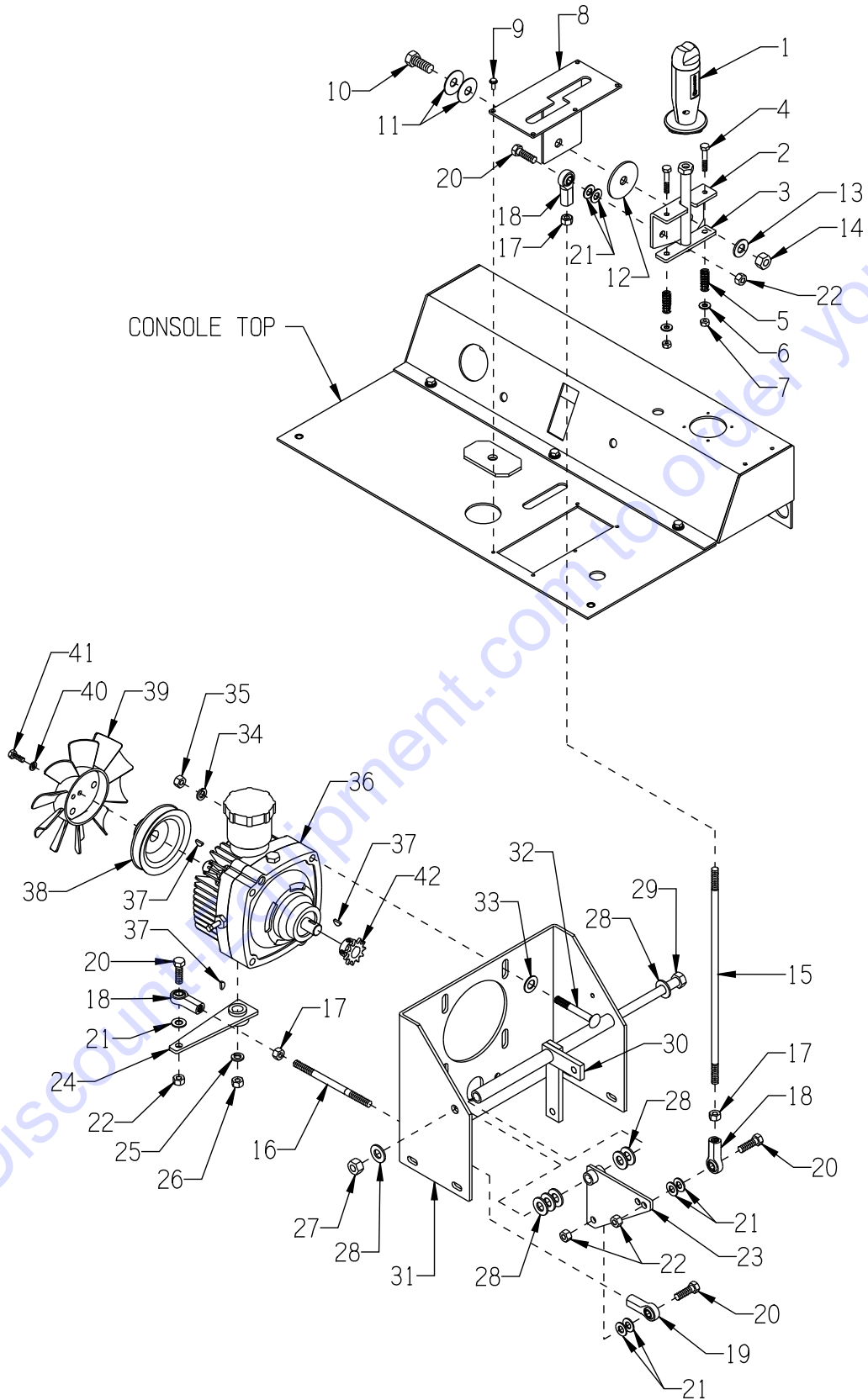
ILLUSTRATION 3: REAR AXLE GROUPING



PARTS LISTING - ILLUSTRATION 3: REAR AXLE GROUPING

ITEM #	PART #	DESCRIPTION	QTY.
1	50519	AXLE SHAFT 1"DIA. X 25"L, SS-26	1
2	10115	KEY 1/4SQ X 2	1
3	61126	SPROCKET #40B34 X 1"BORE	1
4	50222	BEARING, BALL 1" TPB	2
5	10960	FITTING, GREASE 1/4-28 X 45°	2
6	10906	RETAINING RING, EXT. 1"	2
7	10132	KEY 1/4SQ X 3	2
8	61065	WHEEL 8 X 3 X 1"BORE	2
9	10433	WASHER, BELLEVILLE 1/2ID X 3/32THK	2
10	10045	WASHER, LOCK 1/2 ZINC	2
11	10914	SCREW, CAP 1/2-13 X 1	2
12	50511	SHIM, AXLE BEARING, SS-26	1
13	50512	SHIM, AXLE BEARING W/ ADJ.,SS-26	1
14	50510	SPACER, BEARING, SS-26	2
15	10340	BOLT, TAP 1/2-13 X 3 (FULL THREAD)	1
16	10433	WASHER, BELLEVILLE 1/2ID X 3/32THK	1
17	10312	WASHER, FLAT 1/2 SAE ZINC	1
18	10417	NUT, HEX 1/2-13 ZINC	2
19	10318	SCREW, CAP 3/8-16 X 3-3/4	4
20	10811	WASHER, LOCK 3/8 ZINC	4
21	10025	WASHER, FLAT 3/8 SAE ZINC	4
22	50542	CHAIN #40 X 25" + CL, SS-26	1

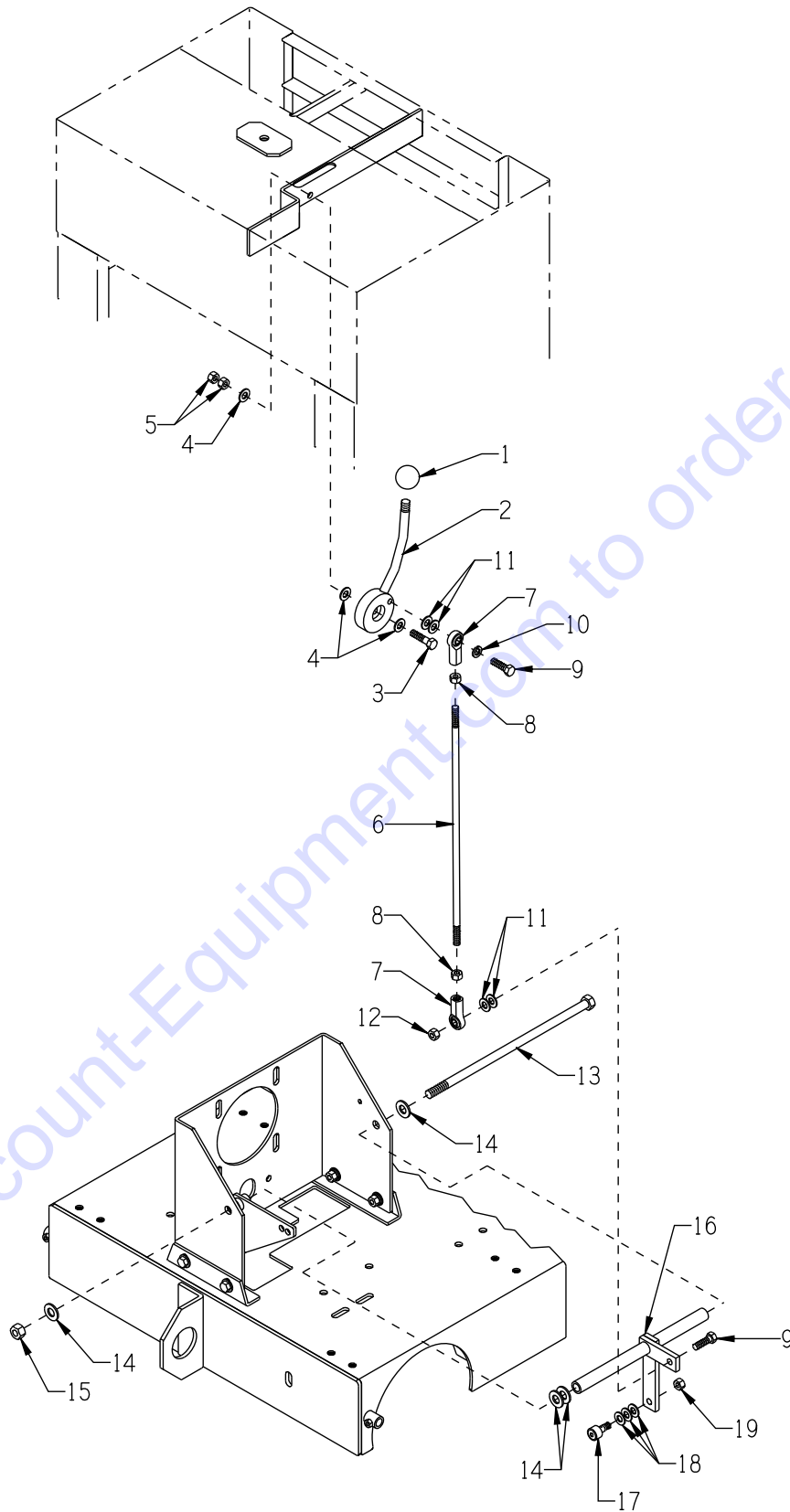
ILLUSTRATION 4: TRANSMISSION, DRIVE LEVER & LINKAGE GROUPING



**PARTS LISTING - ILLUSTRATION 4:
TRANSMISSION, DRIVE LEVER & LINKAGE GROUPING**

ITEM #	PART #	DESCRIPTION	QTY.	ITEM #	PART #	DESCRIPTION	QTY.
1	50610	GRIP W/ ROCKER SWITCH	1	20	10309	SCREW, CAP 3/8-24 X 1-1/4	4
	50610-1	INDIVIDUAL PARTS:	1	21	10025	WASHER, FLAT 3/8 SAE ZINC	7
	50614A	GRIP BUILD KIT, 2 HALVES	1	22	10004	NUT, HEX LOCK 3/8-24 ZINC	4
	50615	ROCKER SWITCH W/ WIRES	1	23	57123	BELLCRANK, DRIVE CONTROL	1
		CAP, RUBBER BOOT	1	24	50422	TRANS. CONTROL ARM	1
2	50613	PLATE, DRIVE LEVER	1	25	10811	WASHER, LOCK 3/8 ZINC	1
		PRESSURE		26	10404	NUT, HEX 3/8-16 ZINC	1
3	50608	LEVER, DRIVE, SS-26	1	27	10407	NUT, HEX LOCK 1/2-13 ZINC	1
4	10315	SCREW, CAP 1/4-20 X 1-1/2	2	28	10312	WASHER, FLAT 1/2 SAE ZINC	7
5	57471	SPRING, COMP. .	2	29	10421	SCREW, CAP 1/2-13 X 13	1
		468"OD X 1.25"FL		30	50450	BELL CRANK, CLUTCH, SS-26	1
6	10602	WASHER, FLAT 1/4 SAE ZINC	2	31	50508	MOUNT, TRANSMISSION, SS-26	1
7	10015	NUT, HEX LOCK 1/4-20 ZINC	2	32	10909	BOLT, CARRIAGE 3/8-16 X 3	4
8	50607	GATE, DRIVE LEVER, SS-26	1	33	10040	WASHER, GARRET	4
9	10877	SCREW, CAP STSHW	5			17/32 X 1 X .054	
		10-24 X 1/2		34	10811	WASHER, LOCK 3/8 ZINC	4
10	10321	SCREW, CAP 1/2-20 X 1-1/4	1	35	10404	NUT, HEX 3/8-16 ZINC	4
11	10426	WASHER, BELLEVILLE		36	50061	TRANSMISSION, HYDROSTATIC	1
		1/2ID X 3/64THK		37	50071	KEY, WOODRUFF 1/8 X 1/2	3
12	50428	WASHER, FIBER	1			(#404)	
		2-1/4OD X 1/2ID X 1/8		38	50062	SHEAVE, TRANS.	1
13	10312	WASHER, FLAT 1/2 SAE ZINC	1			4"OD X 1GR. X .671"B	
14	10205	NUT, HEX LOCK 1/2-20 ZINC	1	39	50266	FAN BLADE W/ PLATE 7",	1
15	57124	LINKAGE, ROD 3/8 X 14-5/8"L	1			TRANSMISSION	
16	50420	LINKAGE, ROD 3/8 X 5-3/4"L	1	40	10038	WASHER, LOCK 1/4 ZINC	1
17	10014	NUT, HEX 3/8-24 ZINC	3	41	10018	SCREW, CAP 1/4-20 X 3/4	1
18	10919	ROD END, FEMALE	3	42	50048	SPROCKET #3511 X .67"BORE	1
		3/8-24 R.H. THREAD					
19	10919L	ROD END, FEMALE	1				
		3/8-24 L.H. THREAD					

ILLUSTRATION 5: CLUTCH LEVER & LINKAGE GROUPING

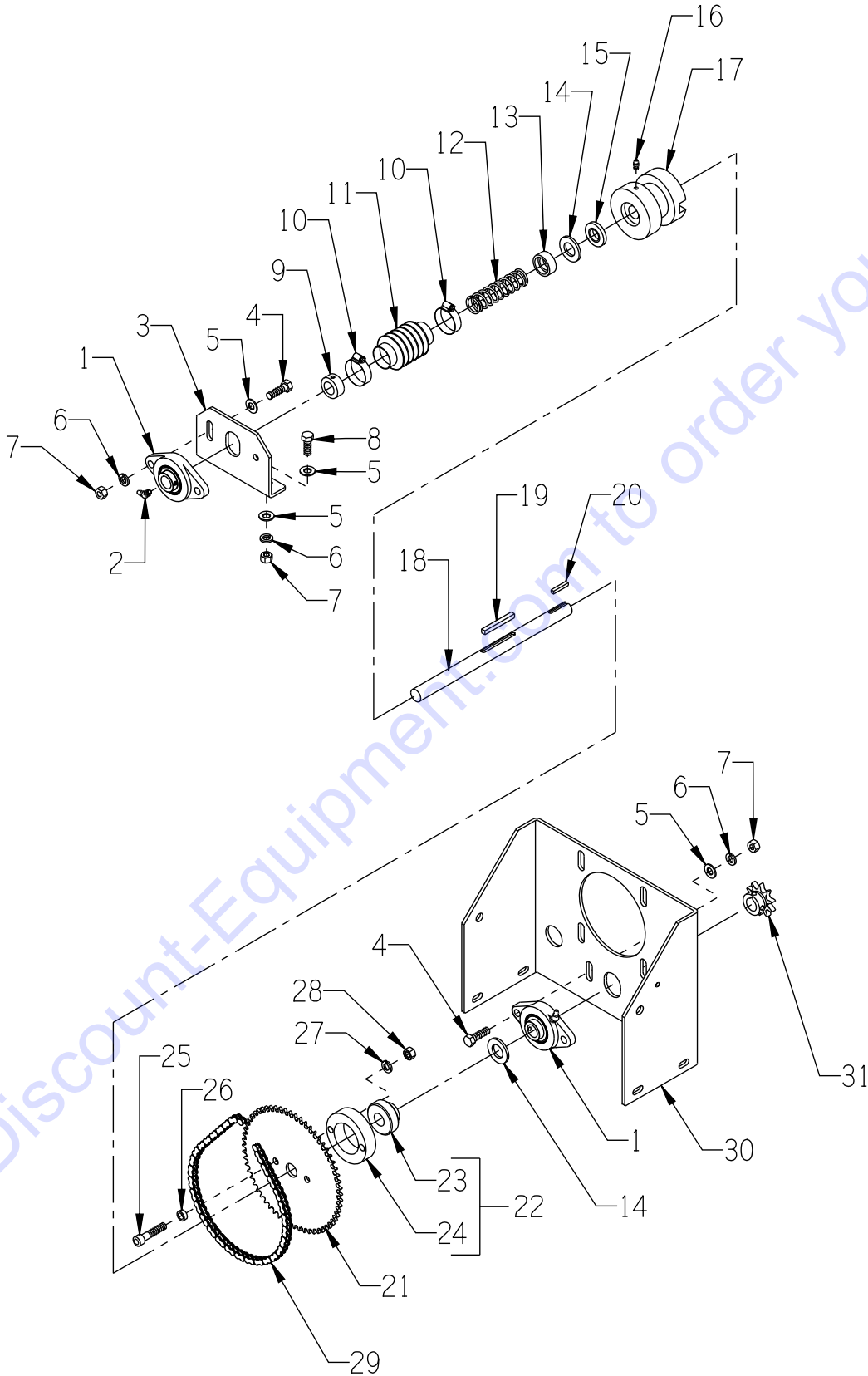


Go to Discount-Equipment.com to order your parts

**PARTS LISTING - ILLUSTRATION 5:
CLUTCH LEVER & LINKAGE GROUPING**

ITEM #	PART #	DESCRIPTION	QTY.
1	14023	KNOB, BALL 1-3/8 W/ 1/2-13THD, BLK.	1
2	50611	LEVER, CLUTCH, SS-26	1
3	10816	SCREW, CAP 3/8-24 X 1-1/2	1
4	10025	WASHER, FLAT 3/8 SAE ZINC	3
5	10004	NUT, HEX LOCK 3/8-24 ZINC	2
6	50612	LINKAGE, ROD 3/8 X 17"L	1
7	10919	ROD END, FEMALE 3/8-24 R.H. THREAD	2
8	10014	NUT, HEX 3/8-24 ZINC	2
9	10309	SCREW, CAP 3/8-24 X 1-1/4 ZINC	2
10	10811	WASHER, LOCK 3/8 ZINC	1
11	10025	WASHER, FLAT 3/8 SAE ZINC	4
12	10004	NUT, HEX LOCK 3/8-24 ZINC	1
13	10421	SCREW, CAP 1/2-13 X 13	1
14	10312	WASHER, FLAT 1/2 SAE ZINC	4
15	10407	NUT, HEX LOCK 1/2-13 ZINC	1
16	50450	BELL CRANK, CLUTCH, SS-26	1
17	10924	CAM FOLLOWER BRG. 3/4" X 3/8-24THD	1
18	10025	WASHER, FLAT 3/8 SAE ZINC	3
19	10004	NUT, HEX LOCK 3/8-24 ZINC	1

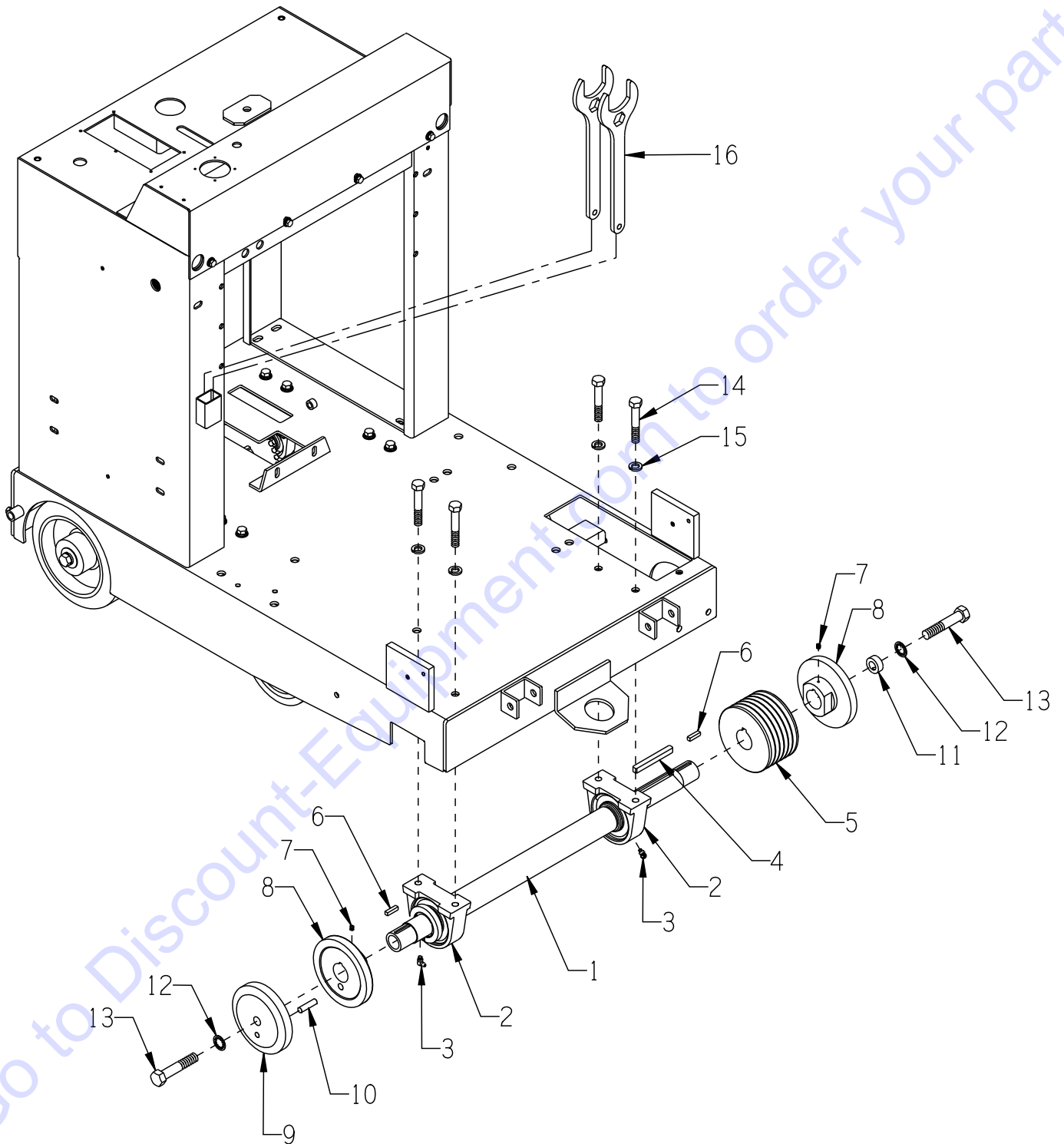
ILLUSTRATION 6: CLUTCH GROUPING



PARTS LISTING - ILLUSTRATION 6: CLUTCH GROUPING

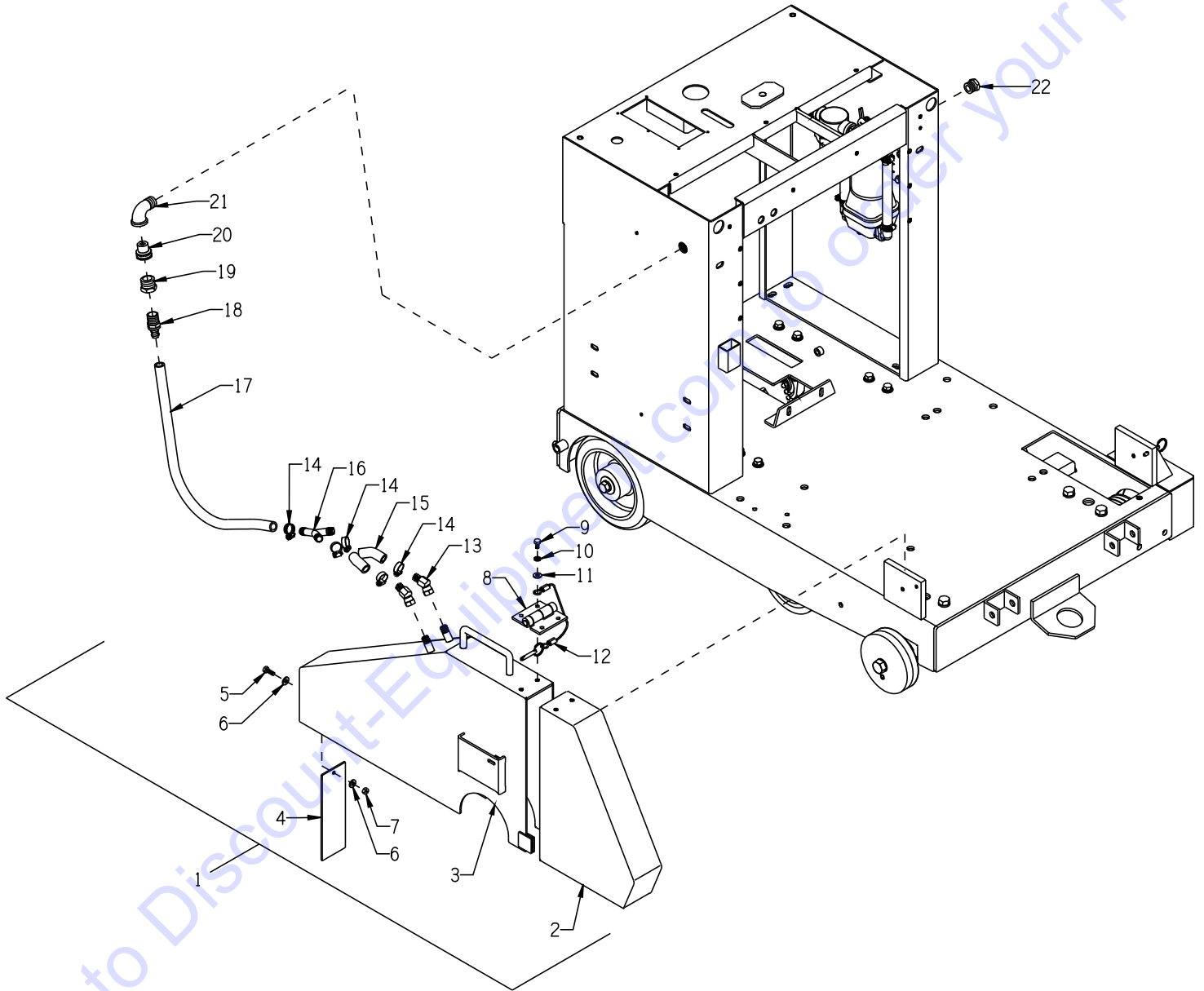
ITEM #	PART #	DESCRIPTION	QTY.
1	50049	BEARING, BALL 3/4" 2-HOLE FLANGE	2
2	10960	FITTING, GREASE 1/4-28 X 45°	2
3	50509	MOUNT, JACKSHAFT BEARING	1
4	10309	SCREW, CAP 3/8-24 X 1-1/4 ZINC	2
5	10025	WASHER, FLAT 3/8 SAE ZINC	8
6	10811	WASHER, LOCK 3/8 ZINC	6
7	10014	NUT, HEX 3/8-24 ZINC	6
8	10021	SCREW, CAP 3/8-24 X 1	2
9	10428	COLLAR, LOCKING 3/4"ID	1
10	10768	CLAMP, HOSE, SAE #16, ADJ. TO 1-1/2	2
11	10930	BELLOWS 1-1/4ID X 2-3/8EL X 1-3/4RL	1
12	10922	SPRING, COMP. 1"OD X 3.75"FL	1
13	57044	CLUTCH SPRING CUP	1
14	10009	WASHER, FLAT 3/4 SAE ZINC	2
15	3695	SEAL, OIL .750 X 1.375 X .250	1
16	10808	FITTING, GREASE 1/4-28 STRAIGHT	1
17	57042	CLUTCH, DOG BLOCK	1
18	50518	JACKSHAFT, CLUTCH 11-1/2", SS-26	1
19	10307	KEY 1/4SQ X 2-1/4	1
20	50523	KEY 3/16SQ X 1-1/8	1
21	50476	SPROCKET, CLUTCH #35A60	1
22	57038A	BEARING & CARRIER ASSY., CLUTCH	1
23	57038	BEARING, BALL 3/4ID X 1.8504"OD	1
24	57039	CARRIER, CLUTCH BEARING	1
25	10354	SCREW, SKT. HD. CAP 3/8-24 X 1-3/4	2
26	10113	SPACER, STEEL 9/16OD X 3/8ID X 7/32	2
27	10811	WASHER, LOCK 3/8 ZINC	2
28	10014	NUT, HEX 3/8-24 ZINC	2
29	64032	CHAIN #35 X 24-1/2" + CL	1
30	50508	MOUNT, TRANSMISSION, SS-26	1
31	50436	SPROCKET #40B10 X 3/4"BORE	1

ILLUSTRATION 7: ARBOR GROUPING



PARTS LISTING - ILLUSTRATION 7: ARBOR GROUPING			
ITEM #	PART #	DESCRIPTION	QTY.
1	50720	ARBOR SHAFT 28-1/8"L, SS-26	1
2	10111	BEARING, BALL 1-1/2" TAP PIL. BLOCK	2
3	10961	FITTING, GREASE 1/4-28 X 90°	2
4	10074	KEY 3/8SQ X 3-1/2	1
5	10512	SHEAVE 4.80"OD X 6GR.3V X 1-7/16"B (30" BLADE SET-UP)	1
6	10174	KEY 1/4SQ X 1	2
7	10161	SCREW, SET 1/4-28 X 5/16	2
8	50734 50721	ARBOR BACKING PLATE 6" (30" BLADE SET-UP) 5" (14" - 26" BLADE SET-UP)	2
9	57405 57403	ARBOR BLADE CAP 6" (30" BLADE SET-UP) 5" (14" - 26" BLADE SET-UP)	1
10	50722	PIN, SHEAR PROOF 3/8 X 1-1/2	1
11	10096	COLLAR, LOCKING 5/8"ID (SET SCREW REMOVED)	1
12	10457	WASHER, LOCK, INT. TOOTH 5/8"	2
13	10359	SCREW, CAP 5/8-11 X 3-1/4	2
14	10499	SCREW, CAP 1/2-13 X 3	4
15	10045	WASHER, LOCK 1/2 ZINC	4
16	57406	WRENCH, ARBOR, 2" & 15/16" COMBO	2

ILLUSTRATION 8: BLADE GUARD GROUPING



PARTS LISTING - ILLUSTRATION 8: BLADE GUARD GROUPING			
ITEM #	PART #	DESCRIPTION	QTY.
1	50735A* 57449A* 57450A* 57451A*	BLADE GUARD ASSEMBLY (ITEMS 2 THRU 16) *NOTE: DROP "A" SUFFIX FOR ITEMS 2, 3, 8, 9 10, & 11. 30" BLADE 24" - 26" BLADE (SHOWN) 18" - 20" BLADE 14" - 16" BLADE	1
2	50735F 57449F 57450F 57451F	BLADE GUARD FRONT ONLY 30" BLADE 24" - 26" BLADE (SHOWN) 18" - 20" BLADE 14" - 16" BLADE	1
3	50735R 57449R 57450R 57451R	BLADE GUARD REAR ONLY 30" BLADE 24" - 26" BLADE (SHOWN) 18" - 20" BLADE 14" - 16" BLADE	1
4	41115	FLAP, RUBBER 2-1/2 X 8	1
5	10018	SCREW, CAP 1/4-20 X 3/4	1
6	10602	WASHER, FLAT 1/4 SAE ZINC	2
7	10015	NUT, HEX LOCK 1/4-20 ZINC	1
8	11617	HINGE, BUTT 3 X 3 X 7GA.	1
9	10834	SCREW, CAP 1/4-20 X 1/2 ZINC	4
10	10038	WASHER, LOCK 1/4 ZINC	4
11	10602	WASHER, FLAT 1/4 SAE ZINC	1
12	57482 57483 57484 57485	PIN & CABLE 30" BLADE GUARD 24" - 26" BLADE GUARD 18" - 20" BLADE GUARD 14" - 16" BLADE GUARD	1
13	10710	FITTING, SWIVEL 45, 1/4NPT HYD.	2
14	50069	CLAMP, HOSE, SAE #6, ADJ. TO 13/16	5
15	50532	HOSE, WATER 1/2"ID X 2"L	2
16	10682	BARBED FITTING, "Y" 1/2"HOSE	1
17	57194 57183 57140	HOSE 1/2"ID 22"L FOR 30" GUARD 24"L FOR 24" - 26" GUARD 26"L FOR 14" - 16" & 18" - 20" GUARDS	1
18	80061	BARB, PUSH-ON 1/2HOSE X 1/2MPT	1
19	10780	CONN., MALE 3/4NH X 1/2FPT (BRASS)	1
20	80021	CONN., SWIVEL FEM. 3/4HOSE X 1/2MPT	1
21	10724	ELBOW, STREET 1/2NPT X 90 (BLACK)	1
22	50552	PIPE PLUG 1/2 NPT (BRASS)	1

PARTS FINDER

**Search Website
by Part Number**



**Search Manual
Library For Parts
Manual & Lookup Part
Numbers – Purchase
or Request Quote**

Search Manuals

Enter your information to help us find the right parts manual for your machine.

* Brand:

* Model:

* Serial:

* Part Number:

SEARCH

**Can't Find Part or
Manual? Request Help
by Manufacturer,
Model & Description**

Parts Order Form

Please fill in the following information to help us find the right part for your machine.

Manufacturer:	<input type="text"/>
Model:	<input type="text"/>
Description:	<input type="text"/>
Part Number:	<input type="text"/>
Quantity:	<input type="text"/>
Notes:	<input type="text"/>

Submit

Discount-Equipment.com is your online resource for quality parts & equipment.

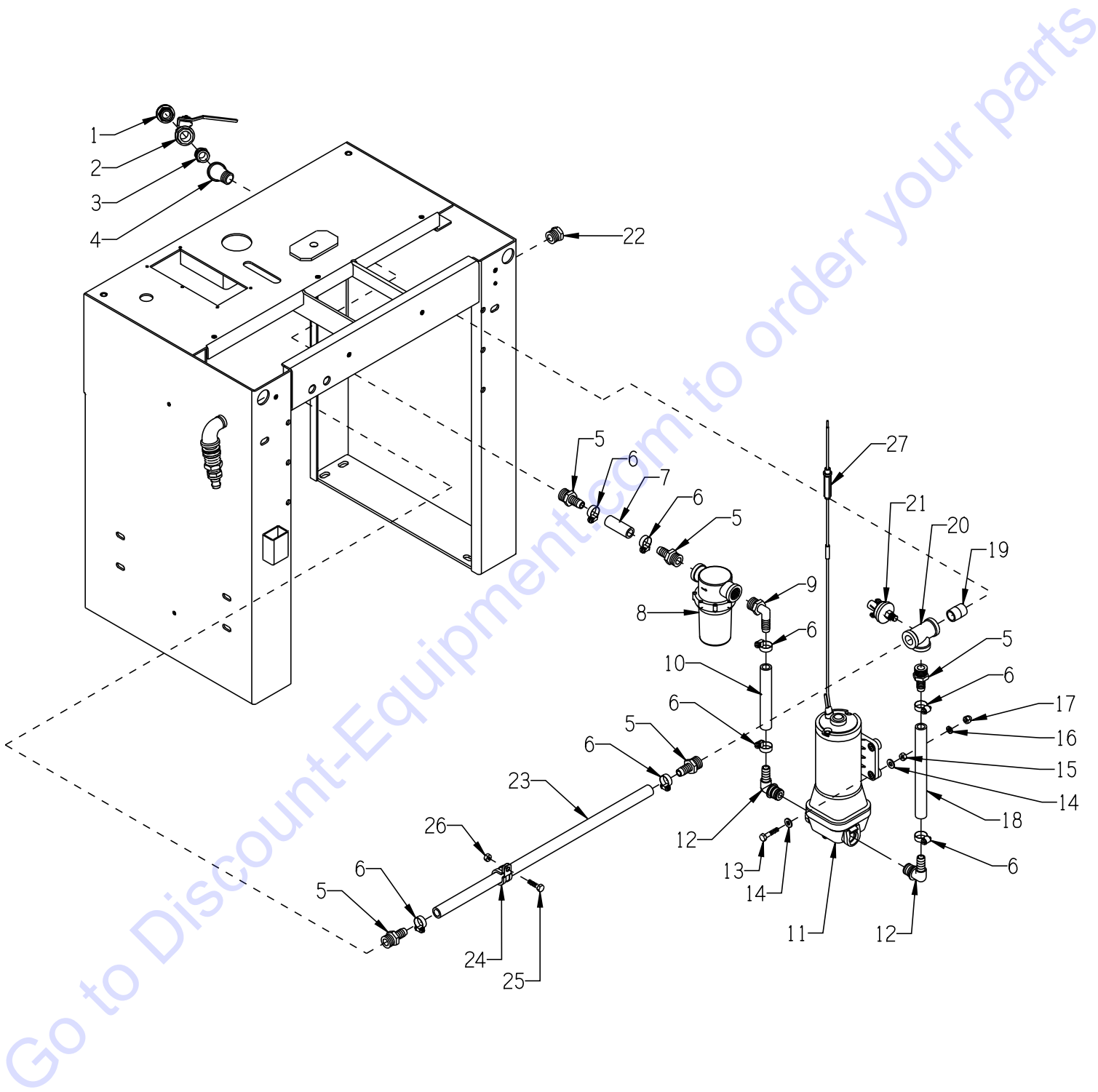
Florida: **561-964-4949** Outside Florida TOLL FREE: **877-690-3101**

Need parts?

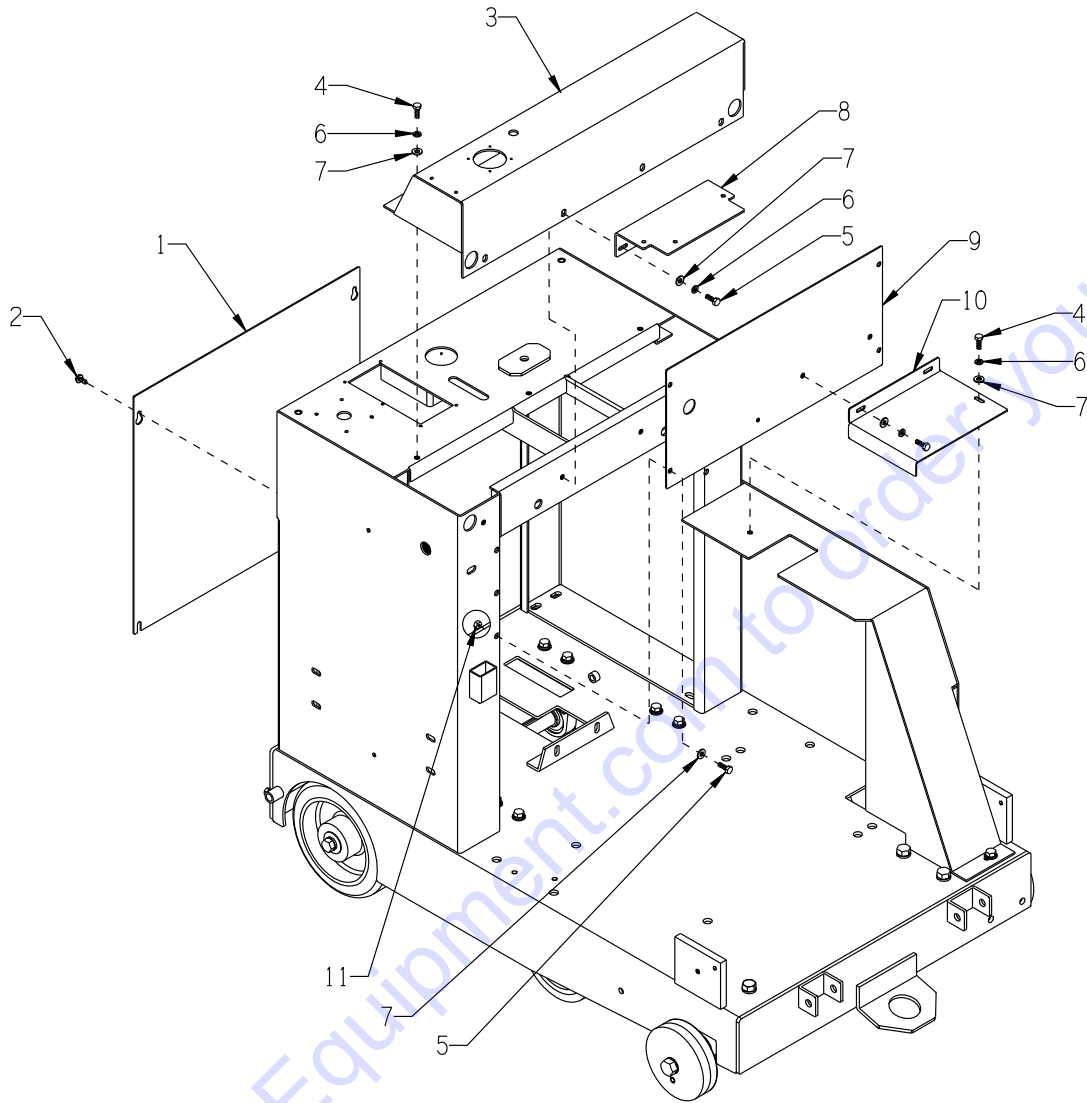
Click on this link: <http://www.discount-equipment.com/category/5443-parts/> and choose one of the options to help get the right parts and equipment you are looking for. Please have the machine model and serial number available in order to help us get you the correct parts. If you don't find the part on the website or on one of the online manuals, please fill out the request form and one of our experienced staff members will get back to you with a quote for the right part that your machine needs.

We sell worldwide for the brands: Genie, Terex, JLG, MultiQuip, Mikasa, Essick, Whiteman, Mayco, Toro Stone, Diamond Products, Generac Magnum, Airman, Haulotte, Barreto, Power Blanket, Nifty Lift, Atlas Copco, Chicago Pneumatic, Allmand, Miller Curber, Skyjack, Lull, Skytrak, Tsurumi, Husquvarna Target, Stow, Wacker, Sakai, Mi-T-M, Sullair, Basic, Dynapac, MBW, Weber, Bartell, Bennar Newman, Haulotte, Ditch Runner, Menegotti, Morrison, Contec, Buddy, Crown, Edco, Wyco, Bomag, Laymor, EZ Trench, Bil-Jax, F.S. Curtis, Gehl Pavers, Heli, Honda, ICS/PowerGrit, IHI, Partner, Imer, Clipper, MMD, Koshin, Rice, CH&E, General Equipment, Amida, Coleman, NAC, Gradall, Square Shooter, Kent, Stanley, Tamco, Toku, Hatz, Kohler, Robin, Wisconsin, Northrock, Oztec, Toker TK, Rol-Air, APT, Wylie, Ingersoll Rand / Doosan, Innovatech, Con X, Ammann, Mecalac, Makinex, Smith Surface Prep, Small Line, Wanco, Yanmar

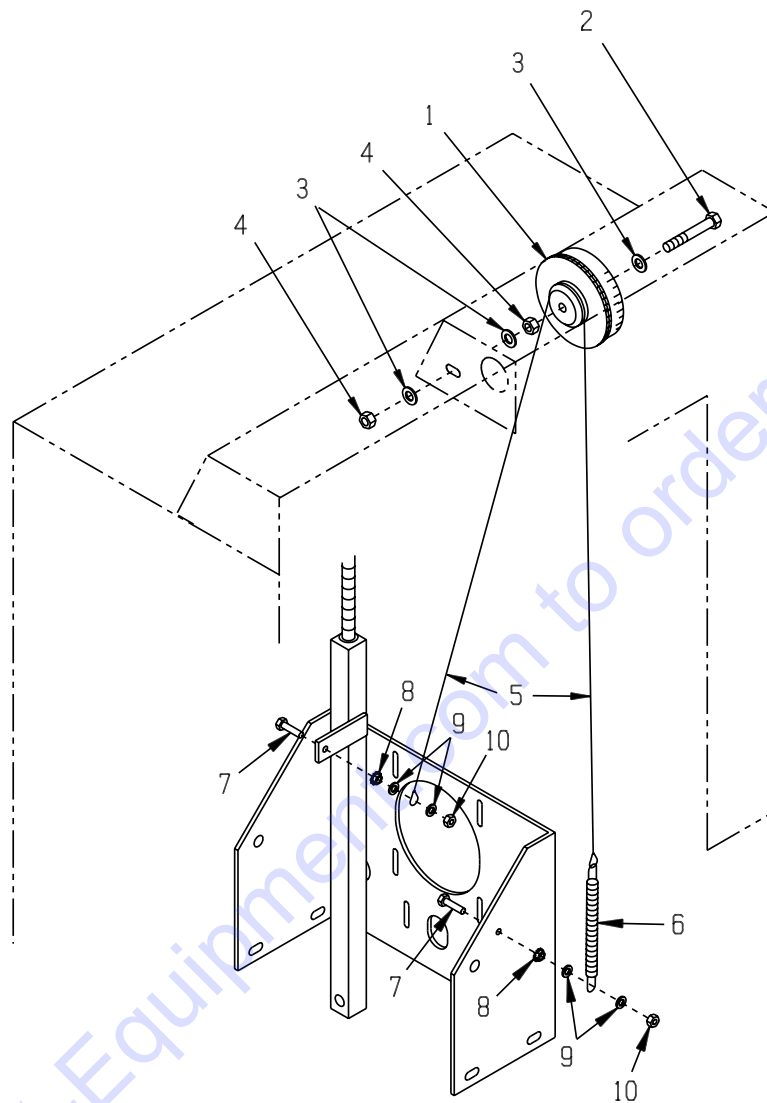
ILLUSTRATION 9: WATER PUMP GROUPING



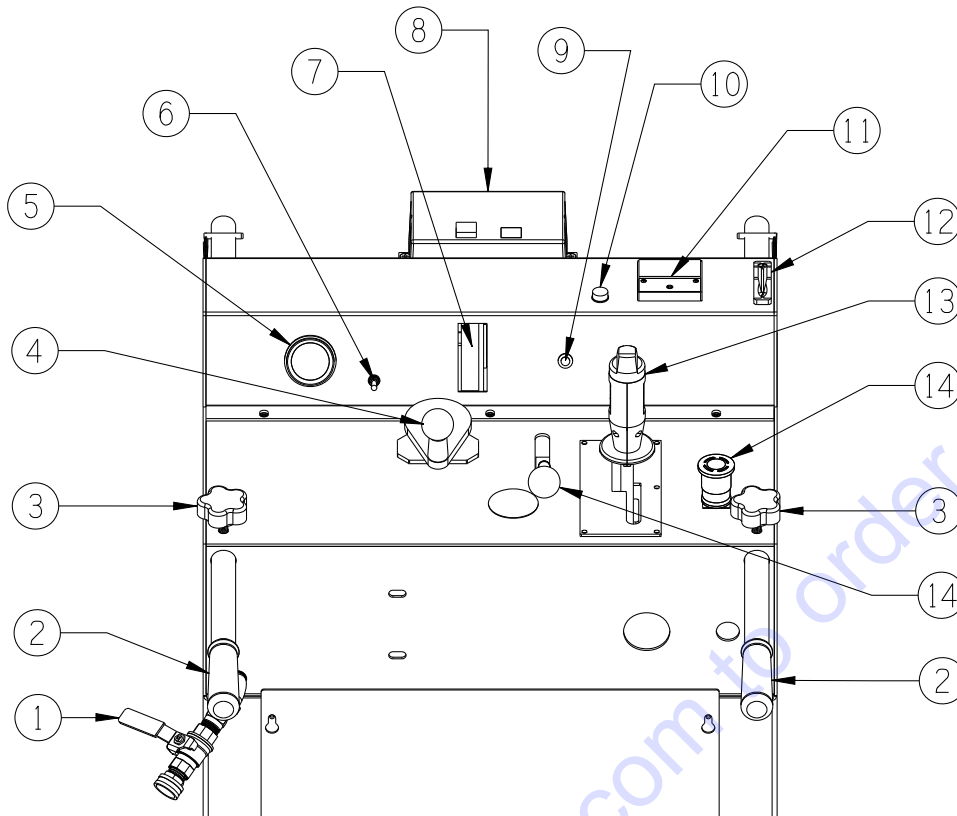
PARTS LISTING - ILLUSTRATION 9: WATER PUMP GROUPING			
ITEM #	PART #	DESCRIPTION	QTY.
1	80021	CONN., SWIVEL FEM. 3/4HOSE X 1/2MPT	1
2	10711A	VALVE & HOSE CONNECTOR ASSY.	1
	10711	VALVE, BALL 1/2 FPT	1
3	10679	NIPPLE, HEX 1/2NPT (BRASS)	1
4	10734	ELBOW, STREET 1/2NPT X 45 (BLACK)	1
5	10680	BARB, 1/2HOSE X 1/2MPT (PLASTIC)	5
6	50069	CLAMP, HOSE, SAE #6, ADJ. TO 13/16	8
7	50532	HOSE, WATER 1/2"ID X 2"L	1
8	57170	STRAINER, NYLON T-STYLE 1/2FPT	1
9	50471	BARB ELBOW 90, 1/2HOSE X 1/2MPT	1
10	57168	HOSE, WATER 1/2"ID X 4-7/8"L	1
11	50470	PUMP, WATER, 12VDC, FLOJET QUAD (INCLUDES ITEM 12)	1
12	50469	PUMP QUAD PORT BARB ELBOW 1/2" (INCLUDED W/ PUMP, ITEM 11)	2
13	10905	SCREW, CAP 1/4-20 X 1-1/4	4
14	10602	WASHER, FLAT 1/4 SAE ZINC	8
15	10015	NUT, HEX LOCK 1/4-20 ZINC	4
16	10038	WASHER, LOCK 1/4 ZINC	4
17	10876	NUT, ACORN 1/4-20	4
18	57176	HOSE, WATER 1/2"ID X 7-1/4"L	1
19	10728	PIPE NIPPLE, CLOSE 1/2NPT (BLACK)	1
20	50525	PIPE TEE, WATER PRESS. SW. 1/2 NPT	1
21	51030	SWITCH, PRESSURE, 76061 2 N/C	1
22	50552	PIPE PLUG 1/2 NPT (BRASS)	1
23	50655	HOSE, WATER 1/2"ID X 20"L, SS-26	1
24	11565	CLAMP, LOOM, 5/8" (SAE SIZE 10) RUBBER PIECE REMOVED	1
25	10031	SCREW, CAP 1/4-20 X 1	1
26	10861	NUT, KEPS LOCK 1/4-20 ZINC	1
27	50447	FUSE & HOLDER, 10 AMP	1

ILLUSTRATION 10: INSTRUMENT PANEL, CONSOLE FRONT & REAR PANEL GROUPING

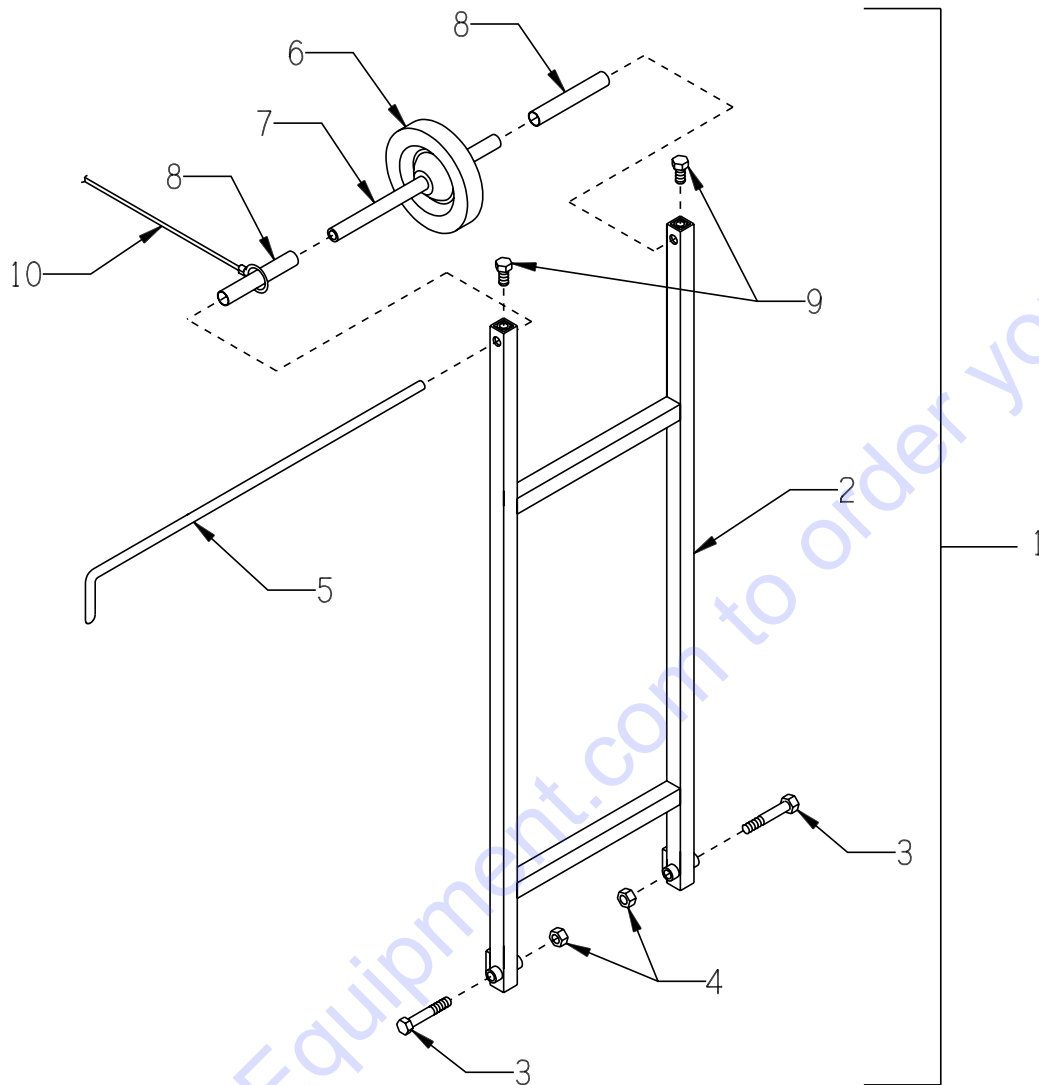
ITEM #	PART #	DESCRIPTION	QTY.
1	50674	BACK PANEL, SS26-15B	1
2	10846	SCREW, CAP STSHW 1/4-20 X 1/2	4
3	50651E	INSTRUMENT PANEL, SS26-15B	1
4	10018	SCREW, CAP 1/4-20 X 3/4	5
5	10031	SCREW, CAP 1/4-20 X 1	2
6	10038	WASHER, LOCK 1/4 ZINC	10
7	10602	WASHER, FLAT 1/4 SAE ZINC	14
8	50664	MOUNTING BRKT., CONTROL BOX, SS26E	1
9	50668	CONSOLE FRONT COVER, SS26E	1
10	50669	ALTERNATOR COVER, SS26E	1
11	10150	NUT, HEX NYLON LOCK 1/4-20 ZINC	4

ILLUSTRATION 11: BLADE DEPTH GAUGE GROUPING

ITEM #	PART #	DESCRIPTION	QTY.
1	57132	WHEEL, DEPTH GAUGE	1
2	10336	SCREW, CAP 3/8-24 X 2-1/4	1
3	10025	WASHER, FLAT 3/8 SAE ZINC	3
4	10004	NUT, HEX LOCK 3/8-24 ZINC	2
5	57143	CABLE, DEPTH GAUGE 3/32 X 34"L	1
6	3636	SPRING, EXT. 6"L	1
7	10031	SCREW, CAP 1/4-20 X 1	2
8	10861	NUT, KEPS LOCK 1/4-20 ZINC	2
9	10602	WASHER, FLAT 1/4 SAE ZINC	4
10	10150	NUT, HEX NYLON LOCK 1/4-20 ZINC	2

ILLUSTRATION 12: OPERATING CONTROLS

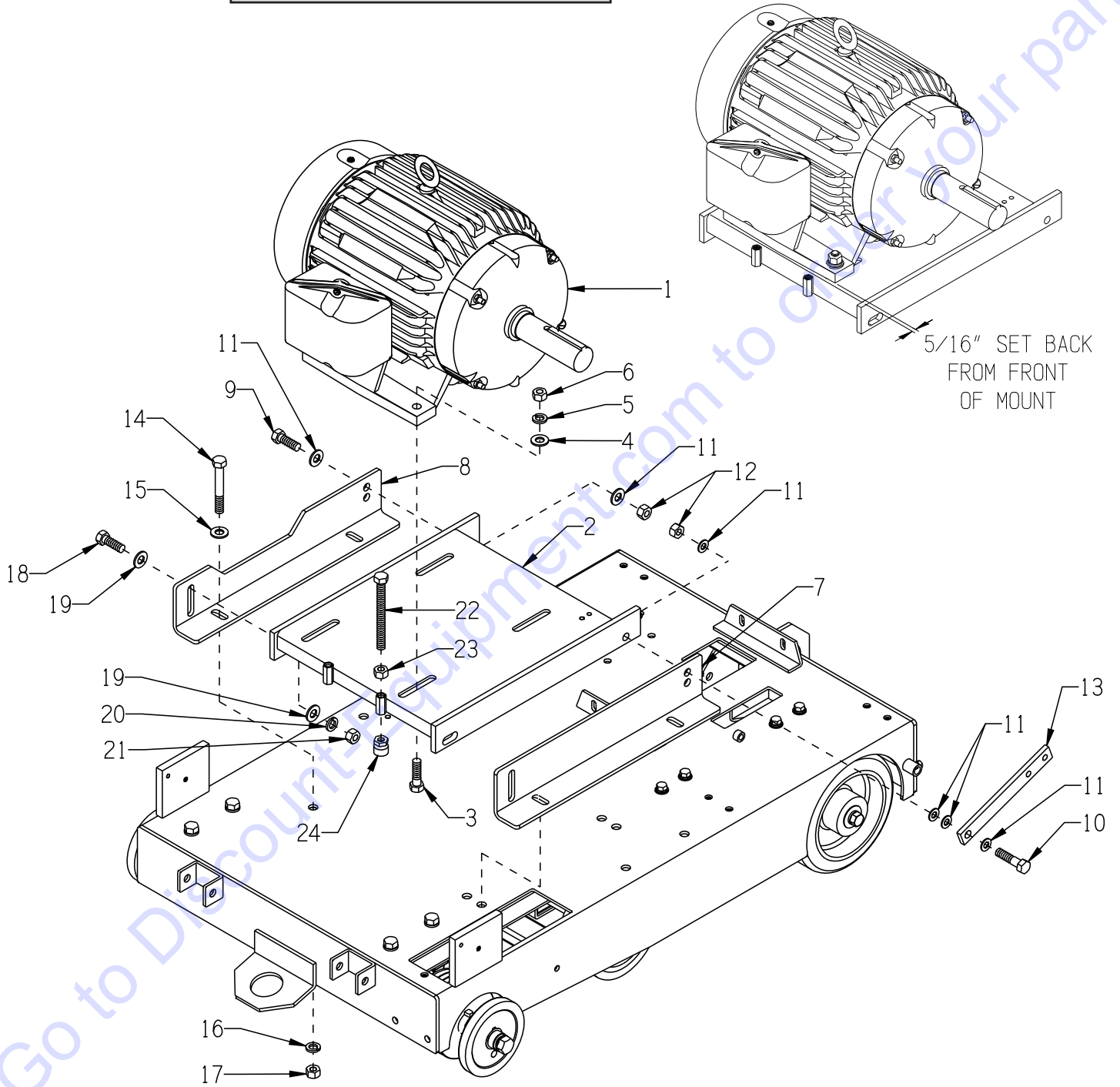
ITEM #	PART #	DESCRIPTION	QTY.
1	-----	WATER HOOK-UP AND VALVE (ILLUS. 9)	1
2	-----	EXTENDABLE HANDLES (ILLUS. 1)	2
3	51230	HANDLE LOCK KNOB, STAR CLAMPING 3/8-16 X 1"STUD (ILLUS. 1)	2
4	-----	DEPTH CONTROL (ILLUS. 2)	1
5	10637	METER, HOUR 2-1/16"	1
6	10633	"WATER PUMP" SWITCH, TOGGLE SPST	1
7	-----	DEPTH INDICATOR (ILLUS. 11)	1
8	-----	ON/OFF STARTER BOX (ILLUS. 18)	1
9	10633	"BATTERY SAVER" SWITCH, TOGGLE SPST	1
10	16544	"LOW WATER PRESSURE ALERT" LAMP, 12V JUMBO RED	1
11	16543	AMMETER, AC ANALOG 0-50 AMP	1
12	11591	ROPE CLEAT, NYLON JAM 3/16"-5/16"	1
	11594	SCREW, MACHINE 10-32 X 5/8, SLT.FLT	2
	10832	NUT, KEPS LOCK 10-32 ZINC	2
13	-----	DRIVE LEVER W/ BLADE LIFT/LOWER SWITCH (ILLUS. 4)	1
14	-----	EMERGENCY STOP SWITCH (ILLUS. 18)	1
15	-----	CLUTCH CONTROL LEVER (ILLUS. 6)	1

ILLUSTRATION 13: GUIDE BAR ASSEMBLY

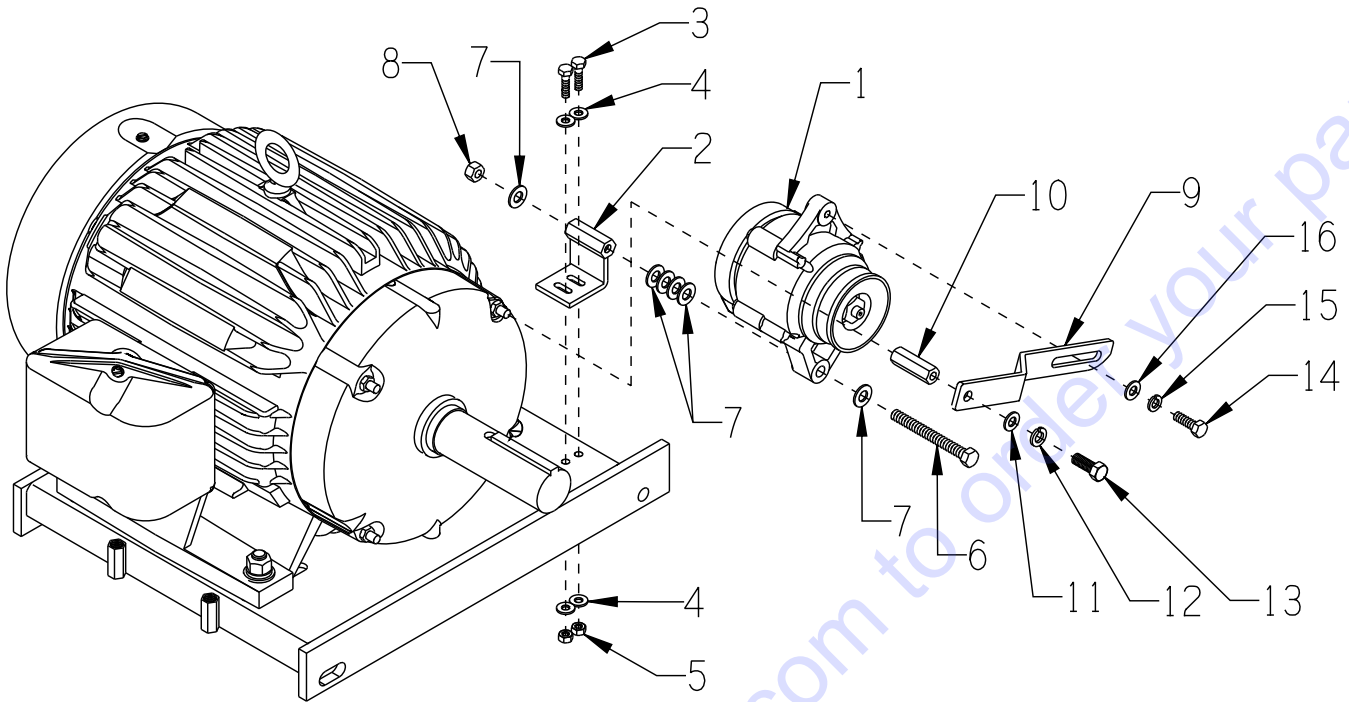
ITEM #	PART #	DESCRIPTION	QTY.
1	57119A	GUIDE BAR ASSEMBLY (INCLUDES ITEMS 2 THRU 9)	1
2	57119	GUIDE BAR	1
3	10202	SCREW, CAP 1/2-20 X 3	2
4	10154	NUT, HEX NYLON LOCK 1/2-20 ZINC	2
5	50514	POINTER, FRONT 24-1/2"	1
6	50536	WHEEL 5 X 1-1/2 X 3/4" BORE	1
7	57120	AXLE TUBE, GUIDE WHEEL	1
8	57171	SPACER TUBE 5-1/16, GUIDE BAR WHEEL	2
9	10304	SCREW, CAP 1/2-20 X 1	2
10	50555	ROPE, GUIDE BAR (NOT INCLUDED W/ GUIDE BAR ASSY.)	1

**ILLUSTRATION 14:
MOTOR & MOUNT GROUPING**

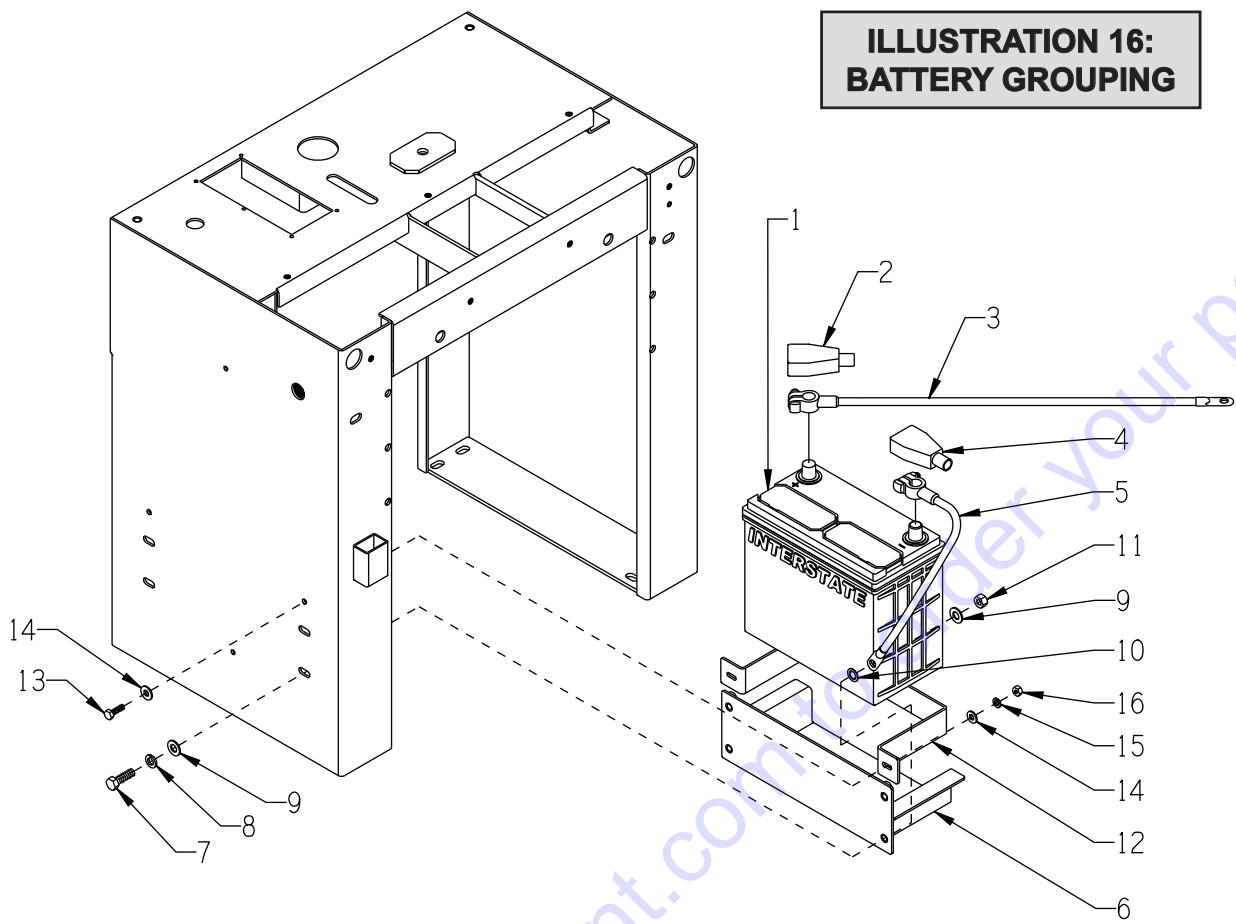
MOTOR SETTING



PARTS LISTING - ILLUSTRATION 14: MOTOR & MOUNT GROUPING			
ITEM #	PART #	DESCRIPTION	QTY.
1	16076 16085	MOTOR BALDOR 15HP-3PH-60HZ-1755RPM BALDOR 15HP-3PH-50HZ-1460RPM	1
2	50506E	MOUNT, MOTOR, SS26-15B	1
3	10498	SCREW, CAP 1/2-20 X 1-3/4	4
4	10312	WASHER, FLAT 1/2 SAE ZINC	4
5	10045	WASHER, LOCK 1/2 ZINC	4
6	10072	NUT, HEX 1/2-20 ZINC	4
7	50507	BRACKET, ENGINE/MOTOR MOUNT, SS26-15B	1
8	50507E	BRACKET, MOTOR MOUNT, SS-26 ELEC.	1
9	10308	SCREW, CAP 1/2-20 X 1-1/2	1
10	10322	SCREW, CAP 1/2-20 X 2	1
11	10312	WASHER, FLAT 1/2 SAE ZINC	6
12	10205	NUT, HEX LOCK 1/2-20 ZINC	2
13	50544	ARM, IDLER, SS-26	1
14	10324	SCREW, CAP 1/2-13 X 3-1/2	4
15	10312	WASHER, FLAT 1/2 SAE ZINC	4
16	10045	WASHER, LOCK 1/2 ZINC	4
17	10417	NUT, HEX 1/2-13 ZINC	4
18	10356	SCREW, CAP 1/2-13 X 1-1/2	2
19	10312	WASHER, FLAT 1/2 SAE ZINC	4
20	10045	WASHER, LOCK 1/2 ZINC	2
21	10417	NUT, HEX 1/2-13 ZINC	2
22	10373	BOLT, TAP 1/2-13 X 5 (FULL THREAD)	2
23	10417	NUT, HEX 1/2-13 ZINC	2
24	50710	TOGGLE PAD 7/8"D X 15/16"H X 1/2-13	2

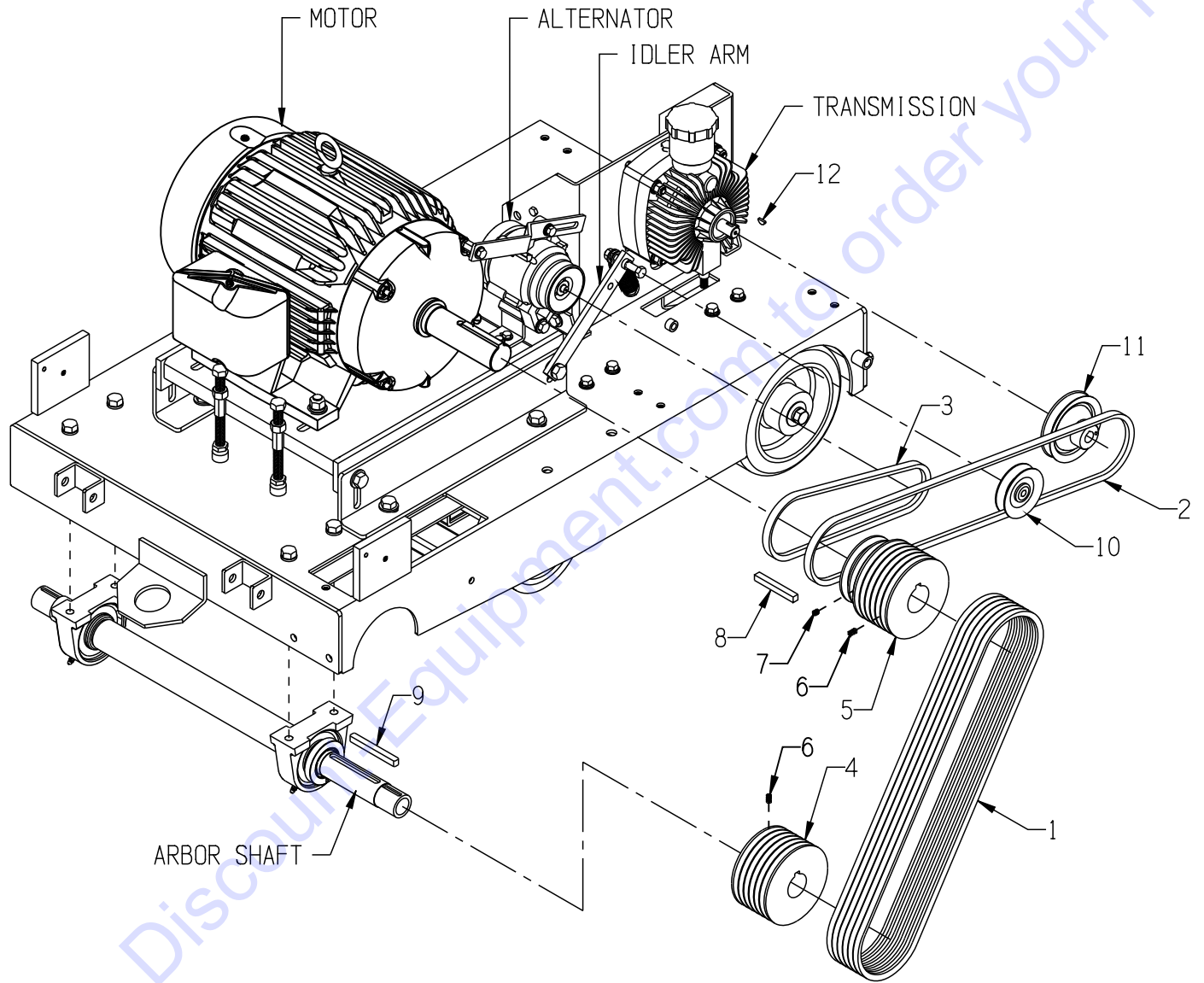
ILLUSTRATION 15: ALTERNATOR GROUPING

ITEM #	PART #	DESCRIPTION	QTY.
1	15260	ALTERNATOR, 12V/40A MINI ONE-WIRE	1
2	50672	ALTERNATOR BRACKET, SS26E	1
3	10031	SCREW, CAP 1/4-20 X 1	2
4	10602	WASHER, FLAT 1/4 SAE ZINC	4
5	10015	NUT, HEX LOCK 1/4-20 ZINC	2
6	52015	BOLT, TAP 3/8-16 X 3-1/2(FULL THD.)	1
7	10025	WASHER, FLAT 3/8 SAE ZINC (SPACE AS REQ'D.)	6
8	10810	NUT, HEX LOCK 3/8-16 ZINC	1
9	50671	ALTERNATOR TENSIONER BRKT, SS26E	1
10	10447	ROD COUPLING 3/8-16 X 1-3/4	1
11	10025	WASHER, FLAT 3/8 SAE ZINC	1
12	10811	WASHER, LOCK 3/8 ZINC	1
13	10055	SCREW, CAP 3/8-16 X 1	1
14	10806	SCREW, CAP 5/16-18 X 1	1
15	10801	WASHER, LOCK 5/16 ZINC	1
16	10213	WASHER, FLAT 5/16 SAE ZINC	1

**ILLUSTRATION 16:
BATTERY GROUPING**


ITEM #	PART #	DESCRIPTION	QTY.
1	50321	BATTERY 12 VOLT/500 CCA(POST TERM.) INTERSTATE MT-51R	1
2	10928	INSULATOR, BAT.TERM.POST (RED)	1
3	50324R	CABLE, BATTERY 4GA. X 24" (RED)	1
4	10929	INSULATOR, BAT.TERM.POST (BLACK)	1
5	50323B	CABLE, BATTERY 4GA. X 12" (BLACK)	1
6	50677	TRAY, BATTERY, SS26-35K/15B NOTE: TRAY FOR INTERSTATE MT-51R BATTERY.	1
7	10333 10907	SCREW, CAP 3/8-16 X 1-1/4 SCREW, CAP 3/8-16 X 3/4	1 3
8	10811	WASHER, LOCK 3/8 ZINC	4
9	10025	WASHER, FLAT 3/8 SAE ZINC	5
10	10453	WASHER, LOCK, INT. TOOTH 3/8"	1
11	10404	NUT, HEX 3/8-16 ZINC	1
12	50678	STRAP, BATTERY, SS26-35K/15B NOTE: STRAP FOR INTERSTATE MT-51R BATTERY.	1
13	10031	SCREW, CAP 1/4-20 X 1	2
14	10602	WASHER, FLAT 1/4 SAE ZINC	4
15	10038	WASHER, LOCK 1/4 ZINC	2
16	10015	NUT, HEX LOCK 1/4-20 ZINC	2

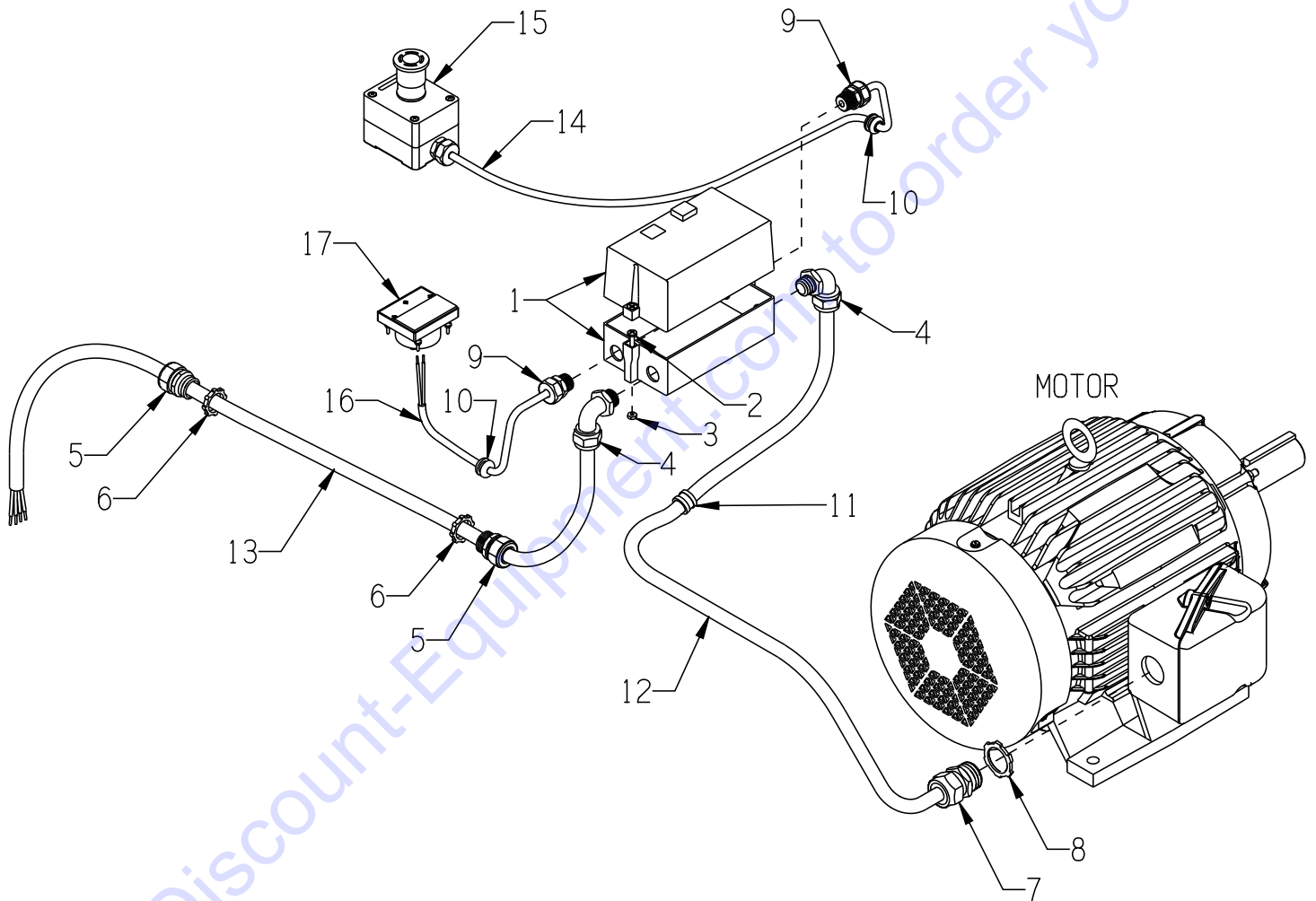
ILLUSTRATION 17: BELT DRIVE GROUPING



PARTS LISTING - ILLUSTRATION 17: BELT DRIVE GROUPING

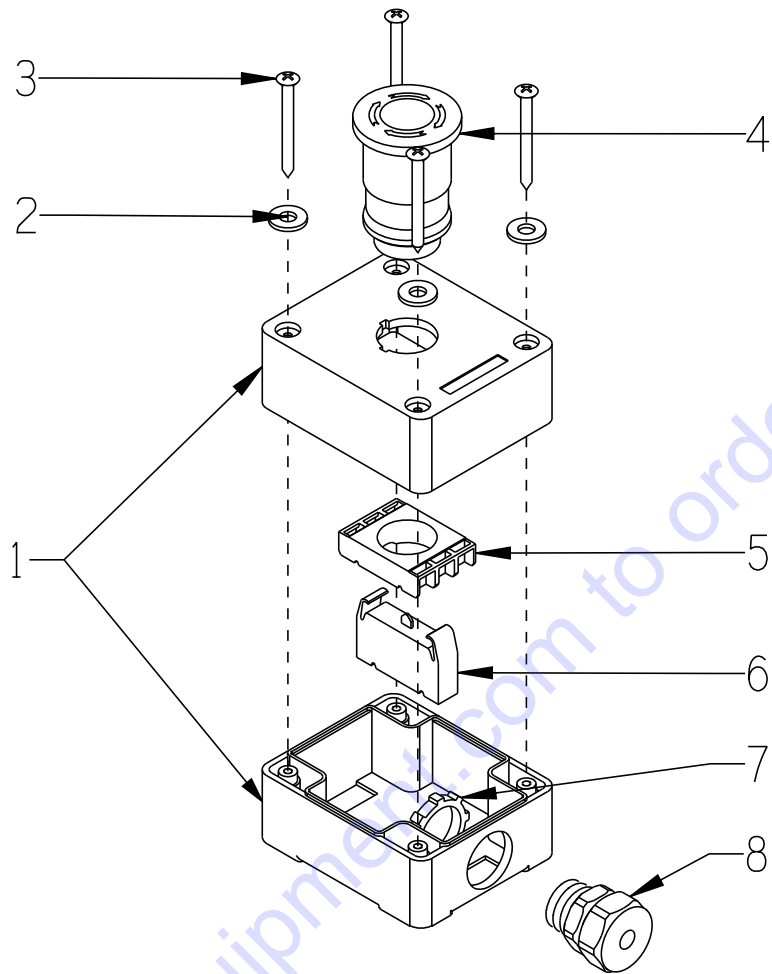
ITEM #	PART #	DESCRIPTION	QTY.
1	10235	BELT 3VX-475	6
2	10284	BELT A-55	1
3	10262	BELT A-28	1
4	10512	SHEAVE 4.80"OD X 6GR.3V X 1-7/16"B	1
5	50676	SHEAVE (2 SHEAVES WELDED TOGETHER) 50673 - 4"DIA. X (2) A-GROOVES X 1-5/8"B 50675 - 4.8"DIA. X (6) 3V-GROOVES X 1-5/8"BORE	1
6	11854	SCREW, SET 10-32 X 1/2	8
7	10139	SCREW, SET 1/4-20 X 5/16	2
8	-----	KEY 3/8SQ X 2-7/8 (INCLUDED W/ MOTOR)	1
9	10074	KEY 3/8SQ X 3-1/2	1
10	50115	IDLER PULLEY 3"OD X 1GR.AB X 3/8"B	1
11	50062	SHEAVE, TRANS. 4"OD X 1GR. X .671"B	1
12	50071	KEY, WOODRUFF 1/8 X 1/2 (#404)	1

**ILLUSTRATION 18:
STARTER & E-STOP SWITCH GROUPING**



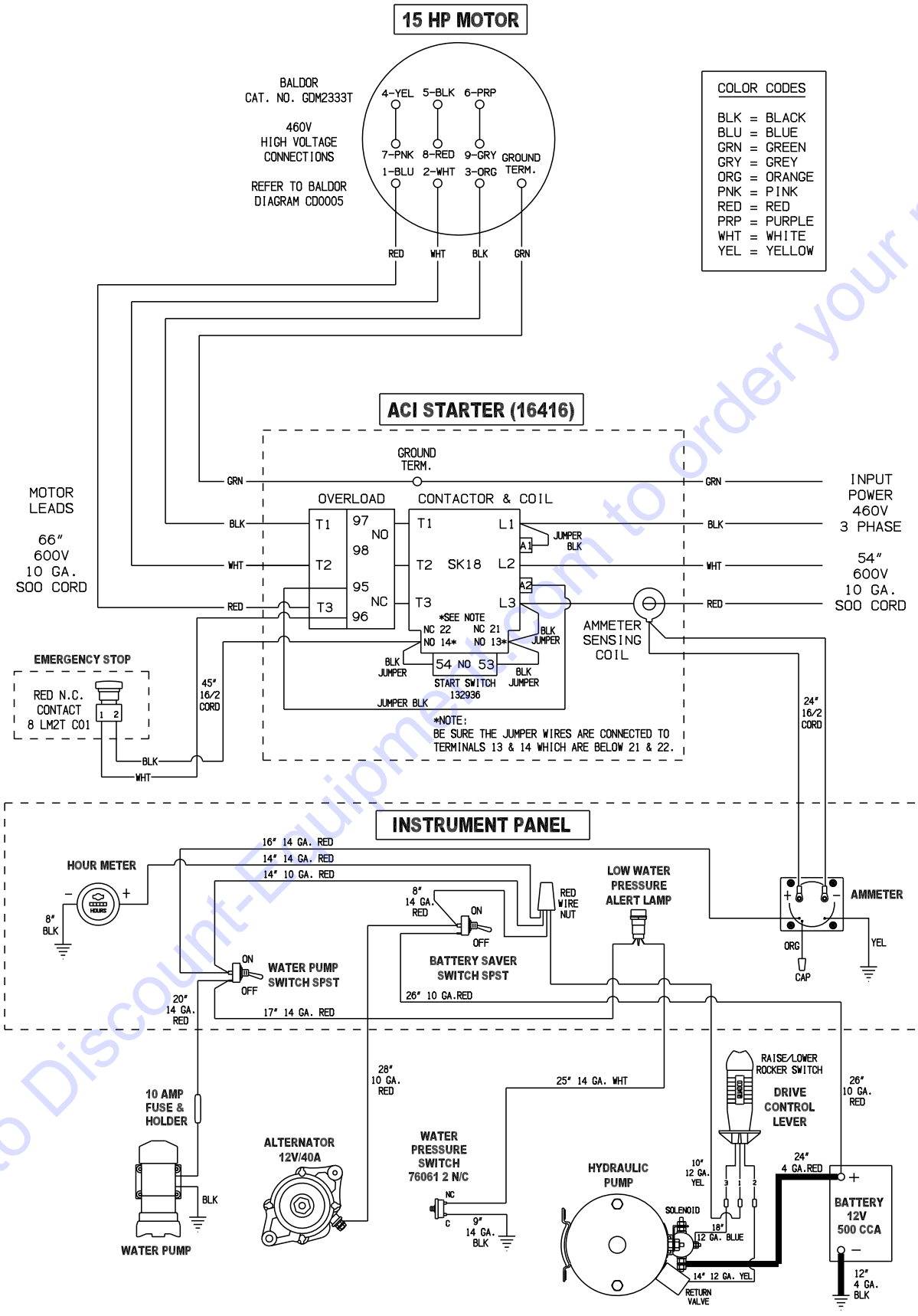
PARTS LISTING - ILLUSTRATION 18: STARTER & E-STOP SWITCH GROUPING			
ITEM #	PART #	DESCRIPTION	QTY.
1	16416	STARTER ACI #128863 START-STOP (COMPLETE)	1
		REPLACEMENT PARTS:	
	16652	STARTER BOX ONLY HNFS18-20	1
	16618	STARTER CONT./COIL ACI SK18.310-460	1
	16623	STARTER AC COIL 440/480V-60HZ, 380/415-50HZ	1
	16637	STARTER OVERLOAD RELAY 17.5-21.5A	1
2	11732	SCREW, MACHINE 10-32 X 1-3/4 RHP	2
	10384	SCREW, MACHINE 10-32 X 1 RHP	1
3	10832	NUT, KEPS LOCK 10-32 ZINC	3
4	11621	STRAIN RELIEF 90D X 1/2NPT .625-.75	2
5	10605	STRAIN RELIEF 3/4NPT X .650-.750"	2
6	10740	CONDUIT LOCK NUT 3/4 NP	2
7	16172	STRAIN RELIEF 1"NPT X .625-.750"	1
8	10770	CONDUIT LOCK NUT 1" NP (LOCATED INSIDE JUNCTION BOX)	1
9	16190	STRAIN RELIEF 1/2NPT X .250-.350"	2
10	57148	GROMMET 3/8ID X 1/8GRV. X 5/8GD	2
11	11565	CLAMP, LOOM, 5/8" (SAE SIZE 10)	2
12	50680	CORD, MOTOR 10/4 600V X 66"LOA	1
13	50681	CORD, POWER 10/4 600V X 54"LOA	1
14	50682	CORD, E-STOP 16/2 300V X 45"LOA	1
15	-----	E-STOP SWITCH (SEE ILLUS. 19 FOR BREAKDOWN)	1
16	50683	CORD, AMMETER 16/2 300V X 24"LOA	1
17	16543	AMMETER, AC ANALOG 0-50 AMP	1

ILLUSTRATION 19: EMERGENCY STOP SWITCH



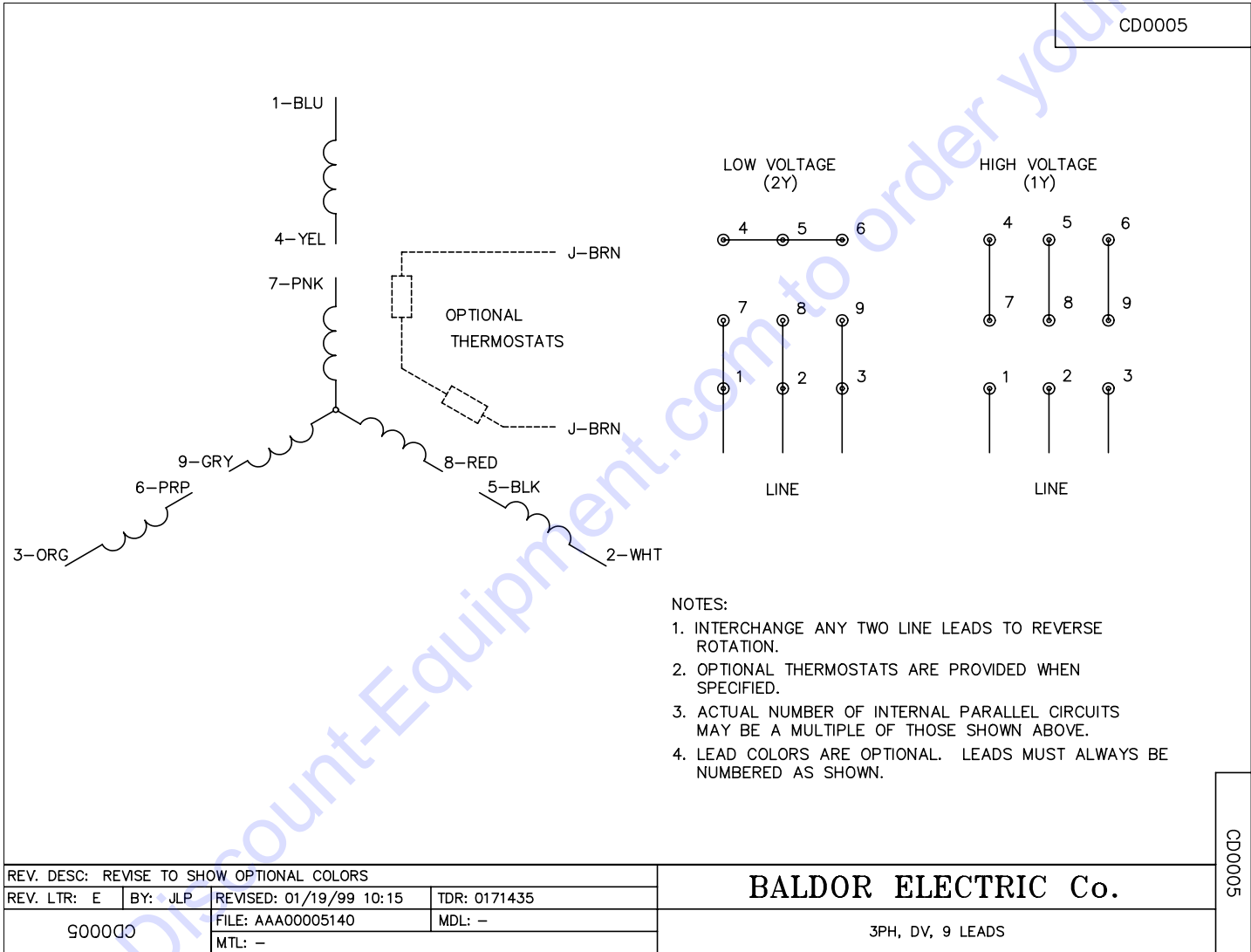
ITEM #	PART #	DESCRIPTION	QTY.
1	16668	ENCLOSURE, 1 HOLE ACI PBE1	1
2	10892	WASHER, FLAT #10 SS .218 X .437	4
3	-----	SCREW (INCLUDED W/ ENCLOSURE, ITEM 1)	4
4	15275	PUSHBUTTON, TURN TO RELEASE E-STOP	1
5	15276	MOUNTING ADAPTER, PUSHBUTTON	1
6	15278	CONTACT ELEMENT, NC RED LM2TC01	1
7	10790	CONDUIT LOCK NUT 1/2 NP	1
8	16190	STRAIN RELIEF 1/2NPT X .250-.350"	1

WIRING DIAGRAM FOR 60Hz MODEL

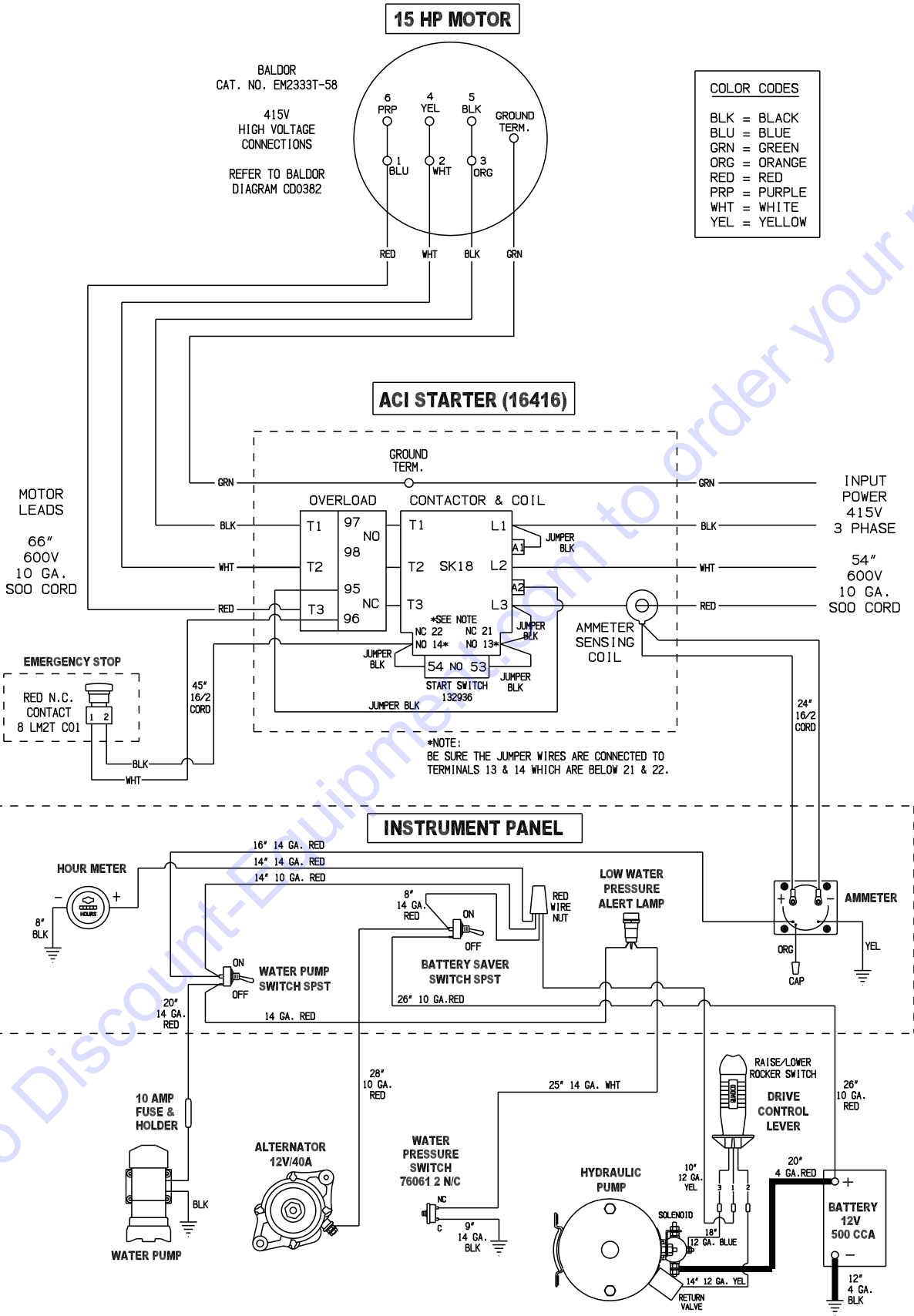


WIRING DIAGRAM FOR 60Hz MOTOR

CD0005

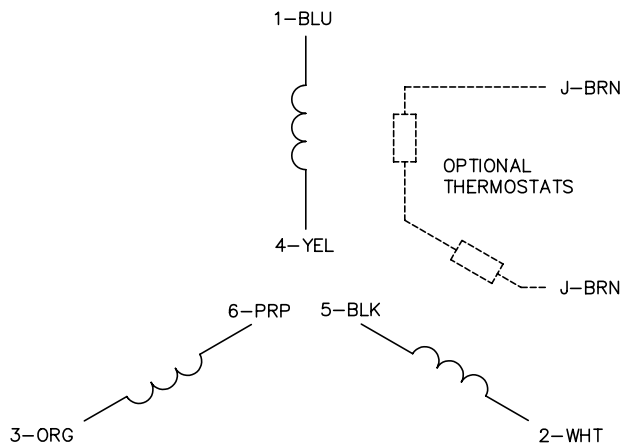


WIRING DIAGRAM FOR 50Hz MODEL

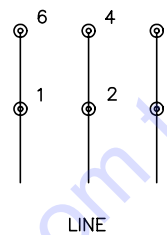


WIRING DIAGRAM FOR 50Hz MOTOR

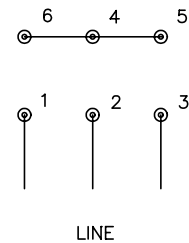
CD0382



RUN CONNECTION (1D)



START CONNECTION (1Y)



NOTES:

1. INTERCHANGE ANY TWO LINE LEADS TO REVERSE ROTATION.
2. OPTIONAL THERMOSTATS ARE PROVIDED WHEN SPECIFIED.
3. ACTUAL NUMBER OF INTERNAL PARALLEL CIRCUITS MAY BE A MULTIPLE OF THOSE SHOWN ABOVE.
4. LEAD COLORS ARE OPTIONAL. LEADS MUST ALWAYS BE NUMBERED AS SHOWN.
5. FOR ACROSS-THE-LINE STARTING, USE 'RUN' CONNECTION.

REV. DESC: ADD NOTE 5 FOR DOL STARTING			
REV. LTR: E	BY: JLP	REVISED: 11/30/00 2:26	TDR: 0226155
CD0382		FILE: AAA00005243	REF: --
		MTL: --	

BALDOR ELECTRIC Co.

3PH, SV, 6 LEADS, Y START/D RUN

CD0382



PARTS FINDER

**Search Website
by Part Number**



**Search Manual
Library For Parts
Manual & Lookup Part
Numbers – Purchase
or Request Quote**

Search Manuals

Enter your information to help us find the right parts manual for your machine.

* Brand:

* Model:

* Serial:

* Part Number:

SEARCH

**Can't Find Part or
Manual? Request Help
by Manufacturer,
Model & Description**

Parts Order Form

Please fill in the following information to help us find the right part for your machine.

Manufacturer:	<input type="text"/>
Model:	<input type="text"/>
Description:	<input type="text"/>
Part Number:	<input type="text"/>
Quantity:	<input type="text"/>
Notes:	<input type="text"/>
Submit	<input type="button" value="Submit"/>

Discount-Equipment.com is your online resource for quality parts & equipment.

Florida: **561-964-4949** Outside Florida TOLL FREE: **877-690-3101**

Need parts?

Click on this link: <http://www.discount-equipment.com/category/5443-parts/> and choose one of the options to help get the right parts and equipment you are looking for. Please have the machine model and serial number available in order to help us get you the correct parts. If you don't find the part on the website or on one of the online manuals, please fill out the request form and one of our experienced staff members will get back to you with a quote for the right part that your machine needs.

We sell worldwide for the brands: Genie, Terex, JLG, MultiQuip, Mikasa, Essick, Whiteman, Mayco, Toro Stone, Diamond Products, Generac Magnum, Airman, Haulotte, Barreto, Power Blanket, Nifty Lift, Atlas Copco, Chicago Pneumatic, Allmand, Miller Curber, Skyjack, Lull, Skytrak, Tsurumi, Husquvarna Target, Stow, Wacker, Sakai, Mi-T-M, Sullair, Basic, Dynapac, MBW, Weber, Bartell, Bennar Newman, Haulotte, Ditch Runner, Menegotti, Morrison, Contec, Buddy, Crown, Edco, Wyco, Bomag, Laymor, EZ Trench, Bil-Jax, F.S. Curtis, Gehl Pavers, Heli, Honda, ICS/PowerGrit, IHI, Partner, Imer, Clipper, MMD, Koshin, Rice, CH&E, General Equipment, Amida, Coleman, NAC, Gradall, Square Shooter, Kent, Stanley, Tamco, Toku, Hatz, Kohler, Robin, Wisconsin, Northrock, Oztec, Toker TK, Rol-Air, APT, Wylie, Ingersoll Rand / Doosan, Innovatech, Con X, Ammann, Mecalac, Makinex, Smith Surface Prep, Small Line, Wanco, Yanmar