



STARTING SERIAL # 061210174

# GASOLINE POWERED 14" MASONRY SAW

## PARTS LIST MANUAL



\*SHOWN WITH OPTIONAL PROCART

### BB14G PORTABLE MASONRY SAWS

SKU #	MODEL	POWER OPTION
26300	BB14G-5.5H	HONDA 5.5 HP GX160 GASOLINE ENGINE W/ CYCLONE AIR CLEANER
26400	BB14G-6.5H	HONDA 6.5 HP GX200 GASOLINE ENGINE W/ CYCLONE AIR CLEANER
26500	BB14G-9H	HONDA 9 HP GX270 GASOLINE ENGINE W/ CYCLONE AIR CLEANER
26700	BB14G-6S	SUBARU ROBIN 6 HP EX17 GASOLINE ENGINE W/ CYCLONE AIR CLEANER
26800	BB14G-7S	SUBARU ROBIN 7 HP EX21 GASOLINE ENGINE W/ CYCLONE AIR CLEANER
26900	BB14G-9S	SUBARU ROBIN 9 HP EX27 GASOLINE ENGINE W/ CYCLONE AIR CLEANER

Printed in USA

©2006

# PARTS FINDER

**Search Website  
by Part Number**



**Search Manual  
Library For Parts  
Manual & Lookup Part  
Numbers – Purchase  
or Request Quote**

**Search Manuals**

Enter your information to search for a manual or to purchase a manual or parts.

\* Brand:

\* Model:

\* Serial:

\* Part Number:

SEARCH

**Can't Find Part or  
Manual? Request Help  
by Manufacturer,  
Model & Description**

**Parts Order Form**

Please fill in the following information to request help finding a part or manual.

Manufacturer:

Model:

Description:

Quantity:

Part Number:

Part Name:

Part Description:

Part Location:

Part Condition:

Part Material:

Part Color:

Part Weight:

Part Dimensions:

Part Notes:

Submit

Discount-Equipment.com is your online resource for quality parts & equipment.

Florida: **561-964-4949** Outside Florida TOLL FREE: **877-690-3101**

**Need parts?**

Click on this link: <http://www.discount-equipment.com/category/5443-parts/> and choose one of the options to help get the right parts and equipment you are looking for. Please have the machine model and serial number available in order to help us get you the correct parts. If you don't find the part on the website or on one of the online manuals, please fill out the request form and one of our experienced staff members will get back to you with a quote for the right part that your machine needs.

We sell worldwide for the brands: Genie, Terex, JLG, MultiQuip, Mikasa, Essick, Whiteman, Mayco, Toro Stone, Diamond Products, Generac Magnum, Airman, Haulotte, Barreto, Power Blanket, Nifty Lift, Atlas Copco, Chicago Pneumatic, Allmand, Miller Curber, Skyjack, Lull, Skytrak, Tsurumi, Husquvarna Target, Stow, Wacker, Sakai, Mi-T-M, Sullair, Basic, Dynapac, MBW, Weber, Bartell, Bennar Newman, Haulotte, Ditch Runner, Menegotti, Morrison, Contec, Buddy, Crown, Edco, Wyco, Bomag, Laymor, EZ Trench, Bil-Jax, F.S. Curtis, Gehl Pavers, Heli, Honda, ICS/PowerGrit, IHI, Partner, Imer, Clipper, MMD, Koshin, Rice, CH&E, General Equipment, Amida, Coleman, NAC, Gradall, Square Shooter, Kent, Stanley, Tamco, Toku, Hatz, Kohler, Robin, Wisconsin, Northrock, Oztec, Toker TK, Rol-Air, APT, Wylie, Ingersoll Rand / Doosan, Innovatech, Con X, Ammann, Mecalac, Makinex, Smith Surface Prep, Small Line, Wanco, Yanmar

READ AND UNDERSTAND THE OPERATORS INSTRUCTION MANUAL THOROUGHLY BEFORE ATTEMPTING TO OPERATE THIS EQUIPMENT. Death or serious injury could occur if this machine is used improperly.



## SAFETY MESSAGES



The safety instructions are preceded by a graphic alert message of DANGER, WARNING, or CAUTION.



Indicates an imminent hazard which, if not avoided, will result in death or serious injury.



Indicates an imminent hazard which, if not avoided, can result in death or serious injury.



Indicates hazards which, if not avoided, could result in serious injury and or damage to the equipment.

## GASOLINE Powered Equipment



- Do not operate gasoline powered equipment without adequate ventilation. Carbon monoxide is an invisible, odorless gas that can kill.

## ELECTRICAL Powered Equipment



- ELECTRICAL HAZARD** - Be sure equipment is properly grounded. Failure to comply could kill or result in serious injury.



The engine exhaust from this product contains chemicals known to the State of California to cause cancer, birth defects or other reproductive harm.

## GENERAL INSTRUCTIONS



- You must read and understand the operators instruction manual and all other manuals associated with this machine. For your safety and the safety of others around you, it is extremely important to fully understand how to operate this machine in the way it was intended. Different model machines or older/newer versions of the same model may have different parts and controls that you need to understand. If instructions are not readable or available DO NOT USE this machine and contact Discount-equipment for a replacement Manual.
- You must be able to physically handle the bulk weight and power of this machine. If not properly controlled this machine can cause death or serious injury.
- Do not operate this machine in an impaired mental state. You must be able to exercise good judgement and reactions to maintain a safe working environment.
- This is a "one person" machine which means only one operator can be operating the machine at any one time. For the safety of others, maintain a safe operating distance to other personnel. Your work area should be defined and appropriately marked so bystanders and coworkers do not stand or walk near this machine and end up seriously injured by flying debris or exposing them to harmful noise or dust.
- This equipment is for Commercial use. Although this is a "one person" machine your work team should understand how to shut this machine off and quickly get medical help if an accident strikes the operator.
- Keep all guards in place during operation. The guards are to provide protection from inadvertent contact with dangerous moving parts, pinch points, or hot surfaces.
- Wear appropriate Personal Protective Equipment (PPE) including safety glasses, safety boots, work gloves, respiratory protection, hearing protection, and head protection. Do not wear loose clothing that can get tangled in moving parts. Failure to do so could result

in dismemberment or death. **Wear an approved respirator when removing hazardous materials or when grinding/cutting dry materials. Some dust particles such as concrete dust can contain silicate particles which can cause silicosis (a very serious lung disease). Contact NIOSH or OSHA for further details. When wet grinding/cutting, avoid contact with the concrete/asphalt slurry which can cause serious skin irritations.**

- You must maintain this machine per the maintenance schedule in the operator manual. Remember before adjusting, servicing, or fueling this machine, disconnect the source of power to the machine by disconnecting the spark plug (Gas models), or by unplugging the electrical power cord (electric models) or air hose (Pneumatic models) AT THE MACHINE so you can assure yourself it remains unplugged while you are working on it. Do not modify this machine. Use only genuine EDCO parts and accessories. Repairs and service should be performed by approved EDCO dealers or authorized technicians.
- You should look carefully around the area before you begin work so you can identify potential hazards such as deck inserts, pipes, columns, openings, electrical cords or outlets, or any other objects protruding from the slab surface.
- This machine has no brain so you must use your own. There is no substitute for safety. The safety decals on the machine are to serve as a reminder for information you must already know before you begin using this machine. Take a moment to reread the safety decals each time you use the machine. If your machine is missing any decals, contact Discount-equipment for a replacement.

# PARTS LIST MANUAL

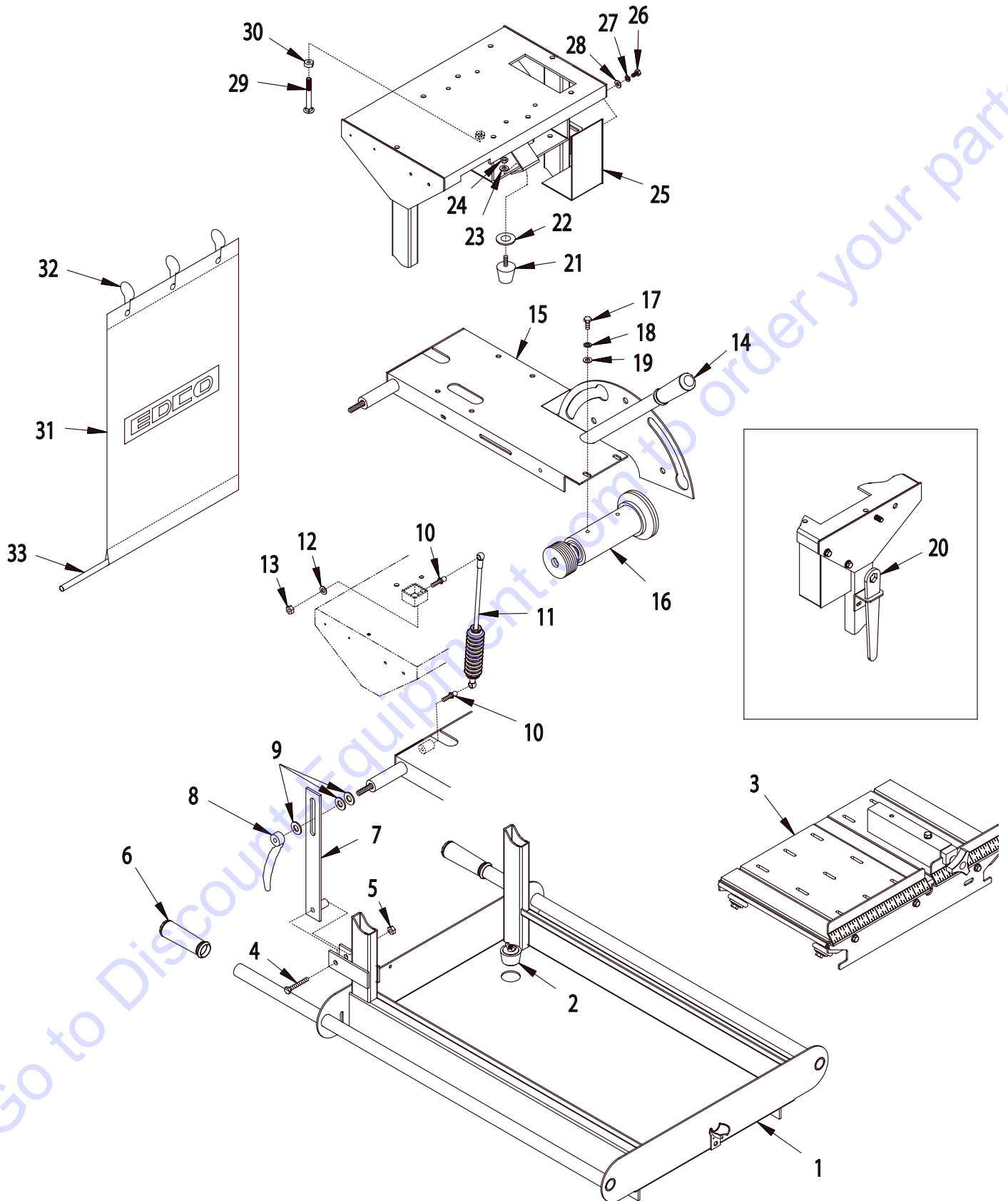
## MODEL BB14G

<u>Section</u>	<u>Page Number</u>
Safety Messages / General Instructions . . . . .	2
How To Order Replacement Parts . . . . .	3
Illustration 1 : Main Grouping . . . . .	4,5
Illustration 2 : Arbor Assembly . . . . .	6
Illustration 3 : Rolling Table Assembly . . . . .	7
Illustration 4 : Water Pump & Blade Guard Grouping . . . . .	8,9
Illustration 5 : Engine Grouping (5.5 & 6.5 HP Honda) . . . . .	10,11
Illustration 6: Engine Grouping (9 HP Honda) . . . . .	12,13
Illustration 7 : Belt & Drive Shaft Grouping . . . . .	14
Illustration 8 : Optional Vacuum Hood System . . . . .	15
Illustration 9 : Optional Stand & Foot Pedal Assembly Grouping . . . . .	16
Illustration 10: Optional Procart . . . . .	17
Illustration 11 : Water Pump Assembly . . . . .	18
Illustration 12 : Water Filter Assembly . . . . .	19
Limited Equipment Warranty of Sale . . . . .	Back Page

Go to Discount-Equipment.com to order your parts

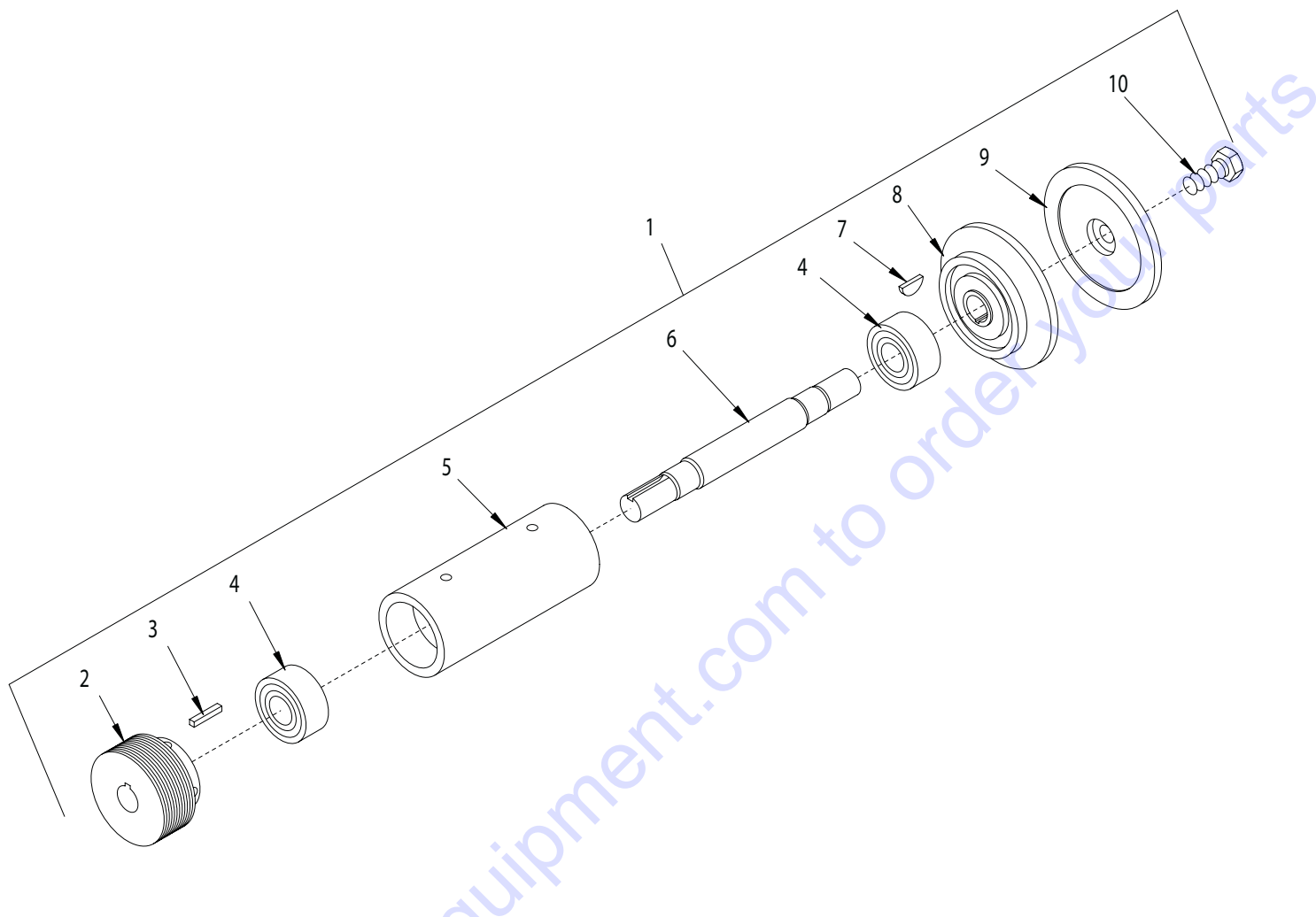


ILLUSTRATION 1 : MAIN GROUPING



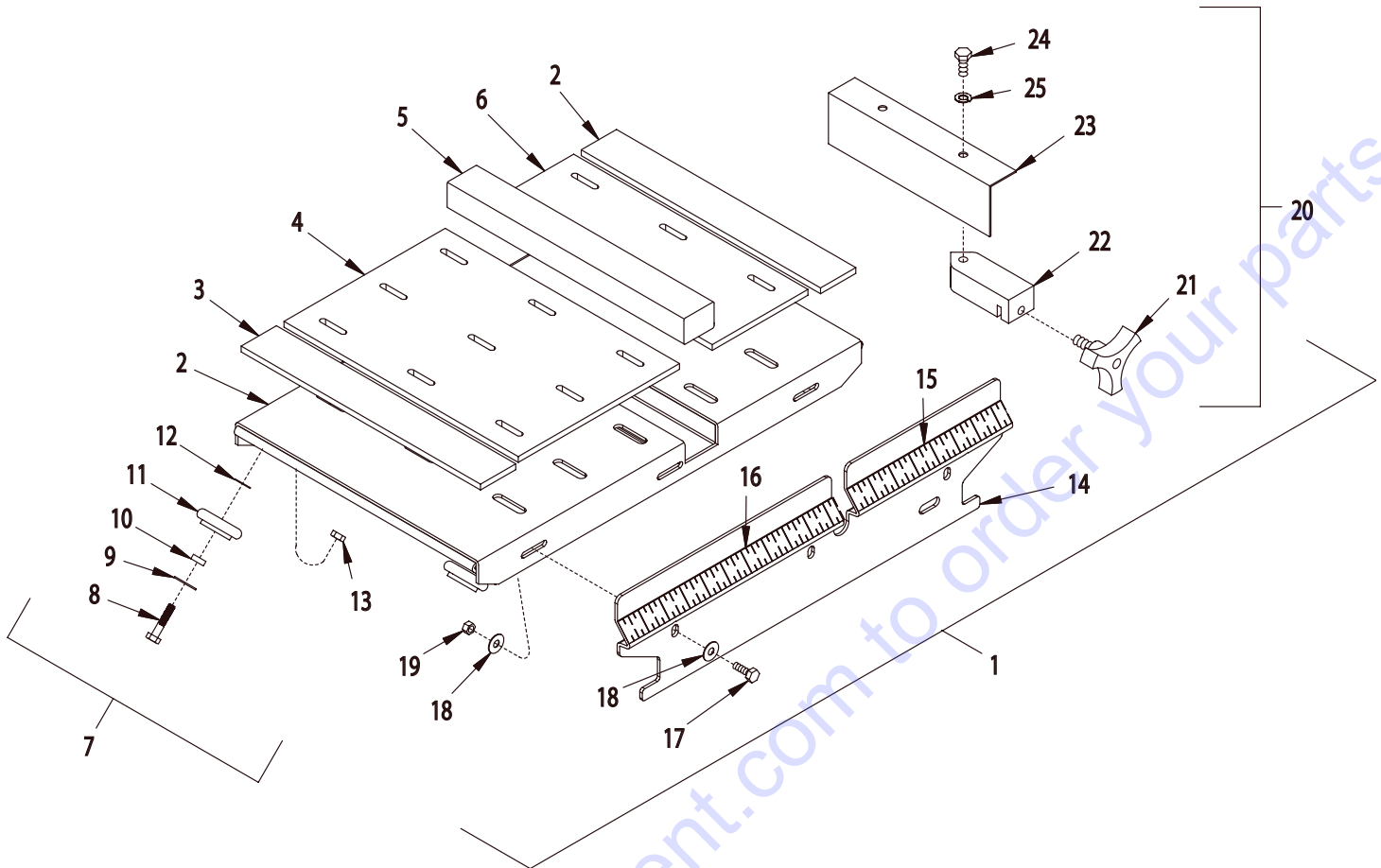
PARTS LISTING - ILLUSTRATION 1 : MAIN GROUPING			
ITEM#	PART#	DESCRIPTION	QTY.
1	40680	PAN w/ ENGINE DECK	1
2	40378	STOPPER ASSEMBLY 1-1/2"	1
3	40675A	TABLE COMPLETE, ROLLING (REFER TO ILLUSTRATION 3 FOR ASSY.)	1
4	10029	SCREW, CAP 3/8-24 X 1-3/4	1
5	10004	NUT, LOCK 3/8-24	1
6	10608	GRIP, HAND 1" MODEL AT	2
7	40609	LOCKING BAR, ARBOR HEIGHT	1
8	40358	NUT, TAIL HANDLE 1/2-13	1
9	10312	WASHER, FLAT 1/2	3
10	43011	STUD, 10mm BALL, 5/16-18x.662	2
11	43010	SPRING ASSEMBLY COMPLETE, GAS (SEE BELOW FOR BREAKDOWN)	1
		<i>INDIVIDUAL REPLACEMENT PARTS:</i>	
	43007	SPRING, GAS 1629EM	1
	43008	BELLOWS, GAS SPRING (DUST BOOT)	1
	10982	TIE, CABLE, BLACK NYLON 11-1/4"	2
	43009	CLIP, SAFETY, GAS SPRING	2
12	10801	WASHER, LOCK 5/16	1
13	10054	NUT 5/16-18	1
14	10608	GRIP, HAND 1" MODEL AT	1
15	40606	DECK, ARBOR	1
16	40670	ARBOR ASSY. W/ SHEAVE (REFER TO ILLUSTRATION 2 FOR ASSY.)	1
17	10048	SCREW, CAP 5/16-24x3/4	4
18	10801	WASHER, LOCK 5/16	4
19	10213	WASHER, FLAT 5/16	2
20	53021	WRENCH, ARBOR, 3/4" BOX END	1
21	10931	MOUNT, TAPERED RUBBER 5/16-18	1
22	10009	WASHER, FLAT 3/4	1
23	10801	WASHER, LOCK 5/16	1
24	10054	NUT 5/16-18	1
25	40682	COVER, JACKSHAFT SHEAVE	1
26	10018	SCREW, CAP 1/4-20x3/4	2
27	10038	WASHER, LOCK 1/4	2
28	10602	WASHER, FLAT 1/4	2
29	10909	BOLT, CARRIAGE 3/8-16 X 3 FULL THD.	1
30	10404	NUT 3/8-16	1
31	40375	CURTAIN 15"x28" WITH LOGO	1
32	40376	HOOK, CURTAIN	3
33	40377	CURTAIN ROD 1/2" DIA.x13"L	1

**ILLUSTRATION 2 : ARBOR ASSEMBLY**



ITEM #	PART#	DESCRIPTION	QTY.
1	40670	ARBOR ASSEMBLY W/ SHEAVE (ITEMS 2-10)	1
2	40649	SHEAVE 2.65" ODx10 GR.J x 3/4" BORE	1
3	10060	KEY 3/16" SQ. x 1-1/4"L	1
4	40018	BEARING, RADIAL BALL 20x47x20.6	2
5	40607	ARBOR, HOUSING	1
6	40608	ARBOR, SHAFT	1
7	40036	KEY, WOODRUFF 1/8 x 3/8 (#403)	1
8	40022	ARBOR, BACKING PLATE, MASONRY SAW	1
9	40023	ARBOR, BLADE RETAINING CAP, MASONRY SAW	1
10	10321	SCREW, CAP 1/2-20 x 1-1/4	1

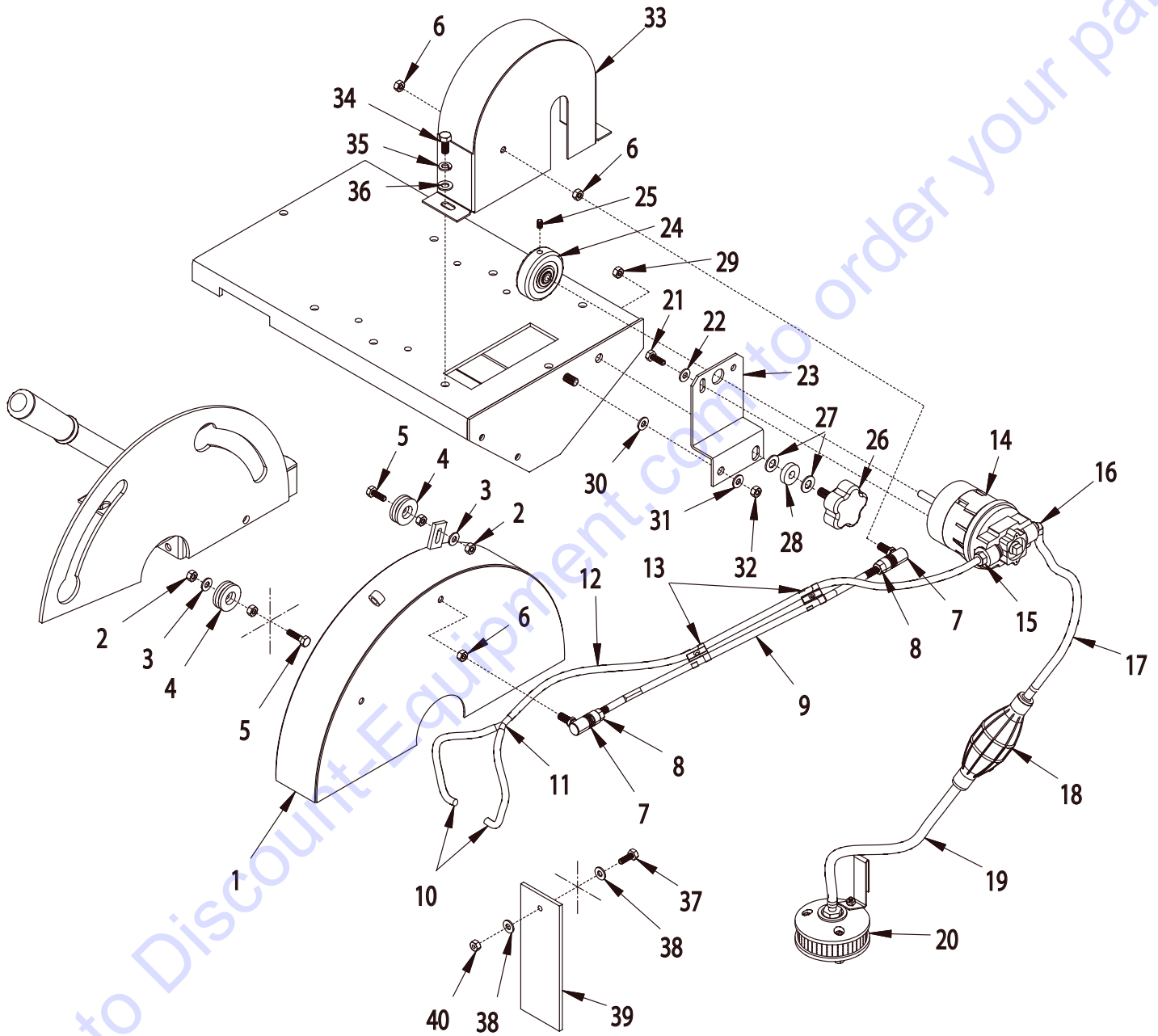
## ILLUSTRATION 3 : ROLLING TABLE ASSEMBLY



ITEM #	PART #	DESCRIPTION	QTY.
1	40675A	TABLE COMPLETE, ROLLING (ITEMS 2-20)	1
2	40679	RUBBER PAD 11-5/8 X 1-3/4 X 1/4	2
3	40675	TABLE, ROLLING	1
4	40676	RUBBER PAD 11-5/8 X 8	1
5	40678	WOODEN CUT BLOCK	1
6	40677	RUBBER PAD 11-5/8 X 4-3/4	1
7	40605K	WHEEL KIT, ROLL TABLE (INCLUDES ITEMS 8 THRU 13)	4
8	10606	SCREW, CAP 5/16-18 X 1-1/4	4
9	40667	WASHER, FLAT .328ID X .875OD X .060	4
10	40668	SPACER, STEEL 5/8OD X .328ID X .180	4
11	40605A	WHEEL W/ BEARING, ROLL TABLE	4
12	10213	WASHER, FLAT 5/16	4
13	10807	NUT, LOCK 5/16-18	4
14	40603	TABLE FRONT PANEL, ROLL	1
15	40424	RULE, ADHESIVE BACKED 1-7, L-R	1
16	40423	RULE, ADHESIVE BACKED 1-13, R-L	1
17	10018	SCREW, CAP 1/4-20X3/4	3
18	10602	WASHER, FLAT 1/4	6
19	10861	NUT, KEPS 1/4-20	3
20	40604A	CUT GUIDE ASSEMBLY COMPLETE (ITEMS 21 THRU 24)	1
21	40425	KNOB, 3 PRONG W/ 3/8-16X5/8 STUD	1
22	42015	BLOCK, CUT GUIDE, MASONRY SAW	1
23	40604	BRACKET, CUT GUIDE	1
24	10053	SCREW, CAP 5/16-18X3/4	1
25	10801	WASHER, LOCK 5/16	1

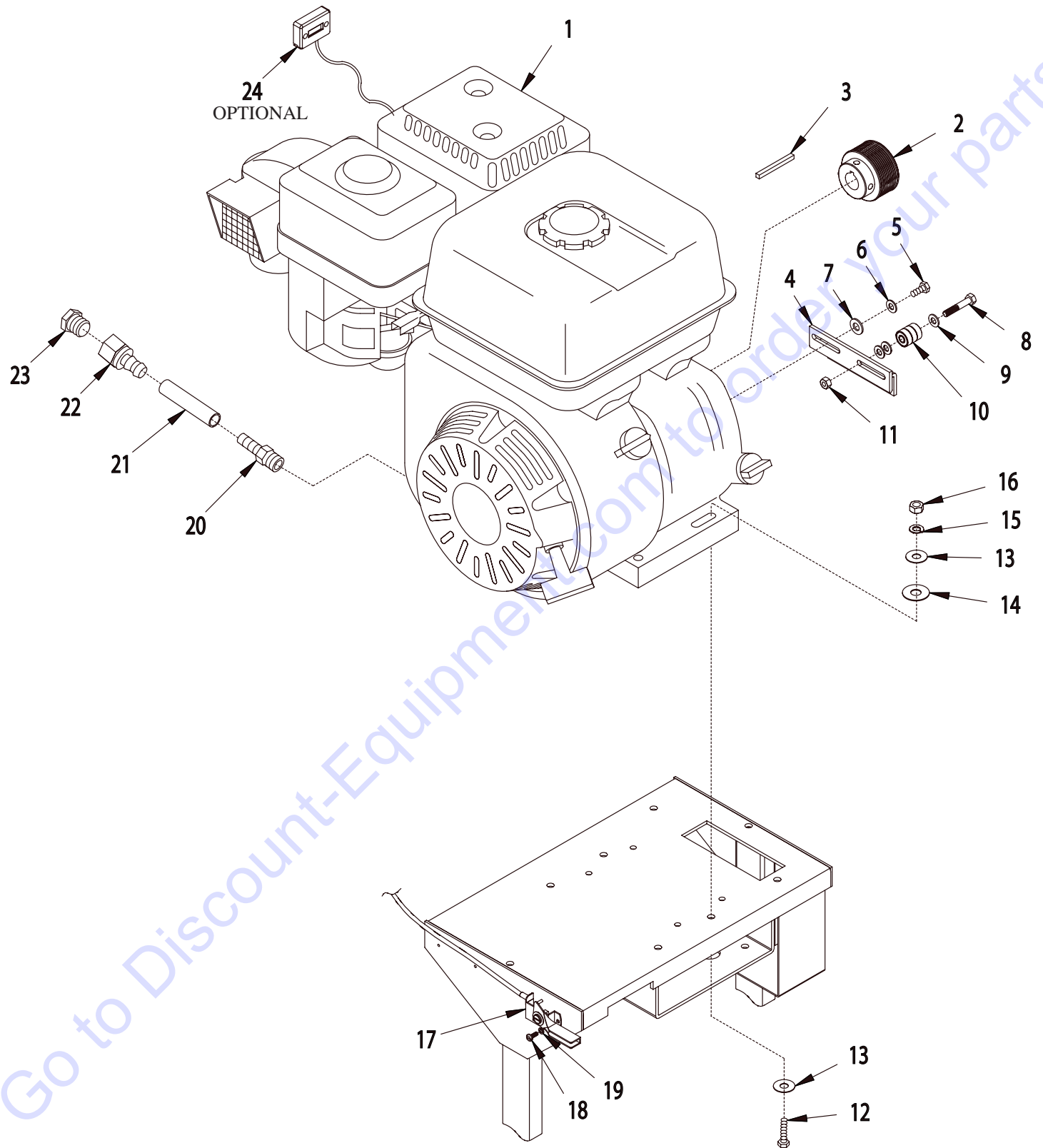


ILLUSTRATION 4 : WATER PUMP & BLADE GUARD GROUPING



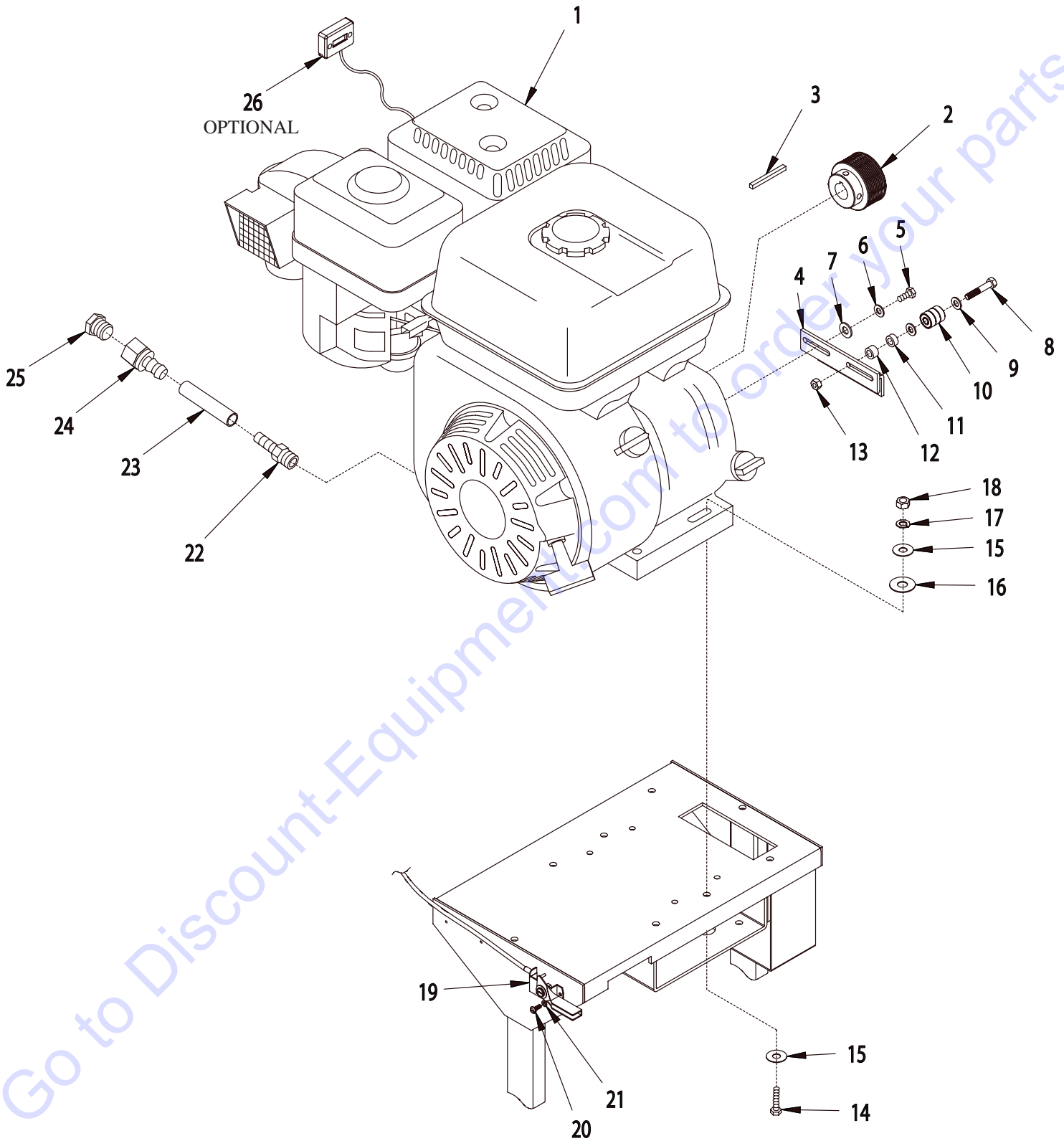
PARTS LISTING - ILLUSTRATION 4 : WATER PUMP & BLADE GUARD GROUPING			
ITEM #	PART #	DESCRIPTION	QTY.
1	40615	GUARD, BLADE 14"	1
2	10015	NUT, LOCK 1/4-20	6
3	10602	WASHER, FLAT 1/4 SAE	3
4	40636	SLIDER GUIDE, BLADE GUARD	3
5	10031	SCREW, CAP 1/4-20x1	3
6	10424	NUT 5/16-24	3
7	40617	B.J.LINKAGE, QUICK-DISC. 5/16-24	2
8	10424	NUT 5/16-24	2
9	40616	ROD, BLADE GUARD LEVELER	1
10	40654	HOSE 1/4" I.D. x 6" L	2
11	99323	BARBED FITTING, "Y" 1/4" HOSE (PLASTIC)	1
12	40686	HOSE 1/4" I.D. x 23" L	1
13	40639	STRAP, TUBE/HOSE 5/16" - 3/8"	2
14	40685	PUMP ASSY., WATER (REFER TO ILLUS. 11 FOR BREAKDOWN, INCLUDES ITEMS 15 & 16)	1
15	40337	BARB, 1/4 HOSE X 3/8 MPT (BRASS)	1
16	36924	BARB ELBOW 90, 5/16 HOSE X 3/8 MPT	1
17	40368	HOSE 5/16" I.D. x 7" L	1
18	40049	BULB, PRIMER 5/16"	1
19	40687	HOSE 5/16" I.D. x 12" L	1
20	40301	FILTER ASSEMBLY, WATER (REFER TO ILLUS. 12 FOR BREAKDOWN)	1
21	10018	SCREW, CAP 1/4-20 x 3/4	2
22	10602	WASHER, FLAT 1/4	2
23	40683	BRACKET, WATER PUMP	1
24	40684M	WHEEL, WATER PUMP DRIVE 3 X 5/16" B	1
25	10161	SCREW, SET 1/4-28 x 5/16	1
26	51230	KNOB, STAR CLAMPING 3/8-16 X 1" STUD	1
27	10025	WASHER, FLAT 3/8	2
28	42224	BUSHING, RUBBER 1" OD X 3/8" ID X 1/8	1
29	10810	NUT, LOCK 3/8-16	1
30	64159	SHIM 3/8 X 5/8 X .031	1
31	10025	WASHER, FLAT 3/8	2
32	10810	NUT, LOCK 3/8-16	1
33	40681	COVER, ENGINE BELT	1
34	10053	SCREW, CAP 5/16-18 X 3/4	2
35	10801	WASHER, LOCK 5/16	2
36	10213	WASHER, FLAT 5/16	2
37	10018	SCREW, CAP 1/4-20 X 3/4	1
38	10602	WASHER, FLAT 1/4 SAE	2
39	40012	FLAP, SPLASH 2-1/2 X 7	1
40	10015	NUT, LOCK 1/4-20	1

**ILLUSTRATION 5 : ENGINE GROUPING (5.5 THRU 7 HP)**



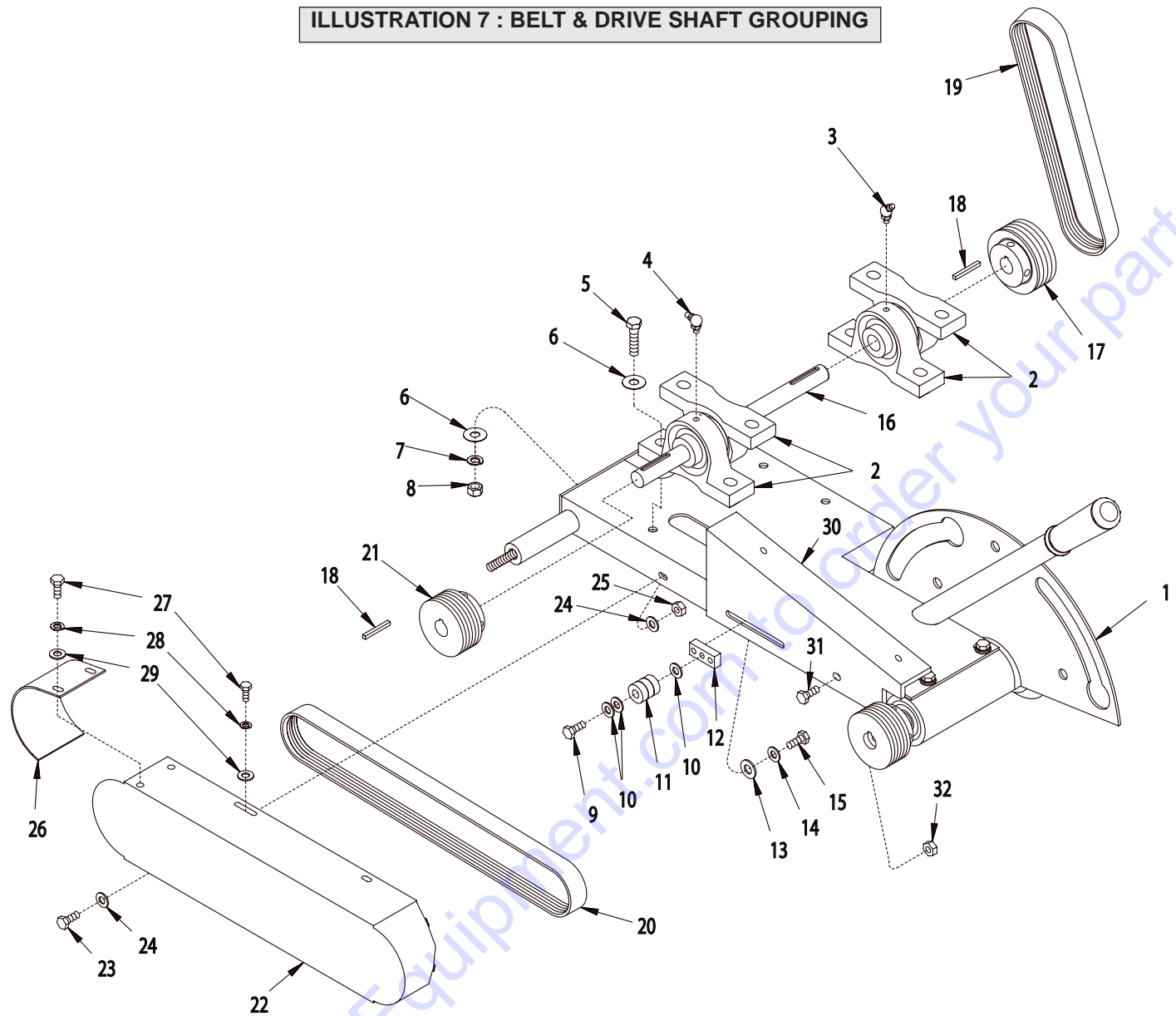
PARTS LISTING - ILLUSTRATION 5 : ENGINE GROUPING (5.5 THRU 7 HP)			
ITEM#	PART#	DESCRIPTION	QTY.
1		ENGINE W/ CYCLONE AIR CLEANER	1
	40387	HONDA 5.5HP GX160	
	15048	HONDA 6.5HP GX 200	
	15061	SUBARU ROBIN 6 HP EX17	
	15062	SUBARU ROBIN 7 HP EX21	
2	40648	SHEAVE 2.24"O.D.x10 GR.J x 3/4" BORE	1
3	10168	KEY 3/16" SQ.x2"L	1
4	40658	TENSIONER BRKT., BELT	1
5	10048	SCREW, CAP 5/16-24x3/4	2
6	10801	WASHER, LOCK 5/16	2
7	10213	WASHER, FLAT 5/16	2
8	10204	SCREW, CAP 5/16-18x1-3/4	1
9	10213	WASHER, FLAT 5/16 SAE	3
10	40391	BEARING, RADIAL BALL 5/16X7/8X11/32	3
11	10807	NUT, LOCK 5/16-18	1
12	10342	SCREW, CAP 5/16-18x1-1/2	4
13	10213	WASHER, FLAT 5/16	8
14	10025	WASHER, FLAT 3/8 SAE	4
15	10801	WASHER, LOCK 5/16	4
16	10054	NUT 5/16-18	4
17	40388	CABLE, THROTTLE, LEVER-TYPE 24"	1
18	10877	SCREW, CAP STSHW 10-24 X 1/2	2
19	10831	WASHER, LOCK INT. TOOTH #10	2
20		BARB, PUSH-ON	
	11541	3/8" HOSEx10MMx1.25 MALE THD. (HONDA)	1
	10657	3/8" HOSE X 1/4MPT (SUBARU)	
21	56116	HOSE, PUSH-ON 3/8" I.D.x3"L	1
22	11544	BARB, PUSH-ON 3/8" HOSEx1/4 FPT	1
23	10776	PIPE PLUG 1/4 NPT (BRASS)	1
24	15138	METER, HOUR, REDINGTON INDUCTIVE (OPTIONAL)	1

ILLUSTRATION 6 : ENGINE GROUPING (9 HP)



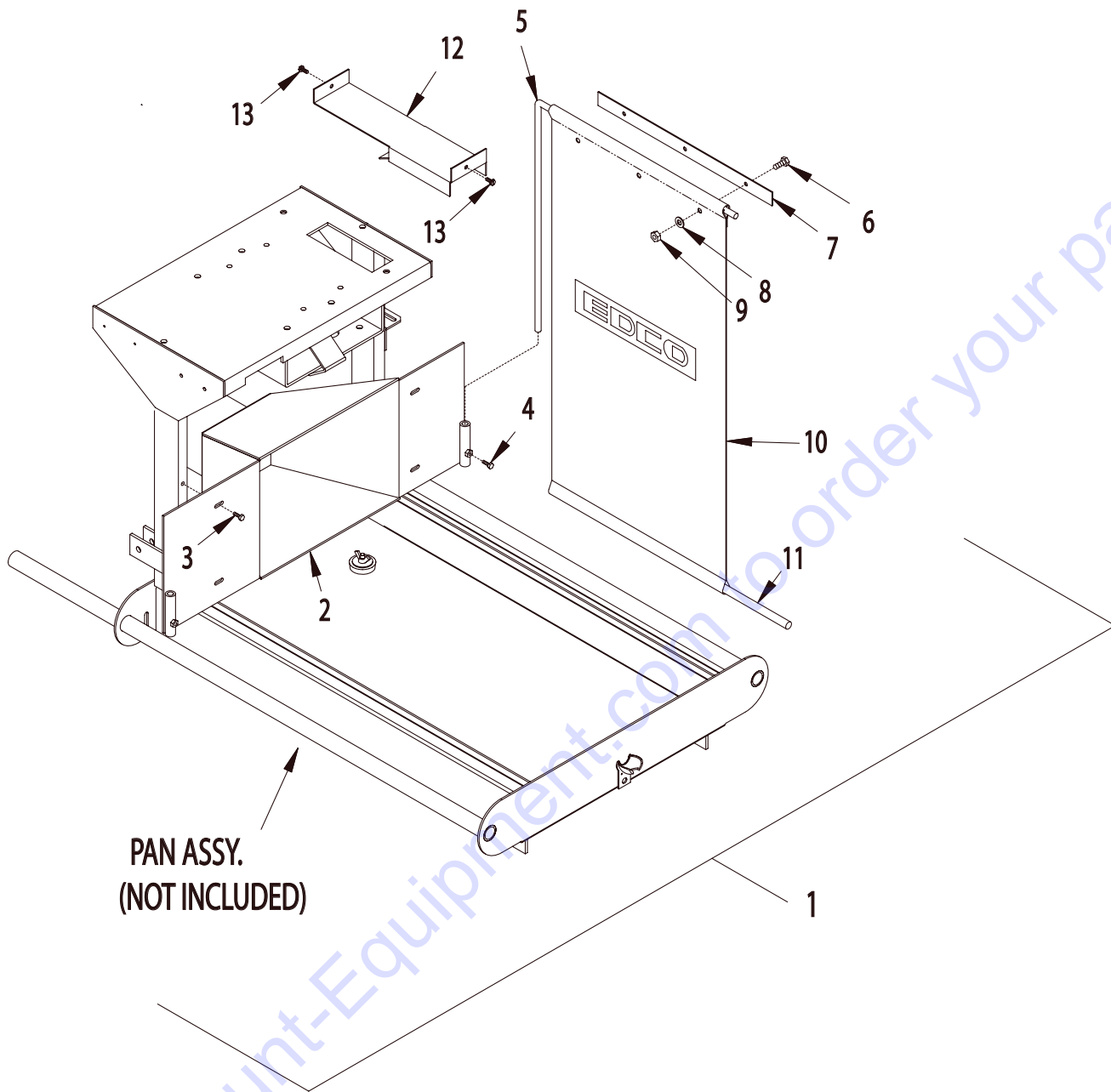
PARTS LISTING - ILLUSTRATION 6 : ENGINE GROUPING (9 HP)			
ITEM#	PART#	DESCRIPTION	QTY.
1		ENGINE W/ CYCLONE AIR CLEANER	1
	15027	HONDA 9HP GX270	
	15063	SUBARU ROBIN 9 HP EX27	
2	40652	SHEAVE 2.24" O.D.x10 GR.Jx1" BORE	1
3	10168	KEY 3/16" SQ.x2"L	1
4	40658	TENSIONER BRKT., BELT	1
5	10048	SCREW, CAP 5/16-24x3/4	2
6	10801	WASHER, LOCK 5/16	2
7	10213	WASHER, FLAT 5/16	2
8	10341	SCREW, CAP 5/16-18x2-1/4	1
9	10213	WASHER, FLAT 5/16	2
10	40391	BEARING, RADIAL BALL 5/16X7/8X11/32	3
11	10113	SPACER, STL 9/16ODx3/8IDx7/32 THK	1
12	10011	SPACER, STEEL 5/8ODx3/8IDx3/8 THK	1
13	10807	NUT, LOCK 5/16-18	1
14	10204	SCREW, CAP 5/16-18x1-3/4	4
15	10213	WASHER, FLAT 5/16	8
16	10025	WASHER, FLAT 3/8	4
17	10801	WASHER, LOCK 5/16	4
18	10054	NUT 5/16-18	4
19	40388	CABLE, THROTTLE, LEVER-TYPE 24"	1
20	10877	SCREW, CAP STSHW 10-24 X 1/2	2
21	10831	WASHER, LOCK INT. TOOTH #10	2
22		BARB, PUSH-ON	1
	11542	3/8" HOSEx12MMx1.50 MALE THD. (HONDA)	
	10657	3/8" HOSE X 1/4MPT (SUBARU)	
23	56116	HOSE, PUSH-ON 3/8" I.D.x3"L	1
24	11544	BARB, PUSH-ON 3/8" HOSEx 1/4 FPT	1
25	10776	PIPE PLUG 1/4 NPT (BRASS)	1
26	15138	METER, HOUR, REDINGTON INDUCTIVE (OPTIONAL)	1

**ILLUSTRATION 7 : BELT & DRIVE SHAFT GROUPING**



ITEM#	PART#	DESCRIPTION	QTY.	ITEM#	PART#	DESCRIPTION	QTY.
1	40606	DECK, ARBOR	1	18	10016	KEY 3/16" SQ.x1-1/2"L	2
2	40629	BEARING, BALL 3/4" BORE	4	19		BELT	1
3	10960	FITTING, GREASE 1/4-28x45D	3	40671		260J-10 V RIBBED, 5.5 THRU 7HP	
4	10961	FITTING, GREASE 1/4-28x90D	1	40666		285J-10 V RIBBED, 9 HP	
5	10816	SCREW, CAP 3/8-24x1-1/2	8	20	40646	BELT 380J-10 V RIBBED	1
6	10025	WASHER, FLAT 3/8	12	21	40649	SHEAVE 2.65"O.D.x10 GR.Jx3/4" BORE	1
7	10811	WASHER, LOCK 3/8	8	22	40611	COVER, SIDE BELT	1
8	10014	NUT 3/8-24	8	23	10018	SCREW, CAP 1/4-20 X 3/4	1
9	10342	SCREW, CAP 5/16-18x1-1/2	1	24	10602	WASHER, FLAT 1/4 SAE	2
10	10213	WASHER, FLAT 5/16	3	25	10861	NUT, KEPS 1/4-20	1
11	40391	BEARING, RADIAL BALL 5/16X7/8X11/32	3	26	40612	COVER END CAP, SIDE BELT	1
12	40661	TENSIONER BAR, ARBOR BELT	1	27	10834	SCREW, CAP 1/4-20 X 1/2	4
13	10213	WASHER, FLAT 5/16	2	28	10038	WASHER, LOCK 1/4	4
14	10801	WASHER, LOCK 5/16	2	29	10602	WASHER, FLAT 1/4 SAE	4
15	10053	SCREW, CAP 5/16-18x3/4	2	30	40613	MOUNTING BRKT., BELT COVER	1
16	40618	SHAFT, JACK 3/4x13-1/2"L	1	31	10053	SCREW, CAP 5/16-18 X 3/4	2
17	40651	SHEAVE 3.0"ODx10GR.Jx3/4" BORE	1	32	10807	NUT, LOCK 5/16-18	2

**ILLUSTRATION 8 : OPTIONAL VACCUM HOOD SYSTEM**

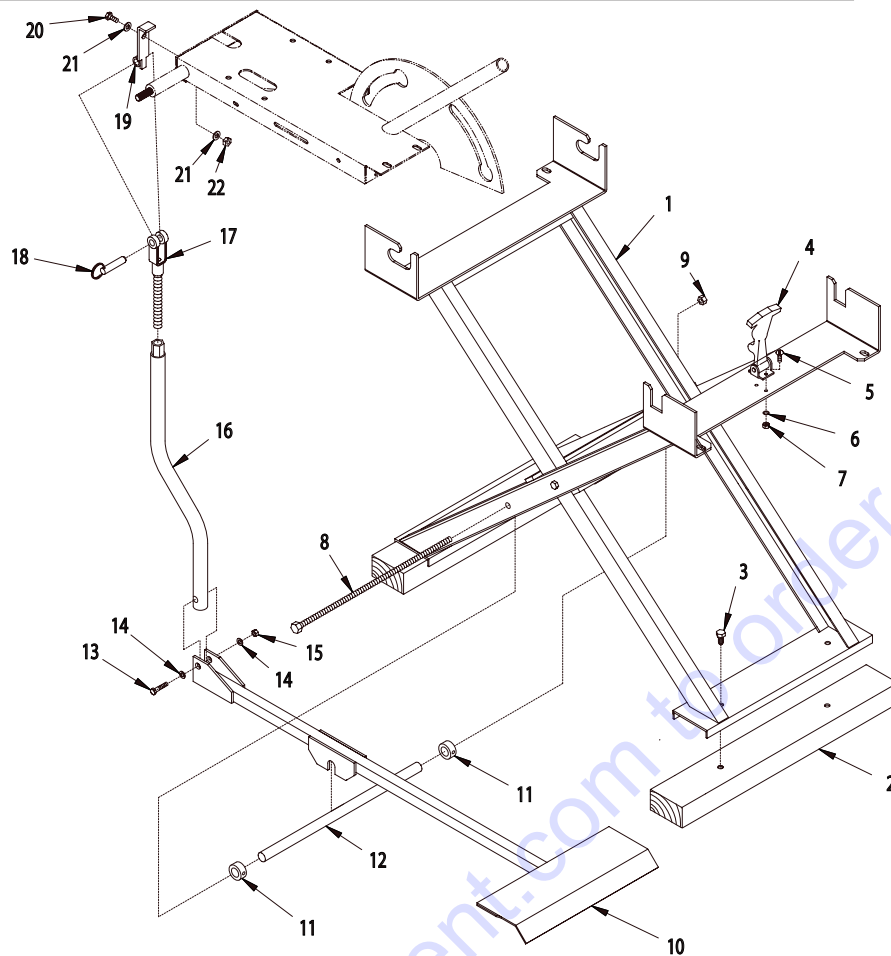


PAN ASSY.  
(NOT INCLUDED)

ITEM #	PART#	DESCRIPTION	QTY.
1	40660	VACUUM HOOD SYSTEM (INCLUDES ITEMS 2-13)	1
2	40623	HOOD, VACUUM SYSTEM	1
3	10846	SCREW, CAP STSHW 1/4-20 X 1/2	4
4	10018	SCREW, CAP 1/4-20 X 3/4	2
5	41152	ROD, CURTAIN, VACUUM HOOD SYSTEM	2
6	10018	SCREW, CAP 1/4-20 X 3/4	6
7	41153	BRACKET, CURTAIN	2
8	10602	WASHER, FLAT 1/4 SAE	6
9	10150	NUT, HEX NYLON LOCK 1/4-20	6
10	40375	CURTAIN 15" X 28" W/ LOGO	2
11	40377	CURTAIN ROD 1/2"DIA. X 13"L	2
12	40663	DEFLECTOR, DUST	1
13	10846	SCREW, CAP STSHW 1/4-20 X 1/2	2





**ILLUSTRATION 9 : OPTIONAL STAND & FOOT PEDAL ASSEMBLY**

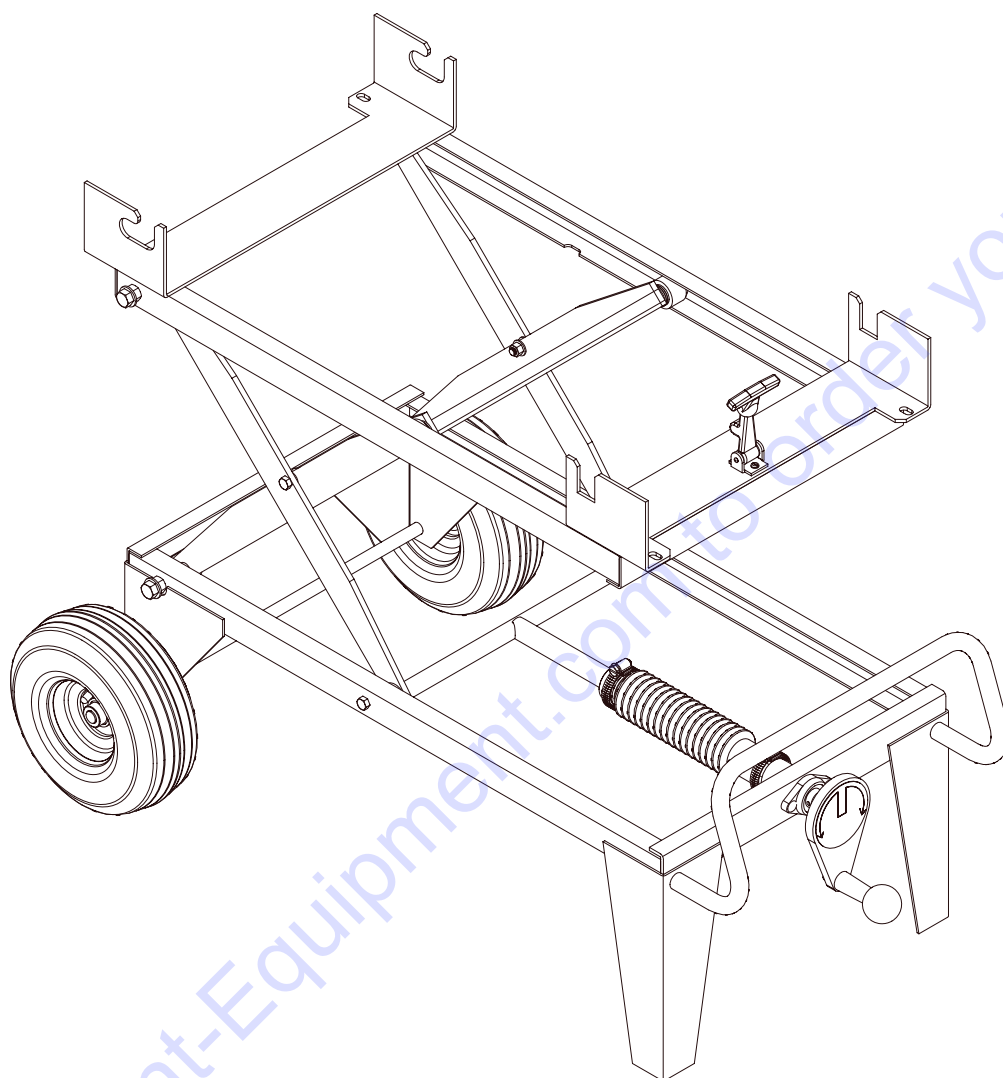
FOLDING STAND - PART #40631 (INCLUDES ITEMS 1-7)

FOOT PEDAL KIT - PART #40632 (INCLUDES ITEMS 8-22)

ITEM #	PART #	DESCRIPTION	QTY.
1	40631W	STAND ONLY	1
2	21801	SKID BOARD 2x4x24"L	2
3	10367	BOLT, LAG 3/8x1	4
4	52002	LATCH, FLEXIBLE DRAW w/ T-HANDLE	1
5	10830	SCREW, MACHINE 10-32x1/2	2
6	10831	WASHER, LOCK, INT. TOOTH #10	2
7	10832	NUT 10-32	2
8	40383	BOLT, ALLTHREAD ROD 1/2-13x17-1/2	1
9	10407	NUT, LOCK 1/2-13	1
10	40633	FOOT PEDAL	1
11	10428	COLLAR, LOCKING 3/4" I.D.	2
12	40634	FOOT PEDAL PIVOT TUBE	1
13	10029	SCREW, CAP 3/8-24x1-3/4	1
14	10025	WASHER, FLAT 3/8	2
15	10004	NUT, LOCK 3/8-24	1
16	40635	FOOT PEDAL LINKAGE	1
17	41019	LINKAGE, CLEVIS	1
18	10125	PIN, DETENT RING 1/2x1-1/2	1
19	40688	MOUNT, FOOT PEDAL LINKAGE	1
20	10806	SCREW, CAP 5/16-18 X 1	1
21	10213	WASHER, FLAT 5/16 SAE	2
22	10807	NUT, LOCK 5/16-18	1

**ILLUSTRATION 10 : OPTIONAL PROCART**

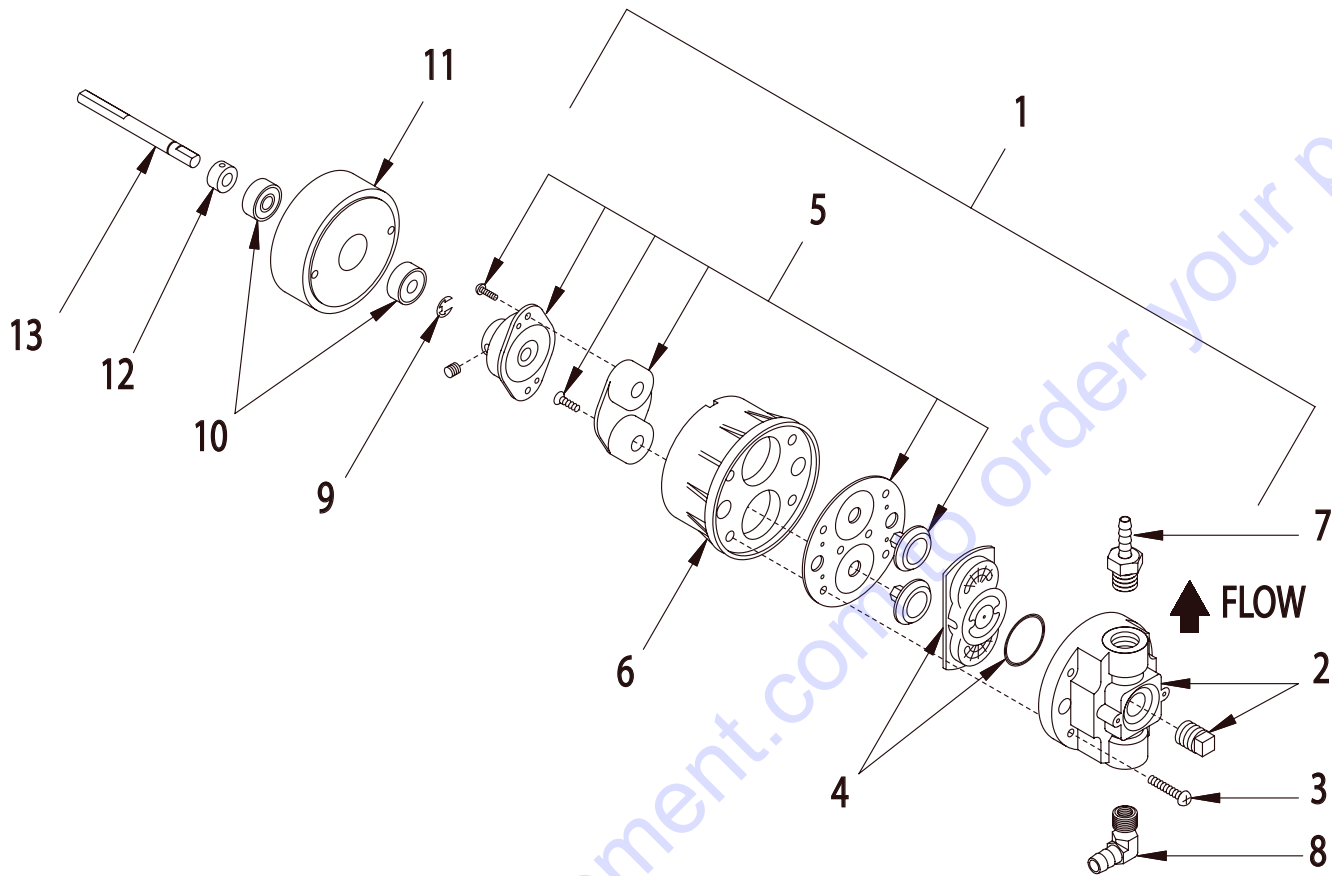
**PART# 24950**



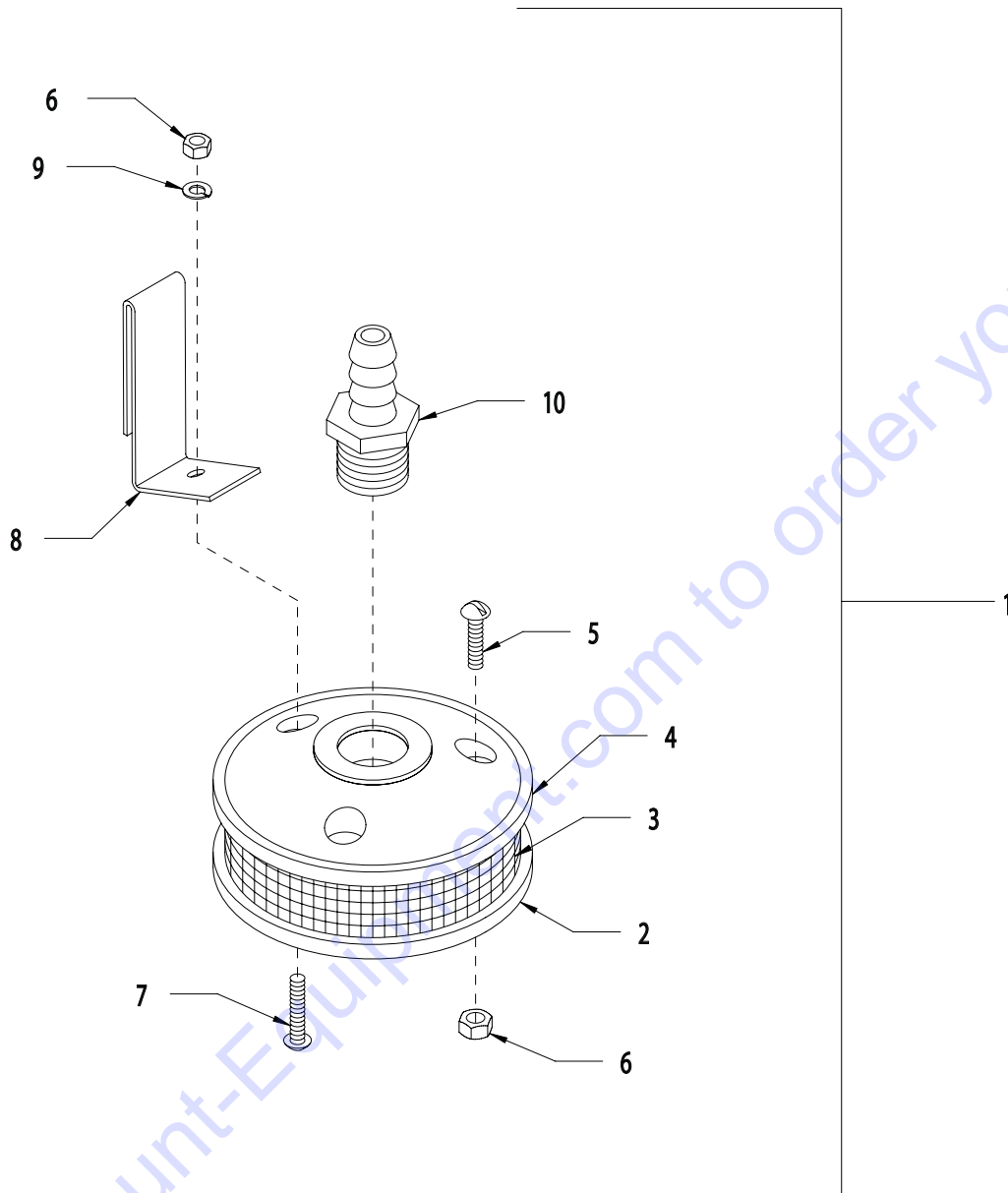
Go to Discount-Equipment.com to order your parts

**ILLUSTRATION 11 : WATER PUMP ASSEMBLY**

**PART# 40685**



ITEM #	PART #	DESCRIPTION	QTY.
1	56101-S1	PUMP HEAD REPLACEMENT, DUPLEX 21050-653A (INCLUDES ITEMS 2 THRU 6)	1
2	56101-S2	HOUSING BODY 20500-507	1
3	56101-S3	SCREWS 20131-001 (SET OF 6)	1-SET
4	56101-S4	CHECK VALVE KIT 20028-008	1
5	56101-S5	DIAPHRAGM KIT W/ BEARING 21004-401	1
6	56101-S6	HOUSING BEARING COVER 20428-100	1
7	40337	BARB, 1/4 HOSE x 3/8 MPT (BRASS)	1
8	36924	BARB ELBOW 90, 5/16HOSE X 3/8MPT (BRASS)	1
9	10137	RETAINING RING, E-CLIP 5/16	1
10	40391	BEARING, RADIAL BALL 5/16 x 7/8 x 11/32	2
11	40393-S1	HUB	1
12	10415	COLLAR, LOCKING 5/16" I.D.	1
13	40393-S2	SHAFT 5/16 x 3-3/4	1

**ILLUSTRATION 12 : WATER FILTER ASSEMBLY**


ITEM #	PART#	DESCRIPTION	QTY.
1	40301	FILTER ASSEMBLY, WATER (ITEMS 2-10)	1
2	40302A	FILTER HOUSING BOTTOM	1
3	40303	SCREEN, WATER FILTER	1
4	40302B	FILTER HOUSING TOP	1
5	40315	SCREW, MACHINE 10-24x1-1/2 (S.S.)	2
6	40308	NUT 10-24 (S.S.)	3
7	40306	SCREW, MACHINE 10-24x1-3/4 (S.S.)	1
8	40305	HANGER CLIP, WATER FILTER	1
9	40307	WASHER, LOCK #10 (S.S.)	1
10	40304	BARB, 3/8 HOSE x 1/2 MPT (PLASTIC)	1

# PARTS FINDER

**Search Website  
by Part Number**



**Search Manual  
Library For Parts  
Manual & Lookup Part  
Numbers – Purchase  
or Request Quote**

**Search Manuals**

Enter your information to help us find the right parts manual for your machine.

\* Brand:

\* Model:

\* Serial:

\* Part Number:

SEARCH

**Can't Find Part or  
Manual? Request Help  
by Manufacturer,  
Model & Description**

**Parts Order Form**

Please fill in the following information to help us find the right part for your machine.

Manufacturer:	<input type="text"/>
Model:	<input type="text"/>
Description:	<input type="text"/>
Part Number:	<input type="text"/>
Quantity:	<input type="text"/>
Notes:	<input type="text"/>

Submit

Discount-Equipment.com is your online resource for quality parts & equipment.

Florida: **561-964-4949** Outside Florida TOLL FREE: **877-690-3101**

**Need parts?**

Click on this link: <http://www.discount-equipment.com/category/5443-parts/> and choose one of the options to help get the right parts and equipment you are looking for. Please have the machine model and serial number available in order to help us get you the correct parts. If you don't find the part on the website or on one of the online manuals, please fill out the request form and one of our experienced staff members will get back to you with a quote for the right part that your machine needs.

We sell worldwide for the brands: Genie, Terex, JLG, MultiQuip, Mikasa, Essick, Whiteman, Mayco, Toro Stone, Diamond Products, Generac Magnum, Airman, Haulotte, Barreto, Power Blanket, Nifty Lift, Atlas Copco, Chicago Pneumatic, Allmand, Miller Curber, Skyjack, Lull, Skytrak, Tsurumi, Husquvarna Target, Stow, Wacker, Sakai, Mi-T-M, Sullair, Basic, Dynapac, MBW, Weber, Bartell, Bennar Newman, Haulotte, Ditch Runner, Menegotti, Morrison, Contec, Buddy, Crown, Edco, Wyco, Bomag, Laymor, EZ Trench, Bil-Jax, F.S. Curtis, Gehl Pavers, Heli, Honda, ICS/PowerGrit, IHI, Partner, Imer, Clipper, MMD, Koshin, Rice, CH&E, General Equipment, Amida, Coleman, NAC, Gradall, Square Shooter, Kent, Stanley, Tamco, Toku, Hatz, Kohler, Robin, Wisconsin, Northrock, Oztec, Toker TK, Rol-Air, APT, Wylie, Ingersoll Rand / Doosan, Innovatech, Con X, Ammann, Mecalac, Makinex, Smith Surface Prep, Small Line, Wanco, Yanmar