

STARTING SERIAL #071010208



PARTS LIST MANUAL

18" DOWNCUT CONCRETE/ASPHALT WALK BEHIND SAW



**MODEL
DS18-13H
SHOWN**



**MODEL
DS18-5B
SHOWN**

DS18 WALK BEHIND SAWS

SKU NO.	MODEL	POWER OPTION
37100	DS18-13H	HONDA ENGINE 13 HP GX390-QXC9
37300	DS18-5B/230/1	BALDOR MOTOR 5 HP-1PH-60HZ-230V-19.5FLA
37400-230	DS18-5B/230/3	BALDOR MOTOR 5 HP-3PH-60HZ-230V-12FLA
37400-460	DS18-5B/460/3	BALDOR MOTOR 5 HP-3PH-60HZ-460V-6FLA
37400-50/220	DS18-5B/50/220/3	BALDOR MOTOR 5 HP-3PH-50HZ-220V-13FLA
37400-50/380	DS18-5B/50/380/3	BALDOR MOTOR 5 HP-3PH-50HZ-380V-7.6FLA
37400-50/440	DS18-5B/50/440/3	BALDOR MOTOR 5 HP-3PH-50HZ-440V-6.5FLA



A Division of Equipment Development Company, Inc.

PARTS FINDER

**Search Website
by Part Number**



**Search Manual
Library For Parts
Manual & Lookup Part
Numbers – Purchase
or Request Quote**

Search Manuals

Enter your information to help us find the right parts manual for your machine.

* Brand:

* Model:

* Serial:

* Part Number:

SEARCH

**Can't Find Part or
Manual? Request Help
by Manufacturer,
Model & Description**

Parts Order Form

Please fill in the following information to help us find the right part for your machine.

Manufacturer:	<input type="text"/>
Model:	<input type="text"/>
Description:	<input type="text"/>
Part Number:	<input type="text"/>
Quantity:	<input type="text"/>
Notes:	<input type="text"/>

Submit

Discount-Equipment.com is your online resource for quality parts & equipment.

Florida: **561-964-4949** Outside Florida TOLL FREE: **877-690-3101**

Need parts?

Click on this link: <http://www.discount-equipment.com/category/5443-parts/> and choose one of the options to help get the right parts and equipment you are looking for. Please have the machine model and serial number available in order to help us get you the correct parts. If you don't find the part on the website or on one of the online manuals, please fill out the request form and one of our experienced staff members will get back to you with a quote for the right part that your machine needs.

We sell worldwide for the brands: Genie, Terex, JLG, MultiQuip, Mikasa, Essick, Whiteman, Mayco, Toro Stone, Diamond Products, Generac Magnum, Airman, Haulotte, Barreto, Power Blanket, Nifty Lift, Atlas Copco, Chicago Pneumatic, Allmand, Miller Curber, Skyjack, Lull, Skytrak, Tsurumi, Husquvarna Target, Stow, Wacker, Sakai, Mi-T-M, Sullair, Basic, Dynapac, MBW, Weber, Bartell, Bennar Newman, Haulotte, Ditch Runner, Menegotti, Morrison, Contec, Buddy, Crown, Edco, Wyco, Bomag, Laymor, EZ Trench, Bil-Jax, F.S. Curtis, Gehl Pavers, Heli, Honda, ICS/PowerGrit, IHI, Partner, Imer, Clipper, MMD, Koshin, Rice, CH&E, General Equipment, Amida, Coleman, NAC, Gradall, Square Shooter, Kent, Stanley, Tamco, Toku, Hatz, Kohler, Robin, Wisconsin, Northrock, Oztec, Toker TK, Rol-Air, APT, Wylie, Ingersoll Rand / Doosan, Innovatech, Con X, Ammann, Mecalac, Makinex, Smith Surface Prep, Small Line, Wanco, Yanmar

READ AND UNDERSTAND THE OPERATORS INSTRUCTION MANUAL THOROUGHLY BEFORE ATTEMPTING TO OPERATE THIS EQUIPMENT. Death or serious injury could occur if this machine is used improperly.



SAFETY MESSAGES



The safety instructions are preceded by a graphic alert message of DANGER, WARNING, or CAUTION.



Indicates an imminent hazard which, if not avoided, will result in death or serious injury.



Indicates an imminent hazard which, if not avoided, can result in death or serious injury.



Indicates hazards which, if not avoided, could result in serious injury and or damage to the equipment.

GASOLINE Powered Equipment



- Do not operate gasoline powered equipment without adequate ventilation. Carbon monoxide is an invisible, odorless gas that can kill.

ELECTRICAL Powered Equipment



- ELECTRICAL HAZARD** - Be sure equipment is properly grounded. Failure to comply could kill or result in serious injury.



The engine exhaust from this product contains chemicals known to the State of California to cause cancer, birth defects or other reproductive harm.

GENERAL INSTRUCTIONS



- You must read and understand the operators instruction manual and all other manuals associated with this machine. For your safety and the safety of others around you, it is extremely important to fully understand how to operate this machine in the way it was intended. Different model machines or older/newer versions of the same model may have different parts and controls that you need to understand. If instructions are not readable or available DO NOT USE this machine and contact Discount-equipment for a replacement Manual.
- You must be able to physically handle the bulk weight and power of this machine. If not properly controlled this machine can cause death or serious injury.
- Do not operate this machine in an impaired mental state. You must be able to exercise good judgement and reactions to maintain a safe working environment.
- This is a "one person" machine which means only one operator can be operating the machine at any one time. For the safety of others, maintain a safe operating distance to other personnel. Your work area should be defined and appropriately marked so bystanders and coworkers do not stand or walk near this machine and end up seriously injured by flying debris or exposing them to harmful noise or dust.
- This equipment is for Commercial use. Although this is a "one person" machine your work team should understand how to shut this machine off and quickly get medical help if an accident strikes the operator.
- Keep all guards in place during operation. The guards are to provide protection from inadvertent contact with dangerous moving parts, pinch points, or hot surfaces.
- Wear appropriate Personal Protective Equipment (PPE) including safety glasses, safety boots, work gloves, respiratory protection, hearing protection, and head protection. Do not wear loose clothing that can get tangled in moving parts. Failure to do so could result

in dismemberment or death. **Wear an approved respirator when removing hazardous materials or when grinding/cutting dry materials. Some dust particles such as concrete dust can contain silicate particles which can cause silicosis (a very serious lung disease). Contact NIOSH or OSHA for further details. When wet grinding/cutting, avoid contact with the concrete/asphalt slurry which can cause serious skin irritations.**

- You must maintain this machine per the maintenance schedule in the operator manual. Remember before adjusting, servicing, or fueling this machine, disconnect the source of power to the machine by disconnecting the spark plug (Gas models), or by unplugging the electrical power cord (electric models) or air hose (Pneumatic models) AT THE MACHINE so you can assure yourself it remains unplugged while you are working on it. Do not modify this machine. Use only genuine EDCO parts and accessories. Repairs and service should be performed by approved EDCO dealers or authorized technicians.
- You should look carefully around the area before you begin work so you can identify potential hazards such as deck inserts, pipes, columns, openings, electrical cords or outlets, or any other objects protruding from the slab surface.
- This machine has no brain so you must use your own. There is no substitute for safety. The safety decals on the machine are to serve as a reminder for information you must already know before you begin using this machine. Take a moment to reread the safety decals each time you use the machine. If your machine is missing any decals, contact Discount-equipment.

PARTS LIST MANUAL

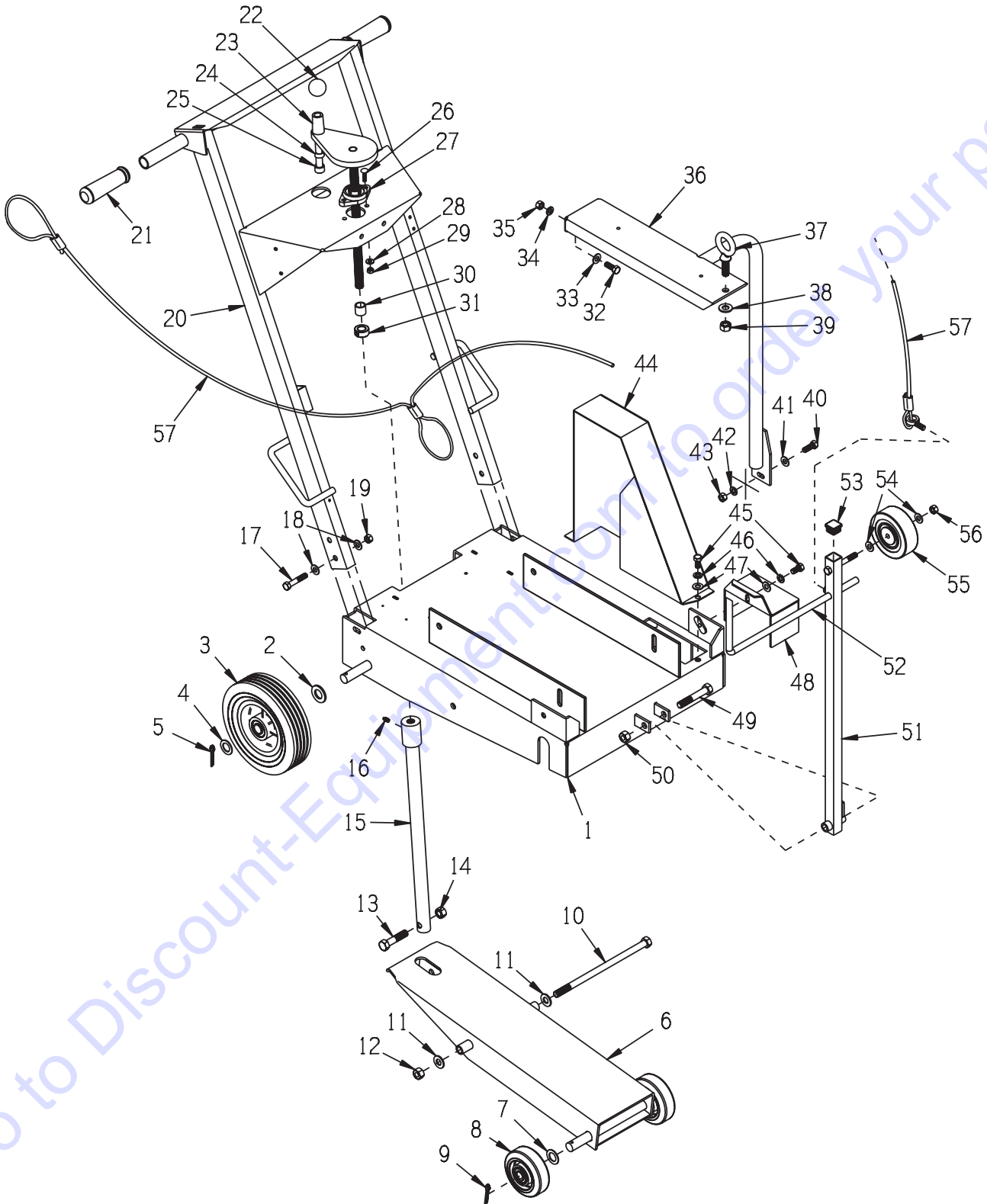
MODEL DS18

<u>Section</u>	<u>Page Number</u>
Safety Messages and General Instructions	2
How To Order Replacement Parts	3
Illustration 1: Main Grouping	4,5
Illustration 2: Arbor & Blade Guard Grouping	6,7
Illustration 3: Engine Grouping	8,9
Illustration 4: Motor Grouping	10,11
Illustration 5: Optional Water Tank Assembly	12,13
Wiring Diagram for Electric Units - Baldor L3608T 5HP 1Phase-60Hz	14
Wiring Diagram for Electric Units - Baldor M3613T 5HP 3Phase-60Hz	15
Wiring Diagram for Electric Units - Baldor M3613T-50 5HP 3Phase-50Hz	16
Wiring Diagram for Starter Box & Remote Switch	17
Wiring Diagram for Honda Engine	18
Blank Page	19
Limited Equipment Warranty	Back Page



A Division of Equipment Development Company, Inc.

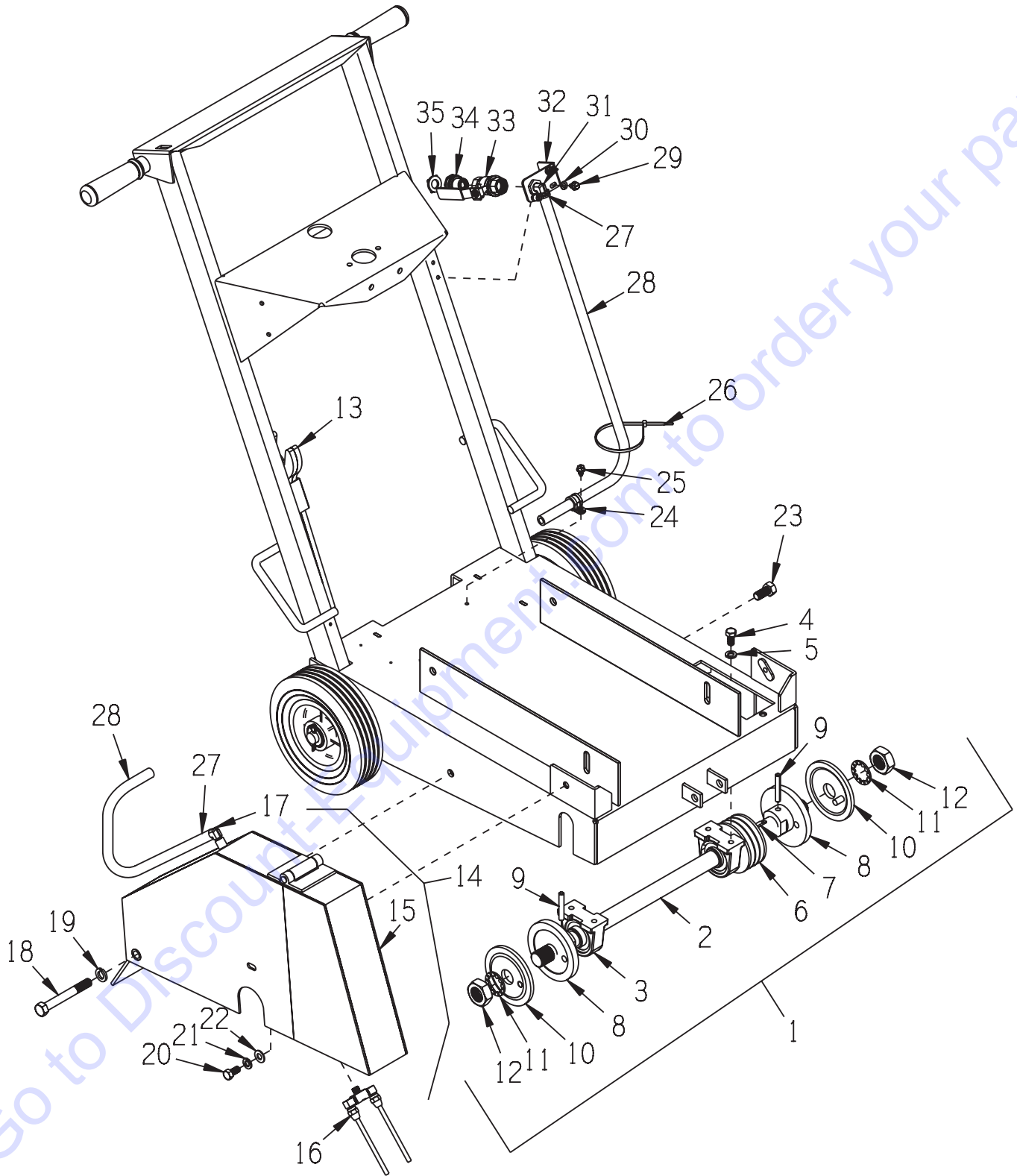
ILLUSTRATION 1 : MAIN GROUPING



PARTS LISTING - ILLUSTRATION 1: MAIN GROUPING

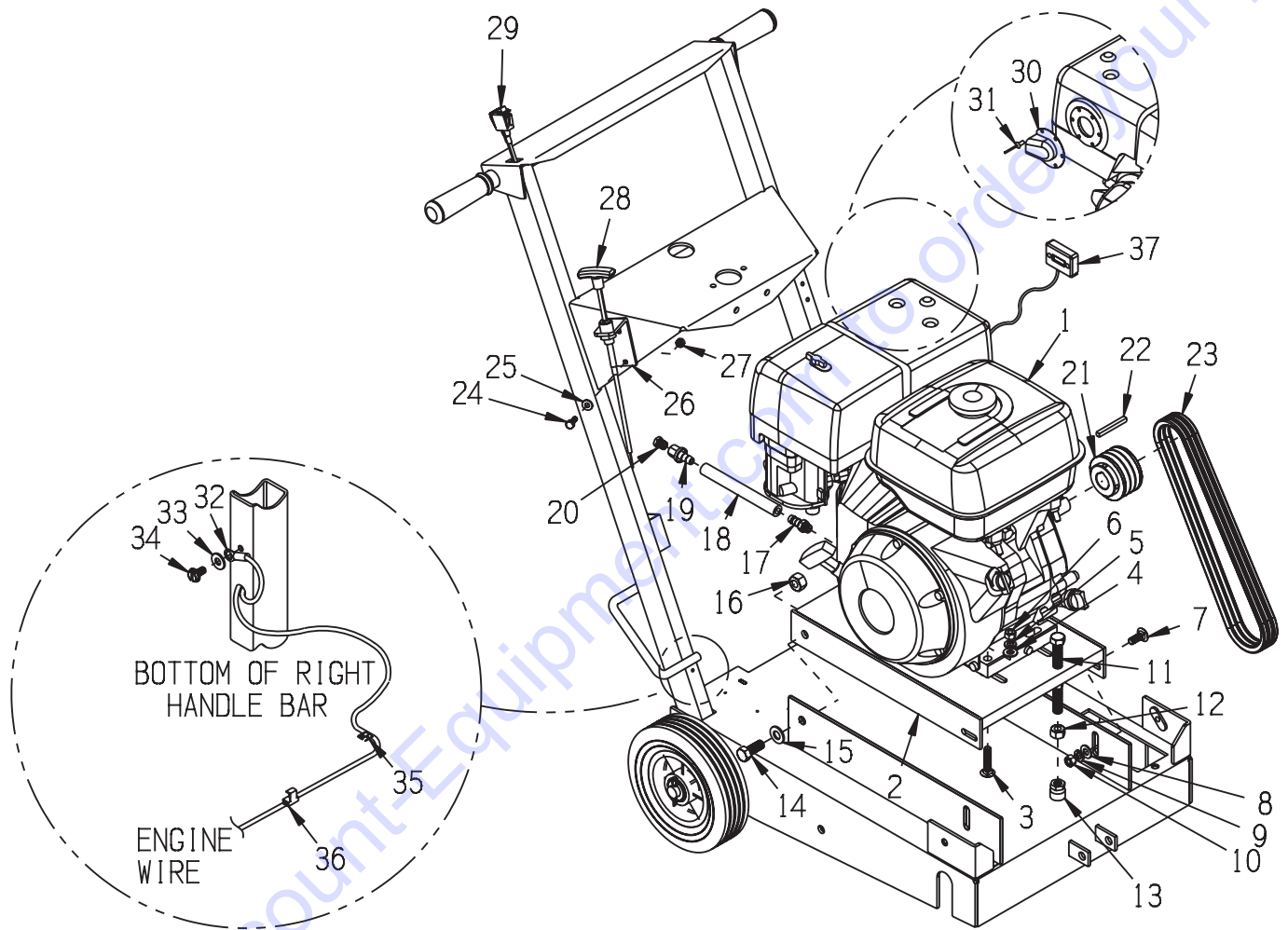
ITEM #	PART #	DESCRIPTION	QTY.	ITEM #	PART #	DESCRIPTION	QTY.
1	56301	MAIN FRAME	1	29	10150	NUT, HEX NYLON LOCK 1/4-20	2
2	10009	WASHER, FLAT 3/4 SAE	4	30	55010	SPACER, HANDWHEEL 5/8"ID X 3/4"L	1
3	79013	WHEEL 8 X 2-1/2 X 3/4"BRG.	2	31	10096	COLLAR, LOCKING 5/8"ID	1
4	11597	WASHER .755"ID X 1.25"OD X .060"THK	2	32	10055	SCREW, CAP 3/8-16 X 1	2
5	10306	PIN, COTTER 3/16 X 1-1/4	2	33	10025	WASHER, FLAT 3/8 SAE	2
6	56302	FORK	1	34	10811	WASHER, LOCK 3/8	2
7	11597	WASHER .755"ID X 1.25"OD X .060"THK	AS	35	10156	NUT, HEX NYLON LOCK 3/8-16	2
	10009	WASHER, FLAT 3/4 SAE	REQ'D.	36	56305	LIFTING BAIL	1
8	52001	WHEEL 4 X 1-1/2 X 3/4"BRG.	2	37	10837	BOLT, EYE 1/2-13 X 1-1/2 X 1-1/8"ID	1
9	10306	PIN, COTTER 3/16 X 1-1/4	2	38	10312	WASHER, FLAT 1/2 SAE	1
10	65239	SCREW, CAP 1/2-13 X 10	1	39	10155	NUT, HEX NYLON LOCK 1/2-13	1
11	10312	WASHER, FLAT 1/2 SAE	2	40	10055	SCREW, CAP 3/8-16 X 1	1
12	10155	NUT, HEX NYLON LOCK 1/2-13	1	41	10025	WASHER, FLAT 3/8 SAE	1
13	10347	SCREW, CAP 1/2-20 X 2-1/4	1	42	10811	WASHER, LOCK 3/8	1
14	10154	NUT, HEX NYLON LOCK 1/2-20	1	43	10156	NUT, HEX NYLON LOCK 3/8-16	1
15	56204	LINKAGE, CUT CONTROL	1	44	56206	COVER, BELT	1
16	10808	FITTING, GREASE 1/4-28 STRAIGHT	1	45	10907	SCREW, CAP 3/8-16 X 3/4	3
17	10317	SCREW, CAP 3/8-16 X 2	4	46	10811	WASHER, LOCK 3/8	3
18	10025	WASHER, FLAT 3/8 SAE	8	47	10025	WASHER, FLAT 3/8 SAE	3
19	10156	NUT, HEX NYLON LOCK 3/8-16	4	48	56307	ARBOR COVER	1
20	56303	HANDLE BAR	1	49	10499	SCREW, CAP 1/2-13 X 3	1
21	10608	GRIP, HAND 1" MODEL AT	2	50	10155	NUT, HEX NYLON LOCK 1/2-13	1
22	14023	KNOB, BALL 1-3/8 W/ 1/2-13THD, BLK.	1	51	56304	GUIDE BAR	1
23	51075	HANDWHEEL, LARGE W/ 5/8-8 X 13"ROD	1	52	51012	GUIDE POINTER, FRONT	1
24	50550	SLEEVE FOR 1/2" CAPSCREW, TAPERED	1	53	51078	PLUG, SQ. TUBE 1 X 14 GA., BLACK	1
25	10346	SCREW, SKT. HD. 1/2-13 X 4-1/2 ZINC	1	54	10025	WASHER, FLAT 3/8 SAE	2
26	10412	BOLT, CARRIAGE 1/4-20 X 1 FULL THD.	2	55	50024	WHEEL 4 X 1-3/8 X 3/8"BORE	1
27	80009	BEARING, BALL 5/8" 2-HOLE (NO G.F.)	1	56	10156	NUT, HEX NYLON LOCK 3/8-16	1
28	10602	WASHER, FLAT 1/4 SAE	2	57	56221	ROPE, GUIDE BAR	1

ILLUSTRATION 2: ARBOR & BLADE GUARD GROUPING



PARTS LISTING - ILLUSTRATION 2: ARBOR & BLADE GUARD GROUPING			
ITEM #	PART #	DESCRIPTION	QTY.
1	56320A	ARBOR ASSEMBLY COMPLETE (ITEMS 2-12)	1
2	56208	ARBOR SHAFT 23-3/8"L	1
3	50222	BEARING, BALL 1" TPB	2
4	10907	SCREW, CAP 3/8-16 X 3/4	4
5	10811	WASHER, LOCK 3/8	4
6	56235	SHEAVE 3.35"OD X 3GR.3V X 1"BORE	1
7	10071	KEY 1/4SQ X 2-1/2	1
8	56308	ARBOR BACKING PLATE 4-1/2"	2
9	10211	PIN, ROLL 5/16 X 2	2
10	56309	ARBOR BLADE CAP 4-1/2"	2
11	55009	WASHER, LOCK, INT. TOOTH 1"	2
12	50019	NUT, JAM 1-14	2
13	50445	WRENCH, ARBOR, 1-1/2" OPEN END	2
14	56306C	GUARD, BLADE 18", ASSY. COMPLETE (ITEMS15-17)	1
15	56306	BLADE GUARD 18"	1
16	51026	NOZZLE, COOLANT 1/8MPT W/ 6" TUBES	1
17	11562	BARB ELBOW 90, 3/8 HOSE X 1/8 MPT	1
18	81001	SCREW, CAP 1/2-13 X 4	1
19	10045	WASHER, LOCK 1/2	1
20	10907	SCREW, CAP 3/8-16 X 3/4	1
21	10811	WASHER, LOCK 3/8	1
22	10025	WASHER, FLAT 3/8 SAE	1
23	10914	SCREW, CAP 1/2-13 X 1	1
24	11565	CLAMP, LOOM, 5/8" (SAE SIZE 10)	1
25	10846	SCREW, CAP STSHW 1/4-20 X 1/2	1
26	10982	TIE, CABLE, BLACK NYLON 11-1/4"	1
27	50069	CLAMP, HOSE, SAE #6, ADJ. TO 13/16	2
28	56317	HOSE, WATER 3/8"ID X 48"L	1
29	10846	SCREW, CAP STSHW 1/4-20 X 1/2	2
30	10038	WASHER, LOCK 1/4	2
31	10799	BARB ELBOW 90, 3/8HOSE X 1/4MPT	1
32	56022	BRACKET, WATER VALVE	1
33	10711	VALVE, BALL 1/2 FPT	1
34	80021	CONN., SWIVEL FEM. 3/4HOSE X 1/2MPT	1
35	10070	WASHER, HOSE 3/4 (INCLUDED W/ ITEM 34)	1

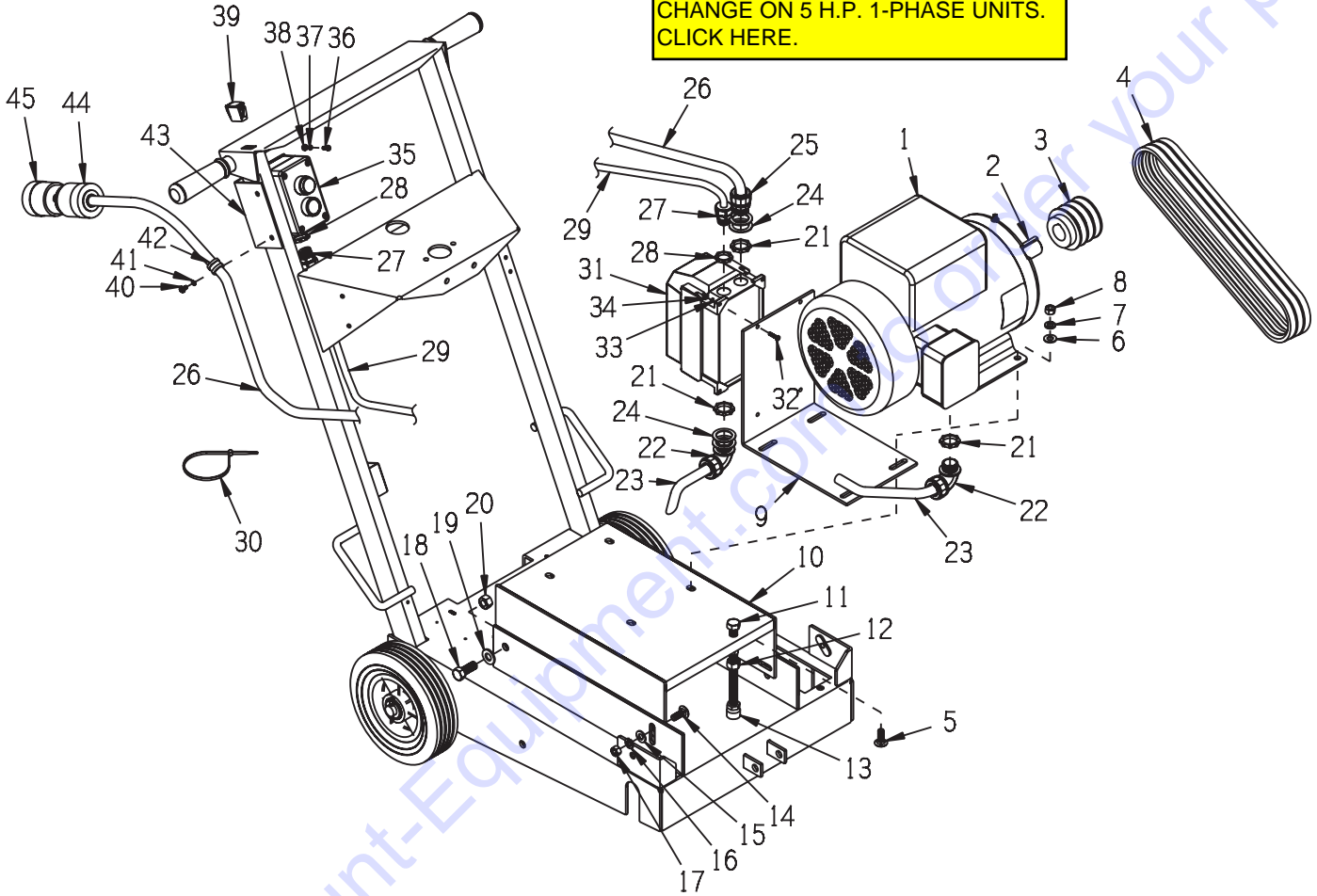
ILLUSTRATION 3: ENGINE GROUPING



PARTS LISTING - ILLUSTRATION 3: ENGINE GROUPING			
ITEM #	PART #	DESCRIPTION	QTY.
1	15029	ENGINE, HONDA 13 HP GX390-QXC9 CYC. A.C.	1
2	56212	MOUNT, ENGINE	1
3	10087	BOLT, CARRIAGE 3/8-16 X 1-3/4 F.T.	4
4	10025	WASHER, FLAT 3/8 SAE	4
5	10811	WASHER, LOCK 3/8	4
6	10404	NUT 3/8-16	4
7	10802	BOLT, CARRIAGE 3/8-16 X 1 FULL THD.	2
8	10025	WASHER, FLAT 3/8 SAE	2
9	10811	WASHER, LOCK 3/8	2
10	10404	NUT 3/8-16	2
11	10392	BOLT, TAP 1/2-13 X 4 (FULL THREAD)	1
12	10417	NUT 1/2-13	1
13	50710	TOGGLE PAD 7/8"D X 15/16"H X 1/2-13	1
14	10321	SCREW, CAP 1/2-20 X 1-1/4	2
15	10312	WASHER, FLAT 1/2 SAE	2
16	10154	NUT, HEX NYLON LOCK 1/2-20	2
17	11542	BARB, PUSH-ON 3/8 HOSE X 12MM X 1.50	1
18	56226	HOSE, PUSH-ON 3/8"ID X 6"L	1
19	11544	BARB, PUSH-ON 3/8 HOSE X 1/4FPT	1
20	10776	PIPE PLUG 1/4 NPT (BRASS)	1
21	65238	SHEAVE 2.8"OD X 3GR.3V X 1"BORE	1
22	10307	KEY 1/4SQ X 2-1/4	1
23	10201	BELT 3VX-335	3
24	10018	SCREW, CAP 1/4-20 X 3/4	2
25	10602	WASHER, FLAT 1/4 SAE	2
26	64075	MOUNT BRKT., THROTTLE CABLE	1
27	10150	NUT, HEX NYLON LOCK 1/4-20	2
28	51081	CABLE, TURN-TO-LOCK CONTROL 72"	1
29	15201A	SWITCH W/ WIRES, ROCKER RED ON-OFF	1
30	10625	MUFFLER CAP, HONDA #18331-2E3-810	1
31	10128	RIVET, BLIND 1/8 X .250L X .262HD	2
32	50084	TERM., RING #10 16-14GA. INSULATED	1
33	10831	WASHER, LOCK, INT. TOOTH #10	1
34	10877	SCREW, CAP STSHW 10-24 X 1/2	1
35	36042	CLIP, NATURAL CORD, 1/8" X 1/4"	1
36	10970	CONN., WIRE QUICK-SPLICE 18-14 GA.	1
37	15138	METER, HOUR, REDINGTON INDUCTIVE (OPTIONAL)	

ILLUSTRATION 4: MOTOR GROUPING

EFFECTIVE OCT. 2008
 STARTING SERIAL # 081010203
 SEE PARTS BULLETIN FOR MOTOR
 CHANGE ON 5 H.P. 1-PHASE UNITS.
 CLICK HERE.



PARTS LISTING - ILLUSTRATION 4: MOTOR GROUPING

ITEM #	PART #	DESCRIPTION	QTY.
1		MOTOR, 5 HP	1
	81026	BALDOR L3608T 1PH-60HZ-230V-3450RPM	
		<i>L3608T REPLACEMENT PARTS:</i>	
	16121	CAPACITOR, START 161-193 MFD 250V	2
	16164	CAPACITOR, RUN 40MFD 370V	1
	81022	BALDOR M3613T 3PH-60HZ-230/460V-3450RPM	
	16020	BALDOR M3613T 3PH-50HZ-220/380/440V-2850RPM	

PARTS FINDER

**Search Website
by Part Number**



**Search Manual
Library For Parts
Manual & Lookup Part
Numbers – Purchase
or Request Quote**

Search Manuals

Enter your information to help us find the right parts manual for your machine.

* Brand:

* Model:

* Serial:

* Part Number:

SEARCH

**Can't Find Part or
Manual? Request Help
by Manufacturer,
Model & Description**

Parts Order Form

Please fill in the following information to help us find the right part for your machine.

Manufacturer:	<input type="text"/>
Model:	<input type="text"/>
Description:	<input type="text"/>
Part Number:	<input type="text"/>
Quantity:	<input type="text"/>
Notes:	<input type="text"/>

Discount-Equipment.com is your online resource for quality parts & equipment.

Florida: **561-964-4949** Outside Florida TOLL FREE: **877-690-3101**

Need parts?

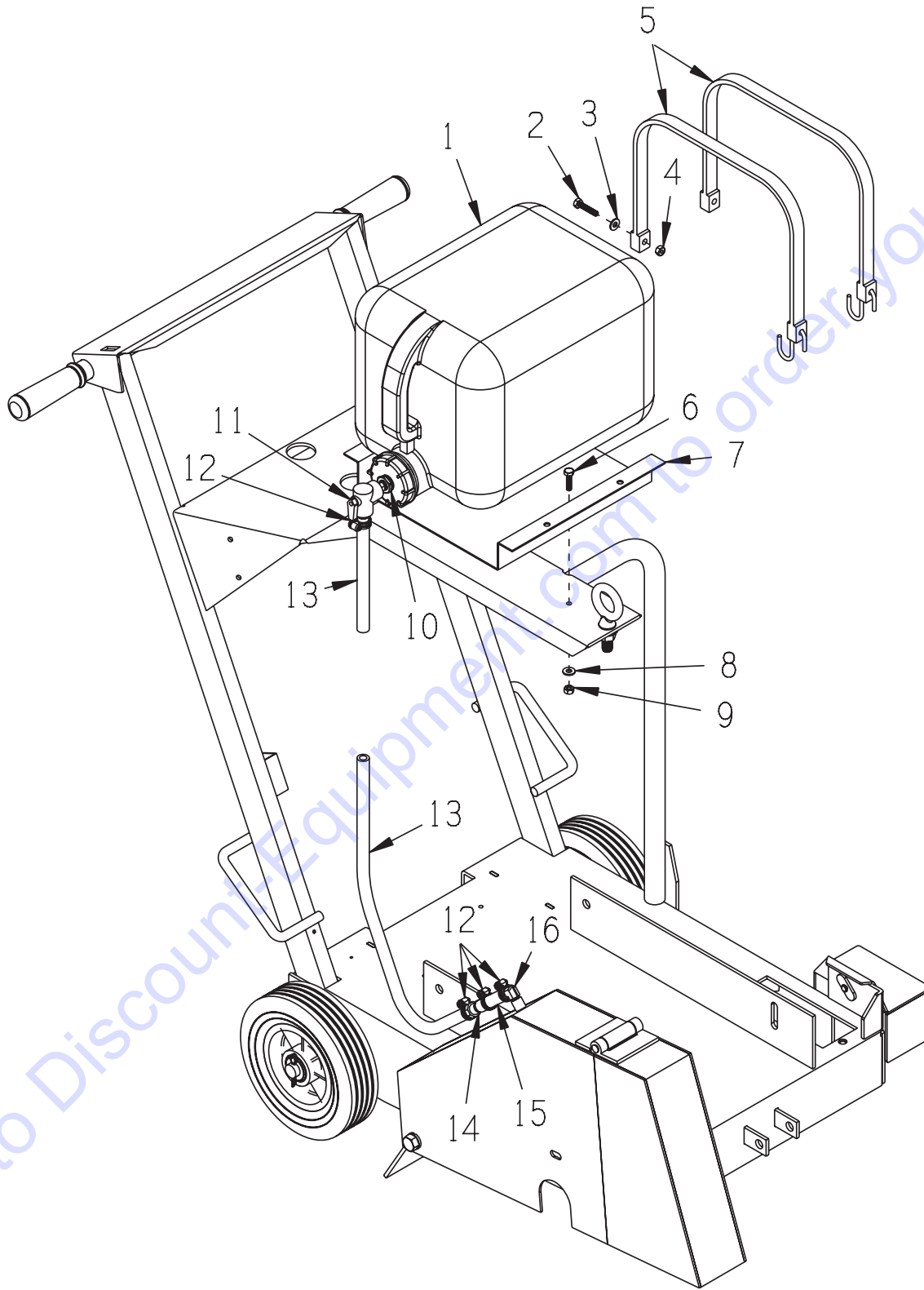
Click on this link: <http://www.discount-equipment.com/category/5443-parts/> and choose one of the options to help get the right parts and equipment you are looking for. Please have the machine model and serial number available in order to help us get you the correct parts. If you don't find the part on the website or on one of the online manuals, please fill out the request form and one of our experienced staff members will get back to you with a quote for the right part that your machine needs.

We sell worldwide for the brands: Genie, Terex, JLG, MultiQuip, Mikasa, Essick, Whiteman, Mayco, Toro Stone, Diamond Products, Generac Magnum, Airman, Haulotte, Barreto, Power Blanket, Nifty Lift, Atlas Copco, Chicago Pneumatic, Allmand, Miller Curber, Skyjack, Lull, Skytrak, Tsurumi, Husquvarna Target, Stow, Wacker, Sakai, Mi-T-M, Sullair, Basic, Dynapac, MBW, Weber, Bartell, Bennar Newman, Haulotte, Ditch Runner, Menegotti, Morrison, Contec, Buddy, Crown, Edco, Wyco, Bomag, Laymor, EZ Trench, Bil-Jax, F.S. Curtis, Gehl Pavers, Heli, Honda, ICS/PowerGrit, IHI, Partner, Imer, Clipper, MMD, Koshin, Rice, CH&E, General Equipment, Amida, Coleman, NAC, Gradall, Square Shooter, Kent, Stanley, Tamco, Toku, Hatz, Kohler, Robin, Wisconsin, Northrock, Oztec, Toker TK, Rol-Air, APT, Wylie, Ingersoll Rand / Doosan, Innovatech, Con X, Ammann, Mecalac, Makinex, Smith Surface Prep, Small Line, Wanco, Yanmar

PARTS LISTING CONT'D - ILLUSTRATION 4: MOTOR GROUPING

ITEM #	PART #	DESCRIPTION	QTY.
2	10071	KEY 1/4SQ X 2-1/2	1
3	56314	SHEAVE 2.8"OD X 3GR.3V X 1-1/8"BORE	1
4	10269	BELT 3VX-400	3
5	10802	BOLT, CARRIAGE 3/8-16 X 1 FULL THD.	4
6	10025	WASHER, FLAT 3/8 SAE	4
7	10811	WASHER, LOCK 3/8	4
8	10404	NUT 3/8-16	4
9	65087	MOUNT, STARTER	1
10	56313	MOUNT, MOTOR	1
11	51067	BOLT, ALLTHREAD ROD 1/2-13 X 7	1
12	10417	NUT 1/2-13	1
13	50710	TOGGLE PAD 7/8"D X 15/16"H X 1/2-13	1
14	10802	BOLT, CARRIAGE 3/8-16 X 1 FULL THD.	2
15	10025	WASHER, FLAT 3/8 SAE	2
16	10811	WASHER, LOCK 3/8	2
17	10404	NUT 3/8-16	2
18	10321	SCREW, CAP 1/2-20 X 1-1/4	2
19	10312	WASHER, FLAT 1/2 SAE	2
20	10154	NUT, HEX NYLON LOCK 1/2-20	2
21	10740	CONDUIT LOCK NUT 3/4 NP	3
22	10984	CONN., LIQUID TITE 90D X 3/4NPT	2
23		WIRE HARNESS, STARTER TO MOTOR	1
	65107	10/3 X 28"LOA (1 PHASE)	
	65108	10/4 X 28"LOA (3 PHASE)	
24	77081	WASHER, FLAT 1-1/2 X 1-1/16 X .06	4
25	10605	STRAIN RELIEF 3/4NPT X .650-.750"	1
26		WIRE HARNESS, STARTER TO POWER SOURCE	1
	65104	10/3 X 48"LOA (1 PHASE)	
	65105	10/4 X 48"LOA (3 PHASE)	
27	40066	STRAIN RELIEF 1/2NPT X .350-.450"	2
28	10790	CONDUIT LOCK NUT 1/2 NP	2
29	65106	WIRE HARNESS 16/4 x 36" LOA, STARTER TO SWITCH	1
30	10982	TIE, CABLE, BLACK NYLON 11-1/4"	1
31		LOVATO STARTER w/ BLUE RESET BUTTON	1
		SPECIFY VOLTAGE FOR 50 Hz	
	16454	1 PHASE-230V-60HZ, 11-M1-BRF-R30-26-23060	
	16457	3 PHASE-230V-60HZ, 11-M1-BRF-R23-15-23060	
	16458	3 PHASE-460V-60HZ, 11-M1-BRF-R14-10-46060	
32	10362	SCREW, MACHINE 8-32 X 3/4	4
33	10461	WASHER, LOCK, INT. TOOTH #8	4
34	10462	NUT, KEPS 8-32	4
35	16456	REMOTE SWITCH BOX COMPLETE	1
	16456-1	ENCLOSURE, LOVATO 2 BUTTON	1
	16456-2	ENCLOSURE BUTTON, GREEN FLUSH START	1
	16456-3	ENCLOSURE BUTTON, RED EXTENDED STOP	1
	16456-4	ENCLOSURE CONTACT, START GREEN N.O.	1
	16456-5	ENCLOSURE CONTACT, STOP RED N.C.	1
36	11663	SCREW, MACHINE 8-32 X 1/2	4
37	10461	WASHER, LOCK, INT. TOOTH #8	4
38	10462	NUT, KEPS 8-32	4
39	15204	PLUG, RECT. HOLE, PLASTIC SNAP-IN	1
40	10846	SCREW, CAP STSHW 1/4-20 X 1/2	2
41	10038	WASHER, LOCK 1/4	2
42	11565	CLAMP, LOOM, 5/8" (SAE SIZE 10)	1
43	65122	BRACKET, REMOTE SWITCH	1
44	40037	PLUG, LOCKING 20A/250V L6-20P (1 PHASE ONLY)	1
45	40000	CONNECTOR, LOCKING 20A/250V L6-20R (1 PHASE ONLY)	1

ILLUSTRATION 5: OPTIONAL WATER TANK ASSEMBLY
PART # 56310



PARTS LISTING - ILLUSTRATION 5: OPTIONAL WATER TANK ASSEMBLY

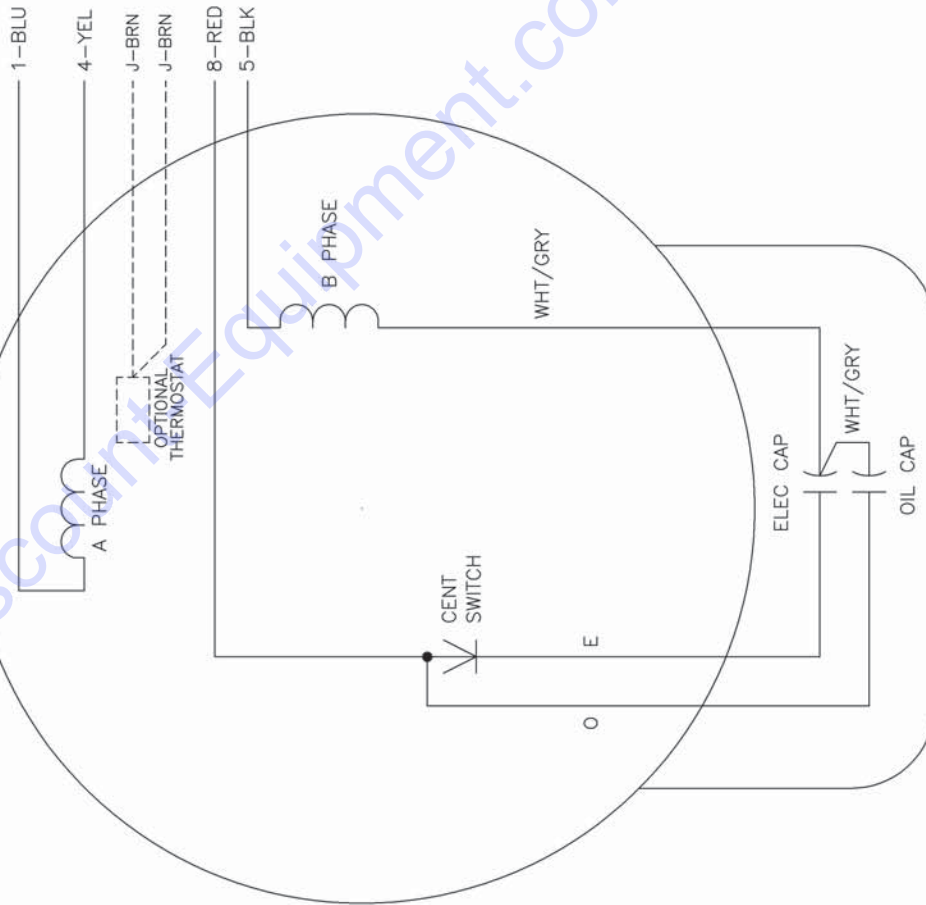
ITEM #	PART #	DESCRIPTION	QTY.
1	52031	DRUM, PLASTIC 5 GALLON, 3/4NPT CAP	1
2	10905	SCREW, CAP 1/4-20 X 1-1/4	2
3	10602	WASHER, FLAT 1/4 SAE	2
4	10150	NUT, HEX NYLON LOCK 1/4-20	2
5	52035	TIE-DOWN STRAP, MOLDED RUBBER 24"	2
6	10031	SCREW, CAP 1/4-20 X 1	2
7	56311	TRAY, WATER TANK	1
8	10602	WASHER, FLAT 1/4 SAE	2
9	10150	NUT, HEX NYLON LOCK 1/4-20	2
10	52034	BUSHING, HEX 3/4 X 1/4 NPT (BRASS)	1
11	56312	VALVE, BALL PVC 90°A 1/4MPT X BARB	1
12	50069	CLAMP, HOSE, SAE #6, ADJ. TO 13/16	4
13	56315	HOSE, WATER 3/8"ID X 24"L	1
14	11637	COUPLING, QUICK-DISCONNECT 3/8" SPL	1
15	56316	HOSE, WATER 3/8"ID X 2"L	1
16	11562	BARB ELBOW 90, 3/8 HOSE X 1/8 MPT	1

WIRING DIAGRAM FOR ELECTRIC UNITS - BALDOR L3608T 5HP 1PHASE-60HZ

CD0017A02

CD0017A02

	LINE A	LINE B
STD	1,8	4,5
OPP	1,5	4,8



NOTES:

1. STANDARD ROTATION IS CCW FACING END OPPOSITE SHAFT EXTENSION.
2. OPTIONAL THERMOSTAT IS PROVIDED WHEN SPECIFIED.
3. MULTIPLE CAPACITORS ARE CONNECTED IN PARALLEL UNLESS OTHERWISE SPECIFIED.
4. LEAD COLORS ARE OPTIONAL. LEADS MUST ALWAYS BE NUMBERED AS SHOWN.

REV. DESC: REVISE TO SHOW OPTIONAL COLORS

REV. LTR: B BY: JLP REVISED: 04/09/99 11:30 TDR: 0178636

FILE: AAA00007514 MDL: -

MTL: -

CD0017A02

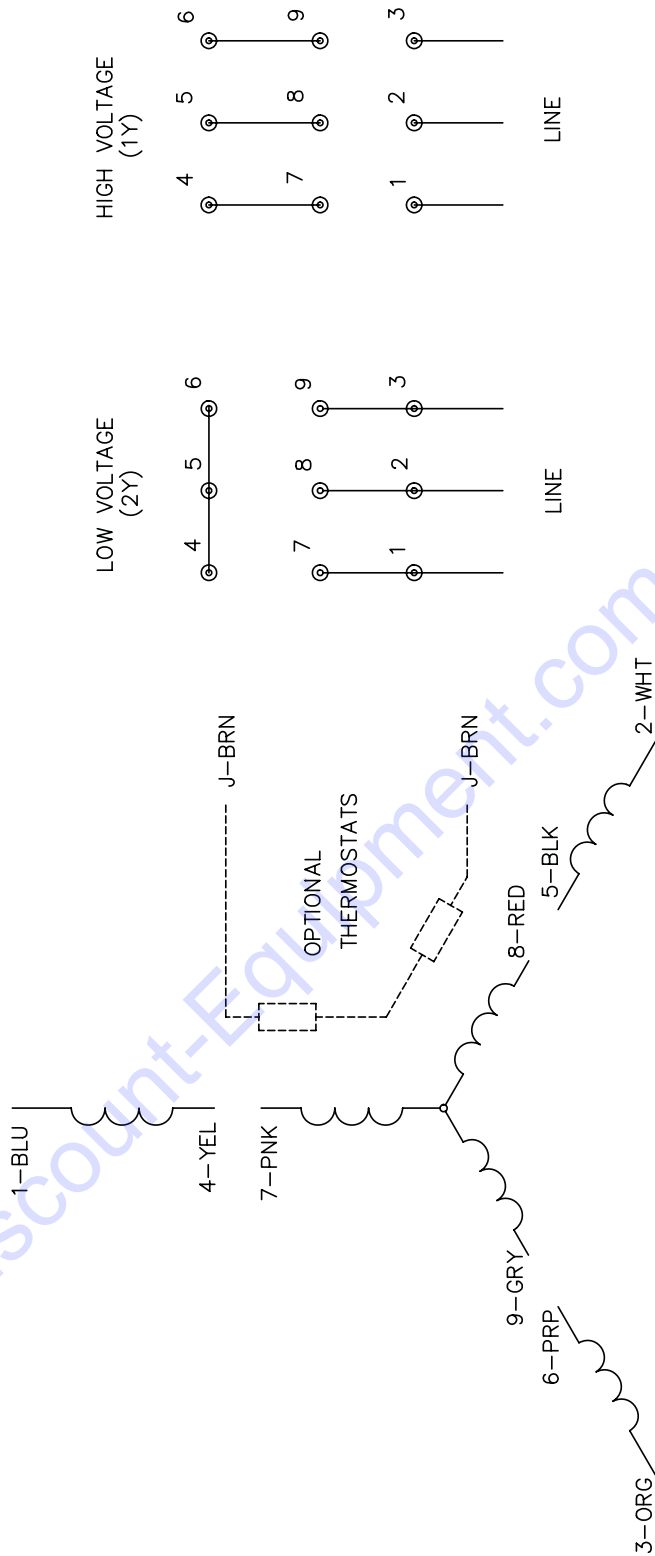
BALDOR ELECTRIC Co.

TYPE LC, SV, REV, 4 LEADS

CD0005

WIRING DIAGRAM FOR ELECTRIC UNITS - BALDOR M3613T 5HP 3PHASE-60HZ

CD0005



NOTES:

1. INTERCHANGE ANY TWO LINE LEADS TO REVERSE ROTATION.
2. OPTIONAL THERMOSTATS ARE PROVIDED WHEN SPECIFIED.
3. ACTUAL NUMBER OF INTERNAL PARALLEL CIRCUITS MAY BE A MULTIPLE OF THOSE SHOWN ABOVE.
4. LEAD COLORS ARE OPTIONAL. LEADS MUST ALWAYS BE NUMBERED AS SHOWN.

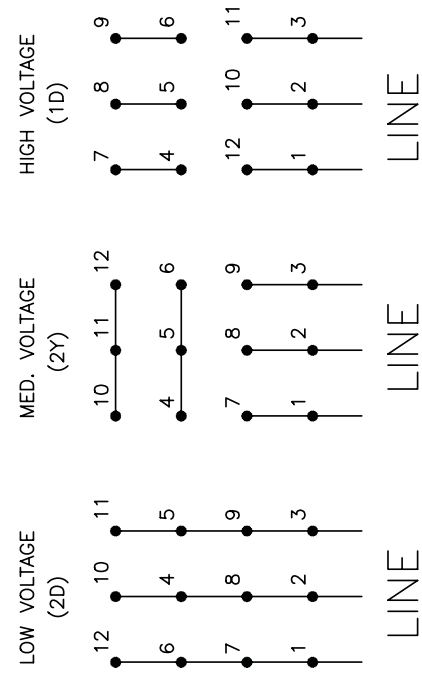
REV. DESC:	REVISE TO SHOW OPTIONAL COLORS
REV. LTR:	E BY: JLP
REVISED:	01/19/99 10:15
FILE:	AAA00005140
MDL:	-
MTL:	-
500000	

BALDOR ELECTRIC Co.
3PH, DV, 9 LEADS



WIRING DIAGRAM FOR ELECTRIC UNITS - BALDOR M3613T-50 5HP 3PHASE-50HZ

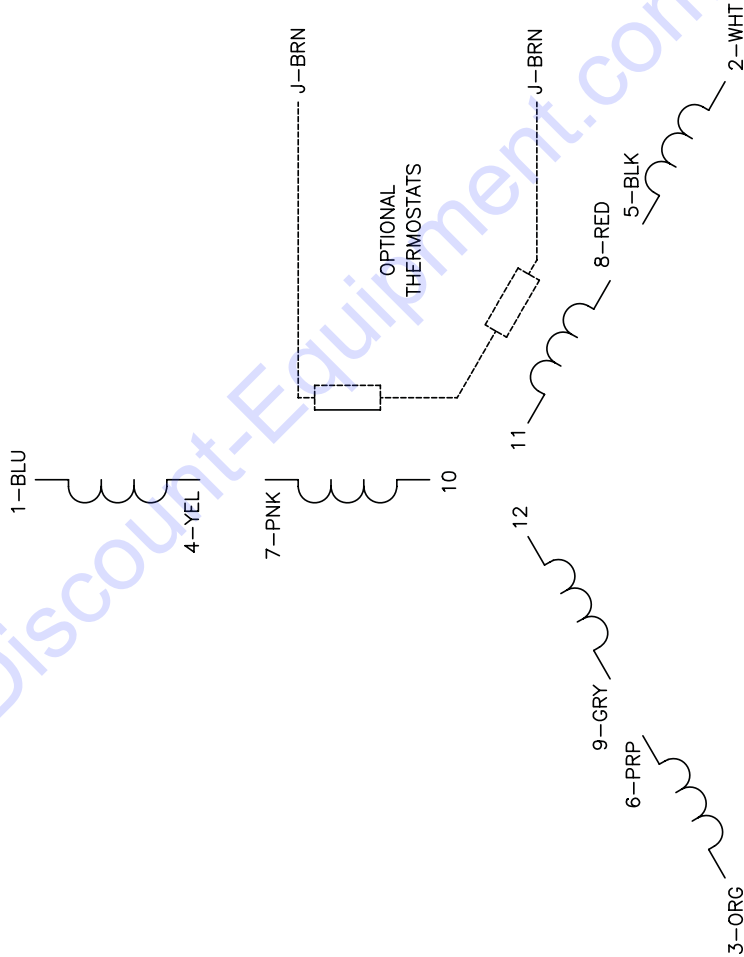
CD00044



LINE

LINE

LINE



NOTES:

1. INTERCHANGE ANY TWO LINE LEADS TO REVERSE ROTATION.
2. OPTIONAL THERMOSTATS ARE PROVIDED WHEN SPECIFIED.
3. ACTUAL NUMBER OF INTERNAL PARALLEL CIRCUITS MAY BE A MULTIPLE OF THOSE SHOWN ABOVE.
4. LEAD COLORS ARE OPTIONAL. LEADS MUST ALWAYS BE NUMBERED AS SHOWN.

CD0044

BALDOR ELECTRIC Co.

3PH, TV, 12 LEADS, 2D/2Y/1D

REV. DESC: REVISE TO SHOW OPTIONAL COLORS

REV. LTR: G BY: JLP REVISED: 01/19/99 4:09 TDR: 0171435

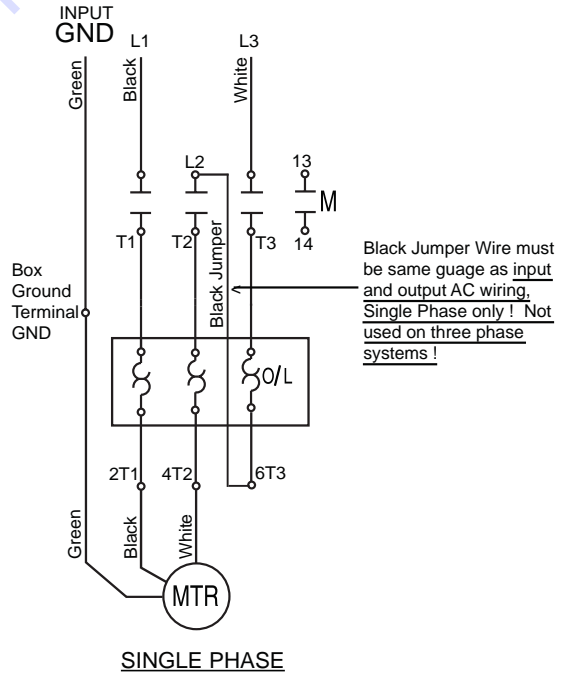
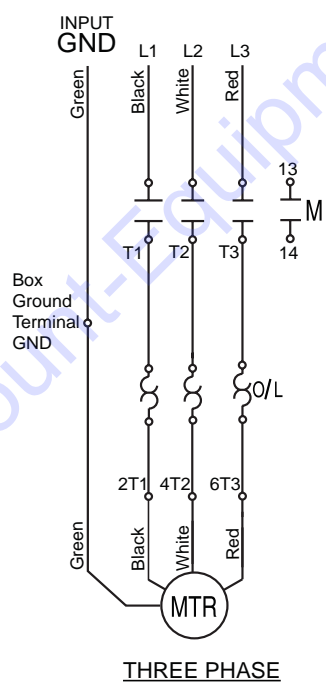
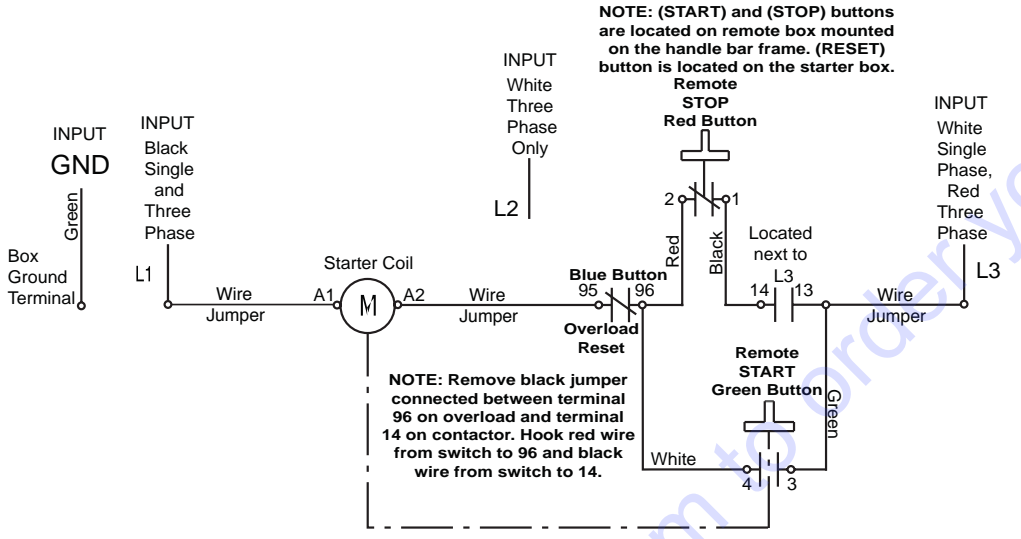
FILE: AAA00008373 MDL: -

MTL: -

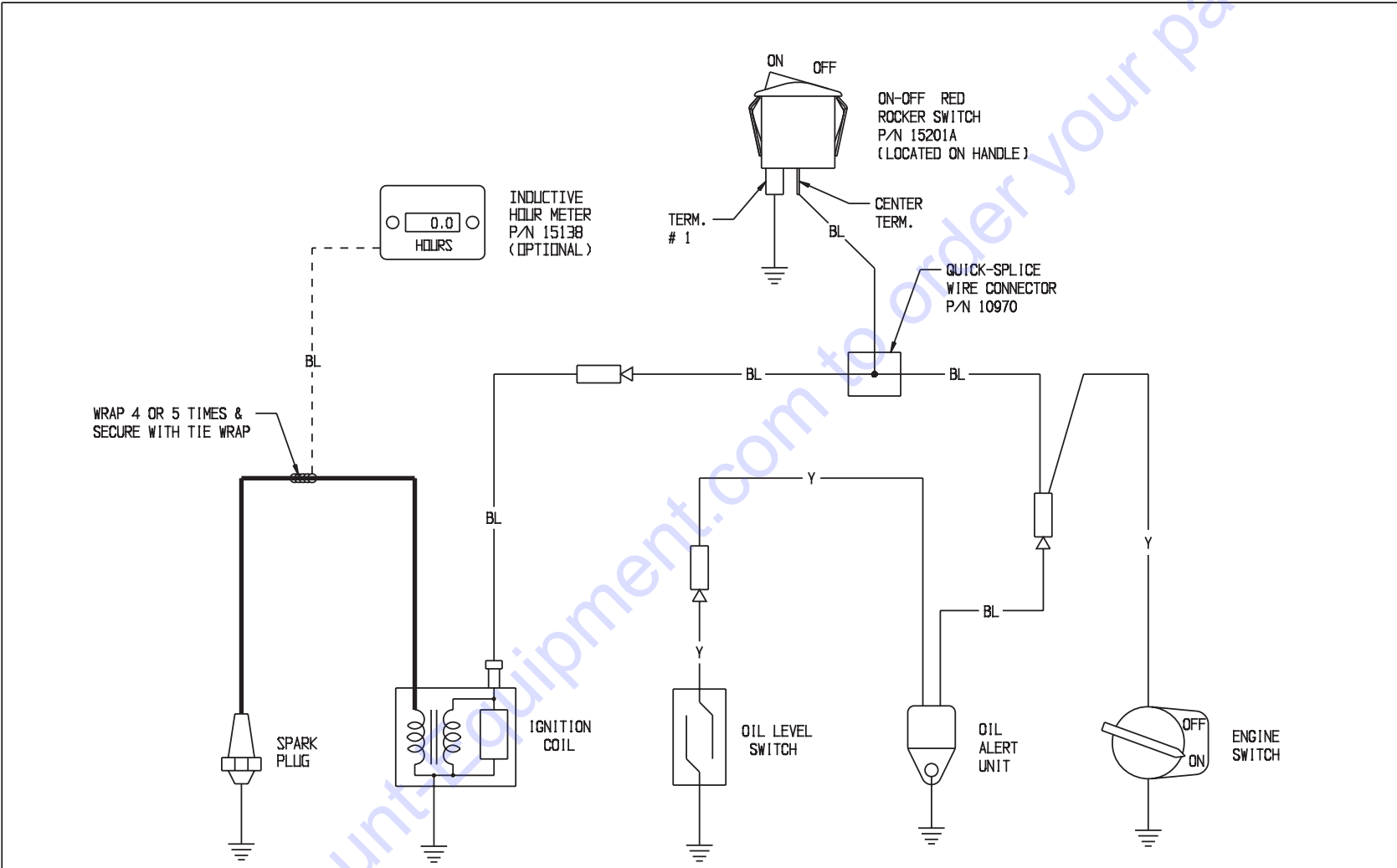
440000



WIRING DIAGRAM FOR STARTER & REMOTE SWITCH



WIRING DIAGRAM FOR HONDA ENGINE



WRAP 4 OR 5 TIMES & SECURE WITH TIE WRAP

COLOR CODES
 BL = BLACK
 Y = YELLOW

THIS DIAGRAM IS USED FOR UNITS THAT HAVE THE RECOIL STARTER & THE ROCKER STYLE "ON-OFF" SWITCH

LTR.	REVISIONS	DATE	BY

UNLESS OTHERWISE SPECIFIED DIMENSIONS ARE IN INCHES AND TOLERANCES ARE:
 FRACTIONS +/- 1/64
 DECIMALS +/- .005
 ANGLES +/- 1/2°

THE INFORMATION CONTAINED IN THIS DRAWING IS PROPRIETARY WITH EDCO AND MAY NOT BE USED OR REPRODUCED WITHOUT WRITTEN CONSENT.

EQUIPMENT DEVELOPMENT CO., INC.			
MODEL(S)	MISC	PART #	
TITLE			
WIRING DIAGRAM FOR HONDA ENGINE			
MATERIAL		DWG. REV.	
DWN. BY	JMA	DATE	10/11/07
CHK. BY		PLOT SCALE	FULL
		DWG. #	17785
		DWG. SIZE	C





A Division of Equipment Development Company, Inc.

PARTS BULLETIN

MOTOR TYPE CHANGE ON 5 H.P. 1-PHASE ELECTRIC EQUIPMENT EFFECTIVE OCT. 2008, STARTING W/ S/N 081010202

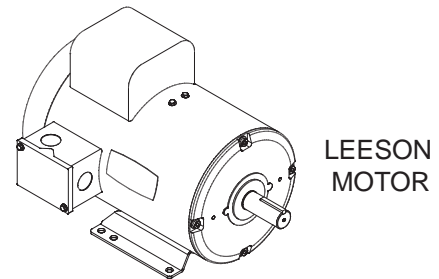
Leeson Motor (Cat. No. 131549) replaces Baldor (Cat. No. L3608T) on the following Equipment:

- CPM8 Scarifier/Planer
- TG10 Turbo Grinder
- 4EC Concrete Floor Grinder
- DS18 Walk Behind Saw
- SB14 Walk Behind Saw
- C10 Crack Saw
- MS20 Masonry Saw

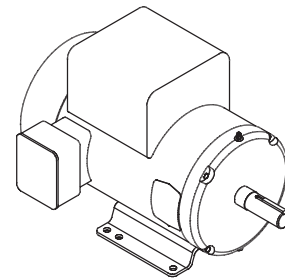
The Model Suffix for this Power Option will be 5L/230/1 (5HP Leeson/230 Volt/Single Phase).

Example: CPM8-5L/230/1

SPECIFICATION CHART		
	LEESON Cat. No. 131549	BALDOR Cat. No. L3608T
Part Number	16069	81026
Horse Power	5	5
Phase	1	1
Hertz	60	60
Volts	230	230
Full Load Amps	19.8	19.5
RPM	3500	3450
Frame	184T	184T
Shaft	1-1/8"	1-1/8"
Weight	93 Lbs.	86 Lbs.



LEESON MOTOR



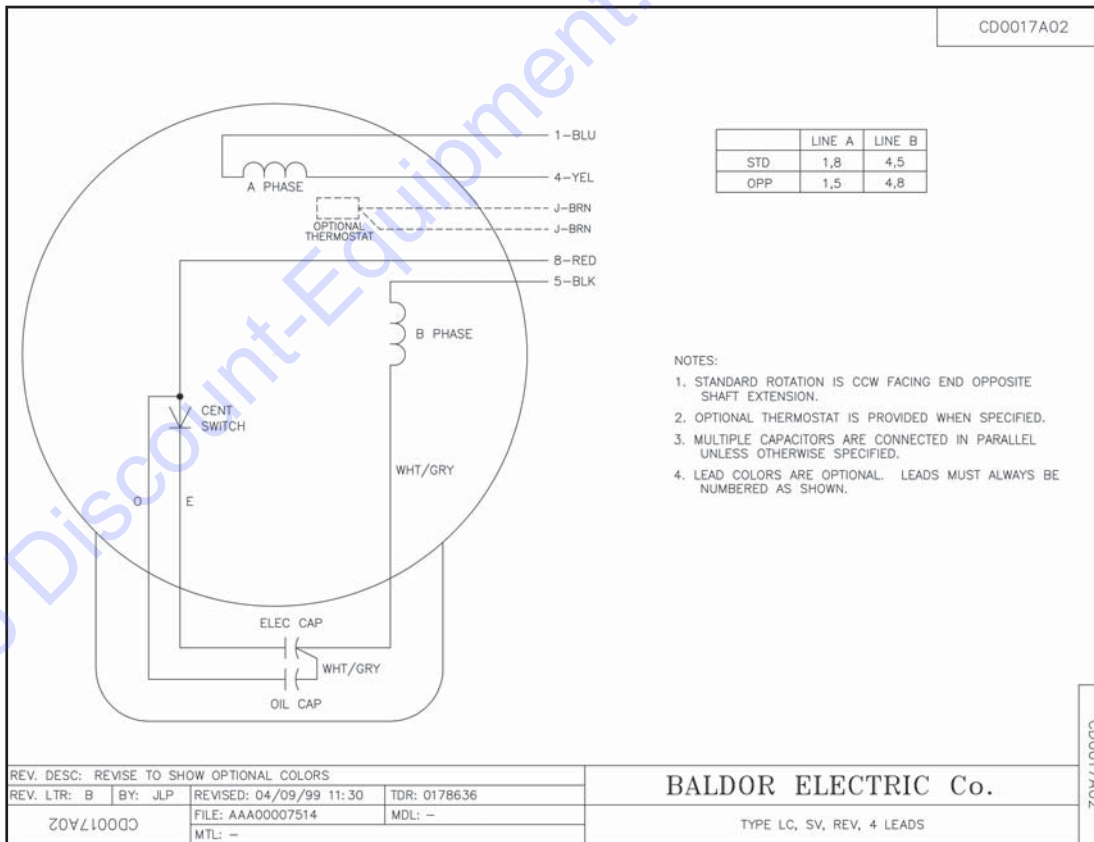
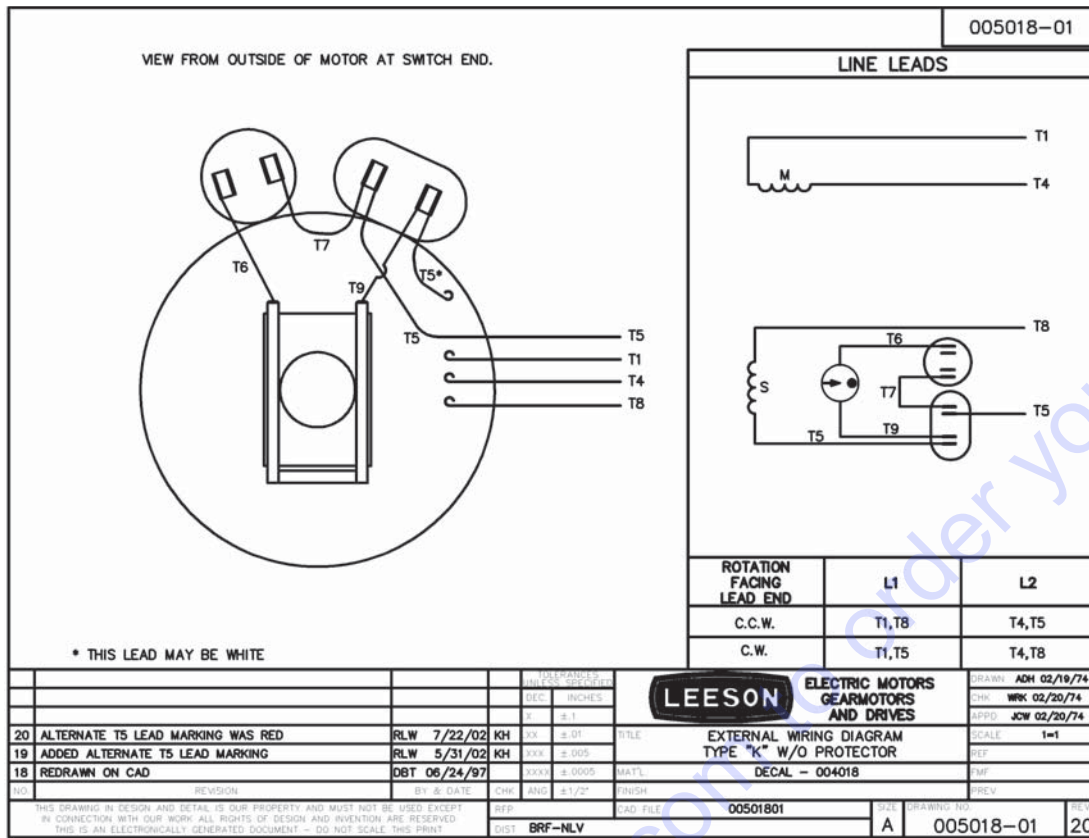
BALDOR MOTOR

REPLACEMENT CAPACITORS FOR LEESON MOTOR:

PART # 16521 - START CAPACITOR, LEESON 003049.04 390MFD 250V

PART # 16522 - RUN CAPACITOR, LEESON 003050.05 45MFD 370V

See the reverse side of this page for the Wiring Diagrams for these Motors.



PARTS FINDER

**Search Website
by Part Number**



**Search Manual
Library For Parts
Manual & Lookup Part
Numbers – Purchase
or Request Quote**

Search Manuals

Enter your information to help us find the right parts manual for your machine.

* Brand:

* Model:

* Serial:

* Part Number:

SEARCH

**Can't Find Part or
Manual? Request Help
by Manufacturer,
Model & Description**

Parts Order Form

Please fill in the following information to help us find the right part for your machine.

Manufacturer:	<input type="text"/>
Model:	<input type="text"/>
Description:	<input type="text"/>
Part Number:	<input type="text"/>
Quantity:	<input type="text"/>
Notes:	<input type="text"/>

Discount-Equipment.com is your online resource for quality parts & equipment.

Florida: **561-964-4949** Outside Florida TOLL FREE: **877-690-3101**

Need parts?

Click on this link: <http://www.discount-equipment.com/category/5443-parts/> and choose one of the options to help get the right parts and equipment you are looking for. Please have the machine model and serial number available in order to help us get you the correct parts. If you don't find the part on the website or on one of the online manuals, please fill out the request form and one of our experienced staff members will get back to you with a quote for the right part that your machine needs.

We sell worldwide for the brands: Genie, Terex, JLG, MultiQuip, Mikasa, Essick, Whiteman, Mayco, Toro Stone, Diamond Products, Generac Magnum, Airman, Haulotte, Barreto, Power Blanket, Nifty Lift, Atlas Copco, Chicago Pneumatic, Allmand, Miller Curber, Skyjack, Lull, Skytrak, Tsurumi, Husquvarna Target, Stow, Wacker, Sakai, Mi-T-M, Sullair, Basic, Dynapac, MBW, Weber, Bartell, Bennar Newman, Haulotte, Ditch Runner, Menegotti, Morrison, Contec, Buddy, Crown, Edco, Wyco, Bomag, Laymor, EZ Trench, Bil-Jax, F.S. Curtis, Gehl Pavers, Heli, Honda, ICS/PowerGrit, IHI, Partner, Imer, Clipper, MMD, Koshin, Rice, CH&E, General Equipment, Amida, Coleman, NAC, Gradall, Square Shooter, Kent, Stanley, Tamco, Toku, Hatz, Kohler, Robin, Wisconsin, Northrock, Oztec, Toker TK, Rol-Air, APT, Wylie, Ingersoll Rand / Doosan, Innovatech, Con X, Ammann, Mecalac, Makinex, Smith Surface Prep, Small Line, Wanco, Yanmar