

DIAMOND

PRODUCTS

CONCRETE SAW PARTS LIST

MODEL

CC1300-XL

March 2007

Part#: 1800666

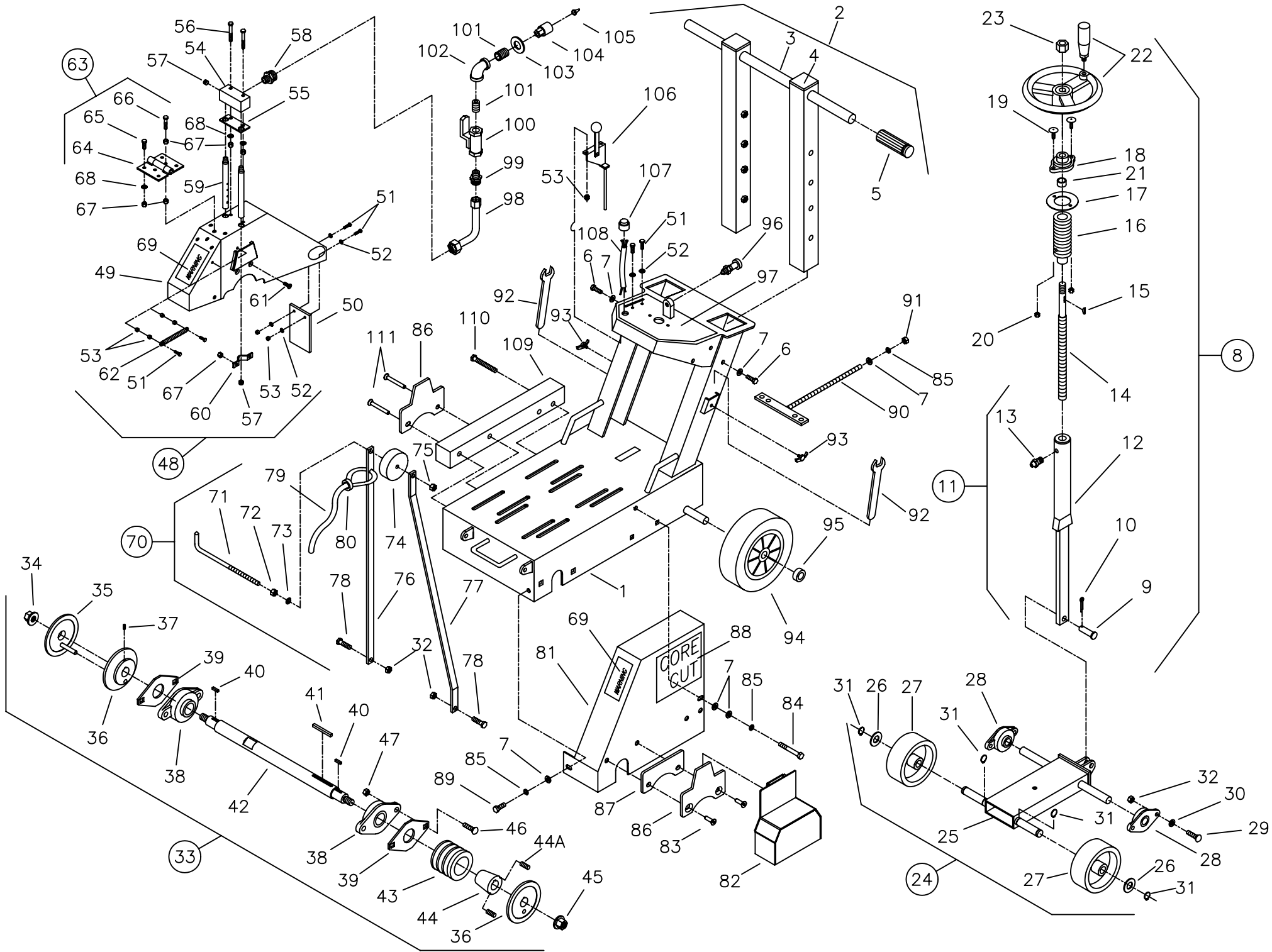
Intentionally Blank

Table of Contents

<u>Description</u>	<u>Page No.</u>
Frame Group.....	4 - 7
Engine Group – 9 Horsepower Gas.....	8
Engine Group – 13 Horsepower Gas.....	9
Electric Motor Group – 5 Horsepower, 1Phase.....	10
Electric Motor Group – 5 Horsepower, 3 Phase.....	11
Electric Motor Group – 10 Horsepower, 3 Phase.....	12 - 13
Water Tank Option Group.....	14
Decal Group.....	15
Wiring Diagram.....	16
Notes.....	18 - 19
Warranty.....	20

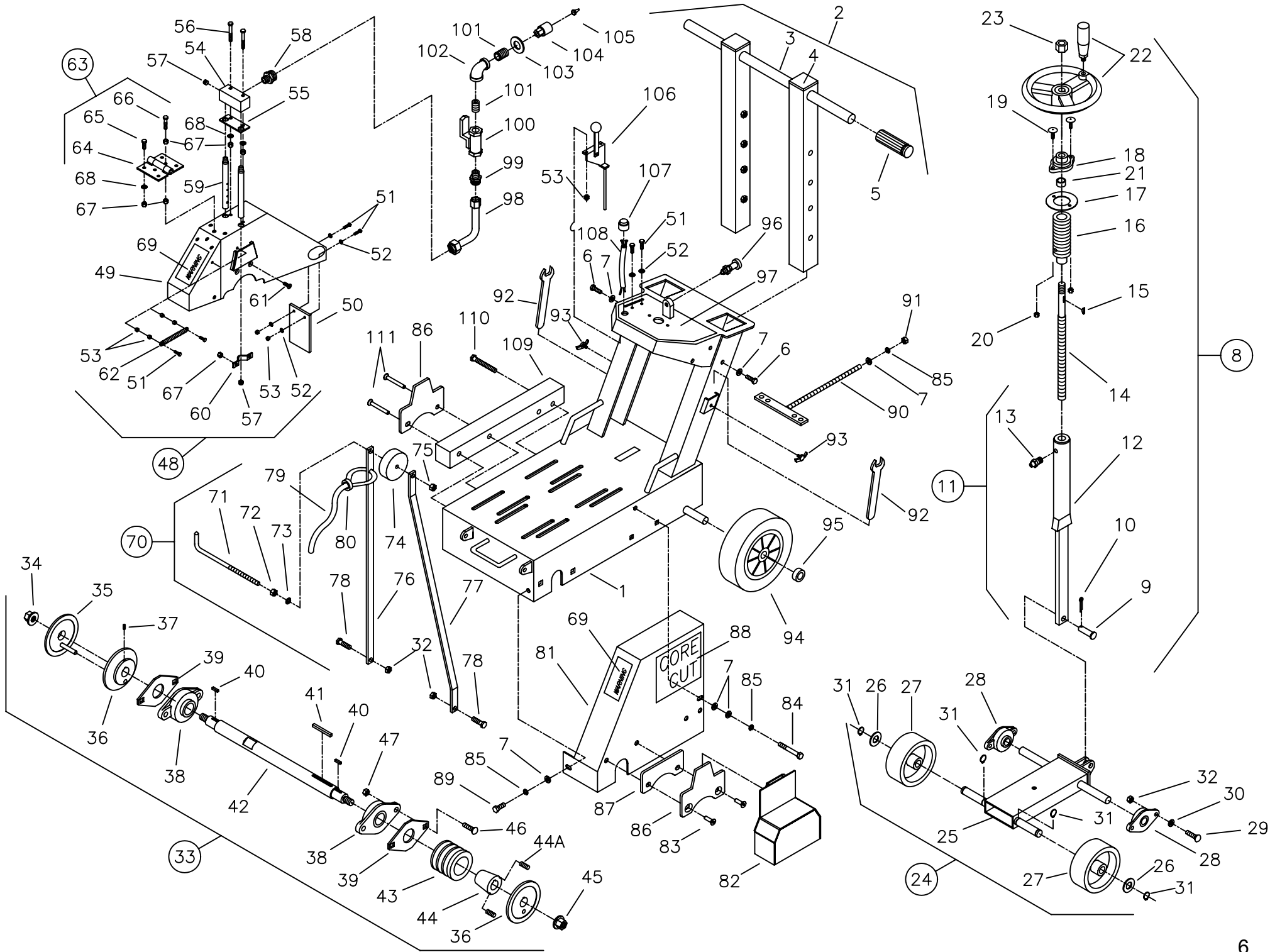
Quick Reference Service Filters/ Belts

<u>DP Part No.</u>	<u>Description</u>	<u>Manufacturer's Part No.</u>
2702018	Air Filter for 9 & 13 HP Honda	(Honda #17210-ZE3-505)
2704122	Air Filter for 9 HP Robin	(Robin #279-32607-07)
2704148	Fuel Filter for 9 HP Robin	(Robin #064-13600-10)
2500034	Blade Shaft Belt for 9 HP Honda & Robin	(Gates #3VX315)
2500380	Blade Shaft Belt for 13 HP Honda/Electric	(Gates #3VX300)



**CC1300XL-PARTS LIST
FRAME GROUP
DRAWING I**

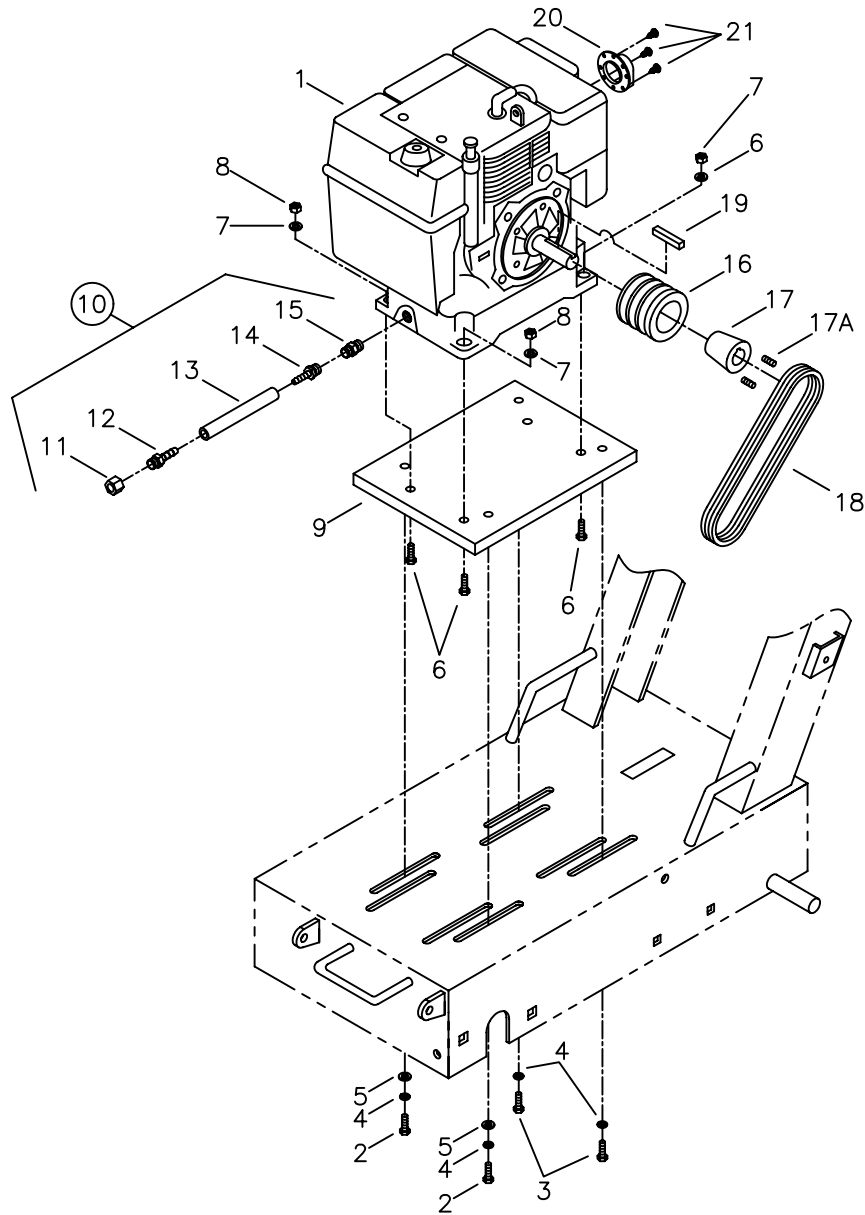
Diagram Number	Part No.	Qty. Req.	Description	Diagram Number	Part No.	Qty. Req.	Description
1	6048181	1	Frame (CC1300 XL - Version)	41	6010169	1	Key, 1/4" Sq. x 1-1/4" 
2	6048182	1	Handle Bar Assembly (Includes #3 - #7)	42	6048866	1	Blade Shaft 
3	6040213	1	Handle Bar Only		6048865	1	Blade Shaft (10 HP Electric)
4	2501441	2	Cap, 2" Sq. Poly Cap	43	2500025	1	Sheave, 3.65-3 Groove
5	2500636	2	Handle Grip		2500621	1	Sheave, 3.65-4 Groove (10 HP Electric)
6	2900596	2	Cap Screw, Hex Hd., 3/8-16 x 2-1/2"	44	2500337	1	Taper Bushing, 1-1/4" with Setscrews
7	2900014	6	Flat Washer, 3/8" SAE	44A	2900484	2	Set Screw, Soc. Hd., 3/8-16 x 5/8"
8	6048183	1	Screw Feed Assembly (Includes #9 - #23)	45	2900065	1	Flange Nut, 5/8"-11 Right Hand
9	2900354	1	Clevis Pin, 1/2" Dia. x 1-3/4"	46	2900322	4	Carriage Screw, M12 x 35mm
10	2900276	1	Cotter Pin, 1/8" x 1/2"	47	2900327	4	Lock Nut, M12 Nylon
11	6047928	1	Adjustment Shaft (Includes #12 - #13)		6048910	1	14" Blade Guard Assy(Includes #49 - #69) 
12	6047927	1	Adjustment Shaft without fitting		6048904	1	18" Blade Guard Assy(Includes #49 - #69)
13	2900062	1	1/8" NPT Grease Fitting		6048904	1	20" Blade Guard Assy(Includes #49 - #69)
14	6047929	1	Adjustment Screw	49	6048911	1	14" Blade Guard Only
15	2900352	1	Woodruff Key #506, 5/32" x 3/4" Dia.		6048909	1	18" Blade Guard Only 
16	6048036	1	Bellow		6048905	1	20" Blade Guard Only
17	6048038	1	Bellow Mount Washer	50	6048039	1	Splash Flap
18	2500807	1	Flange Block Bearing, 5/8"	51	2900309	6	Cap Screw, Hex Hd. M5 x 20mm
19	2900373	2	Carriage Bolt, 1/4-20 X 1-1/4"	52	2900016	6	Flat Washer, #10 USS
20	2900010	2	Locknut, 1/4 -20 Nylon	53	2900301	8	Lock Nut, M5 Nylon
21	6047931	1	Spacer Tube	54	6048123	1	Manifold
22	6040218	1	Handwheel, 8" Dia.	55	2500829	1	Manifold Gasket
23	2900355	1	Lock Nut, 5/8-18 Flex	56	2900244	2	Cap Screw, Hex Hd., M6 x 45mm
24	6048184	1	Front Axle Assy (Includes #25 - #32)	57	3200001	3	Pipe Plug, 1/8" NPT
25	6040212	1	Front Axle Weldment	58	3200002	1	Fitting, 3/4" M Garden - 3/8" M Pipe
26	2900003	2	Flat Washer, 3/4" SAE	59	6048283	2	Water Tube For 14" Blade Guard
27	2500005	2	Wheel, 5" Diameter		6048243	2	Water Tube For 18" Blade Guard
28	2500011	2	Flange Block Bearing, 3/4"		6010085	2	Water Tube For 20" Blade Guard
29	2900324	4	Carriage Screw, M10 x 30mm	60	6048155	2	Water Tube Clamp
30	2900326	4	Flat Washer, M14	61	2900308	4	Cap Screw, Flat Hd., M6 x 16mm
31	2501186	4	Retaining Ring, 3/4" External	62	2500066	1	Spring, 3/8" Dia. x 3" Lg (14" Blade Guard)
32	2900304	6	Lock Nut, M10 Nylon		2500067	1	Spring, 3/8" Dia. x 4" Lg (18", 20" Blade Guard)
 33	6041041	1	Blade Shaft Assy. (Except 10HP Electric) (Includes #34 - #47)	63	6048026	1	Hinge Assy. (14" Blade Guard)
	6040500	1	Blade Shaft Assy.,10 HP (Includes #34 - #47)	64	6048027	1	Hinge Assy. (18" & 20" Blade Guard) (Includes #67 - #71)
				65	2500270	1	Hinge Only
34	2900066	1	Flange Nut, 5/8-11 Left Hand		2900310	5	Cap Screw, Hex Hd., M6 x 20mm (6 required for 18" & 20" Blade Guards)
35	6048009	1	Outer Flange, 4-1/2" With Pin	66	2900312	1	Cap Screw, Hex Hd., M6 x 35mm (14" Guard)
36	6048008	2	Inner Flange, 4-1/2"				
37	2900076	2	Setscrew, Soc. Hd., 1/4-20 x 1/2"	67	2900302	13	Lock Nut, M6 Nylon (14" Blade Guard) (12 required for 18", 20" Blade Guards)
38	2500576	2	Flange Block Bearing, 1-1/4"				
39	6048037	2	Bearing Spacer	68	2900009	8	Flat Washer, 1/4" SAE
40	6048018	2	Key, 3/16" Sq. x 3/4"	69	1800001	2	Warning Label



**CC1300XL-PARTS LIST
FRAME GROUP
DRAWING I**

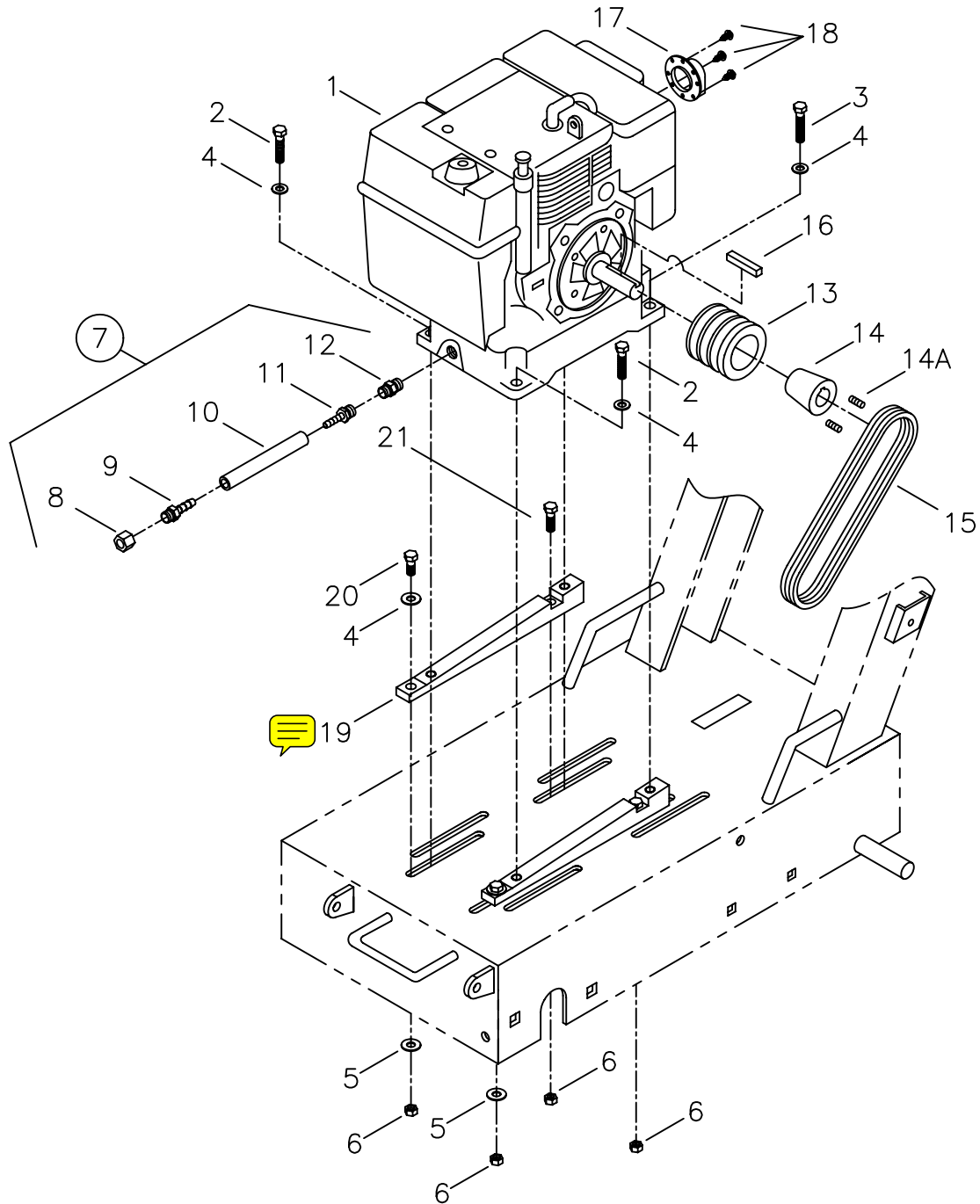
Diagram Number	Part No.	Qty. Req.	Description	Diagram Number	Part No.	Qty. Req.	Description
70	6048080	1	Pointer Assembly (Includes #32, #74 - #80)	91	2900325	1	Hex Nut, M10
71	2900032	1	Pointer Rod, 3/8-16	92	2500256	2	Wrench, 1-1/16"
	2900743	1	Pointer Rod, 3/8-16, (10hp Electric)	93	2900307	2	Wing Screw, M6 x 16mm
72	2900033	1	Hex Nut, 3/8-16	94	2501439	2	Wheel, 8" Diameter
73	2900006	1	Lock Washer, 3/8" Split	95	2400615	2	Set collar, 3/4"
74	2500624	1	Wheel, 3" Dia. with Bushing	96	2400138	1	Index Plunger, 1/2-13
75	2900018	1	Lock Nut, 3/8-16 Nylon	97	1800672	1	Operation Label
76	6048069	1	Pointer Bar, Straight	98	6011055	1	Hose Assembly
77	6048070	1	Pointer Bar, Offset	99	3200155	1	Fitting, 1/2" M Pipe to 3/4" M Garden Hose
78	2900315	2	Cap Screw, Hex Hd., M10 x 35mm	100	3200027	1	Water Valve
79	6048078	1	Pointer Rope	101	3200008	2	Close Nipple, 1/2" NPT
80	3200221	3	Rope Clamp	102	3200209	1	Elbow, 90 Degree, 1/2" F Pipe
	6048001	1	Belt Guard	103	2900425	1	Flat Washer, 7/8"
82	6048906	1	Shaft Guard	104	3200022	1	Fitting, 1/2" F Pipe To 3/4" F Garden Hose
83	2900744	2	Cap Screw, Flat Hd., M10 x 25mm	105	3200025	1	Filter Hose Washer
84	2900320	1	Cap Screw, Hex Hd., M10 x 100mm	106	2501565	1	Throttle Control (Honda Engines)
	2900321	3	Lock Washer, M10 Split		2501676	1	Throttle Control (Robin Engines)
86	6048908	2	Tapered Blade Guard Mount	107	2800001	1	Push Button Stop Switch (Gas Saw Only)
87	6048915	1	Tapered Guard Mount Spacer	108	6048789	1	Wire Harness Stop Switch (Gas Saw Only)
88	1800352	1	Saw Label	109	6048319	1	Blade Guard Spacer (10 HP Electric)
	2900314	1	Cap Screw, Hex Hd., M10 x 20mm	110	2900908	1	Cap Screw, Flat Hd., M10 x 80mm
90	6040313	1	Belt Adjustment Shaft (10 HP Electric)	111	2900908	2	Cap Screw, Flat Hd., M10 x 80mm (10 HP Electric)
	6040261	1	Belt Adjustment Shaft		2901010	2	Cap Screw, Flat Hd., M10 x 35mm

CC1300XL - PARTS LIST
ENGINE GROUP, 9 HP GAS
DRAWING II



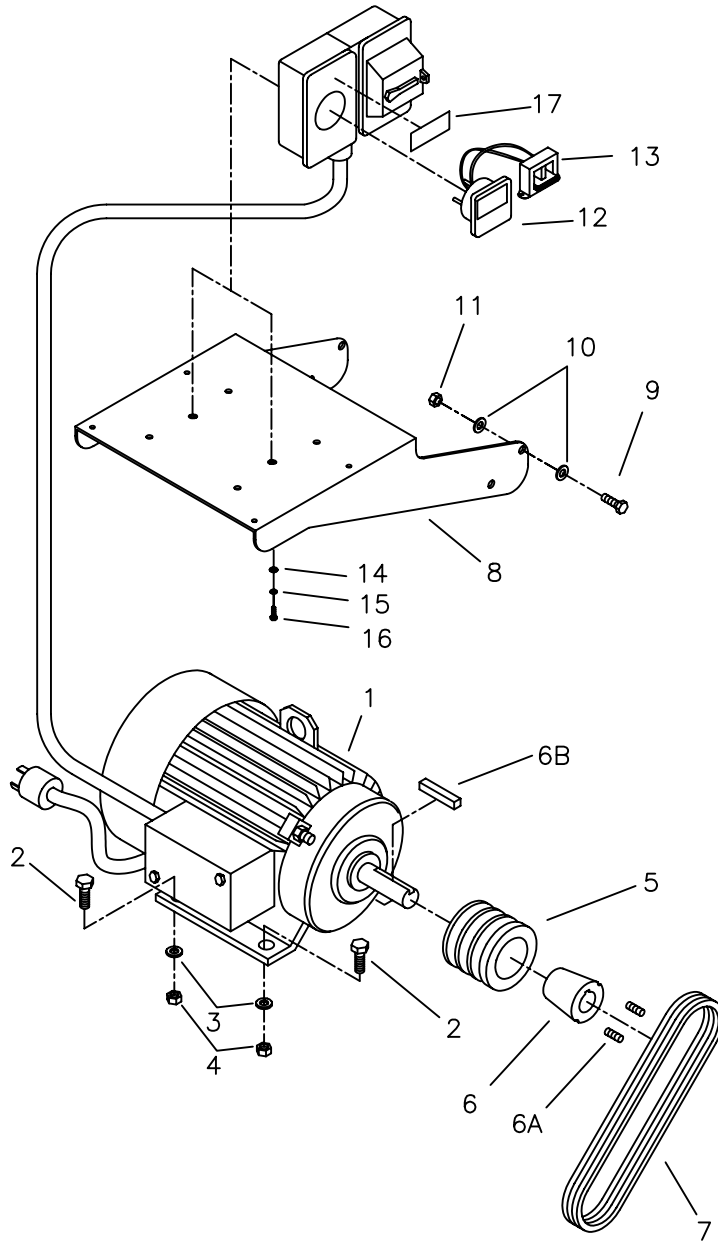
Item	Part No.	Qty.	Description	Item	Part No.	Qty.	Description
1	2600160	1	Engine, 9HP Honda	13	6048289	1	Oil Drain Hose, 1/4" I.D. x 6" (Honda)
	2600368	1	Engine, 9HP Robin		6048032	1	Oil Drain Hose, 1/4" I.D. x 9" (Robin)
2	2900314	2	Cap Screw, Hex Hd., M10 x 20mm	14	3200540	1	Fitting, 5/16" F. JIC to 1/4" Pushlock
3	2900333	2	Cap Screw, Hex Hd., M10 x 25mm				(For Honda Engines)
4	2900321	4	Lock Washer, M10 Split		3201270	1	Fitting, 1/4" M. Pipe to 1/4" Pushlock
5	2900473	2	Flat Washer, 3/8" USS				(For Robin Engine)
6	2900317	4	Cap Screw, Hex Hd., M10 x 45mm	15	3200539	1	Fitting, M12x1.5 M.Pipe to 5/16" M.JIC
7	2900014	4	Flat Washer, 3/8" SAE				(For Honda Engines)
8	2900304	4	Lock Nut, M10 Nylon		3201269	1	Fitting, M14x1.5 M. to 1/4" F.Pipe
9	6048186	1	Adaption Plate (9HP Honda Only)				(For Robin Engine)
	6048822	1	Adaption Plate (9HP Robin Only)	16	2500022	1	Sheave, 2.65 - 3 Groove
10	6048029	1	Oil Drain Hose Assy (Honda Engines)	17	2500026	1	Taper Bushing, 1" w/ Set Screws
			(Includes #11 - #15)	17A	2900076	2	Set Screw, 1/4-20 x 1/2"
	6048043	1	Oil Drain Hose Assy (Robin Engine)	18	2500034	3	V-Belt, 3VX315
			(Includes #11 - #15)	19	6048134	1	Key, 1/4 Sq. x 2-1/4"
11	3200006	1	Cap, 1/4" JIC	20	2700554	1	Muffler Exhaust Deflector (Honda Only)
12	3200040	1	Fitting, 1/4"M. JIC to 1/4" Pushlock	21	2900206	3	Self-Tapping Screw, #8-32 x 3/8" (Honda Only)

CC1300XL - PARTS LIST
ENGINE GROUP, 13 HP GAS
DRAWING III



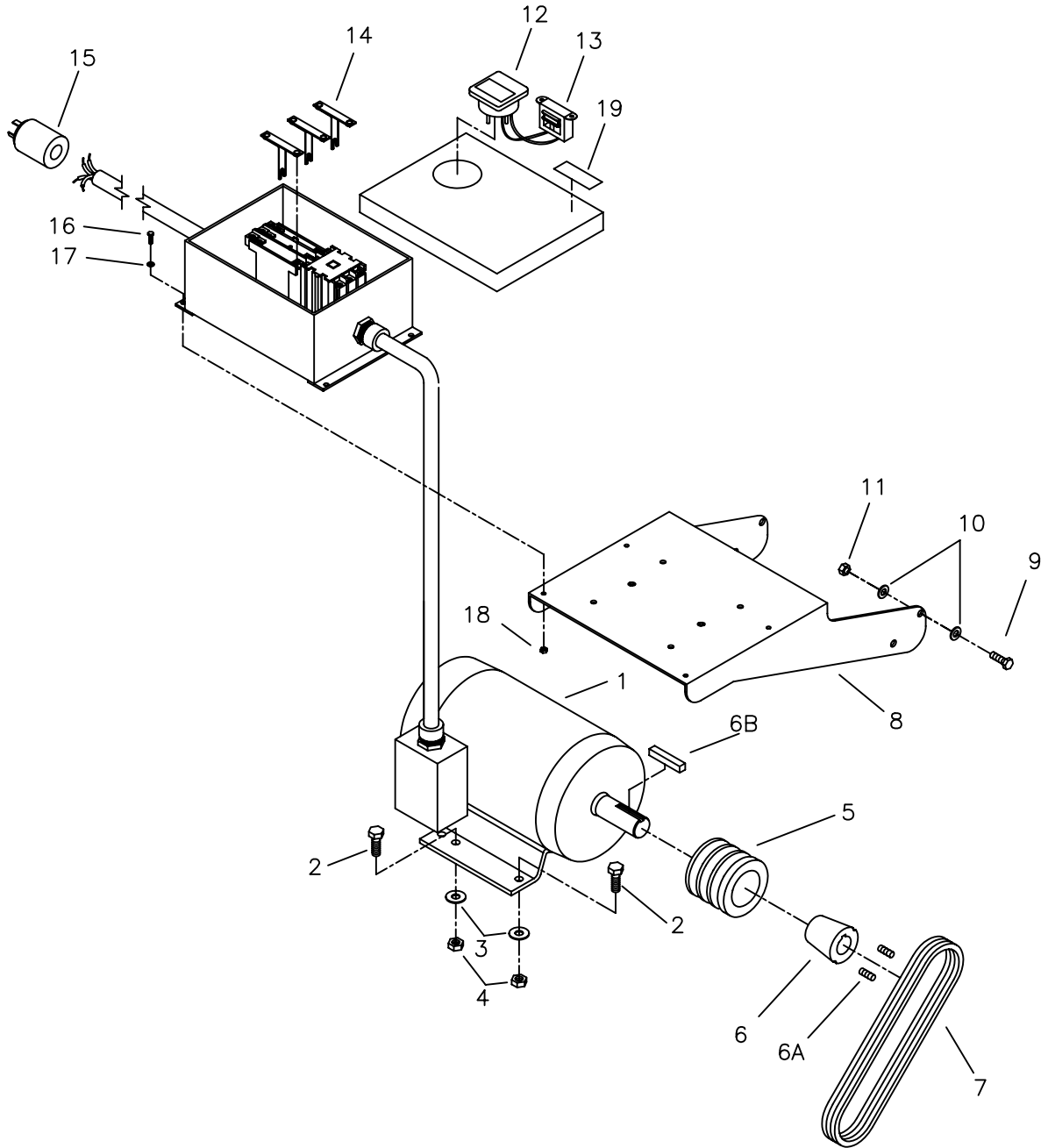
Item	Part No.	Qty.	Description	Item	Part No.	Qty.	Description
1	2600116	1	Engine, 13HP Honda	12	3200539	1	Fitting, M12x1.5 M.Pipe to 5/16" M.JIC
2	2900317	2	Cap Screw, Hex Hd., M10 x 45mm	13	2500022	1	Sheave, 2.65 - 3 Groove
3	2900318	2	Cap Screw, Hex Hd., M10 x 50mm	14	2500026	1	Taper Bushing, 1" w/ Set Screws
4	2900014	6	Flat Washer, 3/8" SAE	14A	2900076	2	Set Screw, 1/4-20 x 1/2"
5	2900473	2	Flat Washer, 3/8" USS	15	2500380	3	V-Belt, 3VX300
6	2900304	4	Lock Nut, M10 Nylon		2500034	3	V-Belt, 3VX315 (20" Blade guard only)
7	6048029	1	Oil Drain Hose Assembly (Includes #8- #12)	16	6048134	1	Key, 1/4 Sq. x 2-1/4"
8	3200006	1	Cap, 1/4" JIC	17	2700554		Muffler Exhaust Deflector
9	3200040	1	Fitting, 1/4"M. JIC to 1/4" Pushlock	18	2900206	3	Self-Tapping Screw, #8-32 x 3/8"
10	6048289	1	Oil Drain Hose, 1/4" I.D. x 6"	19	6043196	2	Motor Mount Adapter
11	3200540	1	Fitting, 5/16" F. JIC to 1/4" Pushlock	20	2900333	2	Cap Screw, Hex Hd., M10 x 25mm
				21	2900315	2	Cap Screw, Hex Hd., M10 x 35mm
				Items 19, 20 & 21 for use with 20" blade guard only			

CC1300XL - PARTS LIST
ELECTRIC MOTOR GROUP, 5-HP, 1-PH
DRAWING IV

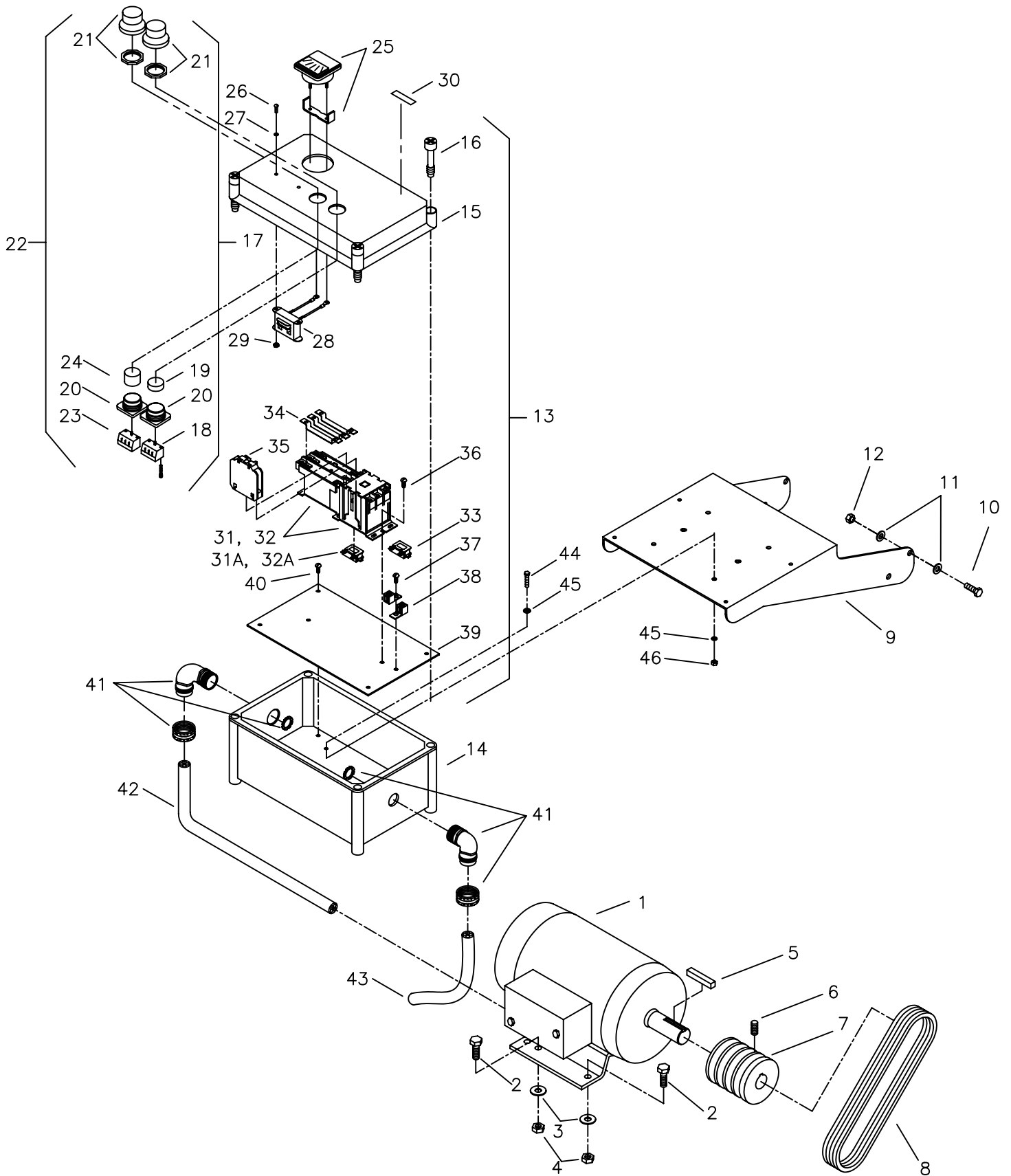


Item	Part No.	Qty.	Description	Item	Part No.	Qty.	Description
1	2600278	1	Electric Motor 5HP, 230V, 1PH	9	2900005	4	Cap Screw, Hex Hd., 3/8-16 x 1"
2	2900223	4	Cap Screw, Hex Hd., M10 x 30 mm	10	2900014	8	Flat Washer, 3/8" SAE
3	2900473	4	Flat Washer, 3/8" USS	11	2900018	4	Lock Nut, 3/8-16 Nylon
4	2900304	4	Lock Nut, M10 Nylon	12	2800254	1	Ammeter, 0-40 AC
5	2500022	1	Sheave, 2.65-3 Groove	13	2800085	1	Transformer, 115V
6	2500027	1	Taper Bushing, with Setscrews & Key	14	2900009	2	Flat Washer, 1/4" SAE
6A	2900076	2	Setscrew, 1/4-20 x 1/2"	15	2900024	2	Lock Washer, Split, 1/4" SAE
6B	REF	1	Key, 1/4 x 3/16 x 1-1/2"	16	2900144	2	Cap Screw, Hex Hd., 1/4-20 x 3/4"
7	2500380	3	V-Belt, 3VX300	17	1800810	1	Voltage Label, 230V
8	2501498	1	Electric Box Bracket				

CC1300XL - PARTS LIST
ELECTRIC MOTOR GROUP, 5-HP, 3-PH
DRAWING V



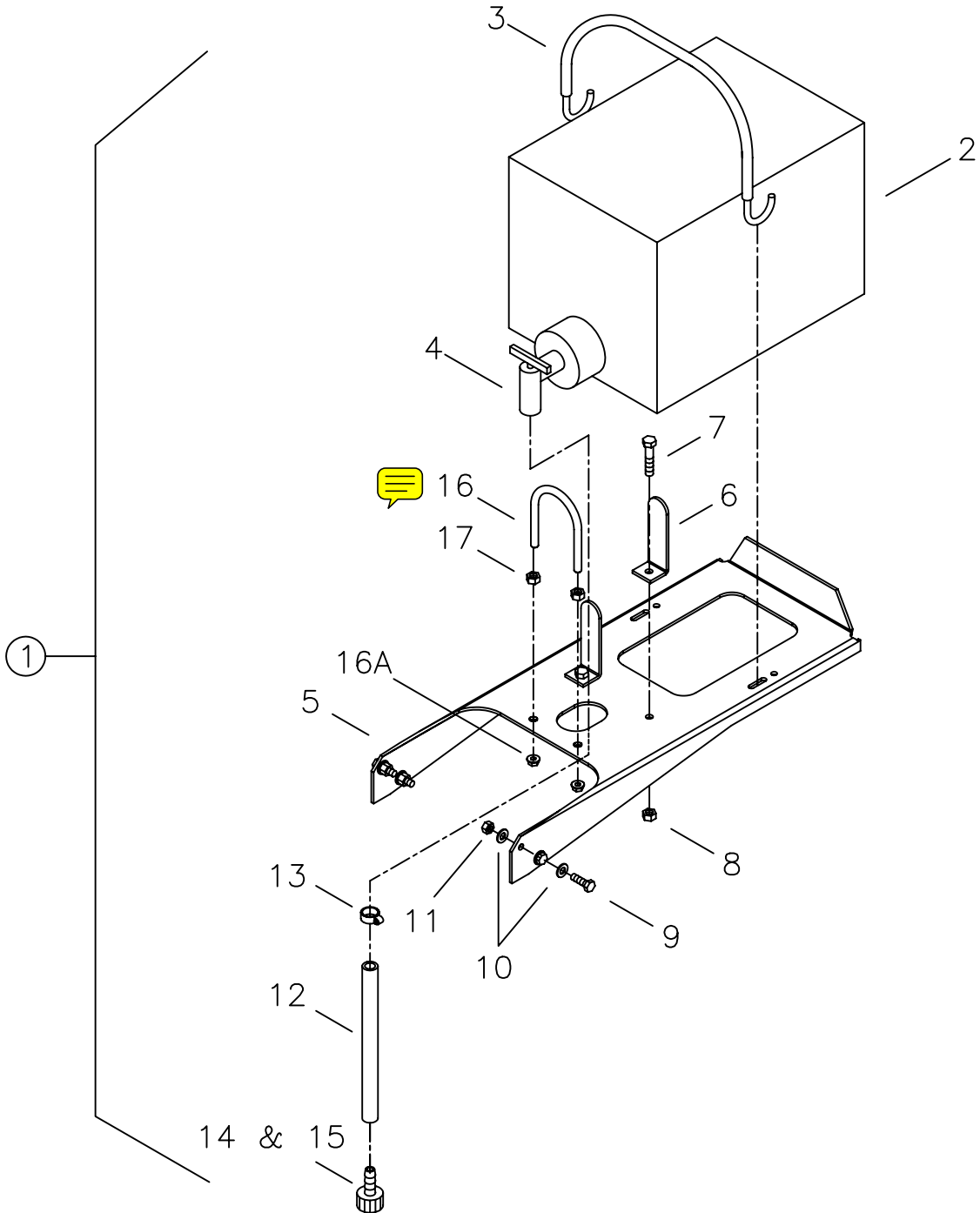
Item	Part No.	Qty.	Description	Item	Part No.	Qty.	Description
1	2600296	1	Electric Motor 5HP, 230/460V, 3PH	12	2800253	1	Ammeter, 0-40 AC (230V)
2	2900223	4	Cap Screw, Hex Hd., M10 x 30 mm		2800252	1	Ammeter, 0-40 AC (460V)
3	2900473	4	Flat Washer, 3/8" SAE Hard	13	2800085	1	Transformer, 115V
4	2900304	4	Lock Nut, M10 Nylon	14	2800551	3	Overload Heater (230V)
5	2500022	1	Sheave, 2.65-3 Groove		2800536	3	Overload Heater (460V)
6	2500027	1	Taper Bushing, with Setscrews & Key	15	2800292	1	Plug, 250V
6A	2900076	2	Setscrew, 1/4-20 x 1/2"		2800412	1	Plug, 480V
6B	REF	1	Key, 1/4 x 3/16 x 1-1/2"	16	2900309	4	Cap Screw, Hex Hd., M5 x 20 mm
7	2500380	3	V-Belt	17	2900926	4	Flat Washer, M5
8	2501498	1	Electric Box Bracket	18	2900301	4	Lock Nut, M5 Nylon
9	2900005	4	Cap Screw, Hex Hd., 3/8-16 x 1"	19	1800810	1	Voltage Label, 230V
10	2900014	8	Flat Washer, 3/8" SAE		1800811	1	Voltage Label, 460V
11	2900018	4	Lock Nut, 3/8-16 Nylon				



CC1300LX - PARTS LIST
ELECTRIC MOTOR GROUP 10-HP, 3-PH
DRAWING VI

Diagram Number	Part No.	Qty. Req.	Description	Diagram Number	Part No.	Qty. Req.	Description
1	2600187	1	Electric Motor, 10HP-3 PH, 230/460V	25	2800253	1	Amp Meter, 0-40 AC (3-PH, 230V)
	2600243	1	Electric Motor, 10HP-3 PH, 575V		2800252	1	Amp Meter, 0-20 AC (3-PH, 460 & 575V)
2	2900223	4	Cap Screw, Hex Hd., M10 x 30mm	26	2900090	2	Machine Screw, Rd. Hd., #6-32 x 1/2"
3	2900473	4	Flat Washer, 3/8" USS	27	2900092	2	Lock Washer, #6 Split
4	2900304	4	Lock Nut, M10 Nylon	28	2800085	1	Transformer, 115V
5	6048046	1	Key, 5/16" Sq. x 1-1/2"	29	2900091	2	Hex Nut, #6-32
6	2900036	2	Set Screw, Soc. Hd., 5/16-18 x 1/4"	30	1800810	1	Voltage Label, 230V
7	6048897	1	Sheave, 2.65 - 4 Groove		1800811	1	Voltage Label, 460V
8	2500380	4	V-Belt, 3VX300		1800812	1	Voltage Label, 575V
9	2501498	1	Electric Box Bracket	31	2800332	1	Starter Assembly, 230V
10	2900005	4	Capscrew, Hex Hd., 3/8-16 x 1"	31A	2701327	1	Coil, Furnas 230V
11	2900014	8	Flat Washer, 3/8" SAE	32	6010363	1	Starter Assembly, 460V & 575V
12	2900018	4	Lock Nut, 3/8"-16 Nylon	32A	2700889	1	Coil, Furnas 460V
13	6040303	1	Starter Box	33	2800277	1	Coil, Furnas 575V (Replaces #20A)
			(Includes #14 - #24, #31, #31A, #35 - #40)	34	2700625	3	Heater # E67 for 230V
14	6040300D	1	Starter Box (Base)		2701457	3	Heater # E57 for 460V
15	6040295C	1	Starter Box (Cover)		2800276	3	Heater # E53 for 575V
16	2701414	4	Cover Screw, Starter Box 	35	2800335	1	Auxiliary Contact
17	6011305	1	Start Pushbutton Assembly	36	2900707	2	Machine Screw, Pan Hd., #10-32 x 1/4"
			(Includes #18 - #21)	37	2900708	1	Machine Screw, Rd. Hd., #10-32 x 1/2"
18	2701392	1	Contact Block N.O.	38	2800315	2	Grounding Lug
19	2701391	1	Cap, Black Flush	39	6040301C	1	Starter Box, Back Panel
20	2701390	2	Push Button Operation Body	40	2900676	4	Machine Screw, Pan Hd., M4 x 8mm
21	2800222	2	Boot, Clear Protective	41	2800041	2	Connector, 3/4" Cord, 90 Degree 
22	6011306	1	Stop Pushbutton Assembly	42	6040423	1	Cord, S.O. 10/4 x 54"
			(Includes #20, #21, #23, #24)	43	6040424	1	Cord, S.O. 10/4 x 42"
23	2800200	1	Contact Block N.C.	44	2900311	4	Cap Screw, Hex Hd., M6 x 25mm
24	2800333	1	Cap, Red Extended	45	2900009	8	Flat Washer, 1/4" SAE
				46	2900302	4	Lock Nut, M6 Nylon

CC1300XL - PARTS LIST
 WATER TANK OPTIONS GROUP
 DRAWING VII

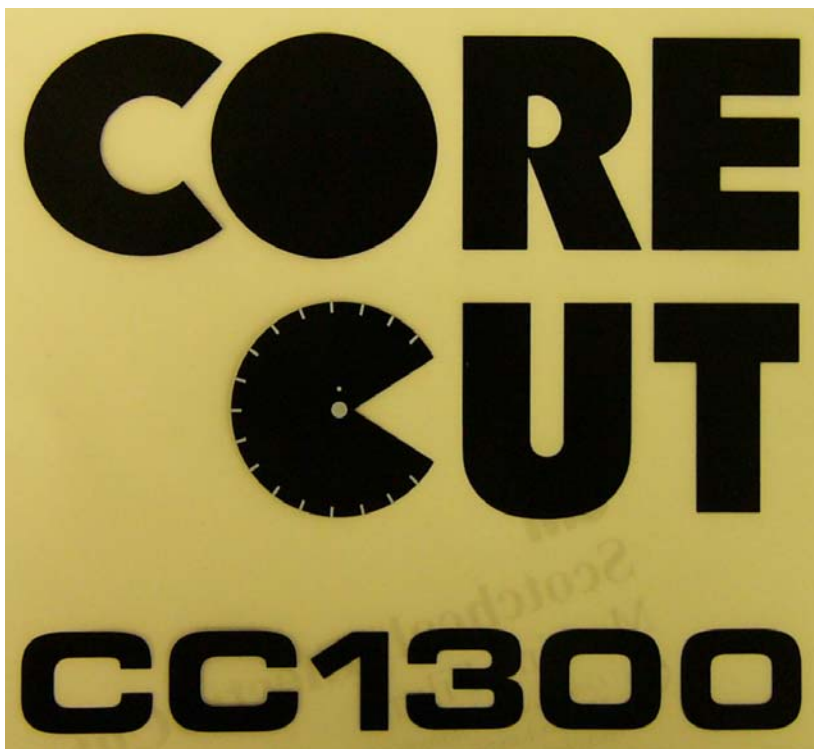


Item	Part No.	Qty.	Description	Item	Part No.	Qty.	Description
1	6048213	1	Water Tank Kit (Includes #2 - #15)	10	2900014	8	Flat Washer, 3/8" SAE
2	2501260	1	Water Tank	11	2900018	4	Lock Nut, 3/8-16 Nylon
3	2500586	1	Tiedown, Elastic 24"	12	6048197	1	Hose, 1/2" Clear
4	2501261	1	Petcock	13	3200016	1	Hose Clamp, #8
5	2501499	1	Water Tank Bracket	14	3200021	1	Fitting, 3/4" F. Garden to 1/2" Hose Barb
6	6048017	2	Water Tank Brace	15	3200238	1	Ferrule, 1/2" Hose, Brass
7	2900314	2	Cap Screw, Hex Hd., M10 x 20mm	16	25001786	1	U-Clamp, 2-1/2"
8	2900304	2	Lock Nut, M10 Nylon	16A	N/A	2	Flange Nut, 3/8-16
9	2900005	4	Cap Screw, Hex Hd., 3/8-16 x 1"	17	2900033	2	Hex Nut, 3/8-16

Decal Group



OPERATING DECAL
#1800672



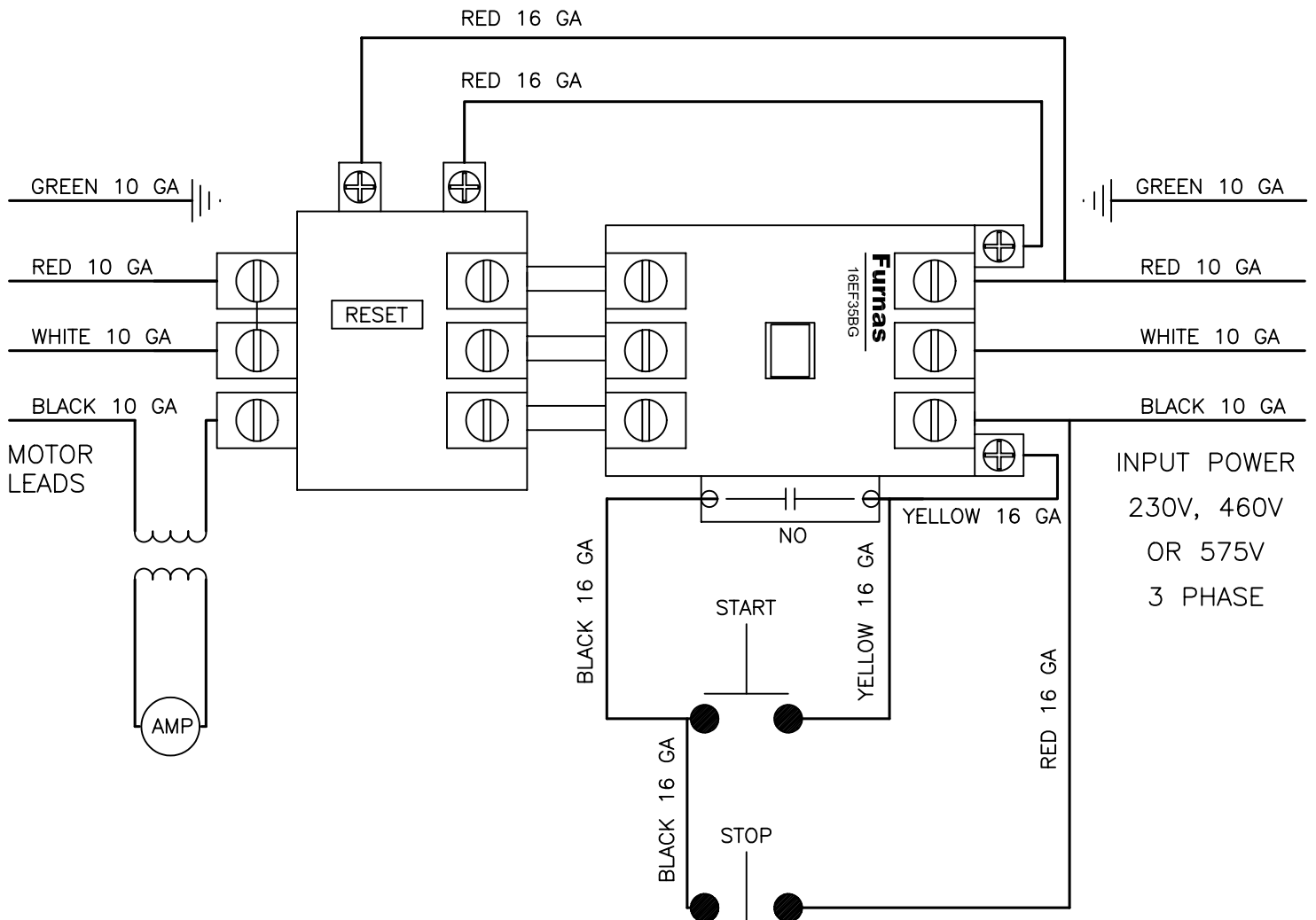
CORE CUT DECAL
#1800352



WARNING DECAL
#1800001
(2 REQ'D.)

WIRING SCHEMATIC FOR 10 HP, 3 PHASE, 230V, 460V OR 575V MOTORS

1. FOR 230V USE COIL #2701327, HEATERS #2700625 (3 REQ'D) & AMP METER #2800253
2. FOR 460V USE COIL #2700889, HEATERS #2701457 (3 REQ'D) & AMP METER #2800252
3. FOR 575V USE COIL #2800277, HEATERS #2800552 (3 REQ'D) & AMP METER #2800252



Intentionally Blank

EQUIPMENT AND PARTS WARRANTY

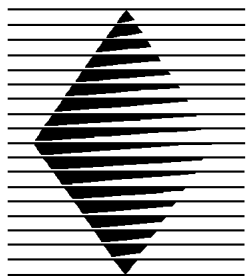
Diamond Products warrants all equipment manufactured by it against defects in workmanship or materials for a period of one (1) year from the date of shipment to Customer.

The responsibility of Diamond Products under this Warranty is limited to replacement or repair of defective parts at Diamond Products' Elyria, Ohio factory, or at a point designated by it, of such parts as shall appear to us upon inspection at such parts, to have been defective in material or workmanship, with expense for transportation and labor borne by Customer.

In no event shall Diamond Products be liable for consequential or incidental damages arising out of the failure of any Product to operate properly.

Integral units such as engines, electric motors, batteries, transmissions, etc., are excluded from this Warranty and are subject to the prime manufacturer's warranty.

THIS WARRANTY IS IN LIEU OF ALL OTHER WARRANTIES, EXPRESSED OR IMPLIED, AND ALL SUCH OTHER WARRANTIES ARE HEREBY DISCLAIMED.



DIAMOND PRODUCTS

333 Prospect Street, Elyria, Ohio 44035
(440) 323-4616 • (800) 321-5336 • Fax (440) 323-8689
www.diamondproducts.com