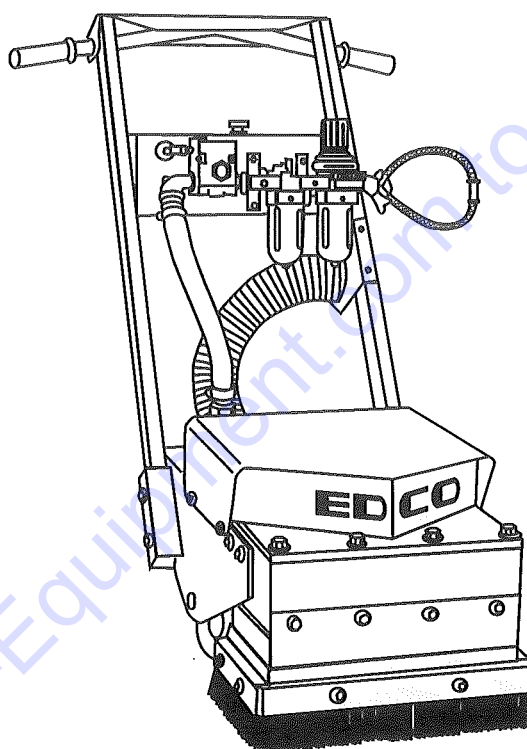




Instructions and Parts List Manual

Model CD-5



Air Powered Chip-Dek Scabbler



PARTS FINDER

**Search Website
by Part Number**



**Search Manual
Library For Parts
Manual & Lookup Part
Numbers – Purchase
or Request Quote**

Search Manuals

Enter your information to search for a parts manual or lookup a part number.

* Brand:

* Model:

* Serial:

* Part Number:

SEARCH

**Can't Find Part or
Manual? Request Help
by Manufacturer,
Model & Description**

Parts Order Form

Please fill in the following information:

Manufacturer:

Model:

Description:

Quantity:

Part Number:

Part Name:

Part Description:

Part Location:

Part Condition:

Part Status:

Part Date:

Part Time:

Part Cost:

Part Price:

Part Tax:

Part Total:

Part Notes:

Part Attachments:

Part Comments:

Part Status:

Part Date:

Part Time:

Part Cost:

Part Price:

Part Tax:

Part Total:

Part Notes:

Part Attachments:

Part Comments:

Discount-Equipment.com is your online resource for quality parts & equipment.

Florida: **561-964-4949** Outside Florida TOLL FREE: **877-690-3101**

Need parts?

Click on this link: <http://www.discount-equipment.com/category/5443-parts/> and choose one of the options to help get the right parts and equipment you are looking for. Please have the machine model and serial number available in order to help us get you the correct parts. If you don't find the part on the website or on one of the online manuals, please fill out the request form and one of our experienced staff members will get back to you with a quote for the right part that your machine needs.

We sell worldwide for the brands: Genie, Terex, JLG, MultiQuip, Mikasa, Essick, Whiteman, Mayco, Toro Stone, Diamond Products, Generac Magnum, Airman, Haulotte, Barreto, Power Blanket, Nifty Lift, Atlas Copco, Chicago Pneumatic, Allmand, Miller Curber, Skyjack, Lull, Skytrak, Tsurumi, Husquvarna Target, Stow, Wacker, Sakai, Mi-T-M, Sullair, Basic, Dynapac, MBW, Weber, Bartell, Bennar Newman, Haulotte, Ditch Runner, Menegotti, Morrison, Contec, Buddy, Crown, Edco, Wyco, Bomag, Laymor, EZ Trench, Bil-Jax, F.S. Curtis, Gehl Pavers, Heli, Honda, ICS/PowerGrit, IHI, Partner, Imer, Clipper, MMD, Koshin, Rice, CH&E, General Equipment, Amida, Coleman, NAC, Gradall, Square Shooter, Kent, Stanley, Tamco, Toku, Hatz, Kohler, Robin, Wisconsin, Northrock, Oztec, Toker TK, Rol-Air, APT, Wylie, Ingersoll Rand / Doosan, Innovatech, Con X, Ammann, Mecalac, Makinex, Smith Surface Prep, Small Line, Wanco, Yanmar

**READ AND UNDERSTAND THE INSTRUCTIONS THOROUGHLY
BEFORE ATTEMPTING TO OPERATE THIS EQUIPMENT.**

Death or serious injury could occur if the machine is used improperly.

**SAFETY MESSAGE**

The safety instructions are preceded by a graphic alert message of DANGER, WARNING or CAUTION.



A safety instruction that advises that death or serious injury will result if instructions are not followed and caution exercised.



A safety instruction that advises that death or serious injury can result if instructions are not followed and caution exercised.



A safety instruction that advises that injury could result if instructions are not followed.

**WARNING**

This equipment will create dust from the material being removed. That dust may contain a chemical known to the State of California to cause cancer and/or birth defects or other reproductive harm. As an example, paints and concrete contain chemicals known to the State of California to cause cancer and/or birth defects or other reproductive harm. Check the chemical properties of the material to be removed and take appropriate precautions.

It is the operator's responsibility to keep other people (workers, pedestrians, bystanders, etc.) away during operation. Block off the work area in all directions with roping, safety netting, etc. for a safe distance. Failure to do so may result in others being injured by flying debris or exposing them to harmful dust and noise.

Maintain a safe operating distance from flammable materials. Sparks from the cutting-action of this machine can ignite flammable materials or vapors.

**GENERAL INSTRUCTIONS****MACHINE PRECAUTIONS**

- Eye and ear protection must be worn at all times when the machine is in use. During normal operation, sound levels may exceed 92 dB(A).



- Wear appropriate clothing, footwear, and safety attire when operating this machinery. Steel toe safety shoes, padded gloves, non-fogging vented safety goggles or face screen, dust respirator (when dry cutting), hard hat (when appropriate for the job), and safety vest should be worn.
- Do not wear loose clothing that can get tangled in moving parts.



- Wear an approved dust/particle respirator when removing hazardous material or when operating dry.
- Maintain a safe operating distance to other personnel
- This equipment is designed for preparation of horizontal concrete or asphalt surfaces using Tungsten Carbide Bits. It is controlled by a single operator from the rear of the machine.
- Read and follow all safety decals.
- Avoid deck inserts, pipes, columns, openings, electrical outlets, or any objects protruding from slab surface.
- Stay alert; use common sense, and avoid unsafe conditions.

**OWNER RESPONSIBILITIES:**

- Never allow anyone to operate the machine in an impaired physical or mental state.
- Provide all instruction manuals for the operator to fully read and understand.
- Provide proper training and instruction to the operator.
- Maintain safety decals on the machine.

- Maintain the machine in safe operating condition with all guards securely in place, all mechanical fasteners tight, all controls in working order, and the machine configured for the job application.
- Maintain a copy of the equipment's operators manual with the machine for reference at all times.

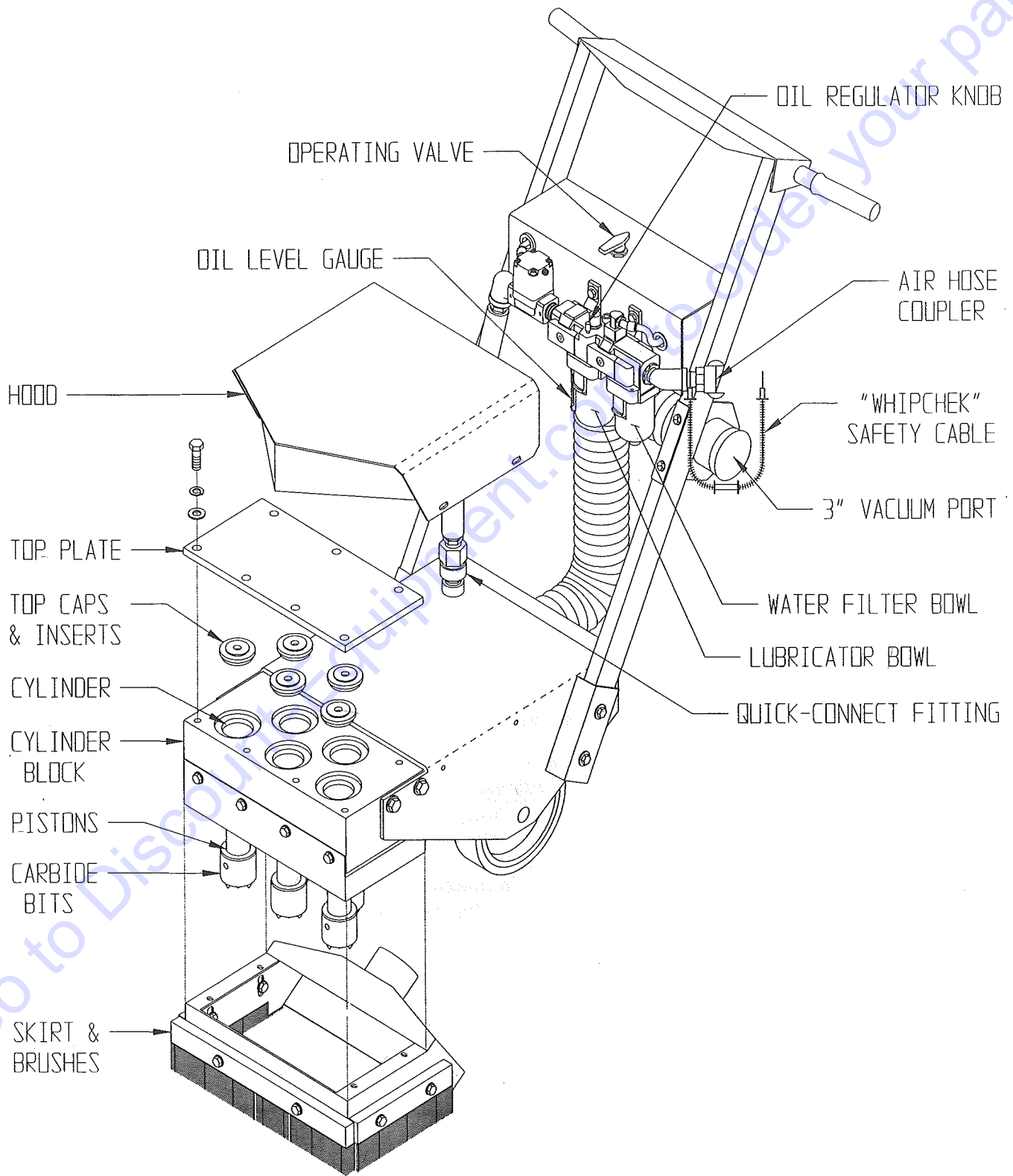
OPERATOR RESPONSIBILITIES:

- Be familiar with all aspects of the machine's operation and controls before applying power to the equipment.
- Use the correct accessory for the job being performed and material being removed. Make sure accessories are mounted correctly.
- Never operate this machine while under the influence of drugs or alcohol, while taking medications that impair the senses or reactions, or when excessively tired or under stress.
- Follow the instructions in the operators manual and exercise caution.
- Never leave the machine running unattended.
- Comply with all local safety and health regulations as well as EPA and OSHA regulations.

TABLE OF CONTENTS

- 1 - Safety & General Instructions
 - 2 - EDCO Model CD-5 "CHIP-DEK" Scabbler, Machine Layout
 - 3 - Instructions for EDCO Model CD-5 "CHIP-DEK" Scabbler
 - 4 - Maintenance, Trouble Shooting Guide
 - 5 - Illustration 1: Main Assembly
 - 6 - Parts Listing - Illustration 1: Main Assembly
 - 7 - Illustration 2: Filter and Lubricator Assembly
 - 8 - Parts Listing - Illustration 2: Filter and Lubricator Assembly
 - 9 - Parts Listing/Illustration 3: Piston & Cylinder Assembly
 - 10 - Tungsten Carbide Bits
- (Back Cover) - Limited Equipment Warranty, Ordering replacement parts

EDCO MODEL CD-5 "CHIP-DEK" SCABBLER



INSTRUCTIONS FOR EDCO MODEL CD-5 "CHIP-DEK" SCABBLER

BEFORE STARTING OPERATION:

For efficient operation of the CD-5, be sure to use a compressor with adequate output. A compressor output of 150 CFM @ 90 PSI or larger is recommended.

Before operating the machine check to make sure, the water bowl of the filter is empty. There is a manual drain valve at the bottom of the bowl.

Also, check the level of the lubricator. The proper oil to use is one with a viscosity of 32 centi-strokes (ISO-32). For example, Citgo AW-32 hydraulic oil or Lubriplate HO-32 hydraulic oil.

Tilt machine backwards and check the condition and secureness of the five carbide bits.

If the job requires dust free operation, hook-up the EDCO VAC-150 Industrial dust control vacuum system, or equivalent, to the 3 inch vacuum port (a 2" reducing adapter is also available) located directly under the handle bar assembly.

WARNING Determine if the slab is structurally sound and safe. While the CD-5 delivers a measured impact and should not damage the base, care should be taken that the slab is strong enough to withstand the impact of repeated hammering. **A slab less than 4 inches thick may crack under repeated hammering.**

OPERATING MACHINE:

Before starting, this machine be sure to read and understand this entire operators manual. Hook air hose (3/4" minimum) from a regulated air supply to the coupler on the handle of the CD-5 and do not exceed 60 feet of 3/4" hose.

WARNING Be sure to use a "whipchek" safety cable at this joint. Failure to do so could result in serious bodily injury or death. Before supplying the air hose with air, ensure that the operating valve on the console of the CD-5 is in the "OFF" position.

To start operation of the CD-5, grasp handle bars and turn operating valve to the "ON" position and pistons will start pounding the pavement. The CD-5 will feel as though the front head is floating. It will be necessary to move the machine so that it will not pound pockets into the slab. The CD-5 should be moved slowly in a side to side sweeping motion to ensure a consistently uniform removal of material. As the machine is operating, it may become necessary to adjust the hammering action of the CD-5. The addition of an air pressure regulator between the machine and your compressor will allow for this adjustment. The air pressure flowing to the pistons in the cylinder head may be adjusted from 0 PSI, minimum, to 90 PSI, maximum.

The air pressure should be regulated between 40 PSI and the maximum of 90-PSI depending on how aggressive the machine needs to be to accomplish the job. During the operation of the CD-5, it will be necessary to periodically stop the machine and visually inspect the level of condensation (water) that might accumulate in the water filter bowl located on the bottom of the air filter. If the accumulation of water exceeds the maximum level as marked on the water filter bowl, it will be necessary to drain the water filter bowl. To drain the water filter bowl, loosen the drain valve knob located on the bottom of the water filter bowl, let it completely drain then retighten.

In addition, during the operation of the CD-5 it will be necessary to maintain the correct amount of oil in the lubricator. This oil in the lubricator is essential to the operating life of the components in the cylinder head. The proper oil in the airflow reaching the pistons and cylinders will help flush away any contaminants as well as lubricate the close tolerance components and will leave a non-corrosive film to eliminate rusting of the surfaces. The adjustment knob on top of the lubricator controls the oil drip rate. Adjustment should only be made under normal steady flow condition. Turning the adjustment knob counter-clockwise will increase the oil drip rate and turning adjustment knob clockwise will decrease the oil drip rate. The knob is set at the factory all the way counter-clockwise to the maximum (+) position. Each piston should be receiving lubrication and have a light film of oil on the surface, just enough to "feel" it. If oil starts to appear on the surface, then decrease the oil drip rate. Excess oil will stain the concrete, Insufficient oil will result in damage to the equipment.

When work is complete, close air compressor outlet valve then turn CD-5 operating valve to the "ON" position to empty the high pressure air from the hose before disconnecting the machine from compressor. **Be sure to disconnect the CD-5 from the air source when not in use.**

MAINTENANCE:

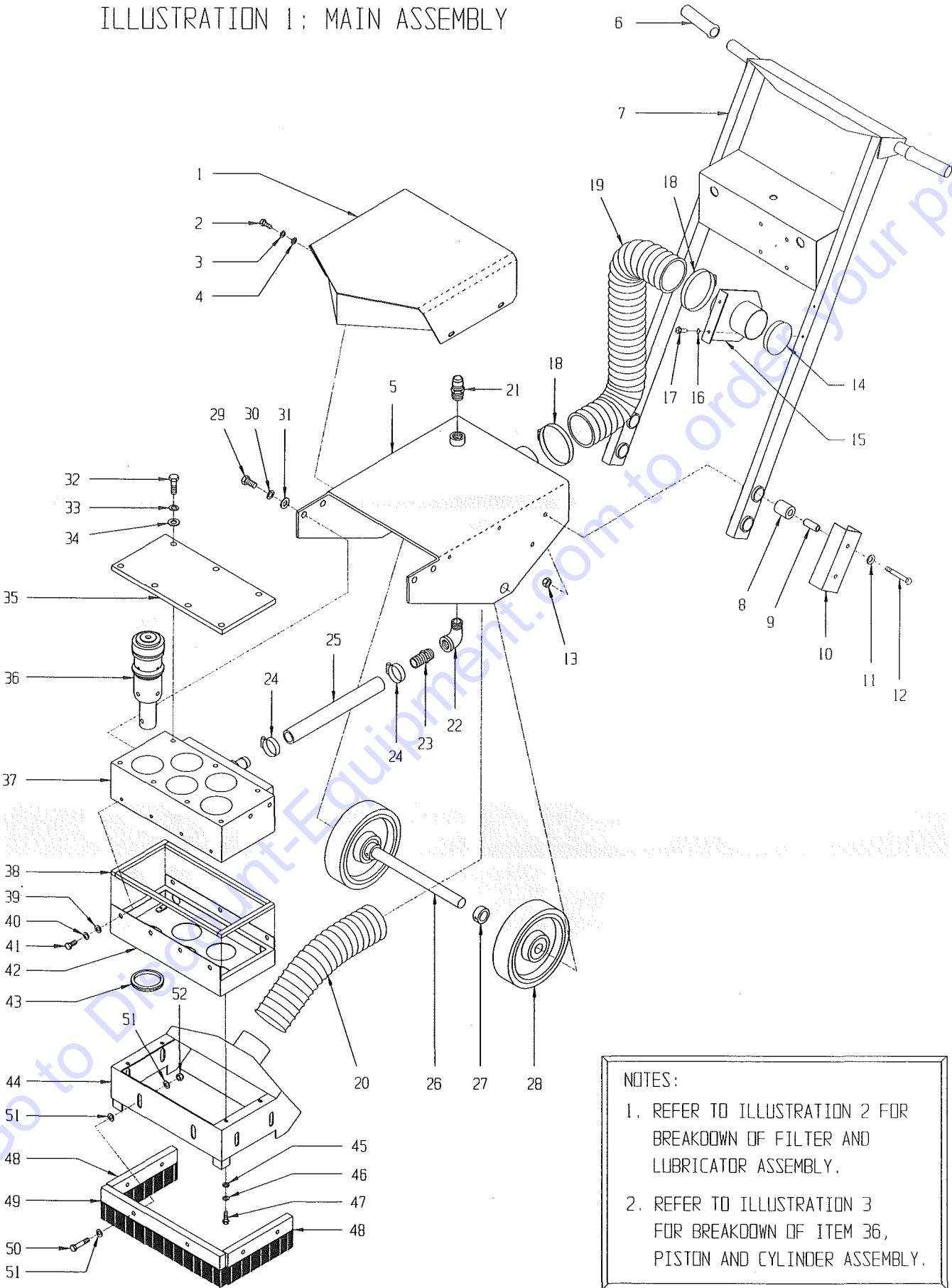
If the CD-5 is to be stored or not used **for a prolonged length of time** it is recommended that the following suggestions be followed:

- (1) Drain moisture from water filter.
- (2) Fill lubricator bowl with proper grade of oil.
- (3) Remove top plate from cylinder block, remove top caps, and generously apply the proper oil to top of pistons. Manually move the pistons up and down through their cycle several times to ensure all surfaces are coated with oil. Generously oil the top of the cylinders. Reassemble the machine taking care to ensure that the o-ring seals on the cylinder top caps are not damaged.

Table: 1

| TROUBLE SHOOTING GUIDE | | |
|---|--|---|
| FAULT | POSSIBLE | REMEDIES |
| <u>Machine will not operate.</u> | Cylinders or valves clogged with dirt. Insufficient air supply. Valve not turned on. Low oil level. | Strip and clean. Check compressor output. Turn on valve. Add proper amount and grade of oil. |
| <u>Finish of work is unsatisfactory.</u> | Incorrect or worn bits. | Replace with new or correct bits. |
| <u>Dust level is unacceptable.</u> | Operating environment. | Moisten area to be machined with water or utilize an industrial vacuum system. |
| <u>Work rate is too low.</u> | Insufficient air supply. Worn bits. | Check compressor output. Check hose size. Check clearance between piston, cylinder and liner – (.006" Max.) |

ILLUSTRATION 1: MAIN ASSEMBLY

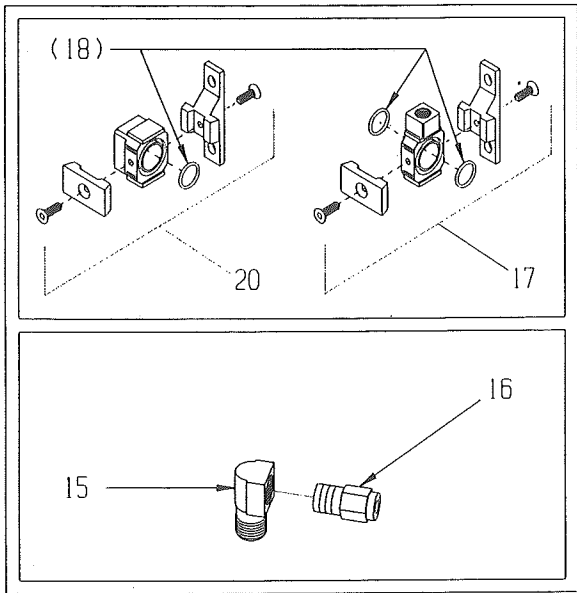


NOTES:
1. REFER TO ILLUSTRATION 2 FOR
BREAKDOWN OF FILTER AND
LUBRICATOR ASSEMBLY.
2. REFER TO ILLUSTRATION 3
FOR BREAKDOWN OF ITEM 36,
PISTON AND CYLINDER ASSEMBLY.

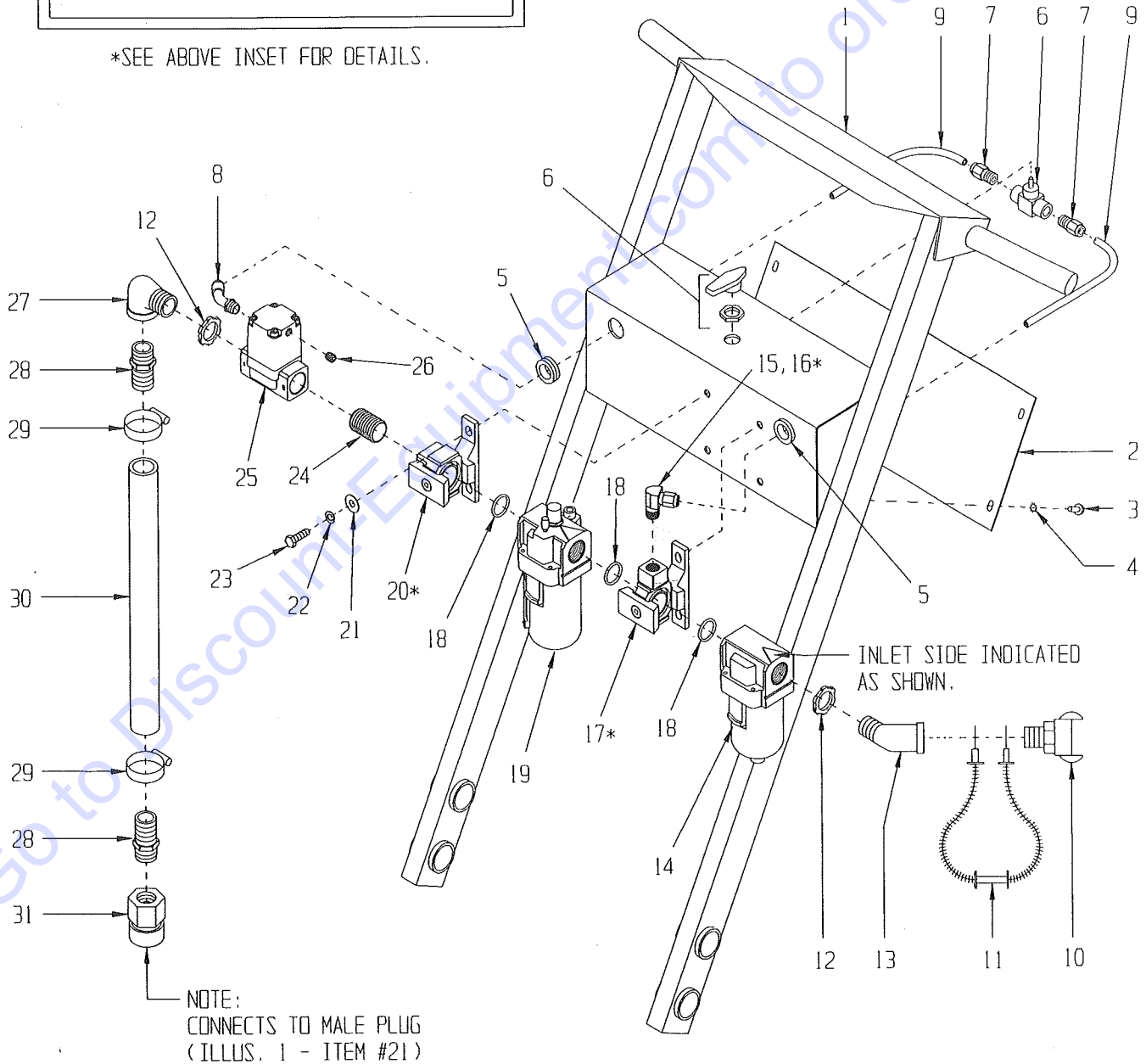
PARTS LISTING - ILLUSTRATION 1: MAIN ASSEMBLY

| Item # | Part # | Description | Qty. |
|--------|--------|---|------|
| 1 | 63115 | Hood | 1 |
| 2 | 10018 | Screw, Cap 1/4-20 x 3/4 | 4 |
| 3 | 10038 | Washer, Lock 1/4 | 4 |
| 4 | 10602 | Washer, Flat 1/4 | 4 |
| 5 | 63101 | Main Frame | 1 |
| 6 | 10608 | Grip, Hand, 1" Model AT | 2 |
| 7 | 63104 | Handle Bar | 1 |
| 8 | 63106 | Bushing, Rubber 1-1/4 x 5/8 x 1-1/2 | 4 |
| 9 | 63107 | Tube, Bushing Center 5/8 x 3/8 x 1-9/16 | 4 |
| 10 | 63105 | Bracket, Handle Bar Mounting | 2 |
| 11 | 10025 | Washer, Flat 3/8 | 4 |
| 12 | 10815 | Screw, Cap 3/8-24 x 2-3/4 | 4 |
| 13 | 10004 | Nut, Lock 3/8-24 | 4 |
| 14 | 64030 | Plug, Cap 3" | 1 |
| 15 | 63112 | Bracket, Vacuum Hose 3" | 1 |
| 16 | 10455 | Washer, Lock, Ext. Tooth #10 | 2 |
| 17 | 10846 | Screw, Self-Tap Hex Washer 1/4-20 X 1/2 | 2 |
| 18 | 10849 | Clamp, Hose, Size 52, Adj. To 3-3/4" | 2 |
| 19 | 63117 | Hose, Flex 3"ID x 26"L | 1 |
| 20 | 63118 | Hose, Flex 3"ID x 15"L | 1 |
| 21 | 63065 | Fitting, Quick-Connect Male Plug 3/4 NPT | 1 |
| 22 | 10727 | Elbow, Street 3/4NPT x 90 (Black) | 1 |
| 23 | 63047 | Barb, 1" Hose x 3/4MPT | 1 |
| 24 | 10784 | Clamp, Hose, Size 20, Adj. To 1-3/4" | 2 |
| 25 | 63119 | Hose, Air 1" ID x 12"L | 1 |
| 26 | 63053 | Axle Shaft 1" Rd. x 15"L | 1 |
| 27 | 10427 | Collar, Locking 1" ID | 2 |
| 28 | 63050 | Wheel 8 X 1-15/16 X 1" Brg., Poly Thread | 2 |
| 29 | 10356 | Screw, Cap 1/2-13 X 1-1/2 | 4 |
| 30 | 10045 | Washer, Lock 1/2 | 4 |
| 31 | 10312 | Washer, Flat 1/2 | 4 |
| 32 | 10356 | Screw, Cap 1/2-13 X 1-1/2 | 7 |
| 33 | 10045 | Washer, Lock 1/2 | 7 |
| 34 | 10312 | Washer, Flat 1/2 | 7 |
| 35 | 63023 | Plate, Cylinder Block Top | 1 |
| 36 | 63010 | Piston & Cylinder Assembly (Refer to Illus. 3 for Breakdown) | 5 |
| 37 | 63024 | Block, Cylinder | 1 |
| 38 | 63026 | Sealing Strips, Exhaust Box (2 each) 1/2" W x 3/8" Thk x 7" L 1/2" W x 3/8" Thk x 13-1/2" L | 1 |
| 39 | 10025 | Washer, Flat 3/8 | 7 |
| 40 | 10811 | Washer, Lock 3/8 | 7 |
| 41 | 10907 | Screw, Cap 3/8-16 x 3/4 | 7 |
| 42 | 63102 | Exhaust Box | 1 |
| 43 | 63110 | Grommet 2-1/2"ID x 1/16"Grv x 2-3/4"GD | 5 |
| 44 | 63103 | Skirt, 3" Vacuum | 1 |
| 45 | 10602 | Washer, Flat 1/4 | 4 |
| 46 | 10038 | Washer, Lock 1/4 | 4 |
| 47 | 11573 | Screw, Skt. Hd. Cap 1/4-20 X 3/4 | 4 |
| 48 | 63114 | Brush, Wooden 2" H x 8-1/2" L | 2 |
| 49 | 63113 | Brush, Wooden 2" H x 16" L | 1 |
| 50 | 10029 | Screw, Cap 3/8-24 x 1-3/4" | 6 |
| 51 | 10025 | Washer, Flat 3/8 | 18 |
| 52 | 10004 | Nut, Lock 3/8-24 | 6 |

ILLUSTRATION 2: FILTER & LUBRICATOR ASSEMBLY



*SEE ABOVE INSET FOR DETAILS.

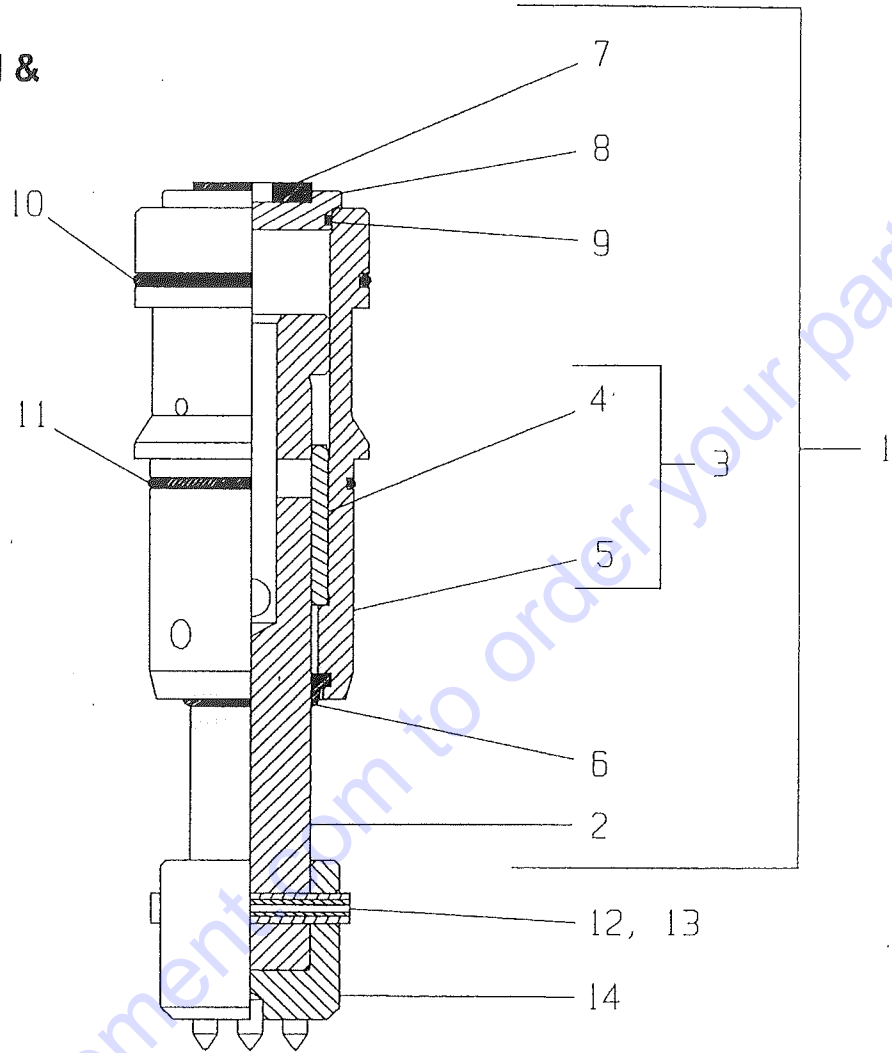


NOTE:
CONNECTS TO MALE PLUG
(ILLUS. 1 - ITEM #21)

PARTS LISTING – ILLUSTRATION 2: FILTER AND LUBRICATOR ASSEMBLY

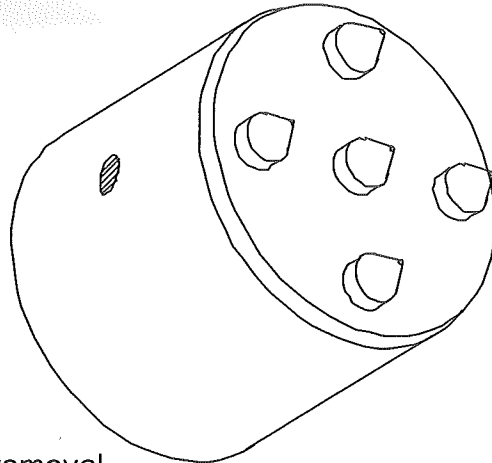
| ITEM | # PART | DESCRIPTION | QTY. |
|------|--------|--|------|
| 1 | 63104 | Handle Bar (Refer to Illus. 1 - Item # 7) | 1 |
| 2 | 63116 | Panel, Console Rear | 1 |
| 3 | 10877 | Screw, Self-Tap Hex Washer 10-24 x ½ | 4 |
| 4 | 10455 | Washer, Lock, Ext. Tooth #10 | 4 |
| 5 | 63111 | Grommet ¾" ID x 1/8" Grv. x 1" GD | 2 |
| 6 | 63004 | Valve, Ball W/ Vent ¼" Fem. NPT | 1 |
| 7 | 63034 | Fitting, Straight 5/16" Tube X ¼ MPT | 2 |
| 8 | 63057 | Fitting, Swivel 45°, 5/16" Tube X 1/8 BSPT | 1 |
| 9 | 63121 | Tubing, Nylon 5/16" OD x 10" L | 2 |
| 10 | 63067 | Coupler, Air Hose, ¾" MPT | 1 |
| 11 | 63040 | Cable, "Whipchek" Safety 1/8" x 20-1/4 | 1 |
| 12 | 10740 | Conduit Lock Nut ¾" NP | 2 |
| 13 | 50086 | Elbow, Street ¾" NPT x 45° (Black) | 1 |
| 14 | 63123 | Filter, ¾ NPT (NAF4000-N06-2) | 1 |
| 15 | 10730 | Elbow, Street ¼ NPT X 90 (Brass) | 1 |
| 16 | 63034 | Fitting, Straight 5/16" Tube x ¼" MPT | 1 |
| 17 | 63124 | Bracket, T-Type, Y51T-N02 (Includes 2 O-rings Item #18) | 1 |
| 18 | 63068 | O-Ring #216, 1/8" x 1-1/8" ID x 1-3/8" OD (Included W/ Items #17 & #20) | 3 |
| 19 | 63122 | Lubricator, ¾ NPT (NAL4000-N06-8) | 1 |
| 20 | 63064 | Bracket, T-Type Adapter, NE50T-N06 (Includes 1 O-Ring, Item #18) | 1 |
| 21 | 10213 | Washer, Flat 5/16" | 4 |
| 22 | 10801 | Washer, Lock 5/16" | 4 |
| 23 | 10806 | Screw, Cap 5/16-18 x 1" | 4 |
| 24 | 10577 | Pipe Nipple ¾NPT X 1-1/2 (Black) | 1 |
| 25 | 63125 | Valve, Process, ¾ NPT, VNA301A-20A | 1 |
| 26 | 63126 | Pipe Plug 1/8 BSPT | 1 |
| 27 | 10727 | Elbow, Street ¾" NPT x 90 (Black) | 1 |
| 28 | 63047 | Barb, 1" Hose x ¾" MPT | 2 |
| 29 | 10784 | Clamp, Hose, Size 20, Adj. To 1-3/4" | 2 |
| 30 | 63120 | Hose, Air 1" ID x 15-1/2" L | 1 |
| 31 | 63066 | Fitting, Quick-Connect Fem. Coupler ¾" | 1 |

ILLUSTRATION 3: PISTON & CYLINDER ASSEMBLY



| Item # | Part # | Description | Qty. |
|--------|--------|---|-------|
| 1 | 63010 | Piston & Cylinder Assembly, CD-5 (Includes Items 2 thru 11) | 5 |
| 2 | 63018 | Piston | 1 ea. |
| 3 | 63070 | Cylinder & Liner Assembly (Includes Items 4 and 5) | 1 ea. |
| 4 | 63015 | Cylinder (Do not replace separately) | - |
| 5 | 63014 | Liner (Do not replace separately) | - |
| 6 | 63019 | Wiper Ring, Piston | 1 ea. |
| 7 | 63011 | Insert, Top Cap | 1 ea. |
| 8 | 63012 | Cap, Cylinder Top | 1 ea. |
| 9 | 63013 | O-Ring #133, 3/32 x 1-13/16"ID | 1 ea. |
| 10 | 63016 | O-Ring #231, 1/8 x 2-5/8"ID | 1 ea. |
| 11 | 63017 | O-Ring #141, 3/32 x 2-5/16"ID | 1 ea. |
| 12 | 10007 | Pin, Roll 3/8 X 2-1/2 (Included W/Bit, Item #14) | 1 ea. |
| 13 | 63055 | Pin, Roll 7/32 x 2-1/2 (Included W/Bit, Item #14) | 1 ea. |
| 14 | - | Bit, Tungsten Carbide (Not Included) | 1 ea. |
| - | 18810 | 5-Point (Medium, General Purpose) | - |
| - | 18820 | 9-Point (Fine Surface Removal) | - |
| - | 18830 | Cross-Cut (Rough Surface Removal) | - |

TUNGSTEN CARBIDE BITS



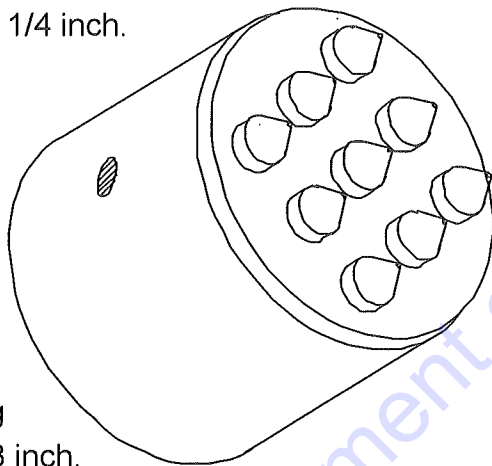
5 - POINT

Item no. 18810

General surface removal

Penetration up to 1/4 inch.

Use 5-Point bits for general purpose removal of concrete due to spalling, blistering, excess surface material, or in preparation of bonding new concrete overlays. Depth of removal is generally 1/4" or more and is dependent on the speed with which the unit is moved across the surface.



9 - POINT

Item no. 18820

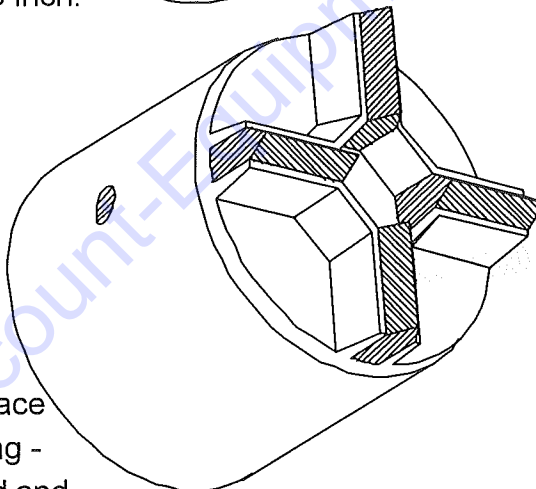
Laitance removal

Fine scabbling

Anti-slip surfacing

Penetration to 1/8 inch.

The 9-Point bits achieve surface removal of approximately 1/8". Creating an excellent bonding texture for overlays of thin coats of polymer concrete, epoxy or urethane. Also ideal for producing slip-resistant surfaces for fork trucks and other vehicular traffic.



CROSS-CUT

Item no. 18830

Demolition -

Fast, Rough Surface

removal. Grooving -

Repairs to spalled and deteriorated slabs.

CROSS-CUT bits may be used for fast, heavy surface removal of concrete for new overlays, repairs to deteriorated slabs, or roughening dairy barn floors to help prevent cattle from slipping. Depth of removal is generally 3/8" or greater dependent on speed with which unit is moved across the surface.

Bits are easily and quickly changed or replaced. The uses listed above are merely suggested. Your own trials will determine which bit fits your need best. Choose the correct type to do the job. Use a hammer and punch to drive out the bit retaining pins. Remove the bits, replace and drive the retaining pins back in securely. If pins are loose or worn replace with new tight fitting pins.

PARTS FINDER

**Search Website
by Part Number**



**Search Manual
Library For Parts
Manual & Lookup Part
Numbers – Purchase
or Request Quote**

Search Manuals

Enter your information to help us find the right parts manual for your machine.

* Brand:

* Model:

* Serial:

* Part Number:

SEARCH

**Can't Find Part or
Manual? Request Help
by Manufacturer,
Model & Description**

Parts Order Form

Please fill in the following information to help us find the right part for your machine.

| | |
|---------------|----------------------|
| Manufacturer: | <input type="text"/> |
| Model: | <input type="text"/> |
| Description: | <input type="text"/> |
| Part Number: | <input type="text"/> |
| Quantity: | <input type="text"/> |
| Notes: | <input type="text"/> |

Submit

Discount-Equipment.com is your online resource for quality parts & equipment.

Florida: **561-964-4949** Outside Florida TOLL FREE: **877-690-3101**

Need parts?

Click on this link: <http://www.discount-equipment.com/category/5443-parts/> and choose one of the options to help get the right parts and equipment you are looking for. Please have the machine model and serial number available in order to help us get you the correct parts. If you don't find the part on the website or on one of the online manuals, please fill out the request form and one of our experienced staff members will get back to you with a quote for the right part that your machine needs.

We sell worldwide for the brands: Genie, Terex, JLG, MultiQuip, Mikasa, Essick, Whiteman, Mayco, Toro Stone, Diamond Products, Generac Magnum, Airman, Haulotte, Barreto, Power Blanket, Nifty Lift, Atlas Copco, Chicago Pneumatic, Allmand, Miller Curber, Skyjack, Lull, Skytrak, Tsurumi, Husquvarna Target, Stow, Wacker, Sakai, Mi-T-M, Sullair, Basic, Dynapac, MBW, Weber, Bartell, Bennar Newman, Haulotte, Ditch Runner, Menegotti, Morrison, Contec, Buddy, Crown, Edco, Wyco, Bomag, Laymor, EZ Trench, Bil-Jax, F.S. Curtis, Gehl Pavers, Heli, Honda, ICS/PowerGrit, IHI, Partner, Imer, Clipper, MMD, Koshin, Rice, CH&E, General Equipment, Amida, Coleman, NAC, Gradall, Square Shooter, Kent, Stanley, Tamco, Toku, Hatz, Kohler, Robin, Wisconsin, Northrock, Oztec, Toker TK, Rol-Air, APT, Wylie, Ingersoll Rand / Doosan, Innovatech, Con X, Ammann, Mecalac, Makinex, Smith Surface Prep, Small Line, Wanco, Yanmar