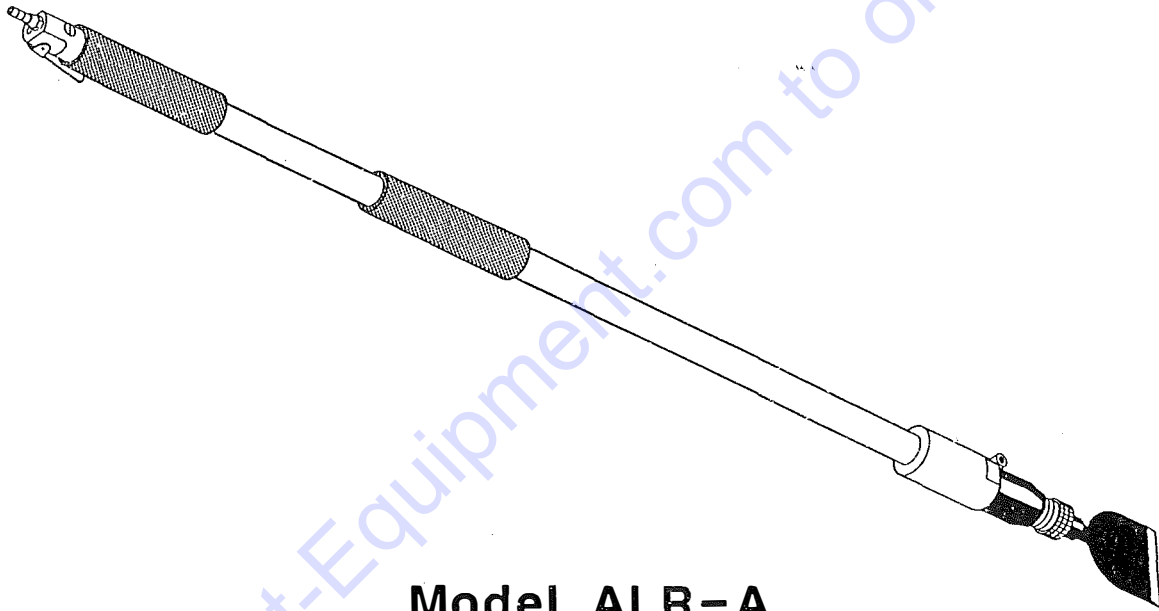




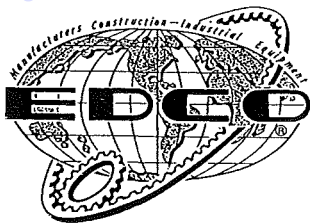
LONG REACH SCALER

LIGHT - WEIGHT

INSTRUCTIONS AND PARTS MANUAL



Model ALR-A
(ALUMINUM)



PARTS FINDER

**Search Website
by Part Number**



**Search Manual
Library For Parts
Manual & Lookup Part
Numbers – Purchase
or Request Quote**

Search Manuals

Enter your information to help us find the right parts manual for your machine.

* Brand:

* Model:

* Serial:

* Part Number:

SEARCH

**Can't Find Part or
Manual? Request Help
by Manufacturer,
Model & Description**

Parts Order Form

Please fill in the following information to help us find the right part for your machine.

Manufacturer:	<input type="text"/>
Model:	<input type="text"/>
Description:	<input type="text"/>
Part Number:	<input type="text"/>
Quantity:	<input type="text"/>
Notes:	<input type="text"/>

Discount-Equipment.com is your online resource for quality parts & equipment.

Florida: **561-964-4949** Outside Florida TOLL FREE: **877-690-3101**

Need parts?

Click on this link: <http://www.discount-equipment.com/category/5443-parts/> and choose one of the options to help get the right parts and equipment you are looking for. Please have the machine model and serial number available in order to help us get you the correct parts. If you don't find the part on the website or on one of the online manuals, please fill out the request form and one of our experienced staff members will get back to you with a quote for the right part that your machine needs.

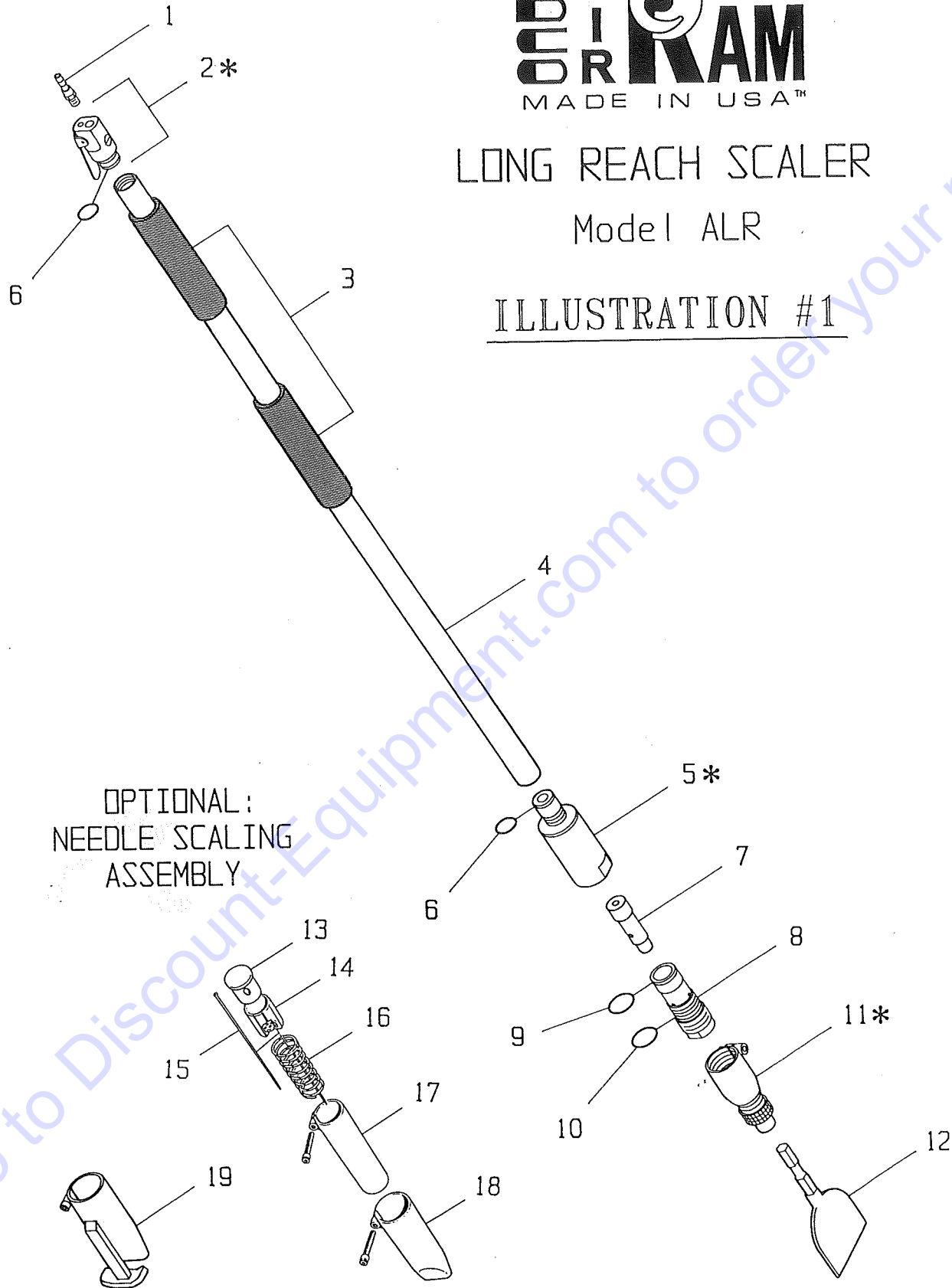
We sell worldwide for the brands: Genie, Terex, JLG, MultiQuip, Mikasa, Essick, Whiteman, Mayco, Toro Stone, Diamond Products, Generac Magnum, Airman, Haulotte, Barreto, Power Blanket, Nifty Lift, Atlas Copco, Chicago Pneumatic, Allmand, Miller Curber, Skyjack, Lull, Skytrak, Tsurumi, Husquvarna Target, Stow, Wacker, Sakai, Mi-T-M, Sullair, Basic, Dynapac, MBW, Weber, Bartell, Bennar Newman, Haulotte, Ditch Runner, Menegotti, Morrison, Contec, Buddy, Crown, Edco, Wyco, Bomag, Laymor, EZ Trench, Bil-Jax, F.S. Curtis, Gehl Pavers, Heli, Honda, ICS/PowerGrit, IHI, Partner, Imer, Clipper, MMD, Koshin, Rice, CH&E, General Equipment, Amida, Coleman, NAC, Gradall, Square Shooter, Kent, Stanley, Tamco, Toku, Hatz, Kohler, Robin, Wisconsin, Northrock, Oztec, Toker TK, Rol-Air, APT, Wylie, Ingersoll Rand / Doosan, Innovatech, Con X, Ammann, Mecalac, Makinex, Smith Surface Prep, Small Line, Wanco, Yanmar



LONG REACH SCALER

Model ALR

ILLUSTRATION #1



OPTIONAL:
NEEDLE SCALING
ASSEMBLY

* NOTE:
These items are assemblies. Refer to
Illustration #2, page 3, for breakdown.

PARTS LISTING - ILLUSTRATION #1

Item #	Part #	Description	Qty.
1.	C10523	Barb, Swivel 3/8Hose x 1/4MPT	1
2.	C10570A	Valve Body Assembly, Aluminum (See Illus. #2 for Breakdown)	1
3.	C10531	Grip, Foam 8"	2
4.		Casing, Alum. (Specify Size)	1
	C10532A	5 foot Model	
	C10533A	4 foot Model	
	C10534A	2 foot Model	
5.	C10535A	Cylinder Housing Assy., Alum. (See Illus. #2 for Breakdown)	1
6.	C10536	O-Ring 26mm x 2mm (See Illus. #2, Items "G" & "N")	2
7.	C10583	Piston } Should be replaced	1
8.	C10584	Cylinder } together as a set.	1
9.	C10511	O-Ring 34mm x 2mm	1
10.	C10512	O-Ring 37mm x 2mm	1
11.	C10514	Chisel Holder, 5/8" Hex Shank (See Illus. #2 for Breakdown)	1
12.	C10302	LR-4 Chisel, 4" Steel	1
		(Other Accessories Available)	
	C10537	Allen Key 1/4 in. (Not Shown)	1

OPTIONAL - NEEDLE SCALING ASSEMBLY (Part #C10307)

13.	C10516	Anvil	1
14.	C10517	Needle Holder for 3mm Needle	1
15.		Needle 3mm x 7" (28 per set)	28
	C10595	AN-FL Flat Tip (Standard)	
	C10596	AN-PT Pointed Tip (Optional)	
	C10597	AN-CP Chisel Tip (Optional)	
16.	C10518	Spring, Compression	1
17.	C10519	Intermediate Tube, Round Front W/ Socket Head Screw	1
18.	C10520	Front Tube, Straight W/ Socket Head Screw	1
19.	C10537	Allen Key 1/4 in. (Not Shown)	1

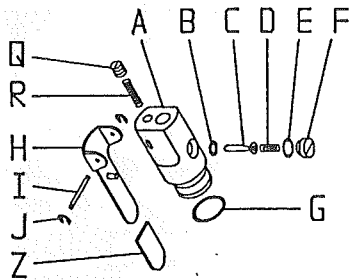
OPTIONAL - FRONT TUBE WITH FOOT FOR CRACK CHASING

19.	C10538	Front Tube, Crack Chaser W/ Socket Head Screw	1
-----	--------	--	---

ILLUSTRATION #2

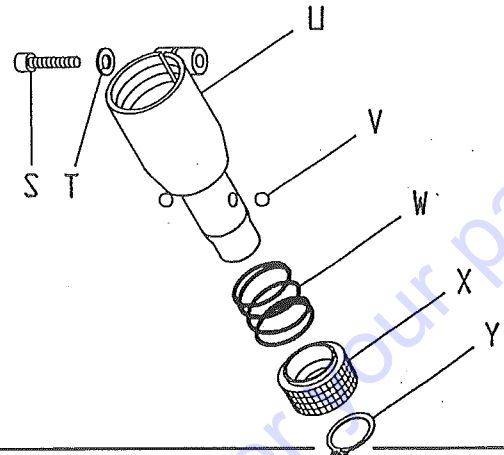
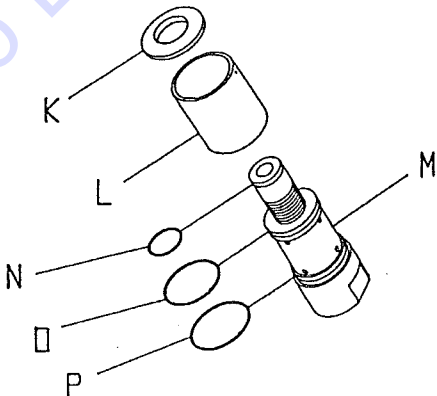
2 C10570A Valve Body Assembly

ITEM	PART #	DESCRIPTION	QTY
A	C10571A	Valve Body, Aluminum	1
B	C10540	O-Ring, Valve Stem #109	1
C	C10572	Valve Stem	1
D	C10542	Spring, Valve Stem	1
E	C10543	O-Ring, Stem Retainer #013	1
F	C10544	Valve Stem Retainer	1
G	C10536	O-Ring, Valve Body 26mm x 2mm	1
H	C10573	Valve Lever	1
I	C10574	Pin, Valve Lever 1/8 x 1 3/8	1
J	C10622	Retaining Ring, E-Clip 1/8"	2
Q	C10575	Retaining Cap, 3/8 - 24 x 3/8	1
R	C10576	Spring, Valve Lever	1
Z	C10569	Grip, Flat Red .75 x 1.5"L	1



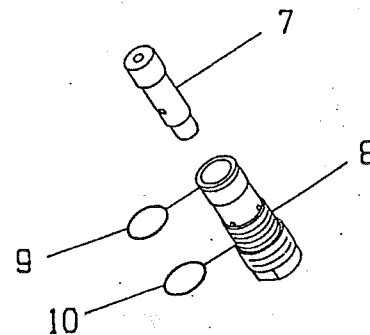
5 C10535A Cylinder Housing Assembly

ITEM	PART #	DESCRIPTION	QTY
K	C10545	Cylinder Housing Cap	1
L	C10546	Cylinder Housing Sleeve	1
M	C10547A	Cylinder Housing Main Body, Alum.	1
N	C10536	O-Ring 26mm x 2mm	1
O	C10548	O-Ring 46mm x 2mm	1
P	C10549	O-Ring 48mm x 2mm	1



11 C10514 Chisel Holder Assembly

ITEM	PART #	DESCRIPTION	QTY
S	C10577	Screw, Skt. Hd. 5/16 - 18 x 1 1/4	1
T	10801	Washer, Lock 5/16	1
U	C10578	Chuck Body	1
V	C10579	Ball, 5/16" Chrome	2
W	C10580	Spring, Comp. 1 1/2" OD x 1 1/4"L	1
X	C10581	Collar, Knurled Ball Locking	1
Y	C10582	Retaining Ring, Ext. 1 1/8"	1
	C10537	Allen Key 1/4 in. (Not Shown)	1



7, 8, 9 & 10 Piston and Cylinder Assembly

ITEM	PART #	DESCRIPTION	QTY	
7	C10583	Piston	} Should be replaced together as a set.	1
8	C10584	Cylinder		1
9	C10511	O-Ring 34mm x 2mm		1
10	C10512	O-Ring 37mm x 2mm		1

OPERATION AND MAINTENANCE INSTRUCTIONS

EDCO AIR-RAM LONG REACH SCALER

1. Be certain airhose is correct size for the tool - 90 p.s.i. (6.3 bar). Working pressure should always be kept at 80 psi and never above 100 psi. Check hose fittings.
2. Keep hose length limited to 30 feet (10 meters). Pressure drop is approximately 3 psi per 90 feet of 3/8" hose.
3. The use of a filter/lubricator is recommended. Otherwise lubricate the tool daily through the hose connector with four or five drops of light machine oil. After 100 hours of use, flush the tool thoroughly with kerosene. Oil tool immediately after flushing. When operating the tool in refrigerated rooms or during freezing weather, the use of a graphite/oil mixture for lubrication is recommended.
4. To install tools into chisel holder:
 - Pull back on the spring-loaded locking collar - hold until tool is firmly seated in the holder
 - Release collar to retain tool

To remove tool:

 - Pull back on locking collar and remove tool
5. Do not apply excessive pressure when operating the tool - let the scaler do the work. DO NOT use the tool as a pry bar.
6. The AIR-RAM Scaler is equipped with a safety release air valve to prevent accidental activation. To operate the valve, push the lever "H" back toward air inlet and depress. Releasing the lever will stop the air flow.
7. After releasing the air valve lever, the tool will continue to operate for up to 12 seconds. This is a normal result of stored pressure in the tool casing being released gradually.
8. Follow disassembly instructions in case of problems. The AIR-RAM is virtually maintenance free and if used properly, will provide long, trouble free service. Parts are available from your dealer or the EDCO factory.

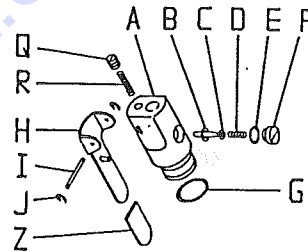
TO DISASSEMBLE EDCO AIR-RAM SCALER MODEL

ALR

NOTE: Items #2, #5, and #11 can be replaced as assemblies. All threaded parts are standard right-hand styles.

1. To disassemble tool: place Cylinder Housing (#5) in vice and clamp on flat ends.
2. To remove Chisel Holder Chuck (#11) - loosen hex screw and unscrew Chisel Holder from Cylinder (#8).
3. Cylinder (#8) may be unscrewed from Cylinder Housing (#5). Cylinder (#8) contains the Piston (#7). Piston is removed by gently tapping on the small end and lifting Piston up and out of Cylinder Housing.
4. Cylinder Housing (#5) is not an operating part and rarely needs to be removed. If an air leak is detected, the "O" rings (#6 and "N") should be replaced.
5. Casing (#4) if damaged, may be unscrewed from Cylinder Housing (#5) and Valve Assembly (#2). There are no moving parts in the Casing.
6. Valve Assembly (#2) is screwed into upper end of Casing (#4).

AIR VALVE BODY ASSEMBLY (#2)



To remove Internal Valve Parts, E - "O" Ring,
D - Compression Spring,
C - Valve Stem,
B - "O" Ring

remove Capping Screw (F). The Valve Stem (C) should be replaced if worn or loose in Valve Body (A).

The "O" Ring for the Valve Stem (B) may become unseated due to excess air pressure. Check this item if tool fails to stop running when valve handle is released.

The Valve Lever (H) is held in place by the Pin (I) and E-clips (J).

The "O" ring (G) must be in place on Valve Assembly (A) to prevent air leaks when assembly is screwed into Casing (#4).

NOTE: All "O" Rings should be inspected and replaced if air leakage or damage is detected.

To replace Rubber Hand Grips (#3) - remove Air Valve Assembly and slide grips to a comfortable position on Casing.

Lubricate all parts with light machine oil when reassembling the tool.

OPTIONAL NEEDLE SCALER OR CRACK CHASER

ASSEMBLY:

This assembly is threaded onto Cylinder (#8) in place of Chisel Holder Chuck (#1).

TO REPLACE WORN NEEDLES:

Loosen hex screw on Tube (#17)

Unscrew entire assembly from Cylinder (#8)

Be careful - needles are under spring pressure and Anvil (#13) may eject from Tube (#17)

Hold anvil in place when unscrewing assembly from tool. When assembly is unscrewed - spring tension will be released. Gently shake out Anvil (#13), Needles Holder (#14) and needles will follow. Spring (#16) should be left inside of Tube (#17).

Remove needles and replace. One needle per location hole in Needle Holder (#14). Insert needles into Tube (#17) as a group - be sure all needles fit inside Spring (#16).

Replace Holder (#14) in Tube, follow with Anvil (#13). Reassemble on tool, tighten hex screw on Tube (#17).

Extension tube adjustment: loosen hex screw on Tube (#18), allow about 1 inch of needle to protrude. Tighten Tube (#18).

NOTE: Needle Scaler Tube (#18) may be replaced with Crack Chaser Tube with foot (#19) for opening random cracks on concrete floor surfaces.

PARTS FINDER

**Search Website
by Part Number**



**Search Manual
Library For Parts
Manual & Lookup Part
Numbers – Purchase
or Request Quote**

Search Manuals

Enter your information to help us find the right parts manual for your machine.

* Brand:

* Model:

* Serial:

* Part Number:

SEARCH

**Can't Find Part or
Manual? Request Help
by Manufacturer,
Model & Description**

Parts Order Form

Please fill in the following information to help us find the right part for your machine.

Manufacturer:	<input type="text"/>
Model:	<input type="text"/>
Description:	<input type="text"/>
Part Number:	<input type="text"/>
Quantity:	<input type="text"/>
Notes:	<input type="text"/>

Submit

Discount-Equipment.com is your online resource for quality parts & equipment.

Florida: **561-964-4949** Outside Florida TOLL FREE: **877-690-3101**

Need parts?

Click on this link: <http://www.discount-equipment.com/category/5443-parts/> and choose one of the options to help get the right parts and equipment you are looking for. Please have the machine model and serial number available in order to help us get you the correct parts. If you don't find the part on the website or on one of the online manuals, please fill out the request form and one of our experienced staff members will get back to you with a quote for the right part that your machine needs.

We sell worldwide for the brands: Genie, Terex, JLG, MultiQuip, Mikasa, Essick, Whiteman, Mayco, Toro Stone, Diamond Products, Generac Magnum, Airman, Haulotte, Barreto, Power Blanket, Nifty Lift, Atlas Copco, Chicago Pneumatic, Allmand, Miller Curber, Skyjack, Lull, Skytrak, Tsurumi, Husquvarna Target, Stow, Wacker, Sakai, Mi-T-M, Sullair, Basic, Dynapac, MBW, Weber, Bartell, Bennar Newman, Haulotte, Ditch Runner, Menegotti, Morrison, Contec, Buddy, Crown, Edco, Wyco, Bomag, Laymor, EZ Trench, Bil-Jax, F.S. Curtis, Gehl Pavers, Heli, Honda, ICS/PowerGrit, IHI, Partner, Imer, Clipper, MMD, Koshin, Rice, CH&E, General Equipment, Amida, Coleman, NAC, Gradall, Square Shooter, Kent, Stanley, Tamco, Toku, Hatz, Kohler, Robin, Wisconsin, Northrock, Oztec, Toker TK, Rol-Air, APT, Wylie, Ingersoll Rand / Doosan, Innovatech, Con X, Ammann, Mecalac, Makinex, Smith Surface Prep, Small Line, Wanco, Yanmar