

# ELECTRIC POWER TROWEL

## PARTS LIST MANUAL



**24", 30", 36", and 46" Models**

**EDCO**

**Discount  
Equipment**

# PARTS FINDER

**Search Website  
by Part Number**



**Search Manual  
Library For Parts  
Manual & Lookup Part  
Numbers – Purchase  
or Request Quote**

**Search Manuals**

Enter your information to help us find the right parts manual for your machine.

\* Brand:

\* Model:

\* Serial:

\* Part Number:

SEARCH

**Can't Find Part or  
Manual? Request Help  
by Manufacturer,  
Model & Description**

**Parts Order Form**

Please fill in the following information to help us find the right part for your machine.

Manufacturer:	<input type="text"/>
Model:	<input type="text"/>
Description:	<input type="text"/>
Part Number:	<input type="text"/>
Quantity:	<input type="text"/>
Notes:	<input type="text"/>

SEARCH

Discount-Equipment.com is your online resource for quality parts & equipment.

Florida: **561-964-4949** Outside Florida TOLL FREE: **877-690-3101**

**Need parts?**

Click on this link: <http://www.discount-equipment.com/category/5443-parts/> and choose one of the options to help get the right parts and equipment you are looking for. Please have the machine model and serial number available in order to help us get you the correct parts. If you don't find the part on the website or on one of the online manuals, please fill out the request form and one of our experienced staff members will get back to you with a quote for the right part that your machine needs.

We sell worldwide for the brands: Genie, Terex, JLG, MultiQuip, Mikasa, Essick, Whiteman, Mayco, Toro Stone, Diamond Products, Generac Magnum, Airman, Haulotte, Barreto, Power Blanket, Nifty Lift, Atlas Copco, Chicago Pneumatic, Allmand, Miller Curber, Skyjack, Lull, Skytrak, Tsurumi, Husquvarna Target, Stow, Wacker, Sakai, Mi-T-M, Sullair, Basic, Dynapac, MBW, Weber, Bartell, Bennar Newman, Haulotte, Ditch Runner, Menegotti, Morrison, Contec, Buddy, Crown, Edco, Wyco, Bomag, Laymor, EZ Trench, Bil-Jax, F.S. Curtis, Gehl Pavers, Heli, Honda, ICS/PowerGrit, IHI, Partner, Imer, Clipper, MMD, Koshin, Rice, CH&E, General Equipment, Amida, Coleman, NAC, Gradall, Square Shooter, Kent, Stanley, Tamco, Toku, Hatz, Kohler, Robin, Wisconsin, Northrock, Oztec, Toker TK, Rol-Air, APT, Wylie, Ingersoll Rand / Doosan, Innovatech, Con X, Ammann, Mecalac, Makinex, Smith Surface Prep, Small Line, Wanco, Yanmar

READ AND UNDERSTAND THE OPERATORS INSTRUCTION MANUAL THOROUGHLY BEFORE ATTEMPTING TO OPERATE THIS EQUIPMENT. Death or serious injury could occur if this machine is used improperly.



## SAFETY MESSAGES



The safety instructions are preceded by a graphic alert message of DANGER, WARNING, or CAUTION.



Indicates an imminent hazard which, if not avoided, will result in death or serious injury.



Indicates an imminent hazard which, if not avoided, can result in death or serious injury.



Indicates hazards which, if not avoided, could result in serious injury and or damage to the equipment.

## GASOLINE

Powered Equipment



- Do not operate gasoline powered equipment without adequate ventilation. Carbon monoxide is an invisible, odorless gas that can kill.

## ELECTRICAL

Powered Equipment



- ELECTRICAL HAZARD** - Be sure equipment is properly grounded. Failure to comply could kill or result in serious injury.



The engine exhaust from this product contains chemicals known to the State of California to cause cancer, birth defects or other reproductive harm.

## GENERAL INSTRUCTIONS



- You must read and understand the operators instruction manual and all other manuals associated with this machine. For your safety and the safety of others around you, it is extremely important to fully understand how to operate this machine in the way it was intended. Different model machines or older/newer versions of the same model may have different parts and controls that you need to understand. If instructions are not readable or available DO NOT USE this machine and contact Discount-equipment for a replacement Manual.
- You must be able to physically handle the bulk weight and power of this machine. If not properly controlled this machine can cause death or serious injury.
- Do not operate this machine in an impaired mental state. You must be able to exercise good judgement and reactions to maintain a safe working environment.
- This is a "one person" machine which means only one operator can be operating the machine at any one time. For the safety of others, maintain a safe operating distance to other personnel. Your work area should be defined and appropriately marked so bystanders and coworkers do not stand or walk near this machine and end up seriously injured by flying debris or exposing them to harmful noise or dust.
- This equipment is for Commercial use. Although this is a "one person" machine your work team should understand how to shut this machine off and quickly get medical help if an accident strikes the operator.
- Keep all guards in place during operation. The guards are to provide protection from inadvertent contact with dangerous moving parts, pinch points, or hot surfaces.
- Wear appropriate Personal Protective Equipment (PPE) including safety glasses, safety boots, work gloves, respiratory protection, hearing protection, and head protection. Do not wear loose clothing that can get tangled in moving parts. Failure to do so could result in dismemberment or death. **Wear an approved respirator when removing hazardous materials or when grinding/cutting dry materials. Some dust particles such as concrete dust can contain silicate particles which can cause silicosis (a very serious lung disease). Contact NIOSH or OSHA for further details. When wet grinding/cutting, avoid contact with the concrete/asphalt slurry which can cause serious skin irritations.**
- You must maintain this machine per the maintenance schedule in the operator manual. Remember before adjusting, servicing, or fueling this machine, disconnect the source of power to the machine by disconnecting the spark plug (Gas models), or by unplugging the electrical power cord (electric models) or air hose (Pneumatic models) AT THE MACHINE so you can assure yourself it remains unplugged while you are working on it. Do not modify this machine. Use only genuine EDCO parts and accessories. Repairs and service should be performed by approved EDCO dealers or authorized technicians.
- You should look carefully around the area before you begin work so you can identify potential hazards such as deck inserts, pipes, columns, openings, electrical cords or outlets, or any other objects protruding from the slab surface.
- This machine has no brain so you must use your own. There is no substitute for safety. The safety decals on the machine are to serve as a reminder for information you must already know before you begin using this machine. Take a moment to reread the safety decals each time you use the machine. If your machine is missing any decals, contact Discount-equipment for a replacement.

# PARTS LIST MANUAL

## ELECTRIC POWER TROWEL

Section	Page Number
Safety Messages / General Instructions . . . . .	2
How To Order Replacement Parts . . . . .	3
Illustration 1: Handle Bar Assembly Grouping (Standard) . . . . .	4,5
Illustration 2: Optional Lev-I-it System Grouping . . . . .	6,7
Illustration 3: Frame Deck W/ Guard Ring & Spider Subassembly Grouping . . . . .	8,9
Illustration 4: Spider Subassembly & Blade Grouping . . . . .	10
Illustration 5: Optional 36" Float Pan . . . . .	11
Power Trowel Blade Chart . . . . .	11
Illustration 6: 1.5 & 2HP Electric Motor Grouping . . . . .	12,13
Illustration 7: 3HP Electric Motor Grouping . . . . .	14,15
Illustration 8: 20:1 Ratio Transmission Assembly Grouping . . . . .	16
Illustration 9: 40:1 Ratio Transmission Assembly Grouping . . . . .	17
Illustration 10: Optional TAT II "Tote-a-Trowel" . . . . .	18
Illustration 11: Optional 110 Volt Lamp Kit Assembly . . . . .	19
Limited Equipment Warranty . . . . .	20 (back cover)

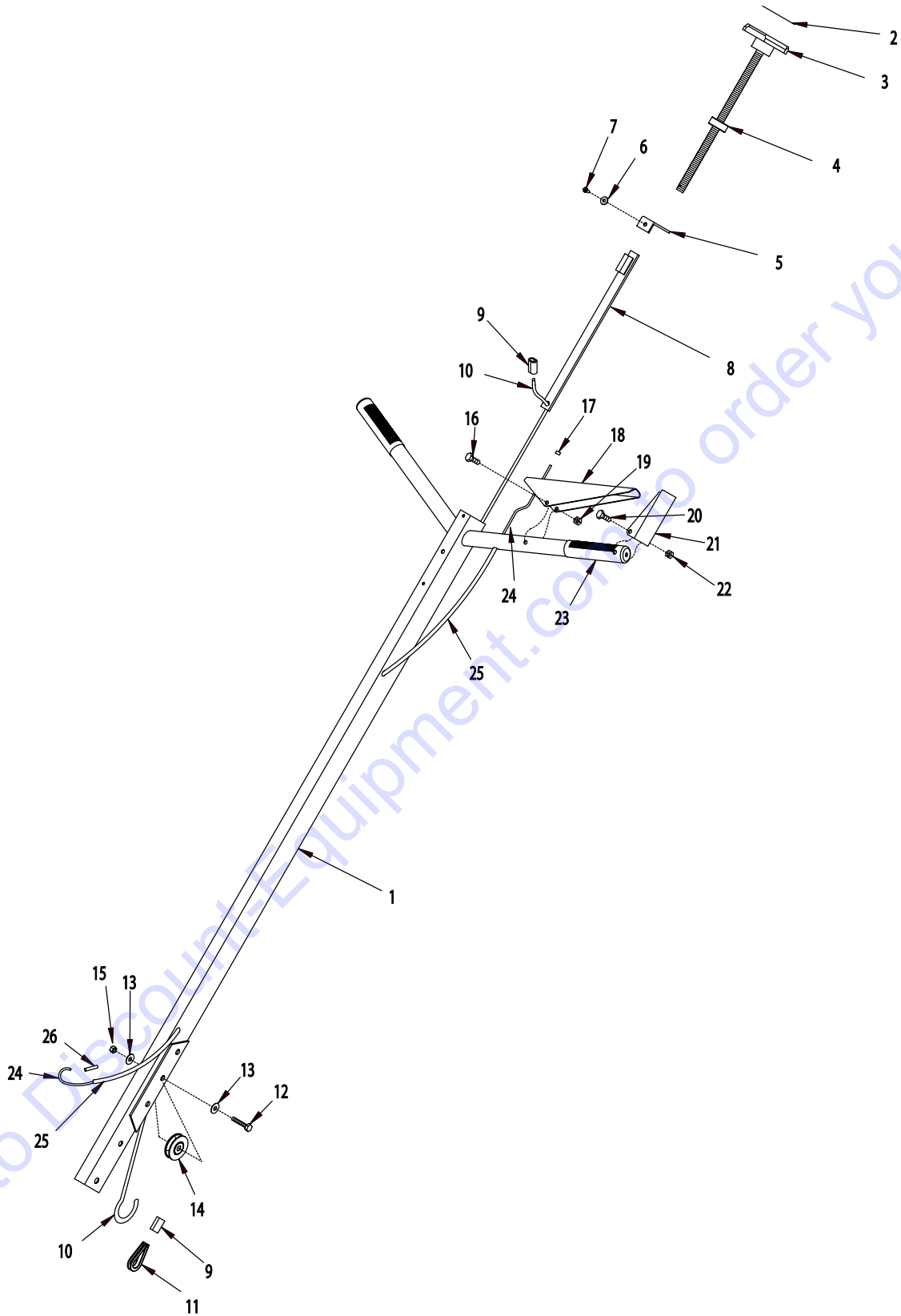
### ELECTRIC POWER TROWELS

*PART NO.	MODEL	SIZE	RPM	ELECTRIC MOTOR OPTION
84600	T244-1.5B	24"	100	BALDOR 1.5HP-1 PHASE-60HZ, 115/230V, 14/7 FLA
C86400	T244RS-1.5B	24"	50	
80400	T304-1.5B	30"	100	
C85100	T304RS-1.5B	30"	50	
80800	T364-1.5B	36"	100	LEESON 2HP-1 PHASE-60HZ, 115/230V, 18.8/9.4 FLA
C85200	T364RS-1.5B	36"	50	
81300	T364-2L	36"	100	BALDOR 3HP-1 PHASE-60HZ, 230V, 14.5 FLA
C86200	T364RS-2L	36"	50	
81200	T464-3B	46"	100	
C85300	T464RS-3B	46"	50	

\*ADDAN "L" SUFFIX TO ANY PART NO. LISTED FOR POWER TROWELS WITH THE LEV-L-IT SYSTEM. (SEE PAGES 6 & 7)

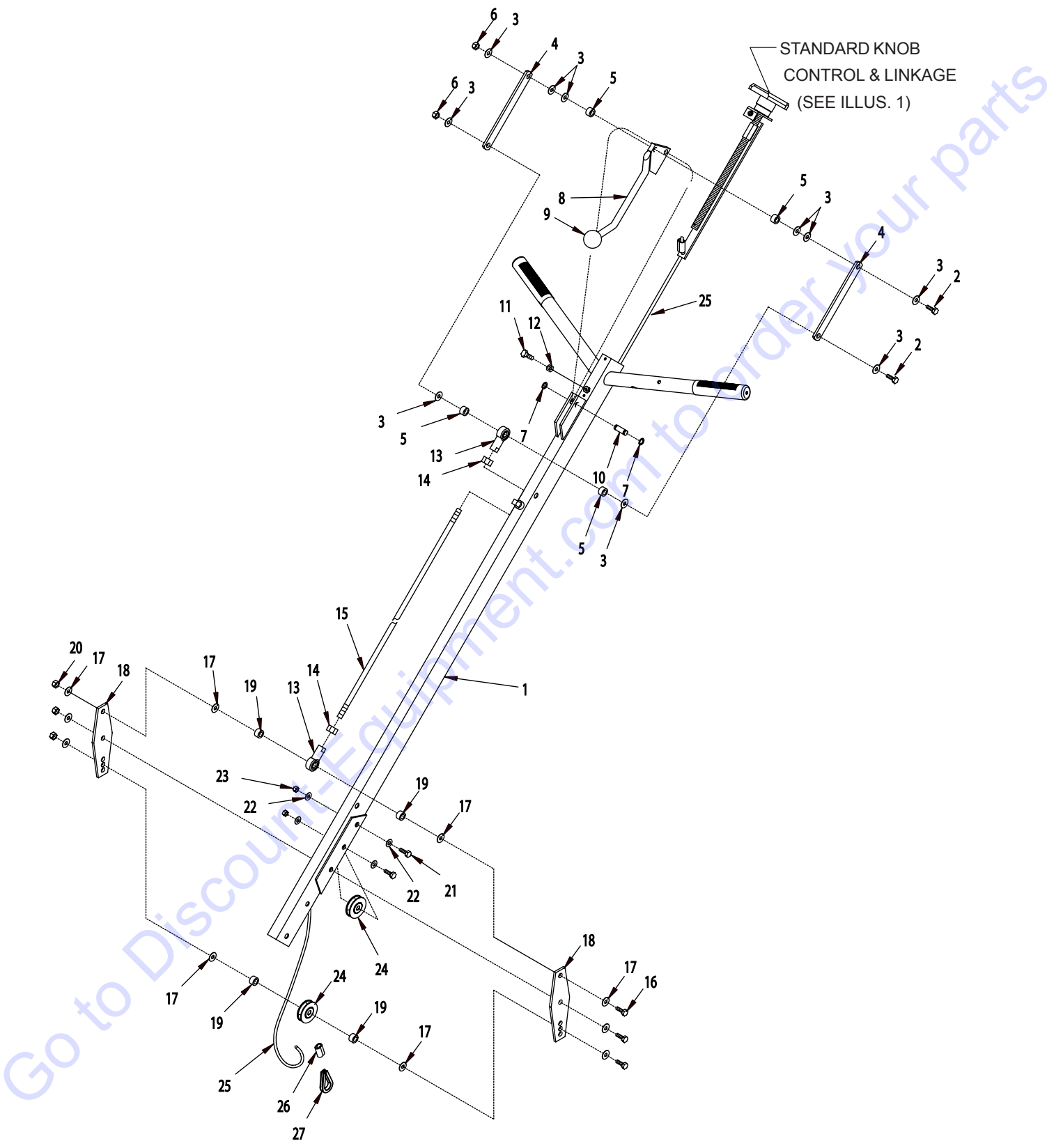
ILLUSTRATION 1 : HANDLE BAR ASSEMBLY (STANDARD)

PART # 3668E



PARTS LISTING - ILLUSTRATION 1 : HANDLE BAR ASSEMBLY (STANDARD)			
ITEM#	PART#	DESCRIPTION	QTY.
1	3628	HANDLE BAR	1
2	3661	DECAL, BLADE ANGLE-FLAT/TILT	1
3	3614	KNOB CONTROL w/ 1/2-13x12" ROD	1
4	3642	BEARING, THRUST BALL 1/2"ID x 1"OD x 3/8"THK	1
5	3616	HANDLE CAP	1
6	10831	WASHER, LOCK, INT. TOOTH #10	1
7	10877	SCREW, CAP STSHW 10-24x1/2	1
8	3617	LINKAGE, ADJUSTING	1
9	3618	SLEEVE, NICROPRESS DOUBLE 3/16"	2
10	3619	CABLE, CONTROL 3/16x40-1/2"	1
11	4610	CABLE, THIMBLE 3/16"	1
12	10029	SCREW, CAP 3/8-24x1-3/4	1
13	10025	WASHER, FLAT 3/8	2
14	3621	PULLEY BEARING 1-3/4" DIA.x3/8" BORE	1
15	10004	NUT, LOCK 3/8-24	1
16	10315	SCREW, CAP 1/4-20 x1-1/2	1
17	4611	SLEEVE, NICROPRESS SINGLE 3/32"	1
18	3647	LEVER, CLUTCH, TROWEL	1
19	10015	NUT, LOCK 1/4-20	1
20	10314	SCREW, CAP 1/4-20x1-3/4	1
21	3699	LEVER LOCK, CLUTCH	1
22	10015	NUT, LOCK 1/4-20	1
23	79022	GRIP, HAND 1" MODEL RG	2
24	3648	CABLE, CLUTCH 3/32x70"L	1
25	3649	CABLE HOUSING, CLUTCH 57"POLY	1
26	4612	CABLE RETAINER TUBE, CLUTCH	1

ILLUSTRATION 2 : OPTIONAL LEV-L-IT SYSTEM GROUPING

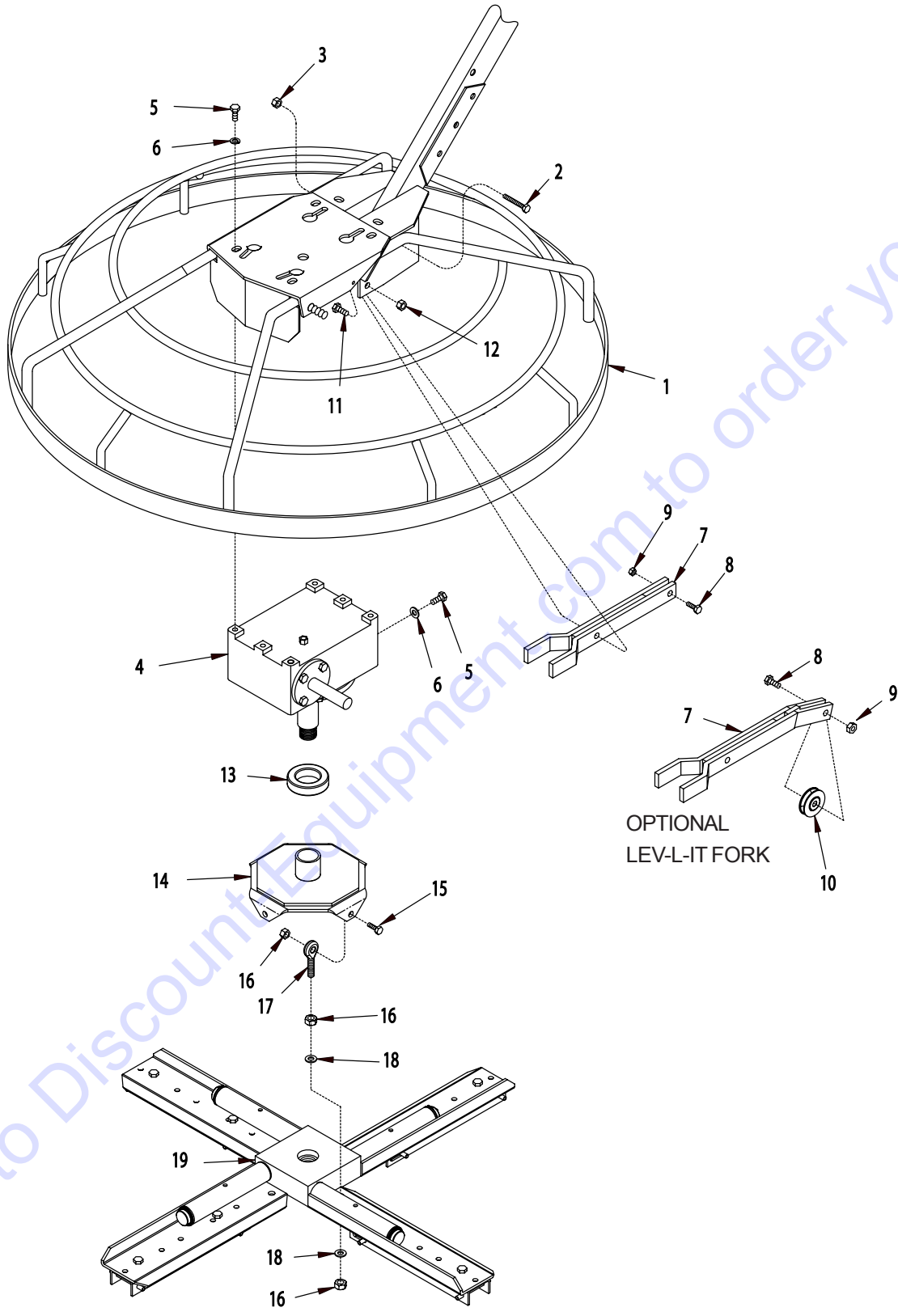




PARTS LISTING - ILLUSTRATION 2 : OPTIONAL LEV-L-IT SYSTEM GROUPING			
ITEM#	PART#	DESCRIPTION	QTY.
1	C84010	HANDLE FOR LEV-L-IT SYSTEM	1
2	10336	SCREW, CAP 3/8-24 x 2-1/4	2
3	10025	WASHER, FLAT 3/8	10
4	C84014	LINKAGE, CONNECTING	2
5	10011	SPACER, STEEL 5/8"OD x 3/8"ID x 3/8"THK	4
6	10004	NUT, LOCK 3/8-24	2
7	C10618	RETAINING RING, E-CLIP 3/8"	2
8	C84012	LEVER, "LEV-L-IT" CONTROL	1
9	14023	KNOB, BALL 1-3/8 W/ 1/2-13THD, BLK.	1
10	C84013	PIN, PIVOT 3/8 x 1-1/8	1
11	10834	SCREW, CAP 1/4-20 x 1/2	1
12	10013	NUT 1/4-20	1
13	10919	ROD END, FEMALE 3/8-24 R.H. THREAD	2
14	10014	NUT 3/8-24	2
15	C84015	LINKAGE, ROD 3/8 x 32"L	1
16	10336	SCREW, CAP 3/8-24 x 2-1/4	3
17	10025	WASHER, FLAT 3/8	10
18	C84016	BRACKET, PITCH	2
19	10011	SPACER, STEEL 5/8"OD x 3/8"ID x 3/8"THK	4
20	10004	NUT, LOCK 3/8-24	3
21	10029	SCREW, CAP 3/8-24 x 1-3/4	2
22	10025	WASHER, FLAT 3/8	4
23	10004	NUT, LOCK 3/8-24	2
24	3621	PULLEY BEARING 1-3/4DIA. x 3/8BORE	2
25	C84011	CABLE, CONTROL 3/16 x 51"	1
26	3618	SLEEVE, NICROPRESS DOUBLE 3/16"	1
27	4610	CABLE, THIMBLE 3/16"	1



**ILLUSTRATION 3 : FRAME DECK w/ GUARD RING  
& SPIDER SUBASSEMBLY GROUPING**

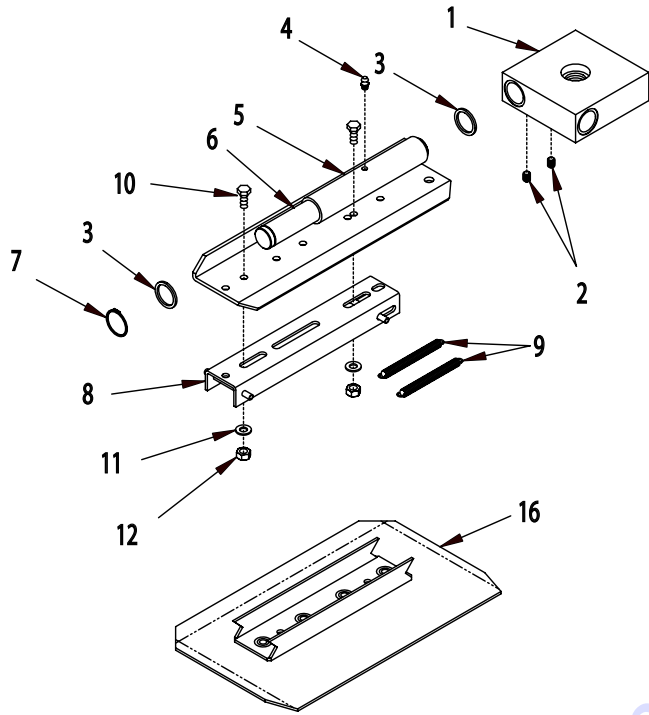


Go to DiscountEquipment.com to order your parts

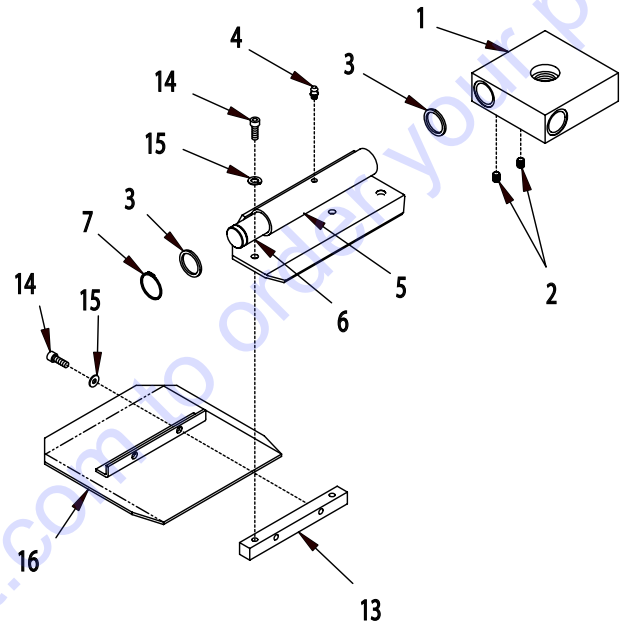
PARTS LISTING - ILLUSTRATION 3 : FRAME DECK w/ GUARD RING & SPIDER SUBASSEMBLY GROUPING			
ITEM#	PART#	DESCRIPTION	QTY.
1		FRAME & GUARD RING	1
	2401	24" TROWEL	
	3662	30" TROWEL	
	3644	36" TROWEL	
	4601	46" TROWEL	
2	10029	SCREW, CAP 3/8-24x1-3/4	2
3	10004	NUT, LOCK 3/8-24	2
4		TRANSMISSION, TROWEL	1
	3664	20:1 RATIO, STD. SPEED (SEE ILLUS. 8 FOR BREAKDOWN)	
	3664-RS	40:1 RATIO, REDUCED SPEED (SEE ILLUS. 9 FOR BREAKDOWN)	
5	10907	SCREW, CAP 3/8-16x3/4	6
6	10811	WASHER, LOCK 3/8	6
7		FORK, ADJUSTING	1
	3625	STANDARD	
	C84017	OPTIONAL FOR LEV-L-IT SYSTEM ONLY	
8	10816	SCREW, CAP 3/8-24x1-1/2	1
9	10004	NUT, LOCK 3/8-24	1
10	3621	PULLEY BEARING 1-3/4DIA.x3/8BORE	1
11	10029	SCREW, CAP 3/8-24x1-3/4	1
12	10004	NUT, LOCK 3/8-24	1
13	3609	BEARING, THRUST BALL 1-1/2"ID x 2-9/16"OD x 5/8"THK	1
14		PLATE, PITCHADJUSTMENT	1
	3626	24, 30, & 36" TROWELS	
	4603	46" TROWELS	
15		SCREW, CAP	4
	10021	3/8-24x1	
	10322	1/2-20x2 (46" TROWELS ONLY)	
16		NUT, LOCK	12
	10004	3/8-24	
	10205	1/2-20 (46" TROWELS ONLY)	
17		ROD END, MALE	4
	3605	3/8-24	
	4805	1/2-20 (46" TROWELS ONLY)	
18		WASHER, FLAT	8
	10025	3/8	
	10312	1/2 (46" TROWELS ONLY)	
19		SPIDER SUBASSEMBLY (SEE ILLUS. 4 FOR BREAKDOWN)	1
	2410	24" TROWEL	
	3620	30" TROWEL	
	36006	36" TROWEL	
	3680	46" TROWEL	

**ILLUSTRATION 4 : SPIDER SUBASSEMBLY & BLADE GROUPING**

**30"- 46" POWER TROWELS**



**24" POWER TROWEL**



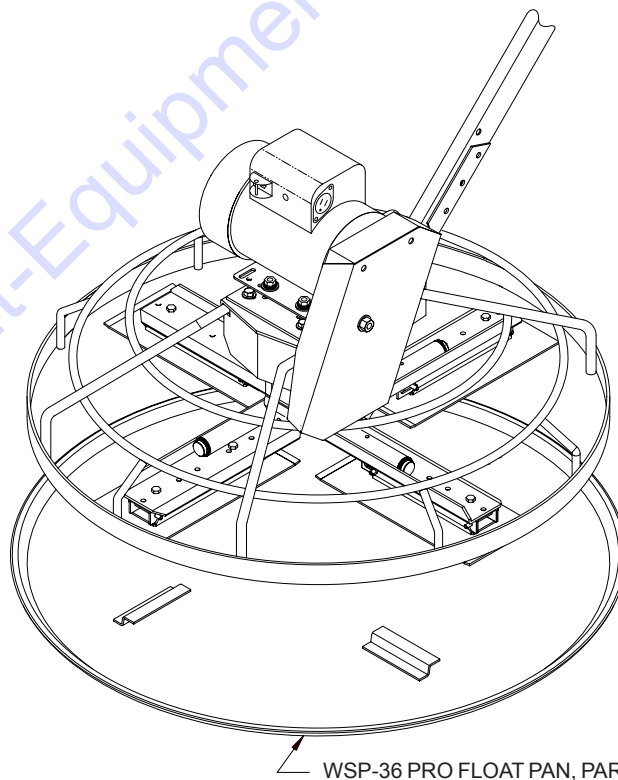
**SELECT HERE FOR PARTS BREAKDOWN FOR BOLT-ON STYLE TROWEL BLADES & ADAPTERS**

ITEM#	PART#	DESCRIPTION	QTY.	ITEM#	PART#	DESCRIPTION	QTY.
1	3637	HUB, 4-BLADE	1	9		SPRING, EXT. (REPLACEMENT ONLY) 2 PER ADAPTER	
2	10052	SCREW, SET 5/16-18x3/8	8	3636		6"L ("A" ADAPTER)	
3	3629	SPACER, COPPER THRUST 1-1/4"ODx1-1/64"IDx3/32"THK.	8	4605		11-1/2"L ("B" ADAPTER)	
4	10808	FITTING, GREASE 1/4-28 STRAIGHT	4	10	10053	SCREW, CAP 5/16-18x3/4	8
5		ARM, BLADE	4	11	10213	WASHER, FLAT 5/16	8
	2402	24" TROWEL		12	10807	NUT, LOCK 5/16-18	8
	3666	30" TROWEL		13	2406	BAR, BLADE MOUNTING	4
	36007	36" TROWEL		14	11639	SCREW, SKT. HD. CAP 5/16-18x5/8	16
	4606	46" TROWEL		15	10801	WASHER, LOCK 5/16	16
6		SHAFT, BLADE ARM	4	*16		COMBINATION TROWEL BLADE (SET OF 4)	1
	3635	24, 30, 36" TROWEL (9-11/16"L)		40470		C-4, 24" TROWEL	SET
	4604	46" TROWEL (13-15/16"L)		40270		C-2, 30" TROWEL	
7	10906	RETAINING RING, EXT. 1"	4	40040		C-1, 36" TROWEL	
8		ADAPTER	4	40070		C-3, 46" TROWEL	
	40197	"A", 30 & 36" TROWEL		*NOTE: COMBINATION BLADES ARE NOT INCLUDED WITH A NEW TROWEL. SEE BLADE CHART FOR A LIST OF ALL BLADES			
	40237	"B", 46" TROWEL					



POWER TROWEL BLADE CHART				
ITEM	PART#	DESCRIPTION	SIZE	TYPE
COMBINATION BLADE				
C-4	40470	24" TROWEL	8"x8"	BOLT-ON
C-2	40270	30" TROWEL	8"x11"	QUICK CHANGE
C-1	40040	36" TROWEL	8"x14"	QUICK CHANGE
C-3	40070	46" TROWEL	8"x18"	QUICK CHANGE
FLOAT BLADE				
M-4	40490	24" TROWEL	9"x8"	BOLT-ON
M-2	40290	30" TROWEL	9"x11"	QUICK CHANGE
M-1	40060	36" TROWEL	9"x14"	QUICK CHANGE
M-3	40090	46" TROWEL	9"x18"	QUICK CHANGE
FINISH BLADE				
-----		N/A FOR 24" TROWEL		
F-2	40280	30" TROWEL	6"x11"	QUICK CHANGE
F-1	40050	36" TROWEL	6"x14"	QUICK CHANGE
F-3	40080	46" TROWEL	6"x18"	QUICK CHANGE

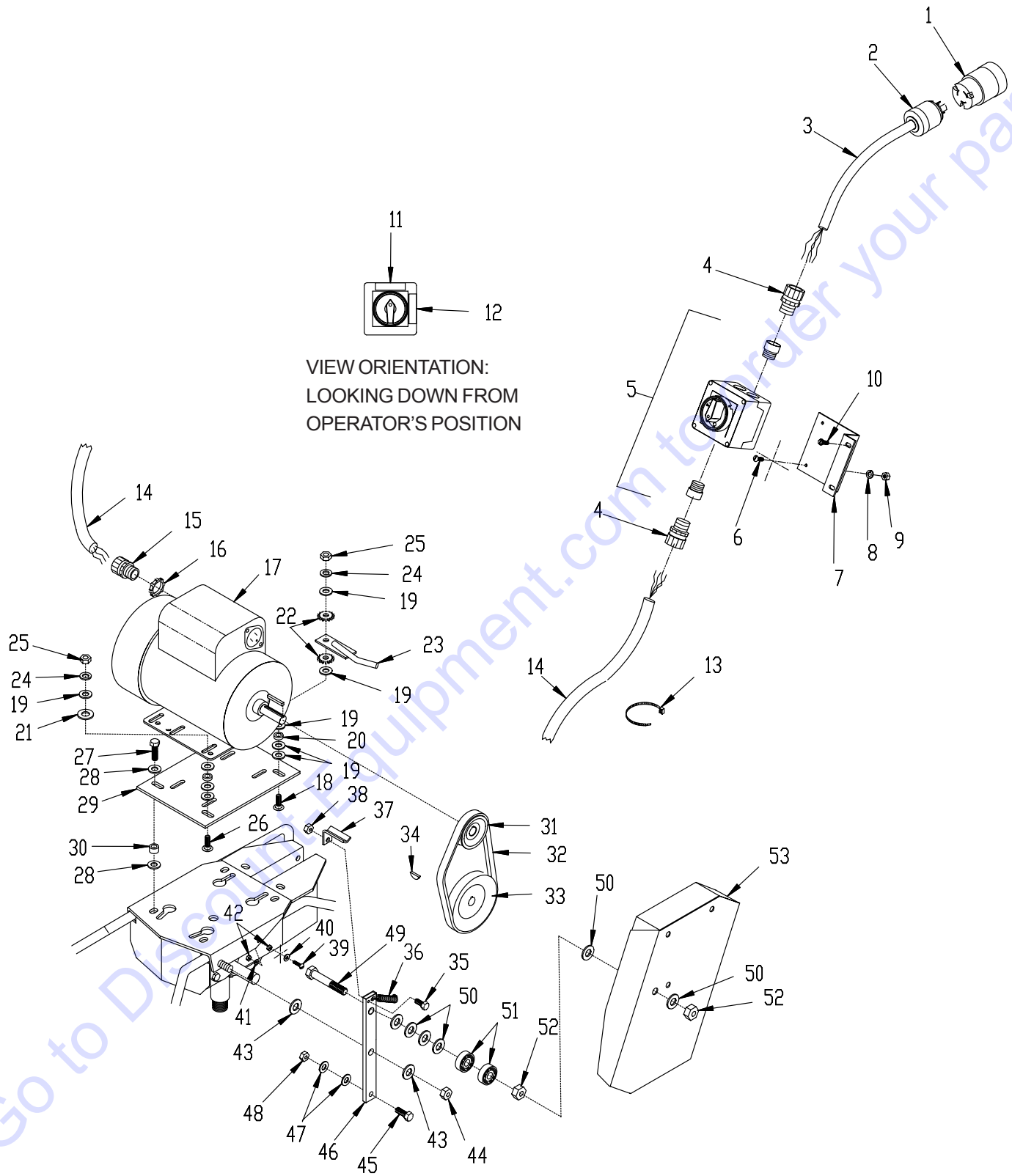
**ILLUSTRATION 5 : OPTIONAL 36" FLOAT PAN**



NOTE:  
 FLOAT PAN MUST BE  
 USED WITH F-1 FINISH  
 BLADES, PART NO. 40050

WSP-36 PRO FLOAT PAN, PART NO. 40710

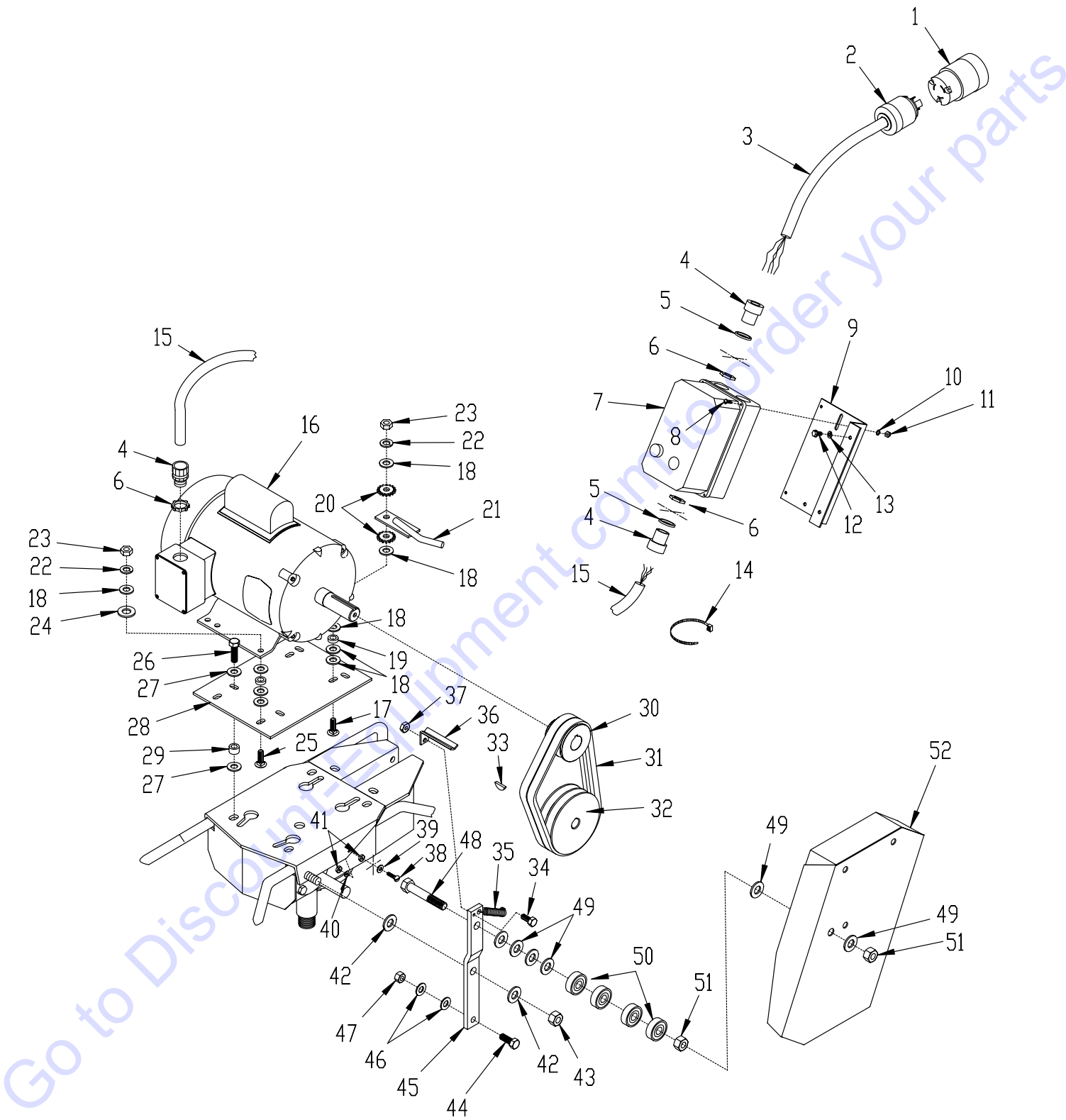
ILLUSTRATION 6 : 1.5&2 HP ELECTRIC MOTOR GROUPING



**PARTS LISTING : ILLUSTRATION 6 : 1.5&2 HP ELECTRIC MOTOR GROUPING**

ITEM#	PART#	DESCRIPTION	QTY.	ITEM#	PART#	DESCRIPTION	QTY.
1	40041	CONNECTOR, LOCKING 20A/125V	1	26	10820	BOLT, CARRIAGE 5/16-18x1-1/4 F.T.	3
2	40042	PLUG, LOCKING 20A/125V	1	27	10333	SCREW, CAP 3/8-16 x 1-1/4	4
3	C84018	WIRE HARNESS 12/3x24"	1	28	10025	WASHER, FLAT 3/8 SAE	8
4	41130	STRAIN RELIEF 1/2NPT x .550-.650"	2	29	36017	MOUNT, ELECTRIC MOTOR	1
5	77043	SWITCH, ROTARY CAM ON/OFF (INCLUDES (2) 1/2" NPT ADAPTERS)	1	30	10011	SPACER, STEEL 5/8OD x 3/8ID x 3/8T	4
6	11663	SCREW, MACHINE 8-32 x 1/2	4	31	3653	SHEAVE 3"OD x 1GR.B x 3/4"BORE	1
7	77042	BRACKET, SWITCH BOX	1	32	10051	BELT 5L-270	1
8	10461	WASHER, LOCK, INT. TOOTH #8	4	33	3654	SHEAVE 5"OD x 1GR.B x 3/4"BORE	1
9	10462	NUT 8-32	4	34	3685	KEY, WOODRUFF 3/16x 1 (#608)	1
10	10846	SCREW, CAP STSHW 1/4-20x1/2	2	35	10053	SCREW, CAP 5/16-18x3/4	1
11	91173	DECAL, OFF (HORZ.)	1	36	3658	SPRING, IDLER RETURN	1
12	91174	DECAL, ON (VERT.)	1	37	3656	BRACKET, BELT STOP 1-3/4"	1
13	10982	TIE, CABLE, BLACK NYLON 11-1/4"	1	38	10807	NUT, LOCK 5/16-18	1
14	C84030	WIRE HARNESS 12/3x65"	1	39	10833	SCREW, MACHINE 10-32x3/4	1
15	10959	STRAIN RELIEF 3/4 NPT X .550-.650"	1	40	10850	WASHER, FLAT #10 SAE	1
16	10740	CONDUIT LOCK NUT 3/4 NP	1	41	10831	WASHER, LOCK, INT. TOOTH #10	1
17		MOTOR	1	42	10832	NUT 10-32	2
	14004	BALDOR 1.5HP-1PH 60HZ 3450RPM		43	10312	WASHER, FLAT 1/2 SAE	2
	16007	LEESON 2HP-1PH-60HZ-3450RPM		44	10205	NUT, LOCK 1/2-20	1
18	10817	BOLT, CARRIAGE 5/16-18x1-1/2 F.T.	1	45	3646	SCREW, CABLE ANCHOR 3/8-24x1	1
19	10213	WASHER, FLAT 5/16 SAE	17	46	3645	ARM, CLUTCH, 9" STRAIGHT	1
20	10113	SPACER, STEEL 9/16ODx3/8IDx7/32	4	47	10025	WASHER, FLAT 3/8 SAE	2
21	10025	WASHER, FLAT 3/8 SAE	3	48	10004	NUT, LOCK 3/8-24	1
22	10436	WASHER, LOCK, EXT. TOOTH 5/16"	2	49	10202	SCREW, CAP 1/2-20x3	1
23	3624	BRACKET, BELT STOP	1	50	10312	WASHER, FLAT 1/2 SAE	6
24	10801	WASHER, LOCK 5/16	4	51	3659	BEARING, RADIAL BALL 1/2x1-3/8x7/16	2
25	10054	NUT 5/16-18	4	52	10205	NUT, LOCK 1/2-20	2
				53	3651	COVER, BELT	1

ILLUSTRATION 7 : 3 HP ELECTRIC MOTOR GROUPING

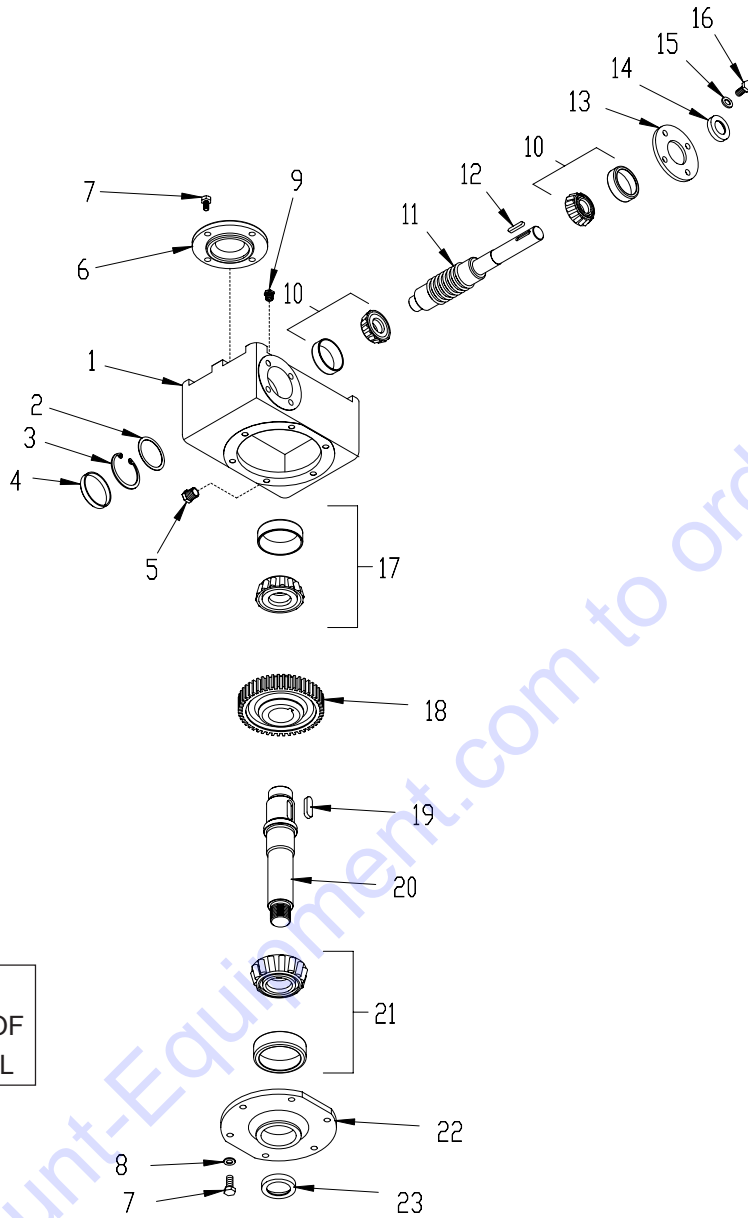




## PARTS LISTING : ILLUSTRATION 7 : 3 HP ELECTRIC MOTOR GROUPING

ITEM#	PART#	DESCRIPTION	QTY.	ITEM#	PART#	DESCRIPTION	QTY.
1	40041	CONNECTOR, LOCKING 20A/125V	1	27	10025	WASHER, FLAT 3/8 SAE	8
2	40042	PLUG, LOCKING 20A/125V	1	28	36058	MOUNT PLATE, 3 HP MOTOR	1
3	C84018	WIRE HARNESS 12/3x24"	1	29	10011	SPACER, STEEL 5/8OD x 3/8ID x 3/8T	4
4	10605	STRAIN RELIEF 3/4NPT x .650-.750"	2	30	79023	SHEAVE 3"OD x 2GR.B x 1-1/8"BORE	1
5	77081	WASHER, FLAT 1-9/16 x 1-1/16 x .06	2	31	10234	BELT 5L-290	2
6	10740	CONDUIT LOCK NUT 3/4 NP	2	32	77058	SHEAVE 5"OD x 2GR.B x 3/4"BORE	1
7	16405	STARTER 11-M1-BRF-P23-23-23060	1	33	3685	KEY, WOODRUFF 3/16x1 (#608)	1
8	10362	SCREW, MACHINE 8-32 x 3/4	4	34	10053	SCREW, CAP 5/16-18x3/4	1
9	86027	MOUNTING BRKT., LOVATO STARTER	1	35	3658	SPRING, IDLER RETURN	1
10	10461	WASHER, LOCK, INT. TOOTH #8	4	36	3652	BRACKET, BELT STOP 3"	1
11	10462	NUT 8-32	4	37	10807	NUT, LOCK 5/16-18	1
12	10846	SCREW, CAP STSHW 1/4-20 x 1/2	2	38	10833	SCREW, MACHINE 10-32x3/4	1
13	10038	WASHER, LOCK 1/4	2	39	10850	WASHER, FLAT #10 SAE	1
14	10982	TIE, CABLE, BLACK NYLON 11-1/4"	1	40	10831	WASHER, LOCK, INT. TOOTH #10	1
15	C84030	WIRE HARNESS 12/3x65"	1	41	10832	NUT 10-32	2
16	81014	MOTOR, BALDOR 3HP-1PH-60HZ-3450RPM	1	42	10312	WASHER, FLAT 1/2 SAE	2
17	10817	BOLT, CARRIAGE 5/16-18 x 1-1/2 F.T.	1	43	10205	NUT, LOCK 1/2-20	1
18	10213	WASHER, FLAT 5/16 SAE	17	44	3646	SCREW, CABLE ANCHOR 3/8-24x1	1
19	10113	SPACER, STEEL 9/16OD x 3/8ID x 7/32	4	45	3645B	ARM, CLUTCH, 9" BENT	1
20	10436	WASHER, LOCK, EXT. TOOTH 5/16"	2	46	10025	WASHER, FLAT 3/8 SAE	2
21	3624	BRACKET, BELT STOP	1	47	10004	NUT, LOCK 3/8-24	1
22	10801	WASHER, LOCK 5/16	4	48	10202	SCREW, CAP 1/2-20x3	1
23	10054	NUT 5/16-18	4	49	10312	WASHER, FLAT 1/2 SAE	6
24	10025	WASHER, FLAT 3/8	3	50	3659	BEARING, RADIAL BALL 1/2x1-3/8x7/16	4
25	10820	BOLT, CARRIAGE 5/16-18x1-1/4 F.T.	3	51	10205	NUT, LOCK 1/2-20	2
26	10333	SCREW, CAP 3/8-16x1-1/4	4	52	4651	COVER, BELT	1

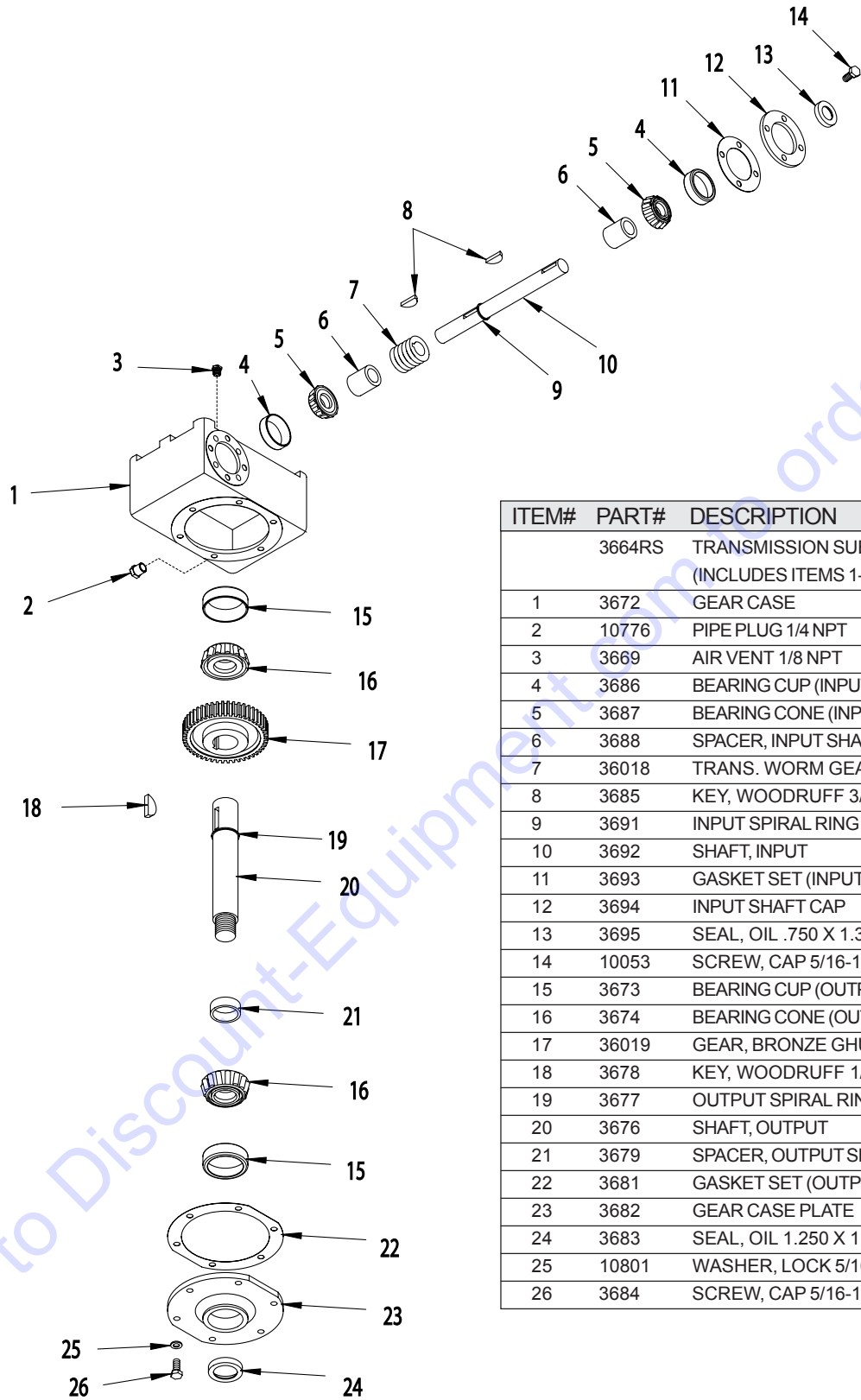
**ILLUSTRATION 8 : 20:1 RATIO TRANSMISSION ASSEMBLY  
FOR STANDARD SPEED TROWELS, PART# 3664**



**NOTE:**  
USES 16 OUNCES OF  
MOBIL 634 GEAR OIL

ITEM#	PART#	DESCRIPTION	QTY.	ITEM#	PART#	DESCRIPTION	QTY.
1	36101	TRANS. GEAR CASE	1	12	36108	TRANS. INPUT KEY 3/16SQ x 1	1
2	36111	TRANS. PLASTIC SHIM (USE AS REQ'D.)	-	13	36104	TRANS. INPUT FLANGE	1
3	36112	RETAINING RING, INT. 47MM	1	14	36110	TRANS. OIL SEAL, INPUT 20 x 35 x 7	1
4	36113	TRANS. BLANKING CAP	1	15	10801	WASHER, LOCK 5/16	4
5	36105	TRANS. PIPE PLUG 1/4NPT	1	16	10053	SCREW, CAP 5/16-18x3/4	4
6	36102	TRANS. GEAR CASE TOP COVER	1	17	36114	BEARING, TAPERED ROLLER 30206A	1
7	10806	SCREW, CAP 5/16-18 x1	10	18	36115	TRANS. BRONZE WORM WHEEL 20:1	1
8	10801	WASHER, LOCK 5/16	6	19	36116	TRANS. WHEEL KEY 10MM x 30MM	1
9	36106	TRANS. AIR VENT 1/4NPT	1	20	36117	TRANS. OUTPUT SHAFT	1
10	36109	BEARING, TAPERED ROLLER 30204A	2	21	36118	BEARING, TAPERED ROLLER 30207A	1
11	36107	TRANS. WORM SHAFT 20:1	1	22	36103	TRANS. OUTPUT FLANGE	1
				23	36119	TRANS. OIL SEAL, OUTPUT 35 x 55 x 11	1

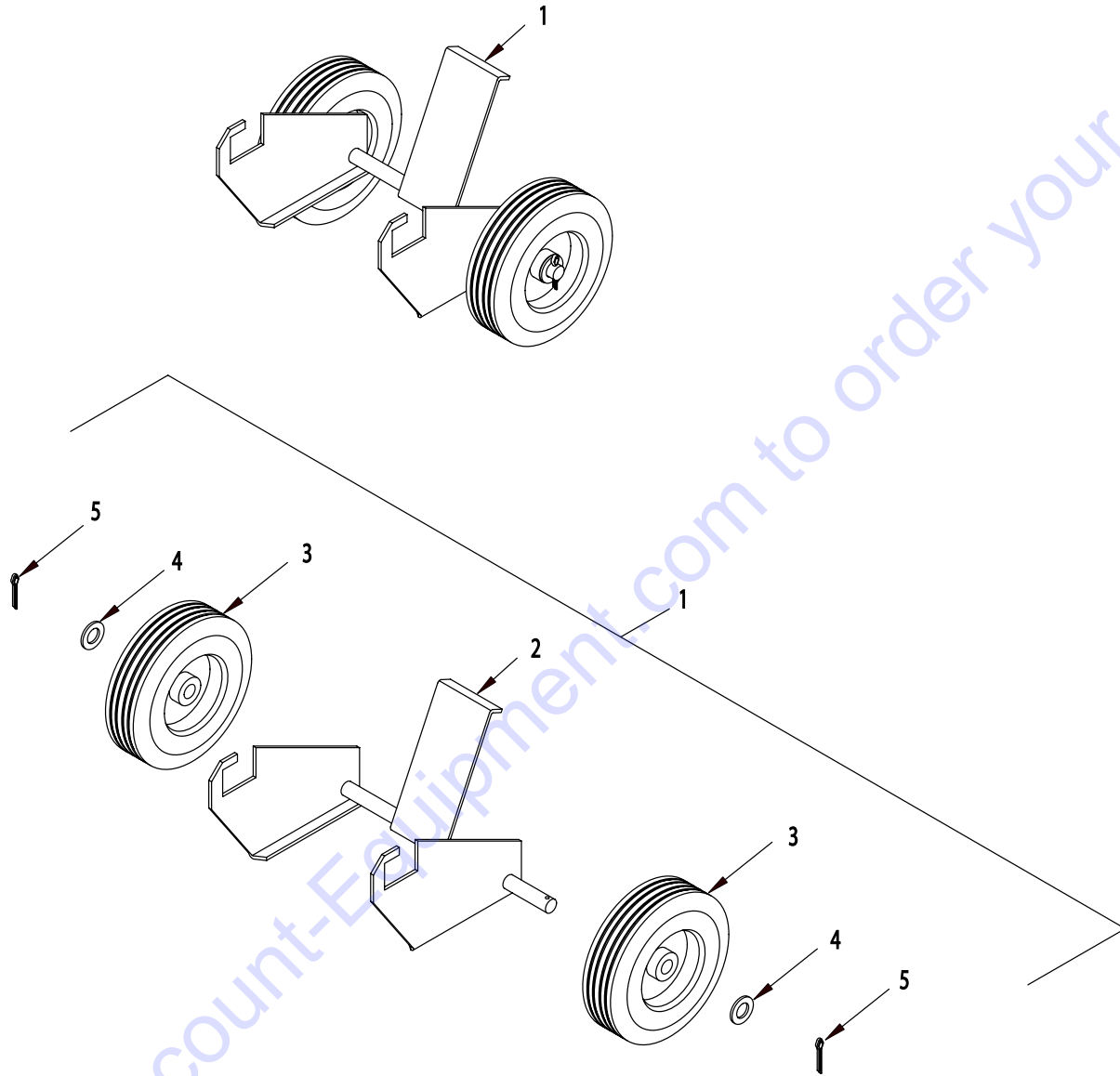
**ILLUSTRATION 9 : 40:1 RATIO TRANSMISSION ASSEMBLY  
FOR REDUCED SPEED TROWELS, PART# 3664-RS**



ITEM#	PART#	DESCRIPTION	QTY.
	3664RS	TRANSMISSION SUBASSY. (INCLUDES ITEMS 1-26)	1
1	3672	GEAR CASE	1
2	10776	PIPE PLUG 1/4 NPT	1
3	3669	AIR VENT 1/8 NPT	1
4	3686	BEARING CUP (INPUT)	2
5	3687	BEARING CONE (INPUT)	2
6	3688	SPACER, INPUT SHAFT	2
7	36018	TRANS. WORM GEAR W10A-1G X 3/4	1
8	3685	KEY, WOODRUFF 3/16x1 (#608)	2
9	3691	INPUT SPIRAL RING 3/4"	1
10	3692	SHAFT, INPUT	1
11	3693	GASKET SET (INPUT)	1
12	3694	INPUT SHAFT CAP	1
13	3695	SEAL, OIL .750 X 1.375 X .250 (INPUT)	1
14	10053	SCREW, CAP 5/16-18x3/4	4
15	3673	BEARING CUP (OUTPUT)	2
16	3674	BEARING CONE (OUTPUT)	2
17	36019	GEAR, BRONZE GHU-40:1	1
18	3678	KEY, WOODRUFF 1/4x1-1/4 (#810)	1
19	3677	OUTPUT SPIRAL RING 1-1/4"	1
20	3676	SHAFT, OUTPUT	1
21	3679	SPACER, OUTPUT SHAFT	1
22	3681	GASKET SET (OUTPUT)	1
23	3682	GEAR CASE PLATE	1
24	3683	SEAL, OIL 1.250 X 1.686 X .375 (OUTPUT)	1
25	10801	WASHER, LOCK 5/16	6
26	3684	SCREW, CAP 5/16-18x7/8	6



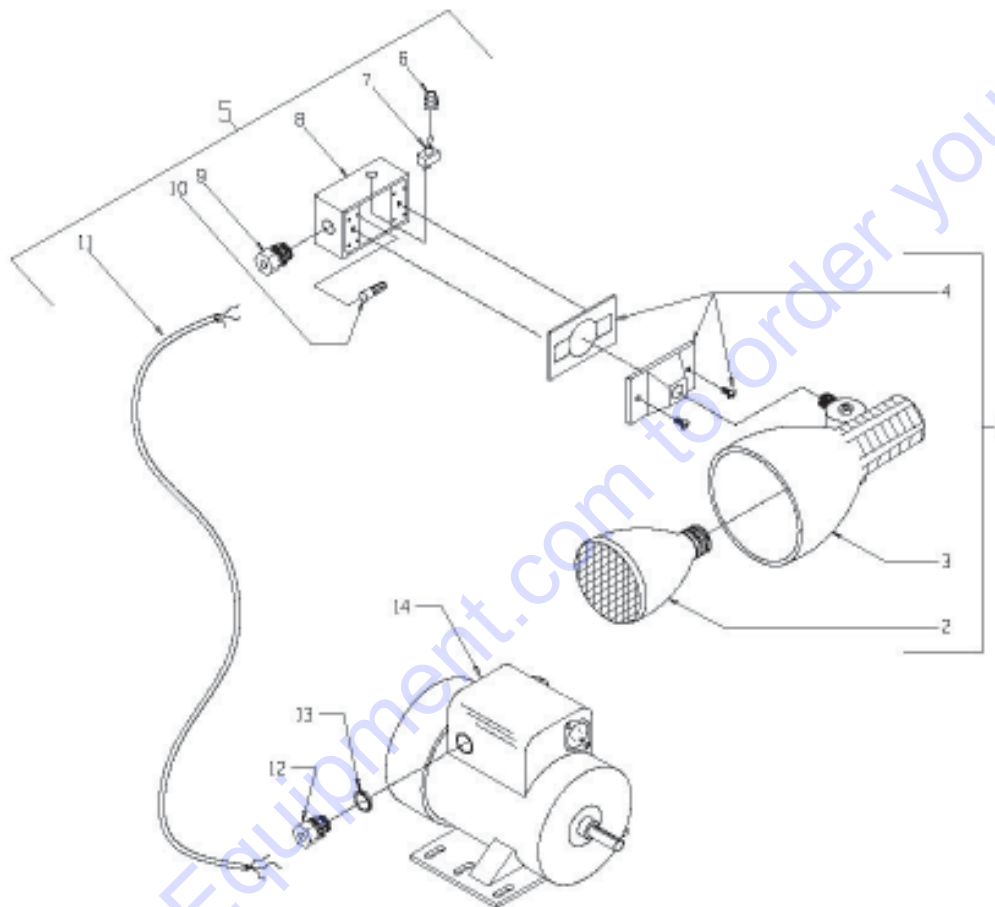
ILLUSTRATION 10 : OPTIONAL "TOTE-A-TROWEL"



ITEM#	PART#	DESCRIPTION	QTY.
1	81400	TAT II "TOTE-A-TROWEL" TRANSPORTER (INCLUDES ITEMS 2-5)	1
2	81401	MAIN FRAME, TAT II	1
3	79013	WHEEL 8 x 2-1/2 x 3/4"BRG	2
4	10009	WASHER, FLAT 3/4	2
5	10306	PIN, COTTER 3/16x1-1/4	2

**ILLUSTRATION 11 : OPTIONAL 110 VOLT LAMP KIT**

**PART # C84001**

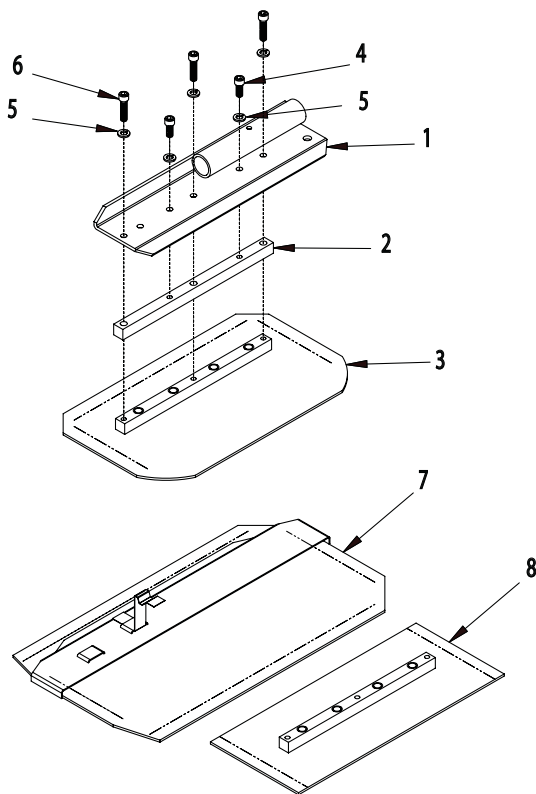


ITEM#	PART#	DESCRIPTION	QTY.
1	C84007A	LAMP SUB-ASSEMBLY( INCLUDES ITEMS 2 – 4 )	1
2	C84006	LIGHT BULB, FLOOD 75W	1
3	C84007	LAMP HOLDER	1
4	C84008	LAMP HOLDER BOX COVERW/ GASKET & SCREWS	1
5	C84009A	SWITCH BOX SUB-ASSEMBLY( INCLUDES ITEMS 6 – 11 )	1
6	10674	BOOT, TOGGLE SWITCH	1
7	10633	SWITCH, TOGGLE SPST	1
8	C84009	BOX, SINGLE GANG WEATHERPROOF	1
9	40066	CONNECTOR, STRAIN RELIEF 1/2 NPT x .35 -.45 RANGE	1
10	10965	CONNECTOR, WIRE NUT ( RED )	1
11	C84029	WIRE HARNESS 16/3 x 66"	1
12	10959	CONNECTOR, STRAIN RELIEF 3/4 NPT x .550-.650"	1
13	10740	CONDUIT LOCK NUT 3/4 NP	1
14	-----	MOTOR, ELECTRIC	1

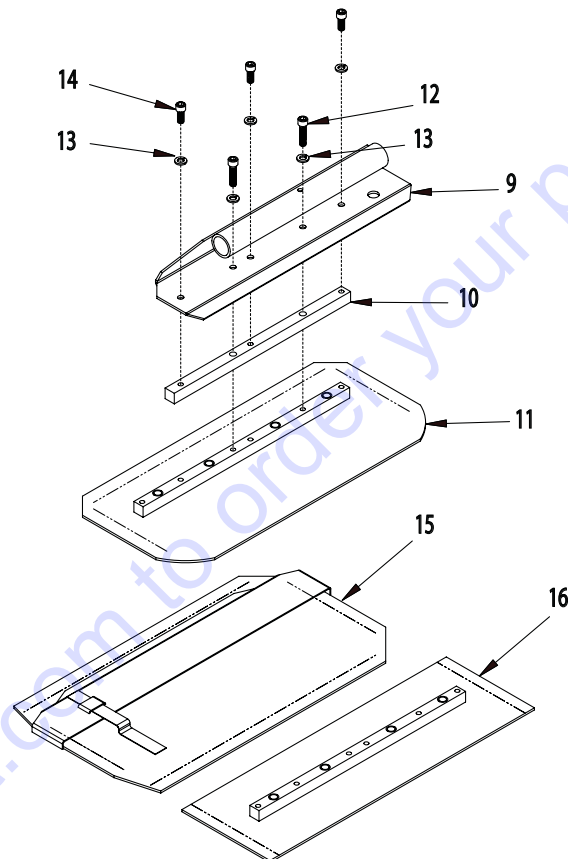


## BOLT-ON STYLE TROWEL BLADE GROUPING -OPTIONAL-

36" TROWELS



46" TROWELS



ITEM#	PART#	DESCRIPTION	QTY.**
1	36007	ARM, BLADE 13" (STANDARD ARM ALSO USED FOR ADAPTERS)	1
2	36016	ADAPTER BAR, CONV. BLADE 5/8" SQ. x 10-1/4" (FITS CURRENT EDCO TROWELS WITH 13" ARM)	1
3	40040-C	C-1C COMB. TROWEL BLADE, CONV. BOLT-ON	1
4	11639	SCREW, SKT. HD. CAP 5/16-18 X 5/8	2
5	10801	WASHER, LOCK 5/16	5
6	C10577	SCREW, SKT HD CAP 5/16-18 X 1-1/4	3
7*	40060-CE	M-1CE FLOAT TROWEL BLADE, CONV. SLIP-ON (FITS CURRENT EDCO TROWELS ONLY WITH 13" ARM)	1
	40060-C	M-1C FLOAT TROWEL BLADE, CONV. SLIP-ON (FITS OLD EDCO TROWELS WITH 11" ARM)	1
8	40050-C	F-1C FINISH TROWEL BLADE, CONV. BOLT-ON	1
9	4618	ARM, BLADE 15-1/4" (CONV. BOLT-ON ONLY)	1
10	4619	ADAPTER BAR, CONV. BLADE 5/8" SQ. x 12"	1
11	40070-C	C-3C COMB. TROWEL BLADE, CONV. BOLT-ON	1
12	C10577	SCREW, SKT. HD. CAP 5/16-18 X 1-1/4	2
13	10801	WASHER, LOCK 5/16	5
14	11639	SCREW, SKT HD CAP 5/16-18 X 5/8	3
15*	40090-C	M-3C FLOAT TROWEL BLADE, CONV. SLIP-ON	1
16	40080-C	F-3C FINISH TROWEL BLADE, CONV. BOLT-ON	1
* SLIP-ON FLOAT BLADES REQUIRE BOLT-ON FINISH BLADES			
** QUANTITIES ARE BASED ON SINGLE BLADE ARM (MULTIPLY BY # OF BLADES PER TROWEL)			



# PARTS FINDER

**Search Website  
by Part Number**



**Search Manual  
Library For Parts  
Manual & Lookup Part  
Numbers – Purchase  
or Request Quote**

**Search Manuals**

Enter your information to help us find the right parts manual for your machine.

\* Brand:

\* Model:

\* Serial:

\* Part Number:

SEARCH

**Can't Find Part or  
Manual? Request Help  
by Manufacturer,  
Model & Description**

**Parts Order Form**

Please fill in the following information to help us find the right part for your machine.

Manufacturer:	<input type="text"/>
Model:	<input type="text"/>
Description:	<input type="text"/>
Part Number:	<input type="text"/>
Quantity:	<input type="text"/>
Notes:	<input type="text"/>

Submit

Discount-Equipment.com is your online resource for quality parts & equipment.

Florida: **561-964-4949** Outside Florida TOLL FREE: **877-690-3101**

**Need parts?**

Click on this link: <http://www.discount-equipment.com/category/5443-parts/> and choose one of the options to help get the right parts and equipment you are looking for. Please have the machine model and serial number available in order to help us get you the correct parts. If you don't find the part on the website or on one of the online manuals, please fill out the request form and one of our experienced staff members will get back to you with a quote for the right part that your machine needs.

We sell worldwide for the brands: Genie, Terex, JLG, MultiQuip, Mikasa, Essick, Whiteman, Mayco, Toro Stone, Diamond Products, Generac Magnum, Airman, Haulotte, Barreto, Power Blanket, Nifty Lift, Atlas Copco, Chicago Pneumatic, Allmand, Miller Curber, Skyjack, Lull, Skytrak, Tsurumi, Husquvarna Target, Stow, Wacker, Sakai, Mi-T-M, Sullair, Basic, Dynapac, MBW, Weber, Bartell, Bennar Newman, Haulotte, Ditch Runner, Menegotti, Morrison, Contec, Buddy, Crown, Edco, Wyco, Bomag, Laymor, EZ Trench, Bil-Jax, F.S. Curtis, Gehl Pavers, Heli, Honda, ICS/PowerGrit, IHI, Partner, Imer, Clipper, MMD, Koshin, Rice, CH&E, General Equipment, Amida, Coleman, NAC, Gradall, Square Shooter, Kent, Stanley, Tamco, Toku, Hatz, Kohler, Robin, Wisconsin, Northrock, Oztec, Toker TK, Rol-Air, APT, Wylie, Ingersoll Rand / Doosan, Innovatech, Con X, Ammann, Mecalac, Makinex, Smith Surface Prep, Small Line, Wanco, Yanmar