

OPERATION AND PARTS MANUAL



www.Discount-Equipment.com

GloBug 4-Spot
MODEL GB43SC
LIGHTING SYSTEM
(FOR USE WITH MQ SERIES GENERATORS)

Revision #5 (10/09/19)



THIS MANUAL MUST ACCOMPANY THE EQUIPMENT AT ALL TIMES.

TO PURCHASE THIS PRODUCT PLEASE CONTACT US



**Equipment Financing and
Extended Warranties Available**



**Discount-Equipment.com is your online resource for
commercial and industrial quality parts and equipment sales.**

561-964-4949

visit us on line @ www.discount-equipment.com

Select an option below to find your Equipment

Search by Manufacturer

Search by Product Type

Request a Quote

We sell worldwide for the brands: Genie, Terex, JLG, MultiQuip, Mikasa, Essick, Whiteman, Mayco, Toro Stone, Diamond Products, Generac Magnum, Airman, Haulotte, Barreto, Power Blanket, Nifty Lift, Atlas Copco, Chicago Pneumatic, Allmand, Miller Curber, Skyjack, Lull, Skytrak, Tsurumi, Husquvarna Target, Stow, Wacker, Sakai, Mi-T-M, Sullair, Basic, Dynapac, MBW, Weber, Bartell, Bennar Newman, Haulotte, Ditch Runner, Menegotti, Morrison, Contec, Buddy, Crown, Edco, Wyco, Bomag, Laymor, EZ Trench, Bil-Jax, F.S. Curtis, Gehl Pavers, Heli, Honda, ICS/PowerGrit, IHI, Partner, Imer, Clipper, MMD, Koshin, Rice, CH&E, General Equipment, Amida, Coleman, NAC, Gradall, Square Shooter, Kent, Stanley, Tamco, Toku, Hatz, Kohler, Robin, Wisconsin, Northrock, Oztec, Toker TK, Rol-Air, APT, Wylie, Ingersoll Rand / Doosan, Innovatech, Con X, Ammann, Mecalac, Makinex, Smith Surface Prep, Small Line, Wanco, Yanmar

PROPOSITION 65 WARNING



Go to Discount-Equipment.com to order your parts

TABLE OF CONTENTS

GB43SC GloBug 4-Spot

Proposition 65 Warning	2
Table of Contents	4
Safety Information	6–10
Specifications	11
Dimensions	12
General Information	13
Components	14–15
Setup	16–18
Operation	19
Storage	20–21
Maintenance	22–23
Troubleshooting	24–25
Wiring Diagram	26
Explanation of Code in Remarks Column	28
Suggested Spare Parts	29

Component Drawings

Nameplate and Decals	30–31
Base Plate Assembly	32–33
Electrical Assembly — Round Lamp	34–35
Electrical Assembly — Oval Lamp	36–37
Ballast Assembly	38–39
Main Mast Assembly	40–41
T-Handle Assembly	42–43
Steering Assembly	44–45
Outrigger Assembly	46–47
Mast Adapter Assembly	48–49
Mast Section Assembly	50–51

NOTICE

Specifications and part numbers are subject to change without notice.

SAFETY INFORMATION

Do not operate or service the equipment before reading the entire manual. Safety precautions should be followed at all times when operating this equipment. Failure to read and understand the safety messages and operating instructions could result in injury to yourself and others.





SAFETY MESSAGES

The four safety messages shown below will inform you about potential hazards that could injure you or others. The safety messages specifically address the level of exposure to the operator and are preceded by one of four words: **DANGER**, **WARNING**, **CAUTION** or **NOTICE**.

SAFETY SYMBOLS

 DANGER
Indicates a hazardous situation which, if not avoided, WILL result in DEATH or SERIOUS INJURY .
 WARNING
Indicates a hazardous situation which, if not avoided, COULD result in DEATH or SERIOUS INJURY .
 CAUTION
Indicates a hazardous situation which, if not avoided, COULD result in MINOR or MODERATE INJURY .
NOTICE
Addresses practices not related to personal injury.

Potential hazards associated with the operation of this equipment will be referenced with hazard symbols which may appear throughout this manual in conjunction with safety messages.

Symbol	Safety Hazard
	Burn hazards
	Electric shock hazards

SAFETY INFORMATION

GENERAL SAFETY

⚠ CAUTION

- **NEVER** operate this equipment without proper protective clothing, shatterproof glasses, respiratory protection, hearing protection, steel-toed boots and other protective devices required by the job or city and state regulations.



- **NEVER** operate this equipment when not feeling well due to fatigue, illness or when under medication.



- **NEVER** operate this equipment under the influence of drugs or alcohol.



- **ALWAYS** check the equipment for loosened threads or bolts before starting.

- **DO NOT** use the equipment for any purpose other than its intended purposes or applications.

NOTICE

- This equipment should only be operated by trained and qualified personnel 18 years of age and older.

- Whenever necessary, replace nameplate, operation and safety decals when they become difficult read.

- Manufacturer does not assume responsibility for any accident due to equipment modifications. Unauthorized equipment modification will void all warranties.

- **NEVER** use accessories or attachments that are not recommended by Multiquip for this equipment. Damage to the equipment and/or injury to user may result.

- **ALWAYS** know the location of the nearest fire extinguisher.



- **ALWAYS** know the location of the nearest first aid kit.



- **ALWAYS** know the location of the nearest phone or **keep a phone on the job site**. Also, know the phone numbers of the nearest **ambulance**, **doctor** and **fire department**. This information will be invaluable in the case of an emergency.



SAFETY INFORMATION

LIGHTING SYSTEM SAFETY

WARNING

- **NEVER** disconnect any **emergency or safety devices**. These devices are intended for operator safety. Disconnection of these devices can cause **severe injury, bodily harm or even death**. Disconnection of any of these devices will void all warranties.

CAUTION

- **NEVER** attempt service on a running machine.

NOTICE

- To prevent the lighting system from overturning, **NEVER** use in winds that exceed 22 mph (10 m/s).
- The lighting system should only be used in temperatures between 23° to 104°F (-5° to 40° C).
- **ALWAYS** keep the lighting system in proper running condition.
- Fix damage to lighting system and replace any broken parts immediately.
- **ALWAYS** store equipment properly when it is not being used. Equipment should be stored in a clean, dry location out of the reach of children and unauthorized personnel.

LAMP SAFETY

WARNING

- **NEVER** attempt to replace lamp with the power on. Always unplug the power cord from the generator or power source when changing the lamp.
- **ALWAYS** allow a sufficient amount of time for the lamp to **cool** before changing. The possibility exists of severe burns.

CAUTION

- **NEVER** use force when installing the lamp. Excessive force could cause the lamp to break, causing bodily harm.

NOTICE

- **NEVER** leave any grease or oil residue on lamp surface when replacing or removing lamp. This can create hot spots, reducing the service life of the lamp.
- **ALWAYS** make sure lamp surface is clean and dry.
- **ALWAYS** replace with MQ recommended type lamp. See parts section of this manual.
- **NEVER** unplug the lamp's AC power cable during operation.
- **ALWAYS** have a **trained technician** to install and remove lamp or replace any damaged fixture wiring.

SAFETY INFORMATION

GENERATOR SAFETY

If using a generator to power lighting system, refer to applicable generator manual safety information section.



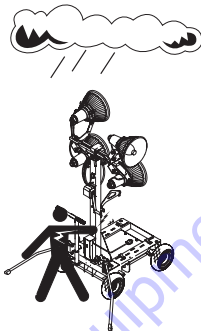
ELECTRICAL SAFETY

DANGER

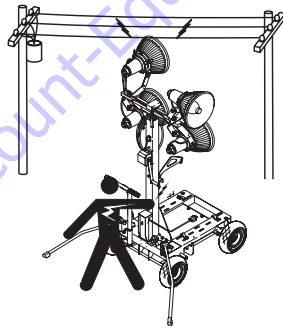
- Lighting system is equipped with a ground pin on the power plug. For your protection, **ALWAYS** complete the grounding path. **NEVER** insert the AC power plug into a 2-prong receptacle to operate lighting system.

When applying power to the lighting system, **ALWAYS** connect the AC power plug to a 3-prong receptacle that is grounded. The possibility exists of **electrical shock, electrocution and even death** if the lighting system is not grounded.

- **NEVER** operate lighting system or handle any electrical equipment while standing in water, while barefoot, while hands are wet or in the rain. A dangerous **electrical shock** could occur, causing **severe bodily harm or even death**.



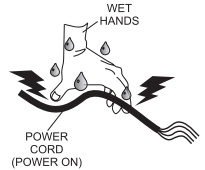
- **ALWAYS** make sure the area above the lighting system is open and clear of overhead power lines and other obstructions. Contact with overhead power lines or other obstructions could result in equipment damage, **electrical shock, electrocution and even death**.



Power Cord/Cable Safety

DANGER

- **NEVER** let power cords or cables lay in water.
- **NEVER** use **damaged** or **worn** cables or cords. Inspect for cuts in the insulation
- **NEVER** grab or touch a live power cord or cable with wet hands. The possibility exists of **electrical shock, electrocution or death**.
- Make sure power cables are securely connected. Incorrect connections may cause **electrical shock** and damage to the lighting system.



NOTICE

- **ALWAYS** make certain that proper power or extension cord has been selected for the job. See Cable Selection Chart in this manual.

LOADING AND UNLOADING

Cart Type - With Lifting Hook

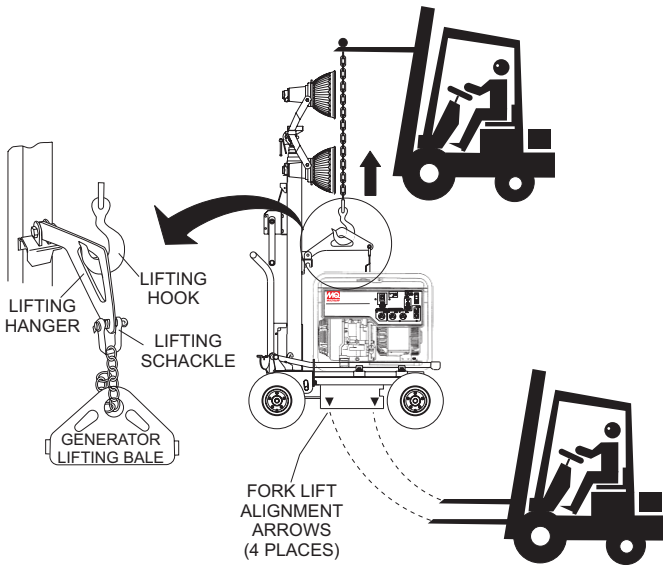
If lighting system is equipped with a transport lifting hook, refer to the following safety information.

CAUTION

- Before lifting, make sure that lighting system parts are not damaged and screws are not loosened or lost.
- **ALWAYS** make sure crane or lifting device has been properly secured to lifting hook of the equipment.
- **NEVER** lift the equipment while lighting system is running.
- Make sure the mast is completely lowered before lifting the lighting system.
- Use adequate lifting cable (wire or rope) of sufficient strength.

SAFETY INFORMATION

- Use one point suspension hook and lift straight upwards.



- Never allow any person or animal to stand underneath the equipment while lifting.
- **DO NOT** lift machine to unnecessary heights.

Cart Type - No Lifting Hook

If lighting system is not equipped with a transport lifting hook and the mast is removable, refer to the following safety information.

- Before lifting, make sure that the mast and lamp are removed as described in the manual.
- The cart can be safely lifted by two persons to the transport vehicle.

TRANSPORTING SAFETY

NOTICE

- When transporting the lighting system, if applicable, always place in **stow position** and place mast in its carrying case.
- **ALWAYS** remove lamp assembly from the mast when transporting lighting system. This will prevent damage to the bulb due to vibration.

SPECIFICATIONS

Table 1. Specifications	
Model	GB43SC
Input Voltage	120 VAC
Max. Current	18 Amps
Frequency	60 Hz Single-Phase
Appropriate Generator	1700 Watts
Wind Stability with Generator	65 mph (80.46 kph)
Weight (less generator)	364 lbs. (165 kg)
Lamp	
Lamp Type	Four 400-Watt Metal Halide
Lumens	136,000
Mast	
Number of Stages	3
Maximum Height	13.8 ft. (4.2 meters)
Generator	See Specified Generator Manual

DIMENSIONS

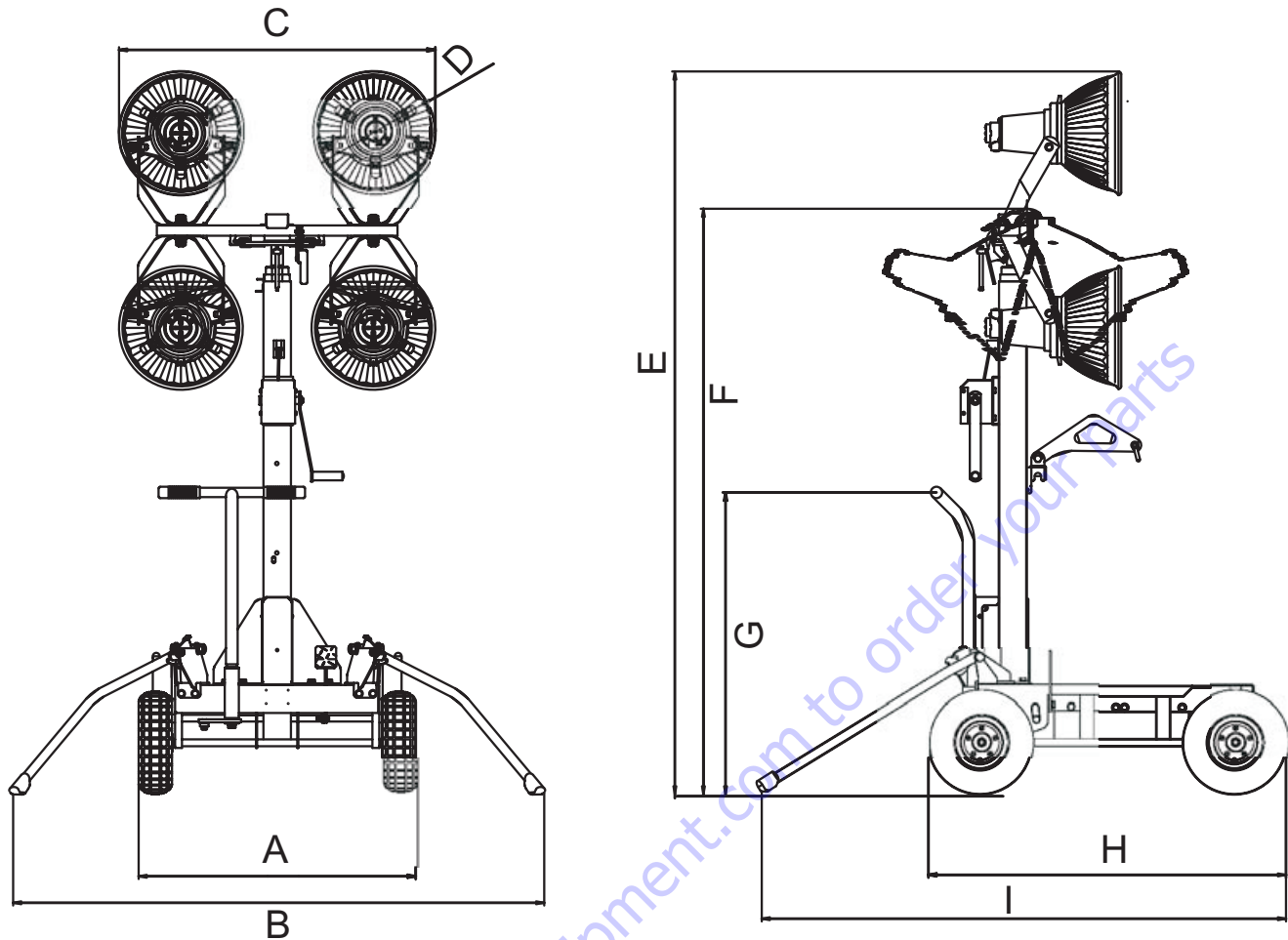


Figure 1. Dimensions

Table 2. Dimensions					
Reference Letter	Description	Dimension ft (mm)	Reference Letter	Description	Dimension ft (mm)
A	Wheel Base	2.62 (800)	F	Height (Mast Stowed)	5.58 (1,700)
B	Width (Outriggers Deployed)	5.25 (1,600)	G	Height (Steering Handle)	2.88 (878)
C	Width (Lighting Units)	3.02 (920)	H	Length (Front to Rear Wheel)	3.41 (1,040)
D	Standard Balloon Diameter	1.18 (360)	I	Length (Front Wheel to Outrigger)	5.09 (1,550)
E	Max. Height (Mast Deployed)	13.78 (4,200)			

The Multiquip GloBug 4-Spot is a general purpose floodlight tower intended for emergency and remote lighting conditions. The GloBug can be powered by a variety of Multiquip generators. Power requirements for running the GloBug are 120 VAC, 60 Hz @ 18 amps.

NOTICE

All information related to the generator will be referenced in a separate (supplied) Operation and Parts Manual. Operation and maintenance of the generator will not be referenced in this manual.

The lighting system of Multiquip's GloBug 4-Spot is comprised of four "Metal Halide" 400 watt lamp with an output of 136,000 lumens.

The GloBug 4-Spot has the following features:

- Stainless steel mast which prevents rust.
- Mast stopper prevents sudden drop of mast.
- Steering wheel for easy cart movement.
- Large-sized pneumatic tires for easy travel even in rough and uneven roads.
- Secure lock-type foot brake.
- Tire bumper for protection.
- Easy to disassemble and service parts.
- Safety winch prevents reverse winding.

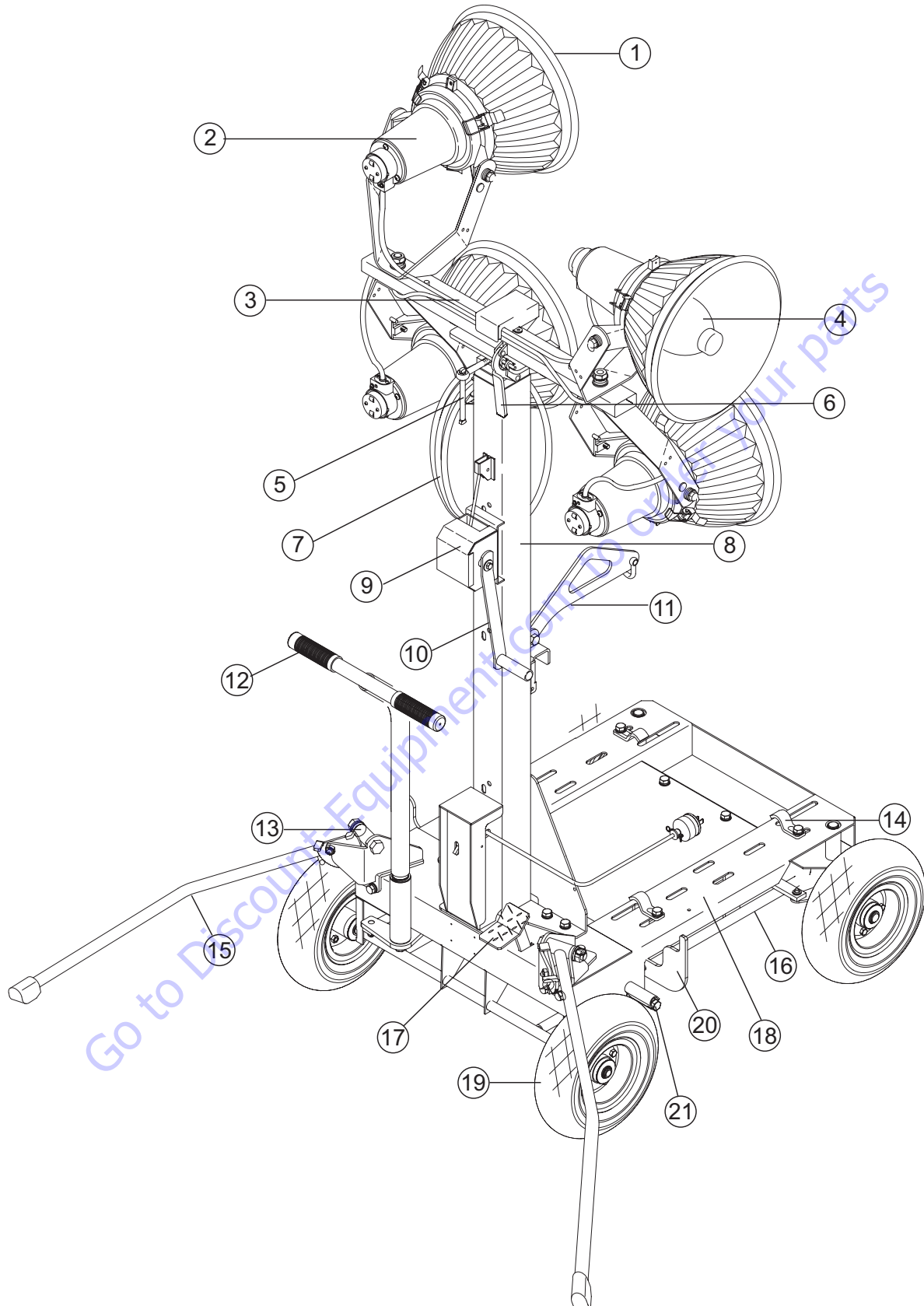


Figure 2. Major Components

COMPONENTS

Figure 6 shows the location of the controls and components for the GloBug 4-Spot. The functions of each control is described below:

1. **Reflex Mirror** — Enhances lighting from the bulbs.
2. **Lighting Unit** — Consists of 4 lamps in their sockets.
3. **Lamp Stand** — holds the four lamps of the lighting unit together.
4. **Lamp** — 400 watt metal-halide type lamp. Replace with only MQ recommended type lamp. Always allow a sufficient amount of time for the lamp to cool down before changing.
5. **Adjust Lever** — This lever allows the lamp to be positioned up or down. Turn counterclockwise to release lamp and position. Turn clockwise to tighten.
6. **Fold Lever** — Holds the lamp stand in place after adjusting its height.
7. **Lamp Power Cable** — Connects the lamps to the power (generator).
8. **Mast** — This mast is comprised of three separate stages. The mast can be raised in excess of 13.78 feet. (4.2 meters). Again when raising the mast, always be on the lookout for overhead obstructions.
9. **Mast Winch** — Use this winch to raise and lower the mast. Always be on the lookout for overhead obstructions. Keep immediate area free of bystanders and debris when raising the mast.
10. **Winch Handle** — Use this handle to adjust the mast height.
11. **Lift Hanger** — When lifting of the GloBug is required always use a suitable lifting device of adequate lifting capability. NEVER stand underneath the GloBug while it is being lifted.
12. **Steering Handle** — The GloBug can be moved in either a forward or reverse direction by pulling back or pushing forward on the T-handle. In addition the front wheels are designed to turn in the opposite direction of the T-handle placement thus allowing the GloBug to turn either left or right.
13. **Counterweight Lever** — Holds the outriggers in place when deployed.
14. **Locking Clamps** — To secure the generator to the GloBug cart platform, place clamps (4) around the pipe frame of the generator. Tighten securely to prevent movement.
15. **Outriggers** — ALWAYS deploy the outriggers when raising the mast.
16. **Guide Square Pipe** — frames the generator.
17. **Brake Pedal** — Step on this pedal to apply the brakes. To release the brakes, press down on brake pedal again.
18. **Cart** — Holds the generator that supplies power to the lighting unit.
19. **Tires** — The GloBug 4-Spot uses 4 pneumatic type tires. Replace with only recommended type tire. NEVER allow the rear tires to go flat. This could adversely affect the braking system. Inflate tires to 35.5 psi (245kPa).
20. **Catcher** — Holds the outrigger in place in the stow position.
21. **Brake Pad** — When the brake pedal is pressed, this pad will strike and hold the rear tires in place. Make sure rear tires are inflated to the correct air pressure.

CAUTION



Please read this entire manual carefully before attempting to operate the GloBug. Failure to read this manual could cause damage to the GloBug and serious injury to the operator.

CART SETUP

1. Using the T-handle (Figure 3), place the GloBug on a firm level surface so that it will not slide or turn over.

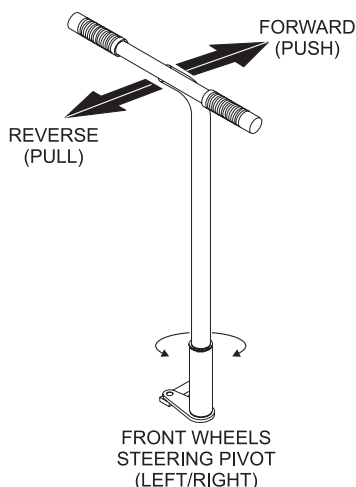


Figure 3. T-Handle (Directional Control)

2. To apply the parking brake (Figure 4), step on the brake pedal and pull back on the T-handle. This will lock the rear wheels. For additional safety, use chock blocks to prevent rolling.

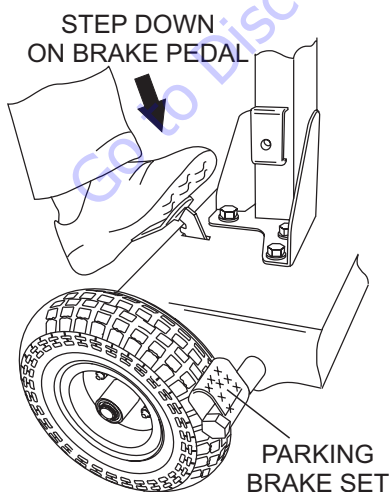


Figure 4. Parking Brake (Set Position)

3. Lift up on each outrigger (2) from its stow position, rotate backwards and place it in the deployed position, as shown in Figure 5. The outriggers will automatically lock in place once they touch the ground.

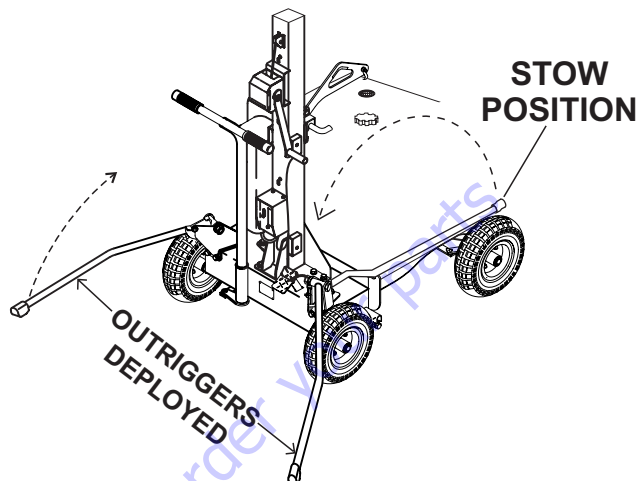


Figure 5. Outriggers (Deployed Position)

LAMP ASSEMBLY

1. Screw the lamp into the socket (use 400-watt metal-halide type lamp). Always allow a sufficient amount of time for the lamp to cool down before changing. See Figure 6.

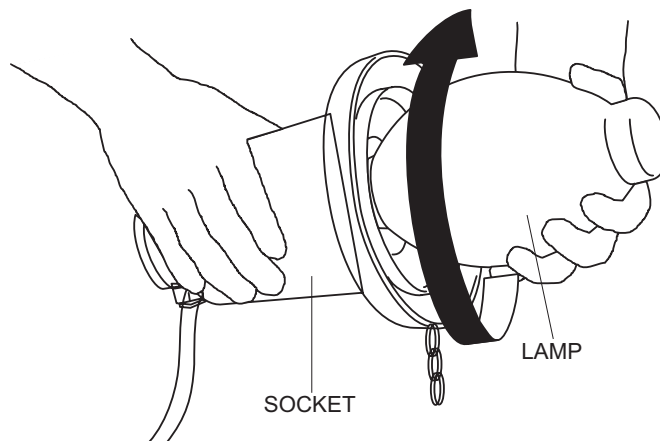


Figure 6. Installing the Lamp

2. Adjust the reflex mirror and the socket together so that the cables of the two upper lighting units are positioned downward and the cables of the two lower lighting units are positioned upwards. See Figure 7.

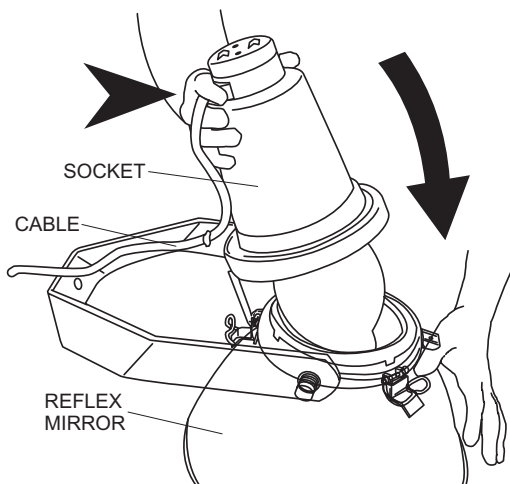


Figure 7. Positioning the Socket

3. Tighten all three latches to secure reflex mirror to the socket. See Figure 8.

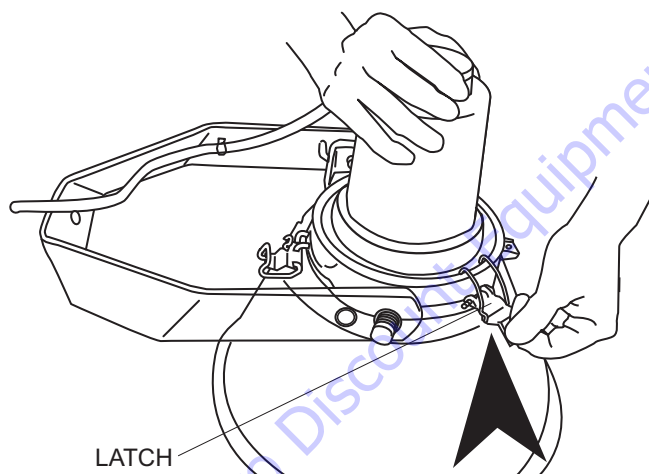


Figure 8. Securing Latch

RAISING THE LAMP STAND

1. Support the lighting units with one hand and pull up the fold lever with the other hand. The lever will spring up. See Figure 9.

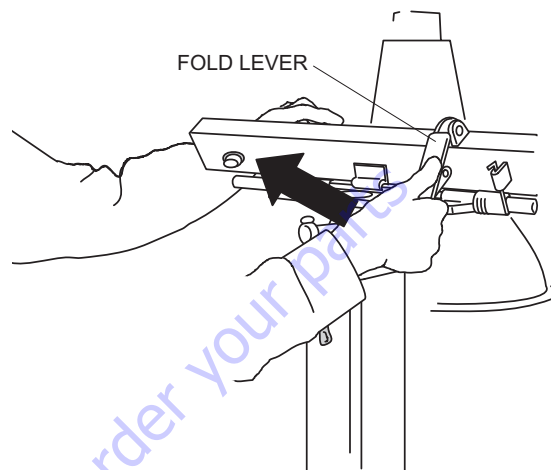


Figure 9. Raising Lamp Stand

2. Push up the lighting unit and push down the fold lever to lock the lamp stand (Figure 10).

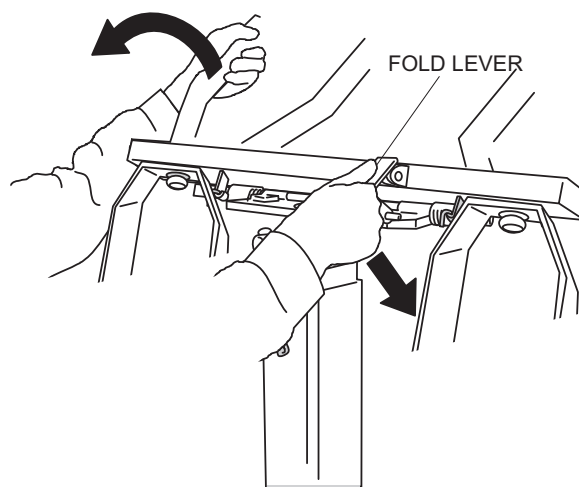


Figure 10. Locking Lamp Stand

CAUTION

When operating the fold lever, keep hands and fingers clear of the pinch points to prevent injury.

TURNING ALL LIGHTS IN ONE DIRECTION

1. Loosen the adjust lever. Turn the lighting units in the desired direction (Figure 11).

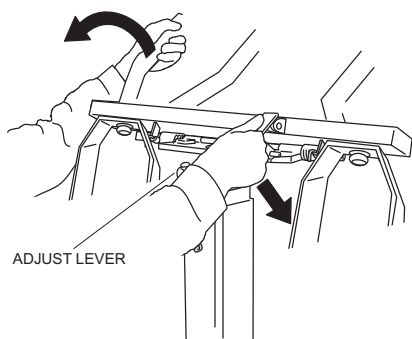


Figure 11. Adjusting Direction of Lighting Units

TURNING LIGHTS INDIVIDUALLY

1. Hold the arm of the lamp and turn it to the desired direction (Figure 12).

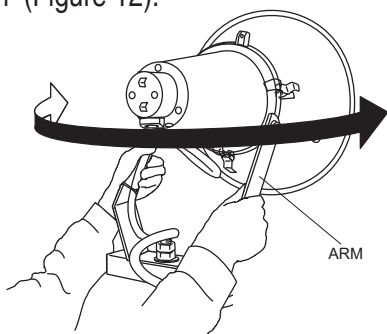


Figure 12. Adjusting Direction of Individual Lamp

ADJUSTING ANGLE OF THE LIGHTS

1. Hold the socket of the lamp and tilt it to the desired direction (Figure 13).

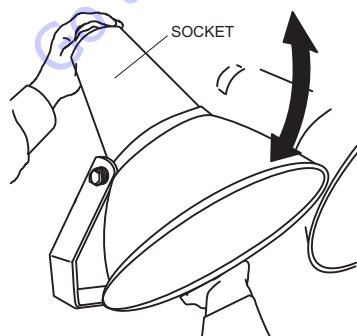
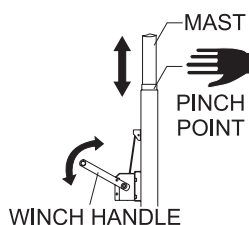


Figure 13. Adjusting Angle of Light

CAUTION



When raising or lowering the mast, keep hands and fingers clear of the various mast sections, this will prevent hands and fingers from getting pinched.

ADJUSTING HEIGHT OF THE LIGHTS

2. Turn the handle of the mast winch clockwise to raise the lighting unit and turn the handle of the mast winch counterclockwise to lower the lighting unit (Figure 14).

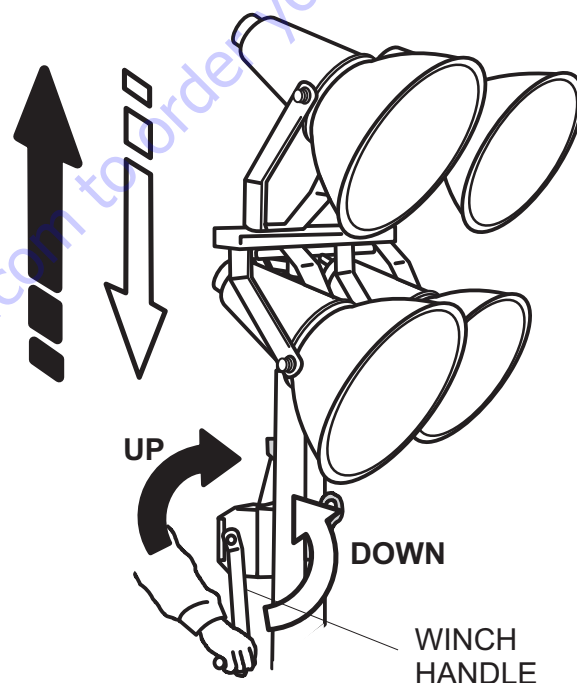


Figure 14. Adjusting Height of Light

DANGER



When raising mast, **ALWAYS** be on the lookout for overhead obstructions such as high voltage power lines. The possibility exists of electrocution, even death, if the GloBug comes in contact with high voltage power lines.

APPLYING POWER

1. Make sure the generator lamp switch (Figure 15) is in the OFF position.

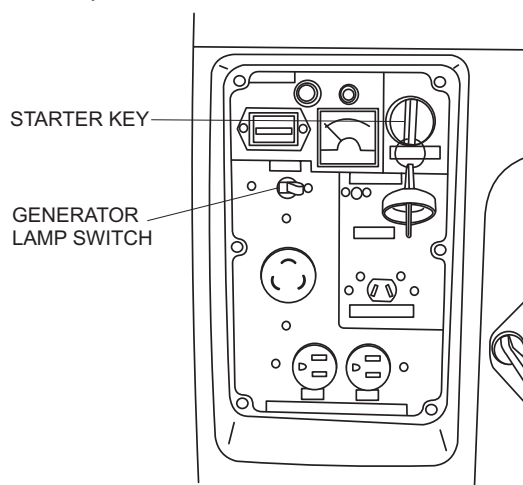


Figure 15. Generator Lamp Switch

CAUTION



Before attempting to operate the generator, **READ** the entire operation section of the manual. Failure to read manual could cause severe damage to the equipment and bodily harm to the operator.

2. The GloBug has a power requirement of 120 VAC, 60 Hz @ 18 amps. Connect the AC power cord to the 120 VAC twist-lock receptacle (Figure 16) on the supplied generator.

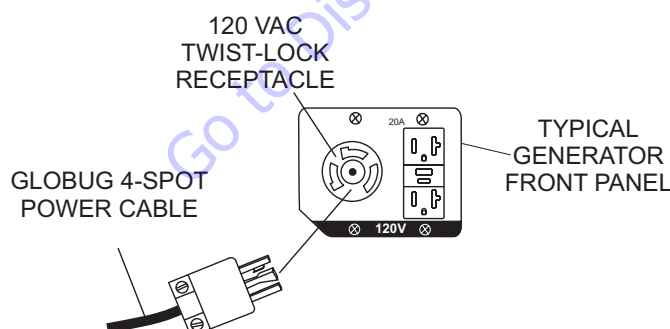


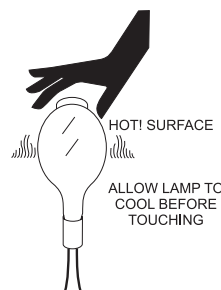
Figure 16. 120 VAC Receptacle

3. Start the generator as referenced in the "Startup" section of the supplied generator manual.
4. Leave the engine idling for about 3 minutes to warm it up.
5. Place the generator lamp switch (Figure 15) to the ON position.
6. The lamp should light up and give a fully bright light in about 5 minutes. If the lamp is not on, check all connections and repeat steps 1 through 5. If the lamp still does not come on, contact the MQ service department.

SHUTDOWN

1. Place the generator lamp switch (Figure 15) to the OFF position.
2. Disconnect the GloBug AC power cable from the generator.
3. Shutdown generator as referenced in the "Shutdown" section of the supplied generator manual.

CAUTION



Allow a sufficient amount of time (15 to 20 minutes) for the lamp to cool down before turning on lighting unit again. Do not touch lamp before cooling down. Lamp surface is very hot and can cause burns.

CAUTION

DO NOT shut down generator engine with the lamp switch on. This could cause damage or break the generator.

PREPARATION OF LIGHTING UNIT FOR STORAGE

1. Using the mast winch (Figure 14), lower the mast fully. Turn winch handle counterclockwise to lower mast.
2. Set the lighting units facing the front (Figure 17).

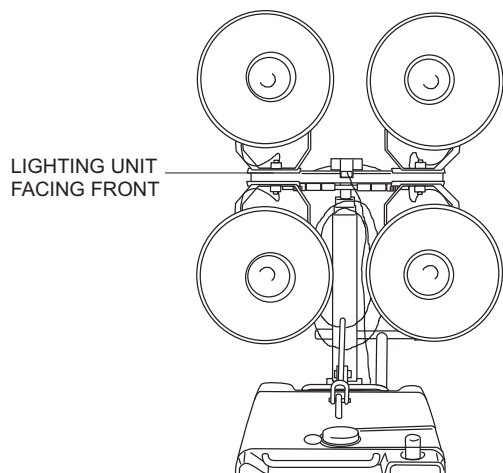


Figure 17. Lighting Unit Facing Front

3. Holding the lighting unit with one hand, pull up the fold lever with the other hand (Figure 18).

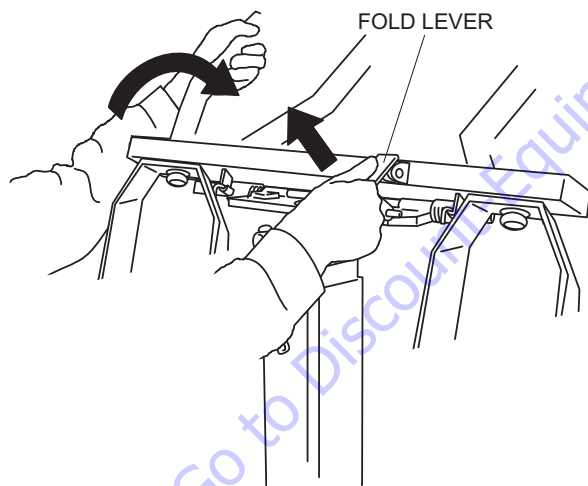


Figure 18. Fold Lever

4. Push down the lighting unit (Figure 19). Some force is required when pushing down because of the installed springs.

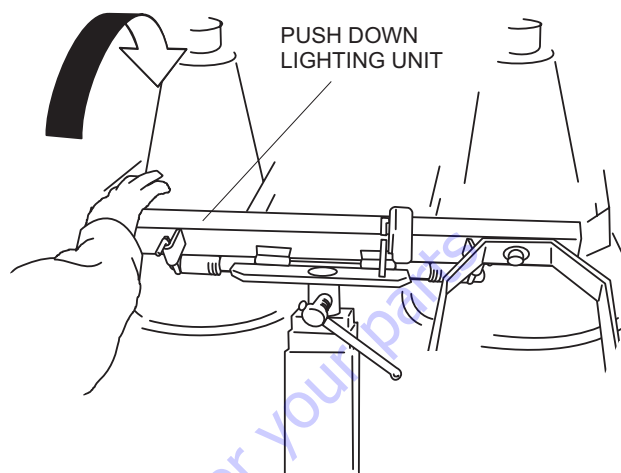


Figure 19. Pushing Down Lighting Unit

5. After lighting unit has been completely pushed down, push down fold lever (Figure 20) to lock the lamp stand in place.

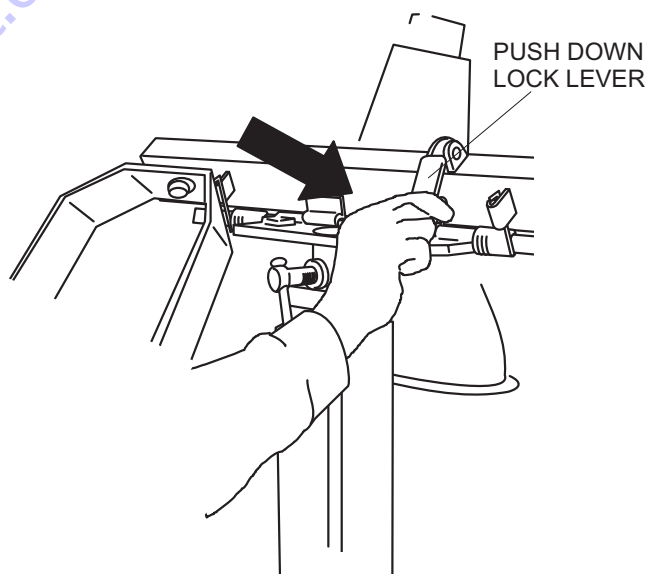


Figure 20. Locking Lamp Stand

6. To unlock outriggers, push downward on the counterweight lever indicated by arrow (Figure 21).

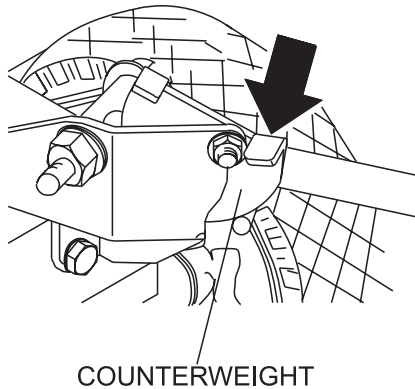


Figure 21. Outriggers (Released)

7. Grab hold of outrigger, pull upward, push down and place in stow position (Figure 22).

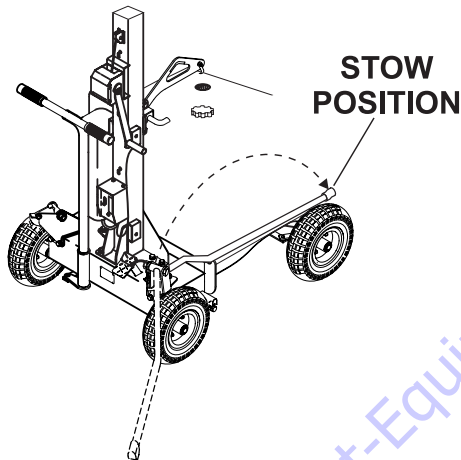


Figure 22. Outriggers (Stow Position)

8. Press down on the top of the brake pedal (Figure 22) and hold, then release. This action will disengage the brake mechanism and allow the GloBug to be moved.

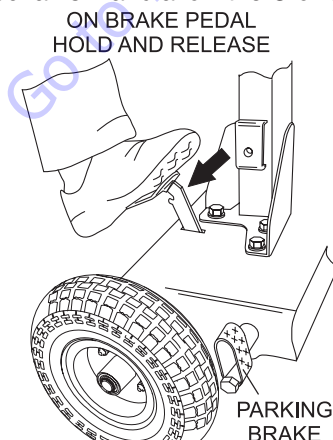


Figure 23. Parking Brake (Released Position)

STORAGE

1. Wipe dirt or foreign matter that may have accumulated on the GloBug 4-Spot during operation. Use a mild detergent to clean the unit. **DO NOT** spray the engine with water.
2. Avoid storing the GloBug in areas that can be exposed to rain, harsh elements, and high humidity.
3. Place the GloBug in a clean dry location away from dirt and debris.

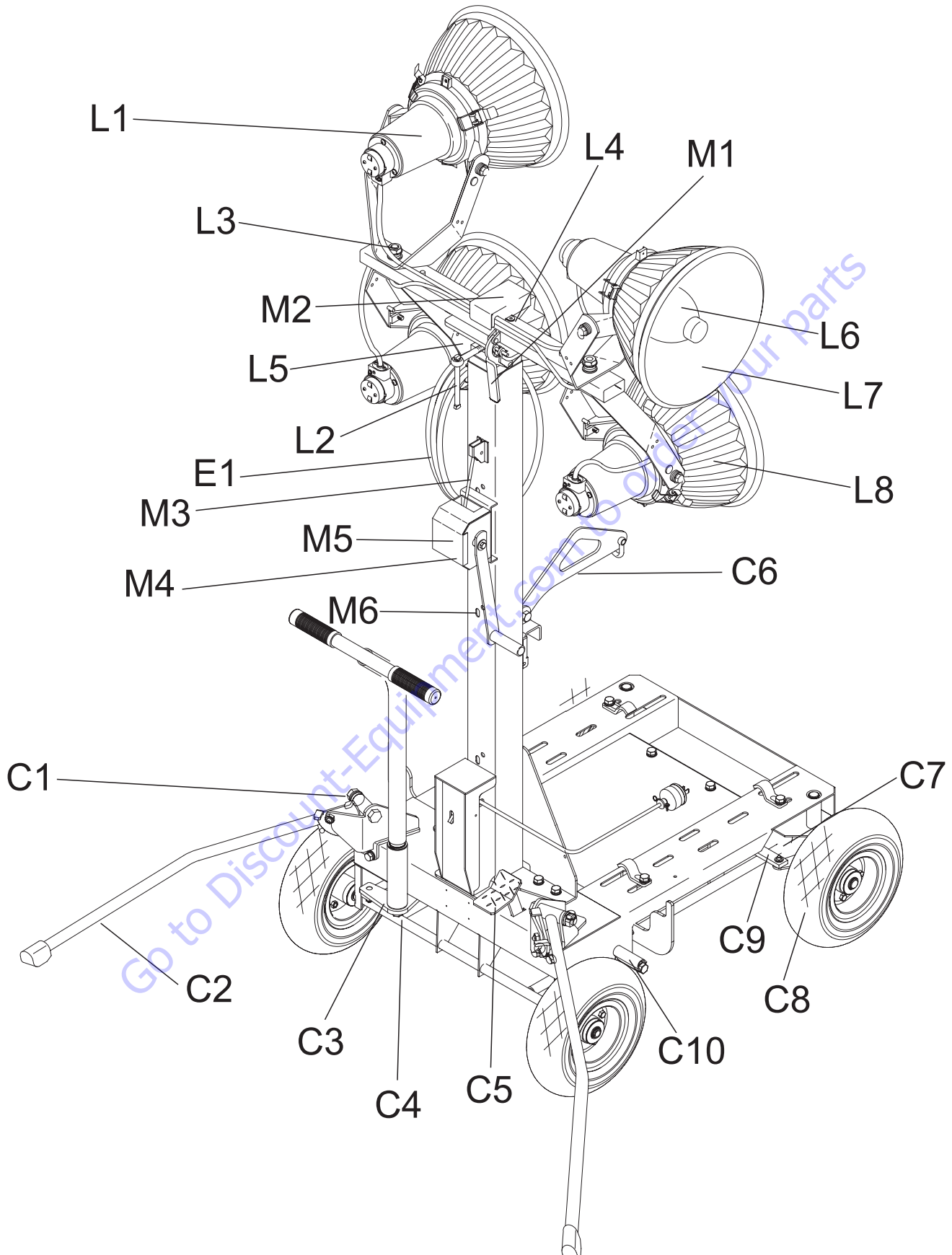


Table 3. Maintenance Chart

Location		Part	Symptom	Solution	Freq.
Lamp	L1	Lamp Base	Lamp base loose?	Screw in securely.	❖
	L2	Pin Contact	Pin contact loose or disconnected?	Tighten or connect securely.	■
	L3	Nut	Nut too loose or too tight?	Tighten correctly.	❖
	L4	Hinge for Lamp Stand	Hinge does not move smoothly?	Apply grease.	●
	L5	Pivot for Lamp Stand	Pivot does not turn smoothly?	Apply grease.	●
	L6	Lamp	Lamp burned or broken?	Replace.	❖
	L7	Front Glass	Front glass dirty?	Wipe off dirt.	❖
	L8	Reflex Mirror	Reflex mirror dirty or broken?	Wipe off dirt or replace.	❖
Mast	M1	Fold Lever	Fold lever does not lock and unlock properly?	Repair.	●
	M2	Mast Sliding Surface	Mast sliding surface does not slide smoothly?	Apply grease.	❖
	M3	Wire Rope	Damaged?	Apply grease or replace.	❖
	M4	Wire Rope End	Is wire end damaged (caulking)?	Replace.	❖
	M5	Winch	Defective winch brake?	Repair or replace.	❖
	M6	Safety Stop	Safety latch defective?	Repair or replace.	▲
Cart	C1	Counter-Weight	Does not move smoothly?	Spray grease.	●
	C2	Outriggers	Does not move smoothly?	Spray grease.	●
	C3	T-handle and Wheels	Loose links?	Tighten securely.	■
	C4	Bolt for Handle	Loose bolt?	Tighten securely.	■
	C5	Brake Pedal	Linkage not working smoothly?	Check, spray grease	❖
	C5	Brake Pedal	Notch worn-out?	Replace.	❖
	C6	Hanger	Loose installation?	Fasten securely.	■
	C7	Front Wheel Pivot	Does not turn smoothly?	Check, apply grease.	●
	C8	Tires	Tire pressure not 35.5 psi (294 kPa)?	Adjust.	❖
	C9	Link for Front Shaft	Linkage does not move smoothly?	Spray grease.	●
	C10	Brake	Does not work properly?	Adjust.	❖
Electric	E1	Power Cable	Defective or worn cable?	Replace.	❖
	E2	Non-load Voltage	Generator output not 125 VAC?	Adjust or replace generator.	●
❖ - Daily Check ■ - Every 20 Hours ● - Every 100 hours ▲ - Every 500 hours					

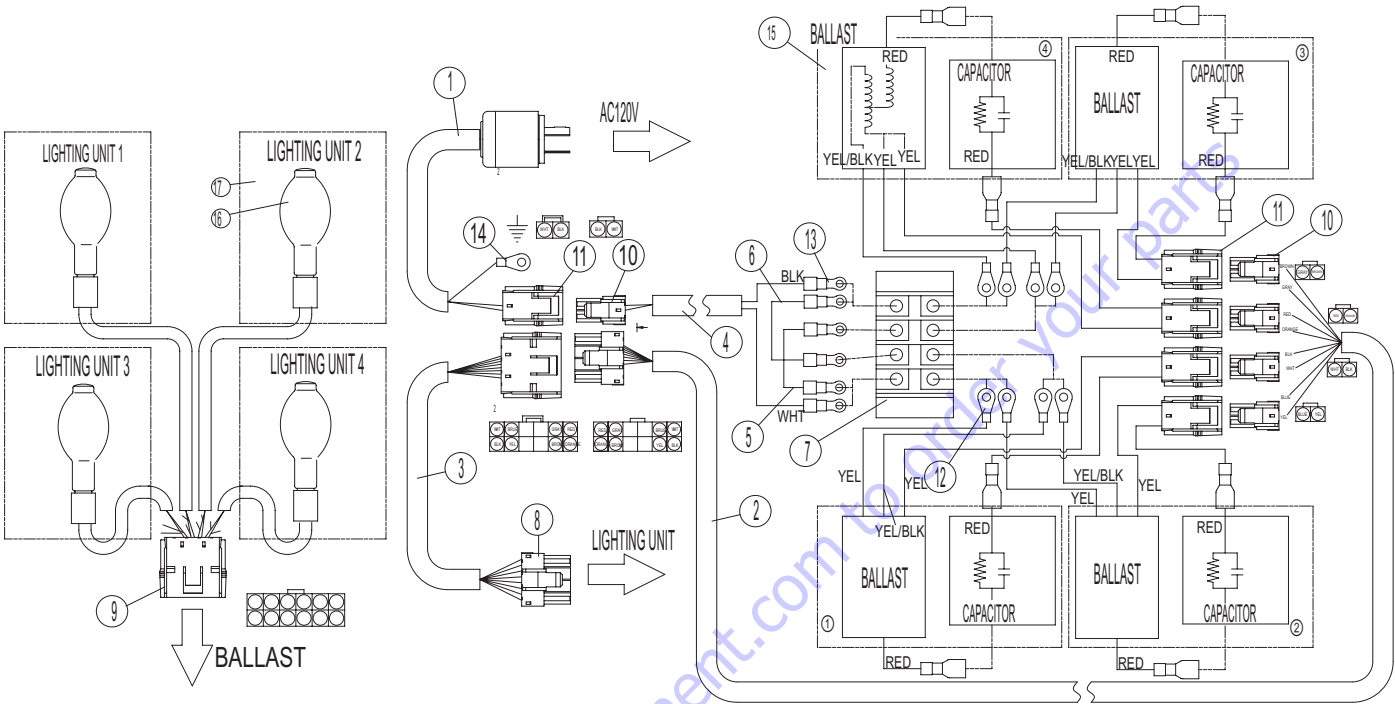
TROUBLESHOOTING

Troubleshooting (Lamps)		
Symptom	Possible Problem	Solution
Lamp does not light.	Are couplers not securely connected?	Connect coupler correctly.
	Is generator lamp switch turned off?	Turn on switch.
	Is lamp loose?	Screw lamp securely into socket.
	Are connectors not properly connected?	Connect disconnected contactor.
	Are any other electric appliances (other than light tower) plugged into power source?	Unplug all other appliances.
	Is generator voltage not normal (non-load voltage - 120 VAC)?	Repair or replace generator.
	Is model of lamp not compatible?	Use genuine MQ lamp.
	Is lamp not cool enough to light again? (Interval of 20 to 30 minutes is required before turning on lamp again)	Wait for lamp to cool down.
Lamp only lights for a short time.	Is generator voltage not normal (non-load voltage - 120 V)?	Repair or replace generator.
	Is ambient temperature too high (more than 104 °F (40 °C)?	Move lamp where there is proper ventilation.

TROUBLESHOOTING

Troubleshooting (Mast)		
Symptom	Possible Problem	Solution
Mast cannot be raised.	Is cable caught in mast?	Set cable free.
	Is end of wire rope disconnected from winch?	Connect wire rope to winch.
	Does surface of mast not slide smoothly?	Apply grease to sliding surface of mast.
	Is winch handle being turned in the wrong direction?	Operate correctly.
Mast keeps coming down.	Is winch latch defective?	Replace part if not functioning properly.
	Is drum shaft loose?	Tighten drum shaft and check its operation.
The mast cannot be lowered.	Does surface of mast not slide smoothly?	Apply grease to sliding surface of mast.
	Is brake disk of winch held tight?	Holding winch handle securely, remove the latch and lower mast slowly (Repair).
	Is safety stopper not working correctly?	Winch up mast a little and lower mast by putting a load on it (Repair).

WIRING DIAGRAM



17	1311001002	LIGHTING UN AY
16	E000031700	LAMP
15	E000069800	BALLAST A (400 W)
14	1367020430	TERMINAL R2-4
13	E000034400	TERMINAL TMEV2-4S
12	E000047600	TERMINAL TMEV1.25-3S
11	E000044800	RECEPTACLE HOUSING 2
10	E000044900	PLUG HOUSING 2
9	1407021030	RECEPTACLE HOUSING 12
8	1407020930	PLUG HOUSING 12
7	E000031600	TERMINAL
6	A400082000	CABLE (JUMPER-BLACK) CP
5	A400081900	CABLE (JUMPER-WHITE) CP
4	A300069900	CABLE (JOINT-43SC-USA) CP
3	A300069501	CABLE (LAMP-43SC-USA) CP
2	A300069601	CABLE (BALLAST-43SC-USA) CP
1	A300069700	CABLE (LAMP-43SC-USA) CP
REF. DESC	PART NUMBER	DESCRIPTION

EXPLANATION OF CODE IN REMARKS COLUMN

The following section explains the different symbols and remarks used in the Parts section of this manual. Use the help numbers found on the back page of the manual if there are any questions.

NOTICE

The contents and part numbers listed in the parts section are subject to change **without notice**. Multiquip does not guarantee the availability of the parts listed.

SAMPLE PARTS LIST

NO.	PART NO.	PART NAME	QTY.	REMARKS
1	12345	BOLT	1	INCLUDES ITEMS W/%
2%		WASHER, 1/4 IN.		NOT SOLD SEPARATELY
2%	12347	WASHER, 3/8 IN. ...	1	MQ-45T ONLY
3	12348	HOSE	A/R	MAKE LOCALLY
4	12349	BEARING	1	S/N 2345B AND ABOVE

NO. Column

Unique Symbols — All items with same unique symbol (@, #, +, %, or >) in the number column belong to the same assembly or kit, which is indicated by a note in the “Remarks” column.

Duplicate Item Numbers — Duplicate numbers indicate multiple part numbers, which are in effect for the same general item, such as different size saw blade guards in use or a part that has been updated on newer versions of the same machine.

NOTICE

When ordering a part that has more than one item number listed, check the remarks column for help in determining the proper part to order.

PART NO. Column

Numbers Used — Part numbers can be indicated by a number, a blank entry, or TBD.

TBD (To Be Determined) is generally used to show a part that has not been assigned a formal part number at the time of publication.

A blank entry generally indicates that the item is not sold separately or is not sold by Multiquip. Other entries will be clarified in the “Remarks” Column.

QTY. Column

Numbers Used — Item quantity can be indicated by a number, a blank entry, or A/R.

A/R (As Required) is generally used for hoses or other parts that are sold in bulk and cut to length.

A blank entry generally indicates that the item is not sold separately. Other entries will be clarified in the “Remarks” Column.

REMARKS Column

Some of the most common notes found in the “Remarks” Column are listed below. Other additional notes needed to describe the item can also be shown.

Assembly/Kit — All items on the parts list with the same unique symbol will be included when this item is purchased.

Indicated by:

“INCLUDES ITEMS W/(unique symbol)”

Serial Number Break — Used to list an effective serial number range where a particular part is used.

Indicated by:

“S/N XXXXX AND BELOW”

“S/N XXXX AND ABOVE”

“S/N XXXX TO S/N XXX”

Specific Model Number Use — Indicates that the part is used only with the specific model number or model number variant listed. It can also be used to show a part is NOT used on a specific model or model number variant.

Indicated by:

“XXXXX ONLY”

“NOT USED ON XXXX”

“Make/Obtain Locally” — Indicates that the part can be purchased at any hardware shop or made out of available items. Examples include battery cables, shims, and certain washers and nuts.

“Not Sold Separately” — Indicates that an item cannot be purchased as a separate item and is either part of an assembly/kit that can be purchased, or is not available for sale through Multiquip.

SUGGESTED SPARE PARTS

GB43SC GLOBUG 4-SPOT

1 to 3 units

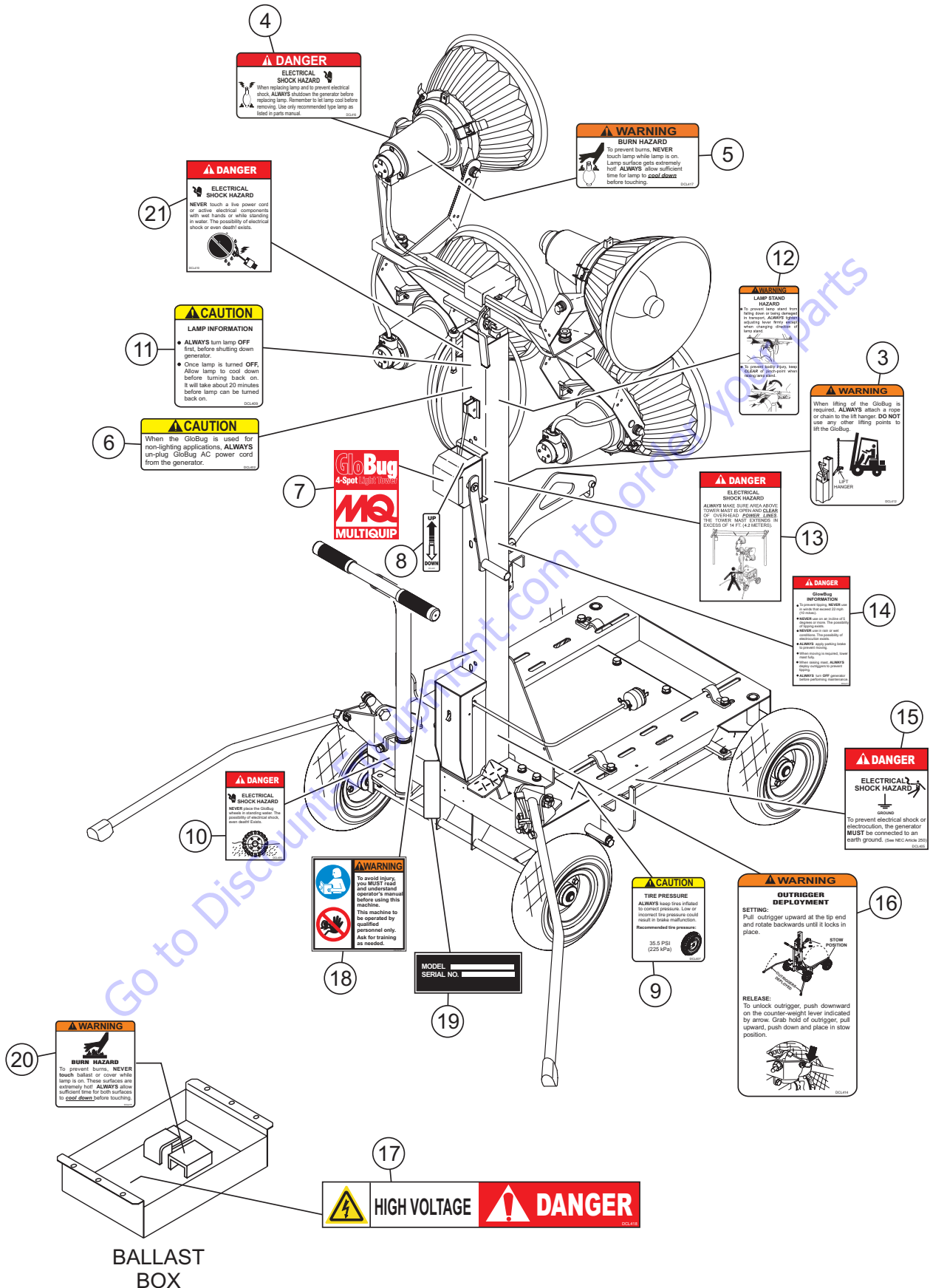
Qty.	P/N	Description
3.....	E000031700	BULB
1.....	A300069800	BALLAST ASSY
1.....	E000032000	CAPACITOR
1.....	1311100161.....	MIRROR/LENS

NOTICE

Part numbers on this Suggested Spare Parts list may supersede/replace the part numbers shown in the following parts lists.

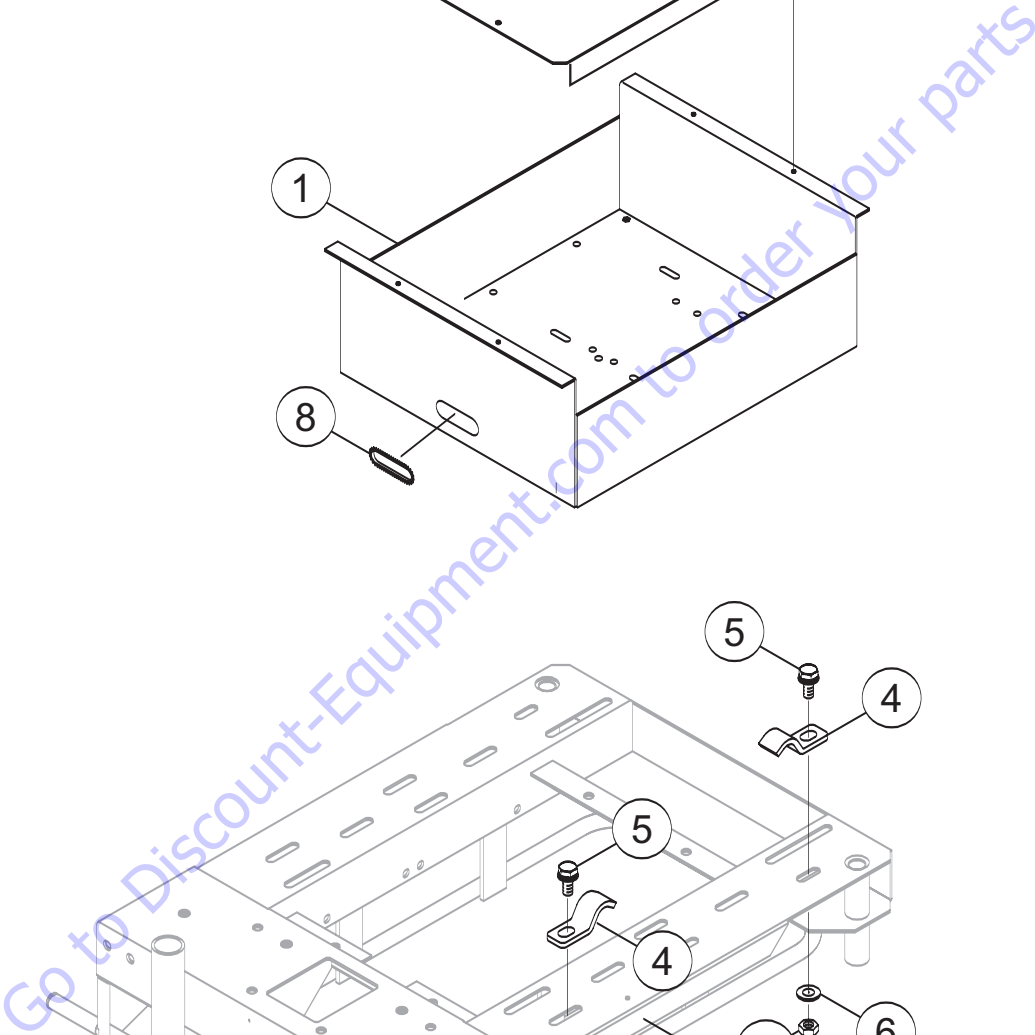
Go to Discount-Equipment.com to order your parts

NAMEPLATES AND DECALS



NAMEPLATES AND DECALS

<u>NO.</u>	<u>PART NO.</u>	<u>PART NAME</u>	<u>QTY.</u>	<u>REMARKS</u>
3	DCL412	DECAL; WARNING, LIFT HANGER	1	
4	DCL416	DECAL; DANGER, ELECTRICAL SHOCK HAZ.	1	
5	DCL417	DECAL; WARNING, BURN HAZARD (LAMP)	1	
6	DCL402	DECAL; CAUTION, REMOVE POWER CORD	1	
7	DCL428A	DECAL; MQ LOGO	1	
8	DCL401	DECAL; WINCH UP/DOWN	1	
9	DCL407	DECAL; CAUTION, TIRE PRESSURE	1	
10	DCL400	DECAL; DANGER, ELECTRICAL SHOCK (TIRES)	1	
11	DCL409	DECAL; CAUTION, LAMP INFORMATION	1	
12	DCL406A	DECAL; WARNING, ADJ. LEVER HAZARD	1	
13	DCL403A	DECAL; DANGER ELECTRIC SHOCK (GLOBUG)	1	
14	DCL411	DECAL; DANGER, GLOBUG INFORMATION	1	
15	DCL405	DECAL; DANGER, ELECTRICAL SHOCK (GND)	1	
16	DCL414	DECAL; WARNING, OUTRIGGER DEPLOYMENT	1	
17	DCL418	DECAL; DANGER, HIGH VOLTAGE	1	
18	35137	DECAL; WARNING, READ MANUAL	1	
19		NAMEPLATE.....	1CONTACT MQ PARTS DEPT.
20	DCL415	DECAL; BURN HAZARD (BALLAST)	1	
21	DCL410	DECAL; DANGER, ELECTRICAL SHOCK (CORDS)	1	

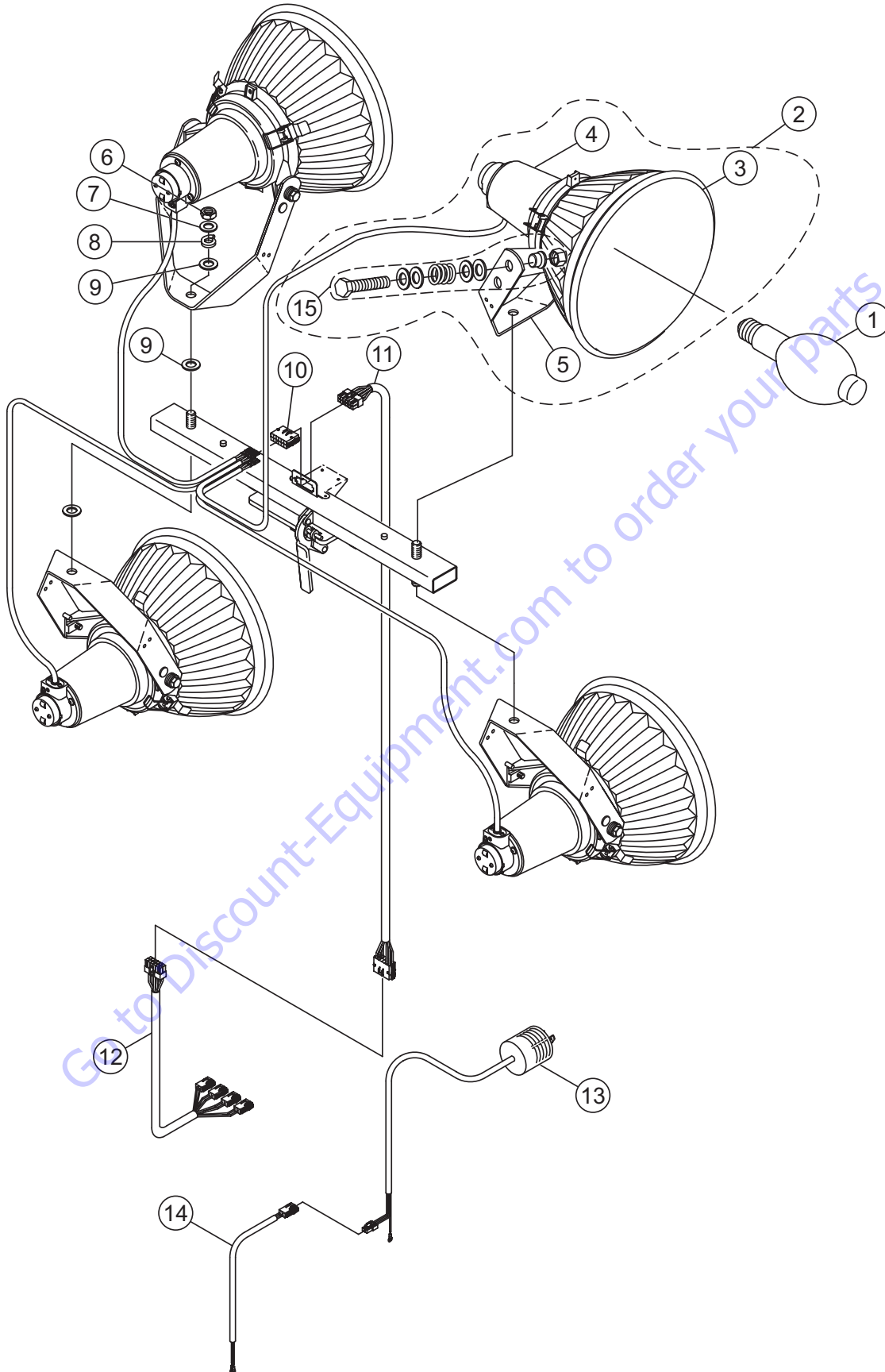


BASE PLATE ASSY.

<u>NO.</u>	<u>PART NO.</u>	<u>PART NAME</u>	<u>QTY.</u>	<u>REMARKS</u>
1	A100030203	BOX (BALLAST) CP	1.....	REPLACES P/N A100030201
2	A100030101	COVER (BALLAST)	1.....	REPLACES P/N A100030100
3	0010510025	BOLT AND WASHER (M10 X 25)	4	
4	A400041101	STOPPER.....	4.....	REPLACES P/N A400041100
5	0010512025	BOLT AND WASHER (M12 X 25)	4	
6	0043112000	WASHER (M12)	4	
7	0033112000	NUT (M12)	4	
8	E000032100	FREE BRUSH	1	
9	0013106010	BOLT (M6 X 10)	1	

Go to Discount-Equipment.com to order your parts

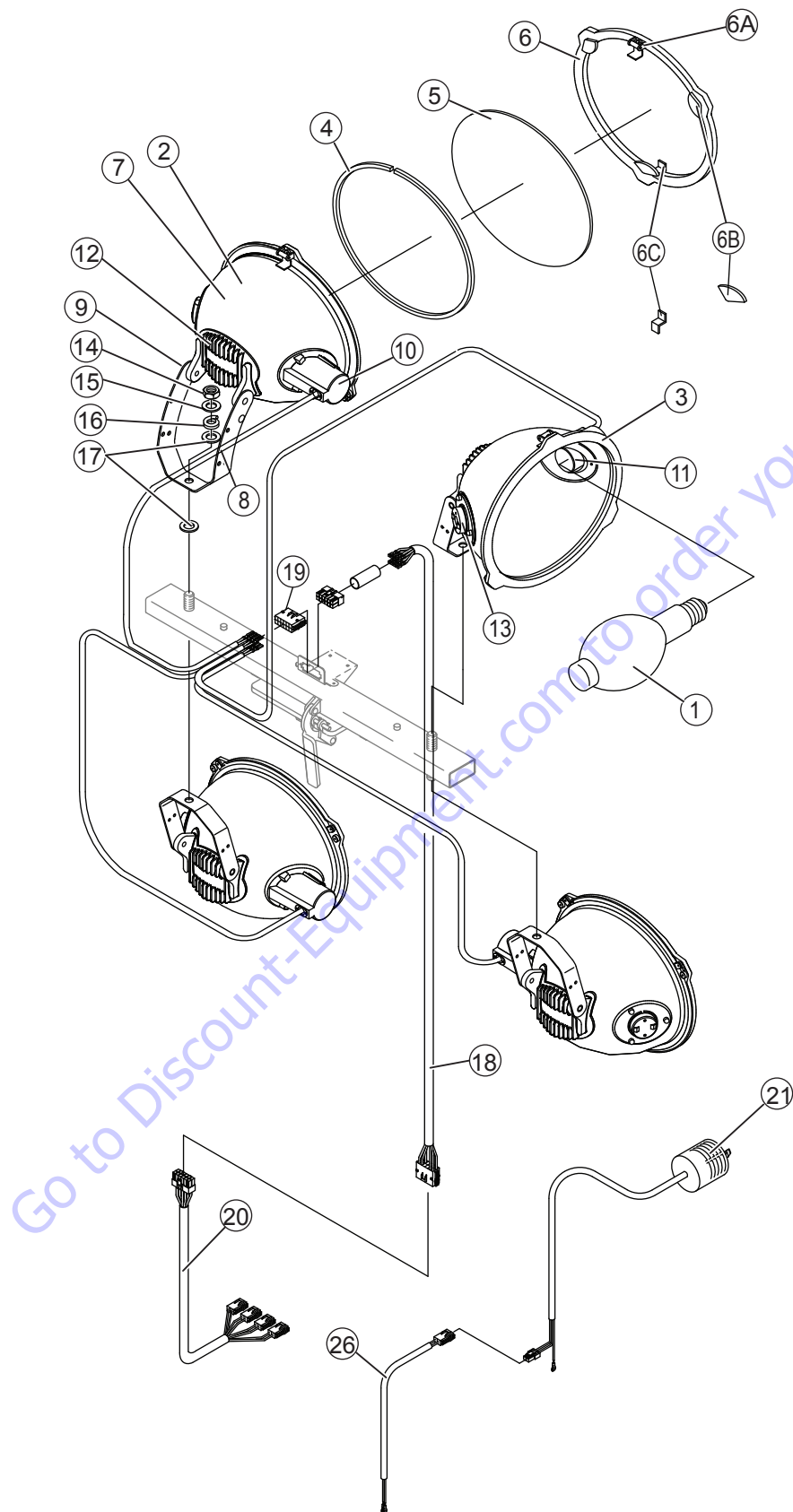
ELECTRICAL ASSY. — ROUND LAMP (S/N G5000086 AND BELOW)



ELECTRICAL ASSY. — ROUND LAMP (S/N G5000086 AND BELOW)

<u>NO.</u>	<u>PART NO.</u>	<u>PART NAME</u>	<u>QTY.</u>	<u>REMARKS</u>
1	E000031700	LAMP	4	
2	E000048100	LIGHTING UNIT ASSY	4	INCLUDES ITEMS W/ #
3#	1311100161	MIRROR/LENS	4	
4#	1311300161	LIGHT SOURCE TUBE	4	
5#	1311200162	ARM (LIGHTING UNIT)	4	
6	0031116000	NUT (M16)	4	
7	0040116000	WASHER (M16)	4	
8	1042000230	SPRING	4	
9	1502180110	WASHER	8	
10	1407021030	RECEPTACLE HOUSING	1	
11	A300069501	CABLE (LAMP) CP	1	REPLACES P/N A300069500
12	A300069601	CABLE (BALLAST) CP	1	REPLACES P/N A300069600
13	A300069700	CABLE (MAIN) CP	1	
14	A300069900	CABLE (JOINT) CP	1	
15#	E000012300	BOLT SET, CHR-50	8	

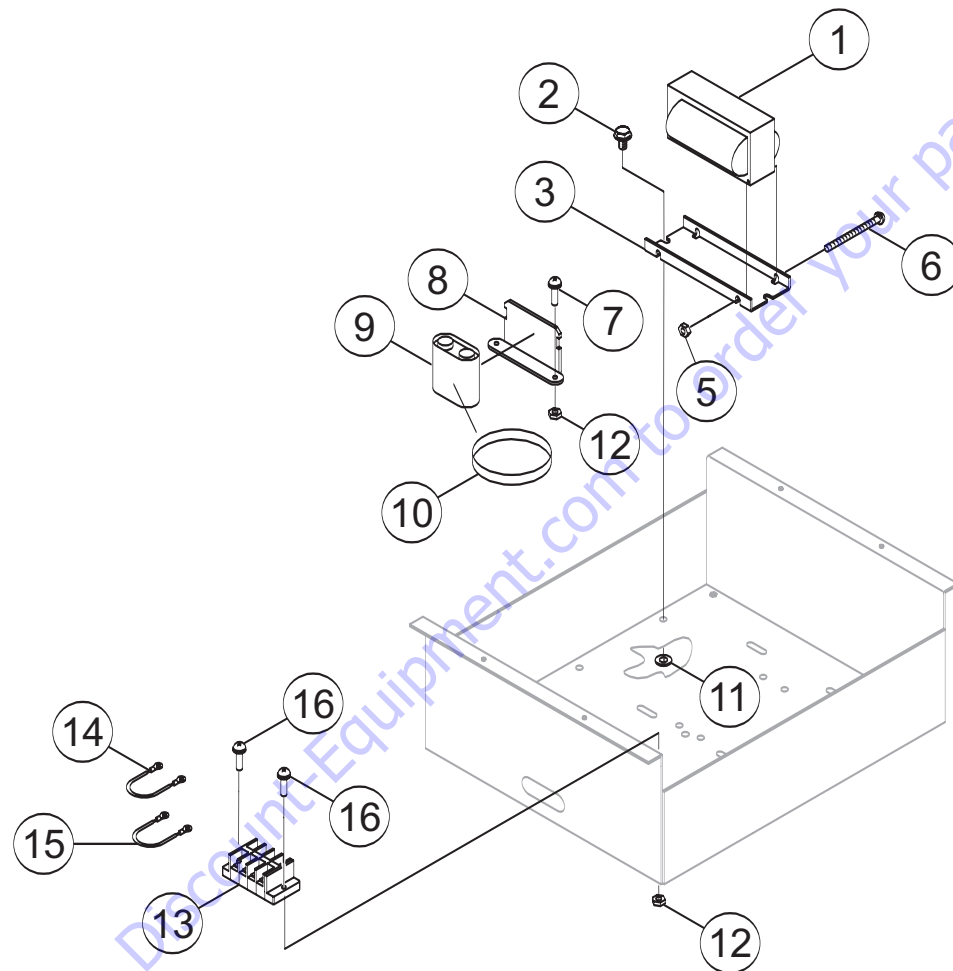
ELECTRICAL ASSY. — OVAL LAMP (S/N G5000087 AND ABOVE)



ELECTRICAL ASSY. — OVAL LAMP (S/N G5000087 AND ABOVE)

<u>NO.</u>	<u>PART NO.</u>	<u>PART NAME</u>	<u>QTY.</u>	<u>REMARKS</u>
1	E000112100	LAMP	4	
2	E000043101	LIGHTING UNIT L ASSY	2.....	INCLUDES ITEMS W/ #
3	E000043201	LIGHTING UNIT R ASSY	2.....	INCLUDES ITEMS W/ #
4#	E000045200	SEAL (PACKING)	4	
5#	E000045100	FRONT GLASS	4	
6#	E000045500	FRONT STOPPER.....	4.....	INCLUDES ITEMS W/ &
6A&	E000048300	HINGE SET	4	
6B&	E000048400	CRESCENT	12	
6C&	E000048500	GLASS STOPPER	12	
7#	E000045300	MIRROR	4	
8#	E000045400	ARM (LIGHTING UNIT)	4	
9#	E000048600	BOLT SET	8	
10#	E000048700	SOCKET BRACKET	4	
11#	E000009600	SOCKET	4	
12#	E000048800	FIN BRACKET	4	
13#	E000048900	FILTER	4	
14	0034116000	NUT (M16)	4	
15	0043116000	WASHER (M16)	4	
16	1042000230	SPRING	4	
17	1502180110	WASHER	8	
18	A300069502	CABLE (LAMP) CP	1	
19	1407021030	RECEPTACLE HOUSING	1	
20	A300069602	CABLE (BALLAST) CP	1	
21	A300069700	CABLE (MAIN) CP	1	
26	A300069900	CABLE (JOINT) CP	1	

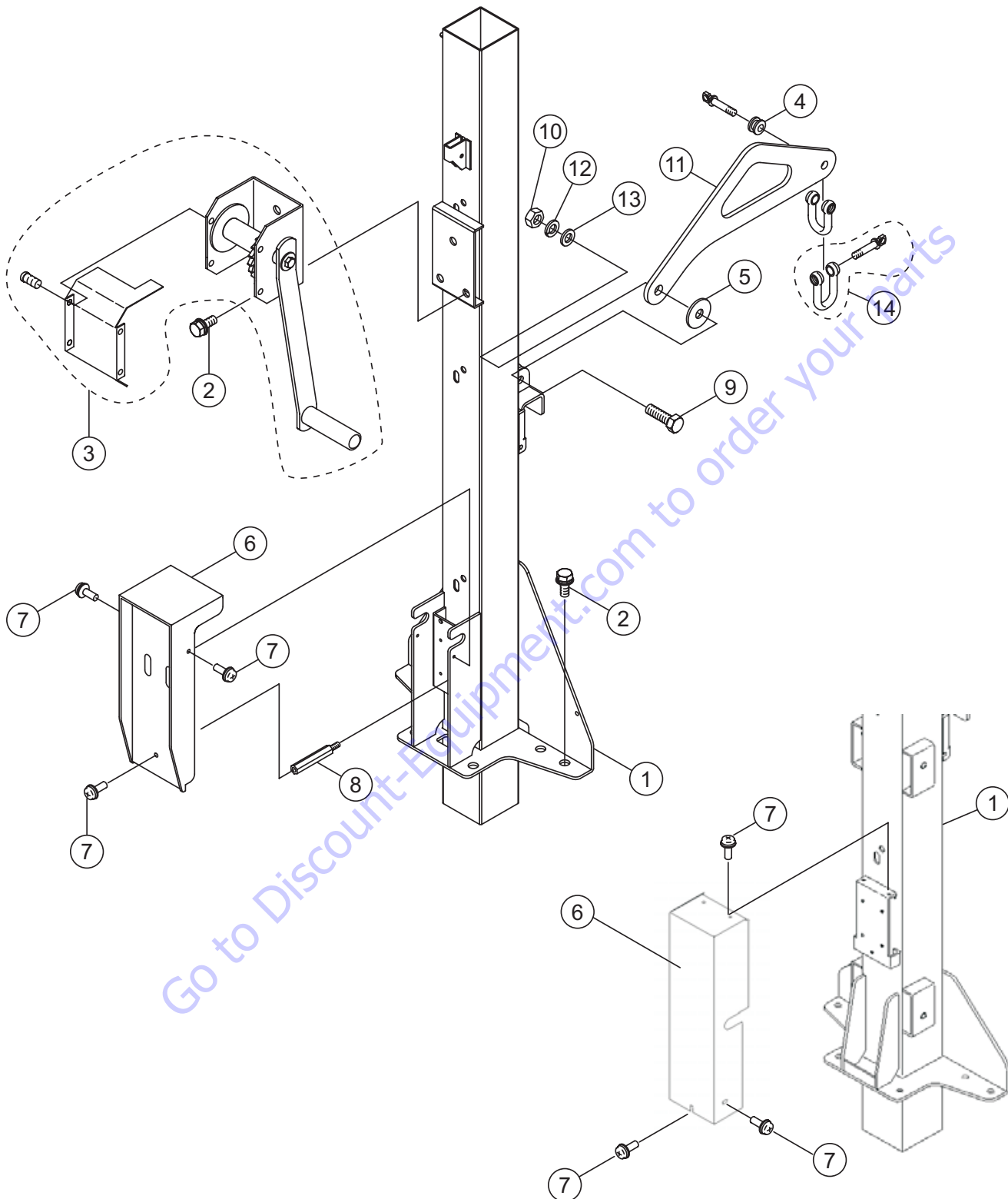
BALLAST ASSY.



BALLAST ASSY.

<u>NO.</u>	<u>PART NO.</u>	<u>PART NAME</u>	<u>QTY.</u>	<u>REMARKS</u>
1	A300069800	BALLAST ASSY	4	
2	0013505015	BOLT AND WASHER (M5 X 15).....	8.....	REPLACES P/N 0010506025
3	A300060801	HOLDER (BALLAST).....	4.....	REPLACES P/N A300060800
5	0033105000	NUT (M5)	16	
6	0020305065	SCREW AND WASHER (M5 X 65)	8	
7	0020304012	SCREW AND WASHER (M4 X 12)	4	
8	A400078900	HOLDER (CAPACITOR)	2	
9	E000032000	CAPACITOR	4	
10	E000031800	CLAMP	4	
11	0043105000	WASHER (M5)	16	
12	0033104000	NUT (M4)	6	
13	E000031600	TERMINAL	1	
14	A400081900	CABLE (JUMPER-W)	1	
15	A400082000	CABLE (JUMPER-B)	1	
16	0023104020	SCREW (M4 X 20)	2	

MAIN MAST ASSY.

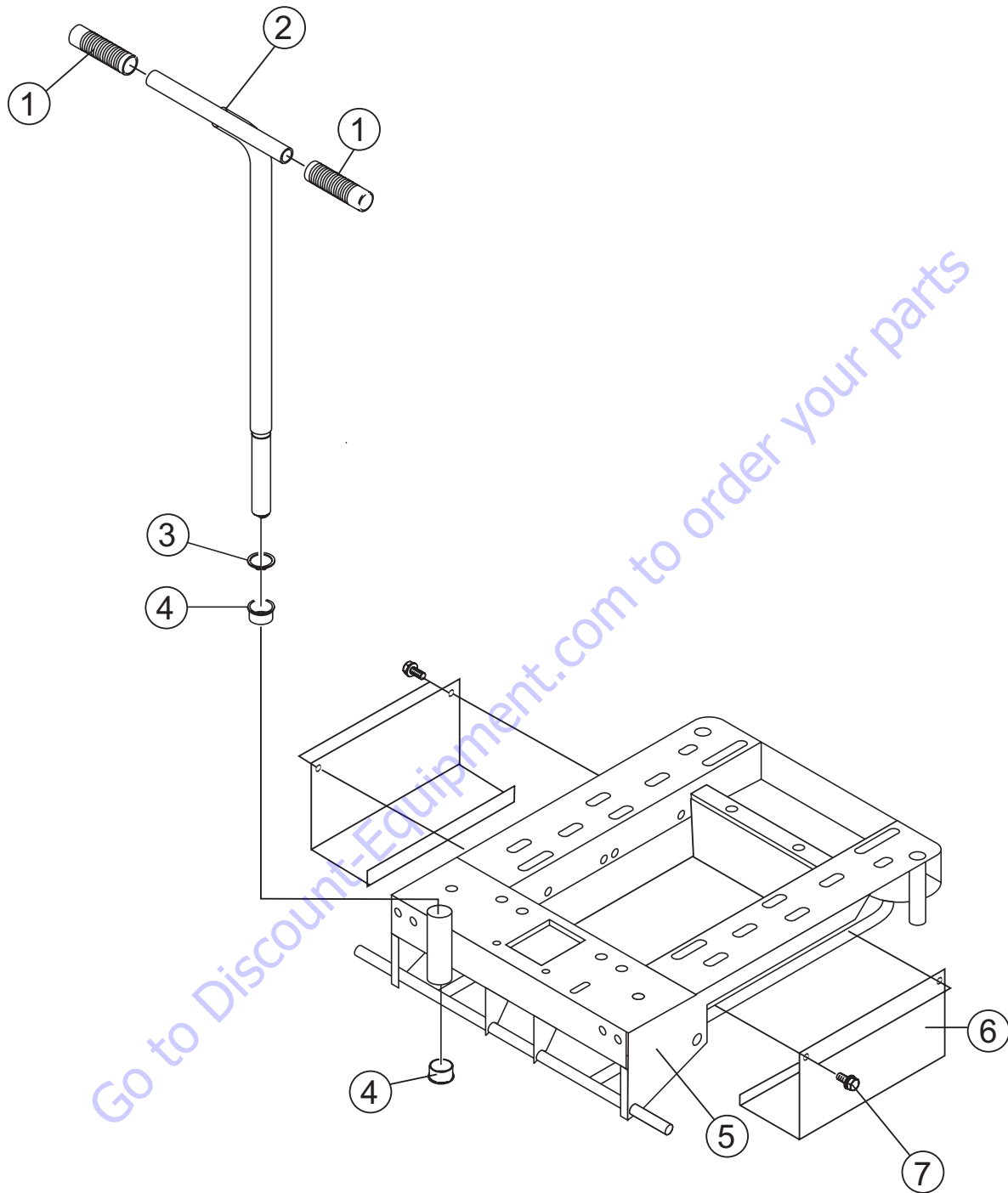


SERIAL NOS. G5000029 AND ABOVE

MAIN MAST ASSY.

<u>NO.</u>	<u>PART NO.</u>	<u>PART NAME</u>	<u>QTY.</u>	<u>REMARKS</u>
1	A100028102	FIRST MAST.....	1.....	S/N G5000028 AND BELOW
1	A100028105	FIRST MAST.....	1.....	S/N G5000029 AND ABOVE
2	0013512025	BOLT AND WASHER (M12 x 25)	9	
3	1011000701	WINCH HM-G103	1	
4	1642001430	GROMMET	1	
5	0043112041	WASHER (12Dx40Dx3.2T)	1	
6	A200029800	SWITCH COVER	1.....	S/N G5000028 AND BELOW
6	A200036501	SWITCH COVER	1.....	S/N G5000029 AND ABOVE
7	0020334012	SCREW AND WASHER (M4 x 12)	3.....	S/N G5000028 AND BELOW
7	0020334012	SCREW AND WASHER (M4 x 12)	5.....	S/N G5000029 AND ABOVE
8	2002500430	BOLT (SUPPORT) (MK-440)	1.....	S/N G5000028 AND BELOW
9	0013112040	BOLT (M12 x 40)	1	
10	0033112000	NUT (M12)	1	
11	1052001710	HANGER	1	
12	0043212000	SPRING WASHER (M12)	1	
13	0043112000	WASHER (M12)	1	
14	1711080130	SHACKLE	2	

T-HANDLE ASSY.

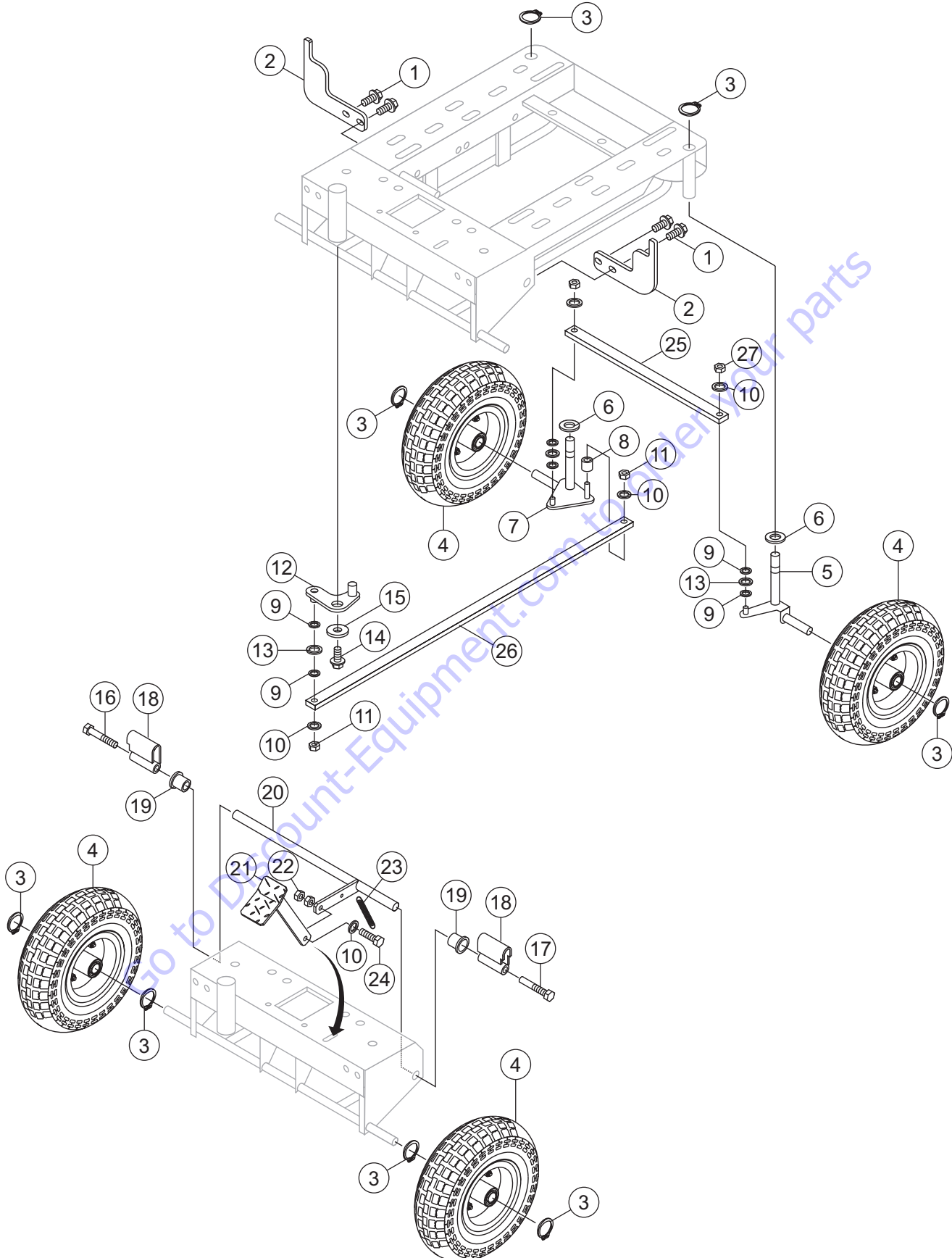


T-HANDLE ASSY.

<u>NO.</u>	<u>PART NO.</u>	<u>PART NAME</u>	<u>QTY.</u>	<u>REMARKS</u>
1	1102700130	HANDLE GRIP	2	
2	A200023001	HANDLE	1	
3	0040730000	SNAP RING (30)	1	
4	1503300130	SLEEVE BEARING (30Dx34Dx20)	2	
5	A100018906	BASE PLATE	1.....	REPLACES P/N A100018903
6	A300087403	SIDE GUARD.....	2.....	S/N G5000029 AND ABOVE
7	0013508015	BOLT AND WASHER.....	4.....	S/N G5000029 AND ABOVE

Go to Discount-Equipment.com to order your parts

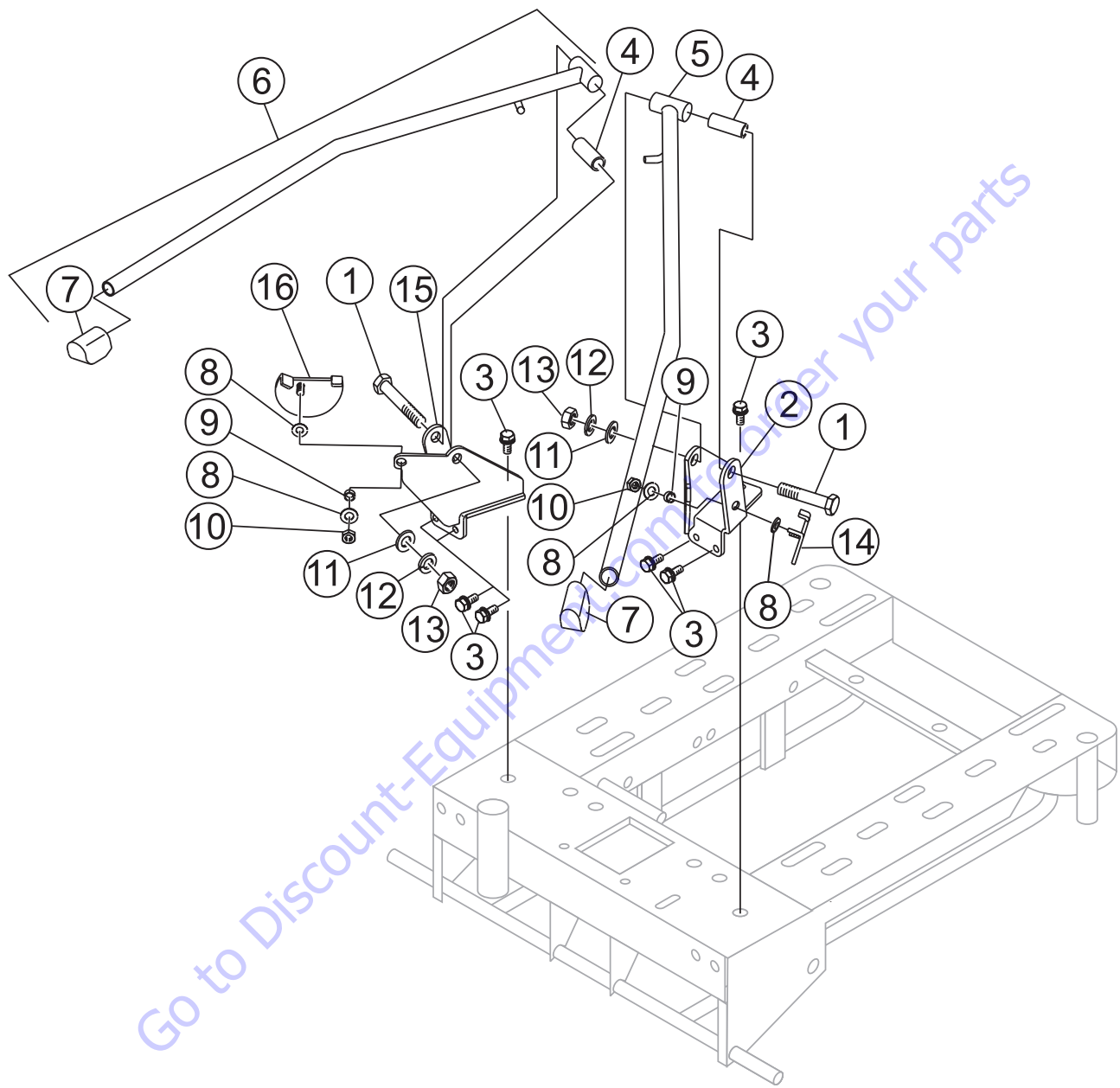
STEERING ASSY.



STEERING ASSY.

<u>NO.</u>	<u>PART NO.</u>	<u>PART NAME</u>	<u>QTY.</u>	<u>REMARKS</u>
1	0013510025	BOLT AND WASHER (M10X25)	10	
2	A400033402	CATCHER (OUTRIGGER)	2	
3	0040720000	SNAP RING (20)	8	
4	E000014500	TIRE ASSY (4.10/3.50-5)	4	
5	A200022803	FRONT SHAFT (R)	1	
6	E000031200	WASHER (20Dx36Dx1.5)	2	
7	A200022903	FRONT SHAFT (L)	1	
8	A400055101	SPACER	1	
9	1504120130	WASHER (12.5Dx18Dx0.5T)	8	
10	0043108000	WASHER (M8)	5	
11	0033208000	SELF-LOCK NUT (M8)	3	
12	A300090600	LINK (HANDLE)	1	REPLACES P/N A300046003
13	0043112000	WASHER (M12)	1	
14	0013512025	BOLT AND WASHER (M12x25)	1	
15	0043112041	WASHER (12Dx40Dx3.2T)	1	
16	1521120131	BOLT (M12x75) LEFT SCREW	1	
17	0013212075	BOLT (M12x75)	1	
18	2071214010	BRAKE	2	
19	1503180130	SLEEVE BEARING (18Dx20Dx20)	2	
20	2071213211	BRAKE SHAFT	1	
21	2001200313	BRAKE PEDAL	1	
22	0033108000	NUT (M8)	2	
23	1041000131	SPRING (BRAKE)	1	
24	0010308030	BOLT (M8x30) SUS	1	
25	A400055501	LINK (FRONT SHAFT)	1	
26	A400055401	LINK (STEERING)	1	
27	0030808000	PUSH NUT (8)	3	

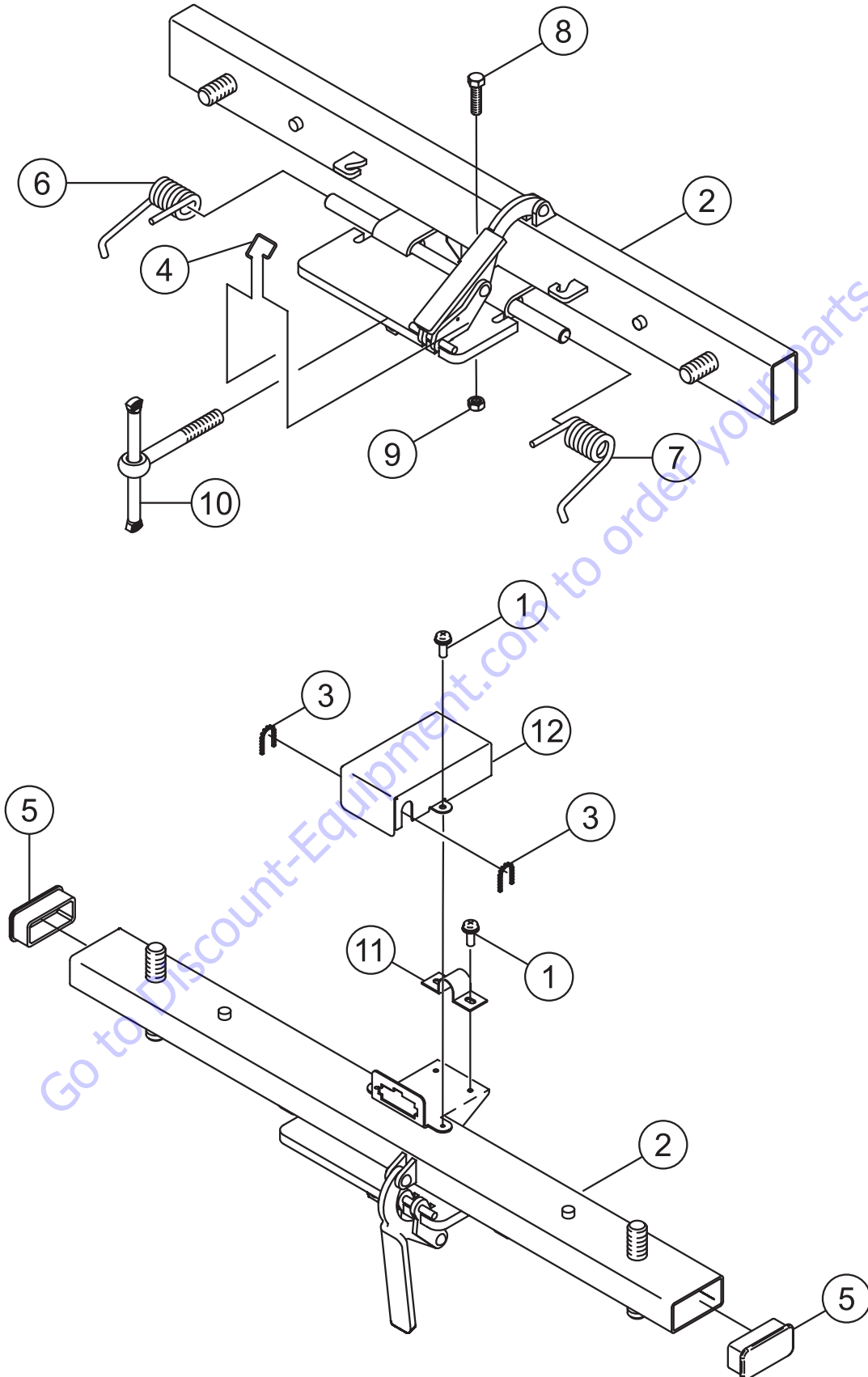
OUTRIGGER ASSY.



OUTRIGGER ASSY.

<u>NO.</u>	<u>PART NO.</u>	<u>PART NAME</u>	<u>QTY.</u>	<u>REMARKS</u>
1	0013116090	BOLT (M16x90)	2	
2	A100011601	BRACKET (OUT, R) R	1	
3	0013510025	BOLT & WASHER (M10x25)	10	
4	1501160111	SPACER (OUT, R)	2	
5	A200015302	OUTRIGGER R.....	1.....	INCLUDES ITEM W/ *
6	A200015202	OUTRIGGER L	1.....	INCLUDES ITEM W/ *
7*	1641000330	RUBBER FOOT	2	
8	0043110000	WASHER (M10)	4	
9	1501100430	SPACER (10.2Dx13.8Dx6.5L)	2	
10	0033210000	SELF LOCK NUT (M10)	2	
11	0043116000	WASHER (M16)	2	
12	0043216000	SPRING WASHER (M16)	2	
13	0033116000	NUT (M16)	2	
14	2031321113	WEIGHT (OUT, R) R	1	
15	A100011501	BRACKET (OUT, R) L	1	
16	2031320213	WEIGHT (OUT, R) L	1	

MAST ADAPTER ASSY.

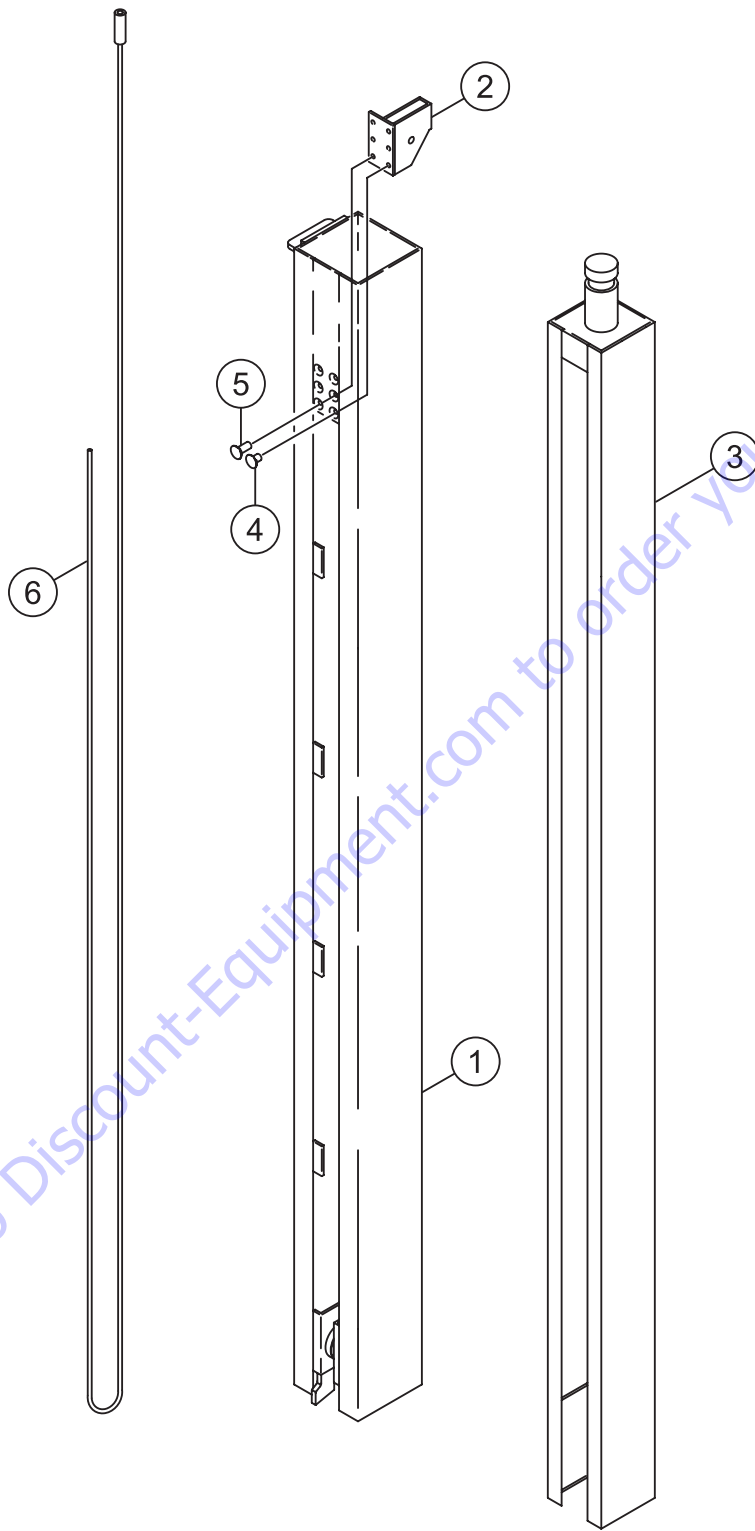


MAST ADAPTER ASSY.

<u>NO.</u>	<u>PART NO.</u>	<u>PART NAME</u>	<u>QTY.</u>	<u>REMARKS</u>
1	0023304012	SCREW & WASHER (M4 X 12)	4	
2	2202350110	LAMP STAND CP (ROUND LAMP)	1	S/N G5000086 AND BELOW
2	A100030804	LAMP STAND CP (OVAL LAMP)	1	S/N G5000087 AND ABOVE
3	1643000110	FREE BUSH	2	
4	1045000130	SPRING (LEVER)	1	
5	1652000131	CAP	2	
6	1043001230	SPRING (LAMP STAND) L	1	
7	1043001330	SPRING (LAMP STAND) R	1	
8	0010308030	BOLT (M8 X 30)	1	
9	0033108000	NUT (M8)	4	
10	2072310113	ADJUST LEVER (LAMP STAND)	1	
11	1603000130	CLAMP	1	
12	2072400510	CONNECTOR COVER	1	

Go to Discount-Equipment.com to order your parts

MAST SECTION ASSY.



MAST SECTION ASSY.

<u>NO.</u>	<u>PART NO.</u>	<u>PART NAME</u>	<u>QTY.</u>	<u>REMARKS</u>
1	A200027200	SECOND MAST	1	
2	2002262010	BRACKET (PULLEY)	1	MAST SECTION 2
3	A200027301	THIRD MAST	1	REPLACES P/N A200027300
4	0023204006	SCREW (M4x6)	6	
5	0023204010	SCREW (M4x10)	6	
6	1031040113	WIRE ROPE (4Dx4800L)	1	

Go to Discount-Equipment.com to order your parts

PARTS FINDER

**Search Website
by Part Number**



**Search Manual
Library For Parts
Manual & Lookup Part
Numbers – Purchase
or Request Quote**

Search Manuals

Enter part number or model number to search for parts manual.

* Part #

* Model

Serial

Part Number

Comments

**Can't Find Part or
Manual? Request Help
by Manufacturer,
Model & Description**

Parts Order Form

Please fill in the following information:

Manufacturer

Model

Description

Quantity

Part Number

Part Name

Part Description

Part Location

Part Condition

Part Status

Part Location

Part Condition

Part Status

Part Location

Part Condition

Part Status

Discount-Equipment.com is your online resource for quality parts & equipment.

Florida: **561-964-4949** Outside Florida TOLL FREE: **877-690-3101**

Need parts?

Click on this link: <http://www.discount-equipment.com/category/5443-parts/> and choose one of the options to help get the right parts and equipment you are looking for. Please have the machine model and serial number available in order to help us get you the correct parts. If you don't find the part on the website or on one of the online manuals, please fill out the request form and one of our experienced staff members will get back to you with a quote for the right part that your machine needs.

We sell worldwide for the brands: Genie, Terex, JLG, MultiQuip, Mikasa, Essick, Whiteman, Mayco, Toro Stone, Diamond Products, Generac Magnum, Airman, Haulotte, Barreto, Power Blanket, Nifty Lift, Atlas Copco, Chicago Pneumatic, Allmand, Miller Curber, Skyjack, Lull, Skytrak, Tsurumi, Husquvarna Target, , Stow, Wacker, Sakai, Mi-T- M, Sullair, Basic, Dynapac, MBW, Weber, Bartell, Bennar Newman, Haulotte, Ditch Runner, Menegotti, Morrison, Contec, Buddy, Crown, Edco, Wyco, Bomag, Laymor, Barreto, EZ Trench, Bil-Jax, F.S. Curtis, Gehl Pavers, Heli, Honda, ICS/PowerGrit, IHI, Partner, Imer, Clipper, MMD, Koshin, Rice, CH&E, General Equipment, ,AMida, Coleman, NAC, Gradall, Square Shooter, Kent, Stanley, Tamco, Toku, Hatz, Kohler, Robin, Wisconsin, Northrock, Oztec, Toker TK, Rol-Air, Small Line, Wanco, Yanmar

OPERATION AND PARTS MANUAL

HERE'S HOW TO GET HELP

PLEASE HAVE THE MODEL AND SERIAL
NUMBER ON-HAND WHEN CALLING

Go to Discount-Equipment.com to order your parts



www.Discount-Equipment.com

