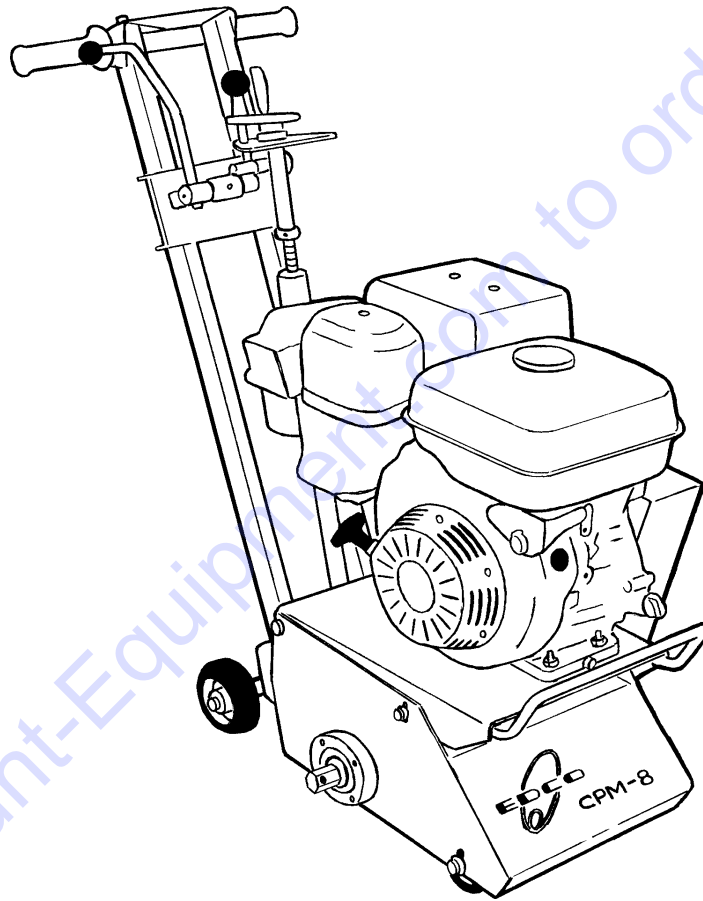


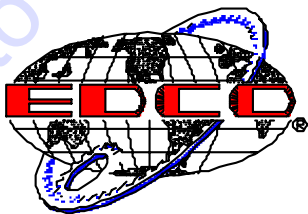
REVISED AUGUST 1998
STARTING SERIAL #11800

COMPACT PLANER

PARTS LIST MANUAL



Model CPM-8



1

**Discount
Equipment**

PARTS FINDER

**Search Website
by Part Number**



**Search Manual
Library For Parts
Manual & Lookup Part
Numbers – Purchase
or Request Quote**

Search Manuals

Enter your information to help us find the right parts manual for your machine.

* Brand:

* Model:

* Serial:

* Part Number:

SEARCH

**Can't Find Part or
Manual? Request Help
by Manufacturer,
Model & Description**

Parts Order Form

Please fill in the following information to help us find the right part for your machine.

Manufacturer:	<input type="text"/>
Model:	<input type="text"/>
Description:	<input type="text"/>
Part Number:	<input type="text"/>
Quantity:	<input type="text"/>
Notes:	<input type="text"/>

Discount-Equipment.com is your online resource for quality parts & equipment.

Florida: **561-964-4949** Outside Florida TOLL FREE: **877-690-3101**

Need parts?

Click on this link: <http://www.discount-equipment.com/category/5443-parts/> and choose one of the options to help get the right parts and equipment you are looking for. Please have the machine model and serial number available in order to help us get you the correct parts. If you don't find the part on the website or on one of the online manuals, please fill out the request form and one of our experienced staff members will get back to you with a quote for the right part that your machine needs.

We sell worldwide for the brands: Genie, Terex, JLG, MultiQuip, Mikasa, Essick, Whiteman, Mayco, Toro Stone, Diamond Products, Generac Magnum, Airman, Haulotte, Barreto, Power Blanket, Nifty Lift, Atlas Copco, Chicago Pneumatic, Allmand, Miller Curber, Skyjack, Lull, Skytrak, Tsurumi, Husquvarna Target, Stow, Wacker, Sakai, Mi-T-M, Sullair, Basic, Dynapac, MBW, Weber, Bartell, Bennar Newman, Haulotte, Ditch Runner, Menegotti, Morrison, Contec, Buddy, Crown, Edco, Wyco, Bomag, Laymor, EZ Trench, Bil-Jax, F.S. Curtis, Gehl Pavers, Heli, Honda, ICS/PowerGrit, IHI, Partner, Imer, Clipper, MMD, Koshin, Rice, CH&E, General Equipment, Amida, Coleman, NAC, Gradall, Square Shooter, Kent, Stanley, Tamco, Toku, Hatz, Kohler, Robin, Wisconsin, Northrock, Oztec, Toker TK, Rol-Air, APT, Wylie, Ingersoll Rand / Doosan, Innovatech, Con X, Ammann, Mecalac, Makinex, Smith Surface Prep, Small Line, Wanco, Yanmar

**READ AND UNDERSTAND THE INSTRUCTIONS THOROUGHLY BEFORE ATTEMPTING TO OPERATE THIS EQUIPMENT.**

Death or serious injury could occur if the machine is used improperly.

**WARNING**

The engine exhaust from this product contains chemicals known to the State of California to cause cancer, birth defects or other reproductive harm.

**SAFETY MESSAGE**

The safety instructions are preceded by a graphic alert message of DANGER, WARNING or CAUTION.



A safety instruction that advises that death or serious injury will result if instructions are not followed and caution exercised.



A safety instruction that advises that death or serious injury can result if instructions are not followed and caution exercised.



A safety instruction that advises that injury could result if instructions are not followed.

GASOLINE POWERED EQUIPMENT

The engine exhaust from this product contains chemicals known, in certain quantities, to cause cancer, birth defects or other reproductive harm.



Do not operate gasoline powered equipment without adequate ventilation. Carbon monoxide is an invisible, odorless gas that can kill.

**ELECTRIC POWERED EQUIPMENT**

ELECTRICAL HAZARD - Be sure equipment is properly grounded. Failure to comply could kill or result in serious injury.

**GENERAL SAFETY PRECAUTIONS**

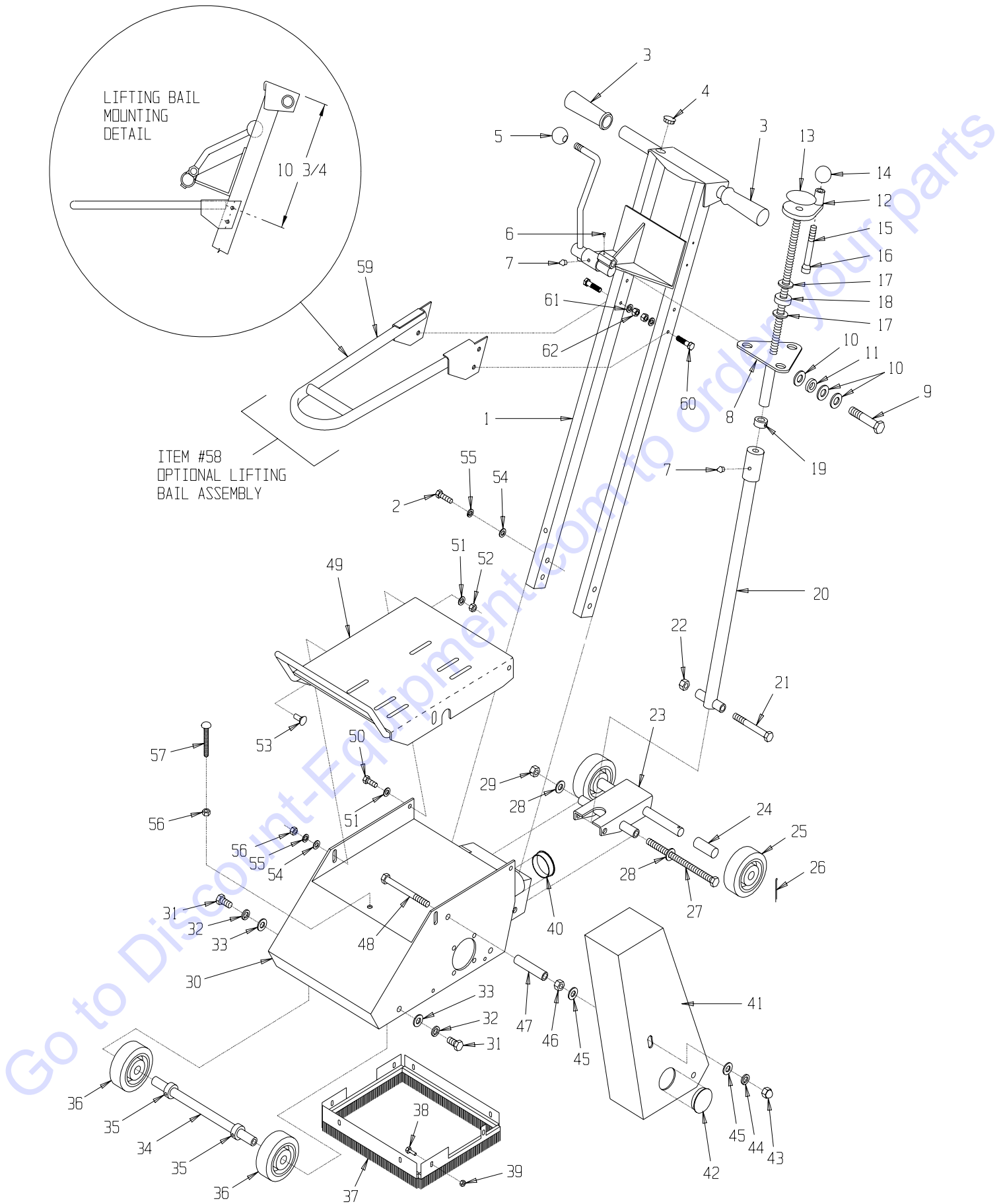
1. You must read and understand the operators instruction manual and all other manuals associated with this machine. For your safety and the safety of others around you, it is extremely important to fully understand how to operate this machine in the way it was intended. Different model machines or older/newer versions of the same model may have different parts and controls that you need to understand. If instructions are not readable or available DO NOT USE this machine and contact Discount-equipment for a replacement Manual.
2. You must be able to physically handle the bulk weight and power of this machine. If not properly controlled this machine can cause death or serious injury.
3. Do not operate this machine in an impaired mental state. You must be able to exercise good judgement and reactions to maintain a safe working environment.
4. This is a "one person" machine which means only one operator may be operating the machine at any one time. For the safety of others, maintain a safe operating distance to other personnel. Your work area should be defined and appropriately marked so bystanders and coworkers do not wonder near this machine and end up seriously injured by flying debris or exposing them to harmful noise or dust.
5. This equipment is for Commercial use. Although this is a "one person" machine your work team should understand how to shut this machine off and quickly get medical help if an accident strikes the operator.
6. Keep all guards in place during operation. The guards are in place to help protect from inadvertent contact with something dangerous like a pinch point or hot surface.
7. Wear appropriate Personal Protective Equipment (PPE) including safety glasses, safety boots, work gloves, respiratory protection (when required), hearing protection, and head protection.
Do not wear loose clothing that can get tangled in moving parts. Failure to do so could result in dismemberment or death. **Wear an approved respirator when removing hazardous materials or when grinding/cutting dry materials. Some dust particles such as concrete dust can contain silicate particles which can cause silicosis (a very serious lung disease). Contact NIOSH or OSHA for further details.**
When wet grinding/cutting, avoid contact with the concrete/Asphalt slurry which can cause a serious skin irritation.
8. You must maintain this machine per the maintenance schedule in the operator manual. Remember before adjusting, servicing, or fueling this machine, disconnect the source of power to the machine by disconnecting the spark plug (Gas/diesel models), or by unplugging the electrical power cord (electric models) or air hose (Pneumatic models) AT THE MACHINE so you can assure yourself it remains unplugged while you are working on it. Do not modify this machine. Use only genuine EDCO parts and accessories. Repairs and service should be performed by approved EDCO dealers or authorized technicians.
9. You should look carefully around the area before you begin work so you can identify potential hazards such as deck inserts, pipes, columns, openings, electrical cords or outlets, or any other objects protruding from the slab surface.
10. This machine has no brain so you must use your own. There is no substitute for safety. The safety decals on the machine are to serve as a reminder for information you must already know before you begin using this machine. Take a moment to reread the safety decals each time you use the machine. If your machine is missing any decals, contact Discount-equipment for a replacement.

EDCO Model CPM-8, "COMPACT PLANER"

TABLE OF CONTENTS

- 1- Instructions and General Safety Precautions**
- 2 - Information Page (Table of Contents)**
- 3 - EDCO Model CPM-8,"COMPACT PLANER", Illustration 1: Frame Assembly**
- 4 - Parts Listing - Illustration 1: Frame Assembly**
- 5 - Illustration/Parts Listing 2: Drum Shaft and Bearings**
- 6 - Illustration/Parts Listing 3: Engine and Belt Drive Assembly**
- 7 - Illustration 4: Motor Belt Drive Assembly**
- 8 - Parts Listing - Illustration 4: Motor Belt Drive Assembly**
- 9 - Illustration/Parts Listing 5: Cutter Wheel Drum Assembly (Standard)**
- 10 - Illustration/Parts Listing 6: Roto-Peen Flap/Hub Assembly (Standard)**
- 11 - Illustration/Parts Listing 7: Diamond Grooving Head Assembly (Standard)**
- 12 - Illustration/Parts Listing 8: Optional Edger Assembly**
- 13 - Illustration/Parts Listing 9: Optional Cutter Wheel Drum Assembly
(For Edger Assembly)**
- 14 - Illustration/Parts Listing 10: Optional Roto-Peen Flap/Hub Assembly
(For Edger Assembly)**
- (Back Cover) - Limited Equipment Warranty**

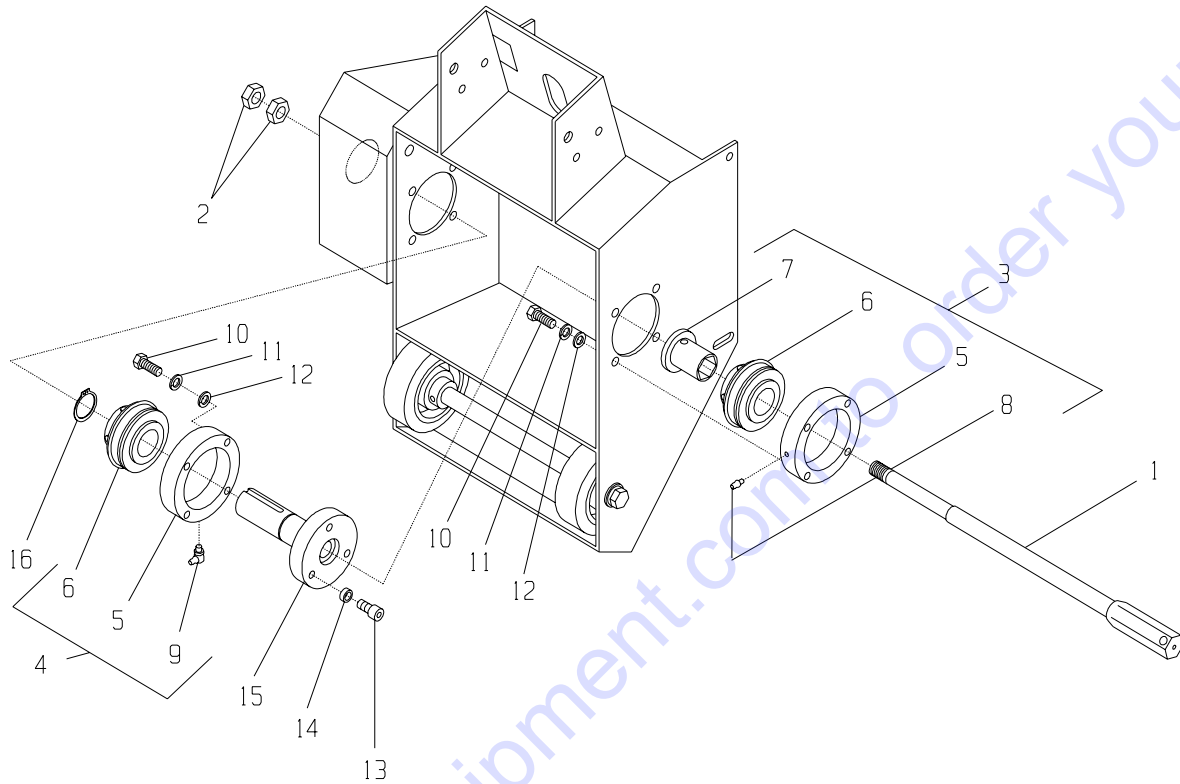
ILLUSTRATION 1: FRAME ASSEMBLY



PARTS LISTING - ILLUSTRATION 1: FRAME ASSEMBLY

ITEM #	PART #	DESCRIPTION	QTY.
1	65009	Handle Bar, CPM-8	1
2	10055	Screw, Cap 3/8-16 x 1	4
3	10608	Grip, Hand 1" Model AT	2
4	10005	Plug, Hole 7/8" (Chrome) - <i>Electric Models Only</i>	1
5	14023	Knob, Ball 1-3/8" DIA. W/ 1/2-13 THD.	1
6	10127	Screw, Drive 1/8 X 1/4" L	1
7	10808	Fitting, Grease 1/4-28 Straight	2
8	65007	Linkage Support, Upper, CPM-4/8	1
9	10359	Screw, Cap 5/8-11 X 3-1/4	1
10	10073	Washer, Flat 5/8	3
11	79035	Bushing, Rubber 5/8"ID X 1/4"THK	1
12	65019	Handwheel, Small W/ 5/8-8 X 13"Rod	1
13	80007	Decal, Cut Control - DWN/UP (Small Round)	1
14	14023	Knob, Ball 1-3/8" DIA. W/ 1/2-13 THD.	1
15	10346	Screw, Skt. Hd. Cap 1/2-13 x 4-1/2	1
16	50550	Sleeve for 1/2"Capscrew, Tapered	1
17	10073	Washer, Flat 5/8	2
18	85005	Bearing, Ball 5/8"ID x 1-1/2"OD (Thrust)	1
19	10096	Collar, Locking 5/8" ID	1
20	65006	Linkage, Lower	1
21	81001	Screw, Cap 1/2-13 X 4	1
22	10407	Nut, Lock 1/2-13	1
23	65004	Fork	1
24	65005	Spacer, Rear Wheel 2-3/16"	2
25	52001	Wheel, 4 x 1-1/2 x 3/4" Brg. Alum./Rubber	2
26	10306	Pin, Cotter 3/16 x 1-1/4	2
27	65015	Bolt, Allthread Rod 1/2-13 X 8	1
28	10312	Washer, Flat 1 1/2	2
29	10407	Nut, Lock 1/2-13	1
30	65001	Main Frame	1
31	10304	Screw, Cap 1/2-20 x 1	2
32	10045	Washer, Lock 1/2	2
33	10312	Washer, Flat 1/2	2
34	65014	Axle Shaft, Front 3/4" DIA. X 12-7/32" L, CPM-8	1
35	10428	Collar, Locking 3/4" ID	2
36	52001	Wheel, 4 x 1-1/2 x 3/4" Brg. Alum./Rubber	2
37	65036	Brushes (Set of 4)	1
38	10834	Screw, Cap 1/4-20 x 1/2	8
39	10861	Nut, Keps 1/4-20	8
40	65021	Plug, Cap 2"	1
41	65003	Cover, Belt	1
42	65022	Plug, Hole 2"	1
43	10422	Nut, Acorn 1/2-20	2
44	10045	Washer, Lock 1/2	2
45	10312	Washer, Flat 1/2	4
46	10072	Nut 1/2-20	2
47	65016	Spacer Tube 1/2" ID X 3-9/16" L, CPM-8	2
48	65017	Screw, Clap 1/2-20 x 5	2
49		Mount, Engine	1
	65002	Motor, Standard, CPM-8 (Excluding 5.5 HP Honda)	
	65095	5.5 HP Honda, CPM-8 (Export Models Only)	
50	10021	Screw, Cap 3/8-24 X 1	2
51	10025	Washer, Flat 3/8	4
52	10004	Nut, Lock 3/8-24	2
53	10802	Bolt, Carriage 3/8-16 X 1	2
54	10025	Washer, Flat 3/8	6
55	10811	Washer, Lock 3/8	6
56	10404	Nut 3/8-16	3

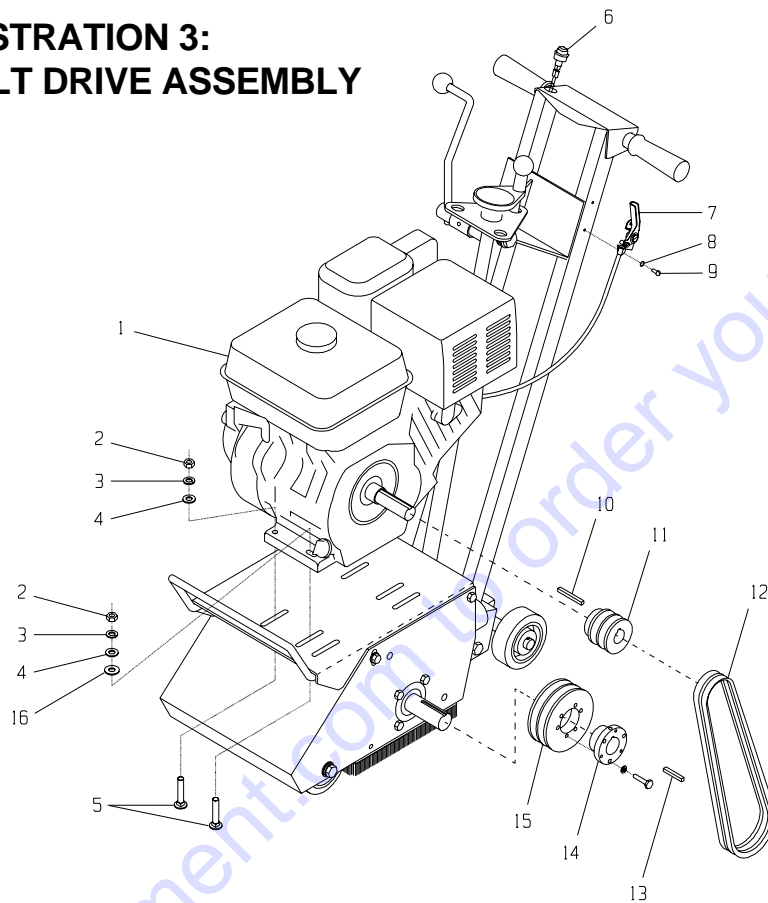
ILLUSTRATION 2: DRUM SHAFT AND BEARINGS



PARTS LISTING - ILLUSTRATION 2: DRUM SHAFT AND BEARINGS

ITEM #	PART #	DESCRIPTION	QTY.
1	65037	Drum/Hub Shaft 18-3/8" Length, CPM-8	1
2	65039	Nut, Jam 5/8-11 Left-Hand Thread	2
3	65057	Bearing Assy. Complete, 1" Hex Bore	1
4	65056	Bearing Assy. Complete, 1-1/4" Dia. Bore	1
5	65031	Retainer, Bearing, CPM-8	2
6	65030	Bearing, Ball 1-1/4" W/Snap Ring	2
7	65033	Bushing, Bearing, 1" Hex Bore, CPM-8	1
8	10808	Fitting, Grease 1/4-28 Straight	1
9	10961	Fitting, Grease 1/4" -28 X 90°	1
10	10309	Screw, Cap 3/8-24 X 1-1/4"	8
11	10811	Washer, Lock 3/8"	8
12	10025	Washer, Flat 3/8"	8
13	10878	Screw, Skt. Hd. Cap 3/8-24 X 1"	3
14	10113	Spacer, Steel 9/16" OD X 3/8" ID X 7/32"	3
15	65038	Driver, CPM-8	1
16	10873	Retaining Ring, Ext. 1-1/4" 5100-125	1

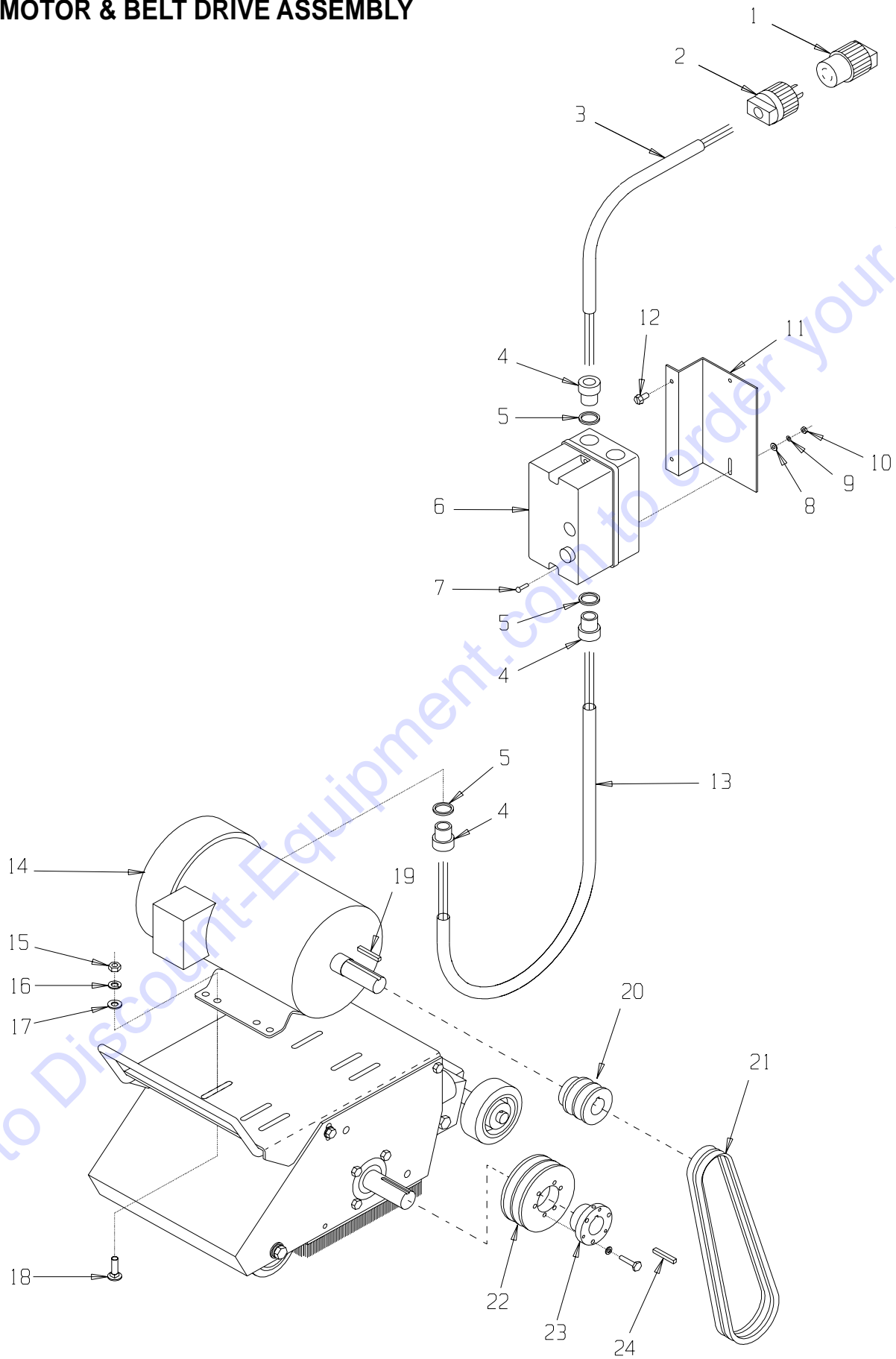
ILLUSTRATION 3: ENGINE & BELT DRIVE ASSEMBLY



PARTS LISTING - ILLUSTRATION 3: ENGINE & BELT DRIVE ASSEMBLY

ITEM #	PART #	DESCRIPTION	QTY.
1		Engine	1
	15027	Honda 9.0 HP GX270	
	15015	Kohler 8.0 HP Magnum M8T	
	15039	B&S Vanguard 7.5 HP 138432	
	15033	B&S Vanguard 9.0 HP 185432	
	40387	Honda 5.5 HP GX160 (Export Models Only)	
2	10054	Nut 5/16-18	4
3	10801	Washer, Lock 5/16	4
4	10213	Washer, Flat 5/16	4
5	10918	Bolt, Carriage 5/16-18 X 1-3/4	4
6	50010	Switch Kit, Stop Button, 7/8" Hole	1
7	40388	Cable, Throttle Control, Lever-Type 24"	1
8	10831	Washer, Lock, Int. Tooth #10	2
9	10828	Screw, Self-Tap Pan Head 10-24 X 1/2	2
10	10307	Key 1/4 SQ X 2-1/4	1
11		Sheave	1
	10553	2.5" OD X 2 Gr. A X 1" Bore (Excluding Honda 5.5 HP GX160)	
	10559	2.5" OD X 2 Gr. A X 3/4" Bore (For use with Honda 5.5 HP only)	
12		Belt	2
	81007	AX-33 (Excluding Honda 5.5 HP GX160)	

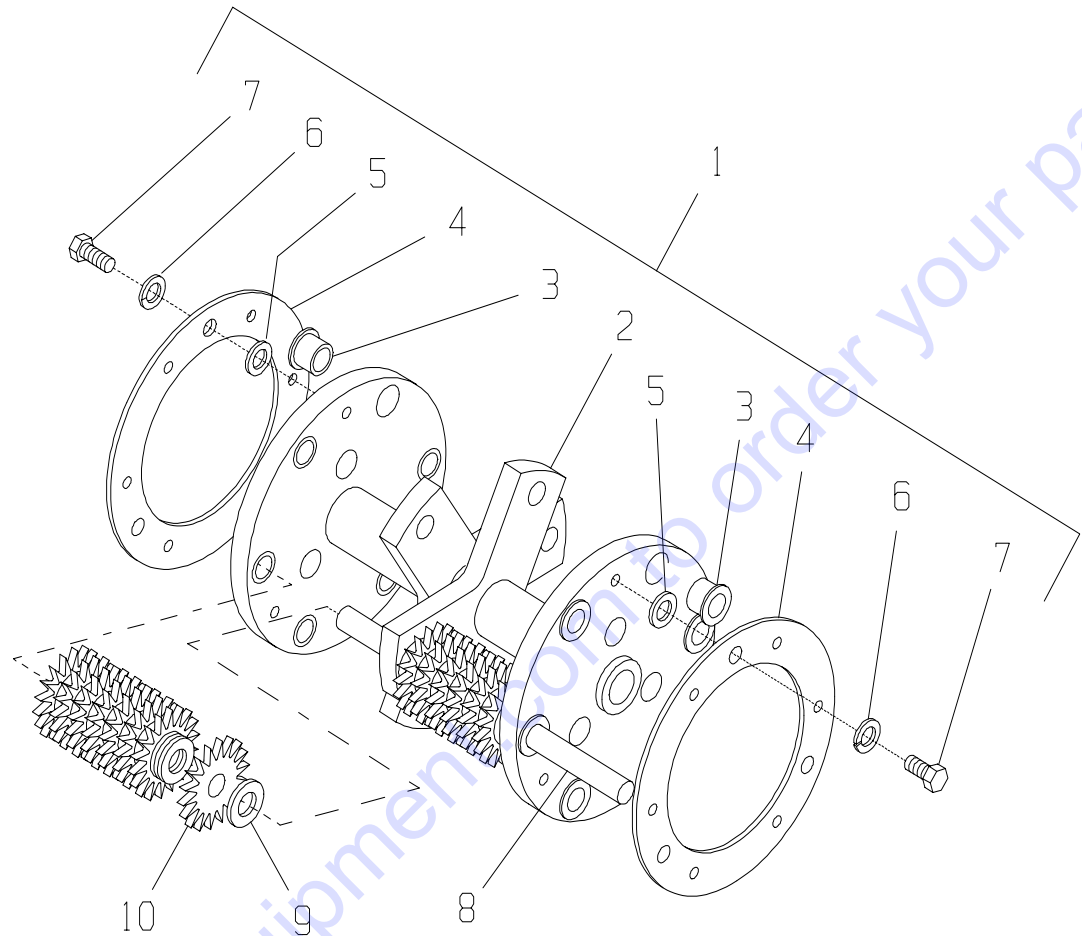
ILLUSTRATION 4: MOTOR & BELT DRIVE ASSEMBLY



PARTS LISTING - ILLUSTRATION 4: MOTOR & BELT DRIVE ASSEMBLY

ITEM #	PART #	DESCRIPTION	QTY.	
1	40000	Plug Connector, Locking 20A/250V (See Note)	1	
2	40037	Plug, Locking 20A/250V (See Note)	1	
3		Wire Harness (See Note)	1	
	86026	10/3 x 24" LOA		
	86022	12/4 x 24" LOA		
4	10605	Connector, Strain Relief 3/4 NPT x .650-.750" Range	3	
5	10740	Conduit Lock Nut 3/4 NP	3	
6	85045	Starter CA3-30 W/ Large Enclosure (Specify HP, Phase, Volts, Amps, Hertz)		
7	10362	Screw, Machine 8-32 x 3/4	2	
8	10850	Washer, Flat #10	2	
9	10461	Washer, Lock, Int. Tooth #8	2	
10	10462	Nut 8-32	2	
11	86027	Mounting Brkt., Large CA3-30 Starter	1	
12	10846	Screw, Self-Tap Hex Washer 1/4-20 x 1/2	2	
13		Wire Harness (See Note)	1	
	65040	10/3 x 50" CPM-8-E 1-Phase		
	65041	12/4 x 50" CPM-8-E 3-Phase		
14		Motor	1	
	81026	Baldor 5.0 HP-1 PH, 60 HZ, 3450 RPM		
	81022	Baldor 5.0 HP-3 PH, 60 HZ, 3450 RPM		
	16020	Baldor 5.0 HP-3 PH, 50 HZ, 2850 RPM		
15	10054	Nut 5/16-18	4	
16	10801	Washer, Lock 5/16	4	
17	10213	Washer, Flat 5/16	4	
18	10819	Bolt, Carriage 5/16-18 x 1	4	
19	10101	Key 1/4" SQ x 1-3/4" (Included with motor)	1	
20		Sheave (See Chart)	1	
	10555	2.50" OD x 2 Gr. A x 1-1/8" Bore		
	10526	3.00" OD x 2 Gr. A x 1-1/8" Bore		
21	10239	Belt AP-32	2	
22	40317	Key 1/4" SQ X 1-5/8"	1	
23	10505	Bushing, Sheave SH x 1-1/4" Bore	1	
24	65045	4.05" OD x 2 Gr. A x SH	1	
<p>NOTE: Plug and Connector (Items #1 & #2) are not supplied on 3 Phase Units. Single Phase units use 10/3 Wire Harness. Three Phase units use 12/4 Wire Harness.</p>				
BELT DRIVE SPECIFICATIONS CHART FOR ELECTRIC CPM-8				
MOTOR SPECS	DRUM RPM (NO LOAD)	MOTOR SHEAVE (ITEM #20)	DRUM SHEAVE (ITEM #24)	BELT SIZE
5.0 HP/60 Hz 3450 RPM	1997 RPM	2.50" O.D. (1 PIECE)	4.05" O.D. (SH 1-1/4)	AP-32
5.0 HP/60 Hz 2850 RPM	2025 RPM	3.00" O.D. (1 PIECE)	4.05" O.D. (SH 1-1/4)	AP-32

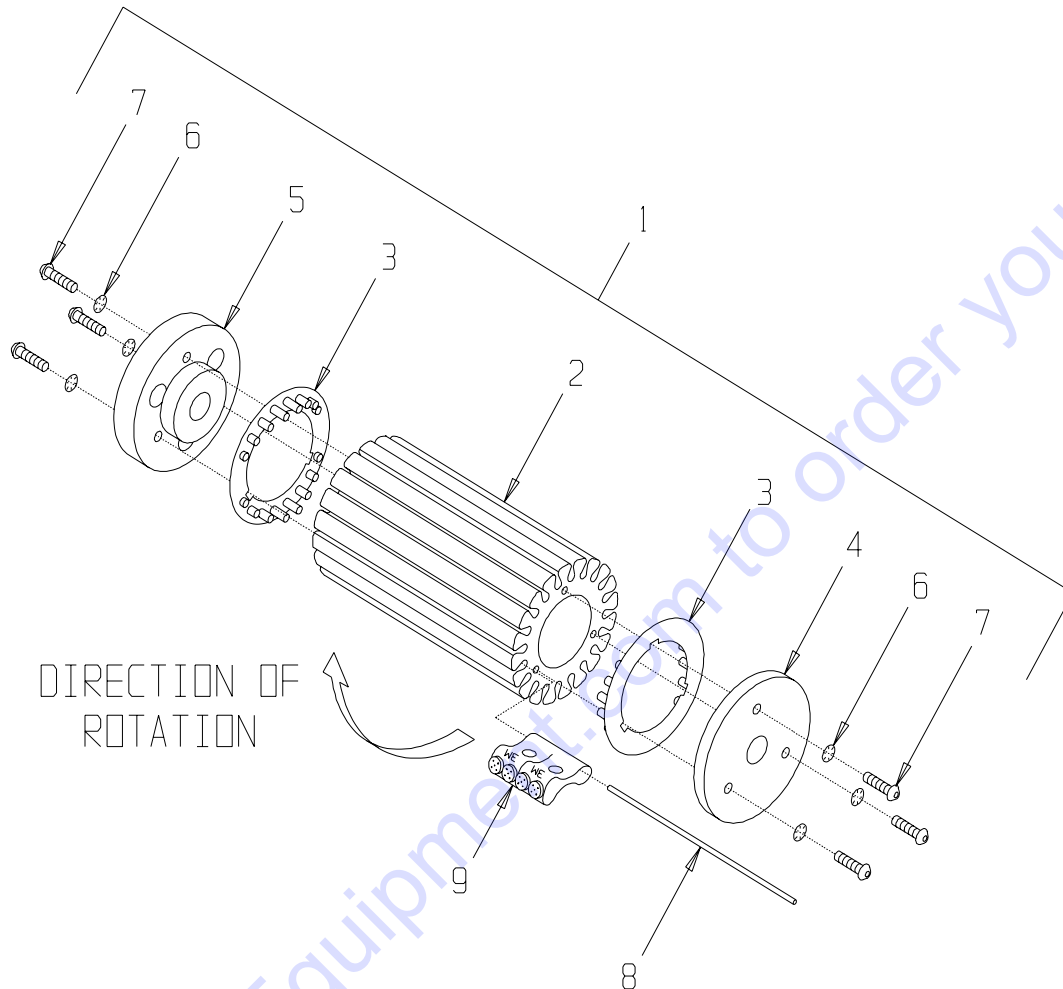
ILLUSTRATION 5: CUTTER WHEEL DRUM ASSEMBLY (STANDARD)



PARTS LISTING - ILLUSTRATION 5: CUTTER WHEEL DRUM ASSEMBLY (STANDARD)

ITEM #	PART #	DESCRIPTION	QTY.
1	65050	Drum Assy. Complete, CPM-8 Cutter (Includes Items 2 thru 8)	
2	65051	Drum Only, Cutter, CPM-8	1
3	65055	Bushing, Drum, Hardened Steel 1/2" ID	12
4	65054	Retaining Plate, Cutter Shaft CPM-4/8	2
5	10801	Washer, Lock 5/16	6
6	10213	Washer, Flat 5/16	6
7	10053	Screw, Cap 5/16-18 X 3/4	6
8	20150	CP407 Cutter Shaft For CPM-8, 8-1/2" L	6
9	12230	CG227 Spacer 1/2" ID	6
10		Cutter Wheels	6
	12206	JRS501-P, 18 Tooth - Pointed Light Scarifying, Hi Carbon Steel, 2" OD x 1/2" ID x 3/16" THK	
	20206	CP305, 12 Tooth, Flat Tip General Purpose, Hi Carbon Steel, 2" OD x 5/8" ID x 3/16" THK	
	20156	CP206T, 6 Point Long Lasting, Tungsten Carbide, 1-3/4" OD x 5/8" ID x 1/4" THK	

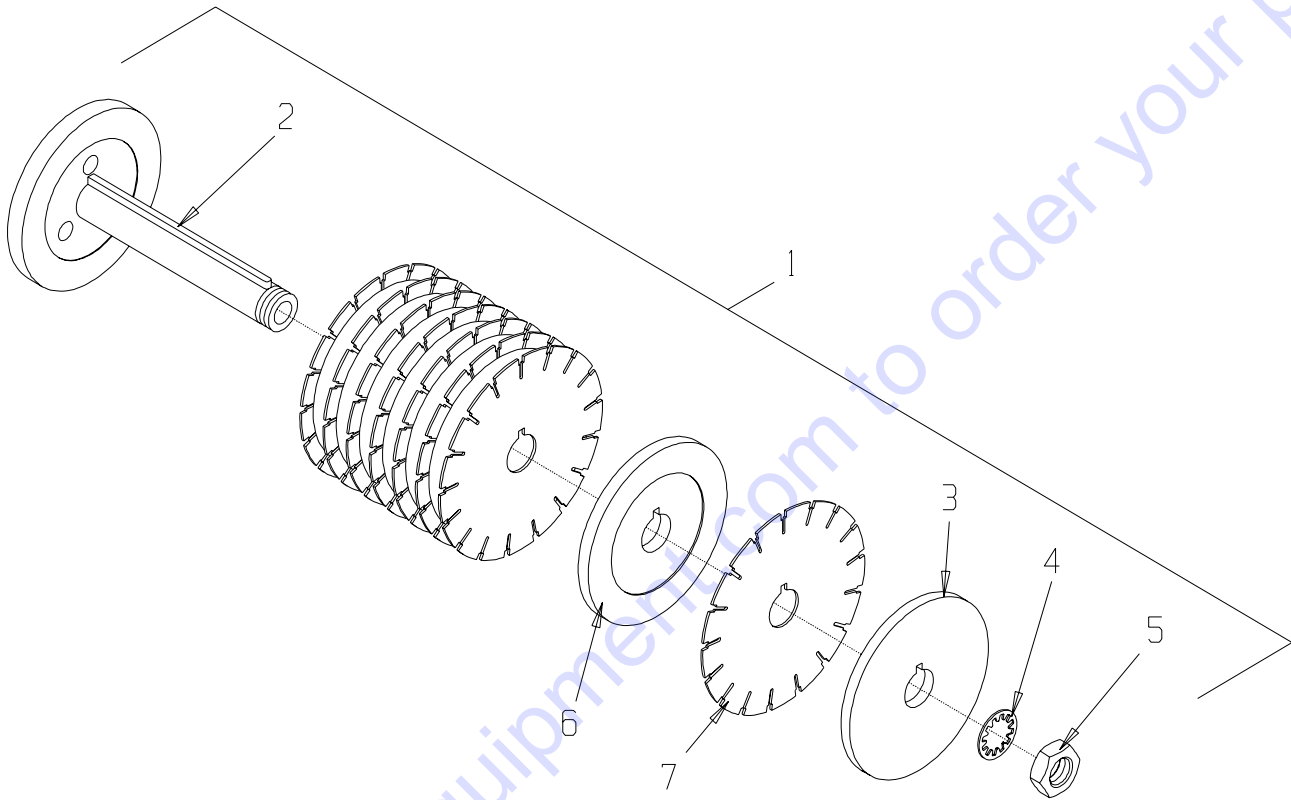
ILLUSTRATION 6: ROTO-PEEN FLAP HUB ASSEMBLY (STANDARD)



PARTS LISTING - ILLUSTRATION 6: ROTO-PEEN FLAP HUB ASSEMBLY (STANDARD)

ITEM #	PART #	DESCRIPTION	QTY.
1	65060	Hub-8 Assembly, Complete, ROTO-PEEN 7-1/2" (Includes Items 2 thru 8)	
2	65066	Hub Only, ROTO-PEEN 7-1/2" CPM-8	1
3	25060	Spacer Ring, ROTO-PEEN Hub	2/Set
4	65067	Flange, End Cap, ROTO-PEEN, CPM-8	1
5	65068	Flange, Driver, ROTO-PEEN Hub, CPM-8	1
6	10451	Washer, Lock, Int. Tooth 1/4"	6
7	10871	Screw, Skt. Button Head 1/4-20 X 1	6
8	65065	Keeper Pin 7" ROTO-PEEN, Set of 20	1 Set
9	-	FLAP, ROTO-PEEN	▣
	25020	2" TYPE B	
	25021	2" TYPE C	
	25022	2" TYPE D	

ILLUSTRATION 7: DIAMOND GROOVING HEAD ASSEMBLY (STANDARD)



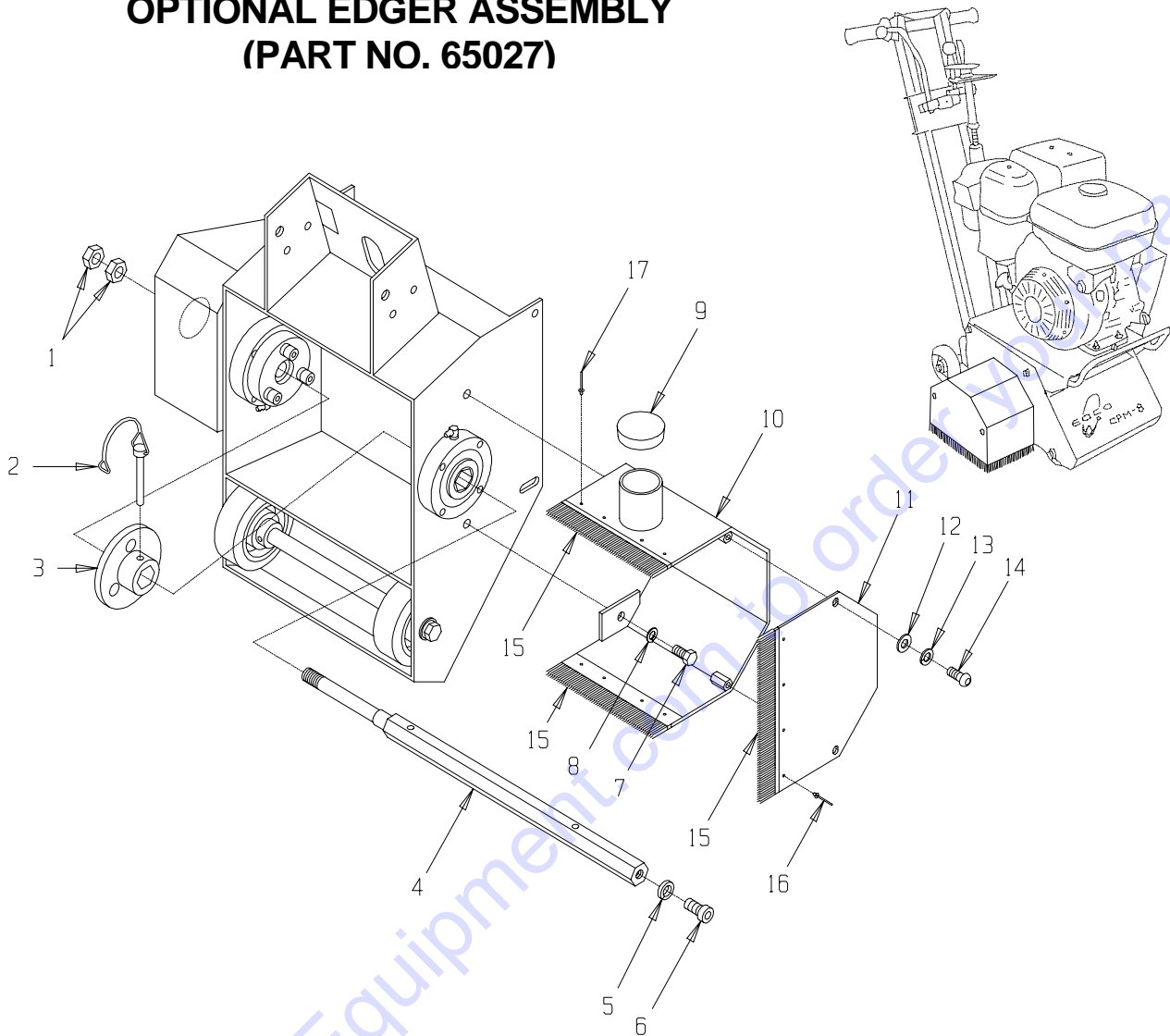
PARTS LISTING - ILLUSTRATION 7: DIAMOND GROOVING HEAD ASSEMBLY (STANDARD)

ITEM #	PART #	DESCRIPTION	QTY.
1	65077	Diamond Grooving Head Assembly (Includes Items 2 through 5)	
2	65070	Arbor, Diamond Grooving Head, CPM-8	1
3	65071	Arbor, Blade Retaining Cap 6", CPM-8	1
4	65075	Washer, Lock, Int. Tooth 1-1/4"	1
5	65076	Nut, Jam 1 1/4-12	1
6		Spacer, Blade	☐
	65072	6" O.D. X 1-1/4" I.D. X .063" THK	
	65073	6" O.D. X 1-1/4" I.D. X 1/2" THK	
	65074	6" O.D. X 1-1/4" I.D. X 1" THK	
	65078	6" O.D. X 1-1/4" I.D. X 5/8" THK	
7	39808	DCC-05S Diamond Blade, 7 x .090 x 1.25" W/ Keyway	☐

☐ NOTE:

**Diamond Blades and Spacers are not included with Head Assembly.
These quantities vary with the type of set-up used.**

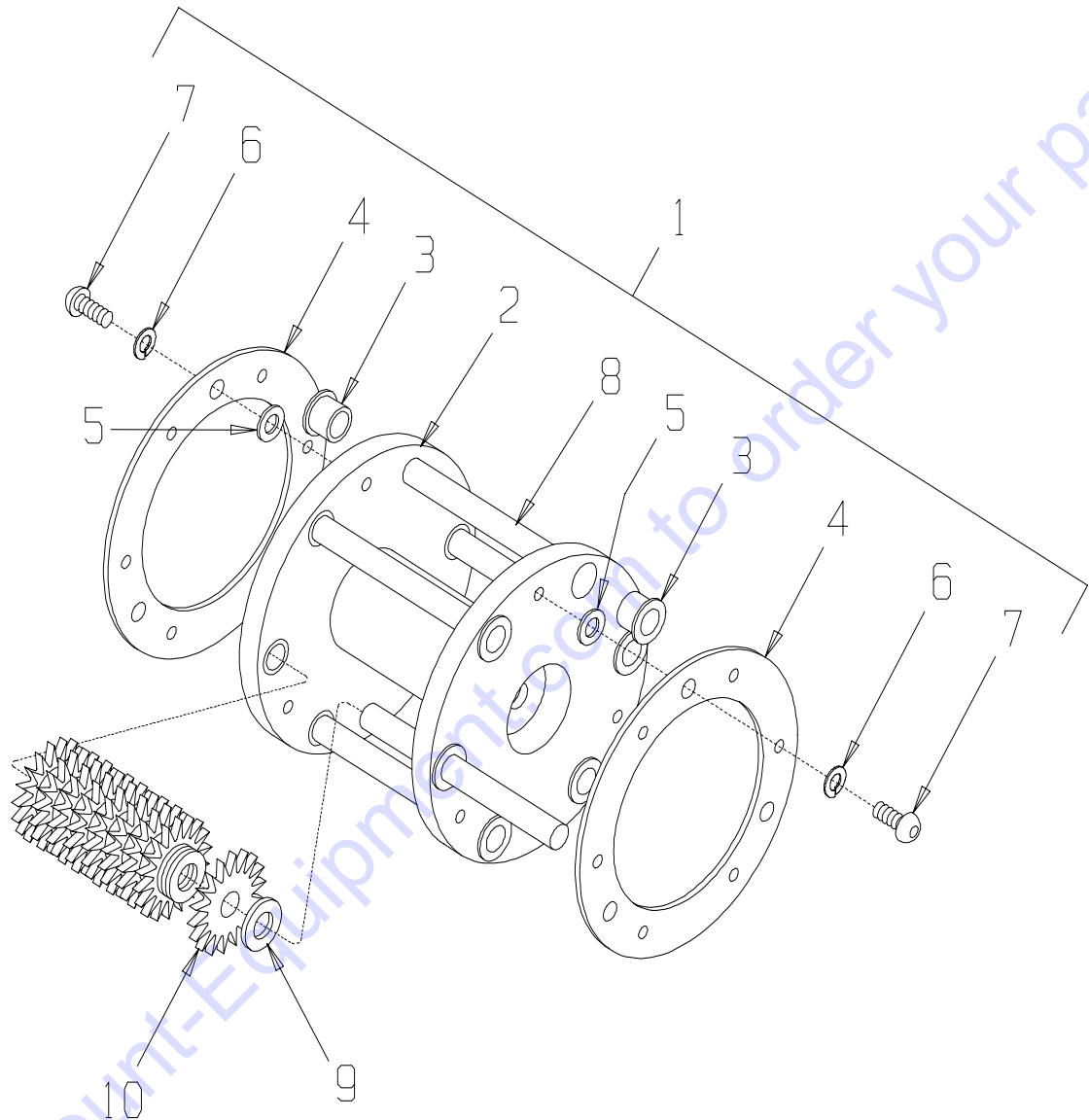
**ILLUSTRATION 8:
OPTIONAL EDGER ASSEMBLY
(PART NO. 65027)**



**PARTS LISTING - ILLUSTRATION 8:
OPTIONAL EDGER ASSEMBLY**

ITEM #	PART #	DESCRIPTION	QTY.
1	65039	Nut, Jam 5/8-11 Left-Hand Thread	2
2	65028	Pin, Wire Lock 5/16 X 2-3/4	1
3	65026	Flange, Driver, CPM-8 Edger	1
4	65025	Drum Shaft, Side Mounted Edger, CPM-8	1
5	10420	Washer, Lock 1/2 Heavy-Duty	1
6	10490	Screw, Skt. Hd. Cap 1/2-13 X 1	1
7	10907	Screw, Cap 3/8-16 X 3/4	2
8	10811	Washer, Lock 3/8	2
9	65021	Plug, Cap 2"	1
10	65023	Cover W/ Brushes, CPM-8 Edger	1
11	65024	Cover Side Panel W/ Brush, CPM-8 Edger	1
12	10213	Washer, Flat 5/16	2
13	10801	Washer, Lock 5/16	2
14	10627	Screw, Skt. Button Head 5/16-18 X 3/4	2
15	65029	Brushes (SET OF 3) Edger (Included with Items 10 & 11)	1
16	10128	Rivet, Blind 1/8 X .265" L X .250" HD. DIA.	4

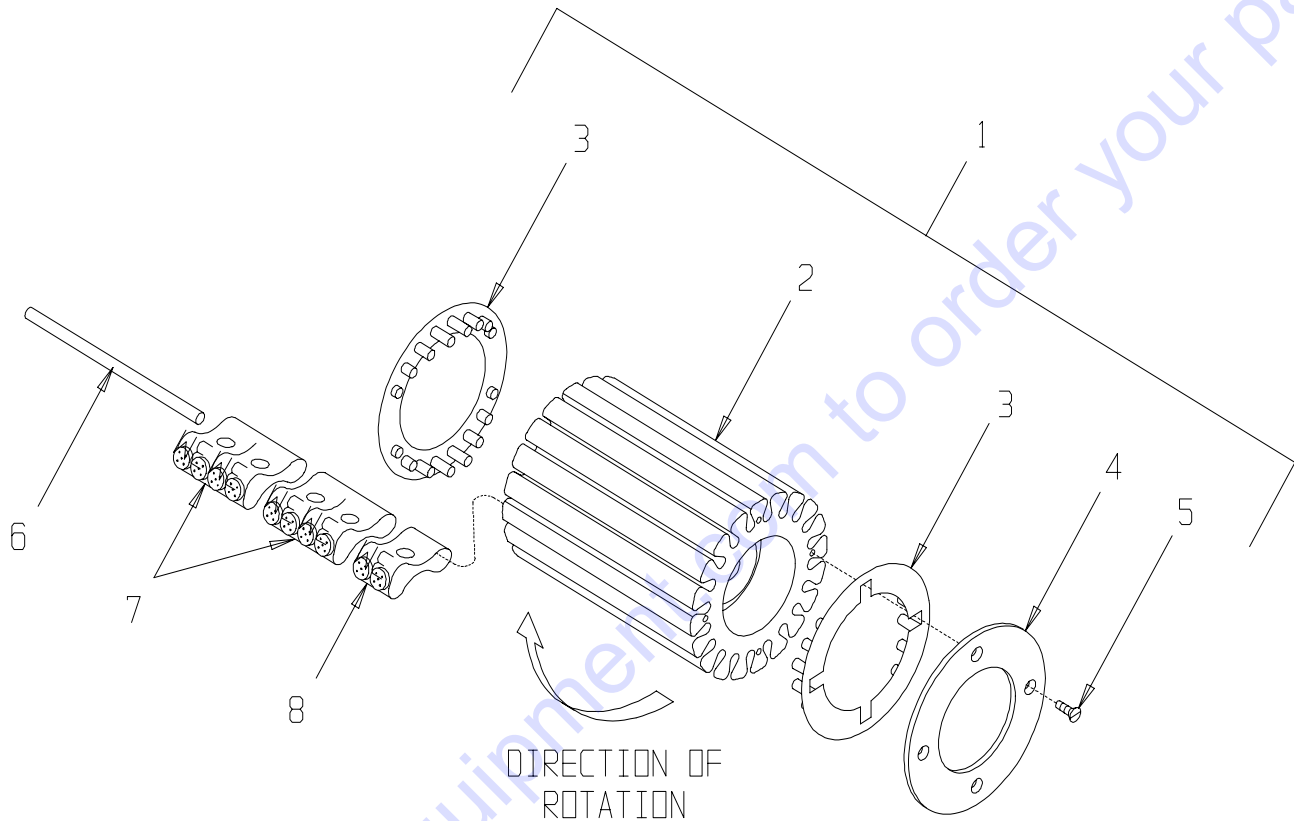
**PARTS LISTING-ILLUSTRATION 9:
OPTIONAL CUTTER WHEEL DRUM ASSEMBLY
(USED WITH EDGER ASSEMBLY ONLY)**



**PARTS LISTING - ILLUSTRATION 9:
OPTIONAL CUTTER WHEEL DRUM ASSEMBLY**

ITEM #	PART #	DESCRIPTION	QTY.
1	C66040	Drum Assembly, Cutter CPM-4 (Includes Items 2 thru 8)	
2	C66041	Drum Only, Cutter, CPM-4	1
3	65055	Bushing, Drum, Hardened Steel 1/2" ID	12
4	65054	Retaining Plate, Cutter Shaft CPM-4/8	2
5	10213	Washer, Flat 5/16	6
6	10801	Washer, Lock 5/16	6
7	10627	Screw, Skt. Button Head 5/16-18 X 3/4	6
8	C66043	CP410 Shaft, 1/2 X 5-1/4"L, CPM-4	6
9	12230	CG227 Spacer 1/2" ID	6

**PARTS LISTING-ILLUSTRATION 10:
OPTIONAL ROTO-PEEN FLAP HUB ASSEMBLY
(USED WITH EDGER ASSEMBLY ONLY)**



**PARTS LISTING - ILLUSTRATION 10:
OPTIONAL ROTO-PEEN FLAP HUB ASSEMBLY**

ITEM #	PART #	DESCRIPTION	QTY.
1	C66050	Hub-4 Assembly, Complete, Roto-Peen 5-1/2"	
2	C66051	Hub Only, Roto-Peen, CPM-4	1
3	25060	Spacer Ring, Roto-Peen Hub	2/Set
4	C66052	Retaining Plate, Roto-Peen Flap CPM-4	1
5	10628	Screw, Flat Head Slotted 8-32 X 1/2	4
6	C66054	Keeper Pin 5" Roto-Peen, Set of 20	1 Set
7		Roto-Peen Flap 2"	☒
	25020	Type B	
	25021	Type C	
	25022	Type D	
8	-----	Roto-Peen Flap 1" (Cut 2" Flap in Half)	☒

☒ NOTE:

Flaps are not included with Hub Assembly.

Number of Flaps vary with type of set-up used.

Refer to Assembly Instructions for suggested Flap Types and quantities.

PARTS FINDER

**Search Website
by Part Number**



**Search Manual
Library For Parts
Manual & Lookup Part
Numbers – Purchase
or Request Quote**

Search Manuals

Enter your information to help us find the right parts manual for your machine.

* Brand:

* Model:

* Serial:

* Part Number:

SEARCH

**Can't Find Part or
Manual? Request Help
by Manufacturer,
Model & Description**

Parts Order Form

Please fill in the following information to help us find the right part for your machine.

Manufacturer:	<input type="text"/>
Model:	<input type="text"/>
Description:	<input type="text"/>
Part Number:	<input type="text"/>
Quantity:	<input type="text"/>
Notes:	<input type="text"/>

REQUEST HELP

Discount-Equipment.com is your online resource for quality parts & equipment.

Florida: **561-964-4949** Outside Florida TOLL FREE: **877-690-3101**

Need parts?

Click on this link: <http://www.discount-equipment.com/category/5443-parts/> and choose one of the options to help get the right parts and equipment you are looking for. Please have the machine model and serial number available in order to help us get you the correct parts. If you don't find the part on the website or on one of the online manuals, please fill out the request form and one of our experienced staff members will get back to you with a quote for the right part that your machine needs.

We sell worldwide for the brands: Genie, Terex, JLG, MultiQuip, Mikasa, Essick, Whiteman, Mayco, Toro Stone, Diamond Products, Generac Magnum, Airman, Haulotte, Barreto, Power Blanket, Nifty Lift, Atlas Copco, Chicago Pneumatic, Allmand, Miller Curber, Skyjack, Lull, Skytrak, Tsurumi, Husquvarna Target, Stow, Wacker, Sakai, Mi-T-M, Sullair, Basic, Dynapac, MBW, Weber, Bartell, Bennar Newman, Haulotte, Ditch Runner, Menegotti, Morrison, Contec, Buddy, Crown, Edco, Wyco, Bomag, Laymor, EZ Trench, Bil-Jax, F.S. Curtis, Gehl Pavers, Heli, Honda, ICS/PowerGrit, IHI, Partner, Imer, Clipper, MMD, Koshin, Rice, CH&E, General Equipment, Amida, Coleman, NAC, Gradall, Square Shooter, Kent, Stanley, Tamco, Toku, Hatz, Kohler, Robin, Wisconsin, Northrock, Oztec, Toker TK, Rol-Air, APT, Wylie, Ingersoll Rand / Doosan, Innovatech, Con X, Ammann, Mecalac, Makinex, Smith Surface Prep, Small Line, Wanco, Yanmar