



REVISED STARTING
SERIAL # 090610027

PARTS LIST MANUAL

MODEL TG10



10" TURBO GRINDERS

SKU #	MODEL #	POWER OPTION
56600	TG10-11H	HONDA GASOLINE ENGINE MODEL GXV340UT2-DX3
56700	TG10-11P	HONDA PROPANE ENGINE MODEL GXV340T2-DP23
56900	TG10-5L/230/1	LEESON ELECTRIC MOTOR 5HP 1PH 60Hz 230V
56800-230	TG10-5B/230/3	BALDOR ELECTRIC MOTOR 5HP 3PH 60Hz 230V
56800-460	TG10-5B/460/3	BALDOR ELECTRIC MOTOR 5HP 3PH 60Hz 460V
56800-50/220	TG10-5B/50/220/3	BALDOR ELECTRIC MOTOR 5HP 3PH 50Hz 220V
56800-50/380	TG10-5B/50/380/3	BALDOR ELECTRIC MOTOR 5HP 3PH 50Hz 380V
56800-50/440	TG10-5B/50/440/3	BALDOR ELECTRIC MOTOR 5HP 3PH 50Hz 440V



A Division of Equipment Development Company, Inc.

PARTS FINDER

**Search Website
by Part Number**



**Search Manual
Library For Parts
Manual & Lookup Part
Numbers – Purchase
or Request Quote**

Search Manuals

Enter your information to help us find the right part for your machine.

* Brand:

* Model:

* Serial:

* Part Number:

SEARCH

**Can't Find Part or
Manual? Request Help
by Manufacturer,
Model & Description**

Parts Order Form

Please fill in the following information to help us find the right part for your machine.

Manufacturer:	<input type="text"/>
Model:	<input type="text"/>
Description:	<input type="text"/>
Part Number:	<input type="text"/>
Quantity:	<input type="text"/>
Notes:	<input type="text"/>
Submit	<input type="button" value="Submit"/>

Discount-Equipment.com is your online resource for quality parts & equipment.

Florida: **561-964-4949** Outside Florida TOLL FREE: **877-690-3101**

Need parts?

Click on this link: <http://www.discount-equipment.com/category/5443-parts/> and choose one of the options to help get the right parts and equipment you are looking for. Please have the machine model and serial number available in order to help us get you the correct parts. If you don't find the part on the website or on one of the online manuals, please fill out the request form and one of our experienced staff members will get back to you with a quote for the right part that your machine needs.

We sell worldwide for the brands: Genie, Terex, JLG, MultiQuip, Mikasa, Essick, Whiteman, Mayco, Toro Stone, Diamond Products, Generac Magnum, Airman, Haulotte, Barreto, Power Blanket, Nifty Lift, Atlas Copco, Chicago Pneumatic, Allmand, Miller Curber, Skyjack, Lull, Skytrak, Tsurumi, Husquvarna Target, Stow, Wacker, Sakai, Mi-T-M, Sullair, Basic, Dynapac, MBW, Weber, Bartell, Bennar Newman, Haulotte, Ditch Runner, Menegotti, Morrison, Contec, Buddy, Crown, Edco, Wyco, Bomag, Laymor, EZ Trench, Bil-Jax, F.S. Curtis, Gehl Pavers, Heli, Honda, ICS/PowerGrit, IHI, Partner, Imer, Clipper, MMD, Koshin, Rice, CH&E, General Equipment, Amida, Coleman, NAC, Gradall, Square Shooter, Kent, Stanley, Tamco, Toku, Hatz, Kohler, Robin, Wisconsin, Northrock, Oztec, Toker TK, Rol-Air, APT, Wylie, Ingersoll Rand / Doosan, Innovatech, Con X, Ammann, Mecalac, Makinex, Smith Surface Prep, Small Line, Wanco, Yanmar

READ AND UNDERSTAND THE OPERATORS INSTRUCTION MANUAL THOROUGHLY BEFORE ATTEMPTING TO OPERATE THIS EQUIPMENT. Death or serious injury could occur if this machine is used improperly.



SAFETY MESSAGES



The safety instructions are preceded by a graphic alert message of DANGER, WARNING, or CAUTION.



Indicates an imminent hazard which, if not avoided, will result in death or serious injury.



Indicates an imminent hazard which, if not avoided, can result in death or serious injury.



Indicates hazards which, if not avoided, could result in serious injury and or damage to the equipment.

GASOLINE Powered Equipment



- Do not operate gasoline powered equipment without adequate ventilation. Carbon monoxide is an invisible, odorless gas that can kill.

ELECTRICAL Powered Equipment



- ELECTRICAL HAZARD** - Be sure equipment is properly grounded. Failure to comply could kill or result in serious injury.



The engine exhaust from this product contains chemicals known to the State of California to cause cancer, birth defects or other reproductive harm.

GENERAL INSTRUCTIONS



- You must read and understand the operators instruction manual and all other manuals associated with this machine. For your safety and the safety of others around you, it is extremely important to fully understand how to operate this machine in the way it was intended. Different model machines or older/newer versions of the same model may have different parts and controls that you need to understand. If instructions are not readable or available DO NOT USE this machine and contact the factory for a replacement Manual.
- You must be able to physically handle the bulk weight and power of this machine. If not properly controlled this machine can cause death or serious injury.
- Do not operate this machine in an impaired mental state. You must be able to exercise good judgement and reactions to maintain a safe working environment.
- This is a "one person" machine which means only one operator can be operating the machine at any one time. For the safety of others, maintain a safe operating distance to other personnel. Your work area should be defined and appropriately marked so bystanders and coworkers do not stand or walk near this machine and end up seriously injured by flying debris or exposing them to harmful noise or dust.
- This equipment is for Commercial use. Although this is a "one person" machine your work team should understand how to shut this machine off and quickly get medical help if an accident strikes the operator.
- Keep all guards in place during operation. The guards are to provide protection from inadvertent contact with dangerous moving parts, pinch points, or hot surfaces.
- Wear appropriate Personal Protective Equipment (PPE) including safety glasses, safety boots, work gloves, respiratory protection, hearing protection, and head protection. Do not wear loose clothing that can get tangled in moving parts. Failure to do so could result

in dismemberment or death. **Wear an approved respirator when removing hazardous materials or when grinding/cutting dry materials. Some dust particles such as concrete dust can contain silicate particles which can cause silicosis (a very serious lung disease). Contact NIOSH or OSHA for further details. When wet grinding/cutting, avoid contact with the concrete/asphalt slurry which can cause serious skin irritations.**

- You must maintain this machine per the maintenance schedule in the operator manual. Remember before adjusting, servicing, or fueling this machine, disconnect the source of power to the machine by disconnecting the spark plug (Gas models), or by unplugging the electrical power cord (electric models) or air hose (Pneumatic models) AT THE MACHINE so you can assure yourself it remains unplugged while you are working on it. Do not modify this machine. Use only genuine EDCO parts and accessories. Repairs and service should be performed by approved EDCO dealers or authorized technicians.
- You should look carefully around the area before you begin work so you can identify potential hazards such as deck inserts, pipes, columns, openings, electrical cords or outlets, or any other objects protruding from the slab surface.
- This machine has no brain so you must use your own. There is no substitute for safety. The safety decals on the machine are to serve as a reminder for information you must already know before you begin using this machine. Take a moment to reread the safety decals each time you use the machine. If your machine is missing any decals, contact the factory for a replacement (EDCO 1-800-638-3326).

PARTS LIST MANUAL

MODEL TG10

10" TURBO GRINDERS

TABLE OF CONTENTS

<u>Section</u>	<u>Page Number</u>
Safety Messages and General Instructions	2
How To Order Replacement Parts	3
Illustration 1: Main Grouping	4,5
Illustration 2: Water Valve Grouping	6
Illustration 3: Bearing Hub & Head Assembly	7
Illustration 4: Rigid Head Assembly (Standard)	8
Illustration 5: Flex Head Assembly (Optional)	9
Illustration 6: Engine & Belt Drive Grouping	10, 11
Illustration 7: Propane Grouping	12, 13
Illustration 8: Motor & Belt Drive Grouping	14, 15
Illustration 9: Optional Ball Caster Depth Stop Kit	16
Lovato Starter Box Wiring Diagram	17
Motor Wiring Diagram 1-Phase 60 Hz 230V (Leeson)	18
Motor Wiring Diagram 3-Phase 60 Hz 230/460V (Baldor)	19
Motor Wiring Diagram 3-Phase 50 Hz 220/380/440V (Baldor)	19
Limited Equipment Warranty of Sale - Terms & Conditions	20 (Back Page)



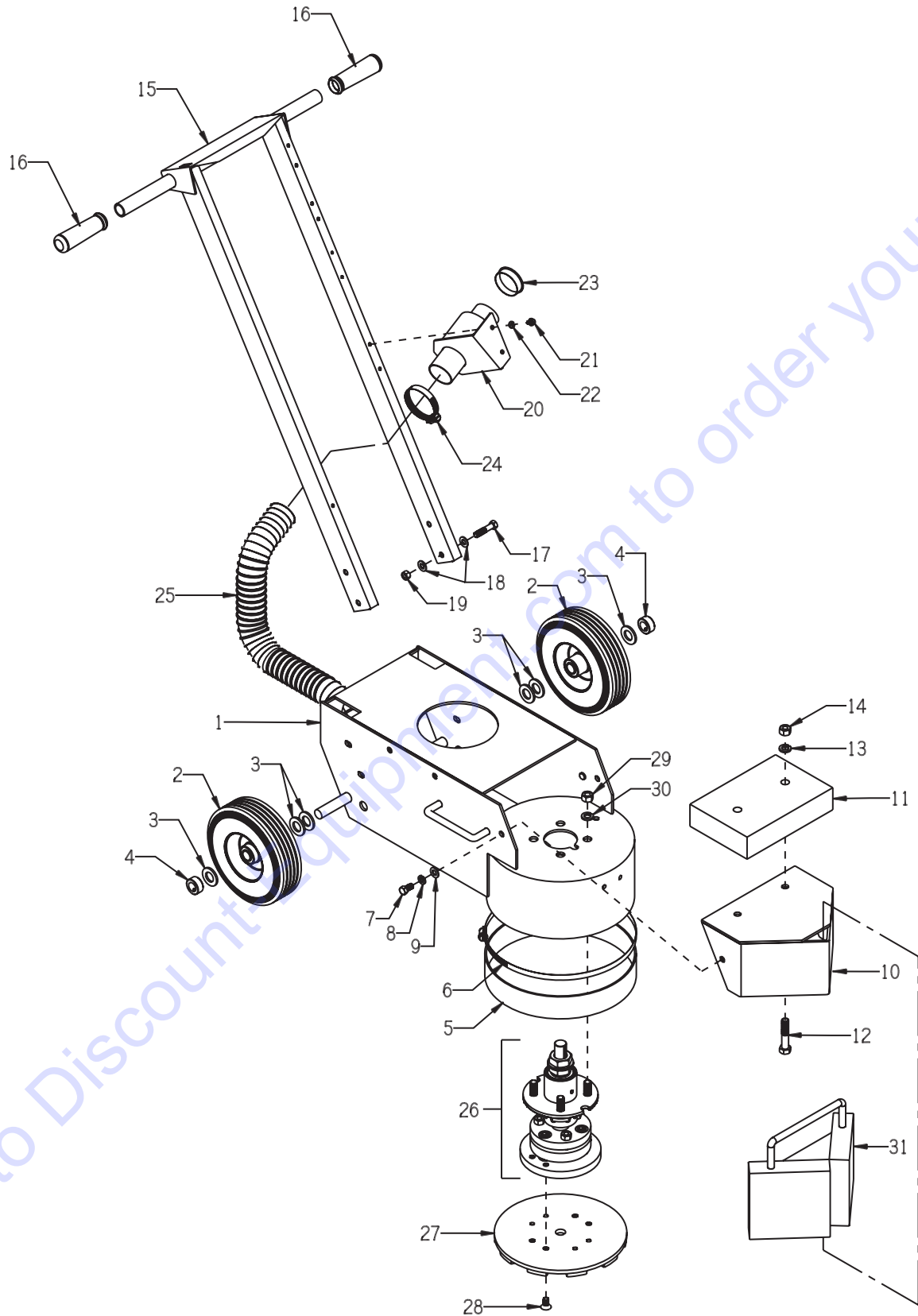
A Division of Equipment Development Company, Inc.

Printed in USA

©2009

Page 3

ILLUSTRATION 1: MAIN GROUPING



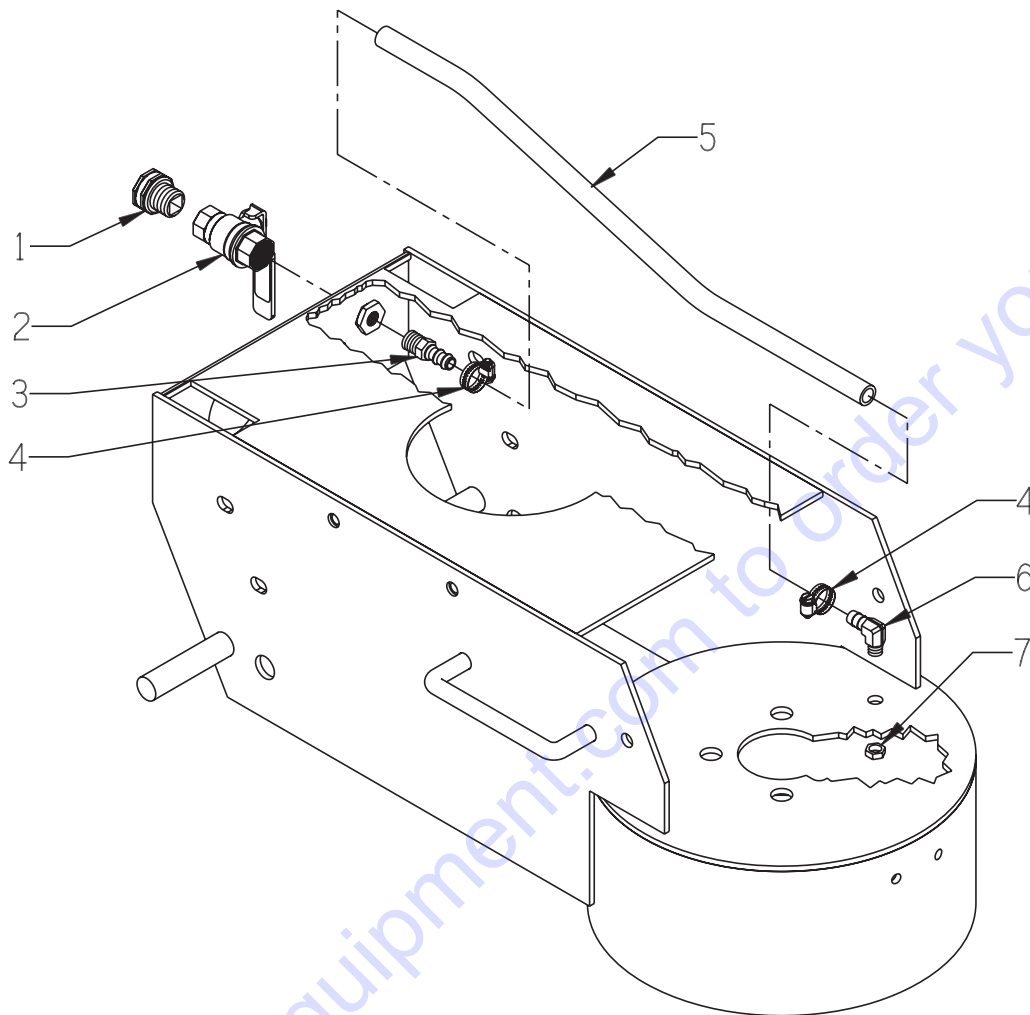
Go to DiscountEquipment.com to order your parts

PARTS LISTING - ILLUSTRATION 1 : MAIN GROUPING			
ITEM #	PART #	DESCRIPTION	QTY.
1	86336	MAIN FRAME	1
2	79013SH	WHEEL, STEEL HUB 8 X 2-1/2 X 3/4"BRG.	2
3	10009	WASHER, FLAT 3/4 SAE	6
4	10428	COLLAR, LOCKING 3/4"ID	2
5	86337	RUBBER SKIRT, 2"H X 35-1/8"L	1
6	86338	CLAMP, HOSE, SAE #188, 12-1/4"	1
7	10907	SCREW, CAP 3/8-16 X 3/4	2
8	10811	WASHER, LOCK 3/8	2
9	10025	WASHER, FLAT 3/8 SAE	2
10	86303	HOOD	1
11	86345	WEIGHT BLOCK, 30 LB. 9 X 6 X 2 (ELECTRIC MODELS ONLY)	1
12	10499	SCREW, CAP 1/2-13 X 3	2
13	10045	WASHER, LOCK 1/2	2
14	10417	NUT 1/2-13	2
15	86304	HANDLE BAR	1
16	10608	GRIP, HAND 1" MODEL AT	2
17	10029	SCREW, CAP 3/8-24 X 1-3/4	4
18	10025	WASHER, FLAT 3/8 SAE	8
19	10004	NUT, LOCK 3/8-24	4
20	86347	BRACKET, MULTI-VAC PORT 2-3"	1
21	10846	SCREW, CAP STSHW 1/4-20 X 1/2	2
22	10038	WASHER, LOCK 1/4	2
23	65021	CAP/PLUG 2" RED PLASTIC, FLANGED	1
24	10745	CLAMP, HOSE, SAE #32, ADJ. TO 2-1/2	2
25	77113	HOSE, FLEX 2"ID X 32"L	1
26	86333... 86326...	*HEAD ASSEMBLY COMPLETE W/ BEARING HUBRIGID STYLEFLEXIBLE STYLE *NOTE: REFER TO ILLUS. 3, 4, AND 5 FOR BREAKDOWNS	1
27	19166... 19167...	**DIAMOND DISC, ECONOMY (GENERAL PURPOSE) MEDIUM BOND, 7 MATRIX, 30-40 GRITSILVER 10" - 20 SEG. (INCLUDED W/ MACHINE)SILVER 10" - 10 SEG. (OPTIONAL) **NOTE: REFER TO ACCESSORY PRICE LIST OR CATALOG FOR OTHER DIAMOND DISC AVAILBLE.	1
28	86108	SCREW, FLAT HD SKT 3/8-24 X 3/4	4
29	10072	NUT 1/2-20	4
30	10045	WASHER, LOCK 1/2	4
31	86340	OPTIONAL 30 LB. WEIGHT	1



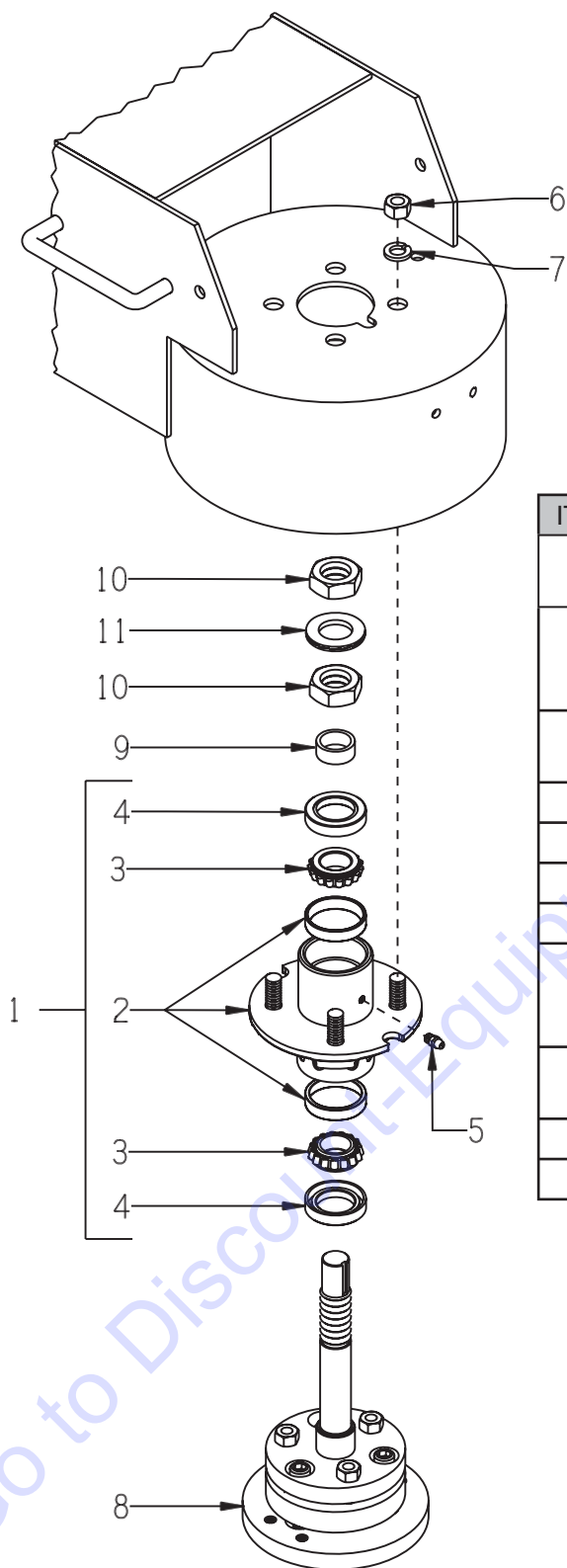
A Division of Equipment Development Company, Inc.

ILLUSTRATION 2 : WATER VALVE GROUPING



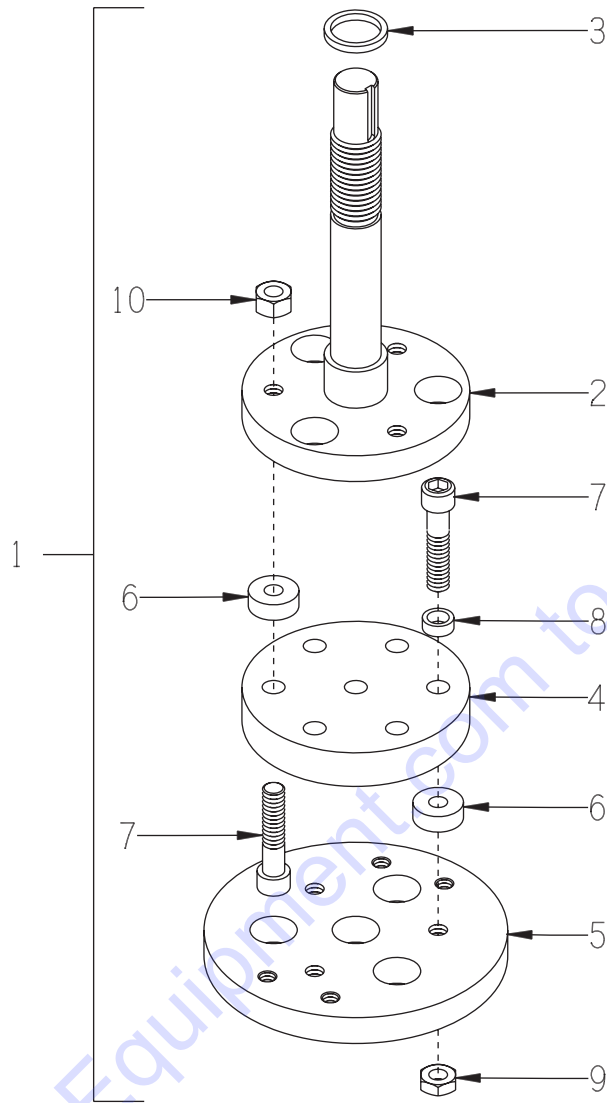
ITEM #	PART #	DESCRIPTION	QTY.
1	80021	CONN., SWIVEL FEM. 3/4HOSE X 1/2MPT (INCLUDES HOSE WASHER)	1
2	10711	VALVE, BALL 1/2 FPT	1
3	50075	BARB, 3/8 HOSE X 1/4MPT (BRASS)	1
4	50069	CLAMP, HOSE, SAE #6, ADJ. TO 13/16	2
5	86329	HOSE 3/8"ID X 19-1/4"L	1
6	11562	BARB ELBOW 90, 3/8HOSE X 1/8MPT (BRASS)	1
7	10864	NUT 1/8-27 PIPE THREAD (BRASS)	1

ILLUSTRATION 3 : BEARING HUB & HEAD ASSEMBLY

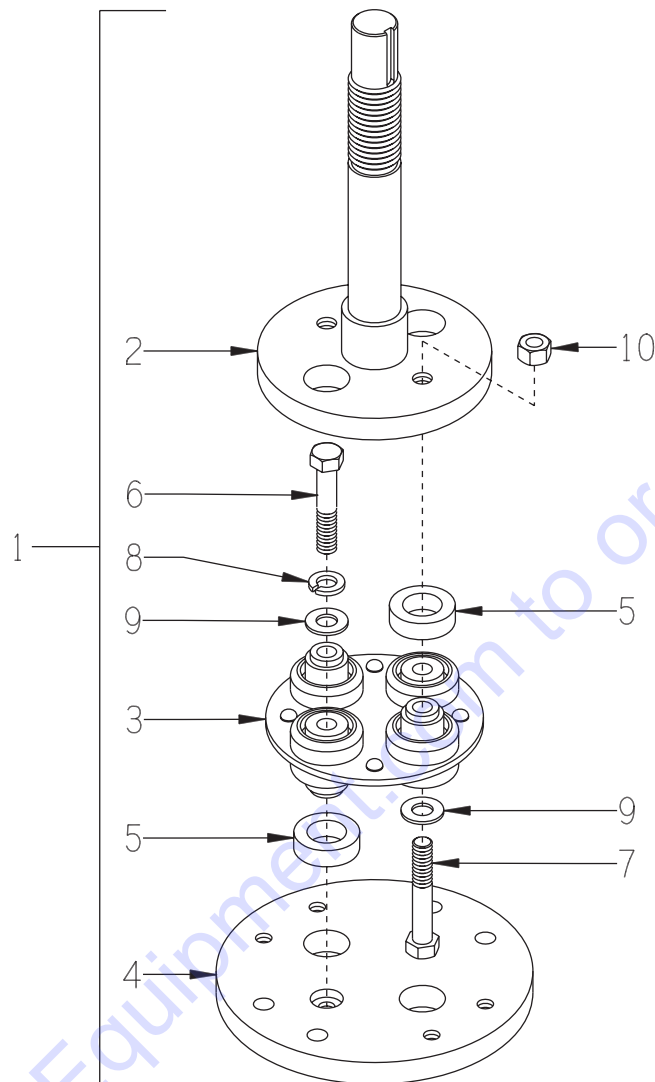


ITEM #	PART #	DESCRIPTION	QTY.
1	86320A	HUB ASSY. W/ BEARINGS & SEALS (INCLUDES ITEMS 2 THRU 5)	1
2	86320HG 86339	HUB W/ RACE CUPS & GREASE HOLE BEARING RACE CUP L44610 NOTE: RACE CUPS ARE PRESSED IN	1 2
3	86321	BEARING, TAPERED ROLLER 1"ID CONE ONLY	2
4	86322	SEAL, BEARING HUB, 1.25 X 1.986	2
5	10808	FITTING, GREASE 1/4-28 STRAIGHT	1
6	10072	NUT 1/2-20	4
7	10045	WASHER, LOCK 1/2	4
8	86333LB... 86326LB...	HEAD ASSY. LESS BEARINGRIGID STYLE (SEE ILLUS. 4)FLEX STYLE (SEE ILLUS. 5)	1
9	86319	SPACER, HUB BEARING 1-1/4"OD x 1"ID x 1/2"L	1
10	50019	NUT, JAM 1-14	2
11	86323	WASHER, NORD-LOCK 1" (PAIR)	1

ILLUSTRATION 4 : RIGID HEAD ASSEMBLY (STANDARD)



ITEM #	PART #	DESCRIPTION	QTY.
1	86333LB	HEAD ASSY. LESS BRG., RIGID (INCLUDES ITEMS 2-10)	1
2	86334	FLANGE W/ SHAFT, RIGID HEAD	1
3	68017	SPACER 1-1/4"OD X 1"ID X 5/32"THK.	1
4	86132S	SPACER, RIGID HEAD, STEEL	1
5	86133	MOUNTING DISC, RIGID HEAD	1
6	40329	BUSHING, RUBBER 1"OD X 3/8"ID X 3/8	6
7	86111	SCREW, SKT. HD. CAP 7/16-20 X 2 (Grade 8)	6
8	86112	SPACER, STL 5/8"OD X 7/16ID X 1/4TK	3
9	11641	NUT, JAM 7/16-20 (USE RED LOCTITE)	3
10	10481	NUT 7/16-20 (USE RED LOCTITE)	3

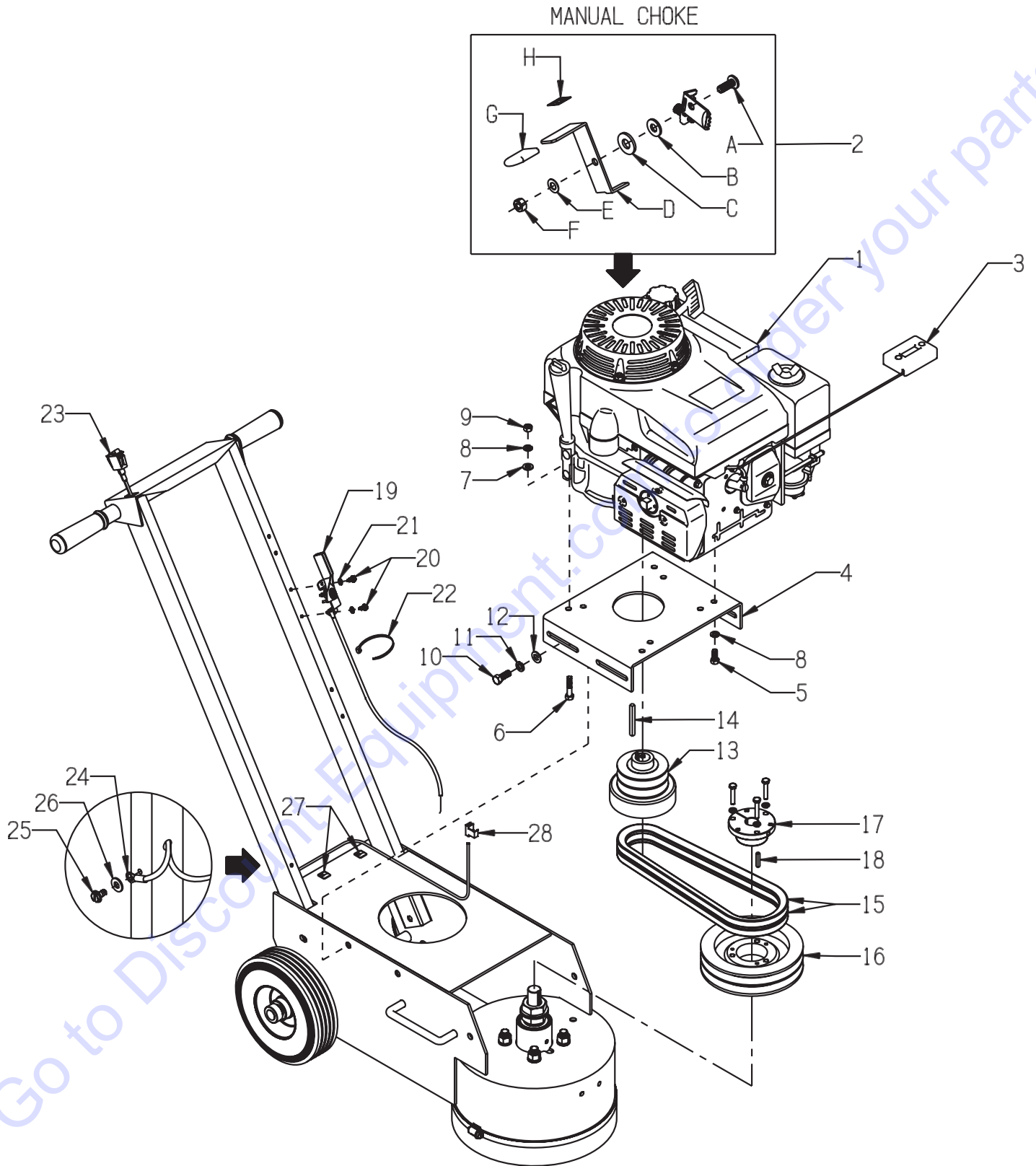
ILLUSTRATION 5 : FLEX HEAD ASSEMBLY (OPTIONAL)


ITEM #	PART #	DESCRIPTION	QTY.
1	86326LB	HEAD ASSY. LESS BRG., RIGID (INCLUDES ITEMS 2-10)	1
2	86308	FLANGE W/ SHAFT, FLEX HEAD	1
3	86017	COUPLING, MORFLEX 402.	1
4	86309	MOUNTING DISC, FLEXIBLE HEAD	1
5	86343	BUSHING, RUBBER 1-1/4 X 3/4 X 3/8	4
6	10030	SCREW, CAP 3/8-24 X 2 (USE RED LOCTITE)	2
7	10336	SCREW, CAP 3/8-24 X 2-1/4	2
8	10811	WASHER, LOCK 3/8	2
9	10025	WASHER, FLAT 3/8 SAE	2
10	10004	NUT, LOCK 3/8-24	3



A Division of Equipment Development Company, Inc.

ILLUSTRATION 6: ENGINE & BELT DRIVE GROUPING



PARTS FINDER

**Search Website
by Part Number**



**Search Manual
Library For Parts
Manual & Lookup Part
Numbers – Purchase
or Request Quote**

Search Manuals

Enter your information to help us find the right parts manual for your machine.

* Brand:

* Model:

* Serial:

* Part Number:

SEARCH

**Can't Find Part or
Manual? Request Help
by Manufacturer,
Model & Description**

Parts Order Form

Please fill in the following information to help us find the right part for your machine.

Manufacturer:	<input type="text"/>
Model:	<input type="text"/>
Description:	<input type="text"/>
Part Number:	<input type="text"/>
Quantity:	<input type="text"/>
Notes:	<input type="text"/>

Submit

Discount-Equipment.com is your online resource for quality parts & equipment.

Florida: **561-964-4949** Outside Florida TOLL FREE: **877-690-3101**

Need parts?

Click on this link: <http://www.discount-equipment.com/category/5443-parts/> and choose one of the options to help get the right parts and equipment you are looking for. Please have the machine model and serial number available in order to help us get you the correct parts. If you don't find the part on the website or on one of the online manuals, please fill out the request form and one of our experienced staff members will get back to you with a quote for the right part that your machine needs.

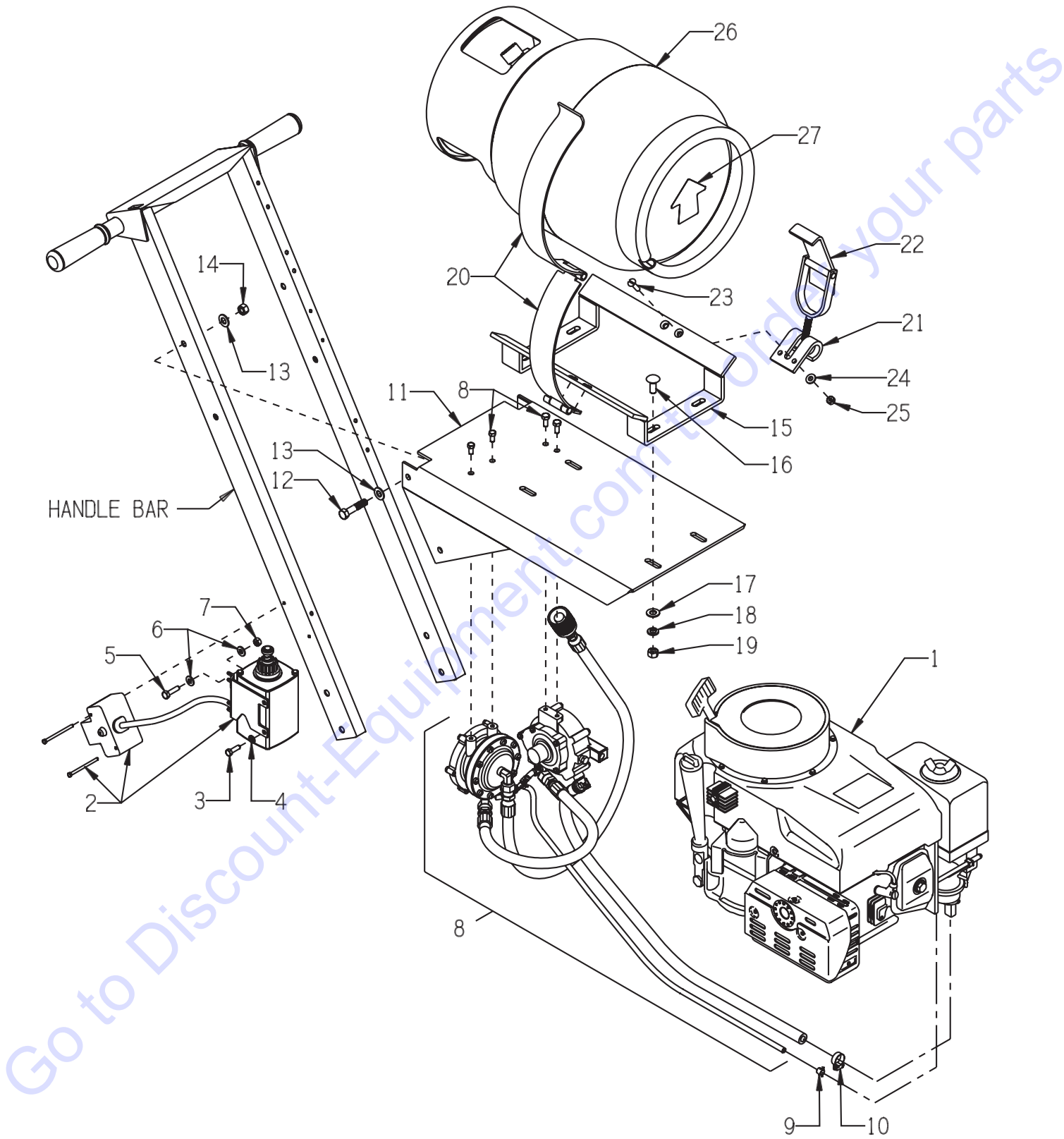
We sell worldwide for the brands: Genie, Terex, JLG, MultiQuip, Mikasa, Essick, Whiteman, Mayco, Toro Stone, Diamond Products, Generac Magnum, Airman, Haulotte, Barreto, Power Blanket, Nifty Lift, Atlas Copco, Chicago Pneumatic, Allmand, Miller Curber, Skyjack, Lull, Skytrak, Tsurumi, Husquvarna Target, Stow, Wacker, Sakai, Mi-T-M, Sullair, Basic, Dynapac, MBW, Weber, Bartell, Bennar Newman, Haulotte, Ditch Runner, Menegotti, Morrison, Contec, Buddy, Crown, Edco, Wyco, Bomag, Laymor, EZ Trench, Bil-Jax, F.S. Curtis, Gehl Pavers, Heli, Honda, ICS/PowerGrit, IHI, Partner, Imer, Clipper, MMD, Koshin, Rice, CH&E, General Equipment, Amida, Coleman, NAC, Gradall, Square Shooter, Kent, Stanley, Tamco, Toku, Hatz, Kohler, Robin, Wisconsin, Northrock, Oztec, Toker TK, Rol-Air, APT, Wylie, Ingersoll Rand / Doosan, Innovatech, Con X, Ammann, Mecalac, Makinex, Smith Surface Prep, Small Line, Wanco, Yanmar

PARTS LISTING - ILLUSTRATION 6 : ENGINE & BELT DRIVE GROUPING			
ITEM #	PART #	DESCRIPTION	QTY.
1	76004 15012	ENGINE, HONDA GASOLINE MODEL GXV340UT2-DX3 (SHOWN) PROPANE MODEL GXV340T2-DP23 (REFER TO ILLUS. 7)	1
2	15190	MANUAL CHOKE KIT FOR HONDA GXV340 (GASOLINE MODEL ONLY)	1
2-A	15185	SCREW, MACHINE M6 X 16MM PHILLIP HD	1
2-B	15188	WASHER .265"ID, .50"OD, .029-.035"THK	1
2-C	15187	WASHER, FIBER .75 X .25 X .093	1
2-D	15183	LEVER, CHOKE CONTROL, GXV340	1
2-E	15186	WASHER, BELLEVILLE .500 X.255 X.018	1
2-F	28026	NUT, HEX NYLON LOCK M6 X 1MM	1
2-G	15184	CAP, FLAT RED .062 X .75 X 1	1
2-H	91301	DECAL, CHOKE 5/8 X 5/8	1
3	15138	METER, HOUR, REDINGTON INDUCTIVE (OPTIONAL)	1
4	86311	MOUNT, ENGINE/MOTOR	1
5	10048	SCREW, CAP 5/16-24 X 3/4	2
6	10342	SCREW, CAP 5/16-18 X 1-1/2	2
7	10213	WASHER, FLAT 5/16 SAE	2
8	10801	WASHER, LOCK 5/16	4
9	10054	NUT 5/16-18	2
10	10055	SCREW, CAP 3/8-16 X 1	4
11	10811	WASHER, LOCK 3/8	4
12	10025	WASHER, FLAT 3/8 SAE	4
13	76024	CLUTCH, CENTRIFUGAL 3.5 X 2GR X 1	1
14	10071	KEY 1/4SQ X 2-1/2	1
15	10290	BELT B-35	2
16	75010	SHEAVE 6.9"OD X 2GR.B X SDS	1
17	10081M	BUSHING, SHEAVE SDS X 7/8 MODIFIED COUNTER BORED 1-3/4"DIA. X 3/8"DEEP	1
18	50523	KEY 3/16SQ X 1-1/8	1
19	40388	CABLE, THROTTLE, LEVER-TYPE 24"	1
20	10877	SCREW, CAP STSHW 10-24 X 1/2	2
21	10831	WASHER, LOCK, INT. TOOTH #10	2
22	10982	TIE, CABLE, BLACK NYLON 11-1/4"	1
23	15201A	SWITCH W/ WIRES, ROCKER RED ON-OFF	1
24	50084	TERM., RING #10 16-14GA. INSULATED	1
25	10831	WASHER, LOCK, INT. TOOTH #10	1
26	10877	SCREW, CAP STSHW 10-24 X 1/2	1
27	36042	CLIP, NATURAL CORD, 1/8" X 1/4"	3
28	10970	CONN., WIRE QUICK-SPLICE 18-14 GA.	1



A Division of Equipment Development Company, Inc.

ILLUSTRATION 7 : PROPANE GROUPING

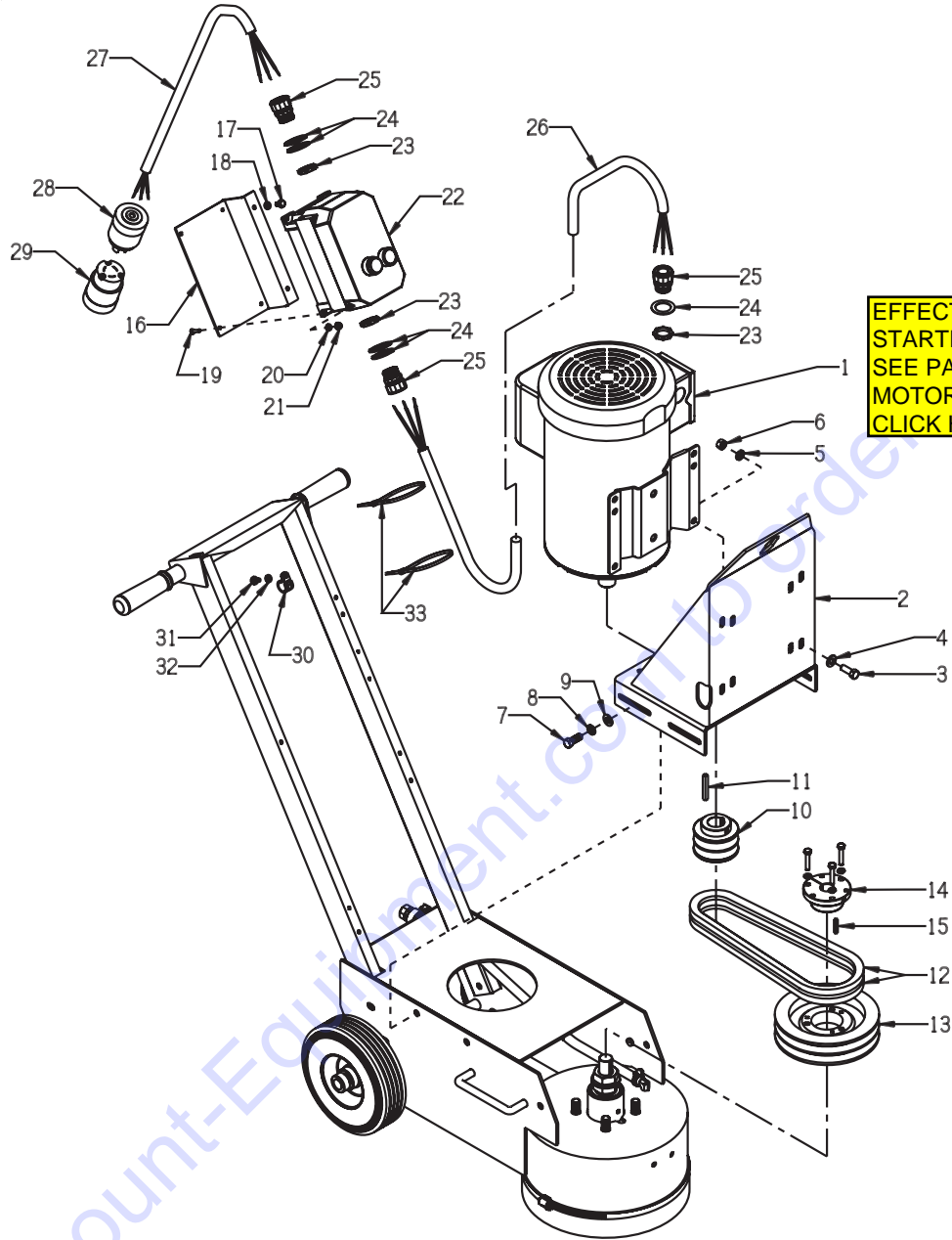


PARTS LISTING - ILLUSTRATION 7 : PROPANE GROUPING			
ITEM #	PART #	DESCRIPTION	QTY.
1	15012	ENGINE, HONDA PROPANE GXV340T2-DP23	1
2	15126	STARTER KIT, ELECTRIC 120 VOLT AC (INCLUDES POWER CORD - NOT SHOWN)	1
3	11634	SCREW, CAP M6 X 1.0P X 20MM	2
4	10038	WASHER, LOCK 1/4	2
5	10031	SCREW, CAP 1/4-20 X 1	2
6	10602	WASHER, FLAT 1/4 SAE (USE 2 FOR SHIMS WHEN REQ'D.)	4
7	10013	NUT 1/4-20	2
8	15102	VAPOR KIT FOR HONDA GXV340T2-DP23 KIT INCLUDES: HIGH PRESSURE VAPOR REGULATOR G-SE-50 2A-C (1 EA.) FUELOCK VAPOR FILTER G-SE-VFF30-2-4 (1 EA.) HIGH PRESSURE HOSE W/ FITTINGS 11-1/2" (1 EA.) HIGH PRESSURE HOSE W/ FITTINGS 38-1/2" (1 EA.) HOSE, PUSH LOCK 3/8"ID X 32"L (1 EA.) HOSE, VACUUM 3/16"ID X 48"L (1 EA.) REGO 7141F FEMALE COUPLING, BRASS (1 EA.) FITTING 1/4NPT X 3/8FLARE 90DEG, BRASS (3 EA.) FITTING 3/8" PIPE X 3/8" HOSE BARB ELBOW, BRASS . . . (1 EA.) FITTING 1/8NPT X 3/16" HOSE, ELBOW, BRASS (1 EA.) FITTING 1/8NPT X 3/16" HOSE BARB, BRASS (1 EA.) FITTING 3/16" TEE, NYLON (1 EA.)	1
9	11720	CLAMP, HOSE SPRING-TYPE 1/8" BLACK 02-041	6
10	50069	CLAMP, HOSE, SAE #6, ADJ. TO 13/16	2
11	86327	MOUNT, PROPANE TANK	1
12	10029	SCREW, CAP 3/8-24 X 1-3/4	4
13	10025	WASHER, FLAT 3/8 SAE	8
14	10004	NUT, LOCK 3/8-24	4
15	77061-1	PROPANE TANK CRADLE BRACKET ONLY	1
16	10802	BOLT, CARRIAGE 3/8-16 X 1 FULL THD.	4
17	10025	WASHER, FLAT 3/8 SAE	4
18	10811	WASHER, LOCK 3/8	4
19	10404	NUT 3/8-16	4
20	77061-2	PROPANE TANK STRAP W/ HINGE	1
21	77061-3	PROPANE TANK CLAW BRACKET	1
22	77061-4	PROPANE TANK TOGGLE CLAMP	1
23	11661	SCREW, FLAT HD SLT 1/4-20 X 1	2
24	10602	WASHER, FLAT 1/4 SAE	2
25	10861	NUT, KEPS 1/4-20	2
26	15130	PROPANE TANK 20LB. HORZ.	1
27	91122	DECAL, ARROW, RED, 3 X 3	1



A Division of Equipment Development Company, Inc.

ILLUSTRATION 8: MOTOR & BELT DRIVE GROUPING



EFFECTIVE FEB. 2011
 STARTING SERIAL #110210185
 SEE PARTS BULLETIN FOR
 MOTOR TYPE CHANGE.
 CLICK HERE.

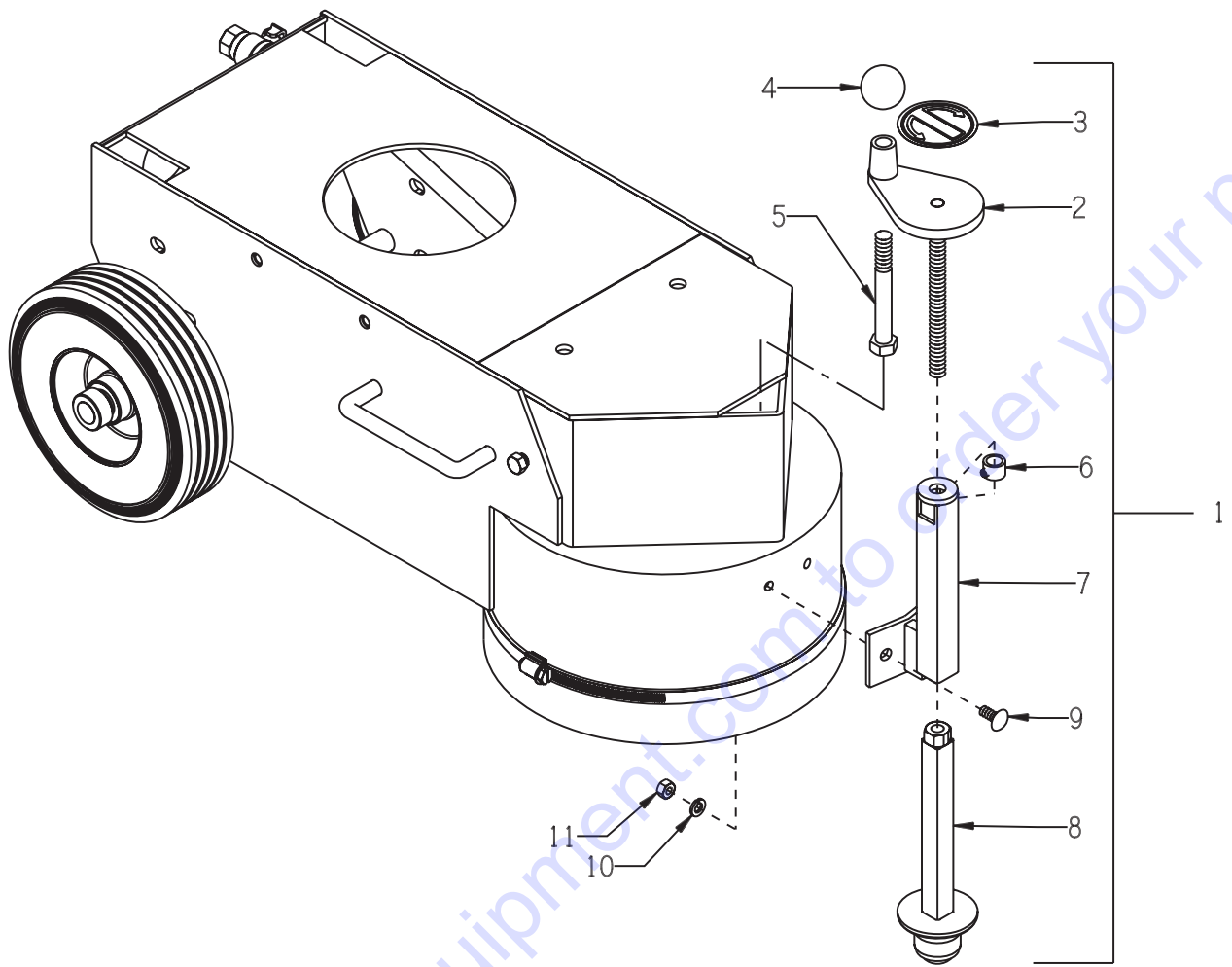
PARTS LISTING - ILLUSTRATION 8 : MOTOR & BELT DRIVE GROUPING			
ITEM #	PART #	DESCRIPTION	QTY.
1	16069	MOTOR, LEESON 5HP-1P-60HZ-3500RPM-230V (SHOWN) CAT. NO. 131549.00	1
	16521.....CAPACITOR, START, LEESON 003049.04 (390MFD 250V)	1
	16522.....CAPACITOR, RUN, LEESON 003050.05 (45MFD 370V)	1
	16020	MOTOR, BALDOR 5HP-3PH-50HZ-2850RPM-220/380/440V CAT. NO. M3613T-50	1
2	86404	MOUNT, MOTOR	1

PARTS LISTING CONTINUED - ILLUSTRATION 8 : MOTOR & BELT DRIVE GROUPING			
ITEM #	PART #	DESCRIPTION	QTY.
3	10021	SCREW, CAP 3/8-24 X 1	4
4	10025	WASHER, FLAT 3/8 SAE	4
5	10811	WASHER, LOCK 3/8	4
6	10014	NUT 3/8-24	4
7	10055	SCREW, CAP 3/8-16 X 1	4
8	10811	WASHER, LOCK 3/8	4
9	10025	WASHER, FLAT 3/8 SAE	4
10	79023	SHEAVE 3"OD X 2GR.B X 1-1/8"BORE	1
11	-----	KEY 1/4SQ X 1-3/4 (COMES WITH MOTOR)	1
12	10290 10035	BELT B-35 (60Hz MOTOR) 5L-330 (50Hz MOTOR)	2 2
13	75010 86344	SHEAVE 6.9"OD X 2GR.B X SDS (60Hz MOTOR) 4.55"OD X 2GR.B X 7/8"BORE (50Hz MOTOR)	1 1
14	10081M	BUSHING, SHEAVE SDS X 7/8 MODIFIED (60Hz MOTOR ONLY) COUNTER BORED 1-3/4"DIA. X 3/8"DEEP	1
15	50523	KEY 3/16SQ X 1-1/8	1
16	86027	MOUNTING BRKT., LOVATO M1 STARTER	1
17	10846	SCREW, CAP STSHW 1/4-20 X 1/2	2
18	10038	WASHER, LOCK 1/4	2
19	10362	SCREW, MACHINE 8-32 X 3/4	4
20	12112	WASHER, RIVET #9 5/32 X 7/16 X 3/64	4
21	10462	NUT, KEPS 8-32	4
22	16410 16460 16406 16405 16482	STARTER, LOVATO M1 1PH-60Hz-230V-19.8FLA (11-M1-BRF-P30-26-23060) 3PH-60Hz-230V-12FLA (11-M1-BRF-P23-15-23060) 3PH-60Hz-460V-6FLA & 3PH-50Hz-440V-6.5FLA (11-M1-BRF-P14-10-46060) 3PH-50Hz-220V-13FLA (11-M1-BRF-P23-23-23060) 3PH-50Hz-380V-7.6FLA (11-M1-BRF-P14-10-38050)	1
23	10740	CONDUIT LOCK NUT 3/4 NP	3
24	77081	WASHER, FLAT 1-1/2 X 1-1/16 X .06 ALUM.	5
25	10605	STRAIN RELIEF 3/4NPT X .650-.750"	3
26	86331 86332	WIRE HARNESS, STARTER/MOTOR 10/3 X 36"LOA (1-PHASE UNITS) 12/4 X 36"LOA (3-PHASE UNITS)	1
27	86026 86022	WIRE HARNESS, STARTER/PLUG 10/3 X 24"LOA (1-PHASE UNITS) 12/4 X 24"LOA (3-PHASE UNITS)	1
28	40037	PLUG, LOCKING 20A/250V L6-20P (1-PHASE 60Hz UNIT ONLY)	1
29	40000	CONNECTOR, LOCKING 20A/250V L6-20C (1-PHASE 60Hz UNIT ONLY)	1
30	11565	CLAMP, LOOM, 5/8" (SAE SIZE 10)	1
31	10831	WASHER, LOCK, INT. TOOTH #10	1
32	10877	SCREW, CAP STSHW 10-24 X 1/2	1
33	10982	TIE, CABLE, BLACK NYLON 11-1/4"	2



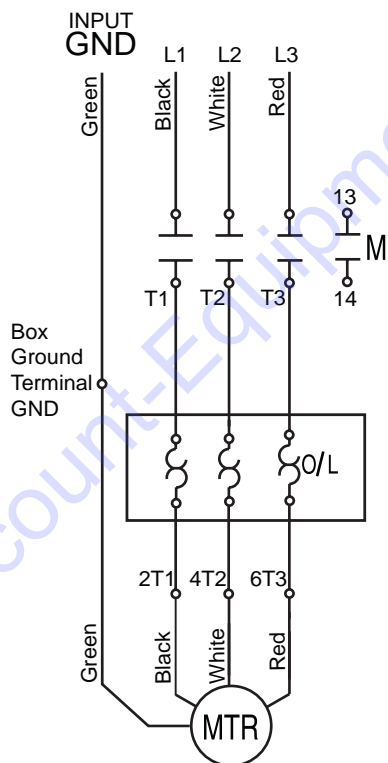
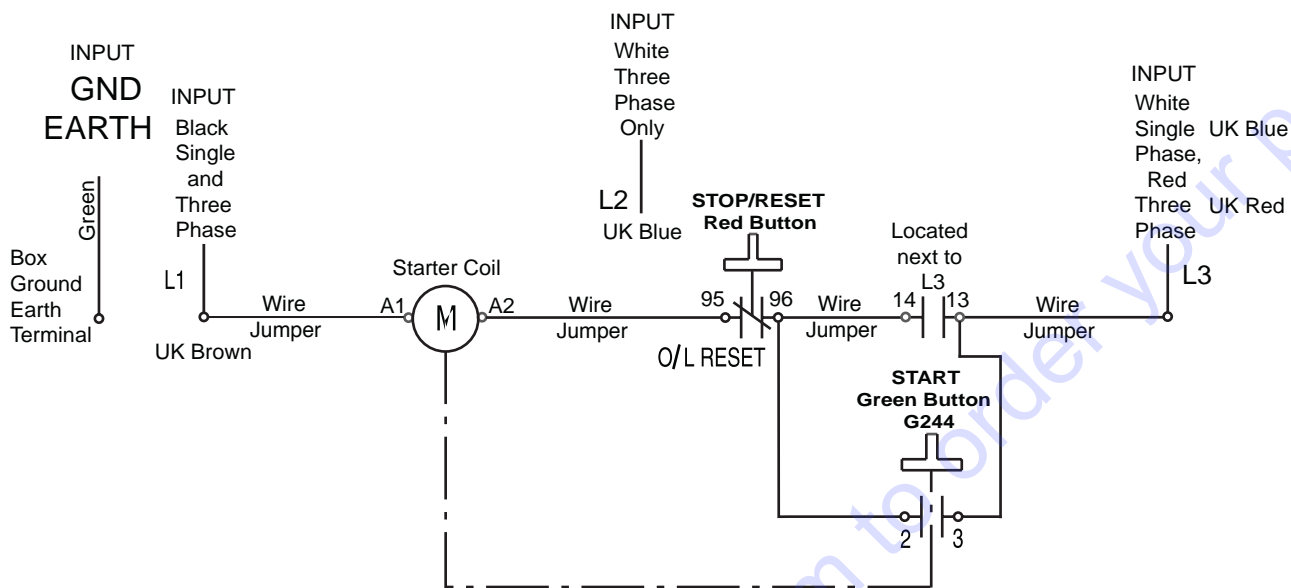
A Division of Equipment Development Company, Inc.

ILLUSTRATION 9: OPTIONAL BALL CASTER DEPTH STOP KIT

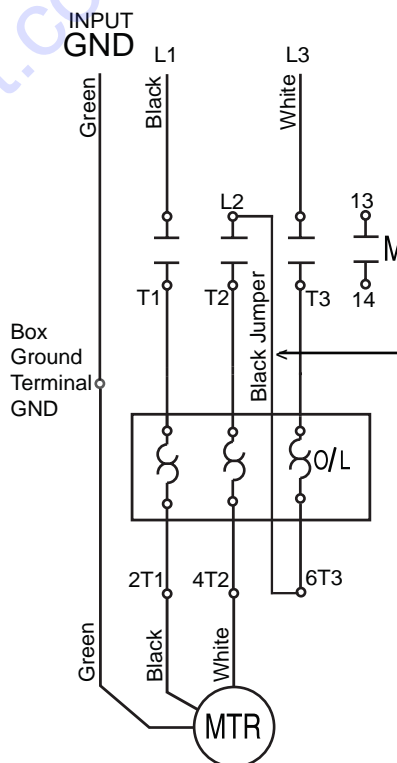


ITEM #	PART #	DESCRIPTION	QTY.
1	86330	BALL CASTER DEPTH STOP KIT (ITEMS 2 THRU 11)	1
2	86313	HANDWHEEL, SMALL W/ ROD 1/2-13 X 6-1/2	1
3	80007	DECAL, DEPTH STOP - DN/UP 2.5"	1
4	10104	KNOB, BALL 1-7/8 W/ 1/2-13THD, BLK.	1
5	81001	SCREW, CAP 1/2-13 X 4	1
6	86316	COLLAR, LOCKING 1/2", MODIFIED 11/16"OD	1
7	86314	SUPPORT, DEPTH STOP	1
8	86315	BALL-CASTER WELDMENT	1
9	10818	BOLT, CARRIAGE 5/16-18 X 3/4 F.T.	2
10	10801	WASHER, LOCK 5/16	2
11	10054	NUT 5/16-18	2

LOVATO STARTER BOX WIRING DIAGRAM



THREE PHASE

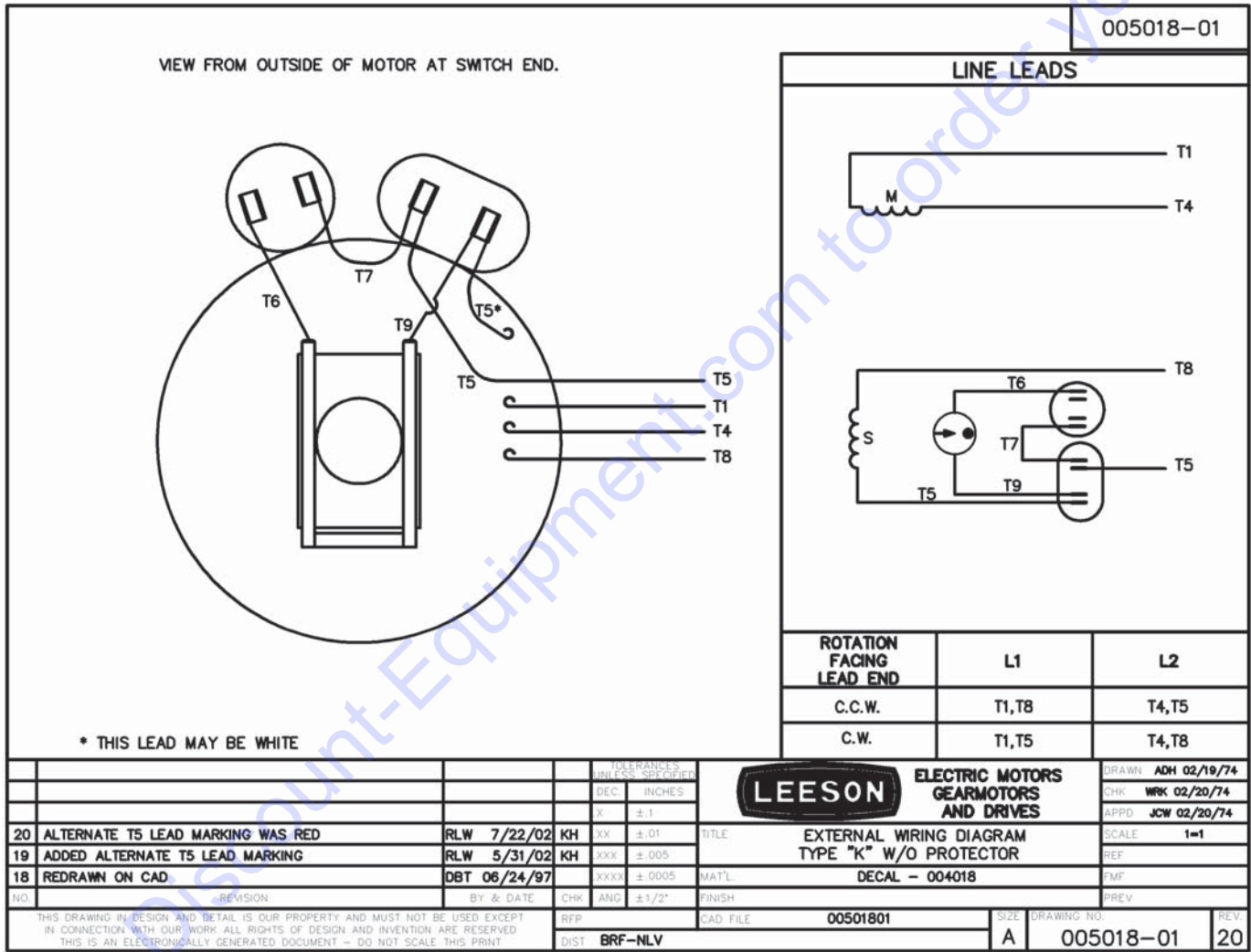


SINGLE PHASE

Black Jumper Wire must be same gauge as input and output AC wiring, Single Phase only! Not used on three phase systems!

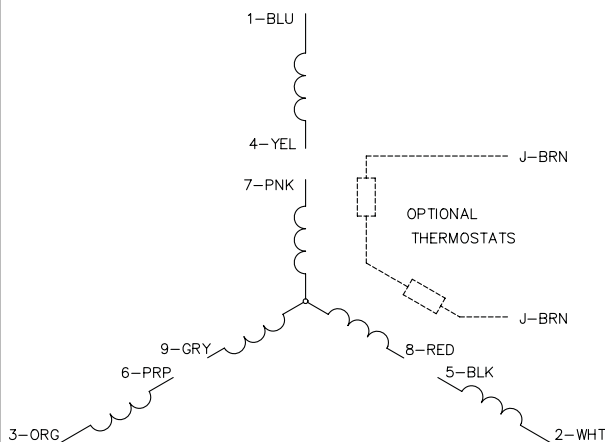
MOTOR WIRING DIAGRAM 1-PHASE 60 Hz 230V

USE CONNECTIONS FOR C.W. (CLOCK-WISE) ROTATION SHOWN BELOW
 L1 = BLACK, L2 = WHITE

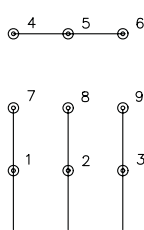


MOTOR WIRING DIAGRAM 3-PHASE 60 Hz 230/460V

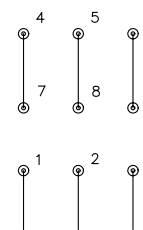
CD0005



LOW VOLTAGE (2Y)



HIGH VOLTAGE (1Y)



NOTES:

1. INTERCHANGE ANY TWO LINE LEADS TO REVERSE ROTATION.
2. OPTIONAL THERMOSTATS ARE PROVIDED WHEN SPECIFIED.
3. ACTUAL NUMBER OF INTERNAL PARALLEL CIRCUITS MAY BE A MULTIPLE OF THOSE SHOWN ABOVE.
4. LEAD COLORS ARE OPTIONAL. LEADS MUST ALWAYS BE NUMBERED AS SHOWN.

REV. DESC: REVISE TO SHOW OPTIONAL COLORS			
REV. LTR: E	BY: JLP	REVISED: 01/19/99 10:15	TDR: 0171435
900000		FILE: AAA00005140	MDL: -
		MTL: -	

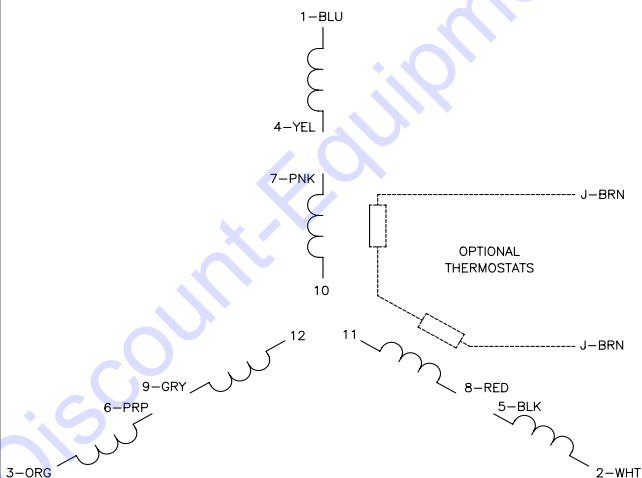
BALDOR ELECTRIC Co.

3PH, DV, 9 LEADS

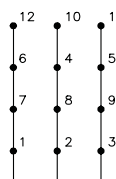
CD0005

MOTOR WIRING DIAGRAM 3-PHASE 50 Hz 220/380/440V

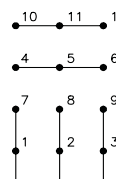
CD0044



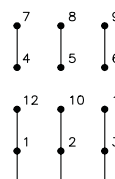
LOW VOLTAGE (2D)



MED. VOLTAGE (2Y)



HIGH VOLTAGE (1D)



NOTES:

1. INTERCHANGE ANY TWO LINE LEADS TO REVERSE ROTATION.
2. OPTIONAL THERMOSTATS ARE PROVIDED WHEN SPECIFIED.
3. ACTUAL NUMBER OF INTERNAL PARALLEL CIRCUITS MAY BE A MULTIPLE OF THOSE SHOWN ABOVE.
4. LEAD COLORS ARE OPTIONAL. LEADS MUST ALWAYS BE NUMBERED AS SHOWN.

REV. DESC: REVISE TO SHOW OPTIONAL COLORS			
REV. LTR: G	BY: JLP	REVISED: 01/19/99 4:09	TDR: 0171435
440000		FILE: AAA00008373	MDL: -
		MTL: -	

BALDOR ELECTRIC Co.

3PH, TV, 12 LEADS, 2D/2Y/1D

CD0044



A Division of Equipment Development Company, Inc.



A Division of Equipment Development Company, Inc.

PARTS BULLETIN

MOTOR TYPE CHANGE ON 5 H.P. 1-PHASE ELECTRIC EQUIPMENT EFFECTIVE FEB. 2011, STARTING W/ S/N 110210185

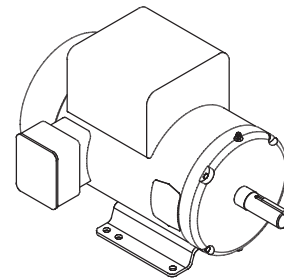
Baldor (Cat. No. L3608T) replaces Leeson Motor (Cat. No. 131549) on the following Equipment:

- 79500 CPM8 Scarifier/Planer
- 56900 TG10 Turbo Grinder
- 53600 4EC Concrete Floor Grinder
- 37300 DS18 Walk Behind Saw
- 42600 SB14 Walk Behind Saw
- 49700 C10 Crack Saw
- 21200 MS20 Masonry Saw

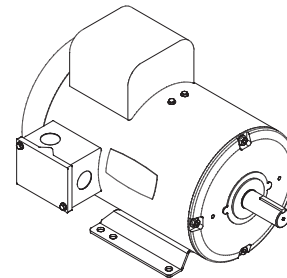
The Model Suffix for this Power Option will be 5B/230/1 (5HP Baldor/230 Volt/Single Phase).

Example: CPM8-5B/230/1

SPECIFICATION CHART		
	BALDOR Cat. No. L3608T	LEESON Cat. No. 131549
Part Number	81026	16069
Horse Power	5	5
Phase	1	1
Hertz	60	60
Volts	230	230
Full Load Amps	19.5	19.8
RPM	3450	3500
Frame	184T	184T
Shaft	1-1/8"	1-1/8"
Weight	86 Lbs.	93 Lbs.



BALDOR MOTOR



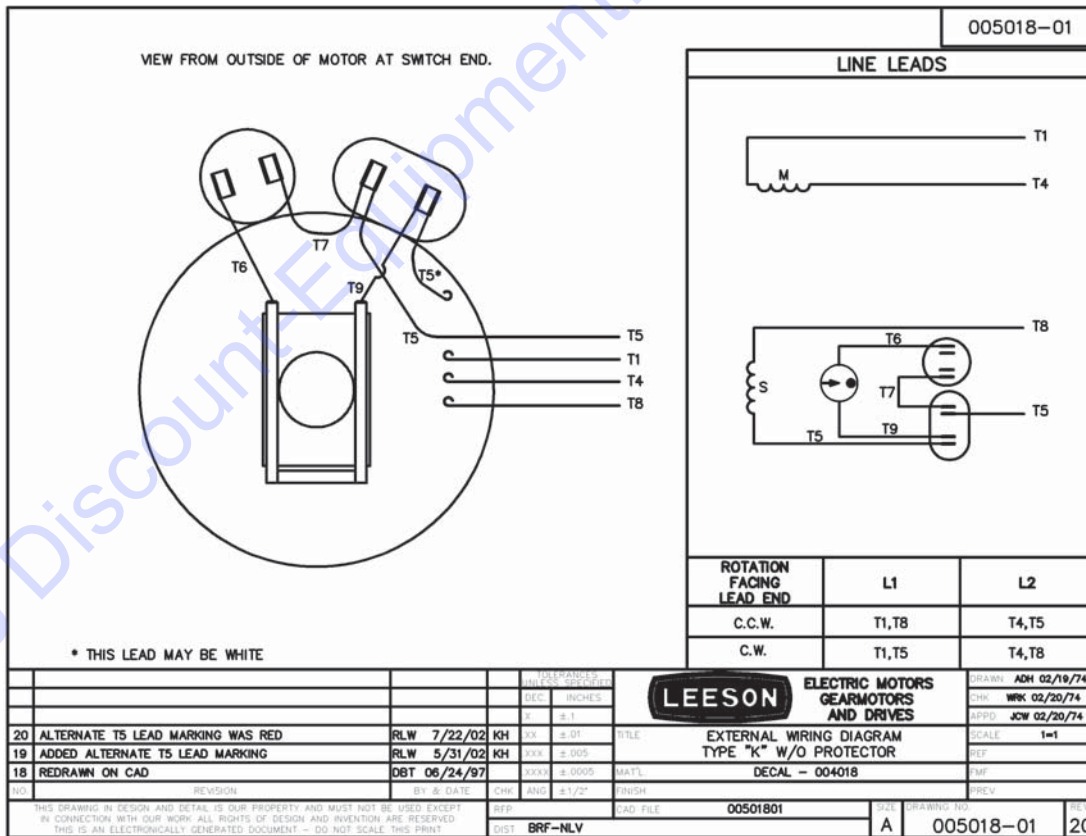
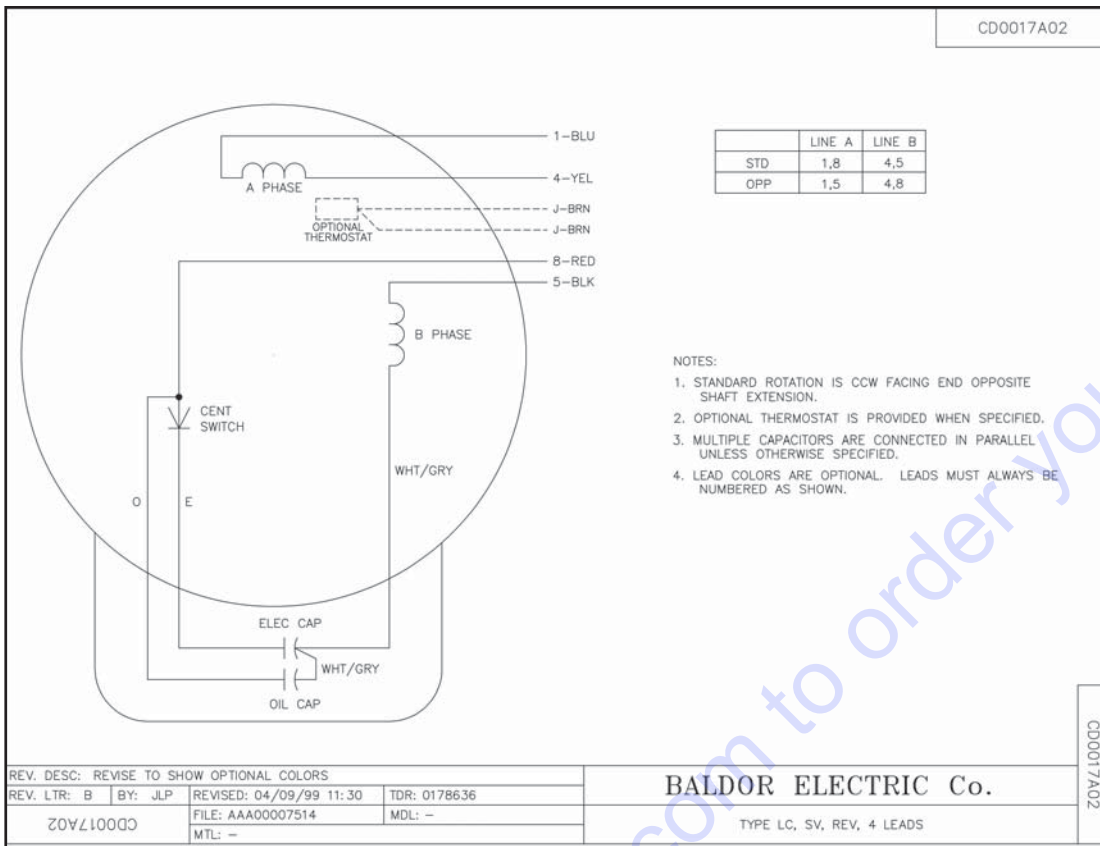
LEESON MOTOR

REPLACEMENT CAPACITORS FOR BALDOR MOTOR:

PART # 16121 - START CAPACITOR, BALDOR EC1161C06 161-193 MFD, 250V (2 REQ'D.)

PART # 16164 - RUN CAPACITOR, BALDOR OC3040F09SP 40MFD 370V (1 REQ'D.)

See the reverse side of this page for the Wiring Diagrams for these Motors.



PARTS FINDER

**Search Website
by Part Number**



**Search Manual
Library For Parts
Manual & Lookup Part
Numbers – Purchase
or Request Quote**

Search Manuals

Enter your information to help us find the right parts manual for your machine.

* Brand:

* Model:

* Serial:

* Part Number:

SEARCH

**Can't Find Part or
Manual? Request Help
by Manufacturer,
Model & Description**

Parts Order Form

Please fill in the following information to help us find the right part for your machine.

MANUFACTURER:

MODEL:

DESCRIPTION:

DATE:

NAME:

PHONE:

EMAIL:

ADDRESS:

CITY:

STATE:

ZIP:

REQUEST FOR QUOTE

Discount-Equipment.com is your online resource for quality parts & equipment.

Florida: **561-964-4949** Outside Florida TOLL FREE: **877-690-3101**

Need parts?

Click on this link: <http://www.discount-equipment.com/category/5443-parts/> and choose one of the options to help get the right parts and equipment you are looking for. Please have the machine model and serial number available in order to help us get you the correct parts. If you don't find the part on the website or on one of the online manuals, please fill out the request form and one of our experienced staff members will get back to you with a quote for the right part that your machine needs.

We sell worldwide for the brands: Genie, Terex, JLG, MultiQuip, Mikasa, Essick, Whiteman, Mayco, Toro Stone, Diamond Products, Generac Magnum, Airman, Haulotte, Barreto, Power Blanket, Nifty Lift, Atlas Copco, Chicago Pneumatic, Allmand, Miller Curber, Skyjack, Lull, Skytrak, Tsurumi, Husquvarna Target, Stow, Wacker, Sakai, Mi-T-M, Sullair, Basic, Dynapac, MBW, Weber, Bartell, Bennar Newman, Haulotte, Ditch Runner, Menegotti, Morrison, Contec, Buddy, Crown, Edco, Wyco, Bomag, Laymor, EZ Trench, Bil-Jax, F.S. Curtis, Gehl Pavers, Heli, Honda, ICS/PowerGrit, IHI, Partner, Imer, Clipper, MMD, Koshin, Rice, CH&E, General Equipment, Amida, Coleman, NAC, Gradall, Square Shooter, Kent, Stanley, Tamco, Toku, Hatz, Kohler, Robin, Wisconsin, Northrock, Oztec, Toker TK, Rol-Air, APT, Wylie, Ingersoll Rand / Doosan, Innovatech, Con X, Ammann, Mecalac, Makinex, Smith Surface Prep, Small Line, Wanco, Yanmar