



STARTING SERIAL NO. 1353

PARTS LIST MANUAL
MODEL TMC-7



7" TURBO COMBO GRINDER



PARTS FINDER

**Search Website
by Part Number**



**Search Manual
Library For Parts
Manual & Lookup Part
Numbers – Purchase
or Request Quote**

Search Manuals

Enter your information to help us find the right parts manual for your machine.

* Brand:

* Model:

* Serial:

* Part Number:

SEARCH

**Can't Find Part or
Manual? Request Help
by Manufacturer,
Model & Description**

Parts Order Form

Please fill in the following information to help us find the right part for your machine.

Manufacturer:	<input type="text"/>
Model:	<input type="text"/>
Description:	<input type="text"/>
Part Number:	<input type="text"/>
Quantity:	<input type="text"/>
Notes:	<input type="text"/>

Submit

Discount-Equipment.com is your online resource for quality parts & equipment.

Florida: **561-964-4949** Outside Florida TOLL FREE: **877-690-3101**

Need parts?

Click on this link: <http://www.discount-equipment.com/category/5443-parts/> and choose one of the options to help get the right parts and equipment you are looking for. Please have the machine model and serial number available in order to help us get you the correct parts. If you don't find the part on the website or on one of the online manuals, please fill out the request form and one of our experienced staff members will get back to you with a quote for the right part that your machine needs.

We sell worldwide for the brands: Genie, Terex, JLG, MultiQuip, Mikasa, Essick, Whiteman, Mayco, Toro Stone, Diamond Products, Generac Magnum, Airman, Haulotte, Barreto, Power Blanket, Nifty Lift, Atlas Copco, Chicago Pneumatic, Allmand, Miller Curber, Skyjack, Lull, Skytrak, Tsurumi, Husquvarna Target, Stow, Wacker, Sakai, Mi-T-M, Sullair, Basic, Dynapac, MBW, Weber, Bartell, Bennar Newman, Haulotte, Ditch Runner, Menegotti, Morrison, Contec, Buddy, Crown, Edco, Wyco, Bomag, Laymor, EZ Trench, Bil-Jax, F.S. Curtis, Gehl Pavers, Heli, Honda, ICS/PowerGrit, IHI, Partner, Imer, Clipper, MMD, Koshin, Rice, CH&E, General Equipment, Amida, Coleman, NAC, Gradall, Square Shooter, Kent, Stanley, Tamco, Toku, Hatz, Kohler, Robin, Wisconsin, Northrock, Oztec, Toker TK, Rol-Air, APT, Wylie, Ingersoll Rand / Doosan, Innovatech, Con X, Ammann, Mecalac, Makinex, Smith Surface Prep, Small Line, Wanco, Yanmar

READ AND UNDERSTAND THE OPERATORS INSTRUCTION MANUAL THOROUGHLY BEFORE ATTEMPTING TO OPERATE THIS EQUIPMENT. Death or serious injury could occur if this machine is used improperly.



SAFETY MESSAGES



The safety instructions are preceded by a graphic alert message of DANGER, WARNING, or CAUTION.



Indicates an imminent hazard which, if not avoided, will result in death or serious injury.



Indicates an imminent hazard which, if not avoided, can result in death or serious injury.



Indicates hazards which, if not avoided, could result in serious injury and or damage to the equipment.

GASOLINE

Powered Equipment



- Do not operate gasoline powered equipment without adequate ventilation. Carbon monoxide is an invisible, odorless gas that can kill.

ELECTRICAL

Powered Equipment



- ELECTRICAL HAZARD** - Be sure equipment is properly grounded. Failure to comply could kill or result in serious injury.



The engine exhaust from this product contains chemicals known to the State of California to cause cancer, birth defects or other reproductive harm.

GENERAL INSTRUCTIONS



- You must read and understand the operators instruction manual and all other manuals associated with this machine. For your safety and the safety of others around you, it is extremely important to fully understand how to operate this machine in the way it was intended. Different model machines or older/newer versions of the same model may have different parts and controls that you need to understand. If instructions are not readable or available DO NOT USE this machine and contact Discount-equipment for a replacement Manual.
- You must be able to physically handle the bulk weight and power of this machine. If not properly controlled this machine can cause death or serious injury.
- Do not operate this machine in an impaired mental state. You must be able to exercise good judgement and reactions to maintain a safe working environment.
- This is a "one person" machine which means only one operator can be operating the machine at any one time. For the safety of others, maintain a safe operating distance to other personnel. Your work area should be defined and appropriately marked so bystanders and coworkers do not stand or walk near this machine and end up seriously injured by flying debris or exposing them to harmful noise or dust.
- This equipment is for Commercial use. Although this is a "one person" machine your work team should understand how to shut this machine off and quickly get medical help if an accident strikes the operator.
- Keep all guards in place during operation. The guards are to provide protection from inadvertent contact with dangerous moving parts, pinch points, or hot surfaces.
- Wear appropriate Personal Protective Equipment (PPE) including safety glasses, safety boots, work gloves, respiratory protection,

- hearing protection, and head protection. Do not wear loose clothing that can get tangled in moving parts. Failure to do so could result in dismemberment or death. **Wear an approved respirator when removing hazardous materials or when grinding/cutting dry materials. Some dust particles such as concrete dust can contain silicate particles which can cause silicosis (a very serious lung disease). Contact NIOSH or OSHA for further details. When wet grinding/cutting, avoid contact with the concrete/asphalt slurry which can cause serious skin irritations.**
- You must maintain this machine per the maintenance schedule in the operator manual. Remember before adjusting, servicing, or fueling this machine, disconnect the source of power to the machine by disconnecting the spark plug (Gas models), or by unplugging the electrical power cord (electric models) or air hose (Pneumatic models) AT THE MACHINE so you can assure yourself it remains unplugged while you are working on it. Do not modify this machine. Use only genuine EDCO parts and accessories. Repairs and service should be performed by approved EDCO dealers or authorized technicians.
- You should look carefully around the area before you begin work so you can identify potential hazards such as deck inserts, pipes, columns, openings, electrical cords or outlets, or any other objects protruding from the slab surface.
- This machine has no brain so you must use your own. There is no substitute for safety. The safety decals on the machine are to serve as a reminder for information you must already know before you begin using this machine. Take a moment to reread the safety decals each time you use the machine. If your machine is missing any decals, contact Discount-equipment for a replacement.

PARTS LIST MANUAL

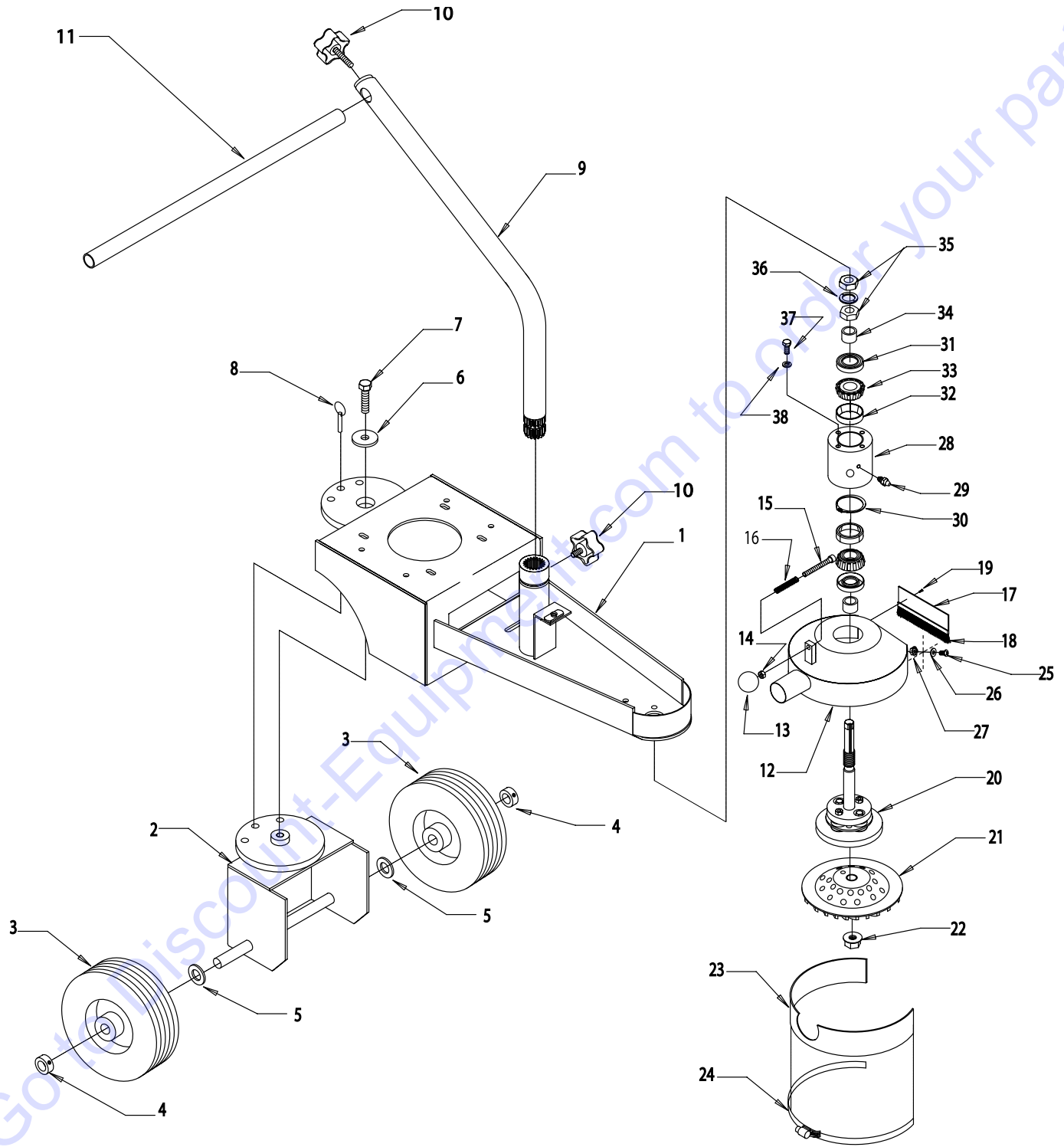
MODEL TMC-7

SECTION	PAGE NO.
SAFETY MESSAGES & GENERAL INSTRUCTIONS	2
HOW TO ORDER REPLACEMENT PARTS	3
ILLUSTRATION # 1: MAIN ASSEMBLY GROUPING	4
PARTS LISTING - ILLUSTRATION # 1: MAIN ASSEMBLY GROUPING	5
ILLUSTRATION # 2: FLEXIBLE HEAD ASSEMBLY.....	6
PARTS LISTING - ILLUSTRATION # 2: FLEXIBLE HEAD ASSEMBLY.....	7
ILLUSTRATION # 3: ENGINE GROUPING	8
PARTS LISTING - ILLUSTRATION # 3: ENGINE GROUPING	9
ILLUSTRATION # 4: MOTOR GROUPING	10
PARTS LISTING - ILLUSTRATION # 4: MOTOR GROUPING	11
LIMITED EQUIPMENT WARRANTY	BACK COVER

7" TURBO COMBO GRINDERS		
PART #	MODEL	POWER OPTION
57100	TMC7-5.5H	GASOLINE ENGINE, HONDA 5.5HP GXV160-KN12
57200	TMC7-2L	ELECTRIC MOTOR, LEESON 2HP 115/230V 18.4/9.2 AMP



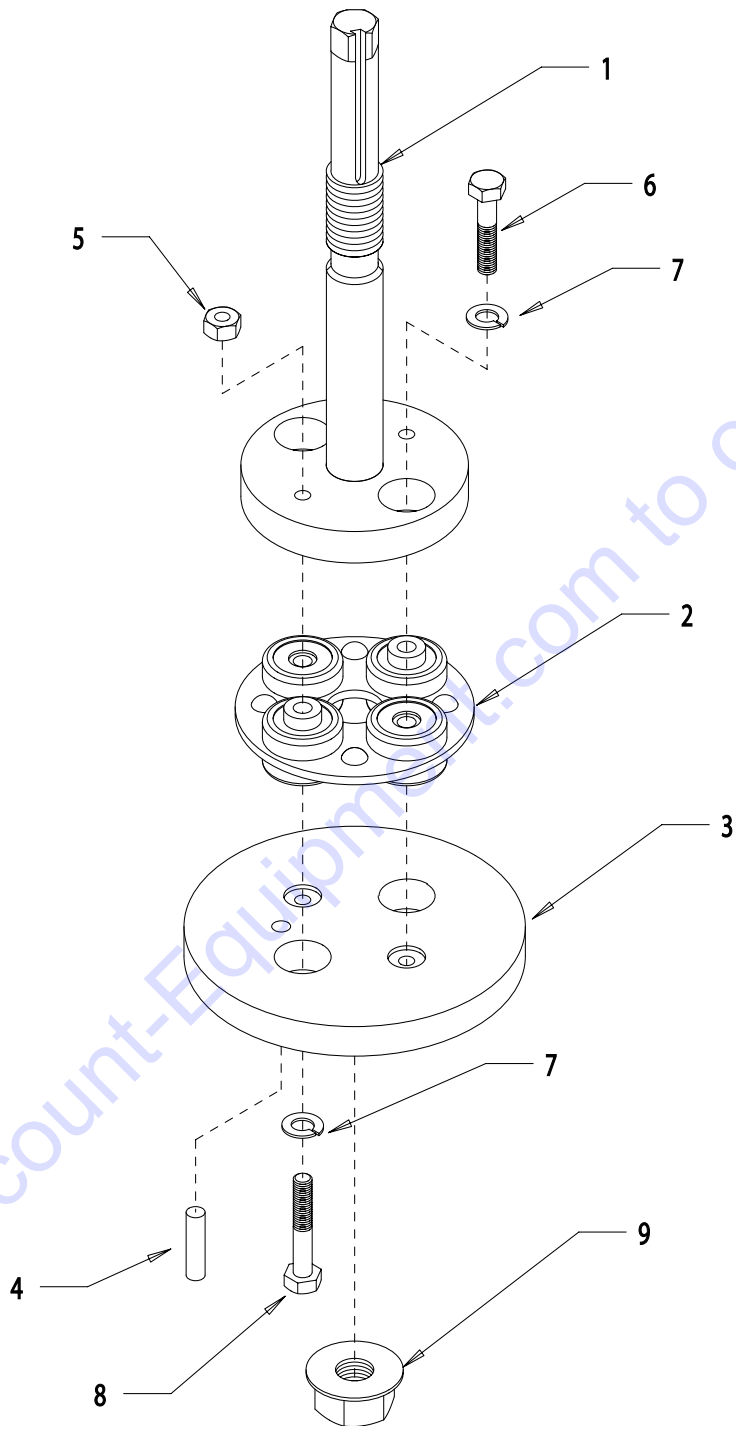
ILLUSTRATION # 1: MAIN ASSEMBLY GROUPING



PARTS LISTING - ILLUSTRATION # 1: MAIN ASSEMBLY GROUPING

ITEM #	PART #	DESCRIPTION	QTY.
1	72201	MAINFRAME	1
2	72202	CHASSIS, WHEEL	1
3	79013	WHEEL, 8 x 2-1/2 x 3/4 BRG.	2
4	10428	COLLAR, LOCKING 3/4" ID	2
5	10009	WASHER, FLAT 3/4	2
6	72224	WASHER, WHEEL CHASSIS	1
7	11670	BOLT, TAP 1/2-20 x 2, FULL THREAD	1
8	10125	PIN, DETENT RING 1/2 x 1-1/2 E.L.	1
9	72203	HANDLE, MAIN TUBE	1
10	51230	KNOB, STAR CLAMPING 3/8-16 x 1" STUD	2
11	72204	HANDLE GRIP TUBE	1
12	72206	COVER, DISC	1
13	10920	KNOB, BALL 1-3/8 w/ 5/16-24 THD., BLK.	1
14	10424	NUT 5/16-24	1
15	11671	SCREW, SKT. HD. CAP 5/16-24 x 2-1/2	1
16	72222	SPRING, COMP. .438" OD x 1.438" FL	1
17	72218	BRUSH EXTRUSION, ALUM. 1-1/2H x 4-1/2"	1
18	72219	BRUSH, TRIM 1 x 48, .010 BLACK NYLON 4-1/2	1
19	10128	RIVET, BLIND 1/8 x .250L x .262 HD	2
20	72207	HEAD ASSEMBLY (SEE ILLUS. #2 FOR BREAKDOWN)	1
21	72030	7" DIAMOND CUP WHEEL, DRY GRINDING 5/8" ARBOR w/ PIN HOLE, 40-50 GRIT WHEEL (STD.)	1
22	72021	NUT, FLANGE 5/8-11 (INCLUDED w/ #20 HEAD ASSY.)	1
23	72216	SKIRT, RUBBER 1/8 x 2 x 20	1
24	72217	CLAMP, RUBBER SKIRT - MODIFIED #72110	1
25	11578	SCREW, SKT. BUTTON HD. 1/4-20 x 1/2	2
26	10213	WASHER, FLAT 5/16	2
27	10861	NUT, KEPS 1/4-20	2
28	72210	HUB, BEARING	1
29	10808	FITTING, GREASE, STRAIGHT 1/4-28	1
30	72212	RING, EXT. RETAINING 2"	1
31	72211	SEAL, BEARING HUB	2
32	3686	BEARING CUP, TAPERED ROLLER LM11910	2
33	3687	BEARING, TAPERED ROLLER 3/4ID CONE LM11949	2
34	72209	SPACER, 1" OD x 3/4 ID x 11/16 L, HARDENED	2
35	10403	NUT, JAM 3/4-10	2
36	72215	WASHER, NORD-LOCK 3/4" (PAIR)	1
37	10053	SCREW, CAP 5/16-18 x 3/4	4
38	10801	WASHER, LOCK 5/16	4

ILLUSTRATION # 2: FLEXIBLE HEAD ASSEMBLY

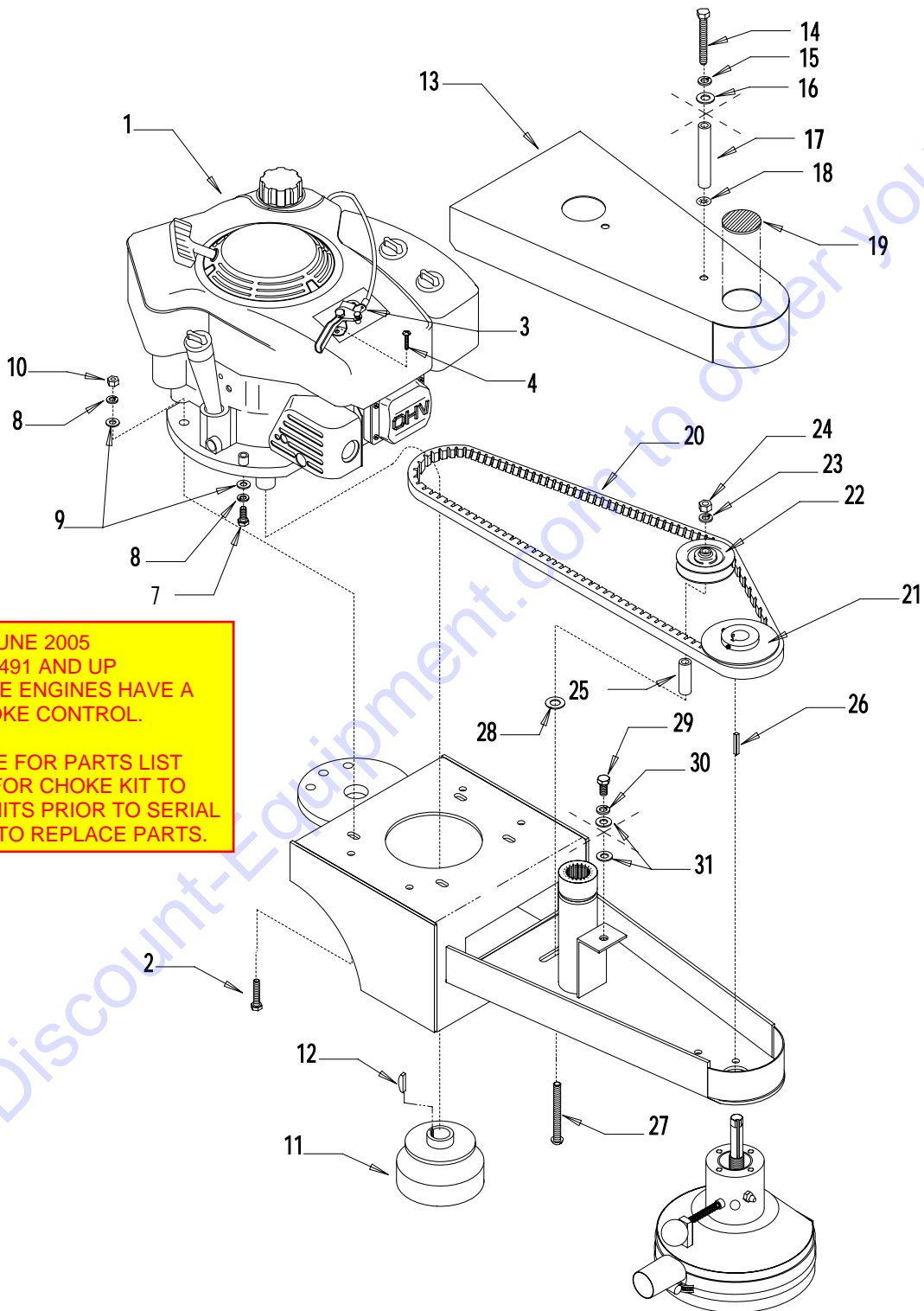


Go to Discount-Equipment.com to order your parts

PARTS LISTING - ILLUSTRATION # 2: FLEXIBLE HEAD ASSEMBLY

ITEM #	PART #	DESCRIPTION	QTY.
1-9	72207	HEAD ASSEMBLY (REFER TO ILLUS. #1, ITEM 20)	1
1	72208	FLANGE w/ SHAFT	1
2	72025	COUPLING, MORFLEX 302	1
3	72024	FLANGE, CUP WHEEL MOUNTING (FLEX)	1
4	10049	PIN, ROLL 1/4 x 1	1
5	11662	NUT, HEX NYLON JAM 1/4-28	2
6	11656	SCREW, CAP 1/4-28 x 1-1/4, GRADE 8	2
7	10038	WASHER, LOCK 1/4	4
8	11657	SCREW, CAP 1/4-20 x 1-1/2, GRADE 8	2
9	72021	NUT, FLANGE 5/8-11	1

ILLUSTRATION # 3: ENGINE GROUPING



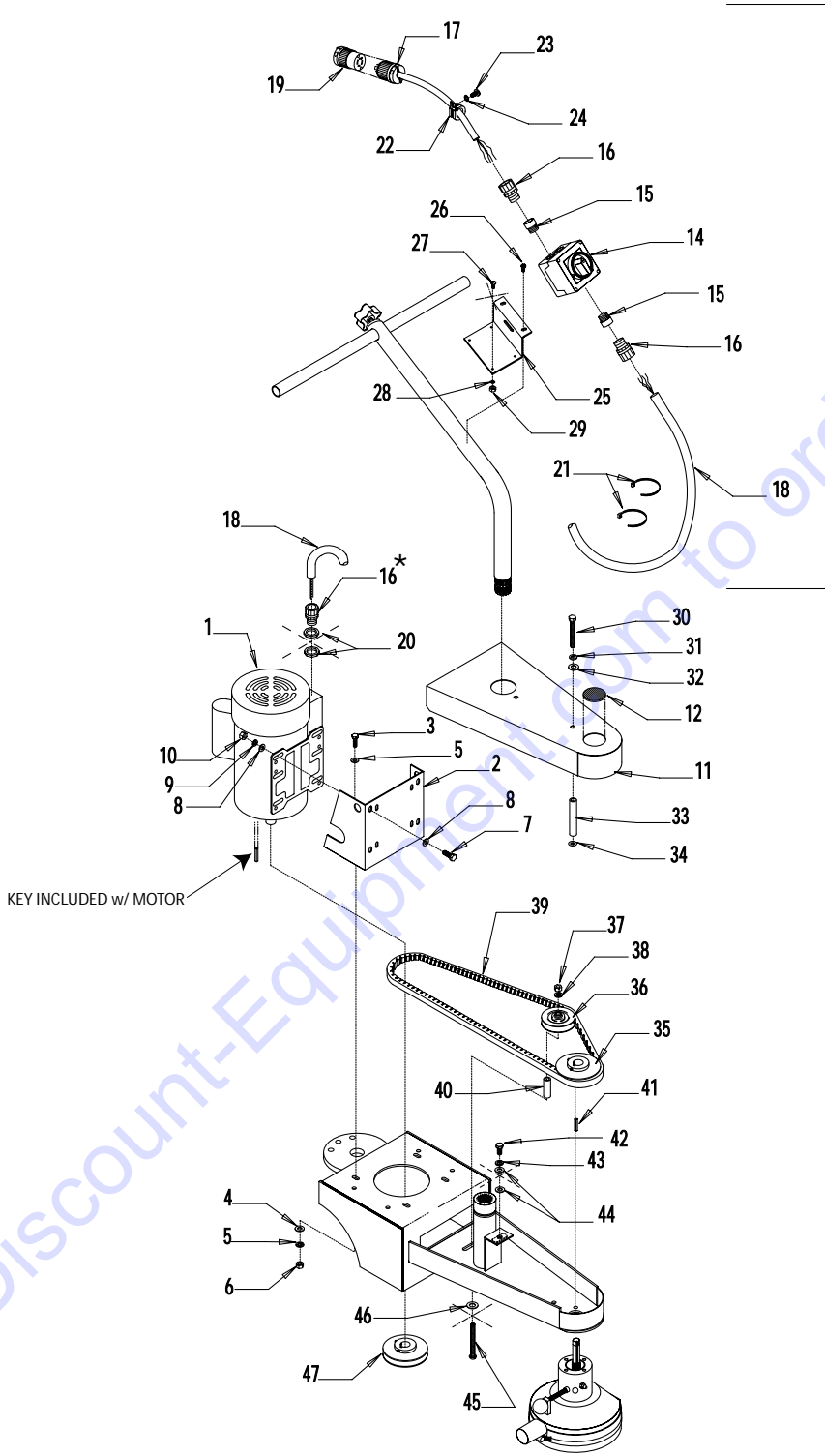
EFFECTIVE JUNE 2005
 SERIAL NO. 1491 AND UP
 ALL GASOLINE ENGINES HAVE A
 MANUAL CHOKE CONTROL.

SELECT HERE FOR PARTS LIST
 ADDENDUM FOR CHOKE KIT TO
 UPGRADE UNITS PRIOR TO SERIAL
 NO. 1491 OR TO REPLACE PARTS.



PARTS LISTING - ILLUSTRATION 3: ENGINE GROUPING			
ITEM #	PART #	DESCRIPTION	QTY.
1	76020	ENGINE, HONDA 5.5HP GXV160-KN12	1
2	10342	SCREW, CAP 5/16-18 x 1-1/2	1
3	40388	CABLE, THROTTLE, LEVER-TYPE 24"	1
4	10830	SCREW, MACHINE 10-32 x 1/2	2
5	10455	WASHER, LOCK, EXT. TOOTH #10 (NOT SHOWN)	2
6	10832	NUT 10-32 (NOT SHOWN)	2
7	10048	SCREW, CAP 5/16-24 x 3/4	3
8	10801	WASHER, LOCK 5/16	4
9	10213	WASHER, FLAT 5/16	4
10	10054	NUT 5/16-18	1
11	77024	CLUTCH, CENTRIFUGAL 3.5 x 1Gr. x 7/8	1
12	10019	KEY, WOODRUFF 5/32 x 5/8, # 505	1
13	72205	COVER, BELT	1
14	10349	BOLT, TAP 3/8-16 x 4-1/2"	1
15	10811	WASHER, LOCK 3/8	1
16	10025	WASHER, FLAT 3/8	1
17	72225	SPACER, BELT COVER	1
18	10468	NUT, PUSH 3/8" (RETAINING CLIP)	1
19	65022	PLUG, HOLE 2"	1
20	10282	BELT BX-53 COG	1
21	72223	SHEAVE 4" OD x 1Gr.B x 5/8 BORE	1
22	50115	IDLER PULLEY 3" OD x 1Gr. AB x 3/8" BORE	1
23	10811	WASHER, LOCK 3/8	1
24	10404	NUT 3/8-16	1
25	72213	SPACER, 5/8 x 3/8 x 1-1/2	1
26	10016	KEY 3/16 SQ. x 1-1/2	1
27	10909	BOLT, CARRIAGE 3/8-16 x 3 FULL THREAD	1
28	10040	WASHER, GARRETT 17/32 ID	1
29	10907	SCREW, CAP 3/8-16 x 3/4	1
30	10811	WASHER, LOCK 3/8	1
31	10025	WASHER, FLAT 3/8	2

ILLUSTRATION # 4: MOTOR GROUPING

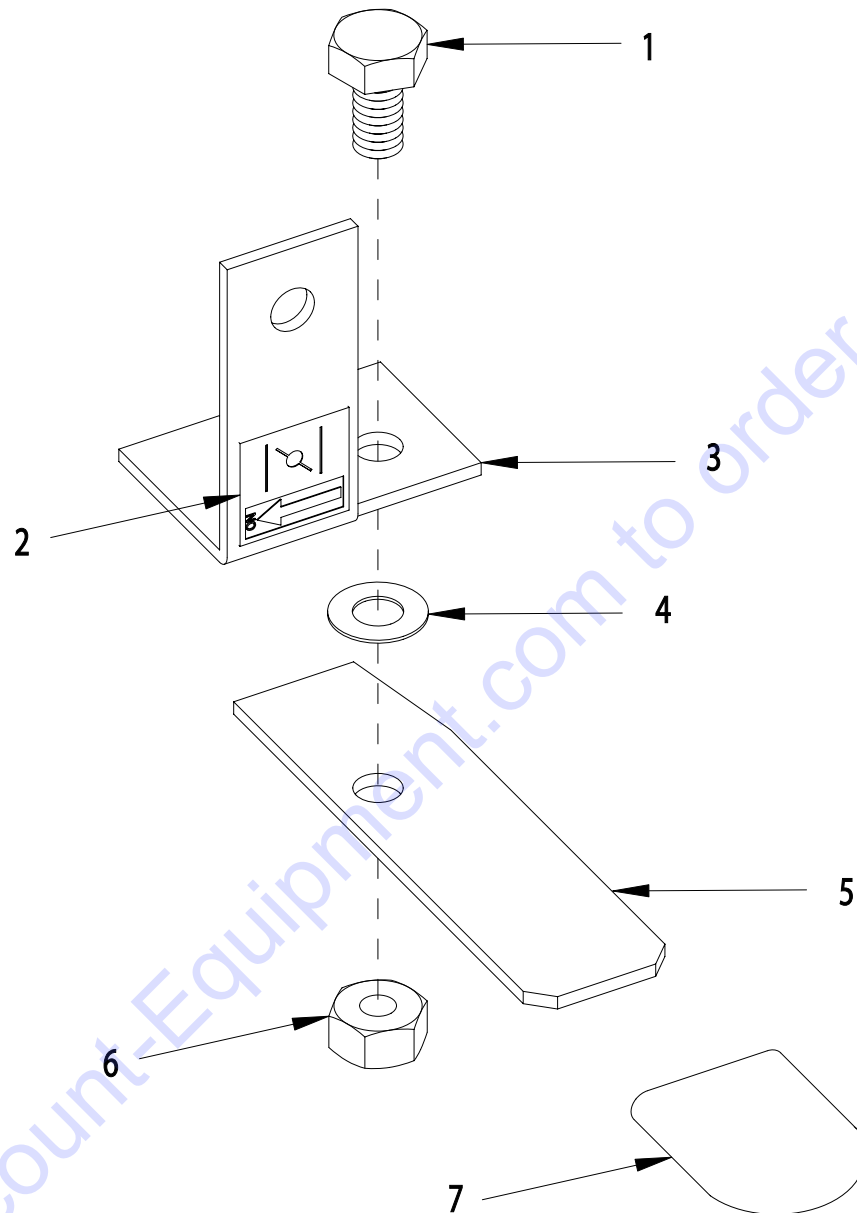


PARTS LISTING - ILLUSTRATION # 4: MOTOR GROUPING			
ITEM #	PART #	DESCRIPTION	QTY.
1	16037	MOTOR, LEESON 2HP, 1PH, 60Hz, 1740 RPM	1
2	86312	MOUNT, MOTOR	1
3	10021	SCREW, CAP 3/8-24 x 1	4
4	10025	WASHER, FLAT 3/8	4
5	10811	WASHER, LOCK 3/8	4
6	10014	NUT 3/8-24	4
7	10806	SCREW, CAP 5/16-18 x 1	4
8	10213	WASHER, FLAT 5/16	8
9	10801	WASHER, LOCK 5/16	4
10	10054	NUT 5/16-18	4
11	72205	COVER, BELT	1
12	65022	PLUG, HOLE 2"	1
13	77028	SWITCH & WIRE HARNESS ASSEMBLY (ITEMS 14-18)	1
14	77043	SWITCH, ROTARY CAM ON/OFF, LOVATO w/ 2 ADAPTORS	1
15	-----	ADAPTOR	1
16	41130	STRAIN RELIEF 1/2 NPT x .550-.650 (ONLY 2 INCL. w/ # 13)	3
17	40042	PLUG, LOCKING 20A/125V	1
18	77045	WIRE HARNESS 12/3 x 39" LOA	1
19	40041	PLUG, CONNECTOR, LOCKING 20A/125V	1
20	10790	CONDUIT, LOCK NUT 1/2 NP	2
21	10982	TIE, CABLE, BLACK NYLON, 11-1/4	2
22	11566	CLAMP, LOOM 1-3/4	1
23	11674	SCREW, CAP STSHW, 10-24 x 3/8	1
24	10831	WASHER, INT. TOOTH #10	1
25	77042	BRACKET, LOVATO SWITCH BOX	1
26	10846	SCREW, CAP STSHW 1/4-20 x 1/2	2
27	11663	SCREW, MACHINE 8-32 x 1/2	4
28	10461	WASHER, LOCK, INT. TOOTH #8	4
29	10462	NUT 8-32	4
30	10349	SCREW, CAP 3/8-16 x 4-1/2	1
31	10811	WASHER, LOCK 3/8	1
32	10025	WASHER, FLAT 3/8	2
33	72225	SPACER, 5/8 OD x 3/8 ID x 3-11/16" L	1
34	10468	NUT, PUSH 3/8" (RETAINING CLIP)	1
35	72223	SHEAVE 4' OD x 1 Gr.B x 5/8 BORE	1
36	50115	PULLEY, IDLER 3" OD x 1Gr.AB x 3/8 BORE	1
37	10404	NUT 3/8-16	1
38	10811	WASHER, LOCK 3/8	1
39	10282	BELT BX-53 COG	1
40	72214	SPACER, 5/8 x 3/8 x 1-7/8	1
41	10016	KEY 3/16 SQ. x 1-1/2	1
42	10907	SCREW, CAP 3/8-16 x 3/4	1
43	10811	WASHER, LOCK 3/8	1
44	10025	WASHER, FLAT 3/8	2
45	10910	BOLT, CARRIAGE 3/8-16 x 3-1/2	1
46	10040	WASHER, GARRETT 17/32 ID	1
47	72012	SHEAVE 4" OD x 1 Gr.B x 7/8 BORE	1



MANUAL CHOKE KIT

FOR HONDA GXV160 5.5 HP PART #15180



ITEM#	PART#	DESCRIPTION	QTY.
1	10834	SCREW, CAP 1/4-20 X 1/2	1
2	91301	DECAL, CHOKE 5/8 X 5/8	1
3	15182	BRKT., CHOKE CONTROL	1
4	15186	WASHER, BELLEVILLE .500 X.255 X.018	1
5	15181	LEVER, CHOKE CONTROL	1
6	10150	NUT, HEX NYLON LOCK 1/4-20	1
7	15184	CAP, FLAT RED .062 X .75 X 1	1

PARTS FINDER

**Search Website
by Part Number**



**Search Manual
Library For Parts
Manual & Lookup Part
Numbers – Purchase
or Request Quote**

Search Manuals

Enter your information to help us find the right parts manual for your machine.

* Brand:

* Model:

* Serial:

* Part Number:

SEARCH

**Can't Find Part or
Manual? Request Help
by Manufacturer,
Model & Description**

Parts Order Form

Please fill in the following information to help us find the right part for your machine.

Manufacturer:	<input type="text"/>
Model:	<input type="text"/>
Description:	<input type="text"/>
Part Number:	<input type="text"/>
Quantity:	<input type="text"/>
Notes:	<input type="text"/>

REQUEST HELP

Discount-Equipment.com is your online resource for quality parts & equipment.

Florida: **561-964-4949** Outside Florida TOLL FREE: **877-690-3101**

Need parts?

Click on this link: <http://www.discount-equipment.com/category/5443-parts/> and choose one of the options to help get the right parts and equipment you are looking for. Please have the machine model and serial number available in order to help us get you the correct parts. If you don't find the part on the website or on one of the online manuals, please fill out the request form and one of our experienced staff members will get back to you with a quote for the right part that your machine needs.

We sell worldwide for the brands: Genie, Terex, JLG, MultiQuip, Mikasa, Essick, Whiteman, Mayco, Toro Stone, Diamond Products, Generac Magnum, Airman, Haulotte, Barreto, Power Blanket, Nifty Lift, Atlas Copco, Chicago Pneumatic, Allmand, Miller Curber, Skyjack, Lull, Skytrak, Tsurumi, Husquvarna Target, Stow, Wacker, Sakai, Mi-T-M, Sullair, Basic, Dynapac, MBW, Weber, Bartell, Bennar Newman, Haulotte, Ditch Runner, Menegotti, Morrison, Contec, Buddy, Crown, Edco, Wyco, Bomag, Laymor, EZ Trench, Bil-Jax, F.S. Curtis, Gehl Pavers, Heli, Honda, ICS/PowerGrit, IHI, Partner, Imer, Clipper, MMD, Koshin, Rice, CH&E, General Equipment, Amida, Coleman, NAC, Gradall, Square Shooter, Kent, Stanley, Tamco, Toku, Hatz, Kohler, Robin, Wisconsin, Northrock, Oztec, Toker TK, Rol-Air, APT, Wylie, Ingersoll Rand / Doosan, Innovatech, Con X, Ammann, Mecalac, Makinex, Smith Surface Prep, Small Line, Wanco, Yanmar