



REVISED STARTING
SERIAL # 110710019

PARTS LIST MANUAL

MODELS 2EC AND 2GC



ELECTRIC MODEL



GASOLINE MODEL



PROPANE MODEL

DUAL-DISC CONCRETE FLOOR GRINDERS

SKU #	MODEL #	POWER OPTION
50100	2EC-1.5HP	ELECTRIC MOTOR 1.5HP 60Hz 1-PHASE 115/230V
51300-50	2EC-2B/50	ELECTRIC MOTOR 2HP 50Hz 1-PHASE 110/220V
50800	2EC-3B	ELECTRIC MOTOR 3HP 60Hz 1-PHASE 230V
51800	2GC-5.5H	HONDA GASOLINE ENGINE MODEL GXV160
51400	2GC-11H	HONDA GASOLINE ENGINE MODEL GXV340
54800	2GC-11P	HONDA PROPANE ENGINE MODEL GXV340 115V STARTER



A Division of Equipment Development Company, Inc.

Printed in USA

JWA ©2011

PARTS FINDER

**Search Website
by Part Number**



**Search Manual
Library For Parts
Manual & Lookup Part
Numbers – Purchase
or Request Quote**

Search Manuals

Enter your information to help us find the right parts manual for your machine.

* Brand:

* Model:

* Serial:

* Part Number:

SEARCH

**Can't Find Part or
Manual? Request Help
by Manufacturer,
Model & Description**

Parts Order Form

Please fill in the following information to help us find the right part for your machine.

Manufacturer:	<input type="text"/>
Model:	<input type="text"/>
Description:	<input type="text"/>
Part Number:	<input type="text"/>
Quantity:	<input type="text"/>
Notes:	<input type="text"/>

Submit

Discount-Equipment.com is your online resource for quality parts & equipment.

Florida: **561-964-4949** Outside Florida TOLL FREE: **877-690-3101**

Need parts?

Click on this link: <http://www.discount-equipment.com/category/5443-parts/> and choose one of the options to help get the right parts and equipment you are looking for. Please have the machine model and serial number available in order to help us get you the correct parts. If you don't find the part on the website or on one of the online manuals, please fill out the request form and one of our experienced staff members will get back to you with a quote for the right part that your machine needs.

We sell worldwide for the brands: Genie, Terex, JLG, MultiQuip, Mikasa, Essick, Whiteman, Mayco, Toro Stone, Diamond Products, Generac Magnum, Airman, Haulotte, Barreto, Power Blanket, Nifty Lift, Atlas Copco, Chicago Pneumatic, Allmand, Miller Curber, Skyjack, Lull, Skytrak, Tsurumi, Husquvarna Target, Stow, Wacker, Sakai, Mi-T-M, Sullair, Basic, Dynapac, MBW, Weber, Bartell, Bennar Newman, Haulotte, Ditch Runner, Menegotti, Morrison, Contec, Buddy, Crown, Edco, Wyco, Bomag, Laymor, EZ Trench, Bil-Jax, F.S. Curtis, Gehl Pavers, Heli, Honda, ICS/PowerGrit, IHI, Partner, Imer, Clipper, MMD, Koshin, Rice, CH&E, General Equipment, Amida, Coleman, NAC, Gradall, Square Shooter, Kent, Stanley, Tamco, Toku, Hatz, Kohler, Robin, Wisconsin, Northrock, Oztec, Toker TK, Rol-Air, APT, Wylie, Ingersoll Rand / Doosan, Innovatech, Con X, Ammann, Mecalac, Makinex, Smith Surface Prep, Small Line, Wanco, Yanmar

READ AND UNDERSTAND THE OPERATORS INSTRUCTION MANUAL THOROUGHLY BEFORE ATTEMPTING TO OPERATE THIS EQUIPMENT.



Death or serious injury could occur if this machine is used improperly.



SAFETY MESSAGES

- Safety Instructions are preceded by a graphic alert symbol of DANGER, WARNING, or CAUTION.



Indicates an imminent hazard which, if not avoided, will result in death or serious injury.



Indicates an imminent hazard which, if not avoided, can result in death or serious injury.



Indicates hazards which, if not avoided, could result in serious injury and or damage to the equipment.

GASOLINE/PROPANE POWERED EQUIPMENT



- Engine exhaust from this product contains chemicals known to the State of California to cause cancer, birth defects or other reproductive harm.



- Gasoline is extremely flammable and poisonous. It should only be dispensed in well ventilated areas, and with a cool engine.

- Small gasoline engines produce high concentrations of carbon monoxide (CO) example: a 5 HP 4 cycle engine operation in an enclosed 100,000 cu. ft. area with only one change of air per hour is capable of providing deadly concentrations of CO in less than fifteen minutes. Five changes of air in the same area will produce noxious fumes in less than 30 minutes. Gasoline or propane powered equipment should not be used in enclosed or partially enclosed areas. Symptoms of CO poisoning include, headache, nausea, weakness, dizziness, visual problems and loss of consciousness. If symptoms occur - get into fresh air and seek medical attention immediately.

ELECTRICAL POWERED EQUIPMENT



Extreme care must be taken when operating electric models with water present: Ensure power cord is properly grounded, is attached to a Ground-Fault-Interrupter (GFI) outlet, and is undamaged.

- Check all electrical cables - be sure connections are tight and cable is continuous and in good condition. Be sure cable is correctly rated for both the operating current and voltage of this equipment.
- Improper connection of the equipment-grounding conductor can result in a risk of electric shock. Check with qualified electrician or service person if there is any doubt as to whether the outlet is properly grounded. Adhere to all local codes and ordinances.
- **NOTE:** In the event of a malfunction or breakdown, grounding provides a path of least resistance for the electric current to dissipate. The motor is equipped with a grounded plug and must be connected to an outlet that is properly installed and properly grounded. DO NOT modify the plug provided on the motor. If the plug does not fit the outlet have a qualified electrician install the proper receptacle.
- Switch motor OFF **before** disconnecting power.

- Do not disconnect power by pulling cord. To disconnect, grasp the plug, not the cord.
- Unplug power cord at the machine when not in use and before servicing.

GENERAL INSTRUCTIONS


- Equipment should only be operated by trained personnel in good physical condition and mental health (not fatigued). The operator and maintenance personnel must be physically able to handle the bulk weight and power of this equipment.
- This is a one person tool. Maintain a safe operating distance to other personnel. It is the **operators' responsibility** to keep other people (workers, pedestrians, bystanders, etc.) away during operation. Block off the work area in all directions with roping, safety netting, etc. for a safe distance. Failure to do so may result in others being injured by flying debris or exposing them to harmful dust and noise.
- This equipment is intended for commercial use only.
- For the operator's safety and the safety of others, always keep all guards in place during operation.
- Never let equipment run unattended.



- Personal Protection Equipment and proper safety attire must be worn when operating this machinery. The operator must wear approved safety equipment appropriate for the job such as hard hat and safety shoes when conditions require. Hearing protection **MUST** be used (operational noise levels of this equipment may exceed 85db). Eye protection **MUST** be worn at all times.



Keep body parts and loose clothing away from moving parts. Failure to do so could result in dismemberment or death.

- Do not modify the machine.
 - Stop motor/engine when adjusting or servicing this equipment.
-  Maintain a safe operating distance from flammable materials. Sparks from the cutting-action of this machine can ignite flammable materials or vapors.

DUST WARNING



Some dust created by power sanding, sawing, grinding, drilling, and other construction activities contains chemicals known to cause cancer, birth defects, or other reproductive harm. Some examples of these chemicals are:

- Lead from lead-based paints, and
 - Crystalline silica from bricks and concrete and other masonry products.
- Your risk of exposure to these chemicals varies depending on how often you do this type of work. To reduce your risk: work in a well ventilated area, use a dust control system, such as an industrial-style vacuum, and wear approved personal safety equipment, such as a dust/particle respirator designed to filter out microscopic particles.

PARTS LIST MANUAL

MODELS 2EC AND 2GC

DUAL-DISC CONCRETE FLOOR GRINDERS

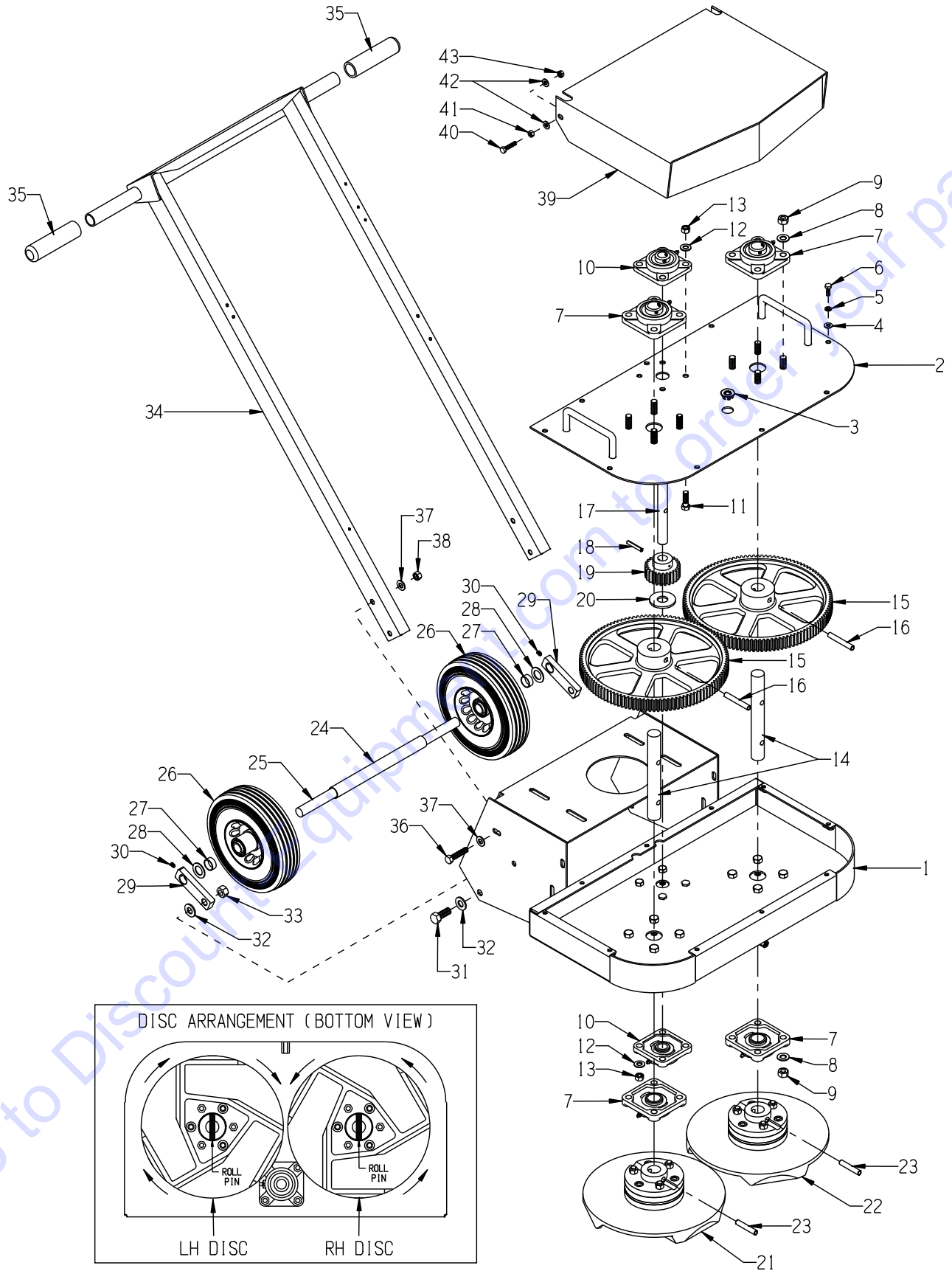
TABLE OF CONTENTS

<u>Section</u>	<u>Page Number</u>
Safety Messages and General Instructions	2
How To Order Replacement Parts	3
Illustration 1: Main Grouping	4, 5
Illustration 2: Skirt, Vacuum Port & Water Hook-Up Grouping	6, 7
Illustration 3: Multi-Accessory Disc Assembly	8
Illustration 4: Tool Box & Multi-Disc Accessories	9
Illustration 5: Dyma-Sert™ & PC Dyma-Sert™ Assemblies	10
Illustration 6: Strip-Sert™ Assembly	11
Illustration 7: Optional Pad Driver Assembly	12
Illustration 8: Optional Surfacers Disc Assembly	13
Illustration 9: Motor & Belt Drive Grouping for 1.5 HP Units	14, 15
Illustration 10: Motor & Belt Drive Grouping for 2HP 50Hz & 3HP 60Hz Units	16, 17
Illustration 11: Engine & Belt Drive Grouping for Honda GXV160	18, 19
Illustration 12: Engine & Belt Drive Grouping for Honda GXV340	20, 21
Illustration 13: Propane Grouping	22, 23
Illustration 14: Optional Weight Blocks & Tray	24
Illustration 15: Switch Wiring Diagram for 1.5HP Units	25
Illustration 16: Starter Wiring Diagram for 2 & 3 HP Units	26
Illustration 17: Motor Wiring Diagram for 1.5 HP Baldor	27
Illustration 18: Motor Wiring Diagram for 1.5 HP Leeson	28
Illustration 19: Motor Wiring Diagram for 2 & 3 HP Baldor	29
Notes	30, 31
Limited Equipment Warranty of Sale - Terms & Conditions	32 (Back Page)



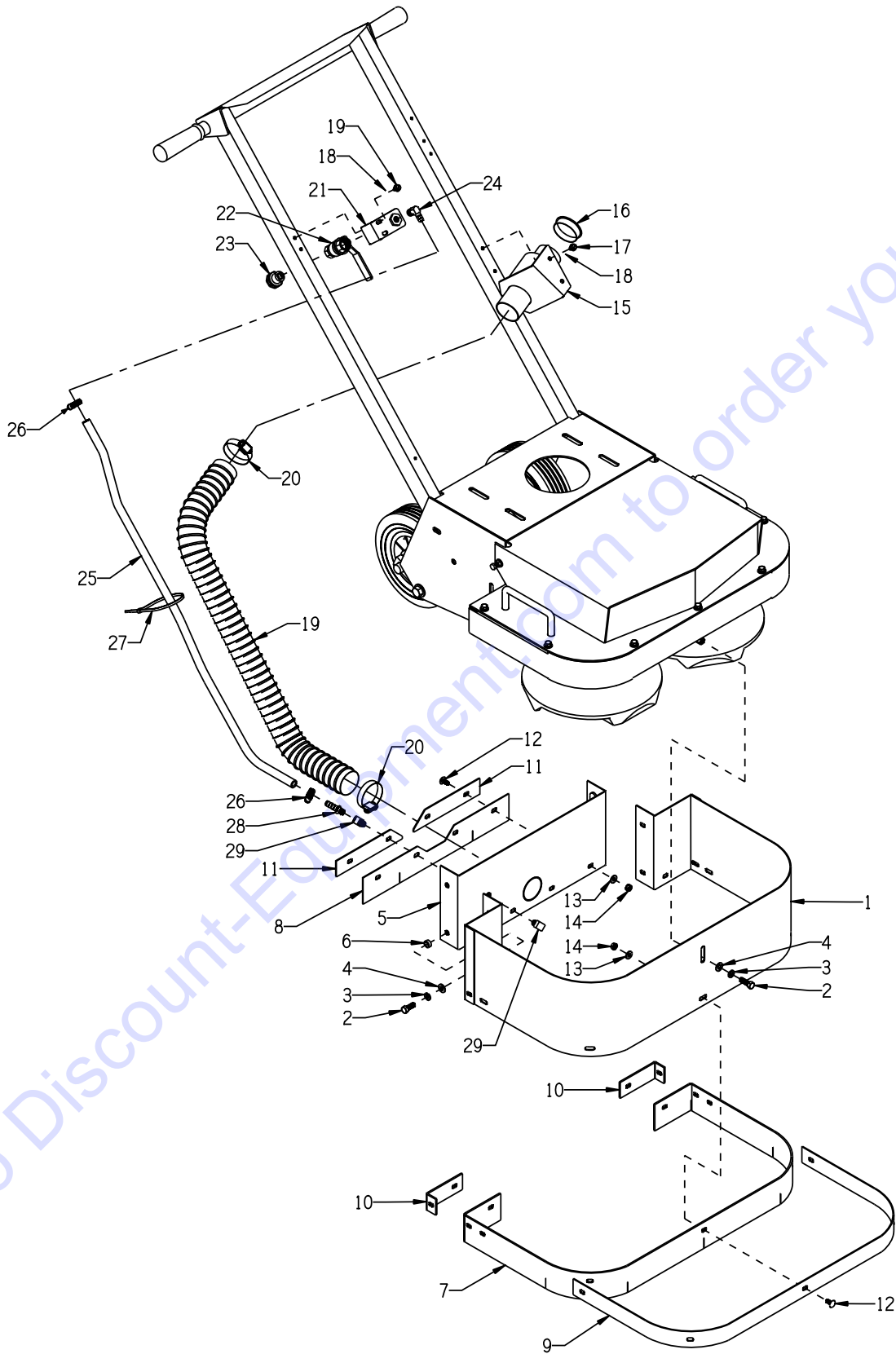
A Division of Equipment Development Company, Inc.

ILLUSTRATION 1 : MAIN GROUPING



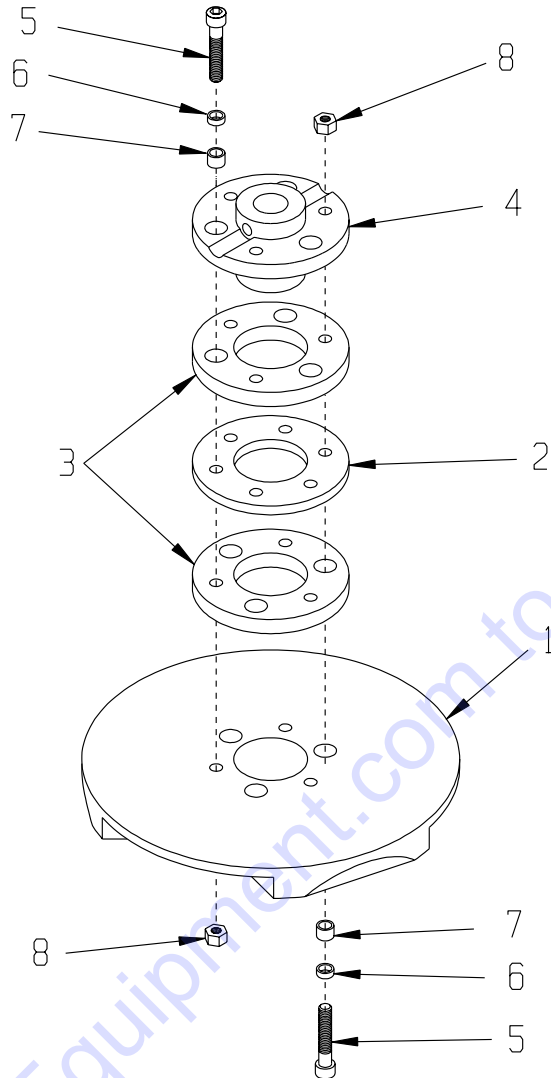
PARTS LISTING - ILLUSTRATION 1: MAIN GROUPING			
ITEM #	PART #	DESCRIPTION	QTY.
1	77022	MAIN FRAME & GEAR CASE, 2-EC/GC	1
2	77007	COVER, GEAR CASE, 2-EC/GC	1
3	10005	PLUG, HOLE 7/8" BRIGHT ZINC	1
4	10602	WASHER, FLAT 1/4 SAE ZINC	10
5	10038	WASHER, LOCK 1/4 ZINC	10
6	10018	SCREW, CAP 1/4-20 X 3/4	10
7	77008	BEARING, BALL 1" 4-HOLE FLANGE, ND	4
8	10450	WASHER, LOCK 7/16 ZINC	16
9	10481	NUT, HEX 7/16-20 ZINC	16
10	77009	BEARING, BALL 3/4" 4-HOLE FLANGE	2
11	10309	SCREW, CAP 3/8-24 X 1-1/4 ZINC	4
12	10811	WASHER, LOCK 3/8 ZINC	8
13	10014	NUT, HEX 3/8-24 ZINC	8
14	77013	SHAFT, LARGE GEAR 1"DIA X 7-13/16"L	2
15	77012	GEAR, SPUR 112 TOOTH (DRIVEN)	2
16	10007	PIN, ROLL 3/8 X 2-1/2	2
17	77011	SHAFT, PINION GEAR 3/4DIA X 7-3/8"L	1
18	10037	PIN, ROLL 1/4 X 1-1/2	1
19	77053	GEAR, SPUR 25 TOOTH (PINION)	1
20	10009	WASHER, FLAT 3/4 SAE ZINC	1
21	9999	DISC ASSY. COMPLETE, MULTI-ACCY. LH (SEE ILLUS. 3)	1
22	8888	DISC ASSY. COMPLETE, MULTI-ACCY. RH (SEE ILLUS. 3)	1
23	10063	PIN, ROLL 3/8 X 2	2
24	77215	AXLE SPACER 9-5/8"L, 2-EC/GC	1
25	77209	AXLE SHAFT 3/4"DIA. X 17"L, 2-EC/GC	1
26	79013SH	WHEEL, STL.HUB 8 X 2-1/2 X 3/4"BRG.	2
27	77214	SPACER, WHEEL 3/8"L, 2-EC/GC	2
28	11597	WASHER .755"ID X 1.25"OD X .060"THK (*USE AS REQ'D.)	2*
29	86305	FLIP-HOLDER, WHEEL AXLE	2
30	10139	SCREW, SET 1/4-20 X 5/16	2
31	10321	SCREW, CAP 1/2-20 X 1-1/4	2
32	10312	WASHER, FLAT 1/2 SAE ZINC	2
33	10205	NUT, HEX LOCK 1/2-20 ZINC	2
34	74010	HANDLE BAR, 2-EC/GC	1
35	10608	GRIP, HAND 1" MODEL AT	2
36	10029	SCREW, CAP 3/8-24 X 1-3/4	4
37	10025	WASHER, FLAT 3/8 SAE ZINC	8
38	10004	NUT, HEX LOCK 3/8-24 ZINC	8
39	77077	HOOD, GRINDER, 2-EC/GC	1
40	10860	BOLT, TAP 1/4-20 X 1-1/4 (FULL THD)	2
41	10013	NUT, HEX 1/4-20 ZINC	2
42	10602	WASHER, FLAT 1/4 SAE ZINC	2
43	10861	NUT, KEPS LOCK 1/4-20 ZINC	2

ILLUSTRATION 2: SKIRT, VACUUM PORT & WATER HOOK-UP GROUPING

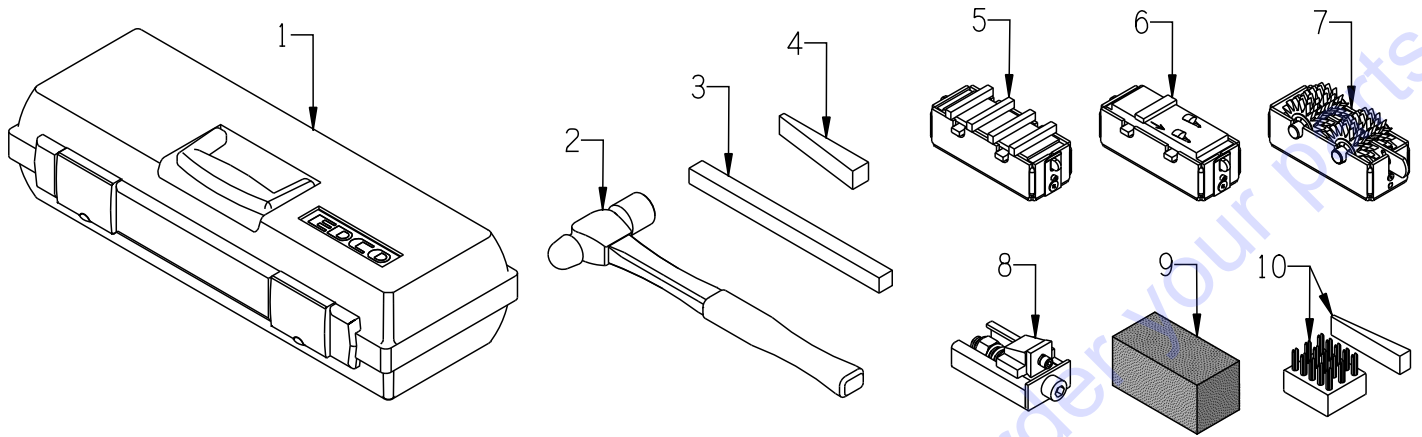


PARTS LISTING - ILLUSTRATION 2: SKIRT, VACUUM PORT & WATER HOOK-UP GROUPING			
ITEM #	PART #	DESCRIPTION	QTY.
1	77001	SKIRT GUARD, 2-EC/GC	1
2	10806	SCREW, CAP 5/16-18 X 1	5
3	10801	WASHER, LOCK 5/16 ZINC	5
4	10213	WASHER, FLAT 5/16 SAE ZINC	5
5	77112	PANEL, VACUUM PORT 2", 2-EC/GC	1
6	10113	SPACER, STEEL 9/16OD X 3/8ID X 7/32	2
7	77141	RUBBER SEAL, SKIRT, 2-EC/GC 2-1/2 x 56	1
8	77142	RUBBER SEAL, SKIRT REAR, 2-EC/GC 2-1/2 x 16	1
9	77143	RETAINING STRIP, RUBBER SEAL, 2-EC/GC	1
10	77339	RETAINING BRKT., SKIRT CORNER	2
11	77144	RETAINING STRIP, REAR SEAL, 2-EC/GC	2
12	11676	BOLT, CARRIAGE 1/4-20 X 5/8 GRADE 2	13
13	10602	WASHER, FLAT 1/4 SAE ZINC	13
14	10861	NUT, KEPS LOCK 1/4-20 ZINC	13
15	86347	BRACKET, MULTI-VAC PORT 2-3"	1
16	65021	CAP/PLUG 2" RED PLASTIC, FLANGED	1
17	10846	SCREW, CAP STSHW 1/4-20 X 1/2	4
18	10038	WASHER, LOCK 1/4 ZINC	4
19	77113	HOSE, FLEX 2"ID X 32"L, GRINDERS	1
20	10766	CLAMP, HOSE, SAE #32, ADJ. TO 2-1/2	2
21	56022	BRACKET, WATER VALVE	1
22	10711	VALVE, BALL 1/2 FPT	1
23	80021	CONN., SWIVEL FEM. 3/4HOSE X 1/2MPT	1
24	10799	BARB ELBOW 90, 3/8HOSE X 1/4MPT	1
25	65081	HOSE, WATER 3/8"ID X 34"L	1
26	50069	CLAMP, HOSE, SAE #6, ADJ. TO 13/16	2
27	10982	TIE, CABLE, BLACK NYLON 11-1/4"	2
28	10694	BARB, 3/8HOSE X 1/8MPT	1
29	10772	ELBOW, STREET 1/8NPT X 45 (BRASS)	2

ILLUSTRATION 3: MULTI-ACCESSORY DISC ASSEMBLY

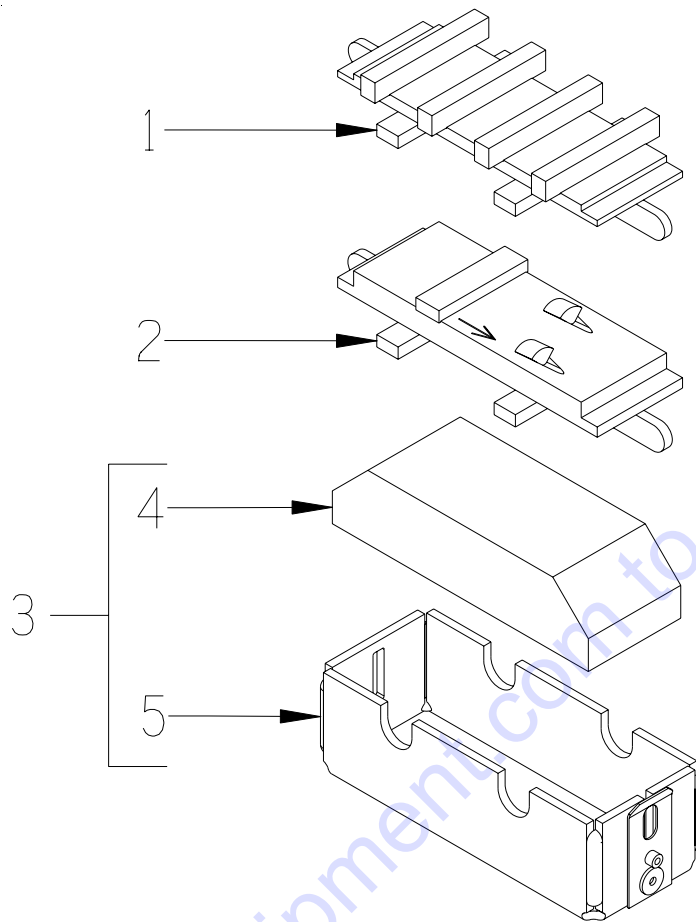


ITEM #	PART #	DESCRIPTION	QTY.*
1-8	8888	DISC ASSEMBLY COMPLETE, RIGHT-HAND (ITEMS 1 THRU 8)	2
	9999	DISC ASSEMBLY COMPLETE, LEFT-HAND (ITEMS 1 THRU 8)	2
1	77088	MULTI-ACCESSORY DISC ONLY R.H. FOR 8888 ASSEMBLY	1
	77099	L.H. FOR 9999 ASSEMBLY	1
2	77020	RING, HUB CARRIER, 6-HOLE	1
3	10112	RING, NEOPRENE, 4-1/2"OD X 1/2"THK	2
4	77010	HUB, ALUMINUM 6-HOLE (GRINDER)	1
5	10114	SCREW, SKT. HD. CAP 3/8-24 X 2-1/4	6
6	10113	SPACER, STEEL 9/16OD X 3/8ID X 7/32"	6
7	10011	SPACER, STEEL 5/8OD X 3/8ID X 3/8"	6
8	10058	NUT, HEX LOCK 3/8-24 W/ NYLON PATCH	6
*QUANTITIES FOR ITEMS 1 THRU 8 ARE PER EACH DISC ASSEMBLY 1 RIGHT-HAND & 1 LEFT HAND DISC REQUIRED PER 2-DISC GRINDER			

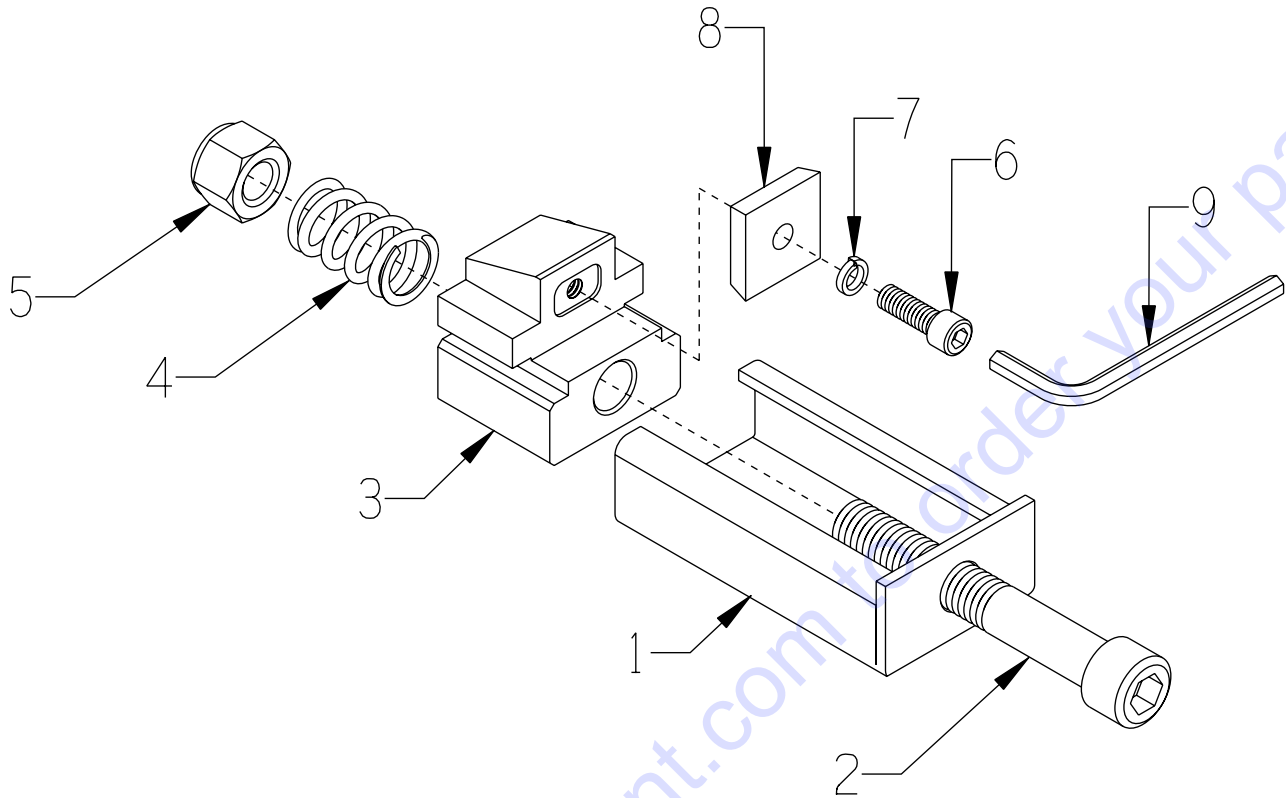
ILLUSTRATION 4: TOOL BOX & MULTI-DISC ACCESSORIES


ITEM #	PART #	DESCRIPTION	QTY.
1-3	12004	TOOL BOX W/ HAMMER & PUNCH, BLACK	1
	12005	TOOL BOX W/ HAMMER & PUNCH, RED	1
1	12001	TOOL BOX, BLACK (DYMA-SERTS™)	1
	12002	TOOL BOX, RED (STRIP-SERTS™)	1
2	12003	HAMMER, BALL PEIN 16 OZ.	1
3	12006	PUNCH, GRINDER WEDGE, 5/8SQ X 9	1
4	12160	WEDGE CG225, HARDWOOD	6
5	-----	DYMA-SERT™ ACCY. W/ HOLDING CASE (SEE ILLUS. 5 FOR MORE DETAILS)	6
6	-----	PCDYMA-SERT™ ACCY. W/ HOLDING CASE (SEE ILLUS. 5 FOR MORE DETAILS)	6
7	12114 12120 12130	SCARIFIER ACCESSORY: CG221 SCARIFIER HOLDING CASE ONLY CG222 TAW SCARIFIER, STANDARD INSERT CG223 TAW SCARIFIER, HEAVY-DUTY INSERT	6
8	12400	STRIP-SERT™ ASSEMBLY (SEE ILLUS. 6 FOR MORE DETAILS)	6
9	11074 11014 11024 11034 11084	CG224V VITRIFIED GRINDING STONES: C10S SUPER COARSE C10 COARSE C24 MEDIUM C80 FINE C120 SUPER FINE	6
10	12170 12180	CG101 WIRE BRUSH W/JR322 WEDGE WEDGE ONLY JR322, HARDWOOD	6 6

ILLUSTRATION 5: DYMA-SERT™ & PCDYMA-SERT™ ASSEMBLIES

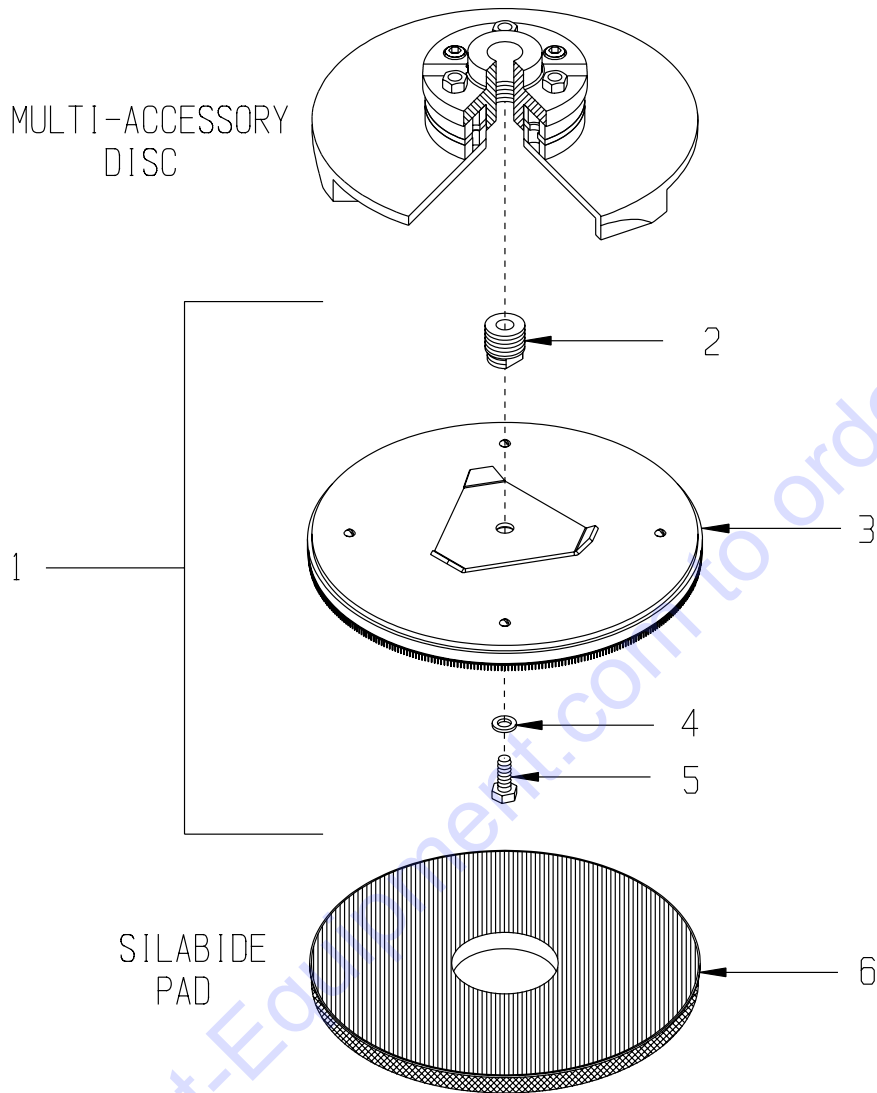


ITEM #	PART #	DESCRIPTION	QTY.*
1	19110 19130 19180 19250 19260 19270 19290	DYMA-SERT™ (SOLD SEPARATELY): EG-1X, 30-40 GRIT (GENERAL PURPOSE) EG-2X, 30-40 GRIT (ABRASIVE CONCRETE) EG-3X, 30-40 GRIT (EPOXY MORTARS) EG-5X, 50 GRIT (TERRAZZO) EG-7X, 80 GRIT (TERRAZZO) EG-9X, 120 GRIT (TERRAZZO) EG-23X, 200-230 GRIT (POLISHING)	6
2	EDP2PCD-30	PCDYMA-SERT™ (SOLD SEPARATELY)	6
3	19120	CG221D DYMA-SERT HOLDING CASE W/PAD	6
4	19140	RUBBER SHOCK PAD	6
5	19121	DYMA-SERT™ HOLDING CASE	6
* QUANTITIES BASED ON 2-DISC GRINDER			

ILLUSTRATION 6: STRIP-SERT™ ASSEMBLY


ITEM #	PART #	DESCRIPTION	QTY.
1-8	12400	STRIP-SERT ASSY. WITH PRO TUNGSERT	6*
1-7	12401	STRIP-SERT ASSY. WITHOUT PRO TUNGSERT	6*
1	12404	TUNGSERT HOLDER BOX, STRIP-SERT	1**
2	12405	SCREW, SKT.HD.CAP 1/2-13 X 3.5,GR.5	1**
3	12403	TUNGSERT BLOCK, STRIP-SERT	1**
4	12406	SPRING, COMP. .765"OD X 1.25"FL	1**
5	10155	NUT, HEX NYLON LOCK 1/2-13	1**
6	11573	SCREW, SKT. HD. CAP 1/4-20 X 3/4	1**
7	11688	WASHER, HI-COLLAR LOCK .26ID X .363	1**
8	12407	PRO TUNGSERT (PACK OF 6) INCLUDES: 6 SCREWS & WASHERS, ITEMS 6 & 7 & 1 HEX WRENCH, ITEM 9.	1**
9	12413	WRENCH, HEX L-KEY 3/16", SHORT-ARM	1
* QUANTITIES BASED ON 2-DISC GRINDER			
** QUANTITIES BASED ON 1 STRIP-SERT ACCESSORY			

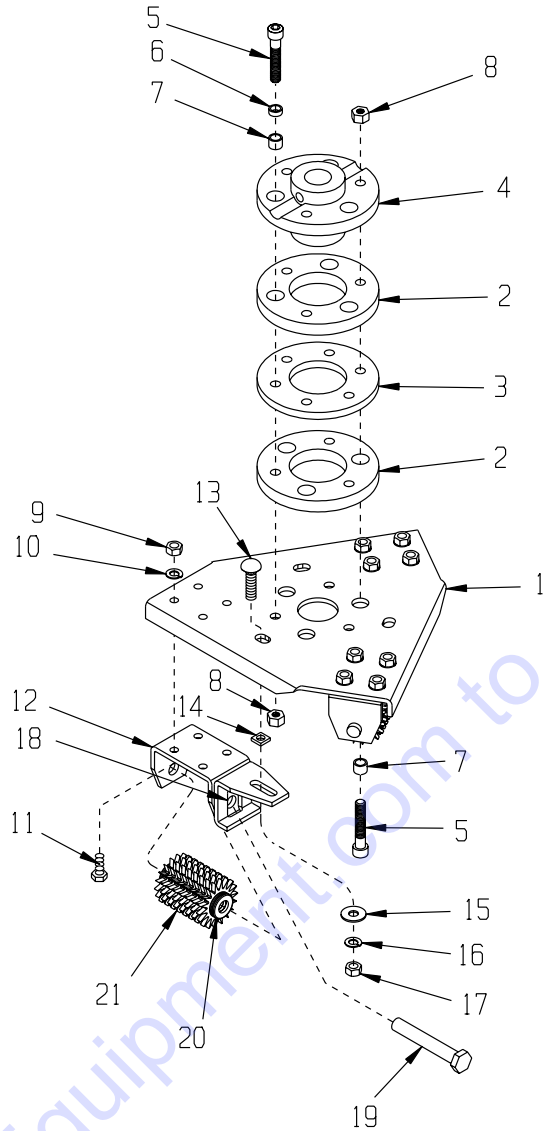
ILLUSTRATION 7: OPTIONAL PAD DRIVER DISC ASSEMBLY



ITEM #	PART #	DESCRIPTION	QTY.*
1	76040	PAD DRIVER DISC ASSEMBLY (INCLUDES ITEMS 2 THRU 5)	2
2	76042	HUB STUD, PAD DRIVER (GRINDER)	1
3	76041	DISC ONLY 11", PAD DRIVER	1
4	10312	WASHER, FLAT 1/2 SAE ZINC	1
5	10304	SCREW, CAP 1/2-20 X 1	1
6	13013	SILABIDE PAD, 11" MEDIUM (NOT INCLUDED W/ ASSEMBLY)	2
*QUANTITIES FOR ITEMS 2 THRU 5 ARE PER EACH DISC ASSEMBLY QUANTITIES FOR ITEMS 1 AND 6 ARE PER 2-DISC GRINDER			

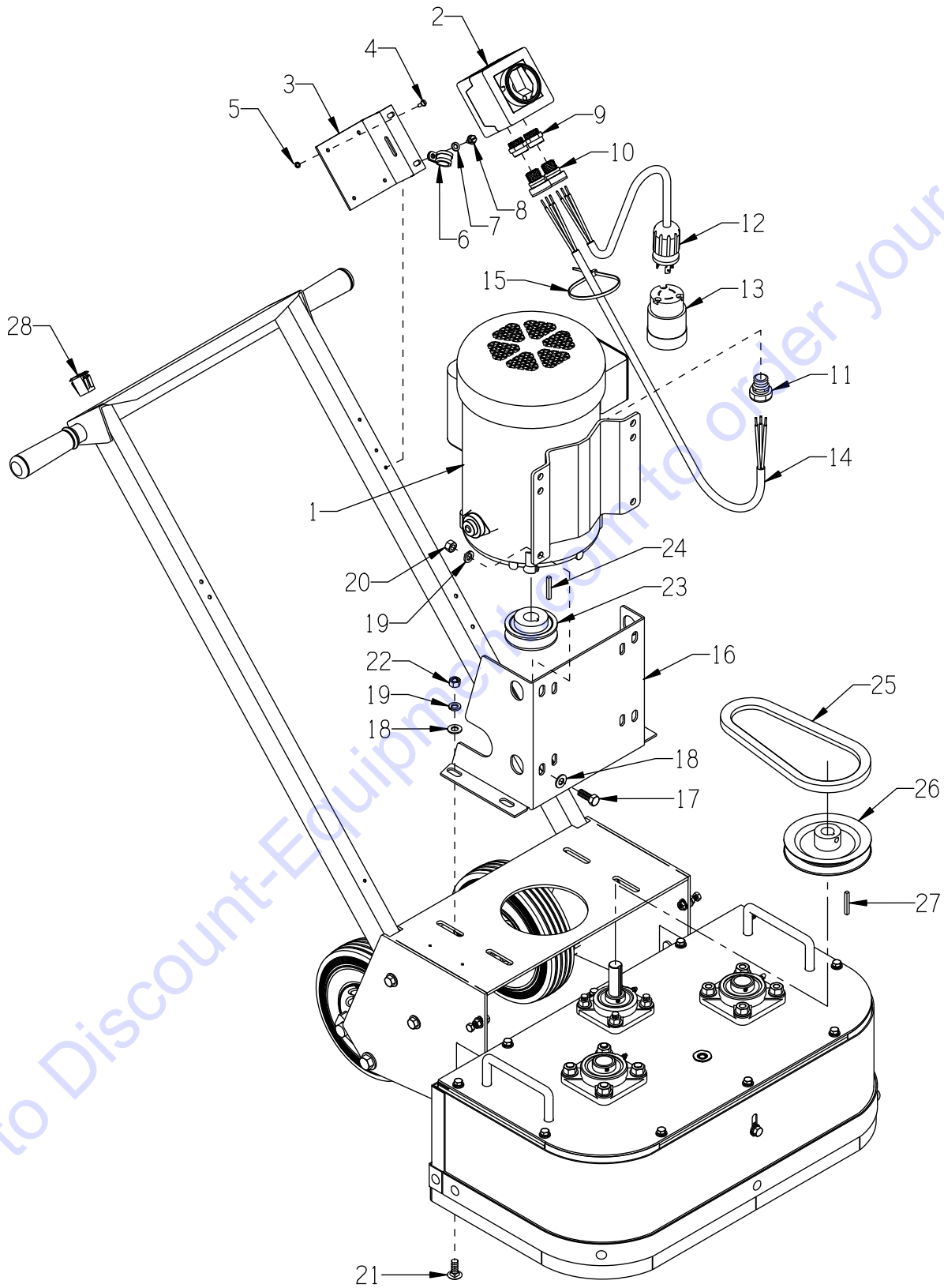
ILLUSTRATION 8: OPTIONAL SURFACER DISC ASSEMBLY

E-2ECGC-PL-0711A



ITEM #	PART #	DESCRIPTION	QTY.*	ITEM #	PART #	DESCRIPTION	QTY.*
1-21	2222 2222C	DISC ASSEMBLY COMPLETE, R.H. W/ STEEL CUTTERS.	1	10	10801	WASHER, LOCK 5/16 ZINC	12
	3333 3333C	DISC ASSEMBLY COMPLETE, L.H. W/ STEEL CUTTERS W/ CARBIDE CUTTERS		1	11	10048	SCREW, CAP 5/16-24 X 3/4
1	77122 77133	DISC ONLY, SURFACER RIGHT HAND DISC LEFT HAND DISC	1 1	12	77074	HOLDER, CUTTER SHAFT	3
2	10112	RING, RUBBER 4-1/2"OD X 1/2"THK	2	13	10802	BOLT, CARRIAGE 3/8-16 X 1	3
3	77020	RING, HUB CARRIER, 6-HOLE	1	14	10089	CLIP, SPEED NUT 3/8	3
4	77010T	HUB, CAST IRON, 6-HOLE	1	15	10025	WASHER, FLAT 3/8 SAE ZINC	3
5	10114	SCREW, SKT. HD. CAP 3/8-24 X 2-1/4	6	16	10811	WASHER, LOCK 3/8 ZINC	3
6	10113	SPACER, STL. 9/16OD X 3/8ID X 7/32	3	17	10404	NUT, HEX 3/8-16 ZINC	3
7	10011	SPACER, STL. 5/8OD X 3/8ID X 3/8	6	18	77075	RETAINER, CUTTER SHAFT	3
8	10058	NUT, HEX LOCK 3/8-24 W/ NYLON PATCH	6	19	77048	CG226 CUTTER SHAFT 1/2 X 3-1/4	3
9	10054	NUT, HEX 5/16-18 ZINC	12	20	12230	CG227 SPACER 1/2"ID	33
				21	12206 20156	CUTTERWHEEL JRS501P 2" POINTED STEEL CP206T 1-3/4" 6-POINT CARBIDE	24 18
*QUANTITIES FOR ITEMS 2 THRU 21 ARE PER EACH DISC ASSEMBLY 1 RIGHT-HAND & 1 LEFT HAND DISC REQD. PER 2-DISC GRINDER							

**ILLUSTRATION 9:
MOTOR & BELT DRIVE GROUPING FOR 1.5 HP UNITS**



PARTS FINDER

**Search Website
by Part Number**



**Search Manual
Library For Parts
Manual & Lookup Part
Numbers – Purchase
or Request Quote**

Search Manuals

Enter your information to search for a manual or parts information for your equipment.

* Brand:

* Model:

* Serial:

* Part Number:

SEARCH

**Can't Find Part or
Manual? Request Help
by Manufacturer,
Model & Description**

Parts Order Form

Please fill in the following information to request help finding a part or manual.

Manufacturer:

Model:

Description:

Quantity:

Part Number:

Part Name:

Part Description:

Part Location:

Part Condition:

Part Status:

Part Material:

Part Color:

Part Weight:

Part Dimensions:

Part Price:

Part Lead Time:

Part Availability:

Part Notes:

Submit

Discount-Equipment.com is your online resource for quality parts & equipment.

Florida: **561-964-4949** Outside Florida TOLL FREE: **877-690-3101**

Need parts?

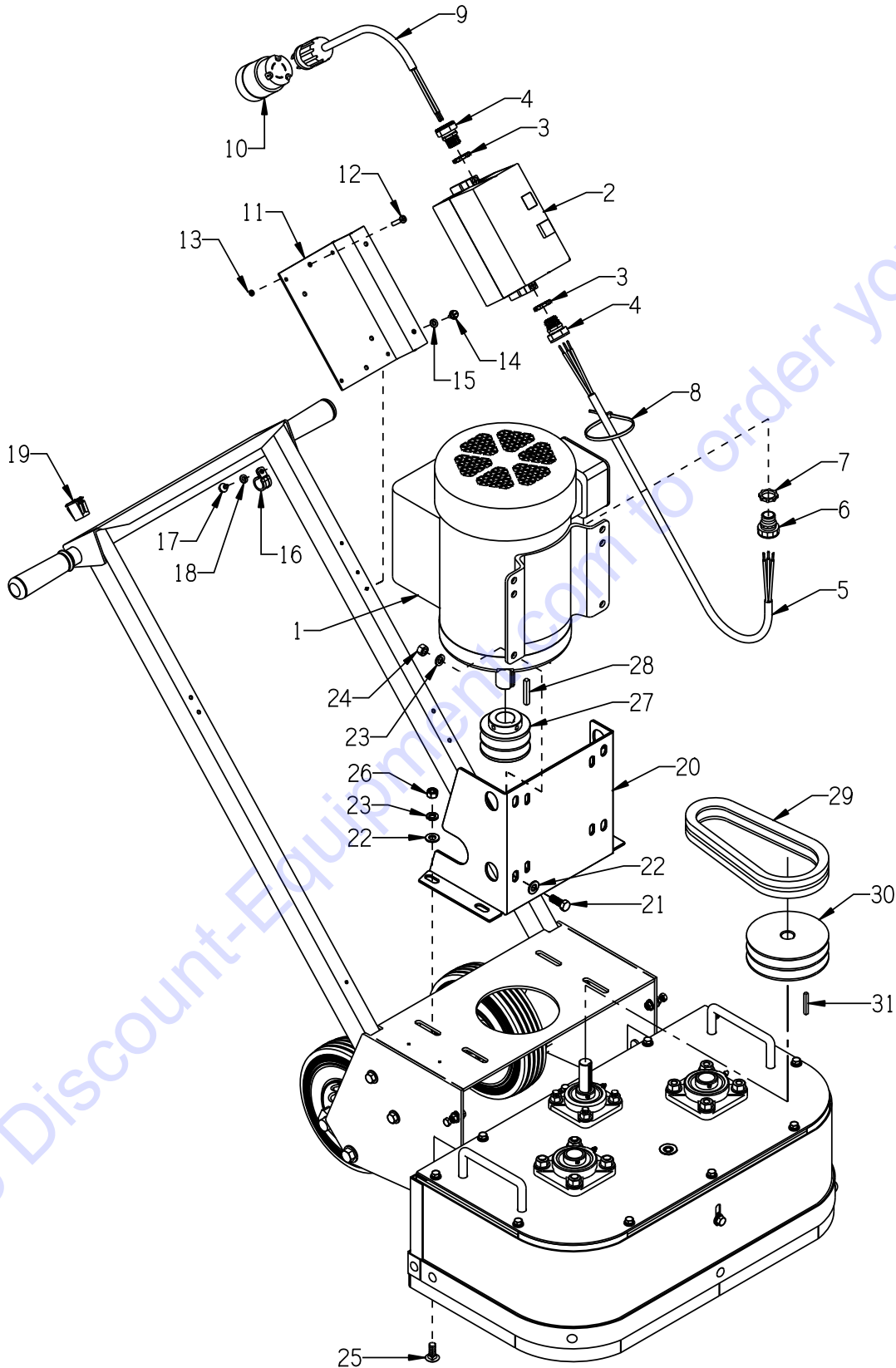
Click on this link: <http://www.discount-equipment.com/category/5443-parts/> and choose one of the options to help get the right parts and equipment you are looking for. Please have the machine model and serial number available in order to help us get you the correct parts. If you don't find the part on the website or on one of the online manuals, please fill out the request form and one of our experienced staff members will get back to you with a quote for the right part that your machine needs.

We sell worldwide for the brands: Genie, Terex, JLG, MultiQuip, Mikasa, Essick, Whiteman, Mayco, Toro Stone, Diamond Products, Generac Magnum, Airman, Haulotte, Barreto, Power Blanket, Nifty Lift, Atlas Copco, Chicago Pneumatic, Allmand, Miller Curber, Skyjack, Lull, Skytrak, Tsurumi, Husquvarna Target, Stow, Wacker, Sakai, Mi-T-M, Sullair, Basic, Dynapac, MBW, Weber, Bartell, Bennar Newman, Haulotte, Ditch Runner, Menegotti, Morrison, Contec, Buddy, Crown, Edco, Wyco, Bomag, Laymor, EZ Trench, Bil-Jax, F.S. Curtis, Gehl Pavers, Heli, Honda, ICS/PowerGrit, IHI, Partner, Imer, Clipper, MMD, Koshin, Rice, CH&E, General Equipment, Amida, Coleman, NAC, Gradall, Square Shooter, Kent, Stanley, Tamco, Toku, Hatz, Kohler, Robin, Wisconsin, Northrock, Oztec, Toker TK, Rol-Air, APT, Wylie, Ingersoll Rand / Doosan, Innovatech, Con X, Ammann, Mecalac, Makinex, Smith Surface Prep, Small Line, Wanco, Yanmar

**PARTS LISTING - ILLUSTRATION 9:
MOTOR & BELT DRIVE GROUPING FOR 1.5 HP UNITS**

ITEM #	PART #	DESCRIPTION	QTY.
1	76027	MOTOR, BALDOR 1.5HP-1P-60HZ-115/230V-1725RPM BALDOR SPEC. 36F57-385 (7/8" SHAFT)	1
	77039	REPLACEMENT PARTS: CAPACITOR, START, BALDOR, 850-950MFD 115V	1
	16101	RESET BUTTON, BALDOR TPCRT31CA	1
	76002	SWITCH, TOGGLE DPDT (SCREW TERM.)	1
	16070	MOTOR, LEESON 1.5HP-1P-60HZ-115/230V-1740RPM LEESON CAT. NO. 132189 (1-1/8" SHAFT)	1
	16524	REPLACEMENT PARTS: CAPACITOR, START, LEESON, 1190MFD 125V	1
	16161	RESET BUTTON, LEESON BRJ44DB	1
	16534	SWITCH, TOGGLE DPDT (PUSH-ON TERM.)	1
2	77043	SWITCH, ROTARY CAM ON/OFF, LOVATO	1
3	77042	BRACKET, LOVATO ROTARY CAM SWITCH	1
4	11663	SCREW, MACHINE 8-32 X 1/2 (LOCATED INSIDE OF SWITCH BOX)	4
5	10462	NUT, KEPS LOCK 8-32 ZINC	4
6	11690	CLAMP, LOOM, 3/8"	1
7	10038	WASHER, LOCK 1/4 ZINC	2
8	10846	SCREW, CAP STSHW 1/4-20 X 1/2	2
9	77043-1	SWITCH ADAPTER, PG16 TO 1/2"NPT	2
10	40066	STRAIN RELIEF 1/2NPT X .350-.450"	2
11	16176	STRAIN RELIEF 3/4NPT X .350-.450"	1
12	77044	PLUG W/ 12/3 WIRE HARNESS, LOCKING	1
13	40041	CONNECTOR, LOCKING 20A/125V L5-20C	1
14	77045	WIRE HARNESS 12/3 X 42"LOA	1
15	10982	TIE, CABLE, BLACK NYLON 11-1/4"	2
16	77037	MOUNT, MOTOR	1
17	10021	SCREW, CAP 3/8-24 X 1	4
18	10025	WASHER, FLAT 3/8 SAE ZINC	8
19	10811	WASHER, LOCK 3/8 ZINC	4
20	10014	NUT, HEX 3/8-24 ZINC	4
21	10802	BOLT, CARRIAGE 3/8-16 X 1 FULL THD.	4
22	10404	NUT, HEX 3/8-16 ZINC	4
23	77017	SHEAVE 3"OD X 1GR.B X 7/8"BORE (BALDOR 1.5HP)	1
	77030	SHEAVE 3"OD X 1GR.B X 1-1/8"BORE (LEESON 1.5HP)	1
24	----	KEY (INCLUDED W/ MOTOR)	1
25	10051	BELT 5L-270 (21/32" X 27")	1
26	3654	SHEAVE 5"OD X 1GR.B X 3/4"BORE	1
27	10016	KEY 3/16SQ X 1-1/2	1
28	15204	PLUG, RECT. HOLE, PLASTIC SNAP-IN	1

**ILLUSTRATION 10:
MOTOR & BELT DRIVE GROUPING FOR 2HP 50Hz & 3HP 60Hz UNITS**

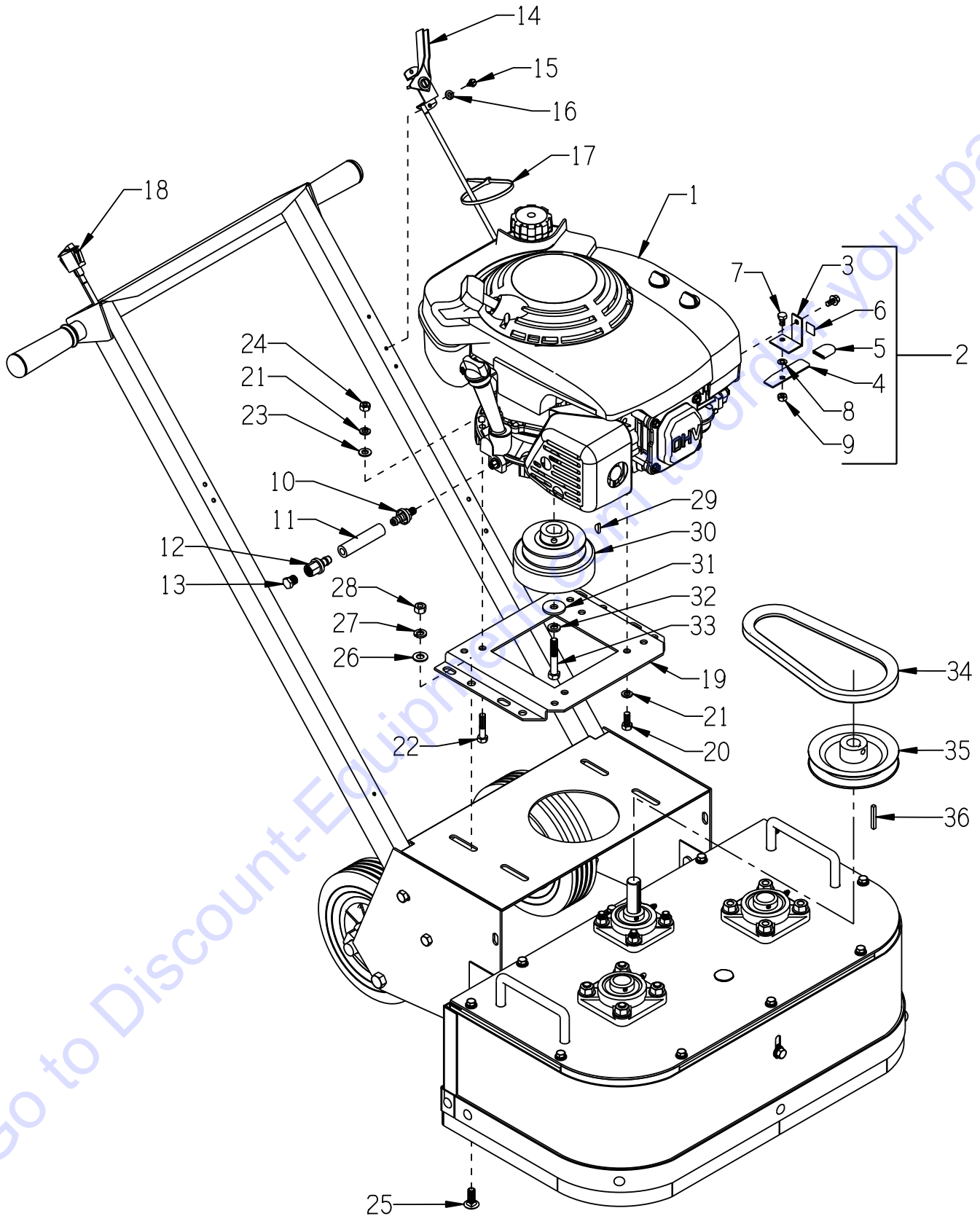


PARTS LISTING - ILLUSTRATION 10: MOTOR & BELT DRIVE GROUPING FOR 2HP 50Hz & 3HP 60Hz UNITS			
ITEM #	PART #	DESCRIPTION	QTY.
1	16019	MOTOR, BALDOR 2HP-1PH-50HZ-110/220V-20/10A BALDOR CAT. #L3605T-50 REPLACEMENT PARTS:	1
	40051	CAPACITOR, START, 645-774MFD 125V	1
	16164	CAPACITOR, RUN, 40MFD 370V	1
	16003	MOTOR, BALDOR 3HP-1PH 60HZ-230V-14A BALDOR CAT. #L3609T REPLACEMENT PARTS:	1
	40051	CAPACITOR, START, 645-774MFD 125V	1
	16535 16536	CAPACITOR, START, 460-552MFD 125V CAPACITOR, RUN, 60MFD 370V	1 1
2	16470	STARTER ACI #128839, 110V 50Hz 17.5-21.5A OL	1
	16460	STARTER ACI #128840, 220V 50Hz 9.0-12.5A OL	1
	16405	STARTER ACI #128841, 230V 60Hz 11.3-16.0A OL	1
3	10790	CONDUIT LOCK NUT 1/2 NP	2
4	41130	STRAIN RELIEF 1/2NPT X .550-.650"	2
5	77045	WIRE HARNESS 12/3 X 42"LOA	1
6	16176	STRAIN RELIEF 3/4NPT X .350-.450"	1
7	10740	CONDUIT LOCK NUT 3/4 NP	1
8	10982	TIE, CABLE, BLACK NYLON 11-1/4"	2
9	77044	PLUG W/ 12/3 WIRE HARNESS, LOCKING	1
10	40000	CONNECTOR, LOCKING 20A/250V L6-20C	1
11	86027	MOUNTING BRKT., STARTER	1
12	11732	SCREW, MACHINE 10-32 X 1-3/4 RPH	2
	10384	SCREW, MACHINE 10-32 X 1 RHP	1
13	10832	NUT, KEPS LOCK 10-32 ZINC	3
14	10846	SCREW, CAP STSHW 1/4-20 X 1/2	2
15	10038	WASHER, LOCK 1/4 ZINC	2
16	11690	CLAMP, LOOM, 3/8"	1
17	10831	WASHER, LOCK, INT. TOOTH #10	1
18	10877	SCREW, CAP STSHW 10-24 X 1/2	1
19	15204	PLUG, RECT. HOLE, PLASTIC SNAP-IN	1
20	77037	MOUNT, MOTOR	1
21	10021	SCREW, CAP 3/8-24 X 1	4
22	10025	WASHER, FLAT 3/8 SAE ZINC	8
23	10811	WASHER, LOCK 3/8 ZINC	4
24	10014	NUT, HEX 3/8-24 ZINC	4
25	10802	BOLT, CARRIAGE 3/8-16 X 1 FULL THD.	4
26	10404	NUT, HEX 3/8-16 ZINC	4
27	77030	SHEAVE 3"OD X 1GR.B X 1-1/8"BORE (2HP 50Hz)	1
	79023	SHEAVE 3"OD X 2GR.B X 1-1/8"BORE (3HP 60Hz)	1
28	-----	KEY (INCLUDED W/ MOTOR)	1
29	10051	BELT 5L-270 (21/32" X 27")	1 OR 2
30	3654	SHEAVE 5"OD X 1GR.B X 3/4"BORE (2HP 50Hz)	1
	77058	SHEAVE 5"OD X 2GR.B X 3/4"BORE (3HP 60Hz)	1
31	10016	KEY 3/16SQ X 1-1/2	1



A Division of Equipment Development Company, Inc.

**ILLUSTRATION 11:
ENGINE & BELT DRIVE GROUPING FOR HONDA GX160**

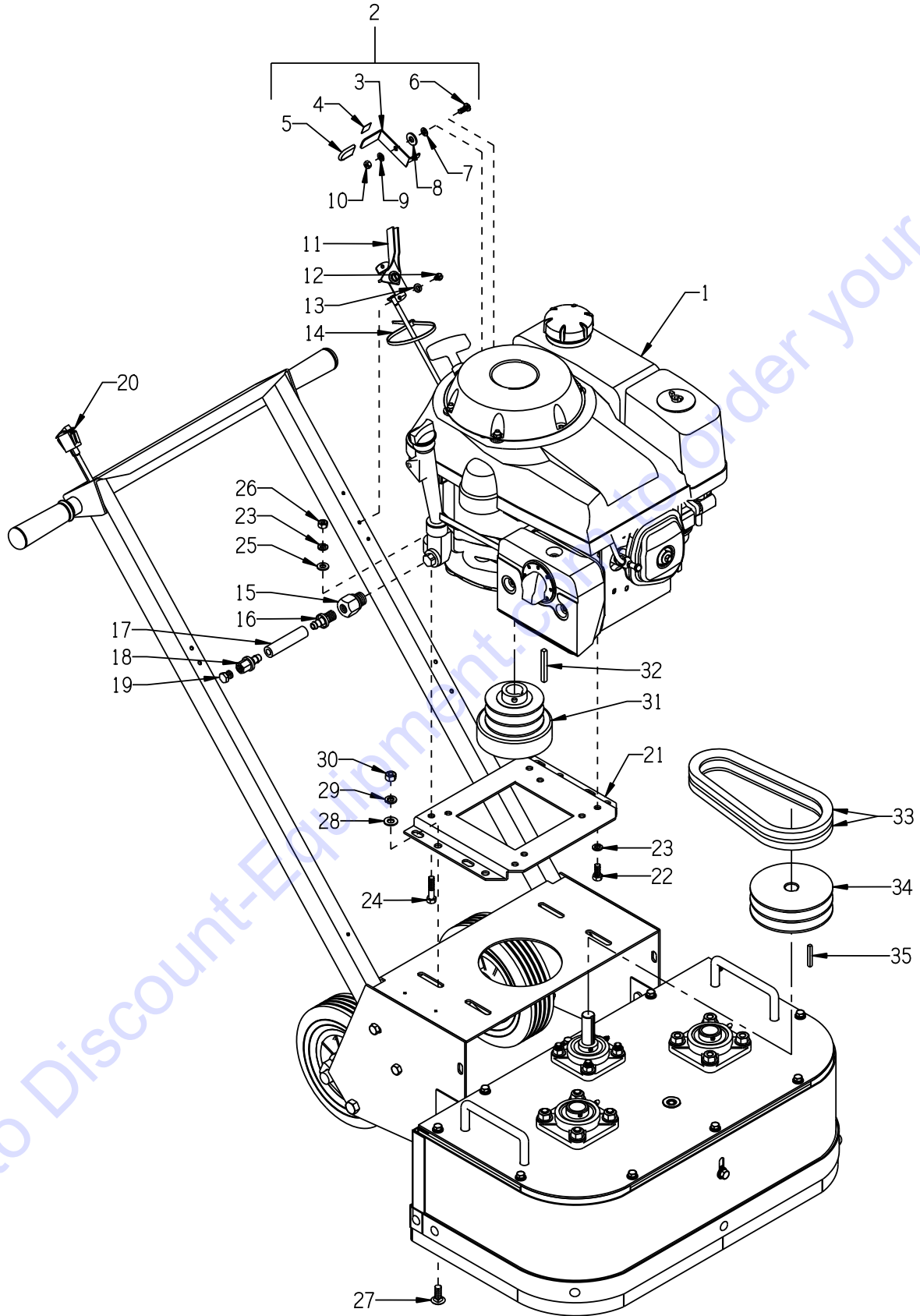


PARTS LISTING - ILLUSTRATION 11: ENGINE & BELT DRIVE GROUPING FOR HONDA GX160			
ITEM #	PART #	DESCRIPTION	QTY.
1	76020	ENGINE, HONDA GXV160UH2-N12 WITH STANDARD DUAL ELEMENT AIR CLEANER	1
2	15180	MANUAL CHOKE KIT FOR HONDA GXV160 (INCLUDES ITEMS 3 THRU 9)	1
3	15182	BRKT., CHOKE CONTROL, GXV160	1
4	15181	LEVER, CHOKE CONTROL, GXV160	1
5	15184	CAP, FLAT RED .062 X .75 X 1	1
6	91301	DECAL, CHOKE 5/8 X 5/8	1
7	10834	SCREW, CAP 1/4-20 X 1/2	1
8	15186	WASHER, BELLEVILLE .500 X.255 X.018	1
9	10150	NUT, HEX NYLON LOCK 1/4-20	1
10	11541	BARB, PUSH-ON 3/8 HOSE X10MM X 1.25	1
11	72106	HOSE, PUSH-ON 3/8"ID X 2-1/4"L	1
12	11544	BARB, PUSH-ON 3/8 HOSE X 1/4FPT	1
13	10776	PIPE PLUG 1/4 NPT (BRASS)	1
14	40388	CABLE, THROTTLE, LEVER-TYPE 24"	1
15	10877	SCREW, CAP STSHW 10-24 X 1/2	2
16	10831	WASHER, LOCK, INT. TOOTH #10	2
17	10982	TIE, CABLE, BLACK NYLON 11-1/4"	1
18	15201A	SWITCH W/ WIRES, ROCKER RED ON-OFF ADDITIONAL PARTS REQ'D. (NOT SHOWN);	1
	50084	TERM., RING #10 16-14GA. INSULATED	1
	10831	WASHER, LOCK, INT. TOOTH #10	1
	10877	SCREW, CAP STSHW 10-24 X 1/2	1
	10970	CONN., WIRE QUICK-SPLICE 18-14 GA.	1
	36042	CLIP, NATURAL CORD, 1/8" X 1/4"	2
19	76023	MOUNT, ENGINE, VERT. SHAFT	1
20	10048	SCREW, CAP 5/16-24 X 3/4	2
21	10801	WASHER, LOCK 5/16 ZINC	4
22	10342	SCREW, CAP 5/16-18 X 1-1/2	2
23	10213	WASHER, FLAT 5/16 SAE ZINC	2
24	10054	NUT, HEX 5/16-18 ZINC	2
25	10802	BOLT, CARRIAGE 3/8-16 X 1 FULL THD.	4
26	10025	WASHER, FLAT 3/8 SAE ZINC	4
27	10811	WASHER, LOCK 3/8 ZINC	4
28	10404	NUT, HEX 3/8-16 ZINC	4
29	10019	KEY, WOODRUFF 5/32 X 5/8 (#505)	1
30	77024	CLUTCH, CENTRIFUGAL 3.5 X 1GR X 7/8	1
31	72006	WASHER, 1-1/4OD X 13/32ID X 1/8THK	1
32	10811	WASHER, LOCK 3/8 ZINC	1
33	10336	SCREW, CAP 3/8-24 X 2-1/4	1
34	10051	BELT 5L-270 (21/32" X 27")	1
35	3654	SHEAVE 5"OD X 1GR.B X 3/4"BORE	1
36	10016	KEY 3/16SQ X 1-1/2	1



A Division of Equipment Development Company, Inc.

**ILLUSTRATION 12:
ENGINE & BELT DRIVE GROUPING FOR HONDA GX340**



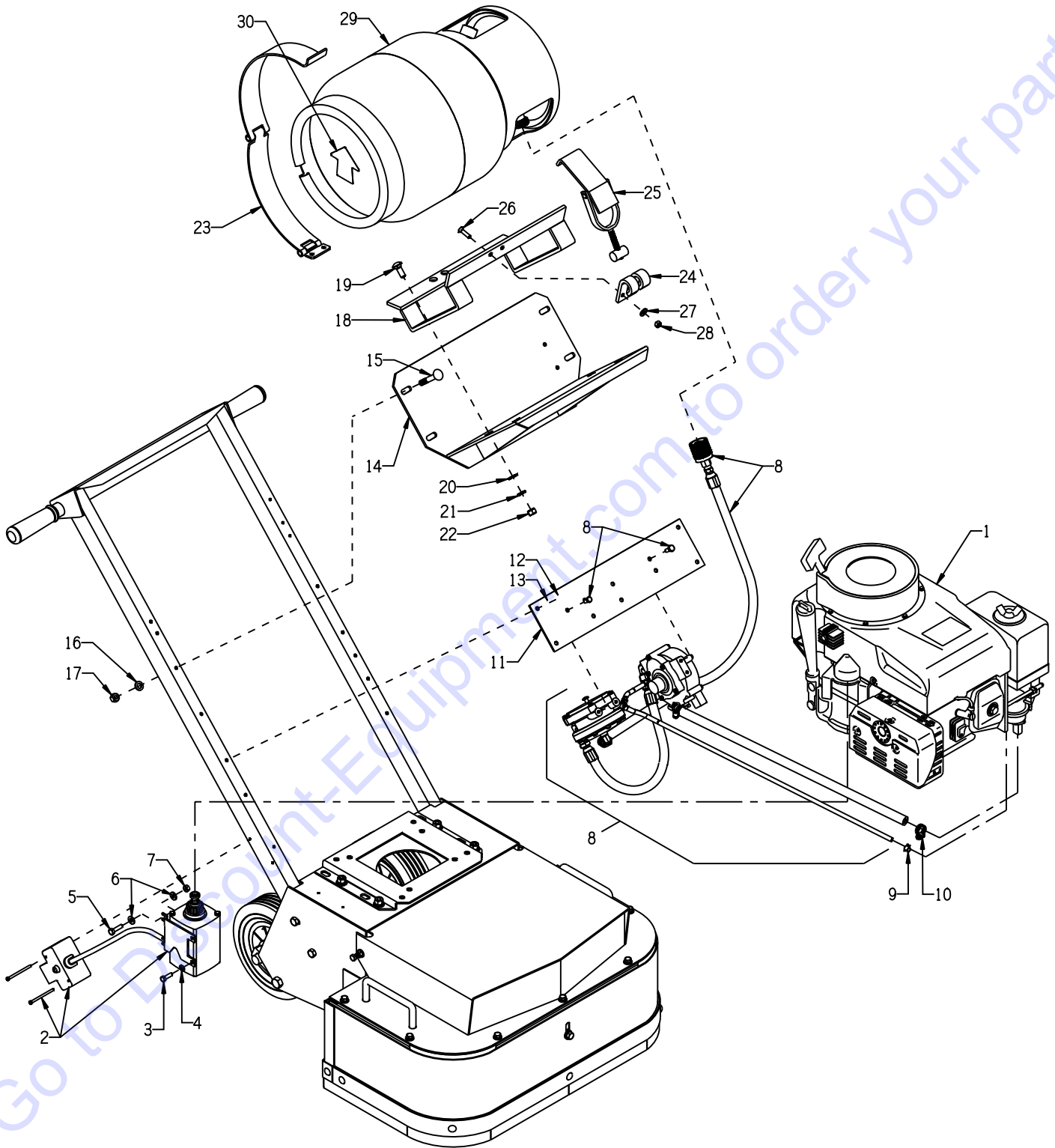
**PARTS LISTING - ILLUSTRATION 12:
ENGINE & BELT DRIVE GROUPING FOR HONDA GX340**

ITEM #	PART #	DESCRIPTION	QTY.
1	76004 15012	ENGINE HONDA GASOLINE MODEL GXV340UT2-DX3 (SHOWN) HONDA PROPANE MODEL GXV340UT2-DP23 (ILLUS. 13)	1
2	15190	MANUAL CHOKE KIT - GASOLINE ENGINE ONLY (INCLUDES ITEMS 3 THRU 10)	1
3	15183	LEVER, CHOKE CONTROL, GXV340	1
4	91301	DECAL, CHOKE 5/8 X 5/8	1
5	15184	CAP, FLAT RED .062 X .75 X 1	1
6	15185	SCREW, MACHINE M6 X 16MM PHILLIP HD	1
7	15188	WASHER .265"ID, .50"OD, .029-.035"THK	1
8	15187	WASHER, FIBER .75 X .25 X .093	1
9	15186	WASHER, BELLEVILLE .500 X.255 X.018	1
10	28026	NUT, HEX NYLON LOCK M6 X 1MM	1
11	40388	CABLE, THROTTLE, LEVER-TYPE 24"	1
12	10877	SCREW, CAP STSHW 10-24 X 1/2	2
13	10831	WASHER, LOCK, INT. TOOTH #10	2
14	10982	TIE, CABLE, BLACK NYLON 11-1/4"	1
15	11689	ADAPTER, 20MM X 1.5 TO 1/4FPT	1
16	10657	BARB, PUSH-ON 3/8 HOSE X 1/4MPT	1
17	72106	HOSE, PUSH-ON 3/8"ID X 2-1/4"L	1
18	11544	BARB, PUSH-ON 3/8 HOSE X 1/4FPT	1
19	10776	PIPE PLUG 1/4 NPT (BRASS)	1
20	15201A 50084 10831 10877 10970 36042	SWITCH W/ WIRES, ROCKER RED ON-OFF ADDITIONAL PARTS REQ'D. (NOT SHOWN); TERM., RING #10 16-14GA. INSULATED WASHER, LOCK, INT. TOOTH #10 SCREW, CAP STSHW 10-24 X 1/2 CONN., WIRE QUICK-SPLICE 18-14 GA. CLIP, NATURAL CORD, 1/8" X 1/4"	1 1 1 1 1 2
21	76023	MOUNT, ENGINE, VERT. SHAFT	1
22	10048	SCREW, CAP 5/16-24 X 3/4	2
23	10801	WASHER, LOCK 5/16 ZINC	4
24	10606	SCREW, CAP 5/16-18 X 1-1/4	2
25	10213	WASHER, FLAT 5/16 SAE ZINC	4
26	10054	NUT, HEX 5/16-18 ZINC	4
27	10802	BOLT, CARRIAGE 3/8-16 X 1 FULL THD.	4
28	10025	WASHER, FLAT 3/8 SAE ZINC	4
29	10811	WASHER, LOCK 3/8 ZINC	4
30	10404	NUT, HEX 3/8-16 ZINC	4
31	76024	CLUTCH, CENTRIFUGAL 3.5 X 2GR X 1	1
32	10307	KEY 1/4SQ X 2-1/4	1
33	10051	BELT 5L-270 (21/32" X 27")	2
34	77058	SHEAVE 5"OD X 2GR.B X 3/4"BORE	1
35	10016	KEY 3/16SQ X 1-1/2	1



A Division of Equipment Development Company, Inc.

ILLUSTRATION 13: PROPANE GROUPING



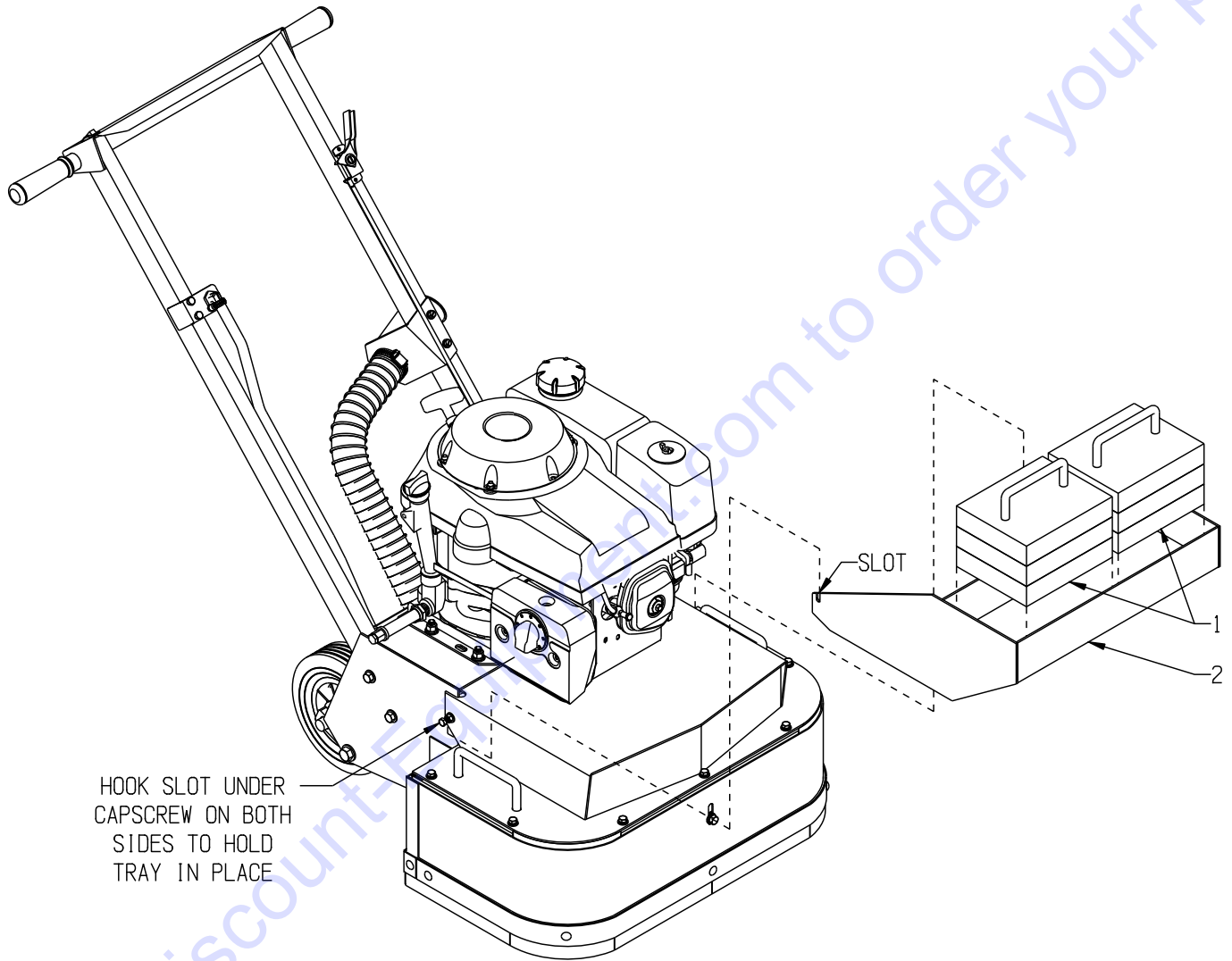
PARTS LISTING - ILLUSTRATION 13 : PROPANE GROUPING

ITEM #	PART #	DESCRIPTION	QTY.
1	15012	ENGINE, HONDA PROPANE MODEL GXV340T2-DP23 (SEE ILLUS. 12)	1
2	15126	STARTER KIT, ELECTRIC 120 VOLT AC (INCLUDES POWER CORD - NOT SHOWN)	1
3	11634	SCREW, CAP M6 X 1.0P X 20MM	2
4	10038	WASHER, LOCK 1/4 ZINC	2
5	10031	SCREW, CAP 1/4-20 X 1	2
6	10602	WASHER, FLAT 1/4 SAE (USE 2 FOR SHIMS WHEN REQ'D.)	4
7	10013	NUT, HEX 1/4-20 ZINC	2
8	15102	VAPOR KIT FOR HONDA GXV340T2-DP23 KIT INCLUDES: HIGH PRESSURE VAPOR REGULATOR G-SE-50 2A-C (1 EA.) FUELOCK VAPOR FILTER G-SE-VFF30-2-4 (1 EA.) HIGH PRESSURE HOSE W/ FITTINGS 11-1/2" (1 EA.) HIGH PRESSURE HOSE W/ FITTINGS 38-1/2" (1 EA.) HOSE, PUSH LOCK 3/8"ID X 32"L (1 EA.) HOSE, VACUUM 3/16"ID X 48"L (1 EA.) REGO 7141F FEMALE COUPLING, BRASS (1 EA.) FITTING 1/4NPT X 3/8FLARE 90DEG, BRASS (3 EA.) FITTING 3/8" PIPE X 3/8" HOSE BARB ELBOW, BRASS . . . (1 EA.) FITTING 1/8NPT X 3/16" HOSE, ELBOW, BRASS (1 EA.) FITTING 1/8NPT X 3/16" HOSE BARB, BRASS (1 EA.) FITTING 3/16" TEE, NYLON (1 EA.) MOUNTING SCREWS (4 EA.)	1
9	11720	CLAMP, HOSE SPRING-TYPE 1/8" BLACK 02-041	6
10	50069	CLAMP, HOSE, SAE #6, ADJ. TO 13/16	2
11	77063	PROPANE REGULATOR MOUNT PLATE	1
12	10846	SCREW, CAP STSHW 1/4-20 X 1/2	4
13	10038	WASHER, LOCK 1/4 ZINC	4
14	77062	PROPANE TANK MOUNT	1
15	10908	BOLT, CARRIAGE 3/8-16 X 2-1/2	4
16	10811	WASHER, LOCK 3/8 ZINC	4
17	10404	NUT, HEX 3/8-16 ZINC	4
18	77061-1	PROPANE TANK CRADLE BRACKET ONLY	1
19	10802	BOLT, CARRIAGE 3/8-16 X 1 FULL THD.	4
20	10025	WASHER, FLAT 3/8 SAE ZINC	4
21	10811	WASHER, LOCK 3/8 ZINC	4
22	10404	NUT, HEX 3/8-16 ZINC	4
23	77061-2	PROPANE TANK STRAP W/ HINGE	1
24	77061-3	PROPANE TANK CLAW BRACKET	1
25	77061-4	PROPANE TANK TOGGLE CLAMP	1
26	11661	SCREW, FLAT HD SLT 1/4-20 X 1	2
27	10602	WASHER, FLAT 1/4 SAE	2
28	10861	NUT, KEPS LOCK 1/4-20 ZINC	2
29	15130	PROPANE TANK 20LB. HORZ./VERT.	1
30	91122	DECAL, ARROW, RED, 3 X 3	1



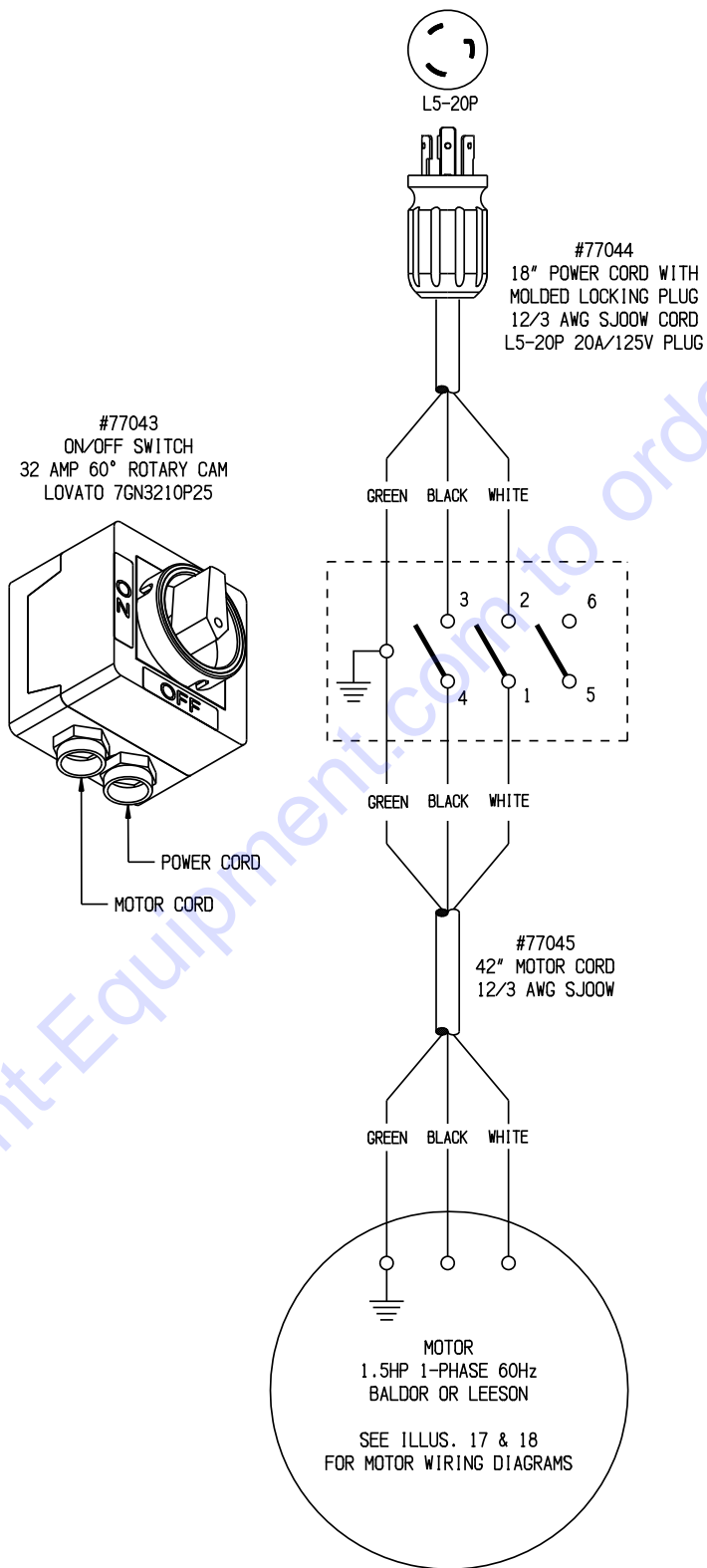
A Division of Equipment Development Company, Inc.

**ILLUSTRATION 14:
OPTIONAL WEIGHT BLOCKS & TRAY**



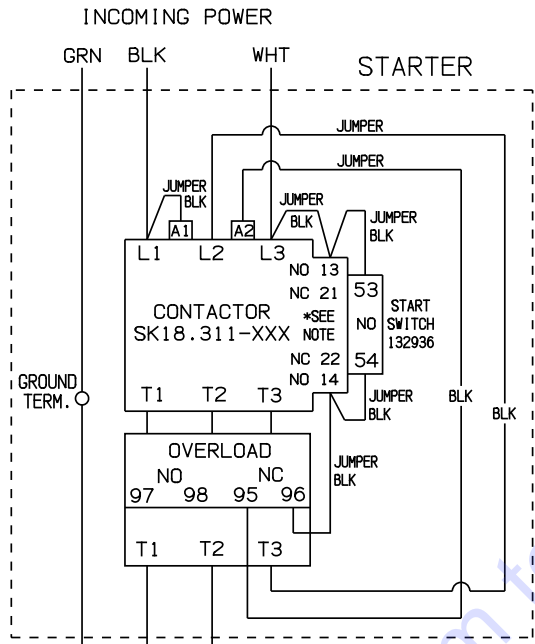
ITEM #	PART #	DESCRIPTION	QTY.
1	77049	WT-55 WEIGHT 55 LBS.(25 KG)	1 OR 2
2	77050	WT-1 WEIGHT HOLDING TRAY	1

**ILLUSTRATION 15:
SWITCH WIRING DIAGRAM FOR 1.5HP UNITS**



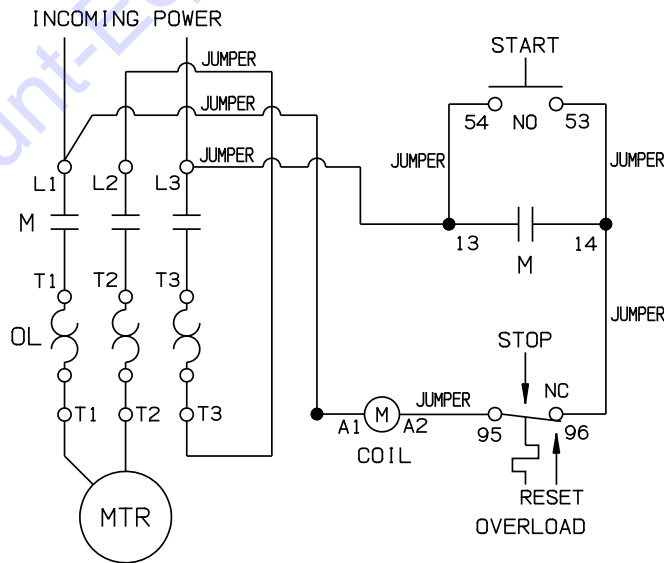
Go to Discount-Equipment.com to order your parts

**ILLUSTRATION 16:
STARTER WIRING DIAGRAM FOR 2 & 3HP UNITS**



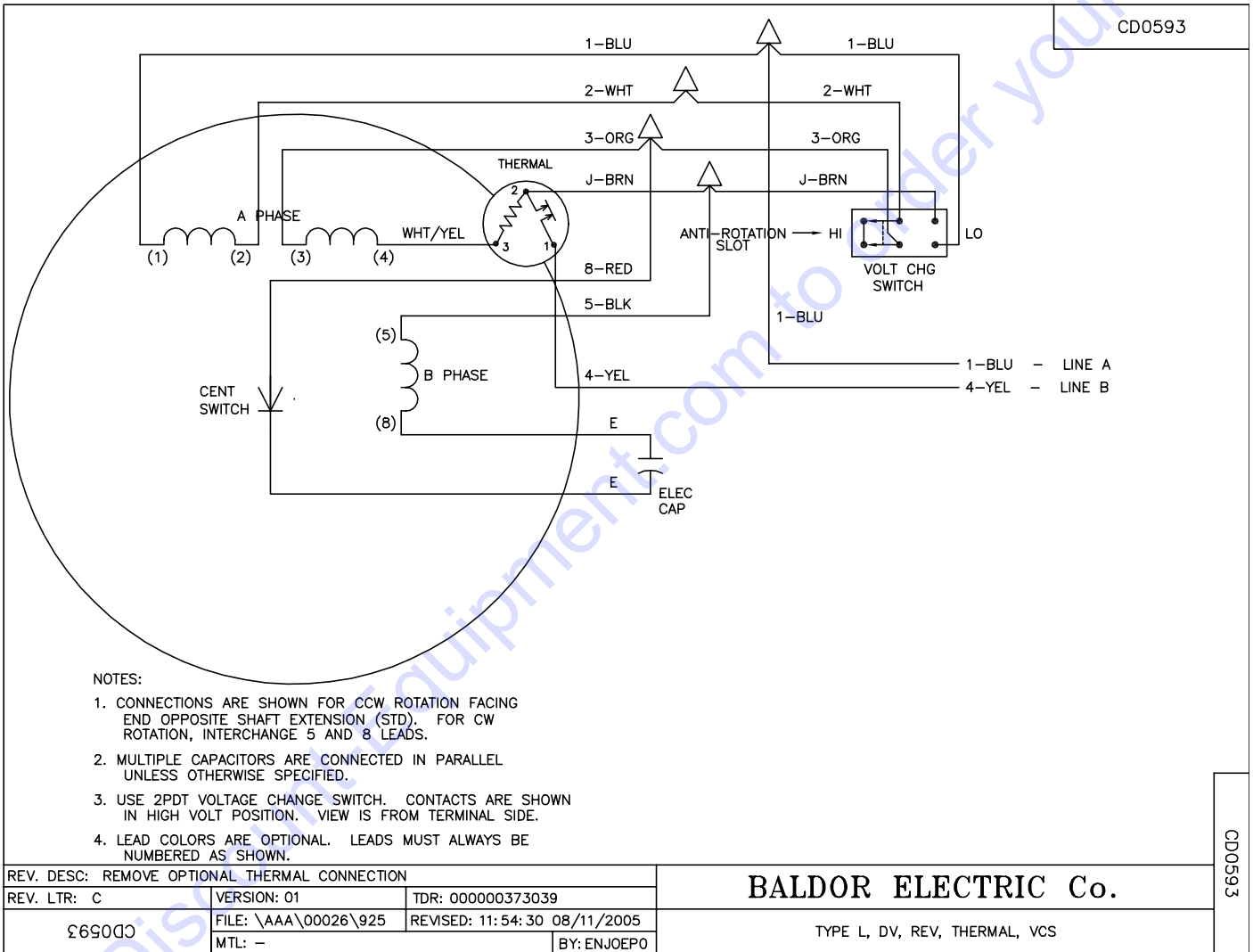
***NOTE:**
TERMINALS 21 & 22 ARE LOCATED
ON TOP. BE SURE THE JUMPER WIRES
ARE CONNECTED TO TERMINALS 13 &
14 WHICH ARE BELOW 21 & 22.

COLOR CODES	
BLK	= BLACK
GRN	= GREEN
WHT	= WHITE



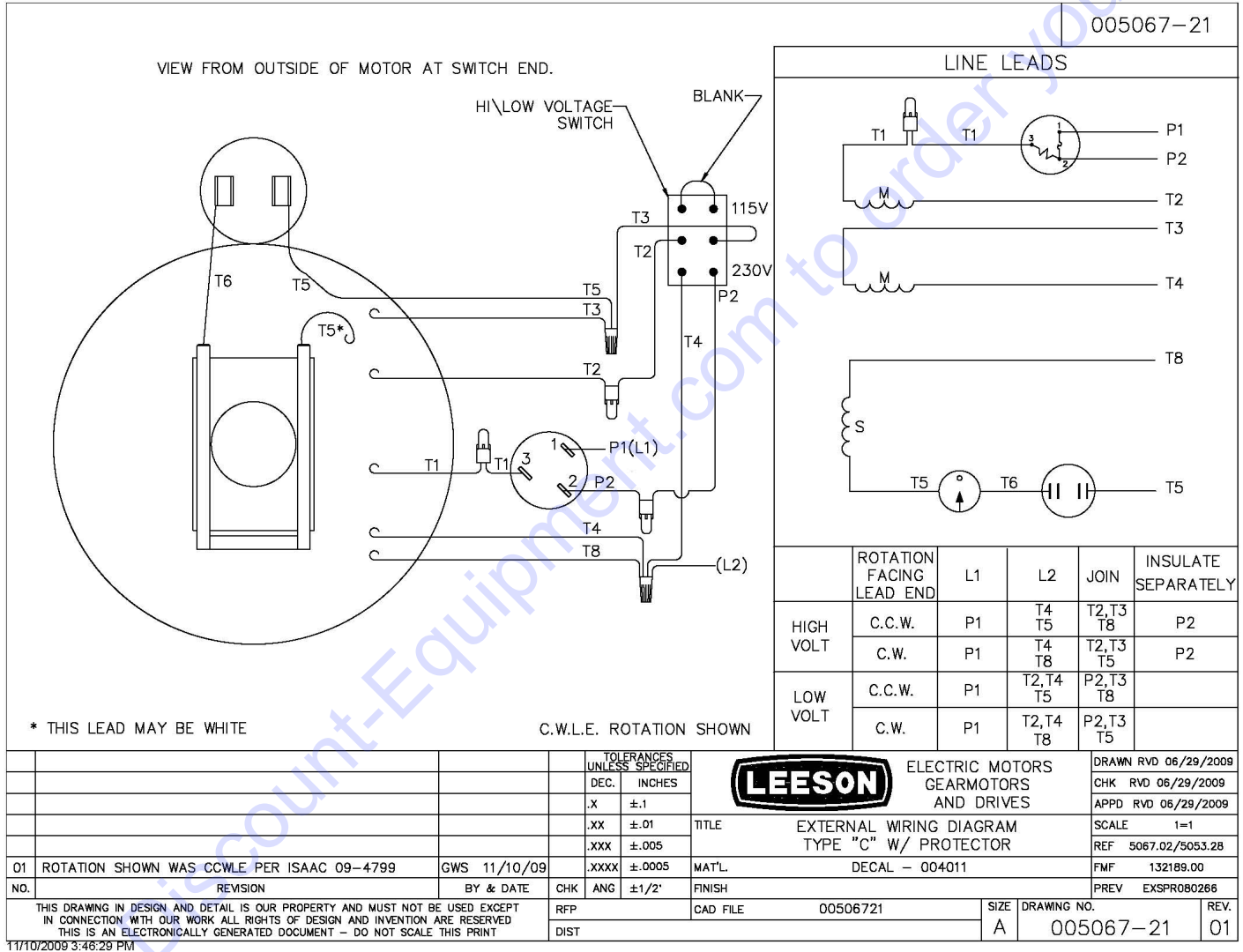
**ILLUSTRATION 17:
MOTOR WIRING DIAGRAM FOR 1.5 HP BALDOR**

BALDOR SPEC. NO. 36F57-385
1.5 H.P., 1 PHASE, 60 HERTZ, 1725 RPM,
115/230 VOLT, 19/9.5 FULL LOAD AMPS



**ILLUSTRATION 18:
MOTOR WIRING DIAGRAM FOR 1.5 HP LEESON**

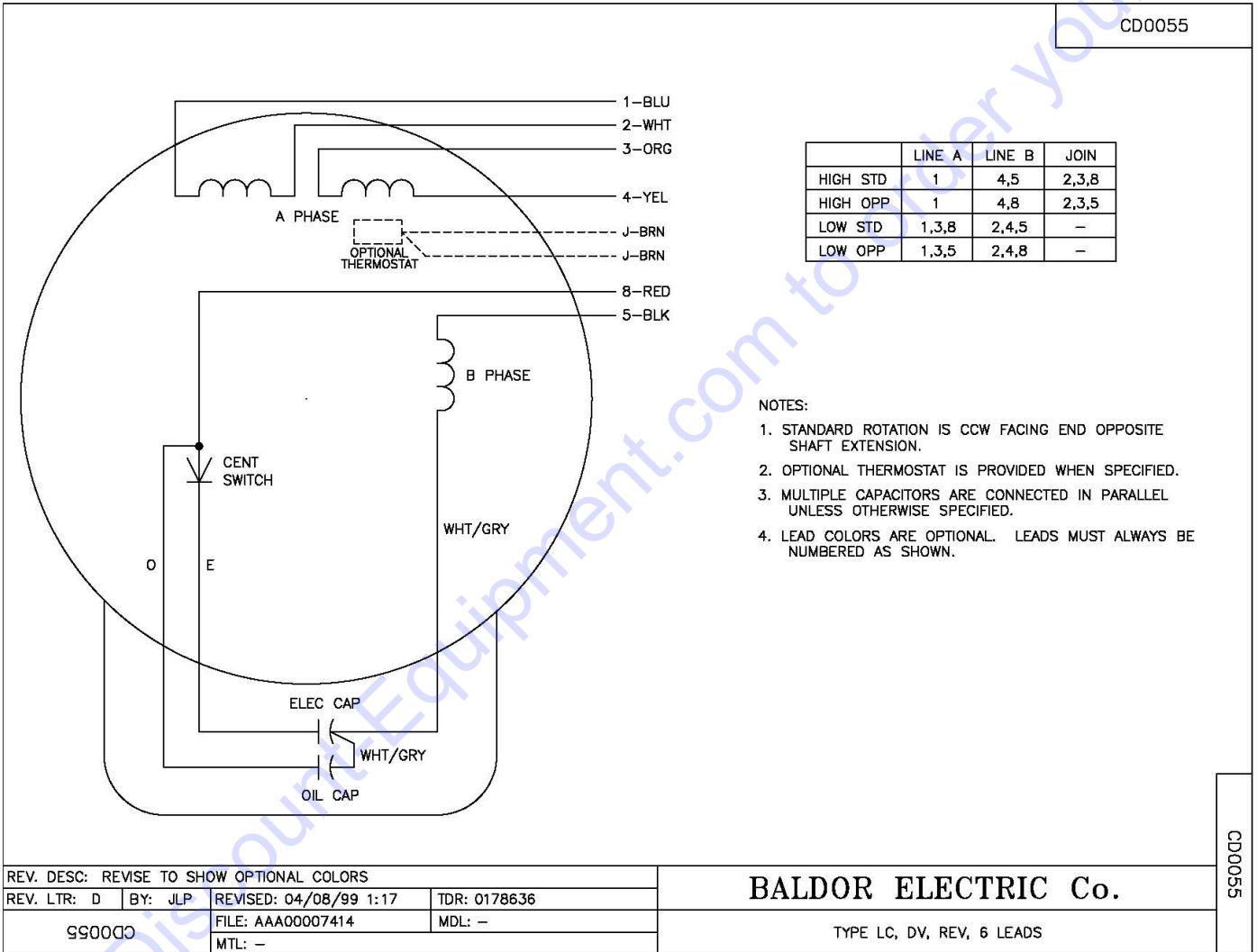
LEESON CAT. NO. 132189
1.5 H.P., 1 PHASE, 60 HERTZ, 1740 RPM,
115/230 VOLT, 20/10 FULL LOAD AMPS



**ILLUSTRATION 19:
MOTOR WIRING DIAGRAM FOR 2 & 3 HP BALDOR**

BALDOR CAT. NO. L3605T-50
2.0 H.P., 1 PHASE, 50 HERTZ, 1425 RPM,
110/220 VOLT, 20/10 FULL LOAD AMPS

BALDOR CAT. NO. L3609T
3.0 H.P., 1 PHASE, 60 HERTZ, 1725 RPM,
115/230 VOLT, 28/14 FULL LOAD AMPS
(230V, 14A RECOMMENDED)



PARTS FINDER

**Search Website
by Part Number**



**Search Manual
Library For Parts
Manual & Lookup Part
Numbers – Purchase
or Request Quote**

Search Manuals

Enter your information to help us find the right parts manual for your machine.

* Brand:

* Model:

* Serial:

* Part Number:

SEARCH

**Can't Find Part or
Manual? Request Help
by Manufacturer,
Model & Description**

Parts Order Form

Please fill in the following information to help us find the right part for your machine.

Manufacturer:	<input type="text"/>
Model:	<input type="text"/>
Description:	<input type="text"/>
Part Number:	<input type="text"/>
Quantity:	<input type="text"/>
Notes:	<input type="text"/>

Submit

Discount-Equipment.com is your online resource for quality parts & equipment.

Florida: **561-964-4949** Outside Florida TOLL FREE: **877-690-3101**

Need parts?

Click on this link: <http://www.discount-equipment.com/category/5443-parts/> and choose one of the options to help get the right parts and equipment you are looking for. Please have the machine model and serial number available in order to help us get you the correct parts. If you don't find the part on the website or on one of the online manuals, please fill out the request form and one of our experienced staff members will get back to you with a quote for the right part that your machine needs.

We sell worldwide for the brands: Genie, Terex, JLG, MultiQuip, Mikasa, Essick, Whiteman, Mayco, Toro Stone, Diamond Products, Generac Magnum, Airman, Haulotte, Barreto, Power Blanket, Nifty Lift, Atlas Copco, Chicago Pneumatic, Allmand, Miller Curber, Skyjack, Lull, Skytrak, Tsurumi, Husquvarna Target, Stow, Wacker, Sakai, Mi-T-M, Sullair, Basic, Dynapac, MBW, Weber, Bartell, Bennar Newman, Haulotte, Ditch Runner, Menegotti, Morrison, Contec, Buddy, Crown, Edco, Wyco, Bomag, Laymor, EZ Trench, Bil-Jax, F.S. Curtis, Gehl Pavers, Heli, Honda, ICS/PowerGrit, IHI, Partner, Imer, Clipper, MMD, Koshin, Rice, CH&E, General Equipment, Amida, Coleman, NAC, Gradall, Square Shooter, Kent, Stanley, Tamco, Toku, Hatz, Kohler, Robin, Wisconsin, Northrock, Oztec, Toker TK, Rol-Air, APT, Wylie, Ingersoll Rand / Doosan, Innovatech, Con X, Ammann, Mecalac, Makinex, Smith Surface Prep, Small Line, Wanco, Yanmar