



## PARTS BULLETIN

### MOTOR TYPE CHANGE ON 1.5 H.P. 1-PHASE ELECTRIC EQUIPMENT EFFECTIVE OCT. 2009

Leeson Motor (Cat. No. 132189) replaces Baldor Motor (Spec. No. 36F57-385) on the following Equipment:

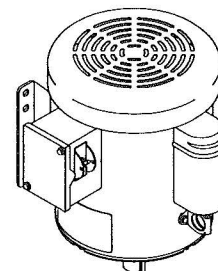
- 2EC Concrete Floor Grinder, Starting w/ Serial # 0910100069
- CPM4 Scarifier/Planer, Starting w/ Serial # 100310114

The New Model Suffix for this Power Option will be 1.5L (1.5HP Leeson).

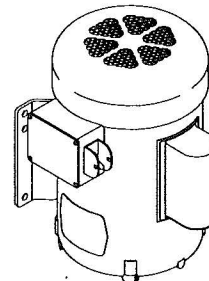
- Complete Model Number and SKU Numbers:
- Model # 2EC-1.5L , SKU # 50100
  - Model # CPM4-1.5L, SKU # 70500

Please Note: Because the Shaft Diameter changed (see below), the Part Numbers for the Sheave or the Sheave Bushing mounted to the Motor will also change. See Parts List for more information.

MOTOR SPECIFICATION CHART		
	LEESON Cat. No. 132189	BALDOR Spec. 36F57-385
Part Number	16070	76027
Horse Power	1.5	1.5
Phase	1	1
Hertz	60	60
Volts	115/230	115/230
Full Load Amps	20/10	19/9.5
RPM	1740	1725
Frame	184T	184T
Shaft	1-1/8"	7/8"
Weight	57 Lbs.	64 Lbs.



NEW  
LEESON  
MOTOR

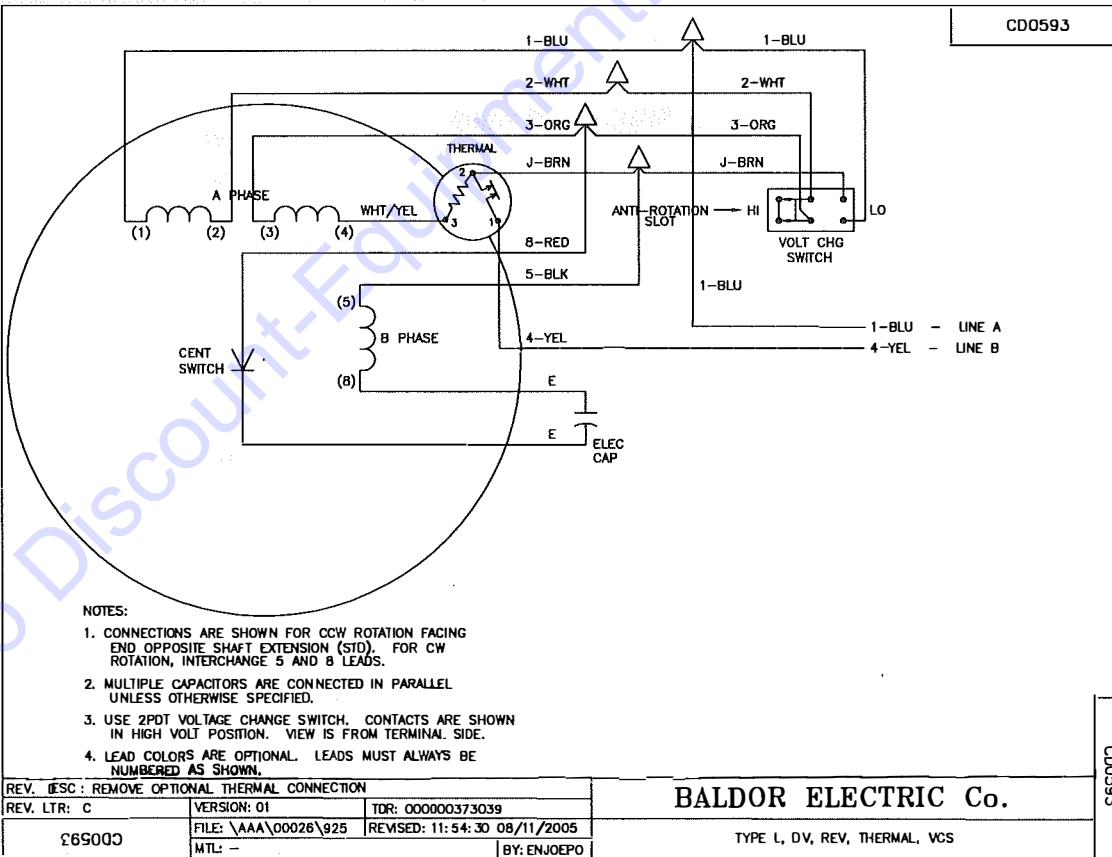
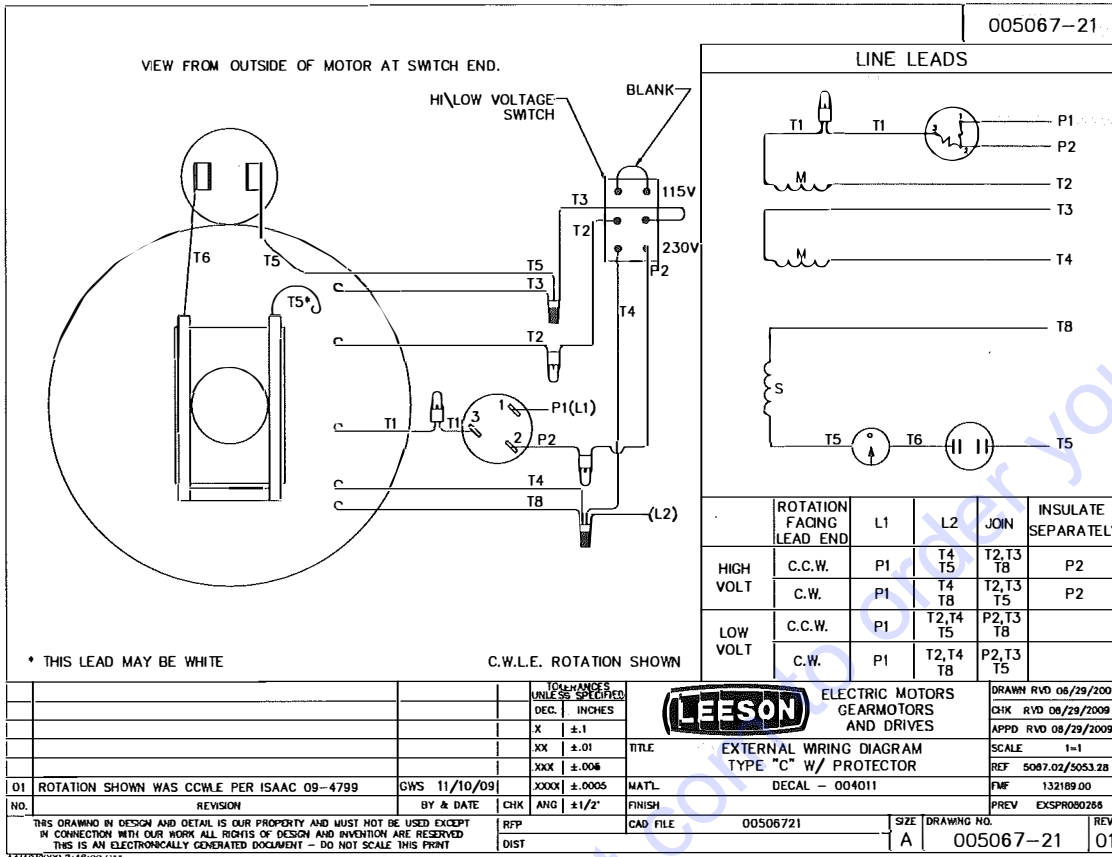


OLD  
BALDOR  
MOTOR

#### REPLACEMENT PARTS FOR NEW LEESON MOTOR:

- PART # 16524 - START CAPACITOR, LEESON 003008.06 1190MFD 125V
- PART # 16161 - RESET BUTTON, LEESON 300048.04 THERMAL PROTECTOR BRJ44DB
- PART # 16534 - TOGGLE SWITCH DPDT (PUSH-ON TERM.), LEESON 002932.01

See the reverse side of this page for the Wiring Diagrams for these Motors.



# PARTS FINDER

**Search Website  
by Part Number**



**Search Manual  
Library For Parts  
Manual & Lookup Part  
Numbers – Purchase  
or Request Quote**

**Search Manuals**

Enter your information to help us find the right parts manual for your machine.

\* Brand:

\* Model:

\* Serial:

\* Part Number:

SEARCH

**Can't Find Part or  
Manual? Request Help  
by Manufacturer,  
Model & Description**

**Parts Order Form**

Please fill in the following information to help us find the right part for your machine.

Manufacturer:	<input type="text"/>
Model:	<input type="text"/>
Description:	<input type="text"/>
Part Number:	<input type="text"/>
Quantity:	<input type="text"/>
Notes:	<input type="text"/>

Submit

Discount-Equipment.com is your online resource for quality parts & equipment.

Florida: **561-964-4949** Outside Florida TOLL FREE: **877-690-3101**

**Need parts?**

Click on this link: <http://www.discount-equipment.com/category/5443-parts/> and choose one of the options to help get the right parts and equipment you are looking for. Please have the machine model and serial number available in order to help us get you the correct parts. If you don't find the part on the website or on one of the online manuals, please fill out the request form and one of our experienced staff members will get back to you with a quote for the right part that your machine needs.

We sell worldwide for the brands: Genie, Terex, JLG, MultiQuip, Mikasa, Essick, Whiteman, Mayco, Toro Stone, Diamond Products, Generac Magnum, Airman, Haulotte, Barreto, Power Blanket, Nifty Lift, Atlas Copco, Chicago Pneumatic, Allmand, Miller Curber, Skyjack, Lull, Skytrak, Tsurumi, Husquvarna Target, Stow, Wacker, Sakai, Mi-T-M, Sullair, Basic, Dynapac, MBW, Weber, Bartell, Bennar Newman, Haulotte, Ditch Runner, Menegotti, Morrison, Contec, Buddy, Crown, Edco, Wyco, Bomag, Laymor, EZ Trench, Bil-Jax, F.S. Curtis, Gehl Pavers, Heli, Honda, ICS/PowerGrit, IHI, Partner, Imer, Clipper, MMD, Koshin, Rice, CH&E, General Equipment, Amida, Coleman, NAC, Gradall, Square Shooter, Kent, Stanley, Tamco, Toku, Hatz, Kohler, Robin, Wisconsin, Northrock, Oztec, Toker TK, Rol-Air, APT, Wylie, Ingersoll Rand / Doosan, Innovatech, Con X, Ammann, Mecalac, Makinex, Smith Surface Prep, Small Line, Wanco, Yanmar