



REVISED STARTING  
SERIAL # 120610027

## PARTS LIST MANUAL

### MODEL SEC



### SINGLE-DISC CONCRETE FLOOR GRINDER

SKU #	MODEL #	POWER OPTION
50200	SEC-1.5L	LEESON MOTOR 1.5HP 60Hz 1-PHASE 115/230V
52500	SEC-1.75L/50/1	LEESON MOTOR 1.75HP 50Hz 1-PHASE 110/220V



A Division of Equipment Development Company, Inc.

# PARTS FINDER

**Search Website  
by Part Number**



**Search Manual  
Library For Parts  
Manual & Lookup Part  
Numbers – Purchase  
or Request Quote**

**Search Manuals**

Enter your information to help us find the right parts manual for your machine.

\* Brand:

\* Model:

\* Serial:

\* Part Number:

SEARCH

**Can't Find Part or  
Manual? Request Help  
by Manufacturer,  
Model & Description**

**Parts Order Form**

Please fill in the following information to help us find the right part for your machine.

Manufacturer:	<input type="text"/>
Model:	<input type="text"/>
Description:	<input type="text"/>
Part Number:	<input type="text"/>
Quantity:	<input type="text"/>
Notes:	<input type="text"/>

Submit

Discount-Equipment.com is your online resource for quality parts & equipment.

Florida: **561-964-4949** Outside Florida TOLL FREE: **877-690-3101**

**Need parts?**

Click on this link: <http://www.discount-equipment.com/category/5443-parts/> and choose one of the options to help get the right parts and equipment you are looking for. Please have the machine model and serial number available in order to help us get you the correct parts. If you don't find the part on the website or on one of the online manuals, please fill out the request form and one of our experienced staff members will get back to you with a quote for the right part that your machine needs.

We sell worldwide for the brands: Genie, Terex, JLG, MultiQuip, Mikasa, Essick, Whiteman, Mayco, Toro Stone, Diamond Products, Generac Magnum, Airman, Haulotte, Barreto, Power Blanket, Nifty Lift, Atlas Copco, Chicago Pneumatic, Allmand, Miller Curber, Skyjack, Lull, Skytrak, Tsurumi, Husquvarna Target, Stow, Wacker, Sakai, Mi-T-M, Sullair, Basic, Dynapac, MBW, Weber, Bartell, Bennar Newman, Haulotte, Ditch Runner, Menegotti, Morrison, Contec, Buddy, Crown, Edco, Wyco, Bomag, Laymor, EZ Trench, Bil-Jax, F.S. Curtis, Gehl Pavers, Heli, Honda, ICS/PowerGrit, IHI, Partner, Imer, Clipper, MMD, Koshin, Rice, CH&E, General Equipment, Amida, Coleman, NAC, Gradall, Square Shooter, Kent, Stanley, Tamco, Toku, Hatz, Kohler, Robin, Wisconsin, Northrock, Oztec, Toker TK, Rol-Air, APT, Wylie, Ingersoll Rand / Doosan, Innovatech, Con X, Ammann, Mecalac, Makinex, Smith Surface Prep, Small Line, Wanco, Yanmar

## READ AND UNDERSTAND THE OPERATORS INSTRUCTION MANUAL *THOROUGHLY* BEFORE ATTEMPTING TO OPERATE THIS EQUIPMENT.



**Death or serious injury could occur if this machine is used improperly.**



### SAFETY MESSAGES

- Safety Instructions are preceded by a graphic alert symbol of DANGER, WARNING, or CAUTION.



Indicates an imminent hazard which, if not avoided, will result in death or serious injury.



Indicates an imminent hazard which, if not avoided, can result in death or serious injury.



Indicates hazards which, if not avoided, could result in serious injury and or damage to the equipment.

### GASOLINE/PROPANE POWERED EQUIPMENT



- Engine exhaust from this product contains chemicals known to the State of California to cause cancer, birth defects or other reproductive harm.



- Gasoline is extremely flammable and poisonous. It should only be dispensed in well ventilated areas, and with a cool engine.

- Small gasoline engines produce high concentrations of carbon monoxide (CO) example: a 5 HP 4 cycle engine operation in an enclosed 100,000 cu. ft. area with only one change of air per hour is capable of providing deadly concentrations of CO in less than fifteen minutes. Five changes of air in the same area will produce noxious fumes in less than 30 minutes. Gasoline or propane powered equipment should not be used in enclosed or partially enclosed areas. Symptoms of CO poisoning include, headache, nausea, weakness, dizziness, visual problems and loss of consciousness. If symptoms occur - get into fresh air and seek medical attention immediately.

### ELECTRICAL POWERED EQUIPMENT



Extreme care must be taken when operating electric models with water present: Ensure power cord is properly grounded, is attached to a Ground-Fault-Interrupter (GFI) outlet, and is undamaged.

- Check all electrical cables - be sure connections are tight and cable is continuous and in good condition. Be sure cable is correctly rated for both the operating current and voltage of this equipment.
- Improper connection of the equipment-grounding conductor can result in a risk of electric shock. Check with qualified electrician or service person if there is any doubt as to whether the outlet is properly grounded. Adhere to all local codes and ordinances.
- NOTE:** In the event of a malfunction or breakdown, grounding provides a path of least resistance for the electric current to dissipate. The motor is equipped with a grounded plug and must be connected to an outlet that is properly installed and properly grounded. **DO NOT** modify the plug provided on the motor. If the plug does not fit the outlet have a qualified electrician install the proper receptacle.
- Switch motor OFF **before** disconnecting power.

- Do not disconnect power by pulling cord. To disconnect, grasp the plug, not the cord.
- Unplug power cord at the machine when not in use and before servicing.

### GENERAL INSTRUCTIONS

- Equipment should only be operated by trained personnel in good physical condition and mental health (not fatigued). The operator and maintenance personnel must be physically able to handle the bulk weight and power of this equipment.
- This is a one person tool. Maintain a safe operating distance to other personnel. It is the **operators' responsibility** to keep other people (workers, pedestrians, bystanders, etc.) away during operation. Block off the work area in all directions with roping, safety netting, etc. for a safe distance. Failure to do so may result in others being injured by flying debris or exposing them to harmful dust and noise.
- This equipment is intended for commercial use only.
- For the operator's safety and the safety of others, always keep all guards in place during operation.
- Never let equipment run unattended.



- Personal Protection Equipment and proper safety attire must be worn when operating this machinery. The operator must wear approved safety equipment appropriate for the job such as hard hat and safety shoes when conditions require. Hearing protection **MUST** be used (operational noise levels of this equipment may exceed 90db). Eye protection **MUST** be worn at all times.



Keep body parts and loose clothing away from moving parts. Failure to do so could result in dismemberment or death.

- Do not modify the machine.
  - Stop motor/engine when adjusting or servicing this equipment.
- Maintain a safe operating distance from flammable materials. Sparks from the cutting-action of this machine can ignite flammable materials or vapors.

### DUST WARNING



Some dust created by power sanding, sawing, grinding, drilling, and other construction activities contains chemicals known to cause cancer, birth defects, or other reproductive harm. Some examples of these chemicals are:

- Lead from lead-based paints, and
- Crystalline silica from bricks and concrete and other masonry products.

Your risk of exposure to these chemicals varies depending on how often you do this type of work. To reduce your risk: work in a well ventilated area, use a dust control system, such as an industrial-style vacuum, and wear approved personal safety equipment, such as a dust/particle respirator designed to filter out microscopic particles.

# PARTS LIST MANUAL

## MODEL SEC

### SINGLE-DISC CONCRETE FLOOR GRINDER

#### TABLE OF CONTENTS

<u>Section</u>	<u>Page Number</u>
Safety Messages and General Instructions .....	2
How To Order Replacement Parts .....	3
Illustration 1: Main Grouping .....	4, 5
Illustration 2: Water Valve & Hose Grouping .....	6
Illustration 3: Multi-Accessory Disc Assembly .....	7
Illustration 4: Tool Box & Multi-Disc Accessories .....	8
Illustration 5: Dyma-Sert™ & PCDyma-Sert™ Assemblies .....	9
Illustration 6: Strip-Sert™ Assembly .....	10
Illustration 7: Optional Pad Driver Assembly .....	11
Illustration 8: Motor & Belt Drive Grouping .....	12, 13
Illustration 9: Switch Wiring Diagram .....	14
Illustration 10: Wiring Diagram for 60Hz Motor .....	15
Illustration 11: Wiring Diagram for 50Hz Motor .....	16
Illustration 12: Decals .....	17
Blank Page .....	18
Notes .....	19
Limited Equipment Warranty of Sale - Terms & Conditions .....	20 (Back Page)



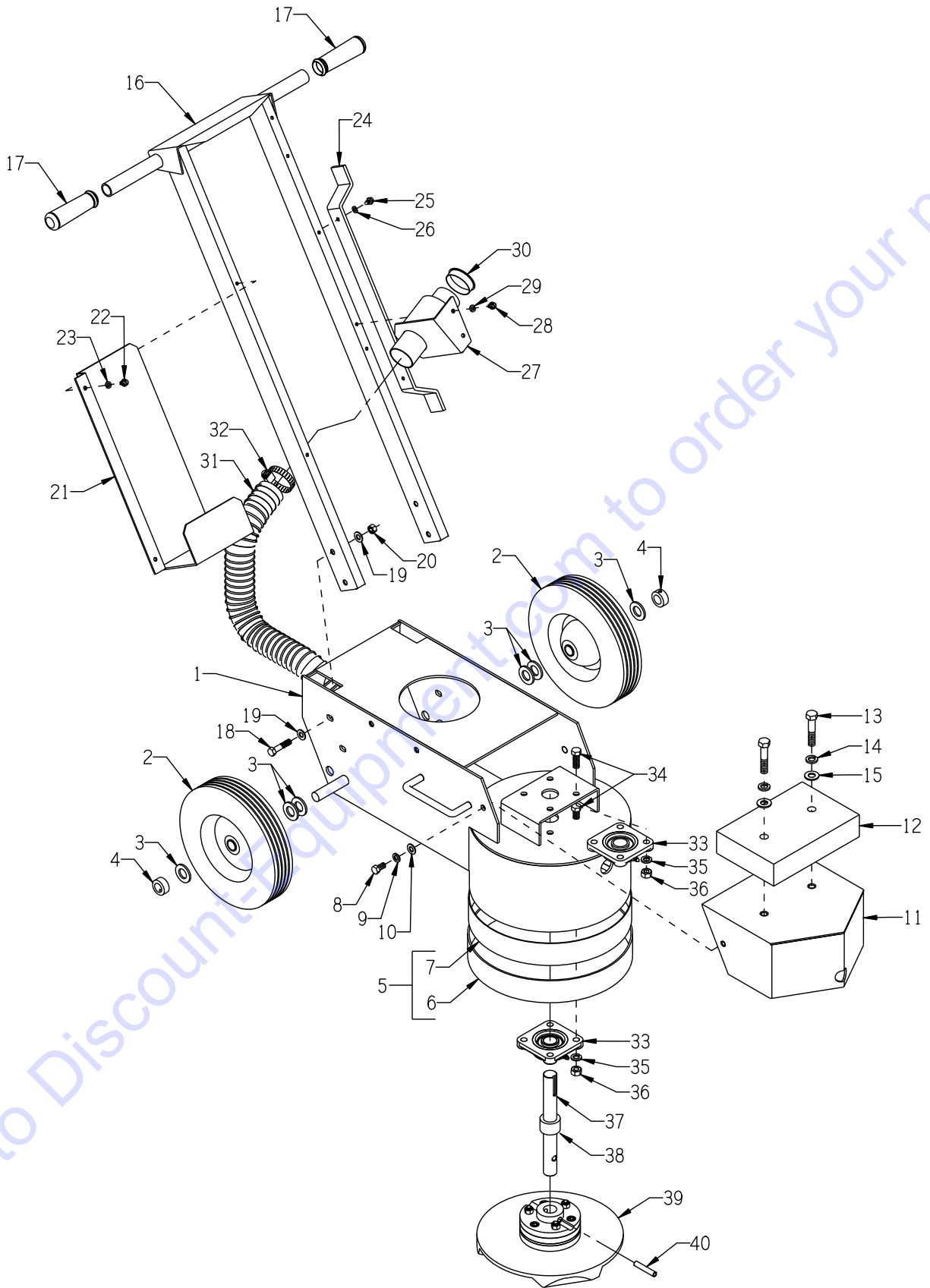
A Division of Equipment Development Company, Inc.

Printed in USA

JWA ©2012

**Page 3**

**ILLUSTRATION 1 : MAIN GROUPING**

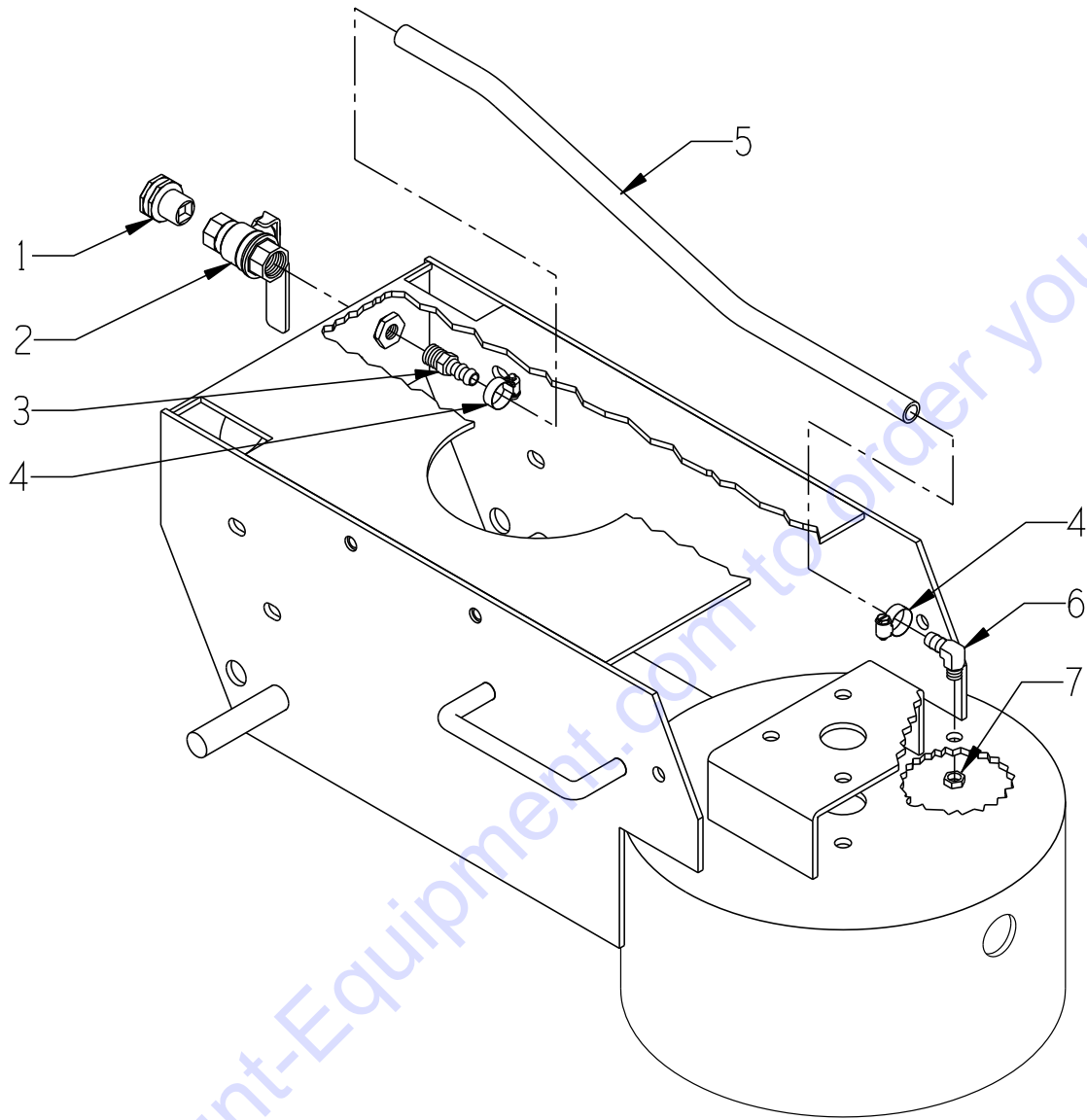


PARTS LISTING - ILLUSTRATION 1: MAIN GROUPING			
ITEM #	PART #	DESCRIPTION	QTY.
1	86401	MAIN FRAME, SEC(2)	1
2	28003	WHEEL 10 X 2-1/4 X 3/4"BRG, SEC	2
3	10009	WASHER, FLAT 3/4 SAE ZINC	6
4	10428	COLLAR, LOCKING 3/4"ID	2
5	86426K	RUBBER SKIRT W/ VELCRO LOOP & HOOK (INCLUDES ITEMS 6 & 7 TOGETHER)	1
6	86426	RUBBER SKIRT W/ VELCRO-LOOP ONLY, 2 X 39-1/8 (THESE 2 PIECES ARE SEWN TOGETHER)	1
7	86427	VELCRO-HOOK ONLY, 2" X 37-1/2", SEC (THIS PIECE IS PLACED AROUND THE BOTTOM EDGE OF THE SHROUD)	1
8	10907	SCREW, CAP 3/8-16 X 3/4	2
9	10811	WASHER, LOCK 3/8 ZINC	2
10	10025	WASHER, FLAT 3/8 SAE ZINC	2
11	86402	HOOD, SEC(2)	1
12	86345	WEIGHT BLOCK, 30 LB.	1
13	10323	SCREW, CAP 1/2-13 X 2-1/2	2
14	10045	WASHER, LOCK 1/2 ZINC	
15	10312	WASHER, FLAT 1/2 SAE ZINC	2
16	86304S	HANDLE BAR, SEC	1
17	10608	GRIP, HAND 1" MODEL AT	2
18	10029	SCREW, CAP 3/8-24 X 1-3/4	4
19	10025	WASHER, FLAT 3/8 SAE ZINC	8
20	10004	NUT, HEX LOCK 3/8-24 ZINC	4
21	86417	TRAY, TOOL BOX, SEC	1
22	10846	SCREW, CAP STSHW 1/4-20 X 1/2	2
23	10038	WASHER, LOCK 1/4 ZINC	2
24	86419	HOLDER, POWER CORD	1
25	10846	SCREW, CAP STSHW 1/4-20 X 1/2	2
26	10038	WASHER, LOCK 1/4 ZINC	2
27	86347	BRACKET, MULTI-VAC PORT 2-3"	1
28	10846	SCREW, CAP STSHW 1/4-20 X 1/2	2
29	10038	WASHER, LOCK 1/4 ZINC	2
30	65021	CAP/PLUG 2" RED PLASTIC, FLANGED	1
31	77113	HOSE, FLEX 2"ID X 32"L, GRINDERS	1
32	10766	CLAMP, HOSE, SAE #32, ADJ. TO 2-1/2	2
33	77008	BEARING, BALL 1" 4-HOLE FLANGE, ND	2
34	10003	SCREW, CAP 7/16-20 X 1-1/4 ZINC	8
35	10450	WASHER, LOCK 7/16 ZINC	8
36	10481	NUT, HEX 7/16-20 ZINC	8
37	86416	SHAFT, DRIVEN 1" X 9"L, SEC(2)	1
38	86232	SPACER 1-1/2"OD x 1"ID x 1"L", DY-1 & S-EC HEAD	1
39	8888	DISC ASSY. COMPLETE, MULTI-ACCY. RH (REFER TO ILLUSTRATION 3 FOR BREAKDOWN)	1
40	10063	PIN, ROLL 3/8 X 2	1

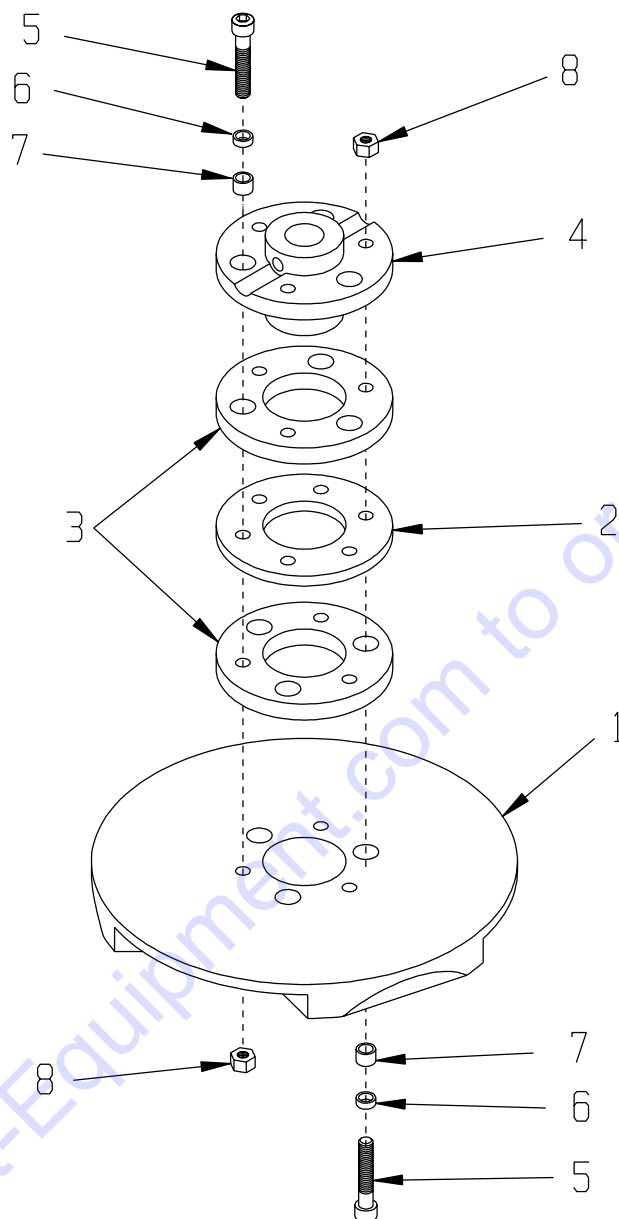


A Division of Equipment Development Company, Inc.

**ILLUSTRATION 2: WATER VALVE & HOSE GROUPING**



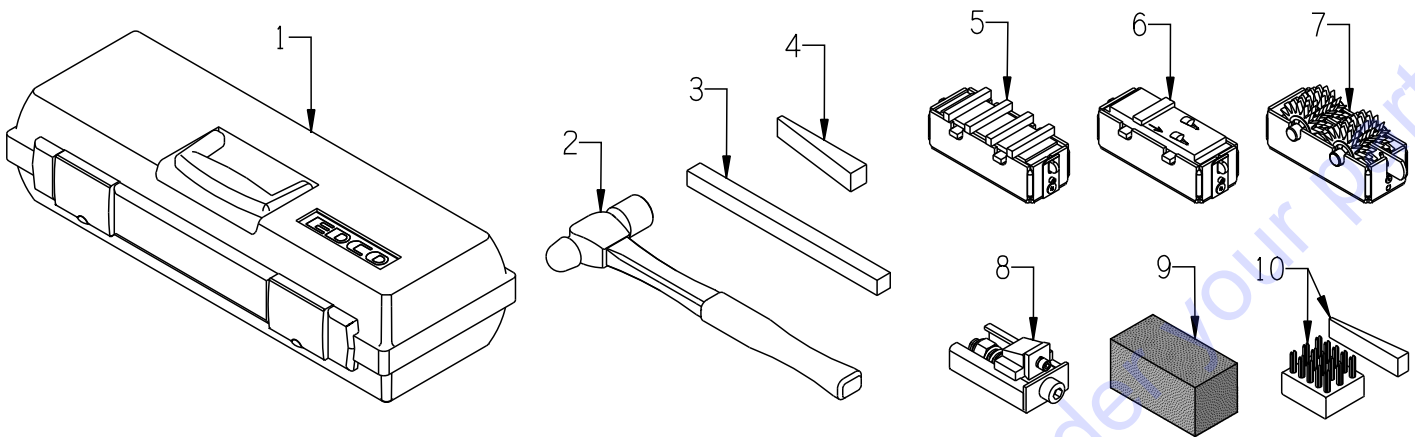
ITEM #	PART #	DESCRIPTION	QTY.
1	80021	CONN., SWIVEL FEM. 3/4HOSE X 1/2MPT	1
2	10711	VALVE, BALL 1/2 FPT	1
3	50075	BARB, 3/8 HOSE X 1/4MPT (BRASS)	1
4	50069	CLAMP, HOSE, SAE #6, ADJ. TO 13/16	2
5	86424	HOSE 3/8"ID X 20"L, SEC	1
6	11562	BARB ELBOW 90, 3/8HOSE X 1/8MPT BRASS	1
7	10864	NUT 1/8-27 PIPE THREAD (BRASS)	1

**ILLUSTRATION 3: MULTI-ACCESSORY DISC ASSEMBLY**


ITEM #	PART #	DESCRIPTION	QTY.
1-8	8888	DISC ASSEMBLY COMPLETE, RIGHT-HAND (ITEMS 1 THRU 8)	1
1	77088	DISC ONLY, MULTI-ACCY. R.H.	1
2	77020	RING, HUB CARRIER, 6-HOLE	1
3	10112	RING, RUBBER, 4-1/2"OD X 1/2"THK	2
4	77010	HUB, ALUMINUM 6-HOLE (GRINDER)	1
5	10114	SCREW, SKT. HD. CAP 3/8-24 X 2-1/4	6
6	10113	SPACER, STEEL 9/16OD X 3/8ID X 7/32"	6
7	10011	SPACER, STEEL 5/8OD X 3/8ID X 3/8"	6
8	10058	NUT, HEX LOCK 3/8-24 W/ NYLON PATCH	6

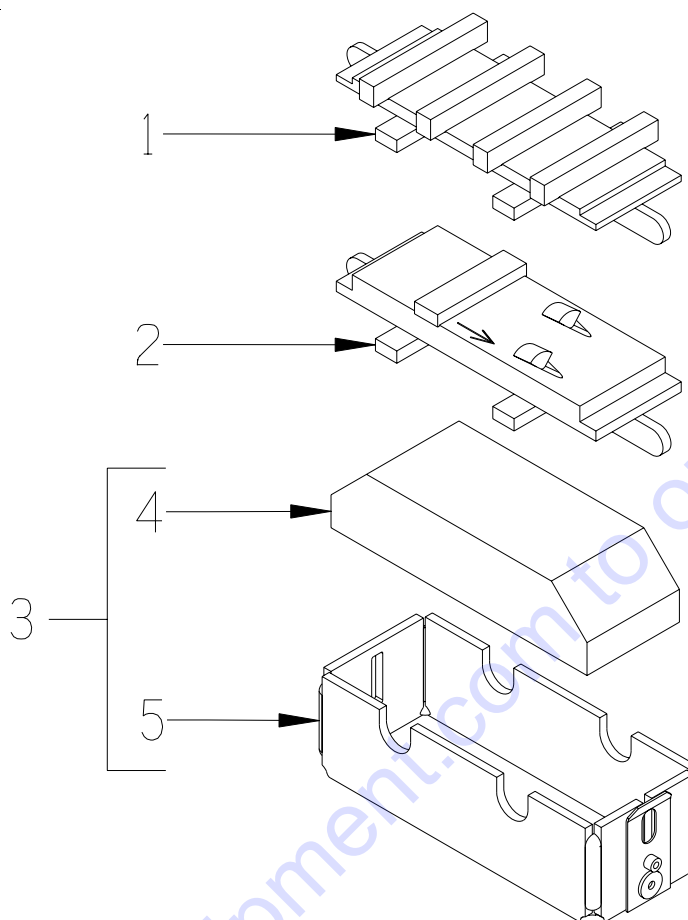


### ILLUSTRATION 4: TOOL BOX & MULTI-DISC ACCESSORIES

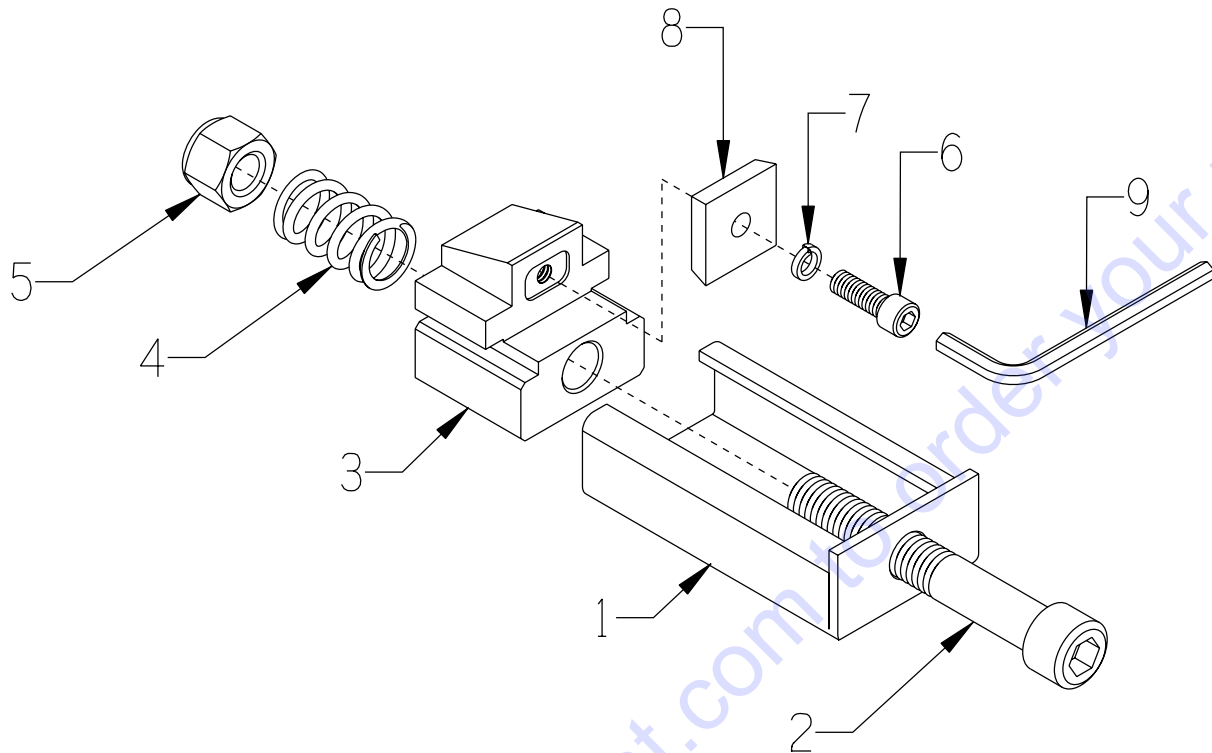


NOTE: REFER TO EDCO PRICE LIST FOR START-UP PAKS AND QUANTITIES

ITEM #	PART #	DESCRIPTION	QTY.*
1-3	12004	TOOL BOX W/ HAMMER & PUNCH, BLACK	1
	12005	TOOL BOX W/ HAMMER & PUNCH, RED	1
1	12001	TOOL BOX, BLACK (DYMA-SERTS™)	1
	12002	TOOL BOX, RED (STRIP-SERTS™)	1
2	12003	HAMMER, BALL PEIN 16 OZ.	1
3	12006	PUNCH, GRINDER WEDGE, 5/8SQ X 9	1
4	12160	WEDGE CG225, HARDWOOD	3
5	----	DYMA-SERT™ ACCY. W/ HOLDING CASE (SEE ILLUS. 5 FOR MORE DETAILS)	3
6	----	PCDYMA-SERT™ ACCY. W/ HOLDING CASE (SEE ILLUS. 5 FOR MORE DETAILS)	3
7	12114 12120 12130	SCARIFIER ACCESSORY: CG221 SCARIFIER HOLDING CASE ONLY CG222 TAW SCARIFIER, STANDARD INSERT CG223 TAW SCARIFIER, HEAVY-DUTY INSERT	3
8	12400	STRIP-SERT™ ASSEMBLY (SEE ILLUS. 6 FOR MORE DETAILS)	3
9	11074 11014 11024 11034 11084	CG224V VITRIFIED GRINDING STONES: C10S SUPER COARSE C10 COARSE C24 MEDIUM C80 FINE C120 SUPER FINE	3
10	12170 12180	CG101 WIRE BRUSH W/JR322 WEDGE WEDGE ONLY JR322, HARDWOOD	3 3
* QUANTITIES ARE THE NUMBER REQUIRED FOR 1-DISC GRINDER			

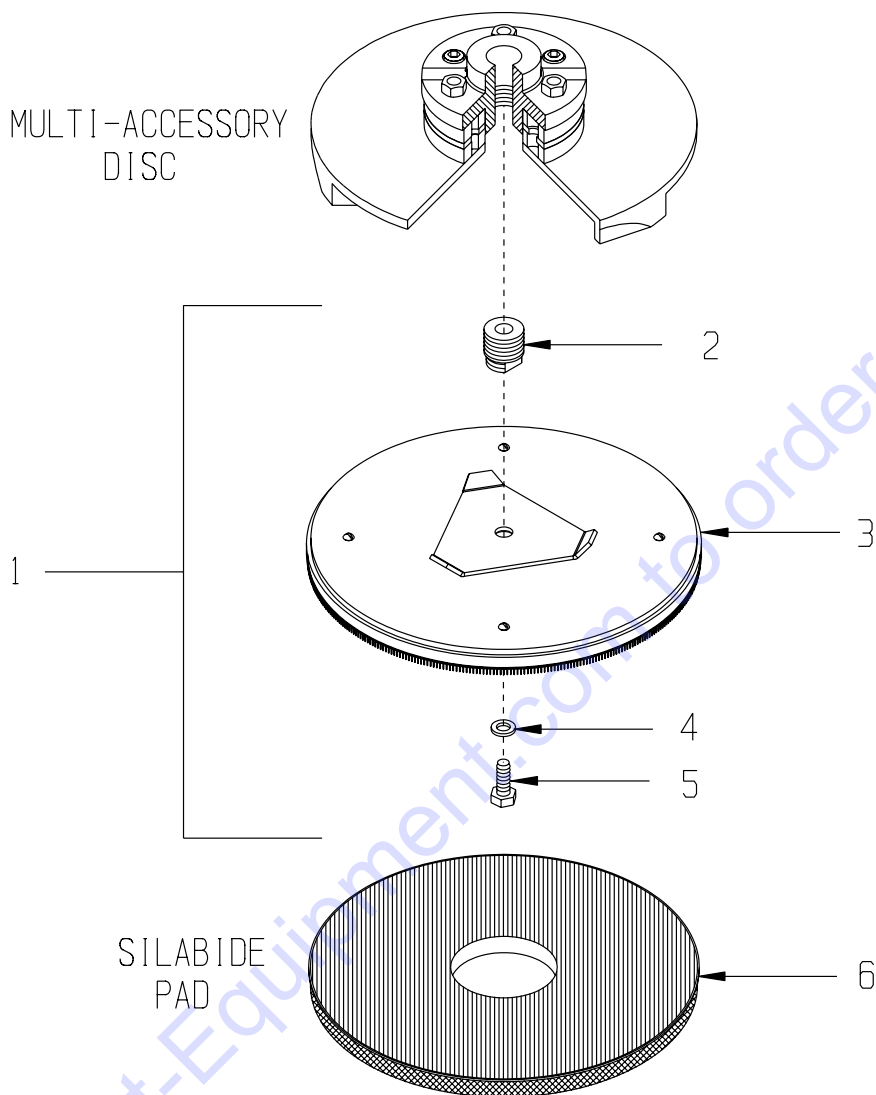
**ILLUSTRATION 5: DYMA-SERT™ & PCDYMA-SERT™ ASSEMBLIES**


ITEM #	PART #	DESCRIPTION	QTY.*
1	19110 19130 19180 19250 19260 19270 19290	DYMA-SERT™ (SOLD SEPARATELY): EG-1X, 30-40 GRIT (GENERAL PURPOSE) EG-2X, 30-40 GRIT (ABRASIVE CONCRETE) EG-3X, 30-40 GRIT (EPOXY MORTARS) EG-5X, 50 GRIT (TERRAZZO) EG-7X, 80 GRIT (TERRAZZO) EG-9X, 120 GRIT (TERRAZZO) EG-23X, 200-230 GRIT (POLISHING)	3
2	EDP2PCD-30	PCDYMA-SERT™ (SOLD SEPARATELY)	3
3	19120	CG221D DYMA-SERT HOLDING CASE W/PAD	3
4	19140	RUBBER SHOCK PAD	3
5	19121	DYMA-SERT™ HOLDING CASE	3
* QUANTITIES BASED ON 1-DISC GRINDER			

**ILLUSTRATION 6: STRIP-SERT™ ASSEMBLY**


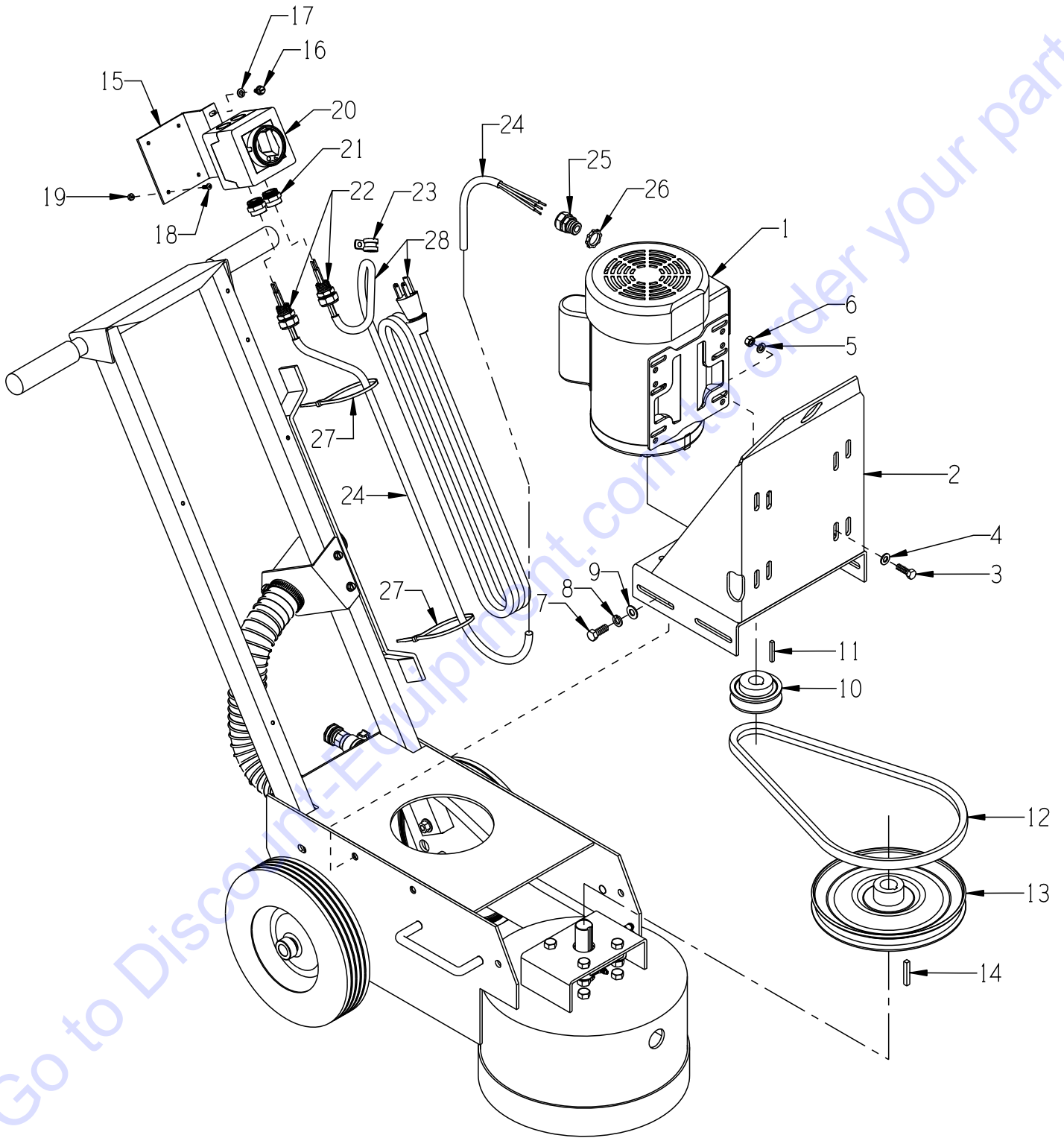
ITEM #	PART #	DESCRIPTION	QTY.
1-8	12400	STRIP-SERT ASSY. WITH PRO TUNGSERT	3*
1-7	12401	STRIP-SERT ASSY. WITHOUT PRO TUNGSERT	3*
1	12404	TUNGSERT HOLDER BOX, STRIP-SERT	1**
2	12405	SCREW, SKT.HD.CAP 1/2-13 X 3.5,GR.5	1**
3	12403	TUNGSERT BLOCK, STRIP-SERT	1**
4	12406	SPRING, COMP. .765"OD X 1.25"FL	1**
5	10155	NUT, HEX NYLON LOCK 1/2-13	1**
6	11573	SCREW, SKT. HD. CAP 1/4-20 X 3/4	1**
7	11688	WASHER, HI-COLLAR LOCK .26ID X .363	1**
8	12407	PRO TUNGSERT (PACK OF 6) INCLUDES: 6 SCREWS & WASHERS, ITEMS 6 & 7 & 1 HEX WRENCH, ITEM 9.	1**
9	12413	WRENCH, HEX L-KEY 3/16", SHORT-ARM	1
* QUANTITIES BASED ON 1-DISC GRINDER ** QUANTITIES BASED ON 1 STRIP-SERT ACCESSORY			

**ILLUSTRATION 7: OPTIONAL PAD DRIVER DISC ASSEMBLY**



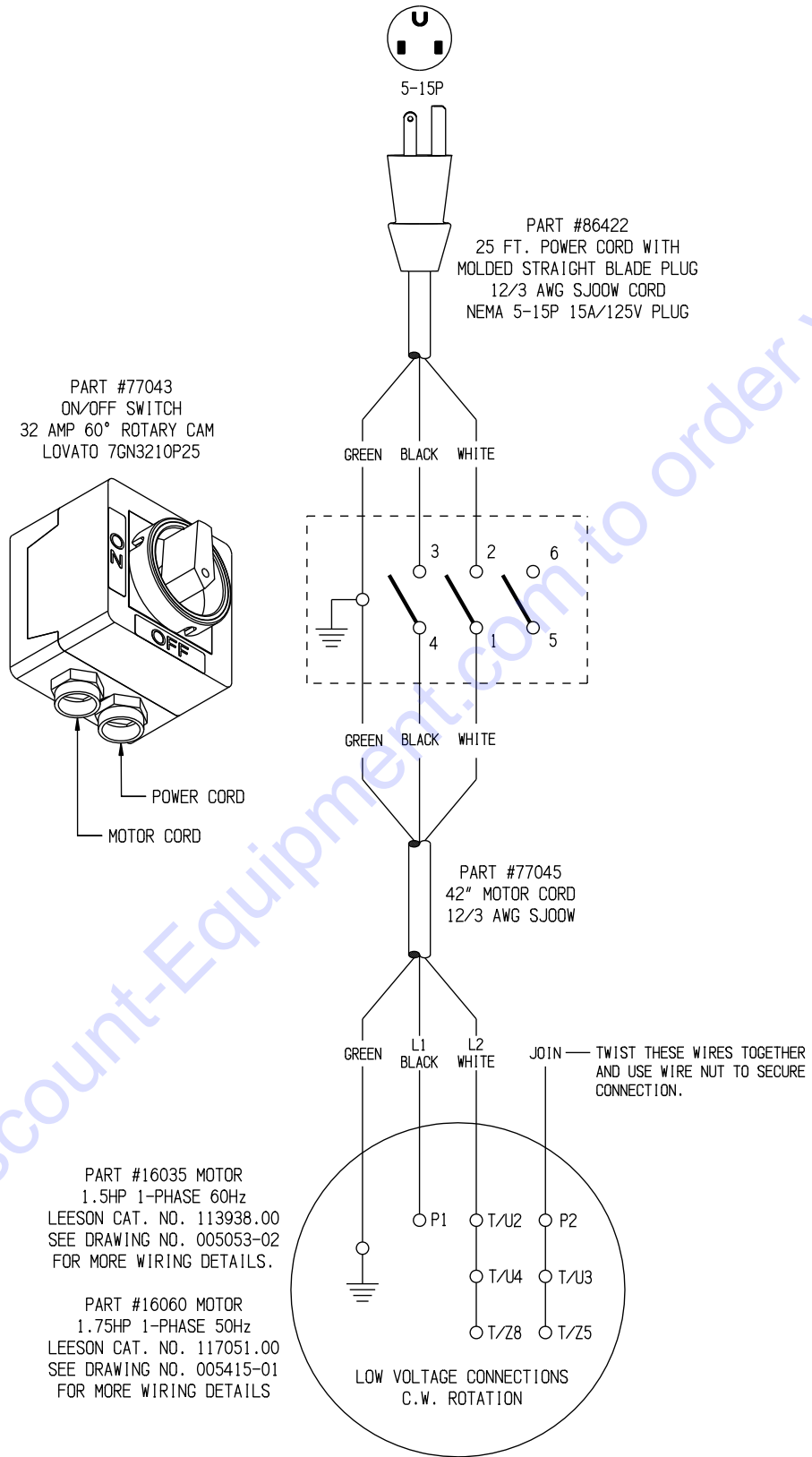
ITEM #	PART #	DESCRIPTION	QTY.*
1	76040	PAD DRIVER DISC ASSEMBLY (INCLUDES ITEMS 2 THRU 5)	1
2	76042	HUB STUD, PAD DRIVER (GRINDER)	1
3	76041	DISC ONLY 11", PAD DRIVER	1
4	10312	WASHER, FLAT 1/2 SAE ZINC	1
5	10304	SCREW, CAP 1/2-20 X 1	1
6	13013	SILABIDE PAD, 11" MEDIUM (NOT INCLUDED W/ ASSEMBLY)	1
*QUANTITIES FOR ITEMS 1 THRU 6 ARE PER 1-DISC GRINDER			

**ILLUSTRATION 8: MOTOR & BELT DRIVE GROUPING**



<b>PARTS LISTING - ILLUSTRATION 8: MOTOR &amp; BELT DRIVE GROUPING</b>			
ITEM #	PART #	DESCRIPTION	QTY.
1	<b>16035</b>	<b>MOTOR, 1.5HP-1PH-60HZ-1725RPM-115/230V-17.2/8.6A LEESON CAT. NO. 113938.00 RED FARM-DUTY</b> <i>REPLACEMENT PARTS:</i>	<b>1</b>
	16178.....	.....CAPACITOR, START, LEESON 003025.15 (500MFD 125V)	1
	16159.....	.....CAPACITOR, RUN, LEESON 003014.20 (20MFD 240V)	1
	16179.....	.....RESET BUTTON, LEESON 300033.02 (CED2705)	1
	<b>16060</b>	<b>MOTOR, 1.75HP-1PH-50HZ-1425RPM-110/220V LEESON CAT. NO. 117051.00</b> <i>REPLACEMENT PARTS:</i>	<b>1</b>
	16191	.....CAPACITOR, START, LEESON 003025.11 (650MFD 125V)	1
	16183	.....CAPACITOR, RUN, LEESON 003014.13 (65MFD 240V)	2
	16133	.....RESET BUTTON, LEESON 300117.04 (BRJ42DA)	1
2	86404	MOUNT, MOTOR	1
3	10806	SCREW, CAP 5/16-18 X 1	4
4	10213	WASHER, FLAT 5/16 SAE ZINC	4
5	10801	WASHER, LOCK 5/16 ZINC	4
6	10054	NUT, HEX 5/16-18 ZINC	4
7	10055	SCREW, CAP 3/8-16 X 1	4
8	10811	WASHER, LOCK 3/8 ZINC	4
9	10025	WASHER, FLAT 3/8 SAE ZINC	4
10	77017	SHEAVE 3"OD X 1GR.B X 7/8"BORE	1
11	-----	KEY 3/16"SQ. X 1-3/8 (INCLUDED W/ MOTOR)	1
12	10277	BELT B-38	1
13	86009	SHEAVE 9" OD X 1GR.B X 1" BORE	1
14	40317	KEY 1/4SQ X 1-5/8	1
15	77042	BRACKET, LOVATO ROTARY CAM SWITCH	1
16	10846	SCREW, CAP STSHW 1/4-20 X 1/2	2
17	10038	WASHER, LOCK 1/4 ZINC	2
18	11663	SCREW, MACHINE 8-32 X 1/2 RHCD ZINC	4
19	10462	NUT, KEPS LOCK 8-32 ZINC	4
20	<b>77043</b>	<b>SWITCH, ROTARY CAM ON/OFF, LOVATO</b> <i>REPLACEMENT PARTS:</i>	<b>1</b>
	77043-2.....	.....SWITCH HANDLE, PADLOCKABLE, LOVATO	1
	77043-4.....	.....GASKET RING, OPERATOR, LOVATO	1
21	77043-1	SWITCH ADAPTER, PG16 TO 1/2"NPT	2
22	40066	STRAIN RELIEF 1/2NPT X .350-.450"	2
23	11690	CLAMP, LOOM, 3/8"	1
24	77045	WIRE HARNESS 12/3 X 42"LOA	1
25	16176	STRAIN RELIEF 3/4NPT X .350-.450"	1
26	10740	CONDUIT LOCK NUT 3/4 NP (LOCATED INSIDE JUNCTION BOX)	1
27	10982	TIE, CABLE, BLACK NYLON 11-1/4"	2
28	86422	CORD W/ PLUG, 25FT. POWER, STRAIGHT STYLE PLUG	1

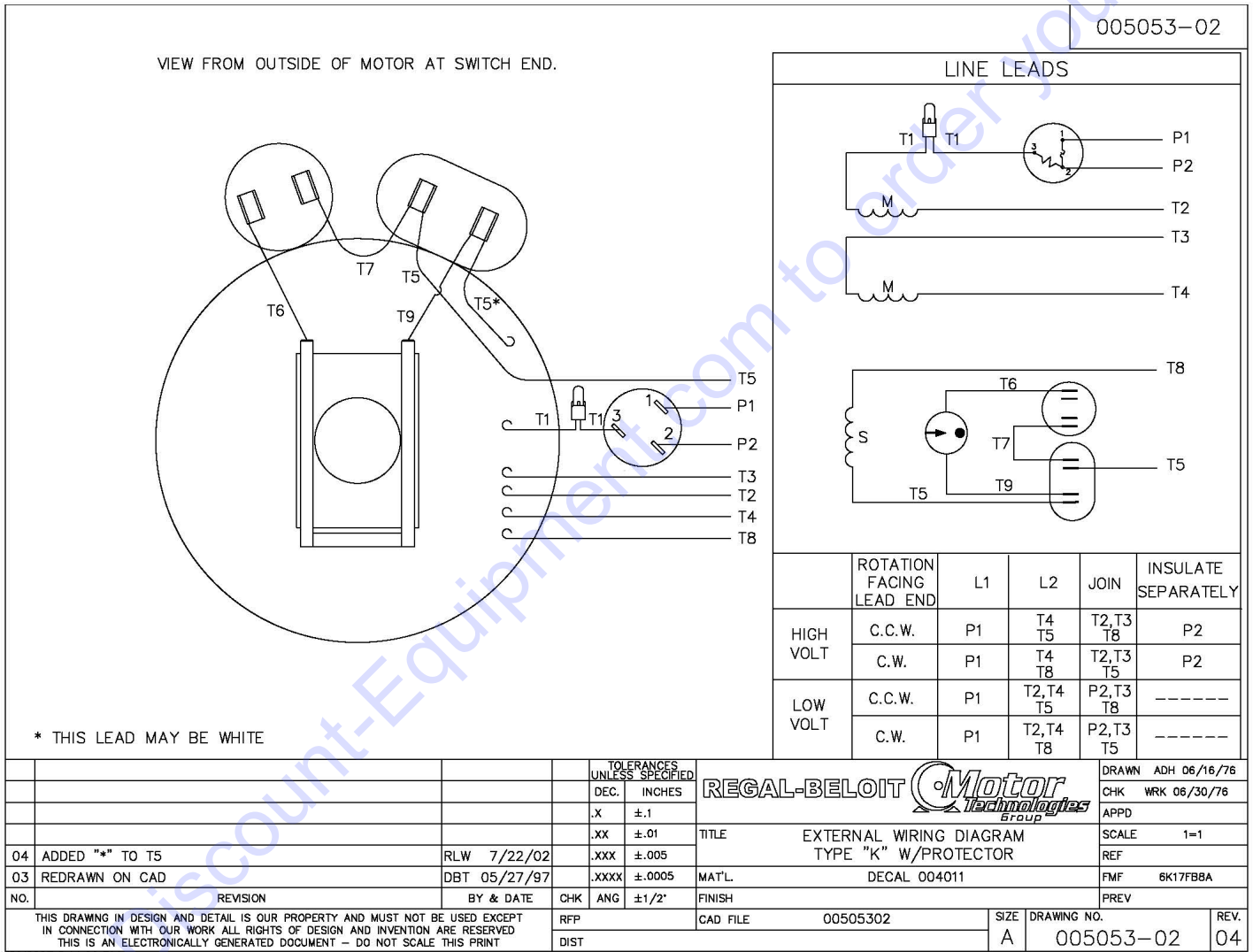
**ILLUSTRATION 9: WIRING DIAGRAM FOR SWITCH**



Go to Discount-Equipment.com to order your parts

**ILLUSTRATION 10:  
WIRING DIAGRAM FOR 60Hz MOTOR**

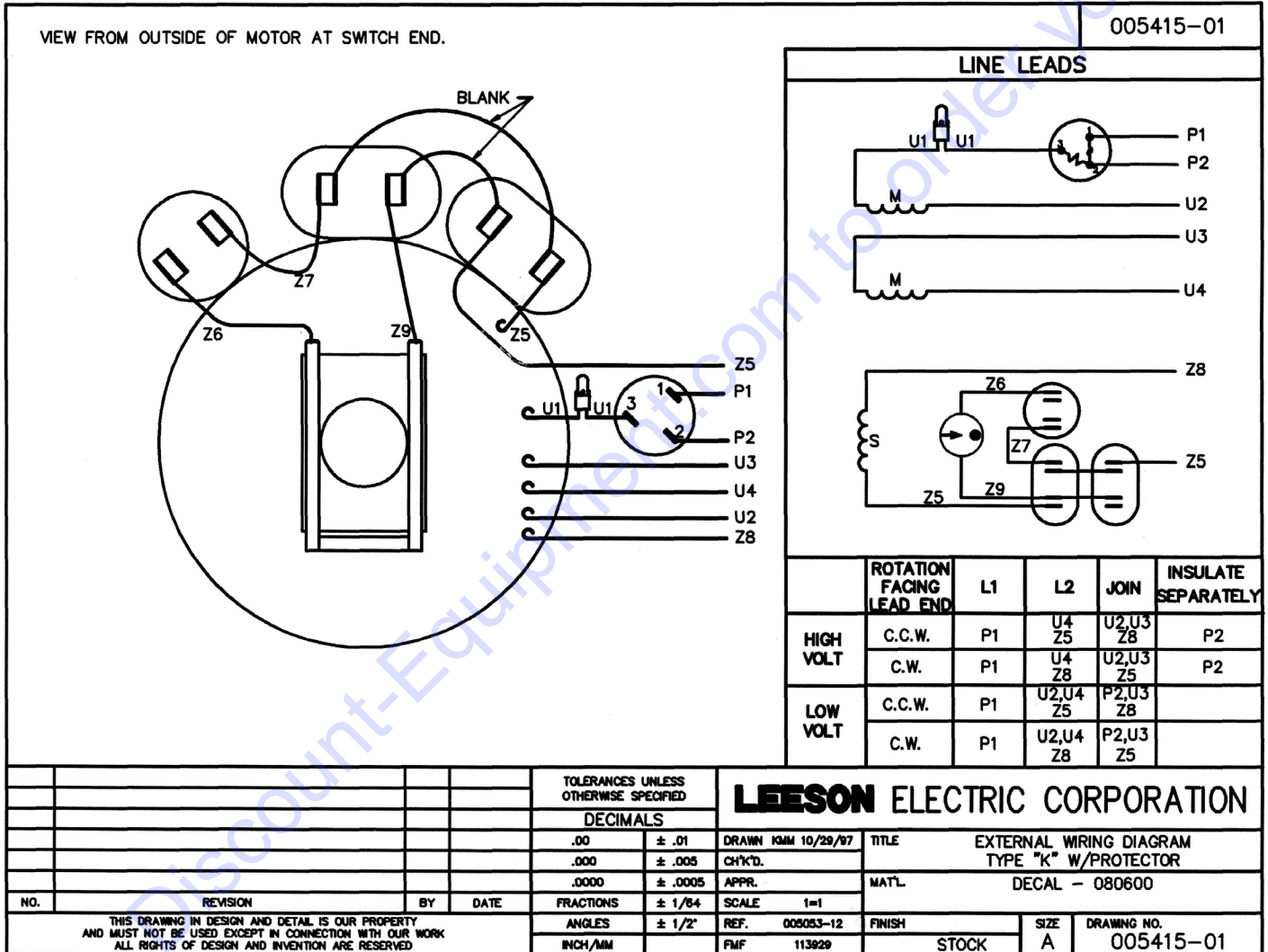
LEESON CAT. NO. 113938.00  
1.5 H.P., 1 PHASE, 60 HERTZ, 1725 RPM,  
115/230 VOLT, 17.2/8.6 FULL LOAD AMPS





**ILLUSTRATION 11:  
WIRING DIAGRAM FOR 50Hz MOTOR**

LEESON CAT. NO. 117051.00  
1.75 H.P., 1 PHASE, 50 HERTZ, 1500 RPM,  
110/220 VOLT, 18.8/9.4 FULL LOAD AMPS



# PARTS FINDER

**Search Website  
by Part Number**



**Search Manual  
Library For Parts  
Manual & Lookup Part  
Numbers – Purchase  
or Request Quote**

**Search Manuals**

Enter your information to help us find the right part for your machine.

\* Brand:

\* Model:

\* Serial:

\* Part Number:

SEARCH

**Can't Find Part or  
Manual? Request Help  
by Manufacturer,  
Model & Description**

**Parts Order Form**

Please fill in the following information to help us find the right part for your machine.

Manufacturer:	<input type="text"/>
Model:	<input type="text"/>
Description:	<input type="text"/>
Part Number:	<input type="text"/>
Quantity:	<input type="text"/>
Notes:	<input type="text"/>

Submit

Discount-Equipment.com is your online resource for quality parts & equipment.

Florida: **561-964-4949** Outside Florida TOLL FREE: **877-690-3101**

**Need parts?**

Click on this link: <http://www.discount-equipment.com/category/5443-parts/> and choose one of the options to help get the right parts and equipment you are looking for. Please have the machine model and serial number available in order to help us get you the correct parts. If you don't find the part on the website or on one of the online manuals, please fill out the request form and one of our experienced staff members will get back to you with a quote for the right part that your machine needs.

We sell worldwide for the brands: Genie, Terex, JLG, MultiQuip, Mikasa, Essick, Whiteman, Mayco, Toro Stone, Diamond Products, Generac Magnum, Airman, Haulotte, Barreto, Power Blanket, Nifty Lift, Atlas Copco, Chicago Pneumatic, Allmand, Miller Curber, Skyjack, Lull, Skytrak, Tsurumi, Husquvarna Target, Stow, Wacker, Sakai, Mi-T-M, Sullair, Basic, Dynapac, MBW, Weber, Bartell, Bennar Newman, Haulotte, Ditch Runner, Menegotti, Morrison, Contec, Buddy, Crown, Edco, Wyco, Bomag, Laymor, EZ Trench, Bil-Jax, F.S. Curtis, Gehl Pavers, Heli, Honda, ICS/PowerGrit, IHI, Partner, Imer, Clipper, MMD, Koshin, Rice, CH&E, General Equipment, Amida, Coleman, NAC, Gradall, Square Shooter, Kent, Stanley, Tamco, Toku, Hatz, Kohler, Robin, Wisconsin, Northrock, Oztec, Toker TK, Rol-Air, APT, Wylie, Ingersoll Rand / Doosan, Innovatech, Con X, Ammann, Mecalac, Makinex, Smith Surface Prep, Small Line, Wanco, Yanmar