



[www.Discount-Equipment.com](http://www.Discount-Equipment.com)

# Equipment Guide

Construction, power  
and lighting



## Compaction Equipment

Rammers .....	4
Plate Compactors .....	5-6
Rollers: Walk-Behind Single, Tandem Drum, Trench & Ride-On Tandem Drum .....	7-8

## Generators, Air Compressors and Welders

Generators: 2.5kW to 9.7kW .....	9
Generators: 6kW to 1,000kW .....	10-13
Air Compressors .....	13
Welders .....	14

## Trailers

Heavy-Duty Trailers .....	15
---------------------------	----

## Lighting Solutions

GloBug Balloon Lights, GloBug 4-Spot Light Towers & Powered Carts .....	16-18
--	-------

## Dewatering Equipment

Pumps: Submersible .....	19
Pumps: Centrifugal .....	20
Pumps: Trash and Diaphragm .....	21-23
Pumps: Accessories .....	24
Water Trailers .....	25

## Concrete-Masonry Technologies Equipment

Pumps: Concrete/Masonry .....	26
Mixers: Concrete/Towable .....	27
Mixers: Concrete, Mudtubs, Plaster/Mortar .....	28-30
Rebar Benders & Cutters .....	31
Power Buggies .....	32-33
Concrete Vibrators: MGX and Flex-Shaft .....	34
Concrete Vibrators: High-Cycle .....	35
Screeds: DuoScreed & Truss Screed .....	36-37
Trowels: Walk-Behind INSTACLUTCH™, Heavy-Duty & Standard ...	38-39
Trowels: Ride-On Mechanical and Hydraulic .....	39-40
Chemical Sprayers .....	41
Concrete Solutions .....	42-43
Concrete Solutions: Alpha Concrete & Mortar Dissolver .....	44
Masonry: Diamond Blades, Cup Wheels, Grinding Discs, Diamond Core Bits .....	45

<b>Ordering Information .....</b>	<b>51</b>
-----------------------------------	-----------



RELIABLE

## The standard in high-quality equipment solutions.

In business for four decades, Multi-quip is one of the largest, most diversified manufacturers and suppliers of world class quality products and solutions for the construction, industrial, telecom, government, non-commercial, aerospace, entertainment, and oil and gas exploration markets.

Multi-quip's comprehensive product portfolio encompasses light to medium construction equipment, power generators and lighting. Servicing customers worldwide, Multi-quip distributes its products in more than 70 countries through thousands of authorized distribution partners.



## MIKASA RAMMERS

### Features

- 4 cycle engines available from Honda
- Optional shoe sizes and extensions available
- Cyclone air filtration system on MTX series
- Cam-type clutch
- Grease- and oil-bath-lubricated models



### Technical specifications

MODEL	IMPACT FORCE LBS (KN)	BLOWS MIN MAX.	ENGINE MAKE MODEL	HP (KW) <sup>1</sup>	SHOE SIZE WIDTH IN (MM)	OPER. WEIGHT LBS (KG)
MTR40HF	1,215 (5.4)	695	HONDA GX100	2.8 (2.1)	5.9 (150)	101 (46)
MTX50HD	2,316 (10.3)	695	HONDA GX100	2.8 (2.1)	10.4 (265)	129 (59)
MTX60HD	3,064 (13.6)	695	HONDA GX100	2.8 (2.1)	10.4 (265)	141 (64)
MTX70HD	3,350 (14.9)	690	HONDA GX100	2.8 (2.1)	11.2 (285)	165 (75)
MTX70HDR	3,350 (14.9)	690	HONDA GXR120	3.5 (2.6)	11.2 (285)	165 (75)
MTX80HDR	3,505 (15.6)	678	HONDA GXR120	3.5 (2.6)	11.2 (285)	181 (82)

<sup>1</sup> See page 50 for details.

### MTX SERIES RAMMERS

#### 4 Cycle Engines

Honda offerings to meet operator expectations of reliability and easy starts.

**MTX-series rammers** feature an anti-vibration handle that significantly reduces operator fatigue.

**Throttle design** enables contractor to control engine speed and fuel delivery with a single lever.

**Combination tachometer and engine hour meter** provides engine RPM and helps track service intervals.



## MIKASA FORWARD PLATE COMPACTORS

### Features

- Hour/tachometer standard on MVC88 series
- Cyclonic pre-cleaner on select models
- Removable water tank on select models
- Low-vibration handles on selected models
- Cogged belt drive on MVC88 series
- Open base plate design



### Technical specifications

MODEL	CENTRIFUGAL FORCE LBS (KN)	EXCITER SPEED VPM	SPEED MIN FT (M)	ENGINE	HP (KW) <sup>1</sup>	PLATE WIDTH IN (MM)	OPER. WEIGHT LBS (KG)
MVC40H	1,619 (7.2)	6,200	82 (25)	HONDA GX100	2.8 (2.1)	11.7 (295)	110 (50)
MVC64VH*	2,275 (10.1)	5,600	82 (25)	HONDA GX120	3.5 (2.6)	13.8 (350)	151 (68)
MVC64VHW*	2,275 (10.1)	5,600	82 (25)	HONDA GX120	3.5 (2.6)	13.8 (350)	157 (71)
MVC82VH**†	3,080 (13.7)	5,600	72 (22)	HONDA GX160	4.8 (3.6)	17.7 (450)	175 (79)
MVC82VHW**†	3,080 (13.7)	5,600	72 (22)	HONDA GX160	4.8 (3.6)	17.7 (450)	181 (82)
MVC88VTH**†	3,372 (15)	6,000	82 (25)	HONDA GX160	4.8 (3.6)	19.7 (500)	207 (95)
MVC88VTHW**†	3,372 (15)	6,000	82 (25)	HONDA GX160	4.8 (3.6)	19.7 (500)	229 (104)
MVC90H	3,417 (15.2)	5,800	82 (25)	HONDA GX160	4.8 (3.6)	19.7 (500)	194 (88)

\* Wheel kit attachment optional.

† Urethane pad attachment optional.

<sup>1</sup> See page 50 for details.

## MIKASA PAVER PLATE COMPACTORS

### Features

- Hard rubber rollers protect pavers from scratching, chipping, breaking and dragging
- Great for narrow areas and compaction alongside walls
- Toolless foldable handle allows for quick and easy loading into vans and trucks
- Rollers allow for easy pull back to compact on the spot
- Greatly improves productivity compared to standard plate compactors



### Technical specifications

MODEL	PLATE SIZE WxL IN (MM)	RUBBER ROLLER DIAMETER IN (MM)	EXCITER SPEED VPM (HZ)	CENTRIFUGAL FORCE LBS (KN)	GASOLINE ENGINE	HP RATING BHP (KW) <sup>1</sup>	WEIGHT LBS (KG)
MVB85H	12.60 x 17.05 (320 x 433)	2.9 (73)	5,600 (93)	2,270 (10.1)	HONDA GX120	3.5 (2.6)	203 (92)
MVB150H	21.89 x 29.62 (556 x 752)	3.3 (86)	5,800 (97)	3,417 (15.2)	HONDA GX160	4.8 (3.6)	348 (158)

<sup>1</sup> See page 50 for details.

## MIKASA REVERSIBLE PLATE COMPACTORS

### Features

- High-horsepower gasoline and diesel engines
- Selected models include hour/tachometer
- Selected models include cyclone pre-cleaner
- Selected models include extension plates as standard
- Hydraulic forward and reverse
- Adjustable handle height
- Compas Technology-Optional Compaction Analyzing System on select models



### Technical specifications

MODEL	CENTRIFUGAL FORCE LBS (KN)	EXCITER SPEED VPM	SPEED MIN FT (MM)	ENGINE	HP (KW) <sup>1</sup>	PLATE WIDTH IN (MM)	OPER. WEIGHT LBS (KG)
MVH128GH***	5,058 (22.5)	6,000	85 (26)	HONDA GX160	4.8 (3.6)	15.8 (400)	264 (120)
MVH158GH***	6,070 (27)	5,400	89 (27)	HONDA GX200	5.5 (4.1)	16.9 (430)	309 (140)
MVH208GH	8,318 (37)	5,200	85 (26)	HONDA GX240	7.1 (5.3)	20 (510)	463 (210)
MVH308GH**	10,116 (45)	4,400	79 (24)	HONDA GX270	8.5 (6.3)	24 (600)*	717 (325)
MVH308DZ** † ^	10,116 (45)	4,400	79 (24)	HATZ 1B30	6.6 (4.9)	24 (600)*	794 (360)
MVH408GH**	12,365 (55)	4,400	82 (25)	HONDA GX390	11.7 (8.7)	26 (650)*	836 (379)
MVH408DZ** † ^	12,365 (55)	4,400	82 (25)	HATZ 1B50	9 (6.7)	26 (650)*	933 (423)
MVH508GH** † ^	13,489 (60)	4,400	82 (25)	HONDA GX390	11.7 (8.7)	26 (650)*	935 (425)
MVH508DZ** † ^	14,613 (65)	4,150	82 (25)	HATZ 1D81S	11.9 (8.9)	26 (650)*	1,182 (536)

\* Plate width includes 6" extensions.

\*\* 12" extensions optional.

\*\*\* Wheel kit attachment optional.

† Optional Compas Electric Start Models Only.

^ Electric start models do not include batteries.

<sup>1</sup> See page 50 for details.

### COMPAS TECHNOLOGY

#### Compas Advantage Removes Guesswork

An easy to read LED panel turns on to guide the operator as soil stiffness increases.

#### Compas Benefit Saves Time & Money

Continuous monitoring of soil stiffness guides operator to avoid unnecessary passes and over-compaction.



### Compas Model Guide

Electric Start Models Only	
Plate Model	Compas Model
MVH308DZ	CPAS308DZ
MVH408DZ	CPAS408DZ
MVH508GH	CPAS508GH
MVH508DZ	CPAS508DZ

## WALK-BEHIND SINGLE-DRUM ROLLERS

### Features

- Maintenance free vibratory assembly
- Elongated steering handle
- Plastic water tank
- Three water flow adjustment settings
- Hour/Tachometer
- 29" wide steel drum
- Adjustable transport hooks
- Hydrostatic drive system



### Technical specifications

MODEL	CENTRIFUGAL FORCE LBS (KN)	VPM	DRUM WIDTH IN (MM)	ENGINE	HP (KW) <sup>1</sup>	START METHOD	OPER. WEIGHT LBS (KG)
V305EH	3,800 (16.9)	4,200	29 (737)	HONDA GX340	10.7 (7.9)	ELECTRIC/ RECOIL	1,168 (530)

<sup>1</sup> See page 50 for details.

## MIKASA WALK-BEHIND ROLLERS

### Features

- Water tank and spray bars
- Gasoline and diesel engines
- Hydrostatic drive
- Narrow profile
- External vibrator
- Front bumper and work light



### Technical specifications

MODEL	CENTRIFUGAL FORCE LBS (KN)	VPM (HZ)	DRUM WIDTH IN (MM)	ENGINE	HP (KW) <sup>1</sup>	START METHOD	OPER. WEIGHT LBS (KG)
MRH800GS	5,300 (23.5)	3,300 (55.3)	25.6 (650)	HONDA GX390	11.7 (8.7)	ELECTRIC/ RECOIL	1,530 (694)
MRH601DS	2,428 (10.8)	3,300 (55.3)	25.6 (650)	KUBOTA EA330-E3	6.2 (4.6)	ELECTRIC/ RECOIL	1,248 (566)

Electric start models do not include battery.

<sup>1</sup> See page 50 for details.

## RAMMAX ARTICULATING TRENCH ROLLERS

### Features

- Articulating roller with flexible drum options for 24" and 33" working widths including removable drum rings
- Durable articulation joint requires no greasing
- Oscillating joint keeps drum rolls in contact with soil for optimum compaction
- Yanmar engine delivers reliable starting and performance
- Infrared remote charges using solar power and automatically synchronizes with the roller
- Front and rear covers provide easy access to all maintenance points



### Technical specifications

MODEL	ROLLER DRUM WIDTH IN (MM)	CENTRIFUGAL FORCE LBS (KN)	ENGINE	HP (KW) <sup>1</sup>	OPER. WEIGHT LBS (KG)	REMOVABLE DRUM RINGS
RX1575	24 (640)/ 33 (850)	16,860 (75) High 8,430 (37.5) Low	YANMAR 3TNV80/EPA 4F	20.4 (15)	3,087 (1,400)/ 3,197 (1,450)	OPTIONAL

<sup>1</sup> See page 50 for details.

## RIDE-ON TANDEM DRUM ROLLERS

### AR14H Features

- Compact design
- Articulated steering
- Maintenance free articulation joint and vibratory assembly
- Integrated hour/tachometer
- 12V power outlet and cup holder on cockpit
- Easy access to service points
- 35 gallon water tank



### Technical specifications

MODEL	CENTRIFUGAL FORCE LBS (KN)	VPM (HZ)	DRUM WIDTH IN (MM)	SPEED MPH (KPH)	ENGINE	HP (KW) <sup>1</sup>	OPER. WEIGHT LBS (KG)
AR14H	3,400 (15.1)	4,200 (70)	35.6 (904)	0-4.8 (0-7.7)	HONDA GX630	20.8 (15.5)	2,688 (1,219)

<sup>1</sup> See page 50 for details.



## MQ POWER PORTABLE GENERATORS

### Features

- Sizes ranging from 2,500 to 9,700 watts
- Two-year warranty
- Voltage regulation maintained within  $\pm 3\%$
- Brushless design minimizes maintenance
- Idle control on GA 36, GA 6, GA 97 and DA 7000SSA3 models
- Optional wheel kits available for GA 25, GA 97, DA 7000SSA3 models
- All receptacles GFCI protected (USA only)



### Technical specifications

MODEL	WATTS MAX/CONT	VOLTAGE	AMPERAGE MAX/CONT	ENGINE	HP (KW) <sup>1</sup>	STARTER TYPE	DRY WEIGHT LBS (KG)
GA25HR	2,500/2,200	120V	20.8/18.3@120V	HONDA GX160	4.8 (3.6)	RECOIL	110 (50)
GA36HR	3,600/3,200	120V/ 240V	30/26.6@120V 15/13.3@240V	HONDA GX240	7.9 (5.9)	RECOIL	174 (79)
GA6HR	6,000/5,000	120V/ 240V	50/41.6@120V 25/20.8@240V	HONDA GX340	10.7 (8.0)	RECOIL	200 (90)
GA6HRS*	6,000/5,000	120V/ 240V	50/41.6@120V 25/20.8@240V	HONDA GX340	10.7 (8.0)	ELECTRIC/ RECOIL	218 (99)
GA97HEA	9,700/8,400	120V/ 240V	80.8/70@120V 40.4/35@240V	HONDA GX630	20.8 (15.5)	ELECTRIC	342 (155)
DA7000SSA3	7,000/6,000	120V/ 240V	58.3/50@120V 29.2/25@240V	KUBOTA Z482	12.5 (9.3)	ELECTRIC	527 (239)

#### CANADIAN SPECIFICATIONS

GAC25HR <sup>†</sup>	2,500/2,200	120V	20.8/18.3@120V	HONDA GX160	4.8 (3.6)	RECOIL	112 (51)
GAC36HR <sup>†</sup>	3,600/3,200	120V/ 240V	30/26.6@120V 15/13.3@240V	HONDA GX240	7.9 (5.9)	RECOIL	176 (80)
GAC6HR <sup>†</sup>	6,000/5,000	120V/ 240V	50/41.6@120V 25/20.8@240V	HONDA GX340	10.7 (8.0)	RECOIL	198 (90)
GAC6HRS* <sup>†</sup>	6,000/5,000	120V/ 240V	50/41.6@120V 25/20.8@240V	HONDA GX340	10.7 (8.0)	ELECTRIC/ RECOIL	220 (100)
GAC97HEA <sup>†</sup>	9,700/8,400	120V/ 240V	80.8/70@120V 40.4/35@240V	HONDA GX610	16.6 (12.4)	ELECTRIC	341 (155)
DAC7000SSA3 <sup>†</sup>	7,000/6,000	120V/ 240V	58.3/50@120V 29.2/25@240V	KUBOTA Z482	12.5 (9.3)	ELECTRIC	529 (240)

\* Optional battery available.

<sup>1</sup> See page 50 for details.

<sup>†</sup> Canada only.

See page 35 for high-cycle generators  
for FXA vibrators

## MQ POWER WHISPERWATT

### Features

- Ideal for portable, standby and special events
- Highway-legal trailers and auxiliary fuel tanks available
- Patented Open-Delta generator offers "best in class" motor starting
- Excellent voltage and frequency regulation
- Designed for low-noise operation - surpasses OSHA standards
- Full engine and generator instrumentation
- Equipped with Tier 4 engines



Optional trailer

### Technical specifications 7-36 kVA—Single Phase

MODEL	STANDBY OUTPUT KW (KVA)	PRIME OUTPUT KW (KVA)	AMPS 1-PHASE 120V	AMPS 1-PHASE 240V	AMPS 3-PHASE 240V	AMPS 3-PHASE 480V	WET WEIGHT LBS (KG)	TRAILER
DCA 6SPX4F	—	6 (6)	25 (2 SETS)	25	—	—	836 (379)	TRLRMP(XF)
DA 7000SSA3	7 (7)	6 (6)	25 (2 SETS)	25	—	—	582 (264)	TRLRMP(XF)
DCA 10SPXU4C	11 (11)	10 (10)	41.7 (2 SETS)	41.7A	—	—	1,250 (567)	TRLRMP(XF)
DCA 15SPXU4F	14 (14)	14.7 (14.7)	58.3A (2 SETS)	58.3A	—	—	1,397 (620)	TRLR25US2
DCA 20SPXU4F	22 (22)	20 (20)	83A (2 SETS)	83A	—	—	2,138 (970)	TRLR25US2
DCA 36SPXU4F	40 (40)	36 (36)	150A (2 SETS)	150A	—	—	3,087 (1,400)	TRLR45

### Technical specifications 7-600 kVA—Single/Three Phase

MODEL	STANDBY OUTPUT KW (KVA)	PRIME OUTPUT KW (KVA)	AMPS 1-PHASE 120V	AMPS 1-PHASE 240V	AMPS 3-PHASE 240V	AMPS 3-PHASE 480V	WET WEIGHT LBS (KG)	TRAILER
TLG 8SSK4F2	6.4 (8)	6 (7.5)	—	—	18A	—	646 (293)	TRLRMP(XF)
DCA 25SSIU4F	22 (27.5)	20 (25)	60A x 2 (ZIGZAG)	60A (ZIGZAG)	60A	30A	2,138 (970)	TRLR25US2
DCA 40SSKU4F2	29.7 (37)	28.8 (36)	108A x 2 (ZIGZAG)	108A (ZIGZAG)	86A	43A	2,823 (1,280)	TRLR45
DCA 45SSIU4F	40 (50)	36 (45)	108A x 2 (ZIGZAG)	108A (ZIGZAG)	108A	54A	2,976 (1,350)	TRLR45
DCA 70SSIU4F	62 (77)	56 (70)	168A x 2 (ZIGZAG)	168A (ZIGZAG)	168A	84A	4,211 (1,910)	TRLR70US
DCA 70SSJU4F	62 (77)	56 (70)	168A x 2 (ZIGZAG)	168A (ZIGZAG)	168A	84A	4,211 (1,910)	TRLR75XF2
DCA 125SSIU4F	110 (137.5)	100 (125)	300A x 2 (ZIGZAG)	300A (ZIGZAG)	300A	150A	6,702 (3,040)	TRLR125US
DCA 150SSJU4F3	132 (165)	120 (150)	361A x 2 (ZIGZAG)	361A (ZIGZAG)	361A	180A	10,869 (4,930)	TRLR180EV
DCA 180SSJU4F3	158 (198)	144 (180)	400 (4-WIRE)	200 (4-WIRE)	433A	216A	11,266 (5,110)	TRLR180EV
DCA 220SSJU4F3	194 (242)	176 (220)	489A (4-WIRE)	244.4A (4-WIRE)	529A	264.5A	8,489 (3,850)	TRLR220EV
DCA 300SSJU4F3	264 (330)	240 (300)	666.7A (4-WIRE)	333.3A (4-WIRE)	722A	360A	15,010 (6,810)	TRLR300EV
DCA 400SSI4F3	336 (420)	320 (400)	888.9A (4-WIRE)	444.4A (4-WIRE)	962.3A	481.1A	13,184 (5,980)	TRLR 400XF3DAE
DCA 600SSV4F3	528 (660)	480 (600)	1333.3A (4-WIRE)	666.7A (4-WIRE)	1443.4A	721.7A	19,114 (8,670)	TRLR 600XFBP3E



## DEF REPLENISHMENT SYSTEM

### Features

- High capacity tank holds up to 100 gallons (379 l) of DEF
- Compact design simplifies transport and placement on site
- CAN bus DEF level monitoring for any Tier 4 Final diesel engine
- Application Flexibility – automatically maintains DEF level on one or two engines simultaneously, unattended\*
- Extends engine runtime and reduces the frequency of costly refilling
- Automatically purges supply lines to ensure that DEF quality is maintained after each replenishment cycle

### Technical specifications

MODEL	NUMBER OF GENERATORS	AMPERAGE REQ'S	EXTERNAL HOSE LENGTH	COMM CABLE	WET WEIGHT LBS (KG)
DEFTANK1*	1	5A	25 FT	25 FT	1,903 (863)
DEFTANK2*	2	5A x2	25 FT x2	25 FT x2	1,903 (863)

\* Diesel exhaust fluid; complies with ISO-22241

## MQ POWER CONTAINER GENERATORS

### Features

- Specially-designed container
- 4" full containment
- Ideal for portable and standby
- Volvo Tier-4 heavy-duty diesel engine
- Basler DGC2020HD digital genset control



Optional trailer

### Technical specifications

MODEL	STANDBY OUTPUT KW (KVA)	PRIME OUTPUT KW (KVA)	AMPS 3-PHASE 208V STANDBY/PRIME	AMPS 3-PHASE 480V STANDBY/PRIME	FUEL TANK/DEF CAPACITY GAL
CG 500V4F	550 (687)	500 (625)	1908A	827A	1,000/84
CG 500DUAL	1,000 (1,250)	900 (1,125)	1908A x 2	827A x 2	1,000/168

## MQ POWER STUDIO GENERATORS

### Features

- Heavy-duty diesel engine – EPA Tier 4 Final
- Sound-attenuated aluminum housing
- 6 set - Camlok receptacles mounted on waterfall panel
- Instrument panel with LED gauges (Volts, Amps & Hz)
- ComAp Digital Controller and color display



### Technical specifications

MODEL	PRIME OUTPUT KW	AMPS 3-PHASE 120/208 PRIME	ENGINE	HP (KW)	APPROX.NET WEIGHT LBS (KG)
SG 1400C4F	168	1,400	CUMMINS QSB7-G9	282 (210)	5,490 (2,490)
SG 1600C4F	192	1,600	CUMMINS QSB7-G9	282 (210)	5,490 (2,490)

Optional trailer with 145 gal (548L) fuel tank.

## MQ POWER NATURAL GAS

### Features

- Ideal for oil and gas fields
- Basler DGC2020 microprocessor
- Quiet operation – both models benefit from a sound attenuated, weather resistant housing reduced noise to 69 db @ 23' (Full Load)
- EPA Emission certified
- Containment for all engine fluids



### Technical specifications

MODEL	STANDBY OUTPUT KW (KVA)	PRIME OUTPUT KW (KVA)	AMPS 1-PHASE 120V	AMPS 1-PHASE 240V	AMPS 3-PHASE 240V	AMPS 3-PHASE 480V	WET WEIGHT LBS (KG)	TRAILER
NGA 100	88 (110)	80 (100)	222.2A (4-WIRE)	111.1A (4-WIRE)	240A	120A	4,752 (2,155)	TRLR100
NGA 150	132 (165)	120 (150)	333.3A (4-WIRE)	166.7A (4-WIRE)	361A	180A	7,341 (3,330)	TRLR150



## MQ POWER AIR COMPRESSOR

### Features

- Models available in 95 & 185 CFM
- Quiet operation - sound attenuated, weather resistant housing reduced noise to as low as 69 db @ 23' (Full Load)
- Easy access to engine and air compressor through large lockable gull wing side doors
- Easy maintenance with external drains

### Technical specifications

MODEL	CFM	MAX PRESSURE	ENGINE	HP (KW)	FUEL CAPACITY GAL (L)	LxWxH (IN)	WET WEIGHT LBS (KG)
DIS100SSK4F	95	120	KUBOTA D1005-E4B	23.2 (17.3)	10.6 (40)	112x58.1 x55.1	1,631 (740)
DIS 185SSI4F	185	105	ISUZU 4LE2T	48.3 (36)	22 (83)	128.5x65.6 x60.1	2,337 (1,060)

## MQ POWER ENGINE POWERED WELDERS

### Features

- The industry's most versatile line of welder / generators
- Simultaneous use of DC Welding and AC power output on selected models
- CC/CV welding output on 225 Amp and larger models
- Dual welding capability on DLW330X2 and DLW400ESA4 for maximum productivity
- Smart stick functions on DLW330X2 and DLW400ESA4. Automatically starts/stops engine for optimal fuel conservation.
- Selected models feature E-mode to reduce fuel consumption and noise levels
- Optional remote available on selected models (225-500)
- AC receptacles GFCI protected



Optional trailer

### Technical specifications

MODEL	DC CURRENT	DC VOLTAGE	DUTY CYCLE	CURRENT RANGE	POWER OUTPUT; AMPS	ENGINE	WEIGHT LBS (KG)	LxWxH IN (CM)	TRAILER/WHEEL KIT
GASOLINE									
GAW135H**	135A	25.2V	40%@135A 100%@80A	40-135A	1.5KW; 12.5	HONDA GX200	114 (52)	22x19x21 (55x48x53)	UWKB
GAW180HEA***	180A	26.8V	50%@180A 100%@110A	50-180A	3KW; 25	HONDA GX340	236 (107)	28x26x22 (70x65x56)	UWKB
DIESEL									
SDW225SSA1*	225A	15-28 28CC	100%@200A	50-225A	6KW; 50/25	KUBOTA Z482	675 (306)	45x26x32 (114x66x81)	TRLRMP(XF), WKT225A
DLW300ESA1*	300A	31CC	100%@280A	30-300A	9.6KW; 80/40	KUBOTA D722	849 (385)	51x27x33 (130x69x84)	TRLRMP(XF)
DLW330X2*	340A Single 200A Duel	31 2x26.6CC	100%@280A 2x165	30-340A 30-200A	9.6KW; 80/40	KUBOTA D902	893 (405)	51x27x33 (130x69x84)	TRLRMP(XF)
DLW400ESA4*	400A Single 200A Duel	34 2x27CC	100%@350A 2x175	30-400A 2x30-200A	12KW; 100/50	KUBOTA D902	1,028 (466)	61x29x35 (154x72x89)	TRLRMP(XF)
DAW500SA4*	500A	16-40CV 38CC	100%@350A	50-500A	2.4KW; 20	KUBOTA D1803	1,175 (533)	53x32x45 (133x80x113)	TRLRMP(XF)

\* TIER 4f

\*\* Not currently available for sale or use in Canada.

† Optional battery available.

## MQ POWER HEAVY-DUTY TRAILERS

### Features

- Heavy-duty welded steel frame construction
- Powder coat paint process including frame, channel, actuator and fenders (excluding TRLR600XFBP3E)
- D.O.T. approved tail lamps, stop lamps, turn signal lamps and side marker lamps
- Surge hydraulic or electric-actuated drum brakes (all axles) on select models



### Technical specifications

MODEL	GROSS VEHICLE WEIGHT RATING LBS	GROSS AXLE WEIGHT RATING LBS	TIRE SIZE	TIRE LOAD RATING LBS	LXWXH (IN)	FUEL TANK CAPACITY GAL	WEIGHT DRY (WET) LBS
TRLRMP	2,000	2,000 EA	ST175/80D 13 LR-C	1,360 EA	98.6x55.5x22	—	383 (-)
TRLRMPXF	2,000	2,000 EA	ST175/80D 13 LR-C	1,360 EA	98.6x55.5x22	28	513 (713)
TRLR25US2	2,720	3,500 EA	ST175/80D 13 LR-C	1,360 EA	105.7x56x21	—	406 (-)
TRLR45	7,000	3,500 EA	ST205/75D 14 LR-C	1,760 EA	148x65.25x27	—	1056 (-)
TRLR70US	7,000	3,500 EA	ST205/75D 15 LR-C	1,820 EA	164.4x72.5x23.5	—	980 (-)
TRLR75XF2	7,000	3,500 EA	ST205/75D 15 LR-C	1,820 EA	142.5x69.5x28.5	100	1,366 (2077)
TRLR85XF2	7,000	3,500 EA	ST225/75D 15 LR-D	2,540 EA	180.86 x 72.25 x 29.45	180	1,740 (2,990)
TRLR125XF2	9,000	4,500 EA	ST225/75D 15 LR-D	2,540 EA	180.86 x 72.25 x 29.45	180	1,998 (3,278)
TRLR125US	10,000	5,000 EA	ST225/75D 15 LR-D	2,540 EA	181x79.5x24.7	—	1,719 (-)
TRLR180EV	14,000	7,000 EA	ST235/80R 16 LR-G	3,520 EA	212.9x89x26.58	—	2,404 (WET) (-)
TRLR220EV	16,000	8,000 EA	ST235/85R 16 LR-G	4,400 EA	212.9x89x26.58	—	2,404 (WET) (-)
TRLR300EV	10,000	10,000 EA	ST235/75R 17.5 LR-J	6,005 EA	223.15x99.5x32.95	—	3,076 (WET) (-)
TRLR 400XF3DAE	21,000	7,000 EA	ST235/ 80R16 LR-E	3,500 EA	264x94x27.4	350	4,280 (1,943)
TRLR 600XFBP3E	34,000	12,000 EA	ST235/75R 17.5 LR-H	6,005 EA	324x102x35.4	600	25,638 (WET) (29,904)

## GLOBUG BALLOON LIGHTS

### Features

- Operates on 120V AC Power
- 360° illumination
- Glare-free lighting
- Internal electric ballast
- Weather resistant balloon material
- Metal Halide and LED lamp options
- Easy set-up and transportation
- Industrially designed stand and cart options



Optional generator

### Technical specifications

MODEL	TYPE	LAMP	WEIGHT LBS (KG)
GBC	CART*	1KW METAL HALIDE	126 (57)
GBW	WITH PENTAPOD STAND	1KW METAL HALIDE	56 (26)
GBS	EQUIP. MOUNT	1KW METAL HALIDE	34 (16)
GBP	LAMP ONLY**	1KW METAL HALIDE	22 (10)
GB12BW	WITH TRIPOD STAND	400W METAL HALIDE	30 (14)
GB12BS	EQUIP. MOUNT	400W METAL HALIDE	30 (14)
GB12BP	LAMP ONLY**	400W METAL HALIDE	13 (6)
GB3LED	LED LAMP W/TRIPOD	300W LED	27 (59)
GB3LEDB	LED LAMP ONLY**	300W LED	18 (40)
GB3LEDC	CART*	300W LED	82 (37)
GB8LED	LED LAMP W/ PENTAPOD	800W LED	48 (22)
GB8LEDB	LED LAMP ONLY**	800W LED	25 (11)
GBC8LED	CART*	800W LED	126 (57)
GB2000	LIGHT TOWERS***	2KW METAL HALIDE	31 (68)
GB4000	LIGHT TOWERS***	4KW METAL HALIDE	40 (88)

\* Generator not included with cart models.

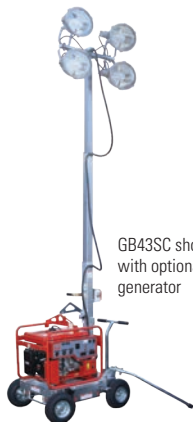
\*\* LAMP ASM. ONLY - indicates a complete balloon lamp assembly (less mast, stand or cart).

\*\*\* Designed to attach to selected trailer mounted mobile light towers.

## GLOBUG 4-SPOT LIGHT TOWERS

### Features

- Ultimate compact cart design
- Metal Halide (MH) and LED lamp models
- 3-Stage mast (MH) and 4-stage mast LED
- Operates from 120V house or generator power
- MH mast raises to 13.7' - LED mast to 17.1'



GB43SC shown with optional generator

### Technical specifications

MODEL	VOLTAGE	AMPS	BULB WATTAGE	LUMENS	BULB TYPE	WEIGHT LBS (KG)
GB43SC	120V	18.6	4 x 400W	142,000	METAL HALIDE	364 (165)
GB43LED	120V	11	4 x 300W	152,000	LED	316 (165)



## GLOBUG POWERED CARTS

### Features

- 1.6KW Inverter Generator
- Powerful 4 cycle, 3.5 HP (2.6kW) gasoline engine EPA/CARB Certified
- 3 Gallon fuel tank – over 18 HRS run time
- ECO mode for fuel conservation & noise abatement - 63 dB(A)
- 120V 13.3A external DUPLEX receptacle
- Lamps made of rugged aluminum/poly-carbonate materials
- Rugged, anodized steel cart with mechanical brake, and adjustable handle
- (3) piece anodized aluminum air-assist mast
- Overall compact design: 32" X 22" footprint



GBX4S

GBX8B

### Technical specifications

MODEL	VOLTAGE	AMPS	BULB WATTAGE	LUMENS	BULB TYPE	WEIGHT LBS (KG)
GBX4S	120V	13.3	2 x 200	56,000	LED	363 (165)
GBX8B	120V	13.3	800	110,000	LED	383 (174)

## GLOBUG LIGHT TOWERS

### GBX12SK Features

- Trusted Kubota liquid-cooled diesel engine – EPA/CARB compliant
- High efficiency LED lamps produce bright, clear 168,000 lumen projection lighting
- LED longevity and safety – lamps provide 40,000 hours of operational life and allow for immediate strike/re-strike lamp capability
- Aerospace mast design – anodized aluminum 5-section vertical telescopic mast assembly provides superior strength and corrosion resistance
- Industrial trailer assembly – rugged, compact design meets all DOT/NHSTA trailer and cabinet requirements



### GBX24BK Features

- Trusted Kubota liquid-cooled diesel engine – EPA/CARB compliant
- High efficiency LED lamps produce bright, clear 399,000 lumen diffused lighting
- LED longevity and safety – lamps provide 40,000 hours of operational life and allow for immediate strike/re-strike lamp capability
- Aerospace mast design – anodized aluminum 5-section vertical telescopic mast assembly provides superior strength and corrosion resistance
- Industrial trailer assembly – rugged, compact design meets all DOT/NHSTA trailer and cabinet requirements



### Technical specifications

MODEL	ENGINE	LAMP TYPE	LAMP STYLE	LUMENS	LAMP LIFE	WEIGHT LBS (KG)
GBX12SK	DIESEL	LED	4-SPOT	168,000	40,000 HRS	1,288 (515)
GBX24BK	DIESEL	LED	BALLOON	399,000	40,000 HRS	1,278 (511)

## SUBMERSIBLE CLEAN WATER PUMPS

### Features

- 1.25" to 6" diameter discharge
- Selected models UL and CUL listed
- Compact and streamlined design with thermal overload protection
- Single-phase and three-phase motors available
- Double oil-filled seal provides positive lubrication (selected models)



### Technical specifications

MODEL	DISCHARGE IN (MM)	GPM (LPM)	TOTAL HEAD FT (M)	VOLTAGE PHASE	HP (KW) <sup>1</sup>	DIAMETER IN (MM)	WEIGHT LBS (KG)
YELLSUB	1.25 (38)	33 (125)	15 (4.6)	115 1Ø	0.25 (0.185)	5.3 (136)	6(2.72)
SS233	2 (50)	60 (227)	20 (6.1)	115 1Ø	0.5 (0.37)	8.1 (206)	15.5(7)
ST2038P	2 (50)	60 (227)	38 (11.5)	115 1Ø	1.0 (0.75)	7.7 (196)	31(14)
ST2037	2 (50)	73 (276)	37 (11.3)	115 1Ø	1.0 (0.75)	7.4 (188)	31(14)
ST2037F #	2 (50)	73 (276)	37 (11.3)	115 1Ø	1.0 (0.75)	7.4 (188)	31(14)
ST2047	2 (50)	87 (329)	47 (14.3)	115 1Ø	1.0 (0.74)	7.4 (188)	33(15)
ST3020BCUL	3 (75)	170 (644)	72 (22)	230 1Ø	2.0 (1.5)	6.7 (170)	67(30)
ST3050D*†	3 (75)	264 (999)	86 (26)	230/460 3Ø	5.0 (3.7)	10.2 (259)	120(54)
ST41230*†	4 (101)	423 (1,601)	138 (42)	230 3Ø	10 (7.4)	12.5 (318)	205(93)
ST41460*†	4 (101)	423 (1,601)	138 (42)	460 3Ø	10 (7.4)	12.5 (318)	205(93)
ST61230*†	6 (152)	674 (2,423)	105 (32)	230 3Ø	15 (11.1)	14 (356)	301(136)
ST61460*†	6 (152)	674 (2,423)	105 (32)	460 3Ø	15 (11.1)	14 (356)	301(136)

\* Three-phase—specify voltage when ordering  
Models ST3050D, ST41230, ST41460, ST61230, ST1460 require a Control Box when ordering.

<sup>1</sup> See page 50 for details.

† Not currently available for sale or use in Canada.

## SUBMERSIBLE TRASH PUMPS

### Features

- Compact design with thermal-overload protection
- Handles solids up to 1" in diameter
- PX400 designed with plastic/stainless steel housing



### Technical specifications

MODEL	DISCHARGE IN (MM)	GPM (LPM)	MAX HEAD FT (M)	VOLTAGE PHASE	HP (KW) <sup>1</sup>	DIAMETER IN (MM)	WEIGHT LBS (KG)
PX400 <sup>1</sup>	2 (51)	72 (273)	34 (10.3)	115 1Ø	0.5 (0.37)	10 (254)	25 (11)
ST2040T	2 (51)	79 (299)	40 (12.2)	115 1Ø	1.0 (0.75)	10.3 (267)	34 (15.4)
ST2040TF #	2 (51)	79 (299)	40 (12.2)	115 1Ø	1.0 (0.75)	10.3 (267)	34 (15.4)
ST2010TCUL	2 (51)	95 (360)	45 (13.7)	115 1Ø	1.0 (0.75)	10.3 (267)	77 (35)

# with integrated Float Switch.

<sup>1</sup> See page 50 for details.

## CENTRIFUGAL PUMPS

### Features

- Dewatering pumps for a variety of clear water applications
- Industrial die cast aluminum pump-end design
- Compact, portable
- Dependable Honda gasoline engines
- Adjustable discharge port
- Sturdy wrap-around frame



### Technical specifications

MODEL	SUCTION X DISCHARGE IN (MM)	GPM (LPM)	MAX HEAD FT(M)	ENGINE	HP (KW) <sup>1</sup>	WEIGHT LBS (KG)
QP2H	2x2 (51x51)	158 (600)	115 (35)	HONDA	3.5 (2.6)	53 (24)
QP303H	3x3 (76x76)	245 (931)	98 (30)	HONDA	4.8 (3.6)	77 (35)
QP402H	4x4 (101x101)	425 (1,615)	100 (30)	HONDA	7.9 (5.9)	145 (65)

<sup>1</sup> See page 50 for details.

## HIGH-PRESSURE CENTRIFUGAL PUMPS

### Features

- Honda-powered with low-oil alert
- High head producing
- High pressure producing
- Unique 3 discharge port manifold
- Excellent for fire emergencies, portable irrigation and equipment cleaning



### Technical specifications

MODEL	SUCTION X DISCHARGE IN (MM)	GPM (LPM)	MAX HEAD FT (M)	MAX PSI	ENGINE	HP (KW) <sup>1</sup>	WEIGHT LBS (KG)
QP15HP	2x2 (51x51)	56 (212)	197 (60)	86	HONDA	2.1 (2.8)	22 (10)
QP205SH	2x1.5/1/1 (51x38/25/25)	106 (401)	230 (70)	100	HONDA	4.8 (6.4)	64 (29)
QPT205SLT	2x1.5/1/1 (51x38/25/25)	126 (479)	312 (95)	135	HONDA	7.9 (5.9)	99 (45)
QPT305SLT	3x1.5/1/1 (76x38/25/25)	145 (550)	328 (100)	142	HONDA	10.7 (8.0)	110 (50)
QPT405SLT	4x3/3/4 (101/76/76/101)	210 (795)	377 (115)	163	HONDA	10.7 (8.0)	305 (137)

<sup>1</sup> See page 50 for details.

## TRASH PUMPS

### Features

- Rugged die-cast pump casings
- 2", 3" & 4" suction/discharge
- Ductile iron impellers
- Silicon/carbide mechanical seals
- Easy access clean-out covers
- 1" protective roll frame
- Gasoline & diesel engine models
- Handles solids up to 2" diameter
- Optional wheel kits available



### Technical specifications

MODEL	SUCTION & DISCHARGE IN (MM)	GPM (LPM)	MAX HEAD FT (M)	MAX SOLIDS IN (MM)	ENGINE	HP (KW) <sup>1</sup>	WEIGHT LBS (KG)
-------	-----------------------------	-----------	-----------------	--------------------	--------	----------------------	-----------------

#### GASOLINE ENGINES

QP2TH	2x2 (51x51)	211 (800)	98 (30)	1.0 (25.4)	HONDA	4.8 (3.6)	96 (43.5)
QP3TH	3x3 (76x76)	396 (1,500)	95 (29)	1.5 (38.1)	HONDA	7.9 (5.9)	142 (64)
QP4TH	4x4 (100x100)	555 (2,100)	92 (28)	2.0 (50.8)	HONDA	10.7 (8.0)	216 (98)

#### DIESEL ENGINES - PIPE FRAME MODELS

QP2TK	2x2 (51x51)	172 (650)	85 (26)	1.0 (25)	KUBOTA	6.0 (4.5)	157 (71)
QP3TK	3x3 (76x76)	325 (1,229)	85 (26)	1.5 (38)	KUBOTA	6.0 (4.5)	176 (80)
QP4TK	4x4 (102x102)	475 (1,798)	85 (26)	2.0 (51)	KUBOTA	9.5 (7.0)	286 (130)

MODEL	FUEL CAPACITY GPM (LPM)	GPM (LPM)	MAX HEAD FT (M)	MAX SOLIDS IN (MM)	ENGINE	HP (KW) <sup>1</sup>	WEIGHT LBS (KG)
-------	-------------------------	-----------	-----------------	--------------------	--------	----------------------	-----------------

#### DIESEL ENGINES - TRAILER MOUNTED MODELS

QP4TKT10	1.45 (5.5)	475 (1798)	85 (26)	2.0 (51)	KUBOTA	9.5 (7.0)	615 (277)
QP4TKT16	16.0 (60.6)	475 (1798)	85 (26)	2.0 (51)	KUBOTA	9.5 (7.0)	665 (302)
QP4TKT28	28.0 (106)	475 (1798)	85 (26)	2.0 (51)	KUBOTA	9.5 (7.0)	735 (333)

<sup>1</sup> See page 50 for details.

## TRASH PUMP - QP3Ti

### Features

- AUTO unattended operations
- Float Switch Operations
- Electric Start - AUTO Choke
- Controlled Discharge Rates
- Wheel Kit included
- Float Switches included



### Technical specifications

MODEL	SUCTION & DISCHARGE IN (MM)	GPM (LPM)	MAX HEAD FT (M)	MAX SOLIDS IN (MM)	ENGINE	HP (KW) <sup>1</sup>	WEIGHT LBS (KG)
QP3Ti	3x3 (76x76)	396 (1,500)	95 (29)	1.5 (38.1)	HONDA	7.9 (5.9)	142 (64)

<sup>1</sup> See page 50 for details.

## TRASH PUMP - QP3TS

### Features

- Unique sound suppression design
- 63 db(A)
- Convenient electric start engine
- Wheel Kit included
- 4.5 hour run time



### Technical specifications

MODEL	SUCTION & DISCHARGE IN (MM)	GPM (LPM)	MAX HEAD FT (M)	MAX SOLIDS IN (MM)	ENGINE	HP (KW) <sup>1</sup>	WEIGHT LBS (KG)
QP3TS	3x3 (76x76)	396 (1499)	95 (29)	1.5 (38)	HONDA	8.5 (6.3)	287 (130)

<sup>1</sup> See page 50 for details.

## TRASH PUMP - QP3THX

### Features

- Sound suppression manifold
- 71 db(A)
- Extended Fuel Tank
- 7.2 hour run time
- Trusted MQ 3" Trash pump-end



### Technical specifications

MODEL	SUCTION & DISCHARGE IN (MM)	GPM (LPM)	MAX HEAD FT (M)	MAX SOLIDS IN (MM)	ENGINE	HP (KW) <sup>1</sup>	WEIGHT LBS (KG)
QP3THX	3x3 (76x76)	396 (1,500)	95 (29)	1.5 (38.1)	HONDA	7.9 (5.9)	142 (64)

<sup>1</sup> See page 50 for details.

## TRASH PUMPS – 6" Skid & Trailer Mount

### Features

- Powerful wet priming system
- 6" suction/discharge
- Passes 3" solids
- Ductile iron impellers
- Multi-position discharge
- LED control boxes
- Strong No. 30 grey iron pump housing
- Silicon/carbide mechanical seal
- Multiple DOT approved trailer packages
- Battery included with all 6" pumps



### Technical specifications

MODEL	FUEL CAPACITY GPM (LPM)	GPM (LPM)	MAX HEAD FT (M)	MAX SOLIDS IN (MM)	ENGINE	HP (KW) <sup>1</sup>	WEIGHT LBS (KG)
DIESEL ENGINES - MQ62 SERIES - SKID MOUNTED MODEL							
MQ62TKS	16 (61)	1,190 (4505)	111 (34)	3.0 (7.6)	KOHLER	24.3 (18)	1,560 (702)
DIESEL ENGINES - MQ62 SERIES - TRAILER MOUNTED MODEL							
MQ62TKT	28 (106)	1,190 (4505)	111 (34)	3.0 (7.6)	KOHLER	24.3 (18)	1,700 (771)
DIESEL ENGINES - MQ600 SERIES - SKID MOUNTED MODEL							
MQ600H	40 (151)	1,600 (6057)	150 (46)	3.0 (7.6)	HATZ	68.4 (50)	2,200 (998)
DIESEL ENGINES - MQ600 SERIES - TRAILER MOUNTED MODEL							
MQ600HTB	40 (151)	1,600 (6057)	150 (46)	3.0 (7.6)	HATZ	68.4 (50)	2,850 (1293)
MQ600HTP	40 (151)	1,600 (6057)	150 (46)	3.0 (7.6)	HATZ	68.4 (50)	2,850 (1293)

<sup>1</sup> See page 50 for details.

## DIAPHRAGM PUMPS

### Features

- Ideal for slow seepage, sludge and heavy debris laden fluid applications
- Quick, easy priming
- Wheel Kit included



### Technical specifications

MODEL	SUCTION x DISCHARGE IN (MM)	GPM (LPM)	ENGINE	HP (KW) <sup>1</sup>	WEIGHT LBS (KG)
MQD2HA	2x2 (51x51)	50 (189)	HONDA	3.5 (2.6)	125 (57)
MQD3HA	3x3 (76x76)	90 (342)	HONDA	3.5 (2.6)	175 (79)

<sup>1</sup> See page 50 for details.

## PUMP ACCESSORIES

### Features

- Full line of suction hoses
- Full line of discharge hoses
- Float switches
- Control boxes for submersible pumps
- Wheel kits for pipe frame pumps
- DOT approved industrial trailers for trash pumps

### PUMP HOSES



**Multiquip offers a complete line of Suction and Discharge Hoses**, in sizes from 1-1/2" to 8" with standard thread or quick-disconnect couplings.

### FLOAT SWITCHES FOR SUB PUMPS



**Multiquip offers industrial Float Switches**, to support dewatering operations. Single and Dual Float Switches available.

### CONTROL BOXES FOR SUB PUMPS



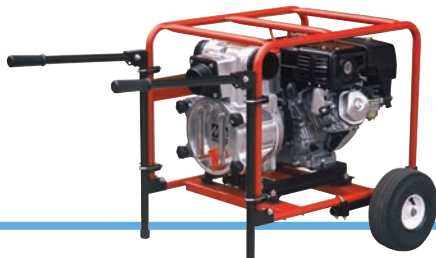
**Multiquip offers rugged Control Boxes**, for sub pump operations and electrical protection. Pumps requiring Control Boxes: ST3050D, ST41230, ST41460, ST61230 and ST61460.

### TRASH PUMP WHEEL KITS and TRAILERS

**Optional wheel kits are available for almost every Multiquip trash pump.**

Easily installed, they simplify mobility on the job site.

**Industrial towable trailers with fuel cells** are available for QP4TZ, MQ62TDD and MQ600TD80 models.





## WATER TRAILERS

### Features

- High strength 525 gallon polyethylene water tank
- Industrial DOT Certified dual axle trailers
- Rear mounted accessory hose bin
- Suction/Discharge hose sections provided
- Trusted Multiquip centrifugal water pumps
- Simple 2-control handle manifold system
- Left/right discharge and suction ports
- Cam and Groove lock discharge and suction couplers
- Rear spray bar system
- Rugged, convenient steel hydrant fill tube



### Technical specifications

MODEL	CAPACITY GAL	PUMP GPM	MAX HEAD FT	ENGINE	TRAILER	WEIGHT (DRY) LBS
WT5C	525	158	115	HONDA GX-120	DUAL AXLE DOT APPROVED	1,428
WTE5C	525	158	115	HONDA GX-120	DOT APPROVED ELECTRIC BRAKES	1,428
WT5HP	525	106	230	HONDA GX160	DUAL AXLE DOT APPROVED	1,538
WTE5HP	525	106	230	HONDA GX160	DOT APPROVED ELECTRIC BRAKES	1,538

#### ACCESSORIES - HOSES

MODEL	HOSE TYPE	SIZE IN	LENGTH FT	COUPLER	PSI CAPACITY
HS220	SUCTION	2	20	NPT THREAD	75
HSQ220	SUCTION	2	20	QUICK DISCONNECT	75
HSQ225	SUCTION	2	25	QUICK DISCONNECT	75
HD225	DISCHARGE	2	50	NPT THREAD	75
HDO225	DISCHARGE	2	20	QUICK DISCONNECT	75
HDFNST	FIRE HYDR. DISCHARGE	1.5	25	QUICK DISCONNECT	200
WT5HR	HOSE REEL ASSEMBLY	1	50	NPT THREAD	200

## MAYCO MECHANICAL BALL VALVE PUMPS

### Features

- Powerful, 45 HP Zenith Gasoline
- One-piece forged, heat-treated crankshaft
- 3-speed volume control allows the operator to vary the flow
- Fully-enclosed “splash” lubrication box provides clean, positive piston lubrication
- Ball and valve seat



### Technical specifications

MODEL	MAX AGGREGATE IN (MM)	PUMPING RATE YDS <sup>3</sup> /HR (M <sup>3</sup> /HR)	ENGINE	HP (KW) <sup>1</sup>	WEIGHT LBS (KG)
C30HDG A	1/2 (10-12)	25 (19)	ZENITH GASOLINE	45 (33.5)	2,910 (1,320)

<sup>1</sup> See page 50 for details.

## MAYCO HYDRAULIC SWING TUBE PUMPS

### Features

- Versatile—shotcrete, masonry block fill, slabs, footings
- Designed to pump larger aggregate up to 1-1/2"
- Variable volume output from 0 to 45 cu. yds. per hour
- Up to 1,100 psi piston face pressure
- Digital diagnostic control panel
- Available with optional wireless remote control



### Technical specifications

MODEL	MAX AGGREGATE IN (MM)	PUMPING RATE YDS <sup>3</sup> /HR (M <sup>3</sup> /HR)	ENGINE	HP (KW) <sup>1</sup>	WEIGHT WITHOUT FUEL LBS (KG)
LS300G	1.5 (38)	30 (22.9)	ZENITH GASOLINE	71.2 (53.16)	3,855 (1,748)
LS450	1.5 (38)	45 (34)	HATZ TURBO DIESEL	74.5 (55.5)	5,155 (2,328)

<sup>1</sup> See page 50 for details.

## TOWABLE CONCRETE MIXERS

### Features

- Steel drum or polyethylene versions available
- Variety of power sources
- Leaf springs standard on 6-, 9- and 12-cu. ft. mixers
- Oversized dump wheel – easier to discharge material
- 13" tires for safe towing
- Steel mixers available with 4-, 6- or 9-cu. ft. drums
- Polyethylene models available with 6-, 9- or 12-cu. ft. drums; simplify cleanup while resisting rust and dents



Polyethylene Drum



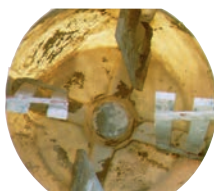
Steel Drum

### Technical specifications

STEEL MODEL	POLY MODEL	CAPACITY CU FT (L)	DRUM OPENING IN (MM)	ENGINE	HP (KW) <sup>1</sup>
MC44SE	–	4 (113)	17.5 (445)	115V	0.5 (.37)
MC44SH	–	4 (113)	17.5 (445)	HONDA	3.5 (2.6)
MC64SE	MC64PE	6 (169)	19 (483)	115/230V	1.5 (1.1)
MC64SH5	MC64PH5	6 (169)	19 (483)	HONDA	4.8 (3.6)
MC64SH8	MC64PH8	6 (169)	19 (483)	HONDA	7.9 (5.8)
MC94SE	MC94PE	9 (254)	21 (533)	115/230V	1.5 (1.1)
MC94SH8	MC94PH8	9 (254)	21 (533)	HONDA	7.9 (5.8)
	MC12PH	12 (339)	20 (508)	HONDA	10.7 (7.9)

<sup>1</sup> See page 50 for details.

### POLYETHYLENE DRUMS



**Polyethylene drum mixers clean out easily and quickly!** These photos show a batch of concrete that was left to dry for more than 24 hours. With a few taps of a mallet, virtually all the dried material falls out of the mixer. It's truly that simple to clean!

## PORTABLE CONCRETE MIXERS

### Features

- Mix-N-Go is perfect for homeowners, small jobs and multiple work sites

### Technical specifications

MODEL	DRUM CONSTRUCTION	BATCH CAPACITY CU FT (L)	DRUM OPENING IN (MM)	ENGINE
MC3PEA	POLY	3 (85)	15.5 (394)	3/4 HP, 115V, 1Ø ELECTRIC



## MUDTUBS

### Features

- Capacity 10-cu. ft. (.28 m3)
- Highly durable polyethylene construction resistant to cold weather and UV
- Our tough Easy Clean™ tubs can be cleaned in minutes with tap of rubber mallet
- Resists dents, rust or cracks
- Mud Tub features 4" x 4" rectangular steel feet
- Mud Tub W features heavy-duty, high impact resistance 8 inch casters
- One-year warranty
- Approximate 1,000 lb. capacity



Mobile

### Technical specifications

MODEL	TUB TYPE	DIMENSIONS IN (CM)	WEIGHT LBS (KG)
MUDTUB	STATIONARY	L 56.75 (1,141) W 28.25 (717.5) H 22.75 (577.8)	54 (24.4)
MUDTUBW	MOBILE	L 56.75 (1141) W 28.25 (717.5) H 28.25 (717.5)	81 (36.7)

## WHITEMAN TOWABLE PLASTER/MORTAR MIXERS

### Features

- Hydraulic-drive options on 12-cu. ft. models
- Available in 6.3-, 7-, 9- and 12-cu. ft. models
- Heavy-duty safety grate with built-in bag cutter
- 13" tires for safe towing
- Forklift pockets
- Steel models offer durable drum up to 3/16" thick
- Polyethylene drums simplify cleanup while resisting rust and dents



### Technical specifications

STEEL MODEL	POLY MODEL	CAPACITY CU FT (L)	ENGINE	HP (KW) <sup>1</sup>	DRIVE
WM63H8	—	6.3 (178)	HONDA	7.9 (5.8)	V-BELT/GEAR
WM63H5	—	6.3 (178)	HONDA	4.8 (3.6)	V-BELT/GEAR
WM63E	—	6.3 (178)	115/230V,1Ø	1.5 (1.1)	V-BELT/GEAR
WM70SE	WM70PE	7 (198.2)	115/230V,1Ø	1.5 (1.1)	V-BELT/GEAR
WM70SH5	WM70PH5	7 (198.2)	HONDA	4.8 (3.6)	V-BELT/GEAR
WM70SH8	WM70PH8	7 (198.2)	HONDA	7.9 (5.8)	V-BELT/GEAR
WM90SE	WM90PE	9 (254.9)	230V,1Ø	3.0 (2.2)	V-BELT/GEAR
WM90SH8	WM90PH8	9 (254.9)	HONDA	7.9 (5.8)	V-BELT/GEAR
WM120SHHD	WM120PHD	12 (339.8)	HONDA	11.7 (8.7)	HYDRAULIC

<sup>1</sup> See page 50 for details.

## PORTABLE NON-TOWABLE MORTAR MIXERS



### Technical specifications

STEEL MODEL	CAPACITY CU FT (L)	ENGINE	HP (KW) <sup>1</sup>	DRIVE
WM45H	4.5 (113)	HONDA	4.8 (3.6)	V-BELT/GEAR
WM45E	4.5 (113)	115/230V,1Ø	1.0 (0.7)	V-BELT/GEAR

<sup>1</sup> See page 50 for details.

# PLASTER/MORTAR MIXERS

## ESSICK TOWABLE PLASTER/MORTAR MIXERS

### Features

- Full range of mixers designed for professional masonry contractors
- Towable mixers with 7-, 9- and 12-cu. ft. capacities
- Paddle shaft seals require no greasing
- Smooth towing whether on the job or on the highway



Steel Drum

### Technical specifications

STEEL MODEL	CAPACITY CU FT (L)	ENGINE	HP (KW) <sup>1</sup>	DRIVE
EM70SE	7 (198.2)	115/230V	1.5 (1.1)	V-BELT/GEAR
EM70SH5	7 (198.2)	HONDA	4.8 (3.6)	V-BELT/GEAR
EM70SH8	7 (198.2)	HONDA	7.9 (5.9)	V-BELT/GEAR
EM90SE	9 (254.9)	230V, 1Ø	3.0 (2.2)	V-BELT/GEAR
EM90SH8	9 (254.9)	HONDA	7.9 (5.9)	V-BELT/GEAR
EM12M51	12 (339.8)	230V, 1Ø	5.0 (3.7)	MECHANICAL
EM12ME53	12 (339.8)	230/460V, 3Ø	5.0 (3.7)	MECHANICAL
EM12M	12 (339.8)	HONDA	11.7 (8.7)	MECHANICAL
EM120HYD	12 (339.8)	HONDA	11.7 (8.7)	HYDRAULIC

<sup>1</sup> See page 50 for details.

## ESSICK PRO MIXERS

### Features

- PRO12 & PRO20 models offer stationary design for silo applications
- Easy loading – operator loads at waist height
- Hydraulic drive handles tough mix designs – including 1-inch aggregate
- Powerful engine equipped recoil and electric start
- Forklift pockets standard on all models
- Battery included



### Technical specifications

#### STATIONARY MODELS

MODEL	CAPACITY CU FT	ENGINE	HP (KW) <sup>1</sup>	DRIVE
PRO12	12	HONDA GX390	11.7 (8.7)	HYDRAULIC
PRO12E51	12	ELECTRIC	5 HP 1Ø 230V	HYDRAULIC
PRO12E53	12	ELECTRIC	5 HP 3Ø 230V	HYDRAULIC
PRO12E53-460V	12	ELECTRIC	5 HP 3Ø 460V	HYDRAULIC
PRO20	20	VANGUARD	18.0 (13.4)	HYDRAULIC

<sup>1</sup> See page 50 for details.

## REBAR BENDERS

### Features

- Compact design for use on the jobsite or in the shop
- Control knob selects precise bending angle
- Standard with foot control switch
- A full variety of rollers and collars are included to accommodate all rebar sizes up to 1" diameter



### Technical specifications

MODEL	BENDING CAPACITY IN (MM)	BENDING SPEED SECONDS	BENDING RANGE	ELECTRIC MOTOR	OPER. WEIGHT LBS (KG)
MB25A*	1.0 (25.4)	5 SECONDS FOR 180°	0-180°	115V, 60HZ	227 (103)

\* Not currently available for sale or use in Canada.

## REBAR CUTTERS

### Features

- HBC features 1" maximum capacity; powered by 115V electric motor
- Compact and lightweight for easy portability
- Replaceable cutting blocks with multiple cutting edges
- Built-in hydraulic pump with magnetic particle filtering



### Technical specifications

MODEL	CUTTING DIAMETER IN (MM)	CUTTING SPEED SECONDS	RATED POWER AMPS	ELECTRIC MOTOR	WEIGHT LBS (KG)
115V MODELS					
HBC19B	3/4 (19)	2.5	9	115V, 60HZ, 1Ø	28 (12.8)
HBC25B	1 (25)	3.5	12	115V, 60HZ, 1Ø	48 (22)

## WHITEMAN POWER BUGGIES

### Features

- Heavy-duty frame with 6" dump height
- 8%-10% greater dumping reach – 5% greater dumping angle than competitors
- Easy Clean™ Poly Tub
- Available with optional all-wheel drive



### Technical specifications

MODEL	WIDTH IN (MM)	LENGTH IN (MM)	MAX LOAD LBS (KG)	CAPACITY CU. FT (CU.M)	STARTING SYSTEM	FUEL CAPACITY GAL (L)	HP (KW) <sup>1</sup>	SPEED MPH (KPH)
WBH16F*	44 (1,171.6)	103 (2,641.6)	2,500 (1,134)	16 (3.5)	RECOIL	4.8 (18.5) GAS	11.7 (8.7)	7.25 (11.66)
WBH16EF*	44 (1,171.6)	103 (2,641.6)	2,500 (1,134)	16 (3.5)	RECOIL & ELECTRIC	4.8 (18.5) GAS	11.7 (8.7)	7.25 (11.66)
WB-H16EAWDF*	44 (1,171.6)	103 (2,641.6)	2,500 (1,134)	16 (3.5)	RECOIL & ELECTRIC	4.8 (18.5) GAS	18.0 (10.4)	7.25 (11.66)
WBH21EF*	44 (1,171.6)	103 (2,641.6)	3,200 (1,451)	21 (0.59)	RECOIL & ELECTRIC	4.8 (18.5) GAS	18.0 (10.4)	7.25 (11.66)
WBH21EFP	44 (1,171.6)	103 (2,641.6)	3,200 (1,451)	21 (0.59)	RECOIL & ELECTRIC	7.5 (PROPANE)	18.0 (10.4)	7.25 (11.66)

\* Foam-filled tires.

<sup>1</sup> See page 50 for details.

Model WTB16PD  
Also available straight dump



### Technical specifications

MODEL	WIDTH IN (MM)	LENGTH IN (MM)	MAX LOAD LBS (KG)	CAPACITY CU. FT (CU.M)	STARTING SYSTEM	FUEL CAPACITY GAL (L)	HP (KW) <sup>1</sup>	SPEED MPH (KPH)	DISCHARGE POSITION
WTB16	35.5 (90.2)	102 (2,590)	2,500 (1,134)	16 (0.453)	ELECTRIC	5.0 (18.9)	22.0 (16.4)	4.7 (7.6)	STRAIGHT DUMP
WTB16PD	35.5 (90.2)	110.2 (2,800)	2,500 (1,134)	16 (0.453)	ELECTRIC	5.0 (18.9)	22.0 (16.4)	4.7 (7.6)	PIVOT DUMP

<sup>1</sup> See page 50 for details.



## TUFFTRUK WALK BEHIND POWER BUGGY

### Features

- Zero Emission battery drive
- Long-lasting charge solid 8 hours or typically two or three days under normal conditions
- Quiet operation produces very low noise
- True 4-wheel drive with flotation tires
- Excellent maneuverability with 40 degree articulation
- Available with a variety of attachments
- Rugged steel or poly tub



### Technical specifications

MODEL	WIDTH IN (MM)	LENGTH IN (MM)	MAX LOAD LBS (KG)	CAPACITY CU. FT (CU.M)	STARTING SYSTEM	SPEED MPH (KPH)	TUB TYPE
TB11E	34.5 (86.3)	68.5 (1739)	990 (449)	10.6 (0.300)	BATTERY POWERED	0-4 (0-6.4)	STEEL TUB
TB11G	34.5 (86.3)	68.5 (1739)	990 (449)	10.6 (0.300)	HONDA 5.5 HP	0-4 (0-6.4)	STEEL TUB
TB11PE	34.5 (86.3)	68.5 (1739)	990 (449)	10.6 (0.300)	BATTERY POWERED	0-4 (0-6.4)	POLY TUB
TB11PG	34.5 (86.3)	68.5 (1739)	990 (449)	10.6 (0.300)	HONDA 5.5 HP	0-4 (0-6.4)	POLY TUB

#### Optional Accessories

MODEL	DESCRIPTION
TSP	SNOW PLOW
TTBH	TOWING HITCH
TT7	7FT <sup>3</sup> CLIP ON TUB
TFB33	33.4" FLATBED
TFB29	29" FLATBED
TTH	DUMP HANDLE
TTE	TUB EXTENSION KIT

## MIKASA UM VIBRATORS

### Features

- Lightweight and powerful 120V motor
- Ideal for footings and block walls
- Vibration dampening handle design
- Three shaft and four head sizes available



### Technical specifications

COMPLETE ASSEMBLY (MOTOR, HEAD, SHAFT)

MODEL	AMPS	HEAD DIAMETER IN (MM)	OVERALL LENGTH FT (M)	FREQUENCY VPM (HZ)	SET WEIGHT LBS (KG)
UM12325	3.8	0.9 (23)	9.6 (2.9)	12,000-15,500 (200-258)	14.3 (6.5)
UM12810	3.8	1.1 (28)	4.7 (1.4)	12,000-15,500 (200-258)	11.4 (5.2)
UM12815	3.8	1.1 (28)	6.3 (1.9)	12,000-15,500 (200-258)	13 (5.9)
UM12825	3.8	1.1 (28)	9.6 (2.9)	12,000-15,500 (200-258)	16.06 (7.3)
UM13225	3.8	1.25 (32)	9.6 (2.9)	12,000-15,500 (200-258)	16.5 (7.5)
UM13810	3.8	1.5 (38)	4.7 (1.4)	12,000-15,500 (200-258)	12.54 (5.7)
UM13815	3.8	1.5 (38)	6.3 (1.9)	12,000-15,500 (200-258)	14.11 (6.4)
UM13825	3.8	1.5 (38)	9.6 (2.9)	12,000-15,500 (200-258)	17.16 (7.8)

## BACKPACK & FLEX-SHAFT VIBRATORS

### Features

- Gasoline-powered backpack and stationary drive motor or electric handheld motors available
- Flexible shafts from 2 ft. to 21 ft. long
- UL compliance testing to USA and Canadian standards on all electric motors
- Ideal for footings and block walls
- Six heads from 7/8" to 2-5/8" available



### Technical specifications

HAND-HELD ELECTRIC MOTORS

MODEL	VOLTAGE	AMPS	RPM	WEIGHT LBS (KG)
CV1A	120V	10	16,000	11 (5)
CV2A	120V	15	18,000	13 (6)
CV2B	240V	7.5	18,000	13 (6)
CV3A	120V	20	19,250	14 (6)
CV3B	240V	10	19,250	14 (6)

GASOLINE DRIVE

MODEL	ENGINE	HP (KW) <sup>1</sup>	MOTOR TYPE	WEIGHT LBS (KG)
BPX	HONDA	2.1 (1.6)	BACKPACK	31 (14)
G55H	HONDA	4.8 (3.6)	STATIONARY/SWIVEL	74 (33)

HEADS AND SHAFTS

STEEL HEAD DIAMETERS IN (MM)	FLEXIBLE SHAFT LENGTHS FT (M)
7/8 (22), 1-1/16 (27), 1-3/8 (35), 1-11/16 (43), 2-1/8 (54), 2-5/8 (67)	2 (.6), 7 (2.1), 10 (3), 12 (3.7), 14 (4.3), 21 (6.4)

<sup>1</sup> See page 50 for details.



## HIGH-CYCLE GENERATORS (FOR FXA VIBRATORS)

### Features

- Powers up to three high-cycle vibrators simultaneously
- 5kVA, 230-volt, 180-cycle output
- 3,600 watts continuous 60-cycle, single-phase power
- Reliable Honda engine with recoil start, low-oil shutdown and idle control
- Lifting bail for easy moving
- All receptacles GFCI protected

### Technical specifications

MODEL	MAX/CONT @180HZ	OUTPUT @180HZ	MAX/CONT @60HZ	OUTPUT @60HZ	ENGINE	HP (KW) <sup>1</sup>	WEIGHT LBS (KG)
GDP5HA*	5KVA	230V, 12.5A	4KW/3.6KW	120/240V, 60HZ, 30/15A	HONDA GX340	9.5 (7.1)	236 (107)

\* Not currently available for sale or use in Canada.

<sup>1</sup> See page 50 for details.

## MIKASA FXA HIGH-CYCLE CONCRETE VIBRATORS

### Features

- Ideal for medium- to low-slump applications
- Motor-in-head design minimizes VMP loss under load
- Extended hose lengths available in 10' and 20' increments
- Cable extensions available in 50' and 100' increments

### Technical specifications

MODEL	HEAD DIA IN (MM)	HEAD LENGTH IN (MM)	HOSE LENGTH FT (M)	CORD LENGTH FT (M)	AMPS	CENTRIFUGAL FORCE LBS (KG)	VPM	WEIGHT LBS (KG)
FXA50A4	2 (51)	16-1/2 (419)	13.1 (4)	33 (10)	2	714 (324)	10,800	36 (16)
FXA50A6	2 (51)	16-1/2 (419)	20 (6.1)	33 (10)	2	714 (324)	10,800	55 (25)
FXA60A4	2-3/8 (60)	19-1/4 (260)	13.1 (4)	33 (10)	4.5	1,600 (726)	10,800	42 (19)
FXA60A6	2-3/8 (60)	19-1/4 (260)	20 (6.1)	33 (10)	4.5	1,600 (726)	10,800	65 (29)

## Hose Extension Kit for FXA High Cycle Concrete Vibrators

MODEL	FEET	WEIGHT
FXAKIT10FT	10	20 LB
FXAKIT20FT	20	40 LB

*Extended High Cycle Lengths are available. Additional handling hose may be added in 10-foot and 20-foot increments to meet application requirements. Extensions are special order, contact Multiquip for terms and lead times.*

# SCREEDS

## WHITEMAN DUOSCREEDS

### Features

- Blade quickly removed without tools; handle folds for storage
- Powered by maintenance-free flexible shaft
- Unique patented reversible blade design allows both form-to-form and wet screeding with a single blade



### Technical specifications

SCREED MODEL	ENGINE	HP (KW) <sup>1</sup>	VPM	DRIVE SYSTEM	WEIGHT LBS (KG)
DSGPULW	HONDA GX35	1.3 (1.0)	5,500	FLEXIBLE SHAFT MAINTENANCE FREE	32 (14.5)
MODEL: DSBLW					
BLADE WIDTHS FT (M)					
6 (1.8)	8 (2.44)	10 (3.0)	12 (3.66)	14 (4.27)	16 (4.88)

<sup>1</sup> See page 50 for details.

### DUOSCREED BLADE

The handheld screed uses a unique reversible blade that is designed for form-to-form and wet screeding.



# RIDE-ON TROWELS

## FLOAT PANS & TROWEL BLADES

**Pans: Superflat or flat configurations, for use with ride-on trowels, and flat or domed for use with walk-behind trowels.**



Allows fast floating and easy movement from wet to dry areas. Excellent for applying shake-on toppings. Achieve higher FF numbers and increased production. Available in the following sizes: 24", 36", 46" and 60".

**Blades: Float, finish and combination float/finish for walk-behind and ride-on trowels**

Interchangeable with most competitive models. Provides best possible results when used with Whiteman trowels.



Unique Enduro Blade series features heavy-duty design, providing up to 50% longer life. Quick-change blades have bolt-less design for fast, easy blade replacement.

## WHITEMAN TRUSS SCREEDS

### Features

- Durable triangular steel truss spans up to 65 ft.
- Gas engine-driven vibration, steel truss design
- Heavy-duty steel construction
- Optional self-propelled winches minimize labor
- Engine-Powered



### Technical specifications

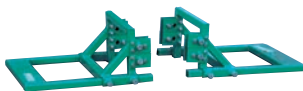
DESCRIPTION	MODEL	WEIGHT LBS (KG)
2.5-FT.(0.76M) TRUSS SECTION	MSHE25	57 (26)
5.0-FT.(1.5M) TRUSS SECTION	MSHE50	95 (43)
7.5-FT.(2.28M) TRUSS SECTION	MSHE75	136 (62)
SELF-PROPELLED WINCH - (LEFT)(RIGHT)	WSHESPW(L)(R)*	105 (48)
END HANDLE SET	MSHEH	54 (27)
11 HP HONDA ENGINE KIT	MSHEKIT11H	112 (51)
5' SECTION W/ WSHEKIT11H MOUNTED	MSHE50KIT11H	207 (94)
UNIVERSAL JOINT KIT	WSHEKITUJ	22 (10)
INVERT CROWN KIT	WSHEIC	98 (45)
REINFORCEMENT BRACKET	WSHRBE	6 (2.7)
ADJUSTABLE END BRACKET	WSKITAEB	24 (11)
ADJUSTABLE END BRACKET WITH ROLLERS	WSKITAEBR	26 (12)
HAND WINCH SET	WSHW	42 (19)

\*Includes standard mounted 2.5 ft. sections.

### SCREED KITS AND ACCESSORIES



Universal Joint Kits



Adjustable End Brackets



Invert/Crown Kits



Adjustable End Brackets with Rollers

**WHITEMAN INSTACLUTCH™****Features**

- Advanced friction clutch stops the unit before a quarter of a turn if the operator releases the handle at full RPM
- Eliminates need to throttle engine down during momentary work stoppages
- Four blade spider assembly features economically replaceable wear parts that reduce maintenance costs over the life of the machine
- Proven gearbox durability delivers years of trouble-free operation
- Handle assemblies for the InstaClutch™ system include a Standard or QuickPitch™ option

**Technical specifications**

MODEL	ROTOR RPM	ENGINE	HP (KW) <sup>1</sup>	LBS (KG)	HANDLES
36-INCH (914 MM)					
JH55C	60-115	HONDA GX160	4.8 (3.6)	164 (74.3)	SXHC OR QXHC
JH90C	60-130	HONDA GX270	8.5 (6.3)	190 (86.1)	
46-INCH (1218 MM)					
BH11C	60-130	HONDA GX340	10.7 (7.9)	247 (112)	SXHC OR QXHC
BH90C	60-130	HONDA GX270	8.5 (6.3)	245 (111)	

<sup>1</sup> See page 50 for details.**WHITEMAN HEAVY-DUTY TROWELS****Features**

- High-speed models for burnishing of slabs
- Heavy-duty gearboxes to handle extra weight and performance of the HDA series
- Variable-speed transmission on HDA48413H
- CVT drive system allows the high torque panning and high speed for burnishing slabs

**Technical specifications**

MODEL	COVERAGE IN (MM)	BLADES	ROTOR RPM	ENGINE	HP (KW) <sup>1</sup>	WEIGHT LBS (KG)
HDA48413H	48 (1,220)	4	30-225	HONDA	11.7 (8.7)	315 (166)

<sup>1</sup> See page 50 for details.

## WHITEMAN TROWELS

### Features

- Reliable gasoline engines and electric motors
- Optional QuickPitch™ Control for fast, precise blade adjustment
- Equipped with heavy-duty centrifugal clutch
- Optional manual (hand) clutch
- Precision balanced for the ultimate finish
- CA4HM has folding handle
- J3036H55 edger converts from 30" to 36"



### Technical specifications

MODEL	COVERAGE IN (MM)	HP (KW) <sup>1</sup>	MOTOR	RPM
CA4HM	24 (610)	3.5 (2.6)	HONDA	70-130
CA4HC	24 (610)	3.5 (2.6)	HONDA	70-130
J36E2	36 (914)	2 (1.5)	230V	30-160
J3036H55	36 (914)	4.8 (3.6)	HONDA	60-115
J36H55	36 (914)	4.8 (3.6)	HONDA	60-115
J36H90H	36 (914)	8.5 (6.3)	HONDA	90-155
B46H90	46 (1,170)	8.5 (6.3)	HONDA	60-130
B46H11H	46 (1,170)	9.5 (7.1)	HONDA	90-155

<sup>1</sup> See page 50 for details.

## WHITEMAN TROWELS - MECHANICAL DRIVE

### Features

- Twin 36" and 48" models
- HHNG5 features air-cooled 35 HP Vanguard engine
- Twin Pitch control simultaneously adjusts blade pitch of rotors or disengages to adjust individually
- CVT Drive System allows high-torque panning and high-speed for burnishing slabs



### Technical specifications

MODEL	PATH WIDTH IN (MM)	ROTOR RPM	ENGINE	HP (KW) <sup>1</sup>	WEIGHT LBS (KG)
JWN24HTCSL	75 (1,910)	30-180	HONDA	24 (17.8)	685 (209)
HHNG5	92 (2,336.8)	0-180	VANGUARD	35 (26)	1,083 (491)
HHXDF5	92 (2,336.8)	0-180	KUBOTA WG972	31 (22.8)	1,654 (750)

<sup>1</sup> See page 50 for details.

## WHITEMAN HYDRAULIC DRIVE TROWELS/ ELECTRIC DRIVE POWER FLOAT

### Features

- Patented Engine Power management senses engine load and adjusts hydraulic pump stroke allowing engine to run at peak efficiency
- 6-ft, 8-ft, 10-ft, & 12-ft models available
- Optimum speed and torque range for floating and finishing
- SmartPitch, cruise control, and LED lighting
- Tier 4 final Hatz engines on STX6H/HTX6H models
- Ford Power Products engines on STXDF/PRX models
- Clamshell design simplifies maintenance and permits convenient access to all service items
- Gasoline/Propane option on HTXG6DF, STXDF, & PRX
- Lights and spray system factory-installed on LD6SL



### Technical specifications

MODEL	PATH WIDTH IN (MM)	ROTOR RPM	ENGINE	HP (KW) <sup>1</sup>	WEIGHT LBS (KG)
LD6	75 (1950)	0-140	BRIGGS & STRATTON V TWIN	23 (17)	865 (393)
LD6SL	75 (1950)	0-140	BRIGGS & STRATTON V TWIN	23 (17)	865 (393)
HTX6H	92 (2,336.8)	0-160	HATZ TURBO DIESEL (TIER 4 FINAL )	70 (52.1)	2,345 (1,063)
STX6H	117 (2,971.8)	0-130	HATZ TURBO DIESEL (TIER 4 FINAL )	70 (52.1)	2,544 (1,153)
STXDF	117 (2,971)	0-150	2.5 LITER FORD POWER PRODUCTS DUAL FUEL	84 (61)	2600 (1179.3)
HTXG6DF	92 (2,336.8)	10-160	PSI 2.4L DUAL FUEL	68 (50.7)	2,133 (968.6)
PRX	146 (3708)	0-100	3.7 LITER FORD POWER PRODUCTS DUAL FUEL	107 (79)	4166 (1889)

<sup>1</sup> See page 50 for details.



# CHEMICAL SPRAYING SYSTEM

## Features

- Durable 5.5 HP gear reduction Honda GX160 engine allows for years of trouble-free service
- WSC55BM attachment offers the versatility of moving from a rolling cart to a stationary barrel for ease of application
- Quick disconnect hoses offer the ability to quickly change from one product to another
- Chemical Platform is sloped by design to allow all liquid to easily be dispensed from any container
- Tow handle allows this unit to be moved on the job site by hand unloaded, or with an all-terrain fork truck when loaded
- Engine driven compressor allows the operator to recycle any leftover product remaining in the system back into the original container (Compressor Offered on WSC55 only)
- Simple parking brake allows the unit to be secured on unstable or uneven ground at all times
- Smooth tires have no tread to reduce risk of surface defects
- Easy access to hose connections
- Accessory tray enables all fittings and nozzles to be kept in one location
- Operating weight: 290 LBS



CHEMICAL SPRAYERS

## Technical specifications

MODEL	ENGINE	HP (KW) <sup>1</sup>	LBS (KG)	FUEL CAP.	GPM	PUMP TYPE
WSC55	HONDA GX160	4.8 (3.6)	290 (131)	.825 US GL	7 @ 125 PSI	ROLLER
WSC55BM (BARREL MOUNT)	HONDA GX160	4.8 (3.6)	82 (37)	.825 US GL	7 @ 125 PSI	ROLLER
WSC55C (CART ONLY)	-	-	-	-	-	-

<sup>1</sup> See page 50 for details.

## MQ WHITEMAN CONCRETE SOLUTIONS

For more than 75 years, MQ Whiteman has been recognized around the world as the leader in flat floor placement and finishing. Now we expand our line with a revolutionary group of environmentally-friendly chemical solutions. MQ SlabArmor™ Products will forever change the way concrete is placed, finished and maintained.

### SlabArmor™ Finishing Solutions

Using walk-behind or ride-on power trowels, the SlabArmor™ patented curing formula and application process starts working immediately when applied during concrete placement. The nano-sized technology creates a hydration-enhancing vapor barrier and allows the contractor unprecedented control over the finishing process, extending the time to finish concrete in all weather conditions. Through this patented system, SlabArmor™ creates even hydration resulting in denser concrete and flatter floors with minimized cracking or curling.

### SlabArmor™ Starter/Closer



#### SlabArmor™ Starter / Finishing Aid

SlabArmor™ refines the surface of the slab while retaining 97% of the placement water, significantly minimizing volume loss, cracking and curling.



#### SlabArmor™ Closer / Densifier

This spray on, leave on material is a fast acting formula allowing for minimal down time.

With the SlabArmor™ system, consolidation of the construction schedule is possible due to all curing and densification happening at time of placement by the flatwork contractor. It is suitable for use on cementitious-based products and can be used in conjunction with diamond polishing and/or decorative color.

## SlabArmor™ Plus Maintenance Solutions

SlabArmor™ Plus products assist in the restoration and revitalization of existing concrete, while they also protect and maintain your SlabArmor™ cured concrete. Through continued use, MQ SlabArmor™ Plus products create a denser, more sustainable finish over time. This also includes a family of pH neutral products that effectively removes the built-up concrete from concrete mixer drums and equipment in an environmentally responsible manner.

### SlabArmor™ Plus Clean&Condition



This high performance neutral pH cleaner, conditioner and restorer quickly releases oils and deposits from the floor surface through a sophisticated proprietary chemical matrix of hyper-effective wetting agents. SlabArmor™ Plus Clean&Condition is specially formulated to clean and enhance polished concrete. Regular use will increase the abrasion resistance of any concrete floor.

### SlabArmor™ Plus Condition&Restore



Cleaning floors has never been easier. SlabArmor™ Plus Condition&Restore is a powerful, easy to use cleaner that restores gloss and durability to floors while washing away dirt, grime and any other undesirable materials. This economical product will reduce the amount of labor required in the cleaning process, as well as extend the life of the floor.

### SlabArmor™ Plus Seal&Shine



A reactive penetrating product that forms an insoluble chemical bond to produce a dense sealed surface, with superior hardness, enhanced gloss and slip resistance.

### PermaMelt™



Can be used as an Anti-Icer to prevent accumulation of snow and ice before the storm, or as a De-Icer after the storm to facilitate ice and snow removal.

### SlabArmor™ Plus Equipment Wash

(Not pictured.) Achieve results that last while reducing maintenance expenses and upkeep requirements over the life of your equipment.

### SlabArmor™ Plus Drum Wash



Attain greater levels of ROI and increase overall operating efficiencies by hauling only what you get paid for.

## ALPHA CONCRETE & MORTAR DISSOLVER

Alpha Concrete & Mortar Dissolver is a liquid compound specifically formulated to dissolve built up cement or mortar on tools and equipment.



EarthSmart™

### Features

- Removes all types of cement, concrete, mortar, grout and stucco
- Removes mineral deposits from any surface
- 100% biodegradable, non-corrosive and acid-free
- Will not cause rust or corrosion
- Safe to use on metals, equipment, wood, glass or painted surfaces
- Removes efflorescence from decorative concrete
- Fast acting and odorless

### Technical specifications

MODEL	Description
ALPHA22C12	(12) 22 OZ BOTTLE/CASE
ALPHA44P	(44) CASES/PALLET
ALPHA05	5 GAL PAIL
ALPHA05P	(36) PAILS/PALLET
ALPHA55	55 GAL DRUM
ALPHA55P	(4) 55 GAL DRUMS/PALLET

## DIAMOND BLADES

### Features

- Trusted Diamond Blades for cured concrete, asphalt, green concrete, masonry materials, tile and stone
- Multiple blade diameters and quality grades
- Laser weld technology, industrial steel cores and top quality diamond matrix formulas
- Guaranteed operating performance



## DIAMOND CUP WHEELS & GRINDING DISCS

### Features

- Top quality manufactured Grinding Wheels for cured concrete, mortar and all masonry materials
- Easily adapt to right-angle grinders and grinding machines
- Multiple disc diameters available
- Guaranteed operating performance



## DIAMOND CORE BITS

### Features

- High performance core bits for cured concrete, asphalt, tile, stone and masonry materials
- Laser weld technology
- Multiple bit diameters available
- Guaranteed operating performance







[www.Discount-Equipment.com](http://www.Discount-Equipment.com)

