



# **DUAL VOLTAGE SWITCH BOX PARTS LIST**

**MODELS  
CC1300/1800/2500**

**OCTOBER 14, 2015**

**Part # 1800918**

# PARTS FINDER

**Search Website  
by Part Number**



**Search Manual  
Library For Parts  
Manual & Lookup Part  
Numbers – Purchase  
or Request Quote**

**Search Manuals**

Enter your information to help us find the right parts manual for your machine.

\* Brand:

\* Model:

\* Serial:

\* Part Number:

SEARCH

**Can't Find Part or  
Manual? Request Help  
by Manufacturer,  
Model & Description**

**Parts Order Form**

Please fill in the following information to help us find the right part for your machine.

Manufacturer:	<input type="text"/>
Model:	<input type="text"/>
Description:	<input type="text"/>
Part Number:	<input type="text"/>
Quantity:	<input type="text"/>
Notes:	<input type="text"/>

Discount-Equipment.com is your online resource for quality parts & equipment.

Florida: **561-964-4949** Outside Florida TOLL FREE: **877-690-3101**

**Need parts?**

Click on this link: <http://www.discount-equipment.com/category/5443-parts/> and choose one of the options to help get the right parts and equipment you are looking for. Please have the machine model and serial number available in order to help us get you the correct parts. If you don't find the part on the website or on one of the online manuals, please fill out the request form and one of our experienced staff members will get back to you with a quote for the right part that your machine needs.

We sell worldwide for the brands: Genie, Terex, JLG, MultiQuip, Mikasa, Essick, Whiteman, Mayco, Toro Stone, Diamond Products, Generac Magnum, Airman, Haulotte, Barreto, Power Blanket, Nifty Lift, Atlas Copco, Chicago Pneumatic, Allmand, Miller Curber, Skyjack, Lull, Skytrak, Tsurumi, Husquvarna Target, Stow, Wacker, Sakai, Mi-T-M, Sullair, Basic, Dynapac, MBW, Weber, Bartell, Bennar Newman, Haulotte, Ditch Runner, Menegotti, Morrison, Contec, Buddy, Crown, Edco, Wyco, Bomag, Laymor, EZ Trench, Bil-Jax, F.S. Curtis, Gehl Pavers, Heli, Honda, ICS/PowerGrit, IHI, Partner, Imer, Clipper, MMD, Koshin, Rice, CH&E, General Equipment, Amida, Coleman, NAC, Gradall, Square Shooter, Kent, Stanley, Tamco, Toku, Hatz, Kohler, Robin, Wisconsin, Northrock, Oztec, Toker TK, Rol-Air, APT, Wylie, Ingersoll Rand / Doosan, Innovatech, Con X, Ammann, Mecalac, Makinex, Smith Surface Prep, Small Line, Wanco, Yanmar

### RECOMMENDED POWER CORD GAUGE

HORSE POWER	PHASE	VOLTS	AMPS	50 Ft. CORD	100 Ft. CORD	150 Ft. CORD	200 Ft. CORD
5hp	1ph	230v	23A	#10	#8	#6	#4
5hp	3ph	230v	12A	#14	#12	#10	#8
5hp	3ph	460v	6A	#14	#14	#12	#10
7.5hp	1ph	230v	33A	#8	#8	#6	#4
10hp	3ph	230v	24A	#10	#8	#6	#4
10hp	3ph	460v	12A	#14	#12	#10	#8
20hp	3ph	230v	52A	#6	#6	#4	#2
20hp	3ph	460v	26A	#10	#8	#6	#4
25hp	3ph	230v	58A	#6	#6	#4	#2
25hp	3ph	460v	29A	#10	#8	#6	#4
30hp	3ph	230v	74A	#6	#4	#2	#1
30hp	3ph	460v	37A	#8	#6	#4	#2
40hp	3ph	460v	48A	#8	#6	#4	#2
50hp	3ph	460v	62A	#4	#4	#2	#0

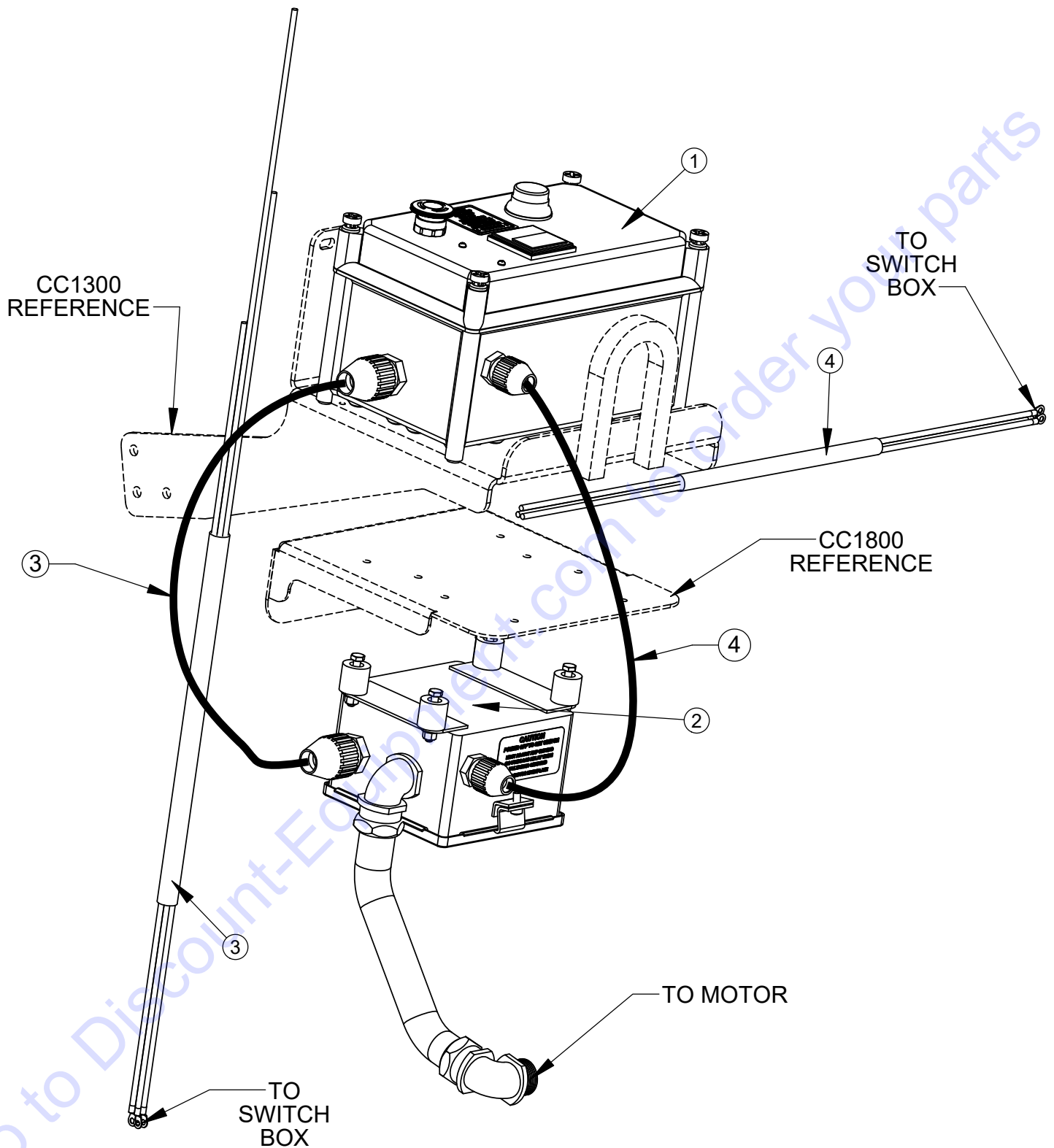
CAUTION: Use of a wire gauge that is too small will cause loss of power or overheating and will damage the electric motor.

# TABLE OF CONTENTS

<u>Description</u>	<u>Page No.</u>
CC 1300/1800 Dual Voltage Box Assembly.....	4 – 5
CC 2500 Dual Voltage Box Assembly.....	6 - 7
Starter Box.....	8 – 9
Switchbox Assembly.....	10
Warranty.....	Rear Cover

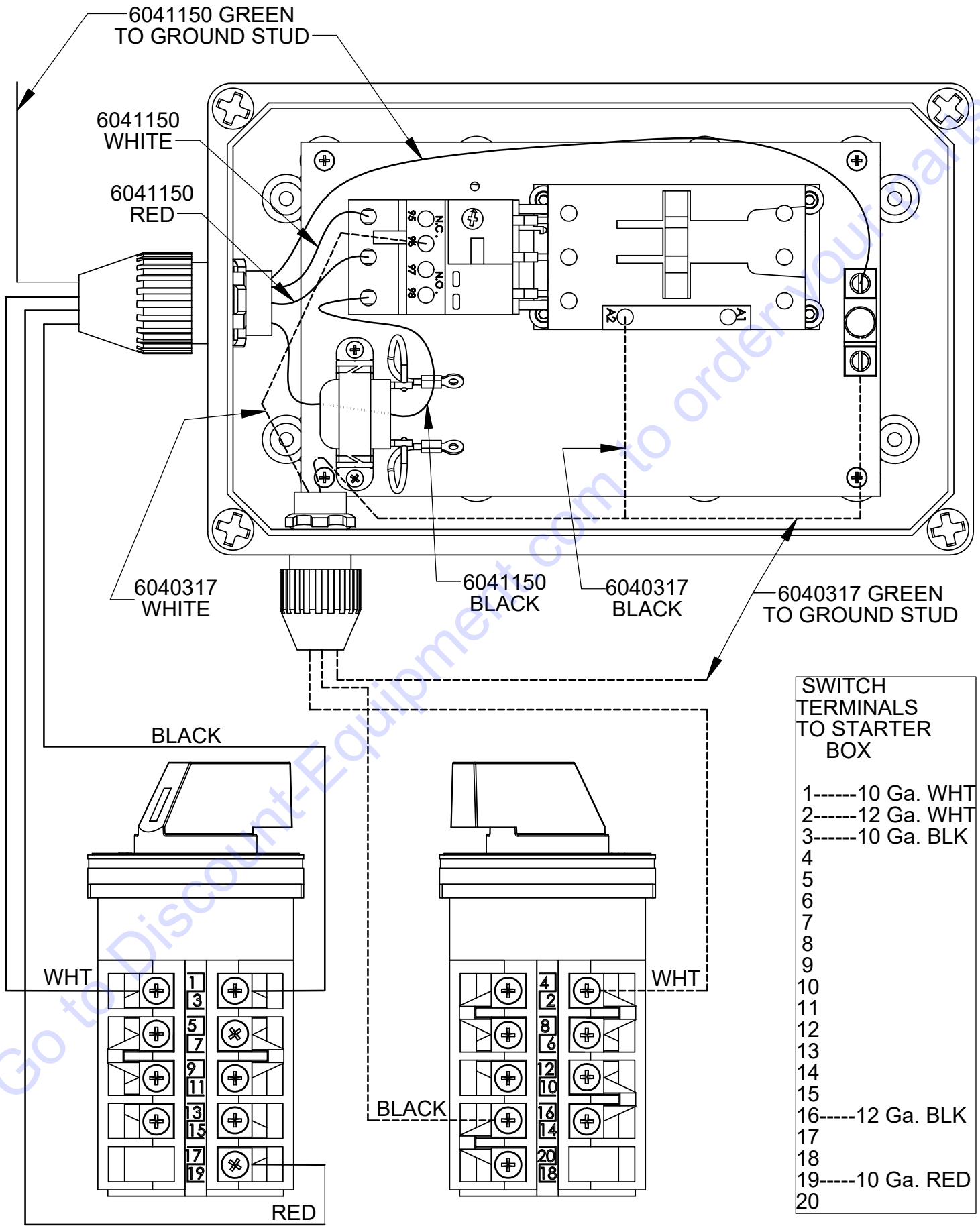
Go to [Discount-Equipment.com](http://Discount-Equipment.com) to order your parts

**6049028 DUAL VOLTAGE CONTROL BOX ASSEMBLY**  
**CC1300 / CC1800**

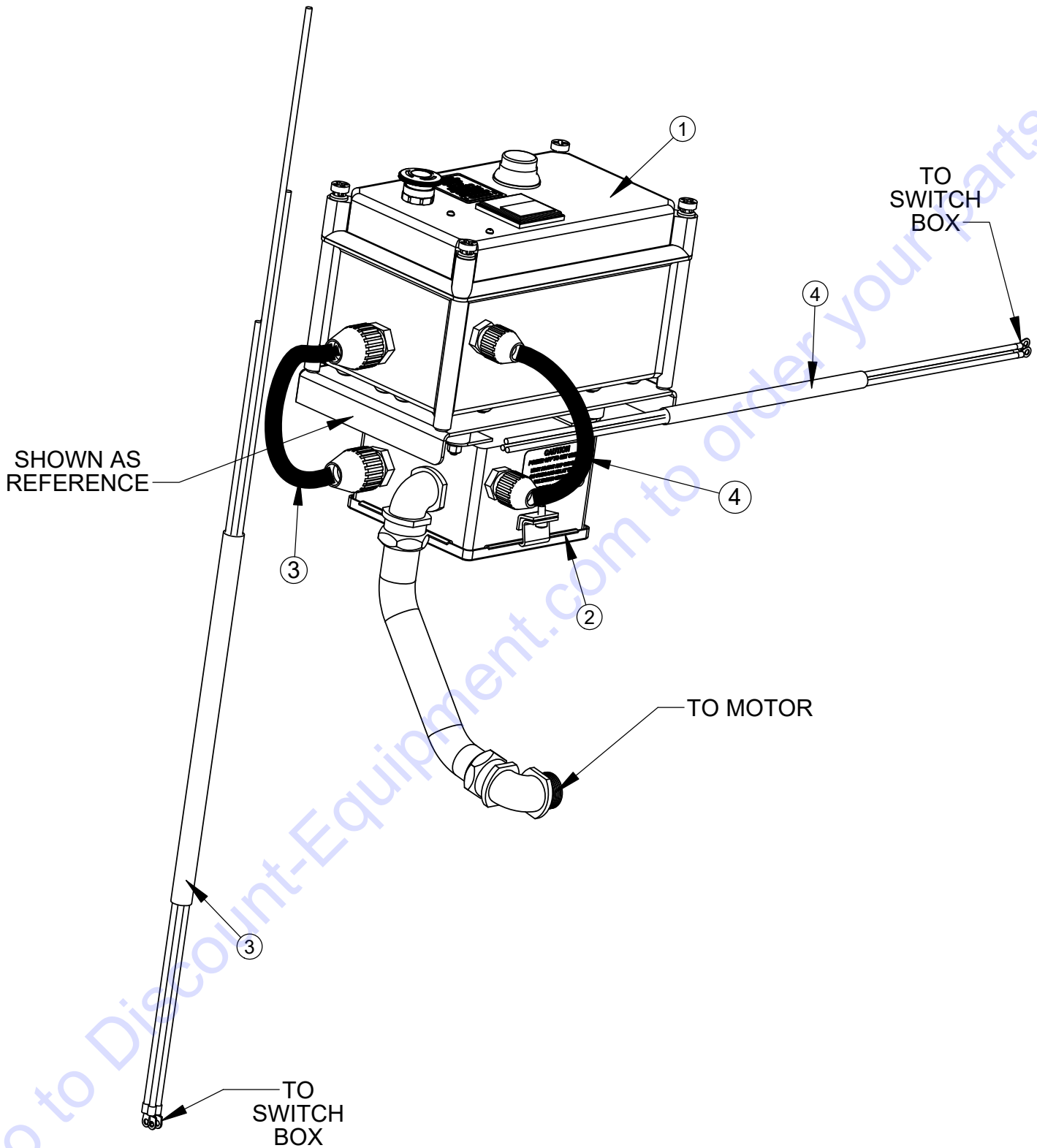


ITEM	PART NO.	QTY.	DESCRIPTION
1	6048507	1	Dual Voltage Starterbox Assembly
2	6010385	1	Dual Voltage Motor Switchbox Assembly
3	6041150	1	Cable Assy., 10 Ga., 4 Wire x 42"
4	6040317	1	Cable Assy., 12 Ga., 3 Wire x 26"

# 6049028 DUAL VOLTAGE CONTROL BOX ASSEMBLY CC1300 / CC1800

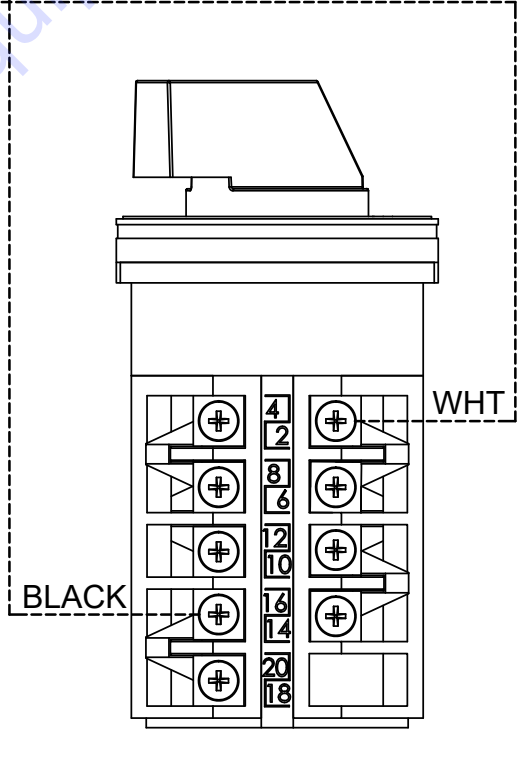
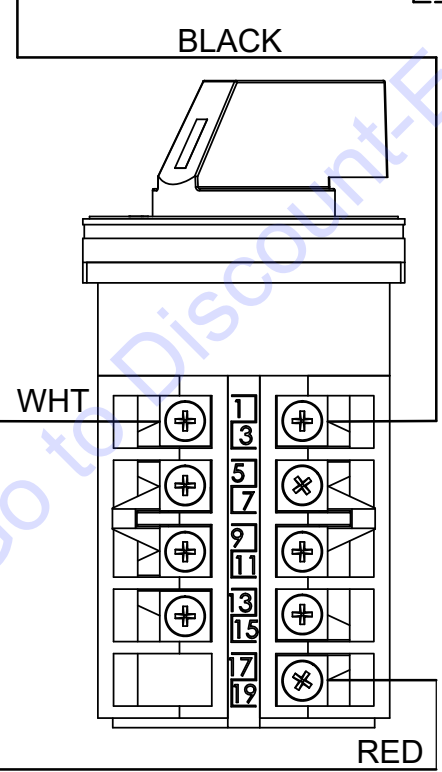
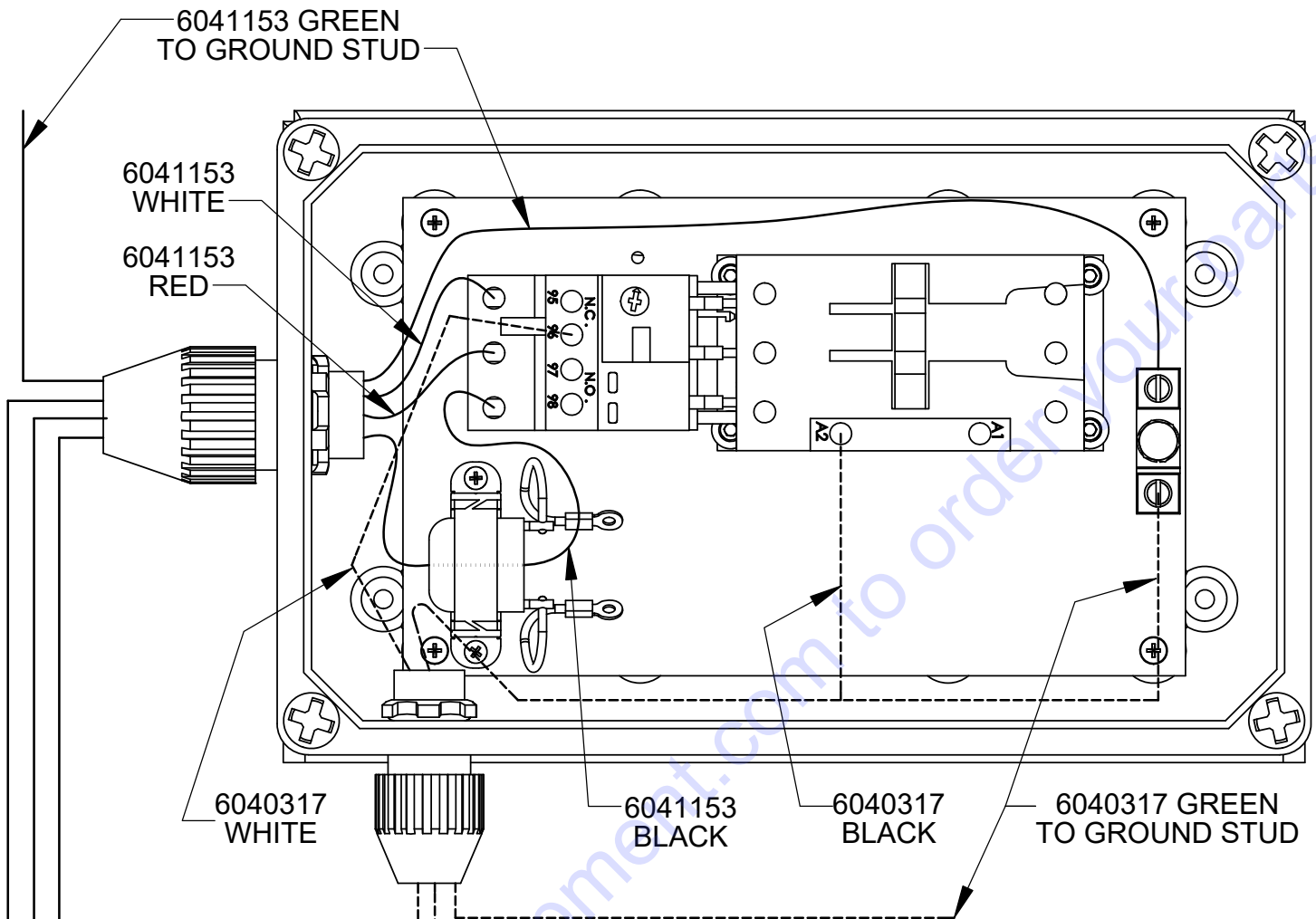


**6049063 DUAL VOLTAGE CONTROL BOX ASSEMBLY**  
**CC2500**



ITEM	PART NO.	QTY.	DESCRIPTION
1	6048507	1	Dual Voltage Starterbox Assembly
2	6010385	1	Dual Voltage Motor Switchbox Assembly
3	6041153	1	Cable Assy., 8 Ga., 4 Wire x 42"
4	6040317	1	Cable Assy., 12 Ga., 3 Wire x 26"

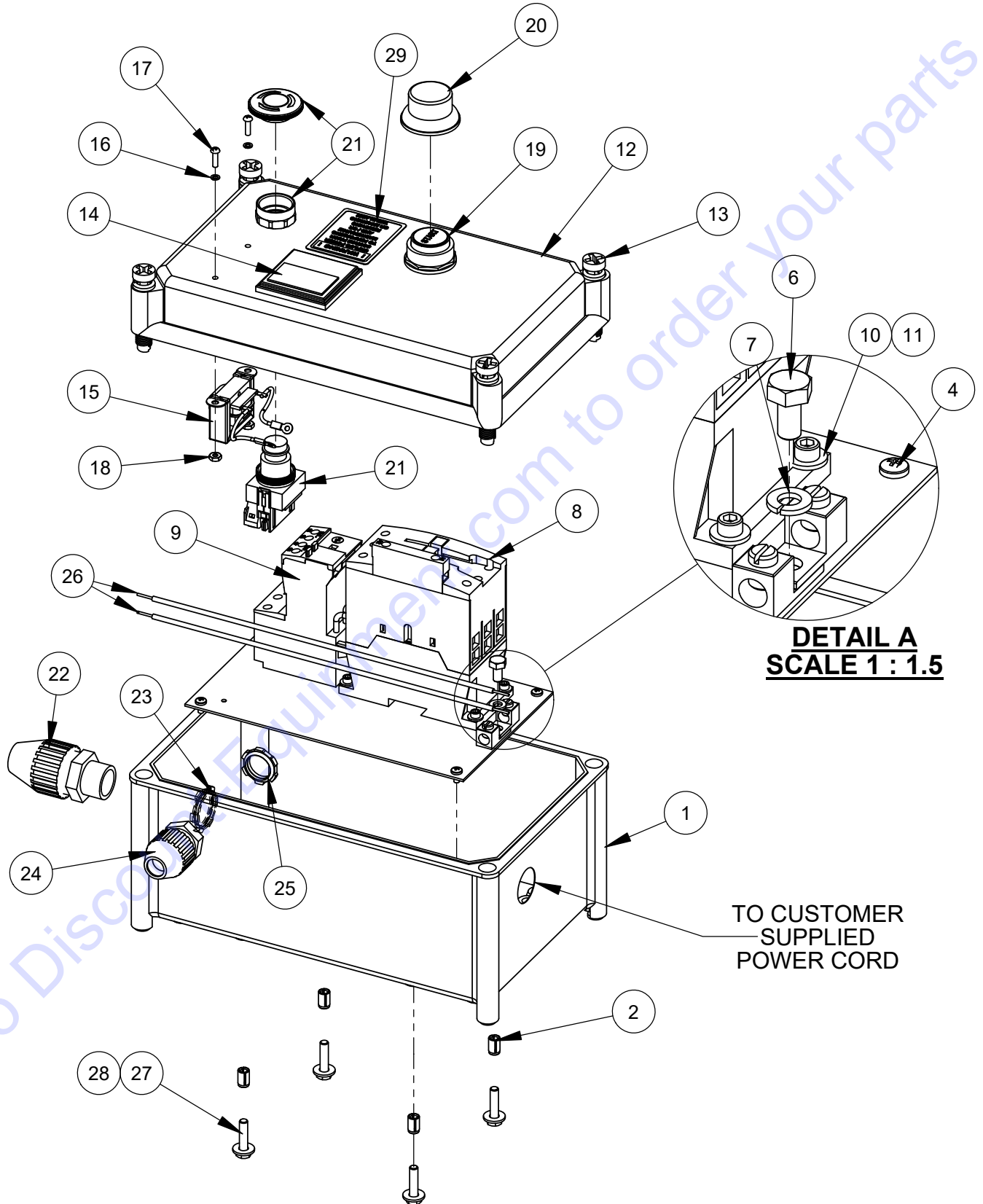
# 6049063 DUAL VOLTAGE CONTROL BOX ASSEMBLY CC2500



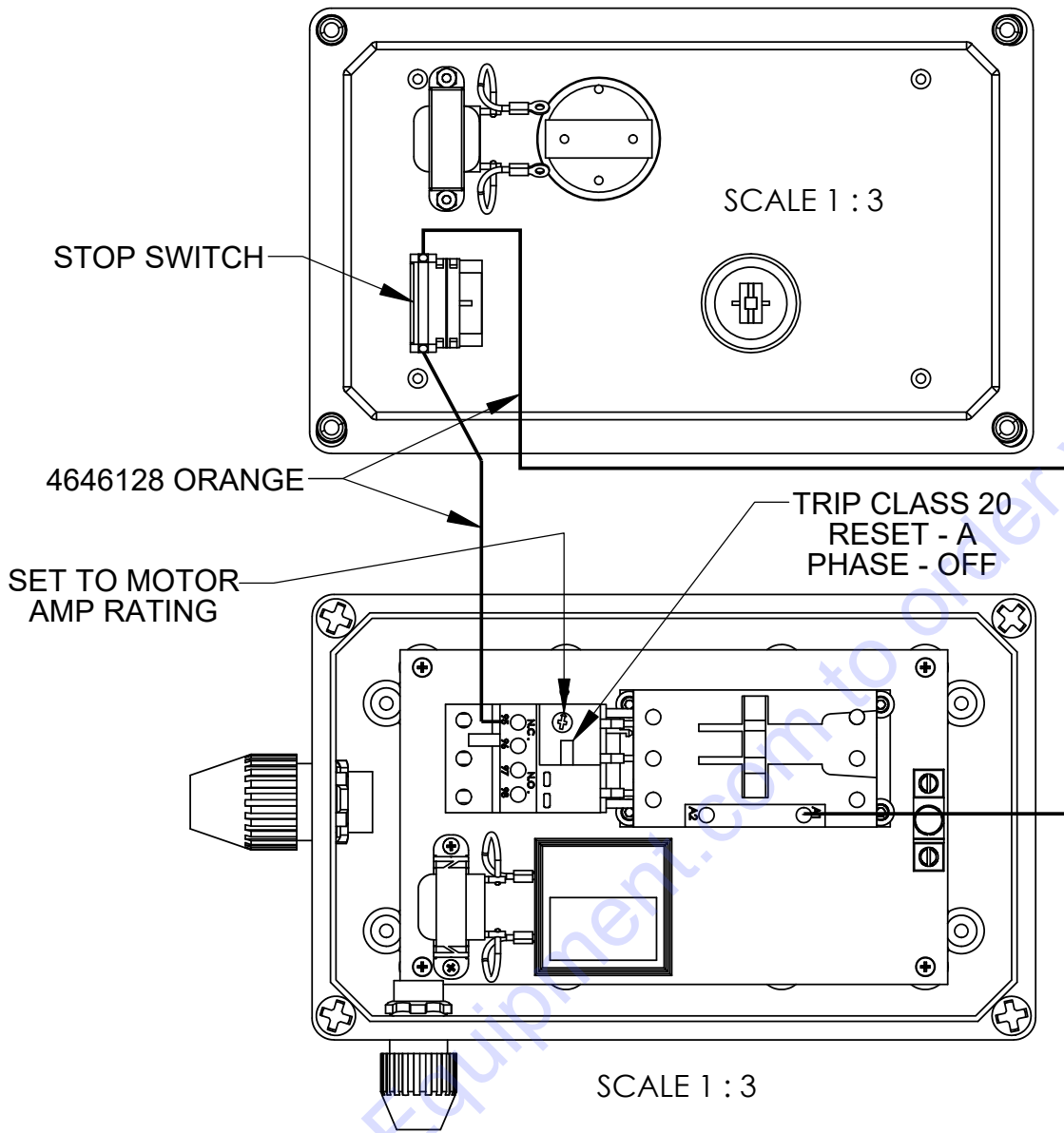
SWITCH TERMINALS TO STARTER BOX	
1	-----8 Ga. WHT
2	-----12 Ga. WHT
3	-----8 Ga. BLK
4	
5	
6	
7	
8	
9	
10	
11	
12	
13	
14	
15	
16	-----12 Ga. BLK
17	
18	
19	-----8 Ga. RED
20	



# 6048507 DUAL VOLTAGE STARTER BOX

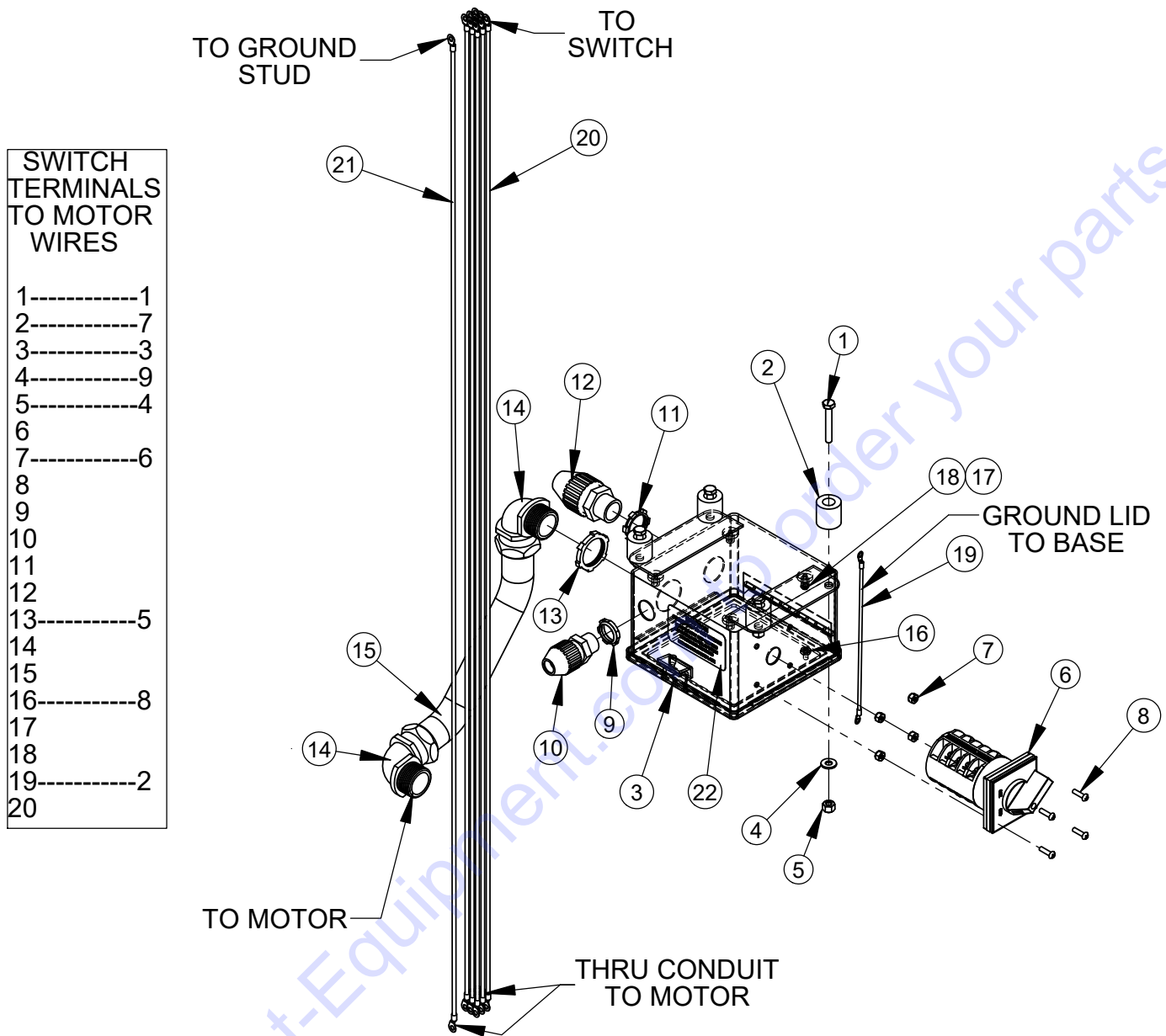


## 6048507 DUAL VOLTAGE STARTER BOX



ITEM	PART NO.	QTY.	DESCRIPTION	ITEM	PART NO.	QTY.	DESCRIPTION
1	6040300E	1	Electrical Box Base	16	2900092	2	Lock Washer, #6 Split
2	2901588	4	M6-1.0 Threaded Insert	17	2900090	2	Machine Screw, Rd. Hd., #6-32 x 1/2"
3	6040598	1	Sub-plate	18	2900091	2	Hex Nut, #6-32
4	2900676	4	Machine Screw, Pan Hd., M4-0.7 x 8mm	19	4600166	1	Start Switch
5	2800315	2	Grounding Lug	20	2800222	1	Clear Protective Boot
6	2901891	1	Cap Screw, Hex Hd., 1/4-28 x 1/2"	21	2801636	1	E-Stop Switch, 600V, NC
7	2900024	1	Lock Washer, 1/4" Split	22	2801034	1	Cord Connector, 3/4", .66-.78" Cord, Thermoplastic
8	2801704	1	Contactor, 220-240V (includes coil)	23	2800050	1	Lock Nut, 3/4" Sealing
9	2801699	1	Overload Relay, 9-45 AMP	24	2801631	1	Cord Connector, 1/2", .40-.56" Cord, Thermoplastic
10	2901437	4	Flat Washer, #10	25	2800487	1	Locknut, 1/2" Sealing
11	2901827	4	Cap Screw, Soc. Hd., #8-32 x 5/8"	26	4646128	2	Wire, 14 Gage, Orange, 12"
12	6048375	1	Cover, Electric Box, 3 Hole	27	2900311	4	Cap Screw, Hex Hd., M6-1.0 x 25mm
13	2701414	4	Fastener, Electrical Box Top	28	2900009	4	Flat Washer, 1/4" SAE
14	2800253	1	Amp Meter w/ Bracket, 0-40 AC	29	1801075	1	Label, Unplug Power
15	2800085	1	AC Current Transformer				

## 6010385 Dual Voltage Motor Switchbox Assembly



ITEM	PART NO.	QTY.	DESCRIPTION
1	2900392	4	Cap Screw, Hex Hd., 1/4-20 x 1-3/4"
2	6030126	4	Spacer, 1"
3	6010384	1	Enclosure, Steel, w/ Holes
4	2900009	4	Flat Washer, 1/4" SAE
5	2900010	4	Lock Nut, 1/4-20 Nylon
6	2800420	1	Switch, 230V to 460V
7	2900115	4	Lock Nut, #8-32 Nylon
8	2900533	4	Machine Screw, Rd. Hd., #8-32 x 5/8"
9	2800487	1	Locknut, 1/2" Sealing
10	2801631	1	Cord Connector, 1/2", .40-.56" Cord, Thermoplastic
11	2800050	1	Lock Nut, 3/4" Sealing

ITEM	PART NO.	QTY.	DESCRIPTION
12	2801034	1	Cord Connector, 3/4", .66-.78" Cord, Thermoplastic
13	2800193	1	Lock Nut, 1"
14	2800312	2	Connector, 1" Sealtite Elbow
15	6040318	1	Conduit Sealtite 1" x 34"
16	2900188	1	Hex Nut, #10-32
17	2900708	1	Machine Screw, Rd. Hd., #10-32 x 1/2"
18	2900038	1	Lock Washer, #10 Split
19	6011549	1	Wire Assy., 16 G., Grn., 8"
20	6040320	9	Wire Assy., 12 Ga., Red, x 48.6"
21	6040319	1	Wire Assy., 12 Ga., Grn., x 48.6"
22	1800978	1	Label, Dual Voltage Box

## **EQUIPMENT AND PARTS WARRANTY**

Discount-equipment warrants all equipment sold by it against defects in workmanship or materials for a period of one (1) year from the date of shipment to Customer.

The responsibility of Discount-equipment under this Warranty is limited to replacement or repair of defective parts, of such parts as shall appear to us upon inspection at such parts, to have been defective in material or workmanship, with expense for transportation and labor borne by Customer.

In no event shall Discount-equipment be liable for consequential or incidental damages arising out of the failure of any Product to operate properly.

Integral units such as engines, electric motors, batteries, transmissions, etc., are excluded from this Warranty and are subject to the prime manufacturer's warranty.

**THIS WARRANTY IS IN LIEU OF ALL OTHER WARRANTIES,  
EXPRESSED OR IMPLIED, AND ALL SUCH OTHER WARRANTIES ARE  
HEREBY DISCLAIMED.**



# PARTS FINDER

**Search Website  
by Part Number**



**Search Manual  
Library For Parts  
Manual & Lookup Part  
Numbers – Purchase  
or Request Quote**

**Search Manuals**

Enter your information to help us find the right parts manual for your machine.

\* Brand:

\* Model:

\* Serial:

\* Part Number:

SEARCH

**Can't Find Part or  
Manual? Request Help  
by Manufacturer,  
Model & Description**

**Parts Order Form**

Please fill in the following information to help us find the right part for your machine.

Manufacturer:	<input type="text"/>
Model:	<input type="text"/>
Description:	<input type="text"/>
Part Number:	<input type="text"/>
Quantity:	<input type="text"/>
Notes:	<input type="text"/>

Submit

Discount-Equipment.com is your online resource for quality parts & equipment.

Florida: **561-964-4949** Outside Florida TOLL FREE: **877-690-3101**

**Need parts?**

Click on this link: <http://www.discount-equipment.com/category/5443-parts/> and choose one of the options to help get the right parts and equipment you are looking for. Please have the machine model and serial number available in order to help us get you the correct parts. If you don't find the part on the website or on one of the online manuals, please fill out the request form and one of our experienced staff members will get back to you with a quote for the right part that your machine needs.

We sell worldwide for the brands: Genie, Terex, JLG, MultiQuip, Mikasa, Essick, Whiteman, Mayco, Toro Stone, Diamond Products, Generac Magnum, Airman, Haulotte, Barreto, Power Blanket, Nifty Lift, Atlas Copco, Chicago Pneumatic, Allmand, Miller Curber, Skyjack, Lull, Skytrak, Tsurumi, Husquvarna Target, Stow, Wacker, Sakai, Mi-T-M, Sullair, Basic, Dynapac, MBW, Weber, Bartell, Bennar Newman, Haulotte, Ditch Runner, Menegotti, Morrison, Contec, Buddy, Crown, Edco, Wyco, Bomag, Laymor, EZ Trench, Bil-Jax, F.S. Curtis, Gehl Pavers, Heli, Honda, ICS/PowerGrit, IHI, Partner, Imer, Clipper, MMD, Koshin, Rice, CH&E, General Equipment, Amida, Coleman, NAC, Gradall, Square Shooter, Kent, Stanley, Tamco, Toku, Hatz, Kohler, Robin, Wisconsin, Northrock, Oztec, Toker TK, Rol-Air, APT, Wylie, Ingersoll Rand / Doosan, Innovatech, Con X, Ammann, Mecalac, Makinex, Smith Surface Prep, Small Line, Wanco, Yanmar