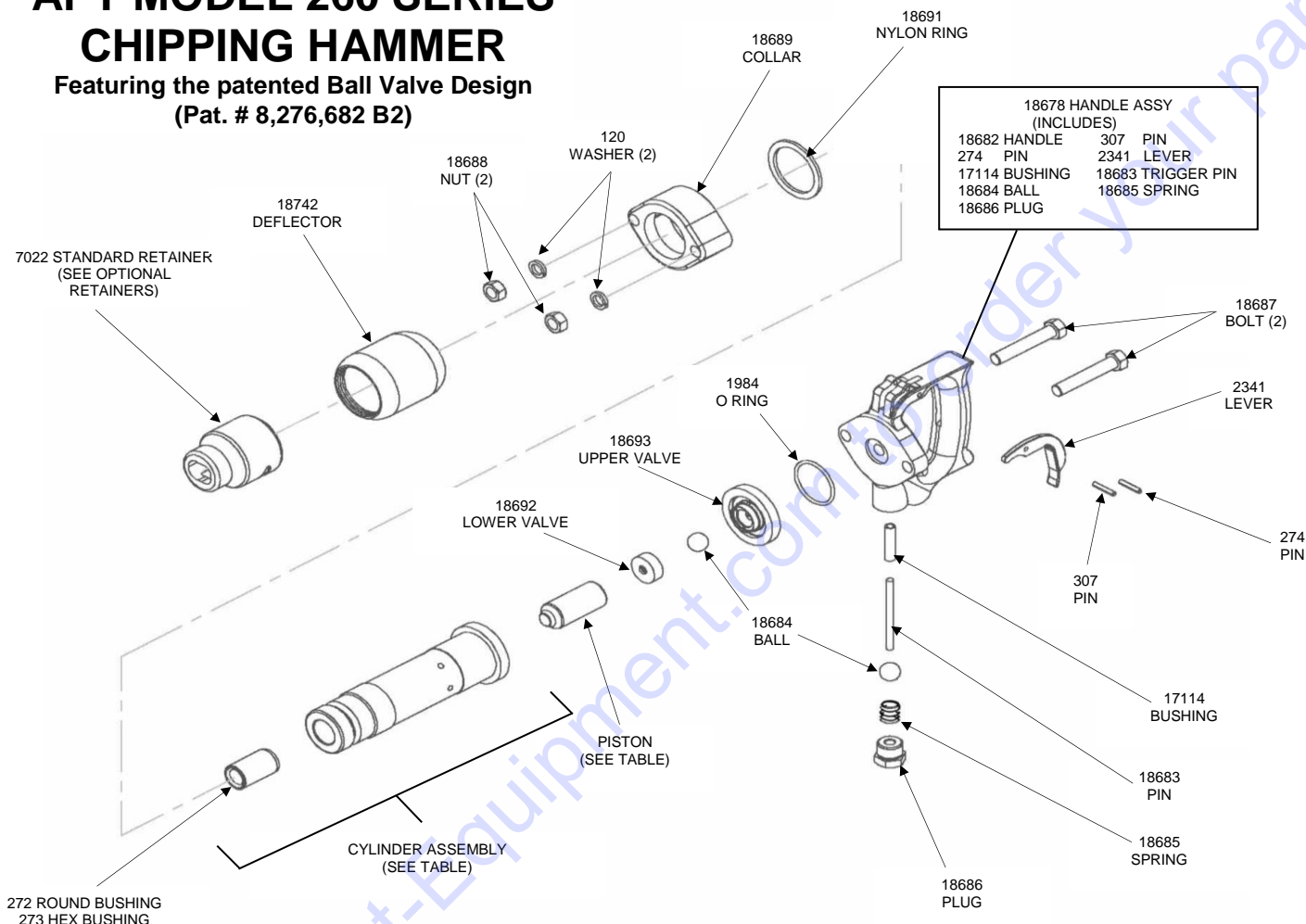




American Pneumatic Tools

APT MODEL 260 SERIES CHIPPING HAMMER

Featuring the patented Ball Valve Design
(Pat. # 8,276,682 B2)



2 BOLT CHIPPING HAMMER

MODEL	CYLINDER ASSEMBLY	PISTON
M263, 3" STROKE, ROUND BUSHING	18673	1534
M263, 3" STROKE, HEX BUSHING	18676	1534
M264, 4" STROKE, ROUND BUSHING	18674	703
M264, 4" STROKE, HEX BUSHING	18677	703

For assistance in any sales, technical, maintenance or repair questions, please contact Discount-equipment



TDS-1059 Rev B

PARTS FINDER

**Search Website
by Part Number**



**Search Manual
Library For Parts
Manual & Lookup Part
Numbers – Purchase
or Request Quote**

Search Manuals

Enter part number or description to find parts manual or lookup part numbers.

* Part #

* Model

Serial

Part Number

Comments

**Can't Find Part or
Manual? Request Help
by Manufacturer,
Model & Description**

Parts Order Form

Please fill in the following information:

Manufacturer:

Model:

Description:

Part Number:

Quantity:

Unit Price:

Total Price:

Customer Name:

Address:

City:

State:

Zip:

Phone:

Fax:

Email:

Comments:

Discount-Equipment.com is your online resource for quality parts & equipment.

Florida: **561-964-4949** Outside Florida TOLL FREE: **877-690-3101**

Need parts?

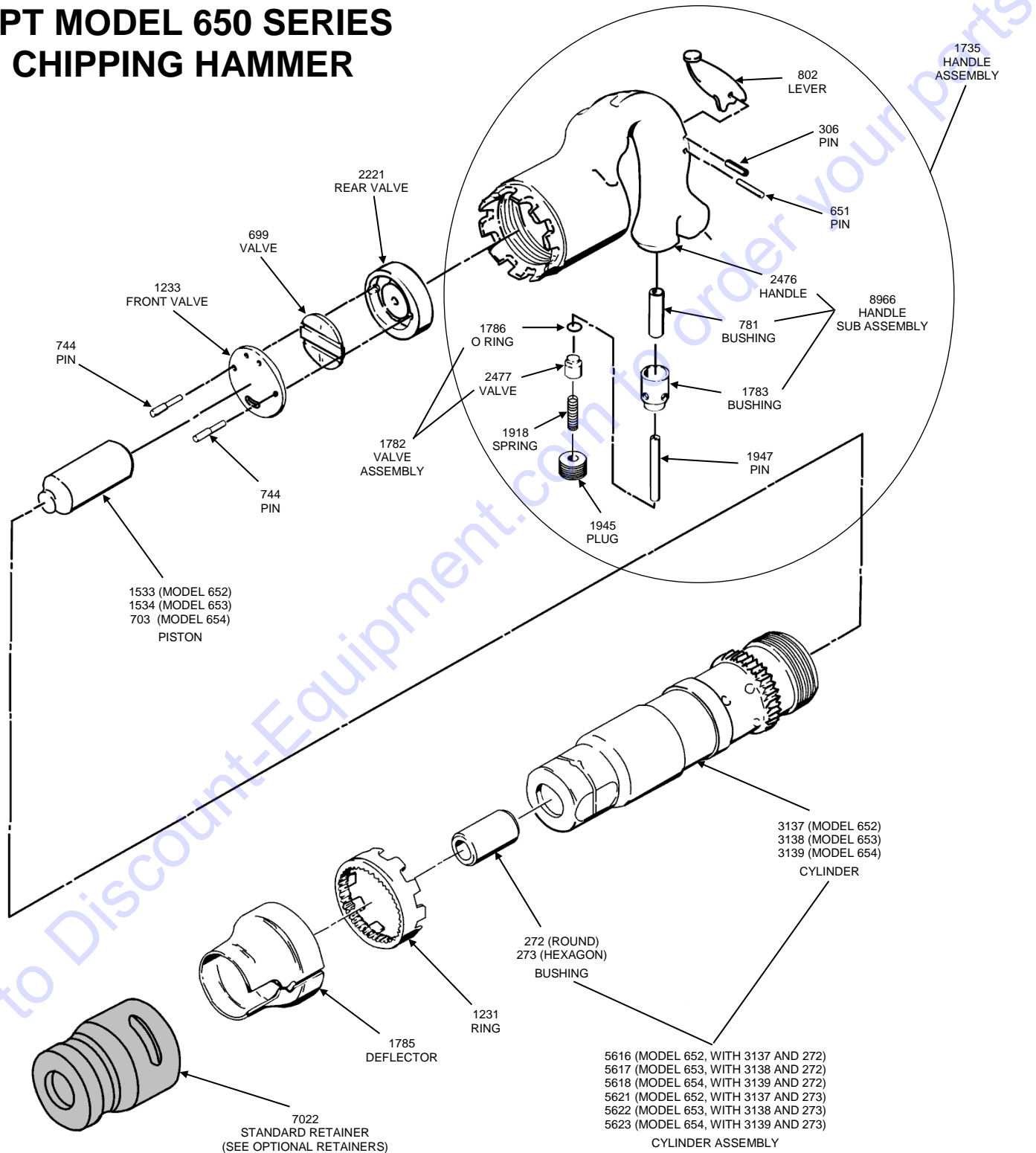
Click on this link: <http://www.discount-equipment.com/category/5443-parts/> and choose one of the options to help get the right parts and equipment you are looking for. Please have the machine model and serial number available in order to help us get you the correct parts. If you don't find the part on the website or on one of the online manuals, please fill out the request form and one of our experienced staff members will get back to you with a quote for the right part that your machine needs.

We sell worldwide for the brands: Genie, Terex, JLG, MultiQuip, Mikasa, Essick, Whiteman, Mayco, Toro Stone, Diamond Products, Generac Magnum, Airman, Haulotte, Barreto, Power Blanket, Nifty Lift, Atlas Copco, Chicago Pneumatic, Allmand, Miller Curber, Skyjack, Lull, Skytrak, Tsurumi, Husquvarna Target, Stow, Wacker, Sakai, Mi-T-M, Sullair, Basic, Dynapac, MBW, Weber, Bartell, Bennar Newman, Haulotte, Ditch Runner, Menegotti, Morrison, Contec, Buddy, Crown, Edco, Wyco, Bomag, Laymor, EZ Trench, Bil-Jax, F.S. Curtis, Gehl Pavers, Heli, Honda, ICS/PowerGrit, IHI, Partner, Imer, Clipper, MMD, Koshin, Rice, CH&E, General Equipment, Amida, Coleman, NAC, Gradall, Square Shooter, Kent, Stanley, Tamco, Toku, Hatz, Kohler, Robin, Wisconsin, Northrock, Oztec, Toker TK, Rol-Air, APT, Wylie, Ingersoll Rand / Doosan, Innovatech, Con X, Ammann, Mecalac, Makinex, Smith Surface Prep, Small Line, Wanco, Yanmar

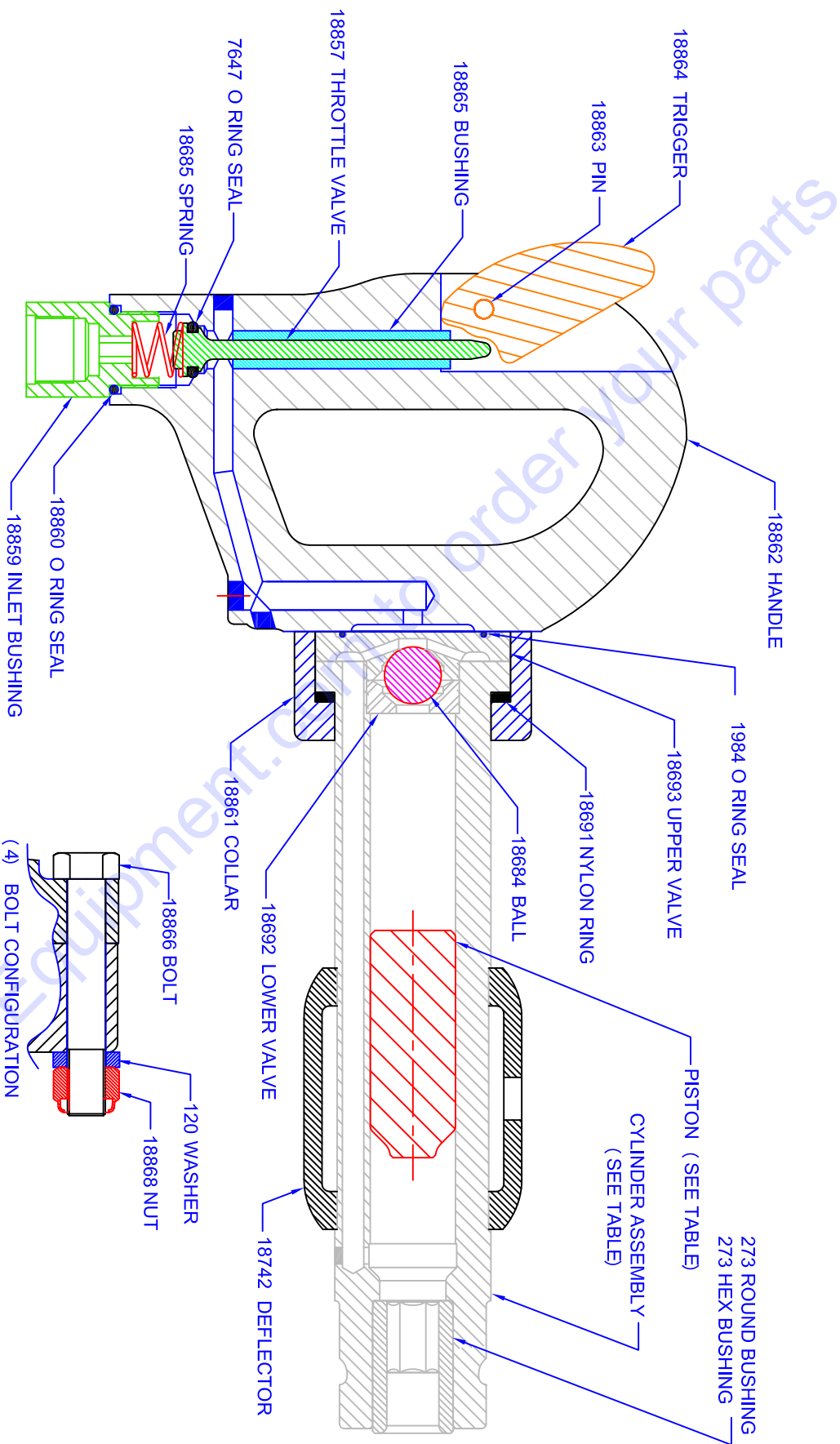


American Pneumatic Tools

APT MODEL 650 SERIES CHIPPING HAMMER



For assistance in any sales, technical, maintenance or repair questions, please contact Discount-equipment



MODEL	CYLINDER ASSEMBLY #	PISTON #
3" STROKE - .680" ROUND BUSHING	18673	1534
3" STROKE - .580" HEX BUSHING	18676	1534
4" STROKE - .680" ROUND BUSHING	18674	703
4" STROKE - .580" HEX BUSHING	18677	703

ASSEMBLY PART NUMBERS (ALL MODELS)

HANDLE ASSEMBLY-COMPLETE	18854 (18865, 18863, 18864, 18855, 18856 & 18858)
HANDLE SUB ASSEMBLY	18855 (18862 & 18865)
THROTTLE VALVE ASSEMBLY	18856 (18857 & 7647)
INLET BUSHING ASSEMBLY	18858 (18859 & 18860)

M43R, M43H, M44R, M44H
4 BOLT CHIPPING HAMMERS

3" STROKE - .680" ROUND BUSHING	18850
3" STROKE - .580" HEX BUSHING	18851
4" STROKE - .680" ROUND BUSHING	18852
4" STROKE - .580" HEX BUSHING	18853

REQUIRED RETAINER SYSTEM - 3 OPTIONS

9431 STANDARD RETAINER (7022) WITH 1941 SPRING

5550 QUICK CHANGE RETAINER WITH 1941 SPRING

18290 QUICK CHANGE, BOLT ON RETAINER

PARTS FINDER

**Search Website
by Part Number**



**Search Manual
Library For Parts
Manual & Lookup Part
Numbers – Purchase
or Request Quote**

Search Manuals

Enter part number or description to find parts manual or lookup part numbers

* Part #

* Model

Serial

Part Number

Comments

**Can't Find Part or
Manual? Request Help
by Manufacturer,
Model & Description**

Parts Order Form

Please fill in the following information:

Manufacturer:

Model:

Description:

Quantity:

Part Number:

Part Name:

Part Description:

Part Location:

Part Condition:

Part Status:

Part Notes:

Discount-Equipment.com is your online resource for quality parts & equipment.

Florida: **561-964-4949** Outside Florida TOLL FREE: **877-690-3101**

Need parts?

Click on this link: <http://www.discount-equipment.com/category/5443-parts/> and choose one of the options to help get the right parts and equipment you are looking for. Please have the machine model and serial number available in order to help us get you the correct parts. If you don't find the part on the website or on one of the online manuals, please fill out the request form and one of our experienced staff members will get back to you with a quote for the right part that your machine needs.

We sell worldwide for the brands: Genie, Terex, JLG, MultiQuip, Mikasa, Essick, Whiteman, Mayco, Toro Stone, Diamond Products, Generac Magnum, Airman, Haulotte, Barreto, Power Blanket, Nifty Lift, Atlas Copco, Chicago Pneumatic, Allmand, Miller Curber, Skyjack, Lull, Skytrak, Tsurumi, Husquvarna Target, Stow, Wacker, Sakai, Mi-T-M, Sullair, Basic, Dynapac, MBW, Weber, Bartell, Bennar Newman, Haulotte, Ditch Runner, Menegotti, Morrison, Contec, Buddy, Crown, Edco, Wyco, Bomag, Laymor, EZ Trench, Bil-Jax, F.S. Curtis, Gehl Pavers, Heli, Honda, ICS/PowerGrit, IHI, Partner, Imer, Clipper, MMD, Koshin, Rice, CH&E, General Equipment, Amida, Coleman, NAC, Gradall, Square Shooter, Kent, Stanley, Tamco, Toku, Hatz, Kohler, Robin, Wisconsin, Northrock, Oztec, Toker TK, Rol-Air, APT, Wylie, Ingersoll Rand / Doosan, Innovatech, Con X, Ammann, Mecalac, Makinex, Smith Surface Prep, Small Line, Wanco, Yanmar