



PARTS BREAKDOWN FOR MODEL ST-312

RICE HYDRO, INC.

| PART NUMBER.. | DESCRIPTION.. | QTY REQ'D |
|---------------|-------------------------|--------------|
| UD04-0006.09 | BEARING | 1 |
| UD04-0007.18 | SEAL | 3 |
| UD02-0007.24 | SEAL | 1 |
| UD04-0009.09 | RETAINER CLIP | 1 |
| UD04-0014.20 | PLUNGER ROD P SERIES | 3 |
| UD04-0023.22 | SUPPORT RING | 1 |
| UD04-0031.84 | CRANKSHAFT | 1 |
| UD04-0103.41 | CONNECTING ROD P SERIES | 3 |
| UD04-0208.70 | BEARING COVER | 1 |
| UD04-0208.72 | BACK COVER P SERIES | 1 |
| UD04-0209.56 | CRANKCASE P SERIES | 1 |
| UD04-0214.21 | BEARING | 1 |
| UD04-0301.42 | SLINGER RING | 1 |
| UD04-0303.18 | PLUNGER NUT | 1 |
| UD04-0517.07 | FLANGE P SERIES GAS | 1 |
| UD04-0602.76 | GASKET | 1 |
| UD02-0605.09 | GASKET | 2 |
| UD04-0605.33 | PLUNGER WASHER | 1 |
| UD04-0605.49 | WASHER | 1 |
| UD04-1101.A2 | O-RING | 6 |
| UD04-1101.A3 | VALVE O-RING | 6 |
| UD04-1101.A4 | O-RING | 1 |
| UD04-1101.A6 | O-RING | 1 |
| UD04-1101.A7 | O-RING | 1 |
| UD04-1205.35 | PLUNGER 15MM | 3 |
| UD04-1212.10 | END PLATE | 1 |
| UD04-1411.01 | WASHER P - PUMP | 8 |
| UD04-1502.15 | CONNECTING ROD PIN | 3 |
| UD04-1506.26 | SNAP RING | 1 |
| UD04-1603.64 | DISCHARGE PLUG 3/8 | 2 |
| UD02-1603.67 | DRAIN PLUG | 1 |
| UD04-1603.69 | SIGHT GLASS | 1 |
| UD04-1603.72 | VALVE CAP P SERIES | 6 |
| UD04-1604.59 | MANIFOLD P SERIES 15MM | 1 |
| UD04-1805.19 | BOLT | 4 |
| UD04-1805.20 | BOLT | 8 |
| UD04-1805.39 | BOLT | 8 |
| UD04-6058.26 | OIL VENT CAP P SERIES | 1 |

MISC PARTS..

| | | |
|----------------------|----------------------------------|---|
| HONDA-GX200UT2-QX2 | 196 CC FLANGE MOUNT HONDA ENGINE | 1 |
| SPEC-PNL3.0/20-T | TRIPLEX PLUNGER PUMP | 1 |
| VALVE-RELIEF-2000PSI | 200-2000 PSI PRESSURE REGULATOR | 1 |
| GAUGE-2000 | 0-2000 PSI GAUGE | 1 |
| BALLVALVE-3/4 | 3/4" BALLVALVE | 1 |
| BALLVALVE-3/8HP | 3/8" HIGH PRESSURE BALLVALVE | 1 |
| CHECKVALVE-1/2M | 1/2" MXM INLINE CHECKVALVE | 1 |
| LINESTRAINER-3/4-80 | 80 MESH LINESTRAINER ASSEMBLY | 1 |
| HYD-VALVE-SHORE | HYDRAULIC VALVE | 1 |
| TANK-B200-LD | TANK FOR SHORING UNIT | 1 |
| TANK-CAP-ASSY | LID, FLANGE, SCREWS & CHAIN | 1 |
| QC-BODY-1/4-2WAY | QUICK CONNECT ENDS OF HOSE | 2 |
| QC-PLUG-1/4-2WAY | QUICK CONNECT ON UNIT | 1 |
| HOSE-SHORING-ST312 | 1/4" 50 FOOT OUTLET HOSE | 1 |
| WHEEL | NO FLAT TIRES | 4 |
| LABEL-KIT-ST312 | INSTRUCTION AND CAUTION STICKERS | 1 |

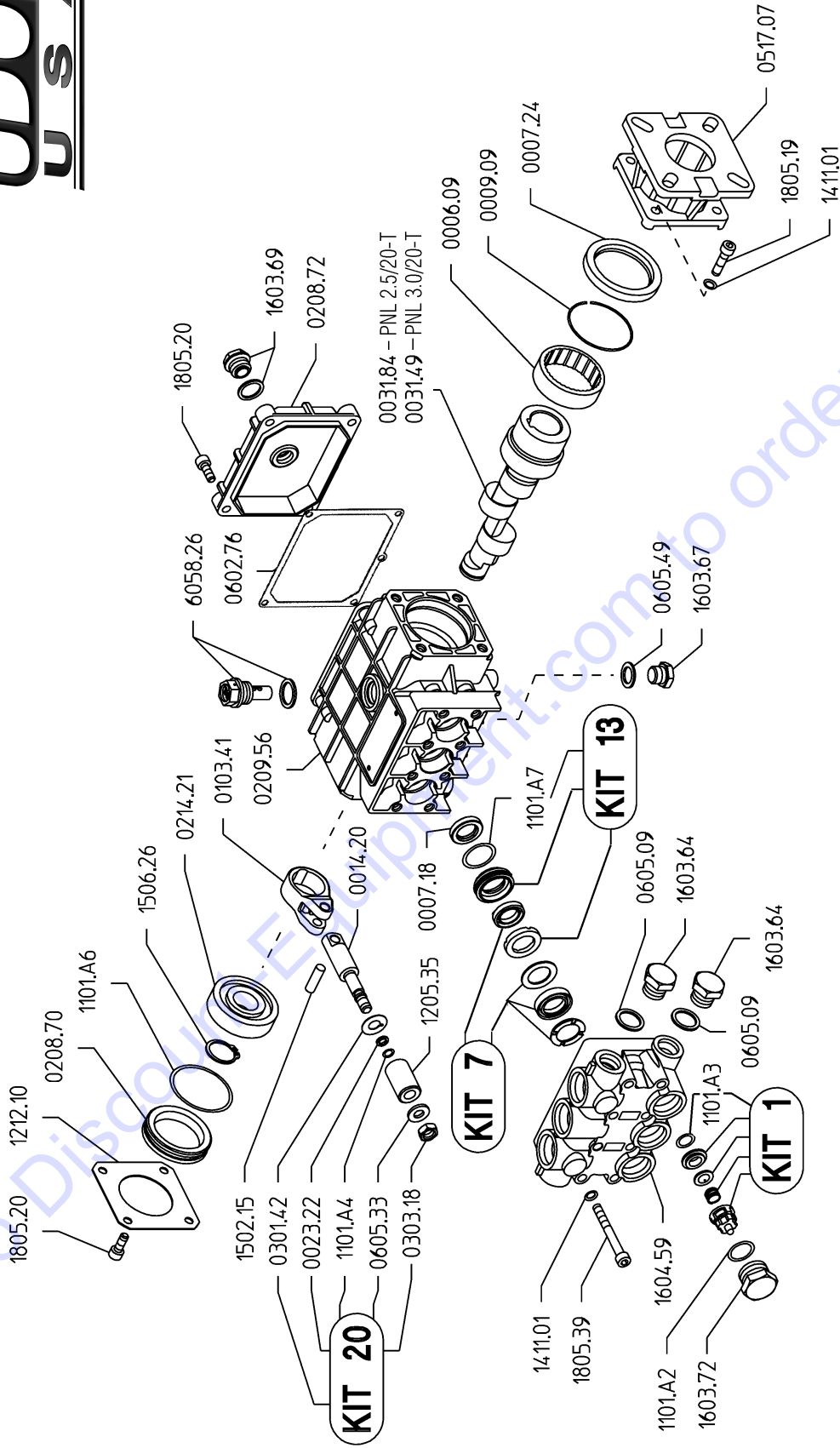
KITS..

****KITS ARE ALL INCLUSIVE****

| | | |
|---------------|---------------------------|---|
| UD04-KIT-UD1 | VALVE KIT P-SERIES | 1 |
| UD04-KIT-UD7 | SEAL KIT P 15MM | 1 |
| UD04-KIT-UD13 | BRASS KIT P 15MM | 1 |
| UD04-KIT-UD20 | PLUNGER O-RING KIT P 15MM | 1 |

Revised 10-1-2005

PNL 2.5/20-T & PNL 3.0/20-T



PNL 2.5/20-T & PNL 3.0/20-T Quick Reference

| | | | |
|------------------|------------------------------|------------------------|--------------|
| Max. Flow | PNL 2.5/20-T2.5 GPM | Valve Kit | 04-KIT UD-1 |
| | PNL 3.0/20-T3.0 GPM | Seal Kit..... | 04-KIT UD-7 |
| Maximum Pressure |2000 PSI | Brass Kit | 04-KIT UD-13 |
| Rated Pump Speed |3400 RPM | Plunger Bolt Kit | 04-KIT UD-20 |
| Oil Capacity |12 oz. UDOR LUBE | Plunger Part # | 04-1205.35 |
| | or SAE 30W Non-Detergent Oil | Plunger Diameter..... | 15 MM |

PNL 2.5/20-T
PNL 3.0/20-T

SMC Model 555 Balanced Pressure Regulator

FEATURES:

Simple construction. Minimum number of parts to wear. Seals, piston, and seat assembly easily replaced. Ideal for self service car wash installations, particularly those with trigger gun and weep systems also carpet cleaning machine and RO application. Can be used on multi-outlet systems with varying size nozzles. Working pressure is maintained in the system regardless of what percent of the liquid is bypassed. Off the line mounting - No pressure loss from valve restriction - Capacity to 10 G.P.M. In line mounting - Capacity to 7 G.P.M. Does not pulse or surge. Smooth gentle discharge Model 555 also is available in partial or all stainless steel.

INSTRUCTIONS:

Mount **off-line** unit in a tee, off the discharge line or manifold, see Fig. #1. Mount **in line** unit, in-line - see Fig. #2.

Ideal for use in car wash or pressure wash application where a weep gun is used or bypass can be returned to a supply tank. When used on a pressure wash system where bypass is piped back to inlet and standard shut off gun is used it is advisable to install a thermal relief valve to insure that heat build up in the pump and short loop does not exceed a fixed temperature (160°-180°). Note: This can done only if pump is pressure fed or has net positive suction head from gravity feed.

To increase pressure, turn adjusting cap clockwise. To reduce pressure turn adjusting cap counter-clockwise.

The SMC regulator is not preset for pressure. Start the pump with the spring in a relaxed position (7 threads showing). With the discharge gun open check gauge pressure as you turn the adjusting cap clockwise to increase the pressure to the desired operating range (2000 PSI max.). There may be some by-pass if the nozzle is undersize. Do not adjust above the working pressure as this will unnecessarily increase pressure when the gun is shut-off.

If used in a system that is equipped with more than one outlet gun set the valve pressure with one outlet gun open and again with all outlet guns open to verify proper setting.

If there is extreme pulsating in the system (single or two cylinder pump or a pump with mechanical valves) there may be a light trickle at the bypass. The addition of a pulsation damper you can set the valve slightly higher than normal to stop the trickle (there will be a slightly higher pressure rise than normal with all outlet guns shut-off).

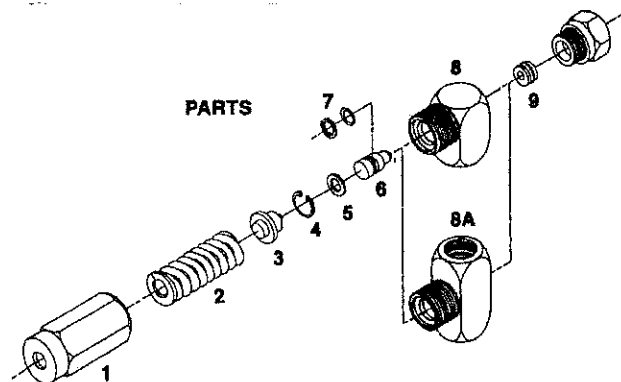
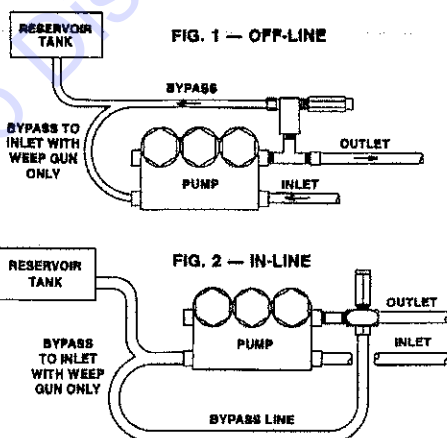
NOTE: Do not use Teflon Tape on threads. Please use a thread locker for best results. Teflon Tape ends up in piston bore causing regulator to be ineffective.

PARTS LIST:

- | | | |
|-----|---------|--|
| 1. | 5550040 | CAP |
| 2. | 5550120 | Standard Spring, 200-2000 PSI |
| | 5550130 | Medium Spring, 100-900 PSI |
| | 5550140 | Low Spring, 50-500 PSI |
| 3. | 5550390 | Thrust Plate |
| 4. | 8200260 | Ring Retainer |
| 5. | 5550370 | Brass Washer, Piston Retainer |
| 6. | 5550230 | Piston 316SS |
| 7. | 5550490 | Seal Kit - Buna-N w/Teflon |
| | 5551690 | Seal Kit - Ethylene Propylene w/Teflon |
| | 5551990 | Seal Kit - Fluroelastomer w/Teflon |
| 8. | 5550330 | Off Line Body Assembly |
| 8A. | 5550350 | In Line Body Assembly |
| 9. | 5550590 | Kit Seat w/Buna-N O-Ring |
| | 5552090 | Kit Seat w/Ethylene Propylene O-Ring |
| | 5552190 | Kit Seal w/Fluroelastomer O-Ring |

SPECIFICATIONS:

- All Body Parts — Brass
- Piston and Seat — Hardened Stainless Steel
- O-Rings — Buna-N, Ethylene Propylene, or Viton
- Piston Seal — Buna-N, Ethylene Propylene, or Viton
- Seal Backup — Filled Teflon
- Adjusting Spring — Chrome Vanadium
- Porting — 3/8 F. N. P. T. Inlet (All Ports)
- Temperature Range — to 180° F
- Volume Range —
 - Off line Mount to 10 GPM
 - In Line Mount to 7 GPM
- Pressure Range —
 - Standard Spring, 200-2000 PSI
 - Medium Spring, 100-900 PSI
 - Low Spring, 50-500 PSI
- Weight — 12 oz.



PARTS FINDER

**Search Website
by Part Number**



**Search Manual
Library For Parts
Manual & Lookup Part
Numbers – Purchase
or Request Quote**

Search Manuals

Enter your information to search for a manual or to purchase a manual or parts.

* Brand:

* Model:

* Serial:

* Part Number:

SEARCH

**Can't Find Part or
Manual? Request Help
by Manufacturer,
Model & Description**

Parts Order Form

Please fill in the following information:

Manufacturer:

Model:

Description:

Quantity:

Part Number:

Part Name:

Part Description:

Part Category:

Part Location:

Part Status:

Part Condition:

Part Material:

Part Color:

Part Weight:

Part Dimensions:

Part Price:

Part Notes:

Submit

Discount-Equipment.com is your online resource for quality parts & equipment.

Florida: **561-964-4949** Outside Florida TOLL FREE: **877-690-3101**

Need parts?

Click on this link: <http://www.discount-equipment.com/category/5443-parts/> and choose one of the options to help get the right parts and equipment you are looking for. Please have the machine model and serial number available in order to help us get you the correct parts. If you don't find the part on the website or on one of the online manuals, please fill out the request form and one of our experienced staff members will get back to you with a quote for the right part that your machine needs.

We sell worldwide for the brands: Genie, Terex, JLG, MultiQuip, Mikasa, Essick, Whiteman, Mayco, Toro Stone, Diamond Products, Generac Magnum, Airman, Haulotte, Barreto, Power Blanket, Nifty Lift, Atlas Copco, Chicago Pneumatic, Allmand, Miller Curber, Skyjack, Lull, Skytrak, Tsurumi, Husquvarna Target, Stow, Wacker, Sakai, Mi-T-M, Sullair, Basic, Dynapac, MBW, Weber, Bartell, Bennar Newman, Haulotte, Ditch Runner, Menegotti, Morrison, Contec, Buddy, Crown, Edco, Wyco, Bomag, Laymor, EZ Trench, Bil-Jax, F.S. Curtis, Gehl Pavers, Heli, Honda, ICS/PowerGrit, IHI, Partner, Imer, Clipper, MMD, Koshin, Rice, CH&E, General Equipment, Amida, Coleman, NAC, Gradall, Square Shooter, Kent, Stanley, Tamco, Toku, Hatz, Kohler, Robin, Wisconsin, Northrock, Oztec, Toker TK, Rol-Air, APT, Wylie, Ingersoll Rand / Doosan, Innovatech, Con X, Ammann, Mecalac, Makinex, Smith Surface Prep, Small Line, Wanco, Yanmar