

MASONRY SAWS

Masonry 350 Smart Cut

Cutting bricks, blocks, paving stones, or tile is a breeze on the **biggest cutting table available** on a 14" Masonry Saw. The Smart Cut 350 delivers very accurate cuts up to **30" in length, and 4 3/4" deep**. This is one very versatile saw! The all **new 2 h.p. motor** provides plenty of power. Remember, always check your jobsite voltage and use a **10 gauge cord**, you want to be able to take advantage of all that horsepower!



2 HORSEPOWER

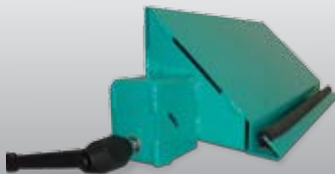
PORTABILITY

The new **stand folds up** and out of the way with a **spring loaded assist**. Your stand is always rock solid and ready to go! Each 350 Smart Cut arrives with a wheelkit mounted in place and ready to go, **moving the 350 Smart around the jobsite is quick n' easy**.

MITER CUTS

If your work requires you to make 45 degree miter cuts we have an accurate and easy to use Miter Guide.

This is an optional accessory available from IMER USA.



CONTRACTORS SPEAK UP

I am very pleased with my saw. It is very "heavy duty" compared to saws we used to rent!

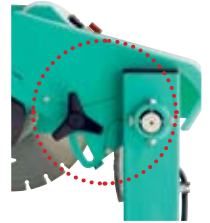
– Timothy A. Badders, White Hall, Maryland

ALL NEW VERSION



ACCURACY

Should your 350 Smart Cut ever come out of alignment it is **easy to adjust** the cutting head, as it rides inside an alignment collar which can be **adjusted left to right and up and down**. Sharp, accurate cuts are always delivered pass after pass, year after year.



INNOVATION

The blade guard is lined with **sound absorbing material** used in the boat building industry, and this greatly **reduces noise** from the blade. The blade guard may be removed with just two thumb screws – **changing blades is fast and easy**.



QUALITY

The cutting tray rolls back and forth on **ceramic nylon rollers** with sealed bearings. . . . this system is first class! The cutting action is smooth and consistent, while **one roller is mounted under the guide bar** to ensure the cutting tray does not jump up and down, or fall off the saw and get left behind at the jobsite!



QUICK SPECS	MASONRY 350 SMART CUT
Blade diameter	14"
Blade shaft diameter	1"
Motor	2HP, 110 Volts / 15 Amps
Max. cutting length (w/plunge cut)	26" (30")
Max. cutting depth	4-3/4"
Cutting table dimensions	20" x 16"
Cutting surface height	33.5"
Motor speed	2,850 r.p.m.
Weight (boxed)	175 lbs. (215 lbs.)
Water pan capacity	10 gal.
Water pump flow	3 g.p.m.
OPERATING DIMENSIONS (boxed)	
Length	47" (48")
Height	51" (55")
Width	28.5" (29")



www.Discount-Equipment.com

TO PURCHASE THIS PRODUCT PLEASE CONTACT US



**Equipment Financing and
Extended Warranties Available**



**Discount-Equipment.com is your online resource for
commercial and industrial quality parts and equipment sales.**

561-964-4949

visit us on line @ www.discount-equipment.com

Select an option below to find your Equipment

Search by Manufacturer

Search by Product Type

Request a Quote

We sell worldwide for the brands: Genie, Terex, JLG, MultiQuip, Mikasa, Essick, Whiteman, Mayco, Toro Stone, Diamond Products, Generac Magnum, Airman, Haulotte, Barreto, Power Blanket, Nifty Lift, Atlas Copco, Chicago Pneumatic, Allmand, Miller Curber, Skyjack, Lull, Skytrak, Tsurumi, Husquvarna Target, Stow, Wacker, Sakai, Mi-T-M, Sullair, Basic, Dynapac, MBW, Weber, Bartell, Bennar Newman, Haulotte, Ditch Runner, Menegotti, Morrison, Contec, Buddy, Crown, Edco, Wyco, Bomag, Laymor, EZ Trench, Bil-Jax, F.S. Curtis, Gehl Pavers, Heli, Honda, ICS/PowerGrit, IHI, Partner, Imer, Clipper, MMD, Koshin, Rice, CH&E, General Equipment, Amida, Coleman, NAC, Gradall, Square Shooter, Kent, Stanley, Tamco, Toku, Hatz, Kohler, Robin, Wisconsin, Northrock, Oztec, Toker TK, Rol-Air, APT, Wylie, Ingersoll Rand / Doosan, Innovatech, Con X, Ammann, Mecalac, Makinex, Smith Surface Prep, Small Line, Wanco, Yanmar