

MENEGOTTI TECHNICAL MANUAL VIBRATORY COMPACTOR MPC 80



Attention:

Before operating the **Menegotti** equipment, read this **technical manual**, it will inform and instruct the operator about the operation of the product. This way, you avoid possible work accidents and premature equipment maintenance.

Congratulations on purchasing a Menegotti product!

With the highest quality, designed and built especially to serve you with technology to suit your needs.

This manual was written to provide you with the information and instructions necessary for the use and maintenance of our equipment, as well as to present you with data relating to its technical characteristics.

Before you put your equipment into operation for the first time, carefully read the information contained herein.

The durability of your equipment depends only on the way it is treated during service (operation) and its satisfactory performance is the result of your careful work, carried out regularly.

Menegotti is prepared to offer you all the necessary technical assistance, as well as to meet your needs for spare parts.

Welcome, you are now a part of the great Menegotti "client family".

MENEGOTTI After Sales and
Technical Assistance departments.

Caution: For best convenience, keep this manual in a appropriate place where it can be consulted when necessary.

Index

The Company	03
The Product	03
Safety Informations	03
Technical Specifications	04
Working Operation	05
Equipment Maintenance	05
Product Warranty	07
Warranty Term	07

The Company

Reference of quality in the construction machinery segment. Leading brand on sales of Concrete Mixers. Present in over 40 countries in the world. Recognized for having a complete range of products, providing greater productivity and profitability to the business. We are Menegotti North America, a Company from Menegotti Group, and we want to bring you the best we've got!



The Product

Vibratory compactor is a compaction machine, able to work quickly by applying consecutive impacts to the ground surface to level the uneven ground surface, uniformizing it so that the space between the particles shrinks, and to increase the dry density of the soil that has its moisture removed by the compaction process. The vibratory compactor is intended exclusively for the compaction of: Sand, Clay, Gravel, Asphalt, Wet concrete, Interlocking floors, to avoid sedimentation and provide a firm and solid foundation.

Safety Informations

This manual must be completely read before any operation. On it there is useful information about the product, manufacturer, safety, replacement parts, maintenance and conservation. Keep this manual, on a proper place, so it may be consulted when necessary.



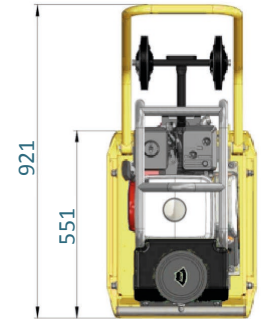
- NEVER allow any person to operate the machine without adequate instruction. The operator must be trained or qualified to operate this equipment.
- ENSURE all operators read, understand and follow the operating instructions.
- SERIOUS INJURY could result from improper or careless use of this machine.
- DO NOT operate the machine unless all protective guards are in place.
- KEEP handles and feet clear of rotating and moving parts as they will cause injury if contacted.
- ENSURE that the motor operation switch is in the OFF position and the spark plug ignition lead is disconnected before removing the guards or making adjustments.
- DO NOT leave the machine in operation while it is unattended.
- It is expressly prohibited to remove or alter any safety device or feature, if it occurs Menegotti will not be held responsible.
- Use the equipment according to the instructions on this manual.
- In case of damage or missing parts, contact MGT North America on our telephone number 770 9107450 for replacement.
- With the machine turned off, conduct a daily inspection of the machine's parts. In case of problems, immediately stop the operation and contact Menegotti's authorized service.

- Maintain a limited area exclusive for working with the equipment, always keeping this place clean, without obstructions and with proper illumination.
- Do not use clothing that is too loose and which might get caught in the machine.
- Always wear gloves, safety gloves and ear protection.
- Perform the maintenance recommended on this manual with qualified people and within the correct periods.
- Avoid contact with hot surfaces.
- Avoid contact with rotating parts.
- ENSURE that the area to be compacted does not contain any “live” electrical cables, gas, water or communication services which may be damaged by the action of vibration.
- DO NOT refuel the motor while it is in operation or hot.
- DO NOT refuel the motor in the vicinity of sparks, a naked flame or a person smoking.
- DO NOT operate or refuel a gasoline motor in a confined area without adequate ventilation.
- WEAR an approved hearing protection device to limit noise exposure.
- Do not break the seal and change the engine rotation, which may cause excessive wear on the engine, base and eccentric of this machine.
- Do not tilt machine to eccentric pulley side, because oil will leak from the eccentric vent.
- Do not use on compacted terrain.

“OPERATOR SHOULD BE OVER 18 YEARS OLD, BE TRAINED TO OPERATE THIS EQUIPMENT AND ALWAYS USE COMPULSORY PERSONAL PROTECTIVE EQUIPMENT (PPE)!!!”



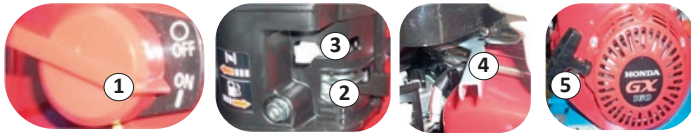
TECHNICAL DATA	MPC 80
Weight (Lb)	176,3
Base Dimensions - WxL (inch)	17,7x21,6
Fuel	Gasoline
Fuel Consumption (l/h)	1,5
Tank Capacity (gal)	0,95
Water Tank Capacity (gal)	3,17
Forward Speed (m/min)	25m/80ft / min
Impact Force (lbs)	3,375
Frequency (Hz)	98
Compaction Depth (inch)	up to 11,8
Compaction Area (m ² /h)	660m ² /7,000sqft / h



Working Operation

1) START

- Turn the power switch – ON position (1).
- Move fuel lever to the right (2).
- Move choke lever left (3).
- Move throttle to minimum speed position (4).
- Slowly pull the rope start (5), until you feel resistance. Allow the handle to pull back to the starting position and pull hard.



- Allow the engine to warm up for a few minutes and move the choke to the right and the throttle to full speed to begin compacting.

2) TURN OFF THE ENGINE

- Move throttle lever to minimum speed.
- Move fuel tap right to close.
- Turning the power switch to OFF position.

3) HOW TO OPERATE PROPERLY

- Start the drive motor.
- Move throttle to full speed position.
- Guide the vibratory compactor by its handle. Let the machine move, do not try to force the machine.
- Stop the operation: reduce to minimum acceleration, for the engine operate to idling speed, close the fuel valve, let the engine shut down and move the power switch to the OFF position.

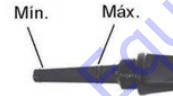
Equipment Maintenance

1) ENGINE OIL LEVEL:

- Remove oil level indicator and measure.



- Oil level should be between minimum and maximum marks.

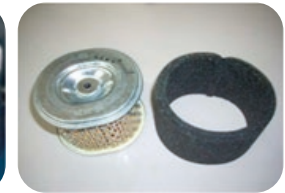
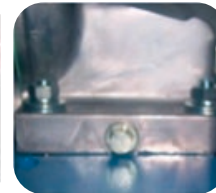


2) REPLACE ENGINE OIL:

- Place a drainer recipient at the end of the machine's oil drain.
- Remove oil fill cap, oil indicator.
- Remove the engine drain plug.
- Drain oil while engine is warm to ensure quick and complete drainage.
- When the engine is completely empty disconnect the oil flow pipe and replace oil.

3) AIR FILTER

- Loosen the air filter cover.
- Remove air filter and clean to engine manufacturer's specifications.
- In case of damage or excess impurities, replace the filter element.

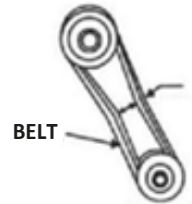


4) ECCENTRIC OIL:

- Loosen the oil outlet screw and let the oil drain.
- To replace oil, tilt the machine slightly and insert new oil through the same opening.

5) CHECKING AND REPLACING BELTS:

- After stopping the engine, remove the upper belt guard to check tension or replace the belt. The appropriate tension when pressed hard with your fingers between the axes: **7mm**.
- Loose or worn belts reduce the efficiency of power transmission, causing poor compaction and reducing belt life.
- **Always use the original belt to avoid changing the adjustment patterns.**



Preventive Maintenance Plan:

MAINTENANCE PERIOD	ITEM	ACTION
After the first 25 hours of operation	Engine	- Oil replace - Tighten all accessible bolts and nuts.
After every 8 hours of operation / daily	Air filter	- Clean the air filter and control it for damage. Replace if necessary.
After every 50 hours of operation / semi-annually	Engine	- Oil replace - Replace fuel filter - Replace oil filter
After every 300 hours of operation / annually	Eccentric	- Oil replace

References and Quantities:

ITEM	OIL / FUEL	QTY.
GX160 Engine	SAE 20W50 or 10W30	0,15 gal
GX160 Tank	Gasoline	0,95 gal
Eccentric	SAE 20W50	50ml

Product Warranty

The warranty is not transferable under the conditions and within the prescribed period and will be valid from the date of purchase of the equipment, through presentation of the sales invoice to the first end consumer. At the time of delivery of the equipment, the customer must receive the information and technical guidelines for the equipment as per the content of this manual.

Therefore, defects caused by mistreatment, carelessness, negligence, recklessness or malpractice, are not covered by this warranty, nor are any repairs or alterations of any part and/or piece of equipment. Also not covered is any assembly of the parts by any party other than the factory itself or Technical Assistant, application outside the specification, mechanical or electrical overloads or phase failure, use in an environment for which it was not designed, incorrect voltages of frequencies, incorrect lubrication, damage caused by accidents of any kind, such as floods, strong winds, fires, landslides or resulting from transportation.

The removal or alteration of the serial numbers originally placed on the product void the warranty, which must be presented on the sales invoice and the Warranty Certificate for the equipment in question.

The warranty assumed is limited to the repair, spare parts or parts assembly of the set of parts, in which the review is conducted by an Authorized Menegotti Technical Assistant and authorized in advance by the Factory, to double check the existence of the manufacturing defect. This repair or exchange will be made by an Authorized Technical Assistant, with the buyer bearing the risks or costs of transportation to and from the Technical Assistant, with the labor and replaced parts being free, under the terms of this warranty.

This supersedes any other warranty, express or implied as well as any and all liability or responsibility of our company concerning the above product.

MENEGOTTI After Sales and Technical Assistance departments.

Warranty Term

By the present CERTIFICATE provided from original purchaser, Menegotti guarantees this product against manufacturing defects, for a period of 6 (six) months, being: the first 3 (three) months of legal guarantee, and the last 3 (three) months a special warranty guaranteed by Menegotti, counted from the invoice issue date of the first final consumer. The components of daily use such as: bearings, clutch disc, gears, tires, brake shoes, etc. are not included in the warranty.

This warranty includes spare parts and repair against manufacturing defects duly verified by the factory or Authorized Technical Assistance. The warranty for this product will be void if it suffers damage caused by accidents, natural events, application outside the specification, or in the case of alterations or repairs by a person or workshop not authorized by Menegotti. The product freight charges, including the technical assistant or factory, are borne by the consumer. Menegotti has a wide network of Technical Assistants throughout the country.

If the equipment is purchased with the electric engine warranty covers defects arising from the internal engine manufacture. Not covered by warranty defects of: broken or crushed shell due to carelessness in transporting/or storage, energization of the motor coupling or out specification defects, general misuse and/or incorrect installation, overcharging due to lack or excess of phase and use of voltage out of the specification.

Aware of this term,

Customer: _____
Model: _____ **Serial Number:** _____
City: _____ **Date:** _____

Customer

Menegotti Authorized Service

MGT

NORTH AMERICA 



www.Discount-Equipment.com

To order go to www.Discount-Equipment.com