



www.Discount-Equipment.com

6280 COMMANDER WALK-BEHIND SCRAPER **SERVICE MANUAL**



Read Manual Before Servicing Machine

402963 Rev D

[illegible]

Florida: 561-964-4949 Outside Florida TOLL FREE: 877-690-3101

Click on this link: <http://www.discount-equipment.com/category/5443-parts/> and choose one of the options to help get the right parts and equipment you are looking for. Please have the machine model and serial number available in order to help us get you the correct parts. If you don't find the part on the website or on one of the online manuals, please fill out the request form and one of our experienced staff members will get back to you with a quote for the right part that your machine needs.

We sell worldwide for the brands: Genie, Terex, JLG, MultiQuip, Mikasa, Essick, Whiteman, Mayco, Toro Stone, Diamond Products, Generac Magnum, Airman, Haulotte, Barreto, Power Blanket, Nifty Lift, Atlas Copco, Chicago Pneumatic, Allmand, Miller Curber, Skyjack, Lull, Skytrak, Tsurumi, Husquvarna Target, , Stow, Wacker, Sakai, Mi-T- M, Sullair, Basic, Dynapac, MBW, Weber, Bartell, Bennar Newman, Haulotte, Ditch Runner, Menegotti, Morrison, Contec, Buddy, Crown, Edco, Wyco, Bomag, Laymor, Barreto, EZ Trench, Bil-Jax, F.S. Curtis, Gehl Pavers, Heli, Honda, ICS/PowerGrit, IHI, Partner, Imer, Clipper, MMD, Koshin, Rice, CH&E, General Equipment, ,AMida, Coleman, NAC, Gradall, Square Shooter, Kent, Stanley, Tamco, Toku, Hatz, Kohler, Robin, Wisconsin, Northrock, Oztec, Toker TK, Rol-Air, Small Line, Wanco, Yanmar

Table of Contents

| | |
|---|-----------|
| Table of Contents | 3 |
| Specifications | 4 |
| Safety | 5 |
| General Rules for Safe Operation | 5 |
| Walk-Behind Scraper Safety Guidelines | 6 |
| Hydraulic Safety Tips | 7 |
| Maintenance Schedule | 10 |
| Troubleshooting Guide | 11 |
| Maintenance | 8 |
| Wheel Cleaner Adjustment | 8 |
| Wheel Removal | 8 |
| Adding/Changing Hydraulic Fluid | 8 |
| Inspection of Internal Parts | 8 |
| Tank Removal | 9 |
| Control Valve Replacement | 9 |
| Power Cord | 9 |
| Isolators | 9 |
| Cutting Head Bearing | 9 |
| Parts List and Diagrams | 12 |
| External | 12 |
| Tank | 13 |
| Motor | 14 |
| Pump | 14 |
| Body | 15 |
| Idler Mount | 15 |
| Weights | 16 |
| Front Wheel Assembly | 16 |
| Cutting Head | 17 |
| Bottom and Back Cover | 18 |
| Wheels | 18 |
| Eccentric, Chain, and Belt | 19 |
| Hydraulic Motor | 19 |
| Base | 20 |
| Upper Handle Assembly | 21 |
| Hydraulic Hoses | 22 |
| Lower Sub-Assembly | 22 |
| Lever and Weldment | 23 |
| Front Cover | 24 |
| Knob | 25 |
| Adjustment Rod | 25 |
| 115V Wiring | 26 |
| Hydraulics | 27 |
| Warranty | 28 |

Specifications

| Product Specifications | | | | | | | | |
|------------------------|---------------------------|--|--|--|------|---------|-----|---------------------|
| Width | Length (Handle Folded) | Height | Weight | Speed | RPM | Voltage | HP | Amps (full load) |
| 17.75" (451 mm) | 29" (736.6 mm) | 46" (1,168 mm) (max. height) 30" (762 mm) (handle folded) | 334 lbs (151.5 kg) (machine only) 424 lbs (192.3 kg) (with weights) | 10-45 ft/min (USA only) 0-20 m/min | 3450 | 115 | 1.5 | 13 |

| Differences Between Machine Models | | | |
|------------------------------------|-----------------|-------------------|-------------|
| Region | Serial Number | Power / Frequency | Body Panels |
| Domestic | 6280-COM-10XXXX | 120 / 60 | Silver Vein |
| | 6280-COM-23XXXX | 120 / 60 | Silver Vein |
| | 6280-COM-12XXXX | 120 / 60 | Green |
| International | 6280-COM-11XXXX | 230 / 50 | Silver Vein |
| | 6280-COM-15XXXX | 230 / 50 | Orange |
| | 6280-COM-20XXXX | 110 / 50 | Silver Vein |
| | 6280-COM-13XXXX | 230 / 50 | Silver Vein |
| | 6280-COM-26XXXX | 230 / 50 | Silver Vein |
| | 6280-COM-28XXXX | 100 / 50/60 | Silver Vein |

Safety

GENERAL RULES FOR SAFE OPERATION

Before use, anyone operating or performing maintenance on this equipment must read and understand this manual, as well as any labels packaged with or attached to the machine and its components. Read the manual carefully to learn equipment applications and limitations, as well as potential hazards associated with this type of equipment. Keep manual near machine at all times. If your manual is lost or damaged, contact National Flooring Equipment (NFE) for a replacement.

Personal

Dress properly and use safety gear.

Do not wear loose clothing; it may be caught in moving parts. Anyone in the work area must wear safety goggles or glasses, hearing protection during extended use, and a dust mask for dusty operations. Hard hats, face shields, safety shoes, etc. should be worn when specified or necessary.

Maintain control; stay alert.

Keep proper footing and balance, and maintain a firm grip. Observe surroundings at all times and use common sense. Do not use when tired, distracted, or under the influence of drugs, alcohol, or any medication that may cause decreased control.

Keep hands away from all moving parts and tooling.

Wear gloves when changing tooling. Remove tooling when machine is not in use and/or lower cutting head to the floor.

Do not force equipment.

Equipment will perform best at the rate for which it was designed. Excessive force only causes operator fatigue, increased wear, and reduced control.

Environment

Avoid use in dangerous environments.

Do not use in rain, damp or wet locations, or in the presence of explosive atmospheres (gaseous fumes, dust, or flammable materials). Remove materials or debris that may be ignited by sparks. Keep work area tidy and well-lit - a cluttered or dark work area may lead to accidents. Extreme heat or cold may affect performance.

Protect others in the work area and be aware of surroundings.

Provide barriers or shields as needed to protect others from debris and machine operation. Children and other bystanders should be kept at a safe distance from the work area to avoid distracting the operator and/or coming into contact with the machine. Operator should be aware of who is around them and their proximity. Support personnel should never stand next to, in front of, or behind the machine while the machine is running. Operator should look behind them before backing up.

Guard against electric shock.

Ensure that machine is connected to a properly grounded outlet. Prevent bodily contact with grounded surfaces, e.g. pipes, radiators, ranges, and refrigerators. When scoring or making cuts, always check the work area for hidden wires or pipes.

Maintenance & Repairs

Begin maintenance work only when the machine is shut down, unplugged, and cooled down.

Use proper cleaning agents.

Ensure that all cleaning rags are fiber-free; do not use any aggressive cleaning products.

Schedule regular maintenance check-ups.

Ensure machine is properly cleaned and serviced. Remove all traces of oil, combustible fuel, or cleaning fluids from the machine and its connections and fittings. Retighten all loose fittings found during maintenance and repair work. Loose or damaged parts should be replaced immediately; use only NFE parts.

Do not weld or flame-cut on the machine during repairs, or make changes to machine without authorization from NFE.

Equipment

Use proper parts and accessories.

Only use NFE-approved or recommended parts and accessories. Using any that are not recommended may be hazardous.

Ensure accessories are properly installed and maintained.

Do not permanently remove a guard or other safety device when installing an accessory or attachment.

Inspect for damaged parts.

Check for misalignment, binding of moving parts, loose fasteners, improper mounting, broken parts, and any other conditions that may affect operation. If abnormal noise or vibration occurs, turn the machine off immediately. Do not use damaged equipment until repaired. Do not use if power switch does not turn machine on and off. For all repairs, insist on only identical NFE replacement parts.

Maintain equipment and labels.

Keep handles dry, clean, and free from oil and grease. Keep cutting edges sharp and clean. Follow instructions for lubricating and changing accessories. Motor and switches should be completely enclosed at all times with no exposed wiring. Inspect cord regularly. Labels carry important information; if unreadable or missing, contact NFE for a free replacement.

Avoid accidental starting; store idle equipment.

When not in use, ensure that the machine is unplugged; do not turn on before plugging in. Store in a dry, secured place. Remove tooling when storing, and keep away from children.



CAUTION! ENSURE PROPER USE OF EXTENSION CORDS. IF AMP DRAW IS HIGHER THAN SHOWN ON TABLE OR CORD IS LONGER THAN 50 FT, SEE AN ELECTRICIAN.

ASSUMPTIONS: 3% ALLOWABLE VOLTAGE DROP, COPPER CONDUCTORS RATED FOR 75°C, 1.25 SAFETY FACTOR, CORD VOLTAGE RATING OF 600VAC, PROPER CORD TYPES (STO, STOW, SOOW).

| Amp Draw | Gauge |
|----------|-------|
| 0-12 | 14 |
| 13-16 | 12 |
| 14-24 | 10 |
| 25-40 | 8 |

Safety

WALK-BEHIND SCRAPER SAFETY GUIDELINES

Before use, anyone operating this equipment must read and understand these safety instructions.

Scraping

Beware of hidden obtrusions.

Watch out for hidden dangers and protrusions in flooring. Do not use on largely uneven surfaces.

Observe location of electrical supplies and extension cords.

Do not allow cutting heads to come into contact with any electrical supply or extension cord.

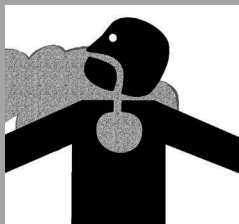
Use correct tooling and accessories.

Provide barriers or shields as needed to protect others from debris. After mounting tooling, check for proper alignment.

Use for correct applications.

Do not force equipment to do heavier duty work than it was made for.

Go to Discount-Equipment.com to order your parts



WARNING: GRINDING/CUTTING/DRILLING OF MASONRY, CONCRETE, METAL AND OTHER MATERIALS CAN GENERATE DUST, MISTS AND FUMES CONTAINING CHEMICALS KNOWN TO CAUSE SERIOUS FATAL INJURY OR ILLNESS, SUCH AS RESPIRATORY DISEASE, CANCER, BIRTH DEFECTS OR OTHER REPRODUCTIVE HARM. IF YOU ARE UNFAMILIAR WITH THE RISKS ASSOCIATED WITH THE PARTICULAR MATERIAL BEING CUT, REVIEW THE MATERIAL SAFETY DATA SHEET AND/OR CONSULT YOU EMPLOYER, THE MATERIAL MANUFACTURER/SUPPLIER, GOVERNMENTAL AGENCIES SUCH AS OSHA AND NIOSH AND OTHER AUTHORITIES ON HAZARDOUS MATERIALS. CALIFORNIA AND SOME OTHER AUTHORITIES, FOR INSTANCE, HAVE PUBLISHED LISTS OF SUBSTANCES KNOWN TO CAUSE CANCER, REPRODUCTIVE TOXICITY, OR OTHER HARMFUL EFFECTS. CONTROL DUST, MIST AND FUMES AT THE SOURCE WHERE POSSIBLE. IN THIS REGARD USE GOOD WORK PRACTICES AND FOLLOW THE RECOMMENDATIONS OF THE MANUFACTURER/SUPPLIER, OSHA/NIOSH, AND OCCUPATIONAL AND TRADE ASSOCIATIONS. WHEN THE HAZARDS FROM INHALATION OF DUST, MISTS AND FUMES CANNOT BE ELIMINATED, THE OPERATOR AND ANY BYSTANDERS SHOULD ALWAYS WEAR A RESPIRATOR APPROVED BY OSHA/MSHA FOR THE MATERIAL BEING CUT.

Safety

HYDRAULIC SAFETY

Maintaining a Safe Work Environment

Establishing a safe work environment in and around your hydraulic equipment is extremely important. The easiest and most effective way to avoid problems is to make sure associates understand their equipment, know how to operate the machines safely, and recognize the dangers if handled carelessly. A few things to be aware of are:

- **Pressure:** Hydraulic fluid under pressure is dangerous and can cause serious injury. Never look for a leak when unit is under pressure. Using your hand could cause serious injury. A few common ways to encounter hydraulic fluid under pressure include:
 - Pinhole: Fluid under pressure can cause serious injury. It can be almost invisible escaping from a pinhole, and it can pierce the skin into the body.



DANGER: DO NOT TOUCH A PRESSURIZED HYDRAULIC HOSE ASSEMBLY WITH ANY PART OF THE BODY. IF FLUID PUNCTURES THE SKIN, EVEN IF NO PAIN IS FELT, A SERIOUS EMERGENCY EXISTS. OBTAIN MEDICAL ASSISTANCE IMMEDIATELY. FAILURE TO DO SO COULD RESULT IN LOSS OF THE INJURED BODY PART OR DEATH.

- Leak: Keep fittings and hoses tight. Only check and service when not under pressure. Leaking hydraulic fluid is hazardous; in addition to making workplace floors slippery and dangerous, it also contaminates the environment. Before cleaning an oil spill, always check EPA, state, and local regulations.
- Burst: Whether due to improper selection or damage, a ruptured hose can cause injury. If it bursts, a worker can be burned, cut, injected, or may slip and fall.
- Coupling Blow-Off: If the assembly is not properly made or installed, the coupling could come off and hit or spray a worker, possibly resulting in serious injury. Never operate machine without guards.
- **Flammability:** When ignited, some hydraulic fluids can cause fires and/or explode. With the exception of those comprised primarily of water, all hydraulic fluid is flammable (including many "fire-resistant" hydraulic fluids) when exposed to the proper conditions. Leaking pressurized hydraulic fluids may develop a mist or fine spray that can flash or explode upon contact with a source of ignition. These explosions can be very severe and could result in serious injury or death. Precautions should be taken to eliminate all ignition sources from contact with escaping fluids, sprays or mists resulting from hydraulic failures. Sources of ignition could be electrical discharges (sparks), open flames, extremely high temperatures, sparks caused by metal-to-metal contact, etc.



CAUTION: NEVER USE YOUR HANDS TO CHECK FOR LEAKS OVER HOSE OR HYDRAULIC CONNECTIONS. USE A PIECE OF CARDBOARD TO LOCATE A PRESSURIZED LEAK. FOR LOW PRESSURE LEAKS (DRIPS), USE A RAG TO CLEAN THE AREA AND DETERMINE WHERE THE LEAK ORIGINATES.

- **Mechanical:** Hydraulic fluid creates movement, which means some equipment may move. Observe surroundings and equipment at all times.
- **Moisture:** Do not use in wet or high moisture conditions.
- **Electrical:** Faulty wiring can be an electrical hazard. A regular preventive maintenance program should always include a wiring check. If applicable, disconnect battery before servicing.
- **Temperature:** Because this machine operates at a relatively low pressure, overheating is not common. If surface of tank becomes too hot to touch by hand (above 130°F or 55°C), shut off machine and allow it to cool.

Hydraulic Fluid

Only use Texaco Rando 46 Hydraulic Oil or compatible fluid like ISO or AW #46 from a brand name manufacturer. Non-compatible fluids could cause damage to unit or serious injury.

Maintenance



WARNING: ALWAYS UNPLUG MACHINE BEFORE PERFORMING MAINTENANCE.

WHEEL CLEANER ADJUSTMENT

1. Loosen wheel cleaner with 9/16" wrench (Figure 1).
2. Slide cleaner up to the face of the wheel until it touches, but does not dig into the wheel surface.
3. Re-tighten firmly. **Note:** Too much interference between the wheel and cleaner will damage wheel.

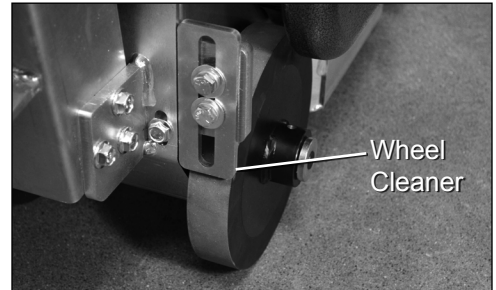


FIG. 1

WHEEL REMOVAL

1. Turn off and unplug machine.
2. Examine back of wheels for built-up debris.
3. Remove yarn build-up.
4. Lay machine on its side.
5. Disengage and remove axle pin (Figure 2).
6. Remove wheel-securing screw with a 3/16" Allen wrench (Figure 2).
7. Remove wheel-securing cap. Wheel will slide off.
8. Remove wheel spacer. This should be inspected at regular intervals.

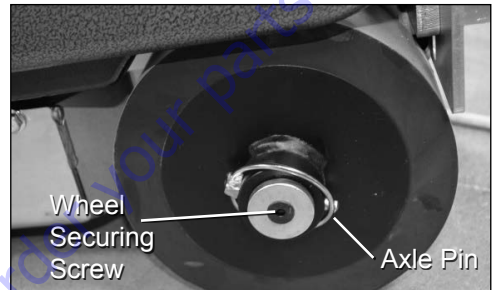


FIG. 2

ADDING OR CHANGING HYDRAULIC FLUID

- Change or add fluid when needed; check fluid level if there has been a leak, damaged or ruptured hose, or a loose fitting. Fluid should be level with bottom of tank plug hole (Figure 3).
- **To add fluid**, unscrew filler port cap from top of machine (Figure 4); add fluid through a filter or funnel with a screen to keep fluid clean.
- **To change fluid**, remove filler port cap. Remove drain plug from side of machine (Figure 4). A two gallon container will be needed to drain the fluid into. (Fluid will not be removed from hoses.) Regardless of the machine's straining system, add fluid through a filter or funnel with a screen to keep fluid clean.



FIG. 3



FIG. 4

INSPECTION OF INTERNAL PARTS

Visual inspection of internal parts can be done without draining the tank.

1. Remove two lifting bail eyebolts and the two bolts from the back of the tank.
2. Carefully lift tank 3-4" (8-10 cm).
3. Using a flashlight, inspect the drive chain, hoses, front seal on hydraulic motor, and suction and pressure line on pump.
4. If service is necessary, follow the procedure for tank removal.

Note: Figures 1-4 are shown without sliding side weights for clarity.

TANK REMOVAL

It is necessary to remove the tank in order to repair the pump, or to replace or service internal hoses.

1. Drain tank by removing the top filler port cap and drain plug on the side of the machine (Figure 12). A two gallon container will be needed to drain the fluid into.
2. Replace drain plug and filler port cap.
3. Remove two lifting bail eyebolts and the two bolts from the back of the tank.
4. Disconnect return line on the back of the tank; carefully lift tank 3-4" (8-10 cm) and disconnect suction line. The tank can now be removed.

POWER CORD

If the power cord is damaged, it must be replaced by NFE or a qualified professional.

ISOLATORS

Inspection

1. Perform the wheel removal procedure to access the bottom cover.
2. Remove one wheel at a time; remove the bottom cover bolt behind each wheel.
3. Carefully remove the bottom cover to expose the underside.
4. Inspect the isolators from the side for damage or wear.

Replacement

1. Remove the side slide weights, side weights, and front weight.
2. Loosen the top five hex head bolts holding the isolators in place. Grip each isolator with locking pliers to aid in loosening.
3. Remove and replace each isolator.

CUTTING HEAD BEARING

Inspection

1. Perform the wheel removal procedure to access the bottom cover.
2. Remove one wheel at a time; remove the bottom cover bolt behind each wheel.
3. Carefully remove the bottom cover to expose the underside.
4. Inspect the cutting head bearing for damage or wear.

Replacement

1. Remove the bottom cover.
2. Remove the cutting head bearing from the bottom cover by removing the four bolts that hold down the bearing.
3. Replace the cutting head bearing and re-tighten the four bolts.
4. Place the bottom cover and re-tighten the eight bolts that hold the bottom cover in place.

Maintenance

| Maintenance to be performed | Interval | | | |
|---|----------|--------|----------|----------|
| | Daily | 50 hrs | 1000 hrs | 2000 hrs |
| Inspect fasteners, wheels and blade holders for damage. | • | | | |
| Clean built-up glue and debris from wheels, front weight, and blade holder. | • | | | |
| Visually inspect internal parts. | | • | | |
| Inspect safety devices and switches (power cord, wheel cleaners, switches). | | • | | |
| Inspect and replace isolators. | | | • | |
| Inspect and replace cutting head bearing. | | | • | |
| Change hydraulic fluid. | | | | • ○ |

○ - Perform maintenance at least once a year

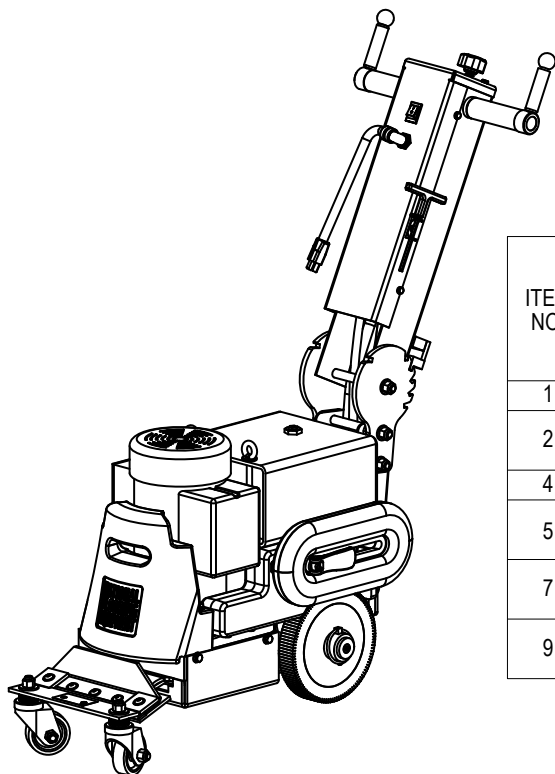
Go to Discount-Equipment.com to order your parts

Troubleshooting Guide

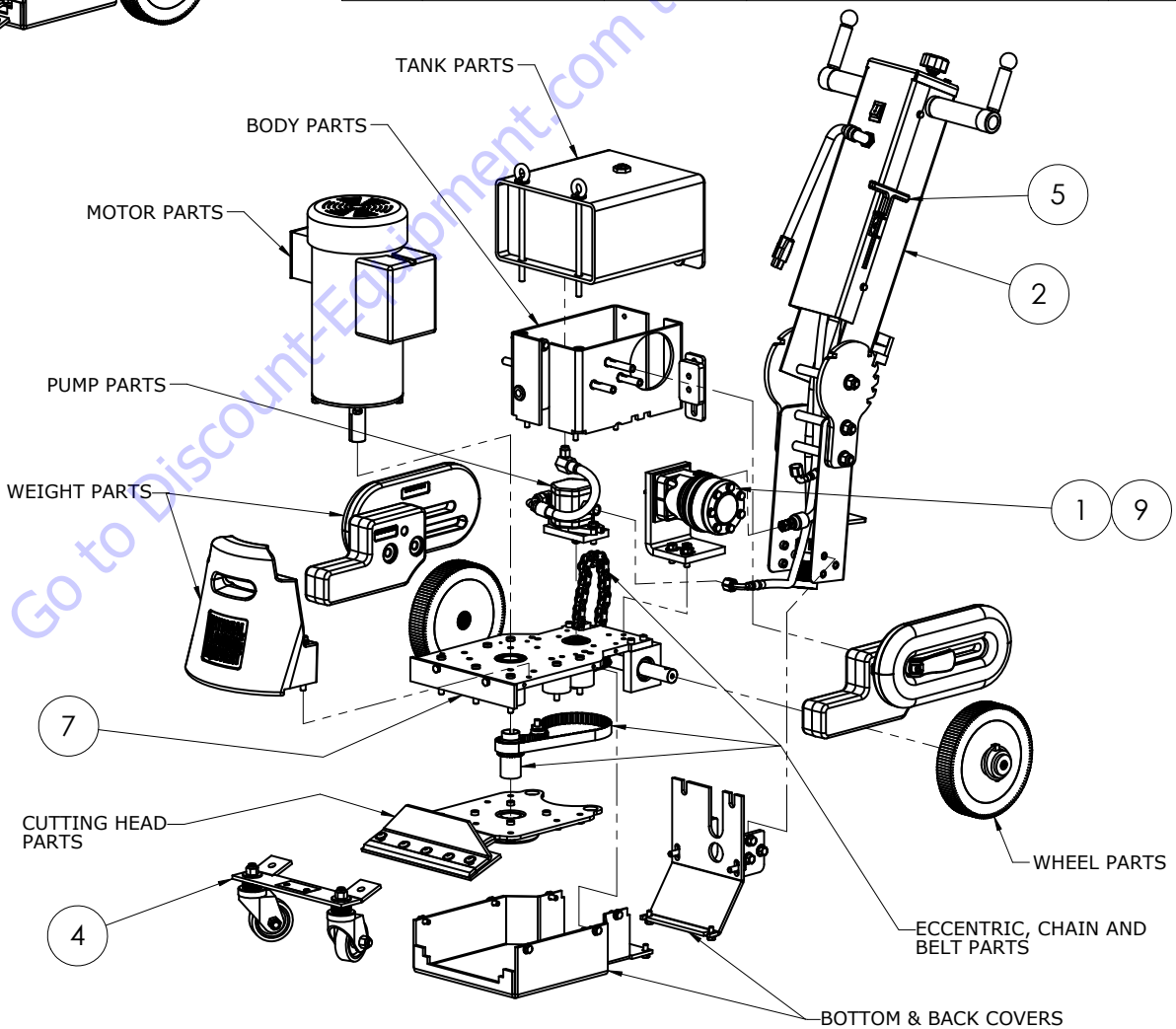
| Problem | Cause | Solution |
|---|--|---|
| Machine will not start. | Insufficient power. | Ensure use of properly rated extension cord. |
| | Loose capacitor leads. | Check capacitor leads to ensure good connection. |
| | Overload button on motor has been tripped. | Button is located on the bottom of the electric box on motor. If tripped, hold button in until it clicks. |
| | Faulty ON/OFF switch. | Replace if needed. |
| Machine will not move under power. | Wheels are not in the "engage mode." | Install wheel pins for "engage mode." |
| | Broken belt. | Remove wheels and bottom cover to inspect. Replace if needed. |
| | Broken chain. | Remove wheels and bottom cover to inspect; repair or replace if needed. |
| | Control handle mechanism failure. | Inspect control mechanism; repair or replace as needed. |
| Motor is humming, but machine does not run or breakers are blown. | Failed isolators. | Remove wheels and bottom cover to inspect. |
| | Failed capacitors. | Replace as needed. |
| | Motor start switch connections are dirty. | Remove fan cover and fan. Clean the motor start switch (set of points) with an emery board or cloth between the points; reassemble. |
| Machine is leaking hydraulic fluid. | Leak in hose(s). | Tighten; replace if needed. |
| | Hydraulic fittings are loose. | Tighten; replace if needed. |
| Motor is heating up. | Motor shaft is binding. | Remove wheels and cover to inspect isolators. Inspect cutting head bearing and eccentric to ensure that they are not binding. If issue continues, contact NFE for additional support. |

Parts List and Diagrams

EXTERNAL

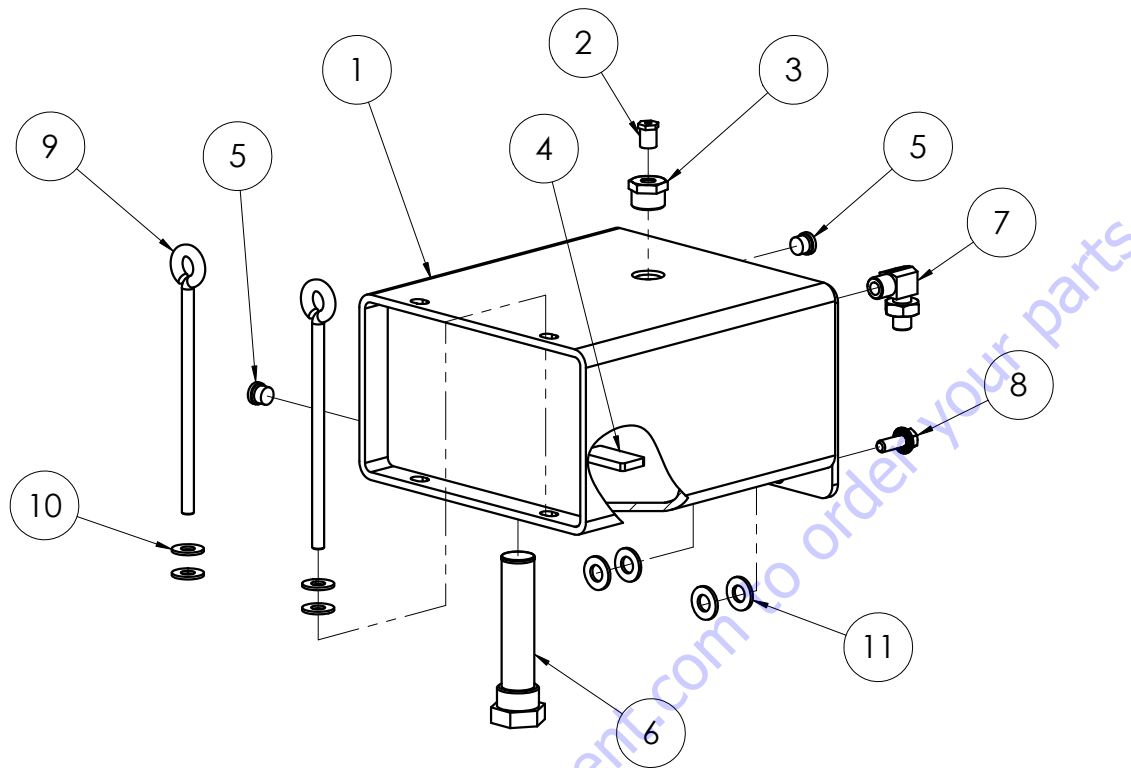


| ITEM NO. | 6280-10XXXX 6280-12XXXX 6280-23XXXX | 6280-11XXXX 6280-13XXXX 6280-15XXXX 6280-20XXXX 6280-26XXXX 6280-28XXXX | DESCRIPTION | QTY |
|----------|---|--|--------------------------------------|-----|
| 1 | 401546 | 401546 | Motor, Hydraulic, Sub, 6280 | 1 |
| 2 | 401577 | | Assembly, Commander Handle, 115V | |
| | | 400025 | Assembly, Commander Handle, 230V | 1 |
| 4 | 6280-299 | 6280-299 | Wheel Assembly, Front | 1 |
| 5 | 6280-401B | | Wrench, Allen, 7/32 | |
| | | 5280-137W | Wrench, Blade | 1 |
| 7 | 6280S-BASEASSY | | Subassembly, Base, 6280, 7 Isolators | |
| | | 401639 | Subassembly, Base, 6280, Metric | 1 |
| 9 | 73222 | | Bolt, Flange 3/8-16 x 1 | |
| | | 74650 | Bolt, Hex Flange M10-25 | 3 |



Parts List and Diagrams

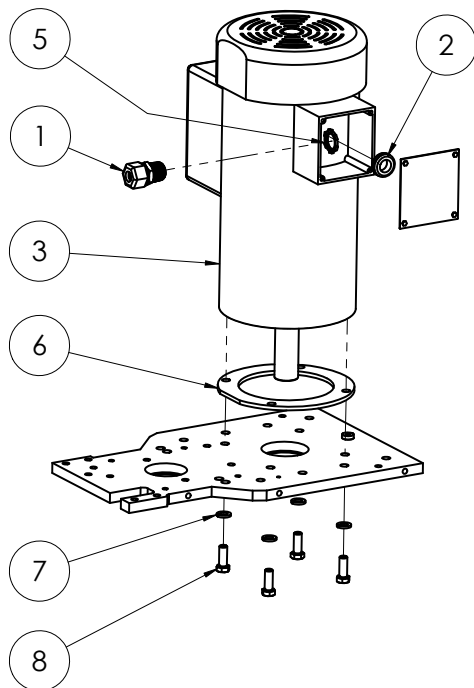
TANK



| ITEM NO. | 6280-10XXXX 6280-11XXXX 6280-13XXXX 6280-20XXXX 6280-23XXXX 6280-26XXXX 6280-28XXXX | 6280-12XXXX | 6280-15XXXX | DESCRIPTION | QTY. |
|----------|---|-------------|-------------|---|------|
| 1 | 6280-162-SV | 6280-162-G | 6280-162-O | Tank, Hydraulic, Weldment, Green Tank, Hydraulic, Weldment, Orange Tank, Hydraulic, Weldment, Silver Vein | 1 |
| 2 | 6280-161B | 6280-161B | 6280-161B | Plug, Vent, Filler Cap | 1 |
| 3 | 6280-161D | 6280-161D | 6280-161D | Plug, Filler Port | 1 |
| 4 | 6280-162G | 6280-162G | 6280-162G | Magnet, Tank | 1 |
| 5 | 6280-214 | 6280-214 | 6280-214 | Plug, Tank | 2 |
| 6 | 70601 | 70601 | 70601 | Strainer, Tank Mounted | 1 |
| 7 | 72816 | 72816 | 72816 | Fitting, Elbow, 90 Deg. 3/8 | 1 |
| 8 | 73222 | 73222 | 73222 | Bolt, Flange 3/8-16 x 1 | 2 |
| 9 | 73228 | 73228 | 73228 | Eye Bolt, 3/816x8 | 2 |
| 10 | 73264 | 73264 | 73264 | Washer, Flat, Zinc USS 3/8 | 4 |
| 11 | 401452 | 401452 | 401452 | Washer, Flat, 1/2", SAE | 4 |

Parts List and Diagrams

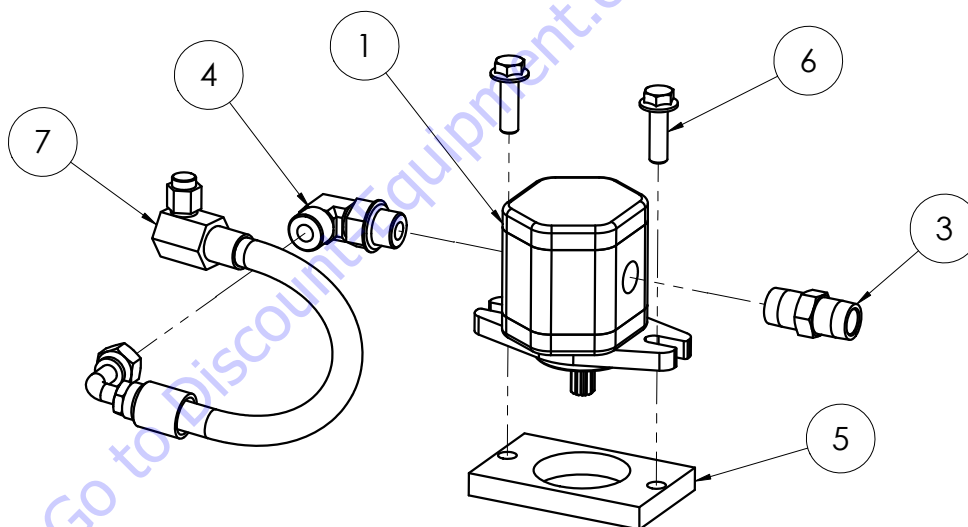
MOTOR



| ITEM NO. | 6280-10XXXX 6280-12XXXX 6280-23XXXX | 6280-11XXXX 6280-13XXXX 6280-15XXXX 6280-20XXXX 6280-26XXXX 6280-28XXXX | DESCRIPTION | QTY. |
|----------|---|--|---|------|
| 1 | 73502 | 73502 | Strain Relief, Straight 1/2 in | 1 |
| 2 | 74730 | 74730 | Grommet, Rubber 5/8" | 1 |
| 3 | 72365 | 72367W | Motor, 1-1/2 HP 115 Volt Motor, 230V, 1.5 HP, 116943 | 1 |
| 5 | 73401 | | Nut, Strain Relief, Steel, 1/2" | 1 |
| 6 | 6280-179 | 6280-179 | Ring, Motor Spacer | 1 |
| 7 | 73204 | 73204 | Washer, Lock, 3/8 | 4 |
| 8 | 73201 | 73201 | Screw, Hex Head Cap, 3/8-16 x 1 | 4 |
| 9* | 72810 | 72810 | Caps, Splice | 3 |
| 10* | 72811 | 72811 | Caps, Insulator, Splice | 3 |
| 11* | 72821 | 72821 | Terminal, Ring, 16-14 Gauge, Nylon, 10 Stud | 1 |

*NOT SHOWN

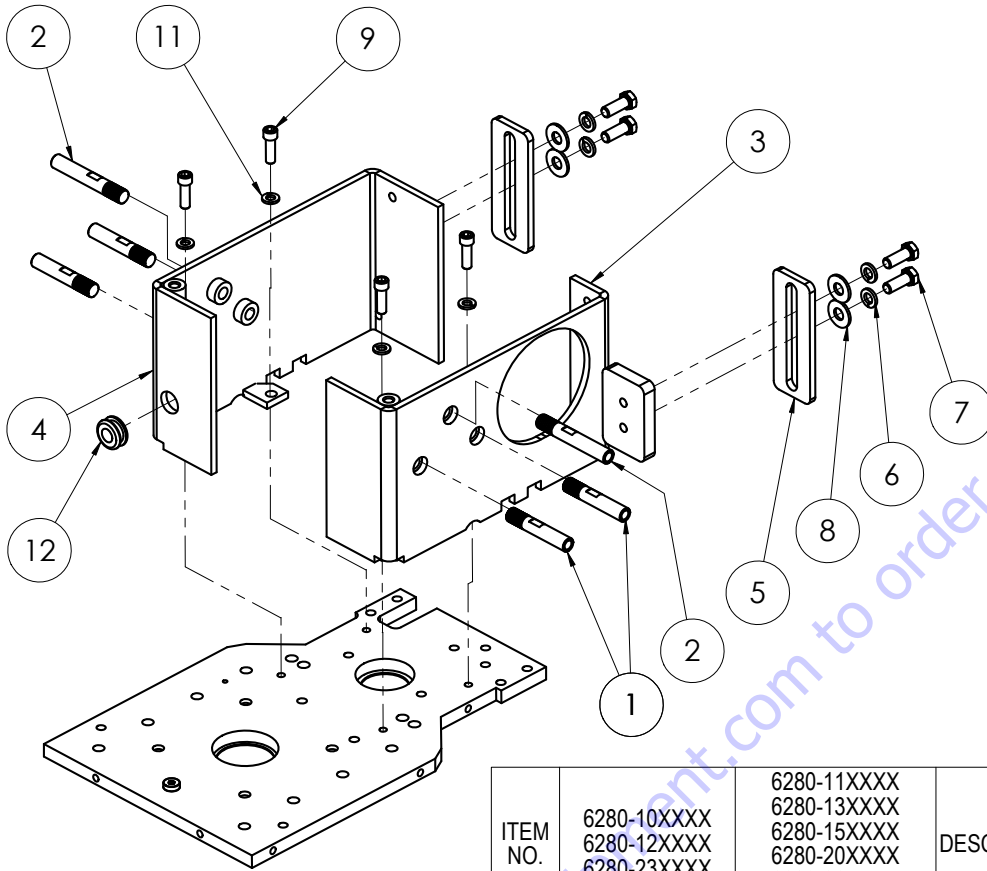
PUMP



| ITEM NO. | 6280-10XXXX 6280-12XXXX | 6280-11XXXX 6280-13XXXX 6280-15XXXX 6280-20XXXX 6280-26XXXX 6280-28XXXX | DESCRIPTION | QTY. |
|----------|----------------------------|--|---|------|
| 1 | 6280-113S | 70925 | Pump, Spline #4 Pump, Hydraulic, Single, #7, Splined | 1 |
| 3 | 6280-117 | 6280-117 | Fitting, Pump | 1 |
| 4 | 6280-118 | 6280-118 | Fitting, Suction Hose to Pump | 1 |
| 5 | 6280-119 | 6280-119 | Spacer, Pump | 1 |
| 6 | 73223 | 73223 | Bolt, Flange 3/8-16x1-1/4 | 2 |
| 7 | 6280-120 | 6280-120 | Suction Hose | 1 |

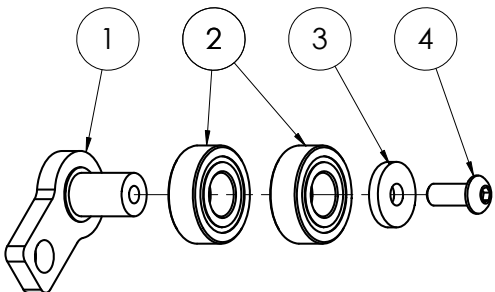
Parts List and Diagrams

BODY



| ITEM NO. | 6280-10XXXX 6280-12XXXX 6280-23XXXX | 6280-11XXXX 6280-13XXXX 6280-15XXXX 6280-20XXXX 6280-26XXXX 6280-28XXXX | DESCRIPTION | QTY. |
|----------|---|--|--------------------------------------|------|
| 1 | 400061 | 400061 | Standoff, Slide Weight Short, Metric | 4 |
| 2 | 400062 | 400062 | Standoff, Slide Weight Long | 2 |
| 3 | 6280-156L | 6280-156L | Body, Main, Upper, Left | 1 |
| 4 | 6280-156R | 6280-156R | Body, Main, Upper, Right | 1 |
| 5 | 6280-165 | 6280-165 | Cleaner, Wheel | 2 |
| 6 | 73204 | 73204 | Washer, Lock, 3/8 | 4 |
| 7 | 73201 | 73201 | Screw, Hex Head Cap, 3/8-16 x 1 | 4 |
| 8 | 73264 | 73264 | Washer, Flat, Zinc USS 3/8 | 4 |
| 9 | 73311 | | Screw, Socket Head Cap, 5/16-18 x 1 | 4 |
| | | 401848 | Screw, Socket Head Cap, M8-1.25 x 25 | |
| 11 | 73303 | 73303 | Washer, Split Lock 5/16 | 4 |
| 12 | 74763 | 74763 | Grommet, Rubber 1/2" | 1 |

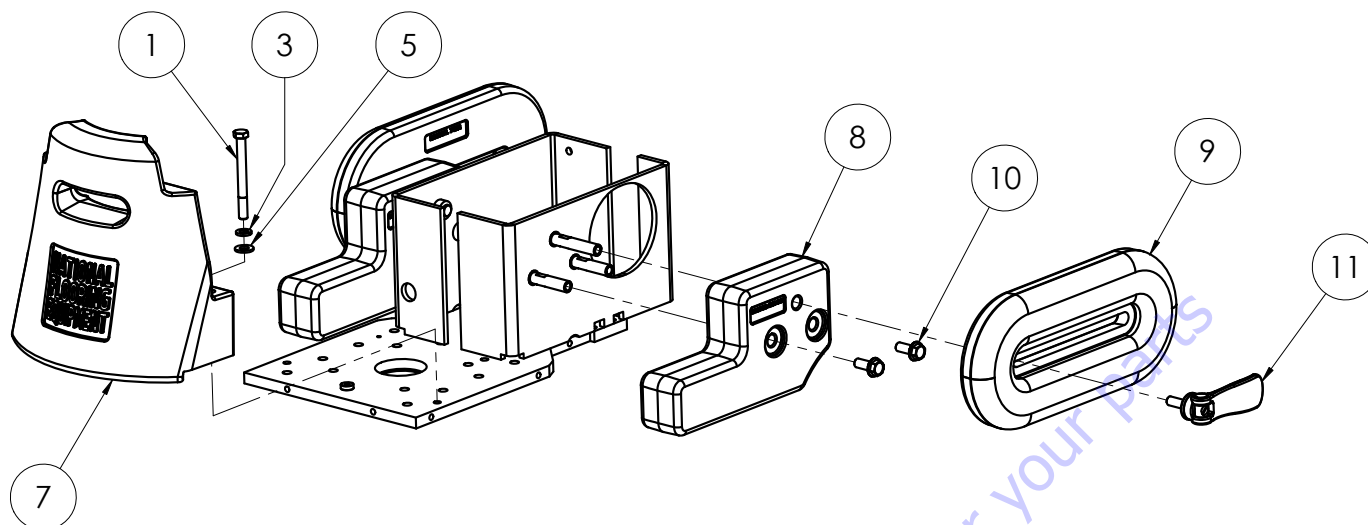
IDLER MOUNT



| ITEM NO. | PART NUMBER | DESCRIPTION | QTY. |
|----------|-------------|--|------|
| 1 | 6280-125W | Bracket and Pin, Idler Mount | 1 |
| 2 | 71072 | Bearing, 1/2 ID DCTN-1616 | 2 |
| 3 | 6280-126A | Cap, Idler Bearing | 1 |
| 4 | 73003 | Screw, Button Head Socket Cap 1/4-20x5/8 | 1 |

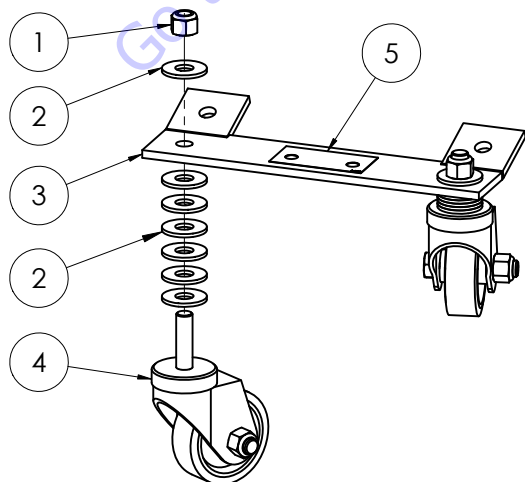
Parts List and Diagrams

WEIGHTS



| ITEM NO. | 6280-10XXXX 6280-23XXXX | 6280-12XXXX | 6280-11XXXX 6280-13XXXX 6280-20XXXX 6280-26XXXX 6280-28XXXX | 6280-15XXXX | DESCRIPTION | QTY. |
|----------|----------------------------|-------------|---|-------------|---|------|
| 1 | 400269 | 400269 | 400184 | 400184 | Bolt, Hex Head, 3/8-16 x 3-3/4 | 2 |
| 3 | 73204 | 73204 | 74657 | 74657 | Washer, Lock, 3/8 | 2 |
| 5 | 73263 | 73263 | 74655 | 74655 | Washer, Flat SAE Zinc 3/8 | 2 |
| 7 | 74852-SV | 74852-G | 74852-SV | 74852-O | Weight, Front, Green Weight, Front, Orange Weight, Front, Silver Vein | 1 |
| 8 | 74853-BLK | 74853-BLK | 74853-BLK | 74853-BLK | Side weight | 2 |
| 9 | 74851-SV | 74851-G | 74851-SV | 74851-O | Weight, Slide, Green Weight, Slide, Orange Weight, Slide, Silver Vein | 2 |
| 10 | 74650 | 74650 | 74650 | 74650 | Bolt, Hex Flange M10-25 | 4 |
| 11 | 400119 | 400119 | 400119 | 400119 | Lever, Cam, M10 | 2 |

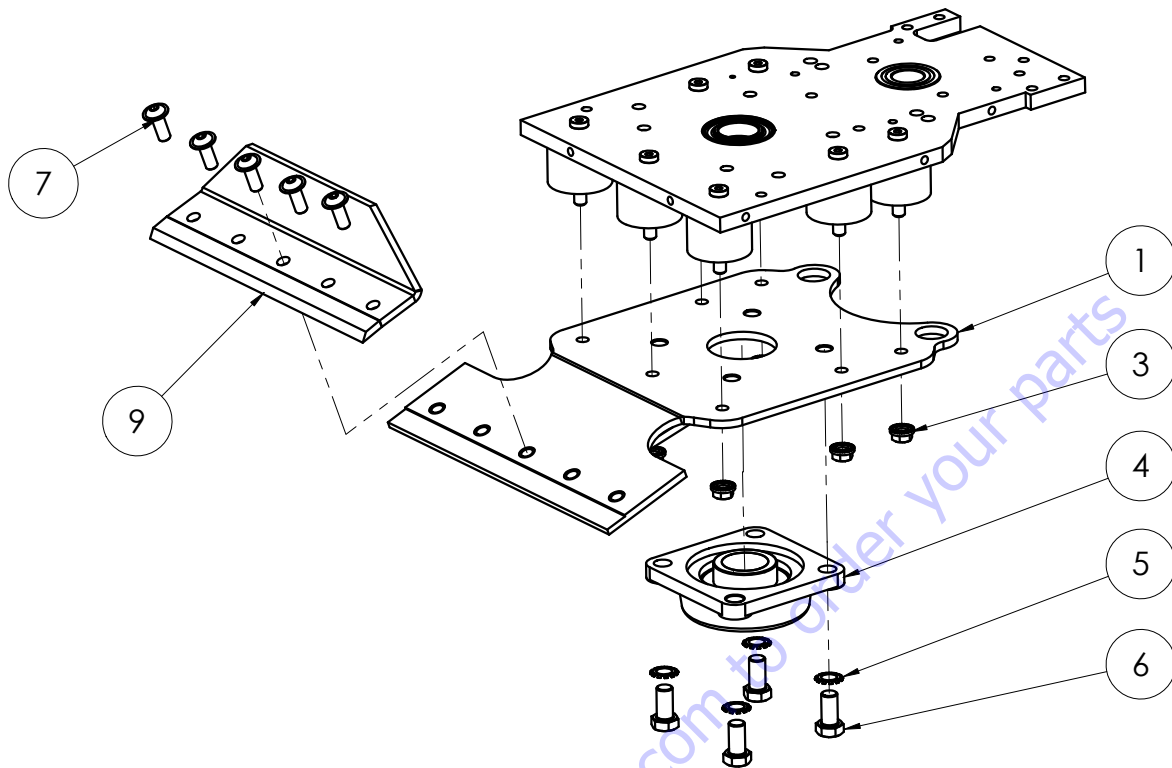
FRONT WHEEL ASSEMBLY



| ITEM NO. | PART NUMBER | DESCRIPTION | QTY. |
|----------|-------------|-----------------------------------|------|
| 1 | 73402 | Nut, Nylock 1/2-13 | 2 |
| 2 | 73425 | Washer, Flat USS Zinc 1/2 | 14 |
| 3 | 6280-300 | Bracket, Transport Wheel | 1 |
| 4 | 6280-301 | Caster Assy, Swivel, 3-inch, Stem | 2 |
| 5 | L191 | Label Caution | 1 |

Parts List and Diagrams

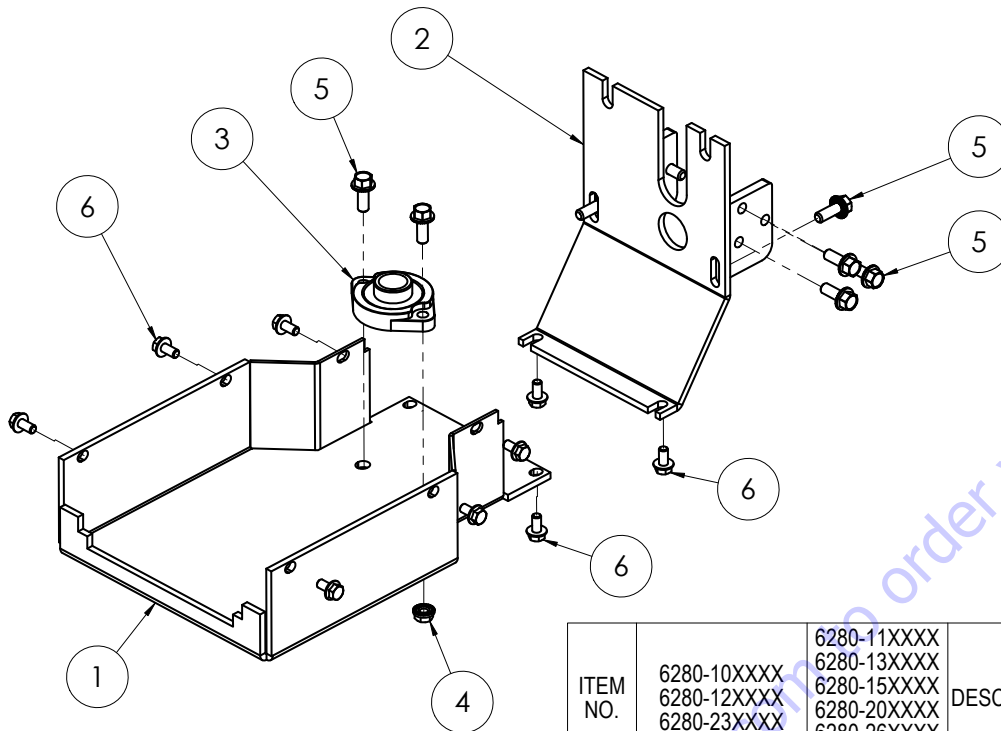
CUTTING HEAD



| ITEM NO. | 6280-10XXXX 6280-12XXXX 6280-23XXXX | 6280-13XXXX 6280-15XXXX 6280-11XXXX 6280-20XXXX 6280-26XXXX 6280-28XXXX | DESCRIPTION | QTY. |
|----------|---|--|--|------|
| 1 | 6280-330 | | Head, Cutting, Heavy Duty | 1 |
| | | 401638 | Head, Cutting, Metric | 1 |
| 3 | 73211 | 73211 | Nut, Flange, Serrated, 3/8-16 | 7 |
| 4 | 71141 | 71141 | Bearing, 1-7/16" ID 16SC4FB Dodge Housing Assy | 1 |
| 5 | 73423 | 73423 | Washer, Interior/Exterior Lock 1/2" | 4 |
| 6 | 73418 | 73418 | Bolt, Hex Head 1/2-20x1 | 4 |
| 7 | 73242 | | Screw, Button Head Cap with Flange 3/8-16 x 1 | 5 |
| | | 74649 | Screw, Button Head Cap With Flange M10-25 | 5 |
| 9 | 6280-136 | 6280-136 | Cover, Blade | 1 |

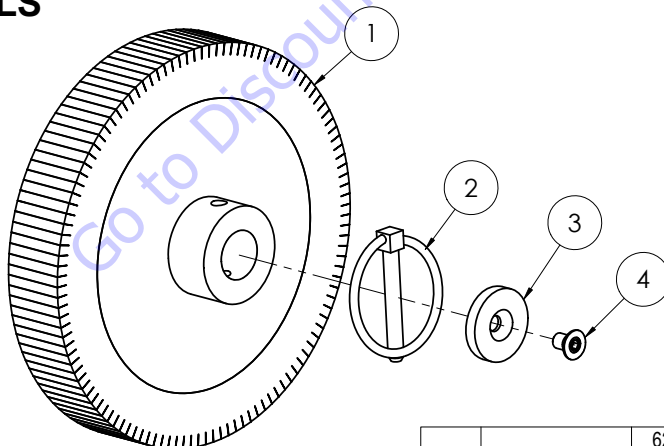
Parts List and Diagrams

BOTTOM AND BACK COVER



| ITEM NO. | 6280-10XXXX 6280-12XXXX 6280-23XXXX | 6280-11XXXX 6280-13XXXX 6280-15XXXX 6280-20XXXX 6280-26XXXX 6280-28XXXX | DESCRIPTION | QTY. |
|----------|---|--|----------------------------------|------|
| 1 | 6280-138 | 6280-138 | Cover, Main Bottom | 1 |
| 2 | 6280-139 | 6280-139 | Cover, Rear | 1 |
| 3 | 71118 | 71118 | Bearing, Flange | 1 |
| 4 | 73211 | 73211 | Nut, Flange, Serrated, 3/8-16 | 2 |
| 5 | 73222 | 73222 | Bolt, Flange 3/8-16 x 1 | 10 |
| 6 | 73318 | | Bolt, Wizlock Flange 5/16-18x5/8 | 10 |
| | | 74631 | Bolt, Hex Flange Bolt M6-16 | |

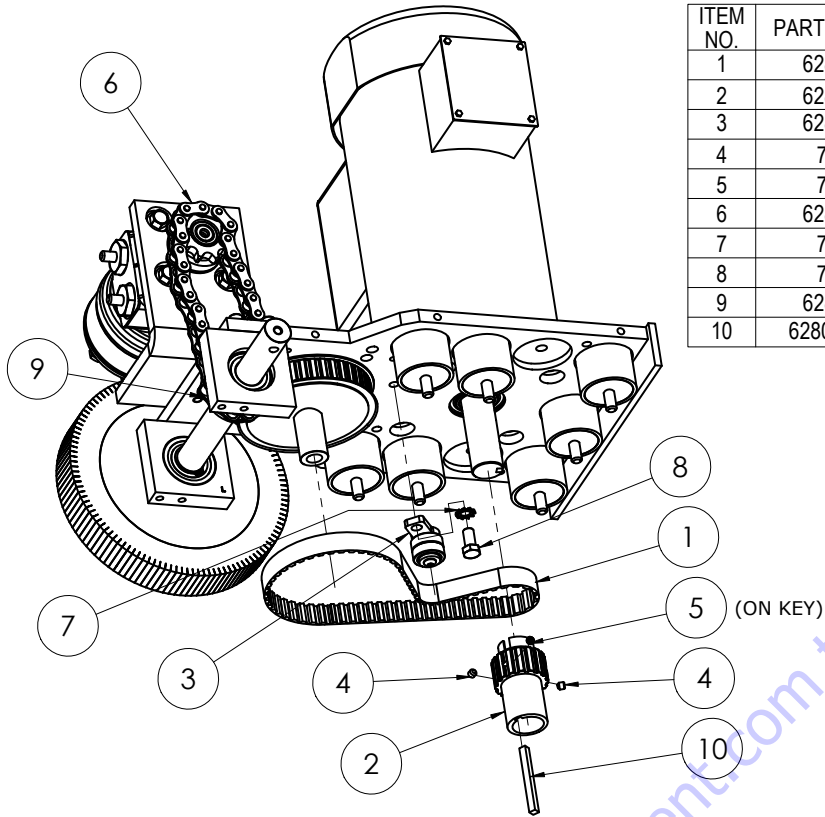
WHEELS



| ITEM NO. | 6280-10XXXX 6280-12XXXX 6280-23XXXX | 6280-11XXXX 6280-13XXXX 6280-15XXXX 6280-20XXXX 6280-26XXXX 6280-28XXXX | DESCRIPTION | QTY. |
|----------|---|--|---|------|
| 1 | 402591 | 402591 | Wheel, Drive, Siped, Med. Duty, 8.25 x 1.38 | 2 |
| 2 | 402311 | 402311 | Pin, Lynch, 5/16 x 2-1/16 | 2 |
| 3 | 6280-112 | 6280-112 | Cap, Wheel | 2 |
| 4 | 73313 | | Screw, Flat Head Socket Cap 5/16-18x1/2 | 2 |
| | | 400342 | Bolt, Flat Socket Head, M8 1.25 x 14mm | 2 |

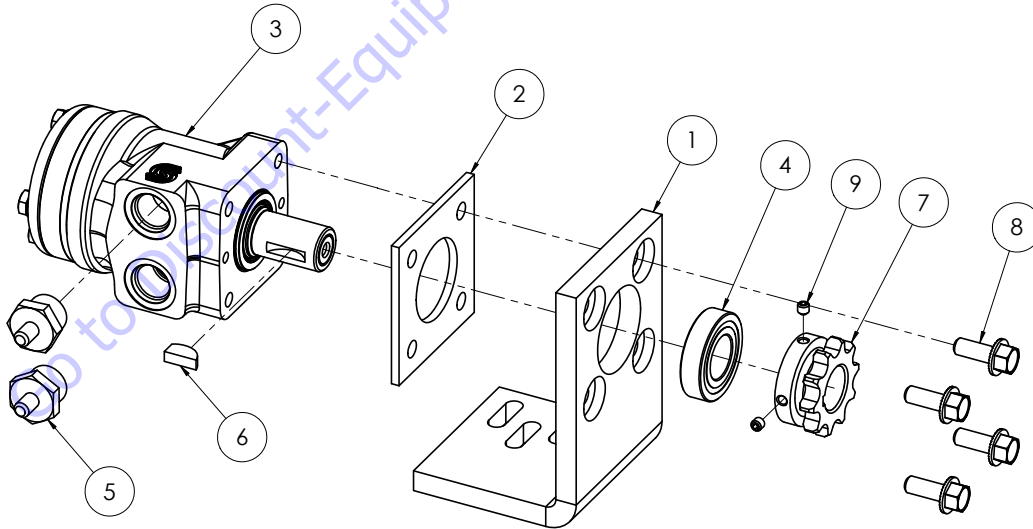
Parts List and Diagrams

ECCENTRIC, CHAIN, AND BELT



| ITEM NO. | PART NUMBER | DESCRIPTION | QTY. |
|----------|-------------|---------------------------|------|
| 1 | 6280-124 | Belt, Pump Drive, DD12 | 1 |
| 2 | 6280-405 | Eccentric | 1 |
| 3 | 6280-125 | Assembly, Idler | 1 |
| 4 | 73010 | Screw, Set 1/4-20x1/4 | 2 |
| 5 | 73039 | Screw, Set, 1/4-20x3/16 | 1 |
| 6 | 6280-228 | Chain, Drive | 1 |
| 7 | 73215 | Washer, External Lock 3/8 | 1 |
| 8 | 73218 | Bolt, HHCS, 3/8-24x.75 | 1 |
| 9 | 6280-229 | Link, Master, Drive Chain | 1 |
| 10 | 6280HD-131 | Key, Eccentric | 1 |

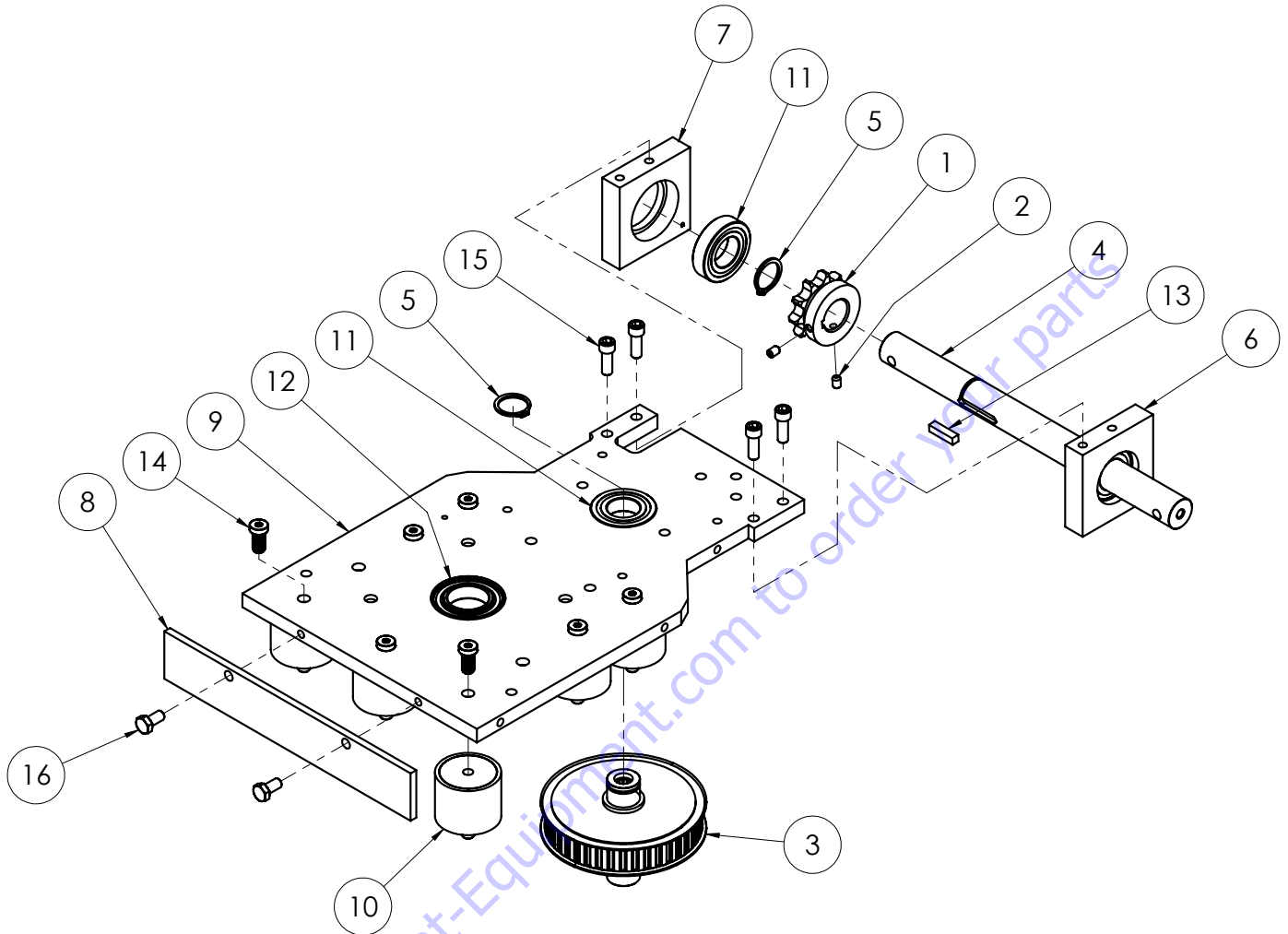
HYDRAULIC MOTOR



| ITEM NO. | PART NUMBER | DESCRIPTION | QTY. |
|----------|-------------|--------------------------------|------|
| 1 | 6280-226 | Bolt, Hex Head Cap 5/16-18x5/8 | 1 |
| 2 | 6280-225 | Spacer, Hydraulic Motor | 1 |
| 3 | 6280-220A | Motor, Hydraulic | 1 |
| 4 | 71115 | Bearing, 1x2x1/2 | 1 |
| 5 | 6280-221 | Connector, Hydraulic Motor | 2 |
| 6 | 6280-223 | Key, Shaft, Hydraulic Motor | 1 |
| 7 | 401541 | Sprocket, Axle, Heavy Duty | 1 |
| 8 | 73222 | Bolt, Flange 3/8-16 x 1 | 4 |
| 9 | 73010 | Screw, Set 1/4-20x1/4 | 2 |

Parts List and Diagrams

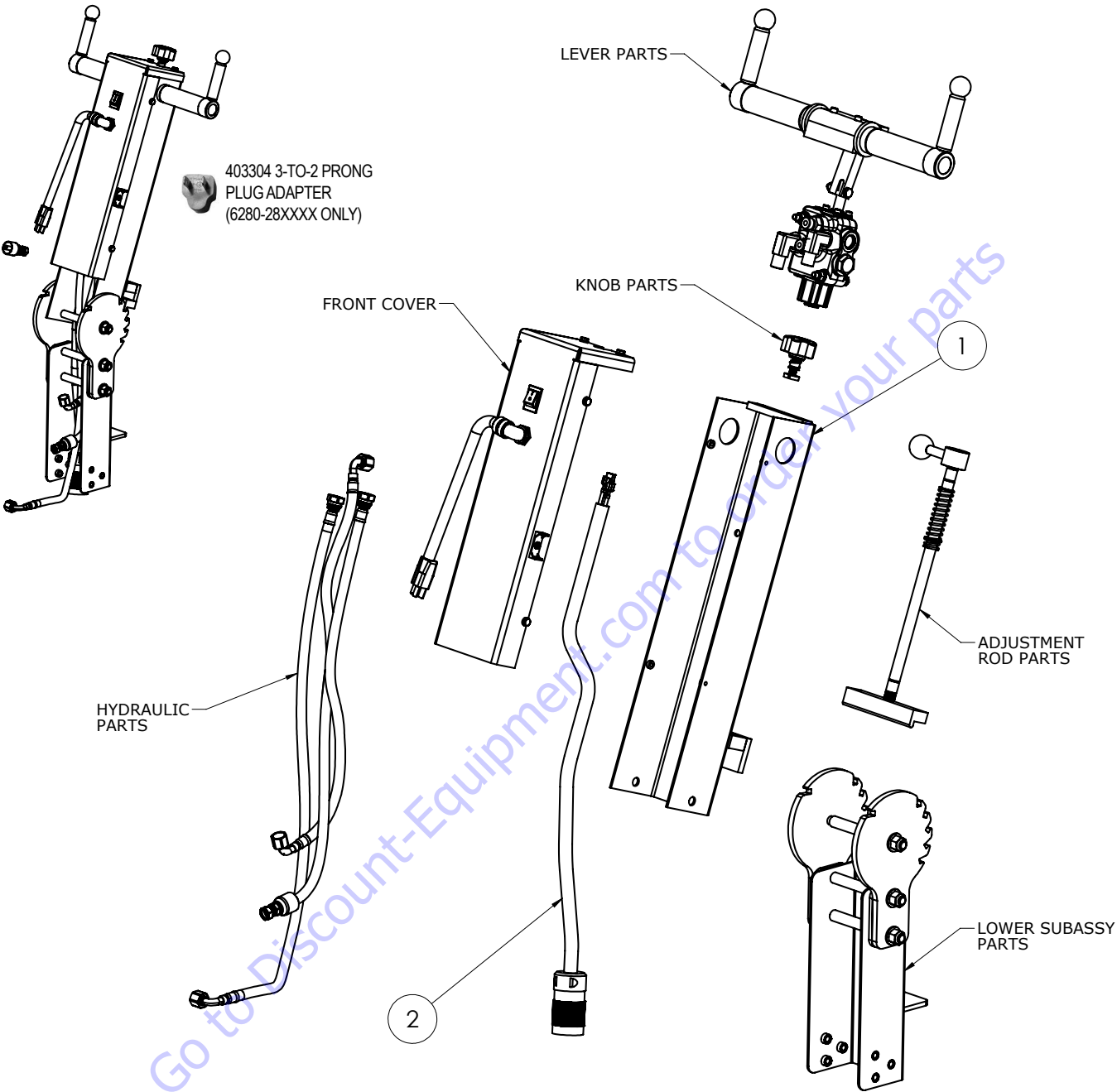
BASE



| ITEM NO. | 6280-10XXXX 6280-12XXXX 6280-23XXXX | 6280-11XXXX 6280-13XXXX 6280-15XXXX 6280-20XXXX 6280-26XXXX | DESCRIPTION | QTY. |
|----------|---|---|---|------|
| 1 | 401541 | 401541 | Sprocket, Axle, Heavy Duty | 1 |
| 2 | 73012 | 73012 | Screw, Set, 1/4-20 x 3/8 | 2 |
| 3 | 401627 | 401627 | Pump Drive Assembly, Splined | 1 |
| 4 | 6280-103-1 | 6280-103-1M | Shaft, Axle | 1 |
| 5 | 6280-103A | 6280-103A | Ring, Retaining, Ext, Axial, 1" | 3 |
| 6 | 6280-105L | 6280-105LM | Support, Axle Bearing, Left | 1 |
| 7 | 6280-105R | 6280-105RM | Support, Axle Bearing, Right | 1 |
| 8 | 6280-145 | 6280-145 | Cover, Front | 1 |
| 9 | 6280HD-107 | 401526 | Plate, Base, 6280HD | 1 |
| 10 | 70810 | 70810 | Isolator, Vibration | 7 |
| 11 | 71115 | 71115 | Bearing, 1x2x1/2 | 3 |
| 12 | 71132 | 71132 | Bearing, 1-1/4 | 1 |
| 13 | 73033 | 73033 | Key, 1/4x1/4x1 | 1 |
| 14 | 73217 | 73217 | Screw, Socket Head Cap, Low, 3/8-16 x 3/4 | 7 |
| 15 | 73310 | 73310 | Screw, Socket Head Cap, Grade 5 5/16-18x7/8 | 4 |
| 16 | 73332 | | Bolt, Hex Head Cap 5/16-18x5/8 | 2 |
| | | 74631 | Bolt, Hex Flange Bolt M6-16 | 2 |

Parts List and Diagrams

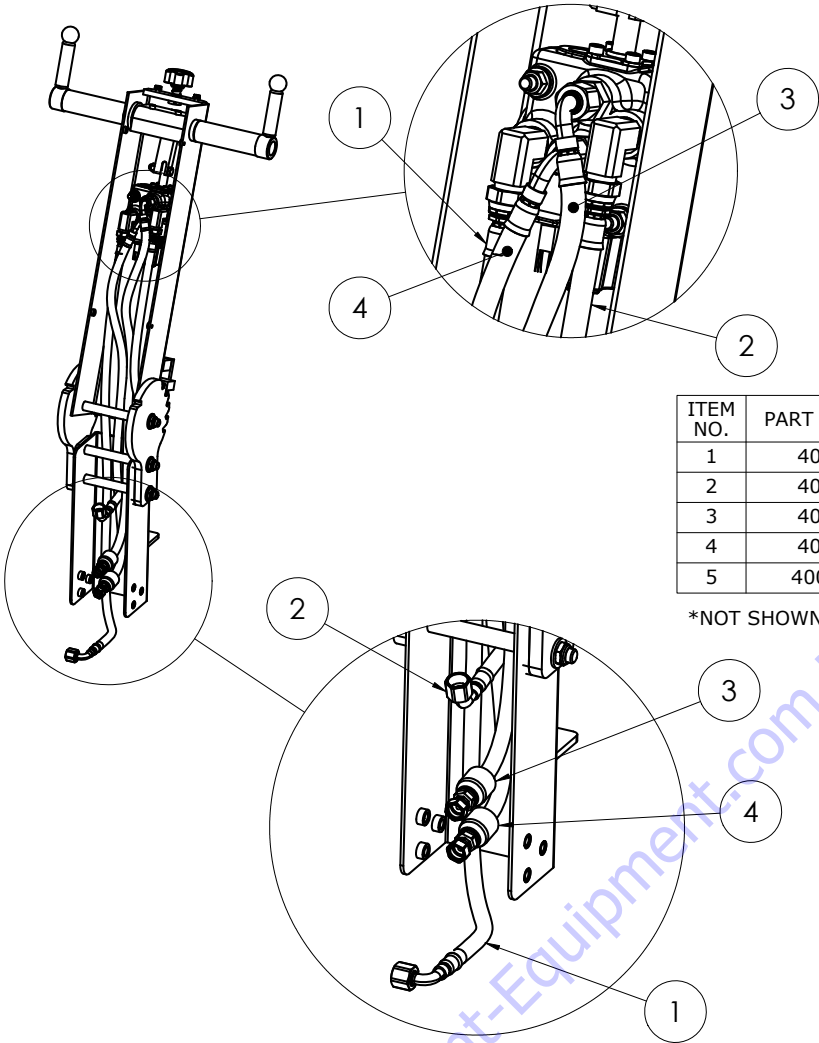
UPPER HANDLE ASSEMBLY



| ITEM NO. | 6280(HD)-10XXXX 6280(HD)-12XXXX 6280(HD)-23XXXX | 6280(HD)-11XXXX 6280(HD)-13XXXX 6280(HD)-15XXXX 6280(HD)-20XXXX 6280(HD)-26XXXX 6280HD-27XXXX 6280(HD)-28XXXX | DESCRIPTION | QTY. |
|----------|---|---|-------------------------------------|------|
| 1 | 6280-601 | 6280-601 | Weldment, Upper Handle | 1 |
| 2 | 401588 | | Cord, Handle, Commander, 6280, 110V | 1 |
| | | 401589 | Cord, Handle, Commander, 6280, 220V | |

Parts List and Diagrams

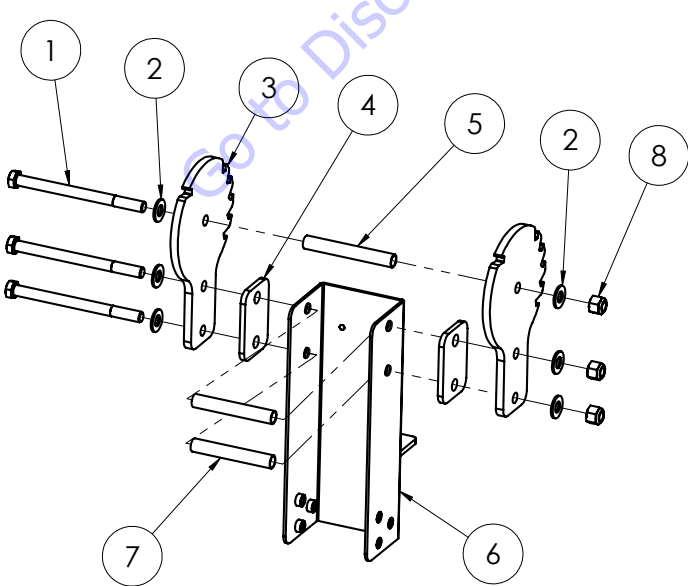
HYDRAULIC HOSES



| ITEM NO. | PART NUMBER | DESCRIPTION | QTY. |
|----------|-------------|----------------------------------|------|
| 1 | 400031 | Hose, Hydraulic, 1/4 x 40, F/90F | 1 |
| 2 | 400033 | Hose, Hydraulic, 3/8 x 36, F/F | 1 |
| 3 | 400032 | Hose, Hydraulic, 1/4 x 33, F/90F | 1 |
| 4 | 400032 | Hose, Hydraulic, 1/4 x 33, F/90F | 1 |
| 5 | 400097* | Wrap, Kevlar | 21" |

*NOT SHOWN

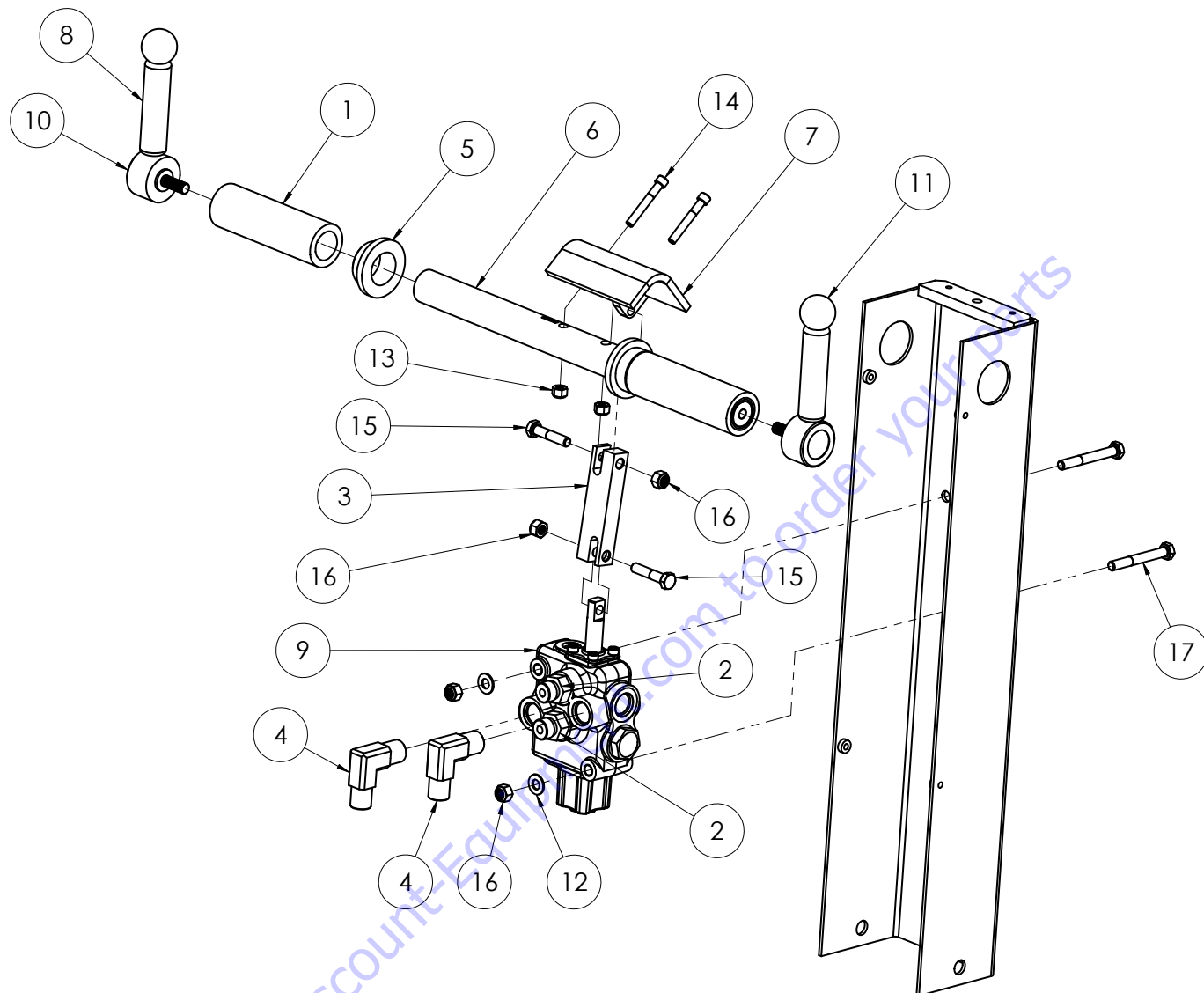
LOWER SUB-ASSEMBLY



| ITEM NO. | PART NUMBER | DESCRIPTION | QTY. |
|----------|-------------|-----------------------------|------|
| 1 | 400056 | Bolt, Hex Head 1/2-13x6-1/2 | 3 |
| 2 | 73424 | Washer, Flat, Zinc SAE 1/2 | 6 |
| 3 | 6280-600 | PLATE, INDEX, HANDLE | 2 |
| 4 | 400077 | Gasket, Handle | 2 |
| 5 | 6280-618 | Tube, Spacer, Long | 1 |
| 6 | 401629 | Handle, Lower, Rack Pins | 1 |
| 7 | 6280-619 | Spacer Tube, Short | 2 |
| 8 | 73402 | Nut, Nylock 1/2-13 | 3 |

Parts List and Diagrams

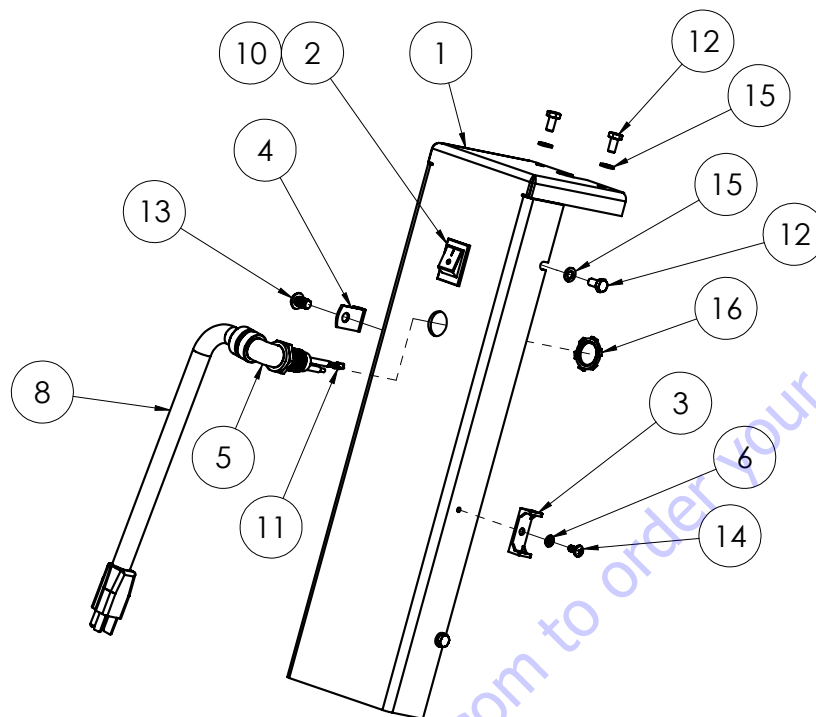
LEVER AND WELDMENT



| ITEM NO. | PART NUMBER | DESCRIPTION | QTY. |
|----------|-------------|----------------------------------|------|
| 1 | 400024 | Grip, Foam, 1" | 2 |
| 2 | 400034 | Fitting, FF1231-06-08 | 2 |
| 3 | 401434 | Linkage, Valve, Handle | 1 |
| 4 | 5280-118 | Fitting, 90 Degree | 2 |
| 5 | 6280-607 | Bushing, Handle Bar | 2 |
| 6 | 6280-608 | Weldment, Handle Bar | 1 |
| 7 | 6280-613 | Bracket, Valve Connector | 1 |
| 8 | 70623 | Grip, Foam | 2 |
| 9 | 70624 | Valve, Single Spool, Tapered | 1 |
| 10 | 70636 | Lever, Adjustable, Right Hand | 1 |
| 11 | 70637 | Lever, Adjustable, Left Hand | 1 |
| 12 | 73351 | Washer, Flat, 5/16, SAE | 2 |
| 13 | 73008 | Nut, Nylock 1/4-20 | 2 |
| 14 | 73066 | Bolt, SHCS, 1/4-20x1.75 | 2 |
| 15 | 73334 | Bolt, Hex Head Cap 5/16-18x1-1/2 | 2 |
| 16 | 73322 | Nut, Nyloc, 5/16-18 | 4 |
| 17 | 73327 | Bolt, Hex Head Cap 5/16-18x2 1/2 | 2 |

Parts List and Diagrams

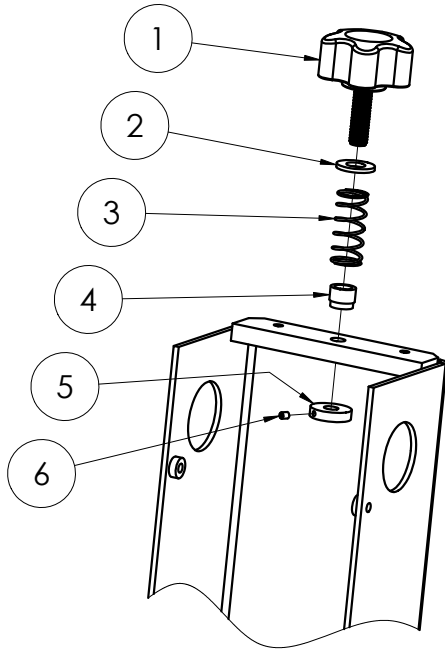
FRONT COVER



| ITEM NO. | 6280(HD)-10XXXX 6280(HD)-12XXXX 6280(HD)-23XXXX | 6280(HD)-11XXXX 6280(HD)-13XXXX 6280(HD)-15XXXX 6280(HD)-20XXXX 6280(HD)-26XXXX | 6280(HD)-27XXXX | DESCRIPTION | QTY. |
|----------|---|---|-----------------|---|------|
| 1 | 6280-602 | 6280-602 | 6280-602 | Cover, Upper Handle | 1 |
| 2 | 6280-207 | 6280-207 | 6280-207 | Switch, On-Off | 1 |
| 3 | 6280-404 | 6280-404 | 6280-404 | Holder, Blade Wrench | 1 |
| 4 | 72873 | 72873 | 72873 | 3/8 Cable Clamp | 1 |
| 5 | 401682 | 401682 | 401682 | Connector, 1/2", 90 Degree | 1 |
| 6 | 74413 | 74413 | 74413 | Washer, Internal Lock #10 | 1 |
| 7 | 73351 | 73351 | 73351 | Washer, Flat, 5/16, SAE | 1 |
| 8 | 6280-168 | | | Cord, Power, New Style | 1 |
| | | 401590 | | Cord, Line, Kommander, 6280, 220V | |
| | | | 402839 | Cord, Power, UK1-13P, BS1363A, Angle Plug, 13A 250 Volt | |
| 10 | 92819 | 92819 | 92819 | Disconnect, Quick, Nylon, 16-14 Gauge | 2 |
| 11 | 72812 | 72812 | 72812 | Disconnect, 12-10 Gauge, Female, Nylon | 1 |
| 12 | 74630 | 74630 | 74630 | Bolt, Hex Head Cap M6-12 8.8 | 6 |
| 13 | 73301 | 73301 | 73301 | Bolt, Button Head Socket Cap 5/16-18x1/2 | 1 |
| 14 | 74406 | 74406 | 74406 | Screw, Phillips Pan Head 10-32x3/8 | 1 |
| 15 | 74619 | 74619 | 74619 | Washer, Lock, M6 | 6 |
| 16 | 73401 | 73401 | 73401 | Nut, Strain Relief, Steel, 1/2" | 1 |

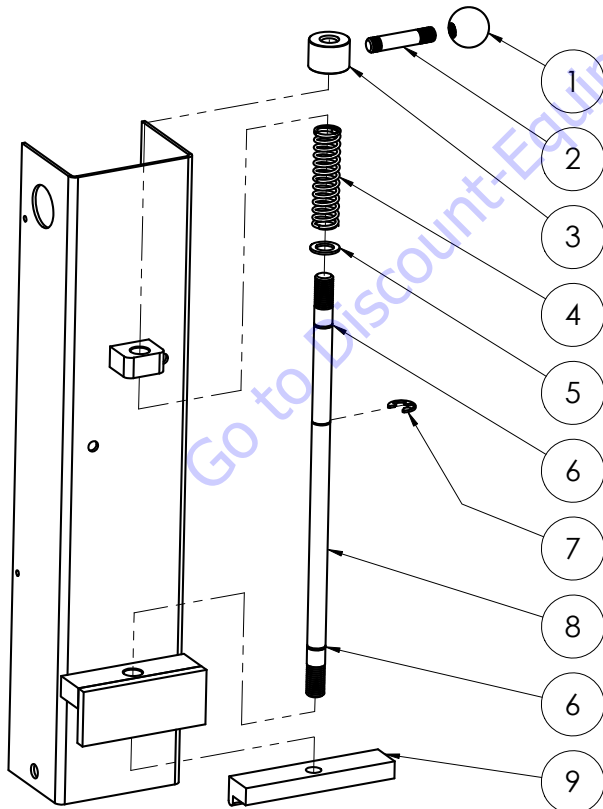
Parts List and Diagrams

KNOB



| ITEM NO. | PART NUMBER | DESCRIPTION | QTY. |
|----------|-------------|----------------------------------|------|
| 1 | 70638 | Knob, Adjustable, 1-1/4" | 1 |
| 2 | 73263 | Washer, Flat SAE Zinc 3/8 | 1 |
| 3 | 402290 | Spring, .66"OD x 1.50"L x .049"w | 1 |
| 4 | 402256 | Sleeve, Knob, Commander Handle | 1 |
| 5 | 401997 | Stopper, Speed Control | 1 |
| 6 | 400340 | Screw, 6-32 x 3/16 SSS CP | 1 |
| 7 | 6280-606 | Handle, Ball | 1 |
| 8 | 73401 | Nut, Strain Relief, Steel, 1/2" | 1 |

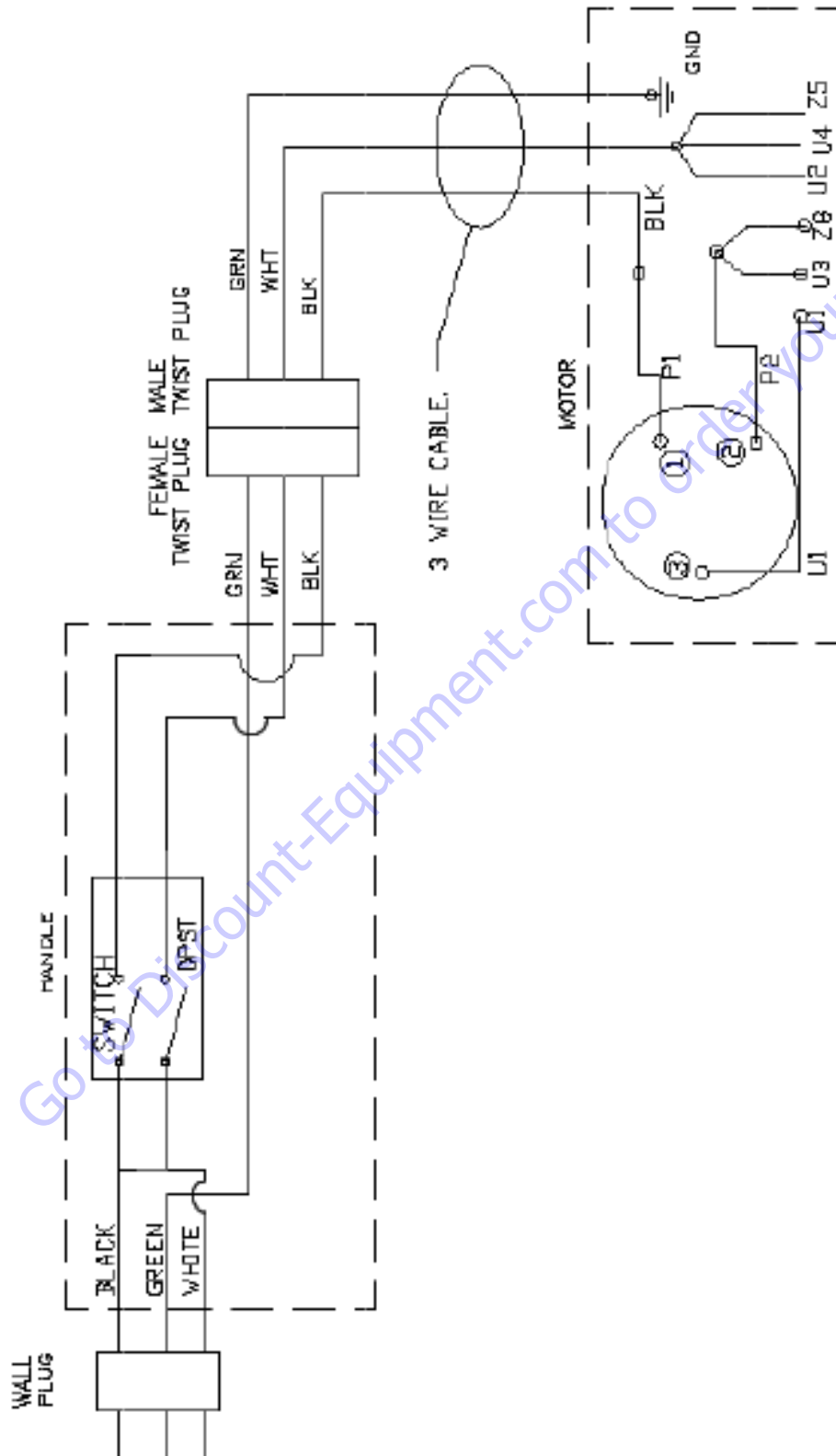
ADJUSTMENT ROD



| ITEM NO. | PART NUMBER | DESCRIPTION | QTY. |
|----------|-------------|------------------------------------|------|
| 1 | 6280-606 | Handle, Ball | 1 |
| 2 | 92800-98 | Rod, Adjustment, Short | 1 |
| 3 | 92800-99 | Collar, Adjustment Rod | 1 |
| 4 | 92800-12 | Spring, Adjustment, 3.5" | 1 |
| 5 | 402201 | Washer, .625 ID x 1.000 OD | 1 |
| 6 | 402197 | O-ring, .489 ID X .629 OD X .070 W | 2 |
| 7 | 402200 | E-Clip, Shaft, .625 | 1 |
| 8 | 402219 | Rod, Adjustment, Large, 3X Groove | 1 |
| 9 | 6280-611 | Lock, Adjustment Bar | 1 |

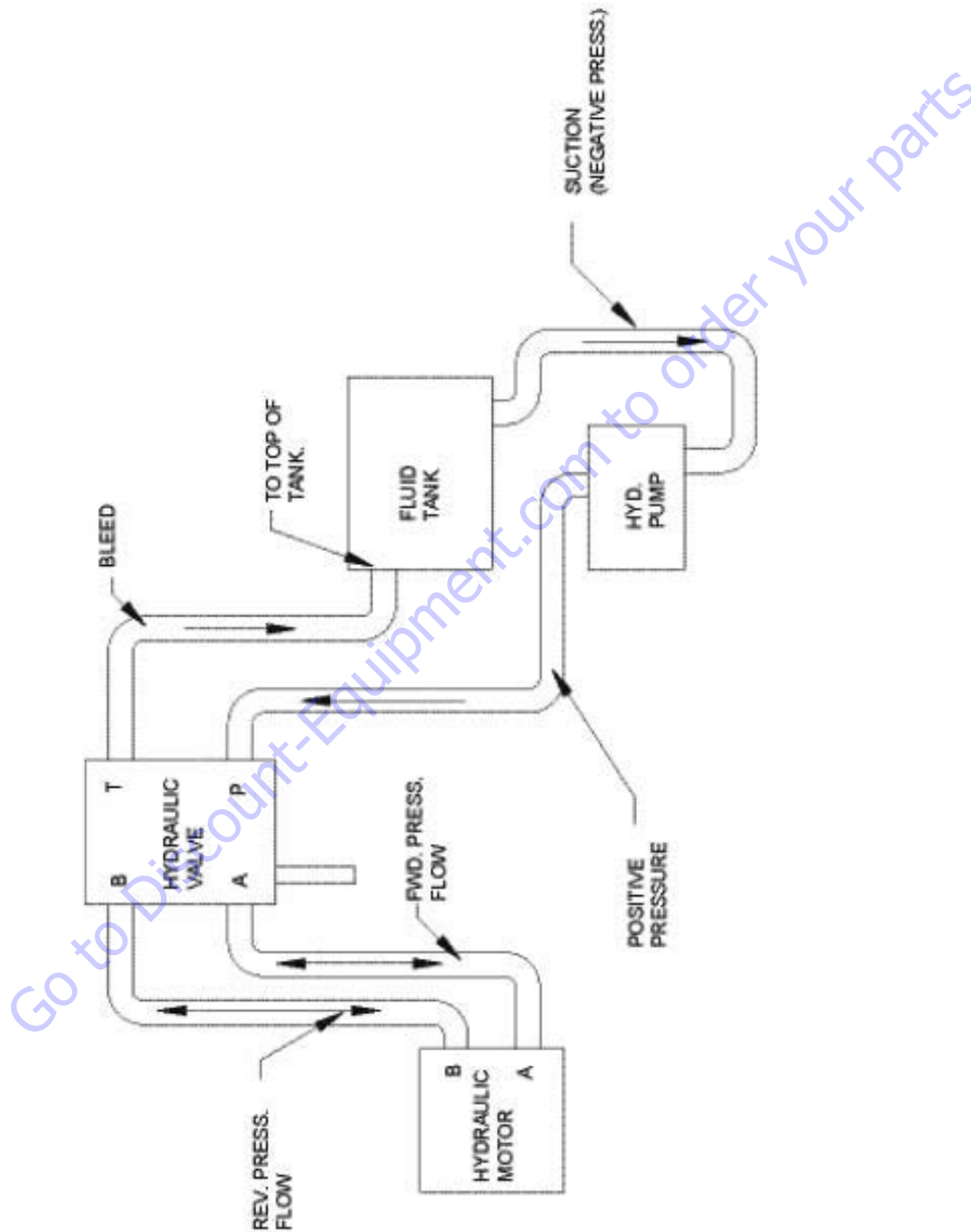
Parts List and Diagrams

115V WIRING



Parts List and Diagrams

HYDRAULICS



We sell worldwide for the brands: Genie, Terex, JLG, MultiQuip, Mikasa, Essick, Whiteman, Mayco, Toro Stone, Diamond Products, Generac Magnum, Airman, Haulotte, Barreto, Power Blanket, Nifty Lift, Atlas Copco, Chicago Pneumatic, Allmand, Miller Curber, Skyjack, Lull, Skytrak, Tsurumi, Husquvarna Target, , Stow, Wacker, Sakai, Mi-T- M, Sullair, Basic, Dynapac, MBW, Weber, Bartell, Bennar Newman, Haulotte, Ditch Runner, Menegotti, Morrison, Contec, Buddy, Crown, Edco, Wyco, Bomag, Laymor, Barreto, EZ Trench, Bil-Jax, F.S. Curtis, Gehl Pavers, Heli, Honda, ICS/PowerGrit, IHI, Partner, Imer, Clipper, MMD, Koshin, Rice, CH&E, General Equipment, ,AMida, Coleman, NAC, Gradall, Square Shooter, Kent, Stanley, Tamco, Toku, Hatz, Kohler, Robin, Wisconsin, Northrock, Oztec, Toker TK, Rol-Air, Small Line, Wanco, Yanmar



www.Discount-Equipment.com

Go to Discount-Equipment.com to order your parts



9250 Xylon Avenue N • Minneapolis, MN 55445 • U.S.A.
Toll-free 800-245-0267 • Phone 763-315-5300 • Fax 800-648-7124 • Fax 763-535-8255
Web Site: www.nationalequipment.com • E-Mail: info@nationalequipment.com