



SERVICE/PARTS MANUAL

MODELS: MS1 and MS2



SAW DEVIL[®] Portable / Professional Masonry Saw

A 100% employee-owned American manufacturer



Table of Contents

Masonry Saw

TABLE OF CONTENTS	3
USER INFORMATION	4-6
Foreword	4
Useful Information	5
Warranty	6
HEALTH & SAFETY	7-10
Safety	7
Safety Precautions	8-9
TECHNICAL DATA	10-15
Specifications	11
Sound and Vibration Measurements	12
Hardware Key	13
Torque Chart - Imperial	14
Torque Chart - Metric	15
MAINTENANCE	16-21
Important	16
Service Check List	17
Troubleshooting	18-20
Service Record Chart	21
EXPLODED VIEWS AND PARTS LISTS	21-51
Portable - Lower Body Assembly	24-25
Portable Electric - Cutting Head Assembly	26-29
Portable Gas - Cutting Head Assembly	30-35
Portable - Foot Pedal Assembly	36-37
Portable - Leg Assembly	38-39
Professional - Lower Body Assembly	40-43
Professional Gas - Cutting Head Assembly	44-49
Professional Electric - Cutting Head Assembly	50-53
Portable/Professional Gas - Water Pump Assembly	54-55
Decal Identification - Portable/Professional	56-57
California Proposition 65	IBC

User Information

Foreword

These instructions include:

- Safety regulations
- Operating instructions
- Maintenance instructions

These instructions have been prepared for operation on the construction site and for the maintenance engineer.

These instructions are intended to simplify operation of the machine and to avoid malfunctions through improper operation.

Observing the maintenance instructions will increase the reliability and service life of the machine when used on the construction site and reduce repair costs and downtimes.

Always keep these instructions at the place of use of the machine.

Only operate the machine as instructed.

Observe the safety regulations as well as the guidelines of the civil engineering trade association. Observe the safety rules for the operation and the pertinent regulations for the prevention of accidents.

Stone Construction Equipment, Inc. is not liable for the function of the machine when used in an improper manner or for other than the intended purpose.

Operating errors, improper maintenance and the use of incorrect operating materials are not covered by the warranty.

The above information does not extend the warranty and liability conditions of business of Stone Construction Equipment, Inc.

1. Machine Type: _____

Machine S/N: _____

2. Engine Type: _____

Engine S/N: _____

3. VIN: _____

4. Purchase Date: _____

5. Dealer/Distributor Information:

Name: _____

Address: _____

Phone #: _____

Fax #: _____

6. Battery
Manufacturer: _____

Battery Type: _____

Battery S/N: _____

Location of above information:

1. Information on S/N tag.
2. Information on engine tag.
3. Information on S/N tag - if applicable.
4. Date you purchased machine.
5. Dealer machine was purchased from.
6. Information on battery and battery warranty card.

Stone Construction Equipment, Inc.
P.O. Box 150, Honeoye, New York 14471
Phone: (800) 888-9926
Fax: (585) 229-2363

Limited Warranty

The Manufacturer warrants that products manufactured shall be free from defects in material and workmanship that develop under normal use for a period of 90 days for concrete vibrators and electric pumps, one year for Rhino®, Bulldog®, WolfPac Rollers™, trowels, Stompers®, saws, forward plates, engine powered pumps, Lift Jockey™, Mortar Buggy™ and 6 months for all other products from the date of shipment. The foregoing shall be the exclusive remedy of the buyer and the exclusive liability of the Manufacturer. Our warranty excludes normal replaceable wear items, i.e. gaskets, wear plates, seals, O-rings, V-belts, drive chains, clutches, etc. Any equipment, part or product which is furnished by the Manufacturer but manufactured by another, bears only the warranty given by such other manufacturer. (The Manufacturer extends the warranty period to "Lifetime" for the drum bearings and seals for the mortar mixers, and agrees to furnish, free of charge, the bearings and seals only upon receipt of the defective parts. The warranty is two years for eccentric bearings on the forward plate compactors, mortar and plaster mixer drums, trowel gearboxes, three years on the Bulldog trench roller microprocessor (ECIB) and five years on the Bulldog trench roller eccentric bearings.) A Warranty Evaluation Form must accompany all defective parts. Warranty is voided by product abuse, alterations, and use of equipment in applications for which it was not intended, use of non-manufacturer parts, or failure to follow documented service instructions. The foregoing warranty is exclusive of all other warranties whether written or oral, expressed or implied. No warranty of merchantability or fitness for a particular purpose shall apply. The agents, dealer and employees of Manufacturer are not authorized to make modification to this warranty, or additional warranties binding on Manufacturer. Therefore, additional statements, whether oral or written, do not constitute warranty and should not be relied upon.

The Manufacturer's sole responsibility for any breach of the foregoing provision of this contract, with respect to any product or part not conforming to the Warranty or the description herein contained, is at its option (a) to repair, replace or refund such product or parts upon the prepaid return thereof to location designated specifically by the Manufacturer. Product returns not shipped prepaid or on an economical transportation basis will be refused (b) as an alternative to the foregoing modes of settlement - the Manufacturer's dealer to repair defective units with reimbursement for expenses, except labor, and be reviewed with the Manufacturer prior to repair. A Warranty Evaluation Form must accompany all warranty claims.

Except as set forth hereinabove and without limitation of the above, there are no warranties or other affirmations which extends beyond the description of the products and the fact hereof, or as to operational efficiency, product reliability or maintainability or compatibility with products furnished by others. In no event whether as a result of breach of contract or warranty or alleged negligence, shall the Manufacturer be liable for special or consequential damages including but not limited to: Loss of profits or revenues, loss of use of the product or any associated product, cost of capital, cost of substitute products, facilities or services or claims of customers.

No claim will be allowed for products lost or damaged in transit. Such claims should be filed with the carrier within fifteen days.

Effective January 2004.

Stone Construction Equipment, Inc. • 8662 Main Street, P. O. Box 150 • Honeoye, NY 14471-0150
Phone: 1-800-888-9926 • 1-585-229-5141 Fax: 1-585-229-2363
www.stone-equip.com • e-mail: sceny@stone-equip.com

SAFETY

These machines are designed to carry out the function of flat sawing material of the non-cohesive, bituminous and granular varieties.

If used correctly they will provide an effective and safe means of flat sawing and meet the appropriate performance standards.

It is essential that the operator/driver of the machine is adequately trained in its safe operation, be authorized to operate it, and have sufficient knowledge of the machine to ensure that it is in full working order, before being put to use.

Health & Safety

Safety Precautions

Before using this equipment, study this entire manual to become familiar with its operation. Do not allow untrained or unauthorized personnel, especially children, to operate this equipment. Use only factory authorized parts for service.

When warning decals are destroyed or missing, contact the Manufacturer immediately at 1-800-888-9926 for replacement. For the safety of yourself and others, it is imperative that the following rules are observed. Failure to do so may result in serious injury or death.



This notation appears before warnings in the text. It means that the step which follows must be carried out to avoid the possibility of personal injury or death. These warnings are intended to help the technician avoid any potential hazards encountered in the normal service procedures. We strongly recommend that the reader takes advantage of the information provided to prevent personal injury or injury to others.



USE COMMON SENSE WHEN HANDLING FUELS

Transport and handle fuel only when contained in approved safety container.

Do not smoke when refueling or during any other fuel handling operation.

Do not refuel while the engine is running or while it is still hot.

If fuel is spilled during refueling, wipe it off from the engine immediately and discard the rag in a safe place.

Do not operate the equipment if fuel or oil leaks exist - repair immediately.

Never operate this equipment in an explosive atmosphere.



Ear protection required when operating this equipment.

Health & Safety

Safety Precautions



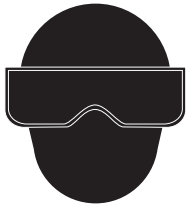
Avoid contact with hot exhaust systems and engines.

Allow engine to cool before performing any repairs.



Never operate unit in a poorly ventilated or enclosed area.

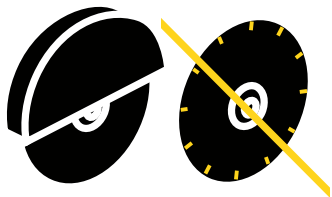
Avoid prolonged breathing of exhaust gases.



Eye protection required when operating this equipment.



Head protection required when operating this equipment.



Never operate this equipment without all guards in place.

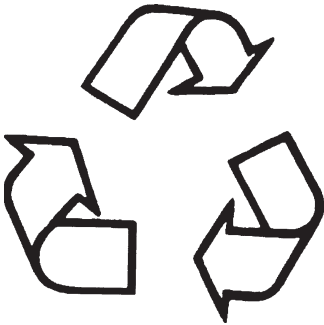
Health & Safety

Safety Precautions



PRACTICE SAFE MAINTENANCE

- Understand service procedure before doing work. Keep area clean and dry.
- Never lubricate, service or adjust machine while it is moving. Keep hands, feet, and clothing from power-driven parts. Disengage all power and operate controls to relieve pressure. Lower equipment to the ground. Stop the engine. Remove the key. Allow machine to cool.
- Securely support any machine elements that must be raised for service work.
- Keep all parts in good condition and properly installed. Repair damage immediately. Replace worn or broken parts. Remove any buildup of grease, oil, or debris.
- Disconnect battery ground cable (-) before making adjustments on electrical systems or welding on machine.



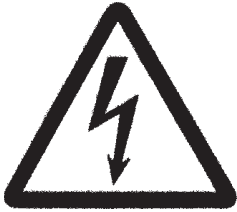
DISPOSE OF WASTE PROPERLY

- Improperly disposing of waste can threaten the environment and ecology. Potentially harmful waste used with equipment includes items such as oil, fuel, coolant, brake fluid, filters, and batteries.
- Use leakproof containers when draining fluids. Do not use food or beverage containers that may mislead someone into drinking from them.
- Do not pour waste onto the ground, down a drain, or into any water source.
- Air conditioning refrigerants escaping into the air can damage the Earth's atmosphere. Government regulations may require a certified air conditioning service center to recover and recycle used air conditioning refrigerants.
- Inquire on the proper way to recycle or dispose of waste from your local environmental or recycling center.

SAFETY DECALS - FOR THE SAFETY OF YOURSELF AND OTHERS REPLACE ANY DAMAGED OR MISSING SAFETY DECALS.

Health & Safety

Battery Charging



- Read and understand the Maintenance Section of this manual before attempting to charge the battery.
- Before using a charger, read all the manufacturers' instructions for, and caution markings on (1) charger and (2) battery.



- Wear personal protective equipment including gloves and complete eye protection that protects eyes from all angles.
- Never work alone with electrical equipment. Make sure that someone is nearby to give assistance if you need help.
- Reduce explosive gas (hydrogen). Batteries give off explosive gases when charging and serious injuries can occur. Be sure the area around the battery is clean and well ventilated before and during the charging process.



- Avoid flames and sparks near the battery. Do not smoke or weld near the battery. Keep flames, matches, lighters, cigarettes or other ignition sources away from the battery.
- Use only cables and clamps that are well insulated and in good condition to make connections between battery and charger.



- Exercise caution in using metal tools on or near the battery to reduce the risk of short circuits that may cause battery explosions. Do not place tools on top of the battery.
- Avoid overcharging batteries. Some chargers can overcharge a battery if left connected for an extended period of time resulting in loss of water and creation of hydrogen gas. Rising battery temperature and vigorous gassing are clear indications of excessive charging which may reduce battery life.
- So called FAST (also known as High Rate or Boost) chargers should be used with caution. Do not use a fast charger for more than 30 minutes on any battery.
- In very cold weather, a discharged battery may freeze. Never charge a frozen battery. Gases may form which can crack the case and release battery acid.



- Avoid contact with corrosion due to battery acid. Battery posts may have acid corrosion that may be harmful to eyes and skin.
- If the battery is to be removed and/or replaced, always use a battery carrier. Carrying the battery by hand may put pressure on its ends, causing battery acid to be forced out the vent caps. Avoid tipping the battery, which may cause the release of battery acid through the vent caps. Avoid dropping the battery. Batteries can be heavy and may cause injuries if dropped. Dropping the battery can crack the case and release battery acid.



- Be sure to wash your hands with soap and water after servicing or handling the battery. This will help neutralize any acid you may have contacted. Always have plenty of fresh water and soap nearby in case battery acid contacts the eyes, skin or clothing. If battery acid contacts the skin or clothing, wash immediately with soap and water. If battery acid enters the eye, immediately flood eye with cold running water for at least fifteen (15) minutes and get medical help immediately.

Technical Data

Specifications - Block Saws

Model	MS1	MS2
Dimensions		
Weight (kg)	190 lbs (87.3)	445 lbs (216)
Dimensions (LxWxH)† (cm)	37" x 21" x 33" (94 x 54 x 84)	48" x 25" x 71" (122 x 64 x 180) 62.5" high on electric
Blade Capacity (cm)	14" (35.6)	14", 20" (35.6 / 50.8) 20" standard
Cut Depth (cm)	5" w/ 14" blade (12.7)	5" w/ 14" blade (12.7) 8" w/ 20" blade (20.3)
Water Pan Dimensions (LxW)	31" x 18" (78 x 46)	40" x 24" (101 x 61)
Conveyor Table (L x W)	10" x 19" (25.4 x 48)	16.5" x 25" (42 x 64)
Table Height	35" (89) (with leg kit)	35" (89)
Operating System		
Engines (kW)	1 1/2 hp Baldor (1.2) 2 hp Baldor (1.5) 5.5 hp Honda cyclone(4.1) 6 hp Robin cyclone (4.5)	3 hp Baldor (2.3) - 230V only 5 hp Baldor (3.8) - 230V only 9hp Robin cyclone (6.7) 8 hp Honda cyclone (5.9) 11 hp Honda cyclone (8.2)
Air Filter	Dry Element (Cyclone on Honda and Robin)	Dry Element (Cyclone on Honda and Robin)
Engine (Hz)	3450 rpm (57.5) Electric 3600 rpm (60) Gas	3450 rpm (57.5) Electric 3600 rpm (60) Gas
Voltage	115 - 230	230
Water System	Corrosion resistant electric water pump on electric models, Belt driven pump on gas models, Brass fittings	Corrosion resistant electric water pump on electric models, Belt driven pump on gas models, Brass fittings
Performance		
Blade Shaft Bearings size (mm)	Greasable pillow block sealed 1" (25.4)	Greasable pillow block sealed 1" (25.4)
Blade Arbor (mm)	1" (25.4)	1" (25.4)
Arbor Height	11.5" (29.2)	24" (61)
Standard Features	Stay-level cast aluminum blade guard with 210° of blade coverage, 45°/90° miter guide, cast aluminum conveyor cart, padded blade lever	Stay-level cast aluminum blade guard with 210° of blade coverage, 45°/90° miter guide, cast aluminum conveyor cart, bi-directional forklift brackets, heavy-duty hand crank, padded blade lever
Options	115V or 230V plugs, Foot pedal kit	230V plug, 14" or 20" Blade guard
Warranty	1 year limited	1 year limited

Technical Data

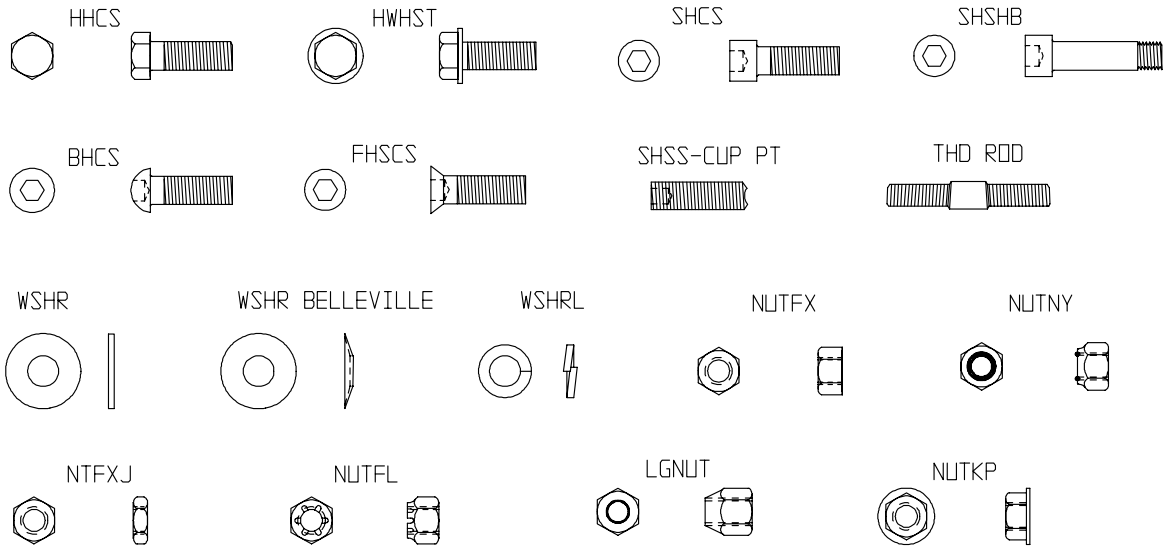
Machine Sound and Vibration Measurements

Sound and Vibration Measurements

Sound Pressure Values as measured are per the following:				
Noise 1	Model/Configuration			
Sound Pressure	MS1 Electric 14"	MS1 Gas 14"	MS2 Electric 20"	MS2 Gas 20"
at operator's ear	89dBA	100dBA	97dBA	103dBA
1.6 meters above floor 1.0 meter from surface of machine at 9 o'clock from operator	85dBA	96dBA	98dBA	104dBA
RMS acceleration on the handle were measured per the following:				
meter/sec ² RMS	1.05	1.10	0.84	1.31
Sound and vibration values have been taken in accordance to the EEC machine regulation (edition 93/68/EEC)				
Sound Pressure measurements were taken with Simpson model 886-2 type 2 meter, calibrated 2/21/97				
Acceleration measurements were taken with Quest Tech model VI-100 meter, calibrated 4/17/96				
Sound and vibration measurements were obtained with machine operating at maximum engine speed of 3450 RPM.				
Units had blades mounted and measurements were taken out of cuts.				

Technical Data

Hardware Identification



VR005A

ZN = ZINC PLATED
BLK = BLACK OXIDE FINISH

Technical Data

Torque Chart - Imperial

SAE GRADE 5 Coarse Thread, Zinc-Plated		
SIZE	TORQUE	
	ft. lbs.	Nm
1/4 - 20 (.250)	6	8
5/16 - 18 (.3125)	13	18
3/8 - 16 (.375)	23	31
7/16 - 14 (.4375)	37	50
1/2 - 13 (.500)	57	77
9/16 - 12 (.5625)	82	111
5/8 - 11 (.625)	112	152
3/4 - 10 (.750)	200	271
7/8 - 9 (.875)	322	436.5
1 - 8 (1.000)	483	655

SAE GRADE 8 Coarse Thread, Zinc-Plated		
SIZE	TORQUE	
	ft. lbs.	Nm
1/4 - 20 (.250)	9	12
5/16 - 18 (.3125)	18	24
3/8 - 16 (.375)	33	45
7/16 - 14 (.4375)	52	70
1/2 - 13 (.500)	80	108
9/16 - 12 (.5625)	115	156
5/8 - 11 (.625)	159	215
3/4 - 10 (.750)	282	382
7/8 - 9 (.875)	454	615
1 - 8 (1.000)	682	925

SAE GRADE 5 Fine Thread, Zinc-Plated		
SIZE	TORQUE	
	ft. lbs.	Nm
1/4 - 28 (.250)	7	10
5/16 - 24 (.3125)	14	19
3/8 - 24 (.375)	26	35
7/16 - 20 (.4375)	41	56
1/2 - 20 (.500)	64	87
9/16 - 18 (.5625)	91	123
5/8 - 18 (.625)	128	173
3/4 - 16 (.750)	223	302
7/8 - 14 (.875)	355	481
1 - 12 (1.000)	529	717
1 - 14 (1.000)	541	733

SAE GRADE 8 Fine Thread, Zinc-Plated		
SIZE	TORQUE	
	ft. lbs.	Nm
1/4 - 28 (.250)	10	14
5/16 - 24 (.3125)	20	27
3/8 - 24 (.375)	37	50
7/16 - 20 (.4375)	58	79
1/2 - 20 (.500)	90	122
9/16 - 18 (.5625)	129	175
5/8 - 18 (.625)	180	244
3/4 - 16 (.750)	315	427
7/8 - 9 (.875)	501	679
1 - 12 (1.000)	746	1011
1 - 14 (1.000)	764	1036

t-chrt_i.doc

Technical Data

Torque Chart - Metric

Monthly, inspect all hardware on this equipment and engine/motor. Loose hardware can contribute to early component failure and poor performance. Use the torque chart below as a general guideline and keep all hardware tight.

Note: Some hardware is used to retain parts that have to move freely for correct operation of this unit. The hardware for these items should be snug enough to prevent excessive play, yet loose enough to allow the parts to pivot freely.

Property Class 8.8

ZINC-PLATED

SIZE	Coarse Thread		Fine Thread	
	Nm	ft. lbs.	Nm	ft. lbs.
M6	9.9	7	10	7
M8	24	18	25	18
M10	48	35	49	36
M12	83	61	88	65
M14	132	97	140	103
M16	200	148	210	155
M20	390	288	425	313
M24	675	498	720	531

Property Class 10.9

ZINC-PLATED

SIZE	Coarse Thread		Fine Thread	
	Nm	ft. lbs.	Nm	ft. lbs.
M6	14	10	14	10
M8	34	25	35	26
M10	67	49	68	50
M12	117	86	125	92
M14	185	136	192	142
M16	285	210	295	218
M20	550	406	600	443
M24	950	701	1000	738

Property Class 12.9

ZINC-PLATED

SIZE	Coarse Thread		Fine Thread	
	Nm	ft. lbs.	Nm	ft. lbs.
M6	16.5	12	16.5	12
M8	40	30	42	31
M10	81	60	82	60
M12	140	103	150	111
M14	220	162	235	173
M16	340	251	350	258
M20	660	487	720	531
M24	1140	841	1200	885

Conversion Factor: 1 ft. lb. = 1.3558 Nm



IMPORTANT

THE PERSON ATTEMPTING ANY OF THE FOLLOWING MAINTENANCE TASKS, MUST BE AUTHORIZED TO DO SO AND HAVE READ AND UNDERSTOOD ALL SECTIONS WITHIN THIS MANUAL

ALL SAWS

- All gas saws set Engine RPM at 3600 +0 / -100 (no load).
- Check blade clamp hub face run-out with indicator and magnetic chuck. Run-out not to exceed .015".
- Check belt tension:
 - > MS1 Electric & Gas Belt deflection = .21 inches at 2.5 lbs. for used belt and 3.0 lbs for new belt.
 - > MS2 Electric & Gas Belt deflection = .19 inches at 3.5 lbs. for used belt and 4.5 lbs for new belt.
- Grease all pillow blocks.
- All guards in place, all hardware tight.
- Apply Never-Seize to acme screw--Pro Saw Only.
- Check cutting tables wheels are tight and rotating.
- Belts and pulleys in line.
- On gas units make sure kill switch is functional while running.
- Disconnect spark plug or unplug unit when servicing unit.

Maintenance

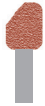
Troubleshooting

PROBLEM

CAUSE

REMEDY

UNEVEN SEGMENT WEAR



- (In wet cutting) Insufficient water (usually on one side of blade).
- Equipment defects also can cause the segments to wear unevenly.
- Saw head is misaligned.

- Flush water system.
- Check flow to both sides of blade.
- Replace bad bearings, worn arbor shaft or misalignment to spindle.
- Check alignment for squareness, both vertically and horizontally, of the saw blade.

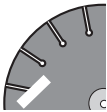
SEGMENT CRACKS



- Blade is too hard for material being cut.

- Use a blade with a softer bond/matrix.

SEGMENT LOSS



- Blade overheats because of lack of coolant (water or air).
- Core is worn from undercutting.
- Defective collars/flanges set blade out of alignment.
- Blade is too hard for material being cut.
- Blade is cutting out of round, causing a pounding motion.
- Improper blade tension.

- (Wet Cutting) Check water lines. Make sure flow is adequate on both sides of blade and there are no blockages. Use sufficient water to flush out the cut.
- (Dry Cutting) Run blade free of cut periodically to air cool.
- Clean collars/flanges or replace if they are under recommended diameter.
- Use proper blade specification for material being cut.
- Replace worn bearings; realign blade shaft or replace worn blade mounting arbor.
- When ordering blades match shaft speed of saw.
- Check spindle speed to ensure blade is running at correct RPM.
- Avoid twisting or turning blade in the cut.

Maintenance

Troubleshooting

PROBLEM

CAUSE

REMEDY

BLADE WOBBLER



- Blade is on a damaged or worn saw.
- Worn collar.
- Blade runs at an incorrect speed.
- Collar /flange diameters are not identical.
- Blade is bent as a result of dropping or twisting.

- Check for bad bearings, bent shaft, or worn mounting arbor.
- Check collars/flanges to make sure they are clean, flat and of correct diameter.
- Set engine at proper rpm.
- Use proper size blade collars/flanges.
- DO NOT USE bent blade. Contact blade manufacturer.

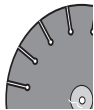
BLADE WILL NOT CUT



- Blade is too hard for material being cut.
- Blade has become dull.
- Blade does not cut material it was specified for.

- Select proper blade for material being cut.
- Sharpen by cutting on softer abrasive material to expose diamonds. If continually sharpening, the blade is too hard for the material being cut.
- Break-in on the material to be cut. If it does not dress itself, sharpen as you would a dull blade.

CRACKS IN CORE



- Blade flutters in cut as a result of losing blade tension.
- Blade specification is too hard for the material being cut.

- Tighten the blade shaft nut.
- Make sure blade is running at proper speed and that drive pin is functioning properly.
- Use a softer bond/matrix to eliminate stress.

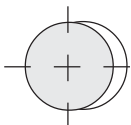
UNDERCUTTING THE CORE



- Abrasive wearing of the core faster than the segments.

- Use water to flush out fines generated during cutting
- Use wear-retardant cores.

ARBOR HOLE OUT-OF-ROUND



- Collars/flanges are not properly tightened, permitting blade to rotate or vibrate on the shaft.
- Collars/flanges are worn or dirty.
- Blade is not properly mounted.

- Make certain the blade is mounted on the proper shaft diameter. Tighten the shaft nut with a wrench to make certain that the blade is secure.
- Clean collars/flanges, make sure they are not worn.
- Tighten arbor nut.
- Make sure the pin hole slides over drive pin.

Maintenance

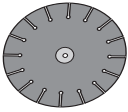
Troubleshooting

PROBLEM

CAUSE

REMEDY

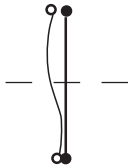
BLADE WORN OUT OF ROUND



- Shaft bearings are worn.
- Surges occur because engine is not properly tuned.
- Blade arbor hole is damaged from incorrectly mounting the blade.
- Bond/matrix is too hard for material.
- Blade is slipping, wearing one half of blade more than other.

- Install new blade shaft bearings or blade shaft, as required.
- Tune engine according to manufacturer's manual.
- If core is worn or arbor hole damaged, DO NOT USE. Contact blade manufacturer.
- Use proper blade. Consult blade manufacturer.
- Replace worn shaft or mounting arbor bushing.
- Make certain that drive pin is functioning.
- Tighten spindle nut.

LOSS OF TENSION



- Core overheating.
- Core overheating as a result of blade spinning on arbor.
- Core overheating from rubbing the material being cut.
- Unequal pressure at blade clamping collars/flanges.
- Blade is too hard for the material being cut.

- Make certain blade RPM is correct.
- Check water flow, distribution and lines.
- Tighten the blade shaft nut.
- Make certain the drive pin is functioning.
- Properly align the saw to square cut.
- Collars/flanges must be identical in diameter and the recommended size.
- Use a softer bond/matrix to reduce stress.

Maintenance

Service Record Chart

Model No. _____			Serial No. _____			
Note: See Engine Manual for frequency and part numbers						
Date	Engine Oil	Engine Oil Filter	Air Filter	Fuel Filter	Spark Plugs	Transmission Fluid



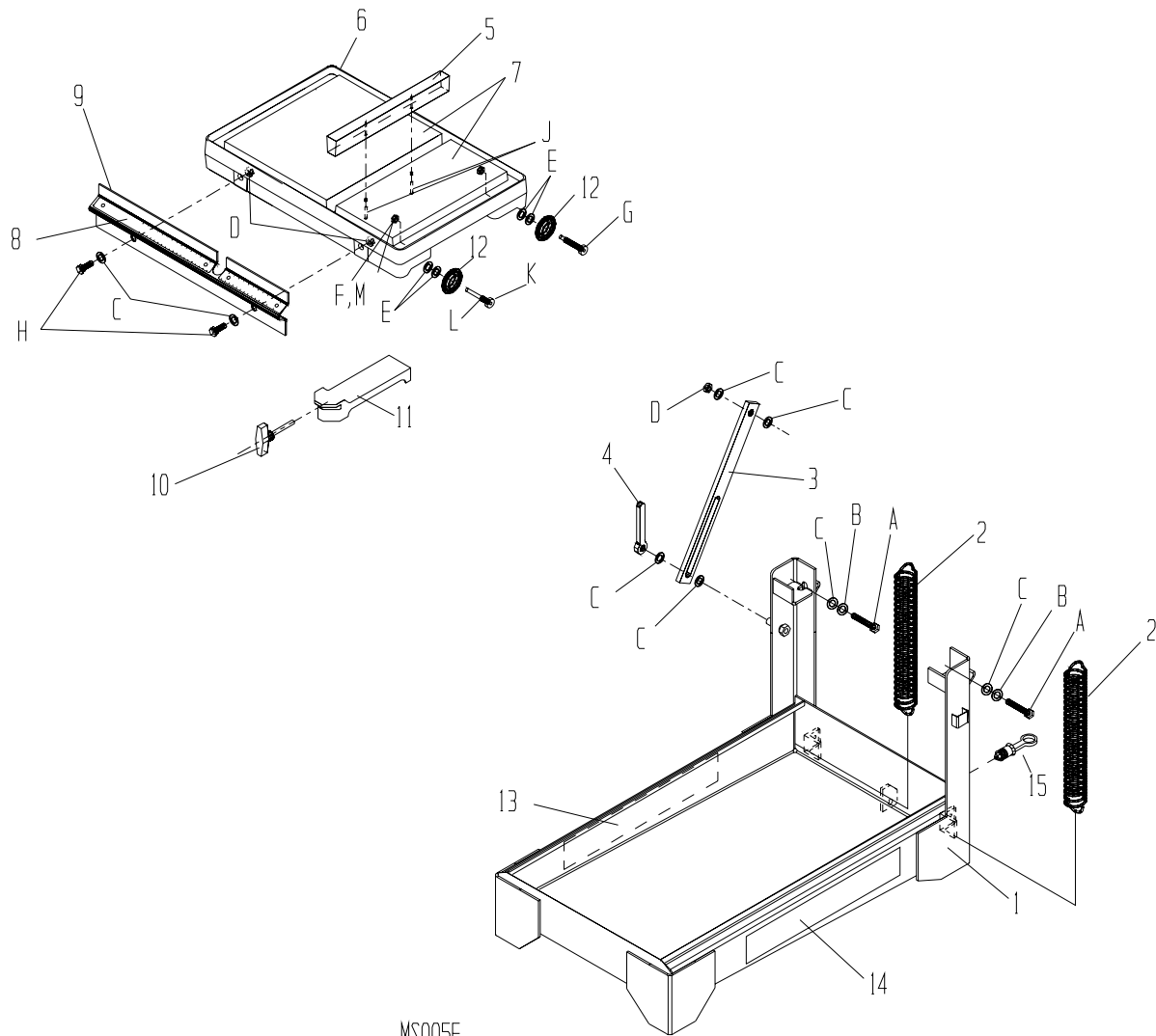
Table of Contents

Masonry Saw

EXPLODED VIEWS AND PARTS LISTS	23-57
Portable - Lower Body Assembly	24-25
Portable Electric - Cutting Head Assembly	26-29
Portable Gas - Cutting Head Assembly	30-35
Portable - Foot Pedal Assembly	36-37
Portable - Leg Assembly	38-39
Professional - Lower Body Assembly	40-43
Professional Gas - Cutting Head Assembly	44-49
Professional Electric - Cutting Head Assembly	50-53
Portable/Professional Gas - Water Pump Assembly	54-55
Decal Identification - Portable/Professional	56-57

Parts List

Portable - Lower Body Assembly



MS005F

Parts List

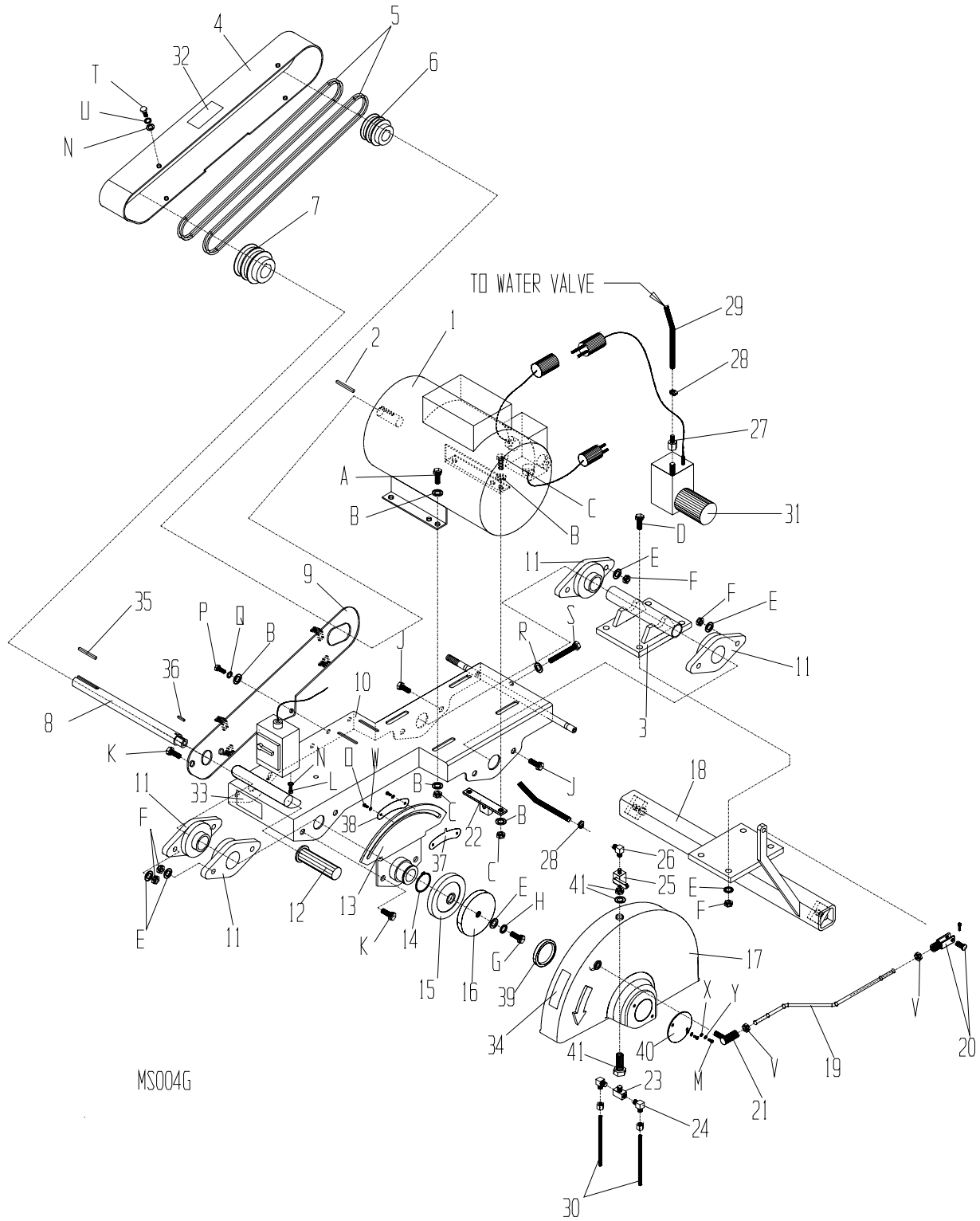
Portable - Lower Body Assembly

Item	Part No.	Description	Qty.	Torque (NM) (LB.FT.)
1	43861-2	Weld Base Assy	1	
2	39257	Spring Extension - Gas	2	
2a	39257	Spring Extension - Electric	1	
3	43844	Link Tilt Locking - Electric	1	
3a	39491	Link Tilt Locking - Gas	1	
4	39258	Handle	1	
5	43939	Wood Block	1	
6	43753	Cutting Cart	1	
7	43921	Pad Rubber Cutting	1	
8	55340	Decal Scale Port Table	1	
9	43920	Rail Mitre	1	
10	31019	Thumb Knob 1/4-20	1	
11	43752	Protractor	1	
12	43873	Wheel Cutting Table	4	
13	55347	Decal Tail Left	1	
14	55346	Decal Tail Right	1	
15	32249	Plug Drain	1	
#	41034	Wrench 19mm	1	
#^	23463	Water Curtain w/Hooks	-	
#	23090	Kit Cutting Cart with Wheels	1	
A	80831	HHCS M12 - 1.75 X 70 8.8 ZN	2 72	54
B	80826	WSHRL M12 Hicollar ZN	2 -	-
C	80807	WSHR M12 Flat 24 OD ZN	8 -	-
D	80830	NUTNY M12 - 1.75 ZN	3 -	-
E	80904	Hinge Ring 10mm x 14mm	8 -	-
F	80817	NUTNY M8 - 1.25 ZN	4 -	-
G	80905	SHSHB DIA M10 Thd M8 X 12mm LG	3 21	16
H	80843	HHCS M12 - 1.75 X 30 8.8 ZN	2 72	54
J	80914	PHSMS M5.5 x 32 ZN	2 -	-
K	80977	SHSHB DIA M8 Thd M6 x 35mm LG	1	
L	44609	Bushing Eccentric	1	
M	44610	Washer Wedge	1	

Remarks: ^ Not Shown

Parts List

Portable Electric - Cutting Head Assembly



MS004G

Parts List

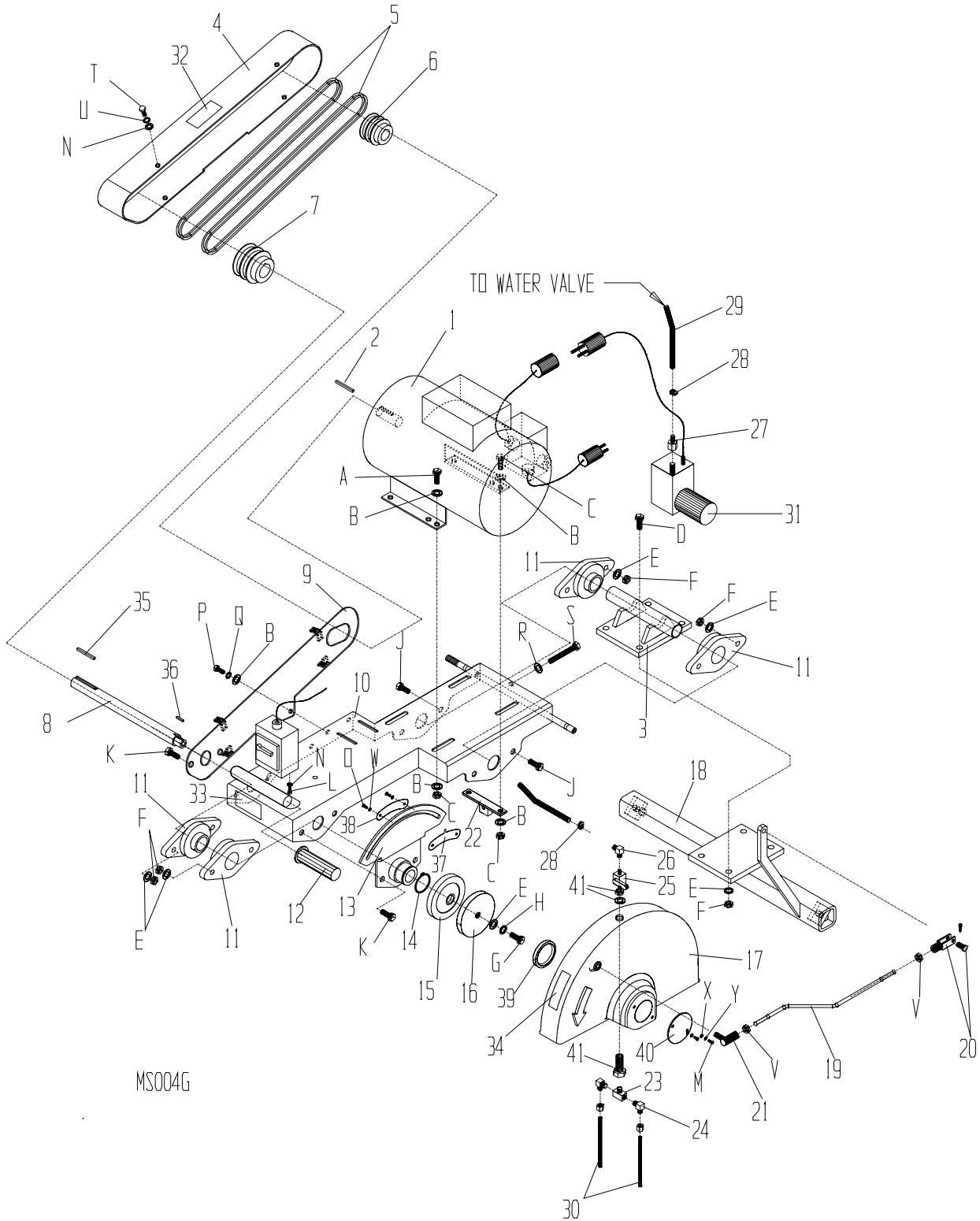
Portable Electric - Cutting Head Assembly

Item	Part No.	Description	Qty.
1	23322	Motor Electric 1-1/2HP 115V	1
1a	23323	Motor Electric 1-1/2HP 230V	1
1b	23324	Motor Electric 2HP 115V	1
1c	23325	Motor Electric 2HP 230V	1
2	37716	Key Sq 3/16 x 1.75	1
3	43937-2	Weld Pivot Support	1
4	43877	Guard Belt	1
5	39510	V-Belt AX35	2
6	32311	Sheave 2AK23 x 5/8	1
7	39347	Sheave 2AK28 x 1	1
8	43827	Shaft Blade	1
9	43884-2	Weld Belt Guard	1
10	43828-2	Weld Tilt Arm	1
11	32294	Flange Bearing 1"	4
12	47125	Grip Handle 1"	1
13	43894-2	Weld Guide Plate	1
14	80906	Ring Retaining	1
15	43787	Clamp Blade Left	1
16	43788	Clamp Blade Right	1
17	23074	Kit Guard Blade 14"	1
18	43862-2	Weld Support	1
19	43856	Rod Stay Level	1
20	39255	Yoke End 3/8 - 24	1
21	39254	Rod End 3/8 - 24 Quick Release	1
22	43882-2	Weld Elec Belt Tens	1
23#+	39148	Tee Branch 1/8 NPT Male	1
24#+	39149	Fitting 1/8 90 Comp	2
25#	32472	Valve Hyd Ball	1
26#	39249	Barb 3/8 90 to 1/8 NPT	1
27#	39250	Barb 3/8 Fem to 1/4 NPT	1
28	48356	Hose Clamp 5/8 OD	2
29	39150	Hose 3/8 Nylon Braid	3.75 ft.
30+	39170	Tubing 1/4 x 5.5 LG 14" Guard	2
31	39251	Pump Electric 115V	1
31a	23341	Kit Pump and Plug Electric 230V	1

Remarks: ^ Not Shown
 * Option
 # Parts included in 23046 Plumbing Kit
 + Parts included in 23074 Kit Guard Blade

Parts List

Portable Electric - Cutting Head Assembly



Parts List

Portable Electric - Cutting Head Assembly

Item	Part No.	Description	Qty.	Torque (NM) (LB.FT.)
32	55289	Decal Caution Moving Part	1	
33	55285	Decal Caution Saw Icon	1	
34	55287	Decal Caution Lift Guard	1	
35	80061	Key Sq 1/4 x 1.50 LG	1	
36	43869	Key Sq 1/8 x .75 LG	1	
37+	44352	Spacer Blade Guard	1	
38+	44396	Spacer Blade Guard	1	
39+	37283	Bushing Guard Blade	1	
40+	37473	Cover Guard Blade	1	
41#+	32471	Fitting Water BHUS 5/8 Unf 1/8 Npt	1	
42^	23046	Kit Plumbing Portable	1	
A	80931	HHCS M8 - 1.25 X 30 8.8 ZN	4	21 16
B	80857	WSHR M8 Flat 16 OD ZN	10	- -
C	80817	NUTNY M8 - 1.25 ZN	4	- -
D	80844	HHCS M12 - 1.75 x 50 8.8 ZN	4	72 54
E	80807	WSHR M12 Flat 24 OD ZN	12	- -
F	80830	NUTNY M12 - 1.75 ZN	12	- -
G	80843	HHCS M12 - 1.75 x 30 8.8 ZN	1	72 54
H	80805	WSHRL M12 Split ZN	1	- -
J	80913	HHCS M12 - 1.75 x 40 8.8 ZN	4	72 54
K	80844	HHCS M12 - 1.75 x 50 8.8 ZN	4	72 54
L	80889	HHCS M5 - .8 x 16 8.8 ZN	2	8 6
M+	81033	BHSCS M5 - .8 x 16 8.8 SS	2	8 6
N	80856	WSHR M6 Flat 12 OD ZN	6	- -
O	81020	SHSHB DIA M6 Thd M5 x 10mm LG	2	18 12
P	80406	HHCS M8 - 1.25 x 20 8.8 ZN	1	21 16
Q	80812	WSHRL M8 Split ZN	1	- -
R	80495	WSHR 5/16 SAE ZN	1	- -
S	80743	HHCS 5/16 - 18 x 4-1/2 ZN	1	21 16
T	80758	HHCS M6 - 1 x 20 8.8 ZN	4	18 12
U	80860	WSHRL M6 Split ZN	4	- -
V	80242	NUTFX 3/8 - 24 ZN	2	- -
W+	81175	WSHBL 1/4in x 9/16in SS	4	- -
X+	80855	WSHR M5 Flat 10 OD ZN	2	- -
Y+	80859	WSHRL M5 Split ZN	2	- -

Remarks: ^ Not Shown

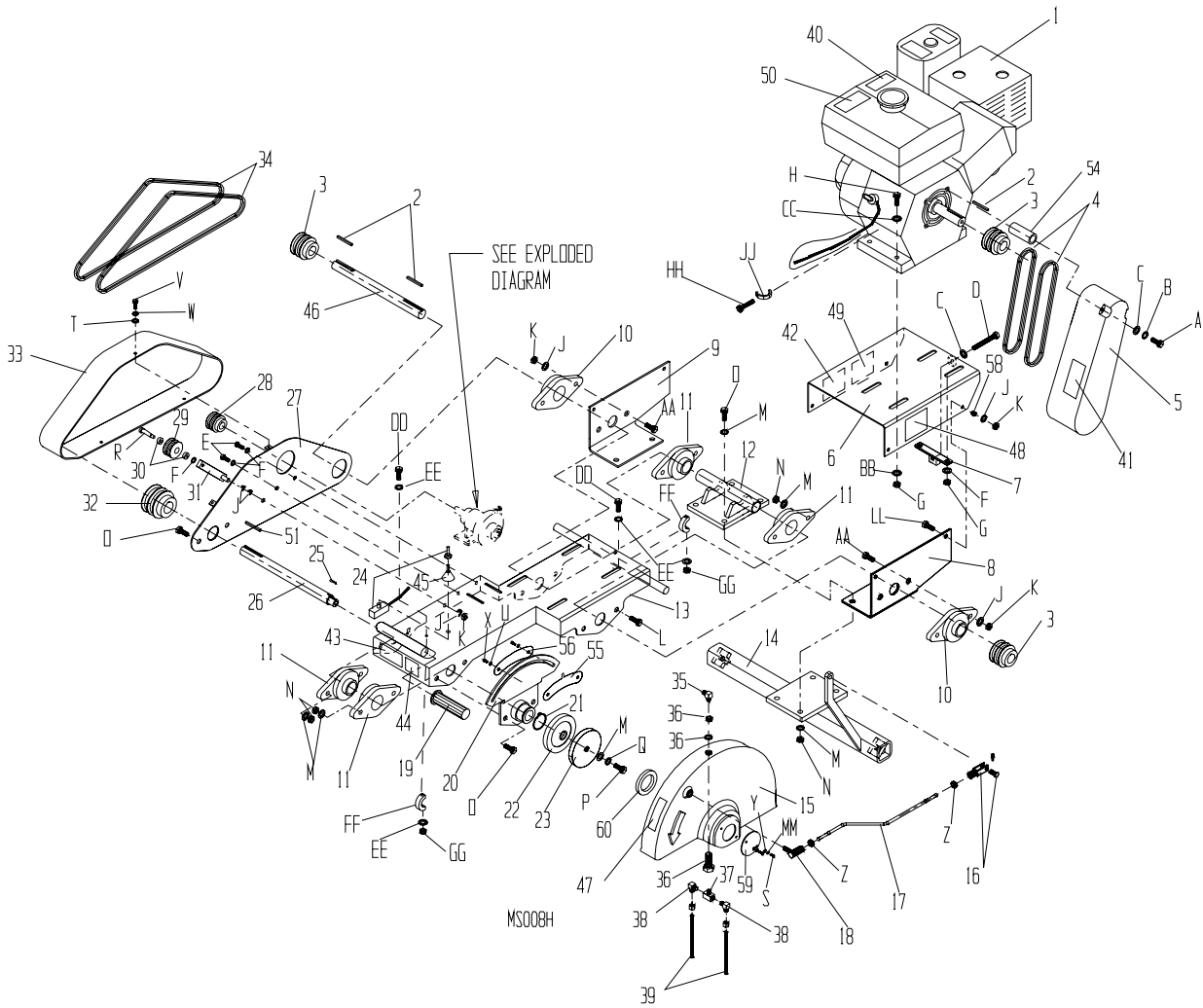
* Option

Parts included in 23046 Plumbing Kit

+ Parts included in 23074 Kit Guard Blade

Parts List

Portable Gas - Cutting Head Assembly



Parts List

Portable Gas - Cutting Head Assembly

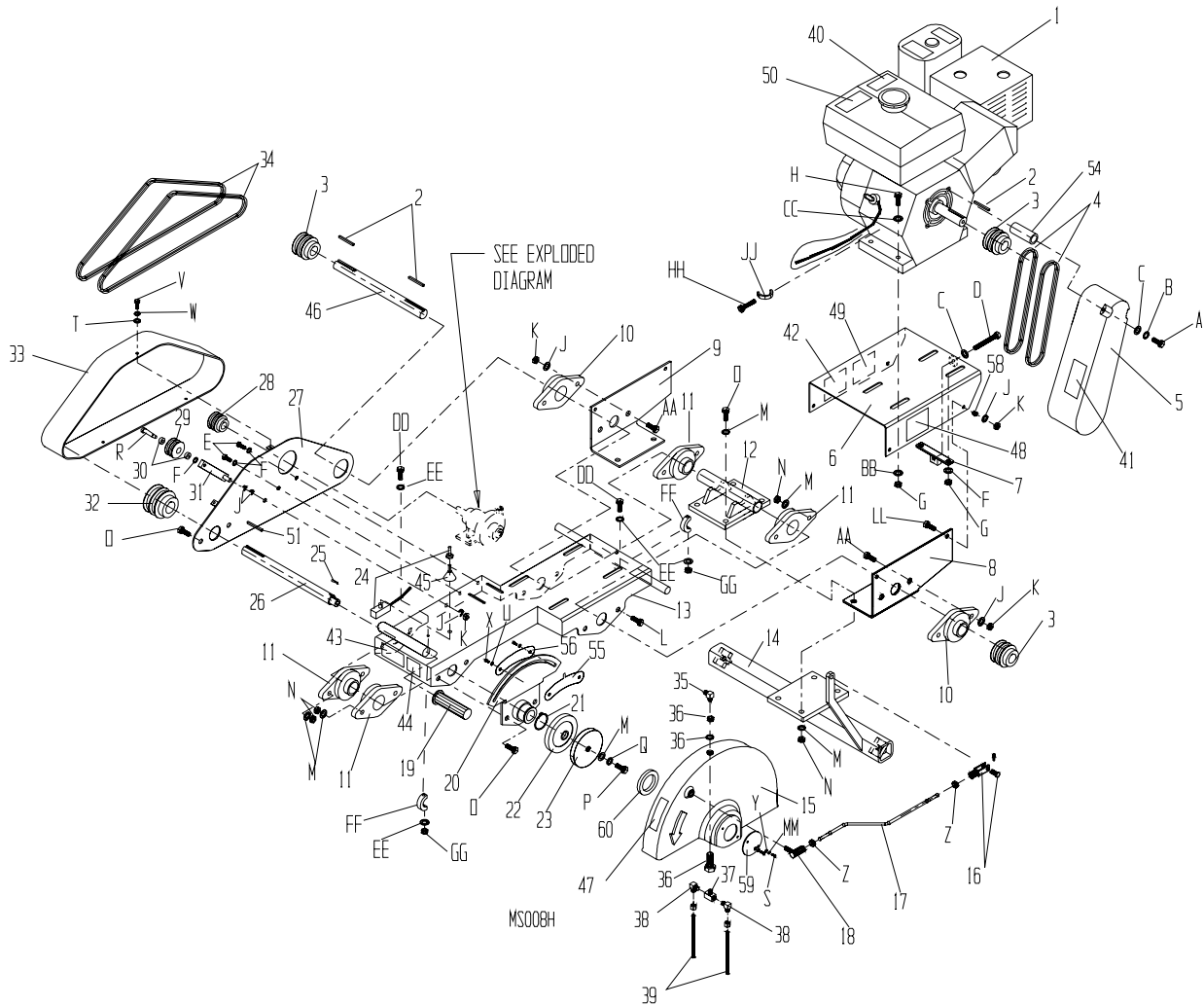
Item	Part No.	Description	Qty.
1	39261	Engine 5.5HP Honda Cyclone	1
1a	30603	Engine 6HP Robin Cyclone	1
2	37716	Key Sq 3/16 x 1.75	3
3	34538	Sheave 2AK23 X 3/4	3
4	39492	V-Belt 25" 4L270	2
5	43876	Guard Belt Engine	1
6	45702	Weld Engine Deck Honda	1
7	43901-2	Weld Tensioner Honda	1
8	43928-2	Brkt Tilt Arm Pivot Right	1
9	43817-2	Brkt Tilt Arm Pivot Left	1
10	32295	Flange Bearing 3/4"	2
11	32294	Flange Bearing 1"	4
12	43937-2	Weld Pivot Support	1
13	43828-2	Weld Tilt Arm	1
14	43862-2	Weld Support	1
15	23074	Kit Guard Blade 14"	1
16	39255	Yoke End 3/8 - 24	1
17	43856	Rod Stay Level	1
18	39254	Rod End 3/8 - 24 Quick Release	1
19	47125	Grip Handle 1"	1
20	43894-2	Weld Guide Plate	1
21	80906	Ring Retaining	1
22	43787	Clamp Blade Left	1
23	43788	Clamp Blade Right	1
24	36301	Toggle Switch On/Off	1
25	43869	Key Sq 1/8 x .75 Lg	1
26	43827	Shaft Blade 1"	1
27	45013-2	Weld Mount Guard (MS1)	1
28	34051	Sheave 2AK44 x 1	1
29	39259	Pulley Tensioner 2AK	1
30	39260	Bearing 1900 ABEC1 10 x 20mm	2
31	37469-2	Weld Belt Tensioner	1
32	39347	Sheave 2AK 28-1	1
33	45017	Guard Jackshaft (MS1 Gas)	1
34	35280	V-Belt A39	2

Remarks: ^ Not Shown

Included in 23045 Plumbing Kit

Parts List

Portable Gas - Cutting Head Assembly



Parts List

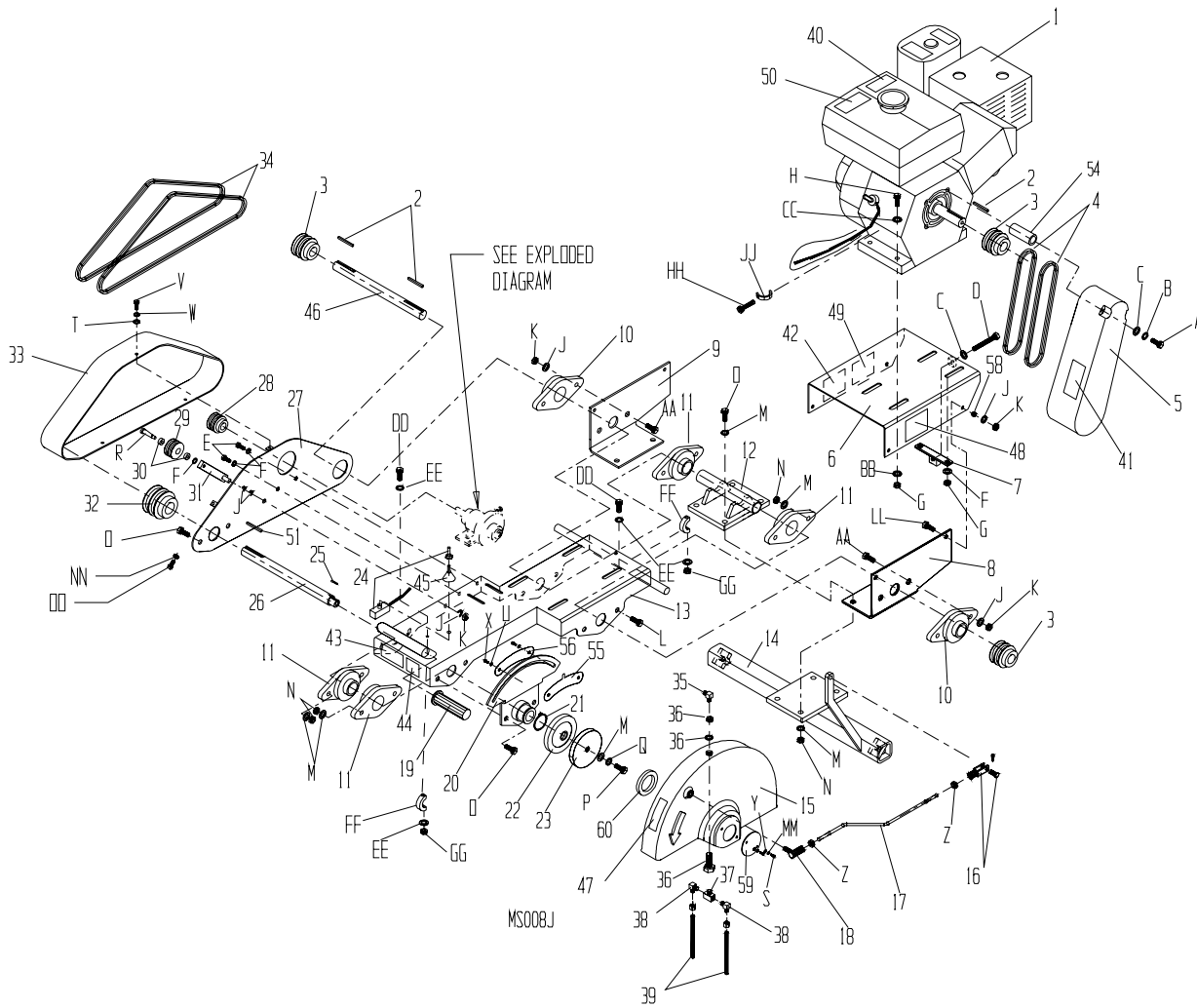
Portable Gas - Cutting Head Assembly

Item	Part No.	Description	Qty.	Torque (NM) (LB.FT.)
35#	39249	Fitting 1/8 90	1	
36#+	32471	Fitting Water BHUS Unf 1/8 Npt	1	
37#+	39148	Tee Branch 1/8 NPT Male	1	
38#+	39149	Fitting 1/8 90 Comp	2	
39+	39170	Tubing 1/4 x 5.5 LG 14" Guard	2	
40	55156	Decal Notice	1	
41	55289	Decal Caution Moving Part	1	
42	55269	Decal Fuel Shut-Off	1	
43	55285	Decal Caution Saw Icon	1	
44	55291	Decal Caution Spark Plug	1	
45	35838	Rubber Boot	1	
46	43854	Shaft Drive	1	
47	55287	Decal Caution Lift Guard	1	
48	55288	Decal Danger Carbon Monoxide	1	
49	55290	Decal Caution No Smoke	1	
50	55214	Decal Sta-Bil	1	
51	80061	Key Sq 1/4 x 1.50	1	
52^	23045	Kit Plumbing	1	
53^	23090	Kit Cutting Table Port	1	
54	39503	Stand-Off	2	
55	44352	Spacer Blade Guard	1	
56	44396	Spacer Blade Guard	1	
57^	43326	Wire Harness Kill Switch	1	
58	47355	Shock Mount	4	
59+	37473	Cover Guard Blade	1	
60+	37283	Bushing Guard Blade	1	

Remarks: ^ Not Shown
Included in 23045 Plumbing Kit
+ Parts included in 23074 Kit Guard Blade

Parts List

Portable Gas - Cutting Head Assembly



Parts List

Portable Gas - Cutting Head Assembly

Item	Part No.	Description	Qty.	Torque	
				(NM)	(LB.FT.)
A	80935	HHCS 5/16 - 24 x 3-1/4 GR5 ZN	2	16	12
B	80086	WSHRL 5/16 Med Split ZN	2	-	-
C	80348	WSHR 5/16 WROT ZN	2	-	-
D	80944	HHCS M8-1.25 x 60 8.8 ZN	1	As Needed	
E	80406	HHCS M8 - 1.25 x 20 8.8 ZN	1	21	16
F	80857	WSHR M8 Flat 16 OD ZN	8	-	-
G	80817	NUTNY M8 - 1.25 ZN	6	-	-
H	80883	HHCS M8- 1.25 x 50 8.8 ZN	4	21	16
J	80806	WSHR M10 Flat 20 OD ZN	18	-	-
K	80833	NUTNY M10 - 1.5 ZN	10	-	-
L	80913	HHCS M12 - 1.75 x 40 8.8 ZN	4	72	54
M	80807	WSHR M12 Flat 24 OD ZN	13	-	-
N	80830	NUTNY M12 - 1.75 ZN	8	-	-
O	80844	HHCS M12 - 1.75 x 50 8.8 ZN	8	72	54
P	80843	HHCS M12 - 1.75 x 30 8.8 ZN	1	72	54
Q	80805	WSHRL M12 Split ZN	1	-	-
R	80903	SHSHB Dia M10 Thd M8 x 40mm LG	1	8.6	6.5
S+	81033	BHSCS M5 - .8 x 16 8.8 SS	2	18	12
T	80571	WSHR 1/4 SAE ZN	3	-	-
U+	81175	WSHBL 1/4 x 9/16in SS	4	-	-
V	80836	HHCS M6-1 x 16 8.8 ZN	3	-	-
W+	80860	WSHRL M6 Split ZN	3	-	-
X+	81020	SHSHB Dia M6 Thd M5 x 10mm LG	2	-	-
Y	80855	WSHR M5 Flat 10 OD ZN	4	-	-
Z	80242	NUTFX 3/8 - 24 ZN	2	-	-
AA	80815	HHCS M10-1.5 X 30 8.8 ZN	8	-	-
BB	80813	WSHR M8 Flat 24 OD ZN	2	-	-
CC	80812	WSHRL M8 Split ZN	2	-	-
DD	80434	HHCS 1/4-20 x 3/4 Gr5 ZN	2	-	-
EE	80571	WSHR 1/4 SAE ZN	4	-	-
FF	35448	Clamp 5/8 Rubber Loop	2	-	-
GG	80236	1/4-20 NUTKP	2	-	-
HH	80766	HWH Crimptite #8 x 3/8	1	-	-
JJ	39509	Clamp 3/8 Loop	1	-	-
KK	39508	Wire Cover Polyloom	30"	-	-
LL	61846	HHCS M10 x 35 8.8 ZN	4	-	-
MM+	80859	WSHRL M5 Split ZN	2	-	-
NN	80814	NUTFX M8 ZN	1	-	-
OO	80762	HHCS M8 x 40 ZN	1	21	16

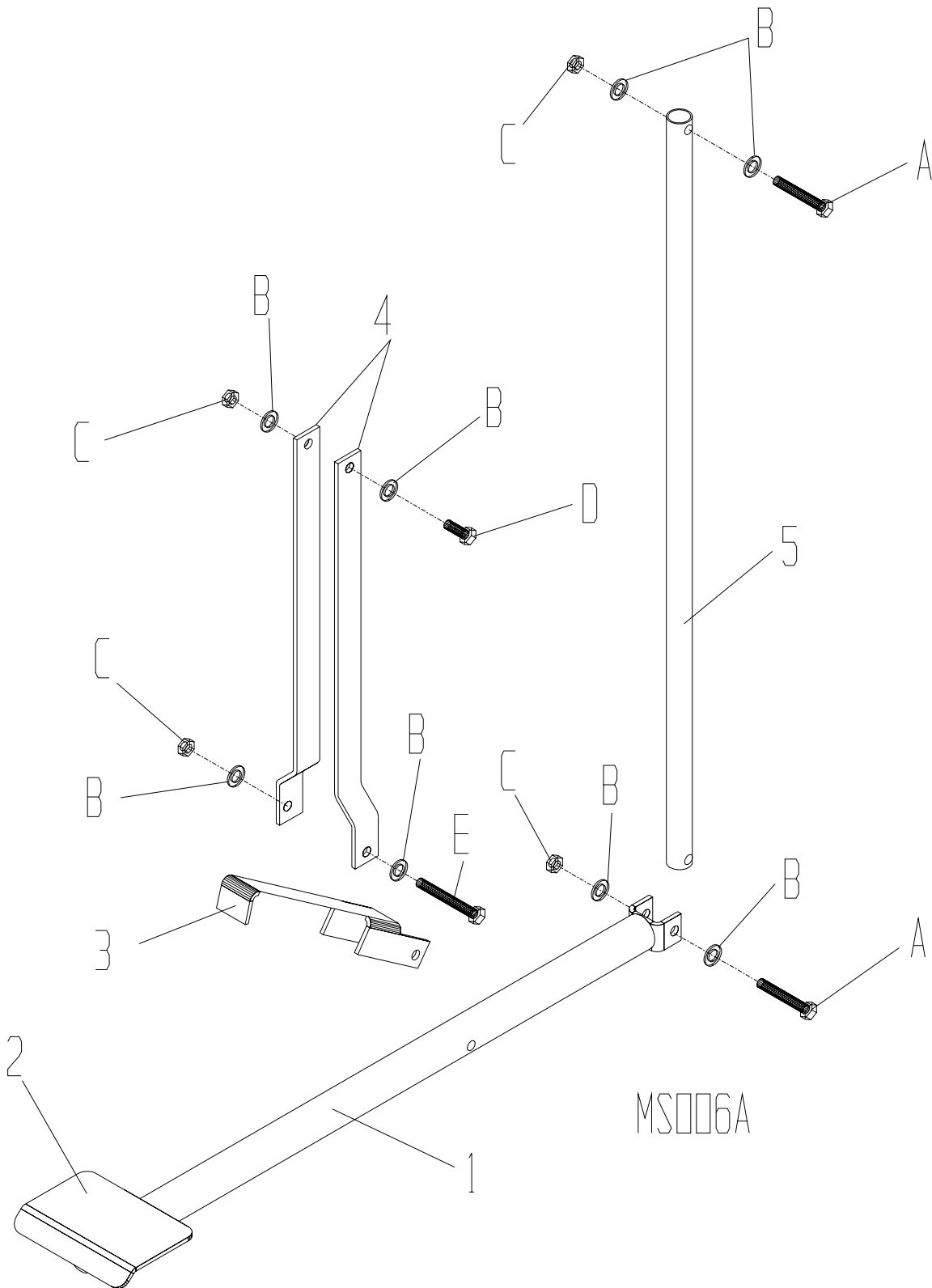
Remarks: ^ Not Shown

Included in 23045 Plumbing Kit

+ Parts Included in 23074 Kit Guard Blade

Parts List

Portable - Foot Pedal Assembly



Parts List

Portable - Foot Pedal Assembly

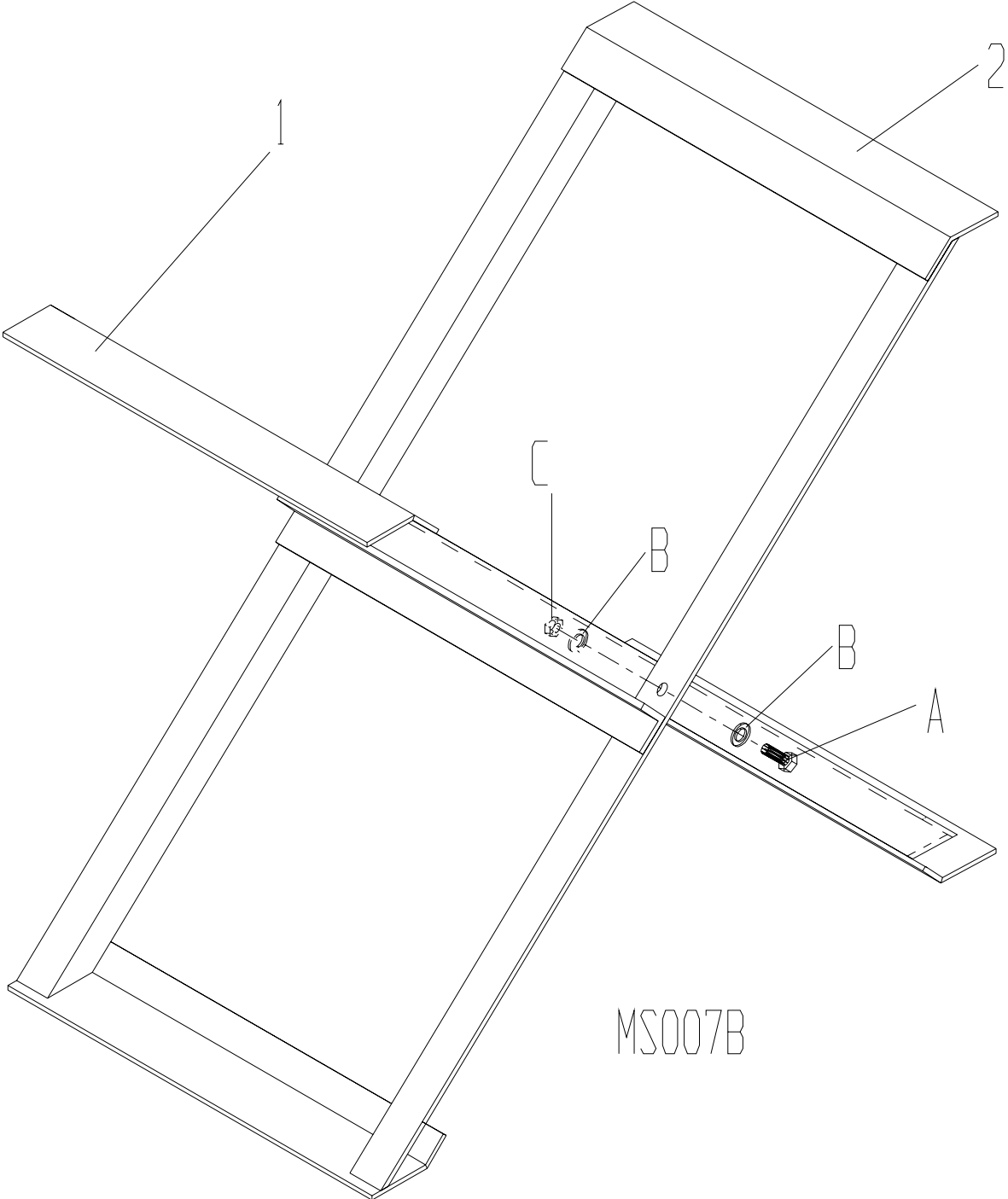
Item	Part No.	Description	Qty.
1	39305-2	Weld Foot Pedal	1
2	39311	Skid Tread 5-1/2 x 4	1
3	43860	Support Foot Pedal	1
4	43865	Support Foot Pedal	2
5	43857	Link Tilt Arm	1
^	23055	Kit Foot Pedal Portable	1
A	80839	HHCS M10-1.5 x 70 8.8 ZN	2
B	80806	WSHR M10 Flat 20 OD ZN	8
C	80833	NUTNY M10 - 1.5 ZN	4
D	80837	HHCS M10-1.5 x 40 8.8 ZN	1
E	80840	HHCS M10 - 1.5 x 80 8.8 ZN	1

Remarks: ^ Not Shown

Torque screws to allow for free movement of parts

Parts List

Portable - Leg Assembly



MS007B

Parts List

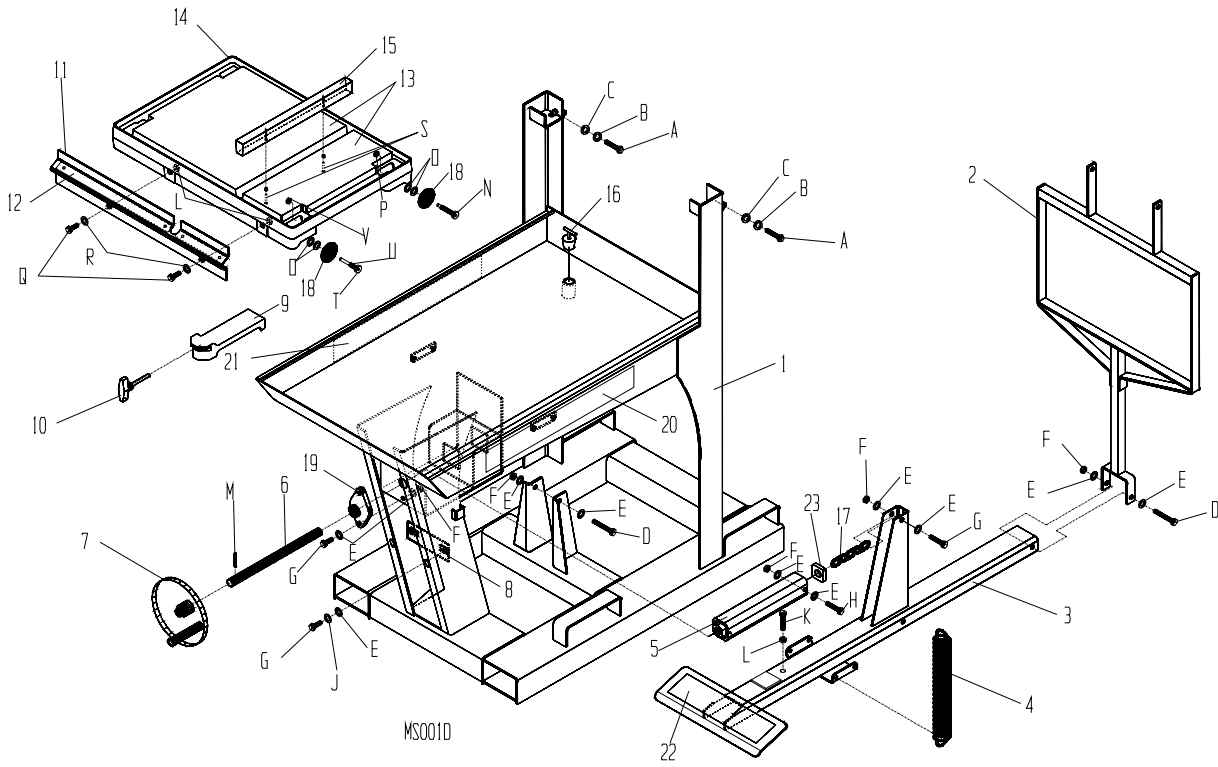
Portable - Leg Assembly

Item	Part No.	Description	Qty.
1	43853-2	Weld Leg Assy Front	1
2	43820-2	Weld Leg Assy Rear	1
3^	23054	Kit Leg Set	1
A	80843	HHCS M12 - 1.75 x 30 8.8 ZN	2
B	80807	WSHR M12 Flat 24 OD ZN	4
C	80830	NUTNY M12 - 1.75 ZN	2

Remarks: Torque bolts to allow for free movement of parts.
^ Not Shown

Parts List

Professional - Lower Body Assembly



Parts List

Professional - Lower Body Assembly

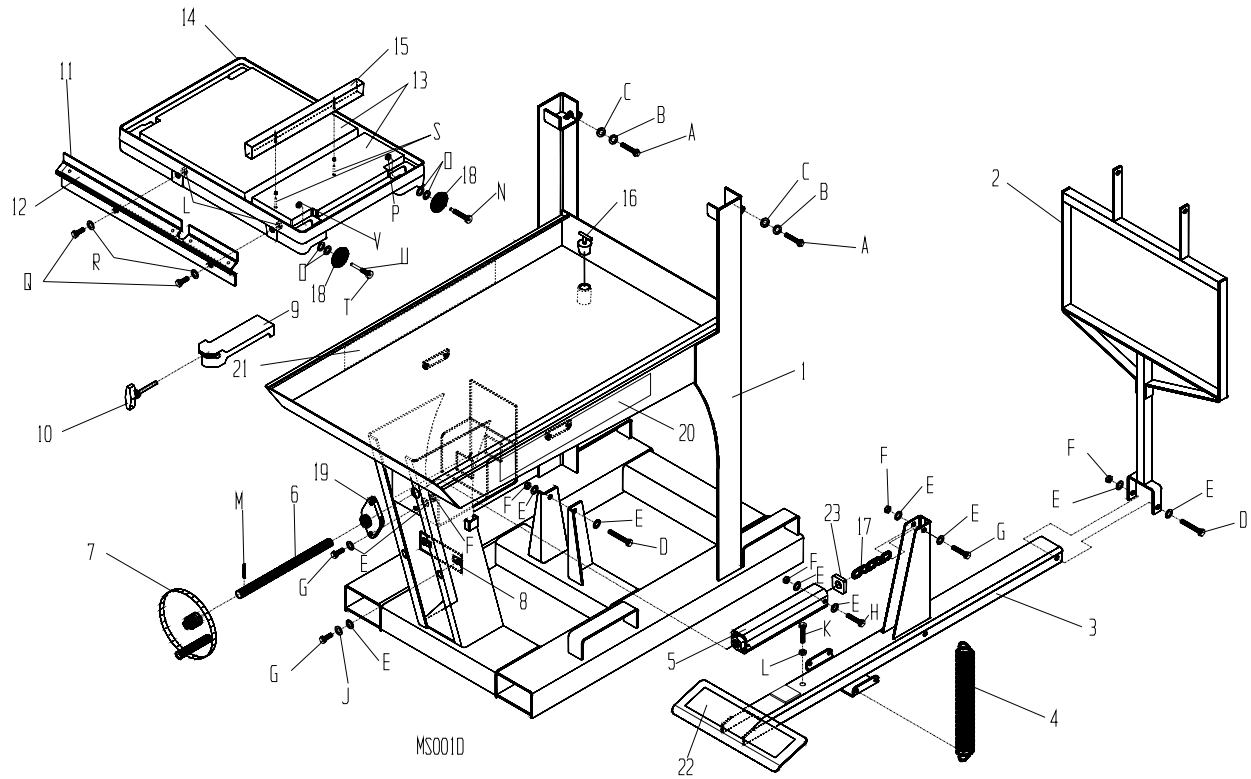
Item	Part No.	Description	Qty.	Torque (NM) (LB.FT.)	
1	43794-2	Water Tray Weldment Assy	1		
2	43897-2	Tilt Arm Linkage Weldment Assy	1		
3	43896-2	Foot Pedal Weld Assy	1		
4	39257	Extension Spring	4		
5	43898-2	Acme Nut Weld Assy	1		
6	43791	Lifting Screw Acme	1		
7	43938	Crank Handle Mach	1		
8	43990-2	Stop Foot Pedal	1		
9	43752	Protractor	1		
10	81019	Thumb Screw 1/4-20	1		
11	43919	Rail Mitre	1		
12	55341	Scale	1		
13	43922	Pad Rubber Cutting	1		
14	43751	Cart Cutting	1		
15	43940	Block Wooden	1		
16	32249	Plug Drain	1		
17	43801	Chain Foot Pedal (4 Links)	1		
18	43873	Wheel Cutting Table	4		
19	32295	Flange Bearing 3/4	1		
20	55346	Decal Tail Right	1		
21	55347	Decal Tail Left	1		
22	39310	Skid Tread	1		
23	39338	Nut Urethane	1		
^*	23464	Water Curtain w/Hooks	-		
A	80831	HHCS M12 - 1.75 x 70 8.8 ZN	2	72	54
B	80826	WSHRL M12 Hicollar ZN	2		
C	80807	WSHR M12 Flat 24 OD ZN	4		
D	80842	HHCS M10 - 1.5 x 100 8.8 ZN	2	42	32
E	80806	WSHR M10 Flat 20 OD ZN	9		
F	80833	NUTNY M10 - 1.5 ZN	5		
G	80838	HHCS M10 - 1.5 x 50 8.8 ZN	3	42	32
H	80840	HHCS M10 - 1.5 x 80 8.8 ZN	1	42	32
J	80804	WSHRL M10 Split ZN	2		

Remarks: ^ Not Shown

^* Not Shown--Option

Parts List

Professional - Lower Body Assembly



Parts List

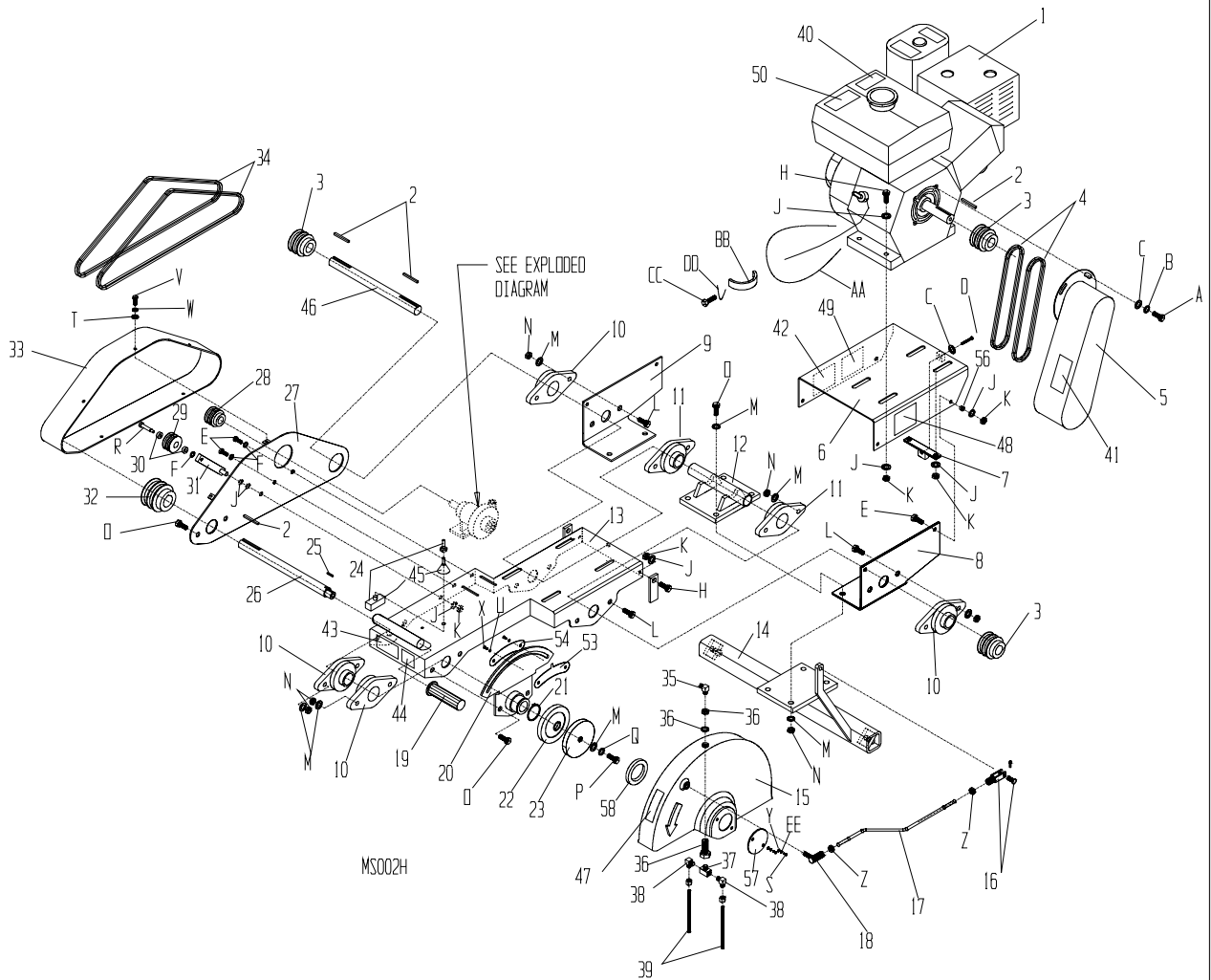
Professional - Lower Body Assembly

Item	Part No.	Description	Qty.	Torque (NM) (LB.FT.)
K	80927	HHCS M12 - 1.75 x 120 8.8 ZN	1	72 54
L	80830	NUTNY M12 - 1.75 ZN	2	
M	80309	PINSP 5/16 x 1-1/2 ZN	1	
N	80905	SHSHB DIA M10 THD M8 X 12mm LG	3	21 16
O	80904	Hinge Ring 10mm x 14mm	8	
P	80817	NUTNY M8 - 1.25 ZN	3	
Q	80843	HHCS M12 - 1.75 x 30 8.8 ZN	2	72 54
R	80807	WSHR M12 Flat 24 OD ZN	2	
S	80914	PHSMS M5.5 x 32 ZN	2	
T	80977	SHSHB DIA M8 Thd M6 x 35mm LG	1	
U	44609	Bushing Eccentric	1	
V	44610	Washer Wedge	1	
^	41034	Wrench 19mm	1	
^	23089	Kit Cutting Table	1	

Remarks: ^ Not Shown
 ^* Not Shown--Option

Parts List

Professional - Gas Cutting Head Assembly



Parts List

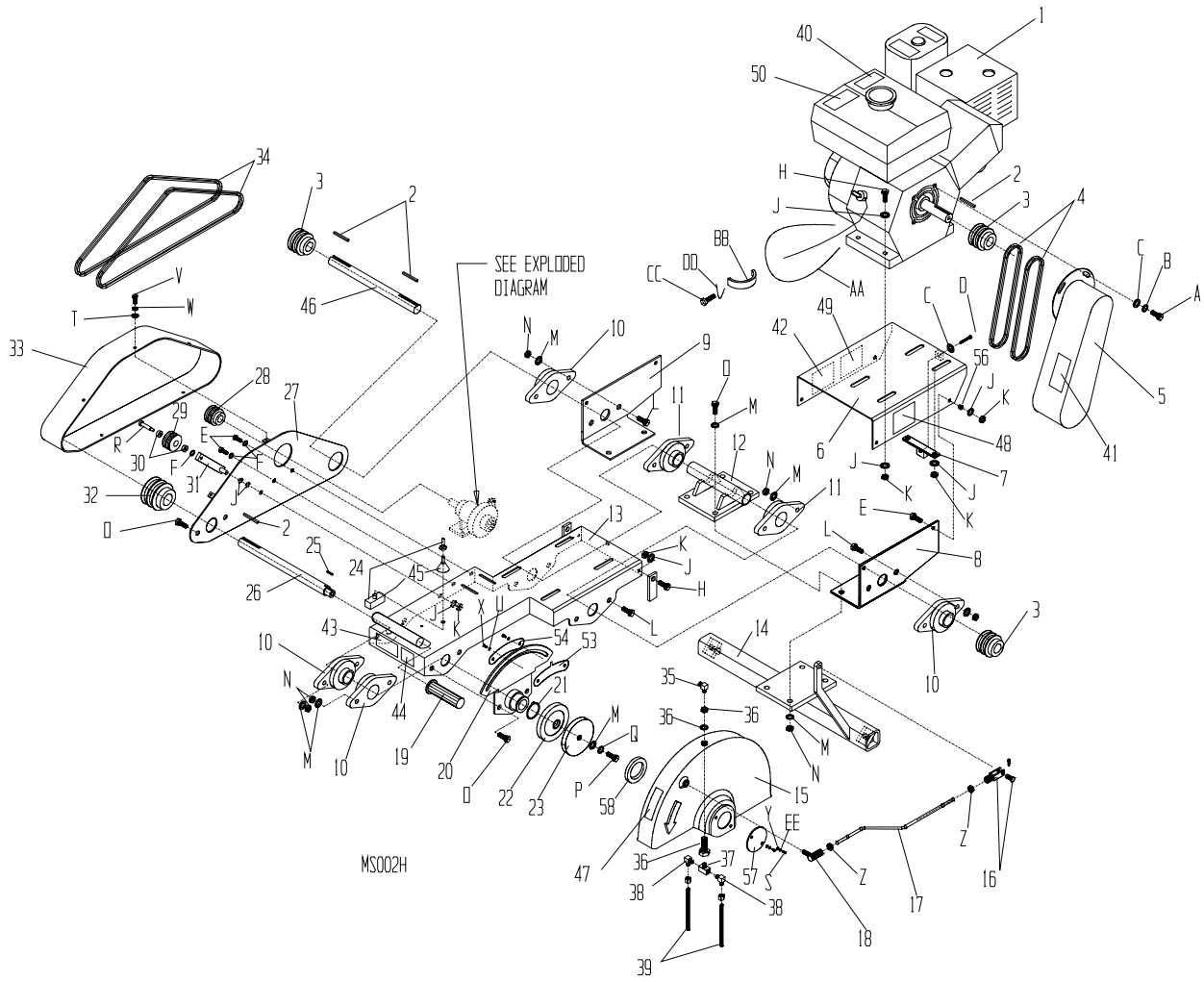
Professional - Gas Cutting Head Assembly

Item	Part No.	Description	Qty.
1	30555	Engine 8HP Honda Cyclone	1
1a	30559	Engine 11HP Honda Cyclone	1
1b	30602	Engine Robin 9HP Cyclone	1
2	80061	Key Sq 1/4 x 1.50 PLN	1
3	34503	Sheave 2AK23 x 1	3
4	30400	V-Belt AX-28	2
5	43916	Guard Belt Engine	1
6	45703	Weld Engine Deck Honda 8HP, Robin 9HP	1
6a	45705	Weld Engine Deck Honda 11HP	1
7	43886-2	Weld Tensioner Honda 8HP, Robin 9HP	1
7a	39366-2	Weld Tensioner Honda 11HP	1
8	43803-2	Brkt Tilt Arm Pivot Right	1
9	43779-2	Brkt Tilt Arm Pivot Left	1
10	32294	Flange Bearing 1"	4
11	32313	Flange Bearing 1-1/4"	2
12	43926-2	Weld Pivot Support	1
13	43813-2	Weld Tilt Arm	1
14	43892-2	Weld Support	1
15	23074	Kit Blade Guard 14"	1
15a	23075	Kit Blade Guard 20"	1
16	39255	Yoke End 3/8 - 24	1
17	43807	Rod Stay Level	1
18	39254	Rod end 3/8 - 24 Quick Release	1
19	47125	Grip Handle 1"	1
20	43894-2	Weld Guide Plate	1
21	80906	Ring Retaining	1
22	43787	Clamp Blade Left	1
23	43788	Clamp Blade Right	1
24	36301	Toggle Switch On/Off	1
25	43869	Key Sq 1/8 x .75 Lg	1
26	43789	Shaft Blade	1
27	45015-2	Weld Mount Guard (MS2)	1
28	34051	Sheave 2AK44 x 1	1
29	39259	Pulley Tensioner 2AK x 2.75	1

Remarks: ^ Not Shown
Included in 23045 Plumbing Kit
+ Included in 23074/23075 Kit Blade Guard

Parts List

Professional - Gas Cutting Head Assembly



Parts List

Professional - Gas Cutting Head Assembly

Item	Part No.	Description	Qty.
30	39260	Bearing 1900 ABEC1 10 x 20mm	2
31	37469-2	Weld Belt Tensioner	1
32	34050	Sheave 2AK 32-1	1
33	45012	Guard Jackshaft (MS2 Gas)	1
34	37471	V-Belt A46	2
35^	39249	Barb 3/8 90 Deg to 1/8 NPT Male	1
36#+	32471	Fitting Water BHUS 5/8 Unf 1/8 Npt	1
37#+	39148	Tee Branch 1/8 NPT Male	1
38#+	39149	Fitting 1/8 90 Comp	2
39+	39170	Tubing 1/4 x 5.5 LG 14" Guard	2
39a+	39152	Tubing 1/4 x 7.5 LG 20" Guard	2
40	55156	Decal Notice	1
41	55289	Decal Caution Moving Part	1
42	55269	Decal Fuel Shut-Off	1
43	55285	Decal Caution Saw Icon	1
44	55291	Decal Caution Spark Plug	1
45	35838	Rubber Boot	1
46	43786	Shaft Drive	1
47	55287	Decal Caution Lift Guard	1
48	55288	Decal Danger Carbon Monoxide	1
49	55290	Decal Caution No Smoke	1
50	55214	Decal Sta-Bil	1
51^	23045	Kit Plumbing Pro	1
52^#	39328	Check Valve	1
53+	44352	Spacer Blade Guard	1
54+	44396	Spacer Blade Guard	1
55^	43326	Wire Harness Kill Switch	1
56	47355	Shock Mount	4
57+	37473	Cover Guard Blade	1
58+	37283	Bushing Guard Blade	1

Remarks: ^ Not Shown
Included in 23045 Plumbing Kit
+ Included in 23074/23075 Kit Blade Guard

Parts List

Professional - Gas Cutting Head Assembly

Item	Part No.	Description	Qty.	Torque	
				(NM)	(LB.FT.)
A	80095	HHCS 5/16 - 24 x 3/4 GR5 ZN	3	16	12
B	80086	WSHRL 5/16 Med Split ZN	3		
C	80348	WSHR 5/16 WROT ZN	4		
D	80934	HHTB 5/16 - 18 x 3-1/2 GR5 ZN	1		
E	61846	HHCS M10 x 35 8.8 ZN	4	21	16
F	80857	WSHR M8 Flat 16 OD ZN	2		
G	80817	NUTNY M8 - 1.25 ZN	2		
H	80838	HHCS M10 - 1.5 x 50 8.8 ZN	6	42	32
J	80806	WSHR M10 Flat 20 OD ZN	16		
K	80833	NUTNY M10 - 1.5 ZN	10		
L	80913	HHCS M12 - 1.75 x 40 8.8 ZN	8	72	54
M	80807	WSHR M12 Flat 24 OD ZN	1		
N	80830	NUTNY M12 - 1.75 ZN	1		
O	80844	HHCS M12 - 1.75 x 50 8.8 ZN	8	72	54
P	80843	HHCS M12 - 1.75 x 30 8.8 ZN	1	72	54
Q	80805	WSHRL M12 Split ZN	1		
R	80903	SHSHB Dia M10 Thd M8 x 40mm LG	1	18	12
S+	81033	BHSCS M5 x .8 x 16 8.8 SS	2	8	6
T	80571	WSHR 1/4 SAE ZN	5		
U+	81175	WSHBL 1/4in x 9/16in SS	4		
V	80836	HHCS M6-1 x 16 8.8 ZN	5		
W+	80860	WSHRL M6 Split	5		
X+	81020	SHSHB DIA M6 Thd M5 x 8mm LG	2		
Y+	80855	WSHR M5 Flat 10 OD ZN	2		
Z	80242	NUTFX 3/8 - 24 ZN	2		
AA	39508	Poly Loom	30in		
BB	39509	Clamp 3/8 Loop Rbr Cushion	1		
CC	80865	HHCS M6-1x10 8.8 ZN	1		
DD	47198	Tyton Tie T40l	1		
EE+	80859	WSHRL M5 Split ZN	2		
FF	80814	NUTFX M8 ZN	1		
GG	80762	HHCS M8 x 40 ZN	1		

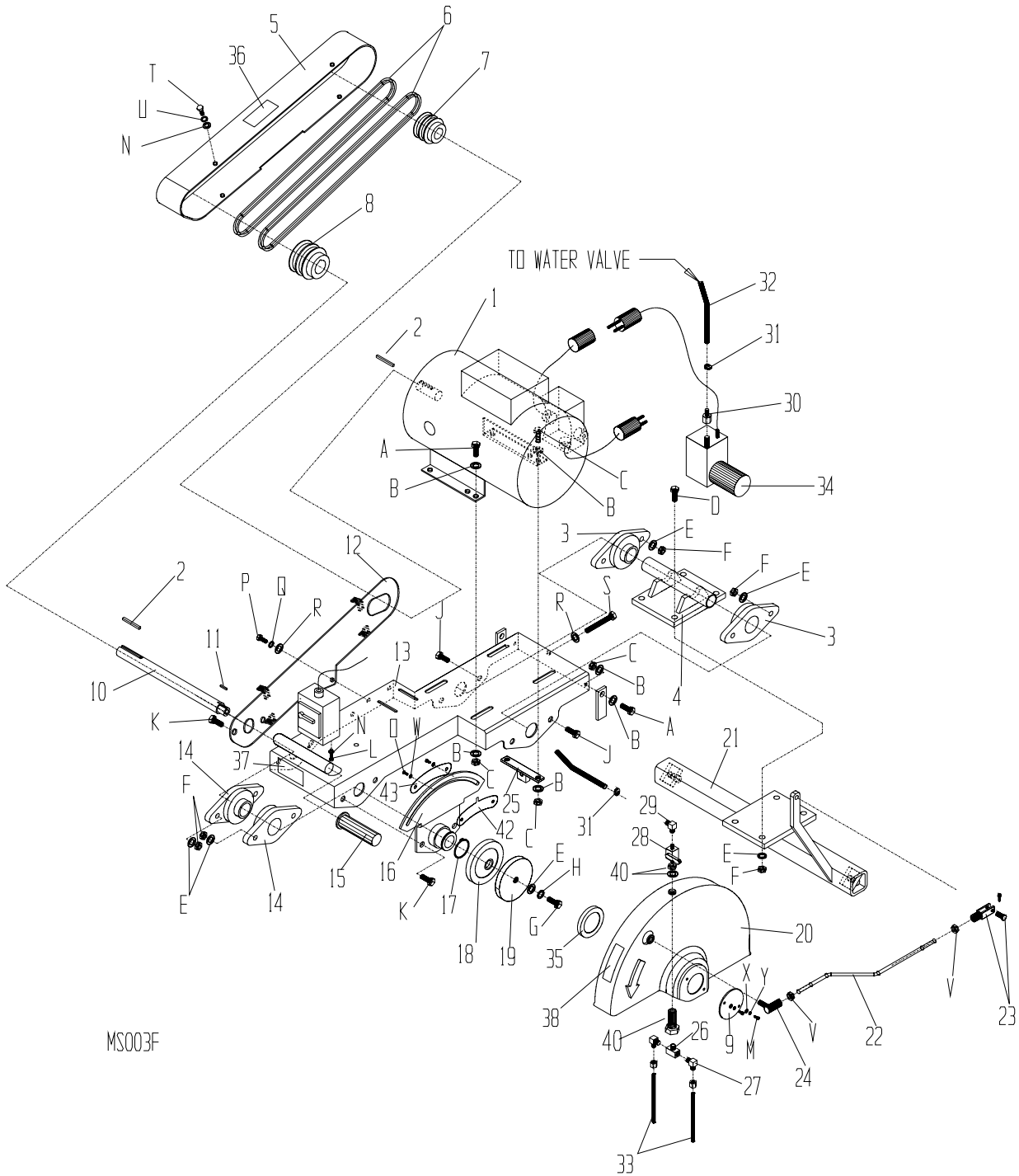
Remarks: ^ Not Shown

Included in 23045 Plumbing Kit

+ Included in 23074/23075 Kit Blade Guard

Parts List

Professional - Electric Cutting Head Assembly



MS003F

Parts List

Professional - Electric Cutting Head Assembly

Item	Part No.	Description	Qty.
1	23327	Motor Electric 3HP 230V	1
1a	31263	Motor Electric 5HP TEFC20Y	1
2	80061	Key Sq 1/4 x 1.75 PLN	2
3	32313	Flange Bearing 1-1/4	2
4	43926-2	Weld Pivot Support	1
5	43906	Guard Belt	1
6	35277	V-Belt A-45	2
7	34503	Sheave 2AK23 x 1	1
8	34050	Sheave 2AK32 x 1	1
9+	37473	Cover Guard Blade	1
10	43789	Shaft Blade	1
11	43869	Key Sq 1/8 x .75 LG	1
12	43907-2	Weld Belt Guard	1
13	43813-2	Weld Tilt Arm	1
14	32294	Flange Bearing 1"	2
15	47125	Grip Handle 1"	1
16	43894-2	Weld Guide Plate	1
17	80906	Ring Retaining	1
18	43787	Clamp Blade Left	1
19	43788	Clamp Blade Right	1
20	23074	Kit Blade Guard 14"	1
20a	23075	Kit Blade Guard 20"	1
21	43892-2	Weld Support	1
22	43807	Rod Stay Level	1
23	39255	Yoke End 3/8 - 24	1
24	39254	Rod End 3/8 - 24 Quick Release	1
25	43903-2	Weld Elec Belt Tens	1
26#+	39148	Tee Branch 1/8 NPT Male	1
27#+	39149	Fitting 1/8 90 Comp	2
28#	32472	Valve Hyd Ball	1
29#	39249	Barb 3/8 90 Deg to 1/8 NPT Male	1
30#	39250	Barb 3/8 Fem to 1/4 NPT	1
31	48356	Hose Clamp 5/8 OD	2
32	39150	Hose 3/8 Nylon Braid	4.17 ft
33	39170	Tubing 1/4 x 5.5 LG 14" Guard	2
33a	39152	Tubing 1/4 x 7.5 LG 20" Guard	2

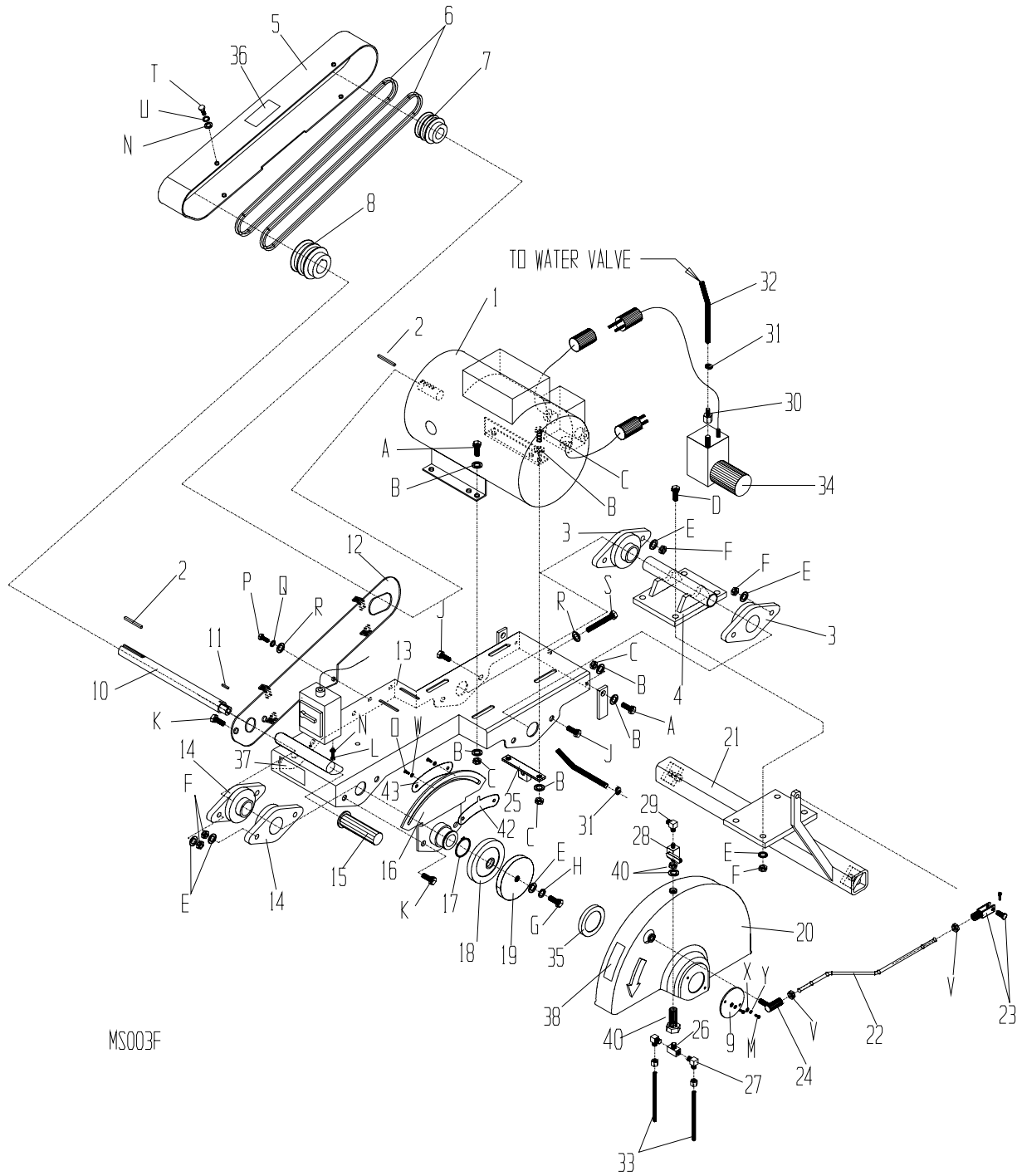
Remarks: ^ Not Shown

Included in 23046 Plumbing Kit

+ Included in 23074/23075 Kit Blade Guard

Parts List

Professional - Electric Cutting Head Assembly



Parts List

Professional - Electric Cutting Head Assembly

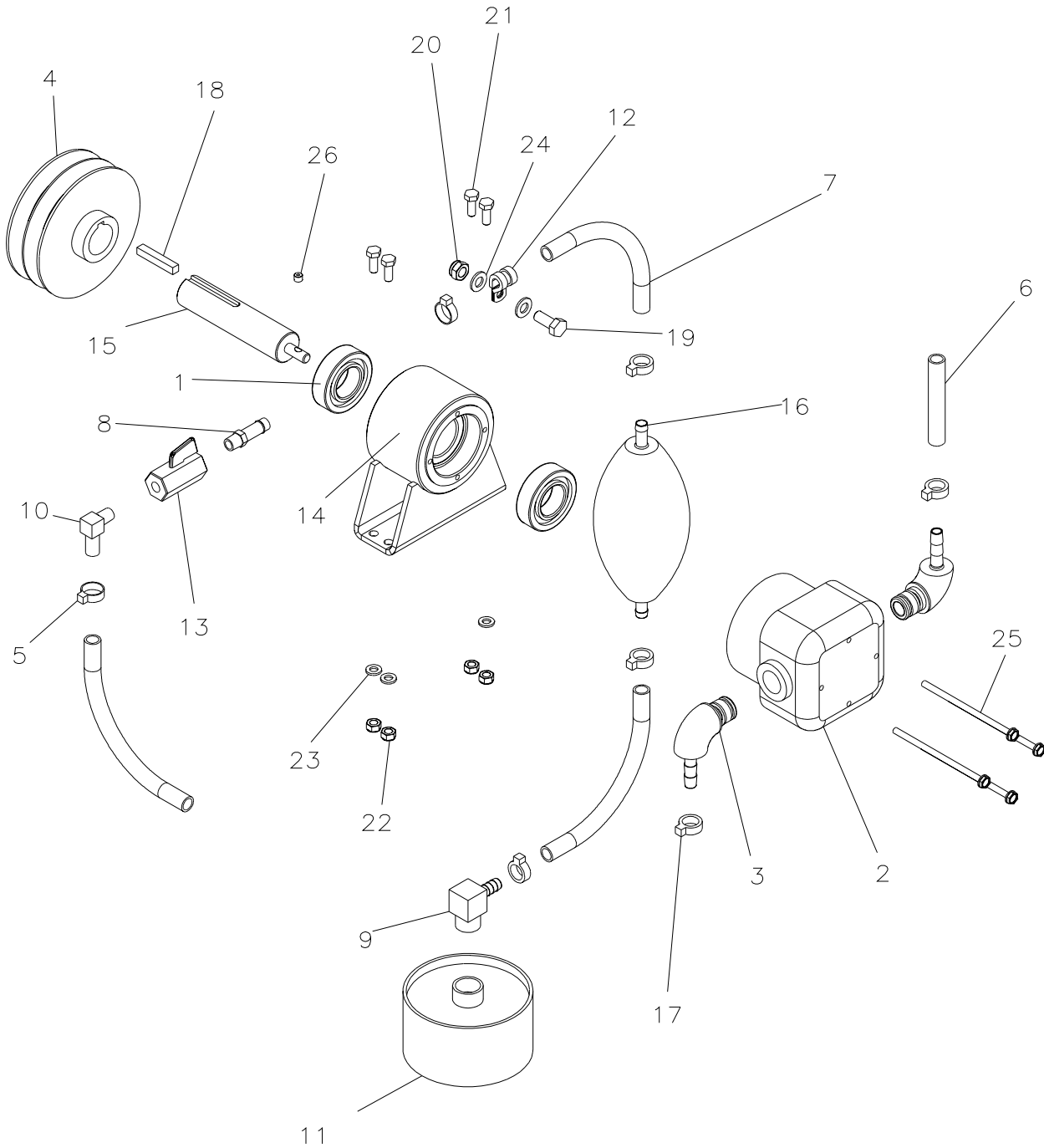
Item	Part No.	Description	Qty.	Torque (NM) (LB.FT.)	
34	23341	Kit Pump & Plug Electric 230V	1		
35+	37283	Bushing Guard Blade	1		
36	55289	Decal Caution Moving Part	1		
37	55285	Decal Caution Saw Icon	1		
38	55287	Decal Caution Lift Guard	1		
39	43869	Key Sq 1/8 x .75 LG	1		
40	32471	Fitting Water BHUS 5/8 Unf 1/8 Npt	1		
41^	23046	Kit Plumbing Pro	1		
42	44352	Spacer Blade Guard	1		
43	44396	Spacer Blade Guard	1		
A	80815	HHCS M10 - 1.5 X 30 8.8 ZN	4	42	32
B	80806	WSHR M10 Flat 20 OD ZN	12	-	-
C	80833	NUTNY M10 - 1.5 ZN	6	-	-
D	80844	HHCS M12 - 1.75 x 50 8.8 ZN	4	72	54
E	80807	WSHR M12 Flat 24 OD ZN	12	-	-
F	80830	NUTNY M12 - 1.75 ZN	12	-	-
G	80843	HHCS M12 - 1.75 x 30 8.8 ZN	1	72	54
H	80805	WSHRL M12 Split	1	-	-
J	80913	HHCS M12 - 1.75 x 40 8.8 ZN	4	-	-
K	80844	HHCS M12 - 1.75 x 50 8.8 ZN	4	72	54
L	80152	HHCS 1/4 - 20 x 1/2 ZN	2	18	12
M+	81033	BHSCS M5 - .8 x 16 8.8 SS	2	8	6
N	80856	WSHR M6 Flat 12 OD ZN	6	-	-
O	81020	SHSHB DIA M6 Thd M5 x 10mm LG	2	18	12
P	80406	HHCS M8 - 1.25 x 20 8.8 ZN	1	21	16
Q	80812	WSHRL M8 Split ZN	1	-	-
R	80857	WSHR M8 Flat 16 OD ZN	2	-	-
S	80743	HHTB 5/16 - 18 x 4-1/2 ZN	1	21	16
T	80758	HHCS M6 - 1 x 20 8.8 ZN	4	18	12
U	80860	WSHRL M6 Split ZN	4	-	-
V	80242	NUTFX 3/8 - 24 ZN	2	-	-
W+	81175	WSHBL 1/4in x 9/16in SS	4	-	-
X+	80855	WSHR M5 Flat 10 OD ZN	2	-	-
Y+	80859	WSHRL M5 Split ZN	2	-	-

Remarks:

- ^ Not Shown
- # Included in 23046 Plumbing Kit
- + Included in 23074/23075 Kit Blade Guard

Parts List

Portable/Professional Gas - Water Pump Assembly



Parts List

Portable/Professional Gas - Water Pump Assembly

Item	Part No.	Description	Qty.	Torque (NM) (LB.FT.)
1+	32467	Bearing Ball 2 OD x 1 ID	2	
2+	32468	Pump	1	
3	32470	Fitting Water 90 6 HB	2	
4	34051	Sheave 2AK44 x 1 Cast	1	
5	34089	Clamp Hose 5/8	2	
6	39150	Hose 3/8 Nylon Braid (MS1)	5 ft	
6a	39150	Hose 3/8 Nylon Braid (MS2)	6.25ft	
7	39217	Barb St 1/8 Npt x 3/8 Hose	1	
8	39243	Barb 3/8 90 deg 5/8 NPT	1	
9	39249	Barb 90 1/8 Npt x 3/8 Hose	1	
10	39262	Strainer Water	1	
11+	39432	Ring, External - .984	1	
12	39509	Clamp 3/8 Rubber Loop	1	
13	44611	Valve Ball Parker MV609	1	
14+	45018-2	Weldment Bearing Housing	1	
15+	45019	Shaft Pump Diaphragm	1	
16	46908	Bulb Primer	1	
17	48356	Clamp Hose 5/8	5	
18	80061	Key SQ 1/4 x 1.50 PLN	1	
19#+	80406	HHCS M8-.251 x 20 8.8 ZN	1	
20	80817	NUTNY M8-1.25 ZN	1	
21	80836	HHCS M6-1 x 16 8.8 ZN	4	
22	80851	NUTNY M6-1 ZN	4	
23	80856	WSHR Flat M6 x 12 OD ZN	3	
24	80857	WSHR Flat M8 x 16 ZN	2	
25	81174	HWHST 10-32 x 3-11/16in ZN with Washer	4	
26	81177	SHSS 1/4-28 x 1/4in Blk Cone Point	1	

Remarks: ^ Not Shown
 # Loctite
 + Included in 23558 Subasm Pump Diaphragm

Parts List








Decal Identification

55285

CAUTION

WHEN OPERATING THIS MACHINE

ALWAYS WEAR SAFETY APPROVED

READ OWNER'S MANUAL KEEP ALL GUARDS IN PLACE HEARING PROTECTION EYE PROTECTION HEAD PROTECTION RESPIRATOR

FAILURE TO COMPLY COULD RESULT IN SERIOUS BODILY INJURY.

55288

DANGER

DO NOT OPERATE GASOLINE POWERED EQUIPMENT WITHOUT ADEQUATE VENTILATION

CARBON MONOXIDE IS AN INVISIBLE, ODORLESS GAS THAT CAN KILL.

55287

CAUTION

DO NOT LIFT GUARD WHEN ENGINE IS RUNNING

FAILURE TO COMPLY COULD RESULT IN SERIOUS BODILY INJURY



USE GASOLINE ONLY

CAUTION

NO SMOKING NO FLAME

FUEL AND VAPORS ARE COMBUSTIBLE

55290

CAUTION

DISCONNECT SPARK PLUG TO PREVENT INJURY WHEN SERVICING OR CHANGING BLADE

55291

PART 17, RULE R408.41719(1)(33) REF NFPA 70-1975 PAR. 250-21a

WARNING

For your safety the above regulation does not allow any three wire electric motor to have a 110V pigtail for accessories. For the water pump please supply an extension cord from a proper GFI protected outlet.

55289

CAUTION

MOVING PARTS

KEEP HANDS FEET AND LOOSE CLOTHING CLEAR



HOT SURFACES

MUFFLER, ENGINE, AND ENGINE SHROUD MAY BE HOT



SHOCK HAZARD

BE SURE THAT ELECTRICAL EQUIPMENT IS PROPERLY GROUNDED



FAILURE TO COMPLY COULD RESULT IN SERIOUS BODILY INJURY

Parts List

Decal Identification

Item	Part No.	Description	Qty.
1	55285	Decal, Caution Saw Icon	1
2	55287	Decal, Caution Lift Guard	1
3	55288	Decal, Danger Carbon Monoxide	1
4	55289	Decal, Caution Moving Parts	1
5	55290	Decal, Caution No Smoke	1
6	55291	Decal, Caution Spark Plug	1
7	55391	Decal, Warning No Pigtail	1
^	23261	Kit Decals Warning Elec (Includes Items 55156,1,2,3,4,5,7)	1
^	23262	Kit Decals Warning (Includes Items 55156,1,2,4,)	1

Remarks: ^ Not Shown



CALIFORNIA PROPOSITION 65 WARNING:
Operation of this equipment and/or engine
exhaust from this product contains chemicals
known to the State of California to cause cancer,
birth defects, or other reproductive harm.



Stone Construction Equipment, Inc.
P.O. Box 150, Honeoye, New York 14471
Phone: 1-800-888-9926
Fax: 1-585-229-2363
e-mail: sceny@stone-equip.com
www: stone-equip.com

A 100% employee-owned American manufacturer
© 1997 Stone Construction Equipment, Inc.
Printed in U.S.A.