

TELEHANDLER

MODELS

742, 944 and 1155



Mustang Telehandlers — Putting Power, Flexibility and Precision to Work

Mustang introduces a new era in construction machine engineering excellence — the Mustang Telehandler, an all-purpose telescopic toolhandling machine that will become an indispensable part of a productive day on the job. Mustang Telehandlers adapt to a wide range of job site demands, consolidating jobs once done by many machines, greatly reducing your overhead.

Industry-leading lift capacities put the Mustang Telehandler in a class of its own. With lift heights ranging from 42 to 55 feet and maximum lift capacities of 7,000, 9,000 and 11,000 pounds, the Mustang family of three Telehandler models provides an industry-unique array of application options.

Mustang Telehandlers combine tough, solid structure with precise toolhandling and maneuvering abilities. An adjustable boom speed control system, three steering modes, a tight-turning radius — and the Work Platform Safety (WPS) System and radio remote boom control options — all combine to expand Mustang Telehandler job duties in the field, strengthening your bottom line.

The proven performance of the 115 hp engine gives you amazing power and control.



Low-Profile and High-Profile Options

The Mustang Telehandler — the 742, 944 and 1155 are available in both low-profile and high-profile boom configurations. The low-profile boom offers 360 degrees of visibility around the machine while the high-profile boom — with its wide-open view of the right rear frame area — provides excellent movement into tight areas.



Getting into tight corners — and getting out — while moving loads through tough, muddy conditions on the job site is easy with a Mustang Telehandler. With a 146-inch outside turning radius, 20 degrees of frame tilt and three different steering modes, this large, heavy-duty machine becomes a nimble traveler. And with maximum forward reach of up to 40 feet, Mustang's Telehandler can overcome challenging obstacles and uncooperative terrain with ease.



A tilt-away oil cooler assembly and an easy-to-clean radiator allow for quicker routine engine maintenance.



The rear axle stabilizer cylinder provides a stable foundation for the outstanding lift capacities.



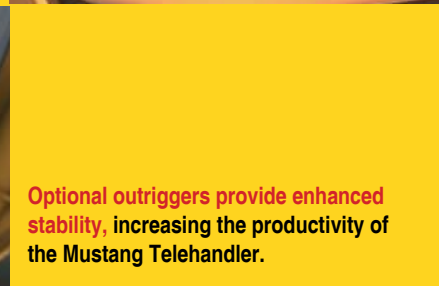
Standard on all Telehandler models, the powerful 115 hp turbocharged engine is side-mounted for easy access.



Front canopy and boom work lights — an optional feature — offers excellent illumination of the work area.



Operators can keep tools, articles of clothing and work accessories tucked safely away in a lockable storage compartment.



Optional outriggers provide enhanced stability, increasing the productivity of the Mustang Telehandler.



The speed of the auxiliary and tilt functions can be adjusted manually using the control valves found in the rear compartment.



Unmatched Versatility on the Job Site

The huge range of Mustang attachment tools available for the Telehandler provides operators with the ability to do just about any job quickly and efficiently.



The Mustang Truss Boom gives operators the ability to position trusses with the utmost precision — up to four stories.



Mustang's Telehandler product design provides the necessary weight, strength and stability characteristics required to support a true tele-loader application. Telehandler models 742 and 944, with their superior loader capabilities, add yet another element to the versatility of the Telehandler. Operators will achieve dump heights and load capacities no wheel loader can handle!



Perform multiple tasks, such as loading, grabbing and digging with a durable Mustang Four-in-One bucket.



Attach a Mustang Auger to your Telehandler for fast hole drilling.



Handle awkward materials with ease using Mustang's Industrial Grapple Bucket.



Mustang Telehandler's rotating carriage allows the operator to match the angle of the landing surface, leading to smooth, uninterrupted placement of objects.



With Mustang Telehandler's circuit selector valve, only one set of auxiliary hydraulic hoses is required to operate both the hydraulic Quickattach II system and the hydraulically powered attachments.



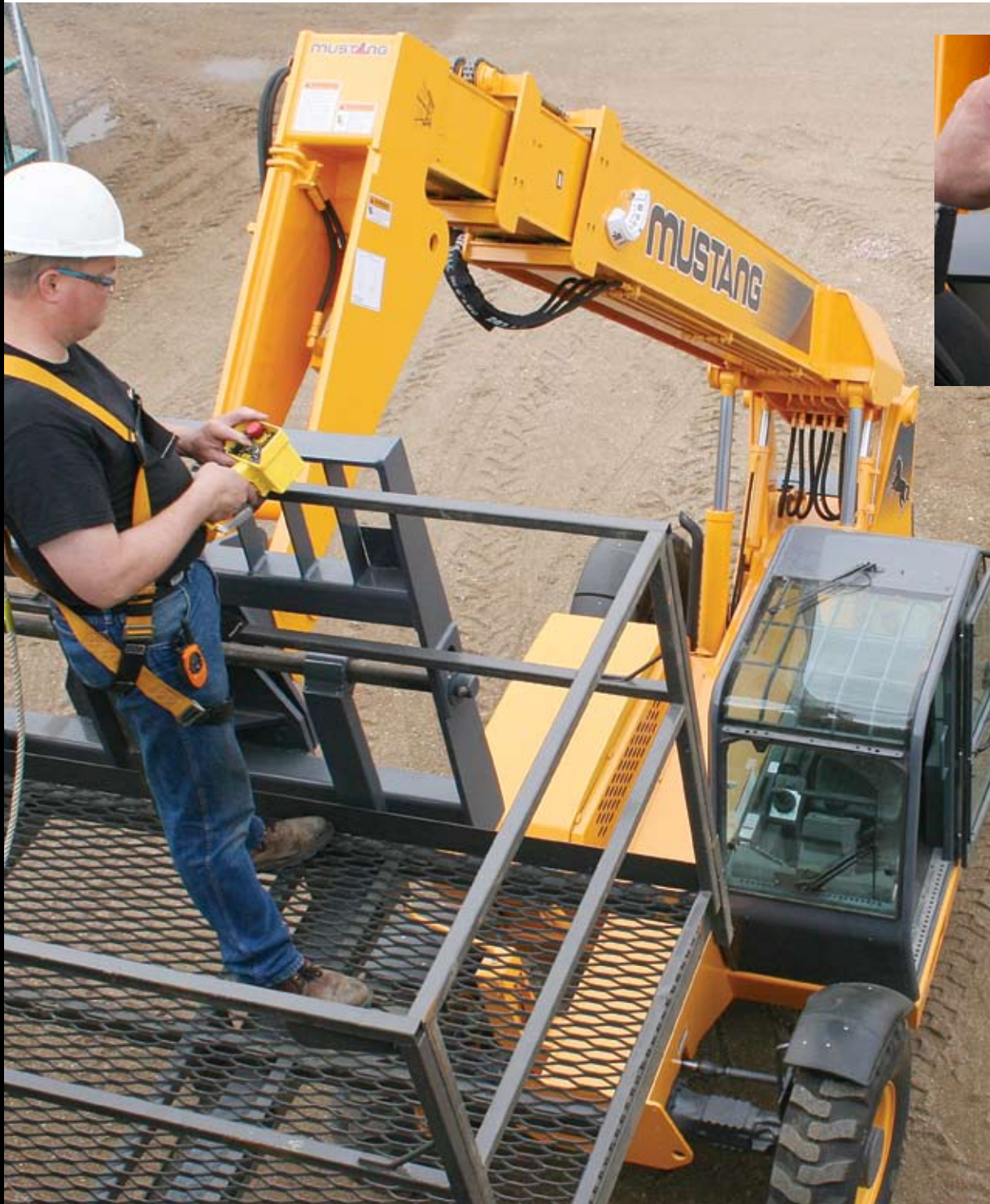
Mustang attachment tool mounting system limits the time it takes to switch tools on the job. For durable digging, the Quickattach II system supports up to 12,500 pounds of breakout force — the best in the industry!



Mustang's Sweeper attachment, equipped with a hydraulic side-swing feature, keeps work surfaces clear of debris.

New Radio Remote Boom Control Option

No longer is an operator required to be in the cab to get another crew member in position. Using any ANSI/ASME-compliant work platform and the radio remote control pendant, a single operator is able to move the boom to other areas of the structure he's working on and lower himself when the task is finished. The remote control can be used with other attachments such as a truss boom. The operator can leave the cab, go to another area where visibility may be better - even go inside the building - and finish placing the load from the remote area. The remote control is waterproof, compact, portable and easy to use. It features self-diagnostics and Frequency-Hopping, Spread-Spectrum (FHSS) technology that randomly changes frequency within a narrow radio band - eliminating the risk of interference with other radio controlled equipment in the area.



The wireless control eliminates cables running through the boom that can be worn or damaged over time.



The WPS System is activated from the operator's station of the Mustang Telehandler.

The Radio Remote Boom Control allows the operator to raise and lower, extend and retract the boom - all from the remote control pendant. Operators can also shut-down or start-up the engine with the remote.

Better Work Environment

Mustang Telehandlers feature unmatched cab options and an ergonomically inspired design that keeps operators' attention on the job. Operators enjoy one of the largest cabin compartments in the industry - 57 cubic feet of interior space. Optimum visibility characteristics provide for a 360-degree visual of the job site. When the boom is up with raised loads - for example, when loading high-sided trucks - roof and right-side glass give good visibility for safer handling.



Enclosed Cab - Optional enclosed cabin helps keep out debris, dirt and foul weather. Exclusive to the industry, the Mustang cab includes a heater and optional air conditioning. Ventilation is made easier with a split door.



Ergonomic Design - An unobstructed view of all gauges and controls in the Telehandler cab keeps operators aware of the machine's functions at all times. Controls are easy to reach and comfortable to operate.

Controls are easy to reach and easy to operate.

Change gears with ease and comfort using the directional/speed control.

Quickly switch from four-wheel steer to two-wheel steer or to crab steering (a great way to place loads close to a barrier).

The Next Generation Joystick - Mustang channels all the dynamics of boom and attachment function into a single, pilot-operated joystick. The four top buttons are thumb activated. The two blue control buttons operate auxiliary functions, determined by the attachment tool in use. The two yellow buttons operate the attachment tool tilt functions. By pressing the red trigger located on the front of the handle, function speeds increase to full capacity.



The tilt steering wheel is just one of the many features that proves Mustang takes operator comfort seriously.