

# Mustang Telehandler 1155

## Technical Specifications

### PERFORMANCE

Max lift capacity	11,000 lbs.	(4990 kg)
Max lift height	55' 1"	(16.7 m)
Lift capacity at max height	5,500 lbs.	(2495 kg)
Max reach	40' 9"	(12.4 m)
Lift capacity at max reach	2,000 lbs.	(907 kg)
Max reach below ground	23"	(584 mm)
Total bucket rotation	132°	
Parallel lift	Standard	
Number of boom stages	4	
Stabilizers used for lift data?	Yes	
Optional loader buckets, capacities	1.3 cu. yds.	(994 L)

### ENGINE

Engine make	Deere	
Engine model	4045T	
Aspiration	Turbo	
Engine power (gross)	115 hp	(86 kW)
Rated speed	2,500 rpm	
No of cylinders	4	
Displacement	276 cu. in.	(4.5 L)

### DRIVE TRAIN

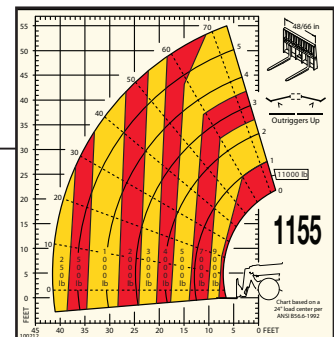
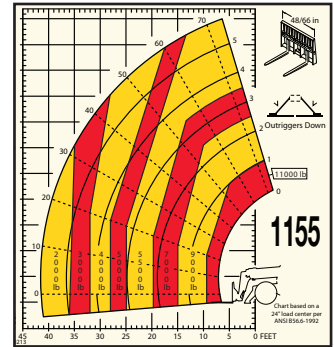
Transmission type	Powershift	
No of speeds fwd/rev	4 / 2	
Max travel speed	22.8 mph	(37 km/h)
Steering system	4WS (3 mode)	
Service brake type	Wet multiple disc	
Parking brake type	Spring applied/hyd. release	
Tire size	14.00x24	

### HYDRAULICS

Pump type	Dual gear	
Total capacity	43 gpm	(163 L/min)
System pressure	3,000 psi	(207 bar)
Hydraulic tank capacity	45 gal.	(170 L)

### DIMENSIONS

Length to fork face	21' 2"	(6.4 m)
Wheelbase	10' 8"	(3.2 m)
Width	8' 3"	(2.5 m)
Height, boom down	7' 11"	(2.4 m)
Ground clearance	16"	(406 mm)
Turning radius over tires, brakes off	12' 2"	(3.7 m)
Frame leveling	±10°	
Weight	28,460 lbs.	(12909 kg)



1880 Austin Road  
 Owatonna, MN 55060-0547  
 Phone: 507-451-7112  
 Fax: 507-451-8209  
 www.mustangmfg.com