

Light Kit Installation: Mortar Mixer (T) Frame



www.Discount-Equipment.com

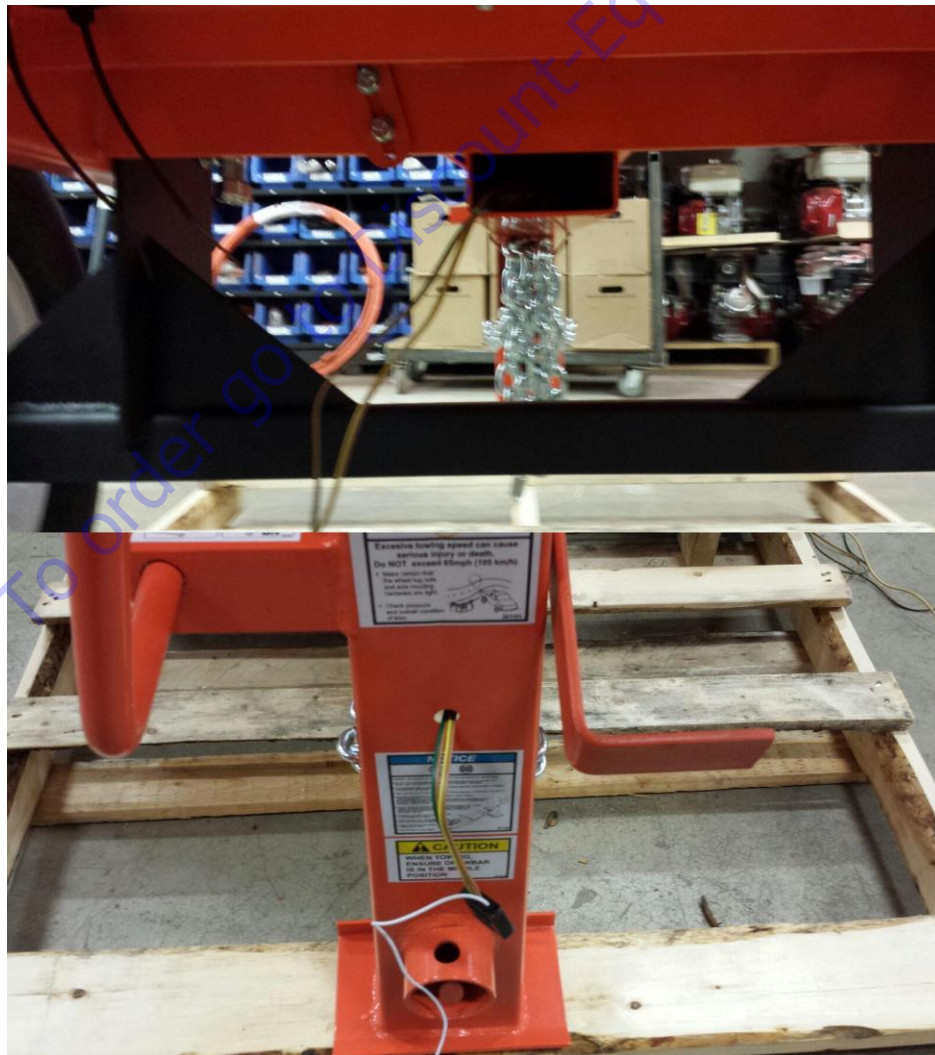
IMPORTANT ALWAYS INSTALL & COMPLETE GROUND WIRE INSTALLATION BEFORE ANYTHING ELSE. THIS WILL DETERMINE CABLE LENGTH BETWEEN MIXER AND VEHICLE!!! IMPORTANT!!!

GROUND WIRE INSTALLATION

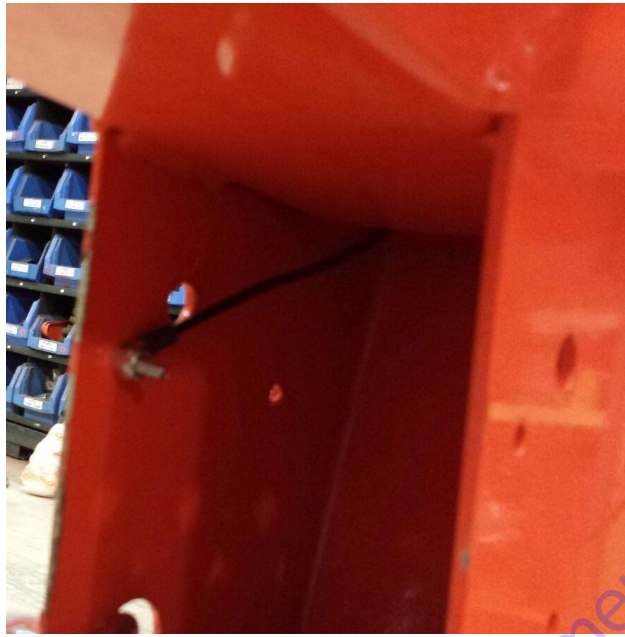
- 1) Open light kit and remove extra wire harness that connects to vehicle, and set it aside.
- 2) Connect bullet connector (male) & ring terminal to 24" wire.



- 3) Run main light kit wire through the hole (front leg) and through the frame.



4) Attach ground wire (Step 1) to frame. Use a 10-32 bolt and nut. Remaining wire should be inserted back into the hole the main light kit wire is through.

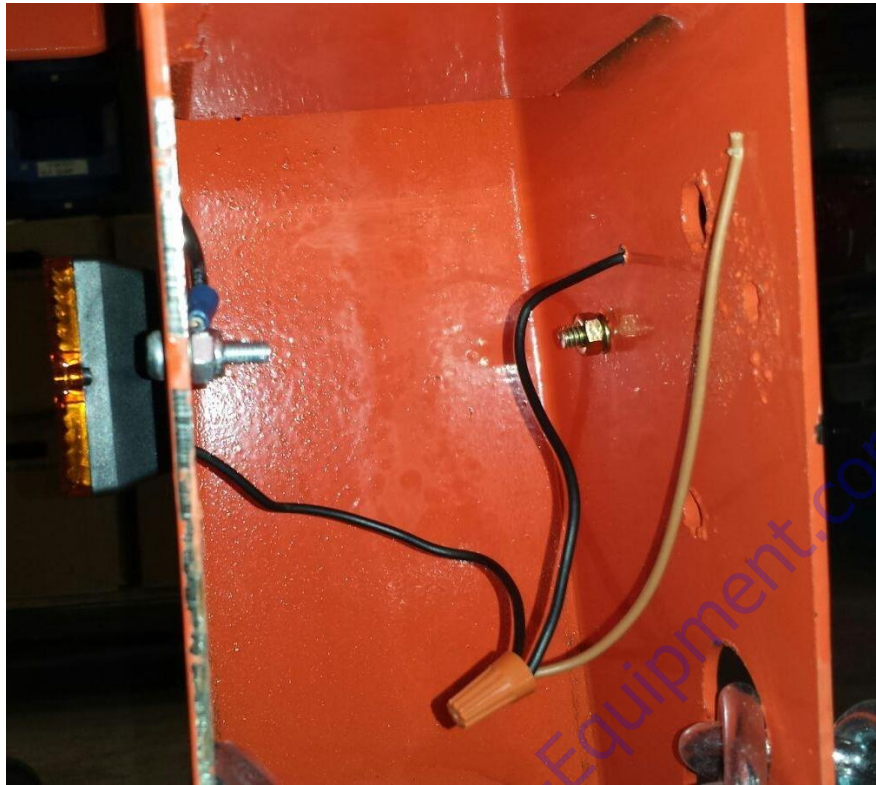


5) Attach bullet receptacle (female) to white wire on light kit main wire. Connect male & female, use electrical tape to seal male & female together, then bind wires together.

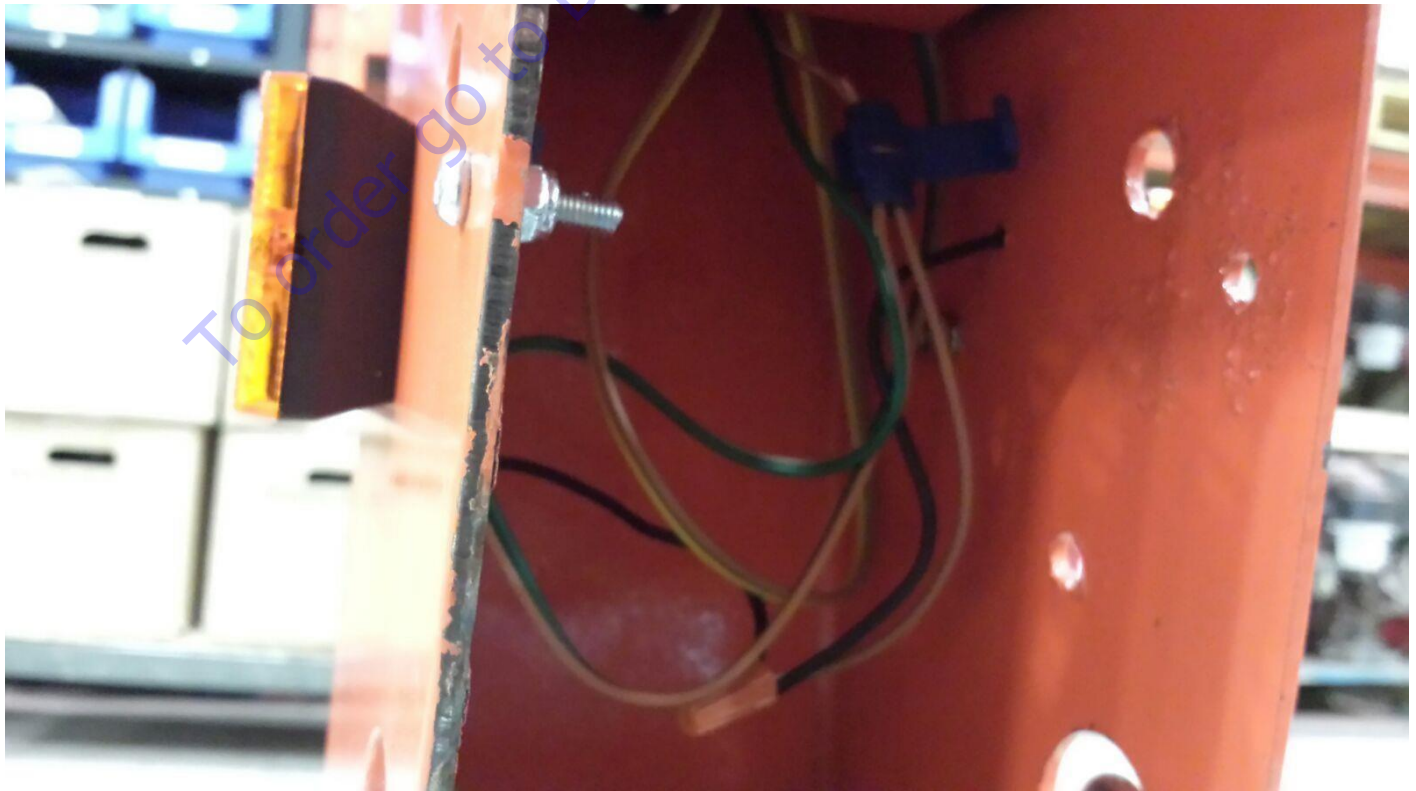


FRONT LIGHTS INSTALLATION

6) Attach lights to front leg after tightening them, cross weave front light wires with a single 4" wire. Use the Twist-on wire connectors (Marette) to lock them together.



7) Connect the 4" wire (connecting front lights) to the light brown wire on the main light kit wire using the tap connector.



8) Once attached shove extra excess wires back into the frame. Slightly pull wires from the back & front of mixer to ensure wires are snug in the frame and not loose.



9) Install adhesive cable mounts & frame wire clips to hood area.



10) Keep wire tight throughout process.



11) Tighten license plate holder and lights to inside of the hood. From the adhesive cable mount from top of the hood, there should be 4 feet of wire. Cut the extra off. Tie the extra 4 feet of wire remaining to the extra connection wire that came with light kit. Tape it to the license plate holder.



**Discount
Equipment**

www.Discount-Equipment.com