



DIS185SSI4F Air Compressor

A-Frame Installation Instructions



www.Discount-Equipment.com

The following instructions are intended to assist the user in the installation of the trailer A-frame for use on the DIS185SSI4F air compressor. Please read all assembly instructions before installing the kit.

REQUIRED TOOLS

- Forklift/Crane/Hoist
- Heavy Duty Jack Stands (2)
- 12mm, 13mm, 19mm open-ended wrenches
- 3/8" Ratchet w/ 12mm, 13mm, 19mm sockets
- Torque Wrench

PARTS

Verify that all parts are accounted for. See Figure 1 and Table 1.

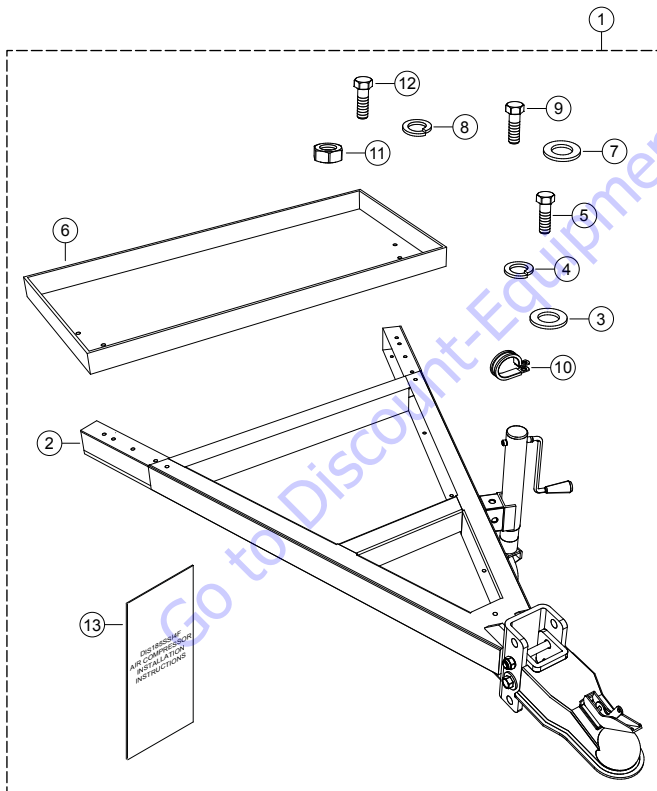


Figure 1. DIS185SSI4F A-Frame Installation Kit

Table 1. DIS185SSI4F A-Frame Installation Kit

Item No.	Part No.	Description	QTY.	Remarks
1	TBD	Kit, DIS185SSI4F A-Frame Installation	1	Includes items 2,13
2		Compressor A-Frame	1	Includes items 3-5
3		M12 Flat Washer	6	Obtain Locally
4		M12 Spring Washer	6	Obtain Locally
5		M12-1.75 x 30mm Screw	6	Obtain Locally
6		Compressor Tool Tray	1	Includes items 7-9
7		M8 Flat Washer	4	Obtain Locally
8		M8 Lock Washer	4	Obtain Locally
9		M8-1.25 x 15mm Screw	4	Obtain Locally
10		1/4-20 x 3/4" G-Clamp	6	Includes items 11-12
11		1/4-20 Nut	6	Obtain Locally
12		1/4"-20 Screw	6	Obtain Locally
13		Instructions, DIS185SSI4F A-Frame Installation	1	

WORK SAFELY!

Only a **qualified service technician** with proper training should perform this installation. Follow all shop safety rules when performing this installation.

PREPARATION

1. Make sure air compressor is turned off and engine is cool.
2. Place the air compressor in an area free of dirt and debris. Make sure it is on secure level ground with chock blocks underneath each wheel to prevent the air compressor from rolling.

PARTS FINDER

**Search Website
by Part Number**



**Search Manual
Library For Parts
Manual & Lookup Part
Numbers – Purchase
or Request Quote**

Search Manuals

Enter the information below to search our manual library for parts.

* Brand:

* Model:

* Serial:

* Part Number:

* Search:

**Can't Find Part or
Manual? Request Help
by Manufacturer,
Model & Description**

Parts Order Form

Please fill in the information below to request help finding a part or manual.

Manufacturer:

Model:

Description:

Quantity:

Part Number:

Part Name:

Part Description:

Part Location:

Part Condition:

Part Status:

Part Date:

Part Price:

Part Location:

Part Condition:

Part Status:

Part Date:

Part Price:

Part Location:

Part Condition:

Part Status:

Part Date:

Part Price:

Discount-Equipment.com is your online resource for quality parts & equipment.

Florida: **561-964-4949** Outside Florida TOLL FREE: **877-690-3101**

Need parts?

Click on this link: <http://www.discount-equipment.com/category/5443-parts/> and choose one of the options to help get the right parts and equipment you are looking for. Please have the machine model and serial number available in order to help us get you the correct parts. If you don't find the part on the website or on once of the online manuals, please fill out the request form and one of our experienced staff members will get back to you with a quote for the right part that your machine needs.

We sell worldwide for the brands: Genie, Terex, JLG, MultiQuip, Mikasa, Essick, Whiteman, Mayco, Toro Stone, Diamond Products, Generac Magnum, Airman, Haulotte, Barreto, Power Blanket, Nifty Lift, Atlas Copco, Chicago Pneumatic, Allmand, Miller Curber, Skyjack, Lull, Skytrak, Tsurumi, Husquvarna Target, , Stow, Wacker, Sakai, Mi-T- M, Sullair, Basic, Dynapac, MBW, Weber, Bartell, Bennar Newman, Haulotte, Ditch Runner, Menegotti, Morrison, Contec, Buddy, Crown, Edco, Wyco, Bomag, Laymor, Barreto, EZ Trench, Bil-Jax, F.S. Curtis, Gehl Pavers, Heli, Honda, ICS/PowerGrit, IHI, Partner, Imer, Clipper, MMD, Koshin, Rice, CH&E, General Equipment, ,AMida, Coleman, NAC, Gradall, Square Shooter, Kent, Stanley, Tamco, Toku, Hatz, Kohler, Robin, Wisconsin, Northrock, Oztec, Toker TK, Rol-Air, Small Line, Wanco, Yanmar

PREPARATION

1. Open the left side cabinet door of the air compressor to gain access to the engine and battery location.
2. Disconnect negative cable (**BLACK**) from the negative terminal on the battery. See Figure 2.

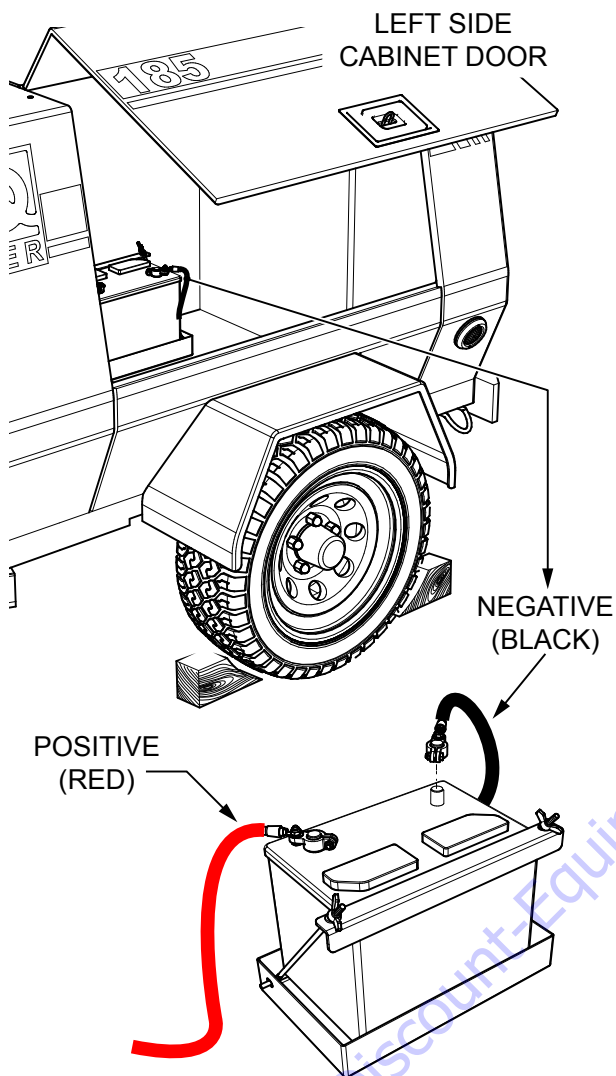


Figure 2. Battery Cable Disconnection

LIFTING THE AIR COMPRESSOR

1. Attach one end of a lifting strap or chain (Figure 3) around the lifting point on top of the air compressor. Attach the other end of the lifting strap or chain to the lifting device.
2. Next, place the air compressor on heavy duty jack stands (2) as shown in Figure 3.

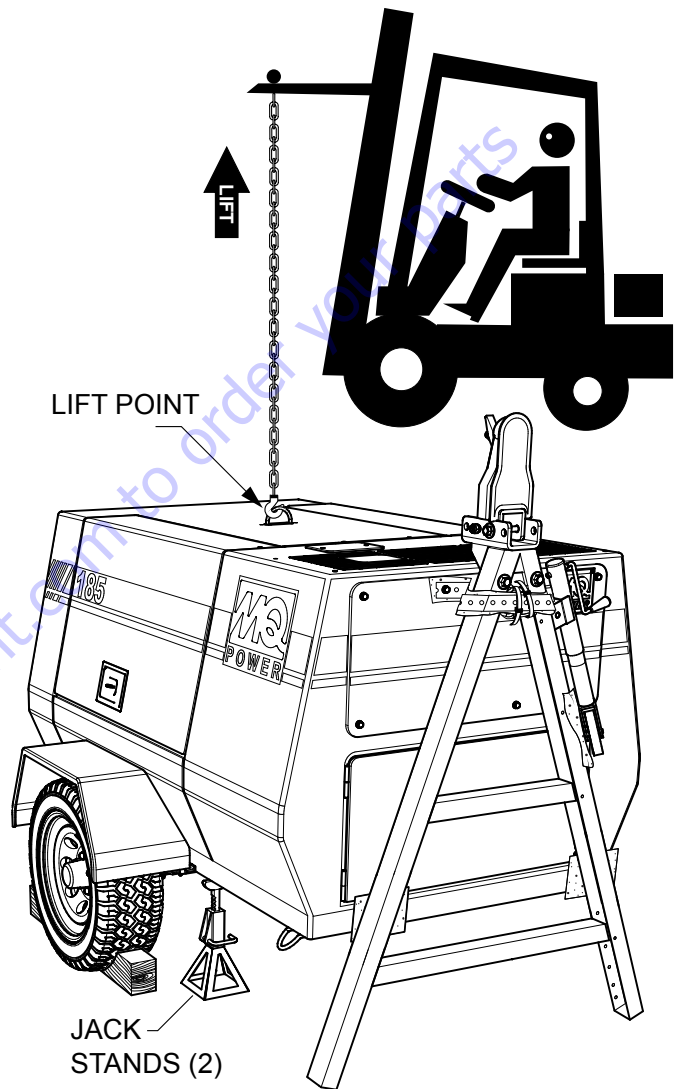


Figure 3. Raising Air Compressor

UNSECURING TRAILER A-FRAME

NOTICE

Two persons may be required to safely unsecure the trailer A-frame from the air compressor.

1. Using a 13mm socket, remove the two muffler panel M8-1.25 x 15mm screws and M8 flat washers (Figure 4) that secure the trailer A-frame metal fastening ribbon.
2. Using a 19mm socket, remove the M12-1.75 x 30mm screws, M12 lock washers, M12 nuts, and M12 flat washers (2) that secure the trailer A-frame (Figure 4) to the air compressor frame.
3. Remove the A-frame.
4. Remove protective materials that may be placed between the A-frame and air compressor.
5. Reinstall and tightly secure the hardware (Figure 4) removed in Step 1 and Step 2.

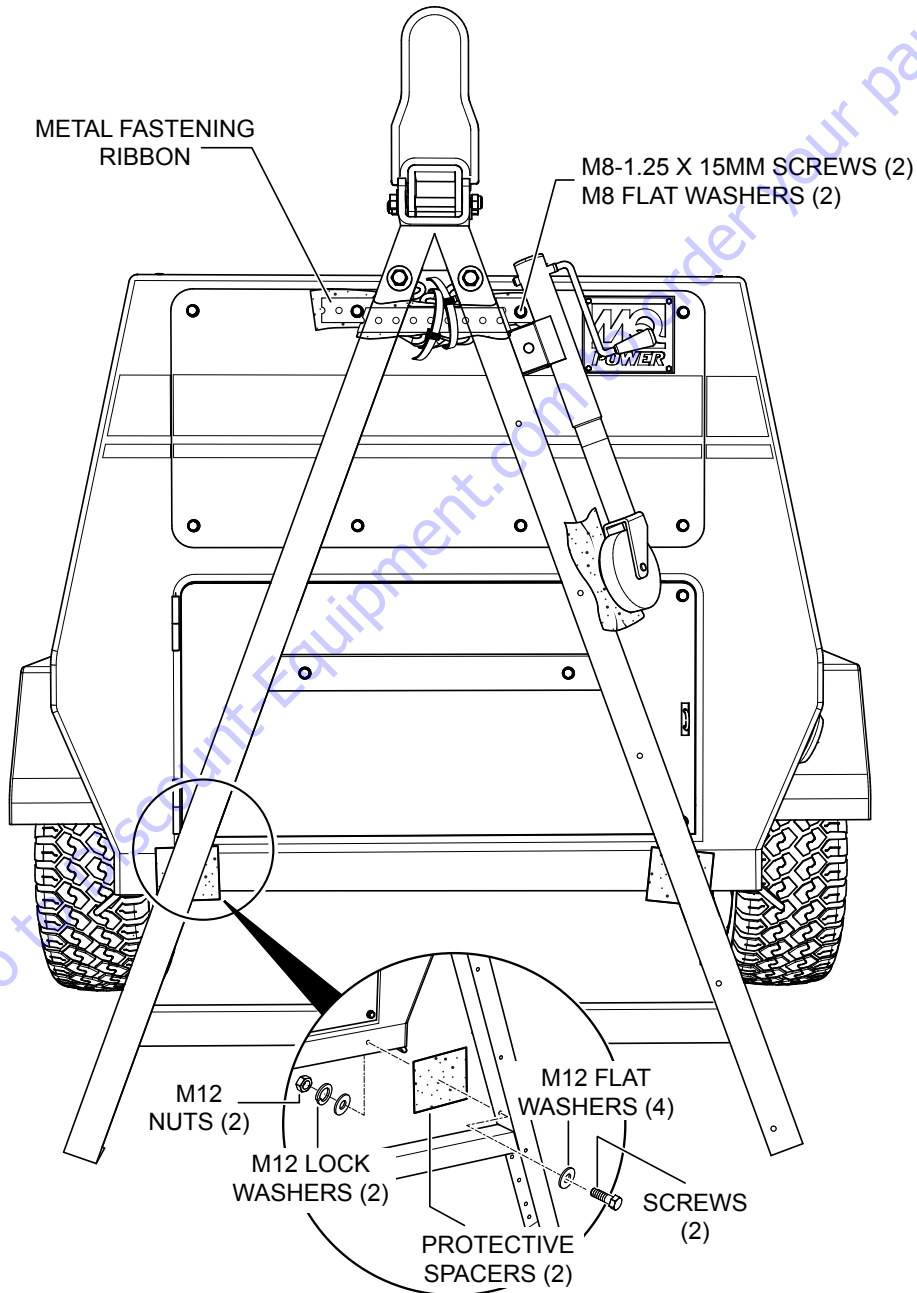
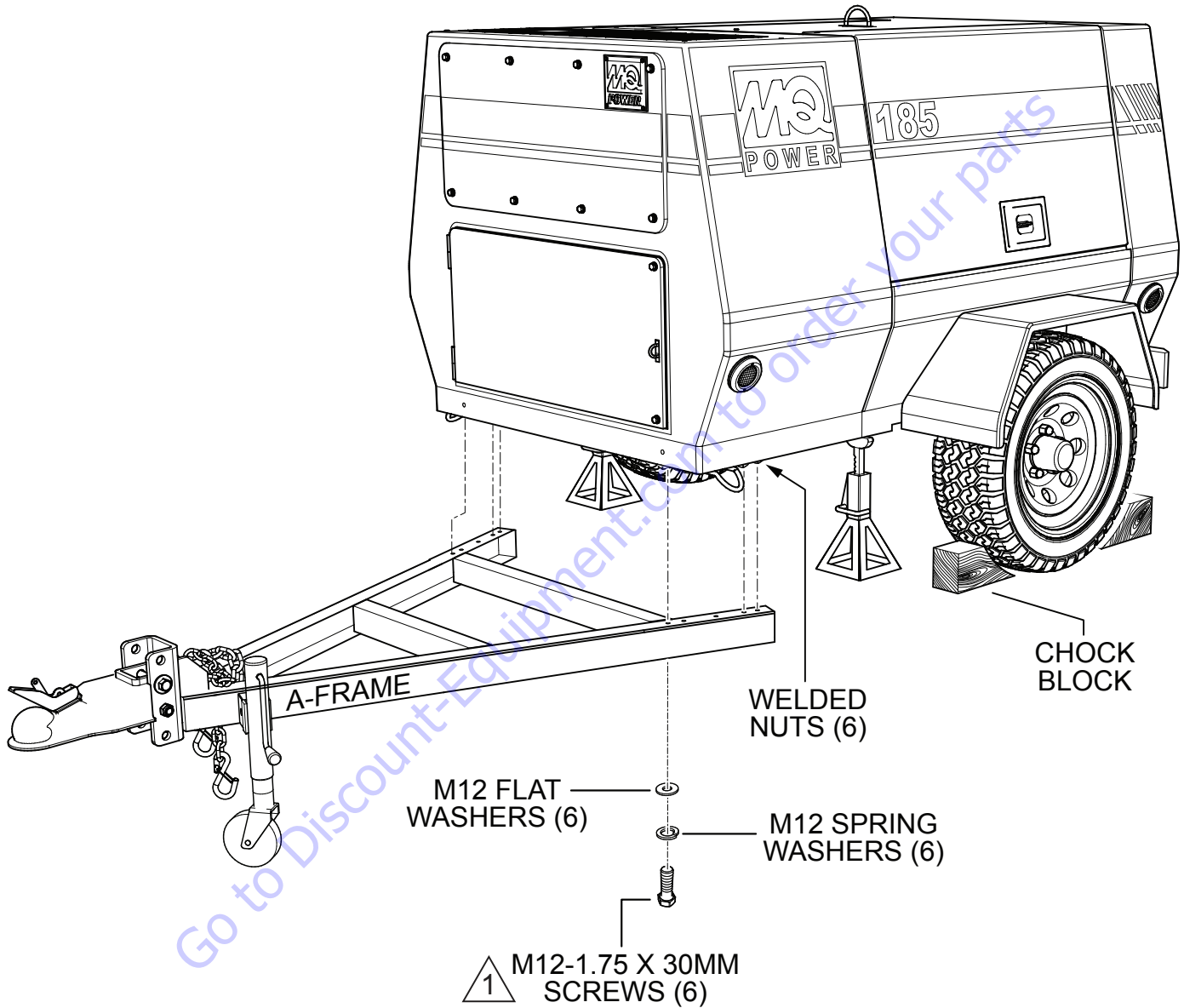


Figure 4. Removing Trailer A-Frame

A-FRAME INSTALLATION

1. Working with another person, raise and align the A-frame mounting holes (6) with the air compressor frame welded nuts (6) as shown in Figure 5.
2. Continue holding the A-frame in alignment and using a 19mm socket, secure the A-frame to the air compressor frame using six M12-1.75 x 30mm screws, M12 flat washers, and M12 spring washers.
3. Torque hardware to 68.6 ft-lbs (93 N•m).



NOTE:

- 1 TORQUE HARDWARE TO 68.6 ft-lbs (93 N•m).

Figure 5. A-Frame Installation

TOOL TRAY INSTALLATION

1. Open the left side cabinet panel of the air compressor and locate the tool tray and tool tray mounting hardware.
2. Turn the storage compartment door thumb screws (2) (Figure 6) counterclockwise and open the panel.
3. Insert the tool tray in the open space behind the storage compartment door and align the mounting holes (Figure 6) with the four A-frame welding nuts.
4. Using a 13mm socket, secure the tool tray to the A-frame (Figure 6) using four M8-1.25 x 15mm screws, M8 lock washers, and M8 flat washers.

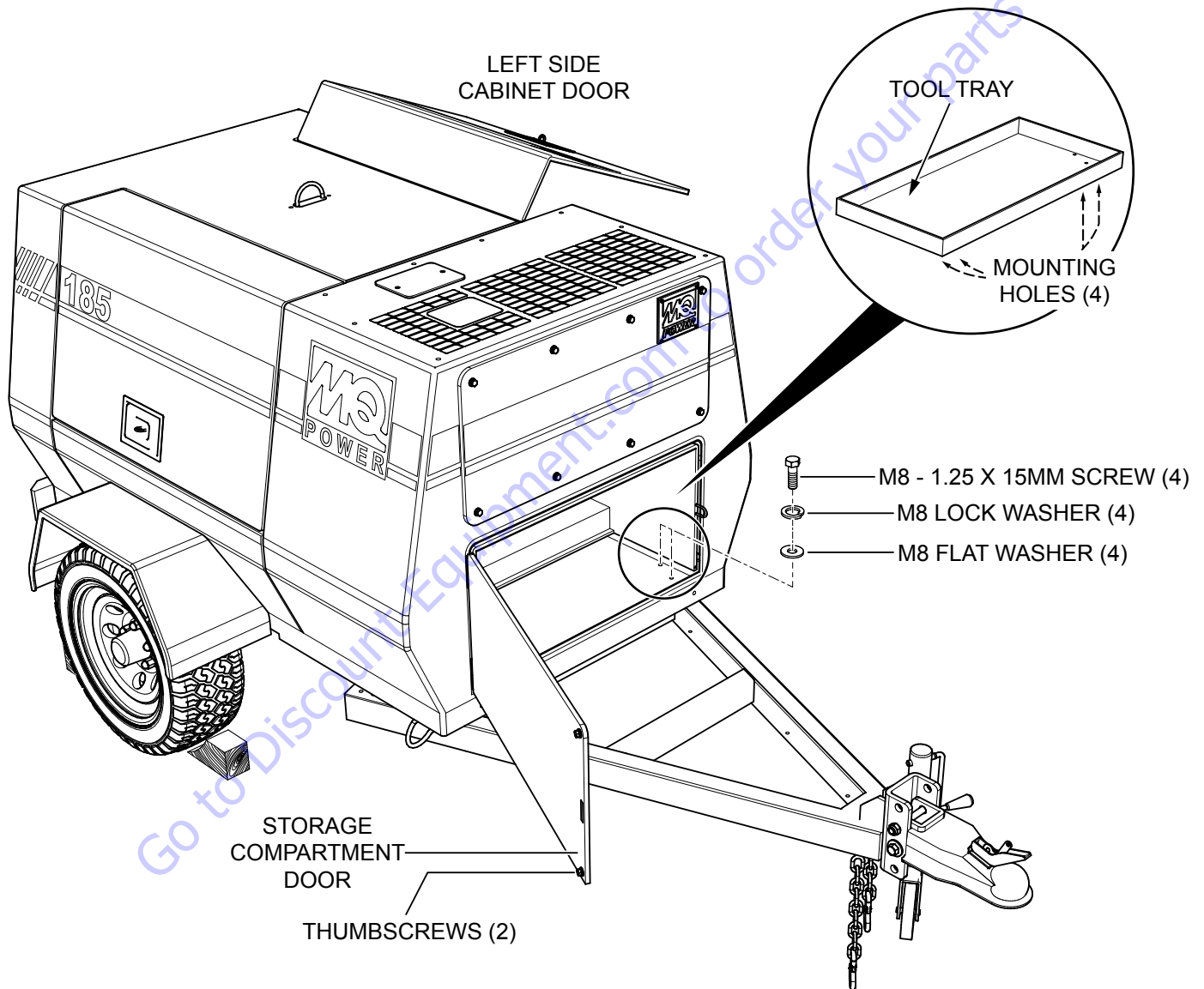


Figure 6. Tool Tray Installation

WIRE ROUTING INSTALLATION

1. Open the left side cabinet panel of the air compressor and locate the coiled wire harness.
2. Locate the six 1/4-20 x 3/4" G-clamps, 1/4" screws, and 1/4" nuts in the kit.
3. Route the loose portion of the wire harness through the hole at the bottom (Figure 7) of the air compressor frame.
4. Route the loose portion of the wire harness along the A-frame to the A-frame tongue.
5. Using a 12mm socket, secure the wire harness to the A-frame using six 1/4-20 x 3/4" G-clamps, 1/4" screws, and 1/4" nuts.

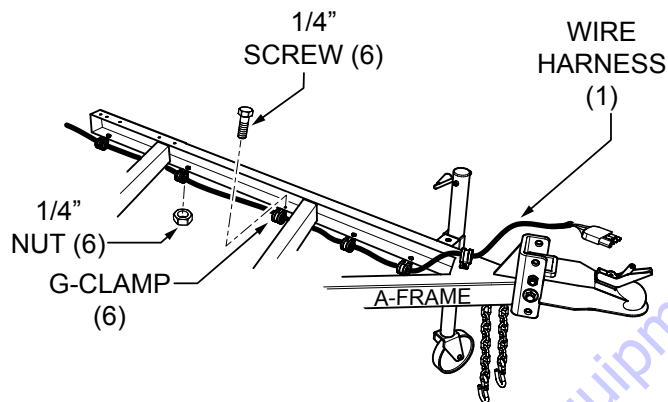


Figure 7. Wiring and G-Clamp Installation

POST-INSTALLATION

1. Check that the A-frame and tool tray are secured tightly.
2. Remove the two heavy duty jack stands from the air compressor.
3. Using the lifting device, slowly lower the air compressor until the A-frame jackstand supports the weight of the air compressor.
4. Remove the lifting strap or chain from the lifting point on top of the air compressor.

PARTS FINDER

**Search Website
by Part Number**



**Search Manual
Library For Parts
Manual & Lookup Part
Numbers – Purchase
or Request Quote**

A screenshot of the "Search Manuals" form. It includes fields for "Brand", "Model", "Serial", "Part Number", and "Quantity". There are also dropdown menus for "Year" and "Make". A "Search" button is located at the bottom of the form.

**Can't Find Part or
Manual? Request Help
by Manufacturer,
Model & Description**

A screenshot of the "Parts Order Form". It includes fields for "Manufacturer", "Model", "Description", "Part Number", "Quantity", "Price", and "Notes". There are also checkboxes for "Request Quote" and "Purchase".

Discount-Equipment.com is your online resource for quality parts & equipment.

Florida: **561-964-4949** Outside Florida TOLL FREE: **877-690-3101**

Need parts?

Click on this link: <http://www.discount-equipment.com/category/5443-parts/> and choose one of the options to help get the right parts and equipment you are looking for. Please have the machine model and serial number available in order to help us get you the correct parts. If you don't find the part on the website or on once of the online manuals, please fill out the request form and one of our experienced staff members will get back to you with a quote for the right part that your machine needs.

We sell worldwide for the brands: Genie, Terex, JLG, MultiQuip, Mikasa, Essick, Whiteman, Mayco, Toro Stone, Diamond Products, Generac Magnum, Airman, Haulotte, Barreto, Power Blanket, Nifty Lift, Atlas Copco, Chicago Pneumatic, Allmand, Miller Curber, Skyjack, Lull, Skytrak, Tsurumi, Husquvarna Target, , Stow, Wacker, Sakai, Mi-T- M, Sullair, Basic, Dynapac, MBW, Weber, Bartell, Bennar Newman, Haulotte, Ditch Runner, Menegotti, Morrison, Contec, Buddy, Crown, Edco, Wyco, Bomag, Laymor, Barreto, EZ Trench, Bil-Jax, F.S. Curtis, Gehl Pavers, Heli, Honda, ICS/PowerGrit, IHI, Partner, Imer, Clipper, MMD, Koshin, Rice, CH&E, General Equipment, ,AMida, Coleman, NAC, Gradall, Square Shooter, Kent, Stanley, Tamco, Toku, Hatz, Kohler, Robin, Wisconsin, Northrock, Oztec, Toker TK, Rol-Air, Small Line, Wanco, Yanmar



DIS185SSI4F Air Compressor

A-Frame Installation Instructions



www.Discount-Equipment.com

Go to Discount-Equipment.com to order your parts

