

PARTS MANUAL



MODEL DIS185SSI4F Air Compressor (ISUZU 4LE2T DIESEL ENGINE)

PARTS LIST NO. E2871203504

Revision #3 (09/04/19)



www.Discount-Equipment.com

THIS MANUAL MUST ACCOMPANY THE EQUIPMENT AT ALL TIMES.

PARTS FINDER

**Search Website
by Part Number**



**Search Manual
Library For Parts
Manual & Lookup Part
Numbers – Purchase
or Request Quote**

Search Manuals

Enter your manual number or part number to search for a part.

* Part # _____
Serial Number _____
* Make _____

Serial _____
Serial Number Prefix _____

Part Number _____
Serial Number Suffix (Optional) _____

Comments _____
Serial Number Run This Part Lookup For _____

**Can't Find Part or
Manual? Request Help
by Manufacturer,
Model & Description**

Parts Order Form

Please fill in as much information as possible to help us find the right part.

| | |
|---------------|-------|
| Manufacturer | _____ |
| Model # | _____ |
| Part # | _____ |
| Serial # | _____ |
| Quantity | _____ |
| Comments | _____ |
| Date Received | _____ |
| Order Code | _____ |
| Name | _____ |
| Address | _____ |
| City | _____ |
| State | _____ |
| Zip | _____ |
| Phone Number | _____ |

Discount-Equipment.com is your online resource for quality parts & equipment.

Florida: **561-964-4949** Outside Florida TOLL FREE: **877-690-3101**

Need parts?

Click on this link: <http://www.discount-equipment.com/category/5443-parts/> and choose one of the options to help get the right parts and equipment you are looking for. Please have the machine model and serial number available in order to help us get you the correct parts. If you don't find the part on the website or on once of the online manuals, please fill out the request form and one of our experienced staff members will get back to you with a quote for the right part that your machine needs.

We sell worldwide for the brands: Genie, Terex, JLG, MultiQuip, Mikasa, Essick, Whiteman, Mayco, Toro Stone, Diamond Products, Generac Magnum, Airman, Haulotte, Barreto, Power Blanket, Nifty Lift, Atlas Copco, Chicago Pneumatic, Allmand, Miller Curber, Skyjack, Lull, Skytrak, Tsurumi, Husquvarna Target, , Stow, Wacker, Sakai, Mi-T- M, Sullair, Basic, Dynapac, MBW, Weber, Bartell, Bennar Newman, Haulotte, Ditch Runner, Menegotti, Morrison, Contec, Buddy, Crown, Edco, Wyco, Bomag, Laymor, Barreto, EZ Trench, Bil-Jax, F.S. Curtis, Gehl Pavers, Heli, Honda, ICS/PowerGrit, IHI, Partner, Imer, Clipper, MMD, Koshin, Rice, CH&E, General Equipment, ,AMida, Coleman, NAC, Gradall, Square Shooter, Kent, Stanley, Tamco, Toku, Hatz, Kohler, Robin, Wisconsin, Northrock, Oztec, Toker TK, Rol-Air, Small Line, Wanco, Yanmar

DIS185SSI4F AIR COMPRESSOR

| | |
|--|---|
| Table Of Contents..... | 2 |
| Explanation Of Code In Remarks Column..... | 4 |
| Suggested Spare Parts | 5 |

Component Drawings

| | |
|--------------------------------------|-------|
| Air End 1 Assembly | 6-7 |
| Air End 2 Assembly | 8-9 |
| Oil Chamber Assembly..... | 10-11 |
| Minimum Pressure Valve Assembly..... | 12-13 |
| Piping 1 Assembly | 14-15 |
| Bypass Thermo Valve Assembly | 16-17 |
| Piping 2 Assembly | 18-19 |
| Engine And Radiator 1 Assembly..... | 20-23 |
| Engine And Radiator 2 Assembly..... | 24-25 |
| Control Box Assembly | 26-27 |
| Battery Assembly..... | 28-29 |
| Muffler Assembly | 30-31 |
| Fuel Tank Assembly..... | 32-33 |
| Enclosure 1 Assembly | 34-35 |
| Enclosure 2 Assembly | 36-39 |
| Rubber Seals Assembly | 40-41 |
| Trailer Assembly | 42-43 |
| Nameplate And Decals Assembly | 44-45 |

NOTICE

Specifications and part numbers are subject to change without notice.

EXPLANATION OF CODE IN REMARKS COLUMN

The following section explains the different symbols and remarks used in the Parts section of this manual. Use the help numbers found on the back page of the manual if there are any questions.

NOTICE

The contents and part numbers listed in the parts section are subject to change **without notice**. Multiquip does not guarantee the availability of the parts listed.

SAMPLE PARTS LIST

| NO. | PART NO. | PART NAME | QTY. | REMARKS |
|-----|----------|----------------------|------|---------------------|
| 1 | 12345 | BOLT | 1 | INCLUDES ITEMS W/% |
| 2% | | WASHER, 1/4 IN. | | NOT SOLD SEPARATELY |
| 2% | 12347 | WASHER, 3/8 IN. ... | 1 | MQ-45T ONLY |
| 3 | 12348 | HOSE | A/R | MAKE LOCALLY |
| 4 | 12349 | BEARING | 1 | S/N 2345B AND ABOVE |

NO. Column

Unique Symbols — All items with same unique symbol (@, #, +, %, or >) in the number column belong to the same assembly or kit, which is indicated by a note in the “Remarks” column.

Duplicate Item Numbers — Duplicate numbers indicate multiple part numbers, which are in effect for the same general item, such as different size saw blade guards in use or a part that has been updated on newer versions of the same machine.

NOTICE

When ordering a part that has more than one item number listed, check the remarks column for help in determining the proper part to order.

PART NO. Column

Numbers Used — Part numbers can be indicated by a number, a blank entry, or TBD.

TBD (To Be Determined) is generally used to show a part that has not been assigned a formal part number at the time of publication.

A blank entry generally indicates that the item is not sold separately or is not sold by Multiquip. Other entries will be clarified in the “Remarks” Column.

QTY. Column

Numbers Used — Item quantity can be indicated by a number, a blank entry, or A/R.

A/R (As Required) is generally used for hoses or other parts that are sold in bulk and cut to length.

A blank entry generally indicates that the item is not sold separately. Other entries will be clarified in the “Remarks” Column.

REMARKS Column

Some of the most common notes found in the “Remarks” Column are listed below. Other additional notes needed to describe the item can also be shown.

Assembly/Kit — All items on the parts list with the same unique symbol will be included when this item is purchased.

Indicated by:

“INCLUDES ITEMS W/(unique symbol)”

Serial Number Break — Used to list an effective serial number range where a particular part is used.

Indicated by:

“S/N XXXXX AND BELOW”

“S/N XXXX AND ABOVE”

“S/N XXXX TO S/N XXX”

Specific Model Number Use — Indicates that the part is used only with the specific model number or model number variant listed. It can also be used to show a part is NOT used on a specific model or model number variant.

Indicated by:

“XXXXX ONLY”

“NOT USED ON XXXX”

“Make/Obtain Locally” — Indicates that the part can be purchased at any hardware shop or made out of available items. Examples include battery cables, shims, and certain washers and nuts.

“Not Sold Separately” — Indicates that an item cannot be purchased as a separate item and is either part of an assembly/kit that can be purchased, or is not available for sale through Multiquip.

SUGGESTED SPARE PARTS

DIS185SSI4F AIR COMPRESSOR WITH ISUZU 4LE2T DIESEL ENGINE

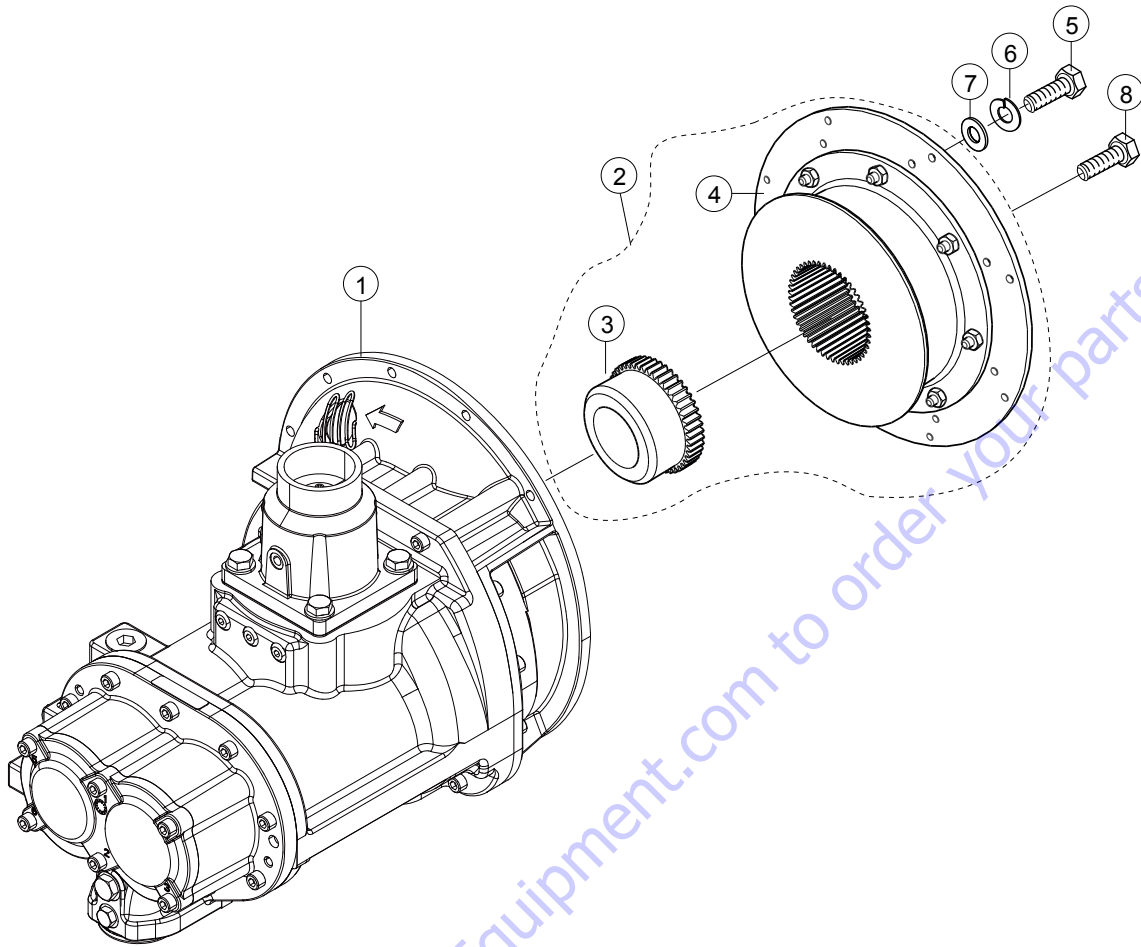
1 TO 3 UNITS

| Qty. | P/N | Description |
|------|-------------|---|
| 3 | Y0602046615 | ELEMENT AIR FILTER, SAFETY (ENGINE) |
| 3 | .0602046366 | ELEMENT, AIR FILTER, PRIMARY (ENGINE) |
| 3 | .0602046365 | ELEMENT AIR FILTER, SAFETY (COMPRESSOR) |
| 3 | Y0602046634 | ELEMENT, AIR FILTER, PRIMARY (COMPRESSOR) |
| 3 | .8980756761 | CARTRIDGE, OIL FILTER (ENGINE) |
| 3 | E2924000214 | CARTRIDGE, OIL SEPARATOR FILTER, (COMPRESSOR) |
| 3 | E2924000354 | CARTRIDGE, OIL FILTER, (COMPRESSOR) |
| 3 | Y0603310087 | FILTER, ORIFICE (OIL CHAMBER) |
| 3 | Y0155600123 | O-RING (MINIMUM PRESSURE VALVE) |
| 3 | Y0155600132 | O-RING (MINIMUM PRESSURE VALVE) |
| 3 | Y0603043251 | SEAL KIT (INLET VALVE) |
| 5 | .8982402800 | ELEMENT FUEL FILTER (PRE) |
| 5 | .8982402790 | ELEMENT FUEL FILTER (MAIN) |
| 3 | .8981731650 | KIT, FUEL FEED PUMP |
| 5 | .0605505070 | CAP, FUEL TANK |
| 3 | .8980490340 | V-BELT |
| 1 | E2311601203 | RADIATOR HOSE, UPPER |
| 1 | E2311601303 | RADIATOR HOSE, LOWER |
| 4 | .0601810830 | BULB, LAMPS |
| 1 | .0601806642 | FUSE, 5 AMP |
| 3 | .0601806643 | FUSE, 15 AMP |
| 3 | .0601806644 | FUSE, 30 AMP |
| 1 | .0601806640 | FUSE, 65 AMP |
| 3 | .0601824527 | RELAY |
| 3 | .5825500290 | RELAY, BLOWER |
| 2 | EE59644 | IGNITION KEY SET |

NOTICE

Part number on this Suggested Spare Parts list may supersede/replace the P/N shown in the text pages of this book.

AIR END 1 ASSY.

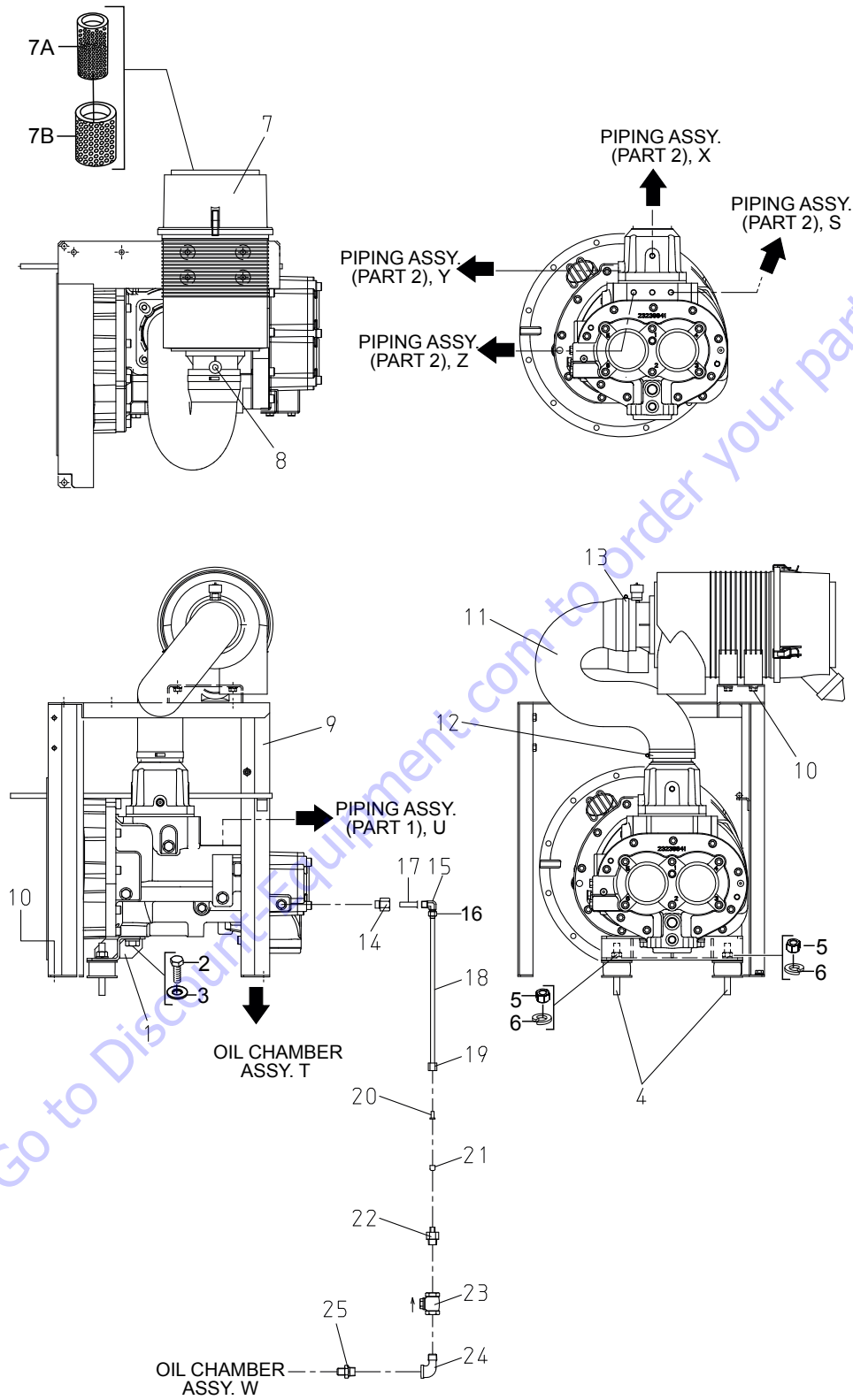


AIR END 1 ASSY.

| <u>NO.</u> | <u>PART NO.</u> | <u>PART NAME</u> | <u>QTY.</u> | <u>REMARKS</u> |
|------------|-----------------|--------------------|-------------|-------------------------|
| 1 | E2924000304 | AIR END ASSY. | 1 | |
| 2 | E2924100394 | COUPLING | 1 | INCLUDES ITEMS W/# |
| 3# | E2924100414 | GEAR HUB | 1 | |
| 4# | E2924100404 | FLANGE | 1 | |
| 5 | Y0013608015 | HEX. HEAD BOLT | 8 | |
| 6 | 0401450080 | WASHER, FLAT | 8 | REPLACES P/N 0041208000 |
| 7 | 0040008000 | WASHER, LOCK | 8 | |
| 8 | E2924100474 | HEX. SOCKET SCREW | 1 | |

Go to Discount-Equipment.com to order your parts

AIR END 2 ASSY.

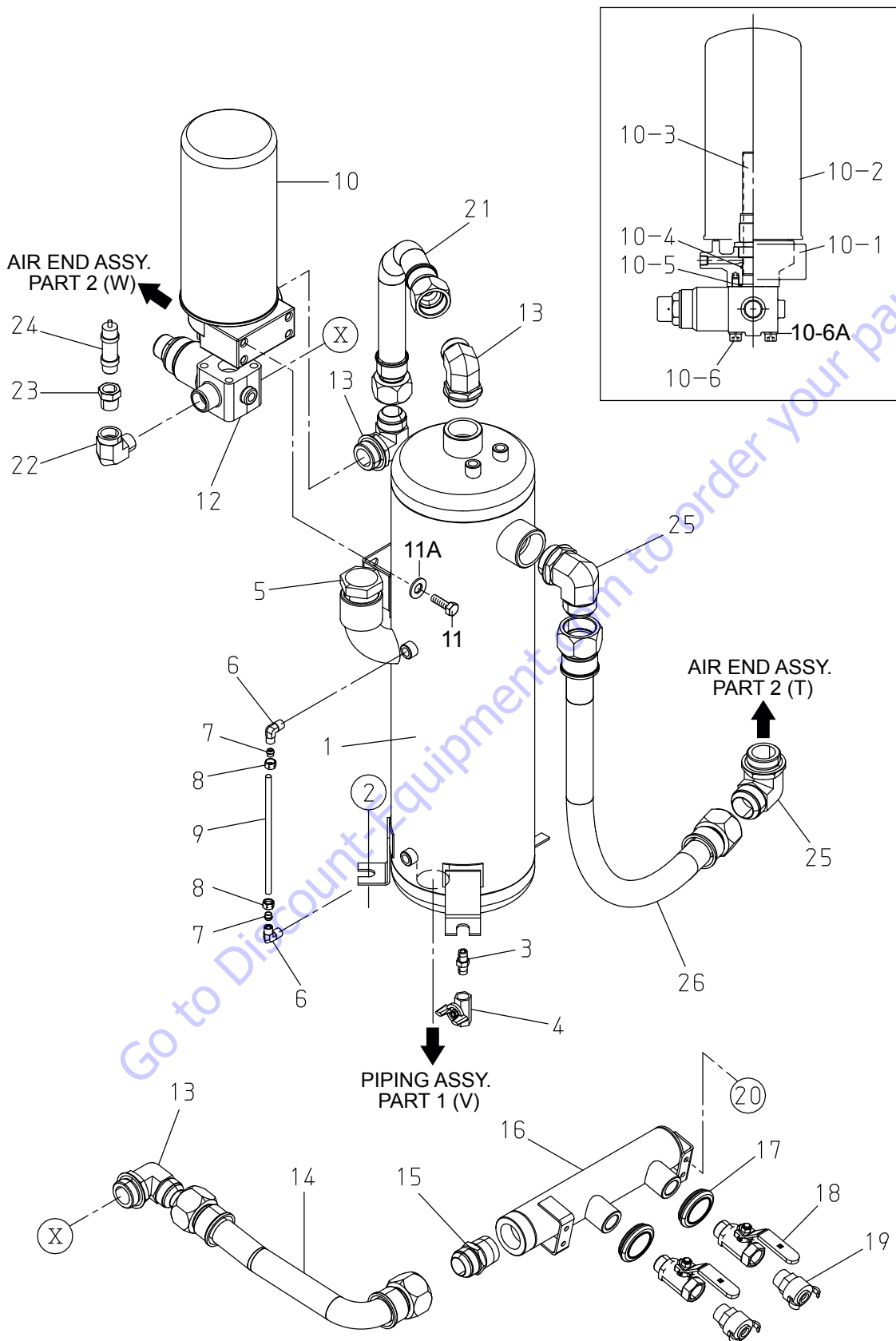


AIR END 2 ASSY.

| <u>NO.</u> | <u>PART NO.</u> | <u>PART NAME</u> | <u>QTY.</u> | <u>REMARKS</u> |
|------------|-----------------|---------------------------|-------------|-------------------------|
| 1 | E2151100604 | AIREND FOOT | 1 | |
| 2 | Y0013616030 | HEX. HEAD BOLT | 2 | |
| 3 | 0041216000 | WASHER, FLAT | 2 | |
| 4 | 0605000068 | RUBBER SUSPENSION | 2 | |
| 5 | 0030012000 | HEX. HEAD NUT | 2 | |
| 6 | 0040012000 | WASHER, LOCK | 2 | |
| 7 | E2924000274 | AIR CLEANER | 1 | |
| 7A | 0602046365 | PRIMARY ELEMENT | 1 | |
| 7B | Y0602046634 | SAFETY ELEMENT | 1 | |
| 8 | 0602040650 | INDICATOR | 1 | |
| 9 | E2141100902 | AIR CLEANER BRACKET | 1 | |
| 10 | 011008020 | HEX. HEAD BOLT..... | 7..... | REPLACES P/N 0016908020 |
| 11 | E2141502003 | COMPRESSOR INTAKE HOSE | 1 | |
| 12 | 0605515146 | HOSE BAND | 1 | |
| 13 | 0605515225 | HOSE BAND | 1 | |
| 14 | E1614800804 | ADAPTOR | 1 | |
| 15 | 0603301032 | ELBOW UNION | 1 | |
| 16 | 0603303010 | NUT..... | 1..... | REPLACES P/N 0603303021 |
| 17 | 0603302001 | SLEEVE..... | 1..... | REPLACES P/N 0603302021 |
| 18 | Y0190400800 | NYLON TUBE | 1 | |
| 19 | 0603303010 | NUT..... | 1..... | REPLACES P/N 0603303001 |
| 20 | 0603304000 | INSERT | 1 | |
| 21 | 0603302001 | SLEEVE | 1 | |
| 22 | Y0603310087 | FILTER | 1 | |
| 23 | 0126004005 | CHECK VALVE..... | 1..... | REPLACES P/N 0120304005 |
| 24 | 0130204000 | STREET ELBOW 3/8" | 1 | |
| 25 | Y0131604020 | REDUCING NIPPLE 3/8"X1/4" | 1 | |

Go to Discount-Equipment.com to order your parts

OIL CHAMBER ASSY.



OIL CHAMBER ASSY.

| <u>NO.</u> | <u>PART NO.</u> | <u>PART NAME</u> | <u>QTY.</u> | <u>REMARKS</u> |
|------------|-----------------|-------------------------------|-------------|-------------------------|
| 1 | E2624001602 | AIR RECEIVER | 1..... | S/N 9500326 AND BELOW |
| 1 | Y0603200380 | AIR RECEIVER | 1..... | S/N 9500327 AND ABOVE |
| 2 | 012212030 | HEX. HEAD BOLT | 3..... | REPLACES P/N 0017112030 |
| 3 | Y0603306384 | PIPE NIPPLE | 1 | |
| 4 | Y0603325037 | MINI BALL VALVE | 1 | |
| 5 | Y0603306761 | O-RING PLUG | 1 | |
| 6 | Y0603301039 | ELBOW UNION | 2 | |
| 7 | 0603302001 | SLEEVE | 2..... | REPLACES P/N 0603302021 |
| 8 | 0603303010 | NUT..... | 2..... | REPLACES P/N 0603303021 |
| 9 | 0190400350 | NYLON TUBE | 1 | |
| 10 | E2621001403 | AIR SEPARATOR ASSY. | 1 | |
| 10-1 | E2624200202 | ELEMENT BASE | 1 | |
| 10-2 | E2924000214 | AIR OIL SEPARATOR BOX | 1 | |
| 10-3 | E2924000224 | NIPPLE VST | 1 | |
| 10-4 | Y0155500123 | O-RING | 1 | |
| 10-5 | Y0155500218 | O-RING | 1 | |
| 10-6 | Y0018210080 | HEX. SOCKET HEAD CAP SCREW | 4 | |
| 10-6A | 0040010000 | WASHER, LOCK | 4 | |
| 11 | 0016910025 | HEX. HEAD BOLT | 4 | |
| 11A | 0042810000 | LARGE WASHER, FLAT | 4 | |
| 12 | E2631001403 | MINIMUM PRESSURE VALVE | 1 | |
| 13 | Y0603306462 | STRAIGHT THREAD ELBOW | 3 | |
| 14 | E2604203304 | AIR HOSE | 1 | |
| 15 | Y0603306392 | MALE CONNECTOR | 1 | |
| 16 | E2607104403 | AIR MANIFOLD | 1 | |
| 17 | Y0601851774 | GROMMET | 2 | |
| 18 | Y0603325034 | BALL VALVE | 2 | |
| 19 | Y0603314110 | UNIVERSAL FITTING | 2 | |
| 20 | 0019208020 | HEX. HEAD BOLT | 4 | |
| 21 | E2604203204 | AIR HOSE | 1 | |
| 22 | Y0603306236 | STREET ELBOW 3/4" | 1 | |
| 23 | Y0603306888 | PIPE THREAD REDUCER 3/4"X1/2" | 1 | |
| 24 | E2924000234 | SAFETY AND RELIEF VALVE | 1 | |
| 25 | Y0603006463 | STRAIGHT THREAD ELBOW | 2 | |
| 26 | E2604203104 | DISCHARGE HOSE | 1 | |

PARTS FINDER

**Search Website
by Part Number**



**Search Manual
Library For Parts
Manual & Lookup Part
Numbers – Purchase
or Request Quote**

Search Manuals

Enter the brand and model of your equipment to search our manual library for parts.

* Brand:

* Model:

* Serial:

* Part Number:

**Can't Find Part or
Manual? Request Help
by Manufacturer,
Model & Description**

Parts Order Form

Please fill in the following information to request help finding a part or manual.

| | |
|--------------|----------------------|
| Brand: | <input type="text"/> |
| Model: | <input type="text"/> |
| Serial: | <input type="text"/> |
| Part Number: | <input type="text"/> |
| Description: | <input type="text"/> |
| Quantity: | <input type="text"/> |
| Notes: | <input type="text"/> |

Discount-Equipment.com is your online resource for quality parts & equipment.

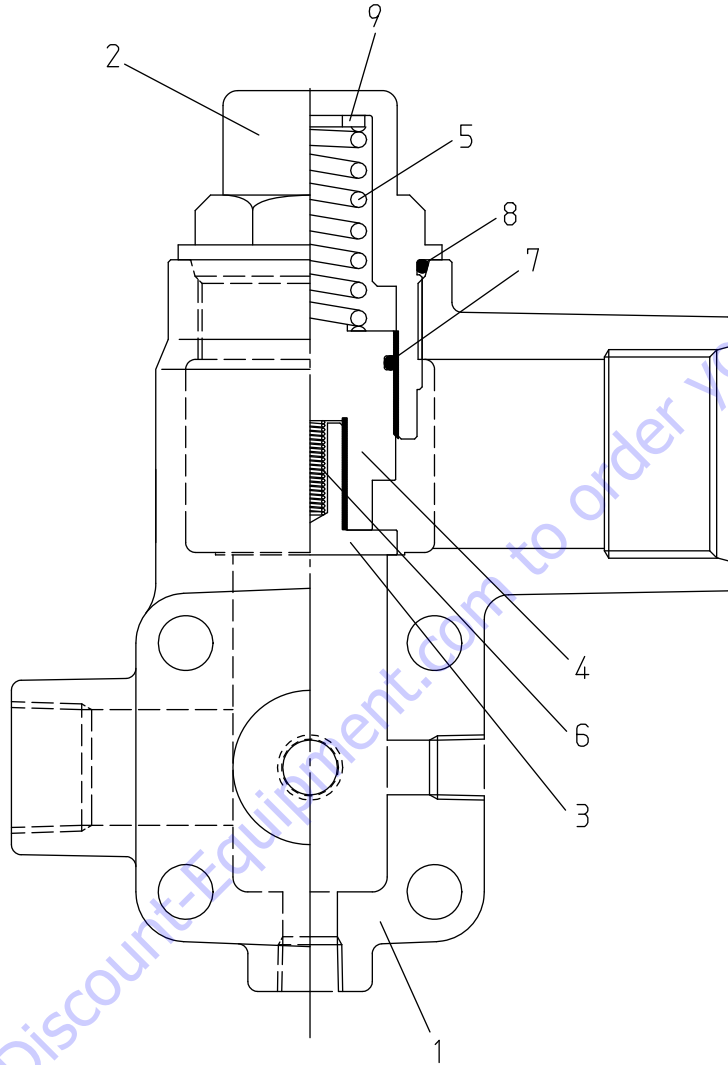
Florida: **561-964-4949** Outside Florida TOLL FREE: **877-690-3101**

Need parts?

Click on this link: <http://www.discount-equipment.com/category/5443-parts/> and choose one of the options to help get the right parts and equipment you are looking for. Please have the machine model and serial number available in order to help us get you the correct parts. If you don't find the part on the website or on one of the online manuals, please fill out the request form and one of our experienced staff members will get back to you with a quote for the right part that your machine needs.

We sell worldwide for the brands: Genie, Terex, JLG, MultiQuip, Mikasa, Essick, Whiteman, Mayco, Toro Stone, Diamond Products, Generac Magnum, Airman, Haulotte, Barreto, Power Blanket, Nifty Lift, Atlas Copco, Chicago Pneumatic, Allmand, Miller Curber, Skyjack, Lull, Skytrak, Tsurumi, Husquvarna Target, , Stow, Wacker, Sakai, Mi-T- M, Sullair, Basic, Dynapac, MBW, Weber, Bartell, Bennar Newman, Haulotte, Ditch Runner, Menegotti, Morrison, Contec, Buddy, Crown, Edco, Wyco, Bomag, Laymor, Barreto, EZ Trench, Bil-Jax, F.S. Curtis, Gehl Pavers, Heli, Honda, ICS/PowerGrit, IHI, Partner, Imer, Clipper, MMD, Koshin, Rice, CH&E, General Equipment, ,AMida, Coleman, NAC, Gradall, Square Shooter, Kent, Stanley, Tamco, Toku, Hatz, Kohler, Robin, Wisconsin, Northrock, Oztec, Toker TK, Rol-Air, Small Line, Wanco, Yanmar

MINIMUM PRESSURE VALVE ASSY.

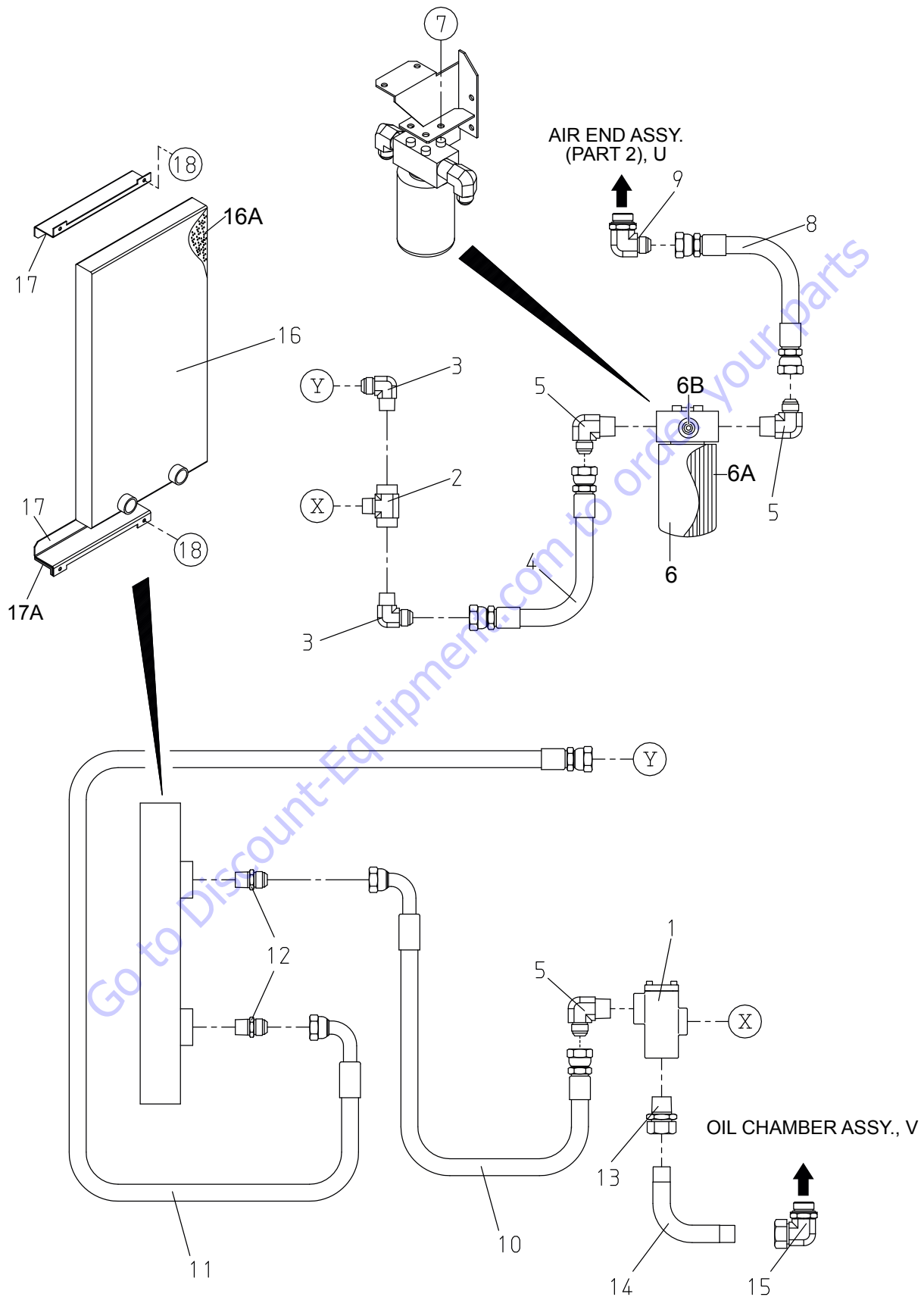


MINIMUM PRESSURE VALVE ASSY.

| <u>NO.</u> | <u>PART NO.</u> | <u>PART NAME</u> | <u>QTY.</u> | <u>REMARKS</u> |
|------------|-----------------|-----------------------------|-------------|----------------|
| 1 | E2624200302 | MINIMUM PRESSURE VALVE BODY | 1 | |
| 2 | E2631001304 | COVER | 1 | |
| 3 | E2631001204 | VALVE | 1 | |
| 4 | E2631001104 | PISTON | 1 | |
| 5 | E9201300004 | SPRING | 1 | |
| 6 | E9201300104 | SPRING | 1 | |
| 7 | Y0155600123 | O-RING | 1 | |
| 8 | Y0155500132 | O-RING | 1 | |
| 9 | 0040012000 | WASHER, FLAT | 1 | |

Go to Discount-Equipment.com to order your parts

PIPING 1 ASSY.

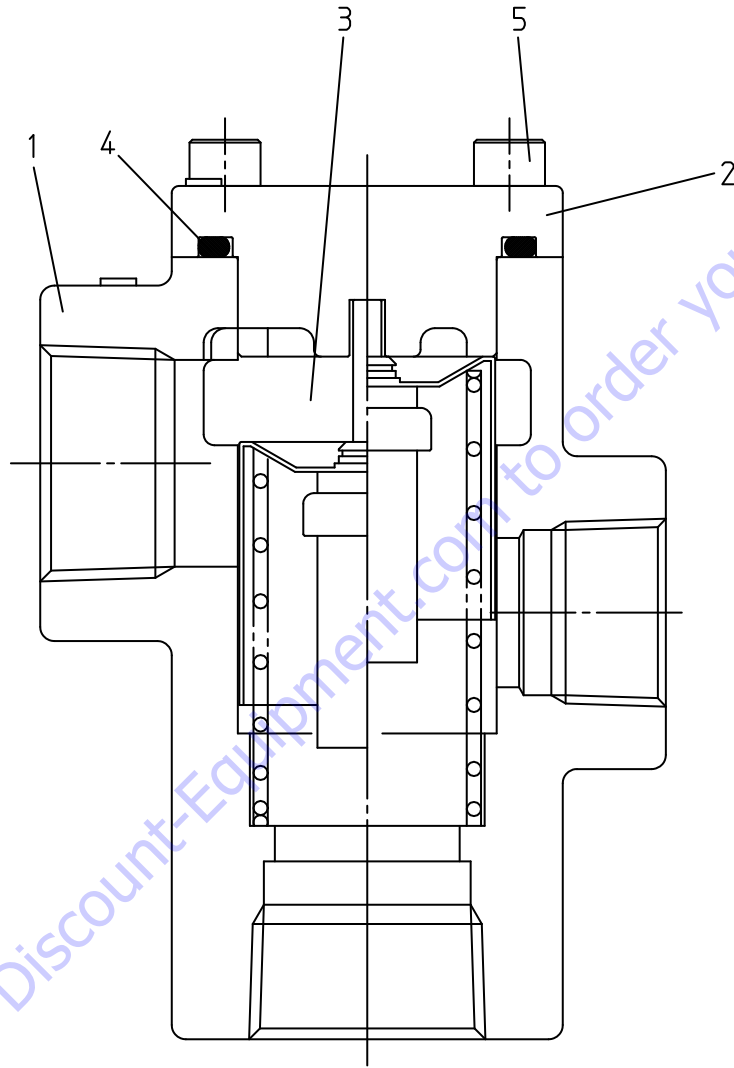


PIPING 1 ASSY.

| <u>NO.</u> | <u>PART NO.</u> | <u>PART NAME</u> | <u>QTY.</u> | <u>REMARKS</u> |
|------------|-----------------|---------------------------|-------------|-------------------------|
| 1 | E2624800603 | BYPASS THERMO VALVE ASSY. | 1 | |
| 2 | Y0603306689 | MALE BRANCH TEE | 1 | |
| 3 | Y0603306464 | MALE ELBOW | 2 | |
| 4 | E2604203604 | OIL HOSE | 1 | |
| 5 | Y0603306465 | MALE ELBOW | 3 | |
| 6 | E2924000344 | OIL FILTER | 1 | |
| 6A | E2924000354 | OIL FILTER ELEMENT | 1 | |
| 6B | Y0603310240 | SENSOR | 1 | |
| 7 | 0016910020 | HEX. HEAD BOLT | 3 | |
| 8 | E2604203704 | OIL HOSE | 1 | |
| 9 | Y0603306469 | STRAIGHT THREAD ELBOW | 1 | |
| 10 | E2604203404 | OIL HOSE | 1 | |
| 11 | E2604203504 | OIL HOSE | 1 | |
| 12 | Y0603306382 | MALE CONNECTOR | 2 | |
| 13 | Y0603320048 | MALE CONNECTOR | 1 | |
| 14 | E2604203804 | OIL PIPE | 1 | |
| 15 | Y0603320059 | ADJUSTABLE LOCKNUT ELBOW | 1 | |
| 16 | E2924200374 | OIL COOLER | 1 | |
| 16A | E2494205604 | ACOUSTIC SHEET | 1 | |
| 17 | E2314101404 | OIL COOLER BRACKET | 2 | |
| 17A | Y0228900300 | SEAL, RUBBER | 2 | |
| 18 | 011008020 | HEX. HEAD BOLT..... | 4..... | REPLACES P/N 0016908020 |

Go to Discount-Equipment.com to order your parts

BYPASS THERMO VALVE ASSY.

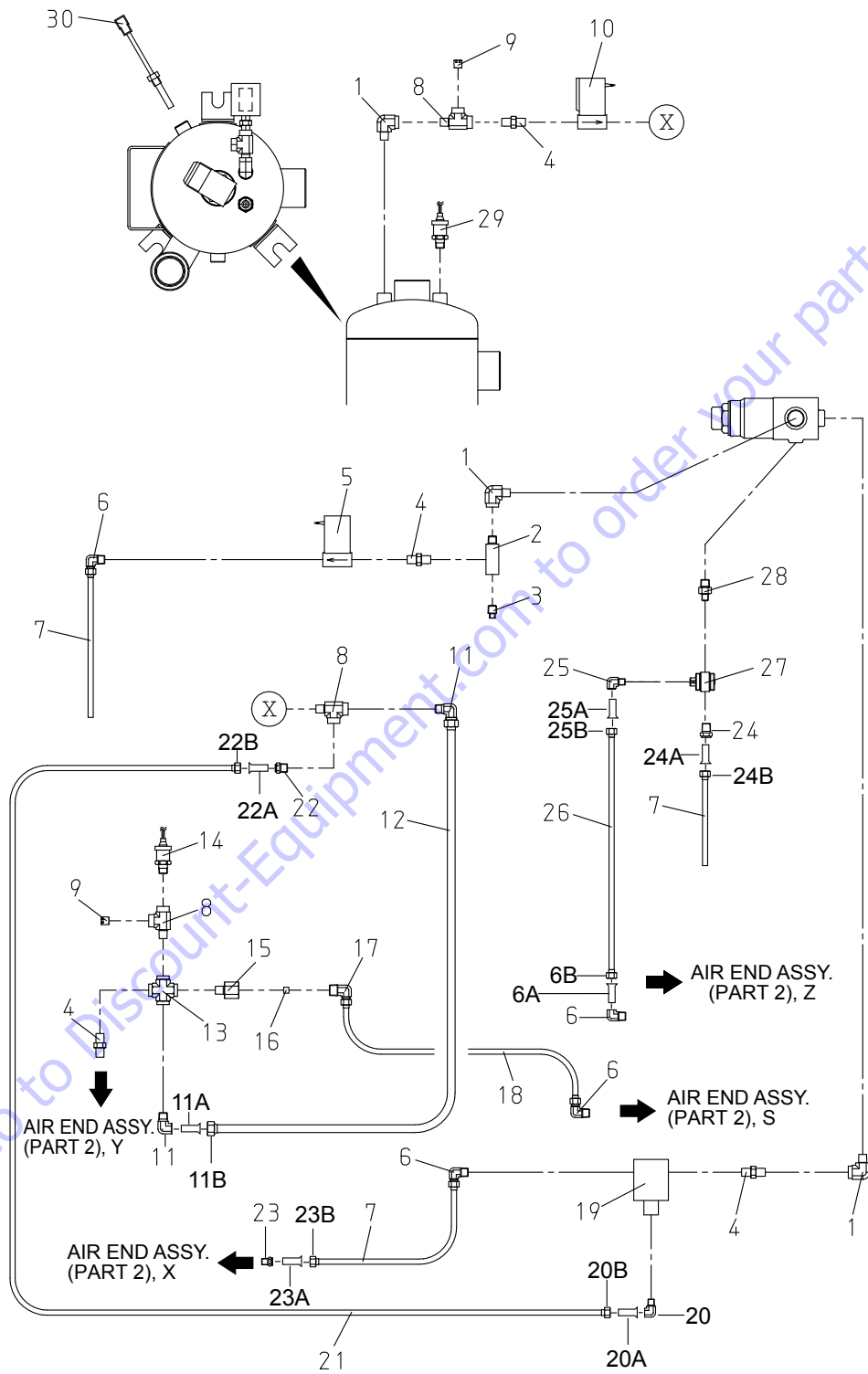


BYPASS THERMO VALVE ASSY.

| <u>NO.</u> | <u>PART NO.</u> | <u>PART NAME</u> | <u>QTY.</u> | <u>REMARKS</u> |
|------------|-----------------|---------------------------------|-------------|----------------|
| 1 | E2624800403 | BYPASS THERMO VALVE BODY | 1 | |
| 2 | E2624800504 | COVER | 1 | |
| 3 | E2924100384 | COMPRESSOR OIL THERMOSTAT ASSY. | 1 | |
| 4 | Y0155500223 | O-RING | 1 | |
| 5 | Y0018206020 | HEX. SOCKET HEAD CAP SCREW | 4 | |

Go to Discount-Equipment.com to order your parts

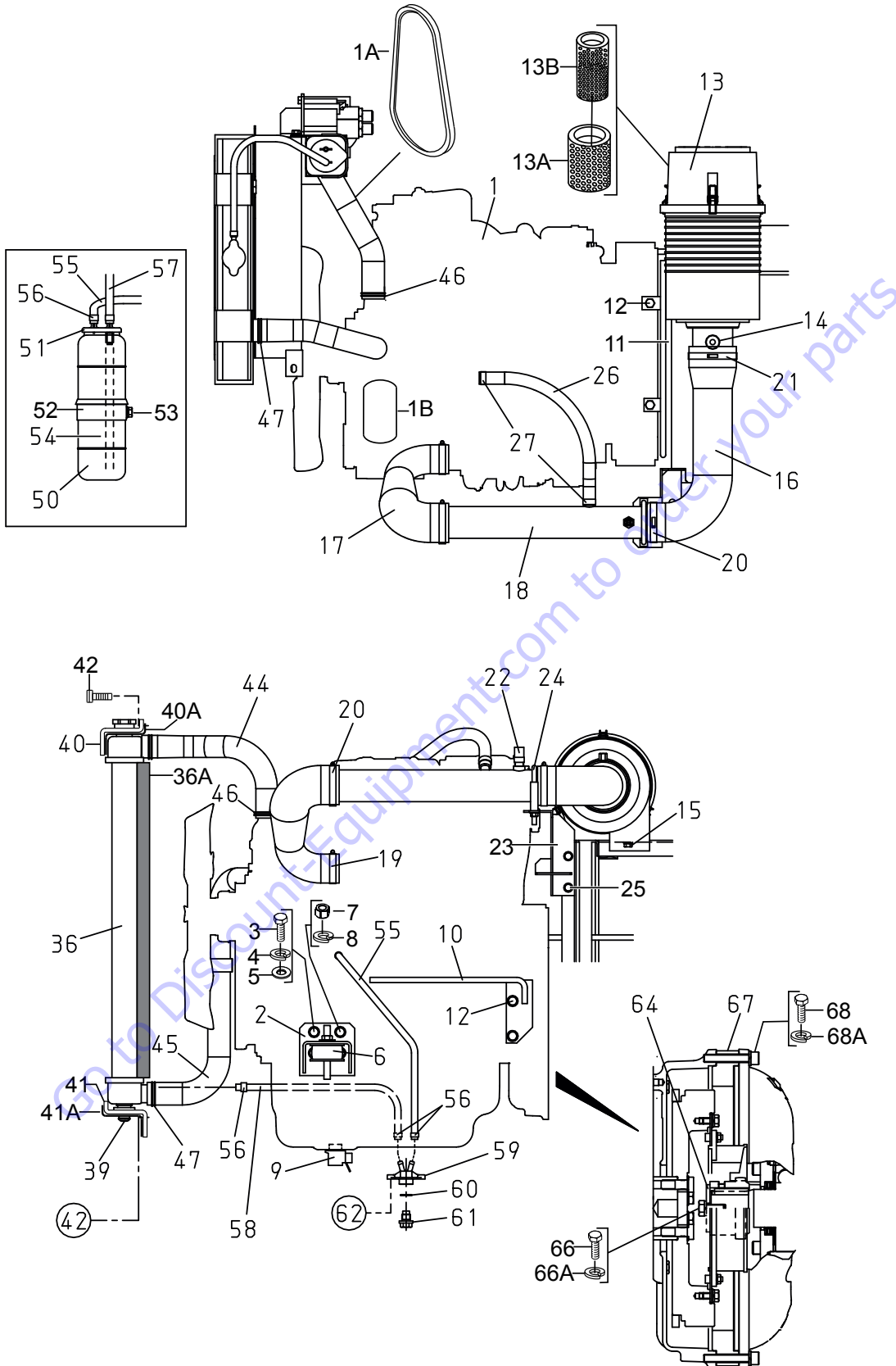
PIPING 2 ASSY.



PIPING 2 ASSY.

| <u>NO.</u> | <u>PART NO.</u> | <u>PART NAME</u> | <u>QTY.</u> | <u>REMARKS</u> |
|------------|-----------------|-----------------------------|-------------|-------------------------|
| 1 | Y0603306237 | STREET ELBOW | 3 | |
| 2 | E2614803404 | ADAPTER | 1 | |
| 3 | 0138102000 | PLUG | 1 | |
| 4 | Y0603306383 | NIPPLE | 4 | |
| 5 | E2221800204 | SOLENOID VALVE ASSY. | 1 | |
| 6 | Y0603301039 | ELBOW UNION | 4 | |
| 6A | 0603302001 | SLEEVE | 4 | REPLACES P/N 0603302021 |
| 6B | 0603303010 | NUT..... | 4 | REPLACES P/N 0603303021 |
| 7 | Y0190700580 | NYLON TUBE | 3 | |
| 8 | Y0603306687 | MALE RUN TEE | 3 | |
| 9 | Y0603306709 | HOLLOW HEX. PIPE PLUG | 2 | |
| 10 | E2924100374 | PROPORTIONAL SOLENOID VALVE | 1 | |
| 11 | Y0603301044 | ELBOW UNION | 2 | |
| 11A | Y0603302022 | SLEEVE | 2 | |
| 11B | Y0603303022 | NUT | 2 | |
| 12 | Y0190800550 | NYLON TUBE | 1 | |
| 13 | Y0603307211 | FEMALE PIPE CROSS | 1 | |
| 14 | E2221800104 | PRESSURE SENSOR ASSY. (P2) | 1 | |
| 15 | Y0603306553 | EXPANDER ADAPTOR | 1 | |
| 16 | E2614803604 | ORIFICE PLUG | 1 | |
| 17 | E2614803504 | MOD. ELBOW CONNECTOR | 1 | |
| 18 | Y0190700400 | NYLON TUBE | 1 | |
| 19 | E2924100004 | BYPASS VALVE | 1 | |
| 20 | Y0603301038 | ELBOW UNION | 1 | |
| 20A | 0603302001 | SLEEVE | 1 | REPLACES P/N 0603302021 |
| 20B | 0603303010 | NUT..... | 1 | REPLACES P/N 0603303021 |
| 21 | Y0190700650 | NYLON TUBE | 1 | |
| 22 | Y0603300049 | HALF UNION | 1 | |
| 22A | 0603302001 | SLEEVE | 1 | REPLACES P/N 0603302021 |
| 22B | 0603303010 | NUT..... | 1 | REPLACES P/N 0603303021 |
| 23 | Y0603300048 | HALF UNION | 1 | |
| 23A | 0603302001 | SLEEVE | 1 | REPLACES P/N 0603302021 |
| 23B | 0603303010 | NUT..... | 1 | REPLACES P/N 0603303021 |
| 24 | Y0603300041 | HALF UNION | 1 | |
| 24A | 0603302001 | SLEEVE | 1 | REPLACES P/N 0603302021 |
| 24B | 0603303010 | NUT..... | 1 | REPLACES P/N 0603303021 |
| 25 | Y0603301031 | ELBOW UNION | 1 | |
| 25A | 0603302001 | SLEEVE | 1 | REPLACES P/N 0603302021 |
| 25B | 0603303010 | NUT..... | 1 | REPLACES P/N 0603303021 |
| 26 | Y0190700560 | NYLON TUBE | 1 | |
| 27 | Y0603324283 | PILOT VALVE | 1 | |
| 28 | Y0131602000 | REDUCING NIPPLE | 1 | |
| 29 | E2221800004 | PRESSURE SENSOR ASSY. (P1) | 1 | |
| 30 | Y0603210230 | TEMPERATURE SENSOR | 1 | |

ENGINE AND RADIATOR 1 ASSY.



PARTS FINDER

**Search Website
by Part Number**



**Search Manual
Library For Parts
Manual & Lookup Part
Numbers – Purchase
or Request Quote**

**Can't Find Part or
Manual? Request Help
by Manufacturer,
Model & Description**

Discount-Equipment.com is your online resource for quality parts & equipment.

Florida: **561-964-4949** Outside Florida TOLL FREE: **877-690-3101**

Need parts?

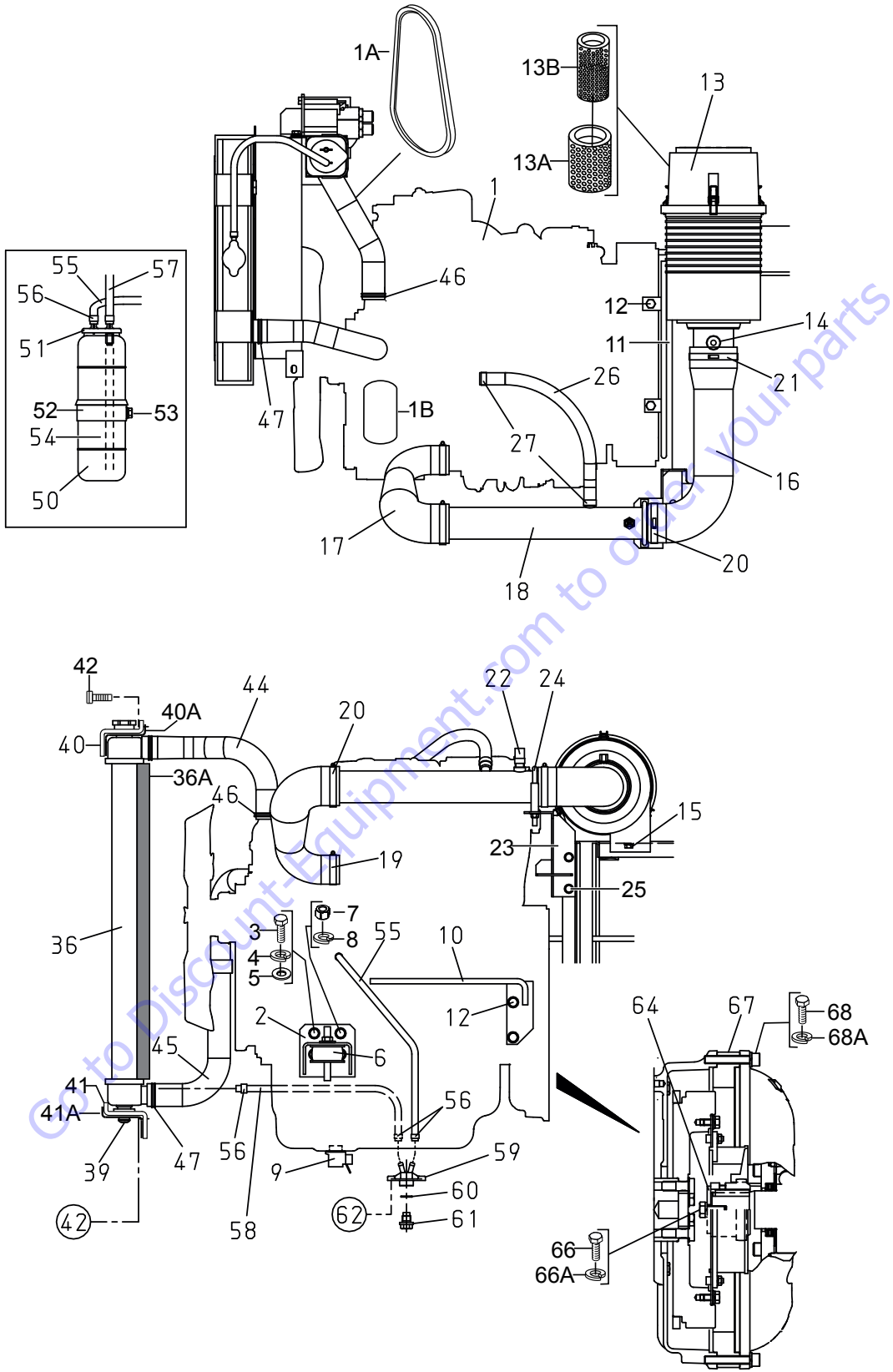
Click on this link: <http://www.discount-equipment.com/category/5443-parts/> and choose one of the options to help get the right parts and equipment you are looking for. Please have the machine model and serial number available in order to help us get you the correct parts. If you don't find the part on the website or on one of the online manuals, please fill out the request form and one of our experienced staff members will get back to you with a quote for the right part that your machine needs.

We sell worldwide for the brands: Genie, Terex, JLG, MultiQuip, Mikasa, Essick, Whiteman, Mayco, Toro Stone, Diamond Products, Generac Magnum, Airman, Haulotte, Barreto, Power Blanket, Nifty Lift, Atlas Copco, Chicago Pneumatic, Allmand, Miller Curber, Skyjack, Lull, Skytrak, Tsurumi, Husquvarna Target, , Stow, Wacker, Sakai, Mi-T- M, Sullair, Basic, Dynapac, MBW, Weber, Bartell, Bennar Newman, Haulotte, Ditch Runner, Menegotti, Morrison, Contec, Buddy, Crown, Edco, Wyco, Bomag, Laymor, Barreto, EZ Trench, Bil-Jax, F.S. Curtis, Gehl Pavers, Heli, Honda, ICS/PowerGrit, IHI, Partner, Imer, Clipper, MMD, Koshin, Rice, CH&E, General Equipment, ,AMida, Coleman, NAC, Gradall, Square Shooter, Kent, Stanley, Tamco, Toku, Hatz, Kohler, Robin, Wisconsin, Northrock, Oztec, Toker TK, Rol-Air, Small Line, Wanco, Yanmar

ENGINE AND RADIATOR 1 ASSY.

| NO. | PART NO. | PART NAME | QTY. | REMARKS ¹ |
|-----|-------------|------------------------------------|------|--------------------------|
| 1 | E2924200384 | ENGINE, ISUZU 4LE2T | 1 | |
| 1A | 8980490340 | FAN BELT | 1 | |
| 1B | 8980756761 | CARTRIDGE, OIL FILTER | 1 | |
| 2 | E2304202204 | ENGINE FOOT | 2 | |
| 3 | 0105091025 | HEX. HEAD BOLT | 8 | REPLACES P/N 0010310025 |
| 4 | 0040010000 | WASHER, LOCK | 8 | |
| 5 | 031110160 | WASHER, FLAT | 8 | REPLACES P/N 0041210000 |
| 6 | 0605000008 | RUBBER SUSPENSION | 2 | |
| 7 | 0030012000 | HEX. NUT | 2 | |
| 8 | 0040012000 | WASHER, LOCK | 2 | |
| 9 | Y0605511361 | OIL CHANGER | 1 | |
| 10 | E2355300404 | CLAMPER ROD | 1 | |
| 11 | E2355300504 | CLAMPER ROD | 1 | |
| 12 | 012010030 | HEX. HEAD BOLT | 4 | REPLACES P/N 0017110030 |
| 13 | E2924200364 | AIR CLEANER | 1 | |
| 13A | 0602046366 | PRIMARY ELEMENT | 1 | |
| 13B | Y0602046615 | SAFETY ELEMENT | 1 | |
| 14 | 0602040679 | INDICATOR | 1 | |
| 15 | 011008020 | HEX. HEAD BOLT | 2 | REPLACES P/N 0016908020 |
| 16 | E2374102503 | AIR CLEANER HOSE | 1 | |
| 17 | E2374102403 | AIR CLEANER HOSE | 1 | |
| 18 | E2374000603 | AIR CLEANER PIPE | 1 | |
| 19 | 0605515147 | HOSE BAND | 1 | |
| 20 | Y0605515178 | HOSE BAND | 2 | |
| 21 | Y0605515146 | HOSE BAND | 1 | |
| 22 | 8121468300 | INLET AIR TEMPERATURE SENSOR | 1 | REPLACES P/N 0603210240 |
| 23 | E2374300003 | PIPE BRACKET | 1 | |
| 24 | 0602326063 | U-BOLT | 1 | |
| 25 | 011008020 | HEX. HEAD BOLT | 2 | REPLACES P/N 0016908020 |
| 26 | 0269200400 | PUSH-LOCK-HOSE | 1 | |
| 27 | 0605515198 | HOSE BAND | 2 | |
| 36 | E2924100324 | RADIATOR | 1 | |
| 36A | E2494205604 | ACOUSTIC SHEET | 1 | |
| 39 | M9312200104 | MOUNT RUBBER | 2 | |
| 40 | E2311200504 | RADIATOR BRACKET | 1 | |
| 40A | 0222100320 | SEAL RUBBER | 1 | |
| 41 | E2311200604 | RADIATOR BRACKET | 1 | |
| 41A | Y0222100390 | SEAL RUBBER | 1 | |
| 42 | 011008020 | HEX. HEAD BOLT | 5 | REPLACES P/N 0016908020 |
| 44 | E2311601203 | RADIATOR HOSE, UPPER | 1 | |
| 45 | E2311601303 | RADIATOR HOSE, LOWER | 1 | |
| 46 | 0605515149 | HOSE BAND | 2 | |
| 47 | 0605515147 | HOSE BAND | 2 | |
| 50 | 0802081403D | RESERVE TANK..... | 1 | REPLACES P/N M9300000003 |

ENGINE AND RADIATOR 1 ASSY. (CONTINUED)

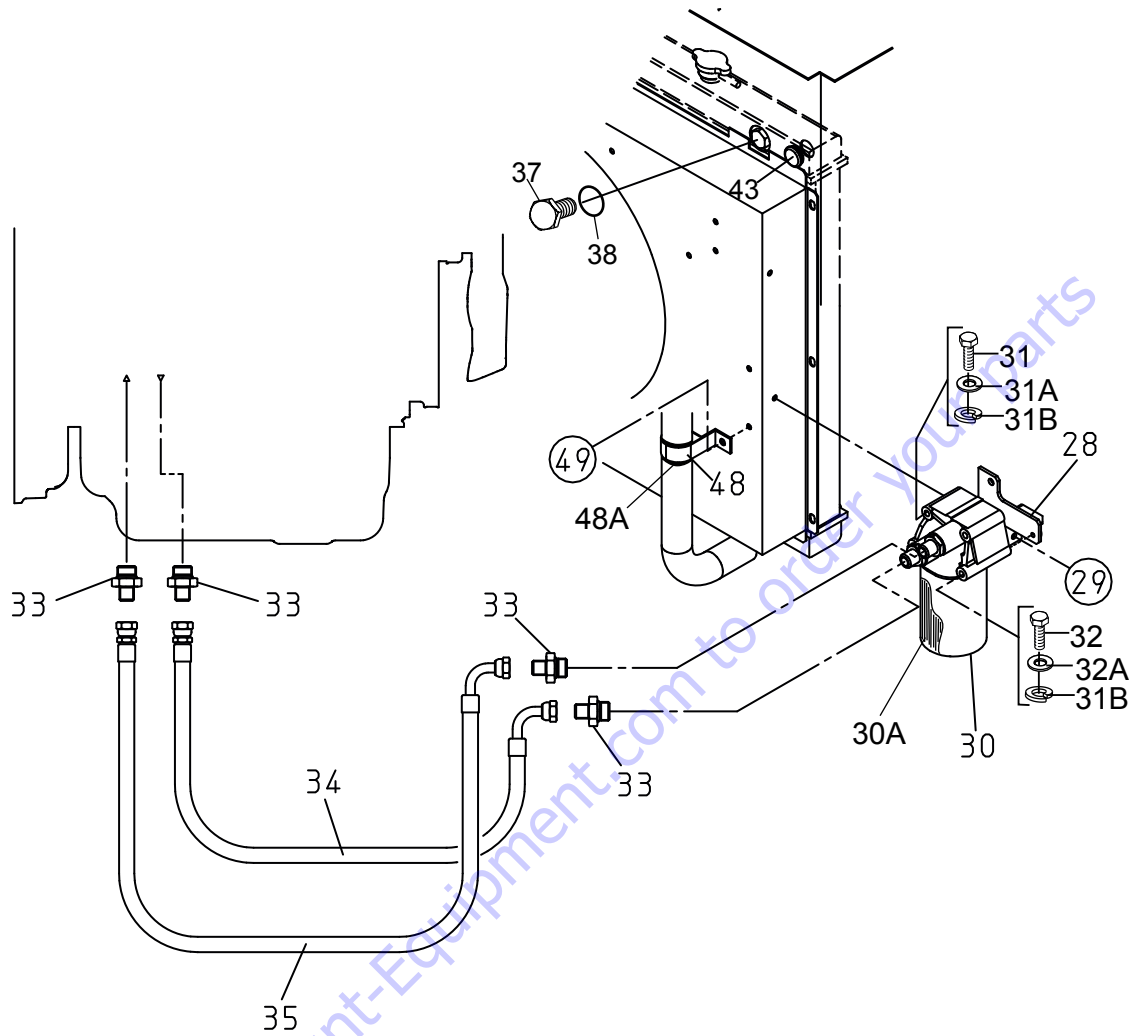


ENGINE AND RADIATOR 1 ASSY. (CONTINUED)

| <u>NO.</u> | <u>PART NO.</u> | <u>PART NAME</u> | <u>QTY.</u> | <u>REMARKS</u> |
|------------|-----------------|----------------------------|-------------|--------------------------|
| 51 | 0802081104 | CAP, RESERVE TANK | 1..... | REPLACES P/N M9300100003 |
| 52 | M1317100004 | BRACKET, RESERVE TANK | 1 | |
| 53 | 011008020 | HEX. HEAD BOLT | 1..... | REPLACES P/N 0016908020 |
| 54 | 0199100215 | HOSE | 1 | |
| 55 | 0199900500 | OVER FLOW HOSE | 2 | |
| 56 | 0605515189 | HOSE BAND | 6 | |
| 57 | 0193601000 | OVER FLOW HOSE | 1 | |
| 58 | Y0199901300 | DRAIN HOSE | 1 | |
| 59 | 1622014103 | DRAIN JOINT | 1..... | REPLACES P/N M9602000003 |
| 60 | 0150000018 | O-RING | 1 | |
| 61 | 0802011104 | DRAIN BOLT | 1..... | REPLACES P/N M9200200004 |
| 62 | 011206020 | HEX. HEAD BOLT | 2..... | REPLACES P/N 0019206020 |
| 64 | 6141656004 | PLATE | 1 | |
| 66 | Y0013612025 | HEX. HEAD BOLT | 1 | |
| 66A | 0040012000 | WASHER, LOCK | 1 | |
| 67 | E2164600303 | COUPLING ADAPTOR | 1 | |
| 68 | Y0015310060 | HEX. SOCKET HEAD CAP SCREW | 10 | |
| 68A | 0040010000 | WASHER, LOCK | 10 | |

Go to Discount-Equipment.com to order your parts

ENGINE AND RADIATOR 2 ASSY.

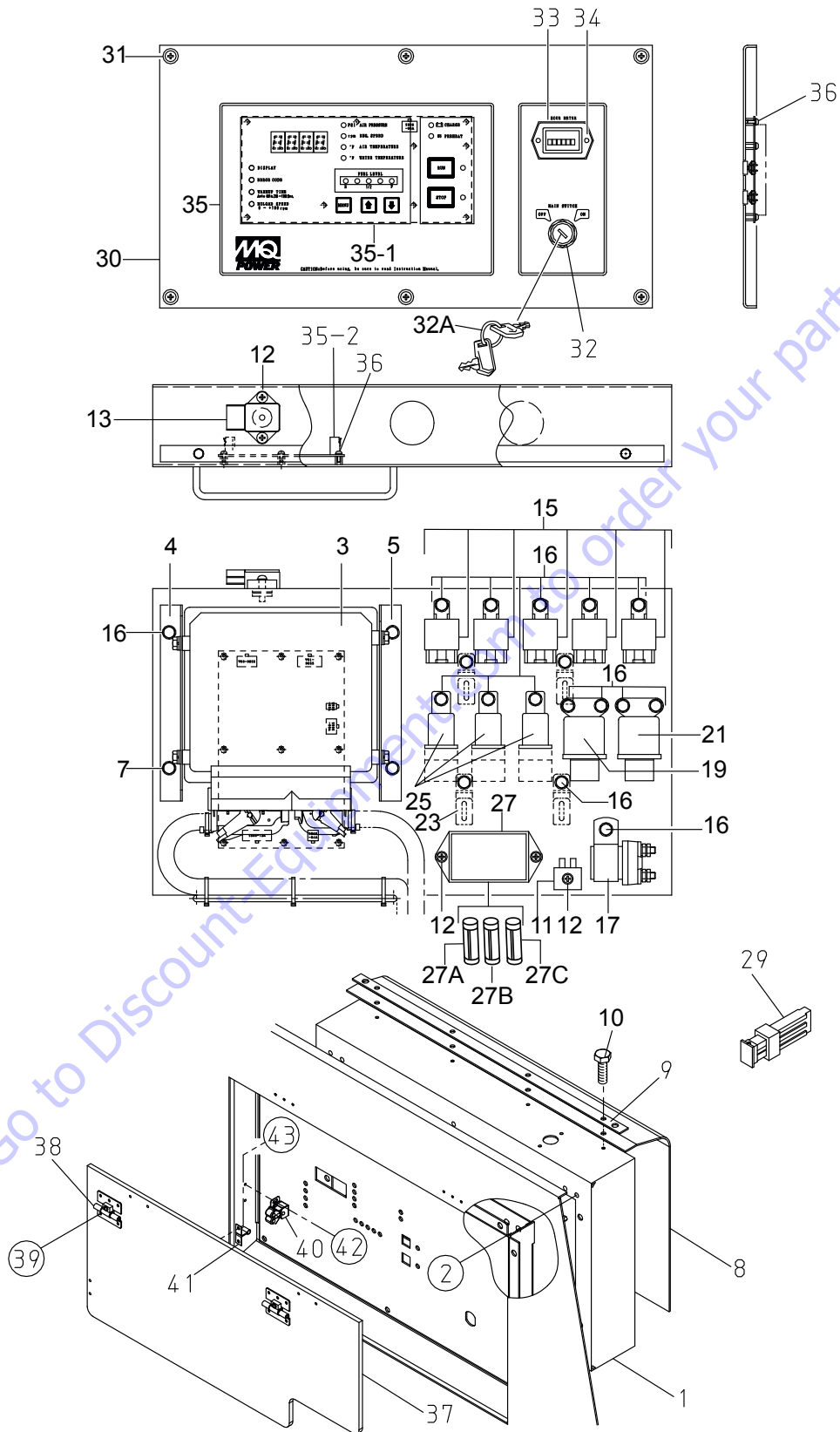


ENGINE AND RADIATOR 2 ASSY.

| <u>NO.</u> | <u>PART NO.</u> | <u>PART NAME</u> | <u>QTY.</u> | <u>REMARKS1</u> |
|------------|-----------------|----------------------------|-------------|--------------------------|
| 28 | E2324400804 | OIL FILTER BRACKET | 1 | |
| 29 | 011008020 | HEX. HEAD BOLT | 2..... | REPLACES P/N 0016908020 |
| 30 | 8980756710 | OIL FILTER | 1..... | REPLACES P/N 2944566410 |
| 30A | 8980756761 | OIL FILTER CARTRIDGE | 1..... | REPLACES P/N Y0602041226 |
| 31 | Y0010108090 | HEX. HEAD BOLT | 1 | |
| 31A | 0401450080 | WASHER, FLAT | 1..... | REPLACES P/N 0041208000 |
| 31B | 0040008000 | WASHER, LOCK | 1 | |
| 32 | Y0010108110 | HEX. HEAD BOLT | 2 | |
| 32A | 0401450080 | WASHER, FLAT | 2..... | REPLACES P/N 0041208000 |
| 32B | 0040008000 | WASHER, LOCK | 2 | |
| 33 | Y0602022534 | STRAIGHT ADAPTER | 4 | |
| 34 | E2324300004 | OIL HOSE | 1 | |
| 35 | E2324300104 | OIL HOSE | 1 | |
| 37 | M9200100904 | PLUG | 1 | |
| 38 | 0150000016 | O-RING | 1 | |
| 43 | Y0601850264 | GROMMET | 1 | |
| 48 | E2311700204 | HOSE CLAMPER | 1 | |
| 48A | Y0229200150 | SEAL RUBBER | 1 | |
| 49 | 011008020 | HEX. HEAD BOLT | 1..... | REPLACES P/N 0016908020 |

Go to Discount-Equipment.com to order your parts

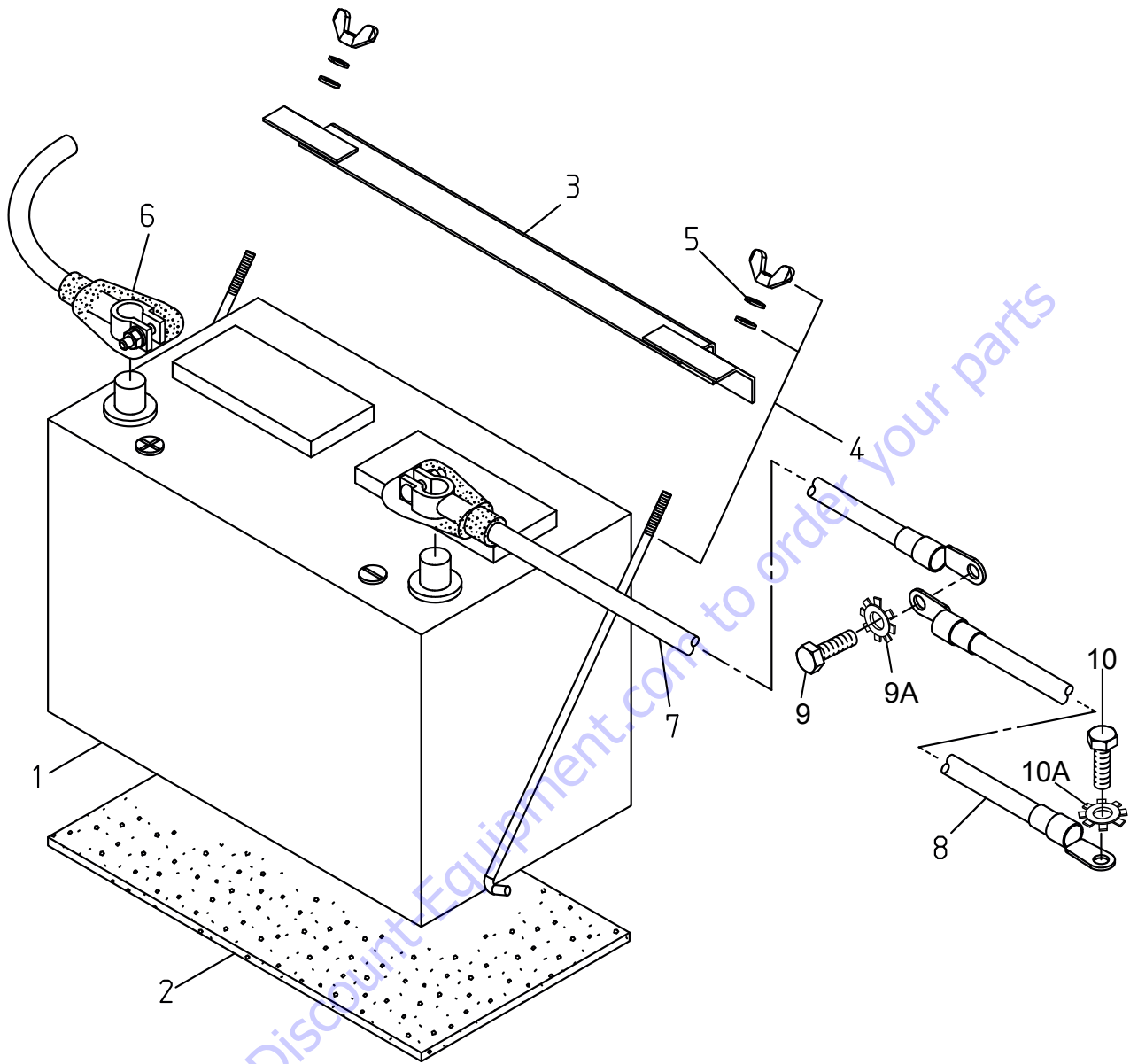
CONTROL BOX ASSY.



CONTROL BOX ASSY.

| <u>NO.</u> | <u>PART NO.</u> | <u>PART NAME</u> | <u>QTY.</u> | <u>REMARKS</u> |
|------------|-----------------|---------------------------------|-------------|--------------------------|
| 1 | E2352602303 | CONTROL BOX | 1 | |
| 2 | 0016906015 | HEX. HEAD BOLT | 4 | |
| 3 | 8982772271 | ENGINE CONTROL UNIT | 1 | REPLACES P/N Y0602202694 |
| 4 | E2352900904 | CONTROLLER BRACKET | 1 | |
| 5 | E2352901004 | CONTROLLER BRACKET | 1 | |
| 7 | Y0016906010 | HEX. HEAD BOLT | 4 | |
| 8 | E2352701404 | INSULATING SHEET | 1 | |
| 9 | E2352901104 | INSULATING SHEET BRACKET | 1 | |
| 10 | 0017105015 | HEX. HEAD BOLT | 4 | |
| 11 | 0601821370 | RECTIFIER..... | 1 | REPLACES P/N 0601823240 |
| 12 | 0027105020 | MACHINE SCREW | 5 | |
| 13 | 8972177780 | BAROMETRIC PRESSURE SENSOR..... | 1 | REPLACES P/N 0602130220 |
| 15 | 0601824527 | RELAY | 5 | |
| 16 | 0016906015 | HEX. HEAD BOLT | 21 | |
| 17 | Y0601830171 | MAGNET SWITCH | 1 | |
| 19 | 8944001061 | RELAY, STARTER..... | 1 | REPLACES P/N 8942481610 |
| 21 | 8970119490 | GLOW PLUG RELAY..... | 1 | REPLACES P/N 602202685 |
| 23 | 0602220911 | COATING CLAMPER..... | 4 | REPLACES P/N 0602220910 |
| 25 | 5825500290 | RELAY | 3 | REPLACES P/N 0602201400 |
| 27 | E4352900904 | FUSE BOX | 1 | |
| 27A | 0601806642 | FUSE, 5A | 3 | |
| 27B | 0601806643 | FUSE, 15A | 3 | |
| 27C | 0601806644 | FUSE, 30A | 2 | |
| 27D | E9524000004 | DECAL; FUSE BOX | 1 | |
| 29 | 0601806640 | FUSE, 65A | 1 | |
| 30 | E2352101203 | CONTROL PANEL | 1 | |
| 31 | 0021506030 | MACHINE SCREW | 6 | REPLACES P/N 0021806030 |
| 32 | Y0602100320 | KEY SWITCH SET | 1 | |
| 32A | EE59644 | IGNITION KEY | 1 | |
| 33 | 0601800682 | HOUR METER | 1 | |
| 34 | 0027103015 | MACHINE SCREW | 2 | |
| 34A | 0207003000 | SELF-LOCKING NUT | 2 | |
| 35 | E2924100434 | CONTROLLER ASSY. | 1 | |
| 35-1 | E2924100444 | DISPLAY BOARD | 1 | |
| 35-2 | E2924100454 | CONTROL BOARD | 1 | |
| 36 | 0027103008 | MACHINE SCREW | 18 | |
| 37 | E2352400504 | OPERATING PANEL COVER | 1 | |
| 38 | Y0605012034 | FLAT TORQUE HINGE | 2 | |
| 39 | 0027103010 | MACHINE SCREW | 10 | |
| 40 | Y0605012100 | ROLLER CATCHER | 1 | |
| 41 | Y0605012101 | KEEPER | 1 | |
| 42 | Y0025303010 | MACHINE SCREW | 2 | |
| 43 | 0021003005 | MACHINE SCREW | 2 | |

BATTERY ASSY.

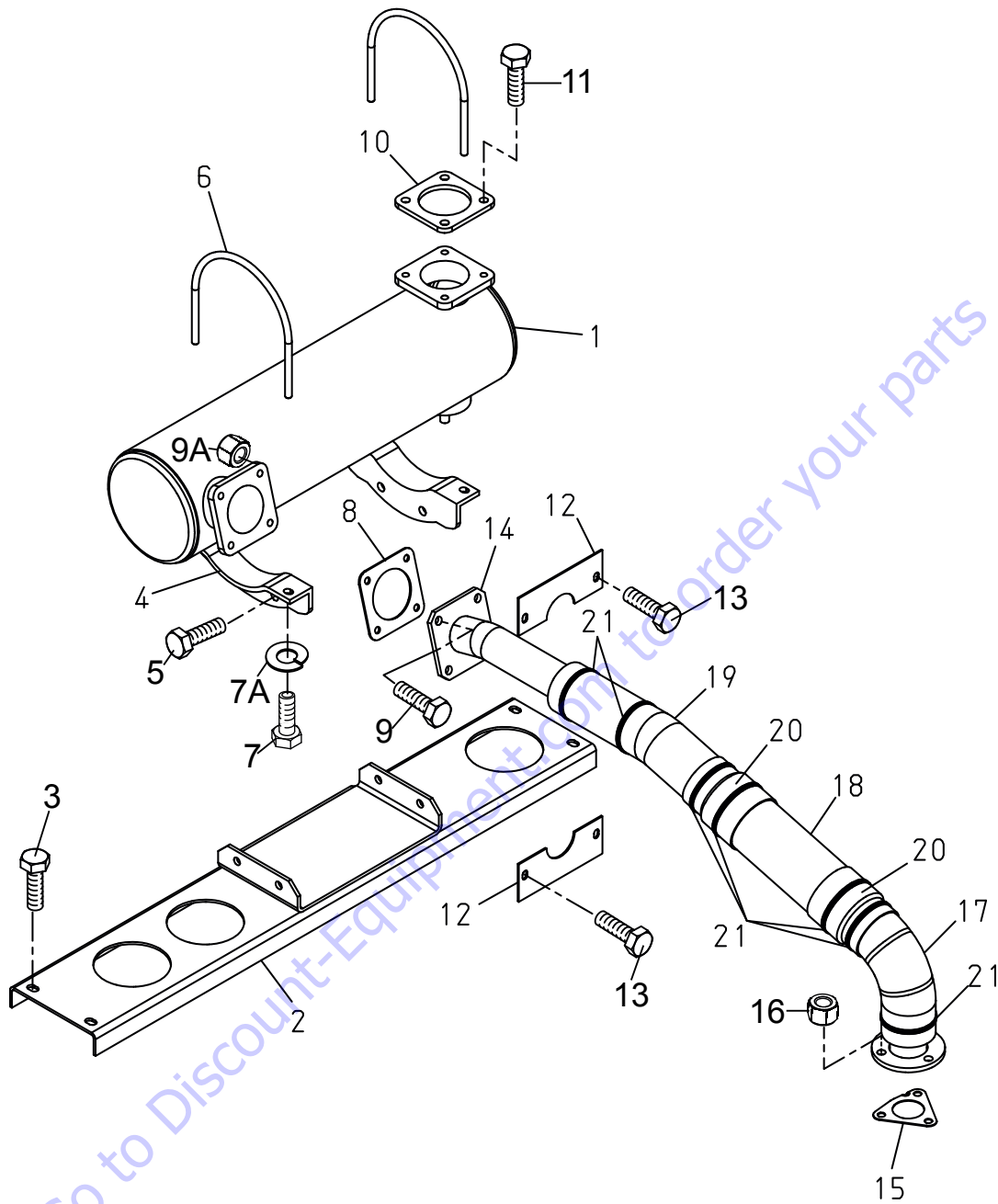


BATTERY ASSY.

| <u>NO.</u> | <u>PART NO.</u> | <u>PART NAME</u> | <u>QTY.</u> | <u>REMARKS</u> |
|------------|-----------------|------------------------|-------------|-------------------------|
| 1 | 0602220199 | BATTERY | 1 | |
| 2 | M9310500014 | BATTERY SHEET | 1 | |
| 3 | M9103000304 | BATTERY BAND | 1 | |
| 4 | 0602220920 | BATTERY BOLT SET | 2..... | INCLUDES ITEMS W/# |
| 5# | 0040006000 | WASHER, LOCK | 2 | |
| 6 | E2347400504 | BATTERY CABLE | 1 | |
| 7 | E2347400604 | BATTERY CABLE | 1 | |
| 8 | E2347200504 | EARTH CABLE | 1 | |
| 9 | 0017110025 | HEX. HEAD BOLT | 1 | |
| 9A | 0040510000 | TOOTHED WASHER | 1 | |
| 10 | 011208025 | HEX. HEAD BOLT | 1..... | REPLACES P/N 0016908025 |
| 10A | 0040508000 | TOOTHED WASHER | 1 | |

Go to Discount-Equipment.com to order your parts

MUFFLER ASSY.

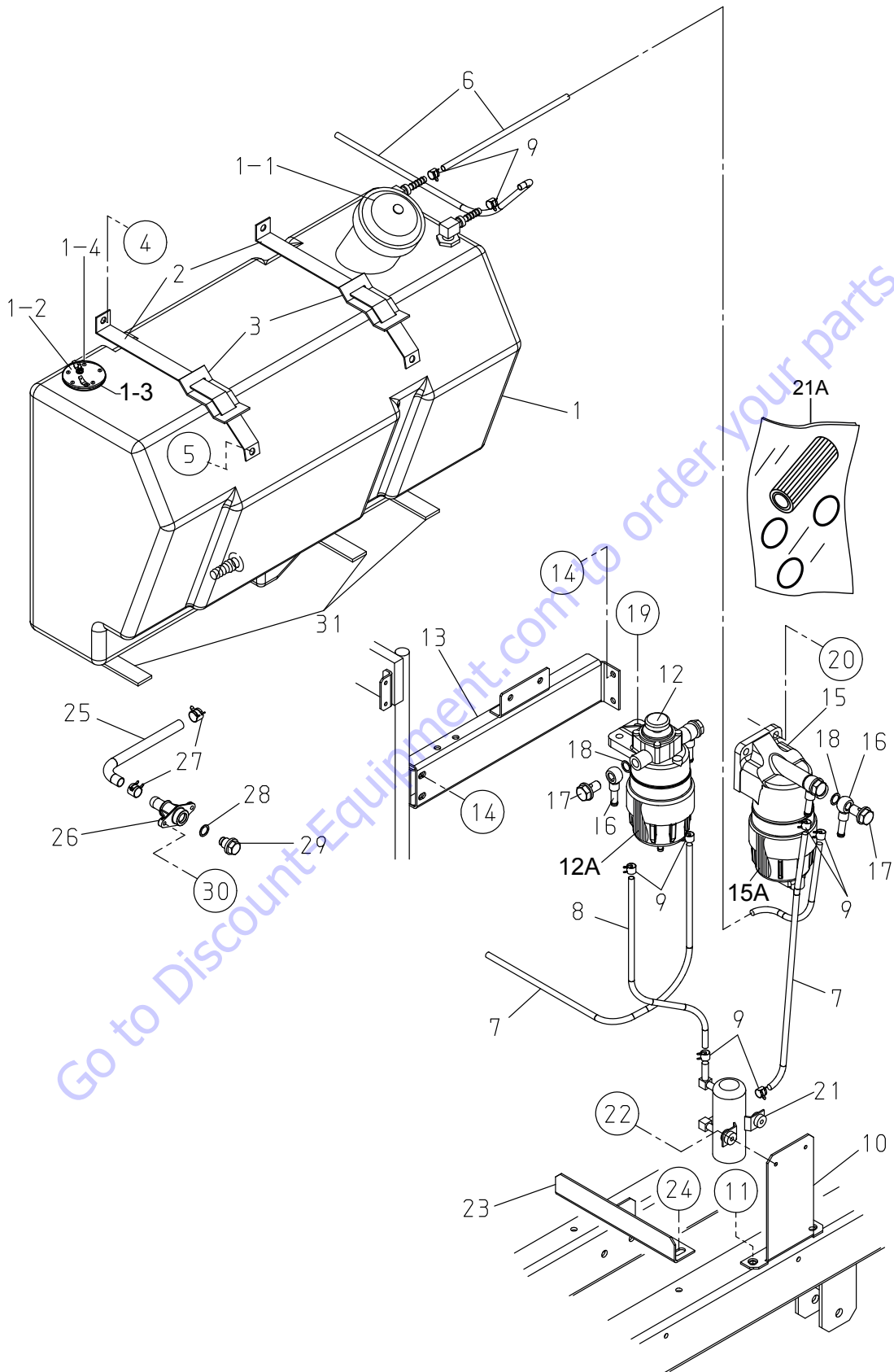


MUFFLER ASSY.

| <u>NO.</u> | <u>PART NO.</u> | <u>PART NAME</u> | <u>QTY.</u> | <u>REMARKS</u> |
|------------|-----------------|-------------------------|-------------|--------------------------|
| 1 | 8982353890 | DOC..... | 1..... | REPLACES P/N Y0602330111 |
| 2 | E2334801703 | DOC BRACKET | 1 | |
| 3 | 011008020 | HEX. HEAD BOLT..... | 4..... | REPLACES P/N 0016908020 |
| 4 | 8982284330 | DOC SUPPORT..... | 2..... | REPLACES P/N Y0602330210 |
| 5 | 012010030 | HEX. HEAD BOLT..... | 4..... | REPLACES P/N 0017110030 |
| 6 | 8982103230 | U-BOLT..... | 2..... | REPLACES P/N Y0602322091 |
| 7 | 020108060 | HEX. HEAD NUT..... | 4..... | REPLACES P/N 0030008000 |
| 7A | 0040008000 | WASHER, LOCK | 4 | |
| 8 | 8973731080 | GASKET..... | 1..... | REPLACES P/N Y0602320212 |
| 9 | 8980435280 | HEX. HEAD BOLT..... | 4..... | REPLACES P/N Y0602322090 |
| 9A | 8971616070 | HEX. NUT..... | 4..... | REPLACES P/N Y0602323007 |
| 10 | M1334300504 | FLANGE | 1 | |
| 11 | 011008020 | HEX. HEAD BOLT..... | 4..... | REPLACES P/N 0016908020 |
| 12 | M1331400204 | COVER, EXHAUST PIPE | 2 | |
| 13 | 0016906015 | HEX. HEAD BOLT | 4 | |
| 14 | E2334001403 | EXHAUST PIPE | 1 | |
| 15 | 8973679180 | GASKET..... | 1..... | REPLACES P/N Y0602320211 |
| 16 | 0207108000 | SELF-LOCKING NUT | 3 | |
| 17 | E2334801404 | EXHAUST HEAT SHIELD (A) | 1 | |
| 18 | E2334801504 | EXHAUST HEAT SHIELD (B) | 1 | |
| 19 | E2334801604 | EXHAUST HEAT SHIELD (C) | 1 | |
| 20 | Y0272100270 | HEAT SHIELD TAPE | 2 | |
| 21 | Y0602325051 | METAL CABLE TIE | 7 | |

Go to Discount-Equipment.com to order your parts

FUEL TANK ASSY.



FUEL TANK ASSY.

| <u>NO.</u> | <u>PART NO.</u> | <u>PART NAME</u> | <u>QTY.</u> | <u>REMARKS</u> |
|------------|-----------------|-----------------------------|-------------|--------------------------|
| 1 | E2364001202 | FUEL TANK | 1 | |
| 1-1 | 0605505070 | CAP, FUEL TANK | 1 | |
| 1-2 | 0605501076 | FUEL SENDER UNIT | 1 | |
| 1-3 | 0605516090 | GASKET | 1 | |
| 1-4 | 0027104015 | MACHINE SCREW | 5 | |
| 2 | E2364300504 | FUEL TANK BRACKET | 2 | |
| 3 | M9310500104 | SUPPORTER SHEET | 2 | |
| 4 | 011008020 | HEX. HEAD BOLT | 2 | REPLACES P/N 0016908020 |
| 5 | 020108060 | SELF-LOCKING NUT | 2 | REPLACES P/N 0207008000 |
| 6 | 0191300550 | FUEL HOSE | 2 | |
| 7 | 0191300600 | FUEL HOSE | 2 | |
| 8 | 0191300500 | FUEL HOSE | 1 | |
| 9 | Y0605515340 | HOSE BAND | 10 | |
| 10 | E2367700504 | FUEL PUMP BRACKET | 1 | |
| 11 | 011008020 | HEX. HEAD BOLT | 2 | REPLACES P/N 0016908020 |
| 12 | 8982369900 | FUEL FILTER (MAIN) | 1 | REPLACES P/N 0602042428 |
| 12A | 8982402790 | ELEMENT, FUEL FILTER (MAIN) | 1 | |
| 13 | E2367700403 | FILTER BRACKET | 1 | |
| 14 | 011008020 | HEX. HEAD BOLT | 4 | REPLACES P/N 0016908020 |
| 15 | 8982369910 | FUEL FILTER (PRE.) | 1 | REPLACES P/N Y0602042429 |
| 15A | 8982402800 | ELEMENT, FUEL FILTER (PRE) | 1 | |
| 16 | 8981263320 | JOINT PIPE | 4 | REPLACES P/N Y0602042623 |
| 17 | 1096751930 | EYE BOLT | 4 | REPLACES P/N Y0602042624 |
| 18 | 1096300850 | PACKING | 8 | REPLACES P/N Y0602021700 |
| 19 | 012210035 | HEX. HEAD BOLT | 2 | REPLACES P/N 0017110035 |
| 20 | 0017110025 | HEX. HEAD BOLT | 2 | |
| 21 | 8980682750 | FUEL FEED PUMP | 1 | REPLACES P/N 0602023240 |
| 21A | 8981731650 | KIT, FUEL PUMP | 1 | |
| 22 | 0017106030 | HEX. HEAD BOLT | 2 | |
| 23 | E2364300404 | FUEL TANK BRACKET | 1 | |
| 24 | 0016910020 | HEX. HEAD BOLT | 2 | |
| 25 | Y0191500360 | FUEL DRAIN HOSE | 1 | |
| 26 | 1502025103C | OIL DRAIN JOINT | 1 | REPLACES P/N M9200000003 |
| 27 | 0605515198 | HOSE BAND | 2 | |
| 28 | 0150000018 | O-RING | 1 | |
| 29 | 0802011104 | DRAIN BOLT | 1 | REPLACES P/N M9200200004 |
| 30 | 011206020 | HEX. HEAD BOLT | 2 | REPLACES P/N 0019206020 |
| 31 | 0222100180 | RUBBER SEAL | 3 | |

PARTS FINDER

**Search Website
by Part Number**



**Search Manual
Library For Parts
Manual & Lookup Part
Numbers – Purchase
or Request Quote**

A screenshot of the "Search Manuals" form. The form has a title "Search Manuals" and a subtitle "Please provide information to help us locate the manual and/or parts you need." It includes fields for "Brand", "Model", "Serial", "Part Number", and "Quantity". There is a "Search" button at the bottom.

**Can't Find Part or
Manual? Request Help
by Manufacturer,
Model & Description**

A screenshot of the "Parts Order Form". The form has a title "Parts Order Form" and a subtitle "Please fill in as much information as possible." It includes fields for "Manufacturer", "Model", "Description", "Part Number", "Quantity", and "Comments". There is a "Submit" button at the bottom.

Discount-Equipment.com is your online resource for quality parts & equipment.

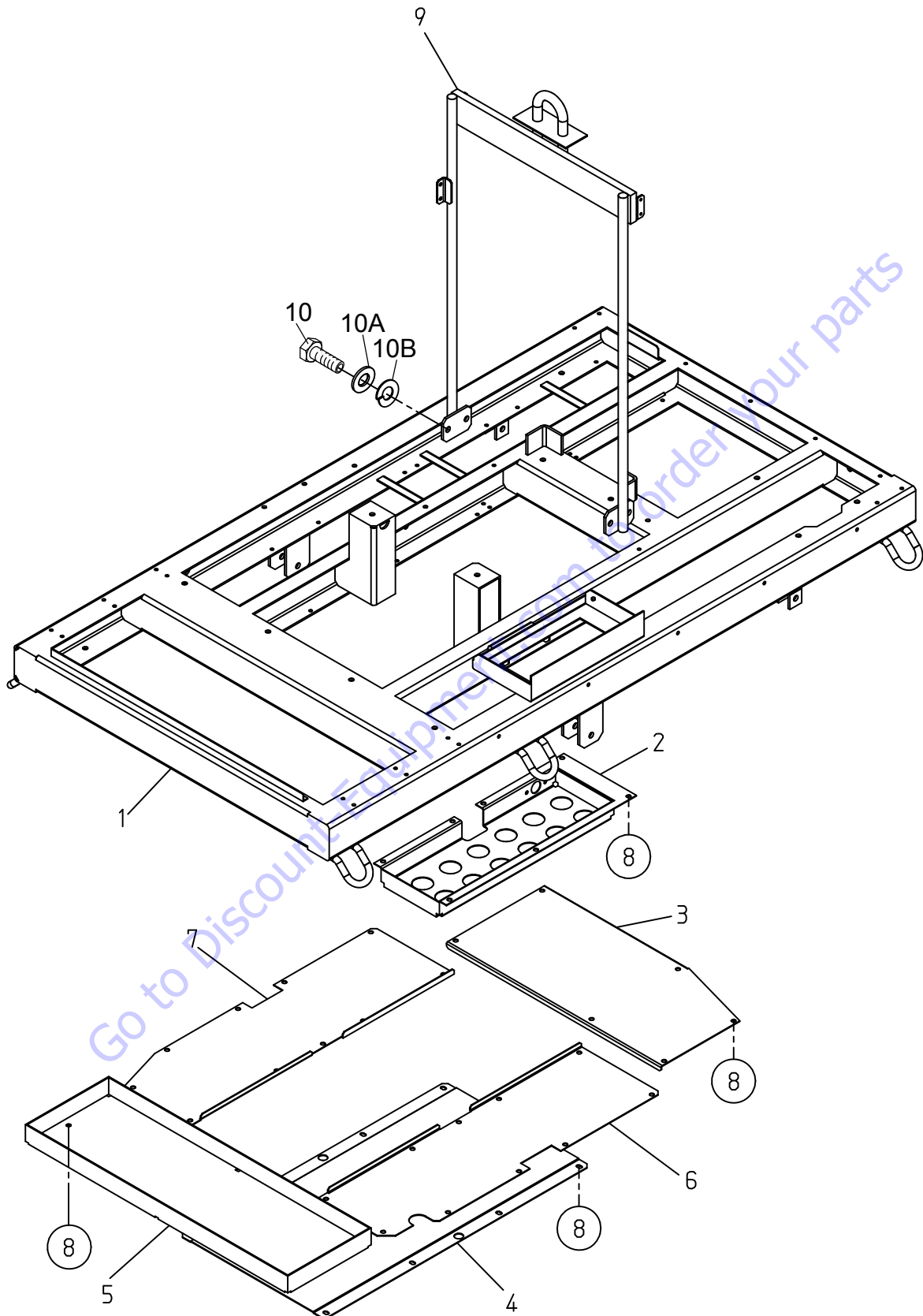
Florida: **561-964-4949** Outside Florida TOLL FREE: **877-690-3101**

Need parts?

Click on this link: <http://www.discount-equipment.com/category/5443-parts/> and choose one of the options to help get the right parts and equipment you are looking for. Please have the machine model and serial number available in order to help us get you the correct parts. If you don't find the part on the website or on one of the online manuals, please fill out the request form and one of our experienced staff members will get back to you with a quote for the right part that your machine needs.

We sell worldwide for the brands: Genie, Terex, JLG, MultiQuip, Mikasa, Essick, Whiteman, Mayco, Toro Stone, Diamond Products, Generac Magnum, Airman, Haulotte, Barreto, Power Blanket, Nifty Lift, Atlas Copco, Chicago Pneumatic, Allmand, Miller Curber, Skyjack, Lull, Skytrak, Tsurumi, Husquvarna Target, , Stow, Wacker, Sakai, Mi-T- M, Sullair, Basic, Dynapac, MBW, Weber, Bartell, Bennar Newman, Haulotte, Ditch Runner, Menegotti, Morrison, Contec, Buddy, Crown, Edco, Wyco, Bomag, Laymor, Barreto, EZ Trench, Bil-Jax, F.S. Curtis, Gehl Pavers, Heli, Honda, ICS/PowerGrit, IHI, Partner, Imer, Clipper, MMD, Koshin, Rice, CH&E, General Equipment, ,AMida, Coleman, NAC, Gradall, Square Shooter, Kent, Stanley, Tamco, Toku, Hatz, Kohler, Robin, Wisconsin, Northrock, Oztec, Toker TK, Rol-Air, Small Line, Wanco, Yanmar

ENCLOSURE 1 ASSY.

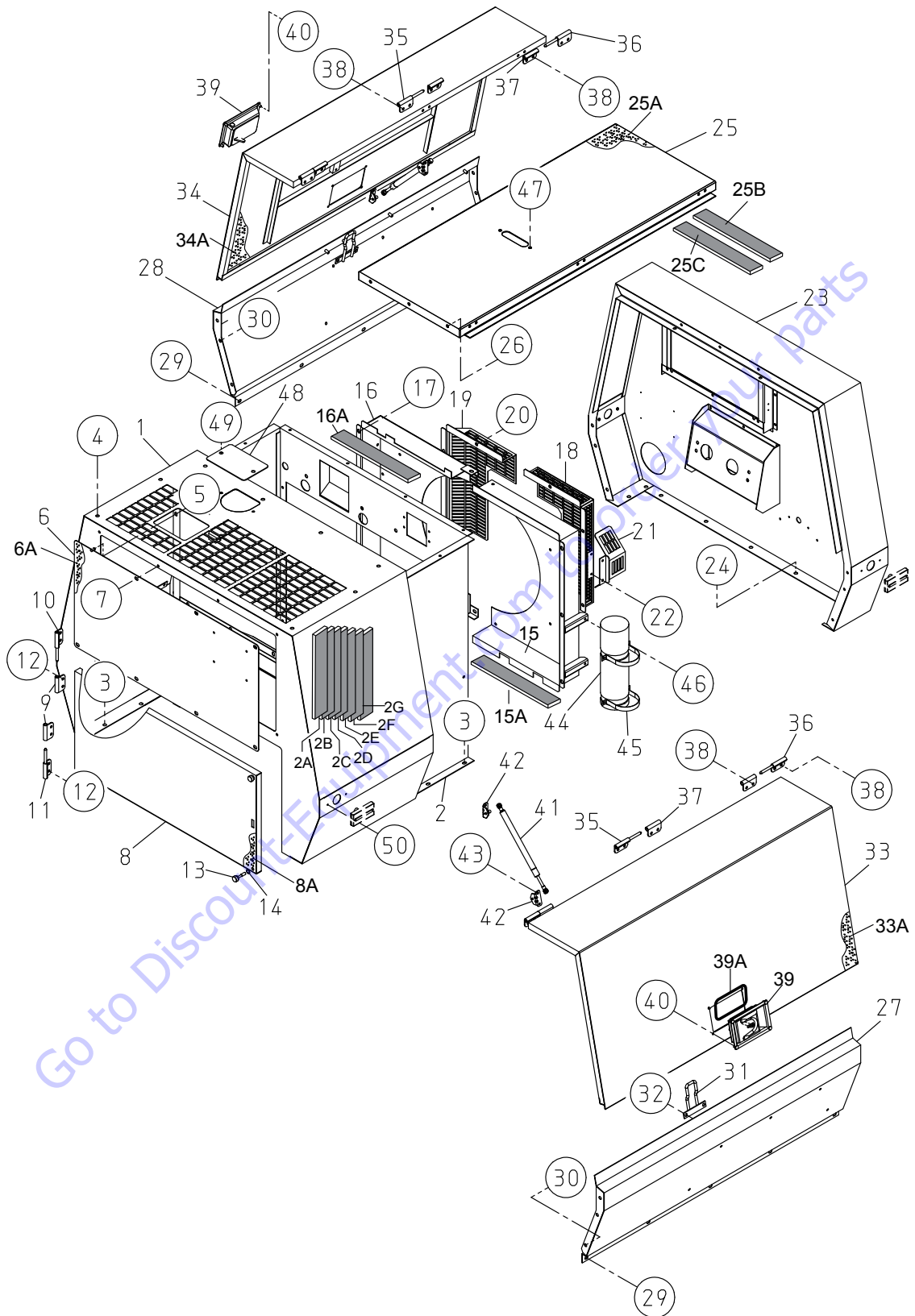


ENCLOSURE 1 ASSY.

| <u>NO.</u> | <u>PART NO.</u> | <u>PART NAME</u> | <u>QTY.</u> | <u>REMARKS</u> |
|------------|-----------------|----------------------|-------------|-------------------------|
| 1 | E2414002512 | BASE | 1 | |
| 2 | E2414100613 | BASE COVER | 1 | |
| 3 | E2414102714 | BASE COVER | 1 | |
| 4 | E2414102803 | BASE COVER | 1 | |
| 5 | E2414102903 | BASE COVER | 1 | |
| 6 | E2414103014 | BASE COVER | 1 | |
| 7 | E2414103114 | BASE COVER | 1 | |
| 8 | 011008020 | HEX. HEAD BOLT | 33 | REPLACES P/N 0016908020 |
| 9 | E2434300203 | CENTER FRAME | 1 | |
| 10 | 0012312030 | HEX. HEAD BOLT | 4 | REPLACES P/N 0013612030 |
| 10A | 031112230 | WASHER, FLAT | 4 | REPLACES P/N 0041212000 |
| 10B | 0040012000 | WASHER, LOCK | 4 | |

Go to Discount-Equipment.com to order your parts

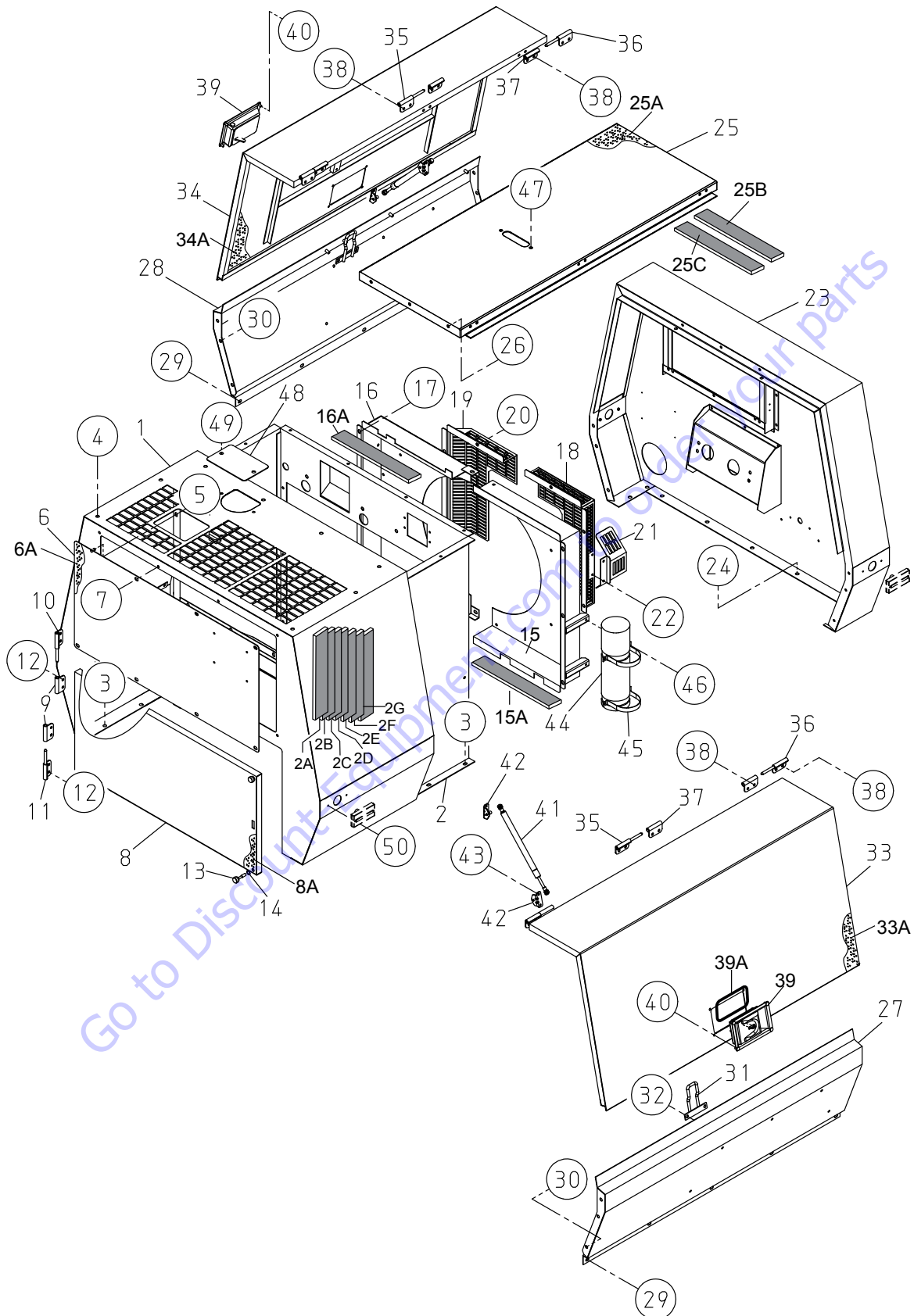
ENCLOSURE 2 ASSY.



ENCLOSURE 2 ASSY.

| <u>NO.</u> | <u>PART NO.</u> | <u>PART NAME</u> | <u>QTY.</u> | <u>REMARKS</u> |
|------------|-----------------|-----------------------|-------------|-------------------------|
| 1 | E2424002202 | FRONT FRAME | 1 | |
| 2 | E2424002302 | FRONT FRAME PANEL | 1 | |
| 2A | E2494201004 | ACOUSTIC SHEET | 1 | |
| 2B | Y0314900445 | SEAL RUBBER | 1 | |
| 2C | Y0314900225 | SEAL RUBBER | 1 | |
| 2D | Y0314900085 | SEAL RUBBER | 2 | |
| 2E | Y0314900115 | SEAL RUBBER | 1 | |
| 2F | Y0314900420 | SEAL RUBBER | 1 | |
| 2G | Y0314900055 | SEAL RUBBER | 1 | |
| 3 | 011008020 | HEX. HEAD BOLT..... | 17 | REPLACES P/N 0016908020 |
| 4 | 0019208020 | HEX. HEAD BOLT | 8 | |
| 5 | 020108060 | SELF-LOCKING NUT..... | 13 | REPLACES P/N 0207008000 |
| 6 | E2424201904 | FRONT COVER | 1 | |
| 6A | E2494205104 | ACOUSTIC SHEET | 1 | |
| 7 | 0019208020 | HEX. HEAD BOLT | 8 | |
| 8 | E2424200403 | FRONT COVER | 1 | |
| 8A | E2494204904 | ACOUSTIC SHEET | 1 | |
| 9 | M9112100604 | HINGE | 2 | |
| 10 | M9112100504 | HINGE | 1 | |
| 11 | M9112100404 | HINGE | 1 | |
| 12 | 0019208020 | HEX. HEAD BOLT | 8 | |
| 13 | M9220100004 | SET SCREW | 2 | |
| 14 | 0080200007 | E-RING | 2 | |
| 15 | E2311302603 | FAN SHROUD | 1 | |
| 15A | Y0314900420 | SEAL RUBBER | 2 | |
| 16 | E2311302703 | FAN SHROUD | 1 | |
| 16A | Y0314900405 | SEAL RUBBER | 2 | |
| 17 | 011008020 | HEX. HEAD BOLT..... | 8 | REPLACES P/N 0016908020 |
| 18 | E2311400903 | FAN GUARD | 1 | |
| 19 | E2311401003 | FAN GUARD | 1 | |
| 20 | 011008020 | HEX. HEAD BOLT..... | 6 | REPLACES P/N 0016908020 |
| 21 | E2314800304 | ALTERNATOR COVER | 1 | |
| 22 | 0016906015 | HEX. HEAD BOLT | 2 | |
| 23 | E2444002602 | REAR FRAME | 1 | |
| 24 | 0019208020 | HEX. HEAD BOLT | 9 | |
| 25 | E2464002203 | ROOF PANEL | 1 | |
| 25A | E2494602804 | ACOUSTIC SHEET | 1 | |
| 25B | E2491600304 | SEAL RUBBER | 1 | |
| 25C | E2491600404 | SEAL RUBBER | 1 | |
| 26 | 011008020 | HEX. HEAD BOLT..... | 6 | REPLACES P/N 0016908020 |
| 27 | E2454201213 | SPLASHER PANEL | 1 | |
| 28 | E2454201313 | SPLASHER PANEL | 1 | |
| 29 | 0019208020 | HEX. HEAD BOLT | 10 | |
| 30 | 011008020 | HEX. HEAD BOLT..... | 12 | REPLACES P/N 0016908020 |

ENCLOSURE 2 ASSY. (CONTINUED)

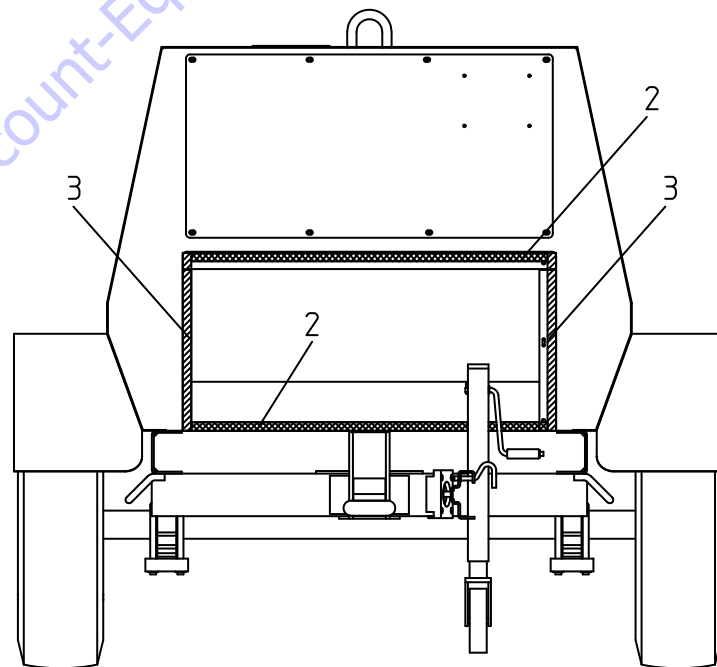
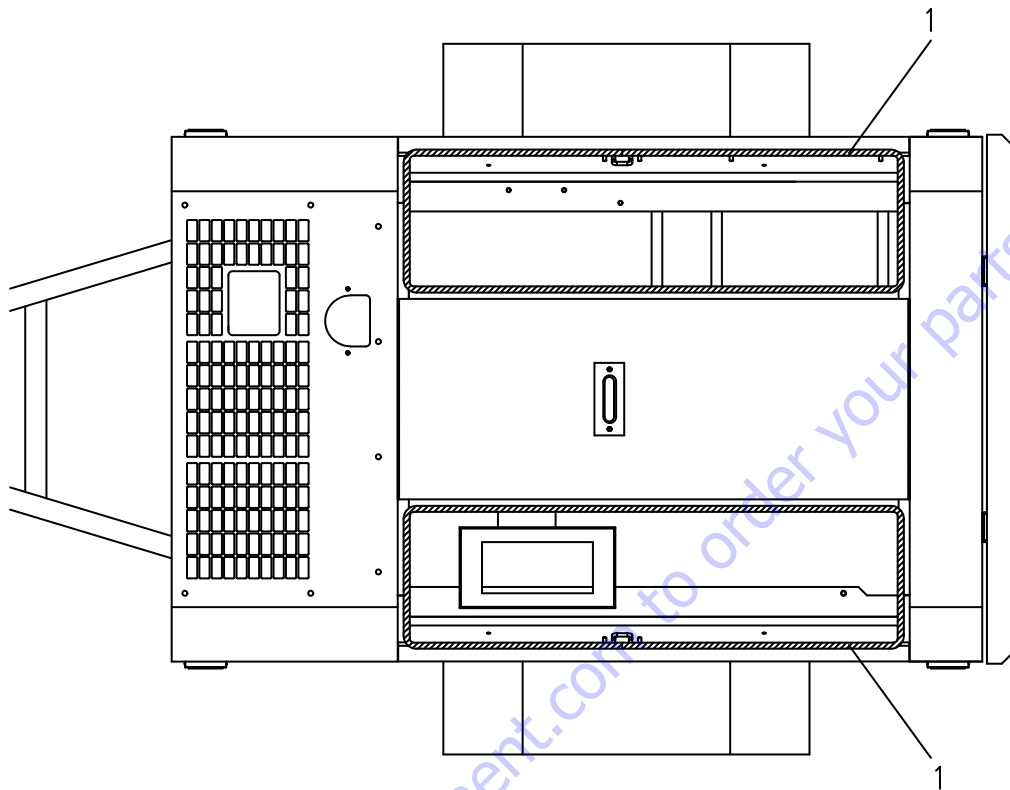


ENCLOSURE 2 ASSY. (CONTINUED)

| <u>NO.</u> | <u>PART NO.</u> | <u>PART NAME</u> | <u>QTY.</u> | <u>REMARKS</u> |
|------------|-----------------|------------------------|-------------|-------------------------|
| 31 | E2457800604 | SPLASHER PANEL HOOK | 2 | |
| 32 | 020108060 | SELF-LOCKING NUT | 4 | REPLACES P/N 0207008000 |
| 33 | E2454003803 | SIDE DOOR | 1 | |
| 33A | E2494511304 | ACOUSTIC SHEET | 1 | |
| 34 | E2454003903 | SIDE DOOR | 1 | |
| 34A | E2494511404 | ACOUSTIC SHEET | 1 | |
| 35 | M9112100504 | HINGE | 4 | |
| 36 | M9112100404 | HINGE | 2 | |
| 37 | M9112100604 | HINGE | 6 | |
| 38 | 0019208020 | HEX. HEAD BOLT | 24 | |
| 39 | Y0605012309 | DOOR HANDLE ASSY. | 2 | |
| 39A | C9312500004 | SEAL RUBBER | 2 | |
| 40 | 0176060030 | SELF-LOCKING NUT | 8 | REPLACES P/N 0207006000 |
| 41 | Y0605001030 | GAS SPRING | 2 | |
| 42 | Y0605001031 | BRACKET | 4 | |
| 43 | 0016906015 | HEX. HEAD BOLT | 8 | |
| 44 | 0600800321 | MANUAL HOLDER | 1 | |
| 45 | M1483600804 | CLAMPER, MANUAL-HOLDER | 2 | |
| 46 | 0016906015 | HEX. HEAD BOLT | 4 | |
| 47 | 0019208020 | HEX. HEAD BOLT | 2 | |
| 48 | E2424202004 | RADIATOR CAP COVER | 1 | |
| 49 | 0019208020 | HEX. HEAD BOLT | 2 | |
| 50 | Y0021104025 | MACHINE SCREW | 8 | |

Go to Discount-Equipment.com to order your parts

RUBBER SEALS ASSY.

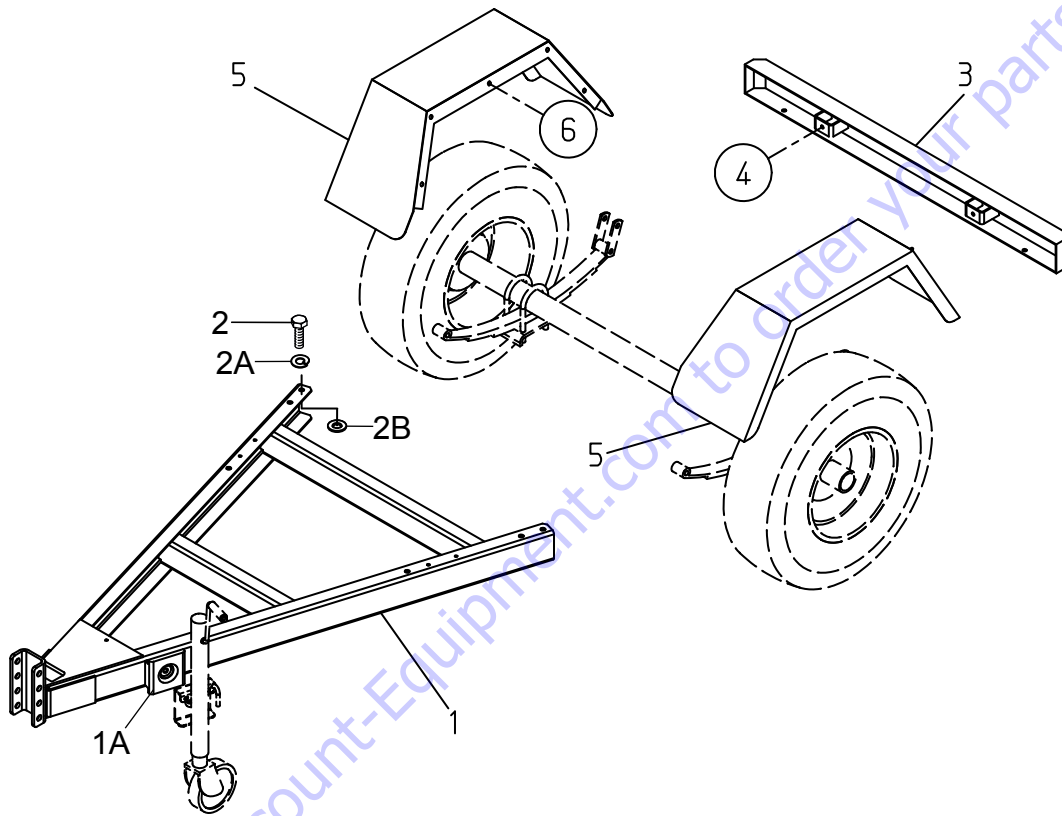


RUBBER SEALS ASSY.

| <u>NO.</u> | <u>PART NO.</u> | <u>PART NAME</u> | <u>QTY.</u> | <u>REMARKS</u> |
|------------|-----------------|------------------|-------------|----------------|
| 1 | Y0419003740 | SEAL, RUBBER | 2 | |
| 2 | Y0222700835 | SEAL, RUBBER | 2 | |
| 3 | Y0222700415 | SEAL, RUBBER | 2 | |

Go to Discount-Equipment.com to order your parts

TRAILER ASSY.

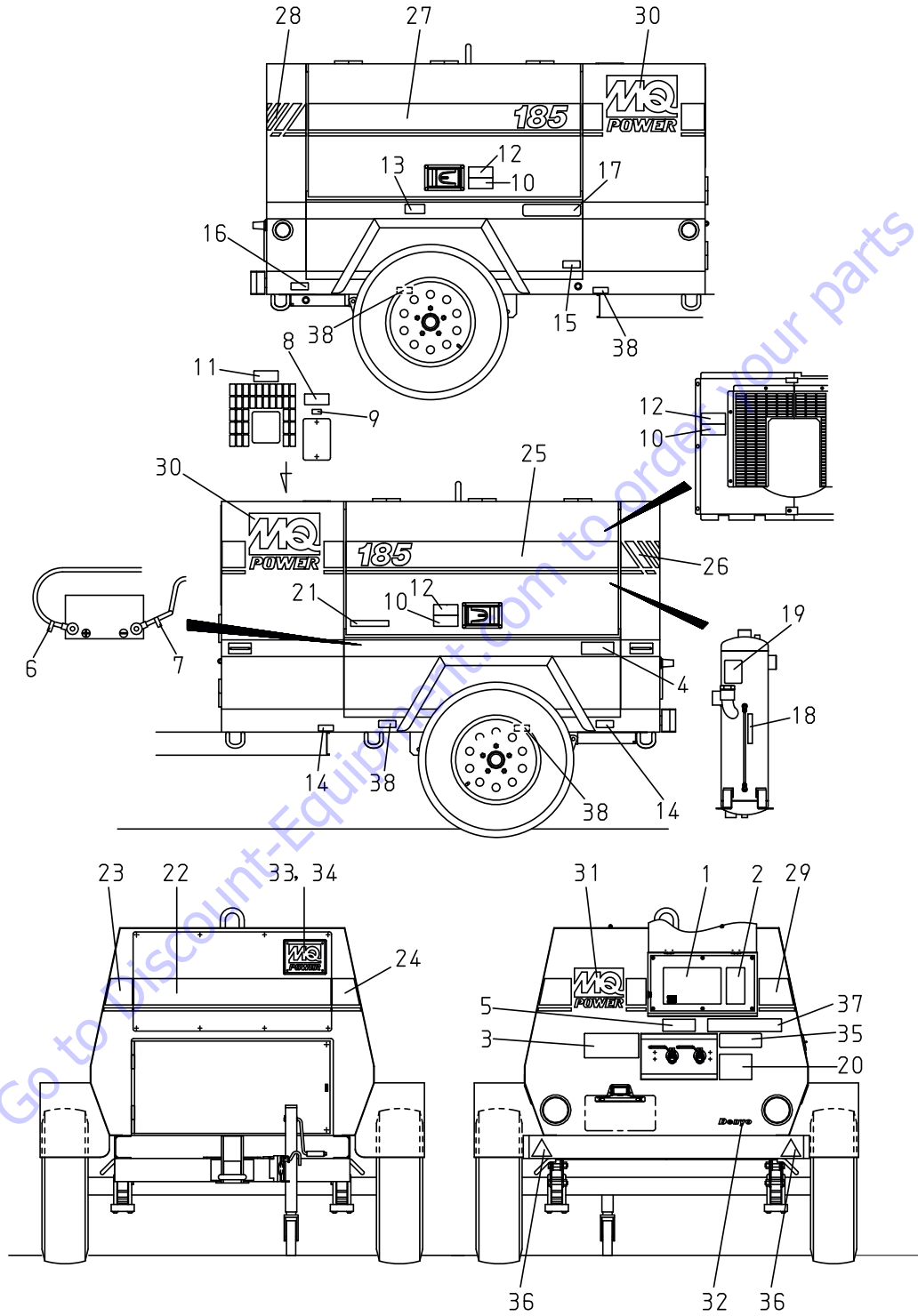


TRAILER ASSY.

| <u>NO.</u> | <u>PART NO.</u> | <u>PART NAME</u> | <u>QTY.</u> | <u>REMARKS</u> |
|------------|-----------------|----------------------|-------------|-------------------------|
| 1 | E2417804102 | TRACTION ROD | 1 | |
| 1A | Y0605805690 | BRACKET, JACK MOUNT | 1 | |
| 2 | 0012312030 | HEX. HEAD BOLT | 6..... | REPLACES P/N 0013612030 |
| 2A | 0040012000 | WASHER, LOCK | 6 | |
| 2B | 031112230 | WASHER, FLAT | 6..... | REPLACES P/N 0041212000 |
| 3 | E2417804003 | REAR BUMPER | 1 | |
| 4 | 0016910025 | HEX. HEAD BOLT | 2 | |
| 5 | E2454400403 | TIRE COVER | 2 | |
| 6 | 0019208020 | HEX. HEAD BOLT | 10 | |

Go to Discount-Equipment.com to order your parts

NAMEPLATE AND DECALS ASSY.



NAMEPLATE AND DECALS ASSY.

| NO. | PART NO. | PART NAME | QTY. | REMARKS |
|------------|-----------------|--|-------------|----------------|
| 1 | E2511207103 | DECAL; CONTROL PANEL | 1..... | E21120710 |
| 2 | E2511207203 | DECAL; ENGINE OPERATING..... | 1..... | E21120720 |
| 3 | E2551002803 | DECAL; WARNING SAFETY INSTRUCTION.... | 1..... | E25100280 |
| 4 | E2551003004 | DECAL; WARNING HIGH PRESSURE | 1..... | E25100300 |
| 5 | E2551003104 | DECAL; WARNING RESIDUAL PRESSURE | 1..... | E25100310 |
| 6 | M9500300104 | DECAL; + | 1..... | M90030010 |
| 7 | M9500300004 | DECAL; - | 1..... | M90030000 |
| 8 | M9503100004 | DECAL; WARNING RADIATOR CAP..... | 1..... | M90310000 |
| 9 | M9500100004 | DECAL; WATER..... | 1..... | M90010000 |
| 10 | M9510100004 | DECAL; CAUTION HIGH TEMP..... | 3..... | M91010000 |
| 11 | M9503200004 | DECAL; WARNING EXHAUST GAS..... | 1..... | M90320000 |
| 12 | M9503000004 | DECAL; WARNING ROTATING PART | 3..... | M90300000 |
| 13 | M9501500004 | DECAL; DIESEL FUEL | 1..... | M90150000 |
| 14 | M9500000004 | DECAL; OIL DRAIN | 2..... | M90000000 |
| 15 | M9500100104 | DECAL; WATER DRAIN..... | 1..... | M90010010 |
| 16 | M9500500104 | DECAL; FUEL DRAIN..... | 1..... | M90050010 |
| 17 | M9503000103 | DECAL; DAILY CHECK WATER AND OIL | 1..... | M90300010 |
| 18 | E2531200004 | DECAL; COMP. OIL LEVEL GAUGE | 1..... | E23120000 |
| 19 | E9541102104 | DECAL; DISCHARGE AIR OIL MIXED..... | 1..... | E94110210 |
| 20 | E2531100103 | DECAL; NOISE EMISSION | 1..... | E23110010 |
| 21 | M9510000104 | DECAL; DOCUMENT BOX LOCATED | 1..... | M91000010 |
| 22 | E2561100104 | STRIPE | 1 | |
| 23 | E2561100204 | STRIPE | 1 | |
| 24 | E2561100304 | STRIPE | 1 | |
| 25 | E2561100403 | STRIPE | 1 | |
| 26 | E2561100604 | STRIPE | 1 | |
| 27 | E2561100503 | STRIPE | 1 | |
| 28 | E2561100704 | STRIPE | 1 | |
| 29 | E2561100804 | STRIPE | 1 | |
| 30 | E2561002503 | STICKER, MQ | 2 | |
| 31 | E2561002603 | STICKER, MQ | 1 | |
| 32 | E9511202104 | STICKER, DENYO | 1 | |
| 33 | 0600500092 | EMBLEM | 1 | |
| 34 | 0021106015 | MACHINE SCREW | 4 | |
| 35 | M9511200103 | TIER 4F..... | 1..... | M91120010 |
| 36 | W6140635004 | REFLECTION SHEET | 2 | |
| 37 | E2551002903 | DECAL; HANDLING PROCEDURES | 1..... | E25100290 |
| 38 | E9511102704 | DECAL; FORK POSITION..... | 4..... | E91110270 |

PARTS FINDER

**Search Website
by Part Number**



**Search Manual
Library For Parts
Manual & Lookup Part
Numbers – Purchase
or Request Quote**

A screenshot of the "Search Manuals" form. The form has a title "Search Manuals" and a subtitle "Please provide information to help us locate the manual and/or parts you need." It includes several input fields: "Brand" (a dropdown menu), "Model Number" (a text field), "Year" (a dropdown menu), "Serial" (a text field), "Part Number" (a text field), and "Quantity" (a text field). There is a "Search" button at the bottom of the form.

**Can't Find Part or
Manual? Request Help
by Manufacturer,
Model & Description**

A screenshot of the "Parts Order Form". The form has a title "Parts Order Form" and a subtitle "Please fill in as much information as possible." It includes several input fields: "Manufacturer" (a dropdown menu), "Model" (a text field), "Year" (a dropdown menu), "Description" (a text field), "Part Number" (a text field), "Quantity" (a text field), and "Comments" (a text area). There is a "Submit" button at the bottom of the form.

Discount-Equipment.com is your online resource for quality parts & equipment.

Florida: **561-964-4949** Outside Florida TOLL FREE: **877-690-3101**

Need parts?

Click on this link: <http://www.discount-equipment.com/category/5443-parts/> and choose one of the options to help get the right parts and equipment you are looking for. Please have the machine model and serial number available in order to help us get you the correct parts. If you don't find the part on the website or on one of the online manuals, please fill out the request form and one of our experienced staff members will get back to you with a quote for the right part that your machine needs.

We sell worldwide for the brands: Genie, Terex, JLG, MultiQuip, Mikasa, Essick, Whiteman, Mayco, Toro Stone, Diamond Products, Generac Magnum, Airman, Haulotte, Barreto, Power Blanket, Nifty Lift, Atlas Copco, Chicago Pneumatic, Allmand, Miller Curber, Skyjack, Lull, Skytrak, Tsurumi, Husquvarna Target, , Stow, Wacker, Sakai, Mi-T- M, Sullair, Basic, Dynapac, MBW, Weber, Bartell, Bennar Newman, Haulotte, Ditch Runner, Menegotti, Morrison, Contec, Buddy, Crown, Edco, Wyco, Bomag, Laymor, Barreto, EZ Trench, Bil-Jax, F.S. Curtis, Gehl Pavers, Heli, Honda, ICS/PowerGrit, IHI, Partner, Imer, Clipper, MMD, Koshin, Rice, CH&E, General Equipment, ,AMida, Coleman, NAC, Gradall, Square Shooter, Kent, Stanley, Tamco, Toku, Hatz, Kohler, Robin, Wisconsin, Northrock, Oztec, Toker TK, Rol-Air, Small Line, Wanco, Yanmar

PARTS MANUAL



www.Discount-Equipment.com

Go to Discount-Equipment.com to order your parts

