



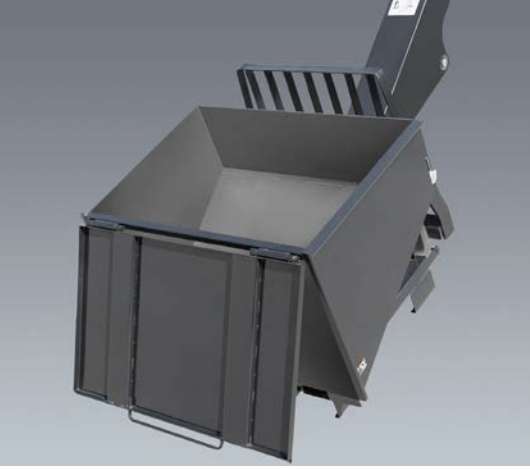
TELEHANDLER ATTACHMENT CATALOG

PIPE GRAPPLE • TRUSS BOOMS • TRASH HOPPER • WORK PLATFORMS • MATERIAL BUCKETS • SWING CARRIAGE



www.Discount-Equipment.com





ATTACHMENTS

Carriages

Standard Carriage.....	4
Side-Tilt Carriage.....	8
Swing Carriage.....	12
Dual Fork Positioning Carriage.....	14
Side-Shift Carriage.....	15

Auger	16
--------------------	----

Bale Clamp	17
-------------------------	----

Buckets

Material Bucket.....	18
4-in-1 Bucket.....	21
Fork Mounted Bucket.....	21
Grapple Bucket.....	22

Concrete Bucket	23
------------------------------	----

Coupler Mounted Lifting Hook	24
---	----

Fork Mounted Lifting Hook	25
--	----

Material Handling Arm	26
------------------------------------	----

Pipe Grapple	27
---------------------------	----

Round Fork Tines	27
-------------------------------	----

Sheet Material Adapter Truss Boom	28
--	----

Sweeper	30
----------------------	----

Tower	31
--------------------	----

Trash Hopper	33
---------------------------	----

Truss Boom	34
-------------------------	----

Universal Skid Steer Adapter	37
---	----

Fork Mounted Work Platform	38
---	----

FORKS

Forks	39
Pallet Forks, Cubing Forks, Lumber Forks	

Fork Pins/Bars	48
-----------------------------	----

Fork Extensions	49
------------------------------	----

Fork Caliper	50
---------------------------	----

LOAD CHARTS

Load Charts	51
--------------------------	----

To Place an Order

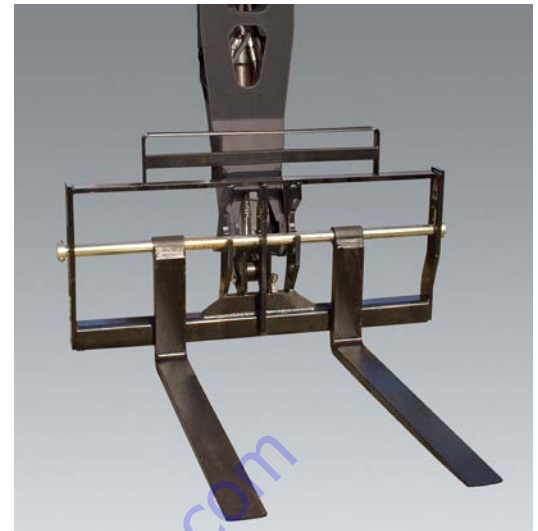
- Online: onlineexpress2.jlg.com
- Call: 1-877-JLG-LIFT (1-877-554-5438)
- Fax: 1-800-733-8939
- Email: partsprograms@jlg.com

Standard Carriage

The standard carriage is manufactured with high quality steel and is available in various sizes. This attachment is essential on most job sites, allowing operators to pick and place materials – from pallets of concrete block to loads of lumber.

Features

- Standard up-and-down tilt on horizontal plane
- Multiple fork options
- Available with 8,000 lb. lifting hook for most current production applications



Current Production Standard Carriages -

Ordered through JLG Aftermarket Parts or with new machine orders

CARRIAGE SIZE	50 in.	50 in.	50 in.	50 in.	60 in.	60 in.	60 in.	72 in.	72 in.	72 in.
LIFTING LUG	No	No	No	Yes	No	Yes	Yes	No	Yes	Yes
APPROX. WEIGHT	460 lb.	526 lb.	471 lb.	478 lb.	497 lb.	503 lb.	548 lb.	634 lb.	639 lb.	639 lb.
PART NO.	1001104435	10011130385*	1170021S	10011460845**	1170024S	10011460865**	1001192915**	1001132514S	10011460885**	1001193794S
FORK PIN NO.	3423275	3423275	3423275	3423275	3423242	3423242	3423242	3423276	3423276	3423276
JLG	642			•		•			•	
	943			•		•			•	
	1043			•		•			•	
	1055			•		•			•	•
	1255			•		•			•	•
JLG SERIES	G5-18A	•	•							
	G6-42A S/N 0160037722 - AFTER			•	•	•		•	•	
	G9-43A S/N 0160037671 - AFTER			•	•	•		•	•	
	G10-43A			•	•	•		•	•	
	G10-55A S/N 0160037689 - AFTER			•	•	•		•	•	
	G12-55A S/N 0160037689 - AFTER			•	•	•		•	•	
	G15-44A							•		•
SKYTRAK T4F	6036 S/N 0160069720 - Present, including 0160065792, 0160065798, 0160065824, 0160069383 & 0160069411				•	•			•	
	6042 S/N 0160069720 - Present, including 0160065792, 0160065798, 0160065824, 0160069383 & 0160069411				•	•			•	
	8042 S/N 0160069722 - Present, including 0160065791, 0160065796, 0160065825, 0160065826, 0160069336, 0160069359 & 0160069441				•	•			•	

* Used with Universal Skid Steer Adapter.

** May require purchase of new load chart booklet on some models.

NOTES:

- Use only JLG approved attachments with proper material handler model/attachment load capacity charts displayed in the operator's cab.
- Never use your attachment as a work platform or personnel carrier.

Can't find the attachment you are looking for? Contact your JLG Aftermarket Parts representative at 1-877-JLG-LIFT or visit www.jlg.com.

Current Production Standard Carriages -

Ordered through JLG Aftermarket Parts or with new machine orders

CARRIAGE SIZE	50 in.	50 in.	50 in.	50 in.	60 in.	60 in.	60 in.	72 in.	72 in.	72 in.
LIFTING LUG	No	No	No	Yes	No	Yes	Yes	No	Yes	Yes
APPROX. WEIGHT	460 lb.	526 lb.	471 lb.	478 lb.	497 lb.	503 lb.	548 lb.	634 lb.	639 lb.	639 lb.
PART NO.	1001104435	1001113038S*	11700215	1001146084S**	11700245	1001146086S**	1001192915**	1001132514S	1001146088S**	1001193794S
FORK PIN NO.	3423275	3423275	3423275	3423275	3423242	3423242	3423242	3423276	3423276	3423276
SKYTRAK TAF	10042 S/N 0160069722 - Present, including 0160065791, 0160065796, 0160065825, 0160065826, 0160069336, 0160069359 & 0160069441			.		.			.	
	10054 S/N 0160069722 - Present, including 0160065791, 0160065796, 0160065825, 0160065826, 0160069336, 0160069359 & 0160069441			.		.			.	
SKYTRAK LEGACY	6036 S/N 0160031200 - 0160069719, excluding: 0160065792, 0160065798, 0160065824, 0160069383 & 0160069411		
	6042 S/N 0160031200 - 0160069719, excluding: 0160065792, 0160065798, 0160065824, 0160069383 & 0160069411		
	8042 S/N 0160031235 - 0160069721, excluding: 0160065791, 0160065796, 0160065825, 0160065826, 0160069336, 0160069359 & 0160069441	
	10042 S/N 0160031425 - 0160069721, excluding: 0160065791, 0160065796, 0160065825, 0160065826, 0160069336, 0160069359 & 0160069441	
	10054 S/N 0160031255 - 0160069721, excluding: 0160065791, 0160065796, 0160065825, 0160065826, 0160069336, 0160069359 & 0160069441	
LULL	644E-42 S/N 0160031500 - AFTER		
	944E-42 S/N 0160031500 - AFTER		
	1044C-54 SII S/N 0160037893 - AFTER		

* Used with Universal Skid Steer Adapter.

** May require purchase of new load chart booklet on some models.

NOTES:

- Use only JLG approved attachments with proper material handler model/attachment load capacity charts displayed in the operator's cab.
 - Never use your attachment as a work platform or personnel carrier.
- Can't find the attachment you are looking for? Contact your JLG Aftermarket Parts representative at 1-877-JLG-LIFT or visit www.jlg.com.

ATTACHMENTS

Non-Current Production Standard Carriages Ordered exclusively through JLG Aftermarket Parts

CARRIAGE SIZE	48 in.	48 in.	48 in.	50 in.	50 in.	50 in.	50 in.	50 in.	50 in.	60 in.	60 in.	72 in.	72 in.	72 in.	74 in.			
APPROX. WEIGHT	509 lb.	417 lb.	377 lb.	460 lb.	479 lb.	490 lb.	471 lb.	532 lb.	500 lb.	510 lb.	534 lb.	509 lb.	586 lb.	634 lb.	598 lb.			
PART NO.	60405005	1001112618	1001107581	1001104435	11700195	11700205	11700215	71612005	48040	60406005	1170023	60407005	11700265	10011325145	48042			
FORK PIN NO.	7128772	(2)4040283	1001107336	3423275	3423275	3423275	3423275	90451058	10223049	7128792	3423242	90551013	3423276	3423276	10124495			
JLG	G5-19A		•	•														
	619A		•		•													
	G6-23A		•	•														
	723A		•		•													
	G6-42A S/N PRIOR TO 0160037722								•									
	G9-43A S/N PRIOR TO 0160037671									•								
	G10-55A S/N PRIOR TO 0160037689										•							
	G12-55A S/N PRIOR TO 0160037689											•						
TF6-42																		
GRADALL	G6-42P S/N PRIOR TO 0160037689																	
	G6-42P S/N 0160037689 -AFTER										•							
	522D/524D												•					
	534D-6													•				
	534D-9 S/N PRIOR TO 0160037689														•			
	534D-9 S/N 0160037689 -AFTER																•	
	534D-10 S/N PRIOR TO 0160037689																•	
	534D-10 S/N 0160037689 -AFTER																	•
	544D S/N PRIOR TO 0160037689																	•
	544D S/N 0160037689 -AFTER																	•
	534C-9																	•
	534C-10																	•
	544C																	•

NOTES:

- Use only JLG approved attachments with proper material handler model/attachment load capacity charts displayed in the operator's cab.
 - Never use your attachment as a work platform or personnel carrier.
- Can't find the attachment you are looking for? Contact your JLG Aftermarket Parts representative at 1-877-JLG-LIFT or visit www.jlg.com.

Non-Current Production Standard Carriages
 Ordered exclusively through JLG Aftermarket Parts

CARRIAGE SIZE	48 in.	48 in.	48 in.	50 in.	50 in.	50 in.	50 in.	50 in.	50 in.	60 in.	60 in.	72 in.	72 in.	72 in.	74 in.
APPROX. WEIGHT	509 lb.	417 lb.	377 lb.	460 lb.	479 lb.	490 lb.	471 lb.	532 lb.	500 lb.	510 lb.	534 lb.	509 lb.	586 lb.	634 lb.	598 lb.
PART NO.	60405005	1001112618	1001107581	1001104435	11700195	11700205	11700215	71612005	48040	60406005	1170023	60407005	11700265	10011325145	48042
FORK PIN NO.	7128772	(2)4040283	1001107336	3423275	3423275	3423275	3423275	90451058	10223049	7128792	3423242	90551013	3423276	3423276	10124495
SKYTRAK	4266	•								•		•			
	4270	•								•		•			
	4290	•								•		•			
	5028	•								•		•			
	6036 S/N PRIOR TO 0160031200	•								•		•			
	6042 S/N PRIOR TO 0160031200	•								•		•			
	8042 S/N PRIOR TO 0160031235	•								•		•			
	10042 S/N PRIOR TO 0160031425	•								•		•			
	10054 S/N PRIOR TO 0160031255	•								•		•			
LULL	644E-42 S/N PRIOR TO 0160031500	•								•		•			
	944E-42 S/N PRIOR TO 0160031500	•								•		•			
	1044C-54 SII S/N PRIOR TO 0160037893								•						•
	644B-37								•						•
	644B-42								•						•
	844C-42								•						•
	1044C-42/ 1044C-54								•						•
	6K-37								•						•
	6K-42								•						•
	8K-42								•						•
	10K-42/ 10K-54								•						•
644D-34								•						•	

To order go to Discount-Equipment.com

NOTES:

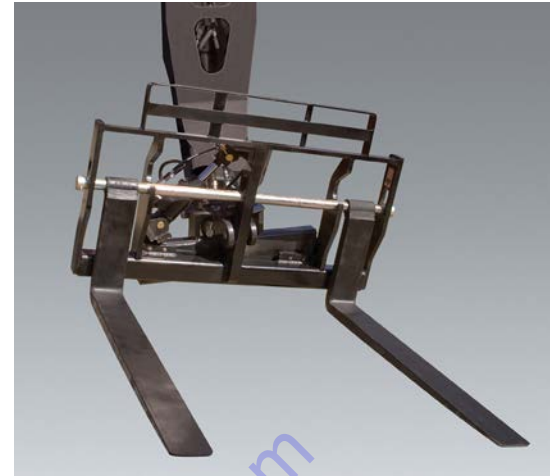
- Use only JLG approved attachments with proper material handler model/attachment load capacity charts displayed in the operator's cab.
 - Never use your attachment as a work platform or personnel carrier.
- Can't find the attachment you are looking for? Contact your JLG Aftermarket Parts representative at 1-877-JLG-LIFT or visit www.jlg.com.

Side-Tilt Carriage

Adding to the versatility of the telehandler, the side-tilt carriage keeps the load level even when the terrain isn't. The carriage tilts loads from side-to-side to allow for uneven landing areas like a roof or sloped bank.

Features

- Side-to-side tilt on vertical plane
- Standard up-and-down tilt on horizontal plane



Current Production Side-Tilt Carriages

Ordered through JLG Aftermarket Parts or with new machine orders

CARRIAGE SIZE		48 in.	48 in.	50 in.	50 in.	60 in.	60 in.	72 in.	72 in.
APPROX. WEIGHT		660 lb.	817 lb.	343 lb.	942 lb.	472 lb.	1022 lb.	677 lb.	1088 lb.
PART NO.		1001102331	1001104009*	1170054S	1001182951	1001101956S	1001182952	1170057S	1001182953
FORK PIN NO.		70021339	70022105	342327S		3423242		3423276	
JLG	642			•		•		•	
	943					•		•	
	1043					•		•	
	1055			•		•		•	
	1255				•		•		•
JLG Series	G5-18A	•	•						
	G6-42A S/N 0160037722 - AFTER			•		•		•	
	G9-43A S/N 0160037671 - AFTER			•		•		•	
	G10-43A			•		•		•	
	G10-55A S/N 0160037689 - AFTER			•		•		•	
	G12-55A S/N 0160037689 - AFTER			•		•		•	
	G15-44A							•	
SKYTRAK™	6036 S/N 0160069720 - Present, including 0160065792, 0160065798, 0160065824, 0160069383 & 0160069411			•		•		•	
	6042 S/N 0160069720 - Present, including 0160065792, 0160065798, 0160065824, 0160069383 & 0160069411			•		•		•	
	8042 S/N 0160069722 - Present, including 0160065791, 0160065796, 0160065825, 0160065826, 0160069336, 0160069359 & 0160069441			•		•		•	
	10042 S/N 0160069722 - Present, including 0160065791, 0160065796, 0160065825, 0160065826, 0160069336, 0160069359 & 0160069441			•		•		•	
	10054 S/N 0160069722 - Present, including 0160065791, 0160065796, 0160065825, 0160065826, 0160069336, 0160069359 & 0160069441			•		•		•	

* Used with Universal Quick Switch (Skid Steer) Coupler.

NOTES:

- Use only JLG approved attachments with proper material handler model/attachment load capacity charts displayed in the operator's cab.
- Never use your attachment as a work platform or personnel carrier.

Can't find the attachment you are looking for? Contact your JLG Aftermarket Parts representative at 1-877-JLG-LIFT or visit www.jlg.com.

Current Production Side-Tilt Carriages

Ordered through JLG Aftermarket Parts or with new machine orders

CARRIAGE SIZE		48 in.	48 in.	50 in.	50 in.	60 in.	60 in.	72 in.	72 in.
APPROX. WEIGHT		660 lb.	817 lb.	343 lb.	942 lb.	472 lb.	1022 lb.	677 lb.	1088 lb.
PART NO.		1001102331	1001104009	11700545	1001182951	10011019565	1001182952	11700575	1001182953
FORK PIN NO.		70021339	70022105	3423275		3423242		3423276	
SKYTRAK LEGACY	6036 S/N 0160031200 - 0160069719, excluding: 0160065792, 0160065798, 0160065824, 0160069383 & 0160069411			.		.		.	
	6042 S/N 0160031200 - 0160069719, excluding: 0160065792, 0160065798, 0160065824, 0160069383 & 0160069411			.		.		.	
	8042 S/N 0160031235 - 0160069721, excluding: 0160065791, 0160065796, 0160065825, 0160065826, 0160069336, 0160069359 & 0160069441			.		.		.	
	10042 S/N 0160031425 - 0160069721, excluding: 0160065791, 0160065796, 0160065825, 0160065826, 0160069336, 0160069359 & 0160069441			.		.		.	
	10054 S/N 0160031255 - 0160069721, excluding: 0160065791, 0160065796, 0160065825, 0160065826, 0160069336, 0160069359 & 0160069441			.		.		.	
LULI	644E-42 S/N 0160031500 - AFTER			.		.		.	
	944E-42 S/N 0160031500 - AFTER			.		.		.	
	1044C-54 SII S/N 0160037893 - AFTER			.		.		.	

Non-Current Production Side-Tilt Carriages

Ordered exclusively through JLG Aftermarket Parts

CARRIAGE SIZE		48 in.	48 in.	48 in.	48 in.	50 in.	50 in.	50 in.	60 in.	60 in.	66 in.	72 in.	72 in.	72 in.	74 in.	74 in.
APPROX. WEIGHT		640 lb.	763 lb.	700 lb.	607 lb.	678 lb.	844 lb.	343 lb.	1,047 lb.	472 lb.	820 lb.	800 lb.	948 lb.	677 lb.	920 lb.	1,028 lb.
PART NO.		7134400	91405101	91085058	1170046	7161300	48041	11700545	7134500	10011019565	91305016	7134600	91405079	11700575	48043	48003
FORK PIN NO.		7128772	91401303	90451058	(2)4040283	90451058	10223049	3423275	7128792	3423242	91301083	90551013	91401324	3423276	10124495	10116207
JLG	G5-19A				.											
	G6-23A				.											
	G6-42A S/N PRIOR TO 0160037722		.										.			
	G9-43A S/N PRIOR TO 0160037671		.										.			
	G10-55A S/N PRIOR TO 0160037689		.										.			
	G12-55A S/N PRIOR TO 0160037689		.										.			
	TF6-42		.										.			

NOTES:

- Use only JLG approved attachments with proper material handler model/attachment load capacity charts displayed in the operator's cab.
 - Never use your attachment as a work platform or personnel carrier.
- Can't find the attachment you are looking for? Contact your JLG Aftermarket Parts representative at 1-877-JLG-LIFT or visit www.jlg.com.

ATTACHMENTS

Non-Current Production Side-Tilt Carriages Ordered exclusively through JLG Aftermarket Parts

CARRIAGE SIZE	48 in.	48 in.	48 in.	48 in.	50 in.	50 in.	50 in.	60 in.	60 in.	66 in.	72 in.	72 in.	72 in.	74 in.	74 in.	
APPROX. WEIGHT	640 lb.	763 lb.	700 lb.	607 lb.	678 lb.	844 lb.	343 lb.	1,047 lb.	472 lb.	820 lb.	800 lb.	948 lb.	677 lb.	920 lb.	1,028 lb.	
PART NO.	7134400	91405101	91085058	1170046	7161300	48041	11700545	7134500	10011019565	91305016	7134600	91405079	11700575	48043	48003	
FORK PIN NO.	7128772	91401303	90451058	(2)4040283	90451058	10223049	3423275	7128792	3423242	91301083	90551013	91401324	3423276	10124495	10116207	
GRADALL	G6-42P S/N PRIOR TO 0160037689	.										.				
	G6-42P S/N 0160037689 - AFTER						.		.				.			
	522D/524D			.						.						
	534D-6			.						.						
	534D-9 S/N PRIOR TO 0160037689			.						.						
	534D-9 S/N 0160037689 - AFTER						.		.				.			
	534D-10 S/N PRIOR TO 0160037689			.												
	534D-10 S/N 0160037689 - AFTER						.		.					.		
	544D S/N PRIOR TO 0160037689			.							.					
	544D S/N 0160037689 - AFTER						.		.					.		
	534C-9			.							.					
	534C-10			.							.					
	544C			.							.					
SKYTRAK	6036 S/N PRIOR TO 0160031200	.						.			.					
	6042 S/N PRIOR TO 0160031200	.						.			.					
	8042 S/N PRIOR TO 0160031235	.						.			.					
	10042 S/N PRIOR TO 0160031425	.						.			.					
	10054 S/N PRIOR TO 0160031255	.						.			.					
	4266	.						.			.					
	4270	.						.			.					
	4290	.						.			.					
5028	.						.			.						

NOTES:

- Use only JLG approved attachments with proper material handler model/attachment load capacity charts displayed in the operator's cab.
 - Never use your attachment as a work platform or personnel carrier.
- Can't find the attachment you are looking for? Contact your JLG Aftermarket Parts representative at 1-877-JLG-LIFT or visit www.jlg.com.

Non-Current Production Side-Tilt Carriages
 Ordered exclusively through JLG Aftermarket Parts

CARRIAGE SIZE	48 in.	48 in.	48 in.	48 in.	50 in.	50 in.	50 in.	60 in.	60 in.	66 in.	72 in.	72 in.	72 in.	74 in.	74 in.	
APPROX. WEIGHT	640 lb.	763 lb.	700 lb.	607 lb.	678 lb.	844 lb.	343 lb.	1,047 lb.	472 lb.	820 lb.	800 lb.	948 lb.	677 lb.	920 lb.	1,028 lb.	
PART NO.	7134400	91405101	91085058	1170046	7161300	48041	11700545	7134500	10011019565	91305016	7134600	91405079	11700575	48043	48003	
FORK PIN NO.	7128772	91401303	90451058	(2)4040283	90451058	10223049	3423275	7128792	3423242	91301083	90551013	91401324	3423276	10124495	10116207	
LULL	644E-42 S/N PRIOR TO 0160031500	•			•			•			•					
	944E-42 S/N PRIOR TO 0160031500	•			•			•			•					
	1044C-54 SII S/N PRIOR TO 0160037893					•								•		
	644B-37					•									•	
	644B-42					•									•	
	844C-42					•									•	
	1044C-42/1044C-54					•									•	
	6K-37					•										•
	6K-42					•										•
	8K-42					•										•
	10K-42/10K-54					•									•	
	644D-34					•										•

To order go to Discount-Equipment.com

NOTES:

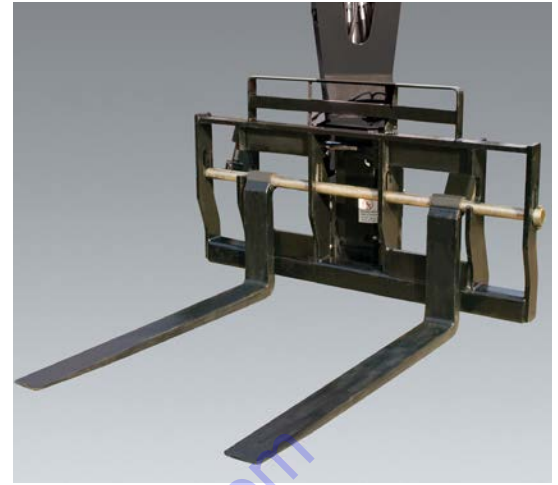
- Use only JLG approved attachments with proper material handler model/attachment load capacity charts displayed in the operator's cab.
 - Never use your attachment as a work platform or personnel carrier.
- Can't find the attachment you are looking for? Contact your JLG Aftermarket Parts representative at 1-877-JLG-LIFT or visit www.jlg.com.

Swing Carriage

The swing carriage permits the operator to maneuver loads through openings and tight spaces like windows or scaffolding by swinging the carriage to the right or left.

Features

- Right and left 90° swing option
- Right and left 180° swing option
- Standard up-and-down tilt on horizontal plane



Current Production Swing Carriages

Ordered through JLG Aftermarket Parts or with new machine orders

CARRIAGE SIZE		72 in.	72 in.
APPROX. WEIGHT		1,154 lb.	1,868 lb.
CARRIAGE SWING		90°	180°
PART NO.		1001095418S	1001104992
FORK PIN NO.		3423276	70020027
JLG	642	•	
	943	•	
	1043	•	
	1055	•	•
	1255	•	•
JLG SERIES	G6-42A S/N 0160037722 - AFTER	•	
	G9-43A S/N 0160037671 - AFTER	•	
	G10-43A	•	
	G10-55A S/N 0160037689 - AFTER	•	•
	G12-55A S/N 0160037689 - AFTER	•	•
	G15-44A	•	
SKYTRAK T4F	6036 S/N 0160069720 - Present, including 0160065792, 0160065798, 0160065824, 0160069383 & 0160069411	•	
	6042 S/N 0160069720 - Present, including 0160065792, 0160065798, 0160065824, 0160069383 & 0160069411	•	
	8042 S/N 0160069722 - Present, including 0160065791, 0160065796, 0160065825, 0160065826, 0160069336, 0160069359 & 0160069441	•	
	10042 S/N 0160069722 - Present, including 0160065791, 0160065796, 0160065825, 0160065826, 0160069336, 0160069359 & 0160069441	•	
	10054 S/N 0160069722 - Present, including 0160065791, 0160065796, 0160065825, 0160065826, 0160069336, 0160069359 & 0160069441	•	

Current Production Swing Carriages

Ordered through JLG Aftermarket Parts or with new machine orders

CARRIAGE SIZE		72 in.	72 in.
APPROX. WEIGHT		1,154 lb.	1,868 lb.
CARRIAGE SWING		90°	180°
PART NO.		1001095418S	1001104992
FORK PIN NO.		3423276	70020027
SKYTRAK LEGACY	6036 S/N 0160031200 - 0160069719, excluding: 0160065792, 0160065798, 0160065824, 0160069383 & 0160069411	•	
	6042 S/N 0160031200 - 0160069719, excluding: 0160065792, 0160065798, 0160065824, 0160069383 & 0160069411	•	
	8042 S/N 0160031235 - 0160069721, excluding: 0160065791, 0160065796, 0160065825, 0160065826, 0160069336, 0160069359 & 0160069441	•	
	10042 S/N 0160031425 - 0160069721, excluding: 0160065791, 0160065796, 0160065825, 0160065826, 0160069336, 0160069359 & 0160069441	•	
	10054 S/N 0160031255 - 0160069721, excluding: 0160065791, 0160065796, 0160065825, 0160065826, 0160069336, 0160069359 & 0160069441	•	
LULL	644E-42 S/N 0160031500 - AFTER	•	
	944E-42 S/N 0160031500 - AFTER	•	
	1044C-54 SII S/N 0160037893 - AFTER	•	

NOTES:

- Use only JLG approved attachments with proper material handler model/attachment load capacity charts displayed in the operator's cab.
 - Never use your attachment as a work platform or personnel carrier.
- Can't find the attachment you are looking for? Contact your JLG Aftermarket Parts representative at 1-877-JLG-LIFT or visit www.jlg.com.

Non-Current Production Swing Carriages
Ordered through JLG Aftermarket Parts

CARRIAGE SIZE	52 in.	72 in.	72 in.	72 in.	72 in.	72 in.	72 in.	72 in.	72 in.	72 in.
APPROX. WEIGHT	959 lb.	914 lb.	1,154 lb.	1,440 lb.	1,230 lb.	1,252 lb.	1,810 lb.	2,112 lb.	1,868 lb.	
CARRIAGE SWING	90°	90°	90°	90°	100°	100°	180°	180°	180°	
PART NO.	7125900	7125800S	1001095418S	1100532	90455044	91405075	91553076	91563146	1001104992	
FORK PIN NO.	7128782	90551013	3423276	7029710	90551013	91401324	91144205	70020027	70020027	
JLG	G6-42A S/N PRIOR TO 0160037722						•			
	G9-43A S/N PRIOR TO 0160037671						•			
	G10-55A S/N PRIOR TO 0160037689						•	•		
	G12-55A S/N PRIOR TO 0160037689						•	•		
	TF6-42						•			
GRADALL	G6-42P S/N PRIOR TO 0160037689						•			
	G6-42P S/N 0160037689 - AFTER			•						
	522D/524D						•			
	534D-6						•			
	534D-9 S/N PRIOR TO 0160037689						•			
	534D-9 S/N 0160037689 - AFTER			•						
	534D-10 S/N PRIOR TO 0160037689						•	•		
	534D-10 S/N 0160037689 - AFTER			•						•
	544D S/N PRIOR TO 0160037689						•	•		
	544D S/N 0160037689 - AFTER			•						•
	534C-9						•			
	534C-10						•			
	544C						•			
SKYTRAK	6036 S/N PRIOR TO 0160031200	•	•							
	6042 S/N PRIOR TO 0160031200	•	•							
	8042 S/N PRIOR TO 0160031235	•	•							
	10042 S/N PRIOR TO 0160031425	•	•							
	10054 S/N PRIOR TO 0160031255	•	•							
	4266	•	•							
	4270	•	•							
	4290	•	•							
5028	•	•								
LULL	644E-42 S/N PRIOR TO 0160031500	•	•							
	944E-42 S/N PRIOR TO 0160031500	•	•							
	1044C-54 SII S/N PRIOR TO 0160037893				•					

NOTES:

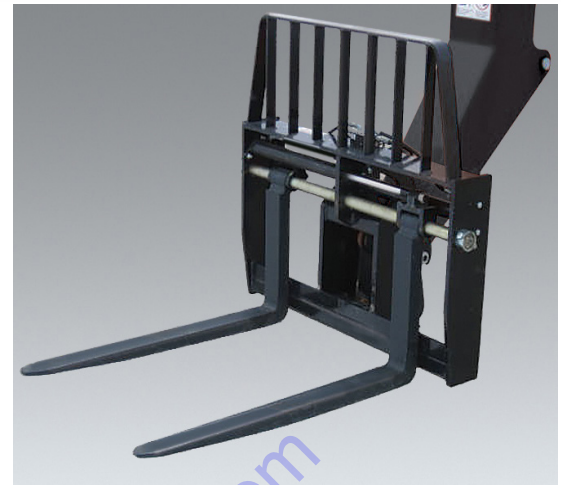
- Use only JLG approved attachments with proper material handler model/attachment load capacity charts displayed in the operator's cab.
 - Never use your attachment as a work platform or personnel carrier.
- Can't find the attachment you are looking for? Contact your JLG Aftermarket Parts representative at 1-877-JLG-LIFT or visit www.jlg.com.

Dual Fork Positioning Carriage

The dual fork positioning carriage allows the operator to adjust the width between the forks without leaving the cab.

Features

- Dual fork positioning carriages require auxiliary hydraulics
- Standard up-and-down tilt on horizontal plane
- Dual Fork Positioning Carriage is not compatible with Fork Mounted Attachments.



Current Production Dual Fork Positioning Carriages

Ordered through JLG Aftermarket Parts or with new machine orders

CARRIAGE SIZE		50 in.	50 in.
APPROX. WEIGHT		1,090 lb.	1,202 lb.
INCLUDED FORK LENGTH		48 in.	48 in.
PART NO.		7301295S	100118921IS
FORK PIN NO.		90451058	
JLG	642	•	
	943	•	
	1043	•	
	1055	•	
	1255		•
JLG SERIES	G-42A S/N 016003772-AFTER	•	
	G-9-43A S/N 0160037671-AFTER	•	
	G10-43A	•	
	G10-55A S/N 0160037689 - AFTER	•	
	G12-55A S/N 0160037689-AFTER	•	
	G15-44A	•	
SKYTRAK™	6036 S/N 0160069720 - Present, including 0160065792, 0160065798, 0160065824, 0160069383 & 0160069411	•	
	6042 S/N 0160069720 - Present, including 0160065792, 0160065798, 0160065824, 0160069383 & 0160069411	•	
	8042 S/N 0160069722 - Present, including 0160065791, 0160065796, 0160065825, 0160065826, 0160069336, 0160069359 & 0160069441	•	
	10042 S/N 0160069722 - Present, including 0160065791, 0160065796, 0160065825, 0160065826, 0160069336, 0160069359 & 0160069441	•	
	10054 S/N 0160069722 - Present, including 0160065791, 0160065796, 0160065825, 0160065826, 0160069336, 0160069359 & 0160069441	•	
SKYTRAK LEGACY	6036 S/N 0160031200 - 0160069719, excluding: 0160065792, 0160065798, 0160065824, 0160069383 & 0160069411	•	
	6042 S/N 0160031200 - 0160069719, excluding: 0160065792, 0160065798, 0160065824, 0160069383 & 0160069411	•	
	8042 S/N 0160031235 - 0160069721, excluding: 0160065791, 0160065796, 0160065825, 0160065826, 0160069336, 0160069359 & 0160069441	•	
	10042 S/N 0160031425 - 0160069721, excluding: 0160065791, 0160065796, 0160065825, 0160065826, 0160069336, 0160069359 & 0160069441	•	

Current Production Dual Fork Positioning Carriages

Ordered through JLG Aftermarket Parts or with new machine orders

CARRIAGE SIZE		50 in.	50 in.
APPROX. WEIGHT		1,090 lb.	1,202 lb.
INCLUDED FORK LENGTH		48 in.	48 in.
PART NO.		7301295S	100118921IS
FORK PIN NO.		90451058	
SKYTRAK LEGACY	10054 S/N 0160031255 - 0160069721, excluding 0160065791, 0160065796, 0160065825, 0160065826, 0160069336, 0160069359 & 0160069441	•	
	644E-42 S/N PRIOR TO 0160031500	•	
LULL	944E-42 S/N PRIOR TO 0160031500	•	
	1044C-54 SII S/N PRIOR TO 0160037893	•	

Non-Current Production Dual Fork Positioning Carriages

Ordered through JLG Aftermarket Parts

CARRIAGE SIZE		50 in.	50 in.
APPROX. WEIGHT		1,000 lb.	1,090 lb.
INCLUDED FORK LENGTH		42 in.	48 in.
PART NO.		1044804S	7301295S
FORK PIN NO.		1016568S	90451058
LULL	644B-37		
	644B-42		
	844C-42		
	1044C-42	•	
	1044C-54	•	
	644E-42 S/N PRIOR TO 0160031500		•
	944E-42 S/N PRIOR TO 0160031500		•
	1044C-54 SII S/N PRIOR TO 0160037893	•	

NOTES:

- Use only JLG approved attachments with proper material handler model/attachment load capacity charts displayed in the operator's cab.
- Never use your attachment as a work platform or personnel carrier.

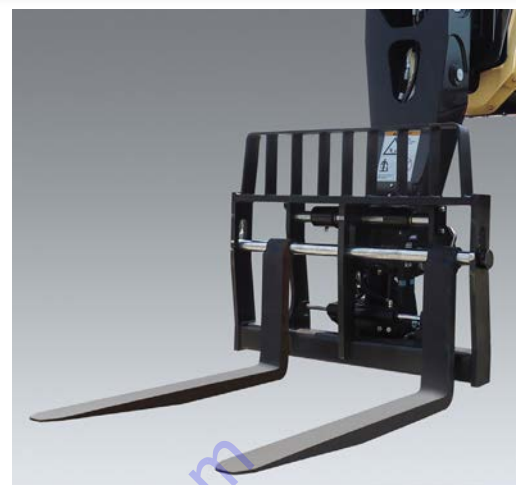
Can't find the attachment you are looking for? Contact your JLG Aftermarket Parts representative at 1-877-JLG-LIFT or visit www.jlg.com.

Side-Shift Carriage

The side-shift carriage allows the operator to move the load left or right for precise placement.

Features

- Side-shift carriages require auxiliary hydraulics
- Standard up-and-down tilt on horizontal plane



Current Production Side-Shift Carriages

Ordered through JLG Aftermarket Parts or with new machine orders

CARRIAGE SIZE		48 in.	50 in.	50 in.
APPROX. WEIGHT		768 lb.	898 lb.	930 lb.
PART NO.		1001104025*	1001193799	1001142790
FORK PIN NO.		70022105	N/A	N/A
JLG	642			•
	943			•
	1043			•
	1055			•
	1255			•
JLG SERIES	G5-18A	•		
	G6-42A S/N 0160037722 - AFTER			•
	G9-43A S/N 0160037671 - AFTER			•
	G10-43A			•
	G10-55A S/N 0160037689 - AFTER			•
	G12-55A S/N 0160037689 - AFTER			•
	G15-44A		•	
SKYTRAK T4F	6036 S/N 0160069720 - Present, including 0160065792, 0160065798, 0160065824, 0160069383 & 0160069411			•
	6042 S/N 0160069720 - Present, including 0160065792, 0160065798, 0160065824, 0160069383 & 0160069411			•
	8042 S/N 0160069722 - Present, including 0160065791, 0160065796, 0160065825, 0160065826, 0160069336, 0160069359 & 0160069441			•
	10042 S/N 0160069722 - Present, including 0160065791, 0160065796, 0160065825, 0160065826, 0160069336, 0160069359 & 0160069441			•
	10054 S/N 0160069722 - Present, including 0160065791, 0160065796, 0160065825, 0160065826, 0160069336, 0160069359 & 0160069441			•
SKYTRAK LEGACY	6036 S/N 0160031200 - 0160069719, excluding: 0160065792, 0160065798, 0160065824, 0160069383 & 0160069411			•
	6042 S/N 0160031200 - 0160069719, excluding: 0160065792, 0160065798, 0160065824, 0160069383 & 0160069411			•

Current Production Side-Shift Carriages

Ordered through JLG Aftermarket Parts or with new machine orders

CARRIAGE SIZE		48 in.	50 in.	50 in.
APPROX. WEIGHT		768 lb.	898 lb.	930 lb.
PART NO.		1001104025*	1001193799	1001142790
FORK PIN NO.		70022105	N/A	N/A
SKYTRAK LEGACY	8042 S/N 0160031235 - 0160069721, excluding: 0160065791, 0160065796, 0160065825, 0160065826, 0160069336, 0160069359 & 0160069441			•
	10042 S/N 0160031425 - 0160069721, excluding: 0160065791, 0160065796, 0160065825, 0160065826, 0160069336, 0160069359 & 0160069441			•
	10054 S/N 0160031255 - 0160069721, excluding: 0160065791, 0160065796, 0160065825, 0160065826, 0160069336, 0160069359 & 0160069441			•
LULL	644E-42 S/N 0160037793 - Present			•
	944E-42 S/N 0160037973 - Present			•
	1044C-54 SII S/N 0160037893 - Present			•

Non-Current Production Side-Shift Carriages

Ordered through JLG Aftermarket Parts

CARRIAGE SIZE		50 in.
APPROX. WEIGHT		905 lb.
PART NO.		1170002
FORK PIN NO.		7028136
JLG	G5-19A	•
	619A	•
	G6-23A	•
	723A	•

*Used with Universal Quick Switch (Skid Steer) Coupler.

NOTES:

- Use only JLG approved attachments with proper material handler model/attachment load capacity charts displayed in the operator's cab.
- Never use your attachment as a work platform or personnel carrier.

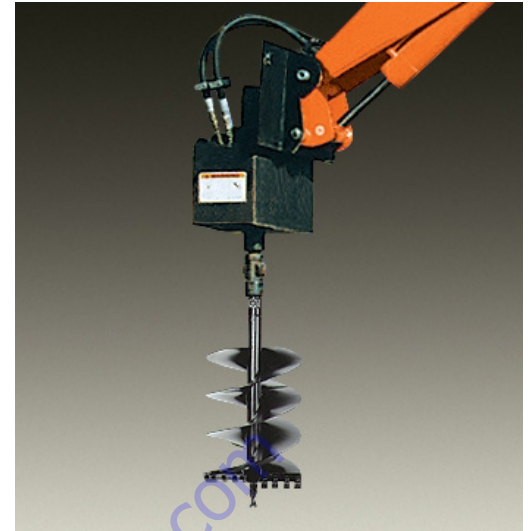
Can't find the attachment you are looking for? Contact your JLG Aftermarket Parts representative at 1-877-JLG-LIFT or visit www.jlg.com.

Auger

An auger expands the functionality of your telehandler. Not only can the machine go up in the air but also down into the ground. With various auger bit sizes available, the operator can be precise in choosing one to best fit the task at hand.

Features

- Auger Drive Motor Part No. 1001092816 & Adapter Part No. 6043600 Required for Skytrak and Lull E-Series applications
- Auger Drive Motor Part No. 51012 Required for Lull C-Series applications



Non-Current Production Auger Bits
Ordered exclusively through JLG Aftermarket Parts

DIAMETER		6 in.	9 in.	12 in.	15 in.	18 in.	20 in.	24 in.	8 in.	12 in.	16 in.	18 in.
DEPTH		50 in.	50 in.	50 in.	50 in.	50 in.	50 in.	50 in.	60 in.	60 in.	60 in.	60 in.
PART NO.		8866415	8866416	8866417	8866418	8866419	8866558	8866420	10166297	10166298	10166994	10166299
SKYTRAK	6036 S/N PRIOR TO 0160037788	•	•	•	•	•	•	•				
	6042 S/N PRIOR TO 0160037788	•	•	•	•	•	•	•				
	8042 S/N PRIOR TO 0160037798	•	•	•	•	•	•	•				
	10042 S/N PRIOR TO 0160037797	•	•	•	•	•	•	•				
	10054 S/N PRIOR TO 0160037792	•	•	•	•	•	•	•				
LULL	644E-42 S/N PRIOR TO 0160031500	•	•	•	•	•	•	•				
	944E-42 S/N PRIOR TO 0160031500	•	•	•	•	•	•	•				
	1044C-54 SII S/N PRIOR TO 0160037893								•	•	•	•

Non-Current Production Auger Extensions
Ordered exclusively through JLG Aftermarket Parts

LENGTH		14 in.	24 in.
PART NO.		8866422	8866423
SKYTRAK	6036 S/N PRIOR TO 0160037788	•	•
	6042 S/N PRIOR TO 0160037788	•	•
	8042 S/N PRIOR TO 0160037798	•	•
	10042 S/N PRIOR TO 0160037797	•	•
	10054 S/N PRIOR TO 0160037792	•	•
LULL	644E-42 S/N PRIOR TO 0160031500	•	•
	944E-42 S/N PRIOR TO 0160031500	•	•

NOTES:

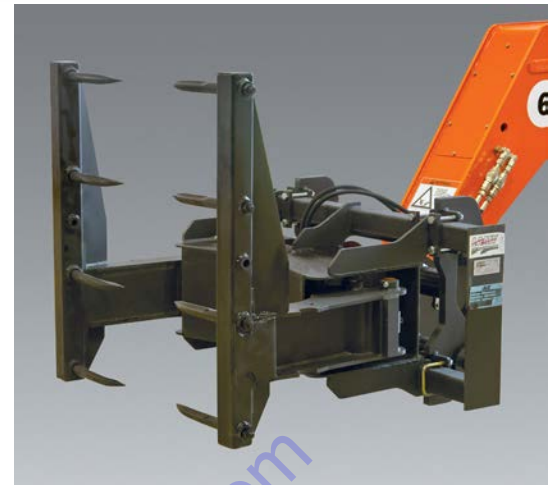
- Use only JLG approved attachments with proper material handler model/attachment load capacity charts displayed in the operator's cab.
 - Never use your attachment as a work platform or personnel carrier.
- Can't find the attachment you are looking for? Contact your JLG Aftermarket Parts representative at 1-877-JLG-LIFT or visit www.jlg.com.

Bale Clamp

The bale clamp attachment is used in the agriculture industry, making it easy to maneuver hay or straw bales. The bale clamps can grab bales that are approximately 79 inches in diameter.

Features

- Spike-style bale clamp available (shown)
- Tube-style bale clamp available



Non-Current Production Bale Clamps
 Ordered exclusively through JLG Aftermarket Parts

STYLE		Tube	Spike
PART NO.		0240117	0240118
JLG	619A	•	•
	723A	•	•

STYLE		Spike to Tube	Tube to Spike
PART NO.		0240117	0240118
JLG	619A	•	•
	723A	•	•

To order go to Discount-Equipment.com

NOTES:

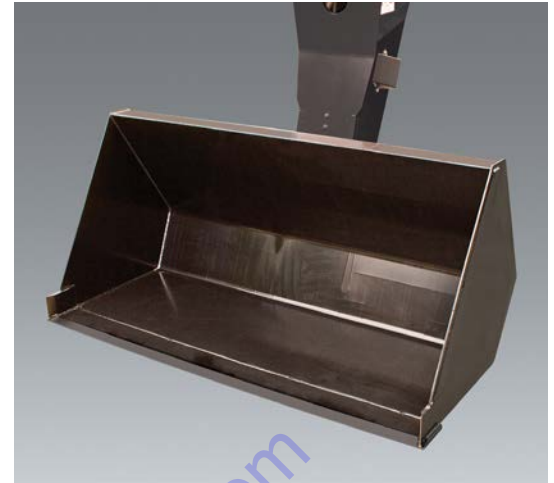
- Use only JLG approved attachments with proper material handler model/attachment load capacity charts displayed in the operator's cab.
 - Never use your attachment as a work platform or personnel carrier.
- Can't find the attachment you are looking for? Contact your JLG Aftermarket Parts representative at 1-877-JLG-LIFT or visit www.jlg.com.

Material Bucket

Use the material bucket to scoop and carry loose material and debris like gravel or dirt. The material bucket can also be used for clean up around the job site. Material buckets are not designed for digging.

Features

- Available in different widths and capacities for various jobsite requirements
- Bucket teeth kits available for 0930008, 0930009, 0930015 and 0930016 material buckets (purchase part number 1001094612)



Current Production Material Buckets

Ordered through JLG Aftermarket Parts or with new machine orders

BUCKET WIDTH		72 in.	72 in.	73 in.	96 in.	102 in.
CAPACITY		1.0 cu. yd.	1.7 cu. yd.	1.0 cu. yd.	1.5 cu. yd.	2.0 cu. yd.
APPROX. WEIGHT		733 lb.	838 lb.	710 lb.	899 lb.	1,089 lb.
PART NO.		1001100822	1001102323*	1001102324*	1001100823	1001100824
JLG	642	•			•	•
	943	•			•	•
	1043	•			•	•
	1055	•			•	•
	1255	•			•	•
JLG G-SERIES	G5-18A		•	•		
	G6-42A S/N 0160037722 - AFTER	•			•	•
	G9-43A S/N 0160037671 - AFTER	•			•	•
	G10-43A	•			•	•
	G10-55A S/N 0160037689 - AFTER	•			•	•
	G12-55A S/N 0160037689 - AFTER	•			•	•
	G15-44A	•			•	•
SKYTRAK™	6036 S/N 0160069720 - Present, including 0160065792, 0160065798, 0160065824, 0160069383 & 0160069411	•			•	•
	6042 S/N 0160069720 - Present, including 0160065792, 0160065798, 0160065824, 0160069383 & 0160069411	•			•	•
	8042 S/N 0160069722 - Present, including 0160065791, 0160065796, 0160065825, 0160065826, 0160069336, 0160069359 & 0160069441	•			•	•
	10042 S/N 0160069722 - Present, including 0160065791, 0160065796, 0160065825, 0160065826, 0160069336, 0160069359 & 0160069441	•			•	•
	10054 S/N 0160069722 - Present, including 0160065791, 0160065796, 0160065825, 0160065826, 0160069336, 0160069359 & 0160069441	•			•	•

* Replacement cutting edge not available separately

NOTES:

- Use only JLG approved attachments with proper material handler model/attachment load capacity charts displayed in the operator's cab.
 - Never use your attachment as a work platform or personnel carrier.
- Can't find the attachment you are looking for? Contact your JLG Aftermarket Parts representative at 1-877-JLG-LIFT or visit www.jlg.com.

Current Production Material Buckets

Ordered through JLG Aftermarket Parts or with new machine orders

BUCKET WIDTH		72 in.	72 in.	73 in.	96 in.	102 in.
CAPACITY		1.0 cu. yd.	1.7 cu. yd.	1.0 cu. yd.	1.5 cu. yd.	2.0 cu. yd.
APPROX. WEIGHT		733 lb.	838 lb.	710 lb.	899 lb.	1,089 lb.
PART NO.		1001100822	1001102323*	1001102324*	1001100823	1001100824
SKYTRAK LEGACY	6036 S/N 0160031200 - 0160069719, excluding: 0160065792, 0160065798, 0160065824, 0160069383 & 0160069411
	6042 S/N 0160031200 - 0160069719, excluding: 0160065792, 0160065798, 0160065824, 0160069383 & 0160069411
	8042 S/N 0160031235 - 0160069721, excluding: 0160065791, 0160065796, 0160065825, 0160065826, 0160069336, 0160069359 & 0160069441
	10042 S/N 0160031425 - 0160069721, excluding: 0160065791, 0160065796, 0160065825, 0160065826, 0160069336, 0160069359 & 0160069441
	10054 S/N 0160031255 - 0160069721, excluding: 0160065791, 0160065796, 0160065825, 0160065826, 0160069336, 0160069359 & 0160069441
LULL	644E-42 S/N 0160031500 - AFTER
	944E-42 S/N 0160031500 - AFTER
	1044C-54 SII S/N 0160037893 - AFTER

Non - Current Production Material Buckets

Ordered through JLG Aftermarket Parts

BUCKET WIDTH	60 in.	60 in.	72 in.	74 in.	74 in.	83 in.	83 in.	96 in.	96 in.	96 in.	96 in.	96 in.	102 in.	102 in.
CAPACITY	.75 cu yd.	.75 cu yd.	1.0 cu. yd.	1.25 cu. yd.	1.25 cu. yd.	1.05 cu. yd.	1.96 cu. yd.	1.18 cu. yd.	1.25 cu. yd.	1.25 cu. yd.	1.5 cu. yd.	2.35 cu. yd.	1.25 cu. yd.	2 cu. yd.
APPROX. WEIGHT	465 lb.	500 lb.	733 lb.	643 lb.	675 lb.	639 lb.	940 lb.	712 lb.	795 lb.	540 lb.	899 lb.	1,041 lb.	720 lb.	1,089 lb.
PART NO.	90455049	91405054	1001100822	90555020	91405055	0930008	0930009	0930015	7110744	1101435	1001100823	0930016	91405071	1001100824
JLG	G5-19A					.	.							
	619A						
	G6-23A							.				.		
	723A						.					.		
	G6-42A S/N PRIOR TO 0160037722		.		.								.	
	G9-43A S/N PRIOR TO 0160037671		.		.								.	
	G10-55A S/N PRIOR TO 0160037689		.		.								.	
	G12-55A S/N PRIOR TO 0160037689		.		.								.	
	TF6-42		.		.								.	
GRADALL	G6-42P S/N PRIOR TO 0160037689		.		.								.	
	G6-42P S/N 0160037689 - AFTER			.							.			.
	522D/524D	.			.									
	534D-6	.			.									
	534D-9 S/N PRIOR TO 0160037689	.			.									

* Replacement cutting edge not available separately

NOTES:

- Use only JLG approved attachments with proper material handler model/attachment load capacity charts displayed in the operator's cab.
 - Never use your attachment as a work platform or personnel carrier.
- Can't find the attachment you are looking for? Contact your JLG Aftermarket Parts representative at 1-877-JLG-LIFT or visit www.jlg.com.

Non - Current Production Material Buckets
 Ordered through JLG Aftermarket Parts

BUCKET WIDTH	60 in.	60 in.	72 in.	74 in.	74 in.	83 in.	83 in.	96 in.	96 in.	96 in.	96 in.	96 in.	102 in.	102 in.
CAPACITY	.75 cu yd.	.75 cu yd.	1.0 cu yd.	1.25 cu yd.	1.25 cu yd.	1.05 cu yd.	1.96 cu yd.	1.18 cu yd.	1.25 cu yd.	1.25 cu yd.	1.5 cu yd.	2.35 cu yd.	1.25 cu yd.	2 cu yd.
APPROX. WEIGHT	465 lb.	500 lb.	733 lb.	643 lb.	675 lb.	639 lb.	940 lb.	712 lb.	795 lb.	540 lb.	899 lb.	1,041 lb.	720 lb.	1,089 lb.
PART NO.	90455049	91405054	1001100822	90555020	91405055	0930008	0930009	0930015	7110744	1101435	1001100823	0930016	91405071	1001100824
GRADALL	534D-9 S/N 0160037689 - AFTER		•								•			•
	534D-10 S/N PRIOR TO 0160037689	•		•										
	534D-10 S/N 0160037689 - AFTER			•							•			•
	544D S/N PRIOR TO 0160037689	•			•									
	544D S/N 0160037689 - AFTER			•							•			•
	534C-9	•			•									
	534C-10	•			•									
	544C	•			•									
SKYTRAK	6036 S/N PRIOR TO 0160031200									•				
	6042 S/N PRIOR TO 0160031200									•				
	8042 S/N PRIOR TO 0160031235									•				
	10042 S/N PRIOR TO 0160031425									•				
	10054 S/N PRIOR TO 0160031255									•				
	4266									•				
	4270									•				
	4290									•				
	5028									•				
LULL	644E-42 S/N PRIOR TO 0160031500									•				
	944E-42 S/N PRIOR TO 0160031500									•				
	1044C-54 SII S/N PRIOR TO 0160037893										•			
	644B-37										•			
	644B-42										•			
	844C-42										•			
	1044C-42/1044C-54										•			
	6K-37										•			
	6K-42										•			
	8K-42										•			
	10K-42/10K-54										•			
	644D-34										•			

* Replacement cutting edge not available separately

NOTES:

- Use only JLG approved attachments with proper material handler model/attachment load capacity charts displayed in the operator's cab.
 - Never use your attachment as a work platform or personnel carrier.
- Can't find the attachment you are looking for? Contact your JLG Aftermarket Parts representative at 1-877-JLG-LIFT or visit www.jlg.com.

4-in-1 Bucket

This bucket saves you time and money. The 4-in-1 bucket can be used for loading, leveling, bottom dumping or as a grapple bucket. 4-in-1 buckets are not designed for digging.

Non-Current Production 4-in-1 Buckets
 Ordered exclusively through JLG Aftermarket Parts

BUCKET SIZE		81 in.	96 in.
CAPACITY		.78 cu. yd.	1.3 cu. yd.
APPROX. WEIGHT		1,503 lb.	1,806 lb.
PART NO.		0930006	0930003
JLG	G5-19A	•	•
	619A	•	•
	G6-23A		•
	723A		•



Fork Mounted Bucket

The fork mounted bucket provides the versatility of a bucket with the convenience of not needing to remove forks and carriages.

Features

- Cost effective alternative to a coupler mounted bucket
- For use with approved JLG telehandlers

Specifications

- Maximum capacity: 2000 lbs
- Maximum weight: 705 lbs
- 60" bucket
- Bucket width: 1 cubic yd
- 48" forks (ITA - hook mounted)
- Distance to center of gravity: 22.5 in.



MODEL		S/N BREAK	JLG PART NUMBER
JLG	642	ALL	1001195970
	943		
	1043		
	1055		
	1255		

NOTES:

- Use only JLG approved attachments with proper material handler model/attachment load capacity charts displayed in the operator's cab.
 - Never use your attachment as a work platform or personnel carrier.
- Can't find the attachment you are looking for? Contact your JLG Aftermarket Parts representative at 1-877-JLG-LIFT or visit www.jlg.com.

Grapple Bucket

The grapple bucket uses hydraulic arms to secure bulky loads and materials. This feature is useful when cleaning up natural disaster sites and day-to-day job site scraps. Grapple buckets are not designed for digging.

Features

- Independent grapple arms require auxiliary hydraulics (except 619A, 723A, G5-19A and G6-23A)



Current Production Grapple Buckets

Ordered through JLG Aftermarket Parts or with new machine orders

BUCKET SIZE		72 in.	96 in.
CAPACITY		1 cu. yd.	1.75 cu. yd.
APPROX. WEIGHT		1,096 lb.	1,514 lb.
PART NO.		1001099831	0930020
JLG	642		•
	943		•
	1043		•
	1055		•
	1255		•
JLG SERIES	G5-18A	•	
	619A		
	723A		
	G6-42A S/N 0160037722 - AFTER		•
	G9-43A S/N 0160037671 - AFTER		•
	G10-43A		•
	G10-55A S/N 0160037689 - AFTER		•
	G12-55A S/N 0160037689 - AFTER		•
	G15-44A		•
	SKYTRAK™	6036 S/N 0160069720 - Present, including 0160065792, 0160065798, 0160065824, 0160069383 & 0160069411	
6042 S/N 0160069720 - Present, including 0160065792, 0160065798, 0160065824, 0160069383 & 0160069411			•
8042 S/N 0160069722 - Present, including 0160065791, 0160065796, 0160065825, 0160065826, 0160069336, 0160069359 & 0160069441			•
10042 S/N 0160069722 - Present, including 0160065791, 0160065796, 0160065825, 0160065826, 0160069336, 0160069359 & 0160069441			•
10054 S/N 0160069722 - Present, including 0160065791, 0160065796, 0160065825, 0160065826, 0160069336, 0160069359 & 0160069441			•
SKYTRAK LEGACY	6036 S/N 0160031200 - 0160069719, excluding: 0160065792, 0160065798, 0160065824, 0160069383 & 0160069411		•
	6042 S/N 0160031200 - 0160069719, excluding: 0160065792, 0160065798, 0160065824, 0160069383 & 0160069411		•
	8042 0160031235 - 0160069721, excluding: 0160065791, 0160065796, 0160065825, 0160065826, 0160069336, 0160069359 & 0160069441		•

Current Production Grapple Buckets

Ordered through JLG Aftermarket Parts or with new machine orders

BUCKET SIZE		72 in.	96 in.
CAPACITY		1 cu. yd.	1.75 cu. yd.
APPROX. WEIGHT		1,096 lb.	1,514 lb.
PART NO.		1001099831	0930020
SKYTRAK LEGACY	10042 0160031425 - 0160069721, excluding: 0160065791, 0160065796, 0160065825, 0160065826, 0160069336, 0160069359 & 0160069441		•
	10054 0160031255 - 0160069721, excluding: 0160065791, 0160065796, 0160065825, 0160065826, 0160069336, 0160069359 & 0160069441		•
LULL	644E-42 S/N 0160031500 - AFTER		•
	944E-42 S/N 0160031500 - AFTER		•
	1044C-54 SII S/N 0160037893 - AFTER		•

Non-Current Production Grapple Buckets

Ordered exclusively through JLG Aftermarket Parts

BUCKET SIZE		83 in.	96 in.	96 in.	96 in.
CAPACITY		1.96 cu. yd.	1.75 cu. yd.	2.35 cu. yd.	1.75 cu. yd.
APPROX. WEIGHT		1,403 lb.	1,740 lb.	1,554 lb.	1,514 lb.
PART NO.		0930005	0930021S*	0930004	0930020
JLG	G5-19A	•		•	
	G6-23A			•	
	G6-42A S/N PRIOR TO 0160037722		•		
	G9-43A S/N PRIOR TO 0160037671		•		
	G10-55A S/N PRIOR TO 0160037689		•		
	G12-55A S/N PRIOR TO 0160037689		•		
GRADALL	G6-42P S/N 0160037689 - AFTER				•
	534D-9 S/N 0160037689 - AFTER				•
	534D-10 S/N 0160037689 - AFTER				•
	544D S/N 0160037689 - AFTER				•

* Includes Load Chart

NOTES:

- Use only JLG approved attachments with proper material handler model/attachment load capacity charts displayed in the operator's cab.
- Never use your attachment as a work platform or personnel carrier.

Can't find the attachment you are looking for? Contact your JLG Aftermarket Parts representative at 1-877-JLG-LIFT or visit www.jlg.com.

Concrete Bucket

The concrete bucket can increase your job site efficiency by reducing the amount of time and personnel that are required to get concrete materials to elevated sites.

Features

- Approx. 36 in. X 36 in. top opening
- Manual and auxiliary hydraulic options available
- Discharge hose options



Non-Current Production Concrete Buckets Ordered exclusively through JLG Aftermarket Parts

CAPACITY		.5 cubic yard	1 cubic yard	.5 cubic yard	1 cubic yard
CONTROLS		Manual	Manual	Hydraulic	Hydraulic
TYPE		Quick Switch Mount	Quick Switch Mount	Quick Switch Mount	Quick Switch Mount
PART NO.		8866444	8866443	8866442	8866441
SKYTRAK	6036 S/N PRIOR TO 0160037788	•		•	
	6042 S/N PRIOR TO 0160037788	•		•	
	8042 S/N PRIOR TO 0160037798	•		•	
	10042 S/N PRIOR TO 0160037797	•	•	•	•
	10054 S/N PRIOR TO 0160037792	•	•	•	•
LULL	644E-42 S/N PRIOR TO 0160037793	•		•	
	944E-42 S/N PRIOR TO 0160037793	•		•	

Non-Current Production Concrete Bucket Discharge Hoses Ordered exclusively through JLG Aftermarket Parts

HOSE LENGTH		4 inch	4 inch w/ gate	6 inch	8 inch	Rubber side discharge
PART NO.		8866444	8866443	8866442	8866441	8866441
SKYTRAK	6036 S/N PRIOR TO 0160037788	•	•	•	•	•
	6042 S/N PRIOR TO 0160037788	•	•	•	•	•
	8042 S/N PRIOR TO 0160037798	•	•	•	•	•
	10042 S/N PRIOR TO 0160037797	•	•	•	•	•
	10054 S/N PRIOR TO 0160037792	•	•	•	•	•
LULL	644E-42 S/N PRIOR TO 0160031500	•	•	•	•	•
	944E-42 S/N PRIOR TO 0160031500	•	•	•	•	•

NOTES:

- Use only JLG approved attachments with proper material handler model/attachment load capacity charts displayed in the operator's cab.
 - Never use your attachment as a work platform or personnel carrier.
- Can't find the attachment you are looking for? Contact your JLG Aftermarket Parts representative at 1-877-JLG-LIFT or visit www.jlg.com.

Coupler Mounted Lifting Hook

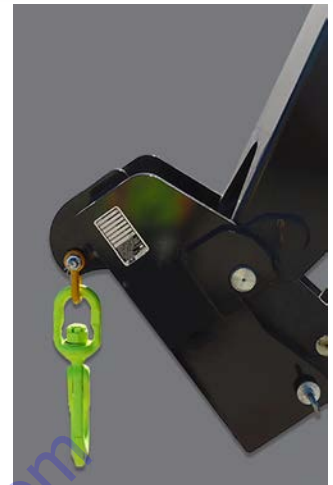
Optimize the use of your JLG® telehandler with the new coupler mounted lifting hook. The lifting hook attaches directly to your machine, without the need of a carriage or forks. The lifting hook allows the ability to lift a suspended load without the obstruction of forks extending beyond the attachment.

Features

- Directly mounts onto machine coupler
- Picks up and carries loads as easily as a fork mounted lifting hook
- Increased visibility of load for operator

Specifications

- Maximum capacity: 15,000 lbs
- Maximum weight: 178 lbs
- Distance to center of gravity: 4.4 in



MODEL NUMBER		JLG PART NUMBER
JLG	642	1001207606
	943	
	1043	
	1055	
	1255	
JLG G SERIES	G15-44A	

NOTES:

- Use only JLG approved attachments with proper material handler model/attachment load capacity charts displayed in the operator's cab.
 - Never use your attachment as a work platform or personnel carrier.
- Can't find the attachment you are looking for? Contact your JLG Aftermarket Parts representative at 1-877-JLG-LIFT or visit www.jlg.com.

Fork Mounted Lifting Hook

The fork mounted lifting hook provides the operator with the ability to lift and lower suspended loads without removing the carriage.

Features

- Not for use with cubing or block forks
- Maximum fork size: 2.36 in. X 7.09 in.
- Use Standard Load Chart for all Fork Mounted Lifting Hooks.



Current and Non-Current Production Fork Mounted Lifting Hook
Ordered through JLG Aftermarket Parts or with new machine orders

LIFTING CAPACITY		8,000 lb.	12,000 lb.	15,000 lb.
PART NO.		2700118	1001097205	1001193803
JLG	642		▪	
	943		▪	
	1043		▪	
	1055		▪	
	1255		▪	
JLG Series	619A	▪	▪	
	723A	▪	▪	
	G5-18A		▪	
	G5-19A	▪		
	G6-23A	▪		
	G6-42A		▪	
	G9-43A		▪	
	G10-55A		▪	
	G12-55A		▪	
G15-44A			▪	
GRADALL	G6-42P		▪	
	522D/524D		▪	
	534D-6		▪	
	534D-9		▪	
	534D-10		▪	
	544D		▪	
	534C-9		▪	
	534C-10		▪	
	544C		▪	

LIFTING CAPACITY		12,000 lb.
PART NO.		1001097205
SKYTRAK T4F	6036 S/N 0160069720 - Present, including 0160065792, 0160065798, 0160065824, 0160069383 & 0160069411	▪
	6042 S/N 0160069720 - Present, including 0160065792, 0160065798, 0160065824, 0160069383 & 0160069411	▪
	8042 S/N 0160069722 - Present, including 0160065791, 0160065796, 0160065825, 0160065826, 0160069336, 0160069359 & 0160069441	▪
	10042 S/N 0160069722 - Present, including 0160065791, 0160065796, 0160065825, 0160065826, 0160069336, 0160069359 & 0160069441	▪
SKYTRAK LEGACY	6036 S/N 0160031200 - 0160069719, excluding: 0160065792, 0160065798, 0160065824, 0160069383 & 0160069411	▪
	6042 S/N 0160031200 - 0160069719, excluding: 0160065792, 0160065798, 0160065824, 0160069383 & 0160069411	▪
	8042 S/N 0160031235 - 0160069721, excluding: 0160065791, 0160065796, 0160065825, 0160065826, 0160069336, 0160069359 & 0160069441	▪
	10042 S/N 0160031425 - 0160069721, excluding: 0160065791, 0160065796, 0160065825, 0160065826, 0160069336, 0160069359 & 0160069441	▪
	10054 S/N 0160031255 - 0160069721, excluding 0160065791, 0160065796, 0160065825, 0160065826, 0160069336, 0160069359 & 0160069441	▪
	4266	▪
LULL	4270	▪
	4290	▪
	5028	▪
	644E-42	▪
	944E-42	▪
	1044C-54 SII	▪
	644B-37	▪
	644B-42	▪
	844C-42	▪
1044C-42	▪	
1044C-54 SII	▪	
644D-34	▪	

NOTES:

- Use only JLG approved attachments with proper material handler model/attachment load capacity charts displayed in the operator's cab.
 - Never use your attachment as a work platform or personnel carrier.
- Can't find the attachment you are looking for? Contact your JLG Aftermarket Parts representative at 1-877-JLG-LIFT or visit www.jlg.com.

Material Handling Arm

Optimize the use of your Telehandler with the JLG Material Handling Arm. The three-way adjustable arm allows your machine more movement and versatility, adding to jobsite productivity and efficiency.

The Material Handling Arm is excellent for various industries, including: construction, civil engineering applications, contractors and the rental industry.

Features

- Telescoping capabilities in three locked positions.
- Multiple lift points allow the material handling arm to handle different load lengths and weights.
- Arm extends and retracts manually for reliable operation.



Current Production Material Handling Arm

Ordered through JLG Aftermarket Parts or with new machine orders

Model		Description	S/N Break	JLG Part Number
JLG	642	Material Handling Arm, 8', 12' and 15'	All	1001176515
	943		All	
	1043		All	
	1055		All	
	1255		All	
JLG G Series	G10-55A		All	
	G12-55A		All	
SKYTRAK T4F	6036 T4F		0160069720 - Present, including 0160065792, 0160065798, 0160065824, 0160069383 & 0160069441	
	6042 T4F		0160069720 - Present, including 0160065792, 0160065798, 0160065824, 0160069383 & 0160069441	
	8042 T4F		0160069722 - Present, including 0160065791, 0160065796, 0160065825, 0160065826, 0160069336, 0160069359 & 0160069441	
	10042 T4F		0160069722 - Present, including 0160065791, 0160065796, 0160065825, 0160065826, 0160069336, 0160069359 & 0160069441	
	10054 T4F		0160069722 - Present, including 0160065791, 0160065796, 0160065825, 0160065826, 0160069336, 0160069359 & 0160069441	
SKYTRAK LEGACY	6042		0160031200 - 0160069719, excluding: 0160065792, 0160065798, 0160065824, 0160069383 & 0160069441	
	8042		0160031235 - 0160069721, excluding: 0160065791, 0160065796, 0160065825, 0160065826, 0160069336, 0160069359 & 0160069441	
	10042		0160031425 - 0160069721, excluding: 0160065791, 0160065796, 0160065825, 0160065826, 0160069336, 0160069359 & 0160069441	
	10054	0160031255 - 0160069721, excluding 0160065791, 0160065796, 0160065825, 0160065826, 0160069336, 0160069359 & 0160069441		

NOTES:

- Use only JLG approved attachments with proper material handler model/attachment load capacity charts displayed in the operator's cab.
 - Never use your attachment as a work platform or personnel carrier.
- Can't find the attachment you are looking for? Contact your JLG Aftermarket Parts representative at 1-877-JLG-LIFT or visit www.jlg.com.

Pipe Grapple

Optimize the use of your Telehandler with the JLG Pipe Grapple. The Pipe Grapple handles various pipe diameters and configurations. The arms fold down on the pipe/poles to secure and prevent the load from rolling off or tipping sideways. The arm design offers the most versatility for handling various diameters and lengths. When idle, the arm assembly pivots to the full vertical position so the truck can be utilized for typical loads.

Features

- Can handle long pipe or pole material efficiently
- Help to stabilize a load of long pipes or poles
- Specially designed clamping arms mounted on top of carriage

Specifications

- 72" carriage
- 48" Forks (ITA - hook mounted)
- 2" - 30" pipe diameter



Current Production Pipe Grapple

Ordered through JLG Aftermarket Parts or with new machine orders

Model*	Capacity	Serial Number Break	JLG Part Number	
JLG	1055	6,000 lb.	All	1001142247
	1255	6,000 lb.	All	
JLG SERIES	10-55A	3,000 lb.	0160038508 - present	
	12-55A	3,000 lb.	0160038508 - present	
	15-44A	3,000 lb.	All	
SKYTRAK™	8042	2,000 lb.	0160069722 - present, including: 0160065791, 0160065796, 0160065825, 0160065826, 0160069336, 0160069359 & 0160069441	
	10042	2,000 lb.	0160069722 - Present, including 0160065791, 0160065796, 0160065825, 0160065826, 0160069336, 0160069359 & 0160069441	
	10054	2,000 lb.	0160069722 - Present, including 0160065791, 0160065796, 0160065825, 0160065826, 0160069336, 0160069359 & 0160069441	
SKYTRAK LEGACY	8042	2,000 lb.	0160031235 - 0160069721, excluding: 0160065791, 0160065796, 0160065825, 0160065826, 0160069336, 0160069359 & 0160069441	
	10042	2,000 lb.	0160031425 - 0160069721, excluding: 0160065791, 0160065796, 0160065825, 0160065826, 0160069336, 0160069359 & 0160069441	
	10054	2,000 lb.	0160031255 - 0160069721, excluding 0160065791, 0160065796, 0160065825, 0160065826, 0160069336, 0160069359 & 0160069441	

*If attachment is not listed in your load chart, you will need to purchase a new load chart, refer to page (load chart page)

Round Fork Tines

The round fork tines allow for stability of the hay bale while maneuvering around objects.

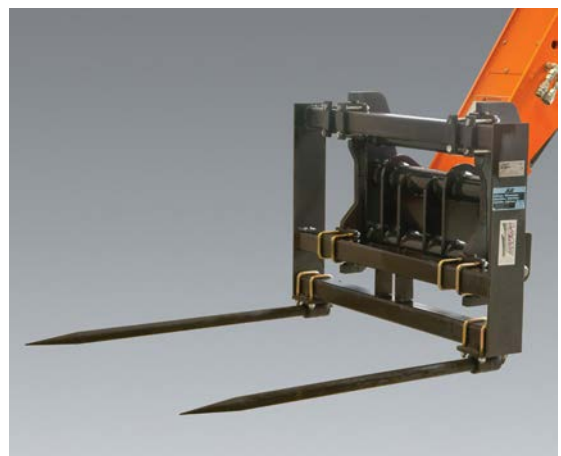
Features

- Work range of 4 ft.

Non-Current Production Round Fork Tines

Ordered exclusively through JLG Aftermarket Parts

JLG PART NUMBER	2340035	
JLG	619A	•
	723A	•



NOTES:

- Use only JLG approved attachments with proper material handler model/attachment load capacity charts displayed in the operator's cab.
 - Never use your attachment as a work platform or personnel carrier.
- Can't find the attachment you are looking for? Contact your JLG Aftermarket Parts representative at 1-877-JLG-LIFT or visit www.jlg.com.

Sheet Material Adapter

The sheet material adapter is ideal for carrying large, flat materials such as drywall, steel plates or plywood, limiting damage during transport.

Features

- May be used with standard, side-tilt, or swing carriage
- May be used with pallet or lumber forks



Current Production Sheet Material Adapters
 Ordered through JLG Aftermarket Parts or with new machine orders

PART NO.		10011002275
JLG G SERIES	G6-42A 0160037722 - AFTER	•
	G9-43A S/N 0160037671 - AFTER	•
	G10-43A	•
	G10-55A S/N 0160037689 - AFTER	•
	G12-55A S/N 0160037689 - AFTER	•
SKYTRAK T4F	6036 S/N 0160069720 - Present, including 0160065792, 0160065798, 0160065824, 0160069383 & 0160069411	•
	6042 S/N 0160069720 - Present, including 0160065792, 0160065798, 0160065824, 0160069383 & 0160069411	•
	8042 S/N 0160069722 - Present, including 0160065791, 0160065796, 0160065825, 0160065826, 0160069336, 0160069359 & 0160069441	•
	10042 S/N 0160069722 - Present, including 0160065791, 0160065796, 0160065825, 0160065826, 0160069336, 0160069359 & 0160069441	•
	10054 S/N 0160069722 - Present, including 0160065791, 0160065796, 0160065825, 0160065826, 0160069336, 0160069359 & 0160069441	•
SKYTRAK LEGACY	6036 S/N 0160031200 - 0160069719, excluding: 0160065792, 0160065798, 0160065824, 0160069383 & 0160069411	•
	6042 S/N 0160031200 - 0160069719, excluding: 0160065792, 0160065798, 0160065824, 0160069383 & 0160069411	•
	8042 S/N 0160031235 - 0160069721, excluding: 0160065791, 0160065796, 0160065825, 0160065826, 0160069336, 0160069359 & 0160069441	•
	10042 S/N 0160031425 - 0160069721, excluding: 0160065791, 0160065796, 0160065825, 0160065826, 0160069336, 0160069359 & 0160069441	•
	10054 S/N 0160031255 - 0160069721, excluding: 0160065791, 0160065796, 0160065825, 0160065826, 0160069336, 0160069359 & 0160069441	•
LULL	644E-42 S/N 0160031500 - AFTER	•
	944E-42 S/N 0160031500 - AFTER	•
	1044C-54 SII S/N 0160037893 - AFTER	•

NOTES:

- Use only JLG approved attachments with proper material handler model/attachment load capacity charts displayed in the operator's cab.
 - Never use your attachment as a work platform or personnel carrier.
- Can't find the attachment you are looking for? Contact your JLG Aftermarket Parts representative at 1-877-JLG-LIFT or visit www.jlg.com.

Non-Current Production Sheet Material Adapters
 Ordered through JLG Aftermarket Parts

Carriage Size		72 in.	72 in.	72 in.	72 in.	N/A
Type		Swing	Swing	Swing	Standard	N/A
Part Number		71293005	90555013	91405078	91405077	10011002275
JLG	G6-42A S/N PRIOR TO 0160037722			•	•	
	G9-43A S/N PRIOR TO 0160037671			•	•	
	G10-55A S/N PRIOR TO 0160037689			•	•	
	G12-55A S/N PRIOR TO 0160037689			•	•	
	TF6-42			•	•	
GRADALL	G6-42P S/N PRIOR TO 0160037689			•		
	G6-42P S/N 0160037689 - AFTER					•
	534D-9 S/N 0160037689 - AFTER					•
	534D-10 S/N PRIOR TO 0160037689		•			
	534D-10 S/N 0160037689 - AFTER					•
	544D S/N PRIOR TO 0160037689		•			
	544D S/N 0160037689 - AFTER					•
SKYTRAK	4266	•				
	4270	•				
	4290	•				
	5028	•				
	6036 S/N PRIOR TO 0160031200	•				
	6042 S/N PRIOR TO 0160031200	•				
	8042 S/N PRIOR TO 0160031235	•				
	10042 S/N PRIOR TO 0160031425	•				
	10054 S/N PRIOR TO 0160031255	•				
LULL	644E-42 S/N PRIOR TO 0160031500	•				
	944E-42 S/N PRIOR TO 0160031500	•				

NOTES:

- Use only JLG approved attachments with proper material handler model/attachment load capacity charts displayed in the operator's cab.
 - Never use your attachment as a work platform or personnel carrier.
- Can't find the attachment you are looking for? Contact your JLG Aftermarket Parts representative at 1-877-JLG-LIFT or visit www.jlg.com.

Sweeper

Our heavy duty sweeper is durable enough to perform under the most challenging conditions and capable of handling all types .

Features

- Increased bucket capacity by 22% with less carry over
- Increase efficiency by dumping less frequently with a larger capacity bucket
- A simple tool-less adjustment knob allows you to accommodate brush wear and still maintain increased bucket capacity.
- Ideal for heavy duty cleanup, millings and snow removal
- High dump feature activated by reversing flow
- Hopper positioned in front
- Powered from loader hydraulics
- Designed and manufactured to construction grade
- Quick Attach mounts
- Industrial Quality Motor
- Broom rotates clockwise for maneuverability
- Hopper opens for dumping

Specifications

- Max Capacity: 1717 lbs.
- Max. Weight: 1490 lbs
- Width (overall): 105 in
- Length (without quick coupler): 72.25 in
- Max. Hydraulic Pressure: 3500 PSI
- Distance to Center of Gravity: 32 in.
- Brush Diameter: 26 in.
- Flow Range: 15-50 GPM
- Brush Width: 7ft.
- Sweeping Width: 84 in.
- Hopper Capacity: .53 yd³



	MODEL	DESCRIPTION	JLG PART NUMBER
JLG	642	Sweeper	1001202904
	943/1043		1001202904
	1055		1001202904
	1255		1001202904

NOTE: Dust Cap that installs on female quick connect fitting is P/N 8420055

NOTE: Replacement Polyester/ Wire Sweeper Brush available P/N 70011926

NOTES:

- Use only JLG approved attachments with proper material handler model/attachment load capacity charts displayed in the operator's cab.
 - Never use your attachment as a work platform or personnel carrier.
- Can't find the attachment you are looking for? Contact your JLG Aftermarket Parts representative at 1-877-JLG-LIFT or visit www.jlg.com.

Tower

The tower increases mobility and efficiency on the job site. It allows the operator to move materials to a higher row of scaffolding by extending the vertical reach without any additional boom extension.

Features

- Tower requires auxiliary hydraulics
- Available with side-tilt carriage
 - JLG and Gradall models equipped with tower with side-tilt carriage requires auxiliary electrics
 - Lull 1044C-54 and 1044C-54 SII models equipped with tower with side-tilt carriage requires second auxiliary circuit
- Available with side-shift 100° swing carriage



Current Production Towers

Ordered through JLG Aftermarket Parts or with new machine orders

TOWER HEIGHT		8 ft.	8 ft.	8 ft.
CARRIAGE TYPE		Standard	Side-Tilt	Side-Tilt
CARRIAGE WIDTH		50 in.	50 in.	50 in.
INCLUDED FORK LENGTH		None	None	None
LIFTING CAPACITY		4,500 lb.	4,500 lb.	4,500 lb.
PART NO.		1001108668	1001108669	1001108670
FORK PIN NO.		70022990	70022990	70022990
JLG	642	•	•	
	943	•	•	
	1043	•	•	
	1055	•		
	1255	•		
JLG SERIES	G6-42A S/N 0160037722 - AFTER	•	•	
	G9-43A S/N 0160037671 - AFTER	•	•	
	G10-43A	•	•	
	G10-55A S/N 0160037689 - AFTER	•	•	
	G12-55A S/N 0160037689 - AFTER	•	•	
SKYTRAK T4F	6036 S/N 0160069720 - Present, including 0160065792, 0160065798, 0160065824, 0160069383 & 0160069411	•		
	6042 S/N 0160069720 - Present, including 0160065792, 0160065798, 0160065824, 0160069383 & 0160069411	•		
	8042 S/N 0160069722 - Present, including 0160065796, 0160065825, 0160065826, 0160069336, 0160069359 & 0160069441	•		
	10042 S/N 0160069722 - Present, including 0160065791, 0160065796, 0160065825, 0160065826, 0160069336, 0160069359 & 0160069441	•		
	10054 S/N 0160069722 - Present, including 0160065791, 0160065796, 0160065825, 0160065826, 0160069336, 0160069359 & 0160069441	•		
SKYTRAK LEGACY	6036 S/N 0160031200 - 0160069719, excluding: 0160065792, 0160065798, 0160065824, 0160069383 & 0160069411	•		
	6042 S/N 0160031200 - 0160069719, excluding: 0160065792, 0160065798, 0160065824, 0160069383 & 0160069411	•		

NOTES:

- Use only JLG approved attachments with proper material handler model/attachment load capacity charts displayed in the operator's cab.
 - Never use your attachment as a work platform or personnel carrier.
- Can't find the attachment you are looking for? Contact your JLG Aftermarket Parts representative at 1-877-JLG-LIFT or visit www.jlg.com.

ATTACHMENTS

Current Production Towers

Ordered through JLG Aftermarket Parts or with new machine orders

TOWER HEIGHT		8 ft.	8 ft.	8 ft.
CARRIAGE TYPE		Standard	Side-Tilt	Side-Tilt
CARRIAGE WIDTH		50 in.	50 in.	50 in.
INCLUDED FORK LENGTH		None	None	None
LIFTING CAPACITY		4,500 lb.	4,500 lb.	4,500 lb.
PART NO.		1001108668	1001108669	1001108670
FORK PIN NO.		70022990	70022990	70022990
SKYTRAK T4F	8042 S/N 0160031235 - 0160069721, excluding: 0160065791, 0160065796, 0160065825, 0160065826, 0160069336, 0160069359 & 0160069441	.		
	10042 S/N 0160031425 - 0160069721, excluding: 0160065791, 0160065796, 0160065825, 0160065826, 0160069336, 0160069359 & 0160069441	.		
	10054 S/N 0160031255 - 0160069721, excluding: 0160065791, 0160065796, 0160065825, 0160065826, 0160069336, 0160069359 & 0160069441	.		
LULL	644E-42 S/N 0160031500 - AFTER	.		
	944E-42 S/N 0160031500 - AFTER	.		
	1044C-54 SII S/N 0160037893 - AFTER	.		.

Non-Current Production Towers

Ordered exclusively through JLG Aftermarket Parts

TOWER HEIGHT	6 ft.	6 ft.	6 ft.	6 ft.	6 ft.	6 ft.	6 ft.	6 ft.	8 ft.	8 ft.	8 ft.	8 ft.
CARRIAGE TYPE	Standard	Standard	Standard	Swing w/ S.S.	Swing w/ S.S.	Standard	Swing w/ S.S.	Swing w/ S.S.	Standard	Standard	Side-Tilt	Side-Tilt
CARRIAGE WIDTH	48 in.	48 in.	66 in.	66 in.	66 in.	72 in.	72 in.	72 in.	50 in.	50 in.	50 in.	50 in.
INCLUDED FORK LENGTH	None	None	None	48 in.	60 in.	None	48 in.	60 in.	None	None	None	None
LIFTING CAPACITY	4,000 lb.	4,500 lb.	4,000 lb.	2,620 lb.	2,880 lb.	4,500 lb.	2,600 lb.	2,878 lb.	2,629 lb.	4,500 lb.	2,629 lb.	4,500 lb.
PART NO.	90455035	91405060	90455037	90455047*	90455054*	91405061	91405070	91415026	48056	1001108668	48057	1001108669
FORK PIN NO.	91034410	70020387	91034432	N/A	N/A	70020388	N/A	N/A	10138064	70022990	10138064	70022990
JLG	G6-42A S/N PRIOR TO 0160037722	.				.	.					
	G9-43A S/N PRIOR TO 0160037671				
	G10-55A S/N PRIOR TO 0160037689				
	G12-55A S/N PRIOR TO 0160037689				
	TF6-42	.				.	.					
GRADALL	G6-42P S/N PRIOR TO 0160037689	.				.	.					
	G6-42P S/N 0160037689 - AFTER								.			.
	522D/524D	.		.								
	534D-6	.		.	.							
	534D-9 S/N PRIOR TO 0160037689						
	534D-9 S/N 0160037689 - AFTER								.			.
	534D-10 S/N PRIOR TO 0160037689						
	534D-10 S/N 0160037689 - AFTER								.			.
	544D S/N PRIOR TO 0160037689						
	544D S/N 0160037689 - AFTER								.			.
	534C-9	.		.	.							
	534C-10	.		.	.							
	544C	.		.	.							
LULL	1044C-54								.		.	
	1044C-54 SII S/N PRIOR TO 0160037893								.		.	

*Includes Forks

NOTES:

- Use only JLG approved attachments with proper material handler model/attachment load capacity charts displayed in the operator's cab.
- Never use your attachment as a work platform or personnel carrier.
- Can't find the attachment you are looking for? Contact your JLG Aftermarket Parts representative at 1-877-JLG-LIFT or visit www.jlg.com.

Trash Hopper

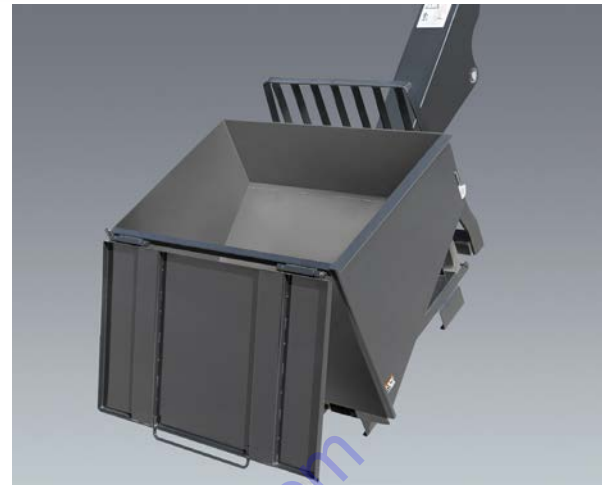
The Trash Hopper can increase job site efficiency by reducing the time and personnel required to move trash and other debris to and from elevated sites. Once the bar under the hopper is placed on the trash bin and pressure is applied, the hopper can be tilted forward and the door will open to allow trash to fall out. To latch the door again, simply tilt the hopper back. The exclusive JLG® design of the bar mechanism does not allow the door to open when no pressure has been applied.

Features

- Saves time from moving trash to and from elevated sites
- Allows operator to remain safely in the cab with the hands-off bar design
- Increases productivity as operator can quickly empty the hopper without leaving the seat

Specifications

- Maximum Capacity:
 - 72"
 - 1.9 cubic yard capacity
 - 2000 lbs. maximum weight capacity
- Maximum Weight: 864 lbs.
- Distance to center of gravity: 32.5 in.



SEE IT IN ACTION!

Visit <https://goo.gl/FHyN6P> or on Online Express, click on Attachments/Trash Hopper and look for the link.

MODEL		SERIAL NUMBER BREAK	JLG PART NUMBER
JLG	642	ALL	1001195082
	943		
	1043		
	1055		
	1255		
SKYTRAK T4F	6036	0160069720 - Present, including 0160065792, 0160065798, 0160065824, 0160069383 & 0160069411	
	6042	0160069720 - Present, including 0160065792, 0160065798, 0160065824, 0160069383 & 0160069411	
	8042	0160069722 - Present, including 0160065791, 0160065796, 0160065825, 0160065826, 0160069336, 0160069359 & 0160069441	
	10042	0160069722 - Present, including 0160065791, 0160065796, 0160065825, 0160065826, 0160069336, 0160069359 & 0160069441	
	10054	0160069722 - Present, including 0160065791, 0160065796, 0160065825, 0160065826, 0160069336, 0160069359 & 0160069441	

NOTES:

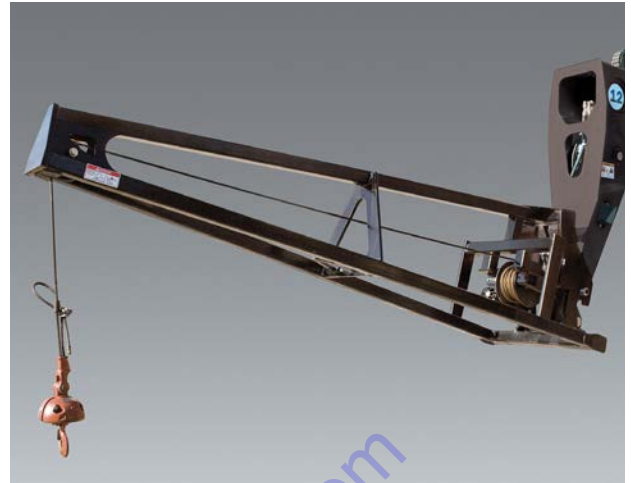
- Use only JLG approved attachments with proper material handler model/attachment load capacity charts displayed in the operator's cab.
 - Never use your attachment as a work platform or personnel carrier.
- Can't find the attachment you are looking for? Contact your JLG Aftermarket Parts representative at 1-877-JLG-LIFT or visit www.jlg.com.

Truss Boom

When lifting and lowering roof trusses, framing walls or steel beams into place, use the truss boom; available with or without a winch.

Features

- Truss boom with winch feature requires auxiliary hydraulics



Current Production Truss Booms

Ordered through JLG Aftermarket Parts or with new machine orders

LENGTH		3 ft. w/winch	11.86 ft.	12 ft.	12 ft. w/ winch	15 ft.
CAPACITY		4,000 lb.	1,433 lb.	2,000 lb.	2,000 lb.	2,000 lb.
PART NO.		1001100967S	0240110	1001099902S	1001099351	1001099901S
JLG	642	•		•	•	•
	943	•		•	•	•
	1043	•		•	•	•
	1055	•		•	•	•
	1255	•		•	•	•
JLG SERIES	G5-18A		•			
	619A		•			
	723A			•	•	•
	G6-42A S/N 0160037722 - AFTER			•	•	•
	G9-43A S/N 0160037671 - AFTER			•	•	•
	G10-43A			•	•	•
	G10-55A S/N 0160037689 - AFTER			•	•	•
	G12-55A S/N 0160037689 - AFTER			•	•	•
G15-44A			•	•	•	
SKYTRAK™	6036 S/N 0160069720 - Present, including 0160065792, 0160065798, 0160065824, 0160069383 & 0160069411			•	•	•
	6042 S/N 0160069720 - Present, including 0160065792, 0160065798, 0160065824, 0160069383 & 0160069411			•	•	•
	8042 S/N 0160069722 - Present, including 0160065791, 0160065796, 0160065825, 0160065826, 0160069336, 0160069359 & 0160069441			•	•	•
	10042 S/N 0160069722 - Present, including 0160065791, 0160065796, 0160065825, 0160065826, 0160069336, 0160069359 & 0160069441			•	•	•
	10054 S/N 0160069722 - Present, including 0160065791, 0160065796, 0160065825, 0160065826, 0160069336, 0160069359 & 0160069441			•	•	•
SKYTRAK LEGACY	6036 S/N 0160031200 - 016009719, excluding: 0160065792, 0160065798, 0160065824, 0160069383 & 0160069411			•	•	•
	6042 S/N 0160031200 - 016009719, excluding: 0160065792, 0160065798, 0160065824, 0160069383 & 0160069411			•	•	•
	8042 S/N 0160031235 - 0160069721, excluding: 0160065791, 0160065796, 0160065825, 0160065826, 0160069336, 0160069359 & 0160069441			•	•	•

NOTES:

- Use only JLG approved attachments with proper material handler model/attachment load capacity charts displayed in the operator's cab.
 - Never use your attachment as a work platform or personnel carrier.
- Can't find the attachment you are looking for? Contact your JLG Aftermarket Parts representative at 1-877-JLG-LIFT or visit www.jlg.com.

Current Production Truss Booms

Ordered through JLG Aftermarket Parts or with new machine orders

LENGTH		3 ft. w/winch	11.86 ft.	12 ft.	12 ft. w/ winch	15 ft.
CAPACITY		4,000 lb.	1,433 lb.	2,000 lb.	2,000 lb.	2,000 lb.
PART NO.		1001100967S	0240110	1001099902S	1001099351	1001099901S
SKYTRAK LEGACY	10042 S/N 0160031425 - 0160069721, excluding: 0160065791, 0160065796, 0160065825, 0160065826, 0160069336, 01600669359 & 0160069441			•	•	•
	10054 S/N 0160031255 - 0160069721, excluding: 0160065791, 0160065796, 0160065825, 0160065826, 0160069336, 01600669359 & 0160069441			•	•	•
LULL	644E-42 S/N 0160031500 - AFTER			•	•	•
	944E-42 S/N 0160031500 - AFTER			•	•	•
	1044C-54 SII S/N 0160037893 - AFTER			•	•	•

Non-Current Production Truss Booms

Ordered exclusively through JLG Aftermarket Parts

LENGTH		3 ft.	10 ft.	10 ft.	10 ft.	10 ft.	10 ft.	10 ft.	12 ft.	15 ft.	15 ft.	15 ft.	15 ft.
WINCH		Yes	No	No	No	No	Yes	Yes	Yes	No	No	No	Yes
CAPACITY		4,000 lb.	2,000 lb.	2,000 lb.	2,000 lb.	2,000 lb.	2,000 lb.	2,000 lb.	2,000 lb.	2,000 lb.	2,000 lb.	2,000 lb.	2,000 lb.
PART NO.		7139608S	7301178S	10338932	90455011	91405083	7301179	10338933	1001099351	7119800	91405082	1001099901S	91405080
JLG	G5-19A												
	G6-23A												
	G6-42A S/N PRIOR TO 0160037722										•		•
	G9-43A S/N PRIOR TO 0160037671						•				•		•
	G10-55A S/N PRIOR TO 0160037689						•				•		•
	G12-55A S/N PRIOR TO 0160037689						•				•		•
	TF6-42						•				•		•
	G6-42P S/N PRIOR TO 0160037689						•				•		•
	G6-42P S/N 0160037689 - AFTER									•		•	
GRADALL	522D/524D												
	534D-6												
	534D-9 S/N PRIOR TO 0160037689												
	534D-9 S/N 0160037689 - AFTER											•	
	534D-10 S/N PRIOR TO 0160037689												
	534D-10 S/N 0160037689 - AFTER											•	
	544D S/N PRIOR TO 0160037689												
	544D S/N 0160037689 - AFTER												•
	534C-9												
	534C-10												
544C													

NOTES:

- Use only JLG approved attachments with proper material handler model/attachment load capacity charts displayed in the operator's cab.
 - Never use your attachment as a work platform or personnel carrier.
- Can't find the attachment you are looking for? Contact your JLG Aftermarket Parts representative at 1-877-JLG-LIFT or visit www.jlg.com.

Non-Current Production Truss Booms
 Ordered exclusively through JLG Aftermarket Parts

LENGTH	3 ft.	10 ft.	10 ft.	10 ft.	10 ft.	10 ft.	10 ft.	12 ft.	15 ft.	15 ft.	15 ft.	15 ft.
WINCH	Yes	No	No	No	No	Yes	Yes	Yes	No	No	No	Yes
CAPACITY	4,000 lb.	2,000 lb.	2,000 lb.	2,000 lb.	2,000 lb.	2,000 lb.	2,000 lb.	2,000 lb.	2,000 lb.	2,000 lb.	2,000 lb.	2,000 lb.
PART NO.	71396085	73011785	10338932	90455011	91405083	7301179	10338933	1001099351	7119800	91405082	10010999015	91405080
SKYTRAK	6036 S/N PRIOR TO 0160031200	•										
	6042 S/N PRIOR TO 0160031200	•										
	8042 S/N PRIOR TO 0160031235	•										
	10042 S/N PRIOR TO 0160031425	•							•			
	10054 S/N PRIOR TO 0160031255	•							•			
	4266	•										
	4270	•										
	4290	•										
	5028	•										
LULL	644E-42 S/N PRIOR TO 0160031500	•	•				•					
	944E-42 S/N PRIOR TO 0160031500	•	•				•					
	1044C-54 SII S/N PRIOR TO 0160037893			•			•					
	644B-37			•			•					
	644B-42			•			•					
	844C-42			•			•					
	1044C-42/1044C-54			•			•					
	6K-37			•			•					
	6K-42			•			•					
	8K-42			•			•					
	10K-42/10K-54			•			•					
	644D-34			•			•					

To order go to Discount-Equipment.com

NOTES:

- Use only JLG approved attachments with proper material handler model/attachment load capacity charts displayed in the operator's cab.
 - Never use your attachment as a work platform or personnel carrier.
- Can't find the attachment you are looking for? Contact your JLG Aftermarket Parts representative at 1-877-JLG-LIFT or visit www.jlg.com.

Universal Skid Steer Adapter

Increase your JLG compact telehandler machine's versatility with the universal skid steer adapter. This adapter is compatible with many existing skid steer attachments.



Current Production and Non-Current Production Universal Skid Steer Adapter
Ordered through JLG Aftermarket Parts or with new machine orders

PART NUMBER		100T102332
JLG	G5-18A	▪
	G5-19A	▪
	G6-23A	▪
	619A	▪
	723A	▪

To order go to Discount-Equipment.com

NOTES:

- Use only JLG approved attachments with proper material handler model/attachment load capacity charts displayed in the operator's cab.
 - Never use your attachment as a work platform or personnel carrier.
- Can't find the attachment you are looking for? Contact your JLG Aftermarket Parts representative at 1-877-JLG-LIFT or visit www.jlg.com.

Fork Mounted Work Platform

Simply slide the forks into the work platform pockets, secure the locking pins and begin lifting people to working heights.

Features

- Only for use with 48 in. pallet forks
- 4 ft. X 8 ft. platform
- Removable front rail
- The only approved fork mounted platform for JLG telehandlers
- 1,000 lbs. capacity
- Side entry
- 3 lanyard attach points
- ANSI approved
- Fork pocket dimensions: 2.5 in. X 5.5 in. X 48 in.



Current and Non-Current Production Fork Mounted Work Platforms
Ordered through JLG Aftermarket Parts or with new machine orders

VERSION		English	French	ISO
PART NO.		1001103637S	1001103736S	1001103730S
JLG	642	•	•	•
	943	•	•	•
	1043	•	•	•
	1055	•	•	•
	1255	•	•	•
JLG SERIES	619A	•	•	•
	723A	•	•	•
	G5-19A	•	•	•
	G6-23A	•	•	•
	G6-42A	•	•	•
	G9-43A	•	•	•
	G10-43A	•	•	•
	G10-55A	•	•	•
	G12-55A	•	•	•
	G15-44A	•	•	•
	TF6-42	•	•	•
GRADALL	G6-42P	•	•	•
	534C9	•	•	•
	534C10	•	•	•
	544C	•	•	•
	522/524D	•	•	•
	534D6	•	•	•
	534D9-45	•	•	•
	534D10-45	•	•	•
544D	•	•	•	

VERSION		English	French	ISO
PART NO.		1001103637S	1001103736S	1001103730S
SKYTRAK T4F	6036 S/N 0160069720 - Present, including 0160065792, 0160065798, 0160065824, 0160069383 & 0160069411	•	•	•
	6042 S/N 0160069720 - Present, including 0160065792, 0160065798, 0160065824, 0160069383 & 0160069411	•	•	•
	8042 S/N 0160069722 - Present, including 0160065791, 0160065796, 0160065825, 0160065826, 0160069336, 0160069359 & 0160069441	•	•	•
	10042 S/N 0160069722 - Present, including 0160065791, 0160065796, 0160065825, 0160065826, 0160069336, 0160069359 & 0160069441	•	•	•
	10054 S/N 0160069722 - Present, including 0160065791, 0160065796, 0160065825, 0160065826, 0160069336, 0160069359 & 0160069441	•	•	•
	4266	•	•	•
	4270	•	•	•
	4290	•	•	•
	5028	•	•	•
	SKYTRAK LEGACY	6036 S/N 0160031200 - 016009719, excluding: 0160065792, 0160065798, 0160065824, 0160069383 & 0160069411	•	•
6042 S/N 0160031200 - 016009719, excluding: 0160065792, 0160065798, 0160065824, 0160069383 & 0160069411		•	•	•
8042 S/N 0160031235 - 0160069721, excluding: 0160065791, 0160065796, 0160065825, 0160065826, 0160069336, 0160069359 & 0160069441		•	•	•
10042 S/N 0160031425 - 0160069721, excluding: 0160065791, 0160065796, 0160065825, 0160065826, 0160069336, 0160069359 & 0160069441		•	•	•
10054 S/N 0160031255 - 0160069721, excluding: 0160065791, 0160065796, 0160065825, 0160065826, 0160069336, 0160069359 & 0160069441		•	•	•
LULL	644B-37	•	•	•
	644B-42	•	•	•
	844C-42	•	•	•
	1044C-42	•	•	•
	1044C-54	•	•	•
	644D-34	•	•	•
	644E-40	•	•	•
	944E-40	•	•	•
1044C-54 SII	•	•	•	

NOTES:

- Use only JLG approved attachments with proper material handler model/attachment load capacity charts displayed in the operator's cab.
 - Never use your attachment as a work platform or personnel carrier.
- Can't find the attachment you are looking for? Contact your JLG Aftermarket Parts representative at 1-877-JLG-LIFT or visit www.jlg.com.

Forks

There are three main fork types available: the pallet fork, the cubing fork and the lumber fork. A pallet fork is designed to handle palletized material and other loads that require transportation and placement. The cubing fork has a smaller width and is used to load, unload and place cubes of brick and block. The lumber fork has a wider width and is ideal for separating stacks of lumber.



Pallet Forks



Cubing Forks



Lumber Forks

NOTES:

- Use only JLG approved attachments with proper material handler model/attachment load capacity charts displayed in the operator's cab.
 - Never use your attachment as a work platform or personnel carrier.
- Can't find the attachment you are looking for? Contact your JLG Aftermarket Parts representative at 1-877-JLG-LIFT or visit www.jlg.com.

Current Production Forks

Ordered through JLG Aftermarket Parts or with new machine orders

TYPE	Pallet	Lumber	Pallet	Pallet	Pallet	Lumber
EYE DIAMETER	2.25"	2.25"	2.25"	2.25"	2.25"	2.25"
FORK DIMENSIONS	2"X4"X48"	1.5"X6"X 60"	2.25"X4"X48"	2.25"X 5"X48"	2.25"X6"X72"	1.75"X 7"X60"
FORK DROP	24"	24"	24"	24"	24"	24"
CAPACITY PER FORK AT 24 IN. LOAD CENTER	3,800 lb.	3,650 lb.	5,475 lb.	6,850 lb.	5,650 lb.	5,400 lb.
PART NO.	1001099458	1001099457	2340045	2340038	1001092391	2340046
JLG	642
	943
	1043
	1055
	1255
JLG	G5-18A
	619A
	723A
	G6-42A S/N 0160037722 - AFTER
	G9-43A S/N 0160037671 - AFTER
	G10-43A
	G10-55A S/N 0160037689 - AFTER
	G12-55A S/N 0160037689 - AFTER
G15-44A	
SKYTRAK 14E	6036 S/N 0160069720 - Present, including 0160065792, 0160065798, 0160065824, 0160069383 & 0160069411
	6042 S/N 0160069720 - Present, including 0160065792, 0160065798, 0160065824, 0160069383 & 0160069411
	8042 S/N 0160069722 - Present, including 0160065791, 0160065796, 0160065825, 0160065826, 0160069336, 0160069359 & 0160069441
	10042 S/N 0160069722 - Present, including 0160065791, 0160065796, 0160065825, 0160065826, 0160069336, 0160069359 & 0160069441
10054 S/N 0160069722 - Present, including 0160065791, 0160065796, 0160065825, 0160065826, 0160069336, 0160069359 & 0160069441	
SKYTRAK LEGACY	6036 S/N 0160031200 - 016009719, excluding: 0160065792, 0160065798, 0160065824, 0160069383 & 0160069411
	6042 S/N 0160031200 - 016009719, excluding: 0160065792, 0160065798, 0160065824, 0160069383 & 0160069411
	8042 S/N 0160031235 - 0160069721, excluding: 0160065791, 0160065796, 0160065825, 0160065826, 0160069336, 0160069359 & 0160069441
	10042 S/N 0160031425 - 0160069721, excluding: 0160065791, 0160065796, 0160065825, 0160065826, 0160069336, 0160069359 & 0160069441
	10054 S/N 0160031255 - 0160069721, excluding: 0160065791, 0160065796, 0160065825, 0160065826, 0160069336, 0160069359 & 0160069441
LULL	644E-42 S/N 0160037794 - AFTER
	944E-42 S/N 0160037794 - AFTER
	1044C-54 SII S/N 0160037893 - AFTER

NOTES:

- Use only JLG approved attachments with proper material handler model/attachment load capacity charts displayed in the operator's cab.
 - Forks rated less than the attachment and/or machine capacity decrease the capacity of the attachment and machine to that of the forks.
 - Forks rated more than the attachment and/or machine capacity do not increase the attachment or machine capacity.
 - Never use your attachment as a work platform or personnel carrier.
- Can't find the attachment you are looking for? Contact your JLG Aftermarket Parts representative at 1-877-JLG-LIFT or visit www.jlg.com.

Current Production Forks

Ordered through JLG Aftermarket Parts or with new machine orders

TYPE	Lumber	Cubing	Pallet	Lumber	Pallet	Dual Taper
EYE DIAMETER	2.25"	2.25"	2"	2.25"	2.31	2.31
FORK DIMENSIONS	2.25"X6"X60"	2"X2"X48"	2.25"X4"X48"	2"X7"X60"	2.36"X6"X48"	2.36"x 6"x60"
FORK DROP	24"	24"	24"	24"	24"	24"
CAPACITY PER FORK AT 24 IN. LOAD CENTER	8,150 lb.	1,940 lb.	5,000 lb.	6,850 lb.	7,500 LB.	7,500 LB.
PART NO.	2340039	2340037	7301408		1001193801	1001193802
JLG	642	.	.	.		
	943	.	.	.		
	1043	.	.	.		
	1055	.	.	.		
	1255	.	.	.		
JLG	G5-18A	.	.	.		
	619A	.	.	.		
	723A	.	.	.		
	G6-42A S/N 0160037722 - AFTER	.	.	.		
	G9-43A S/N 0160037671 - AFTER	.	.	.		
	G10-43A	.	.	.		
	G10-55A S/N 0160037689 - AFTER	.	.	.		
	G12-55A S/N 0160037689 - AFTER	.	.	.		
G15-44A	
SKYTRAK T4F	6036 S/N 0160069720 - Present, including 0160065792, 0160065798, 0160065824, 0160069383 & 0160069441	.	.	.		
	6042 S/N 0160069720 - Present, including 0160065792, 0160065798, 0160065824, 0160069383 & 0160069441	.	.	.		
	8042 S/N 0160069722 - Present, including 0160065791, 0160065796, 0160065825, 0160065826, 0160069336, 0160069359 & 0160069441	.	.	.		
	10042 S/N 0160069722 - Present, including 0160065791, 0160065796, 0160065825, 0160065826, 0160069336, 0160069359 & 0160069441	.	.	.		
	10054 S/N 0160069722 - Present, including 0160065791, 0160065796, 0160065825, 0160065826, 0160069336, 0160069359 & 0160069441	.	.	.		
SKYTRAK LEGACY	6036 S/N 0160031200 - 016009719, excluding: 0160065792, 0160065798, 0160065824, 0160069383 & 0160069441	.	.	.		
	6042 S/N 0160031200 - 016009719, excluding: 0160065792, 0160065798, 0160065824, 0160069383 & 0160069441	.	.	.		
	8042 S/N 0160031235 - 0160069721, excluding: 0160065791, 0160065796, 0160065825, 0160065826, 0160069336, 0160069359 & 0160069441	.	.	.		
	10042 S/N 0160031425 - 0160069721, excluding: 0160065791, 0160065796, 0160065825, 0160065826, 0160069336, 0160069359 & 0160069441	.	.	.		
	10054 S/N 0160031255 - 0160069721, excluding: 0160065791, 0160065796, 0160065825, 0160065826, 0160069336, 0160069359 & 0160069441	.	.	.		
LULL	644E-42 S/N 0160037794 - AFTER	.	.	.		
	944E-42 S/N 0160037794 - AFTER	.	.	.		
	1044C-54 SII S/N 0160037893 - AFTER	.	.	.		

NOTES:

- Use only JLG approved attachments with proper material handler model/attachment load capacity charts displayed in the operator's cab.
 - Forks rated less than the attachment and/or machine capacity decrease the capacity of the attachment and machine to that of the forks.
 - Forks rated more than the attachment and/or machine capacity do not increase the attachment or machine capacity.
 - Never use your attachment as a work platform or personnel carrier.
- Can't find the attachment you are looking for? Contact your JLG Aftermarket Parts representative at 1-877-JLG-LIFT or visit www.jlg.com.

Non-Current Production Forks

Ordered exclusively through JLG Aftermarket Parts

TYPE	Cubing	Pallet (Swing Mast Carriage Only)	Drywall	Pallet	Pallet	Pallet	Pallet	Pallet	Lumber	Pallet (Swing Mast)	Pallet	Lumber	Pallet	Cubing	
EYE DIAMETER	2"	2"	2"	2"	2"	2"	2"	2"	2"	2"	2"	2"	2"	2.25"	
FORK DIMENSIONS	2"X2"X48"	1.75"X4"X48"	1.75"X4"X48"	2"X4"X48"	2.25"X4"X48"	1.75"X6"X48"	2"X6"X48"	2"X6"X60"	2"X6"X60"	2"X6"X60"	2"X6"X72"	2"X6"X72"	2"X6"X96"	2"X2"X48"	
FORK DROP	20"	25.5"	29"	20"	20.5"	20"	20"	20"	20"	25.5"	20"	20"	20"	20"	
CAPACITY PER FORK AT 24 IN. LOAD CENTER	1,500 lb.	2,500 lb.	2,500 lb.	4,000 lb.	5,475 lb.	4,500 lb.	5,000 lb.	5,000 lb.	5,650 lb.	5,650 lb.	5,000 lb.	5,000 lb.	3,750 lb. (rated at 48" load center)	1,940 lb.	
PART NO.	90600390	90553008	90453013	90453002	90453048	90601819	90553005	90601015	91163269	90453045	90553018	91123132	H0453002	91403359	
JLG	G5-19A														
	G6-23A														
	G6-42A S/N PRIOR TO 0160037722													.	
	G9-43A S/N PRIOR TO 0160037671													.	
	G10-55A S/N PRIOR TO 0160037689													.	
	G12-55A S/N PRIOR TO 0160037689													.	
	TF6-42													.	
GRADALL	G6-42P S/N PRIOR TO 0160037689													.	
	G6-42P S/N 0160037689 -AFTER														
	522D/524D		
	534D-6		
	534D-9 S/N PRIOR TO 0160037689		
	534D-9 S/N 0160037689 -AFTER														
	534D-10 S/N PRIOR TO 0160037689		
	534D-10 S/N 0160037689 -AFTER														
	544D S/N PRIOR TO 0160037689	
	544D S/N 0160037689 -AFTER														
	534C-9	
	534C-10		
	544C		

NOTES:

- Use only JLG approved attachments with proper material handler model/attachment load capacity charts displayed in the operator's cab.
 - Forks rated less than the attachment and/or machine capacity decrease the capacity of the attachment and machine to that of the forks.
 - Forks rated more than the attachment and/or machine capacity do not increase the attachment or machine capacity.
 - Never use your attachment as a work platform or personnel carrier.
- Can't find the attachment you are looking for? Contact your JLG Aftermarket Parts representative at 1-877-JLG-LIFT or visit www.jlg.com.

Non-Current Production Forks
 Ordered exclusively through JLG Aftermarket Parts

TYPE	Cubing	Lumber	Drywall	Pallet	Pallet	Pallet	Pallet	Pallet	Pallet	Lumber	Lumber	Lumber	Pallet
EYE DIAMETER	2.25"	2.25"	2.25"	2.25"	2.25"	2.25"	2.25"	2.25"	2.25"	2.25"	2.25"	2.25"	2.25"
FORK DIMENSIONS	2"X2"X48"	1.75"X4"X48"	1.75"X4"X48"	2.25"X4"X48"	2.25"X4"X48"	2.25"X5"X48"	2.25"X5"X48"	2"X6"X60"	2.25"X6"X60"	2.25"X6"X60"	1.75"X7"X60"	2.25"X6"X72"	2.25"X6"X72"
FORK DROP	24"	25.5"	29"	20"	24"	20"	24"	25.5"	20"	24"	24"	20"	24"
CAPACITY PER FORK AT 24 IN. LOAD CENTER	1,940 lb.	3,050 lb.	2,500 lb.	5,475 lb.	5,475 lb.	6,850 lb.	6,850 lb.	5,650 lb.	8,150 lb.	8,150 lb.	5,400 lb.	8,150 lb.	5,650 lb.
PART NO.	2340037	91403364	91403366	91513206	2340045	91563141	2340038	91403580	91563142	2340039	2340046	91563143	1001092391
JLG	G5-19A												
	G6-23A												
	G6-42A S/N PRIOR TO 0160037722
	G9-43A S/N PRIOR TO 0160037671
	G10-55A S/N PRIOR TO 0160037689
	G12-55A S/N PRIOR TO 0160037689
	TF6-42
GRADALL	G6-42P S/N PRIOR TO 0160037689
	G6-42P S/N 0160037689 -AFTER
	522D/524D												
	534D-6												
	534D-9 S/N PRIOR TO 0160037689
	534D-9 S/N 0160037689 -AFTER
	534D-10 S/N PRIOR TO 0160037689
	534D-10 S/N 0160037689 -AFTER
	544D S/N PRIOR TO 0160037689
	544D S/N 0160037689 -AFTER
	534C-9												
	534C-10												
	544C												

NOTES:

- Use only JLG approved attachments with proper material handler model/attachment load capacity charts displayed in the operator's cab.
 - Forks rated less than the attachment and/or machine capacity decrease the capacity of the attachment and machine to that of the forks.
 - Forks rated more than the attachment and/or machine capacity do not increase the attachment or machine capacity.
 - Never use your attachment as a work platform or personnel carrier.
- Can't find the attachment you are looking for? Contact your JLG Aftermarket Parts representative at 1-877-JLG-LIFT or visit www.jlg.com.

Non-Current Production Forks

Ordered exclusively through JLG Aftermarket Parts

TYPE	Cubing (Sold as Set)	Pallet (Sold as Set)	Pallet	Pallet (Sold as Set)	Pallet	Pallet (Sold as Set)	Pallet	Pallet	Lumber	Pallet	Lumber	Pallet	Pallet
EYE DIAMETER	2.375"	2.375"	2.375"	2.375"	2.375"	2.375"	1.875"	1.875"	1.875"	1.875"	1.875"	2"	2"
FORK DIMENSIONS	2"X2"X48"	2"X4"X48"	2"X4"X48"	2.25"X4"X48"	1.75"X5"X48"	2"X5"X48"	2"X4"X42"	2"X4"X48"	1.75"X6"X48"	2"X4"X60"	1.75"X6"X60"	2.25" X 4" X 42"	2"X5"X42"
FORK DROP	21.5"	21.5"	28"	21.5"	28"	21.5"	25"	27"	25"	25"	25"	25"	25"
CAPACITY PER FORK AT 24 IN. LOAD CENTER	1,940 lb.	4,409 lb. (rated at 20" load center)	4,409 lb. (rated at 20" load center)	4,409 lb.	4,409 lb. (rated at 20" load center)	4,409 lb. (rated at 20" load center)	4,000 lb.	4,000 lb.	4,000 lb.	4,000 lb.	4,000 lb.	5,000 lb.	5,000 lb.
PART NO.	1001097922S	2340041	2340030	1001107586	2340029	1001117945	10238026	1001099850	10217103	10238117	10223610	10239893	10238568
JLG	G5-19A
	G6-23A
	G6-42A S/N PRIOR TO 0160037722												
	G9-43A S/N PRIOR TO 0160037671												
	G10-55A S/N PRIOR TO 0160037689												
	G12-55A S/N PRIOR TO 0160037689												
	TF6-42												
GRADALL	G6-42P S/N PRIOR TO 0160037689												
	G6-42P S/N 0160037689 -AFTER												
	522D/524D												
	534D-6							.				.	
	534D-9 S/N PRIOR TO 0160037689						
	534D-9 S/N 0160037689 -AFTER						
	534D-10 S/N PRIOR TO 0160037689						
	534D-10 S/N 0160037689 -AFTER											.	.
	544D S/N PRIOR TO 0160037689						
	544D S/N 0160037689 -AFTER						
	534C-9						
	534C-10											.	.
	544C						

NOTES:

- Use only JLG approved attachments with proper material handler model/attachment load capacity charts displayed in the operator's cab.
 - Forks rated less than the attachment and/or machine capacity decrease the capacity of the attachment and machine to that of the forks.
 - Forks rated more than the attachment and/or machine capacity do not increase the attachment or machine capacity.
 - Never use your attachment as a work platform or personnel carrier.
- Can't find the attachment you are looking for? Contact your JLG Aftermarket Parts representative at 1-877-JLG-LIFT or visit www.jlg.com.

Non-Current Production Forks
 Ordered exclusively through JLG Aftermarket Parts

TYPE	Cubing	Cubing	Cubing	Pallet	Pallet	Pallet	Pallet	Pallet	Lumber	Drywall	Lumber	Pallet	Lumber
EYE DIAMETER	2"	2"	2"	2"	2"	2"	2"	2"	2"	2"	2"	2"	2"
FORK DIMENSIONS	2"X2"X48"	2"X2"X48"	2"X2"X48"	1.75"X4"X48"	2"X4"X48"	2.25"X4"X48"	2.25"X4"X48"	2"X5"X48"	2"X6"X48"	1.75"X7"X48"	1.75"X7"X48"	2.25"X4"X60"	1.75"X5"X60"
FORK DROP	22"	25"	27"	22"	24"	24"	27"	27"	29.5"	24"	25"	25"	24"
CAPACITY PER FORK AT 24 IN. LOAD CENTER	2,000 lb.	2,000 lb.	2,000 lb.	3,000 lb.	4,000 lb.	5,000 lb.	5,000 lb.	5,000 lb.	5,000 lb.	5,000 lb.	5,000 lb.	5,000 lb.	3,000 lb.
PART NO.	7139747	10238118	1001099845	7048233	7097523	7301408	1001099847	1001099846	10238181	7130453	10239094	10239895	7092793
JLG	G5-19A
	G6-23A			
	G6-42A S/N PRIOR TO 0160037722			
	G9-43A S/N PRIOR TO 0160037671			
	G10-55A S/N PRIOR TO 0160037689			
	G12-55A S/N PRIOR TO 0160037689			
	TF6-42			
GRADALL	G6-42P S/N PRIOR TO 0160037689			
	G6-42P S/N 0160037689 -AFTER			
	522D/524D			
	534D-6					
	534D-9 S/N PRIOR TO 0160037689		.	.									
	534D-9 S/N 0160037689 -AFTER		.	.									
	534D-10 S/N PRIOR TO 0160037689		.	.									
	534D-10 S/N 0160037689 -AFTER	
	544D S/N PRIOR TO 0160037689		.	.									
	544D S/N 0160037689 -AFTER		.	.									
	534C-9		.	.									
	534C-10	
	544C		.	.									

NOTES:

- Use only JLG approved attachments with proper material handler model/attachment load capacity charts displayed in the operator's cab.
 - Forks rated less than the attachment and/or machine capacity decrease the capacity of the attachment and machine to that of the forks.
 - Forks rated more than the attachment and/or machine capacity do not increase the attachment or machine capacity.
 - Never use your attachment as a work platform or personnel carrier.
- Can't find the attachment you are looking for? Contact your JLG Aftermarket Parts representative at 1-877-JLG-LIFT or visit www.jlg.com.

Non-Current Production Forks

Ordered exclusively through JLG Aftermarket Parts

TYPE	Pallet	Lumber	Lumber	Lumber	Lumber	Pallet	Cubing	Pallet	Pallet (Swing Carriage Only)	Pallet	Lumber (Swing Carriage Only)	Pallet (Swing Carriage Only)
EYE DIAMETER	2"	2"	2"	2"	2"	2"	2.25"	2.25"	2.25"	2.25"	2.25"	2.25"
FORK DIMENSIONS	2"X5"X60"	2"X6"X60"	2"X6"X60"	1.75"X7"X60"	1.75"X7"X60"	2" X 5" X 72"	2" X 2" X 48"	2.25"X4"X48"	2"X5"X48"	2.25"X5"X48"	1.75"X6"X48"	2"X5"X60"
FORK DROP	27"	24"	29.5"	24"	27"	24"	24"	24"	22"	24"	22"	22"
CAPACITY PER FORK AT 24 IN. LOAD CENTER	5,000 lb.	5,650 lb.	5,000 lb.	6,000 lb.	5,000 lb.	5,060 lb.	1,940 lb.	5,475 lb.	5,060 lb.	6,850 lb.	4,000 lb.	5,000 lb.
PART NO.	1001099848	2340036	10238182	7139746	1001099849	2340042	2340037	2340045	2340048	2340038	10239954	10239970
JLG	G5-19A
	G6-23A
	G6-42A S/N PRIOR TO 0160037722
	G9-43A S/N PRIOR TO 0160037671
	G10-55A S/N PRIOR TO 0160037689
	G12-55A S/N PRIOR TO 0160037689
	TF6-42
GRADALL	G6-42P S/N PRIOR TO 0160037689
	G6-42P S/N 0160037689 -AFTER
	522D/524D
	534D-6
	534D-9 S/N PRIOR TO 0160037689
	534D-9 S/N 0160037689 -AFTER
	534D-10 S/N PRIOR TO 0160037689
	534D-10 S/N 0160037689 -AFTER
	544D S/N PRIOR TO 0160037689
	544D S/N 0160037689 -AFTER
	534C-9
	534C-10
	544C

NOTES:

- Use only JLG approved attachments with proper material handler model/attachment load capacity charts displayed in the operator's cab.
 - Forks rated less than the attachment and/or machine capacity decrease the capacity of the attachment and machine to that of the forks.
 - Forks rated more than the attachment and/or machine capacity do not increase the attachment or machine capacity.
 - Never use your attachment as a work platform or personnel carrier.
- Can't find the attachment you are looking for? Contact your JLG Aftermarket Parts representative at 1-877-JLG-LIFT or visit www.jlg.com.

Non-Current Production Forks
 Ordered exclusively through JLG Aftermarket Parts

TYPE	Lumber	Lumber (Swing Carriage Only)	Lumber	Pallet	Pallet (Fork Positioning Carriage Only)	Pallet (Fork Positioning Carriage Only)	Pallet (Fork Positioning Carriage Only)	Pallet (Fork Positioning Carriage Only)	Pallet (Fork Positioning Carriage Only)	Pallet (Fork Positioning Carriage Only)
EYE DIAMETER	2.25"	2.25"	2.25"	2.25"	2.75"	2.75"	2.75"	2.75"	2.75"	2.75"
FORK DIMENSIONS	2.25"X6"X60"	1.75"X7"X60"	1.75"X7"X60"	2.25"X6"X72"	2"X4"X42"	2"X4"X42"	2"X5"X42"	2"X5"X42"	2"X4"X48"	2"X4"X48"
FORK DROP	24"	22"	24"	24"	25"	25"	25"	25"	25"	25"
CAPACITY PER FORK AT 24 IN. LOAD CENTER	8,150 lb.	5,000 lb.	5,400 lb.	5,650 lb.	4,000 lb.	4,000 lb.	5,000 lb.	5,000 lb.	4,000 lb.	4,000 lb.
PART NO.	2340039	10239969	2340046	1001092391	10338502 (LH)	10338503 (RH)	10365687 (LH)	10365686 (RH)	10339345 (LH)	10339346 (RH)
JLG	G5-19A	.	.	.						
	G6-23A	.	.	.						
	G6-42A S/N PRIOR TO 0160037722	.	.	.						
	G9-43A S/N PRIOR TO 0160037671	.	.	.						
	G10-55A S/N PRIOR TO 0160037689	.	.	.						
	G12-55A S/N PRIOR TO 0160037689									
	TF6-42									
GRADALL	G6-42P S/N PRIOR TO 0160037689									
	G6-42P S/N 0160037689 - AFTER	.	.	.						
	522D/524D	.	.	.						
	534D-6		
	534D-9 S/N PRIOR TO 0160037689			
	534D-9 S/N 0160037689 - AFTER			
	534D-10 S/N PRIOR TO 0160037689			
	534D-10 S/N 0160037689 - AFTER						.	.		
	544D S/N PRIOR TO 0160037689			
	544D S/N 0160037689 - AFTER			
	534C-9			
	534C-10									
	544C									

NOTES:

- Use only JLG approved attachments with proper material handler model/attachment load capacity charts displayed in the operator's cab.
 - Forks rated less than the attachment and/or machine capacity decrease the capacity of the attachment and machine to that of the forks.
 - Forks rated more than the attachment and/or machine capacity do not increase the attachment or machine capacity.
 - Never use your attachment as a work platform or personnel carrier.
- Can't find the attachment you are looking for? Contact your JLG Aftermarket Parts representative at 1-877-JLG-LIFT or visit www.jlg.com.

Fork Pins and Bars

Whether you call it a fork pin, fork bar or fork shaft, we can supply your JLG Telehandler with the size you need. Looking for a specific size? Please refer to the table below. If your size is not listed, or for compatibility questions, consult the JLG Parts Department prior to purchase.

Features

- Available in diameters from 1 7/8" to 2.36"
- Zinc Plated for durability



SIZE (in.)	PART NUMBER
1 7/8 x 53 3/4	10138064
1 7/8 x 54.06	10138499
1 7/8 X 76 1/4	10116207
2 3/8 x 50 13/16	7028136
2 x 51.12	7128772
2 X 54 1/2	90451058
2 x 54.06	10165685
2 x 54.25	10223049
2 x 55.38	7128782
2 x 63.12	7128792
2 X 71	90402478
2 X 72 1/8	91301083
2 X 76 1/2	90551013
2 x 77.25	10124495
2.25 x 12 3/4	91401340
2.25 x 48.38	70021339

SIZE (in.)	PART NUMBER
2.25 x 50.25	70022105
2.25 X 52.44	70022990
2.25 x 54 5/8	91401303
2.25 x 55.125	3423275
2.25 x 64.5 (non plated)	70011218
2.25 x 64.5 (plated)	70011215
2.25 x 74	70011217
2.25 x 74 (non plated)	70011220
2.25 x 65.125	3423242
2.25 x 69 (non plated)	70011219
2.25 x 69 (plated)	70011216
2.25 x 77.125	3423276
2.25 x 78 5/8	91401324
2.25 x 79	70020027
2.36 x 24.69	4040283
3 x 84	70011759

Forks rated less than the attachment and/or machine capacity decrease the capacity of the attachment and machine to that of the forks. Forks rated more than the attachment and/or machine capacity do not increase the attachment or machine capacity.

NOTES:

- Use only JLG approved attachments with proper material handler model/attachment load capacity charts displayed in the operator's cab.
- Forks rated less than the attachment and/or machine capacity decrease the capacity of the attachment and machine to that of the forks.
- Forks rated more than the attachment and/or machine capacity do not increase the attachment or machine capacity.
- Never use your attachment as a work platform or personnel carrier.

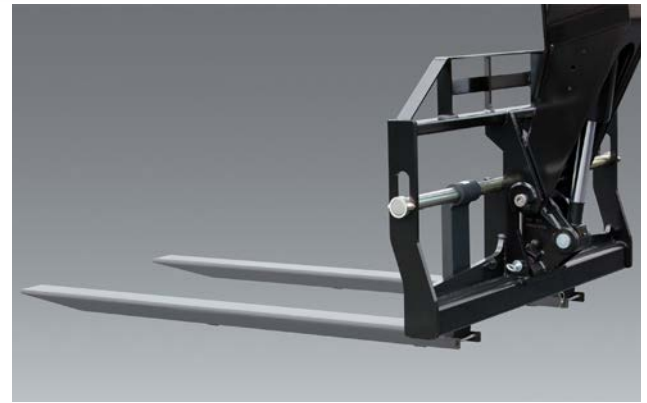
Can't find the attachment you are looking for? Contact your JLG Aftermarket Parts representative at 1-877-JLG-LIFT or visit www.jlg.com.

Fork Extensions

The fork extensions increase your machine's versatility on the jobsite.

Features

- Factory approved
- Designed specifically for JLG manufactured telehandlers
- Requires two per machine
- Requires fork part number 1001092391 or 2340039 for use



Current & Non-Current Production Fork Extensions
 Ordered through JLG Aftermarket Parts or with new machine orders

MODEL NUMBER	S/N BREAK	DESCRIPTION	JLG PART NUMBER	
JLG	642	90" FORK EXTENSION	1001137512	
	943/1043			
	1055/1255			
JLG SERIES	G6-42A			0160037722 - After
	G9-43A			0160037671 - After
	G10-43A			
	G10-55A/ G12-55A			0160037689 - After
	G15-44A			
LULL	644E-42/ 944E-42			160031500 - After
	1044C-54 Series II			0160037893 - After
SKYTRAK T4F	6036			0160069720 - Present, including 0160065792, 0160065798, 0160065824, 0160069383 & 0160069411
	6042			0160069720 - Present, including 0160065792, 0160065798, 0160065824, 0160069383 & 0160069411
	8042			0160069722 - Present, including 0160065791, 0160065796, 0160065825, 0160065826, 0160069336, 0160069359 & 0160069441
	10042	0160069722 - Present, including 0160065791, 0160065796, 0160065825, 0160065826, 0160069336, 0160069359 & 0160069441		
	10054	S/N 0160069722 - Present, including 0160065791, 0160065796, 0160065825, 0160065826, 0160069336, 0160069359 & 0160069441		
SKYTRAK LEGACY	6036/6042	0160069720 - Present, including 0160065792, 0160065798, 0160065824, 0160069383 & 0160069411		
	8042	0160069722 - Present, including 0160065791, 0160065796, 0160065825, 0160065826, 0160069336, 0160069359 & 0160069441		
	10042/10054	0160069722 - Present, including 0160065791, 0160065796, 0160065825, 0160065826, 0160069336, 0160069359 & 0160069441		

NOTES:

- Use only JLG approved attachments with proper material handler model/attachment load capacity charts displayed in the operator's cab.
 - Never use your attachment as a work platform or personnel carrier.
- Can't find the attachment you are looking for? Contact your JLG Aftermarket Parts representative at 1-877-JLG-LIFT or visit www.jlg.com.

Fork Caliper

Worn out forks are unreliable and inefficient on the job site. A fork caliper can help you to identify fork wear before it becomes an issue.

If the inner jaws pass over the fork, wear is more than 10%. When wear is more than 10%, the fork must be removed from service and replaced. If the inner jaws hit the fork, wear is within the tolerance and the fork is approved for use.

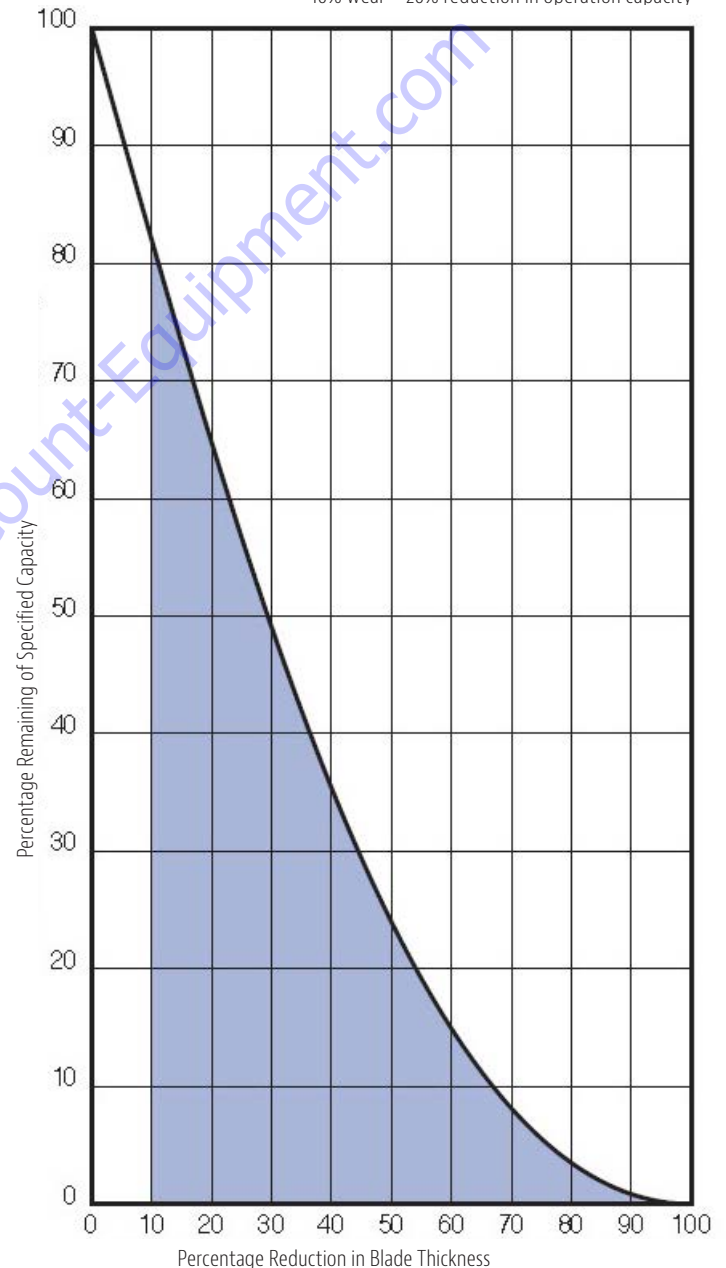
Features

- Pocket portable
- Easy to use on the job
- Measure the thickness of the fork arm shank



Description	JLG Part Number
Fork Inspection Safety Kit (Includes fork arm wear caliper guide, inspection log and caliper)	70011840
Caliper	7025304

10% wear = 20% reduction in operation capacity



NOTES:

- Use only JLG approved attachments with proper material handler model/attachment load capacity charts displayed in the operator's cab.
- Never use your attachment as a work platform or personnel carrier.
- Can't find the attachment you are looking for? Contact your JLG Aftermarket Parts representative at 1-877-JLG-LIFT or visit www.jlg.com.

This chart shows how fork wear reduces truck capacity. ANSI/ITSDF B56.1-2012 standards require that each fork be at least half the capacity of the truck at the rated load center distance as shown on the truck nameplate. Refer to ANSI website: www.itsdf.org/pB56.asp

Load Chart Booklets-Current Production Common Attachments

The new attachments have been designed to fit the new common boom, please consult these serial number breaks for proper load charts.

Approved Common Attachments		Brand	Machine Model	Load Chart Booklet	Serial Number Break
STANDARD Load Chart Booklet					
1001187087	Software, Class C & D Load Chart Library		642, 943, 1043, 1055, 1255 ONLY		
1170021S	CARRIAGE, 50° STD, 12000# CAP	JLG ALL-WHEEL STEER	G6-42A	1001106001	0160037722 thru 0160040659
1170024S	CARRIAGE, 60° STD, 12000# CAP		G6-42A	1001130793	0160040678 AND after
1001132514S	CARRIAGE, 72° STD, 12000# CAP		G9-43A	1001106002	0160037671 thru 0160040674, excluding 0160040468 and 0160040672
1170054S	CARRIAGE, 50° SIDE TILT, 10000# CAP		G9-43A	1001130663	0160040675 AND after, including 0160040468 and 0160040672
1001101956S	CARRIAGE, 60° SIDE TILT, 10000# CAP		G10-43A	1001113013	0160037671 thru 0160040674, excluding 0160040468 and 0160040672
1170057S	CARRIAGE, 72° SIDE TILT, 10000# CAP		G10-43A	1001130935	0160040675 AND after, including 0160040468 and 0160040672
1001095418S	CARRIAGE, 72° 90 DEG SWING, 10000# CAP		G10-55A	1001106003	0160037690 thru 0160038486, including 0160038505 and 0160038507, excluding 0160038324, 0160038489 and 0160038493
1001100822	BUCKET, 72" 1.0 CU YD		G10-55A	1001115135	0160038500 AND after, including 0160038324, 0160038489 and 0160038493, excluding 0160038505 and 0160038507
1001100823	BUCKET, 96" 1.5 CU YD		G12-55A	1001106004	0160037689 thru 0160038533
1001100824	BUCKET, 102" 2.0 CU YD		G12-55A	1001115536	0160038538 AND after
1001207606	COUPLER MOUNTED HOOK 15000# CAP		JLG 1055	1001208863	
			JLG 1255	1001208865	
1001195082	TRASH HOPPER		JLG 1055	1001211156	
1001137512 ¹	FORK EXTENSIONS 90"		JLG 1255	1001211153	
1001100967S	TRUSS BOOM, 3' W/ WINCH, 4000# CAP	GRADALL/ JLG REAR PIVOT STEER	G6-42P	1001106005	0160037689 AND after
1001099901S	TRUSS BOOM, 15' W/O WINCH, 2000# CAP		534D9-45	1001112753	0160038519 AND after
1001103730S ²	PLATFORM, FORK MOUNTED 4X8 ISO, 1000# CAP		534D10-45	1001112753	0160038445 AND after
1001103736S ²	PLATFORM, FORK MOUNTED 4X8 FRENCH, 1000# CAP		544D10-55	1001106008	0160037689 AND after
1001103637S ²	PLATFORM, FORK MOUNTED 4X8 ANSI, 1000# CAP		1044C-54	1001106009	0160037900 AND after
91565094 ³	HOOK, LIFTING 12000# CAP	LULL	644E - 42	1001134329	0160037794 AND after, including 0160045421
1001211156	1001202904			944E - 42	1001106011
		SKYTRAK	6036	1001106012	0160037788 AND after
			6042	1001106013	0160037788 AND after
			8042	1001106014	0160037799 AND after
			10042	1001106015	0160037798 AND after
10054	1001106016	0160037793 AND after			

SPECIAL NOTES:

When using the fork mounted attachments on approved JLG models, always make sure to have the appropriate carriage load chart and operator and safety manual on hand.

¹Designed specifically to be used with and requires JLG fork part # 1001092391 or JLG for part # 2340039

²When using the fork mounted work platform, always reference the appropriate machine manual in conjunction with the operator and safety manual (pn-31200160) for installation instructions, proper machine configuration, proper operation and appropriate load rating.

³When using the fork mounted lifting hook, always reference the appropriate machine manual for installation instructions, proper machine configuration, operation and appropriate load rating.

NOTES:

· Use only JLG approved attachments with proper material handler model/attachment load capacity charts displayed in the operator's cab.

· Never use your attachment as a work platform or personnel carrier.

Can't find the attachment you are looking for? Contact your JLG Aftermarket Parts representative at 1-877-JLG-LIFT or visit www.jlg.com.

LOAD CHARTS

Load Chart Booklets-Current Production Common Attachments

The new attachments have been designed to fit the new common boom, please consult these serial number breaks for proper load charts.

Approved Common Attachments		Brand		Load Chart Booklet	Serial Number Break
SUPPLEMENTAL Load Chart Booklet					
0930020	BUCKET, 96" GRAPPLE	JLG ALL-WHEEL STEER	G6-42A	100110401	0160037722 thru 0160040659
			G6-42A	1001130739	0160040678 AND after
			G9-43A	100110402	0160037671 thru 0160040674, excluding 0160040468 and 0160040672
			G9-43A	1001130708	0160040675 AND after, including 0160040468 and 0160040672
			G10-43A	100115257	0160037671 thru 0160040674, excluding 0160040468 and 0160040672
			G10-43A	1001130844	0160040675 AND after, including 0160040468 and 0160040672
1001104992 ⁴	CARRIAGE, 72" 180 DEG SWING, 8000# CAP		G10-55A	100110403	0160037690 thru 0160038486, including 0160038505 and 0160038507 excluding 0160038324, 0160038489 and 0160038493
73012955 ⁵	DUAL FORK, 50" POSITIONING		G10-55A	100115138	0160038500 AND after including 0160038324, 0160038489 and 0160038493, excluding 0160038505 and 0160038507
1001142247	PIPE GRAPPLE		G10-55A	100115138	0160038508 AND after (Pipe Grapple ONLY)
1001142790 ⁵	SIDE SHIFT, 50"		G12-55A	100110404	0160037689 thru 0160038533
1001108668	TOWER, 8' STD, 4500# CAP	G12-55A	100115540	0160038508 AND after (Pipe Grapple ONLY)	
		G15-44A	1001194373	All	
		JLG 1055	1001160610	All	
		JLG 1255	1001160609	All	
1001108669 ⁶	TOWER, 8' SIDE TILT ELEC, 4500# CAP	G6-42P	100110405	0160037689 AND after	
1001099351	TRUSS BOOM, 12' W/WINCH, 2000# CAP	GRADALL/ JLG REAR PIVOT STEER	534D9-45	100110406	0160038519 AND after
1001099902S	TRUSS BOOM, 12' W/O WINCH, 2000# CAP		534D10-45	100110407	0160038445 AND after
1001099901S	TRUSS BOOM, 15' W/O WINCH, 2000# CAP		544D10-55	100110408	0160037964 AND after
1001176515 ⁷	MATERIAL HANDLING ARM, 8', 12' & 15'	LULL	1044C-54	100110409	0160037900 AND after
			644E - 42	100110410	0160037794 AND after
			944E - 42	100110411	0160037794 AND after
		SKYTRAK	6036	100110412	0160037788 AND after
			6042	100110413	0160037788 AND after
			8042	100110414	0160037799 AND after
			10042	100110415	0160037798 AND after 0160037797 (Pipe Grapple ONLY)
			10054	100110416	0160037793 AND after 0160037792 AND after (Pipe Grapple ONLY)

SPECIAL NOTES:

⁴This attachment is not approved for the following models: G6-42A, G9-43A, G10-43A, G6-42P, 534D9-45, 1044C-54, 644E-42 and 944E-42.

⁵Not approved for use on Gradall/JLG Rear Pivot Steer

⁶This attachment is not approved for the following models: 644E-42, 944E-42, 6036, 6042, 8042, 10042 and 10054.

⁷This attachment is only approved for models: G10-55A/G12-55A and SKY TRAK 8042. G10-55A ONLY for SN breaks: 0160038500 AND after including 0160038324, 0160038489 and 0160038493, excluding 0160038505 and 0160038507 and G12-55A ONLY for SN breaks: 0160038538 AND after

NOTES:

- Use only JLG approved attachments with proper material handler model/attachment load capacity charts displayed in the operator's cab.
- Never use your attachment as a work platform or personnel carrier.
- Can't find the attachment you are looking for? Contact your JLG Aftermarket Parts representative at 1-877-JLG-LIFT or visit www.jlg.com.

Load Chart Booklets-Current Production Common Attachments

The new attachments have been designed to fit the new common boom, please consult these serial number breaks for proper load charts.

Approved Common Attachments		Brand	Machine Model	Load Chart Booklet	Serial Number Break
STANDARD ENGLISH Load Chart Booklet - to use with the Universal (Skid Steer) Quick Coupler					
1001112793	CARRIAGE, 50" STD, 5500# CAP	JLG	G5-18A	1001102030	Before 0160040809
1001104008	CARRIAGE, 48" SIDE TILT, 7000# CAP			1001126677	0160040809 AND after
1001104022	CARRIAGE, 48" SIDE SHIFT, 7000# CAP				
STANDARD METRIC Load Chart Booklet - to use with the Universal (Skid Steer) Quick Coupler					
1001112793	CARRIAGE, 50" STD, 5500# CAP	JLG	G5-18A	1001117338	Before 0160040809
1001104008	CARRIAGE, 48" SIDE TILT, 7000# CAP			1001126685	0160040809 AND after
1001104022	CARRIAGE, 48" SIDE SHIFT, 7000# CAP				

Load Chart Booklets-Current Production Common Attachments

The new attachments have been designed to fit the new common boom, please consult these serial number breaks for proper load charts.

Approved Common Attachments		Brand	Machine Model	Load Chart Booklet	Serial Number Break
STANDARD ENGLISH Load Chart Booklet - to use with the Standard (Hydraulic or Manual) Quick Coupler					
1001097283	CARRIAGE, 50" STD, 7000# CAP	JLG	G5-18A	1001102000	ALL
1001099613	CARRIAGE, 48" SIDE TILT, 7000# CAP				
1001099614	BUCKET, 72" 1.7 CU YD				
1001099615	BUCKET, 73" 1.0 CU YD				
1001099831	BUCKET, 72" GRAPPLE				
0240110	TRUSS BOOM, 11.86' W/O WINCH, 1433# CAP				
STANDARD METRIC Load Chart Booklet - to use with the Standard (Hydraulic or Manual) Quick Coupler					
1001097283	CARRIAGE, 50" STD, 7000# CAP	JLG	G5-18A	1001117326	ALL
1001099613	CARRIAGE, 48" SIDE TILT, 7000# CAP				
1001099614	BUCKET, 72" 1.7 CU YD				
1001099615	BUCKET, 73" 1.0 CU YD				
1001099831	BUCKET, 72" GRAPPLE				
0240110	TRUSS BOOM, 11.86' W/O WINCH, 1433# CAP				

SPECIAL NOTES:

When using the fork mounted attachments on approved JLG models, always make sure to have the appropriate carriage load chart and operator and safety manual on hand.

NOTES:

- Use only JLG approved attachments with proper material handler model/attachment load capacity charts displayed in the operator's cab.
 - Never use your attachment as a work platform or personnel carrier.
- Can't find the attachment you are looking for? Contact your JLG Aftermarket Parts representative at 1-877-JLG-LIFT or visit www.jlg.com.

LOAD CHARTS

Load Chart Booklets-Current Production Common Attachments

The new attachments have been designed to fit the new common boom, please consult these serial number breaks for proper load charts.

Approved Common Attachments		Brand	Machine Model	Load Chart Booklet	Serial Number Break	
ISO STANDARD Load Chart Booklet						
1170021S	CARRIAGE, 50" STD, 12000# CAP	JLG	G6-42A	100112810	0160040169 thru 0160040659	
1170024S	CARRIAGE, 60" STD, 12000# CAP		G6-42A	100113185	0160040678 AND after	
1001132514S	CARRIAGE, 72" STD, 12000# CAP		G9-43A	1001130825	0160040675 AND after, including 0160040468 and 0160040672	
1170054S	CARRIAGE, 50" SIDE TILT, 10000# CAP		G10-43A	1001132131	0160042701 AND after	
1001101956S	CARRIAGE, 60" SIDE TILT, 10000# CAP		G10-55A	1001115175	0160040120 AND after	
1170057S	CARRIAGE, 72" SIDE TILT, 10000# CAP		G12-55A	1001115190	0160040120 AND after	
1001095418S	CARRIAGE, 72" 90 DEG SWING, 10000# CAP		G10-55A	1001106003	0160037690 through 0160038486, including 0160038505 and 0160038507, excluding 0160038324, 0160038489 and 0160038493	
1001207606	COUPLER MOUNTED HOOK 15000# CAP		JLG 1055	1001208864	ALL	
			JLG 1255	1001208866		
1001195082	TRASH HOPPER		JLG 1055	1001211157	ALL	
1001100822	BUCKET, 72" 1.0 CU YD		JLG 1255	1001211155	ALL	
1001100823	BUCKET, 96" 1.5 CU YD		SKYTRAK	6036	1001127753	0160037788 AND after
1001100824	BUCKET, 102" 2.0 CU YD			6042	1001127593	0160037788 AND after
1001137512 ¹	FORK EXTENSIONS 90"			8042	1001122561	0160029593 AND after
1001100967	TRUSS BOOM, 3' W/ WINCH, 4000# CAP	10042		1001122612	0160029593 AND after	
1001099901S	TRUSS BOOM, 15' W/O WINCH, 2000# CAP	10054		1001121967	0160029593 AND after	
1001103730S ²	PLATFORM, FORK MOUNTED 4X8 ISO, 1000# CAP					
1001103736S ²	PLATFORM, FORK MOUNTED 4X8 FRENCH, 1000# CAP					
1001103637S ²	PLATFORM, FORK MOUNTED 4X8 ANSI, 1000# CAP					
91565094 ³	HOOK, LIFTING 12000# CAP					

SPECIAL NOTES:

When using the fork mounted attachments on approved JLG models, always make sure to have the appropriate carriage load chart and operator and safety manual on hand.

¹Designed specifically to be used with and requires JLG fork part # 1001092391 or JLG for part # 2340039

²When using the fork mounted work platform, always reference the appropriate machine manual in conjunction with the operator and safety manual (pn-31200160) for installation instructions, proper machine configuration, proper operation and appropriate load rating.

³When using the fork mounted lifting hook, always reference the appropriate machine manual for installation instructions, proper machine configuration, operation and appropriate load rating.

NOTES:

- Use only JLG approved attachments with proper material handler model/attachment load capacity charts displayed in the operator's cab.
 - Never use your attachment as a work platform or personnel carrier.
- Can't find the attachment you are looking for? Contact your JLG Aftermarket Parts representative at 1-877-JLG-LIFT or visit www.jlg.com.

Load Chart Booklets-Current Production Common Attachments

The new attachments have been designed to fit the new common boom, please consult these serial number breaks for proper load charts.

Approved Common Attachments		Brand	Machine Model	Load Chart Booklet	Serial Number Break
ISO SUPPLEMENTAL Load Chart Booklet					
		JLG ALL-WHEEL STEER	G6-42A	100112810	0160040169 thru 0160040659
			G6-42A	1001131185	0160040678 AND after
0930020	BUCKET, 96" GRAPPLE		G9-43A	1001130818	0160040675 AND after, including 0160040468 and 0160040672
1001104992 ⁴	CARRIAGE, 72" 180 DEG SWING, 8000# CAP		G10-43A	1001130852	0160040675 AND after, including 0160040468 and 0160040672
73012955	DUAL FORK, 50" POSITIONING		G10-55A	100115183	0160045636 AND after, including 0160045082, 0160045094, 0160045209, 0160045295, 0160045296 and 0160045449
			G12-55A	100115198	0160045636 AND after, including 0160045082, 0160045094, 0160045209, 0160045295, 0160045296 and 0160045449
1001142247	PIPE GRAPPLE		JLG 1055	1001160618	ALL
			JLG 1255	1001160617	
1001108669 ⁵	TOWER, 8' SIDE TILT ELEC, 4500# CAP		G10-55A	100115175	0160038508 AND after (Pipe Grapple ONLY)
1001108668	TOWER, 8' STD, 4500# CAP		G12-55A	100115198	0160038508 AND after (Pipe Grapple ONLY)
1001099351	TRUSS BOOM, 12' W/WINCH, 2000# CAP	SKYTRAK	6036	1001127755	0160037788 AND after
1001099902S	TRUSS BOOM, 12' W/O WINCH, 2000# CAP		6042	1001127594	0160037788 AND after
			8042	1001122562	0160029593 AND after
1001099901S	TRUSS BOOM, 15' W/O WINCH, 2000# CAP		10042	1001122613	0160029593 AND after
			10054	1001121968	0160029593 AND after

SPECIAL NOTES:

⁴This attachment is not approved for the following models: G6-42A, G9-43A, G10-43A, G6-42P, 534D9-45, 1044C-54, 644E-42 and 944E-42.

⁵This attachment is not approved for the following models: 644E-42, 944E-42, 6036, 6042, 8042, 10042 and 10054.

NOTES:

- Use only JLG approved attachments with proper material handler model/attachment load capacity charts displayed in the operator's cab.
 - Never use your attachment as a work platform or personnel carrier.
- Can't find the attachment you are looking for? Contact your JLG Aftermarket Parts representative at 1-877-JLG-LIFT or visit www.jlg.com.

To order go to Discount-Equipment.com



www.Discount-Equipment.com

Part No. 401013
R0216
Printed in USA

