

OPERATION AND PARTS MANUAL



MODEL J36E2 WALK-BEHIND TROWEL (2 HP ELECTRIC MOTOR)

S/N LE0118039 AND BELOW

Revision #2 (01/31/18)



THIS MANUAL MUST ACCOMPANY THE EQUIPMENT AT ALL TIMES.

PN: 23814

PARTS FINDER

**Search Website
by Part Number**



**Search Manual
Library For Parts
Manual & Lookup Part
Numbers – Purchase
or Request Quote**

Search Manuals

Enter your information to help us find the right parts manual for your machine.

* Brand:

* Model:

* Serial:

* Part Number:

SEARCH

**Can't Find Part or
Manual? Request Help
by Manufacturer,
Model & Description**

Parts Order Form

Please fill in the following information to help us find the right part for your machine.

Manufacturer:	<input type="text"/>
Model:	<input type="text"/>
Description:	<input type="text"/>
Part Number:	<input type="text"/>
Quantity:	<input type="text"/>
Notes:	<input type="text"/>

Submit

Discount-Equipment.com is your online resource for quality parts & equipment.

Florida: **561-964-4949** Outside Florida TOLL FREE: **877-690-3101**

Need parts?

Click on this link: <http://www.discount-equipment.com/category/5443-parts/> and choose one of the options to help get the right parts and equipment you are looking for. Please have the machine model and serial number available in order to help us get you the correct parts. If you don't find the part on the website or on one of the online manuals, please fill out the request form and one of our experienced staff members will get back to you with a quote for the right part that your machine needs.

We sell worldwide for the brands: Genie, Terex, JLG, MultiQuip, Mikasa, Essick, Whiteman, Mayco, Toro Stone, Diamond Products, Generac Magnum, Airman, Haulotte, Barreto, Power Blanket, Nifty Lift, Atlas Copco, Chicago Pneumatic, Allmand, Miller Curber, Skyjack, Lull, Skytrak, Tsurumi, Husquvarna Target, Stow, Wacker, Sakai, Mi-T-M, Sullair, Basic, Dynapac, MBW, Weber, Bartell, Bennar Newman, Haulotte, Ditch Runner, Menegotti, Morrison, Contec, Buddy, Crown, Edco, Wyco, Bomag, Laymor, EZ Trench, Bil-Jax, F.S. Curtis, Gehl Pavers, Heli, Honda, ICS/PowerGrit, IHI, Partner, Imer, Clipper, MMD, Koshin, Rice, CH&E, General Equipment, Amida, Coleman, NAC, Gradall, Square Shooter, Kent, Stanley, Tamco, Toku, Hatz, Kohler, Robin, Wisconsin, Northrock, Oztec, Toker TK, Rol-Air, APT, Wylie, Ingersoll Rand / Doosan, Innovatech, Con X, Ammann, Mecalac, Makinex, Smith Surface Prep, Small Line, Wanco, Yanmar

NOTICE

Support is no longer available for J36E2 operation at 115 volts. If your J36E2 trowel is configured for 115-volt operation (S/N LE0118039 and below), it will need to be rewired for 230-volt operation. Please see the attached Safety Warning and Service Bulletin for details.

NOTICE

For current operation and/or parts information for the J36E2 Walk-Behind Trowel go to Discount-Equipment.com and refer to the operation and parts manuals for the J36E2 (S/N LE0118040 and above).

Go to Discount-Equipment.com to order your parts

SAFETY WARNING

Date: 10/16/19
To: Electric Walk-Behind Trowel Owners
From: Multiquip Product Department
Subject: Only Operating J36E2/J42E on 230 VAC



Dear Multiquip Customer,

Our records indicate you purchased an MQ Whiteman power trowel equipped with a 2.0 hp electric motor rated for 115-volt or 230-volt operation. This type of trowel is identified by the following model numbers: J42E and J36E2.

These trowels were originally manufactured to operate at 115 volts with the optional capacity to operate at 230 volts.

One of the safety features of the trowel is the Operator Presence ON/OFF Lever Switch. When the lever is released, power to the electric motor will be interrupted.

We have learned that the electric switch that enables power interruption is underrated for the electrical current required for safe operation at 115 volts. In rare circumstances, electrical contacts in the switch may fail, preventing the Operator Presence ON/OFF Lever Switch from operating as intended. Failure of the switch could result in a runaway trowel and SERIOUS INJURY and/or property damage.

Multiquip is unaware of any reports of electric switch failure resulting in the failure of the Operator Presence ON/OFF Lever Switch. However, we believe it is necessary to bring this to your attention as a safety precaution.

If you own any of these models listed above, use the trowel only in its 230-volt configuration and for 230-volt operation only. **DO NOT CONTINUE OPERATING THE TROWEL USING 115-VOLT POWER.** Conversion (rewiring) to 230-volt operation should be done only by a qualified technician or a Multiquip service center.

Is a replacement micro-switch available that permits operation using 115-volt power?

No. At this time a replacement switch is not available.

What if I have sold the trowel?

Please forward this Notice or a color copy of this Notice to, or provide us with contact information for, the new owner or retail purchaser.

How do I rewire the motor to 230 volts?

The conversion should only be done by a qualified technician or equipment service center.

Is this campaign covered under warranty?

Yes. If the original product warranty period has expired, Multiquip will extend the new product limited warranty to cover conversion costs in accordance with this campaign.



Service Bulletin

Electric Walk-Behind Trowel 230V Wiring Update

Product Group: Trowels	Date Issued: 10/16/19	Expiration Date: N/A	Service Bulletin No. TR20190823
Bulletin Type <input checked="" type="checkbox"/> Mandatory <input type="checkbox"/> Information Only <input type="checkbox"/> Recommended Change		Models/Series Affected: J36E2 S/N LE0118039 AND BELOW J42E S/N ZD0158011 AND BELOW	

Details

Problem:

We have learned that the electric switch that enables power interruption is underrated for the electrical current required for safe operation at 115 volts. In rare circumstances, electrical contacts in the switch may fail, preventing the Operator Presence ON/OFF Lever Switch from operating as intended. Failure of the switch could result in a runaway trowel and SERIOUS INJURY and/or property damage.

Solution:

If you own any of these models listed above, use the trowel only in its 230-volt configuration and for 230-volt operation only. **DO NOT CONTINUE OPERATING THE TROWEL USING 115-VOLT POWER.** Conversion (rewiring) to 230-volt operation should be done only by a qualified technician or a MultiQuip service center.

Parts Information

Item	Part No.	Description	Qty.	Remarks
1	30721	Kit, 230V Wiring, Electric WBT	1	Includes items 2-6
2	19688	Insulator, Splice Cap	2	
3	19687	Crimp, Sleeve	2	
4	34938	Wire Nut, Pre-Insulated Crimp 16-12 AWG	2	
5	30718	Assembly, Pig Tail, 230V	1	
6	30096	Terminal, Ring, 12-10 AWG, #8	3	

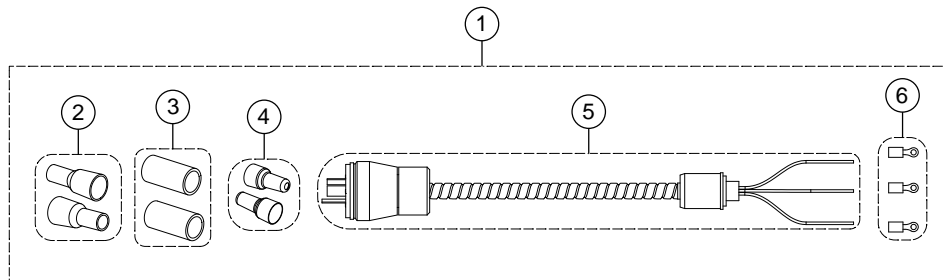


Figure 1. Electric Walk-Behind Trowel 230V Wiring Kit Components

WORK SAFELY!

Only a qualified service technician with proper training should perform this procedure. Follow all shop safety rules while performing this procedure.

REQUIRED TOOLS

- Flat-head screwdriver
- Phillips-head screwdriver
- Wire strippers/crimpers/cutters

PREPARATION

Place the trowel on secure, level ground in an area free of dirt and debris. Make sure the motor is turned **OFF**.

EXISTING PLUG REMOVAL

1. Remove the two screws securing the switch box cover to the front of the main switch box (Figure 2). Keep the screws for later.

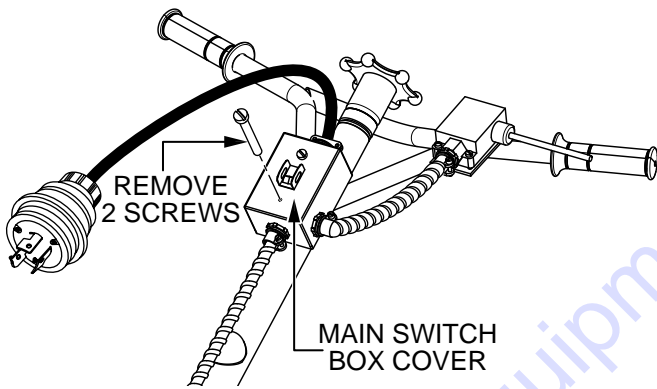


Figure 2. Remove Main Switch Box Cover

2. Open the main switch box and disconnect the three power cable wires (Figure 3).

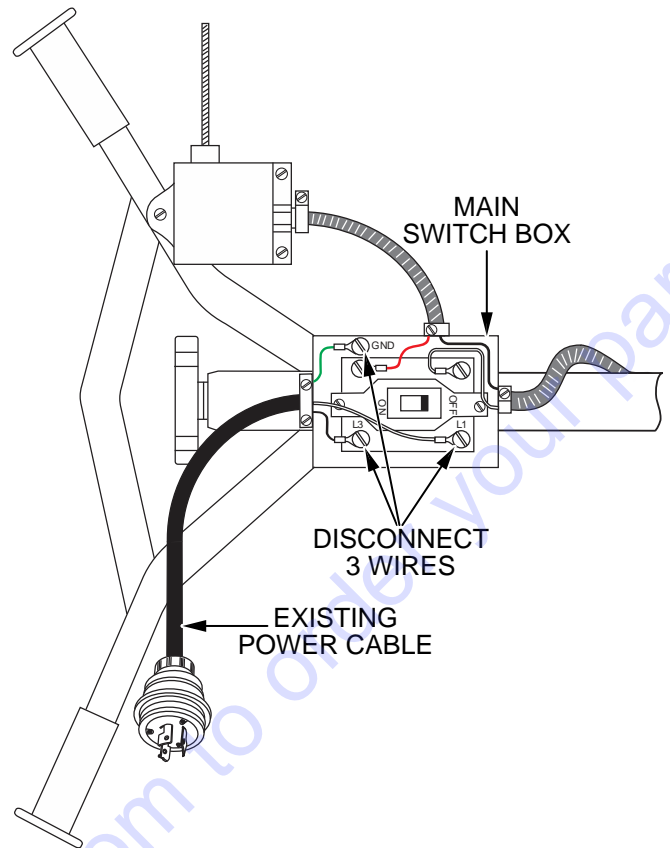


Figure 3. Disconnect Power Cable Wires

3. Remove the two small screws (Figure 4) securing the existing power cable fitting to the main switch box.

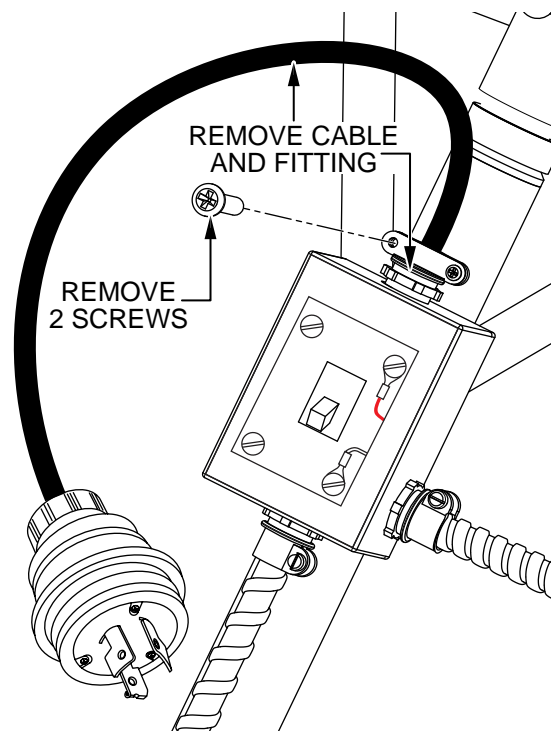


Figure 4. Remove Existing Power Cable Assembly

- Remove and discard the existing power cable and fitting (Figure 4).

NEW PLUG INSTALLATION

- Locate the 230V pigtail assembly (P/N 30718). Strip the insulation back 1/4" from the end of each of the three pigtail assembly wires (Figure 5).

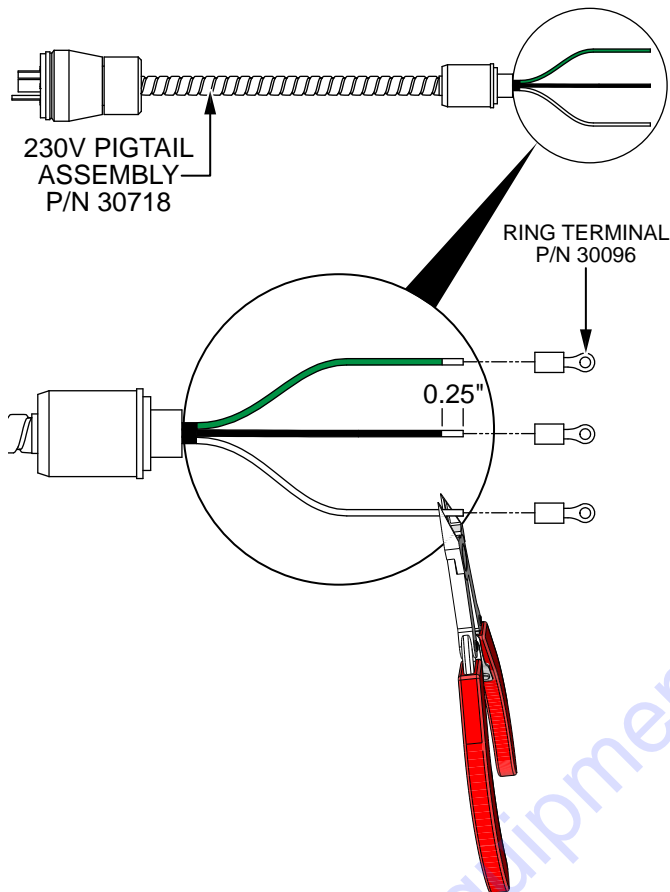


Figure 5. Install Ring Terminals

- Place a ring terminal (P/N 30096) onto the end of each of the three pigtail assembly wires and crimp. See Figure 5.

- Connect the three pigtail assembly wires inside the main switch box as shown in Figure 6.

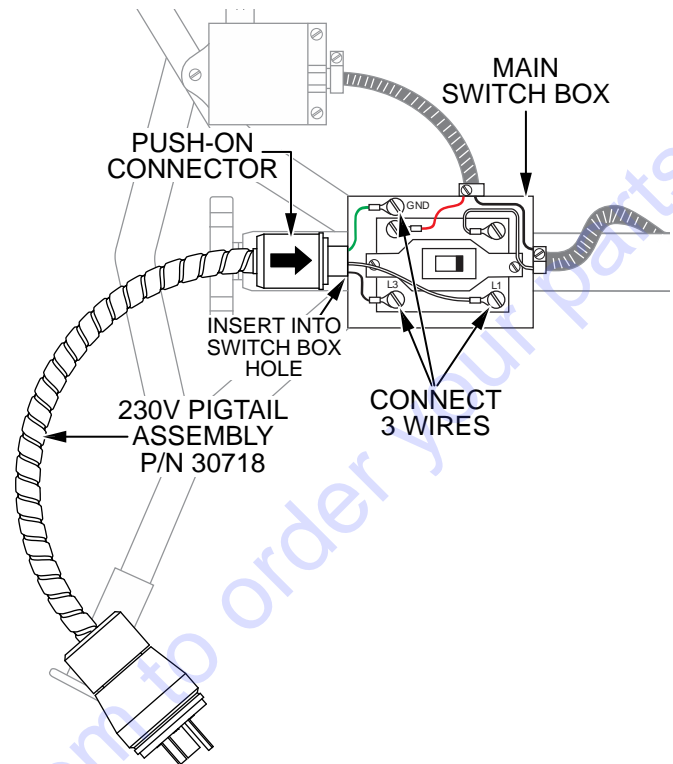


Figure 6. Install New Power Cable

- Finish installing the 230V pigtail assembly (P/N 30718) by inserting the push-on liquid-tight connector into the open hole on the main switch box. Make sure the connector is fully seated in the hole. See Figure 6.
- Reinstall the switch cover using the two screws that were removed earlier.

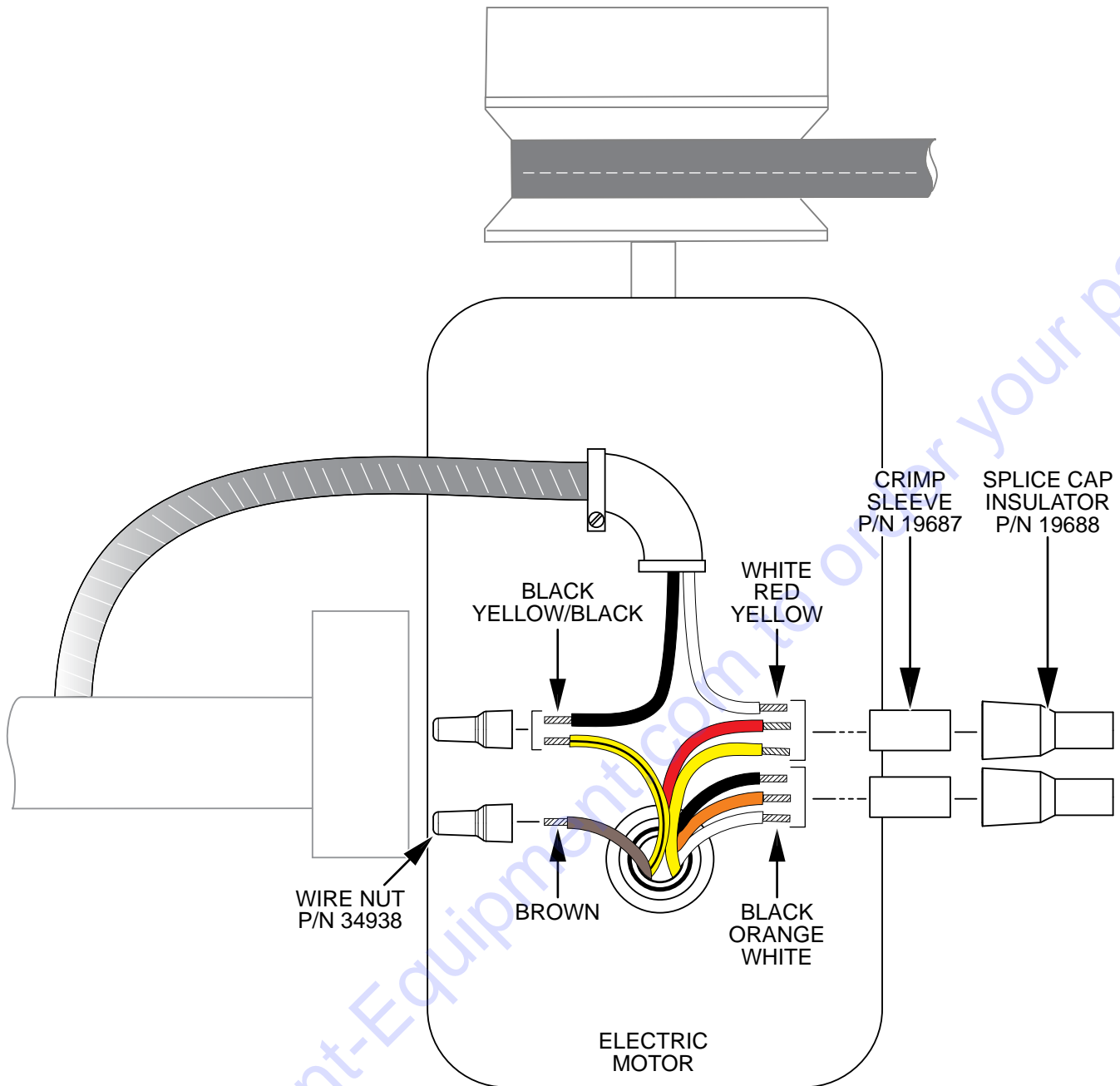


Figure 7. Motor Wiring

MOTOR WIRING

1. Connect the black, orange, and white motor wires as shown in Figure 7 using a crimp sleeve (P/N 19687) and splice cap insulator (P/N 19688).
2. Connect the red and yellow wires from the motor with the white wire from the handle using a crimp sleeve (P/N 19687) and splice cap insulator (P/N 19688). See Figure 7.
3. Connect the yellow/black wire from the motor with the black wire from the handle using a pre-insulated crimp 16-12 AWG wire nut (P/N 34938). See Figure 7.
4. Use the remaining pre-insulated crimp 16-12 AWG wire nut (P/N 34938) to cap off the brown wire from the motor. See Figure 7.

MATING CONNECTOR SELECTION

To connect the plug to a 240VAC receptacle, use an extension cord with a NEMA L6-20R twist-lock mating connector and a 12/3 wire gauge.

PARTS FINDER

**Search Website
by Part Number**



**Search Manual
Library For Parts
Manual & Lookup Part
Numbers – Purchase
or Request Quote**

Search Manuals

Enter your information to help us find the right parts manual for your machine.

* Brand:

* Model:

* Serial:

* Part Number:

SEARCH

**Can't Find Part or
Manual? Request Help
by Manufacturer,
Model & Description**

Parts Order Form

Please fill in the following information to help us find the right part for your machine.

Manufacturer:	<input type="text"/>
Model:	<input type="text"/>
Description:	<input type="text"/>
Part Number:	<input type="text"/>
Quantity:	<input type="text"/>
Notes:	<input type="text"/>

Submit

Discount-Equipment.com is your online resource for quality parts & equipment.

Florida: **561-964-4949** Outside Florida TOLL FREE: **877-690-3101**

Need parts?

Click on this link: <http://www.discount-equipment.com/category/5443-parts/> and choose one of the options to help get the right parts and equipment you are looking for. Please have the machine model and serial number available in order to help us get you the correct parts. If you don't find the part on the website or on one of the online manuals, please fill out the request form and one of our experienced staff members will get back to you with a quote for the right part that your machine needs.

We sell worldwide for the brands: Genie, Terex, JLG, MultiQuip, Mikasa, Essick, Whiteman, Mayco, Toro Stone, Diamond Products, Generac Magnum, Airman, Haulotte, Barreto, Power Blanket, Nifty Lift, Atlas Copco, Chicago Pneumatic, Allmand, Miller Curber, Skyjack, Lull, Skytrak, Tsurumi, Husquvarna Target, Stow, Wacker, Sakai, Mi-T-M, Sullair, Basic, Dynapac, MBW, Weber, Bartell, Bennar Newman, Haulotte, Ditch Runner, Menegotti, Morrison, Contec, Buddy, Crown, Edco, Wyco, Bomag, Laymor, EZ Trench, Bil-Jax, F.S. Curtis, Gehl Pavers, Heli, Honda, ICS/PowerGrit, IHI, Partner, Imer, Clipper, MMD, Koshin, Rice, CH&E, General Equipment, Amida, Coleman, NAC, Gradall, Square Shooter, Kent, Stanley, Tamco, Toku, Hatz, Kohler, Robin, Wisconsin, Northrock, Oztec, Toker TK, Rol-Air, APT, Wylie, Ingersoll Rand / Doosan, Innovatech, Con X, Ammann, Mecalac, Makinex, Smith Surface Prep, Small Line, Wanco, Yanmar